

V&V Reference Report

L2 ASCDS Version : 7.6.8

Observation 3946 - L2 Version 001
Chandra X-Ray Center

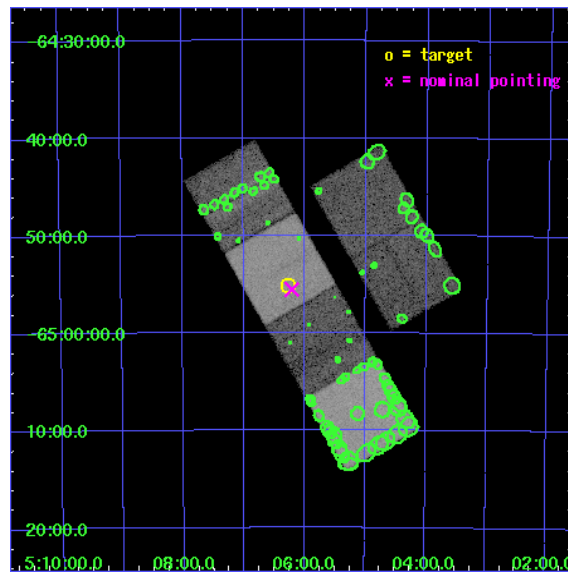
L2 Processing Date : Jul 30 2006

Contents

1	Front	2
2	OBI	3
2.1	OBI	3
2.1.1	Images	3
2.1.2	Bias	3
2.1.3	Parameters	4
2.1.4	Events	4
2.2	Compared Parameters	5
2.3	Aspect	6
2.4	Star Slots	9
2.4.1	Slot 3	9
2.4.2	Slot 4	10
2.4.3	Slot 5	11
2.4.4	Slot 6	12
2.4.5	Slot 7	13
2.5	FID Slots	14
2.5.1	Slot 0	14
2.5.2	Slot 1	15
2.5.3	Slot 2	16
3	Point Sources	17
A	Summary	18
A.1	Status	18
A.2	Comments	18

1 Front

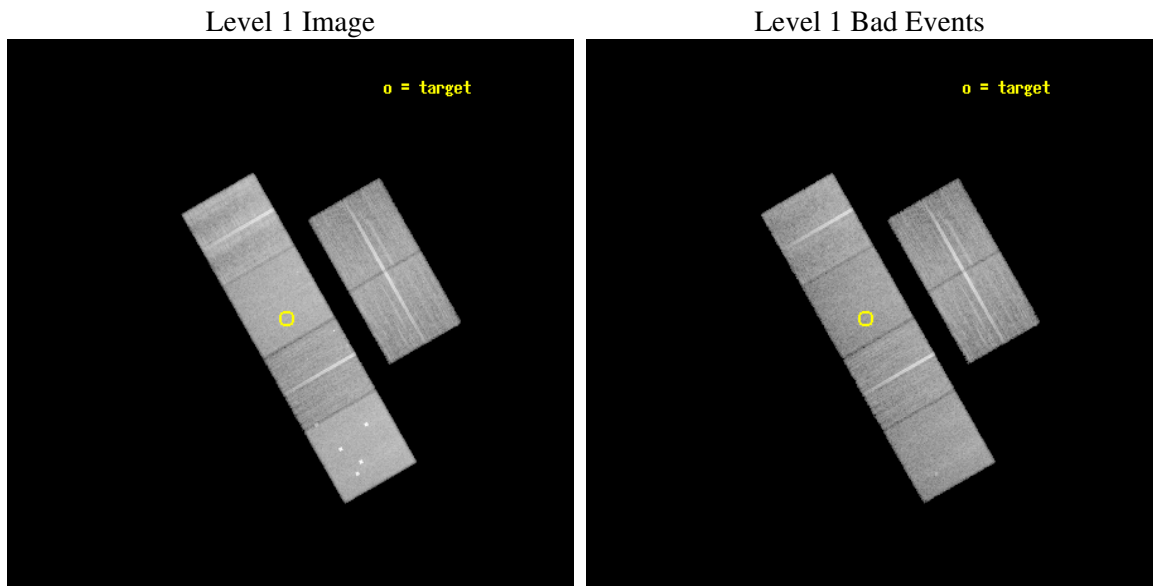
seq_num	600320
obs_id	3946
title	CHANDRA OBSERVATIONS OF RICH LMC STAR CLUSTERS
observer	Dr. Andrea Prestwich
object	NGC 1831
dtcycle	0
cycle	P
ra_targ	76.566667
dec_targ	-64.918333
ra_nom	76.552075692436
dec_nom	-64.925755413011
roll_nom	240.19447899877
revision	2
ontime	25247.999905944
livetime	24928.294528614
ontime2	25247.999905944
ontime3	25247.999905944
ontime5	25247.999905944
ontime6	25247.999905944
ontime7	25247.999905944
ontime8	25247.999905944
l2events	256243



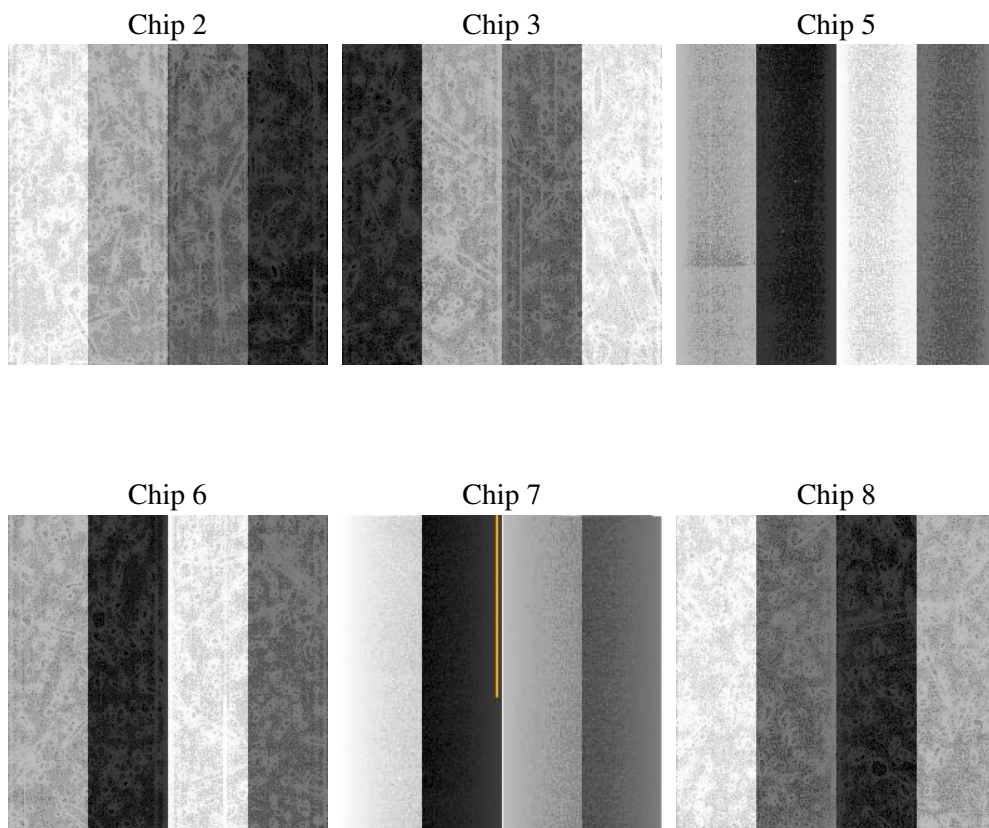
2 OBI

2.1 OBI

2.1.1 Images



2.1.2 Bias



2.1.3 Parameters

obi_num	0
ascdsver	7.6.8
caldsver	3.2.2
date	2006-07-30T09:16:09
revision	2

sched_exp_time	25350.000000
ontime	25253.878106236
ontime2	25253.878106236
ontime3	25253.878106236
ontime5	25253.878106236
ontime6	25253.878106236
ontime7	25253.878106236
ontime8	25253.878106236
l1events	1184390

2.1.4 Events

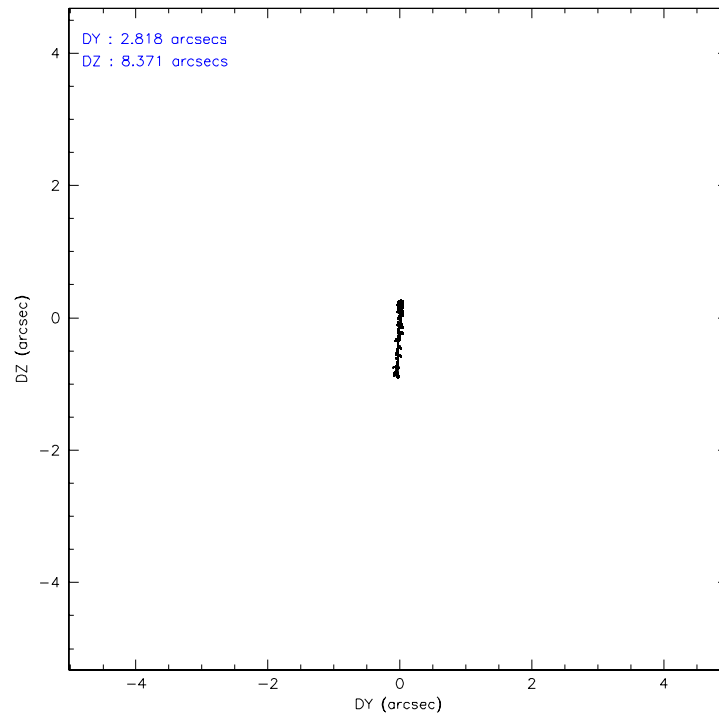
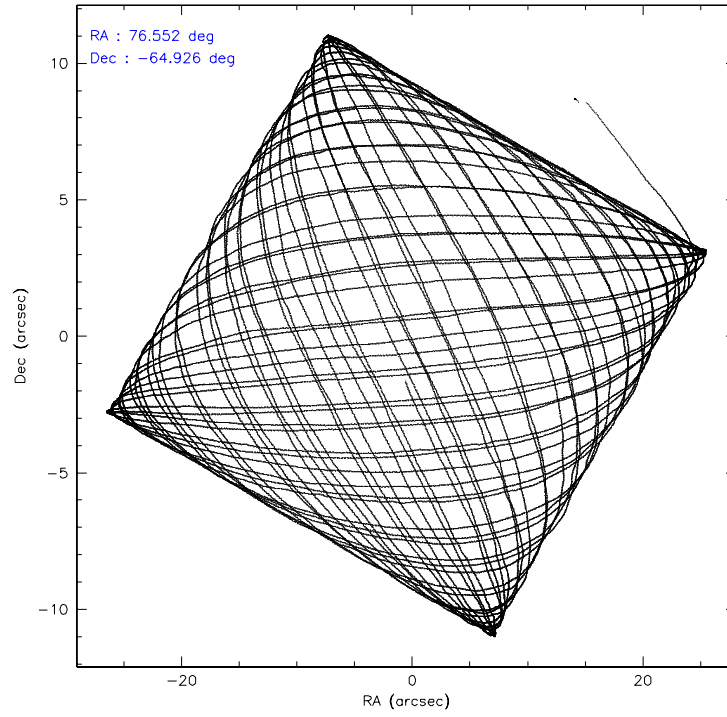
	ccd 2	ccd 3	ccd 5	ccd 6	ccd 7	ccd 8
level 1 events	169059	159127	242960	168938	216340	227966
rejected events	148476	139655	134275	147735	133659	164431
rejected %	87%	87%	55%	87%	61%	72%

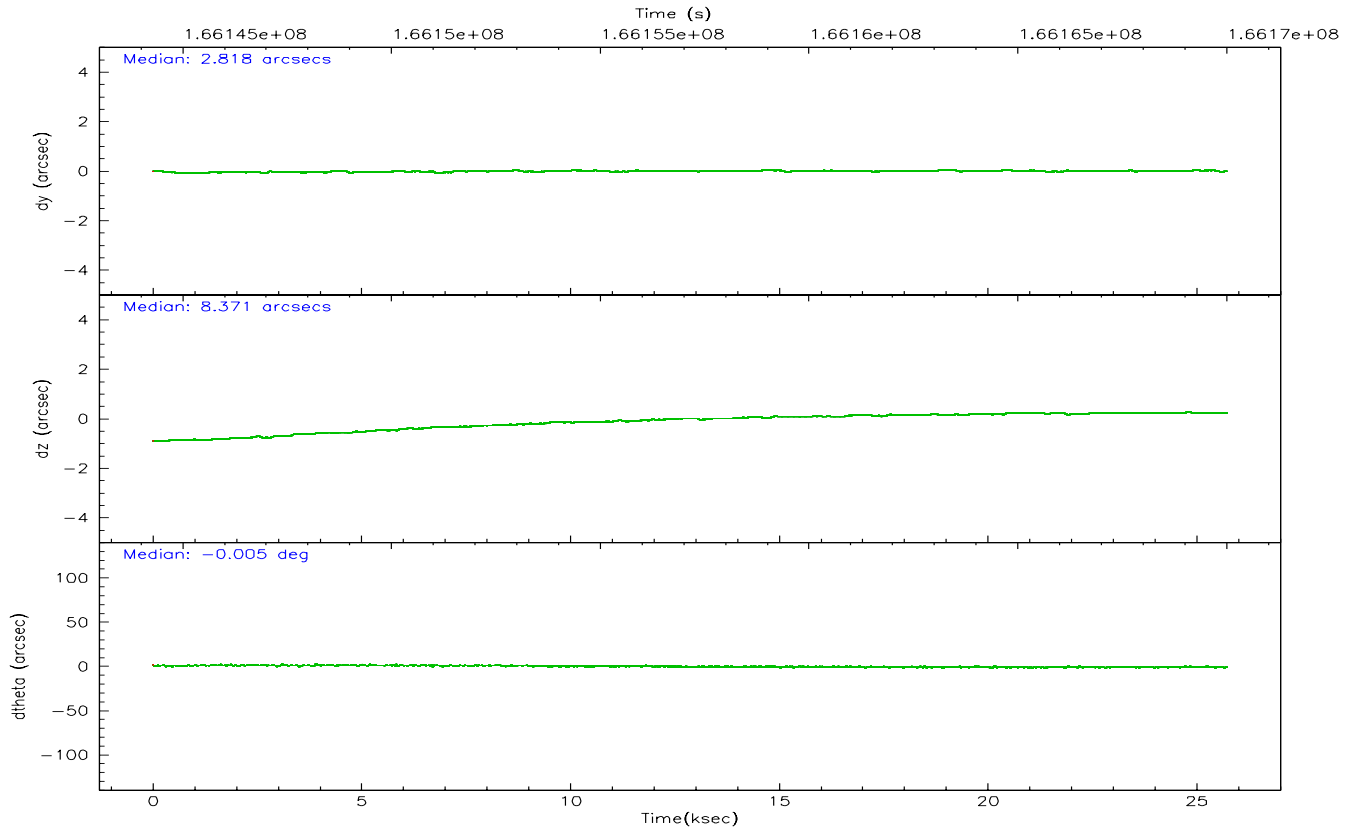
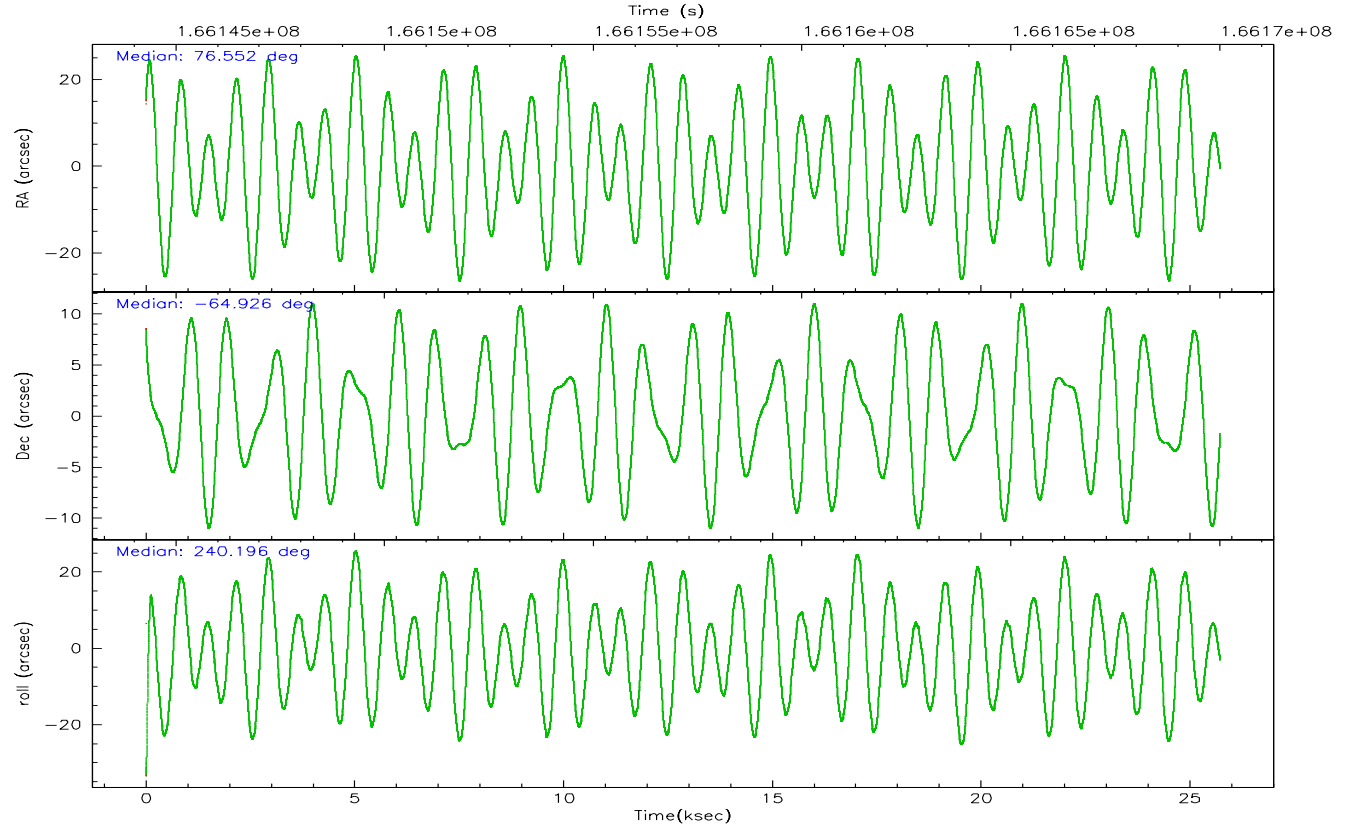
	ccd 2	ccd 3	ccd 5	ccd 6	ccd 7	ccd 8
grade 0 events	9193	8457	12019	8776	4893	20500
	5%	5%	4%	5%	2%	8%
grade 1 events	117	85	192	82	128	204
	0%	0%	0%	0%	0%	0%
grade 2 events	4189	3791	32106	4510	20486	11614
	2%	2%	13%	2%	9%	5%
grade 3 events	1835	1859	2632	1984	4356	8501
	1%	1%	1%	1%	2%	3%
grade 4 events	1922	1863	2305	1916	4085	8077
	1%	1%	0%	1%	1%	3%
grade 5 events	6202	6656	11324	7233	14243	9592
	3%	4%	4%	4%	6%	4%
grade 6 events	3447	3504	59652	4023	48876	14851
	2%	2%	24%	2%	22%	6%
grade 7 events	142154	132912	122730	140414	119273	154627
	84%	83%	50%	83%	55%	67%

2.2 Compared Parameters

Parameter	Planned	Actual	Parameter	Planned	Actual
Instrument	ACIS	ACIS	Obspar format version number	6	6
Detector	ACIS-235678	ACIS-235678	Obspar file type	PREDICTED	ACTUAL
Grating	NONE	NONE	Obspar update status	NONE	UPDATED
Data mode	FAINT	FAINT	On-chip summing requested	N	N
Observation mode	POINTING	POINTING	Subarray requested	NONE	NONE
Pointing RA	76.550949	76.55207569243564	Alternating exposures requested	N	N
Pointing Dec	-64.898534	-64.92575541301063	Primary exposure time	0.000000	3.2
Pointing Roll	240.036849	240.1944789987662			
SIM focus pos (mm)	-0.684267	-0.6828225247311905			
SIM defocus (mm)	0	0.001444936568705701			
SIM translation stage pos (mm)	-190.132523	-190.1400660498719			
SIM translation stage offset (mm)	0	0.00754346686406393			
Observation start time	166144667.184000	166143608.13171			
Observation start date	2003-04-07T23:16:43	2003-04-07T23:00:08			
Observation end time	166170017.184000	166170846.99536			
Observation end date	2003-04-08T06:19:13	2003-04-08T06:34:06			
Read mode	TIMED	TIMED			

2.3 Aspect



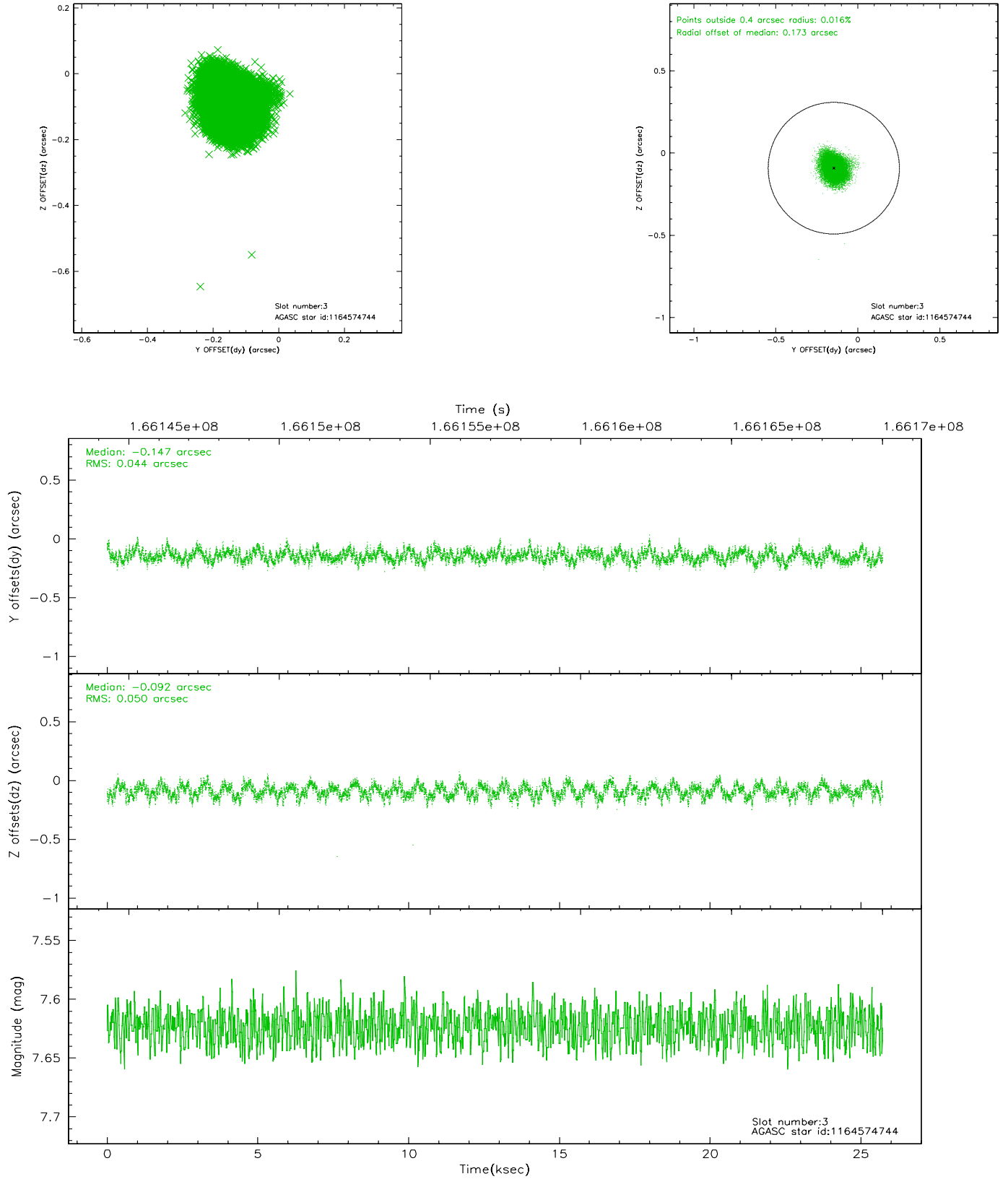


Slot Statistics

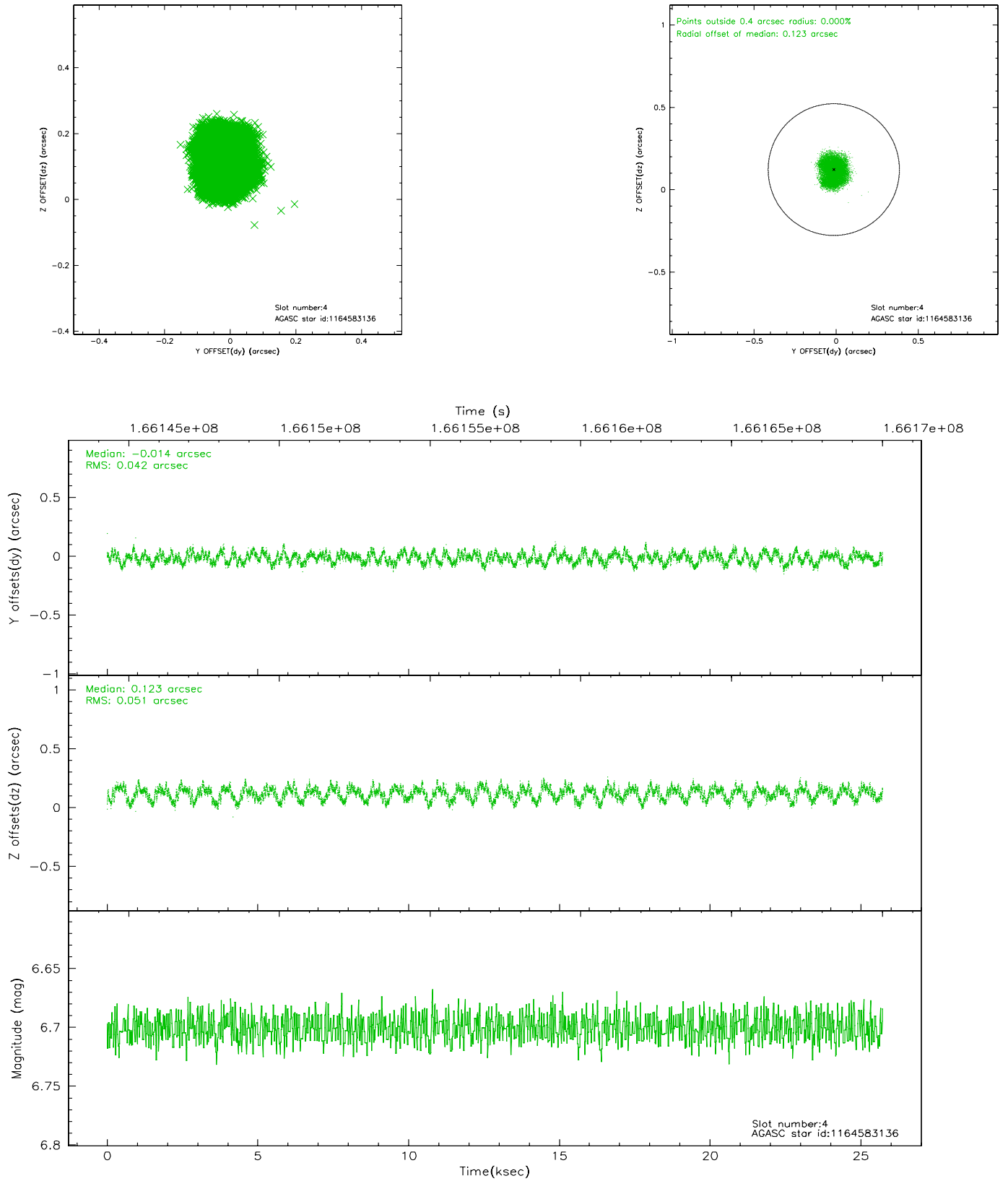
slot	status	id	mag	n_pts	med_dy	med_dz	dr1	dr2	ra	dec	mean_y	mean_z
0	FID	ACIS-S-1	7.19	6276	0.020	0.023	0.017	0.037	0.000000	0.000000	940.59	-1725.06
1	FID	ACIS-S-5	7.24	6276	-0.004	0.039	0.007	0.011	0.000000	0.000000	-1808.35	172.43
2	FID	ACIS-S-6	7.36	6275	-0.037	-0.049	0.013	0.035	0.000000	0.000000	405.99	816.41
3	GUIDE	1164574744	7.62	12552	-0.147	-0.092	0.073	0.112	76.661951	-65.376194	1406.72	1003.17
4	GUIDE	1164583136	6.70	12552	-0.014	0.123	0.073	0.108	75.985782	-65.012124	787.00	-538.11
5	GUIDE	1164707656	8.64	12551	0.144	0.046	0.079	0.128	77.518451	-65.044112	-269.81	1540.60
6	GUIDE	1164706480	8.63	12550	0.080	-0.025	0.072	0.110	77.431137	-64.386256	-2273.44	270.71
7	GUIDE	1164715680	9.41	12543	-0.061	-0.041	0.106	0.166	77.504019	-65.546102	1319.58	2400.26

2.4 Star Slots

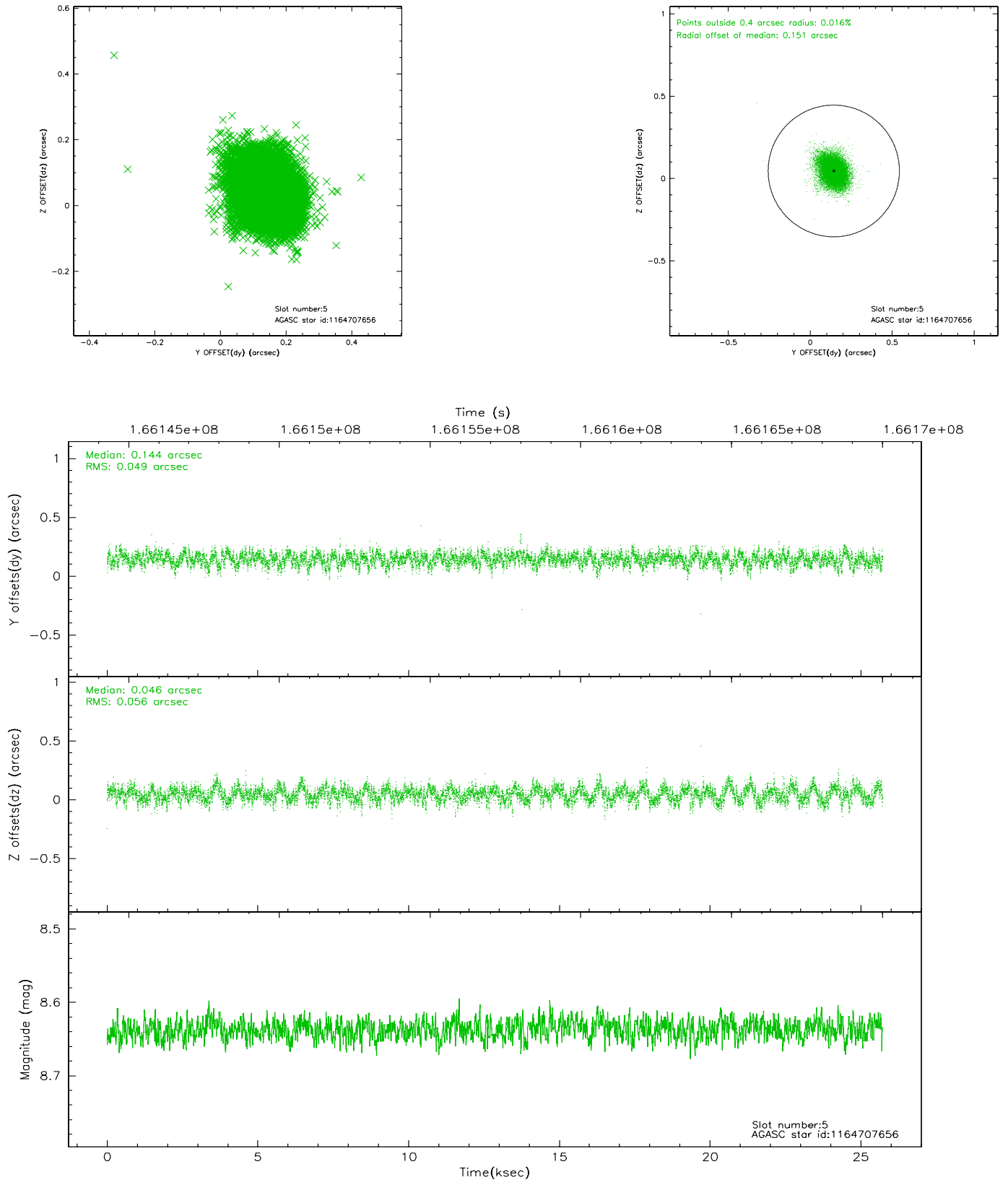
2.4.1 Slot 3



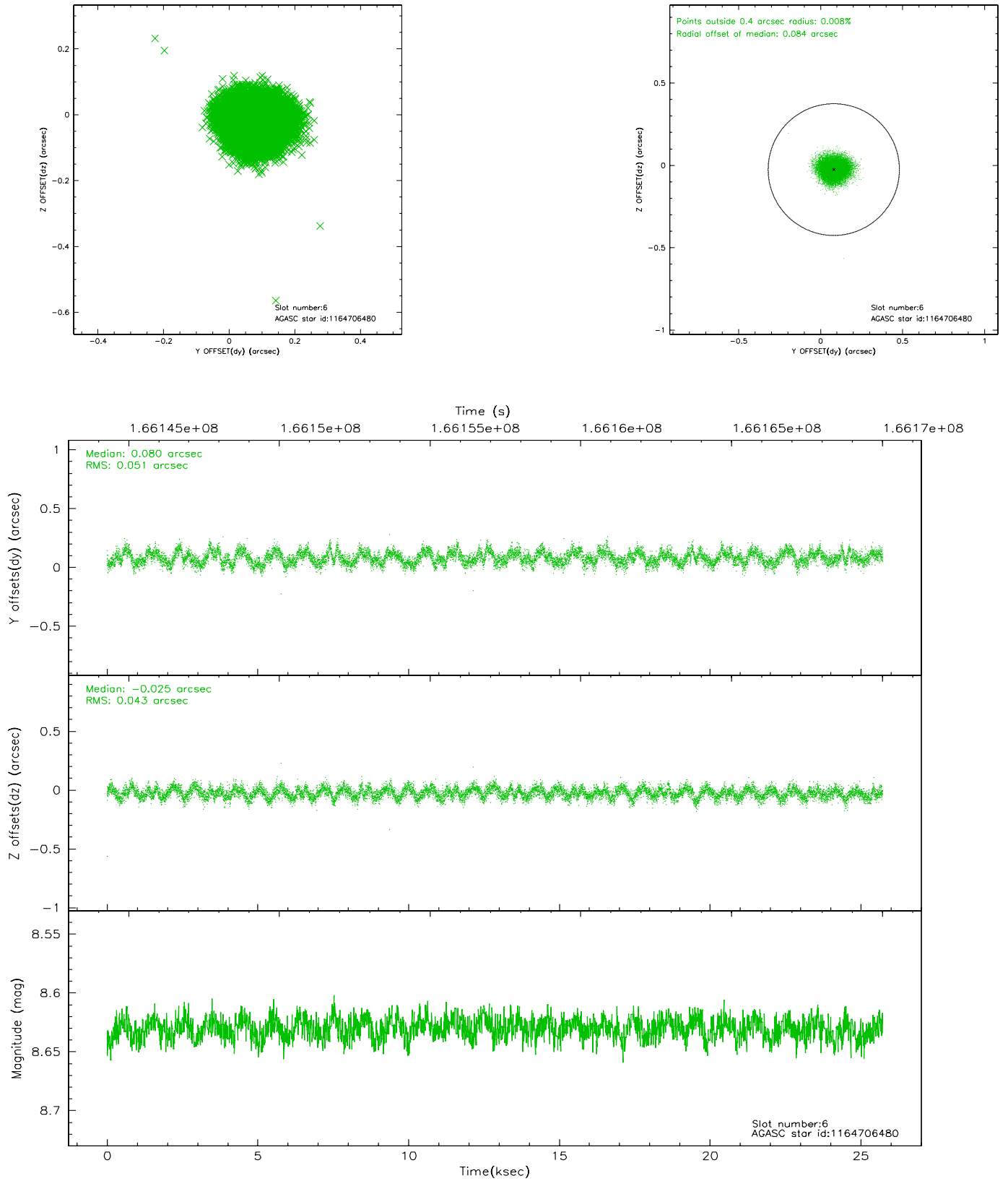
2.4.2 Slot 4



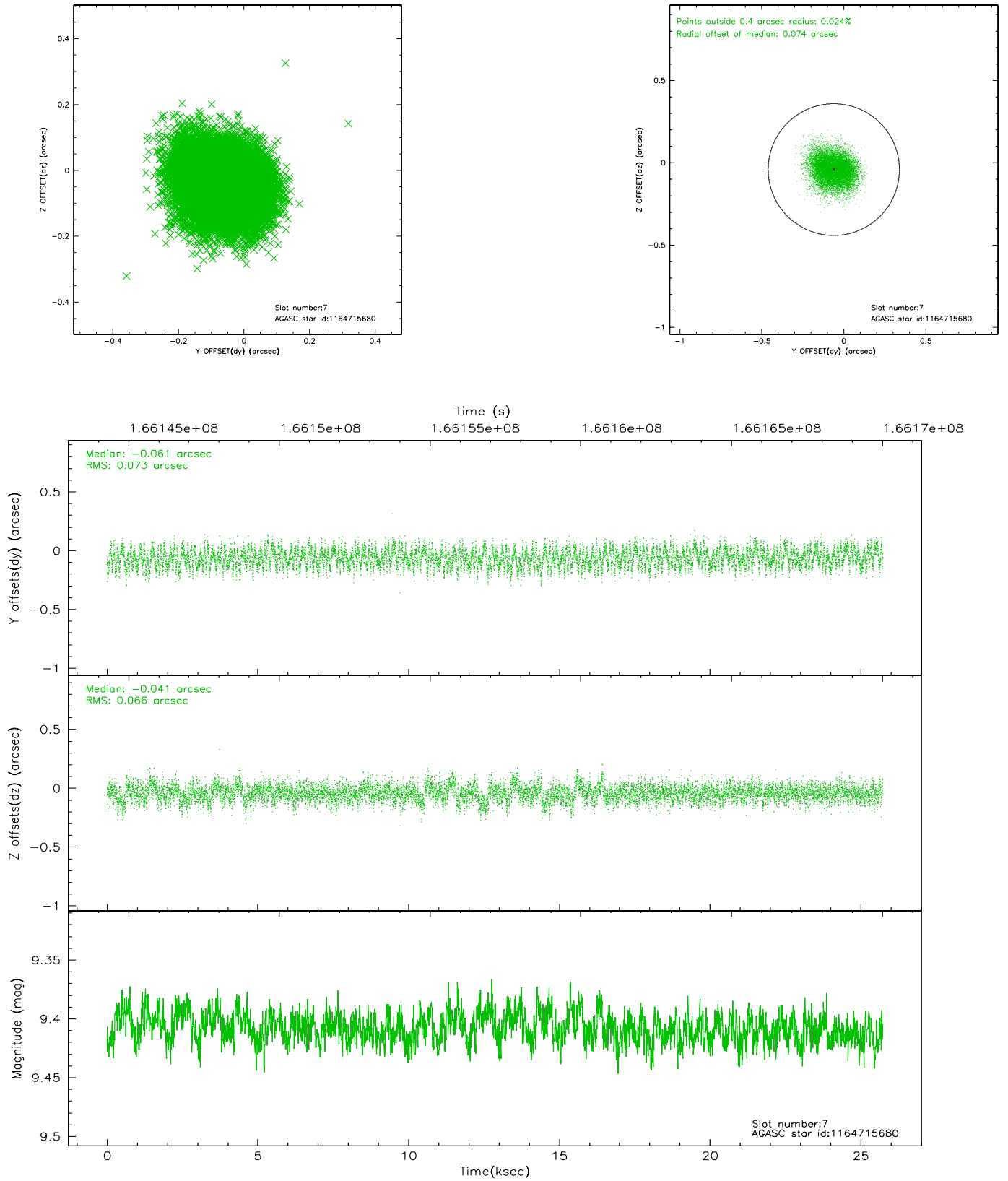
2.4.3 Slot 5



2.4.4 Slot 6

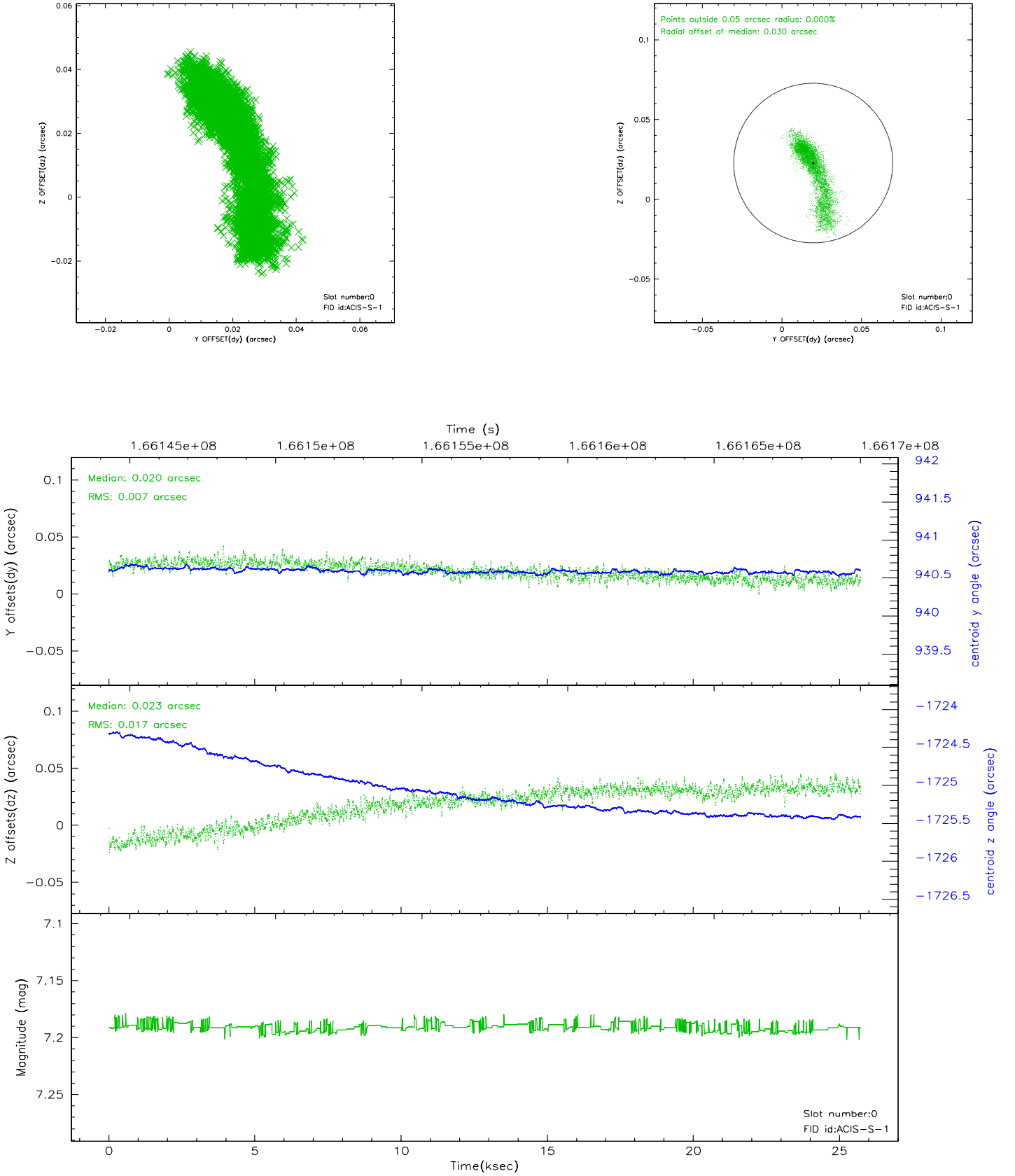


2.4.5 Slot 7

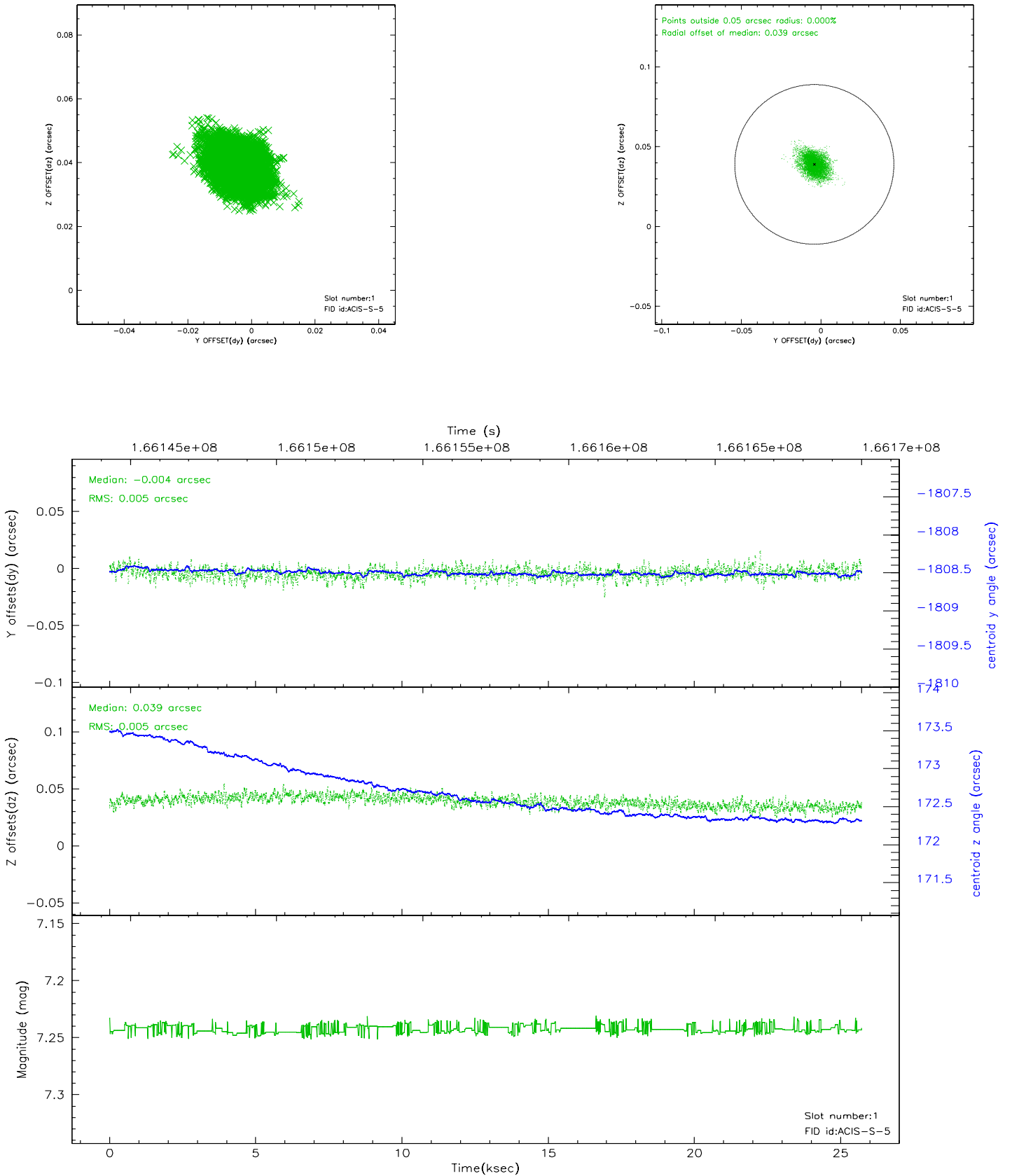


2.5 FID Slots

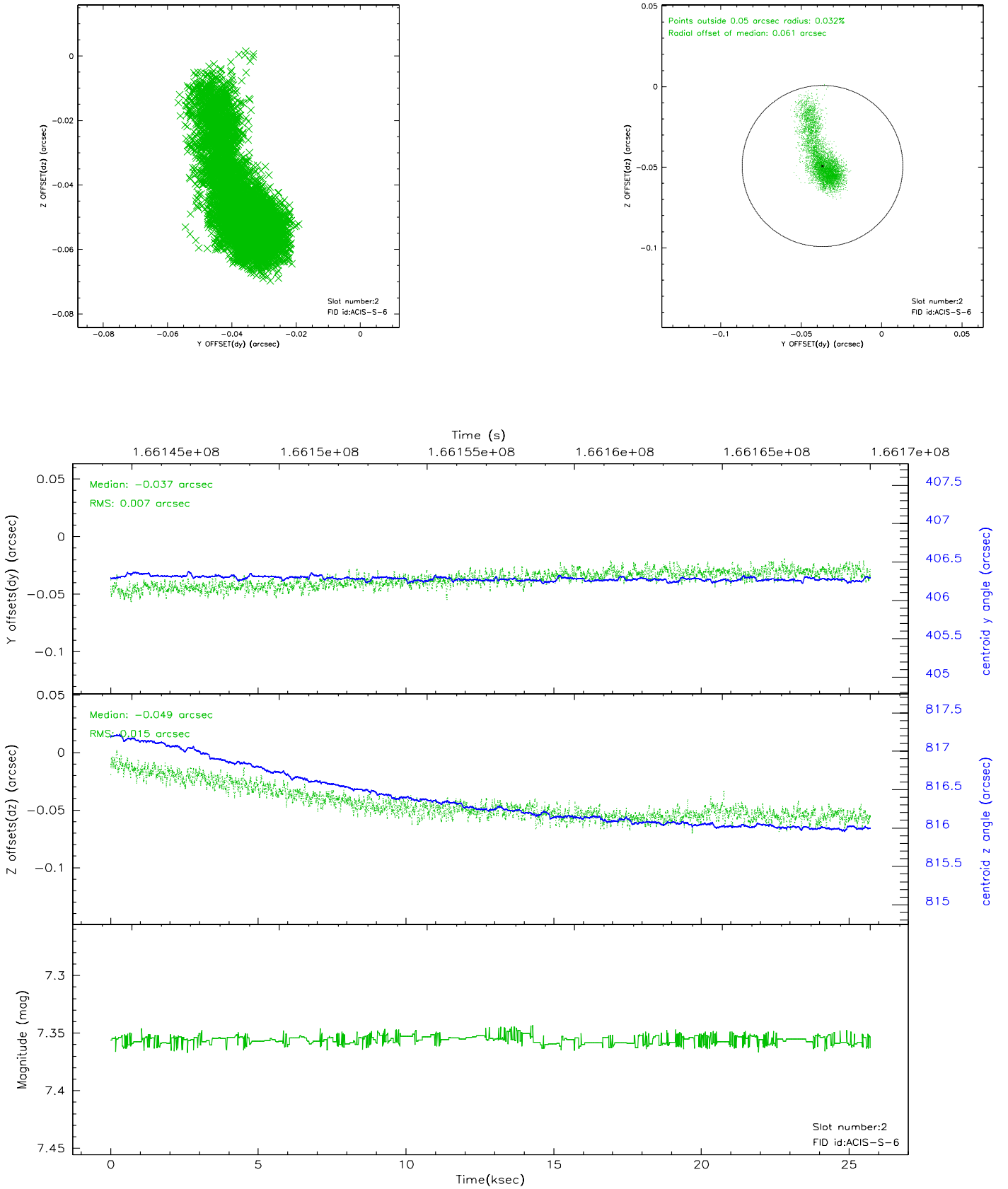
2.5.1 Slot 0



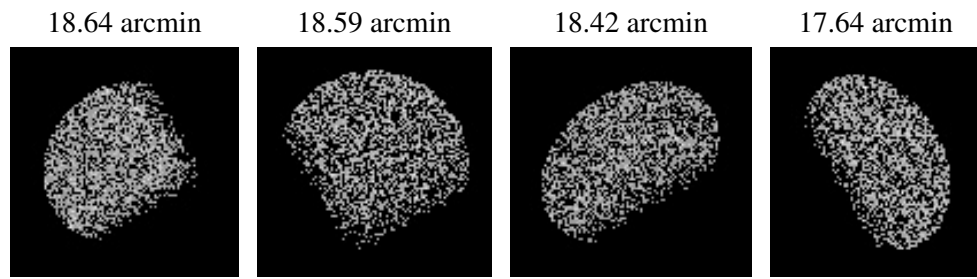
2.5.2 Slot 1



2.5.3 Slot 2



3 Point Sources



A Summary

A.1 Status

V&V Scientist	Jen Lauer
V&V Date (YYYY-MM-DD)	2006.07.30
V&V Edition	1
V&V Disposition and Status	OK
V&V Charge Time	25.251

A.2 Comments