

# V&V Reference Report

## L2 ASCDS Version : 7.6.8

Observation 3942 - L2 Version 001  
Chandra X-Ray Center

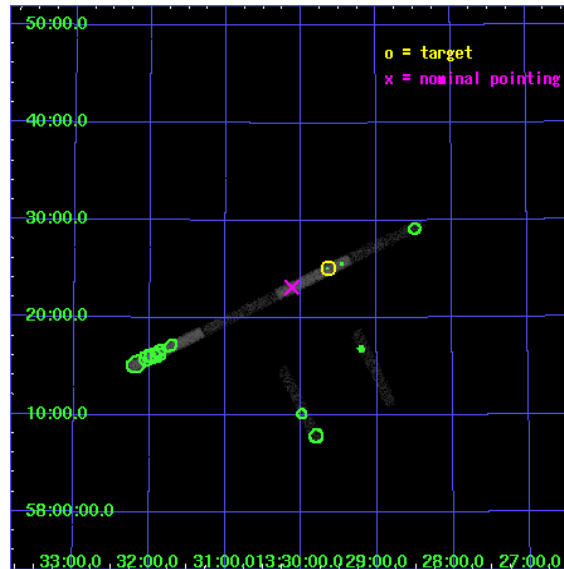
L2 Processing Date : Jul 4 2006

## Contents

<b>1</b>	<b>Front</b>	<b>2</b>
<b>2</b>	<b>OBI</b>	<b>3</b>
2.1	OBI . . . . .	3
2.1.1	Images . . . . .	3
2.1.2	Bias . . . . .	3
2.1.3	Parameters . . . . .	4
2.1.4	Events . . . . .	4
2.2	Compared Parameters . . . . .	5
2.3	Aspect . . . . .	6
2.4	Star Slots . . . . .	9
2.4.1	Slot 3 . . . . .	9
2.4.2	Slot 4 . . . . .	10
2.4.3	Slot 5 . . . . .	11
2.4.4	Slot 6 . . . . .	12
2.4.5	Slot 7 . . . . .	13
2.5	FID Slots . . . . .	14
2.5.1	Slot 0 . . . . .	14
2.5.2	Slot 1 . . . . .	15
2.5.3	Slot 2 . . . . .	16
<b>3</b>	<b>Point Sources</b>	<b>17</b>
<b>A</b>	<b>Summary</b>	<b>18</b>
A.1	Status . . . . .	18
A.2	Comments . . . . .	18

# 1 Front

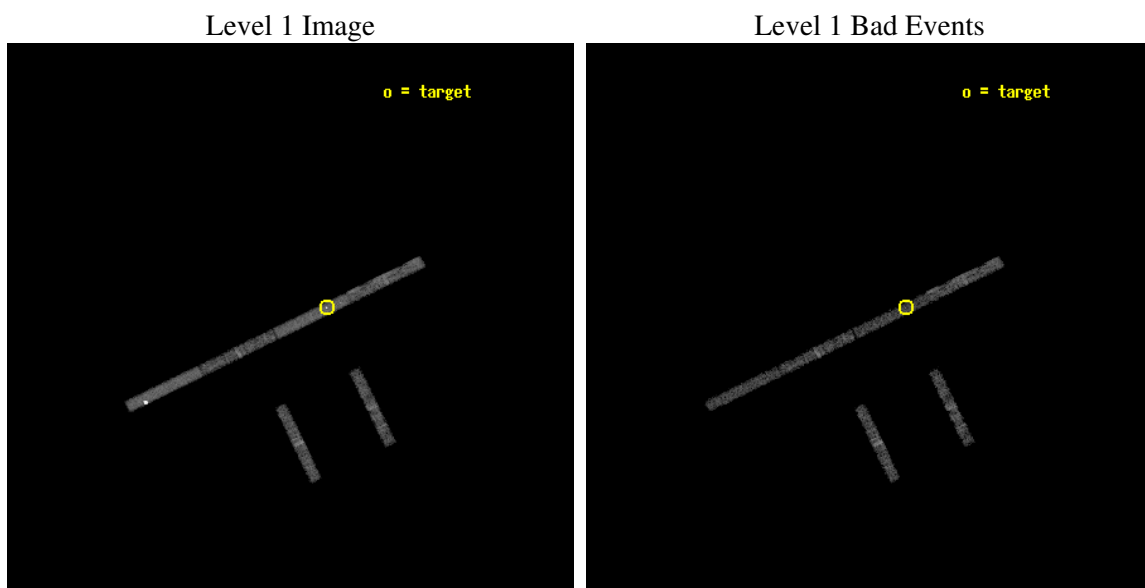
seq_num	600316
obs_id	3942
title	PROBING THE SPECTRAL VARIABILITY OF THE ULTRALUMINOUS X-RAY SOURCE NGC 5204 X-1
observer	Dr Timothy Roberts
object	NGC 5204 X-1
dtcycle	0
cycle	P
ra_targ	202.410833
dec_targ	58.418333
ra_nom	202.53070203067
dec_nom	58.385799951788
roll_nom	334.05166529945
revision	2
ontime	5512.4999061227
livetime	5207.2086989715
ontime2	5512.4999061227
ontime3	5512.4999061227
ontime5	5512.4999061227
ontime6	5512.4999061227
ontime7	5512.4999061227
ontime8	5512.4999061227
l2events	15245



## 2 OBI

### 2.1 OBI

#### 2.1.1 Images



#### 2.1.2 Bias

Chip 2

Chip 3

Chip 5



Chip 6

Chip 7

Chip 8



### 2.1.3 Parameters

obi_num	0
ascdsver	7.6.8
caldsver	3.2.2
date	2006-07-04T10:02:30
revision	2

sched_exp_time	5000.000000
ontime	5514.0085866153
ontime2	5514.0085866153
ontime3	5514.0085866153
ontime5	5514.0085866153
ontime6	5514.0085866153
ontime7	5514.0085866153
ontime8	5514.0085866153
l1events	56137

### 2.1.4 Events

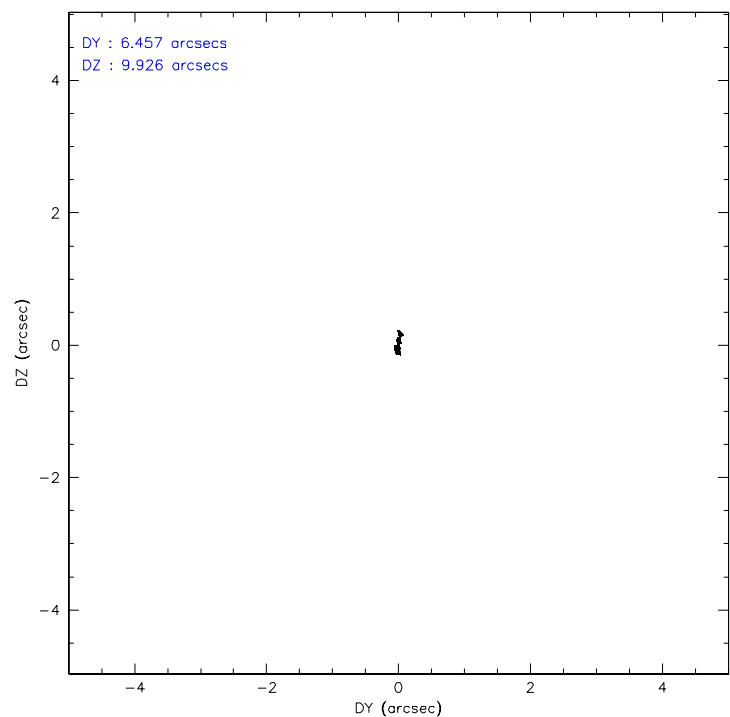
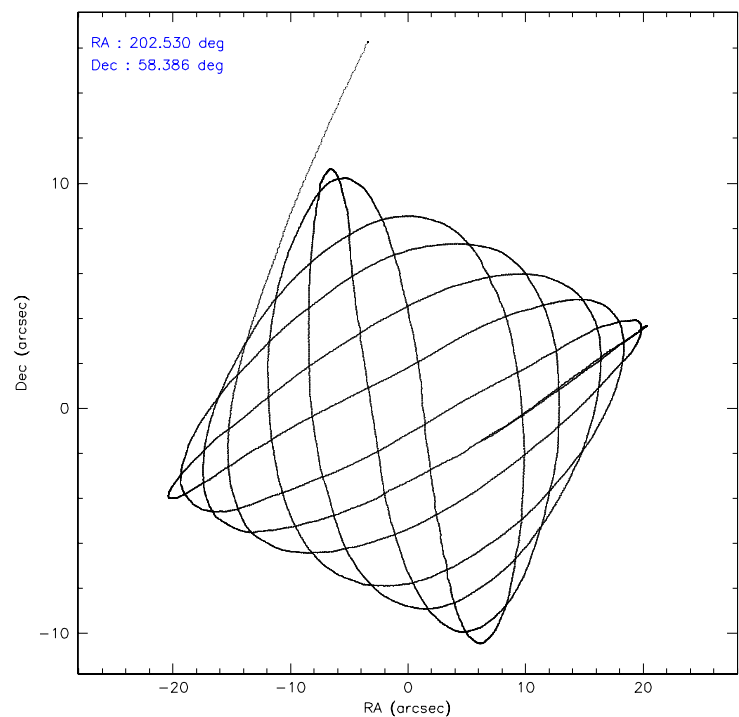
	ccd 2	ccd 3	ccd 5	ccd 6	ccd 7	ccd 8
level 1 events	6775	6276	16864	6430	10924	8868
rejected events	5830	5348	4370	5298	4243	7125
rejected %	86%	85%	25%	82%	38%	80%

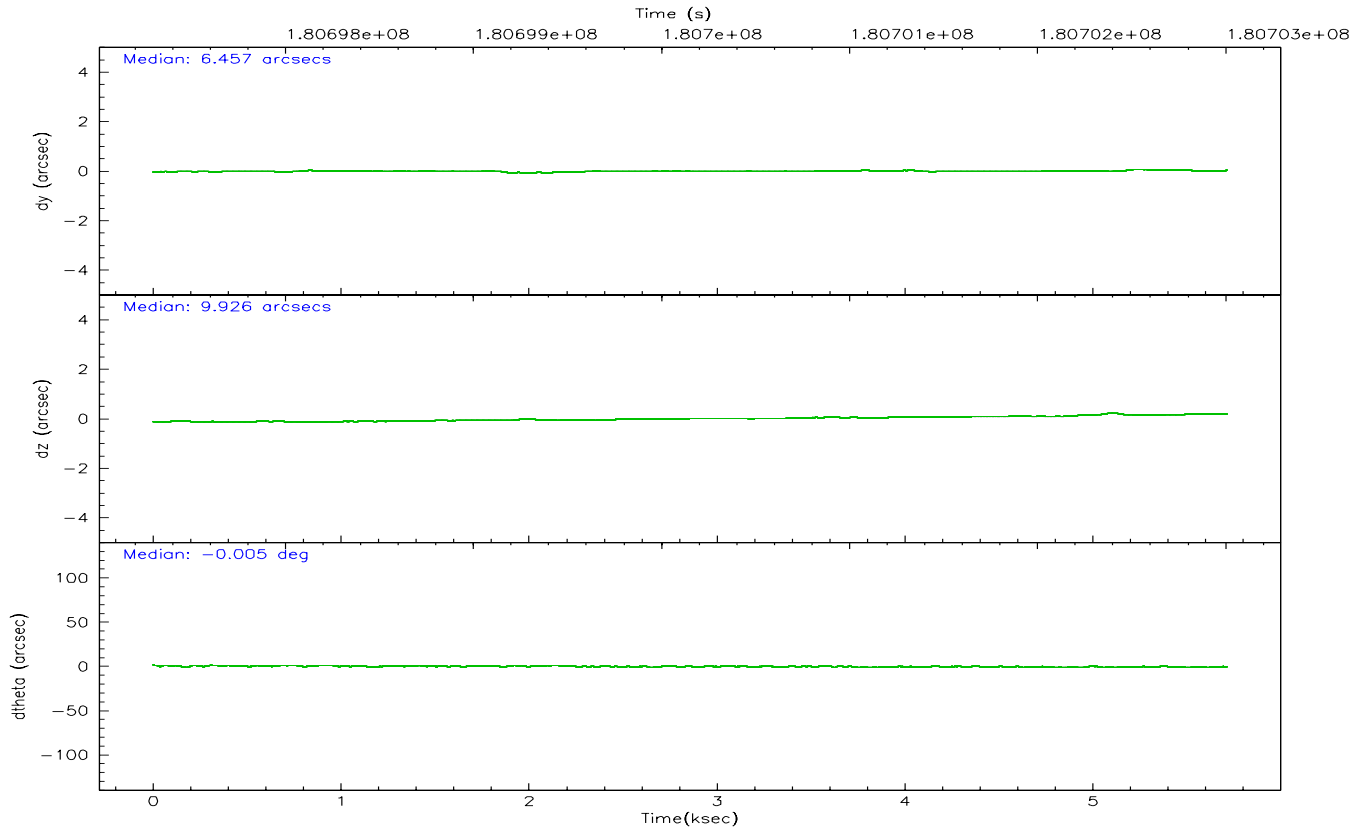
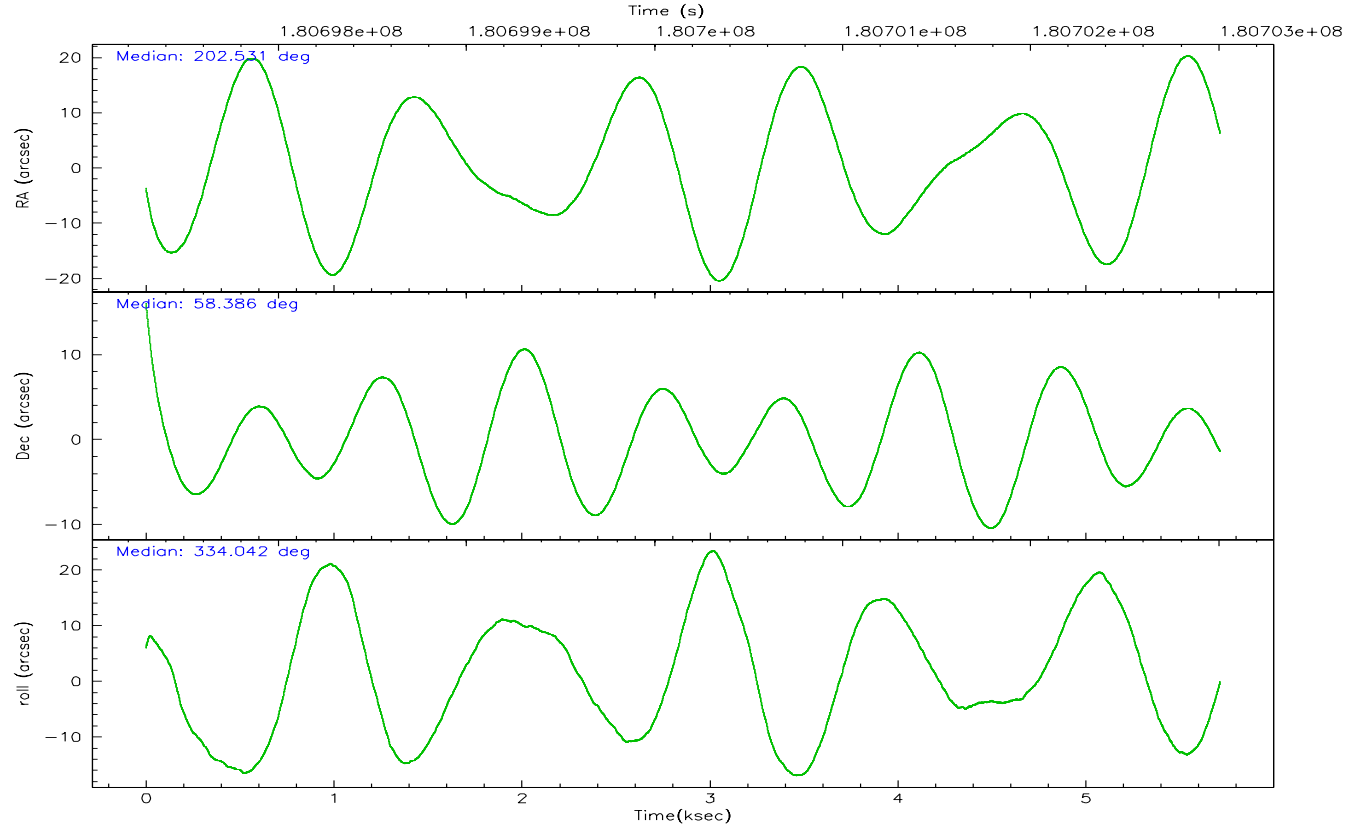
	ccd 2	ccd 3	ccd 5	ccd 6	ccd 7	ccd 8
grade 0 events	440	426	3945	568	948	665
	6%	6%	23%	8%	8%	7%
grade 1 events	3	3	30	1	9	2
	0%	0%	0%	0%	0%	0%
grade 2 events	135	135	5035	168	1538	310
	1%	2%	29%	2%	14%	3%
grade 3 events	122	135	237	123	577	169
	1%	2%	1%	1%	5%	1%
grade 4 events	133	112	349	135	599	176
	1%	1%	2%	2%	5%	1%
grade 5 events	211	202	457	202	497	273
	3%	3%	2%	3%	4%	3%
grade 6 events	115	120	2930	138	3019	423
	1%	1%	17%	2%	27%	4%
grade 7 events	5616	5143	3881	5095	3737	6850
	82%	81%	23%	79%	34%	77%

## 2.2 Compared Parameters

Parameter	Planned	Actual	Parameter	Planned	Actual
Instrument	ACIS	ACIS	Obspar format version number	6	6
Detector	ACIS-235678	ACIS-235678	Obspar file type	PREDICTED	ACTUAL
Grating	NONE	NONE	Obspar update status	NONE	UPDATED
Data mode	FAINT	FAINT	On-chip summing requested	N	N
Observation mode	POINTING	POINTING	Subarray requested	1/8	1/8
Pointing RA	202.478879	202.5307020306747	Subarray start row	0	449
Pointing Dec	58.383482	58.38579995178834	Subarray row count	1024	128
Pointing Roll	333.939164	334.0516652994472	Alternating exposures requested	N	N
SIM focus pos (mm)	-0.684267	-0.6828225247311905	Primary exposure time	0.000000	0.7
SIM defocus (mm)	0	0.001444936568705701			
SIM translation stage pos (mm)	-190.132523	-190.1400660498719			
SIM translation stage offset (mm)	0	0.00754346686406393			
Observation start time	180698009.184000	180696781.68844			
Observation start date	2003-09-23T09:52:25	2003-09-23T09:33:01			
Observation end time	180703009.184000	180703563.60123			
Observation end date	2003-09-23T11:15:45	2003-09-23T11:26:03			
Read mode	TIMED	TIMED			

## 2.3 Aspect





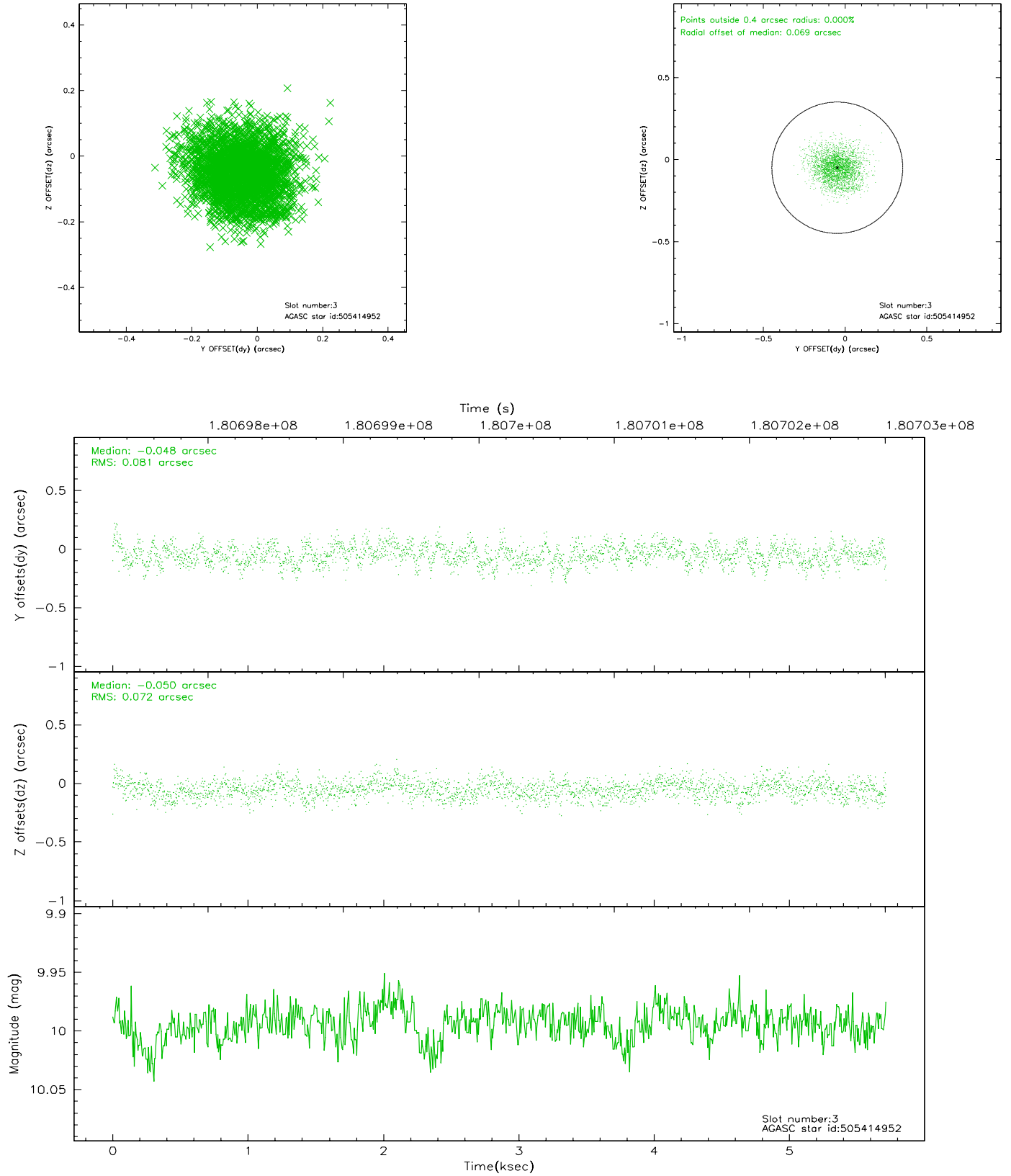
### Slot Statistics

slot	status	id	mag	n_pts	med_dy	med_dz	dr1	dr2	ra	dec	mean_y	mean_z
0	FID	ACIS-S-2	7.09	1394	-0.045	0.010	0.006	0.010	0.000000	0.000000	-759.21	-1731.18
1	FID	ACIS-S-4	7.20	1394	0.021	0.019	0.005	0.008	0.000000	0.000000	2153.63	176.27
2	FID	ACIS-S-5	7.22	1394	-0.008	-0.020	0.006	0.010	0.000000	0.000000	-1810.70	171.04
3	GUIDE	505414952	9.99	2784	-0.048	-0.050	0.117	0.185	203.527988	58.651569	1334.04	1744.30
4	GUIDE	505419952	10.10	2784	0.063	-0.057	0.151	0.250	201.880700	58.804366	-1669.44	876.06
5	GUIDE	505421936	8.88	2787	-0.023	0.126	0.083	0.136	201.854843	57.887820	-291.55	-2122.06
6	GUIDE	505421968	8.20	2787	0.059	-0.032	0.071	0.112	202.022601	58.209270	-503.04	-941.66
7	GUIDE	505422344	8.61	2788	-0.052	0.023	0.071	0.115	202.767077	57.846963	1344.18	-1491.41

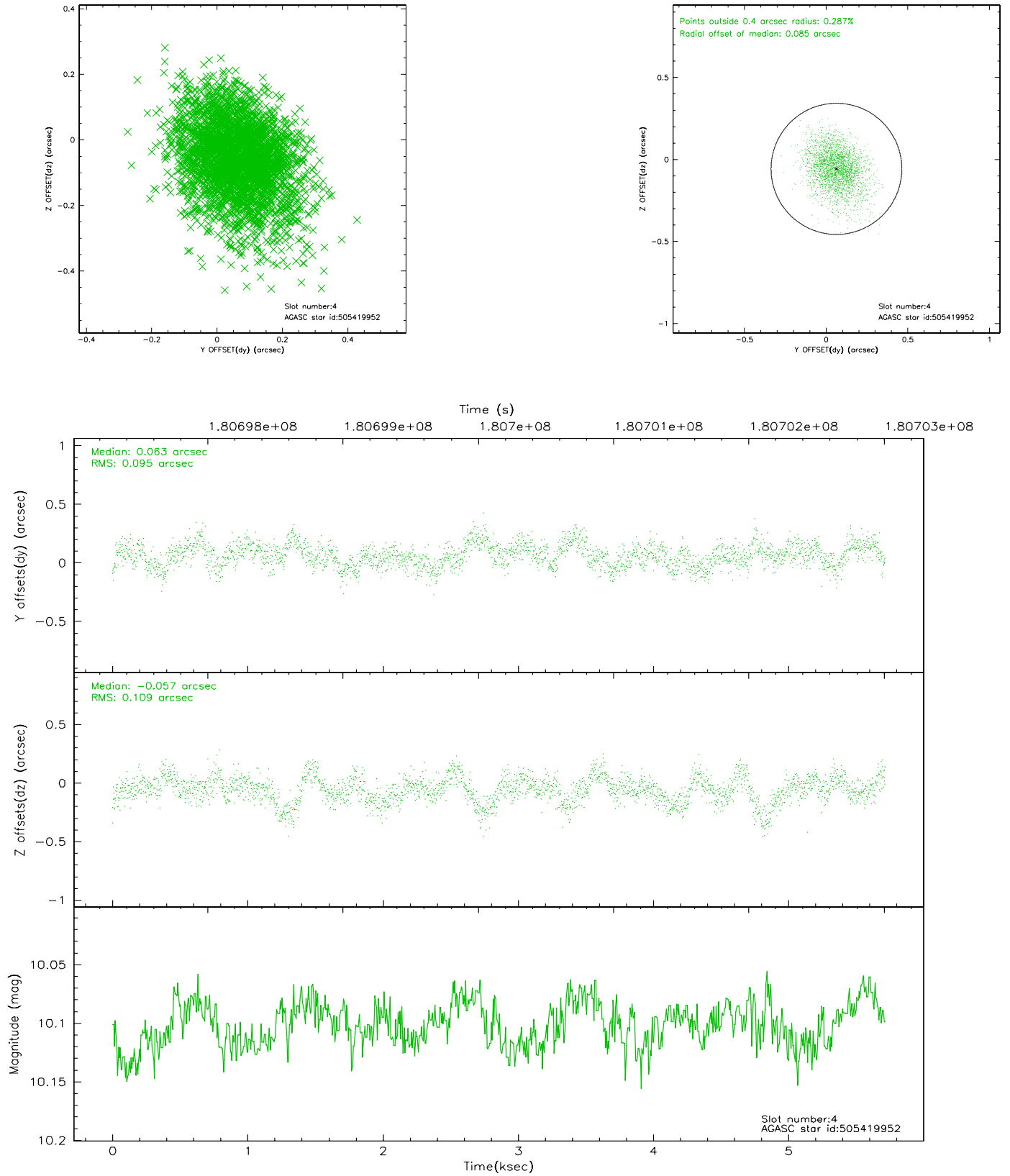


## 2.4 Star Slots

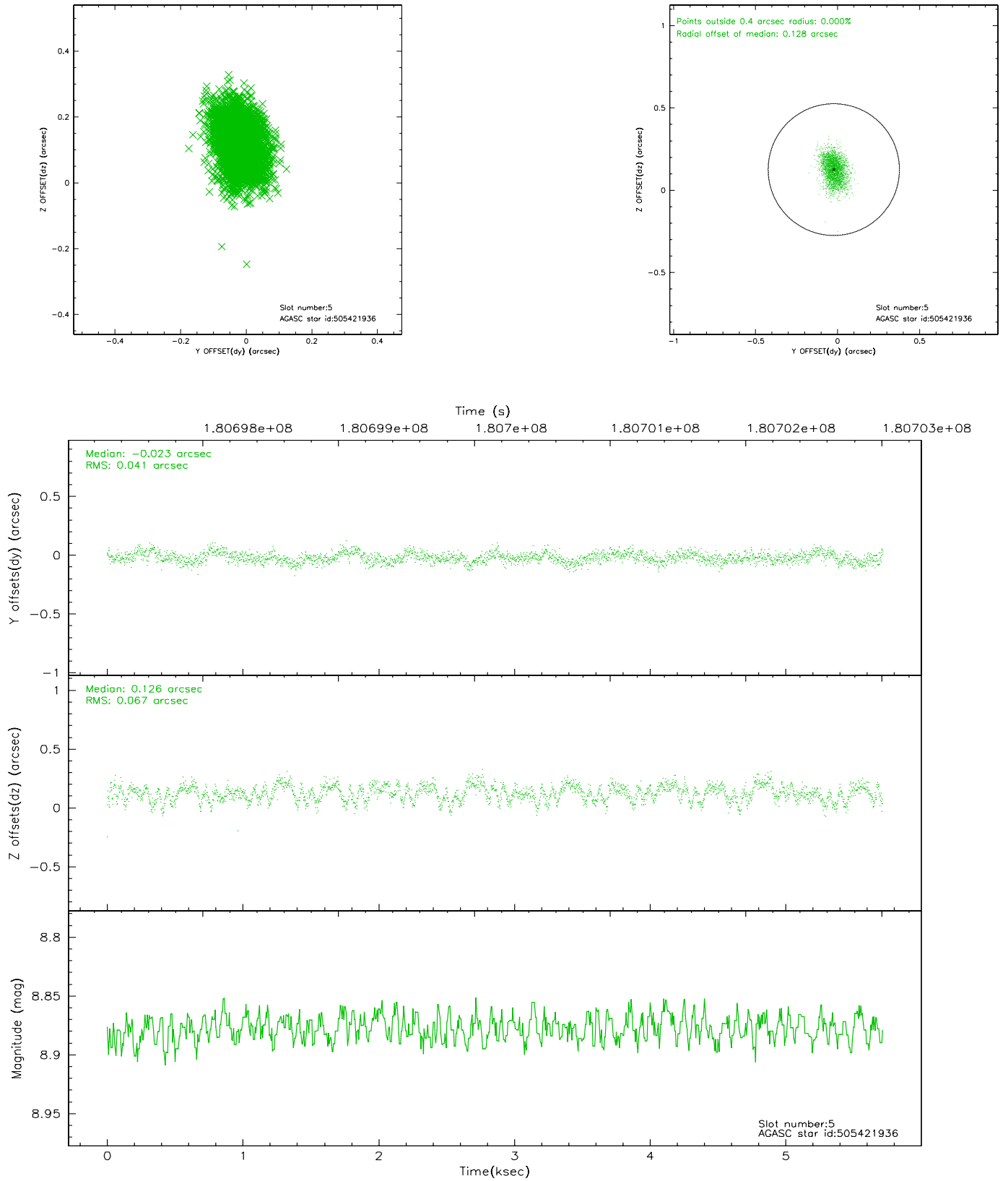
### 2.4.1 Slot 3



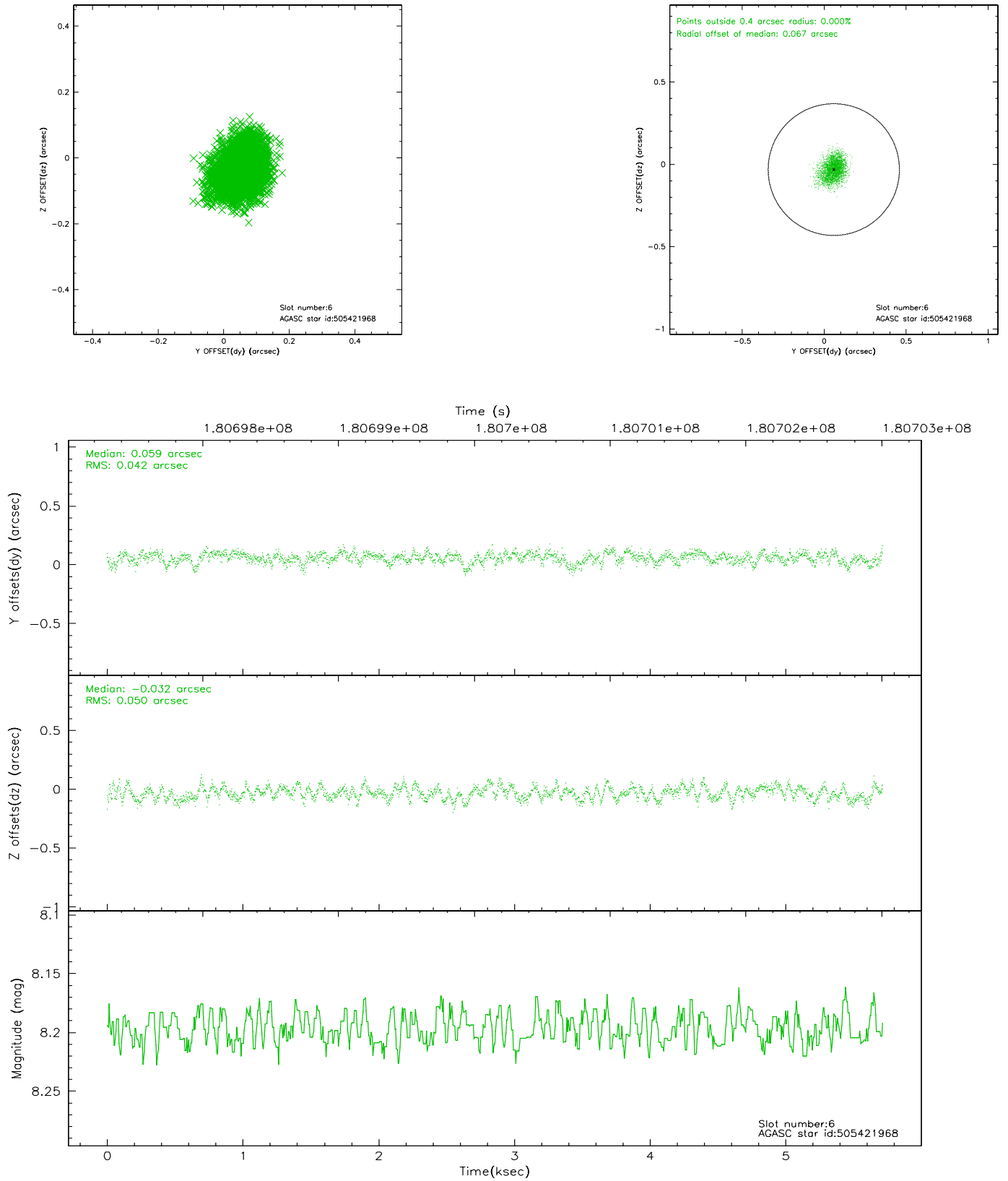
## 2.4.2 Slot 4



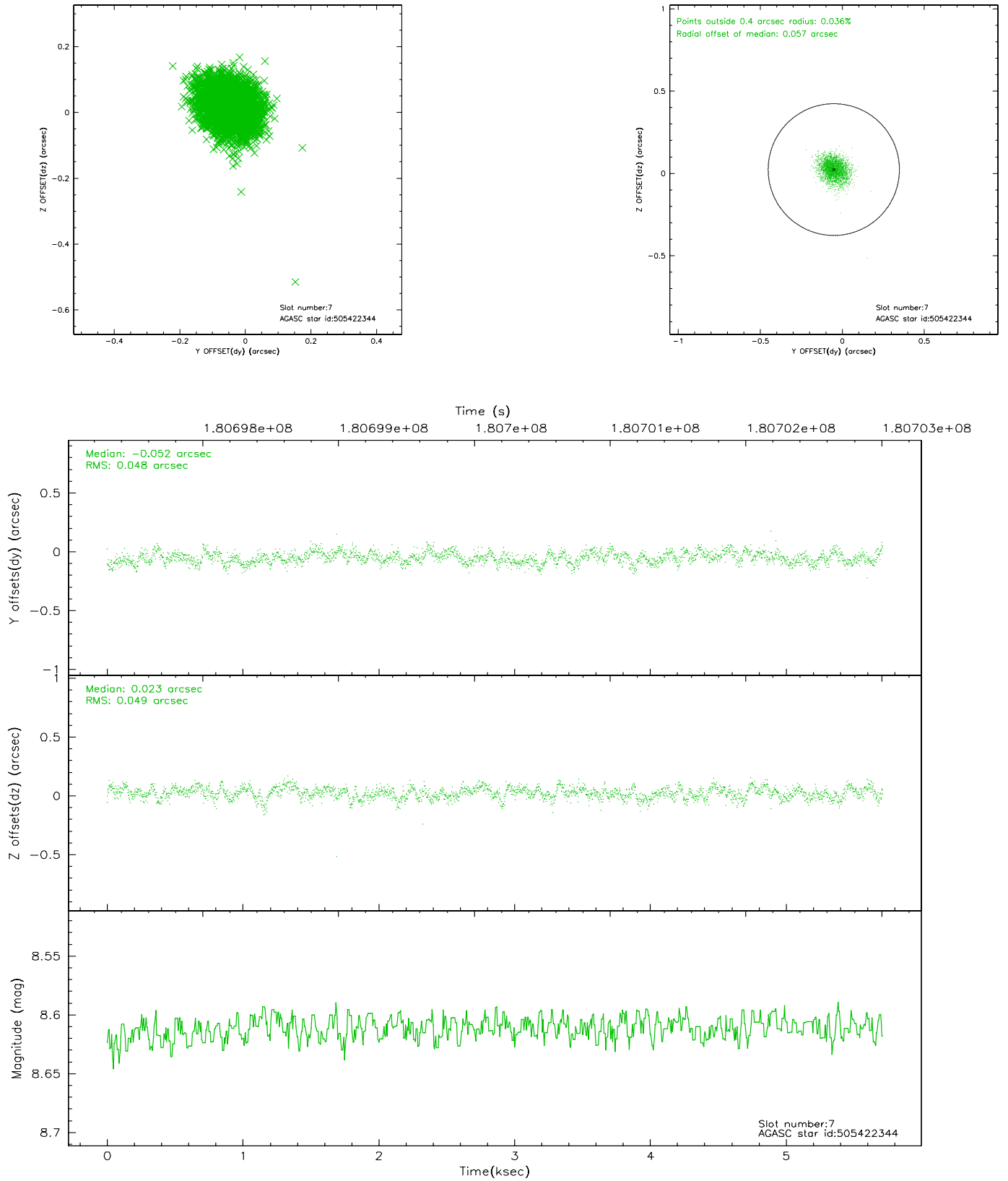
### 2.4.3 Slot 5



## 2.4.4 Slot 6

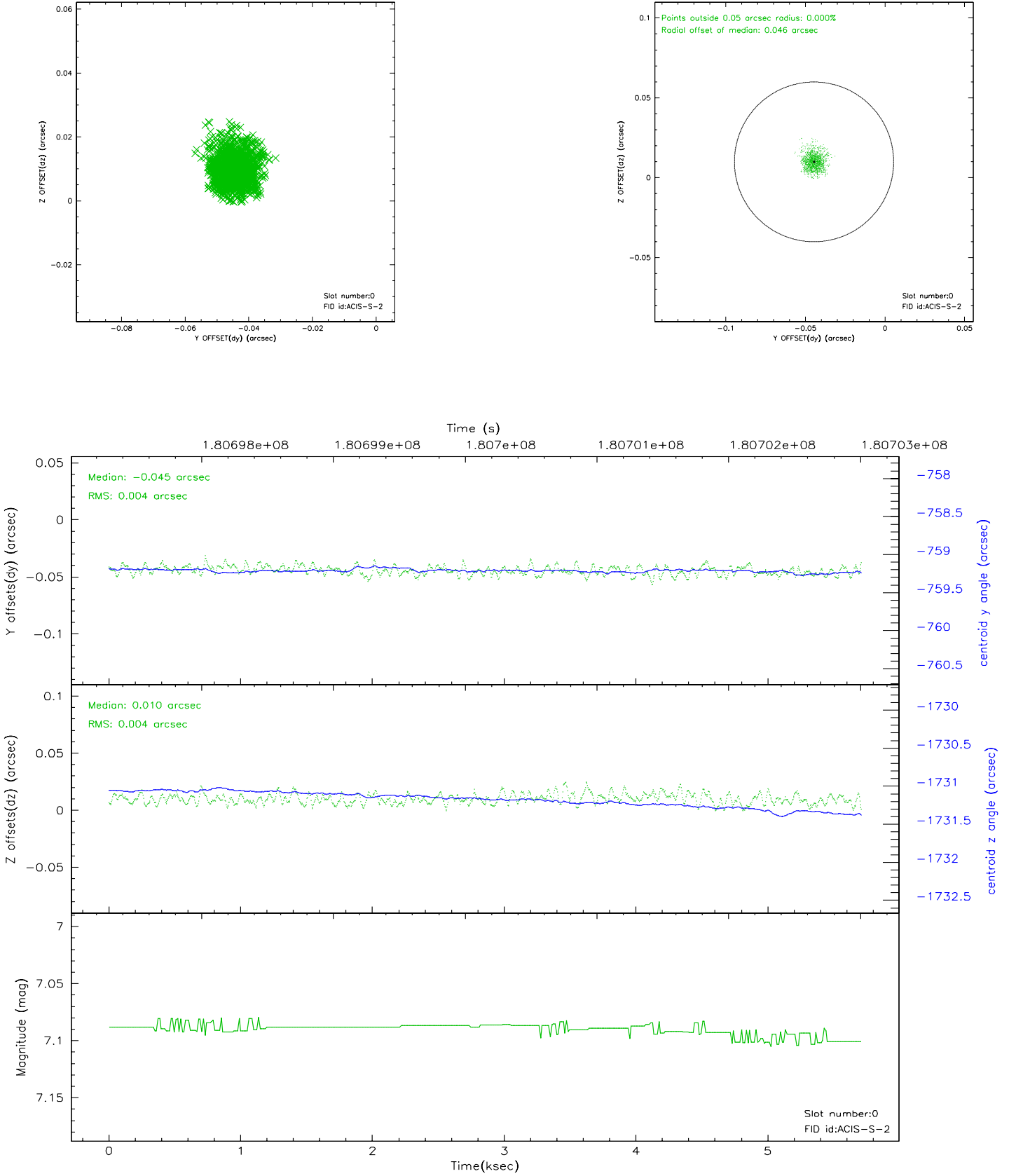


## 2.4.5 Slot 7

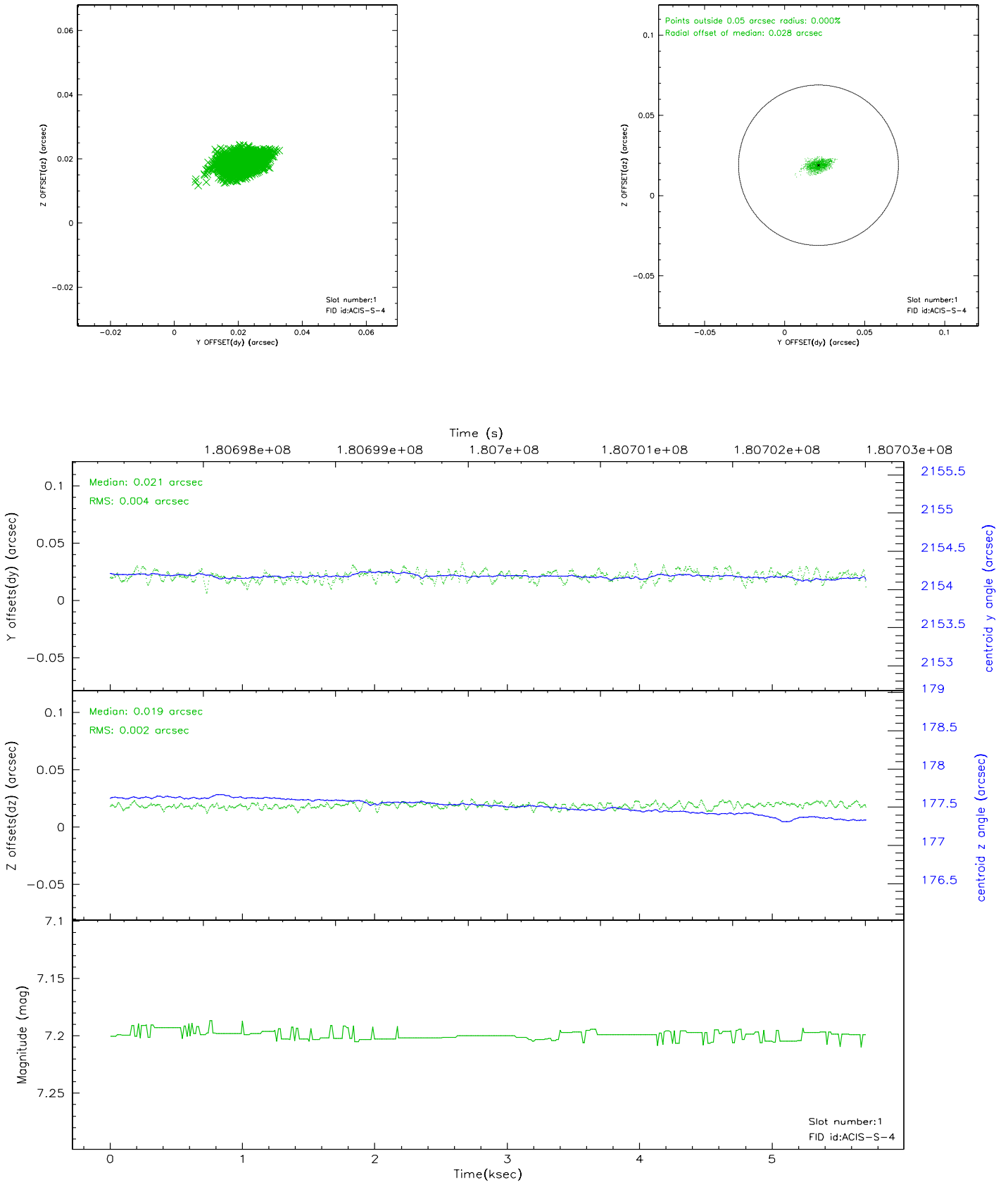


## 2.5 FID Slots

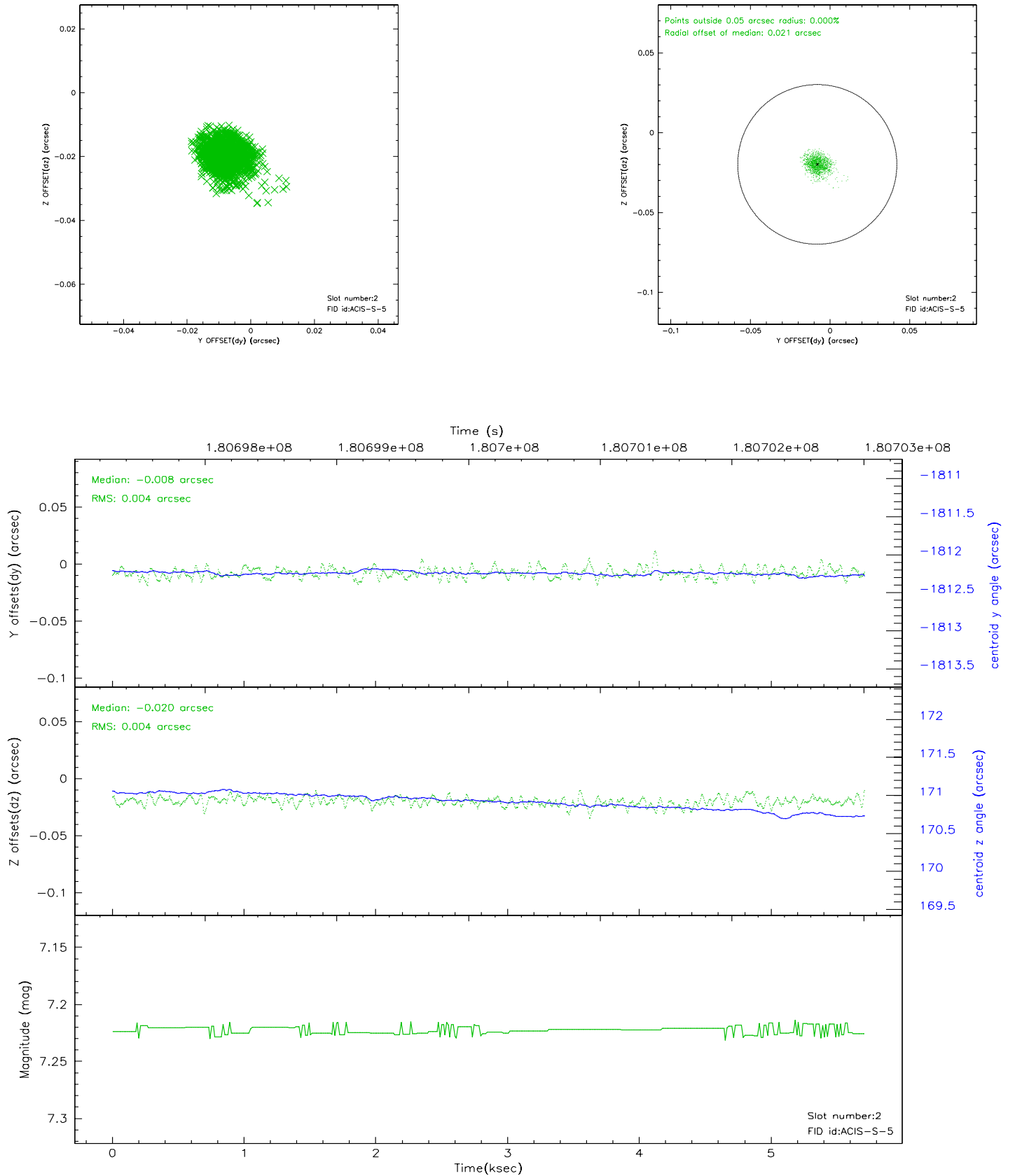
### 2.5.1 Slot 0



## 2.5.2 Slot 1

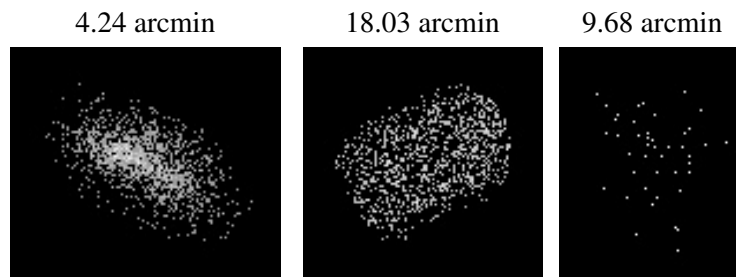


### 2.5.3 Slot 2





### 3 Point Sources



## A Summary

### A.1 Status

V&V Scientist	Beth Sundheim
V&V Date (YYYY-MM-DD)	2006.07.05
V&V Edition	1
V&V Disposition and Status	OK
V&V Charge Time	5.513

### A.2 Comments