

V&V Reference Report

L2 ASCDS Version : 8.4.5

Observation 3941 - L2 Version 3
Chandra X-Ray Center

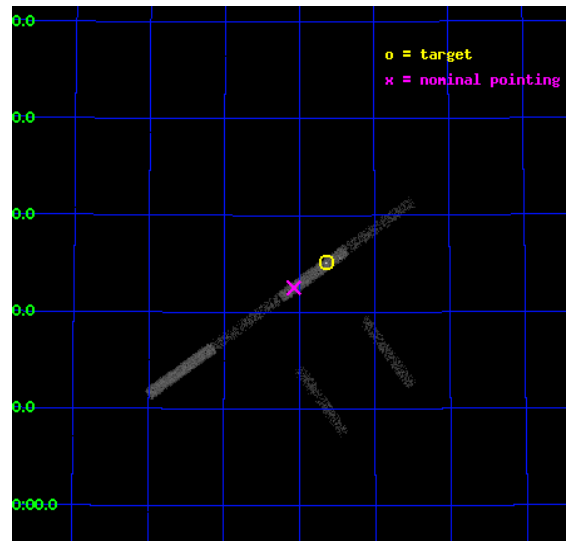
L2 Processing Date : Nov 3 2012

Contents

1	Front	2
2	OBI	3
2.1	OBI	3
2.1.1	Images	3
2.1.2	Bias	3
2.1.3	Parameters	4
2.1.4	Events	4
2.2	Compared Parameters	5
2.3	Aspect	6
2.4	Star Slots	9
2.4.1	Slot 3	9
2.4.2	Slot 4	10
2.4.3	Slot 5	11
2.4.4	Slot 6	12
2.4.5	Slot 7	13
2.5	FID Slots	14
2.5.1	Slot 0	14
2.5.2	Slot 1	15
2.5.3	Slot 2	16
A	Summary	17
A.1	Status	17
A.2	Comments	17

1 Front

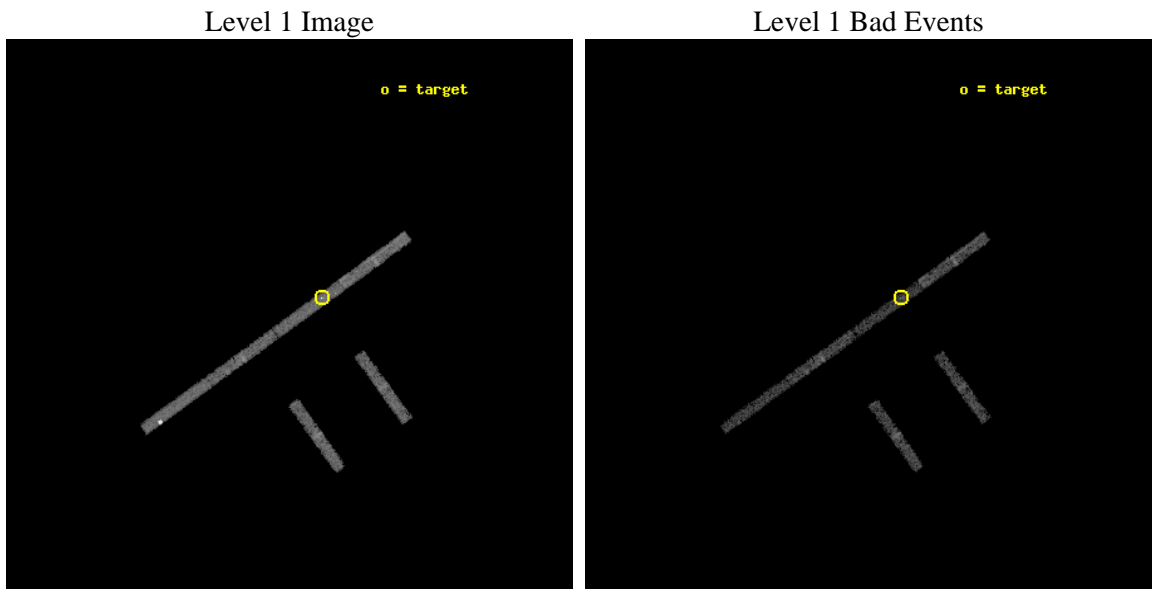
seq_num	600315	Sequence number
obs_id	3941	Observation id
title	PROBING THE SPECTRAL VARIABILITY OF THE ULTRALUMINOUS X-RAY SOURCE NGC 5204 X-1	Proposal title
observer	Dr Timothy Roberts	Principal investigator
object	NGC 5204 X-1	Source name
dtcycle	0	
cycle	P	events from which exps? Prim/Second/Both
ra_targ	202.410833	Observer's specified target RA [deg]
dec_targ	58.418333	Observer's specified target Dec [deg]
ra_nom	202.51825476876	Nominal RA [deg]
dec_nom	58.375382093321	Nominal Dec [deg]
roll_nom	324.14756457394	Nominal Roll [deg]
revision	3	Processing version of data
ontime	5163.1999120712	Sum of GTIs [s]
livetime	4877.2535064907	Livetime [s]
ontime2	5163.1999120712	Sum of GTIs [s]
ontime3	5163.1999120712	Sum of GTIs [s]
ontime5	5163.1999120712	Sum of GTIs [s]
ontime6	5163.1999120712	Sum of GTIs [s]
ontime7	5163.1999120712	Sum of GTIs [s]
ontime8	5163.1999120712	Sum of GTIs [s]
l2events	9745	Number of level 2 events



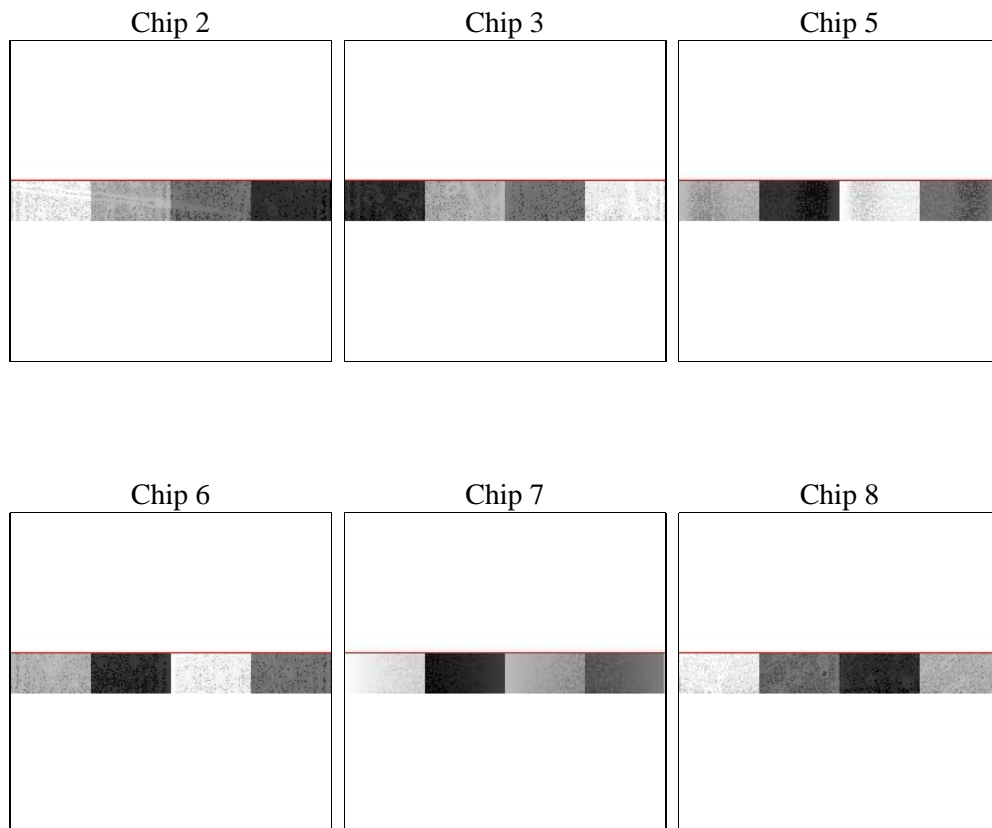
2 OBI

2.1 OBI

2.1.1 Images



2.1.2 Bias



2.1.3 Parameters

obi_num	0	Obi number	sched_exp_time	5000.000000	[s] Scheduled observation exposure time
ascdsver	8.4.5	Processing system revision	ontime	5163.1999120712	Sum of GTIs [s]
caldsver	4.5.2	 	ontime2	5163.1999120712	Sum of GTIs [s]
date	2012-11-03T19:38:27	Date and time of file creation	ontime3	5163.1999120712	Sum of GTIs [s]
revision	3	Processing version of data	ontime5	5163.1999120712	Sum of GTIs [s]
			ontime6	5163.1999120712	Sum of GTIs [s]
			ontime7	5163.1999120712	Sum of GTIs [s]
			ontime8	5163.1999120712	Sum of GTIs [s]
			l1events	53820	Number of level 1 events

2.1.4 Events

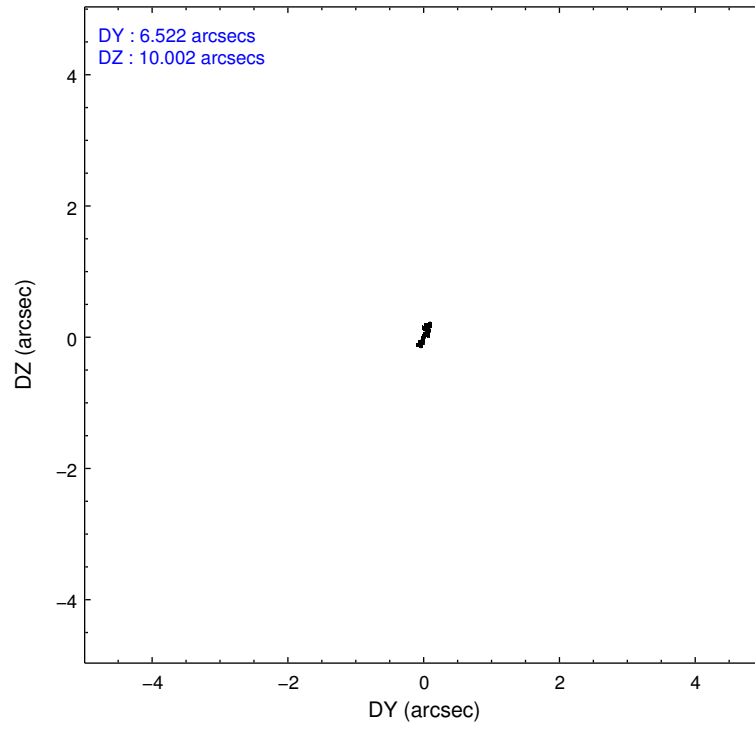
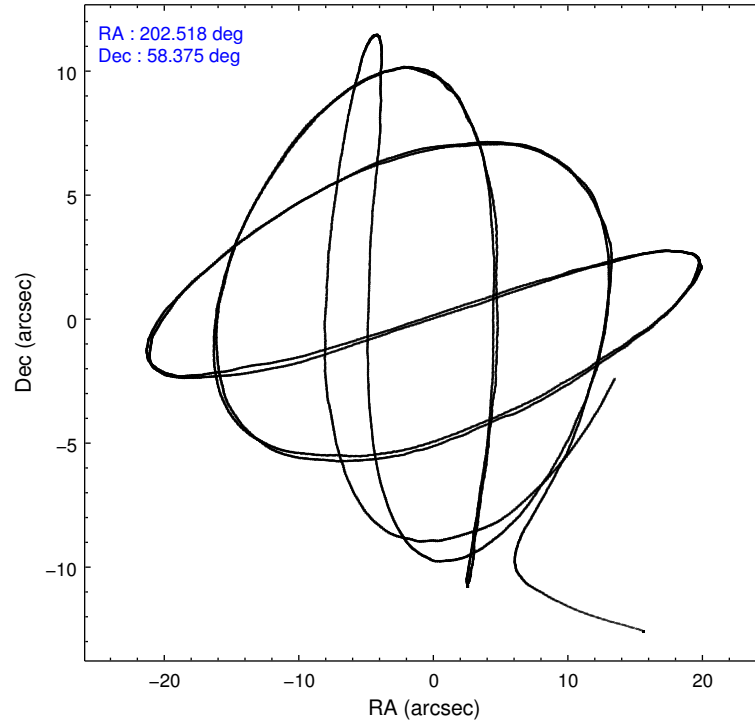
	ccd 2	ccd 3	ccd 5	ccd 6	ccd 7	ccd 8
level 1 events	6538	6095	15059	6803	9668	9657
rejected events	5947	5493	5400	6170	4571	8176
rejected %	90%	90%	35%	90%	47%	84%

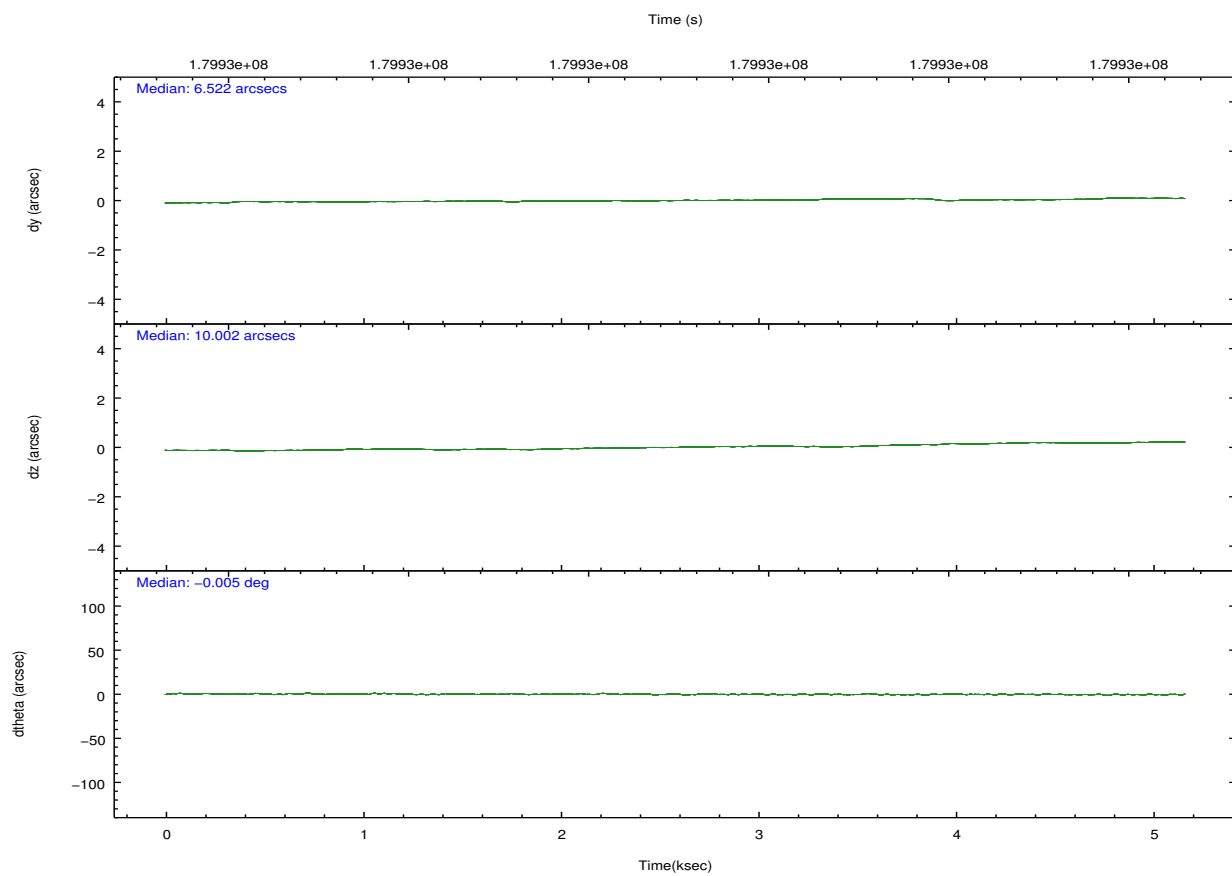
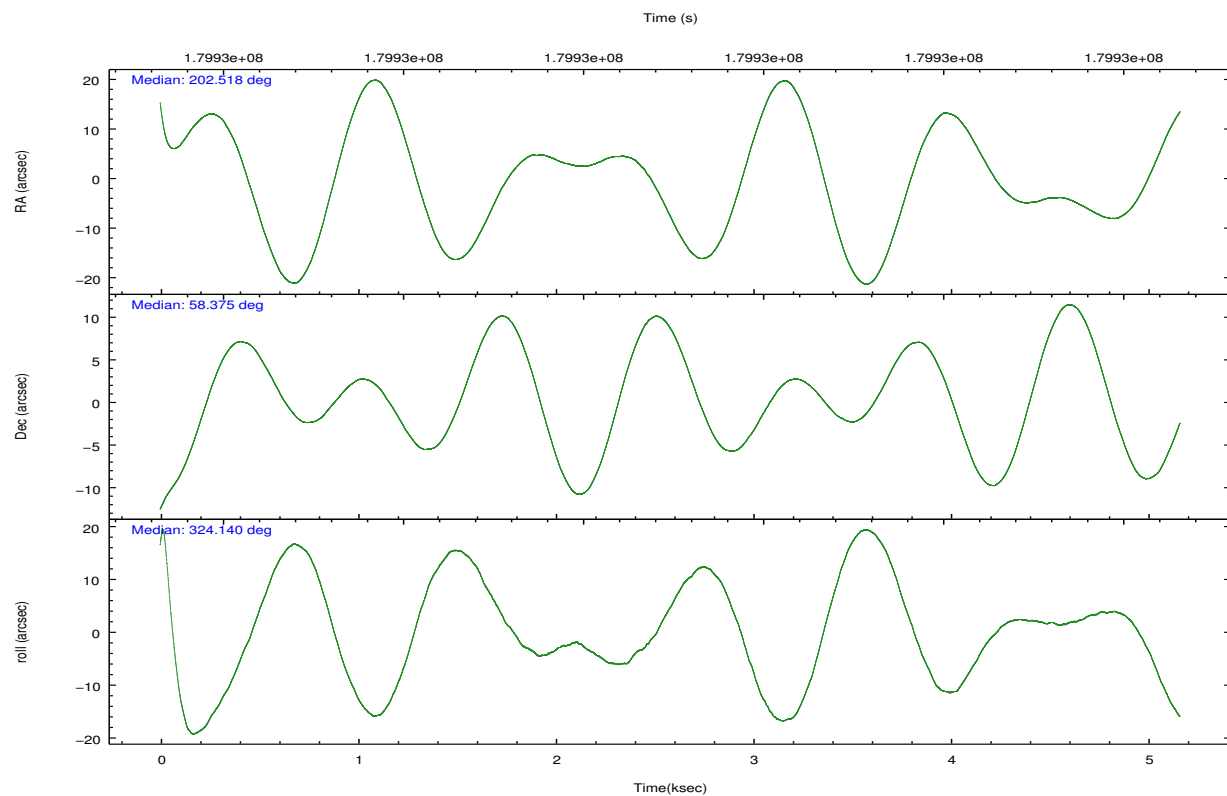
	ccd 2	ccd 3	ccd 5	ccd 6	ccd 7	ccd 8
grade 0 events	258	240	7012	227	1194	380
	3%	3%	46%	3%	12%	3%
grade 1 events	2	4	58	0	31	1
	0%	0%	0%	0%	0%	0%
grade 2 events	119	100	1916	110	1306	372
	1%	1%	12%	1%	13%	3%
grade 3 events	108	127	243	117	641	189
	1%	2%	1%	1%	6%	1%
grade 4 events	101	110	287	117	600	185
	1%	1%	1%	1%	6%	1%
grade 5 events	219	177	648	222	722	285
	3%	2%	4%	3%	7%	2%
grade 6 events	104	126	1627	139	1822	550
	1%	2%	10%	2%	18%	5%
grade 7 events	5627	5211	3268	5871	3352	7695
	86%	85%	21%	86%	34%	79%

2.2 Compared Parameters

Parameter	Planned	Actual	Parameter	Planned	Actual
Instrument	ACIS	ACIS	Obspar format version number	7	7
Detector	ACIS-235678	ACIS-235678	Obspar file type	PREDICTED	ACTUAL
Grating	NONE	NONE	Obspar update status	NONE	UPDATED
Data mode	FAINT	FAINT	Number of optional ACIS chips dropped	0	0
Observation mode	POINTING	POINTING	On-chip summing requested	N	N
[deg] Pointing RA	202.466419	202.518254768764	Subarray requested	CUSTOM	1/8
[deg] Pointing Dec	58.377870	58.37538209332084	Subarray start row	449	449
[deg] Pointing Roll	324.034981	324.1475645739445	Subarray row count	128	128
[mm] SIM focus pos	-0.684267	-0.6828225247311905	Alternating exposures requested	N	N
[mm] SIM defocus	0	0.001444936568705701	[s] Primary exposure time	0.000000	0.7
[mm] SIM translation stage pos	-190.132523	-190.1400660498719			
[mm] SIM translation stage offset	0	0.00754346686406393			
[s] Observation start time (MET)	179928061.184000	179926895.44292			
Observation start date	2003-09-14T11:59:57	2003-09-14T11:41:35			
[s] Observation end time (MET)	179933061.184000	179934308.75574			
Observation end date	2003-09-14T13:23:17	2003-09-14T13:45:08			
Read mode	TIMED	TIMED			

2.3 Aspect



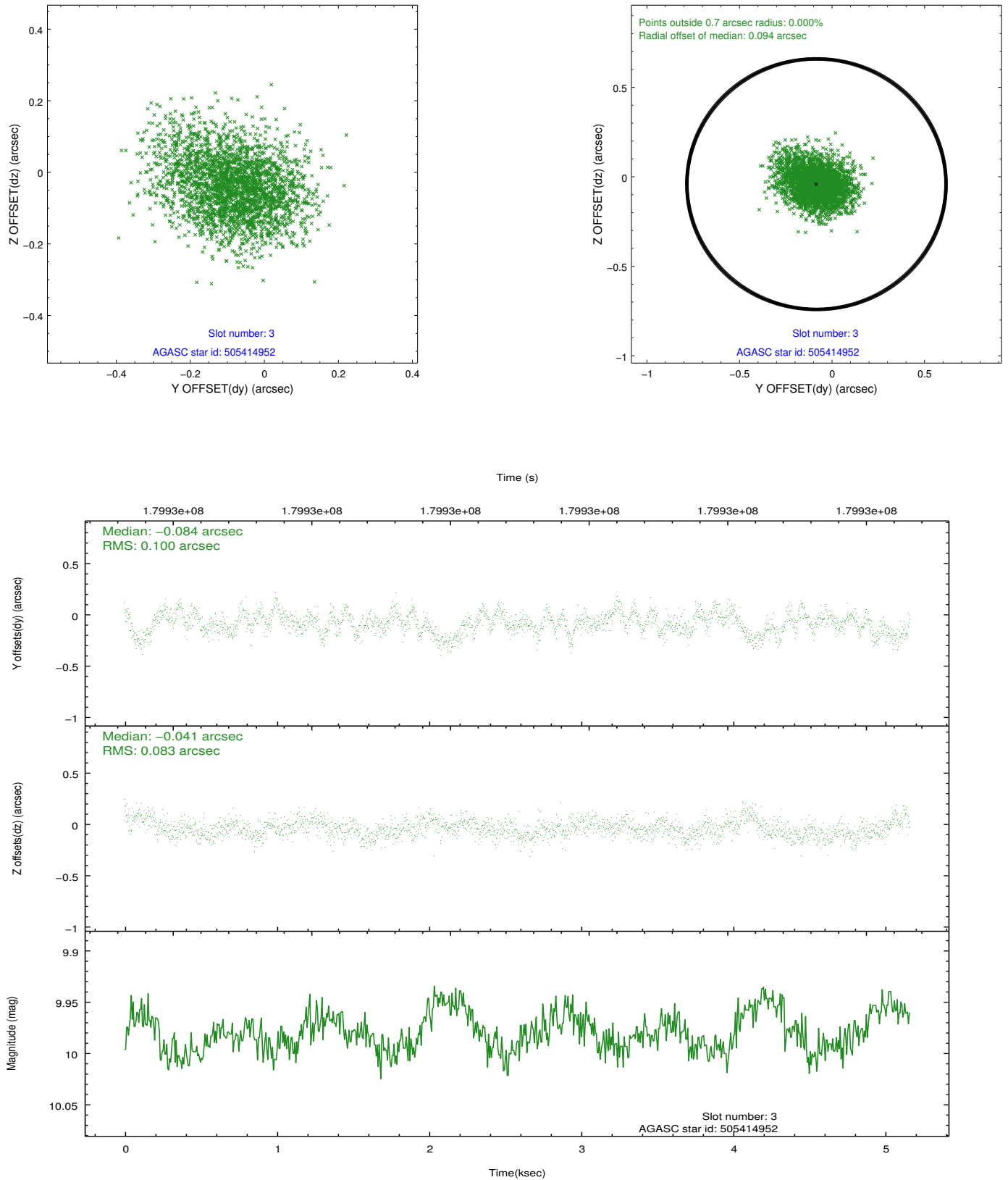


Slot Statistics

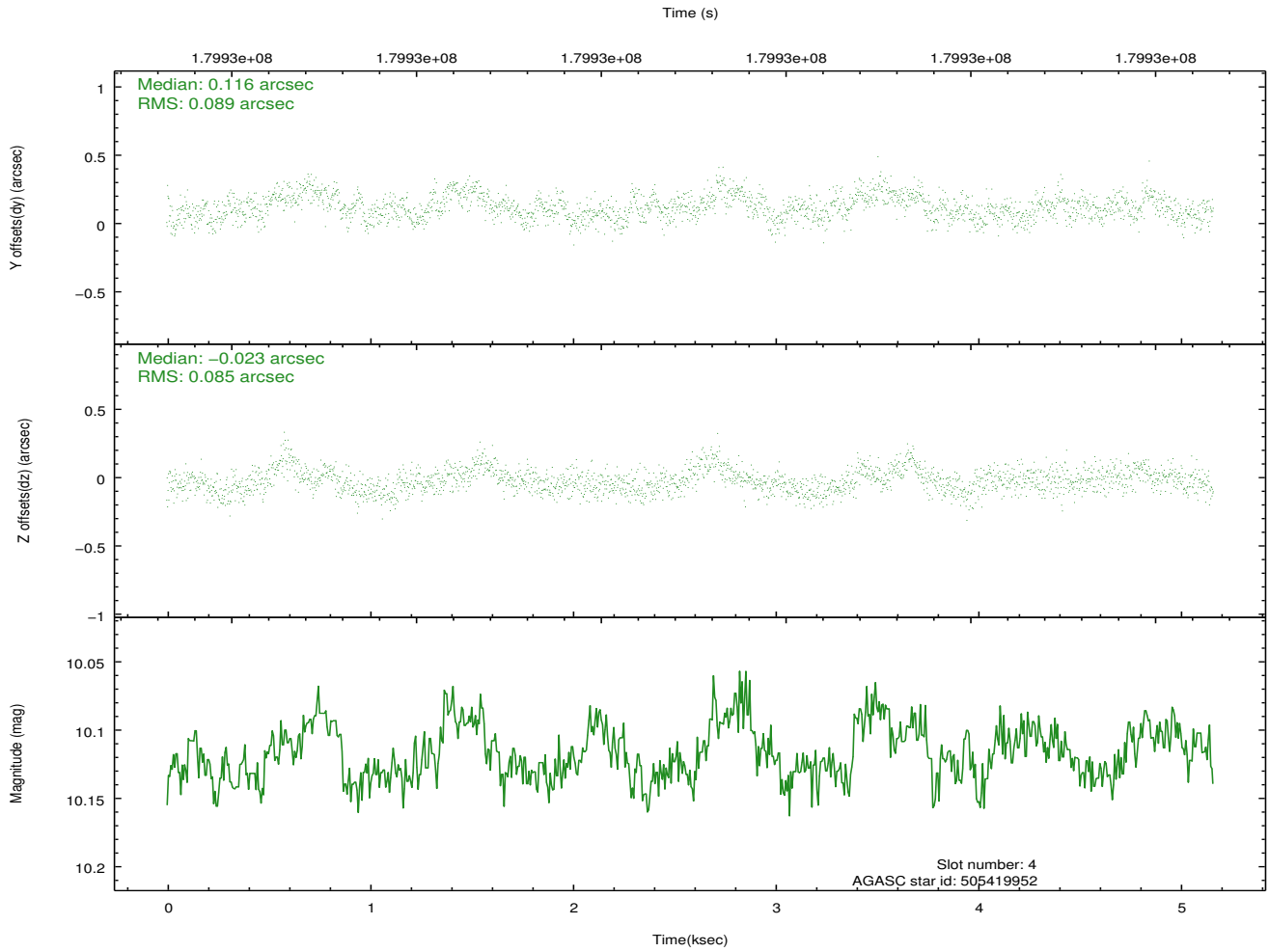
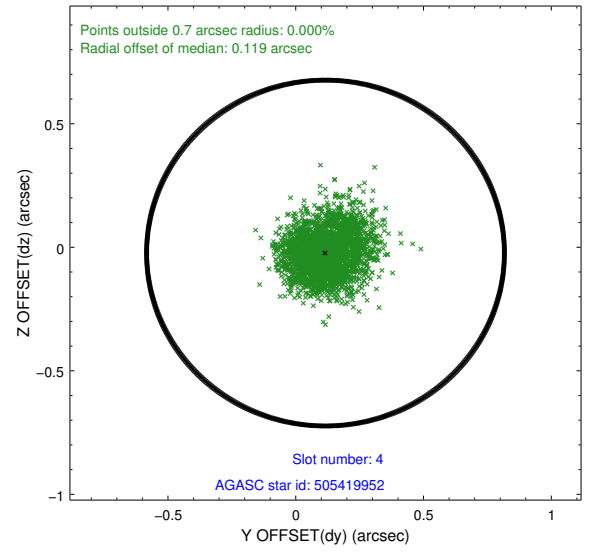
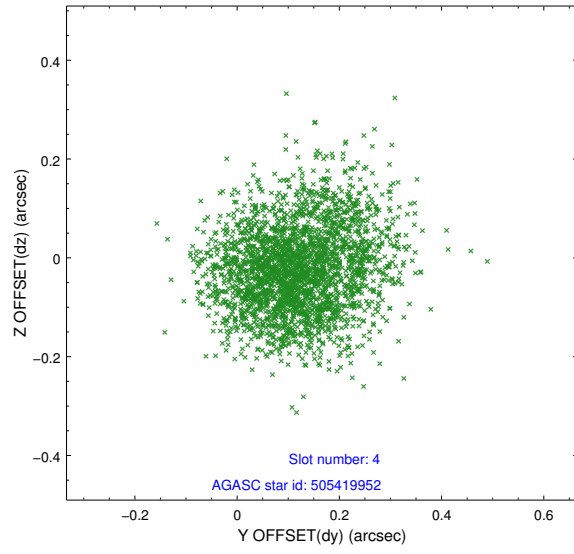
slot	status	id	mag	n_pts	med_dy	med_dz	dr1	dr2	ra	dec	mean_y	mean_z
0	FID	ACIS-S-1	7.18	1260	-0.007	-0.020	0.008	0.015	0.000000	0.000000	936.76	-1726.92
1	FID	ACIS-S-4	7.20	1260	0.047	0.021	0.007	0.011	0.000000	0.000000	2154.87	176.08
2	FID	ACIS-S-5	7.23	1260	-0.066	0.011	0.006	0.010	0.000000	0.000000	-1810.67	170.98
3	GUIDE	505414952	9.98	2517	-0.084	-0.041	0.138	0.227	203.527988	58.651569	1021.03	1978.31
4	GUIDE	505419952	10.12	2519	0.116	-0.023	0.131	0.204	201.880700	58.804366	-1788.03	606.10
5	GUIDE	505421936	8.86	2520	-0.097	0.051	0.075	0.117	201.854843	57.887820	85.19	-2110.21
6	GUIDE	505421968	8.18	2520	0.036	-0.009	0.087	0.141	202.022601	58.209270	-326.24	-983.87
7	GUIDE	505422344	8.62	2519	0.015	0.022	0.068	0.119	202.767077	57.846963	1588.10	-1207.39

2.4 Star Slots

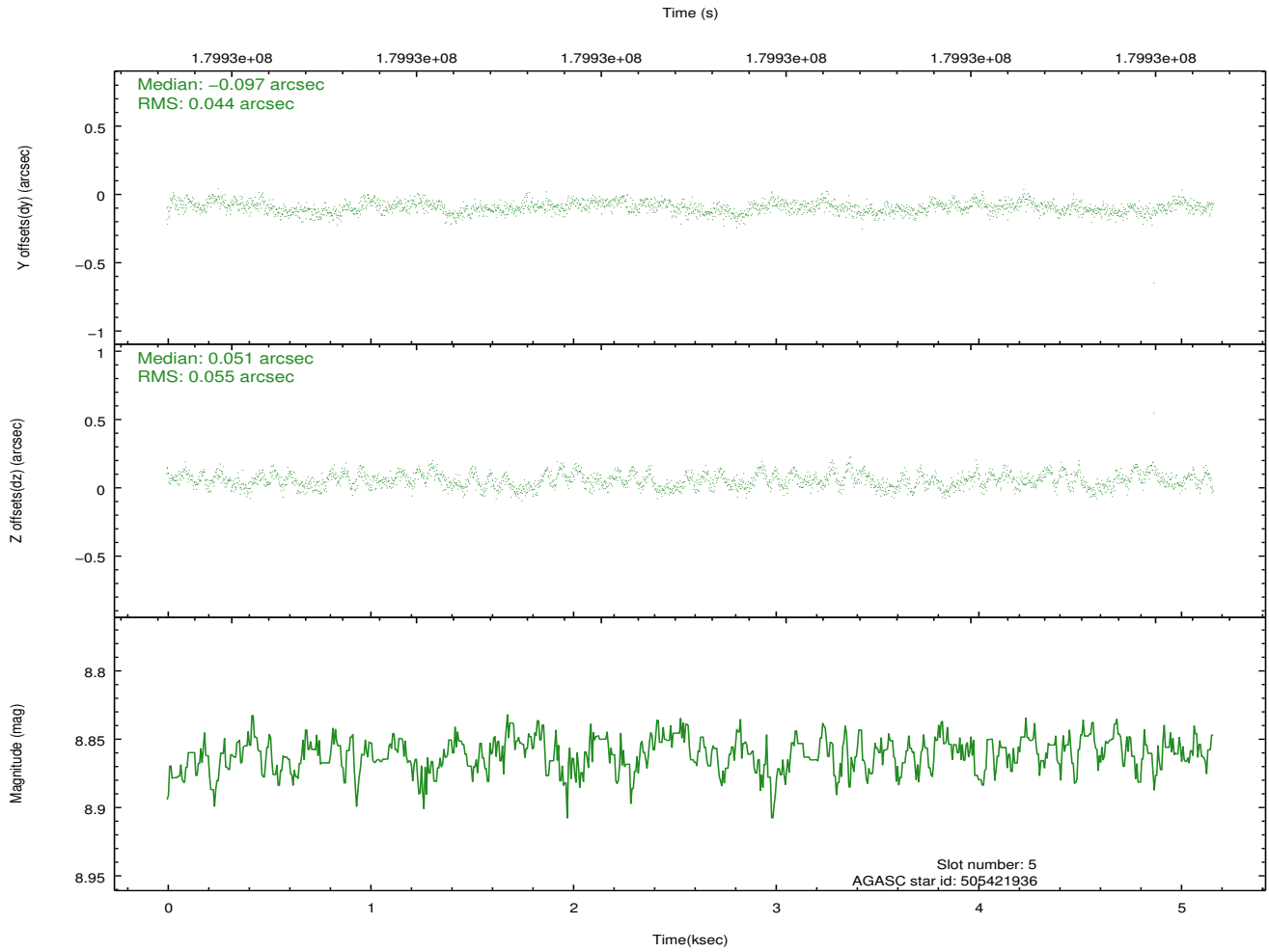
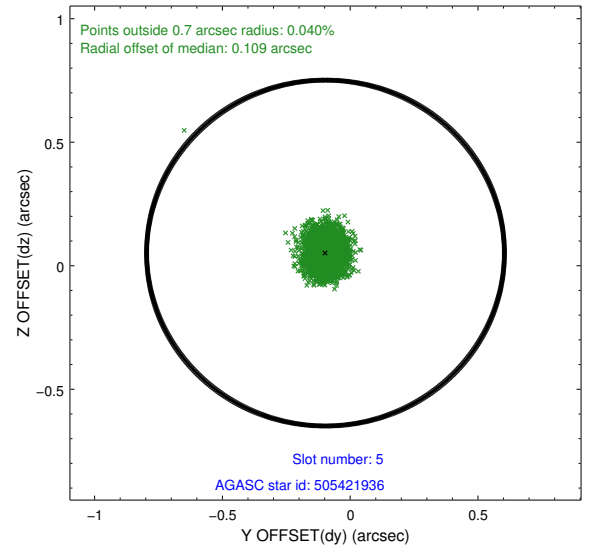
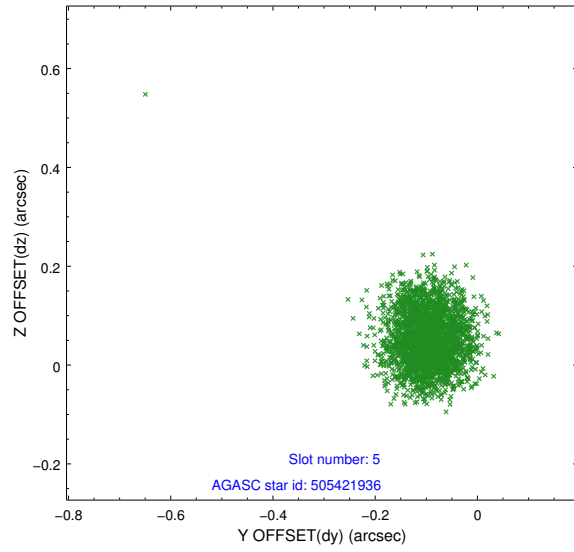
2.4.1 Slot 3



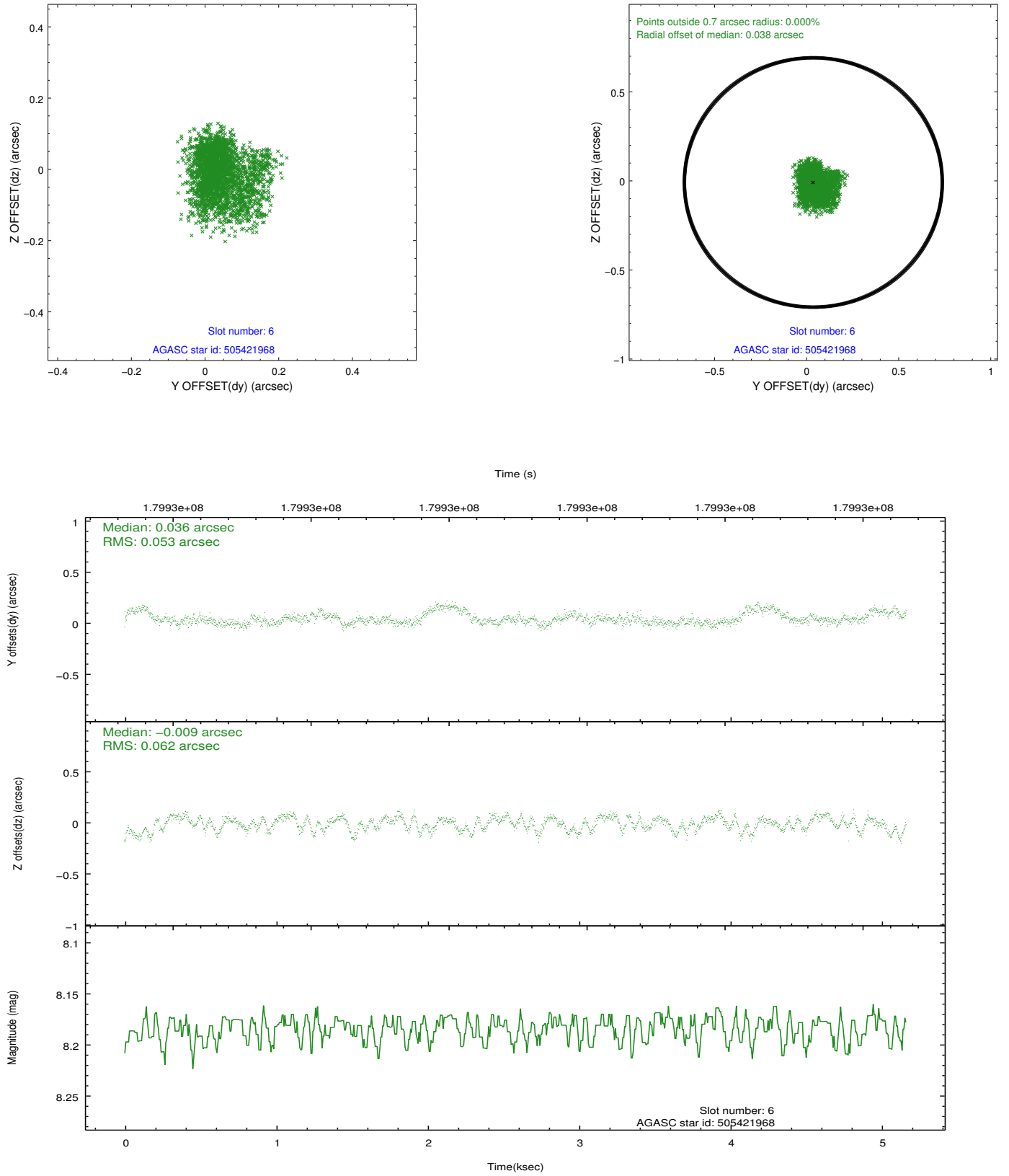
2.4.2 Slot 4



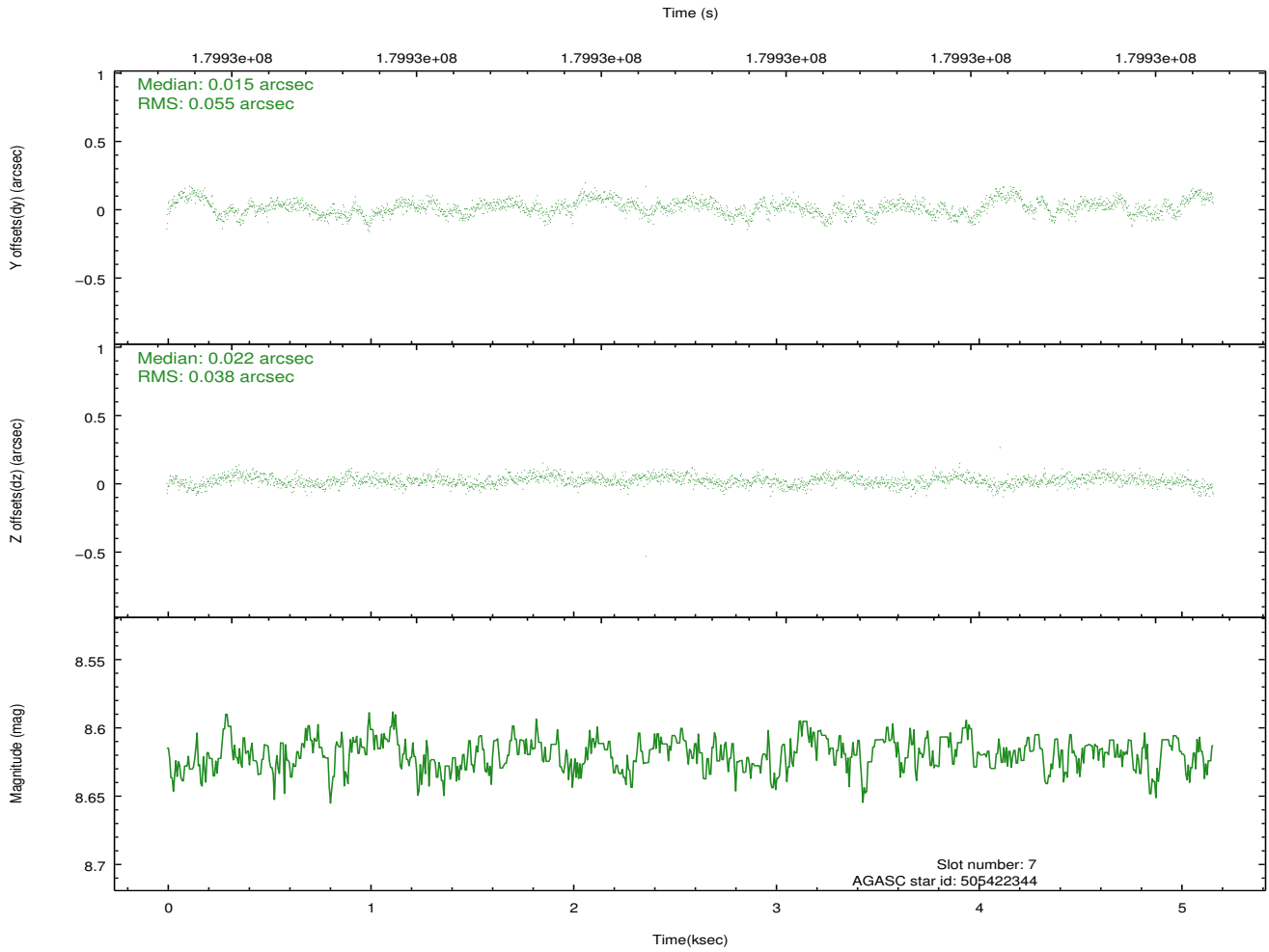
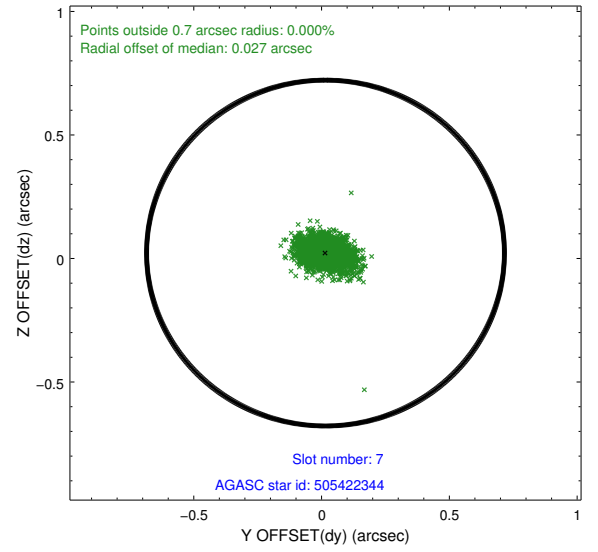
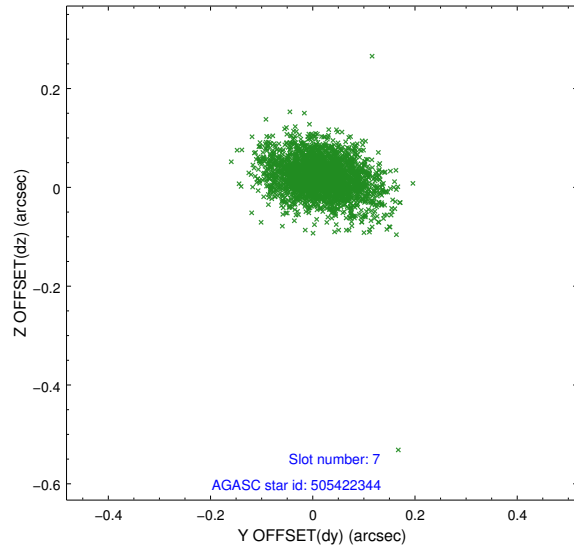
2.4.3 Slot 5



2.4.4 Slot 6

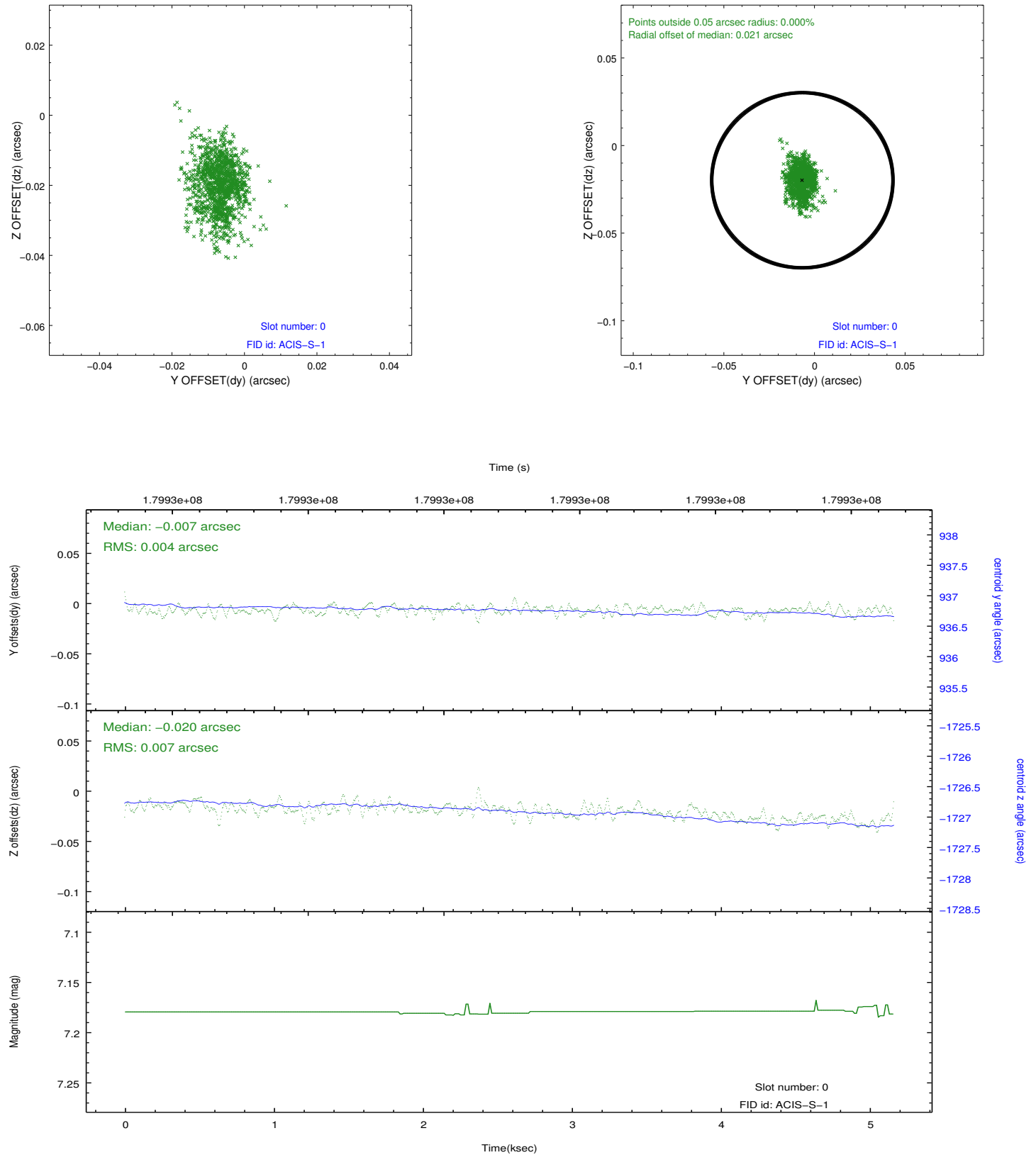


2.4.5 Slot 7

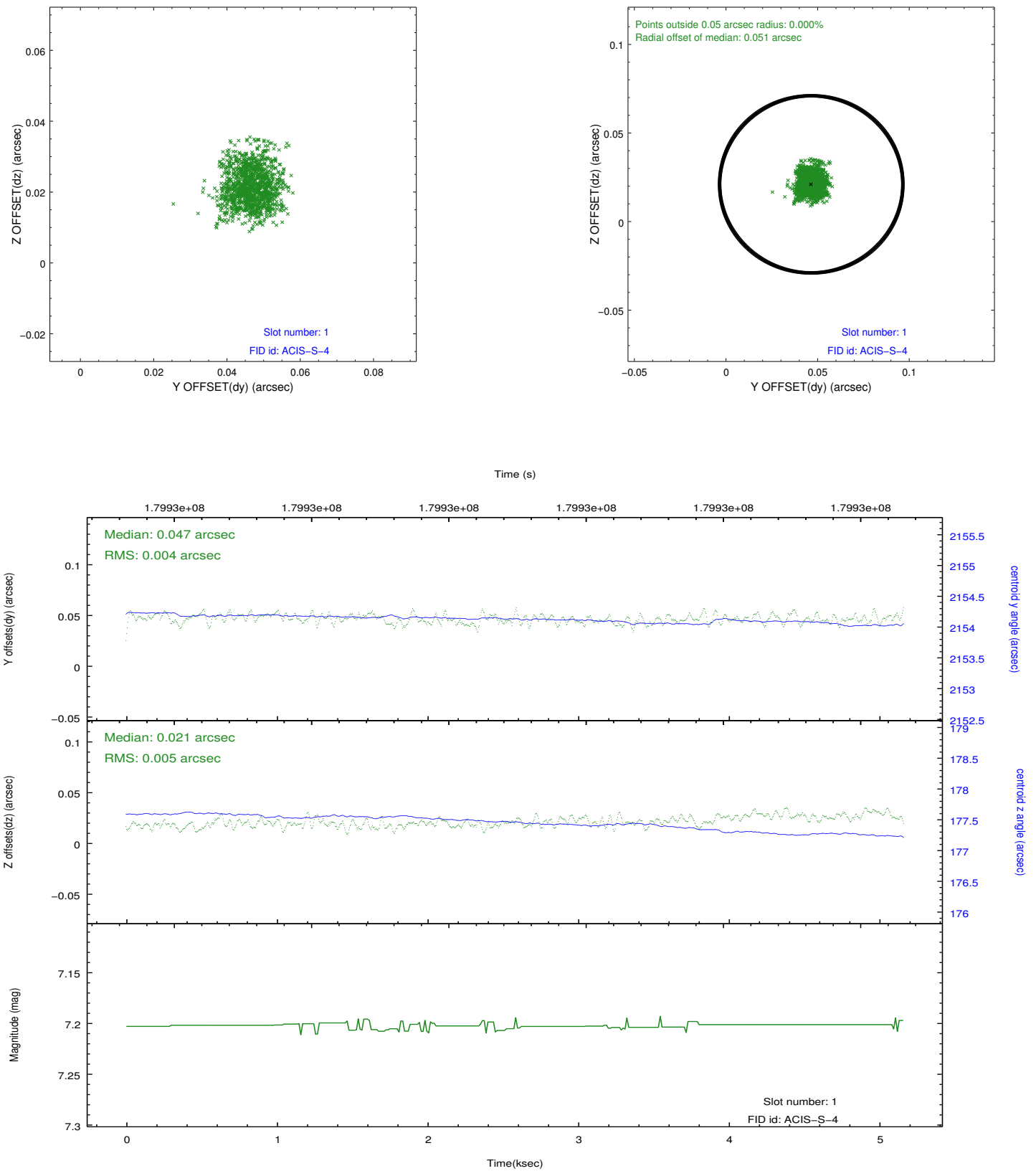


2.5 FID Slots

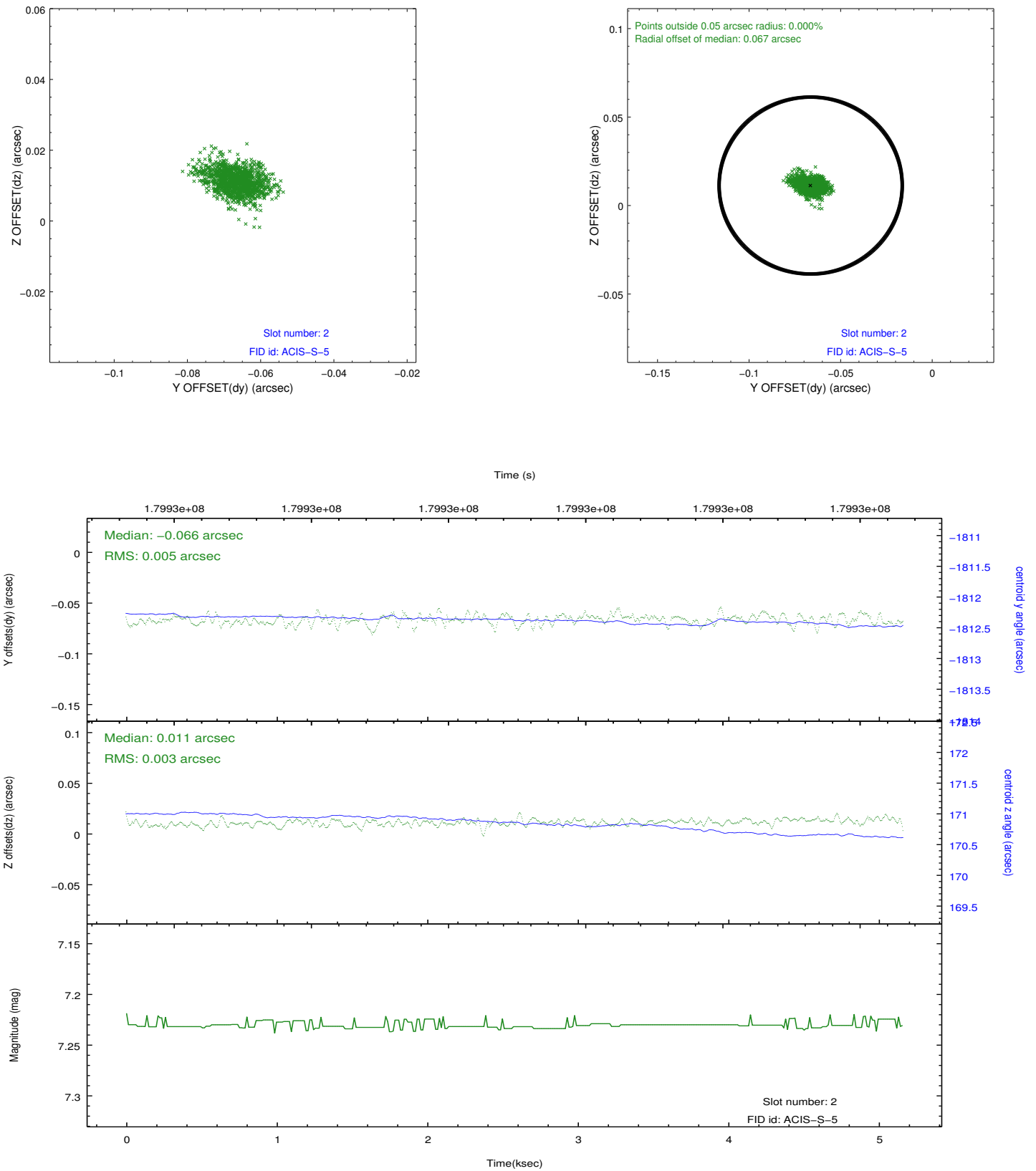
2.5.1 Slot 0



2.5.2 Slot 1



2.5.3 Slot 2



A Summary

A.1 Status

V&V Scientist	Beth Sundheim
V&V Date (YYYY-MM-DD)	2012.11.26
V&V Edition	1
V&V Disposition and Status	OK
V&V Charge Time	5.163

A.2 Comments