

# V&V Reference Report

## L2 ASCDS Version : 8.4.5

Observation 3553 - L2 Version 3  
Chandra X-Ray Center

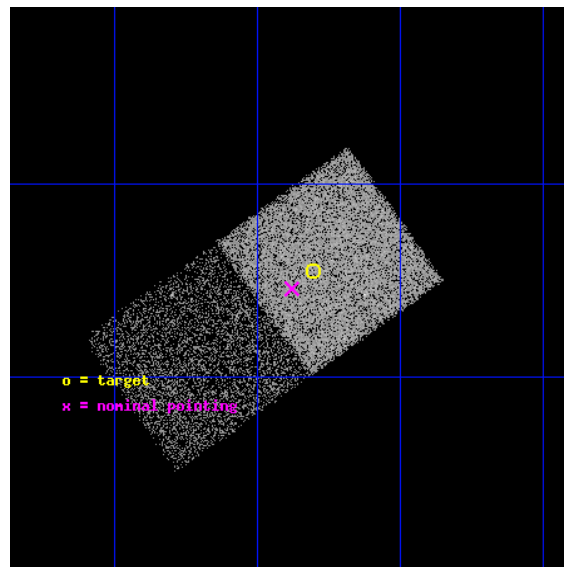
L2 Processing Date : Oct 19 2012

## Contents

<b>1</b>	<b>Front</b>	<b>2</b>
<b>2</b>	<b>OBI</b>	<b>3</b>
2.1	OBI . . . . .	3
2.1.1	Images . . . . .	3
2.1.2	Bias . . . . .	3
2.1.3	Parameters . . . . .	4
2.1.4	Events . . . . .	4
2.2	Compared Parameters . . . . .	5
2.3	Aspect . . . . .	6
2.4	Star Slots . . . . .	9
2.4.1	Slot 3 . . . . .	9
2.4.2	Slot 4 . . . . .	10
2.4.3	Slot 5 . . . . .	11
2.4.4	Slot 6 . . . . .	12
2.4.5	Slot 7 . . . . .	13
2.5	FID Slots . . . . .	14
2.5.1	Slot 0 . . . . .	14
2.5.2	Slot 1 . . . . .	15
2.5.3	Slot 2 . . . . .	16
<b>A</b>	<b>Summary</b>	<b>17</b>
A.1	Status . . . . .	17
A.2	Comments . . . . .	17

# 1 Front

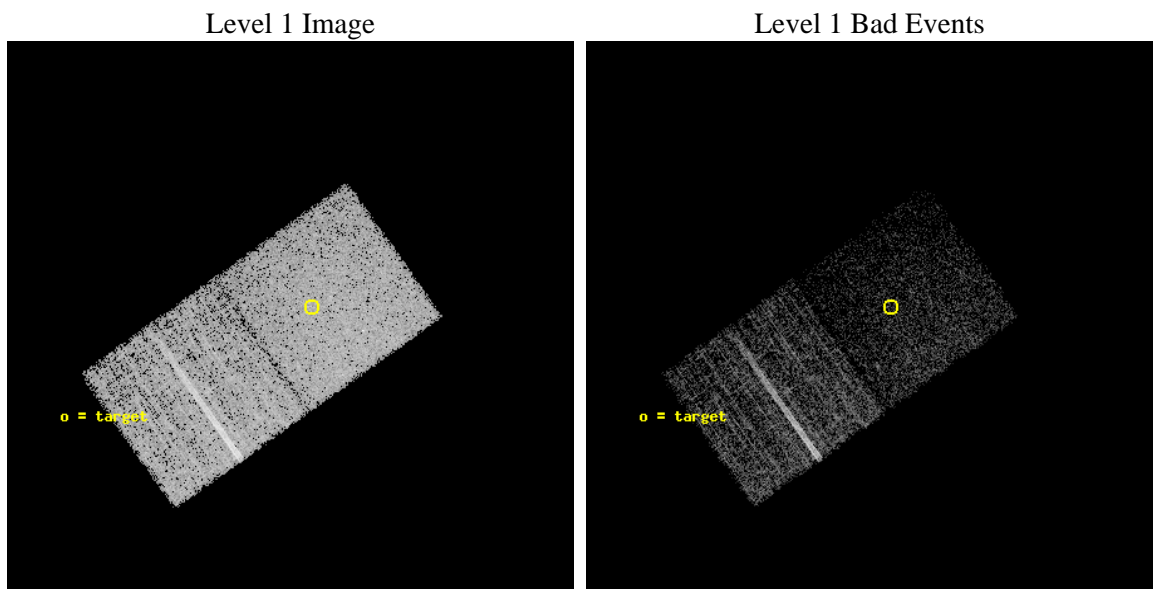
seq_num	600298	Sequence number
obs_id	3553	Observation id
title	ALTERNATE- IR EXCESS GALAXIES: YOUNG STARBURSTS OR BURIED AGN?	Pro
observer	Professor Gordon Garmire	Principal investigator
object	UGC 3097	Source name
dtcycle	0	&#160
cycle	P	events from which exps? Prim/Second/Both
ra_targ	68.95125	Observer's specified target RA [deg]
dec_targ	2.258056	Observer's specified target Dec [deg]
ra_nom	68.969820730393	Nominal RA [deg]
dec_nom	2.2427101987185	Nominal Dec [deg]
roll_nom	324.52504509185	Nominal Roll [deg]
revision	3	Processing version of data
ontime	11429.195448518	Sum of GTIs [s]
livetime	11274.954076748	Livetime [s]
ontime6	11429.154408514	Sum of GTIs [s]
ontime7	11429.195448518	Sum of GTIs [s]
l2events	35087	Number of level 2 events



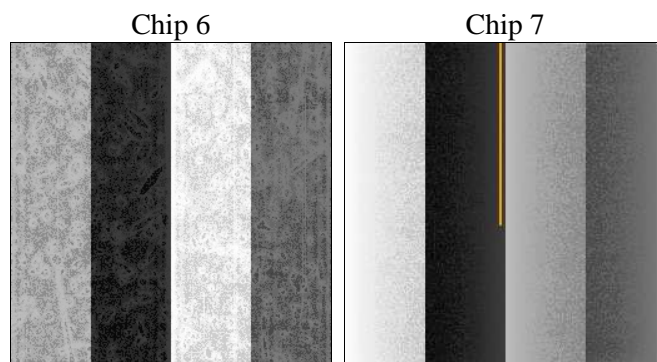
## 2 OBI

### 2.1 OBI

#### 2.1.1 Images



#### 2.1.2 Bias



### 2.1.3 Parameters

obi_num	0	Obi number	sched_exp_time	10917.000000	[s] Scheduled observation exposure time
ascdsver	8.4.5	Processing system revision	ontime	11429.195448518	Sum of GTIs [s]
caldsver	4.5.2	&#160	ontime6	11429.154408514	Sum of GTIs [s]
date	2012-10-19T05:50:19	Date and time of file creation	ontime7	11429.195448518	Sum of GTIs [s]
revision	3	Processing version of data	l1events	112722	Number of level 1 events

### 2.1.4 Events

	<b>ccd 6</b>	<b>ccd 7</b>
level 1 events	57821	54901
rejected events	50640	25267
rejected %	87%	46%

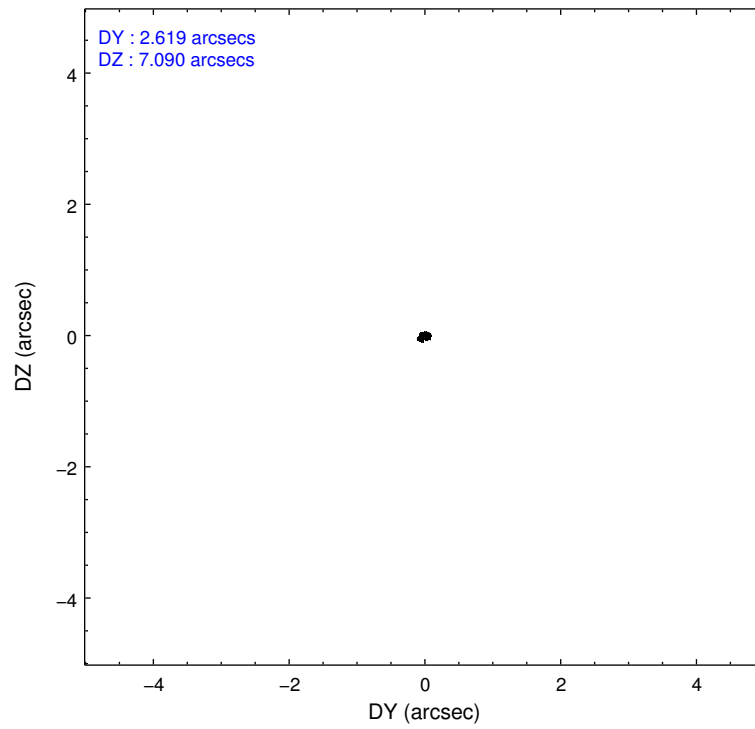
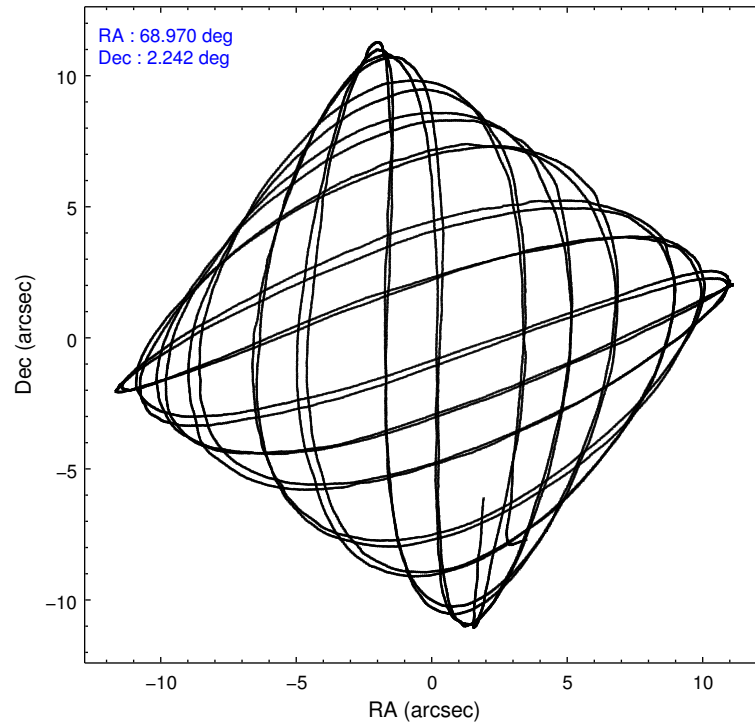
	<b>ccd 6</b>	<b>ccd 7</b>
grade 0 events	3145	3007
	5%	5%
grade 1 events	21	53
	0%	0%
grade 2 events	1354	6062
	2%	11%
grade 3 events	722	2909
	1%	5%
grade 4 events	710	2925
	1%	5%
grade 5 events	1821	5413
	3%	9%
grade 6 events	1255	14744
	2%	26%
grade 7 events	48793	19788
	84%	36%

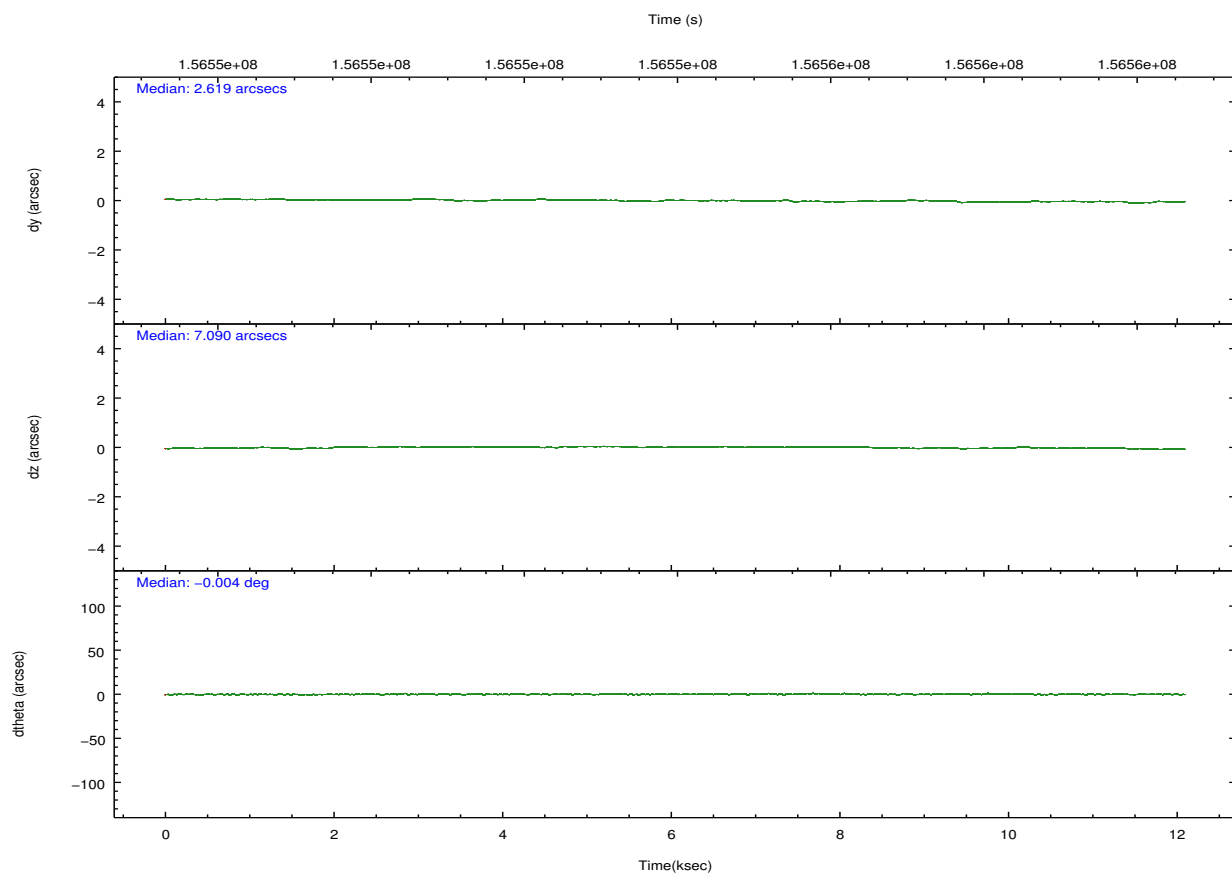
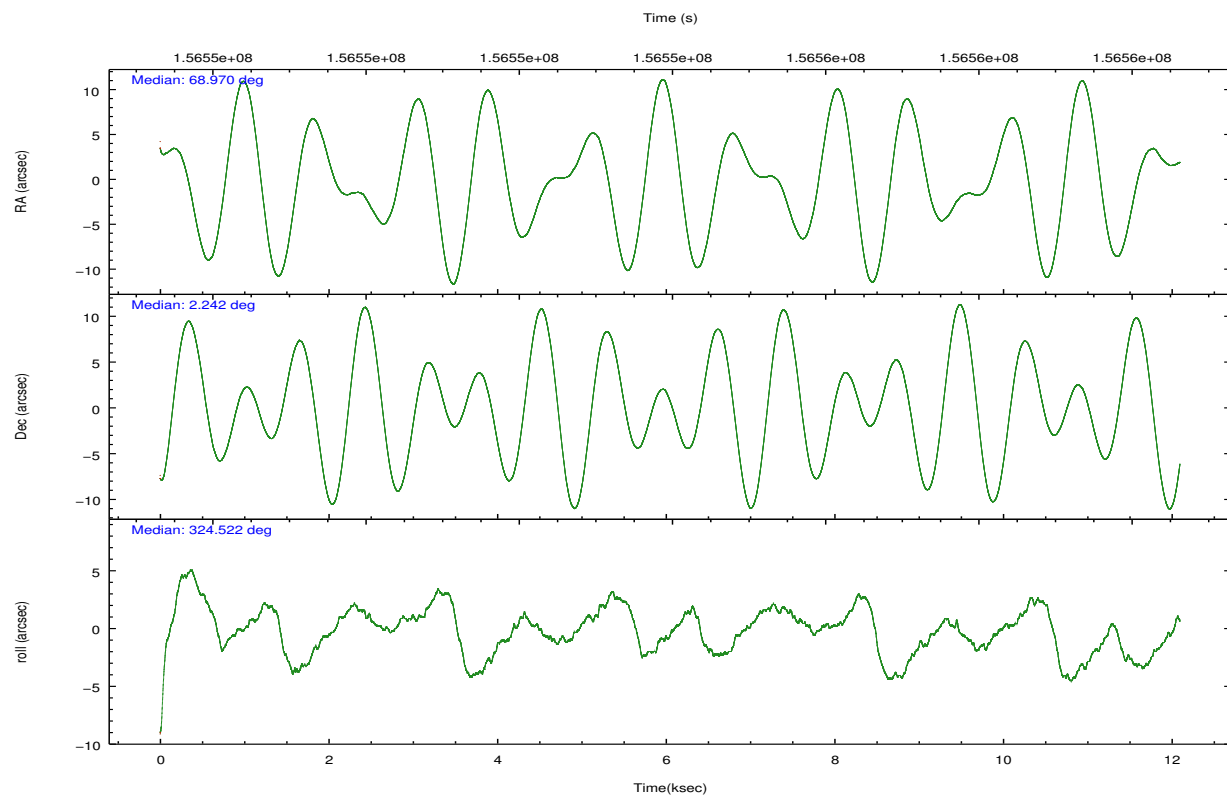


## 2.2 Compared Parameters

Parameter	Planned	Actual	Parameter	Planned	Actual
Instrument	ACIS	ACIS	Obspar format version number	7	7
Detector	ACIS-67	ACIS-67	Obspar file type	PREDICTED	ACTUAL
Grating	NONE	NONE	Obspar update status	NONE	UPDATED
Data mode	VFAINT	VFAINT	Number of optional ACIS chips dropped	0	0
Observation mode	POINTING	POINTING	On-chip summing requested	N	N
[deg] Pointing RA	68.942658	68.9698207303931	Subarray requested	NONE	NONE
[deg] Pointing Dec	2.244936	2.24271019871853	Alternating exposures requested	N	N
[deg] Pointing Roll	324.369480	324.5250450918531	[s] Primary exposure time	0.000000	3
[mm] SIM focus pos	-0.684267	-0.6828225247311905			
[mm] SIM defocus	0	0.001444936568705701			
[mm] SIM translation stage pos	-190.132523	-190.1400660498719			
[mm] SIM translation stage offset	0	0.00754346686406393			
[s] Observation start time (MET)	156549095.184000	156547639.72887			
Observation start date	2002-12-17T21:50:31	2002-12-17T21:27:19			
[s] Observation end time (MET)	156560012.184000	156560374.3294			
Observation end date	2002-12-18T00:52:28	2002-12-18T00:59:34			
Read mode	TIMED	TIMED			

## 2.3 Aspect



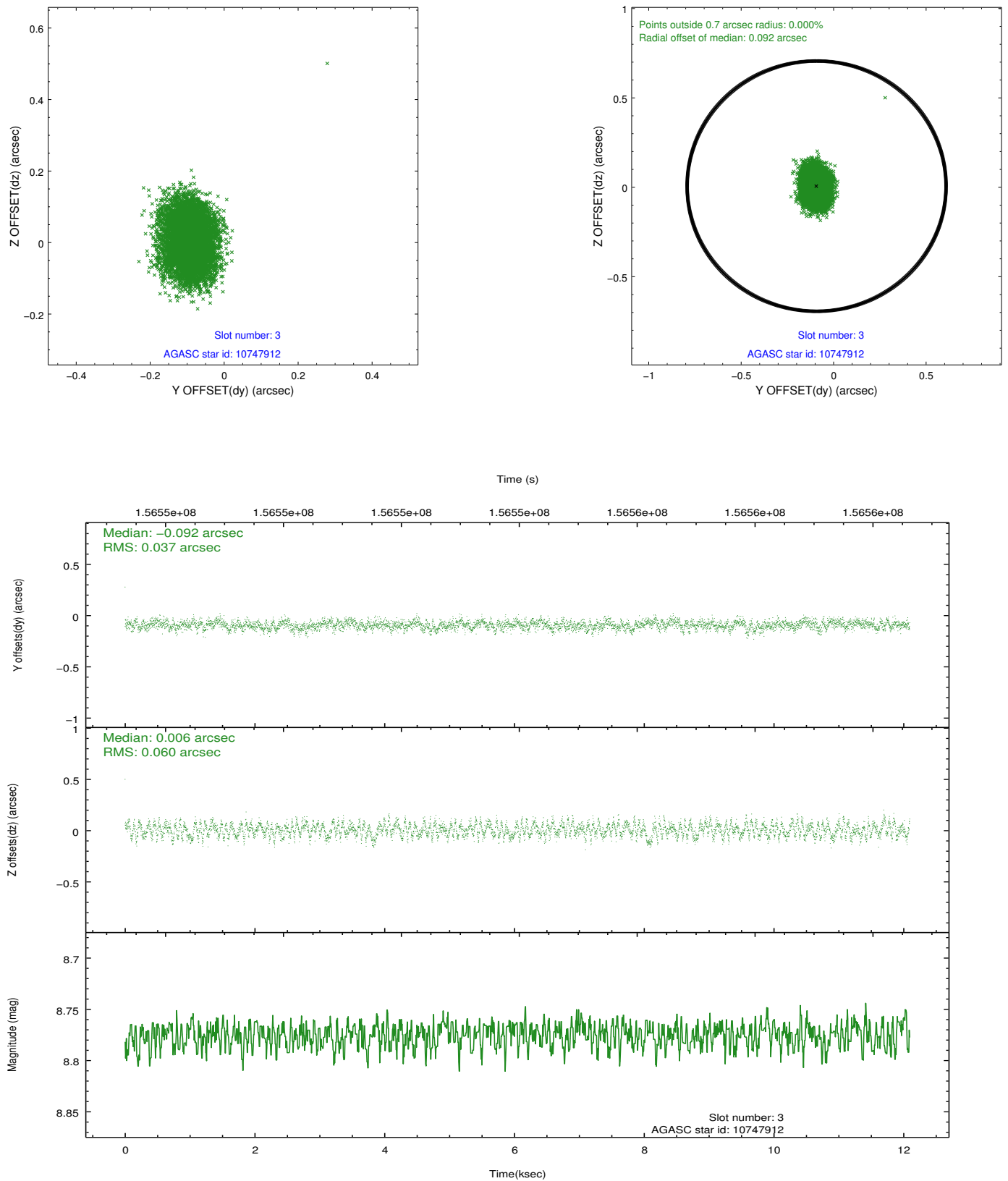


### Slot Statistics

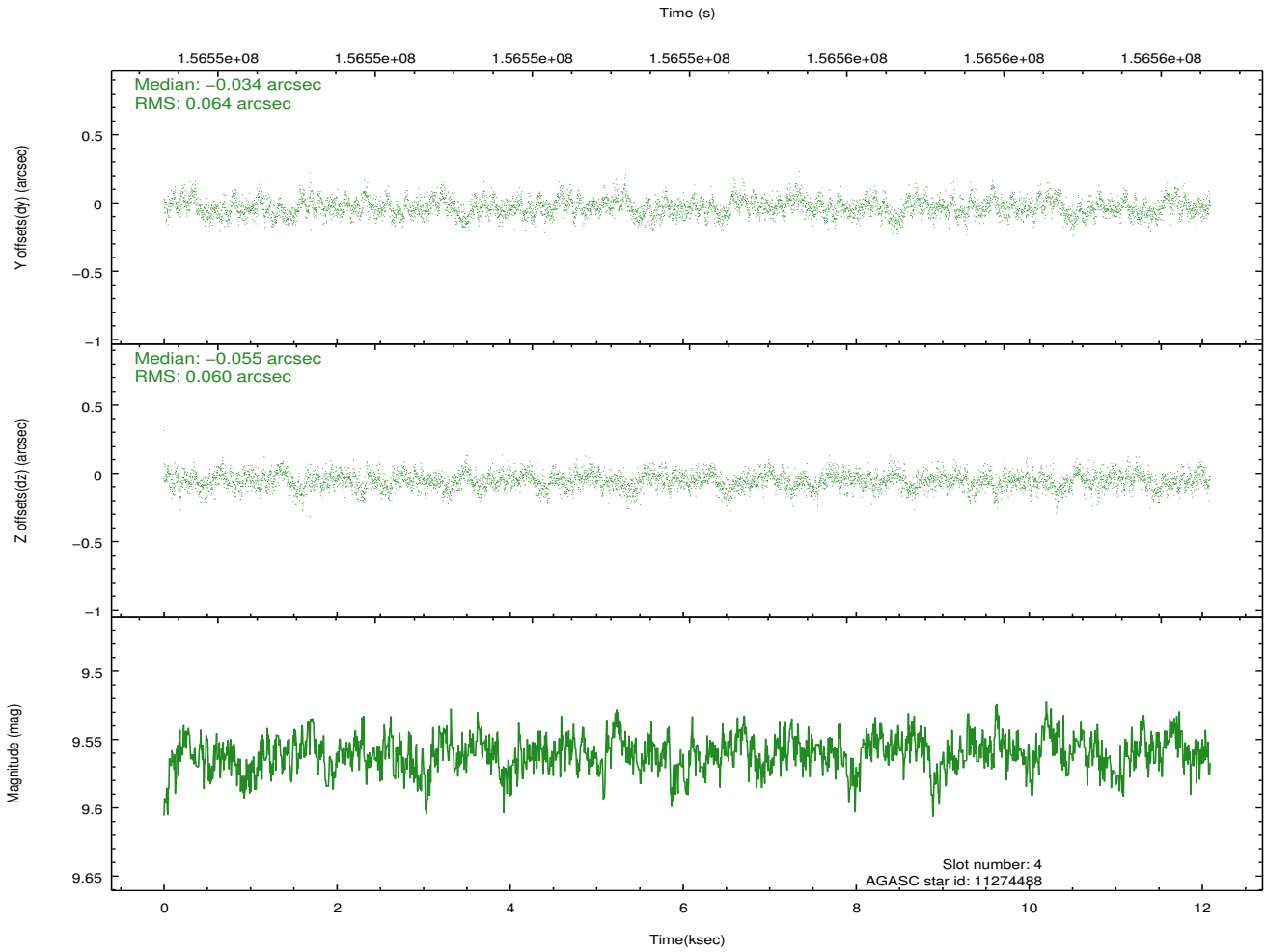
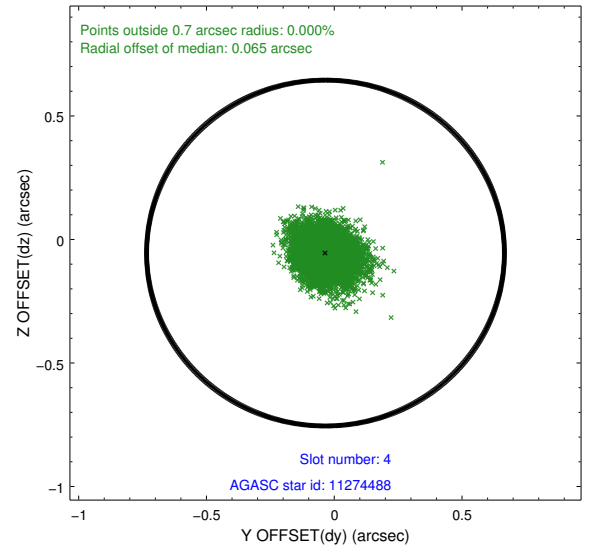
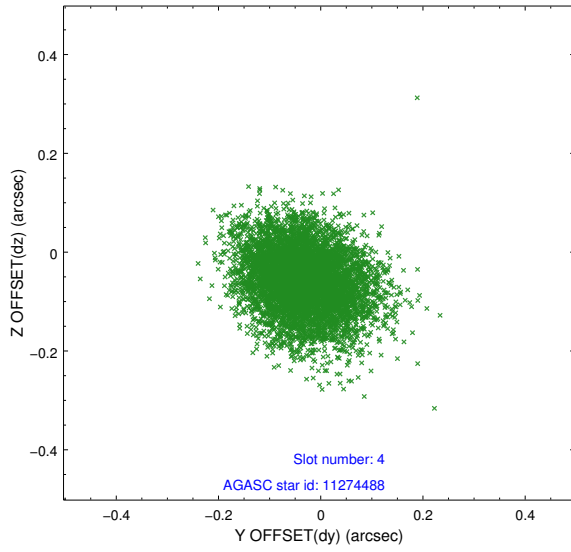
slot	status	id	mag	n_pts	med_dy	med_dz	dr1	dr2	ra	dec	mean_y	mean_z
0	FID	ACIS-S-2	7.11	2951	-0.022	0.005	0.006	0.010	0.000000	0.000000	-755.26	-1728.25
1	FID	ACIS-S-4	7.20	2951	-0.011	0.009	0.005	0.010	0.000000	0.000000	2157.83	179.82
2	FID	ACIS-S-5	7.24	2951	0.001	-0.005	0.007	0.011	0.000000	0.000000	-1807.56	173.94
3	GUIDE	10747912	8.78	5898	-0.092	0.006	0.075	0.118	68.447021	1.810277	-538.86	-2309.82
4	GUIDE	11274488	9.56	5897	-0.034	-0.055	0.094	0.153	68.579852	2.743858	-2107.70	700.21
5	GUIDE	11276264	9.96	5717	0.026	-0.046	0.120	0.188	69.020449	2.798762	-935.50	1784.48
6	GUIDE	11406392	9.14	5899	0.032	0.034	0.080	0.129	69.702137	2.434322	1821.92	2147.24
7	GUIDE	11409128	9.30	5893	0.068	0.062	0.109	0.174	69.634772	2.072329	2385.17	947.30

## 2.4 Star Slots

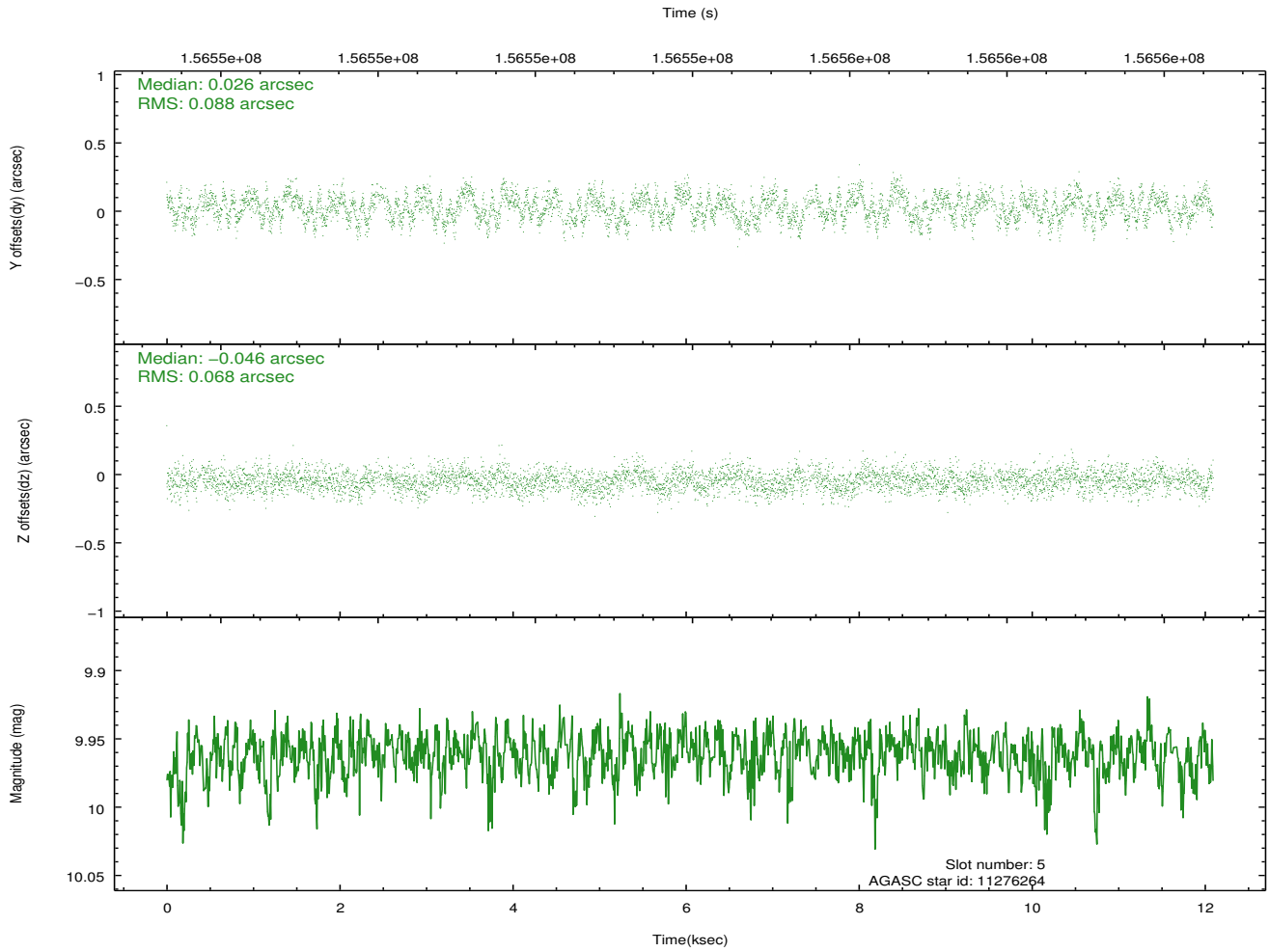
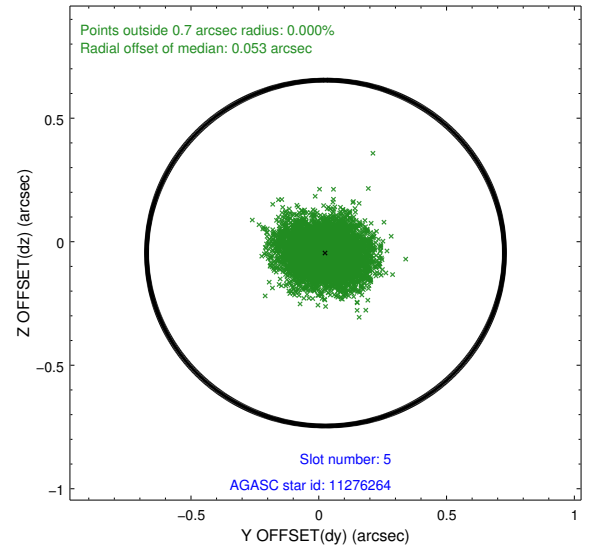
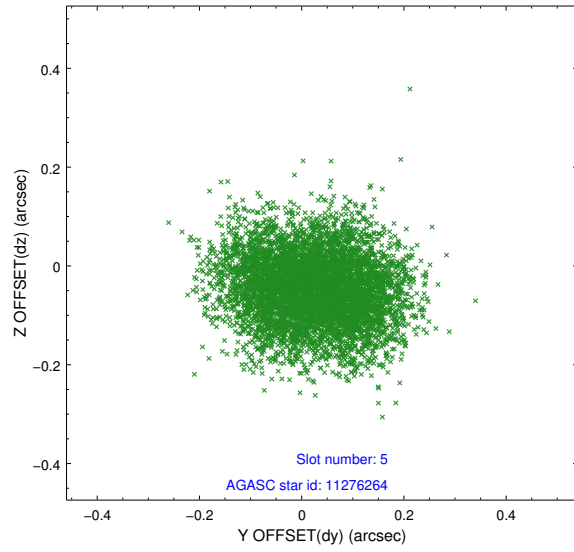
### 2.4.1 Slot 3



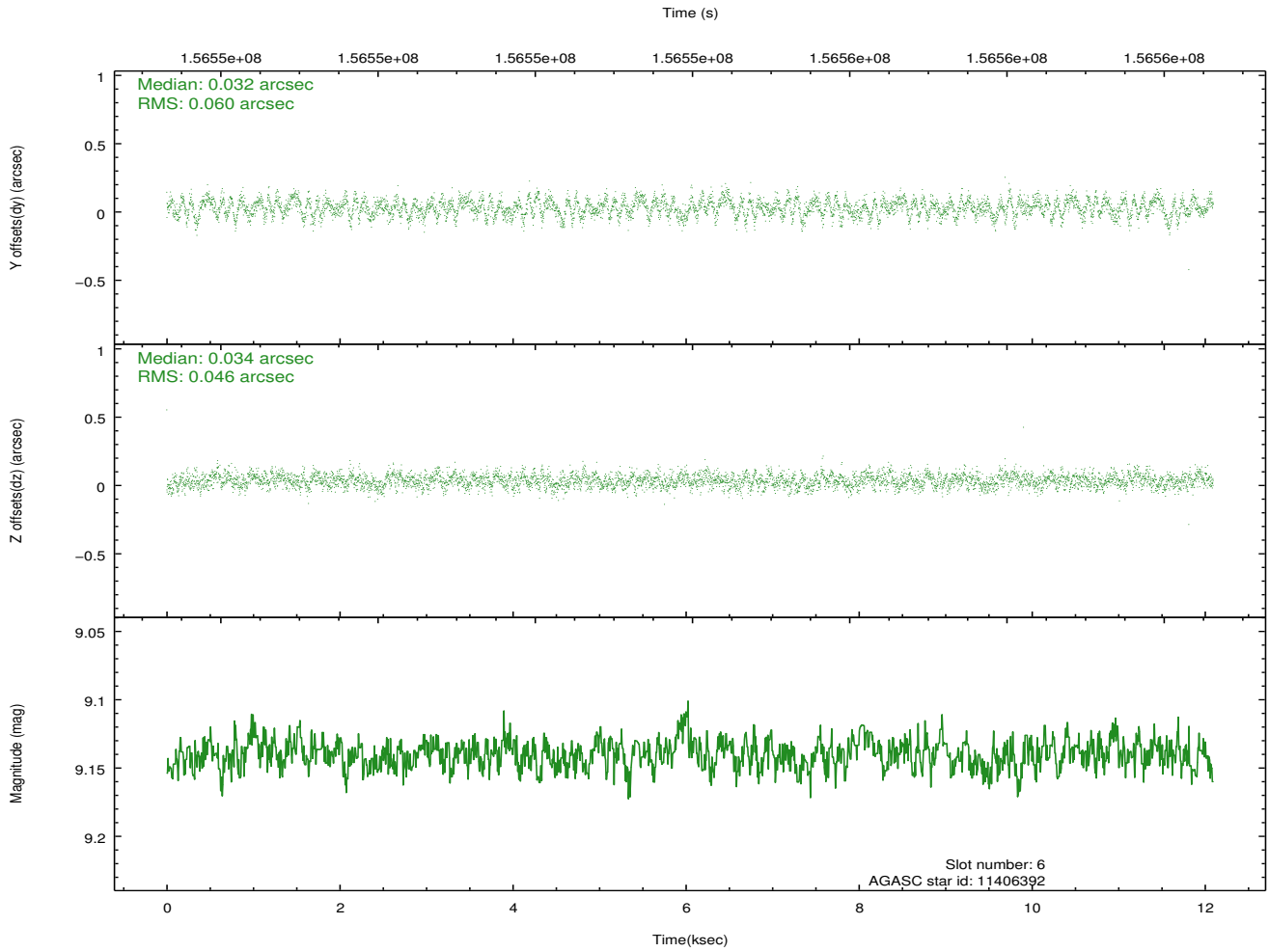
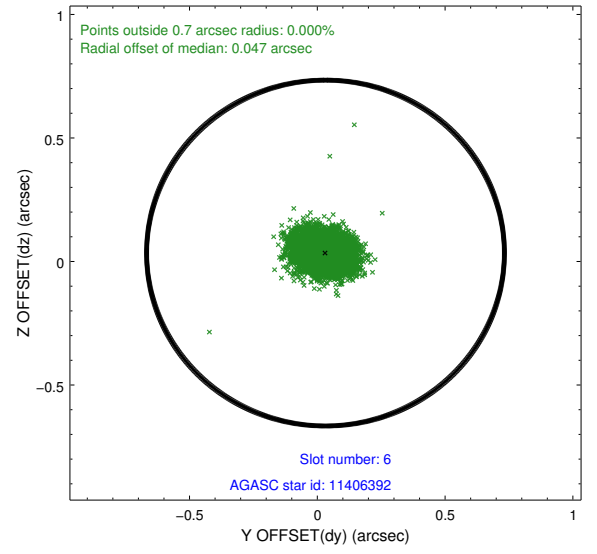
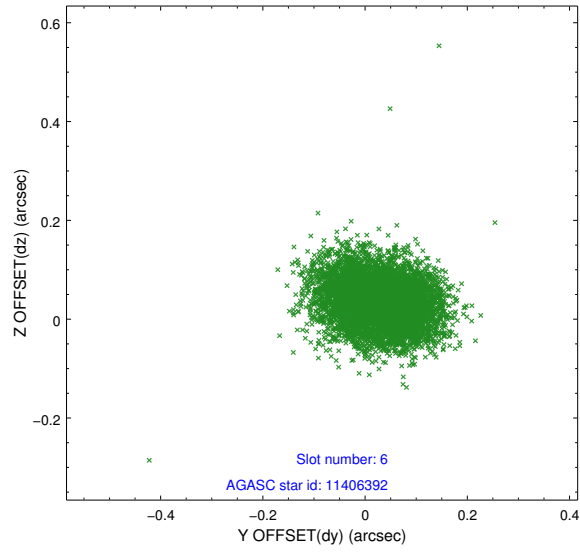
## 2.4.2 Slot 4



### 2.4.3 Slot 5

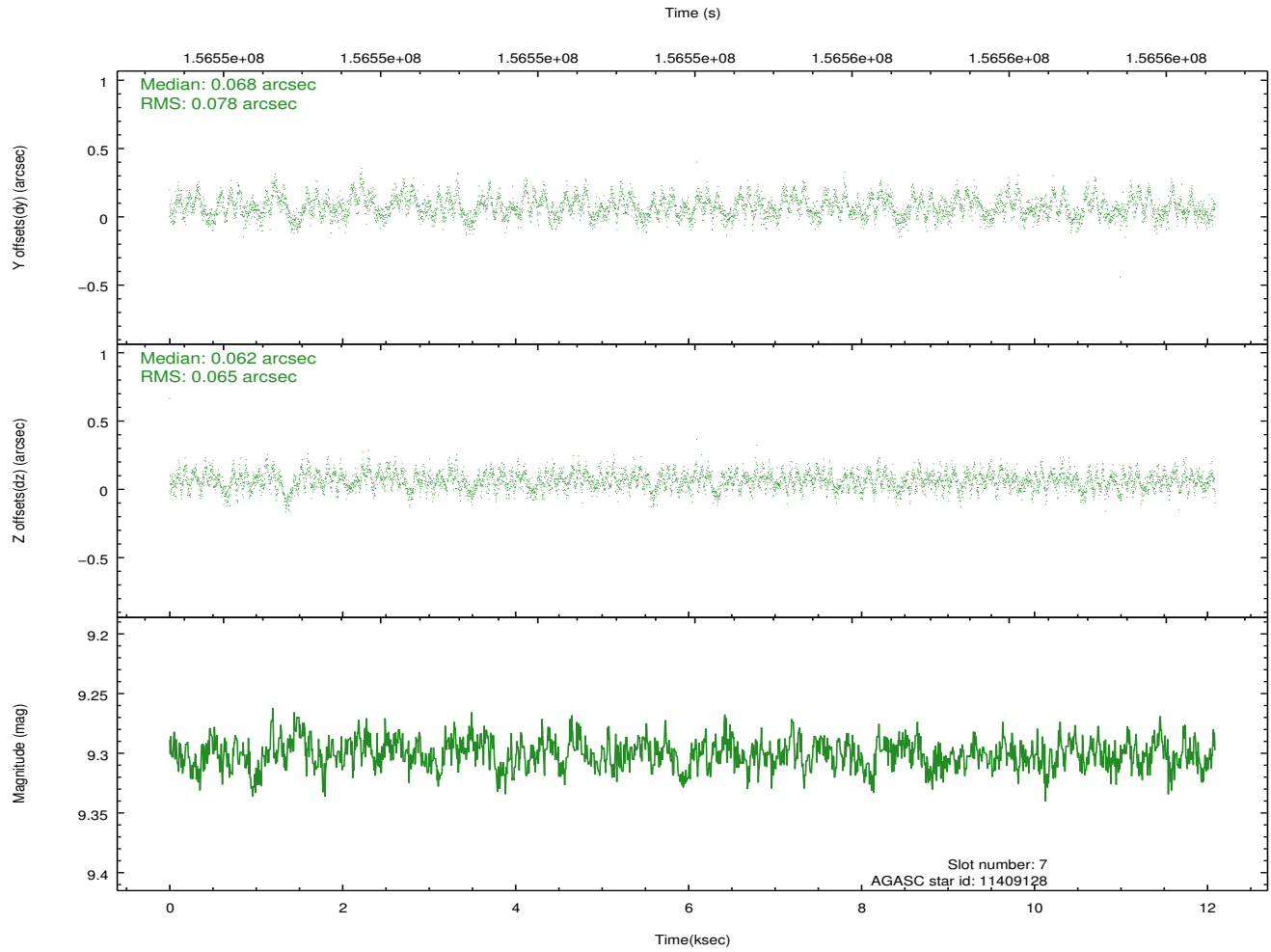
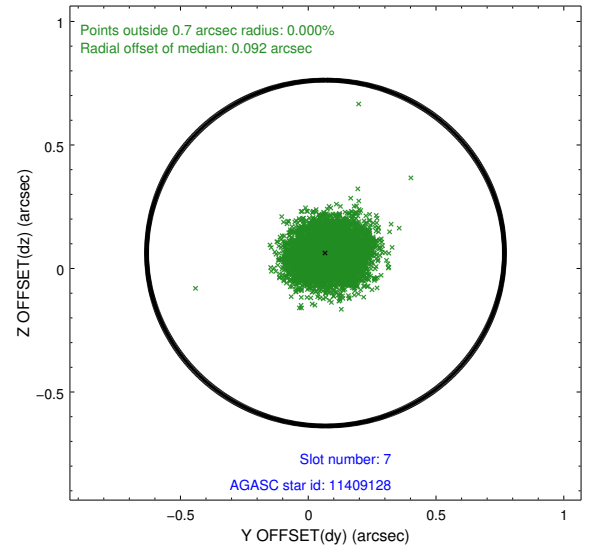
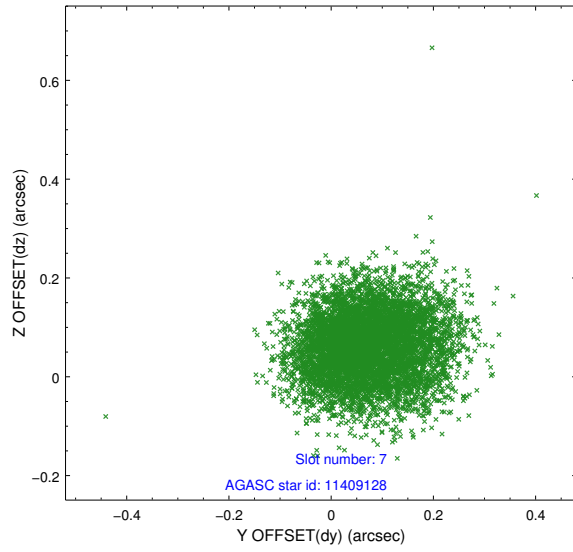


## 2.4.4 Slot 6



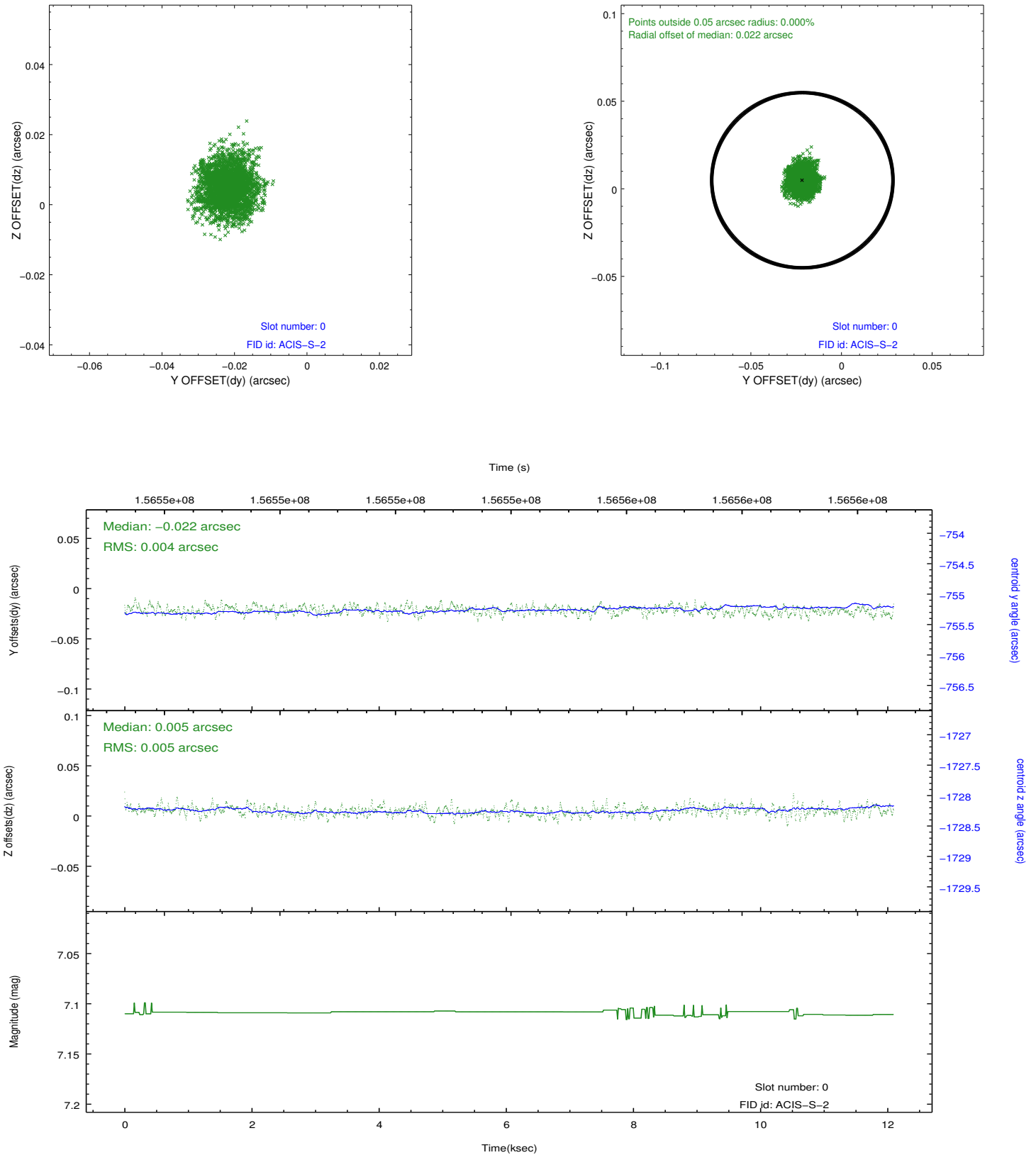


## 2.4.5 Slot 7

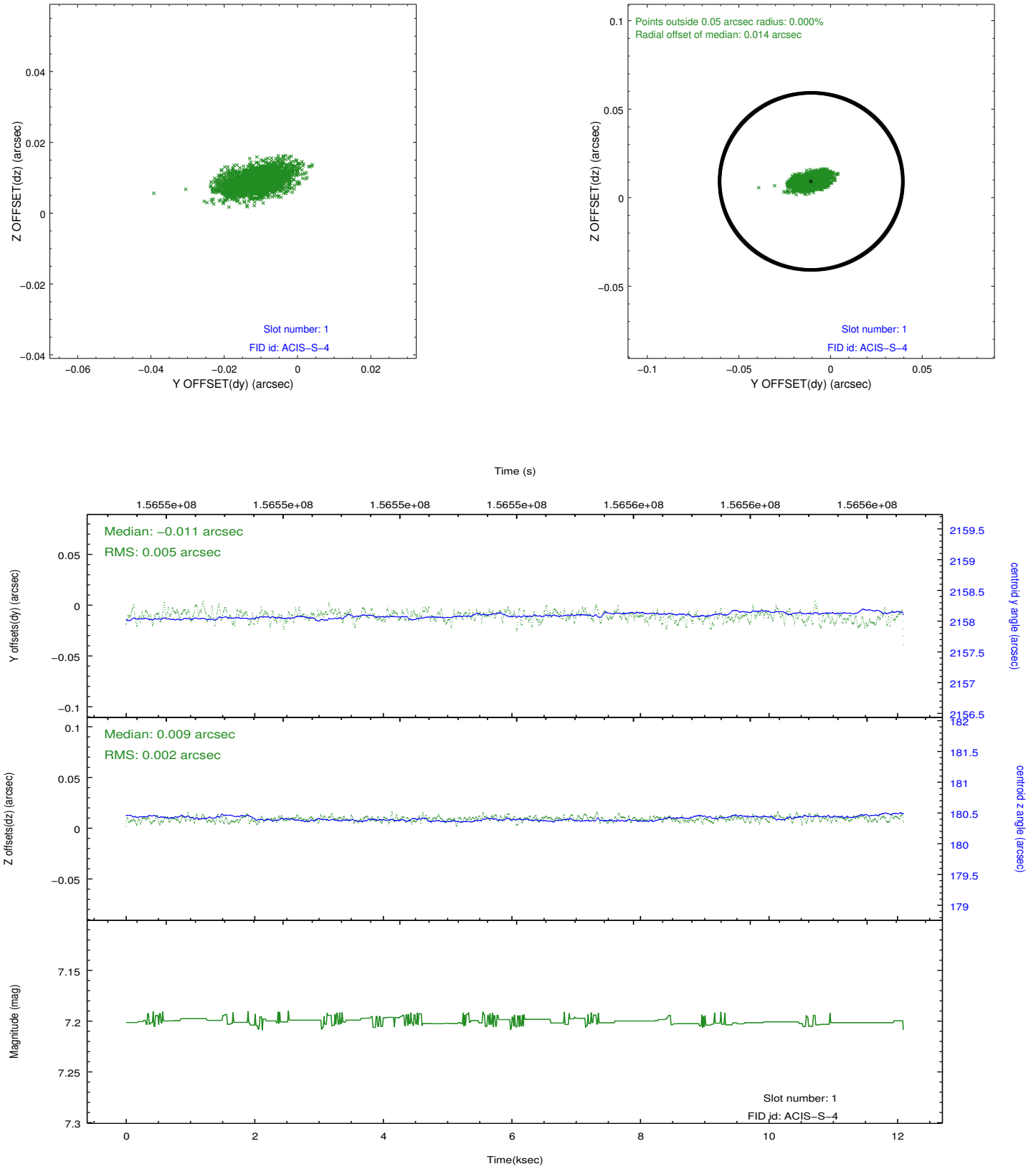


## 2.5 FID Slots

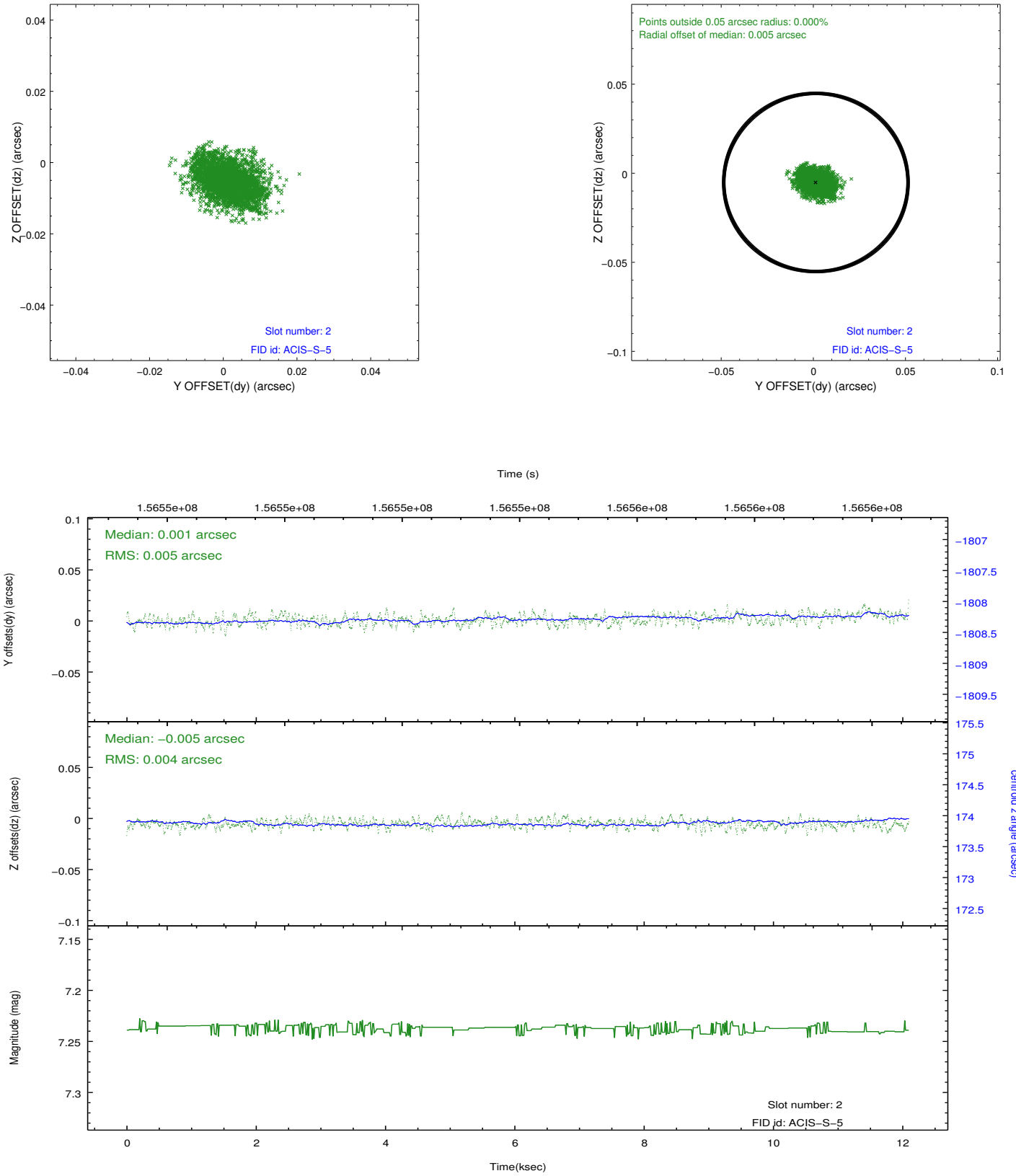
### 2.5.1 Slot 0



## 2.5.2 Slot 1



### 2.5.3 Slot 2



## A Summary

### A.1 Status

V&V Scientist	Jen Lauer
V&V Date (YYYY-MM-DD)	2012.10.31
V&V Edition	1
V&V Disposition and Status	OK
V&V Charge Time	11.43

### A.2 Comments