

# V&V Reference Report

## L2 ASCDS Version : 8.4.5

Observation 3551 - L2 Version 3  
Chandra X-Ray Center

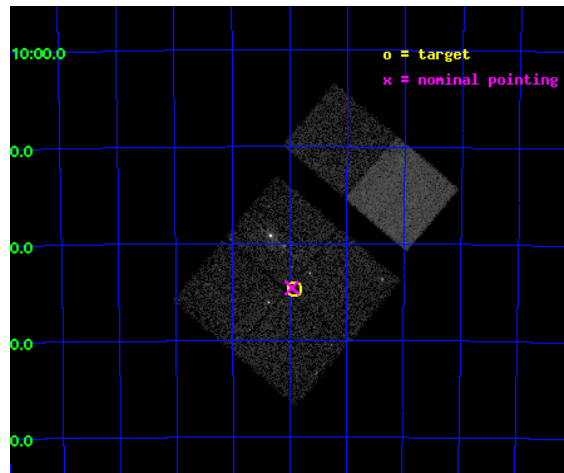
L2 Processing Date : Nov 4 2012

## Contents

<b>1</b>	<b>Front</b>	<b>2</b>
<b>2</b>	<b>OBI</b>	<b>3</b>
2.1	OBI . . . . .	3
2.1.1	Images . . . . .	3
2.1.2	Bias . . . . .	3
2.1.3	Parameters . . . . .	4
2.1.4	Events . . . . .	4
2.2	Compared Parameters . . . . .	5
2.3	Aspect . . . . .	6
2.4	Star Slots . . . . .	9
2.4.1	Slot 3 . . . . .	9
2.4.2	Slot 4 . . . . .	10
2.4.3	Slot 5 . . . . .	11
2.4.4	Slot 6 . . . . .	12
2.5	FID Slots . . . . .	13
2.5.1	Slot 0 . . . . .	13
2.5.2	Slot 1 . . . . .	14
2.5.3	Slot 2 . . . . .	15
<b>A</b>	<b>Summary</b>	<b>16</b>
A.1	Status . . . . .	16
A.2	Comments . . . . .	16

# 1 Front

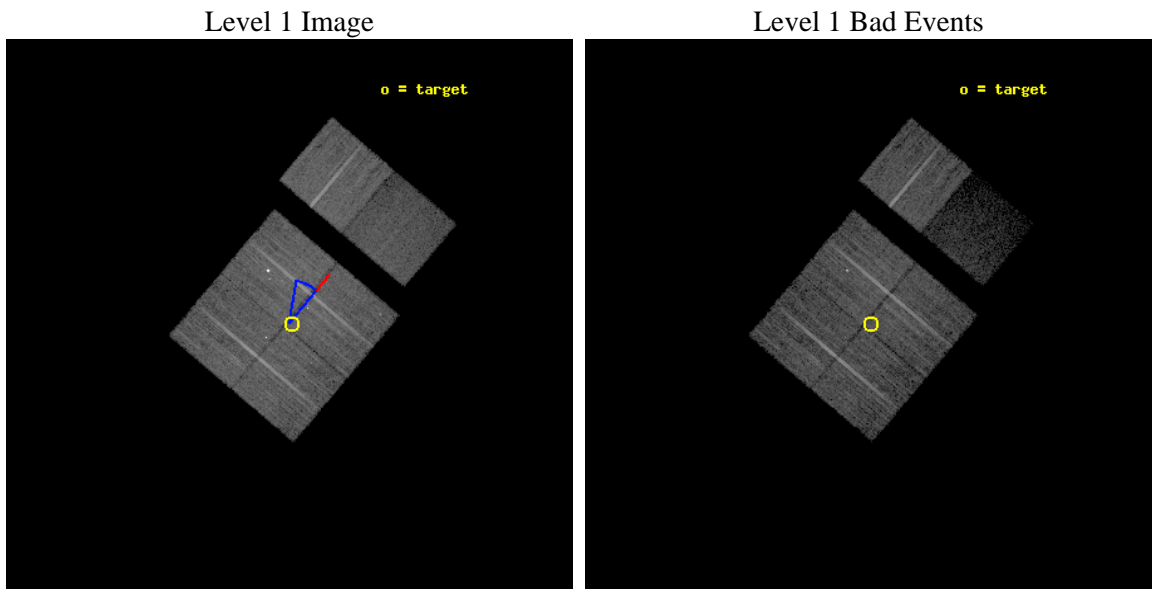
seq_num	600296	Sequence number
obs_id	3551	Observation id
title	X-RAY SOURCES IN THE NEARBY BARRED SPIRAL GALAXY NGC 1313	Proposal
observer	Professor Gordon Garmire	Principal investigator
object	NGC 1313	Source name
dtcycle	0	&#160
cycle	P	events from which exps? Prim/Second/Both
ra_targ	49.479167	Observer's specified target RA [deg]
dec_targ	-66.577778	Observer's specified target Dec [deg]
ra_nom	49.490329220021	Nominal RA [deg]
dec_nom	-66.576394469856	Nominal Dec [deg]
roll_nom	40.21893445423	Nominal Roll [deg]
revision	3	Processing version of data
ontime	15017.599944055	Sum of GTIs [s]
livetime	14827.43805105	Livetime [s]
ontime0	15017.599944055	Sum of GTIs [s]
ontime1	15017.599944055	Sum of GTIs [s]
ontime2	15017.599944055	Sum of GTIs [s]
ontime3	15017.599944055	Sum of GTIs [s]
ontime6	15017.599944055	Sum of GTIs [s]
ontime7	15017.599944055	Sum of GTIs [s]
l2events	62161	Number of level 2 events



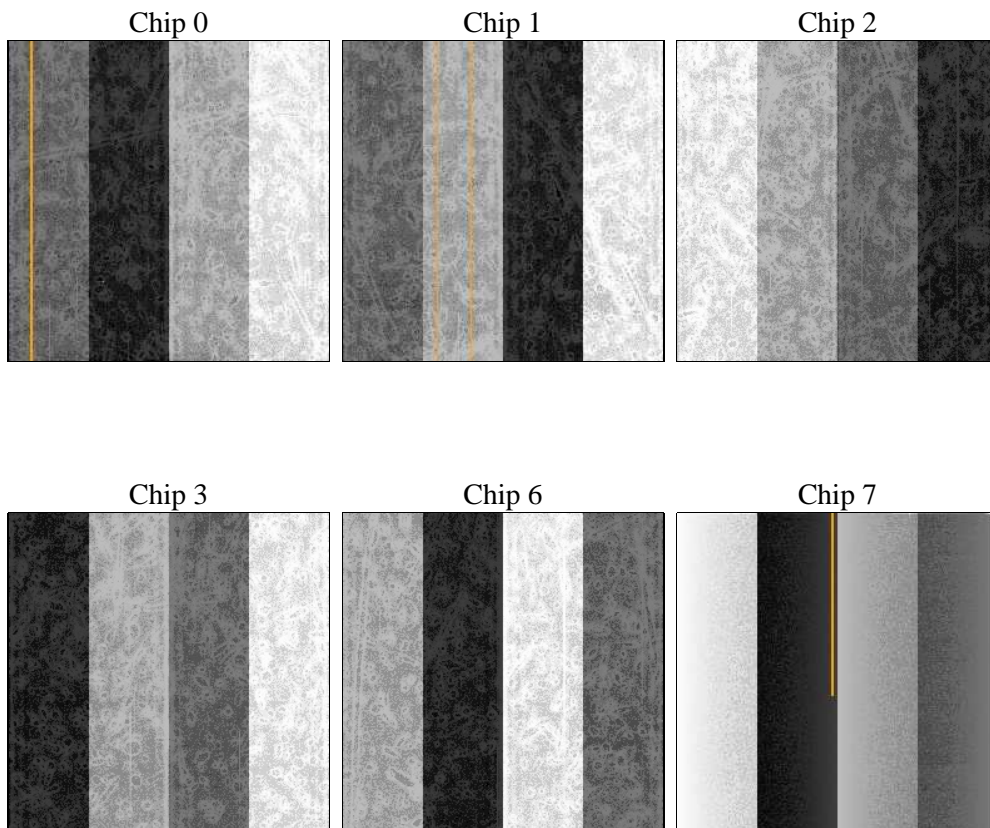
## 2 OBI

### 2.1 OBI

#### 2.1.1 Images



#### 2.1.2 Bias



### 2.1.3 Parameters

obi_num	0	Obi number	sched_exp_time	15000.000000	[s] Scheduled observation exposure time
ascdsver	8.4.5	Processing system revision	ontime	15017.599944055	Sum of GTIs [s]
caldsver	4.5.2	&#160	ontime0	15017.599944055	Sum of GTIs [s]
date	2012-11-05T02:47:34	Date and time of file creation	ontime1	15017.599944055	Sum of GTIs [s]
revision	3	Processing version of data	ontime2	15017.599944055	Sum of GTIs [s]
			ontime3	15017.599944055	Sum of GTIs [s]
			ontime6	15017.599944055	Sum of GTIs [s]
			ontime7	15017.599944055	Sum of GTIs [s]
			l1events	411349	Number of level 1 events

### 2.1.4 Events

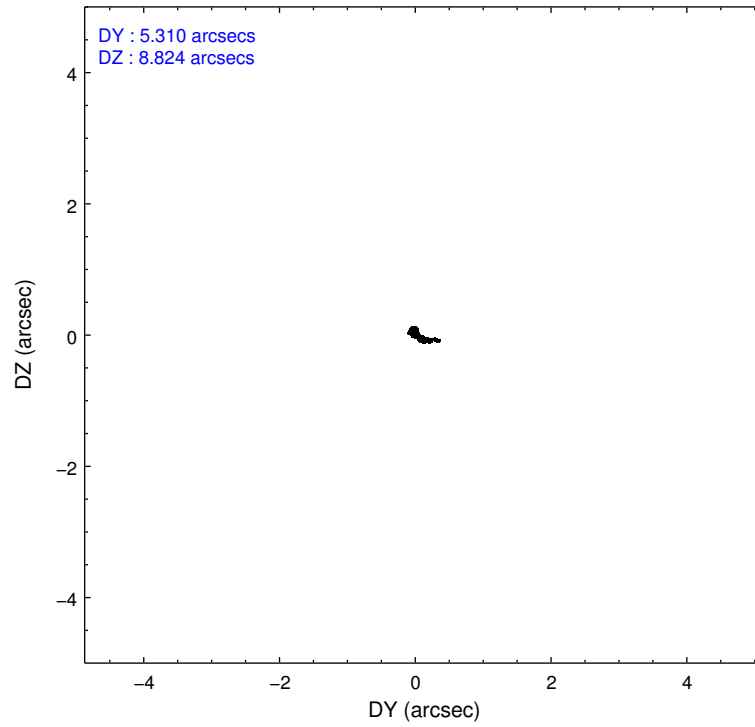
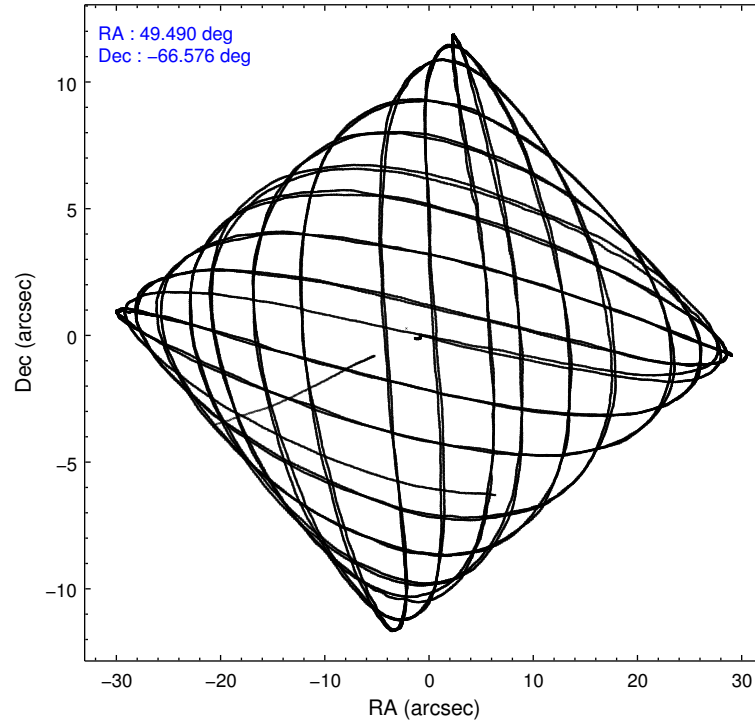
	ccd 0	ccd 1	ccd 2	ccd 3	ccd 6	ccd 7		ccd 0	ccd 1	ccd 2	ccd 3	ccd 6	ccd 7
level 1 events	68207	65825	92744	71402	72734	40437	grade 0 events	3948	2506	12002	3470	2662	2981
rejected events	60070	59366	74166	64409	66405	17279		5%	3%	12%	4%	3%	7%
rejected %	88%	90%	79%	90%	91%	42%	grade 1 events	91	27	577	77	39	57
								0%	0%	0%	0%	0%	0%
							grade 2 events	1680	1277	2973	1246	1304	5445
								2%	1%	3%	1%	1%	13%
							grade 3 events	816	822	1178	725	719	2521
								1%	1%	1%	1%	0%	6%
							grade 4 events	738	806	1213	680	718	2476
								1%	1%	1%	0%	0%	6%
							grade 5 events	1223	1369	1375	1471	1395	4267
								1%	2%	1%	2%	1%	10%
							grade 6 events	1011	1086	1327	923	969	9880
								1%	1%	1%	1%	1%	24%
							grade 7 events	58700	57932	72099	62810	64928	12810
								86%	88%	77%	87%	89%	31%

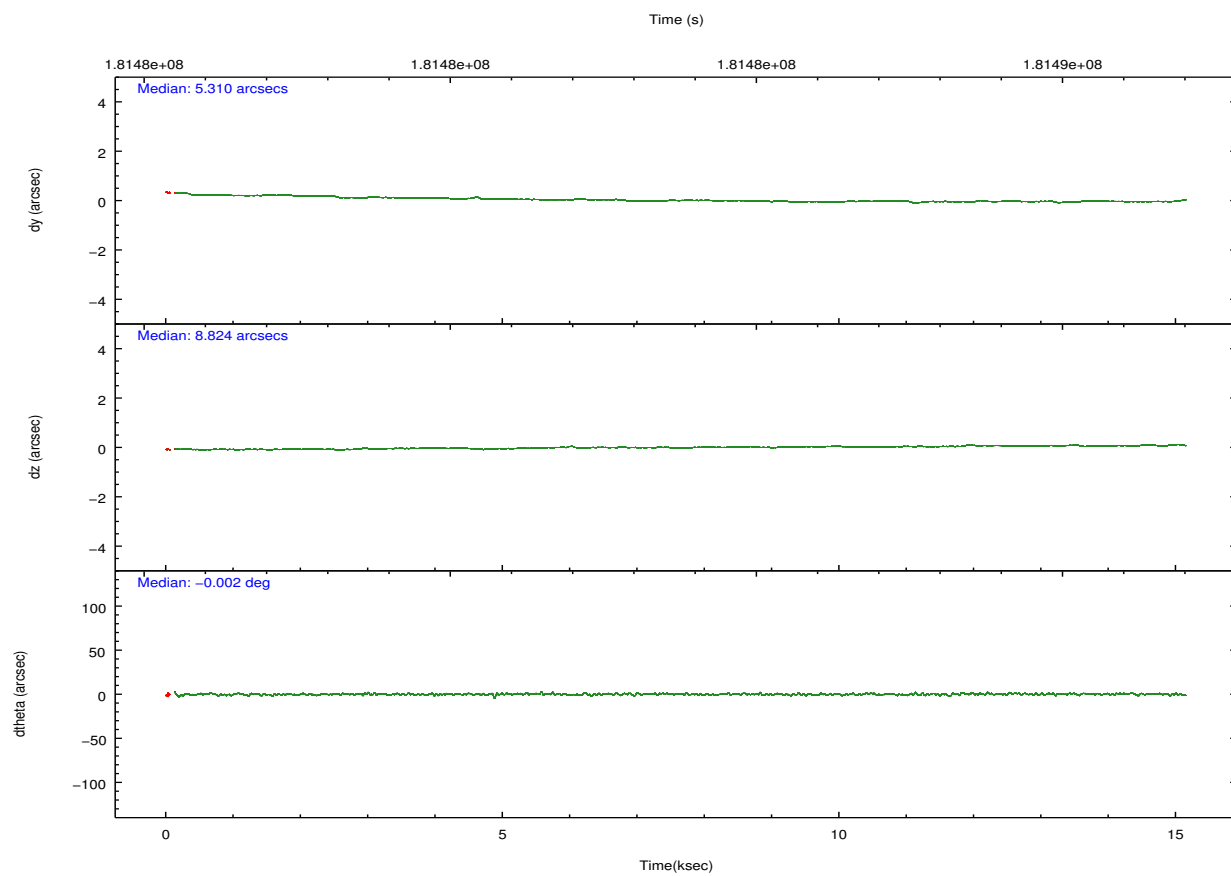
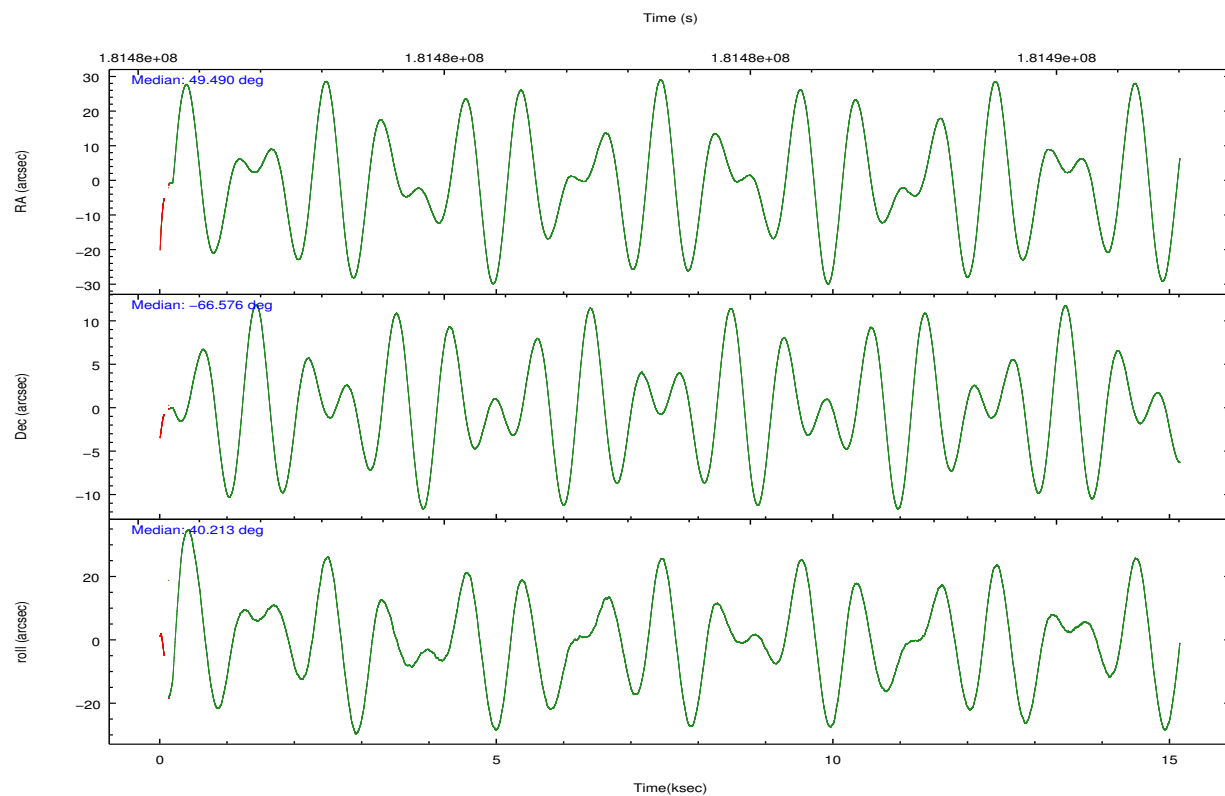


## 2.2 Compared Parameters

Parameter	Planned	Actual	Parameter	Planned	Actual
Instrument	ACIS	ACIS	Obspar format version number	7	7
Detector	ACIS-012367	ACIS-012367	Obspar file type	PREDICTED	ACTUAL
Grating	NONE	NONE	Obspar update status	NONE	UPDATED
Data mode	VFAINT	VFAINT	Number of optional ACIS chips dropped	0	0
Observation mode	POINTING	POINTING	On-chip summing requested	N	N
[deg] Pointing RA	49.467218	49.49032922002068	Subarray requested	NONE	NONE
[deg] Pointing Dec	-66.602208	-66.5763944698565	Alternating exposures requested	N	N
[deg] Pointing Roll	39.989035	40.21893445423037	[s] Primary exposure time	0.000000	3.2
[deg] Roll angle	25.000000	25.000000			
[deg] Roll tolerance	15.000000	15.000000			
Roll constraint allows 180D rotation	N	N			
[mm] SIM focus pos	-0.782348	-0.7809083437167272			
[mm] SIM defocus	0	0.001439871863259334			
[mm] SIM translation stage pos	-233.592463	-233.5874344608287			
[mm] SIM translation stage offset	0	-0.005018542100998502			
[s] Observation start time (MET)	181476269.184000	181475233.85935			
Observation start date	2003-10-02T10:03:25	2003-10-02T09:47:13			
[s] Observation end time (MET)	181491269.184000	181491658.97256			
Observation end date	2003-10-02T14:13:25	2003-10-02T14:20:58			
Read mode	TIMED	TIMED			

## 2.3 Aspect



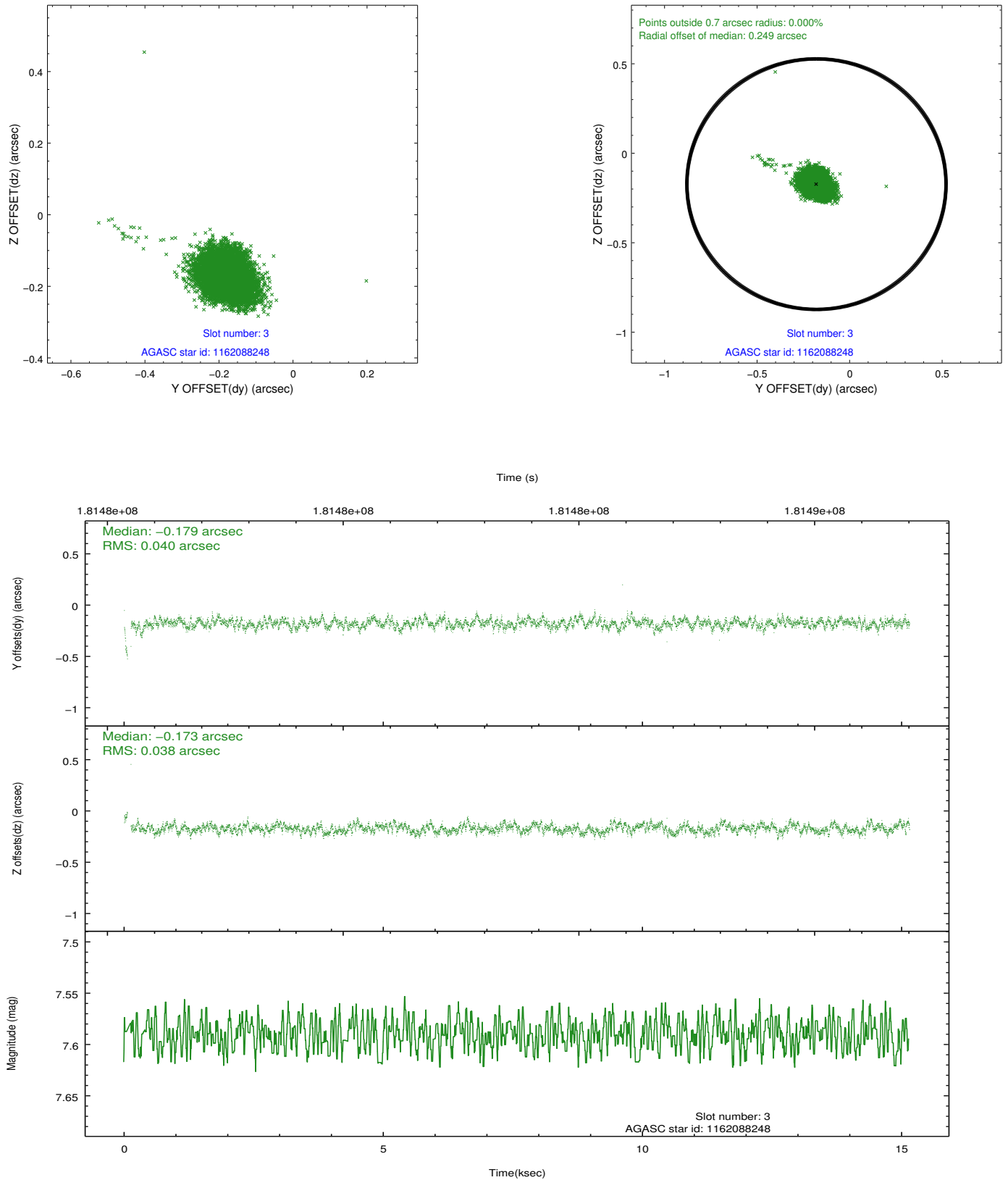


Slot Statistics

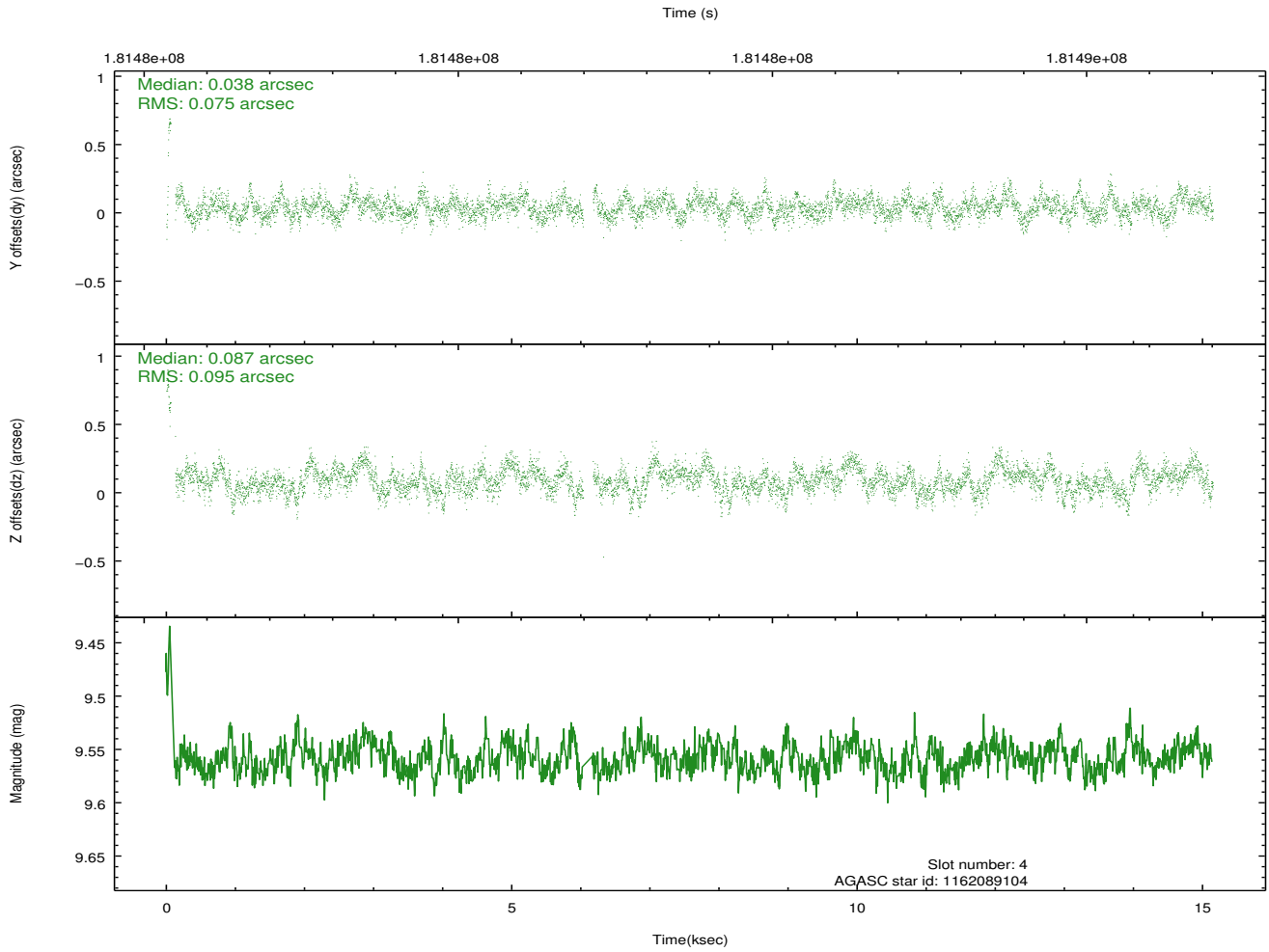
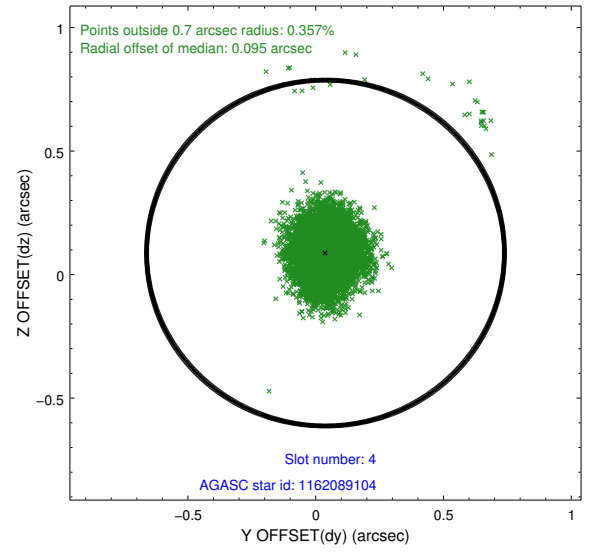
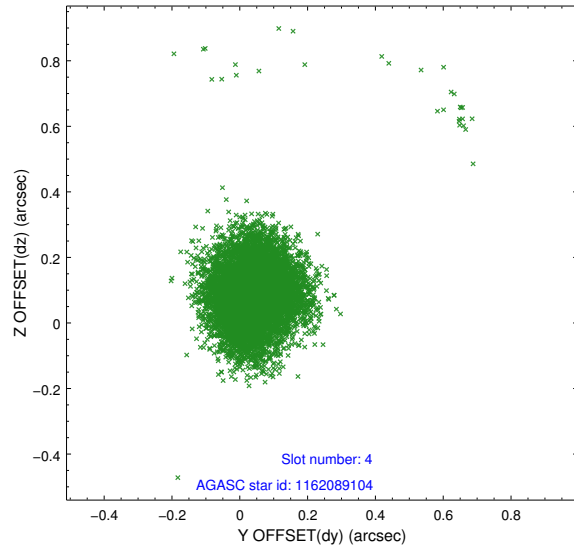
	status	id	mag	n_pts	med_dy	med_dz	drl
	FID	ACIS-I-2	7.13	3680	-0.116	-0.047	0.006
	FID	ACIS-I-4	7.19	3679	0.043	0.067	0.008
	FID	ACIS-I-6	7.25	3679	-0.027	0.043	0.009
	GUIDE	1162088248	7.59	7358	-0.179	-0.173	0.056
	GUIDE	1162089104	9.56	7285	0.038	0.087	0.118
	GUIDE	1162094224	9.71	7357	0.173	0.032	0.120
	GUIDE	1162095544	10.16	7352	-0.036	0.056	0.153
0.0000.0000.0000.0000000.00000000.000.00							

## 2.4 Star Slots

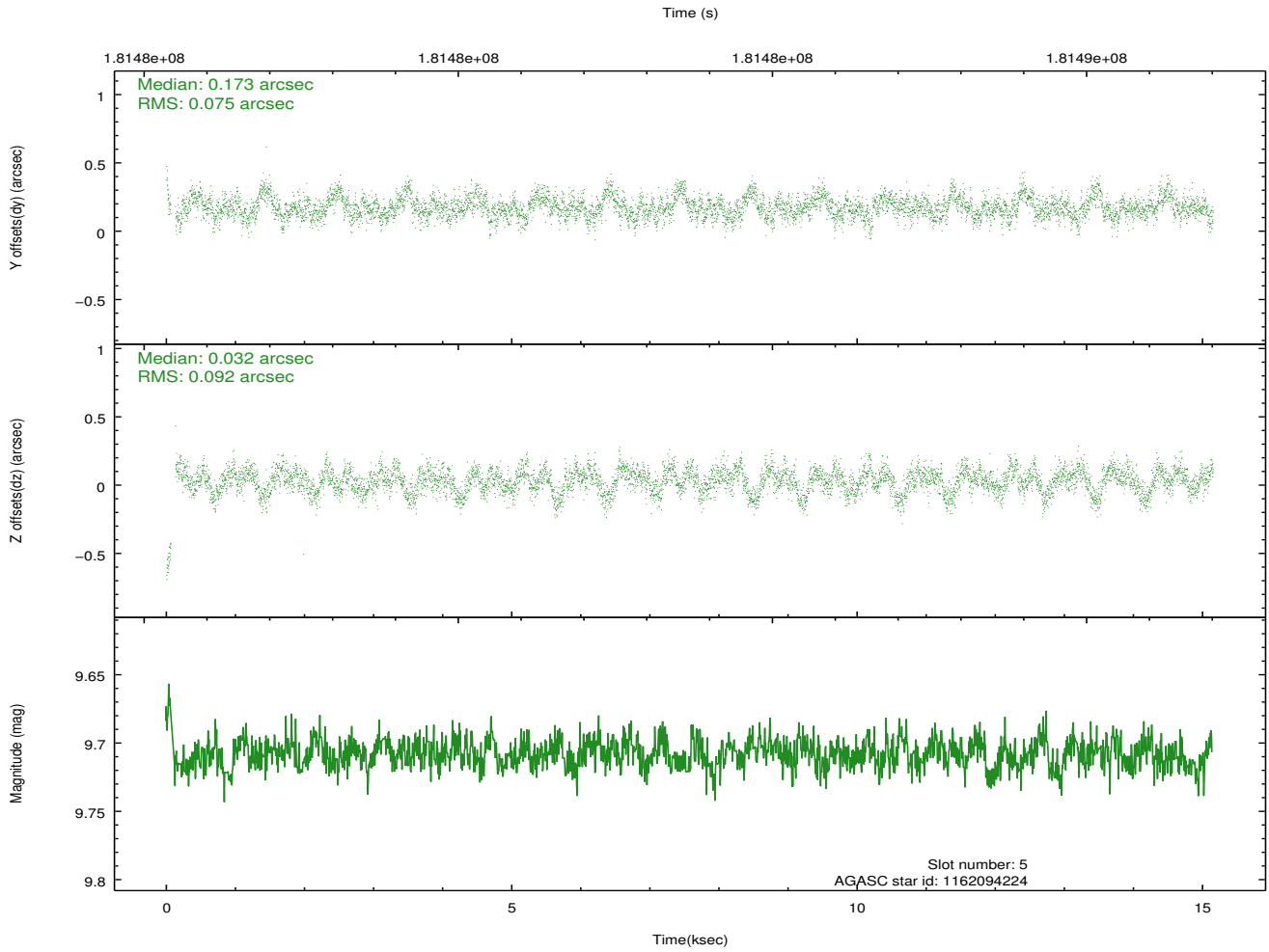
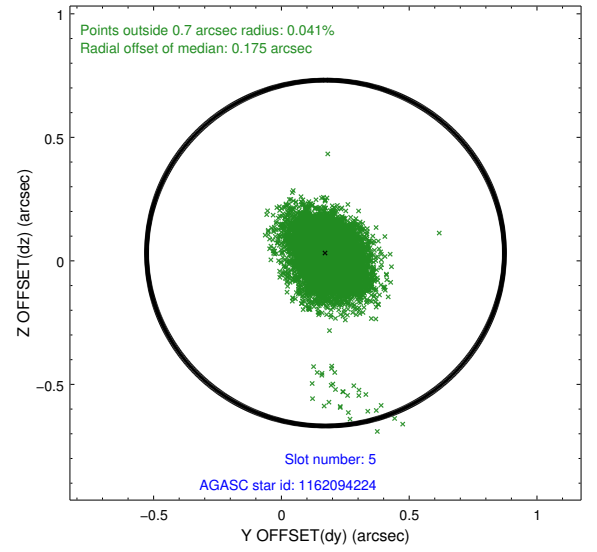
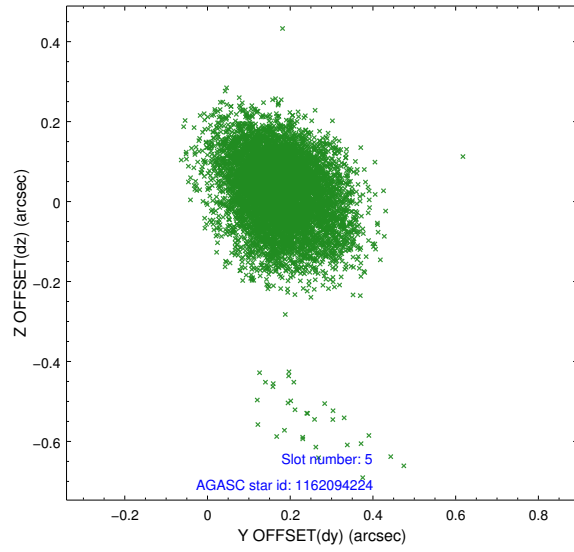
### 2.4.1 Slot 3



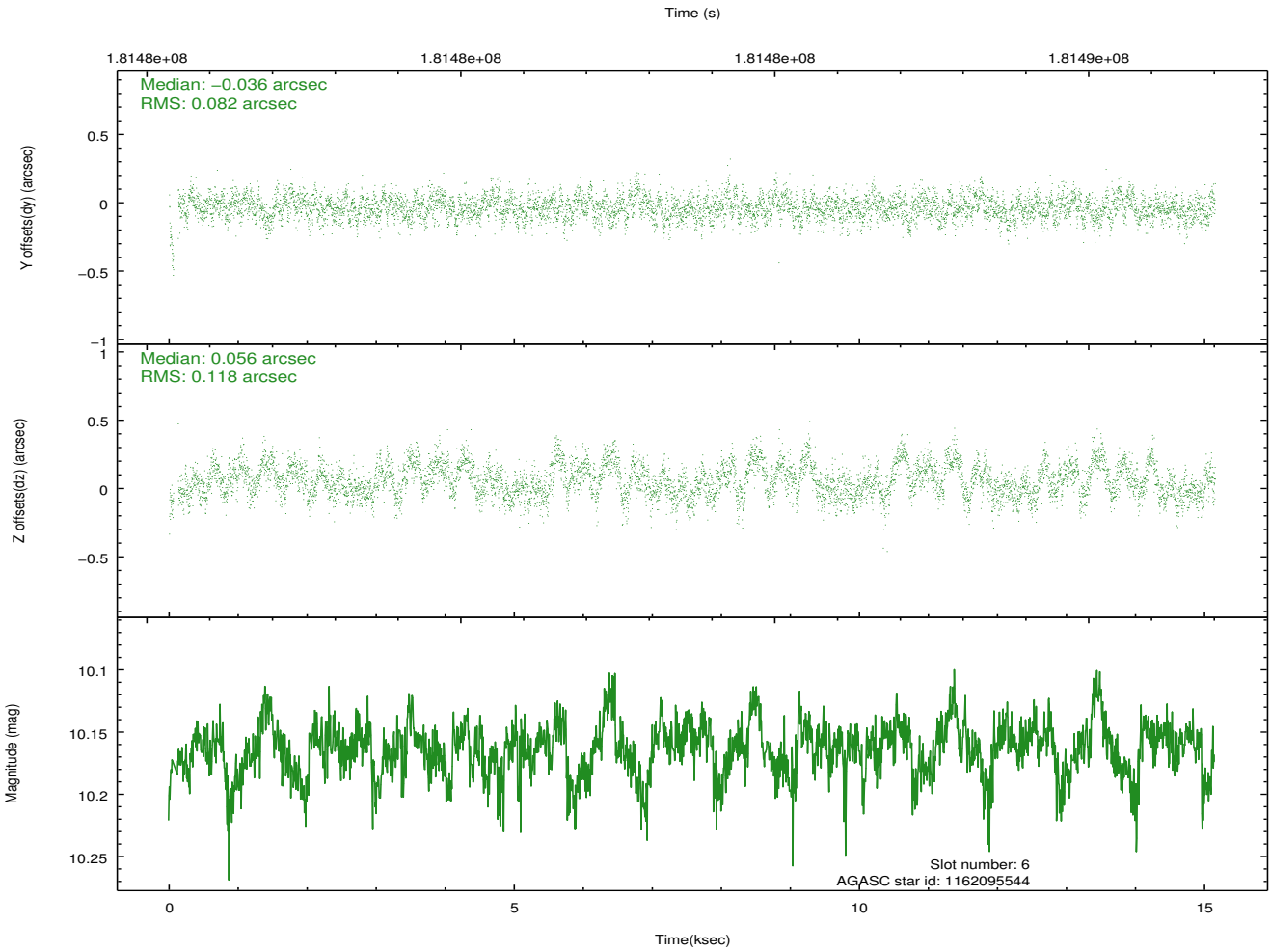
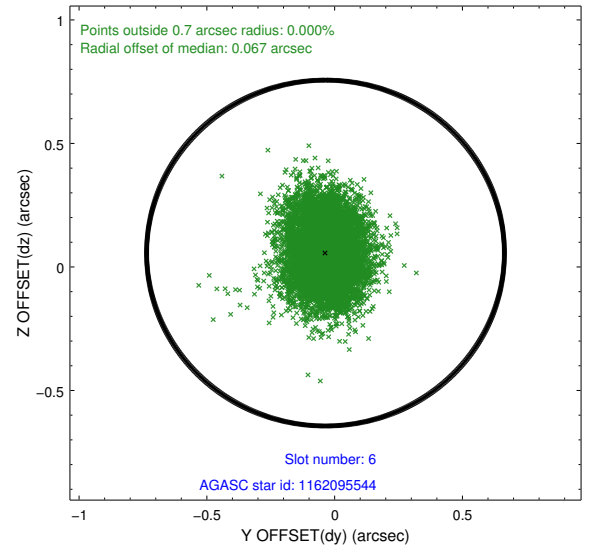
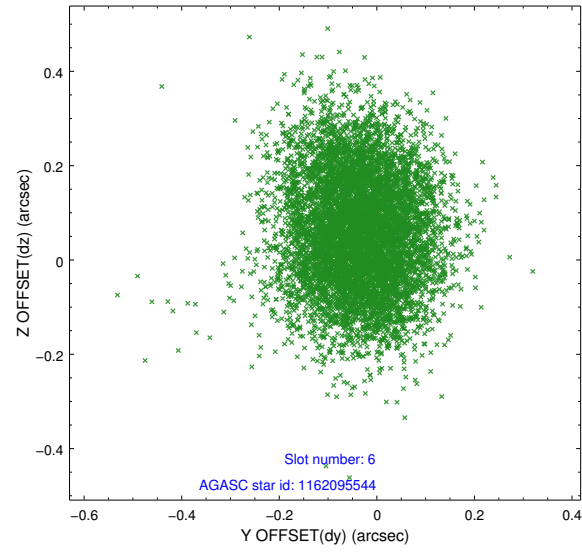
## 2.4.2 Slot 4



### 2.4.3 Slot 5



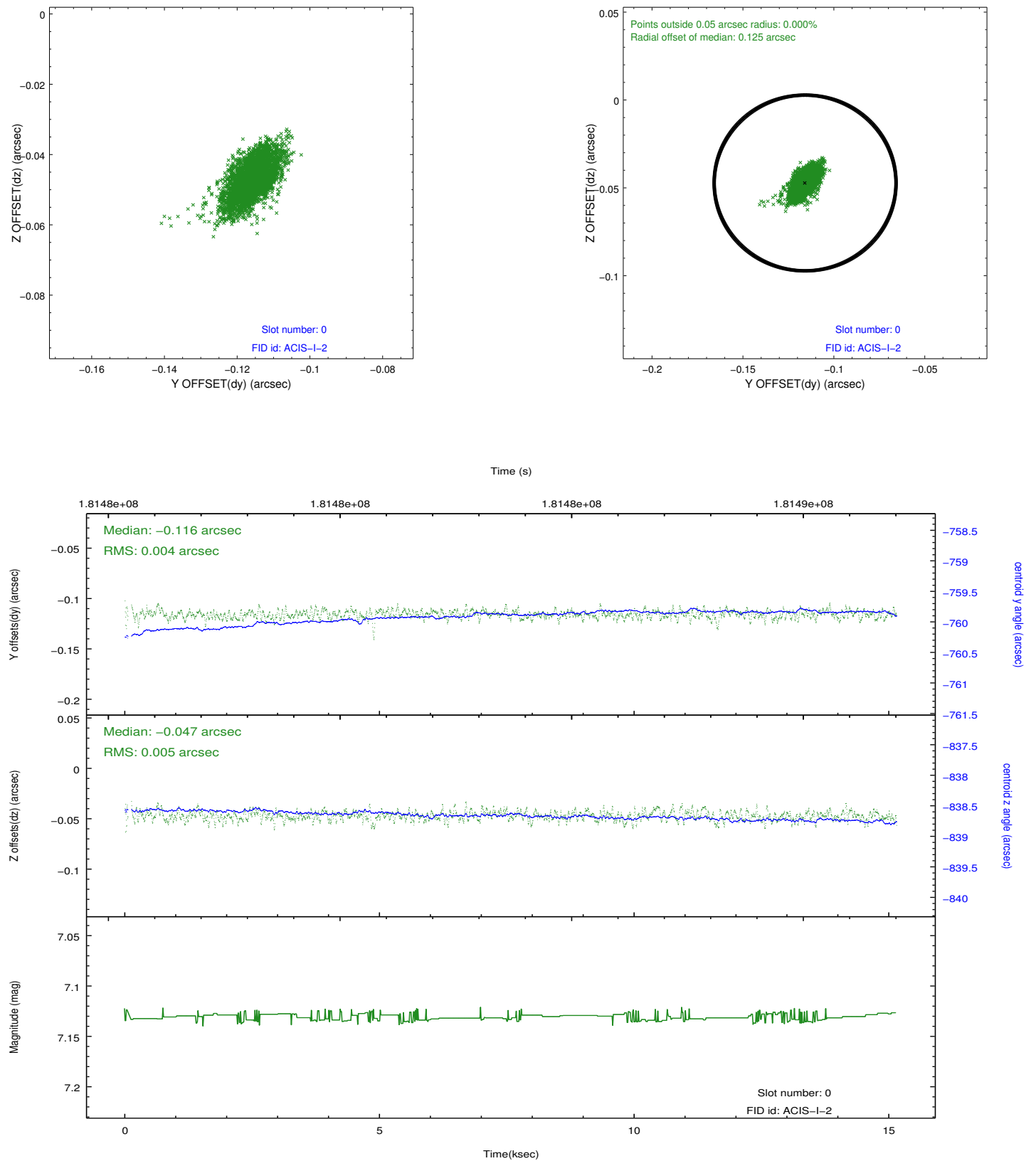
## 2.4.4 Slot 6



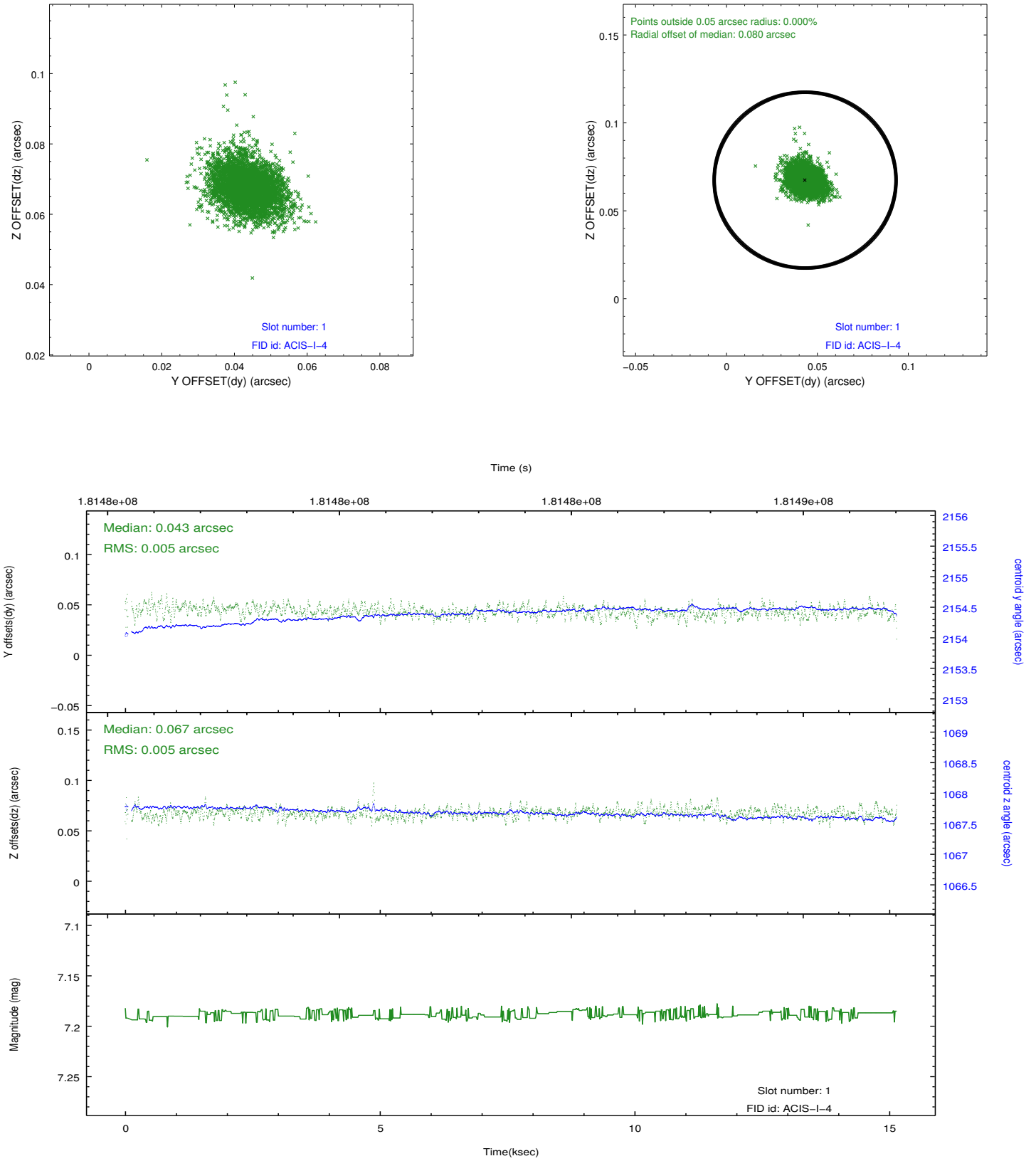


## 2.5 FID Slots

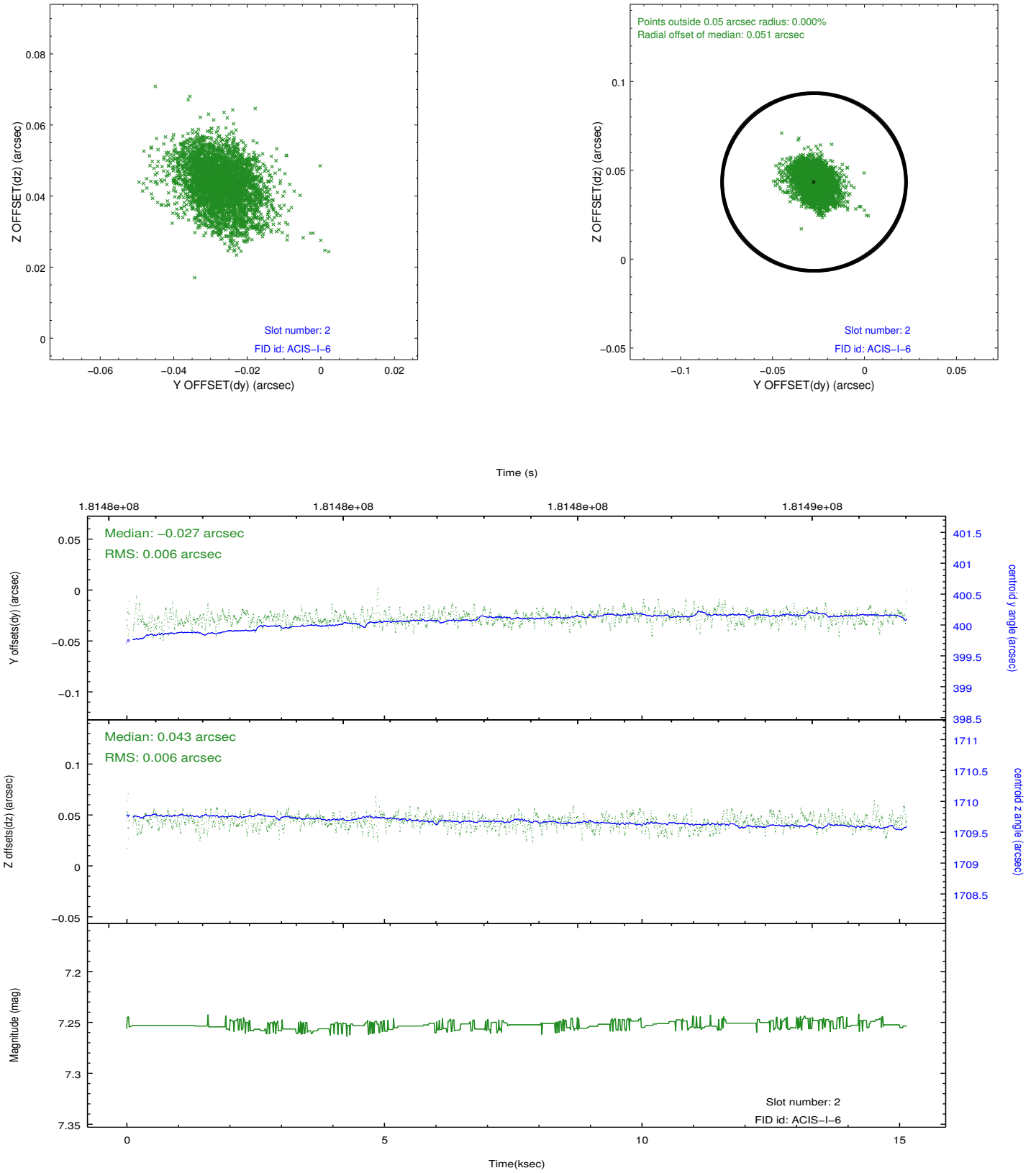
### 2.5.1 Slot 0



## 2.5.2 Slot 1



### 2.5.3 Slot 2



## A Summary

### A.1 Status

V&V Scientist	Jen Lauer
V&V Date (YYYY-MM-DD)	2012.11.30
V&V Edition	1
V&V Disposition and Status	OK
V&V Charge Time	15.017

### A.2 Comments

Roll constraint not satisfied: requested roll 10 - 40 degrees, actual roll 40.22 degrees.