

V&V Reference Report

L2 ASCDS Version : 7.6.8

Observation 3551 - L2 Version 001
Chandra X-Ray Center

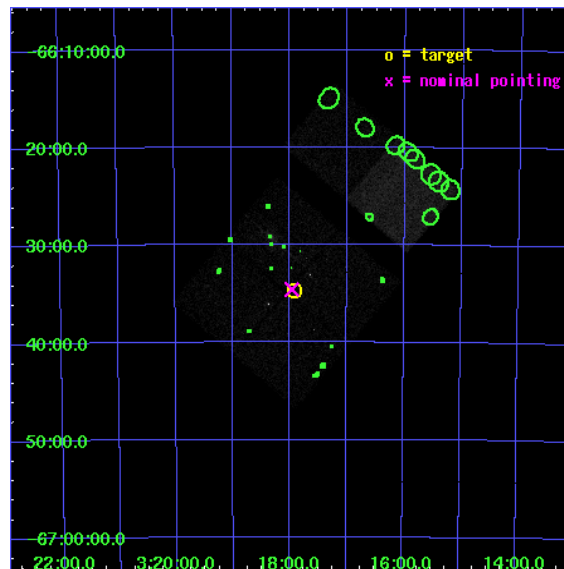
L2 Processing Date : Jul 1 2006

Contents

1	Front	2
2	OBI	3
2.1	OBI	3
2.1.1	Images	3
2.1.2	Bias	3
2.1.3	Parameters	4
2.1.4	Events	4
2.2	Compared Parameters	5
2.3	Aspect	6
2.4	Star Slots	9
2.4.1	Slot 3	9
2.4.2	Slot 4	10
2.4.3	Slot 5	11
2.4.4	Slot 6	12
2.5	FID Slots	13
2.5.1	Slot 0	13
2.5.2	Slot 1	14
2.5.3	Slot 2	15
3	Point Sources	16
A	Summary	17
A.1	Status	17
A.2	Comments	17

1 Front

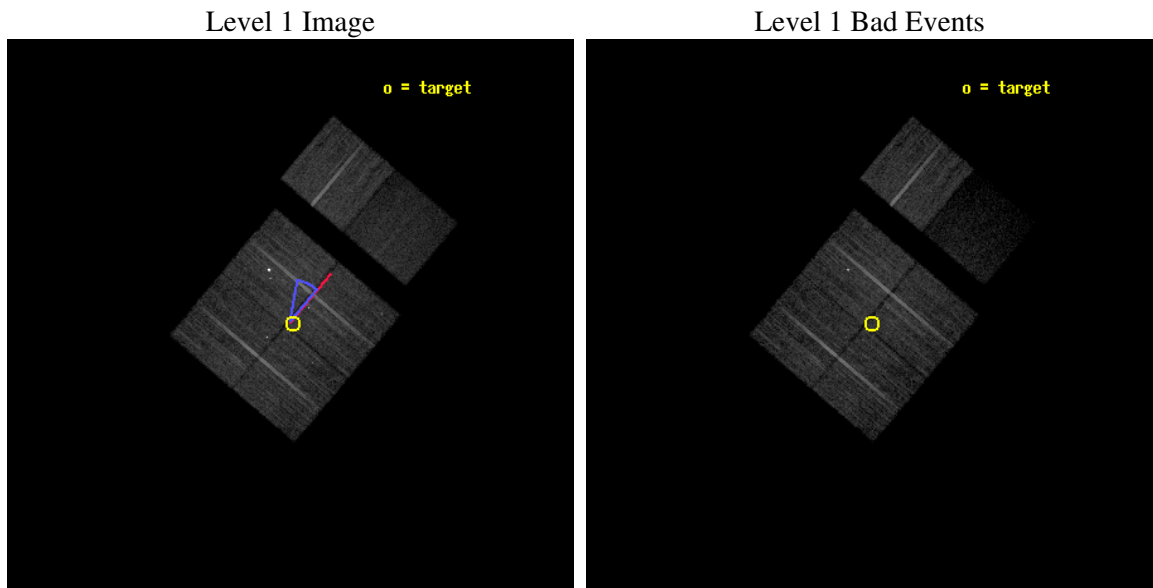
seq_num	600296
obs_id	3551
title	X-RAY SOURCES IN THE NEARBY BARRED SPIRAL GALAXY NGC 1313
observer	Professor Gordon Garmire
object	NGC 1313
dtcycle	0
cycle	P
ra_targ	49.479167
dec_targ	-66.577778
ra_nom	49.490275706004
dec_nom	-66.576412327049
roll_nom	40.218885343435
revision	2
ontime	15017.599944055
livetime	14827.43805105
ontime0	15017.599944055
ontime1	15017.599944055
ontime2	15017.599944055
ontime3	15017.599944055
ontime6	15017.599944055
ontime7	15017.599944055
l2events	61067



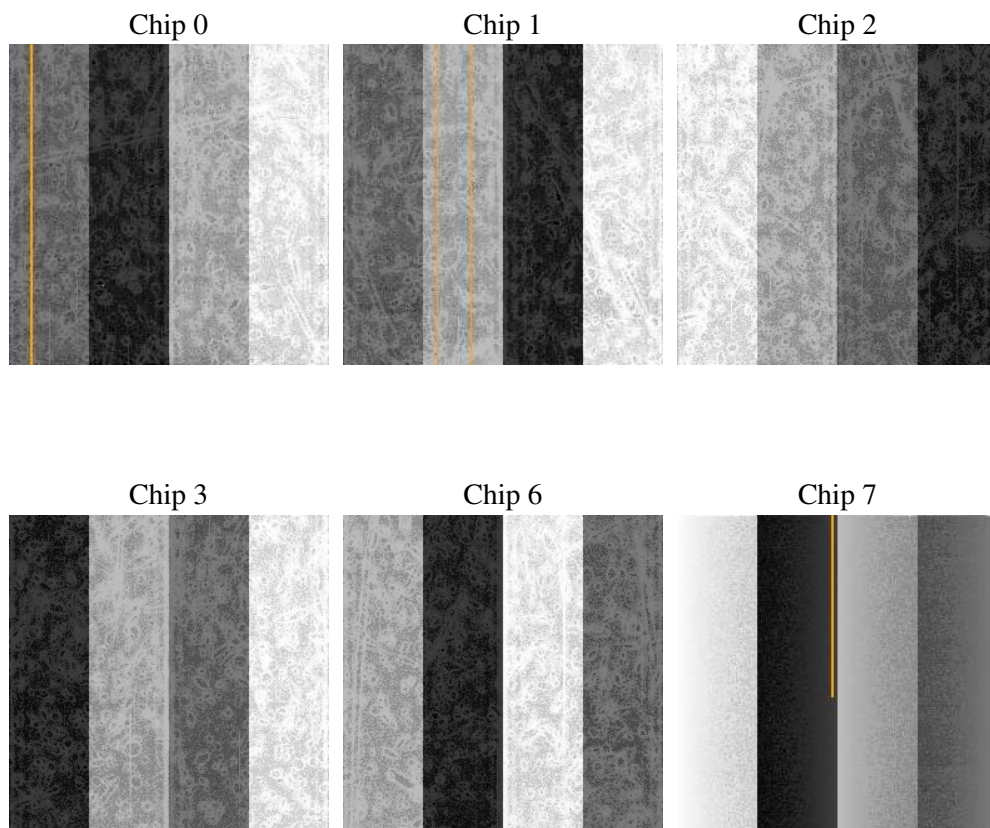
2 OBI

2.1 OBI

2.1.1 Images



2.1.2 Bias



2.1.3 Parameters

obi_num	0
ascdsver	7.6.8
caldbver	3.2.2
date	2006-07-01T15:55:11
revision	2

sched_exp_time	15000.000000
ontime	15116.043809325
ontime0	15116.043809325
ontime1	15116.043809325
ontime2	15116.043809325
ontime3	15116.043809325
ontime6	15116.043809325
ontime7	15116.043809325
l1events	411349

2.1.4 Events

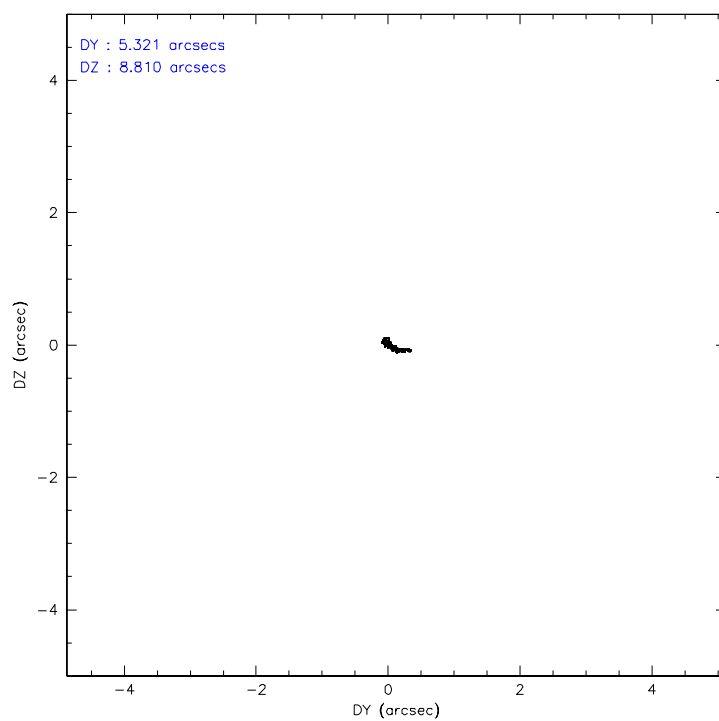
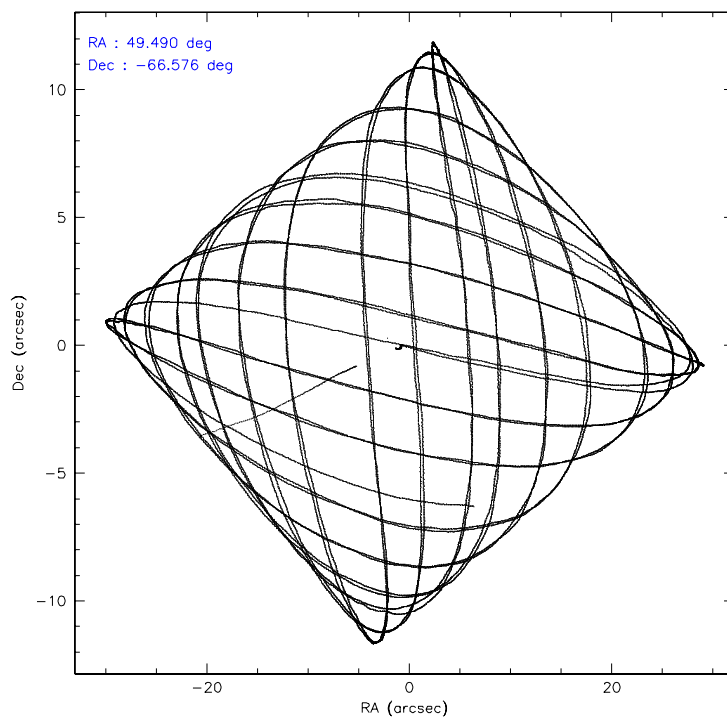
	ccd 0	ccd 1	ccd 2	ccd 3	ccd 6	ccd 7
level 1 events	68207	65825	92744	71402	72734	40437
rejected events	60072	59367	74168	64410	66406	18514
rejected %	88%	90%	79%	90%	91%	45%

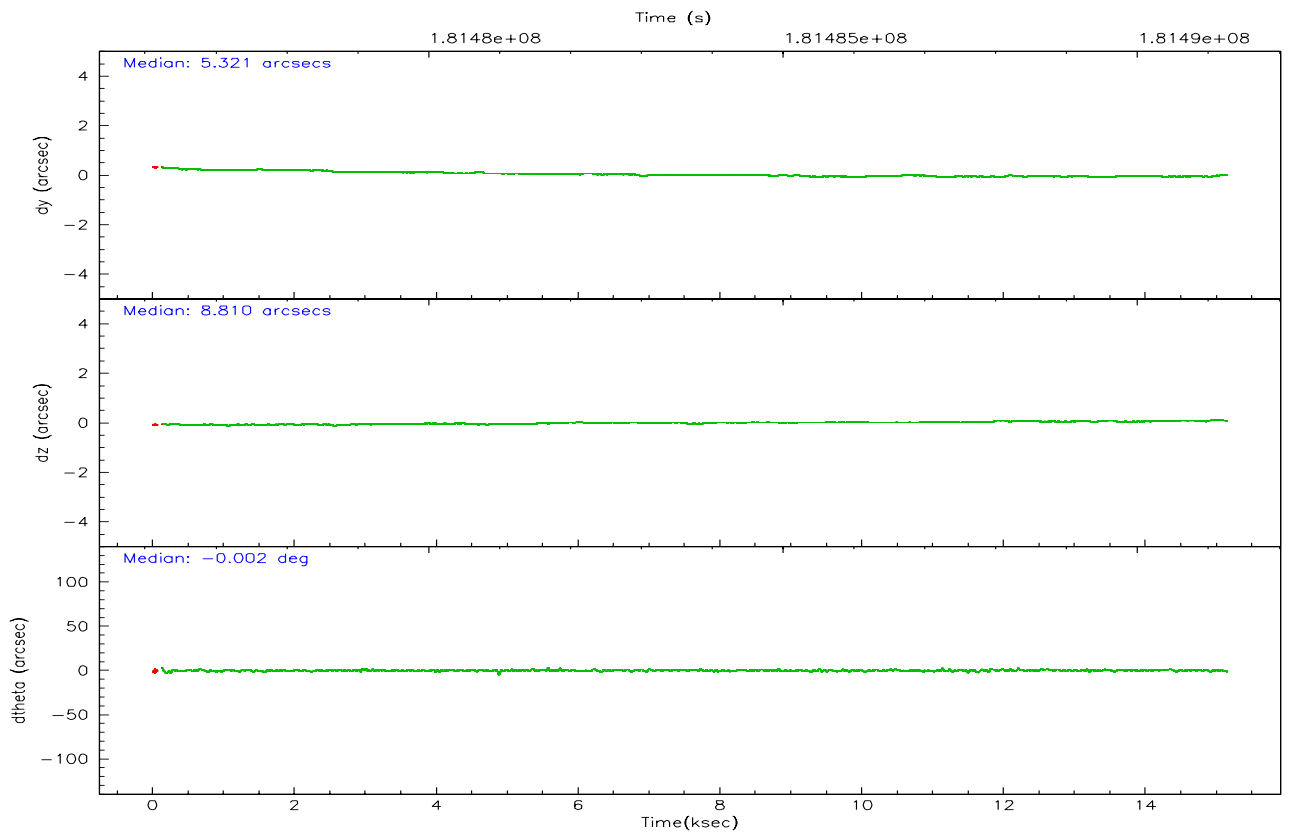
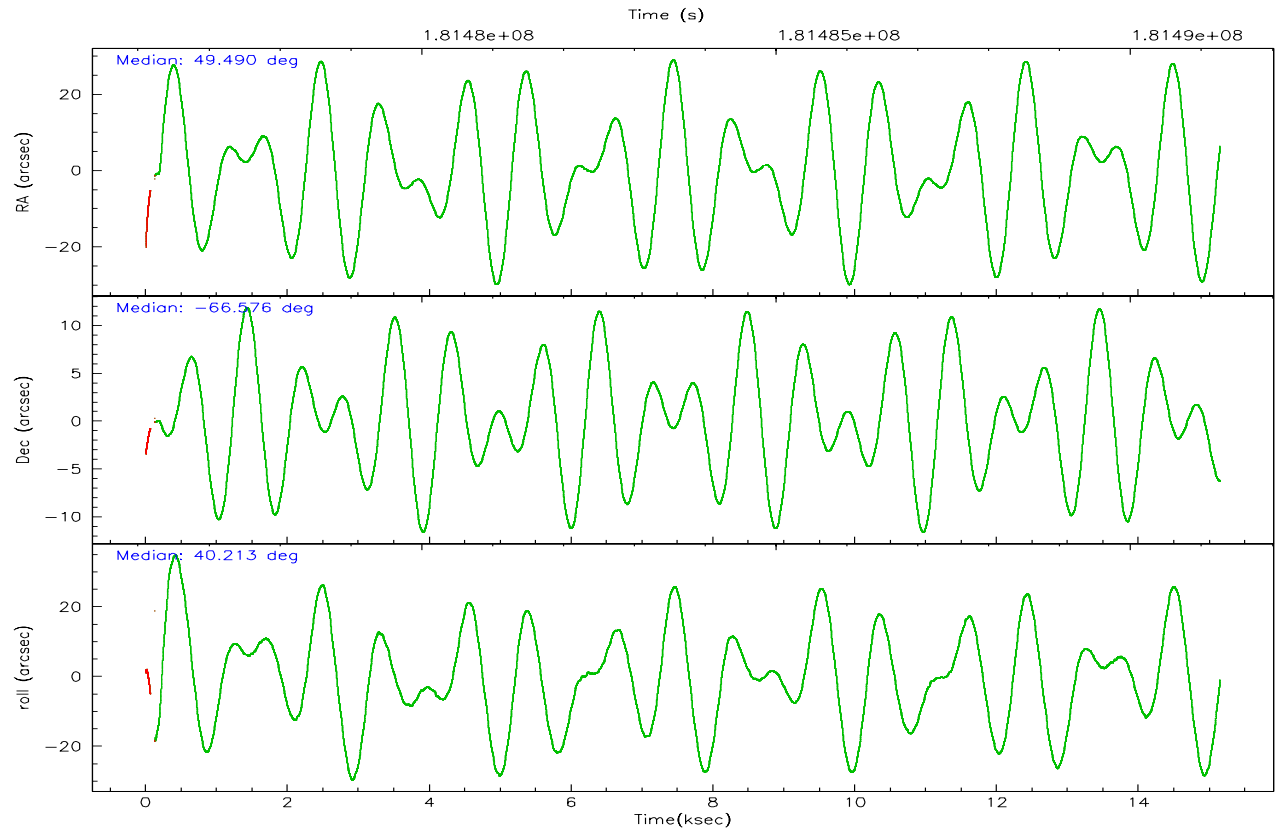
	ccd 0	ccd 1	ccd 2	ccd 3	ccd 6	ccd 7
grade 0 events	3948	2506	12002	3470	2662	2072
	5%	3%	12%	4%	3%	5%
grade 1 events	91	27	577	77	39	38
	0%	0%	0%	0%	0%	0%
grade 2 events	1680	1277	2973	1246	1304	6194
	2%	1%	3%	1%	1%	15%
grade 3 events	816	822	1178	725	719	1731
	1%	1%	1%	1%	0%	4%
grade 4 events	738	806	1213	680	718	1634
	1%	1%	1%	0%	0%	4%
grade 5 events	1223	1367	1374	1471	1395	3381
	1%	2%	1%	2%	1%	8%
grade 6 events	1011	1087	1327	923	969	10435
	1%	1%	1%	1%	1%	25%
grade 7 events	58700	57933	72100	62810	64928	14952
	86%	88%	77%	87%	89%	36%

2.2 Compared Parameters

Parameter	Planned	Actual	Parameter	Planned	Actual
Instrument	ACIS	ACIS	Obspar format version number	6	6
Detector	ACIS-012367	ACIS-012367	Obspar file type	PREDICTED	ACTUAL
Grating	NONE	NONE	Obspar update status	NONE	UPDATED
Data mode	VFAINT	VFAINT	On-chip summing requested	N	N
Observation mode	POINTING	POINTING	Subarray requested	NONE	NONE
Pointing RA	49.467218	49.49027570600443	Alternating exposures requested	N	N
Pointing Dec	-66.602208	-66.57641232704856	Primary exposure time	0.000000	3.2
Pointing Roll	39.989035	40.2188853434348			
Roll angle	25.000000	25.000000			
Roll tolerance	15.000000	15.000000			
Roll constraint allows 180D rotation	N	N			
SIM focus pos (mm)	-0.782348	-0.7809083437167272			
SIM defocus (mm)	0	0.001439871863259334			
SIM translation stage pos (mm)	-233.592463	-233.5874344608287			
SIM translation stage offset (mm)	0	-0.005018542100998502			
Observation start time	181476269.184000	181475233.85935			
Observation start date	2003-10-02T10:03:25	2003-10-02T09:47:13			
Observation end time	181491269.184000	181491658.97256			
Observation end date	2003-10-02T14:13:25	2003-10-02T14:20:58			
Read mode	TIMED	TIMED			

2.3 Aspect



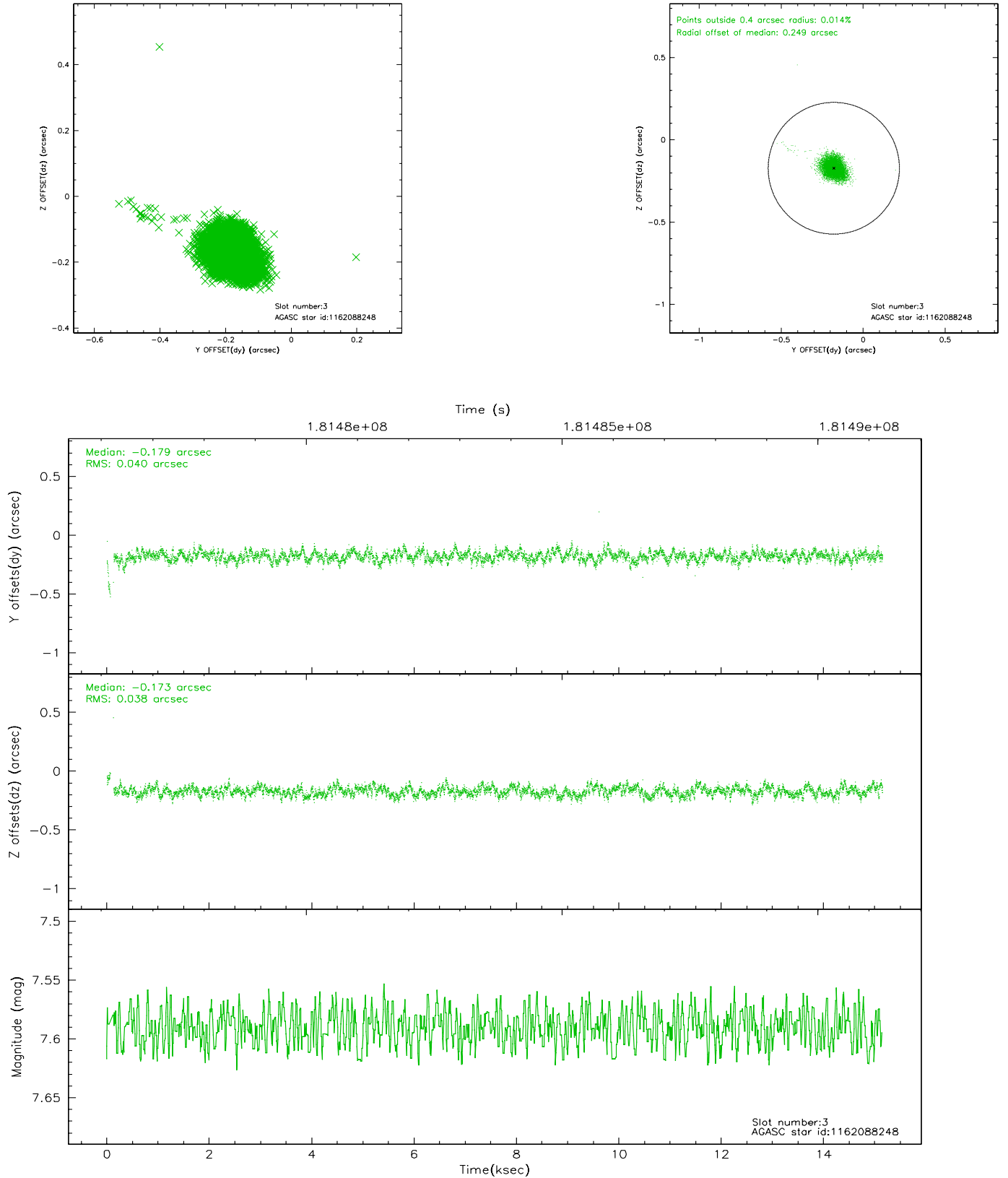


Slot Statistics

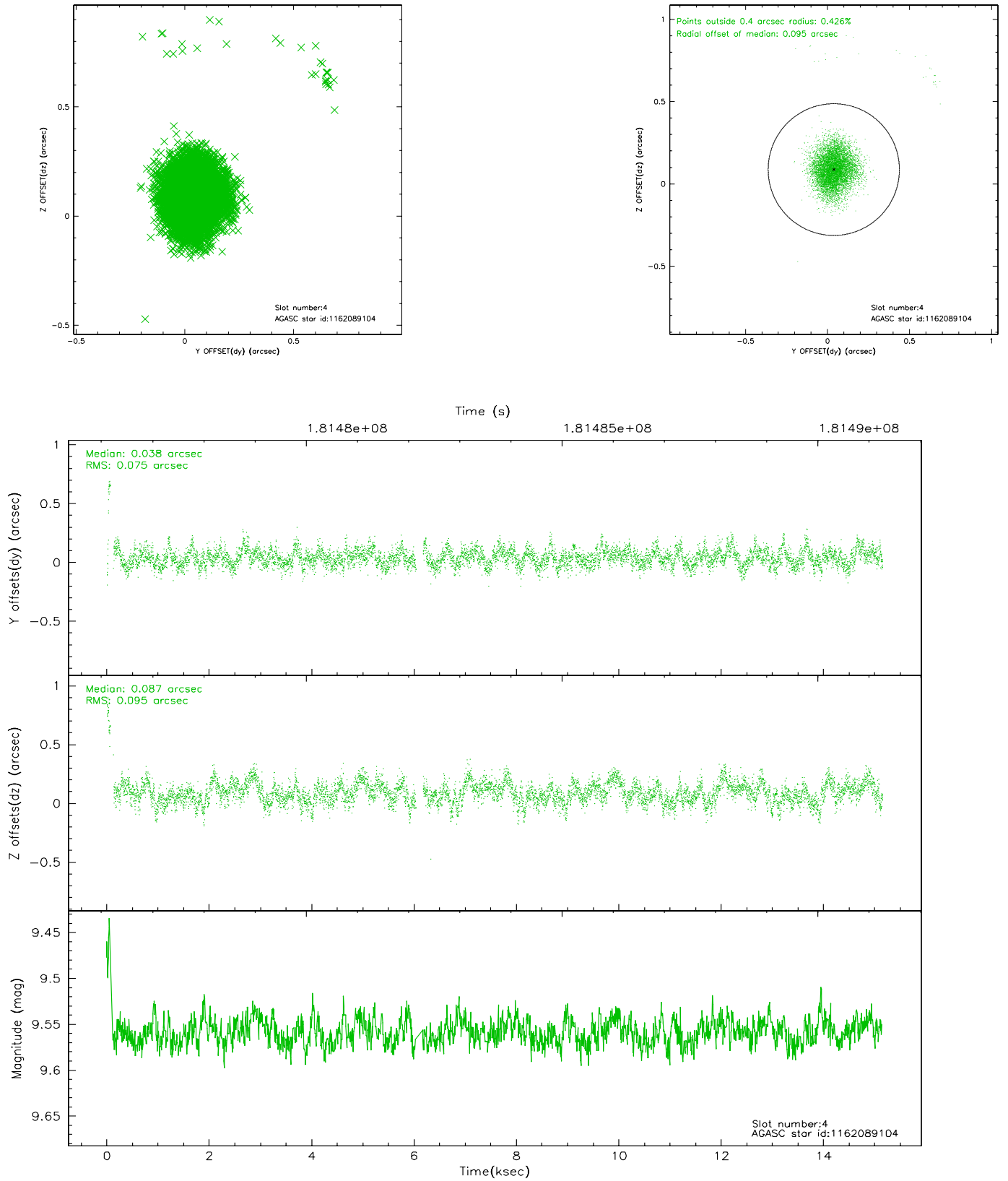
slot	status	id	mag	n_pts	med_dy	med_dz	dr1	dr2	ra	dec	mean_y	mean_z
0	FID	ACIS-I-2	7.13	3680	-0.091	-0.020	0.006	0.010	0.000000	0.000000	-759.91	-838.62
1	FID	ACIS-I-4	7.19	3679	0.015	0.060	0.007	0.012	0.000000	0.000000	2154.14	1067.45
2	FID	ACIS-I-6	7.25	3679	-0.024	0.024	0.009	0.015	0.000000	0.000000	400.65	1709.96
3	GUIDE	1162088248	7.59	7358	-0.179	-0.173	0.056	0.092	49.751966	-65.888113	1971.82	1699.63
4	GUIDE	1162089104	9.56	7284	0.038	0.087	0.118	0.190	48.422126	-66.410699	-718.59	1486.06
5	GUIDE	1162094224	9.71	7357	0.173	0.032	0.120	0.201	49.638584	-66.701903	-43.96	-432.05
6	GUIDE	1162095544	10.16	7352	-0.036	0.056	0.153	0.244	48.846024	-66.171463	301.12	1765.06
7	MONITOR		0.00	0	0.000	0.000	0.000	0.000	0.000000	0.000000	0.00	0.00

2.4 Star Slots

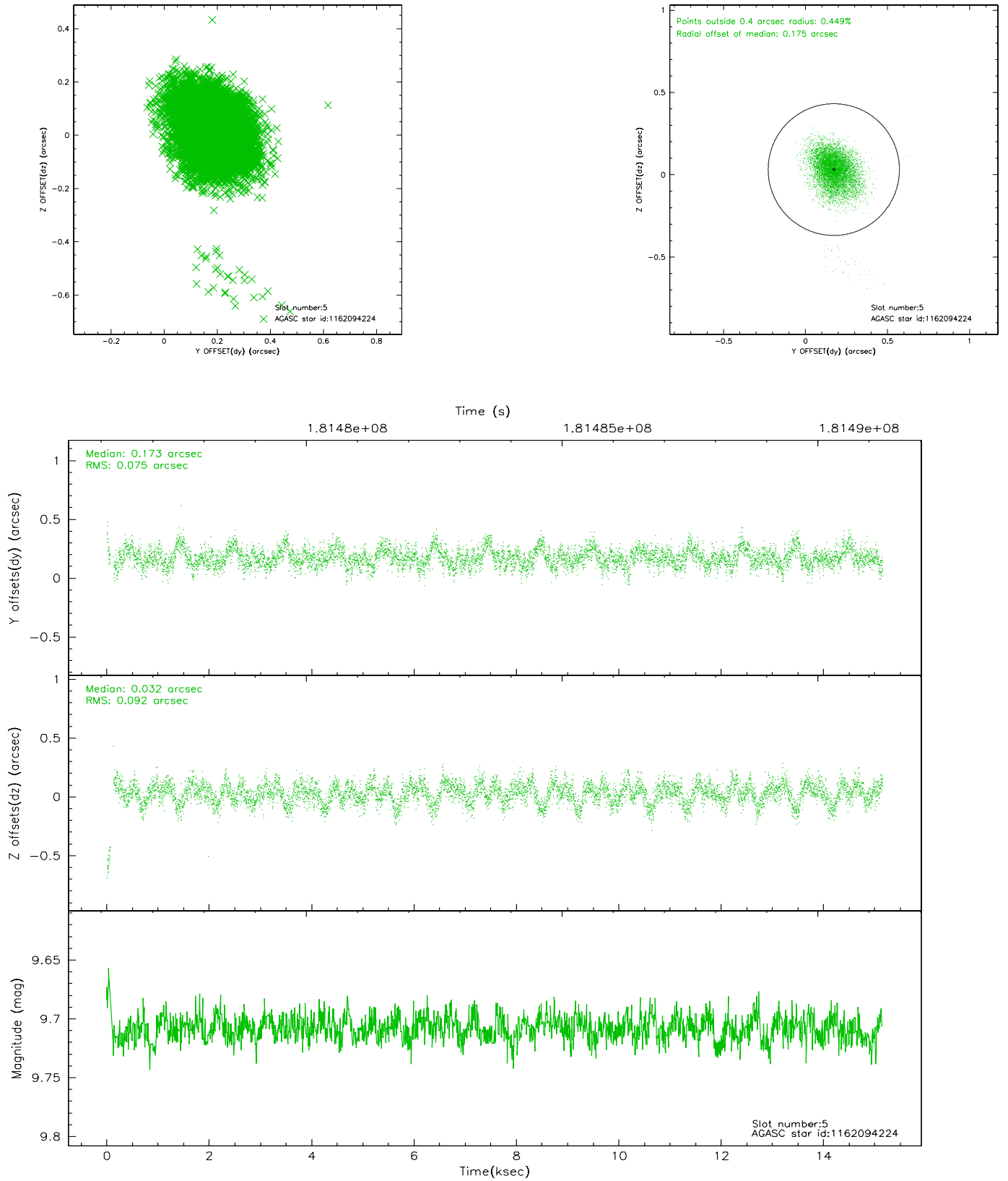
2.4.1 Slot 3



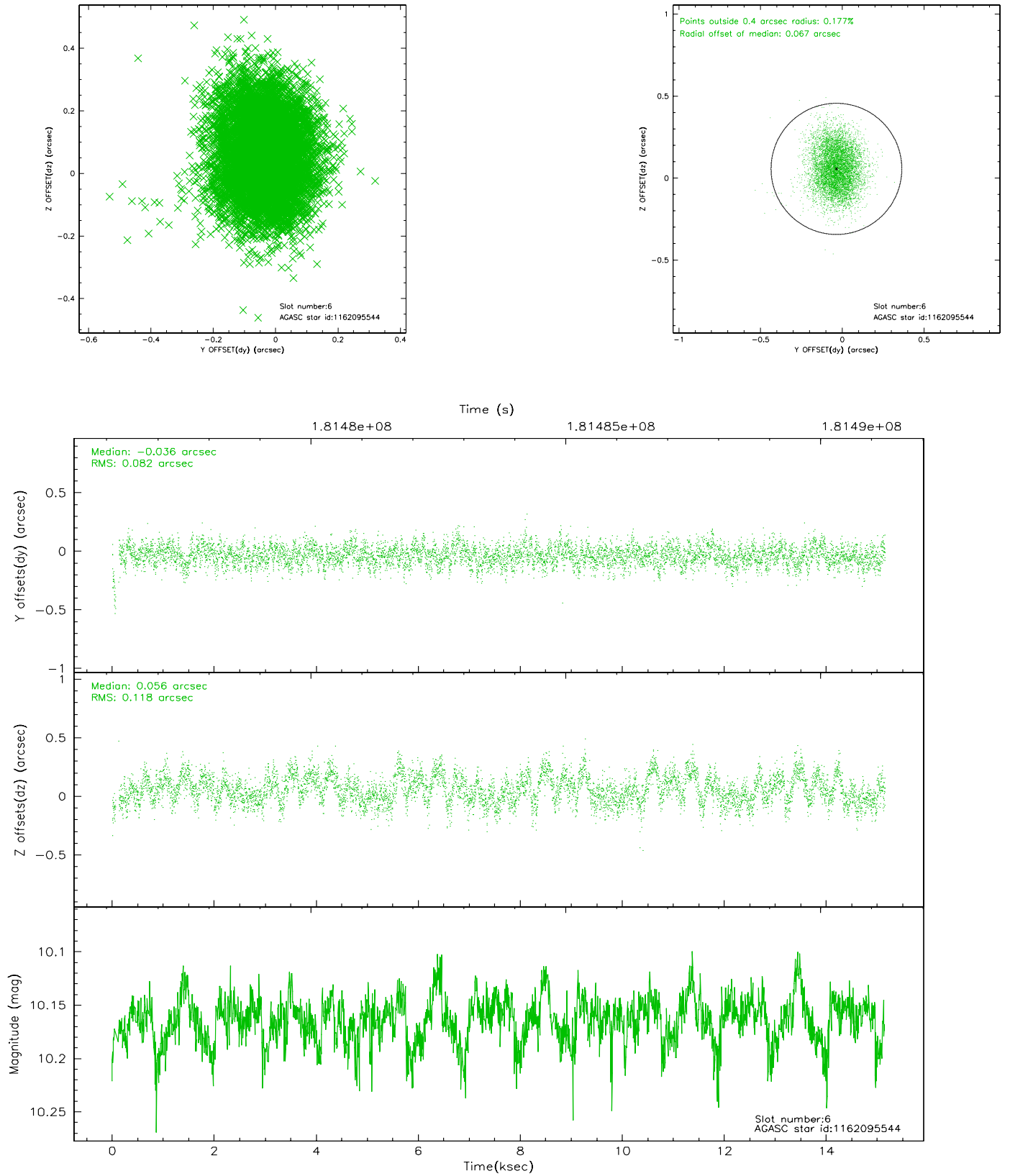
2.4.2 Slot 4



2.4.3 Slot 5

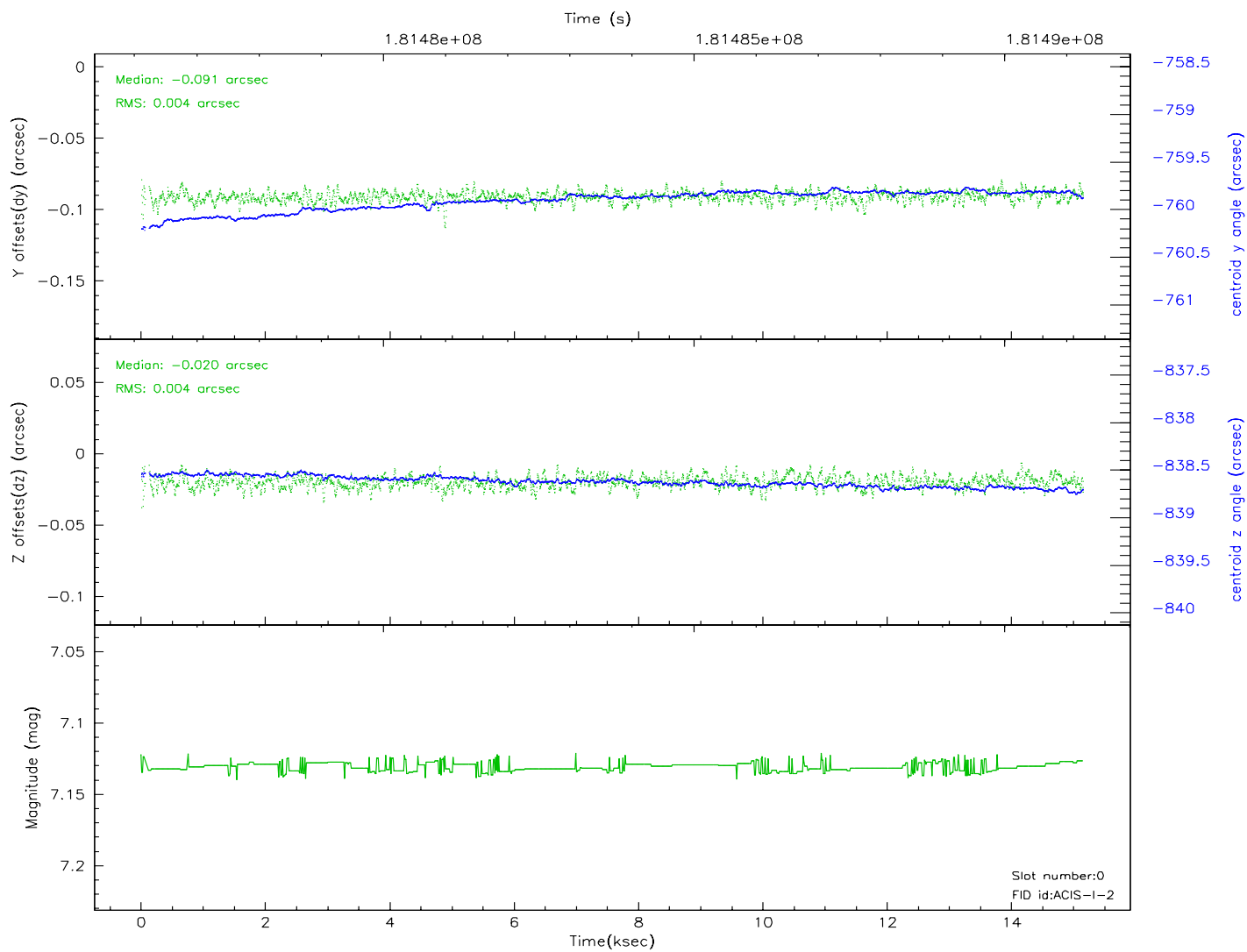
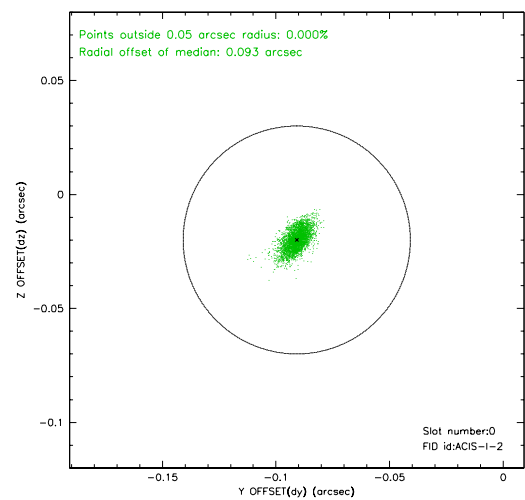
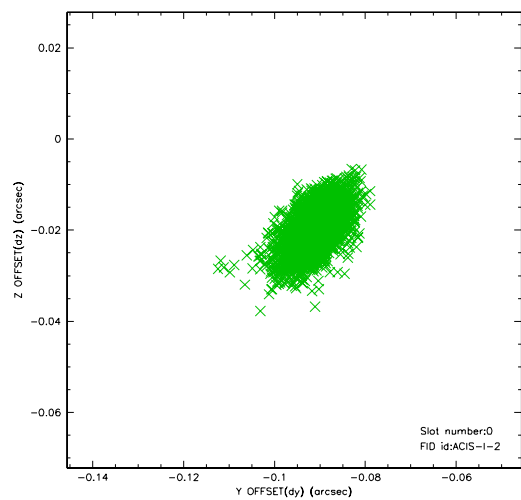


2.4.4 Slot 6

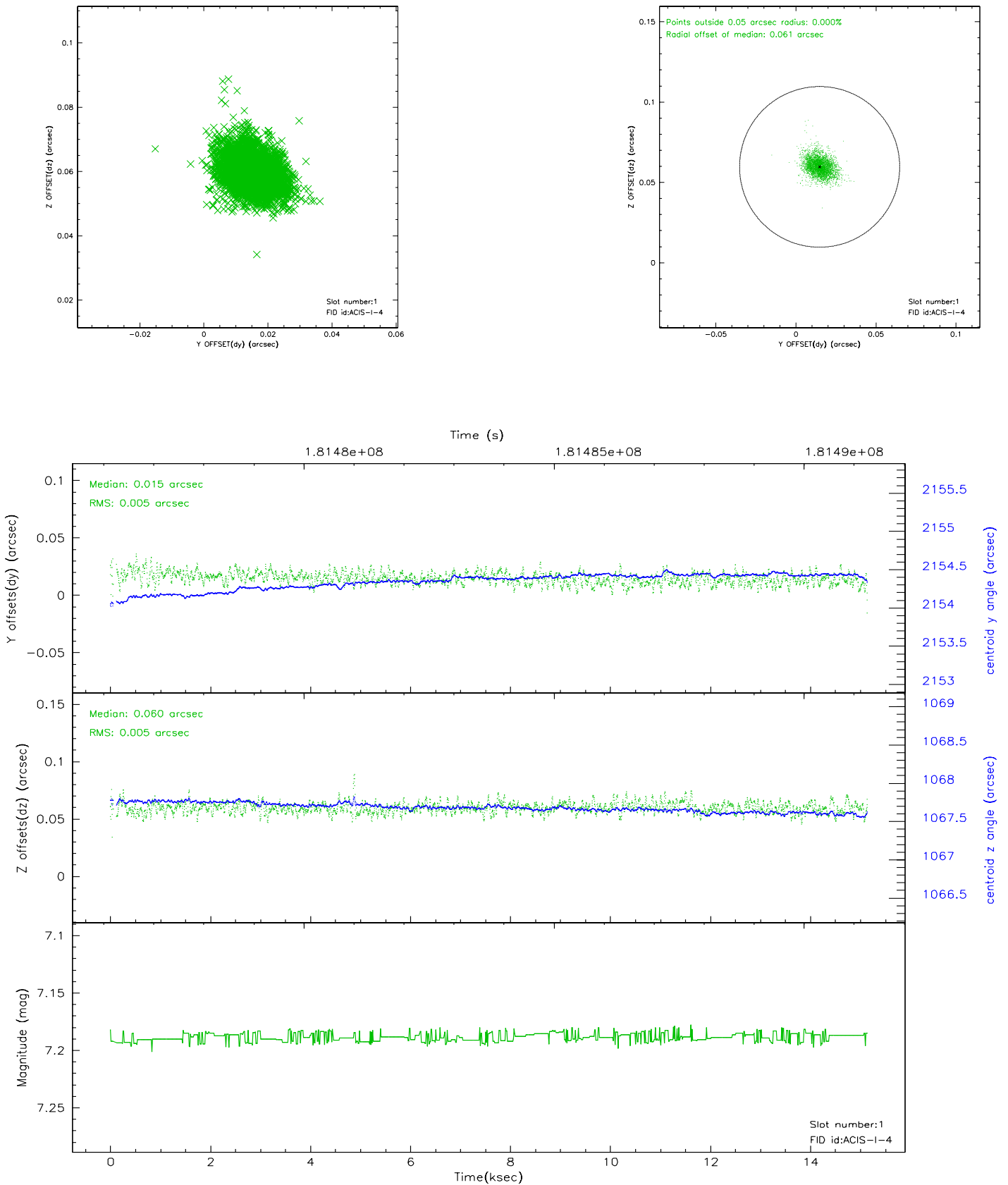


2.5 FID Slots

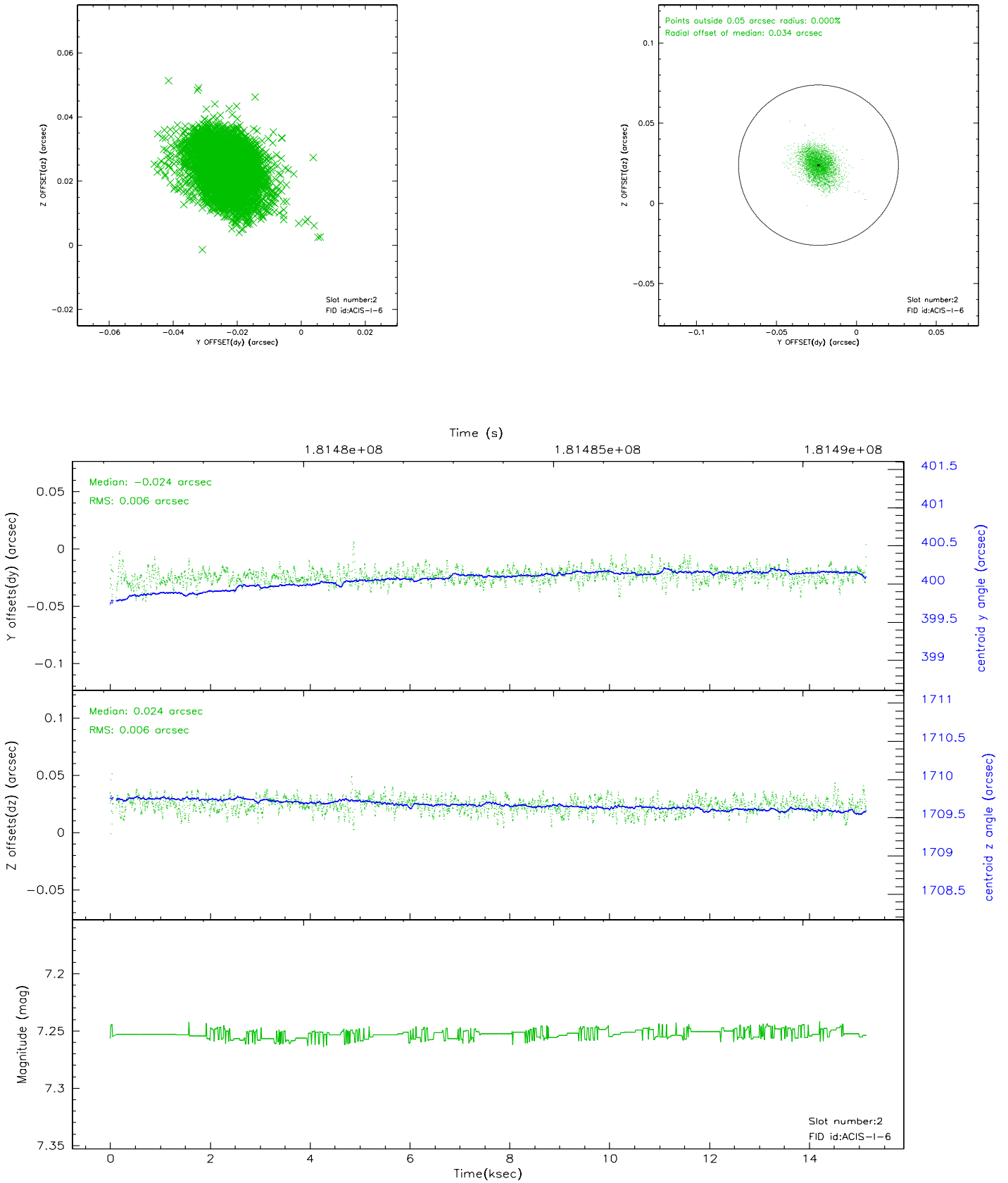
2.5.1 Slot 0



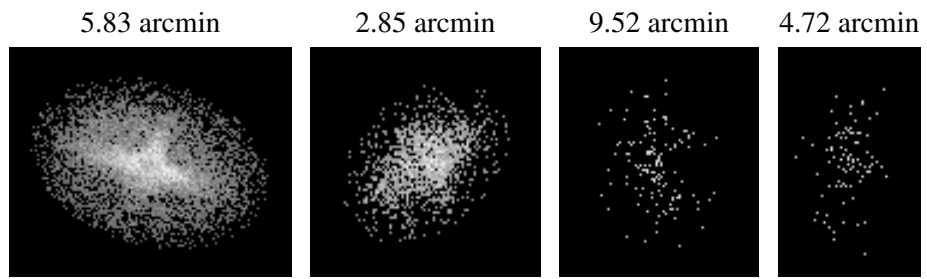
2.5.2 Slot 1



2.5.3 Slot 2



3 Point Sources



A Summary

A.1 Status

V&V Scientist	Beth Sundheim
V&V Date (YYYY-MM-DD)	2006.07.03
V&V Edition	1
V&V Disposition and Status	OK
V&V Charge Time	15.017

A.2 Comments

Roll constraint not satisfied.