

# V&V Reference Report

## L2 ASCDS Version : 7.6.8

Observation 5246 - L2 Version 001  
Chandra X-Ray Center

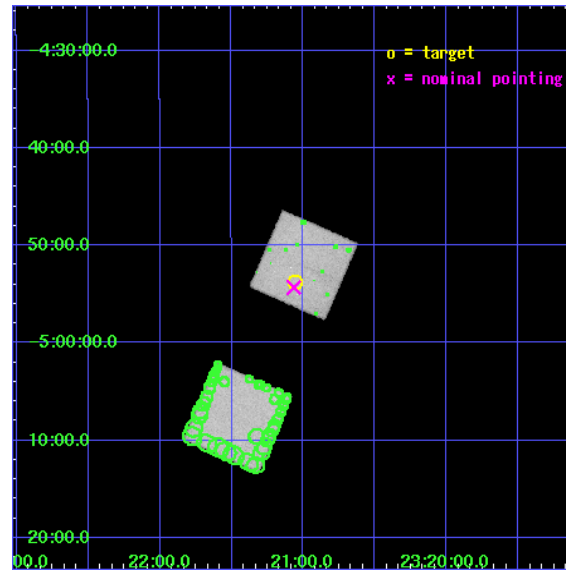
L2 Processing Date : Jun 30 2006

## Contents

<b>1</b>	<b>Front</b>	<b>2</b>
<b>2</b>	<b>OBI</b>	<b>3</b>
2.1	OBI . . . . .	3
2.1.1	Images . . . . .	3
2.1.2	Bias . . . . .	3
2.1.3	Parameters . . . . .	4
2.1.4	Events . . . . .	4
2.2	Compared Parameters . . . . .	5
2.3	Aspect . . . . .	6
2.4	Star Slots . . . . .	9
2.4.1	Slot 3 . . . . .	9
2.4.2	Slot 4 . . . . .	10
2.4.3	Slot 5 . . . . .	11
2.4.4	Slot 6 . . . . .	12
2.4.5	Slot 7 . . . . .	13
2.5	FID Slots . . . . .	14
2.5.1	Slot 0 . . . . .	14
2.5.2	Slot 1 . . . . .	15
2.5.3	Slot 2 . . . . .	16
<b>3</b>	<b>Point Sources</b>	<b>17</b>
<b>A</b>	<b>Summary</b>	<b>18</b>
A.1	Status . . . . .	18
A.2	Comments . . . . .	18

# 1 Front

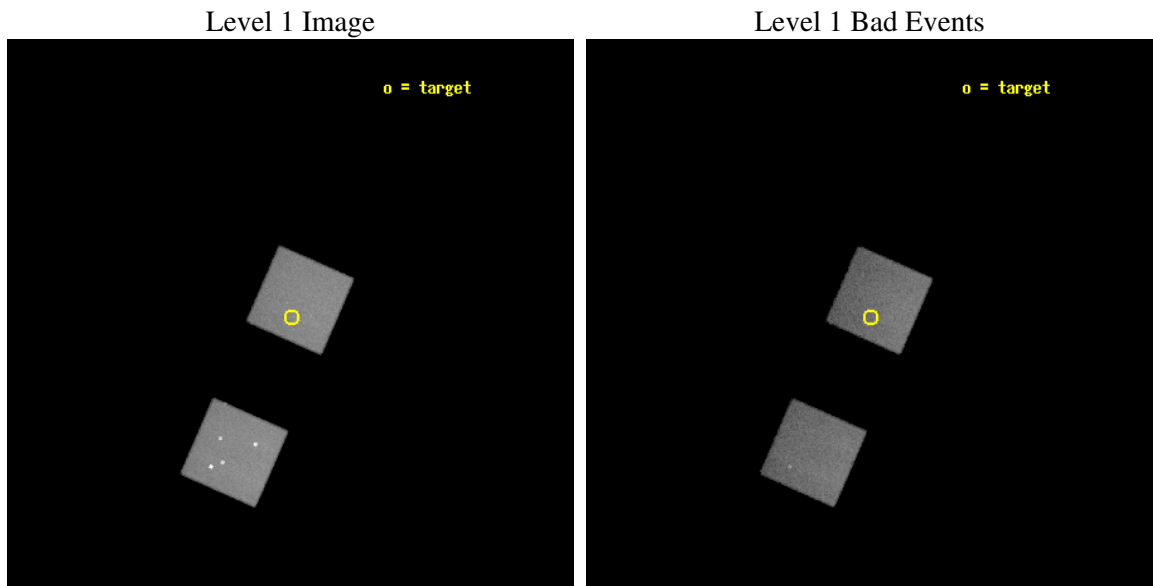
seq_num	500499
obs_id	5246
title	SN 2003jd; A GRB-like hypernova
observer	Dr. Darach Watson
object	SN 2003jd
dtcycle	0
cycle	P
ra_targ	350.264167
dec_targ	-4.895972
ra_nom	350.26643008438
dec_nom	-4.9053594317058
roll_nom	293.64001496436
revision	2
ontime	25509.0
livetime	25164.746271013
ontime5	25509.0
ontime7	25509.0
l2events	226243



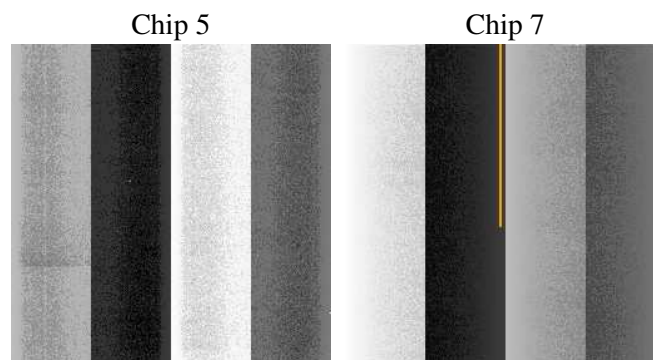
## 2 OBI

### 2.1 OBI

#### 2.1.1 Images



#### 2.1.2 Bias



### 2.1.3 Parameters

obi_num	0
ascdsver	7.6.8
caldsver	3.2.2
date	2006-06-30T11:25:22
revision	2

sched_exp_time	25000.000000
ontime	25514.060476124
ontime5	25514.060476124
ontime7	25514.060476124
l1events	503077

### 2.1.4 Events

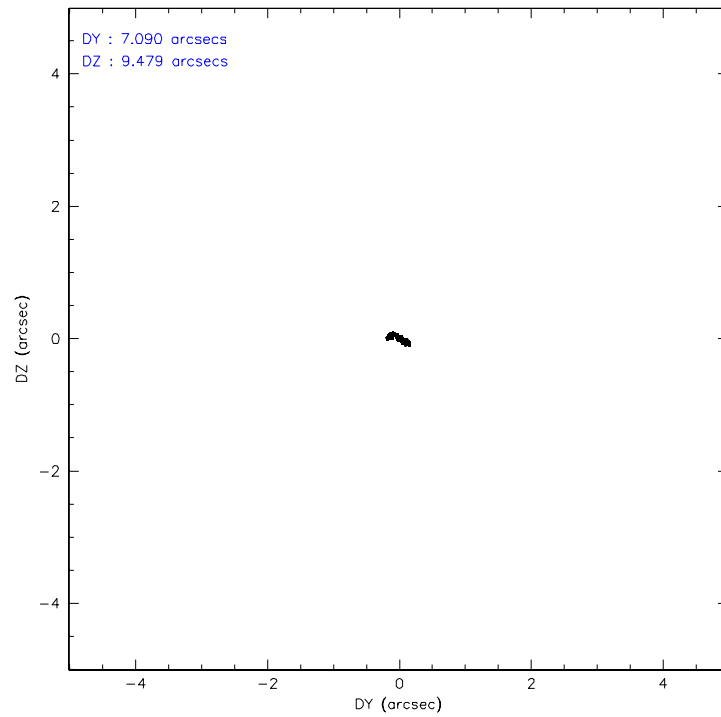
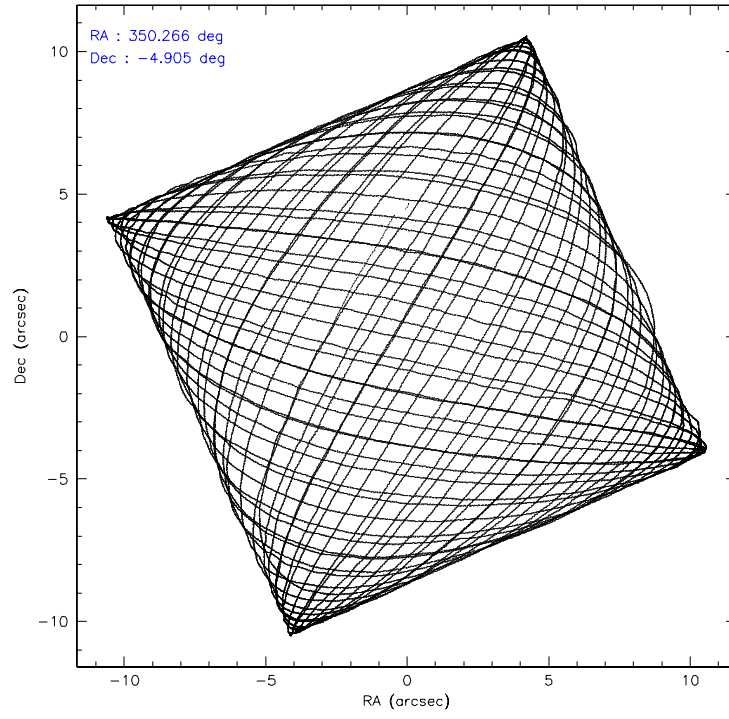
	<b>ccd 5</b>	<b>ccd 7</b>
level 1 events	269718	233359
rejected events	126437	126270
rejected %	46%	54%

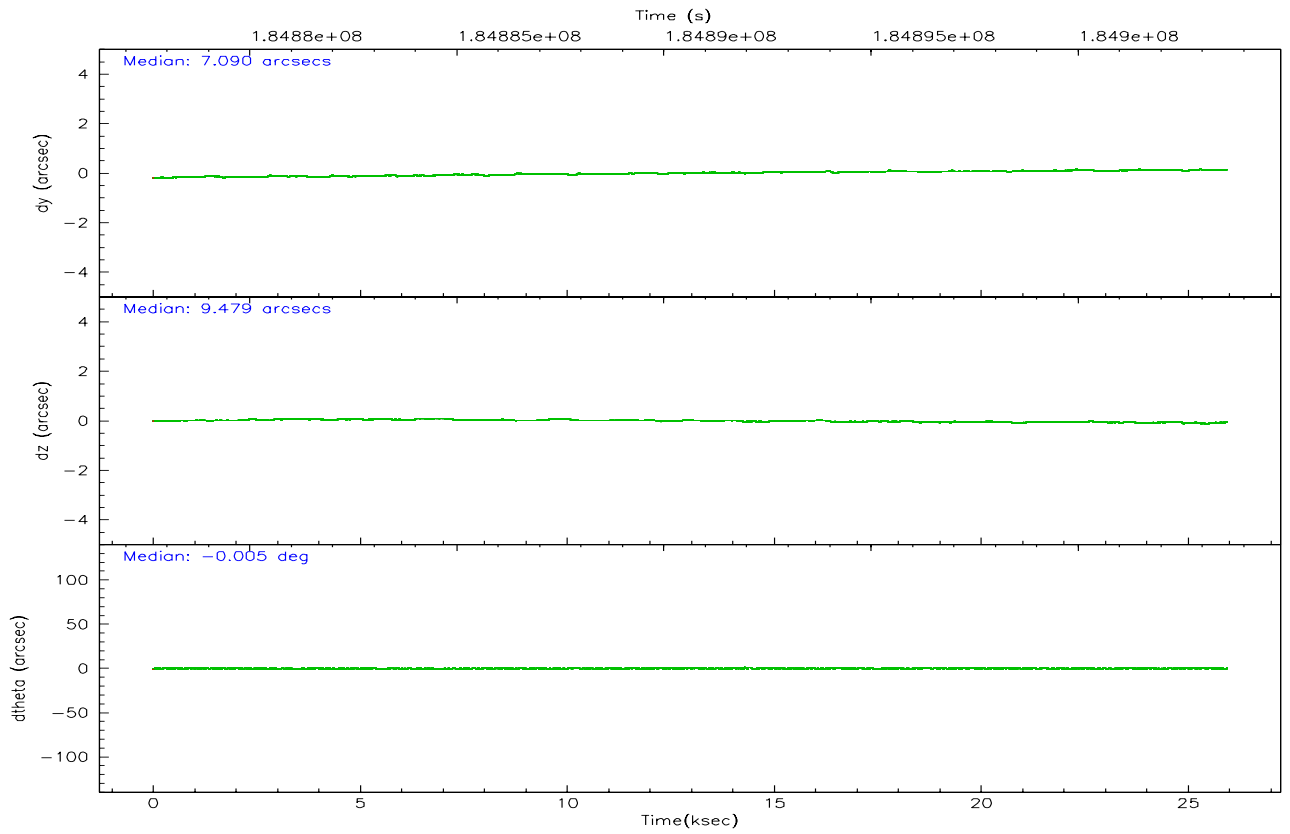
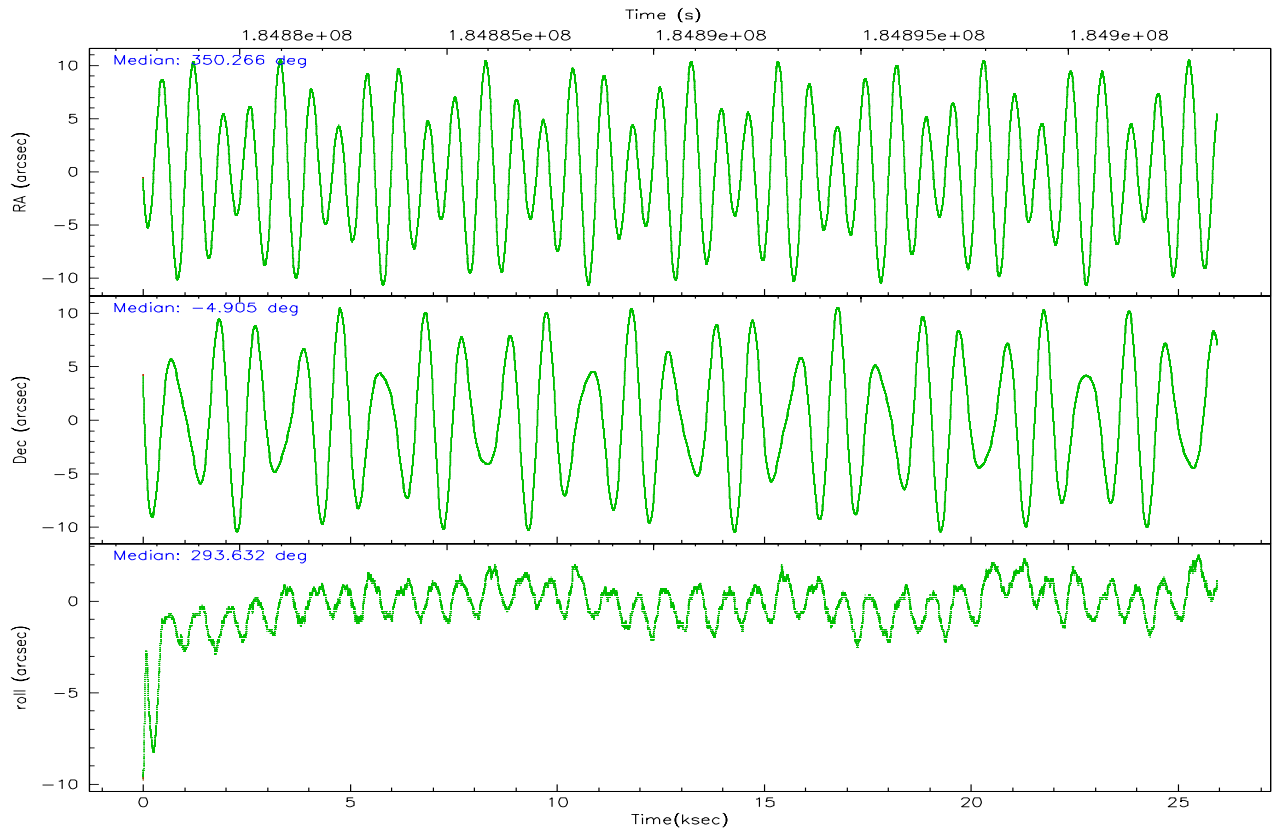
	<b>ccd 5</b>	<b>ccd 7</b>
grade 0 events	20019	7861
	7%	3%
grade 1 events	538	114
	0%	0%
grade 2 events	47270	25227
	17%	10%
grade 3 events	3485	5804
	1%	2%
grade 4 events	3327	5583
	1%	2%
grade 5 events	11115	13506
	4%	5%
grade 6 events	69198	62629
	25%	26%
grade 7 events	114766	112635
	42%	48%

## 2.2 Compared Parameters

Parameter	Planned	Actual	Parameter	Planned	Actual
Instrument	ACIS	ACIS	Obspar format version number	6	6
Detector	ACIS-57	ACIS-57	Obspar file type	PREDICTED	ACTUAL
Grating	NONE	NONE	Obspar update status	NONE	UPDATED
Data mode	VFAINT	VFAINT	On-chip summing requested	N	N
Observation mode	POINTING	POINTING	Subarray requested	NONE	NONE
Pointing RA	350.244214	350.2664300843765	Alternating exposures requested	N	N
Pointing Dec	-4.889524	-4.905359431705837	Primary exposure time	0.000000	3
Pointing Roll	293.481490	293.6400149643649			
SIM focus pos (mm)	-0.684267	-0.6828225247311905			
SIM defocus (mm)	0	0.001444936568705701			
SIM translation stage pos (mm)	-190.132523	-190.1400660498719			
SIM translation stage offset (mm)	0	0.00754346686406393			
Observation start time	184878603.184000	184877264.35592			
Observation start date	2003-11-10T19:08:59	2003-11-10T18:47:44			
Observation end time	184903603.184000	184904649.79461			
Observation end date	2003-11-11T02:05:39	2003-11-11T02:24:09			
Read mode	TIMED	TIMED			

## 2.3 Aspect





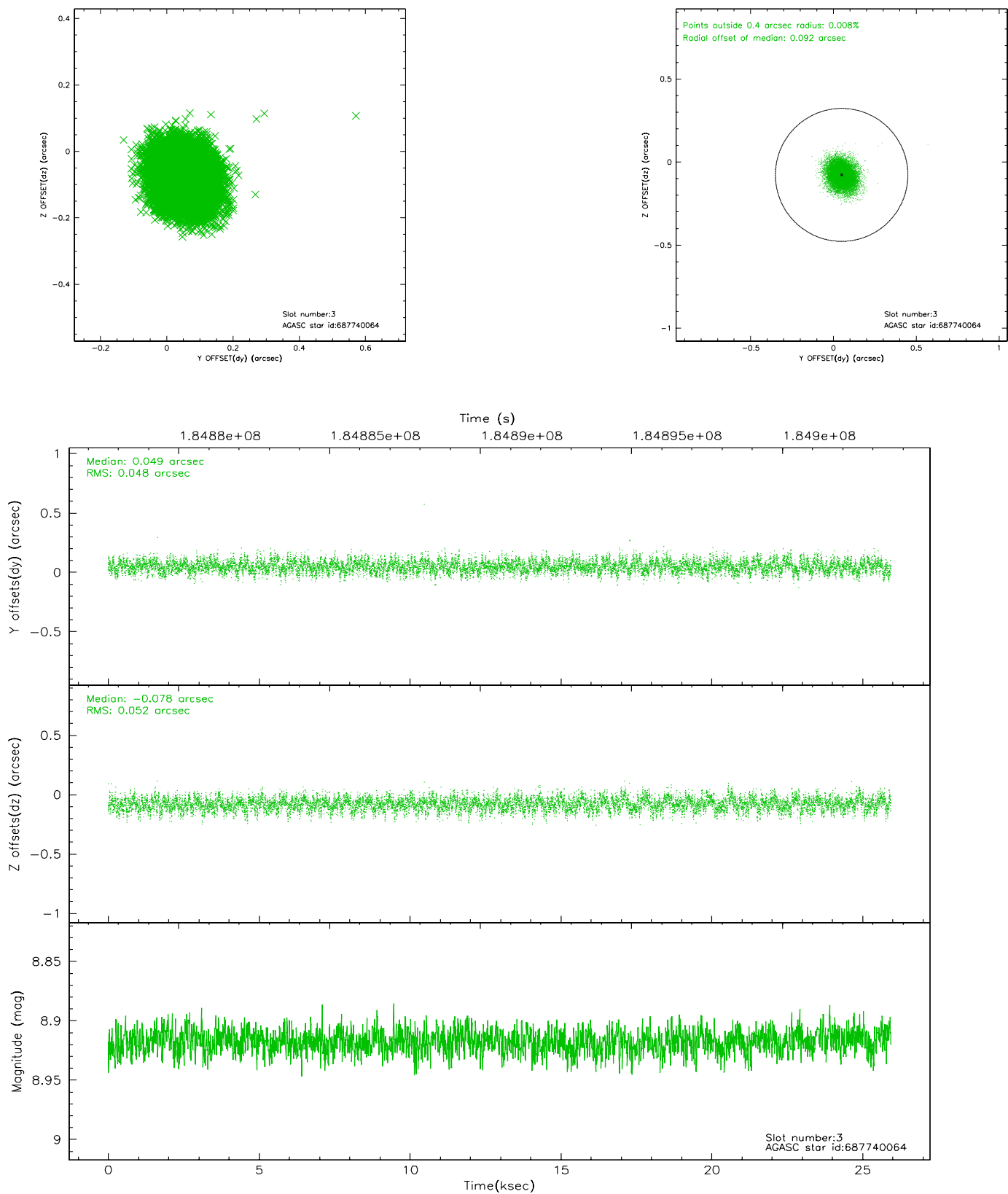
### Slot Statistics

slot	status	id	mag	n_pts	med_dy	med_dz	dr1	dr2	ra	dec	mean_y	mean_z
0	FID	ACIS-S-2	7.10	6328	-0.025	0.005	0.007	0.012	0.000000	0.000000	-759.84	-1730.71
1	FID	ACIS-S-4	7.20	6328	0.015	0.011	0.006	0.011	0.000000	0.000000	2153.40	177.70
2	FID	ACIS-S-5	7.23	6328	-0.022	-0.007	0.009	0.015	0.000000	0.000000	-1812.56	171.43
3	GUIDE	687740064	8.92	12649	0.049	-0.078	0.075	0.121	350.270836	-4.770901	-353.12	257.95
4	GUIDE	687742552	9.38	12587	-0.076	0.076	0.095	0.147	350.686451	-4.348161	-1154.73	2232.52
5	GUIDE	687743592	7.20	12655	-0.070	0.010	0.064	0.104	350.339754	-4.672765	-579.07	625.52
6	GUIDE	688004016	8.71	12654	-0.043	-0.113	0.080	0.124	349.711754	-5.099605	-65.99	-2052.61
7	GUIDE	688133432	9.36	12641	0.134	0.106	0.092	0.147	350.706750	-5.036390	1146.61	1311.03

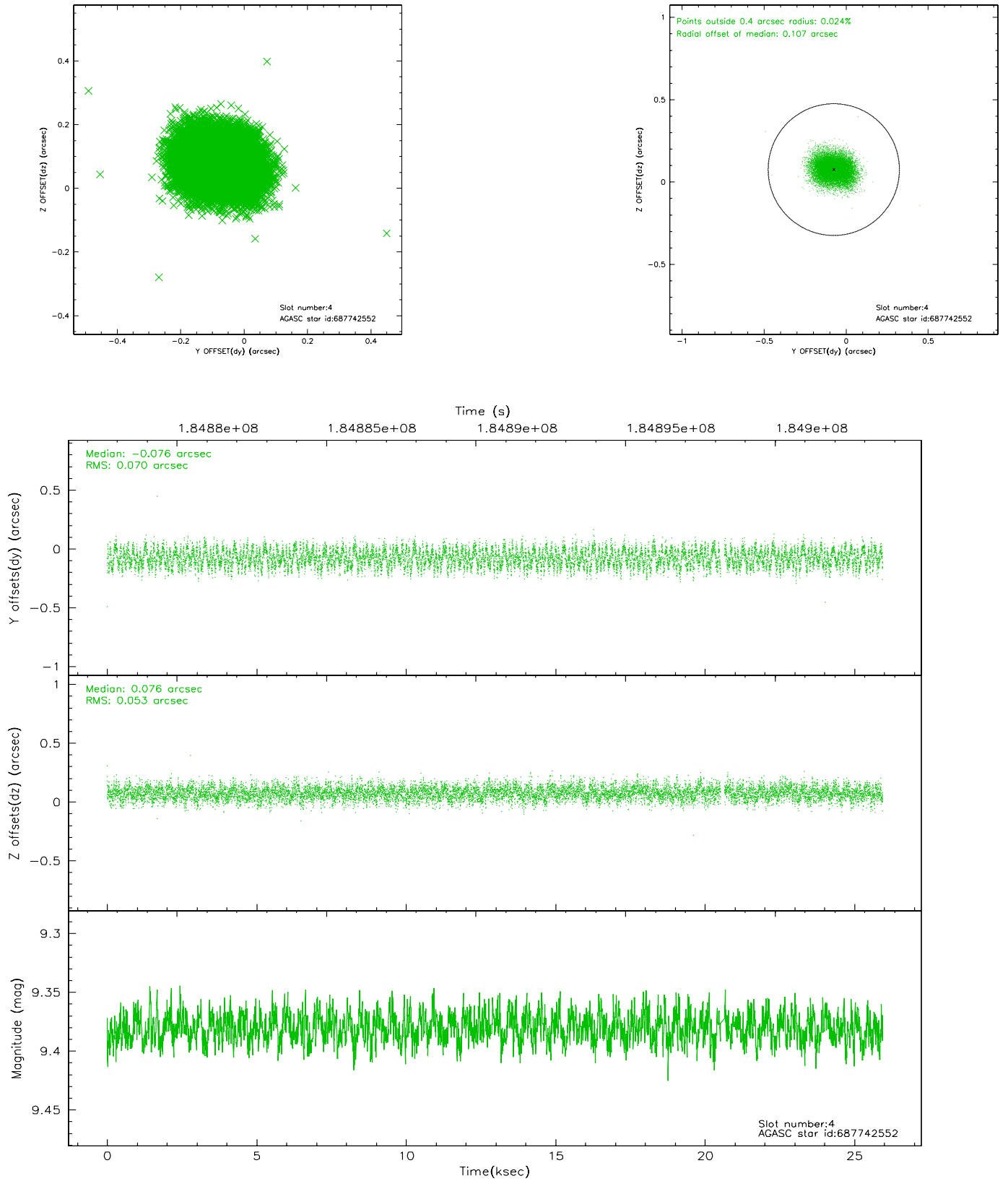


## 2.4 Star Slots

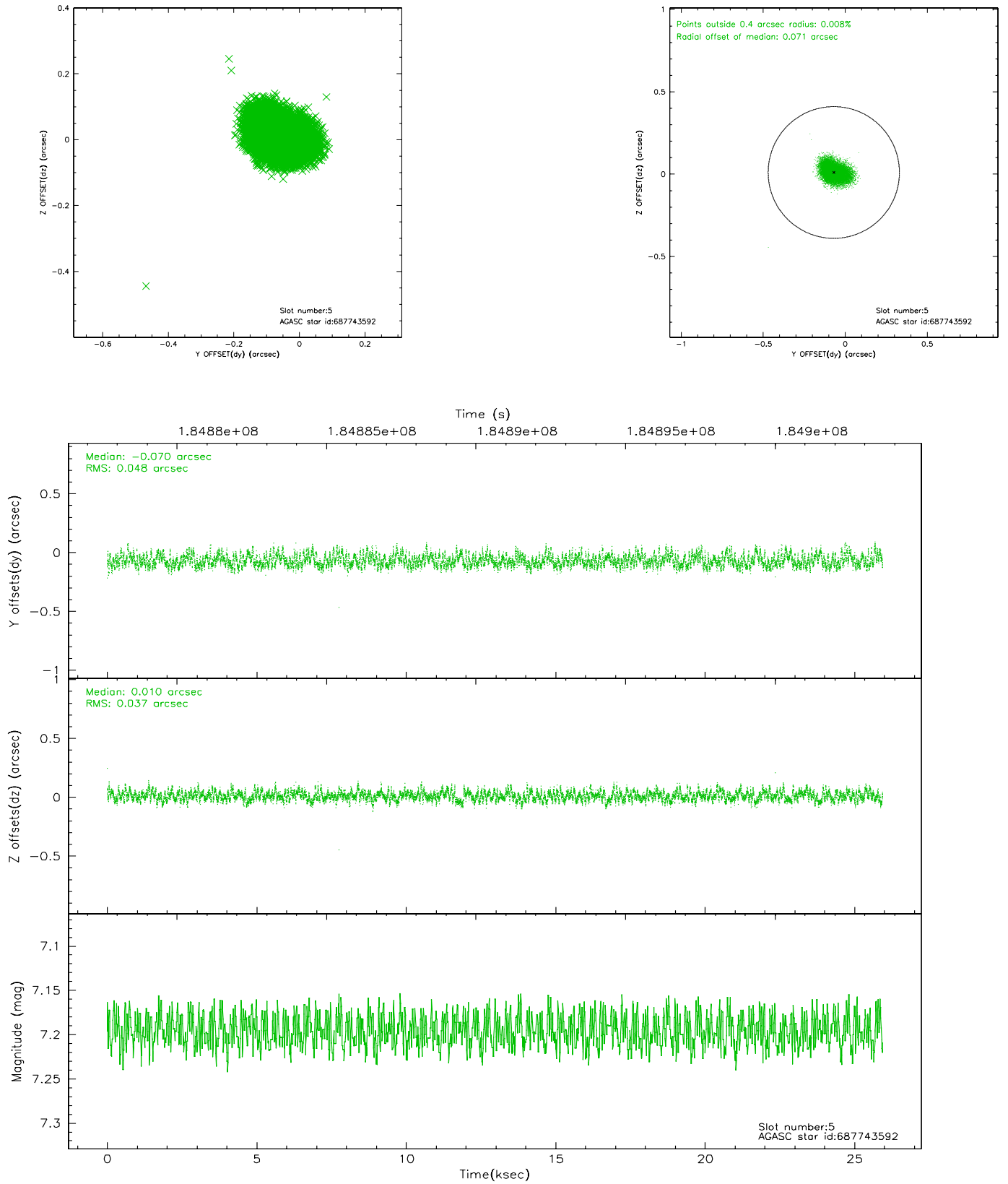
### 2.4.1 Slot 3



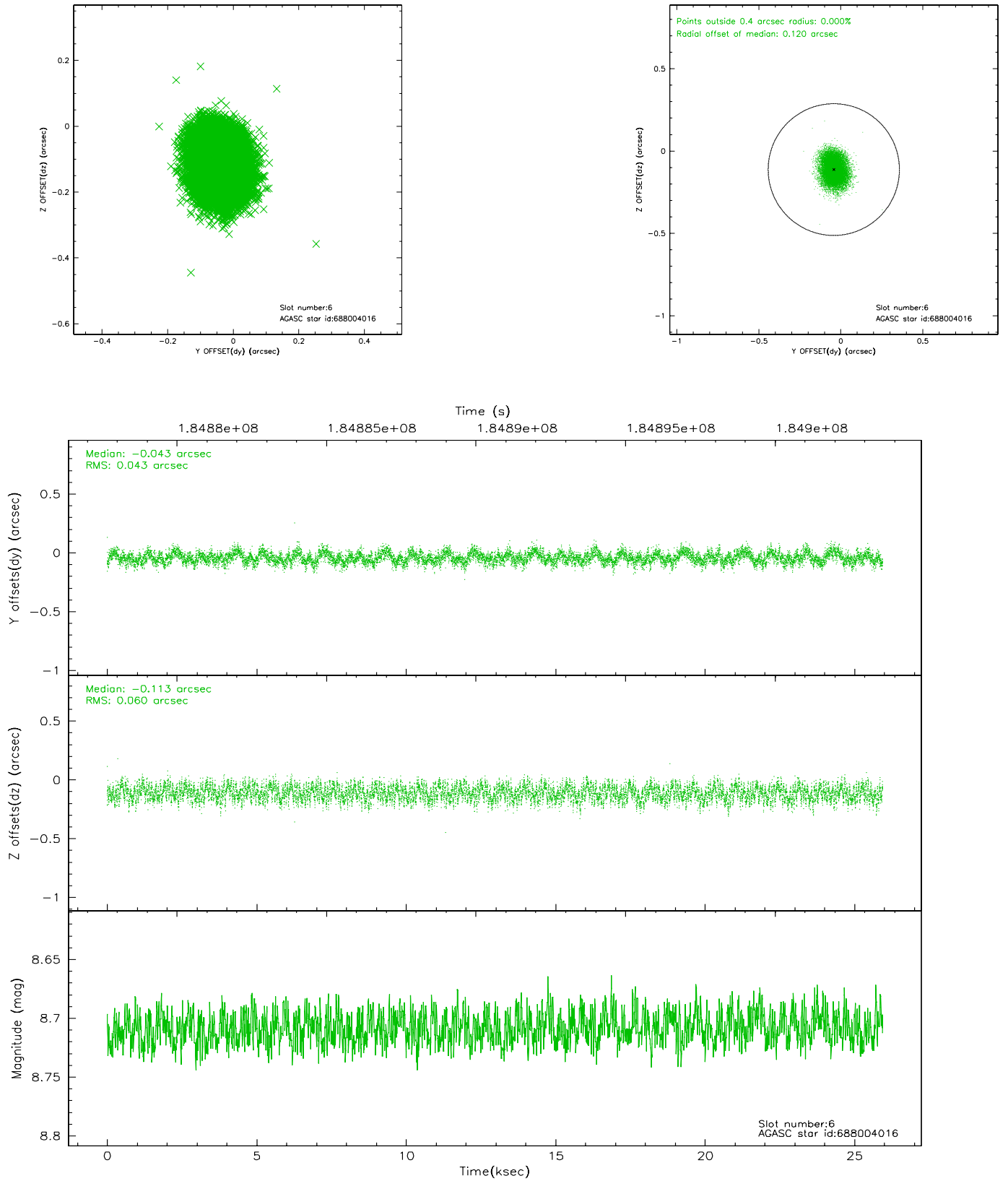
## 2.4.2 Slot 4



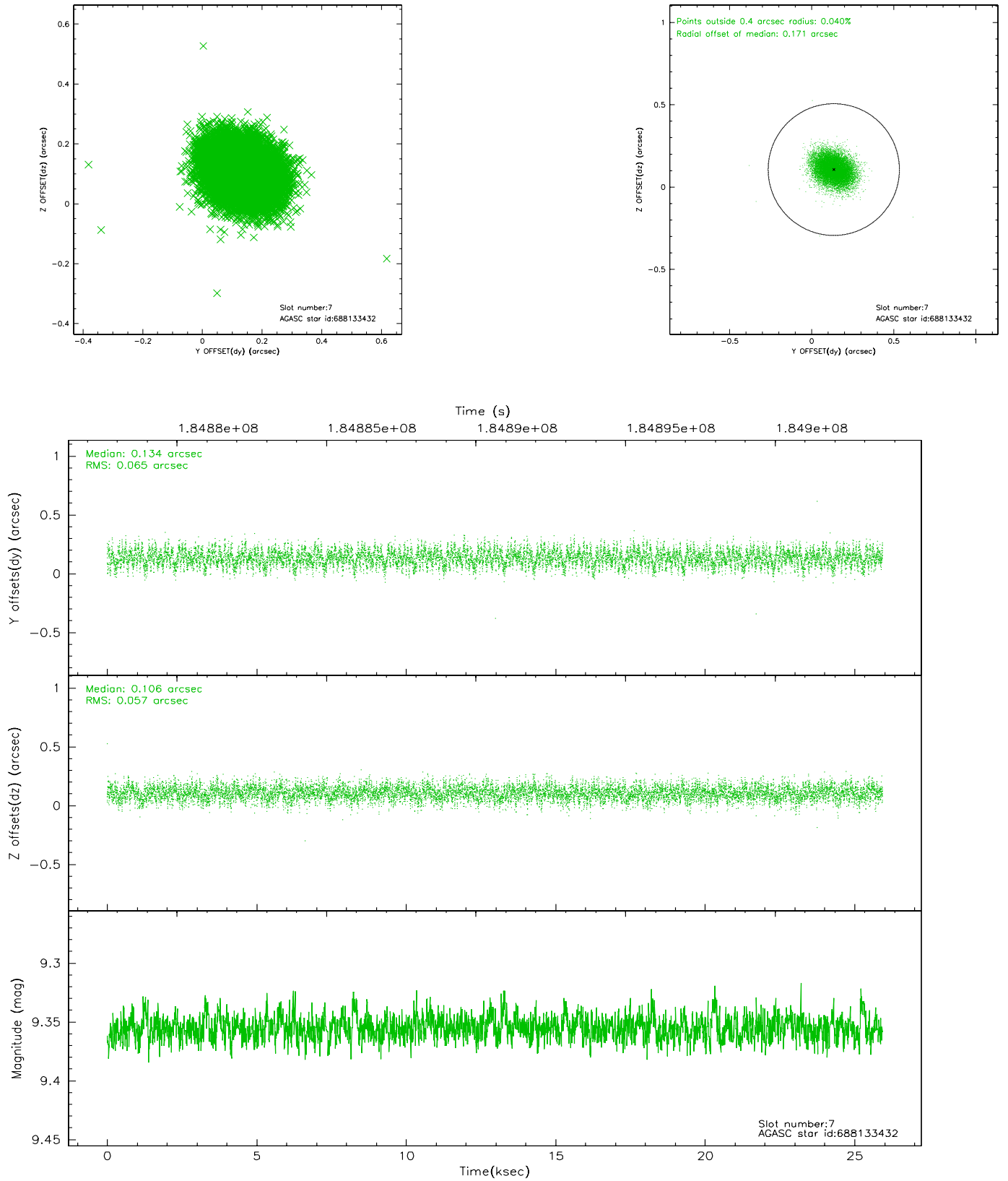
### 2.4.3 Slot 5



## 2.4.4 Slot 6

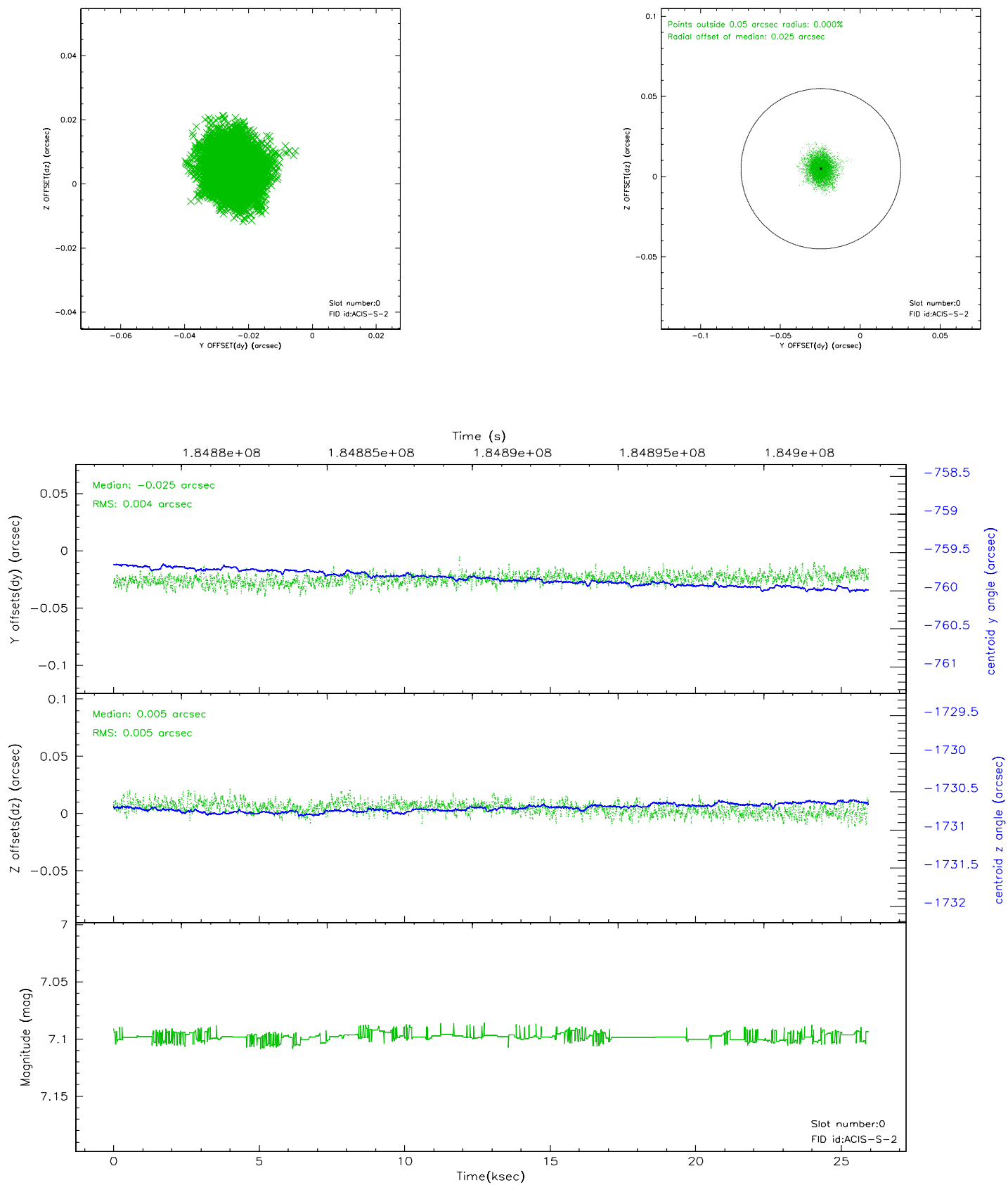


## 2.4.5 Slot 7

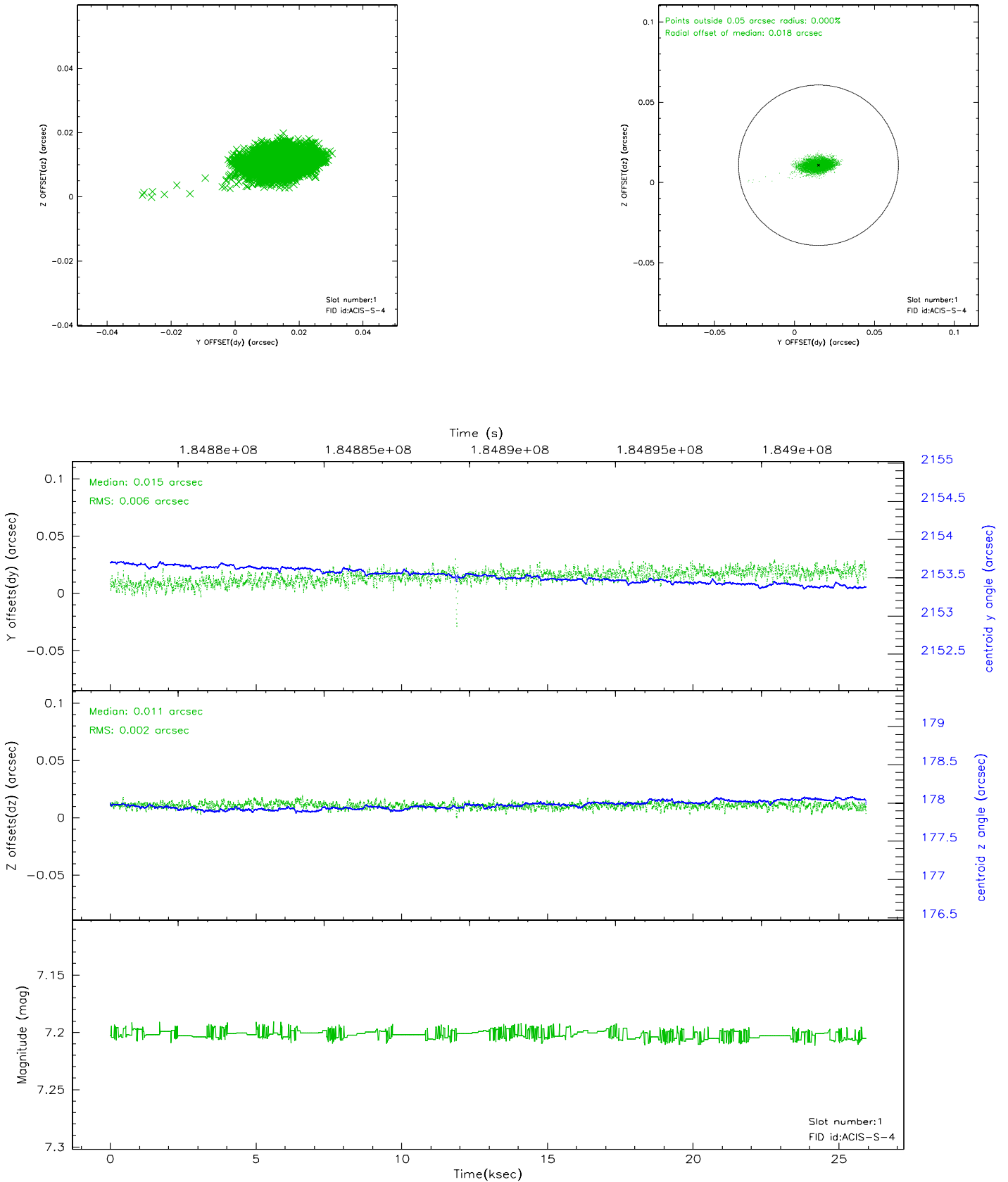


## 2.5 FID Slots

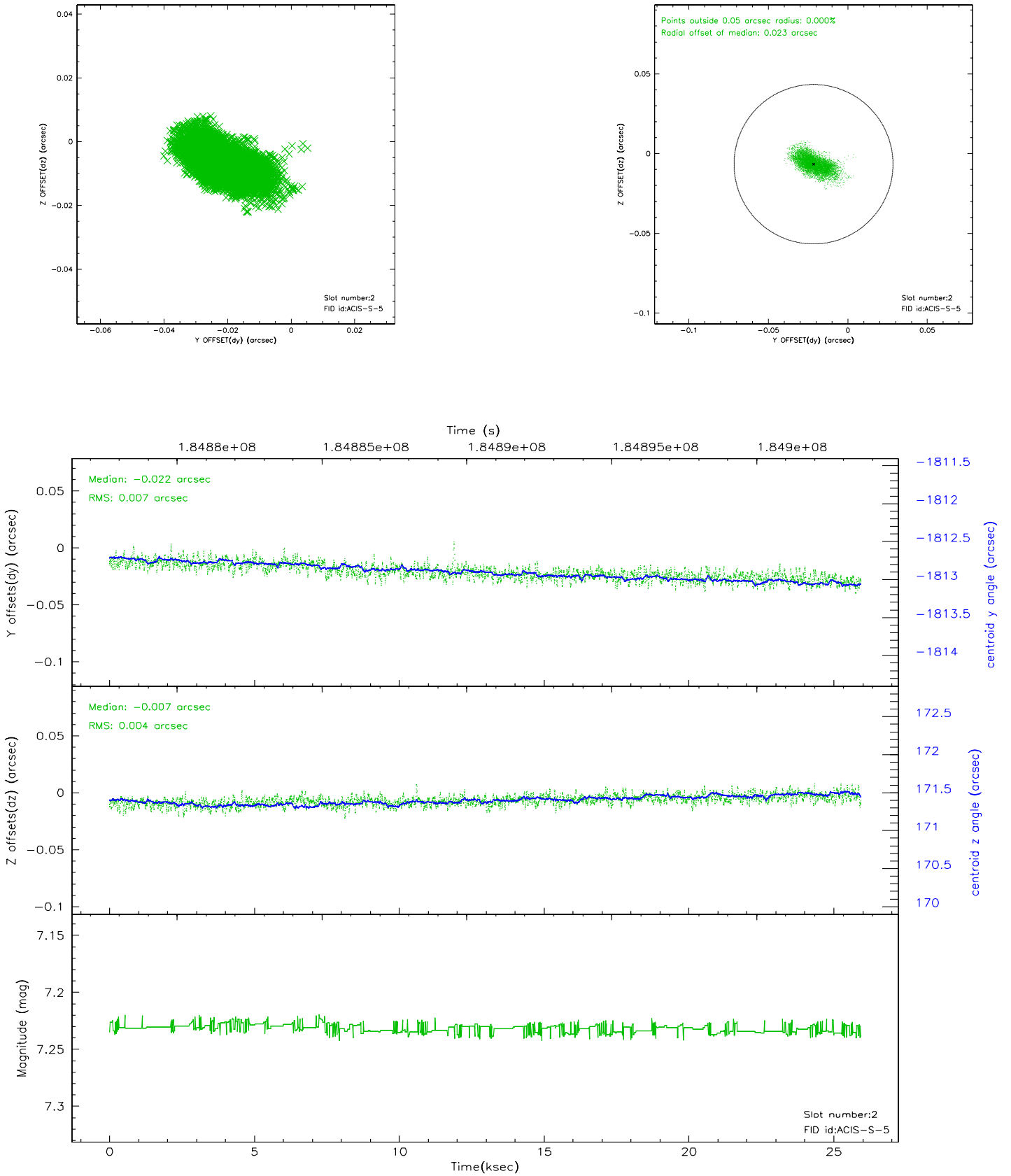
### 2.5.1 Slot 0



## 2.5.2 Slot 1

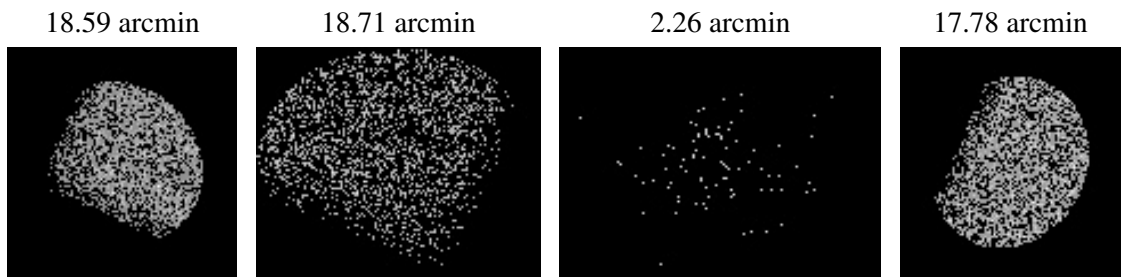


### 2.5.3 Slot 2





### 3 Point Sources



## A Summary

### A.1 Status

V&V Scientist	Beth Sundheim
V&V Date (YYYY-MM-DD)	2006.06.30
V&V Edition	1
V&V Disposition and Status	OK
V&V Charge Time	25.509

### A.2 Comments