

V&V Reference Report

L2 ASCDS Version : 7.6.8

Observation 4417 - L2 Version 001
Chandra X-Ray Center

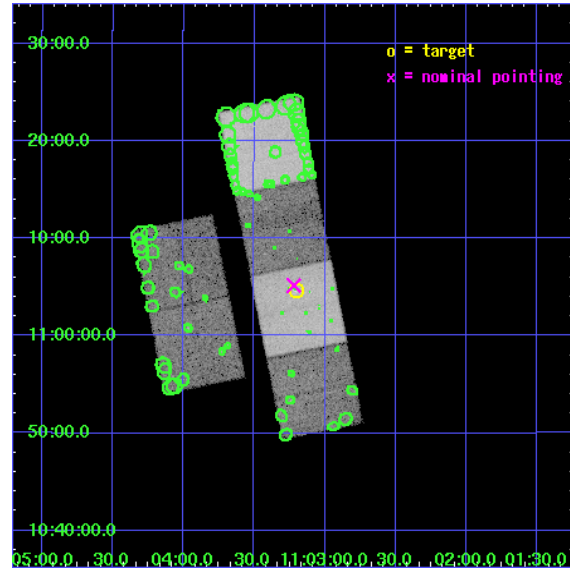
L2 Processing Date : Jul 20 2006

Contents

1	Front	2
2	OBI	3
2.1	OBI	3
2.1.1	Images	3
2.1.2	Bias	3
2.1.3	Parameters	4
2.1.4	Events	4
2.2	Compared Parameters	5
2.3	Aspect	6
2.4	Star Slots	9
2.4.1	Slot 3	9
2.4.2	Slot 4	10
2.4.3	Slot 5	11
2.4.4	Slot 6	12
2.4.5	Slot 7	13
2.5	FID Slots	14
2.5.1	Slot 0	14
2.5.2	Slot 1	15
2.5.3	Slot 2	16
3	Point Sources	17
A	Summary	18
A.1	Status	18
A.2	Comments	18

1 Front

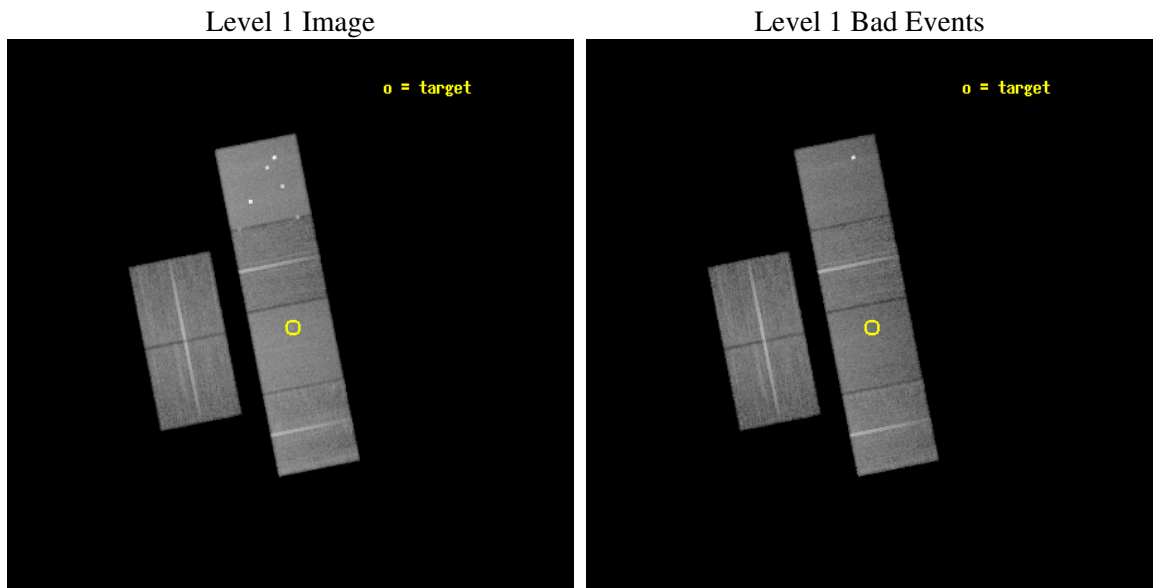
seq_num	500409
obs_id	4417
title	EXPLORING THE GRB-SUPERNOVA CONNECTION VIA SN2003L
observer	Prof. Shrinivas Kulkarni
object	SN2003L
dtcycle	0
cycle	P
ra_targ	165.80125
dec_targ	11.077222
ra_nom	165.80482664955
dec_nom	11.086190029596
roll_nom	78.713949460841
revision	3
ontime	30415.999886692
livetime	30030.85418181
ontime2	30415.999886692
ontime3	30415.999886692
ontime5	30415.999886692
ontime6	30412.758926332
ontime7	30415.999886692
ontime8	30415.999886692
l2events	297758



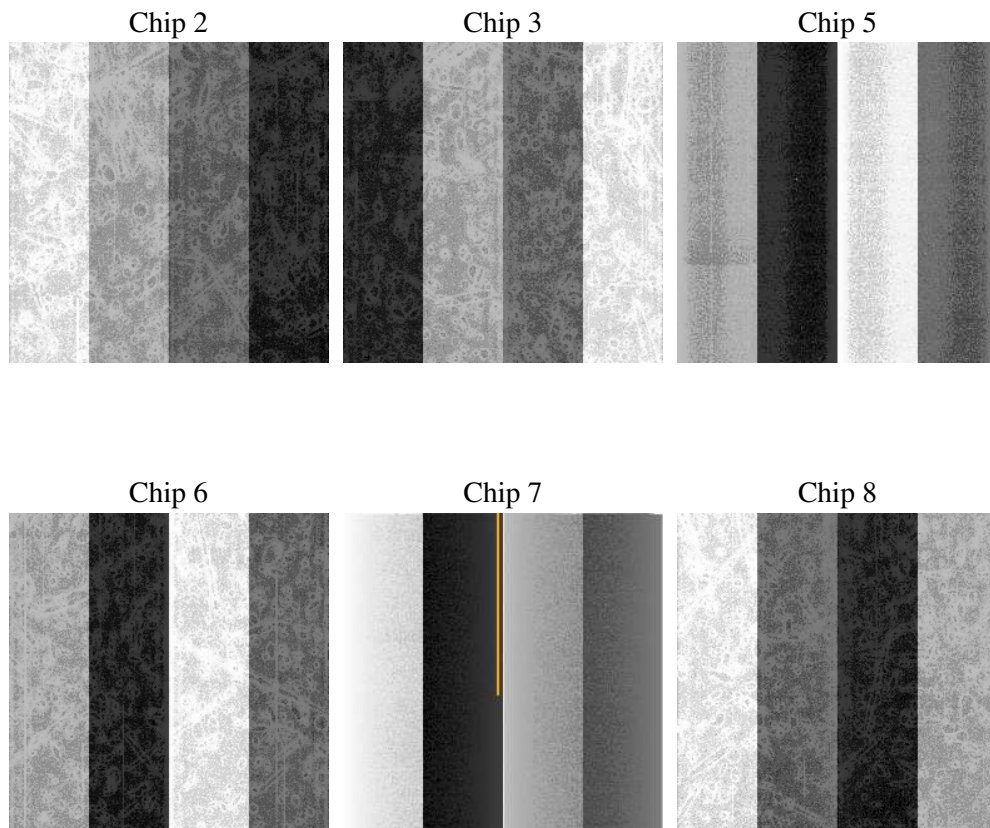
2 OBI

2.1 OBI

2.1.1 Images



2.1.2 Bias



2.1.3 Parameters

obi_num	0
ascdsver	7.6.8
caldsver	3.2.2
date	2006-07-21T00:40:03
revision	3

sched_exp_time	30300.000000
ontime	30549.733852983
ontime2	30549.733852983
ontime3	30549.733852983
ontime5	30549.733852983
ontime6	30546.492892623
ontime7	30549.733852983
ontime8	30549.733852983
l1events	1427664

2.1.4 Events

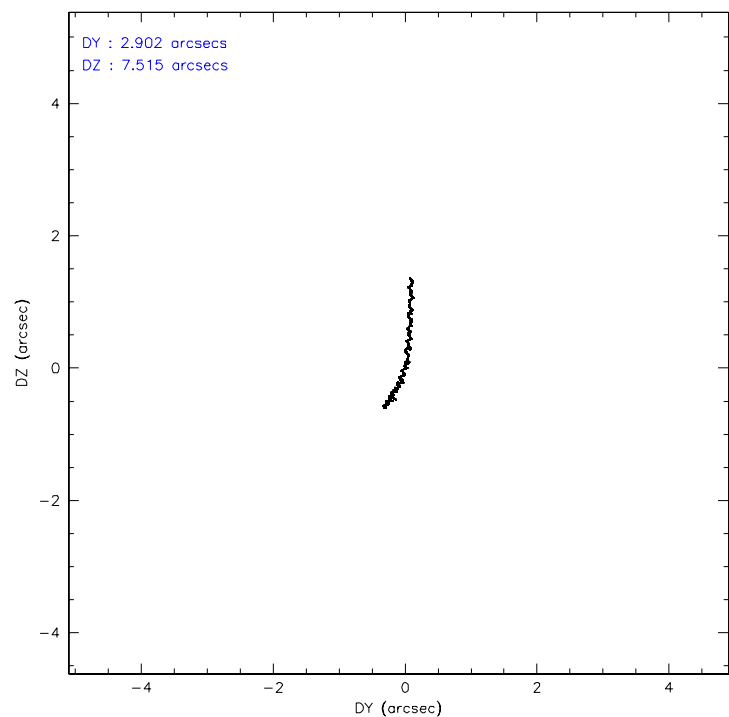
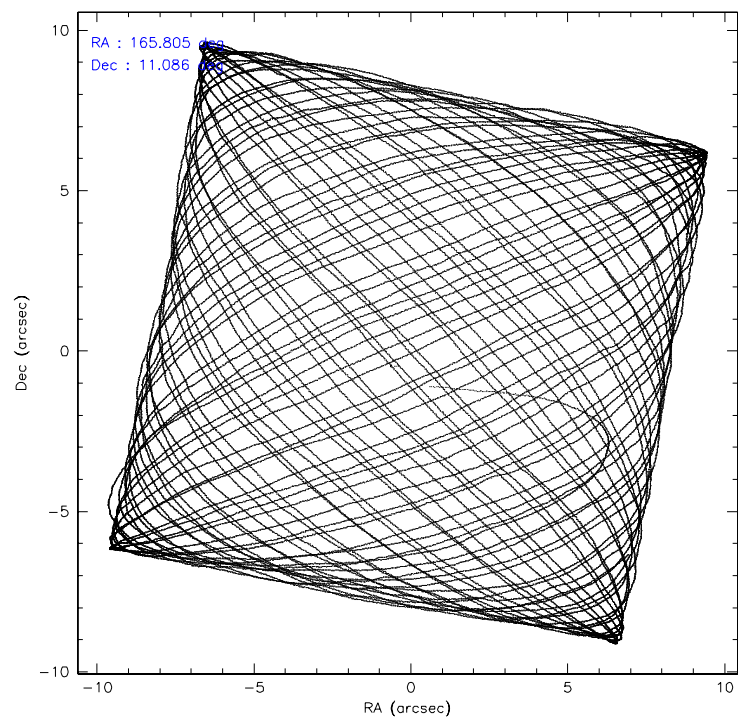
	ccd 2	ccd 3	ccd 5	ccd 6	ccd 7	ccd 8
level 1 events	204083	194868	309277	200575	263930	254931
rejected events	181674	172358	169269	176989	163901	202501
rejected %	89%	88%	54%	88%	62%	79%

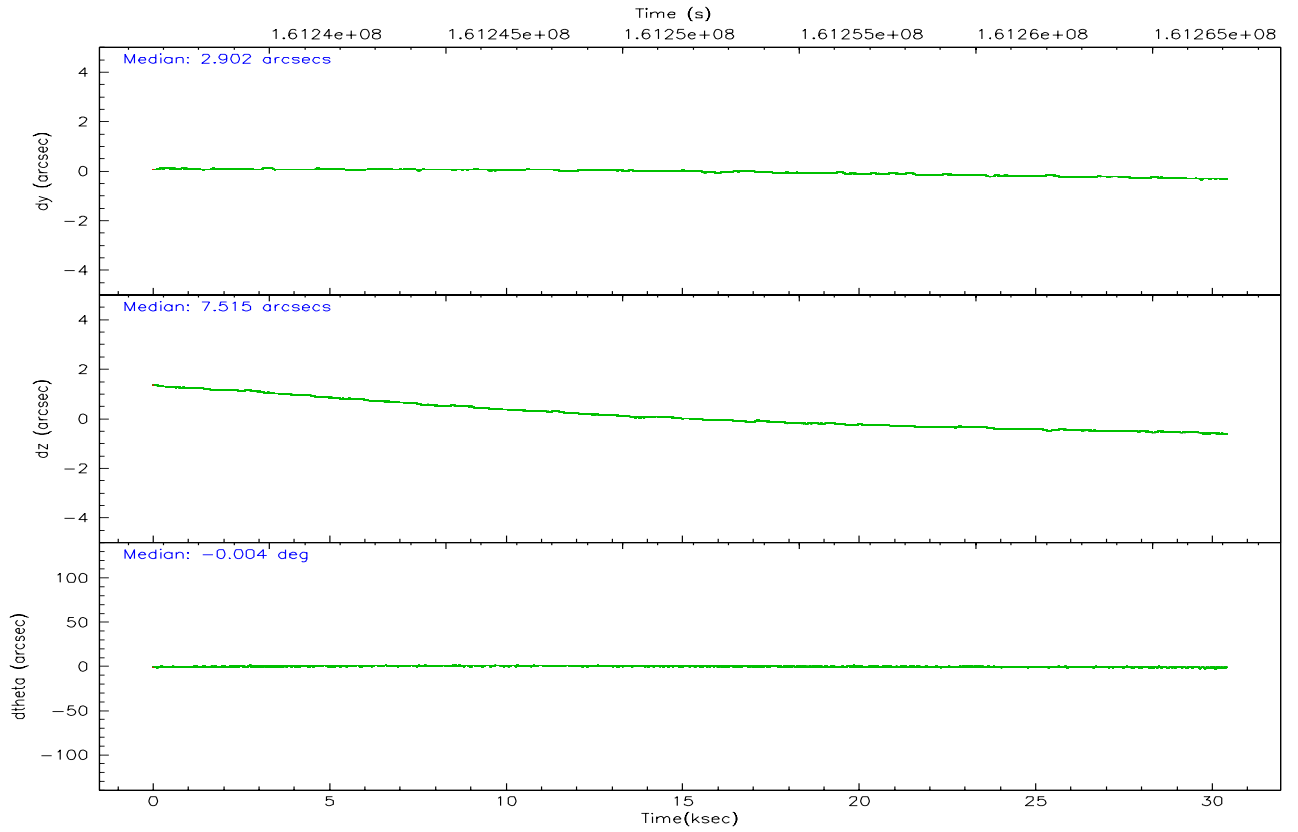
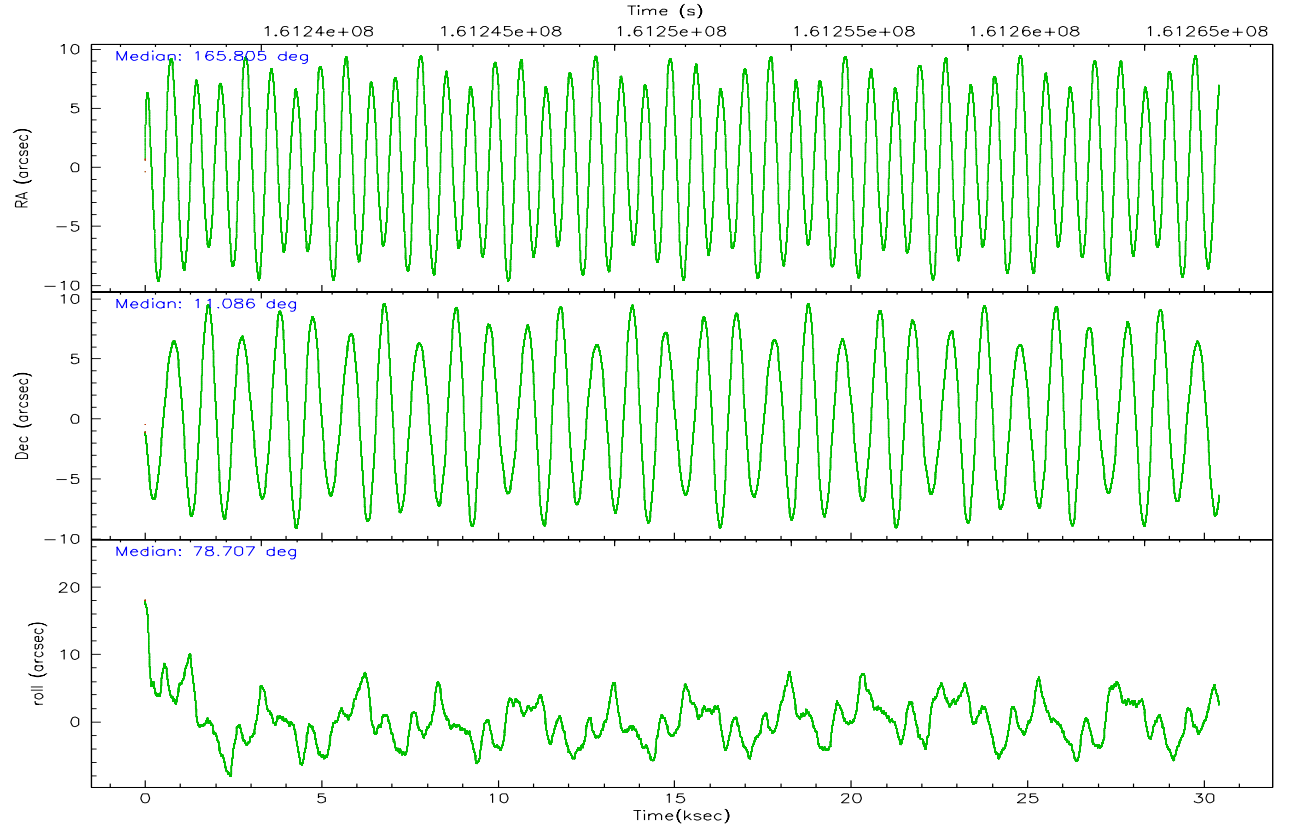
	ccd 2	ccd 3	ccd 5	ccd 6	ccd 7	ccd 8
grade 0 events	9760	9968	21789	9504	5898	16432
	4%	5%	7%	4%	2%	6%
grade 1 events	123	90	260	115	156	147
	0%	0%	0%	0%	0%	0%
grade 2 events	4643	4239	40585	4828	24666	11394
	2%	2%	13%	2%	9%	4%
grade 3 events	2184	2239	3142	2336	5022	5675
	1%	1%	1%	1%	1%	2%
grade 4 events	2239	2169	2698	2293	5039	5251
	1%	1%	0%	1%	1%	2%
grade 5 events	7594	8407	15684	8889	17486	11459
	3%	4%	5%	4%	6%	4%
grade 6 events	3685	3995	72407	4729	59839	13895
	1%	2%	23%	2%	22%	5%
grade 7 events	173855	163761	152712	167881	145824	190678
	85%	84%	49%	83%	55%	74%

2.2 Compared Parameters

Parameter	Planned	Actual	Parameter	Planned	Actual
Instrument	ACIS	ACIS	Obspar format version number	6	6
Detector	ACIS-235678	ACIS-235678	Obspar file type	PREDICTED	ACTUAL
Grating	NONE	NONE	Obspar update status	NONE	UPDATED
Data mode	FAINT	FAINT	On-chip summing requested	N	N
Observation mode	POINTING	POINTING	Subarray requested	NONE	NONE
Pointing RA	165.814101	165.8048266495535	Alternating exposures requested	N	N
Pointing Dec	11.060549	11.0861900295958	Primary exposure time	0.000000	3.2
Pointing Roll	78.555539	78.71394946084081			
SIM focus pos (mm)	-0.684267	-0.6828225247311905			
SIM defocus (mm)	0	0.001444936568705701			
SIM translation stage pos (mm)	-190.132523	-190.1400660498719			
SIM translation stage offset (mm)	0	0.00754346686406393			
Observation start time	161236827.184000	161235722.4001			
Observation start date	2003-02-10T03:59:23	2003-02-10T03:42:02			
Observation end time	161267127.184000	161267912.01396			
Observation end date	2003-02-10T12:24:23	2003-02-10T12:38:32			
Read mode	TIMED	TIMED			

2.3 Aspect



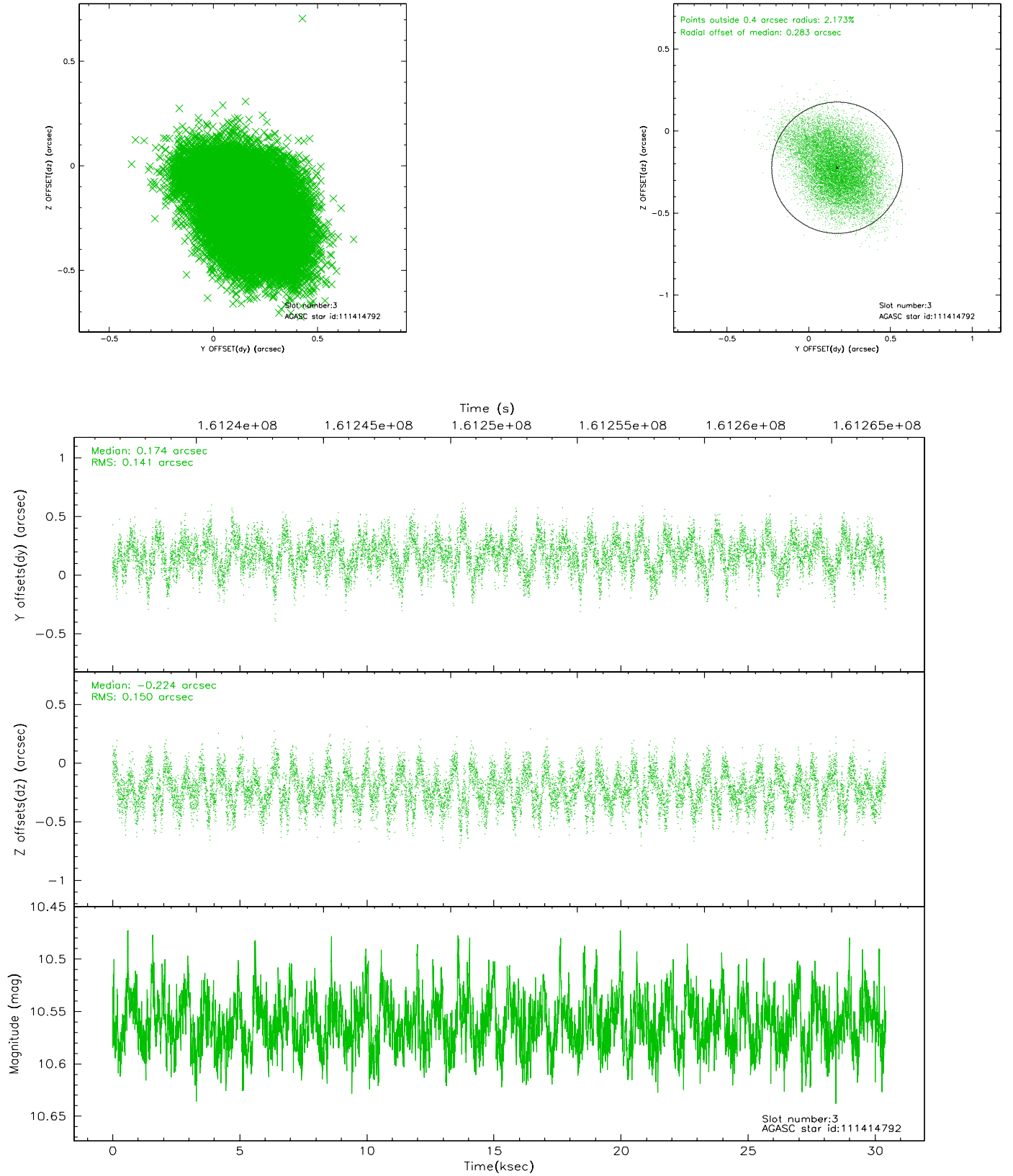


Slot Statistics

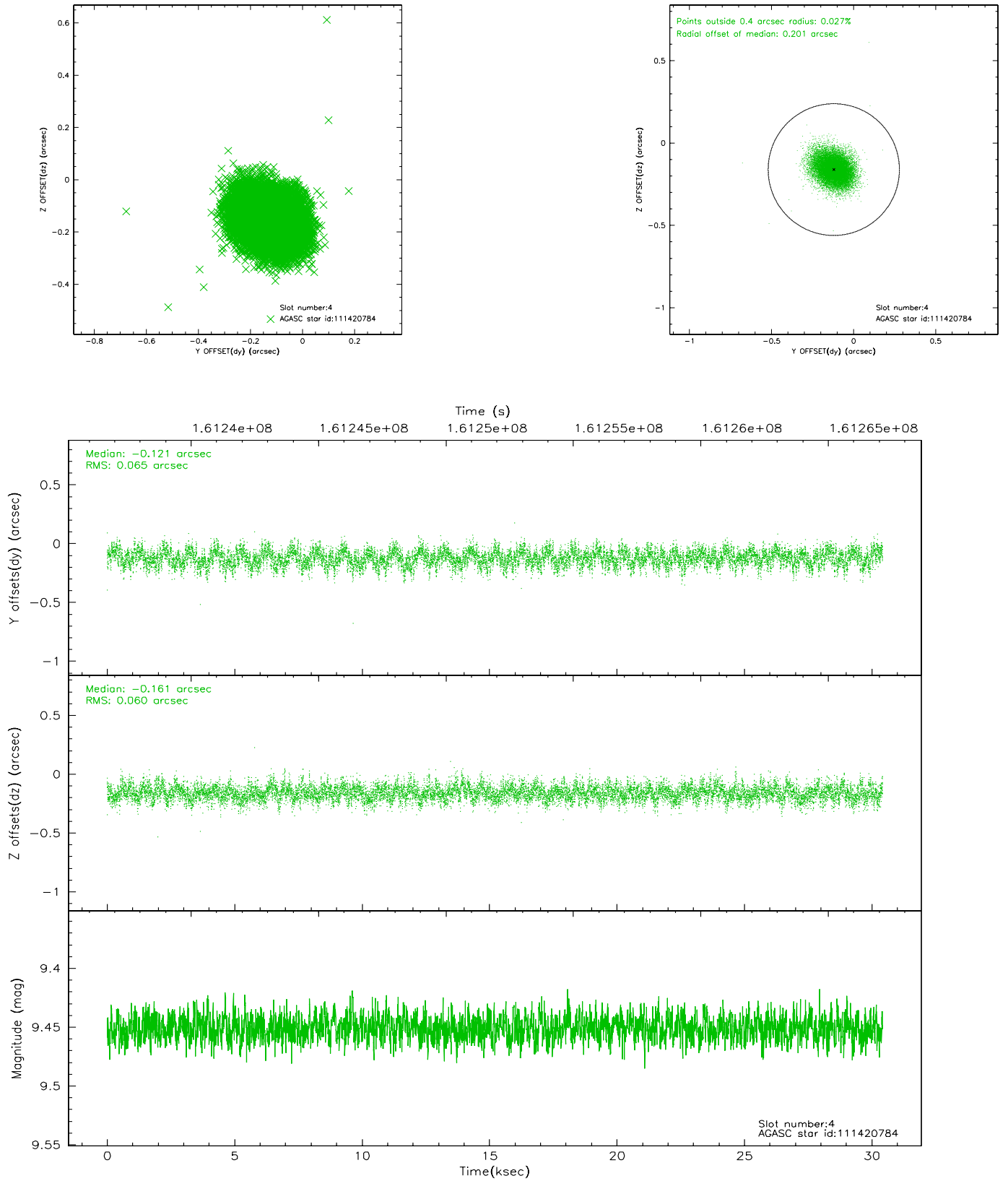
slot	status	id	mag	n_pts	med_dy	med_dz	dr1	dr2	ra	dec	mean_y	mean_z
0	FID	ACIS-S-2	7.11	7422	-0.010	0.014	0.010	0.016	0.000000	0.000000	-755.50	-1728.84
1	FID	ACIS-S-4	7.20	7421	-0.041	0.001	0.006	0.011	0.000000	0.000000	2157.71	179.57
2	FID	ACIS-S-5	7.24	7420	0.019	-0.006	0.010	0.018	0.000000	0.000000	-1808.23	173.30
3	GUIDE	111414792	10.56	14819	0.174	-0.224	0.220	0.356	165.321853	10.787005	-1308.85	1510.75
4	GUIDE	111420784	9.45	14837	-0.121	-0.161	0.094	0.153	165.354067	11.539798	1370.25	1933.31
5	GUIDE	111545144	8.56	14836	-0.032	0.148	0.087	0.135	166.335397	10.552556	-1424.09	-2170.62
6	GUIDE	111546720	10.50	14831	-0.094	0.272	0.150	0.253	166.494839	11.301119	1328.91	-2182.59
7	GUIDE	111546168	9.79	14811	0.080	-0.034	0.153	0.245	166.269202	11.246606	977.22	-1441.99

2.4 Star Slots

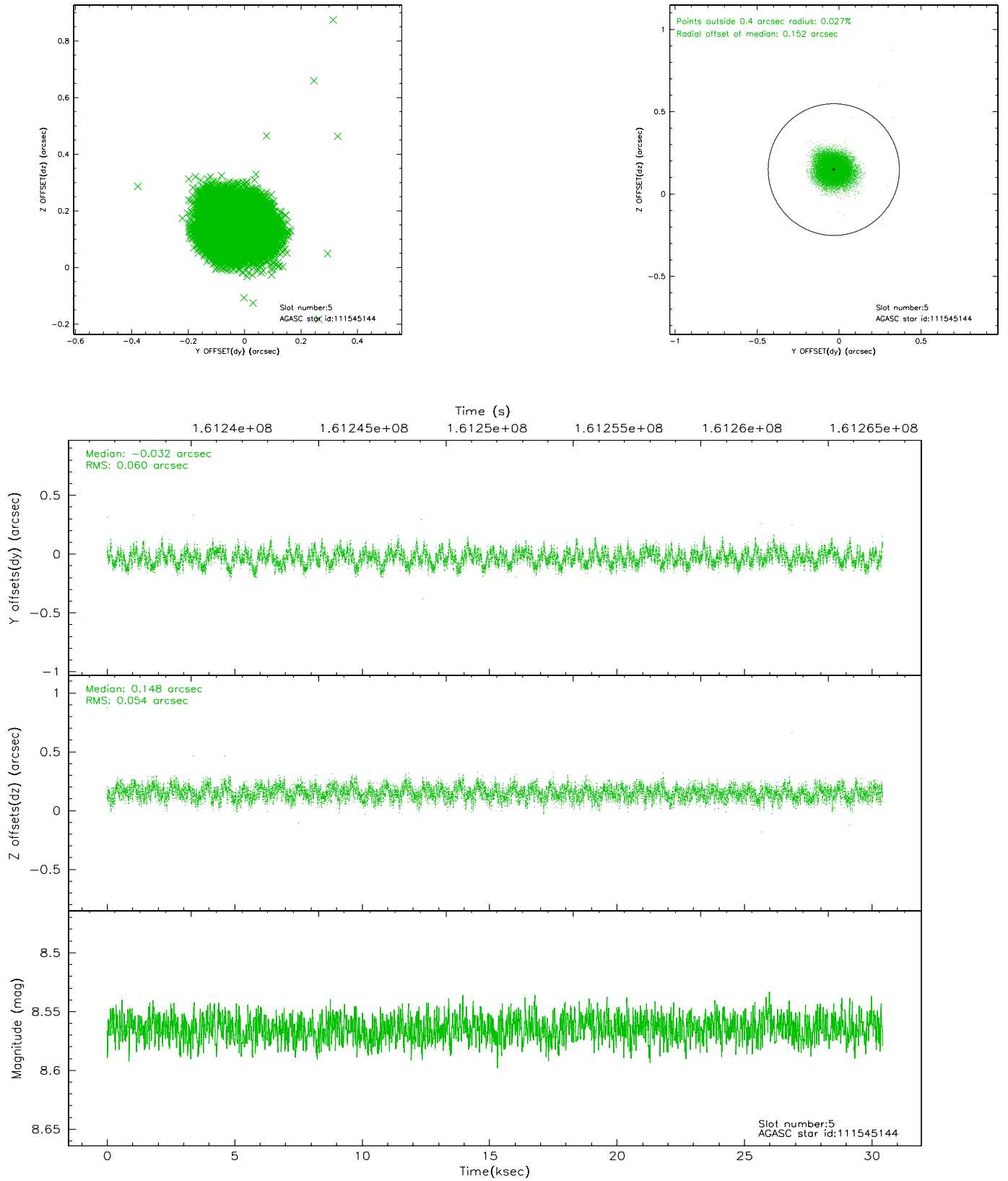
2.4.1 Slot 3



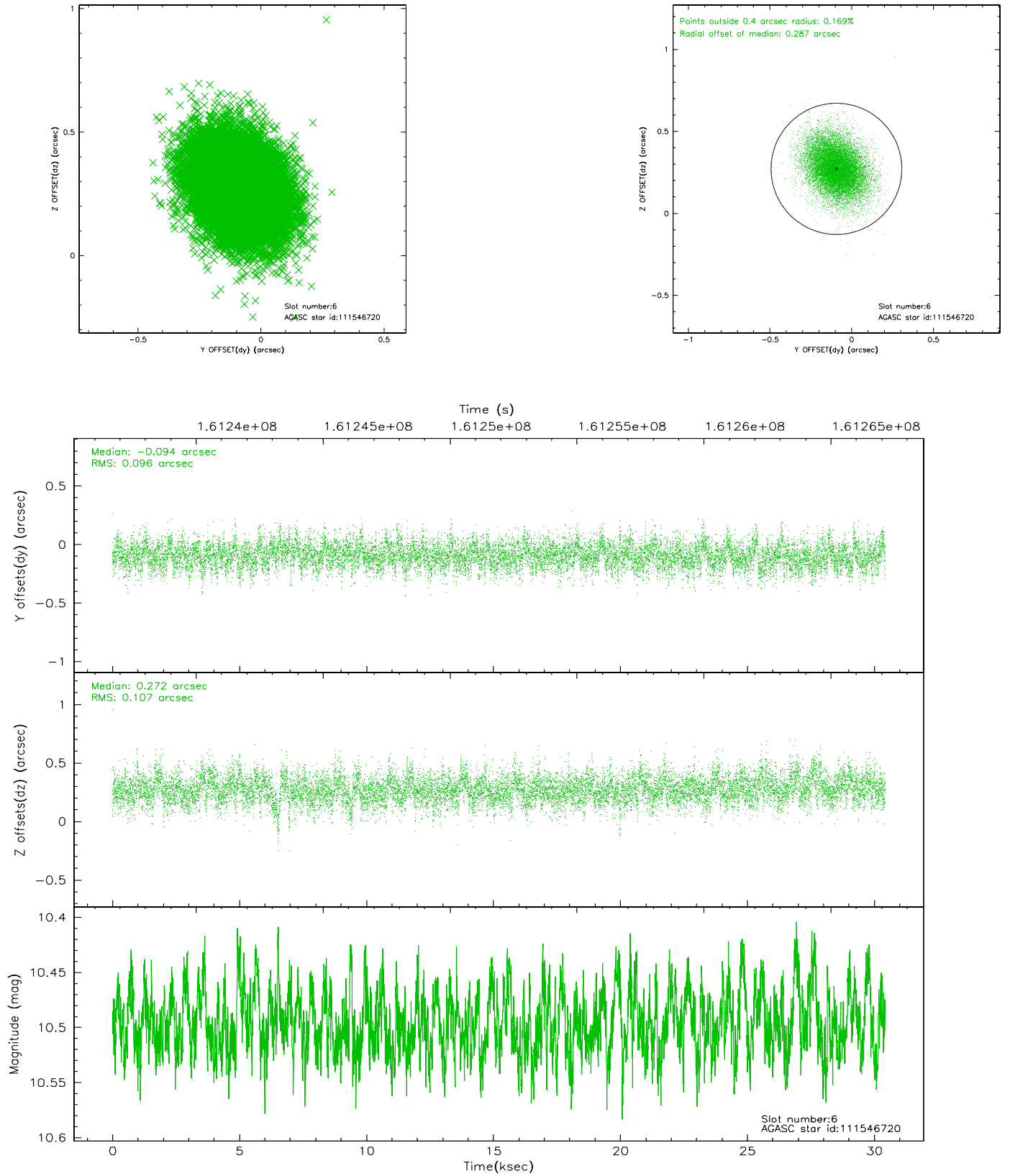
2.4.2 Slot 4



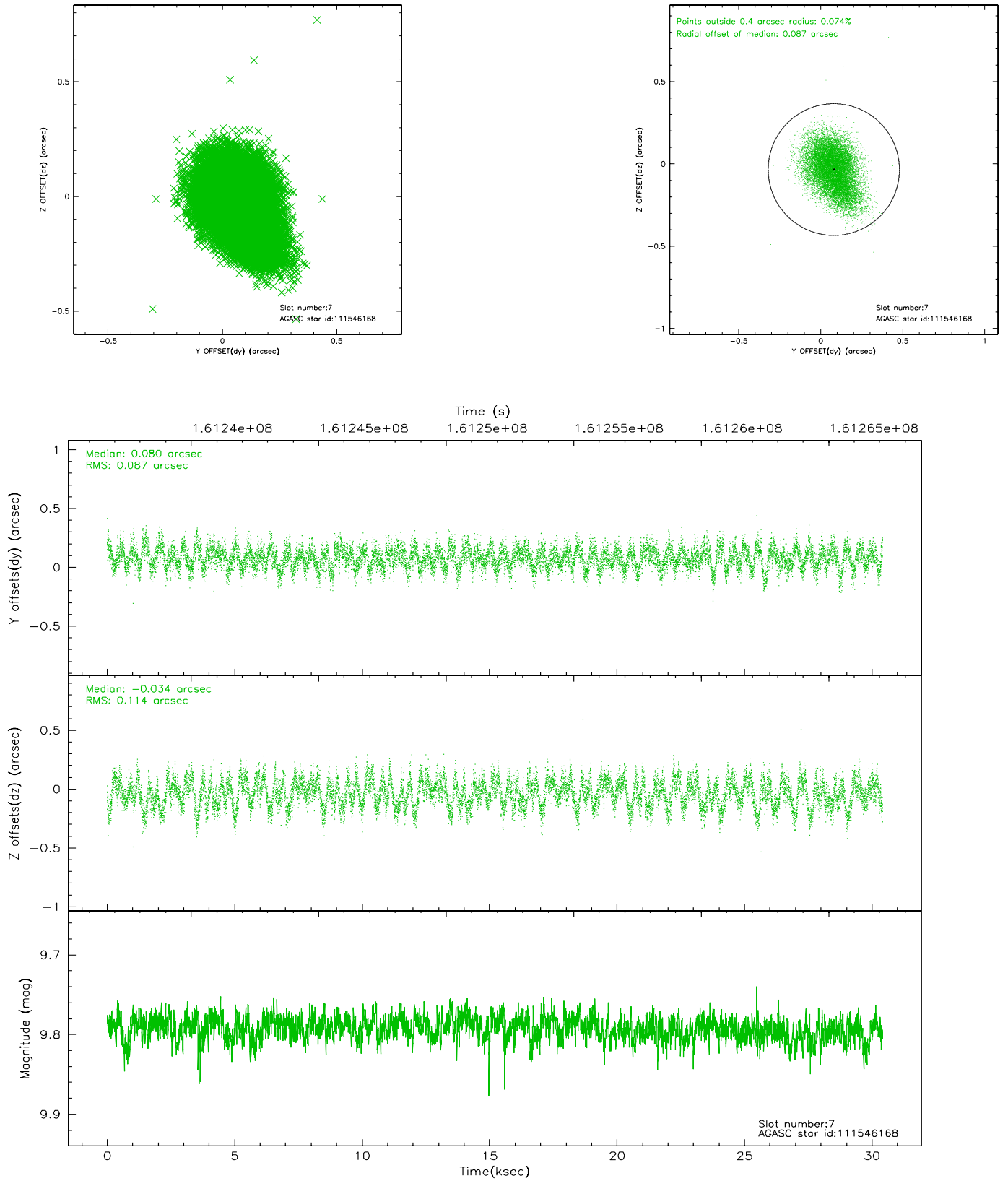
2.4.3 Slot 5



2.4.4 Slot 6

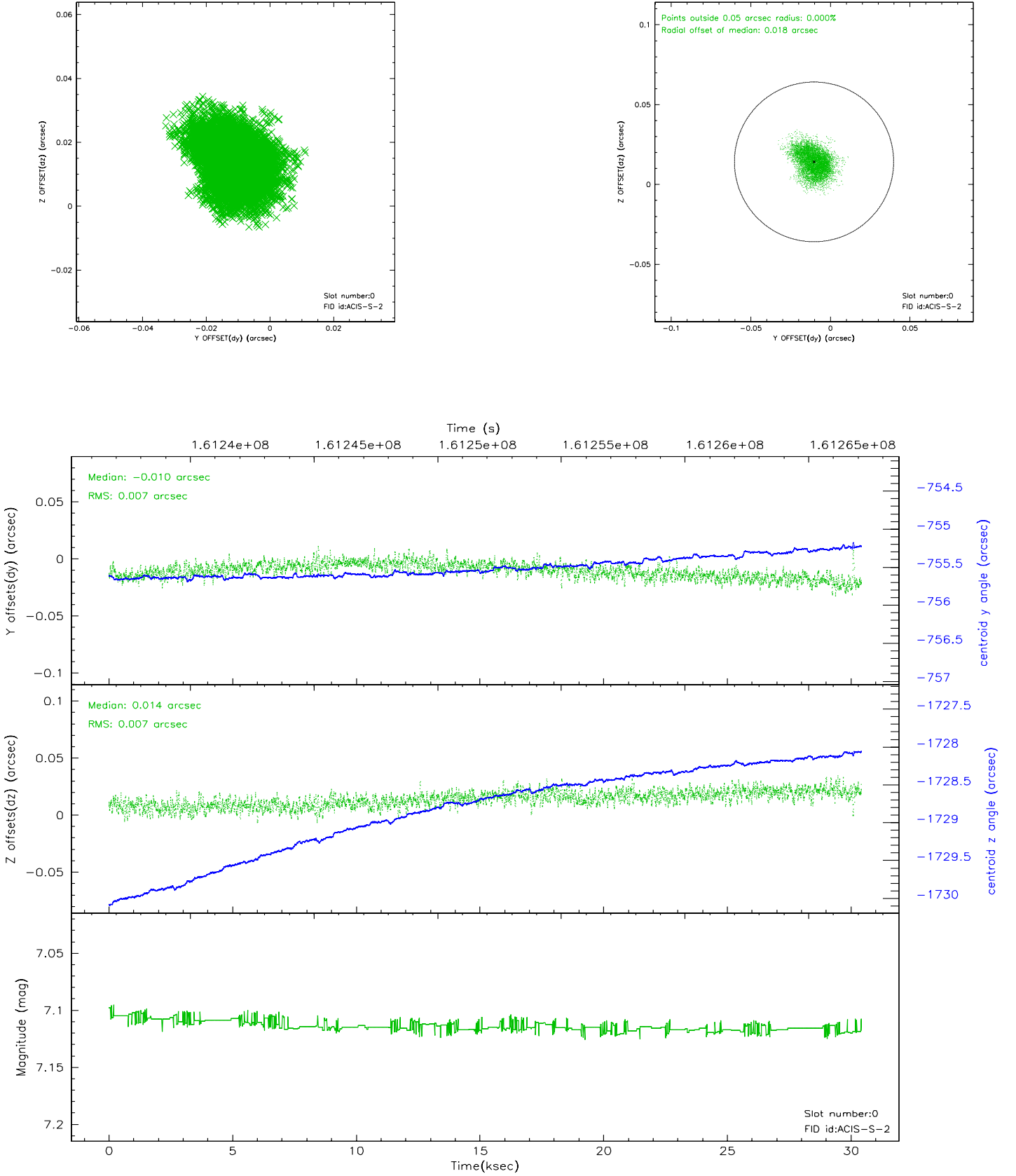


2.4.5 Slot 7

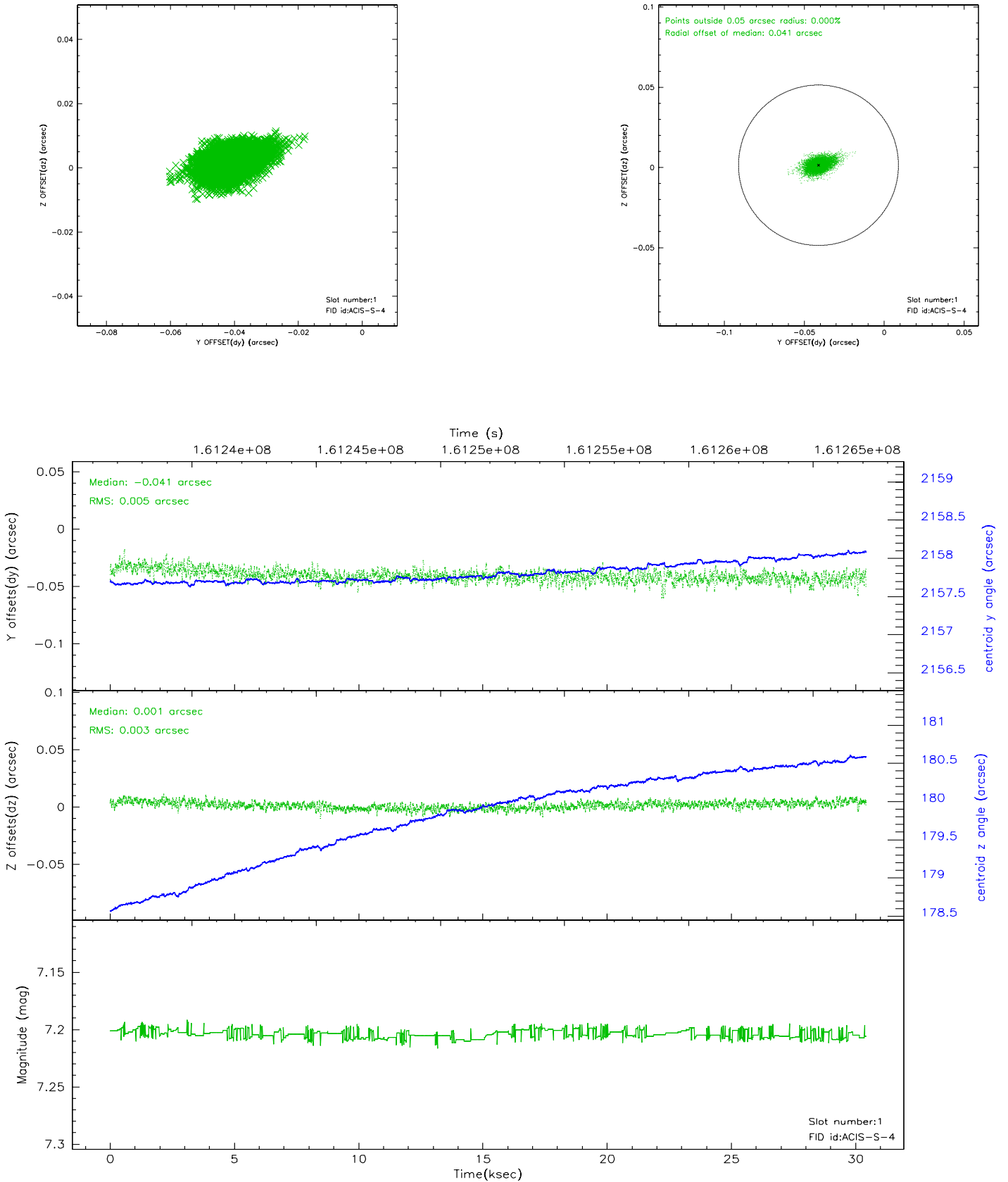


2.5 FID Slots

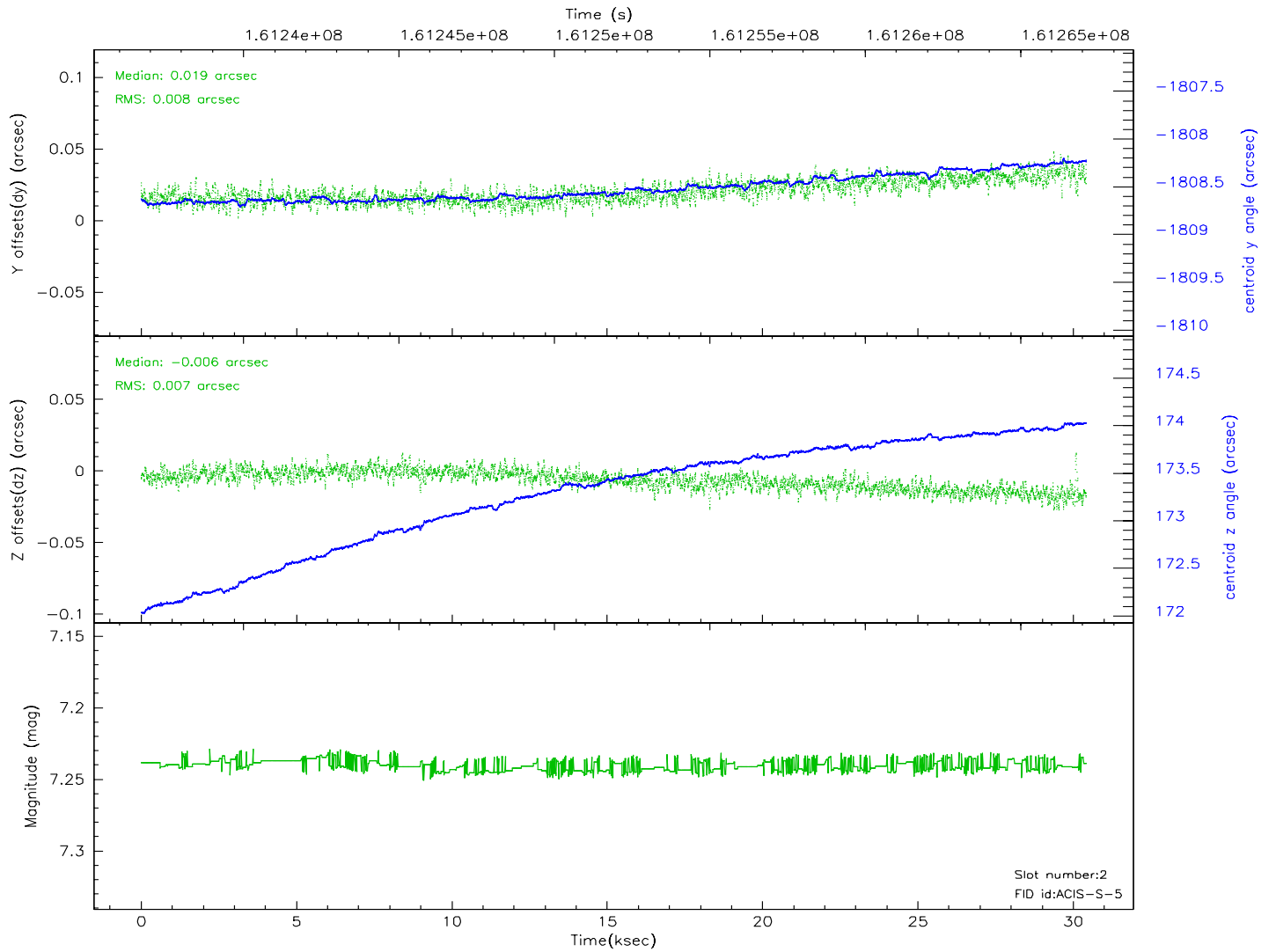
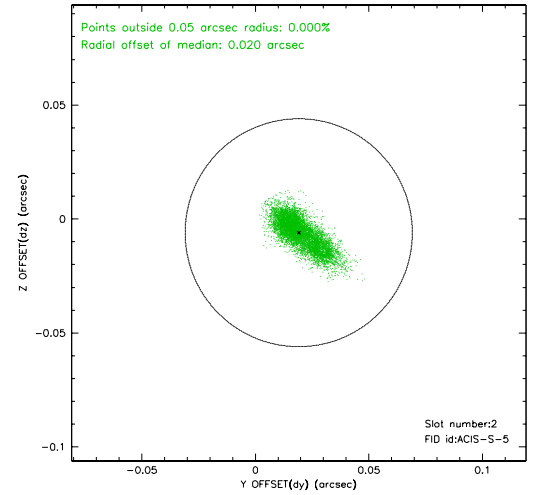
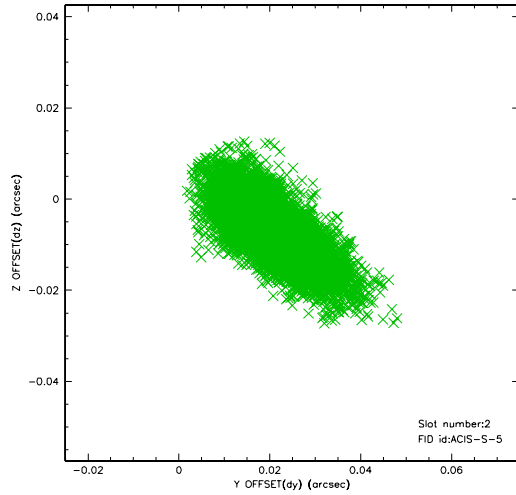
2.5.1 Slot 0



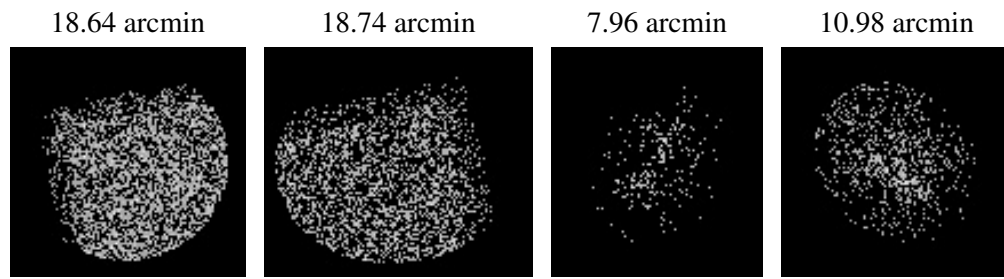
2.5.2 Slot 1



2.5.3 Slot 2



3 Point Sources



A Summary

A.1 Status

V&V Scientist	Joy Nichols
V&V Date (YYYY-MM-DD)	2006.07.21
V&V Edition	1
V&V Disposition and Status	OK
V&V Charge Time	30.415

A.2 Comments