

V&V Reference Report

L2 ASCDS Version : 7.6.8.1

Observation 3909 - L2 Version 001
Chandra X-Ray Center

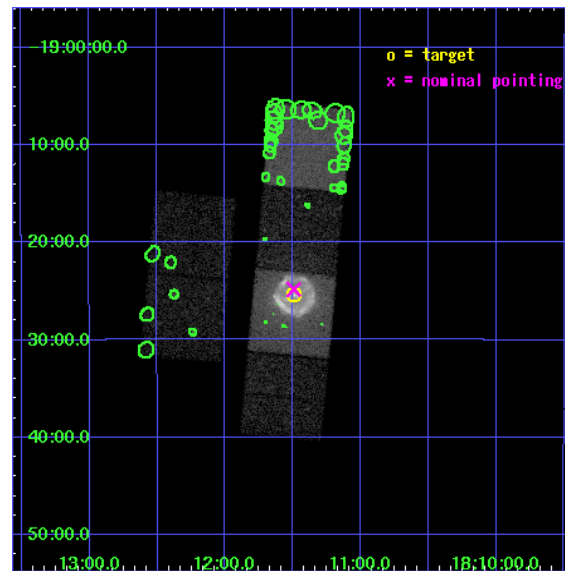
L2 Processing Date : Aug 11 2006

Contents

1	Front	2
2	OBI	3
2.1	OBI	3
2.1.1	Images	3
2.1.2	Bias	3
2.1.3	Parameters	4
2.1.4	Events	4
2.2	Compared Parameters	5
2.3	Aspect	6
2.4	Star Slots	9
2.4.1	Slot 3	9
2.4.2	Slot 4	10
2.4.3	Slot 5	11
2.4.4	Slot 6	12
2.4.5	Slot 7	13
2.5	FID Slots	14
2.5.1	Slot 0	14
2.5.2	Slot 1	15
2.5.3	Slot 2	16
3	Point Sources	17
A	Summary	18
A.1	Status	18
A.2	Comments	18

1 Front

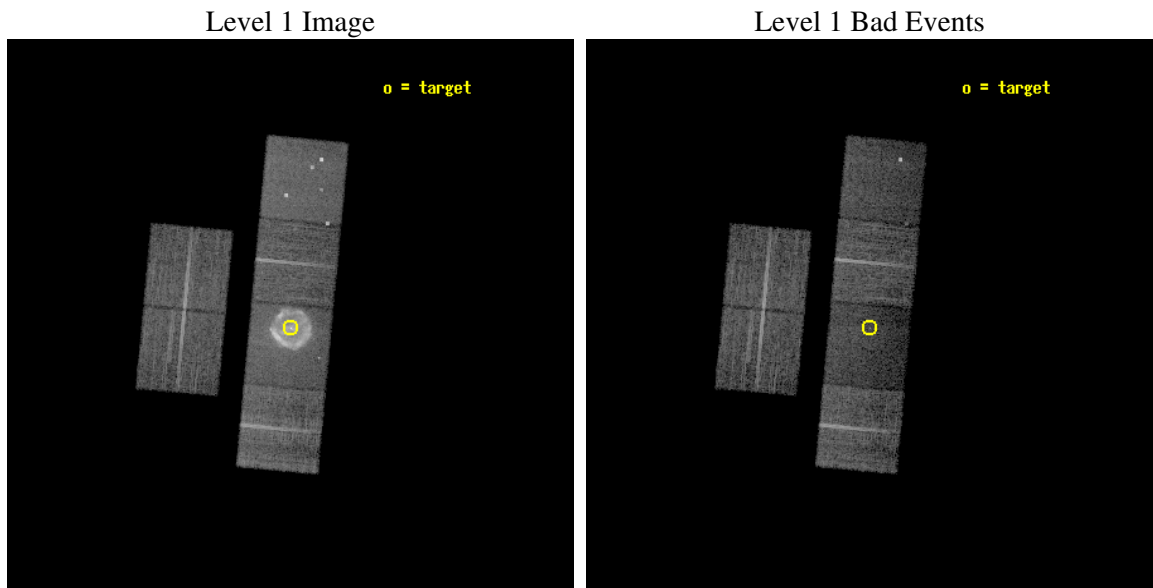
seq_num	500388
obs_id	3909
title	THE DYNAMICS OF THE PULSAR WIND NEBULA IN G11.2-0.3
observer	Dr. Mallory Roberts
object	G11.2-0.3
dtcycle	0
cycle	P
ra_targ	272.8725
dec_targ	-19.423611
ra_nom	272.87330249115
dec_nom	-19.413988960515
roll_nom	95.387690931291
revision	2
ontime	13961.599947989
livetime	13784.809762781
ontime2	13961.599947989
ontime3	13961.599947989
ontime5	13961.599947989
ontime6	13961.599947989
ontime7	13961.599947989
ontime8	13961.599947989
l2events	170163



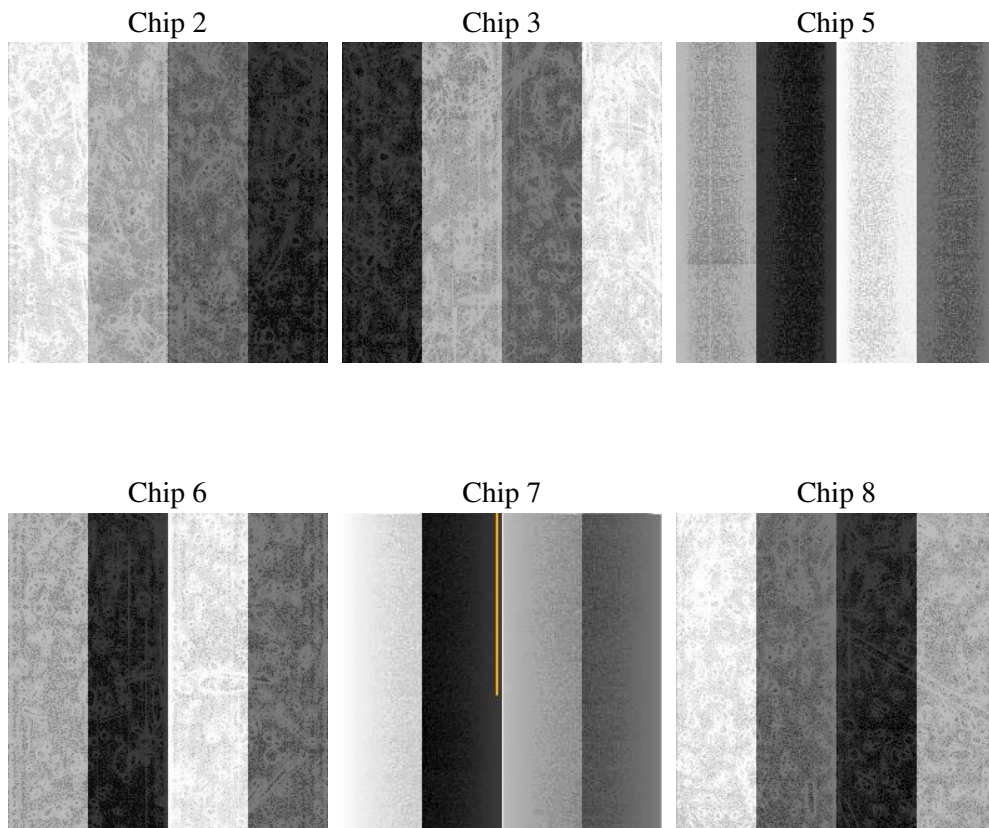
2 OBI

2.1 OBI

2.1.1 Images



2.1.2 Bias



2.1.3 Parameters

obi_num	1
ascdsver	7.6.8.1
caldbver	3.2.3
date	2006-08-11T17:40:28
revision	2

sched_exp_time	14000.000000
ontime	13965.504550517
ontime2	13965.504550517
ontime3	13965.504530609
ontime5	13965.504550517
ontime6	13965.504530609
ontime7	13965.504550517
ontime8	13965.504530609
l1events	507133

2.1.4 Events

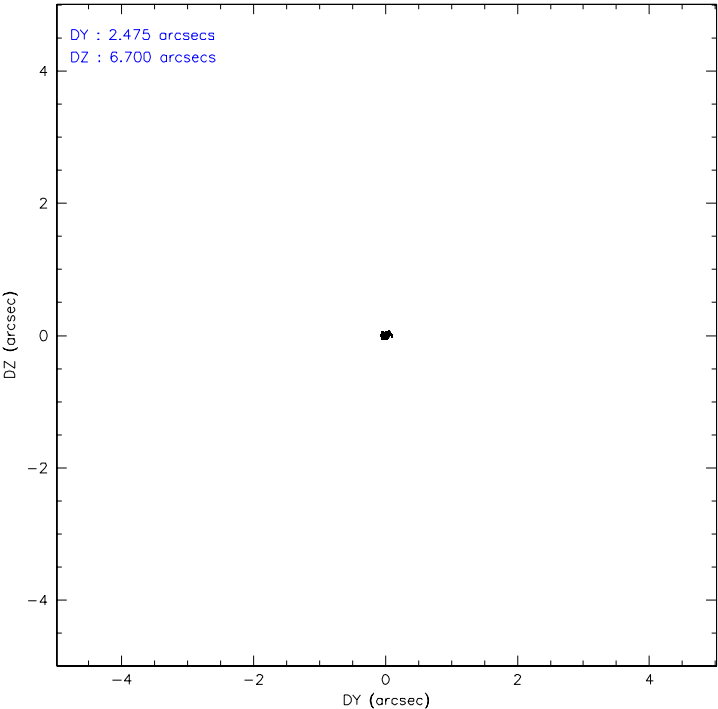
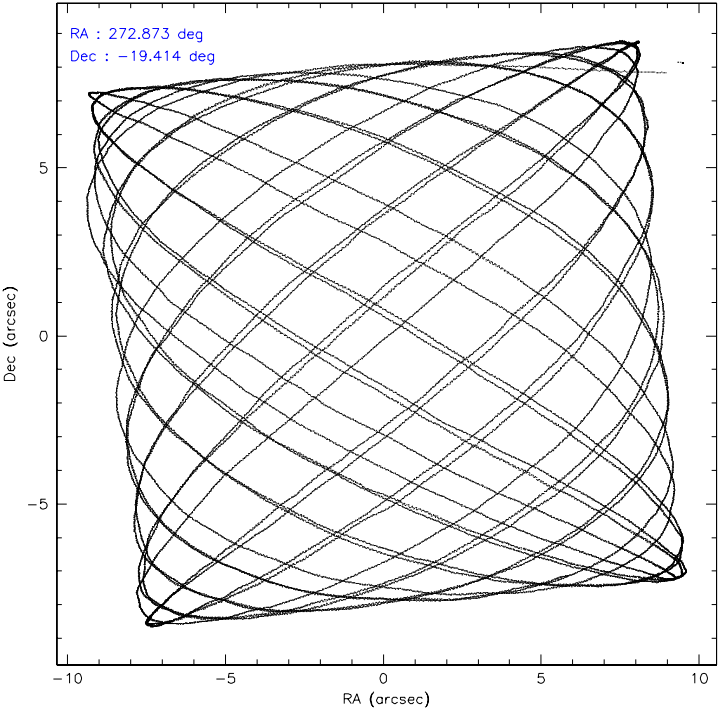
	ccd 2	ccd 3	ccd 5	ccd 6	ccd 7	ccd 8
level 1 events	67773	64515	85119	69414	138077	82235
rejected events	60317	57458	40073	58990	33595	62973
rejected %	88%	89%	47%	84%	24%	76%

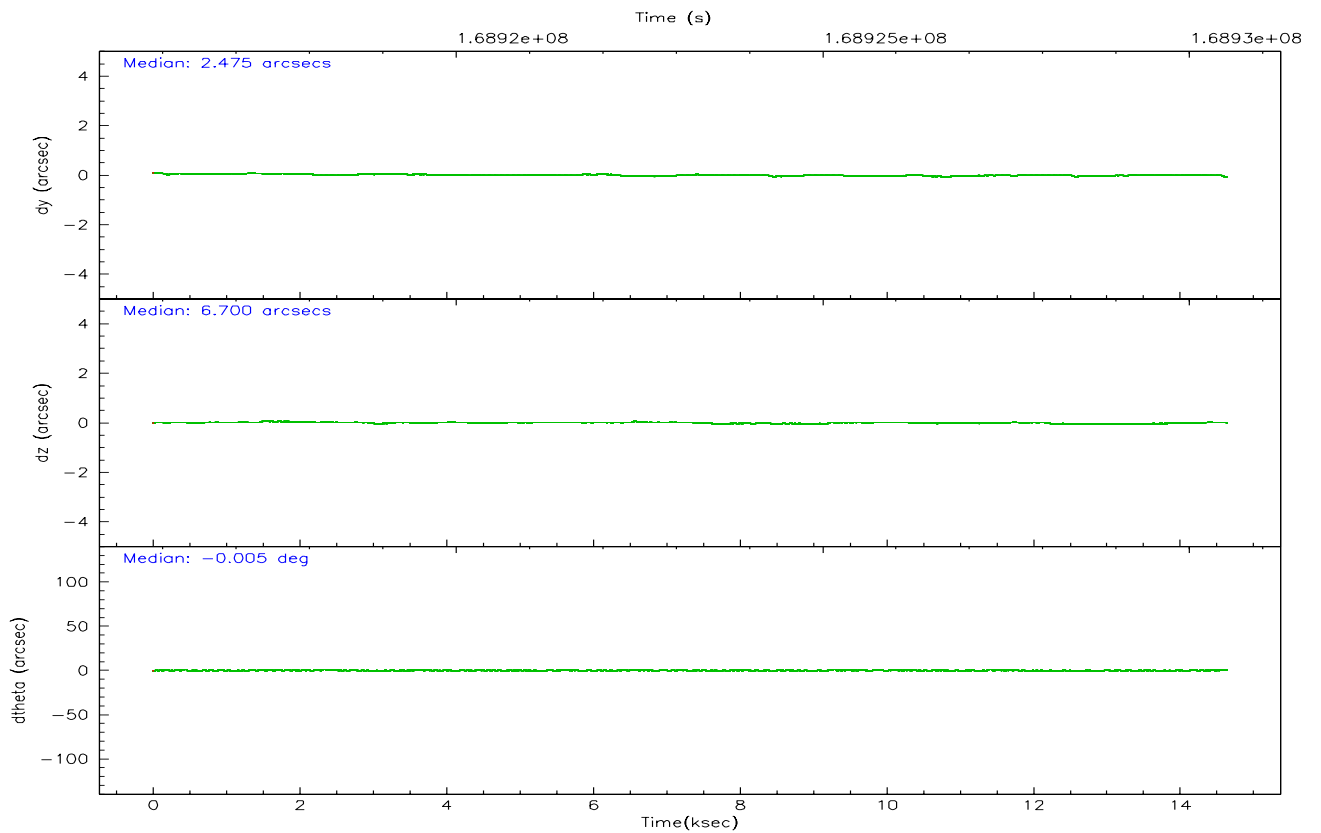
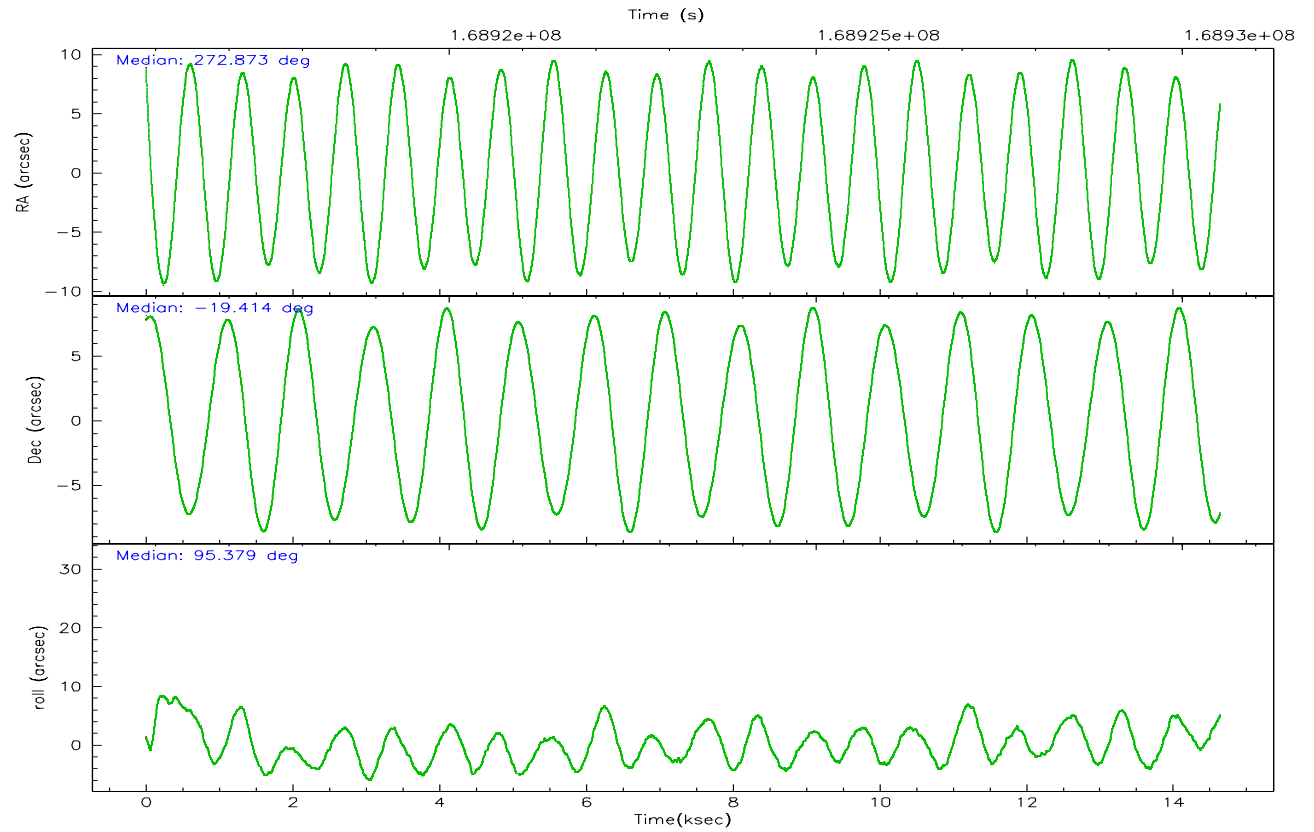
	ccd 2	ccd 3	ccd 5	ccd 6	ccd 7	ccd 8
grade 0 events	3330	3117	5804	5582	19342	5943
	4%	4%	6%	8%	14%	7%
grade 1 events	41	34	66	47	47	59
	0%	0%	0%	0%	0%	0%
grade 2 events	1617	1343	14895	1793	29372	4228
	2%	2%	17%	2%	21%	5%
grade 3 events	711	791	1306	860	10458	1997
	1%	1%	1%	1%	7%	2%
grade 4 events	719	730	1164	788	9950	1936
	1%	1%	1%	1%	7%	2%
grade 5 events	1782	2076	4749	2158	5386	3271
	2%	3%	5%	3%	3%	3%
grade 6 events	1082	1080	21905	1407	35398	5174
	1%	1%	25%	2%	25%	6%
grade 7 events	58491	55344	35230	56779	28124	59627
	86%	85%	41%	81%	20%	72%

2.2 Compared Parameters

Parameter	Planned	Actual	Parameter	Planned	Actual
Instrument	ACIS	ACIS	Obspar format version number	6	6
Detector	ACIS-235678	ACIS-235678	Obspar file type	PREDICTED	ACTUAL
Grating	NONE	NONE	Obspar update status	NONE	UPDATED
Data mode	VFAINT	VFAINT	On-chip summing requested	N	N
Observation mode	POINTING	POINTING	Subarray requested	NONE	NONE
Pointing RA	272.890378	272.8733024911523	Alternating exposures requested	N	N
Pointing Dec	-19.435959	-19.41398896051475	Primary exposure time	0.000000	3.2
Pointing Roll	95.236740	95.38769093129105			
SIM focus pos (mm)	-0.684267	-0.6828225247311905			
SIM defocus (mm)	0	0.001444936568705701			
SIM translation stage pos (mm)	-190.132523	-190.1400660498719			
SIM translation stage offset (mm)	0	0.00754346686406393			
Observation start time	168916512.184000	168915324.58637			
Observation start date	2003-05-10T01:14:08	2003-05-10T00:55:24			
Observation end time	168930512.184000	168931092.67453			
Observation end date	2003-05-10T05:07:28	2003-05-10T05:18:12			
Read mode	TIMED	TIMED			

2.3 Aspect



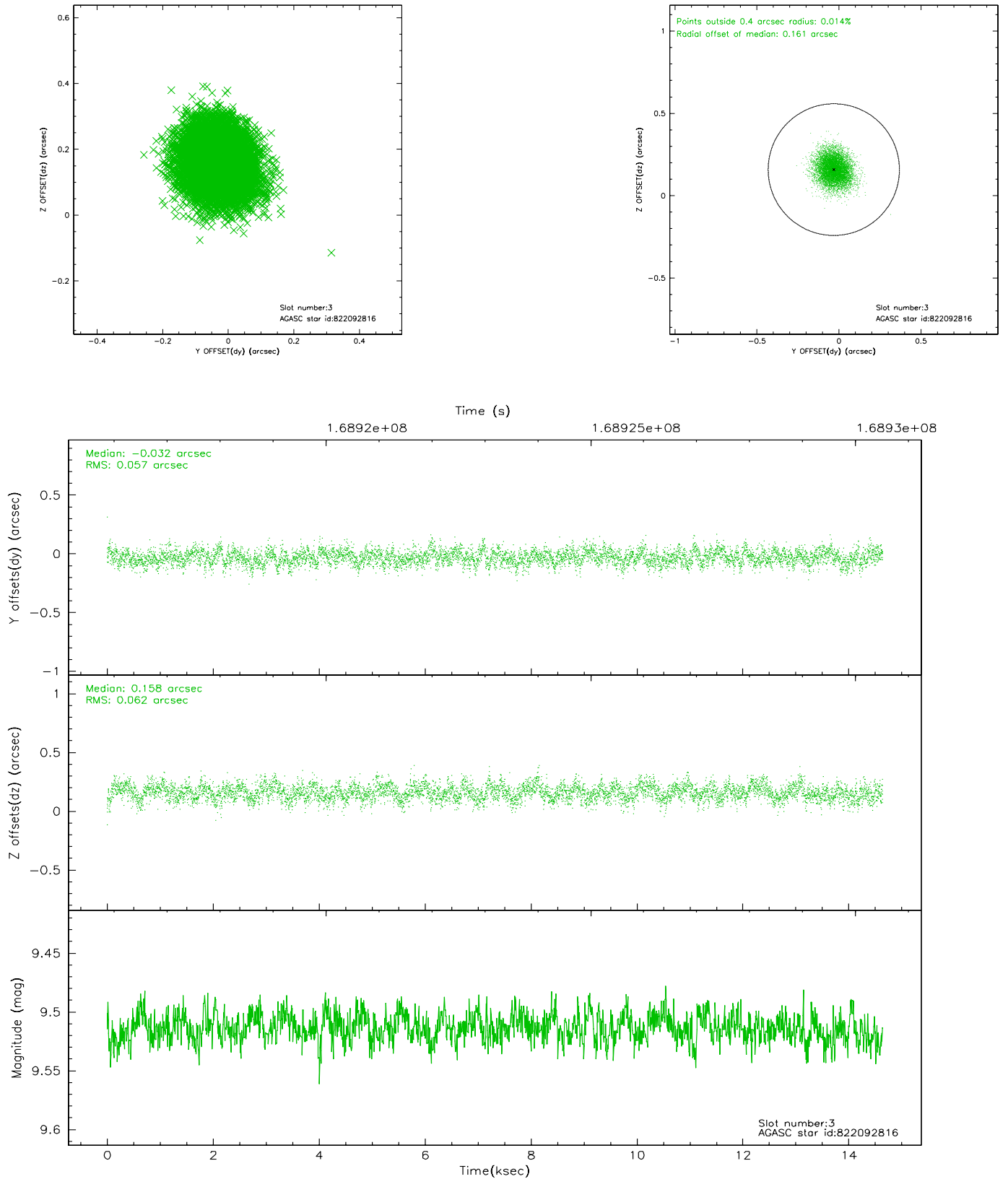


Slot Statistics

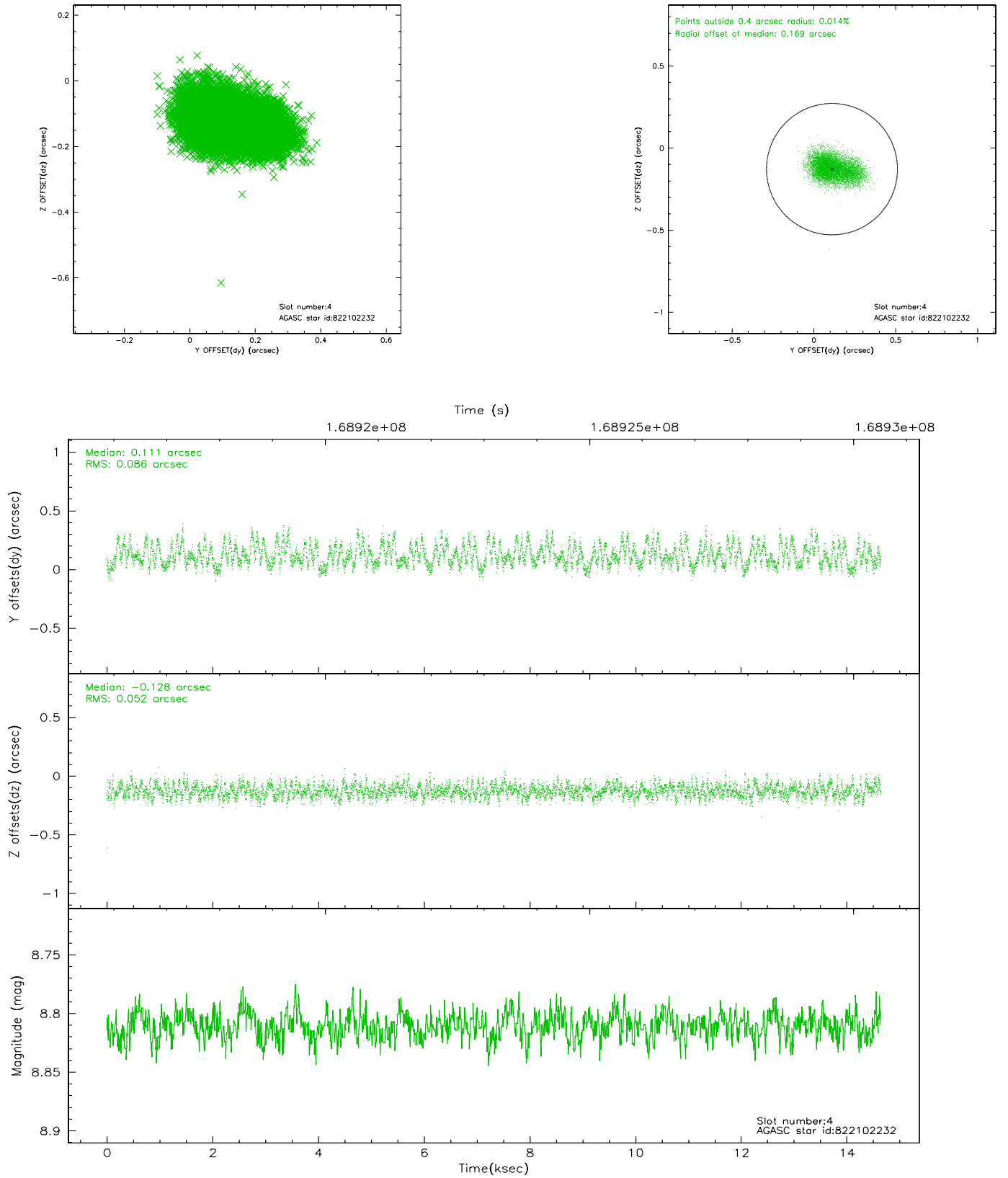
slot	status	id	mag	n_pts	med_dy	med_dz	dr1	dr2	ra	dec	mean_y	mean_z
0	FID	ACIS-S-2	7.11	3573	-0.034	0.013	0.007	0.012	0.000000	0.000000	-755.11	-1727.85
1	FID	ACIS-S-4	7.20	3573	-0.028	0.013	0.005	0.009	0.000000	0.000000	2158.00	180.35
2	FID	ACIS-S-5	7.24	3572	0.031	-0.018	0.006	0.011	0.000000	0.000000	-1807.51	174.29
3	GUIDE	822092816	9.51	7136	-0.032	0.158	0.090	0.147	273.207975	-19.445846	-134.51	-1070.09
4	GUIDE	822102232	8.81	7145	0.111	-0.128	0.106	0.175	272.350923	-20.034935	-1983.71	2013.56
5	GUIDE	822102528	9.30	7140	0.107	-0.057	0.099	0.159	272.446853	-20.048949	-2062.86	1695.33
6	GUIDE	822102608	9.30	7144	-0.122	-0.052	0.079	0.129	272.659367	-19.166896	1035.45	694.31
7	GUIDE	822085152	9.00	7138	-0.074	0.079	0.065	0.107	272.974056	-19.057083	1332.53	-407.60

2.4 Star Slots

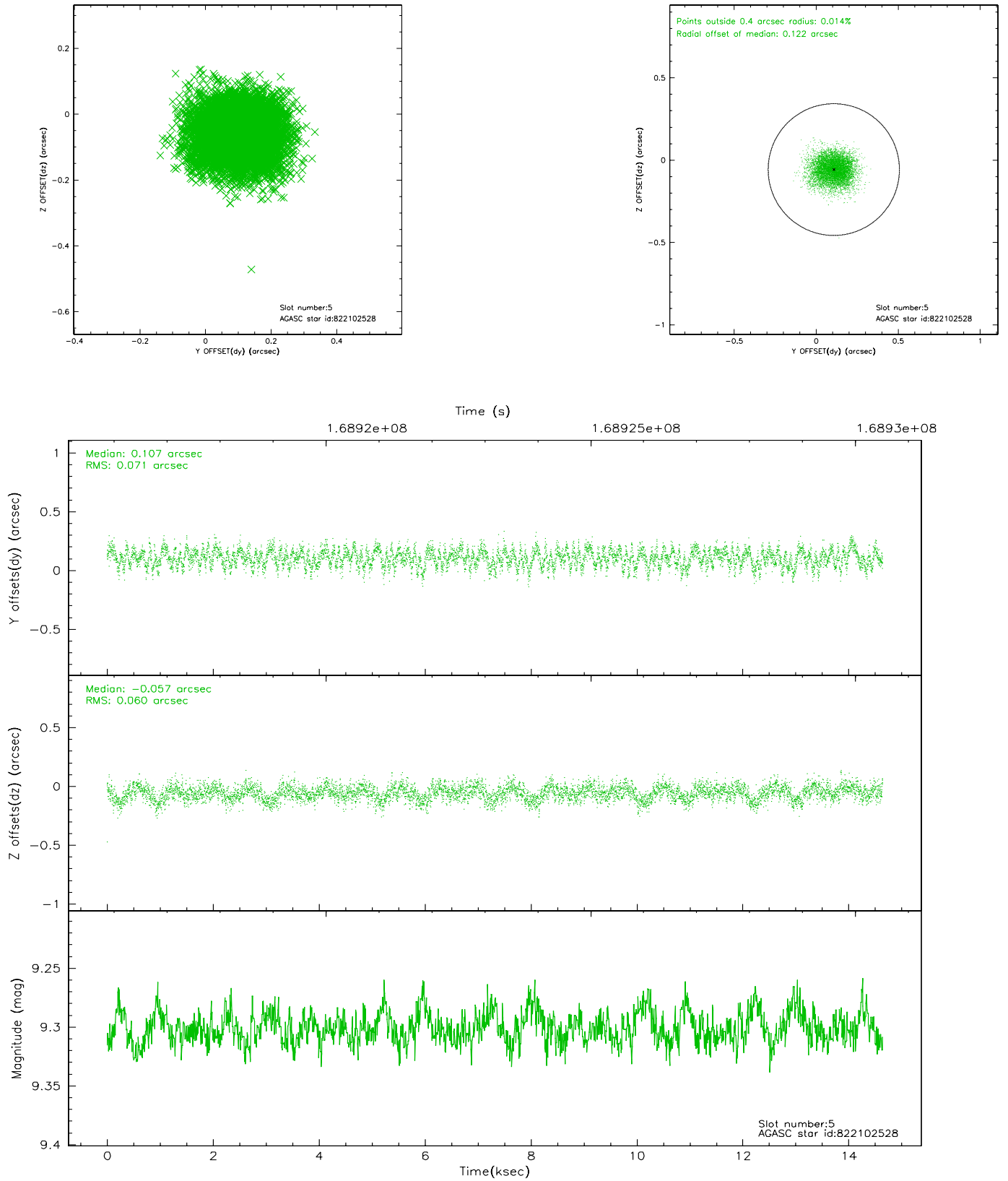
2.4.1 Slot 3



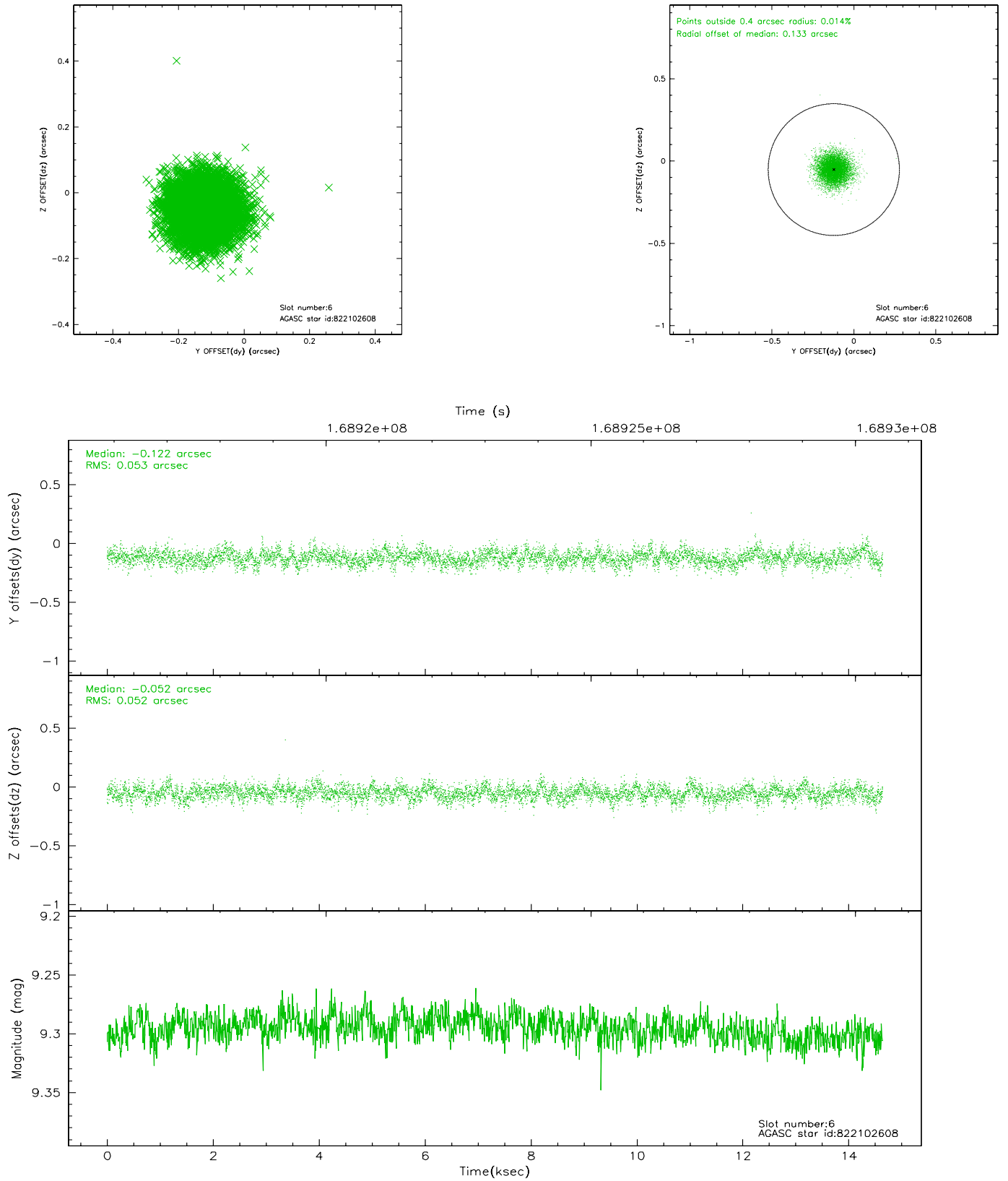
2.4.2 Slot 4



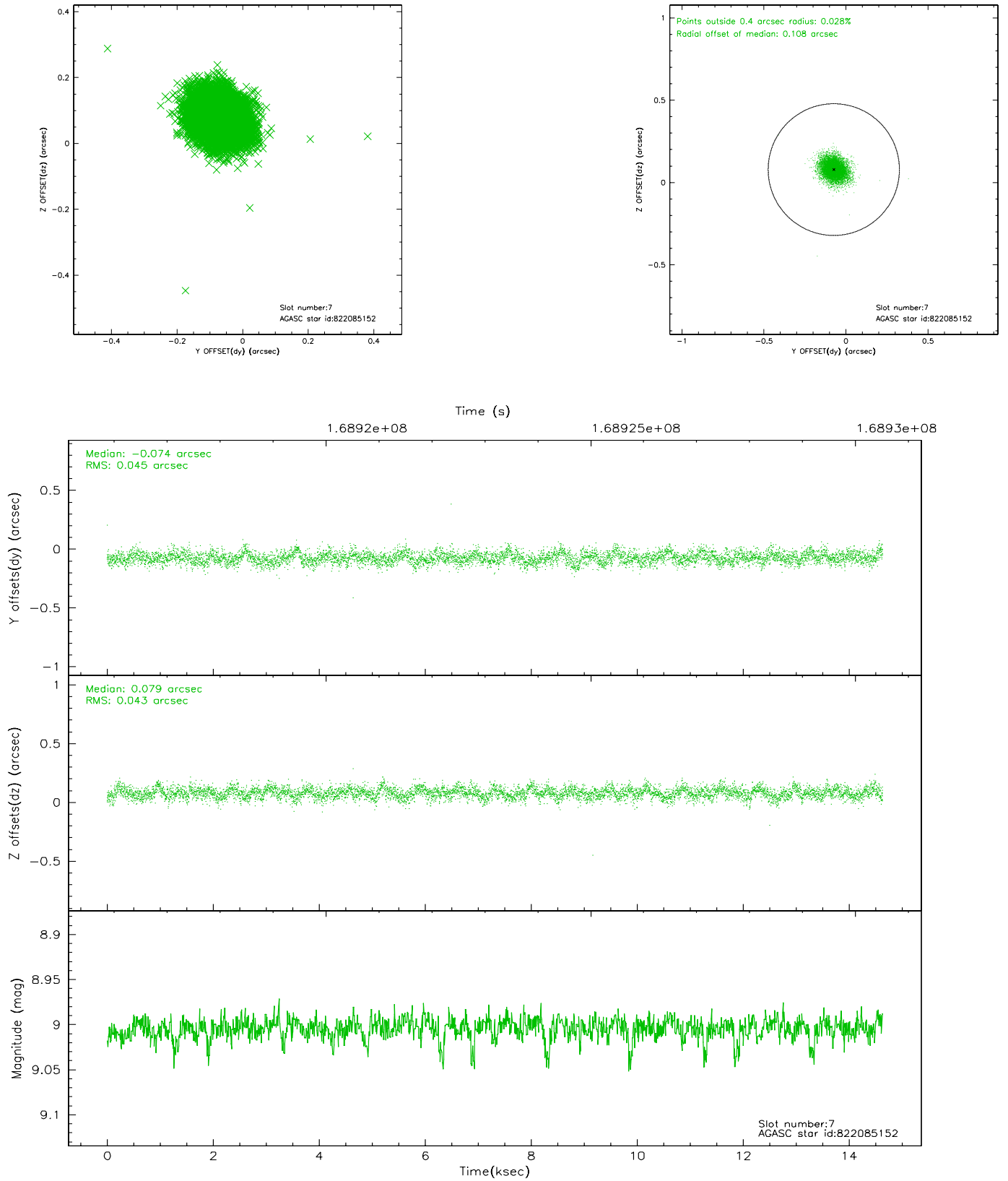
2.4.3 Slot 5



2.4.4 Slot 6

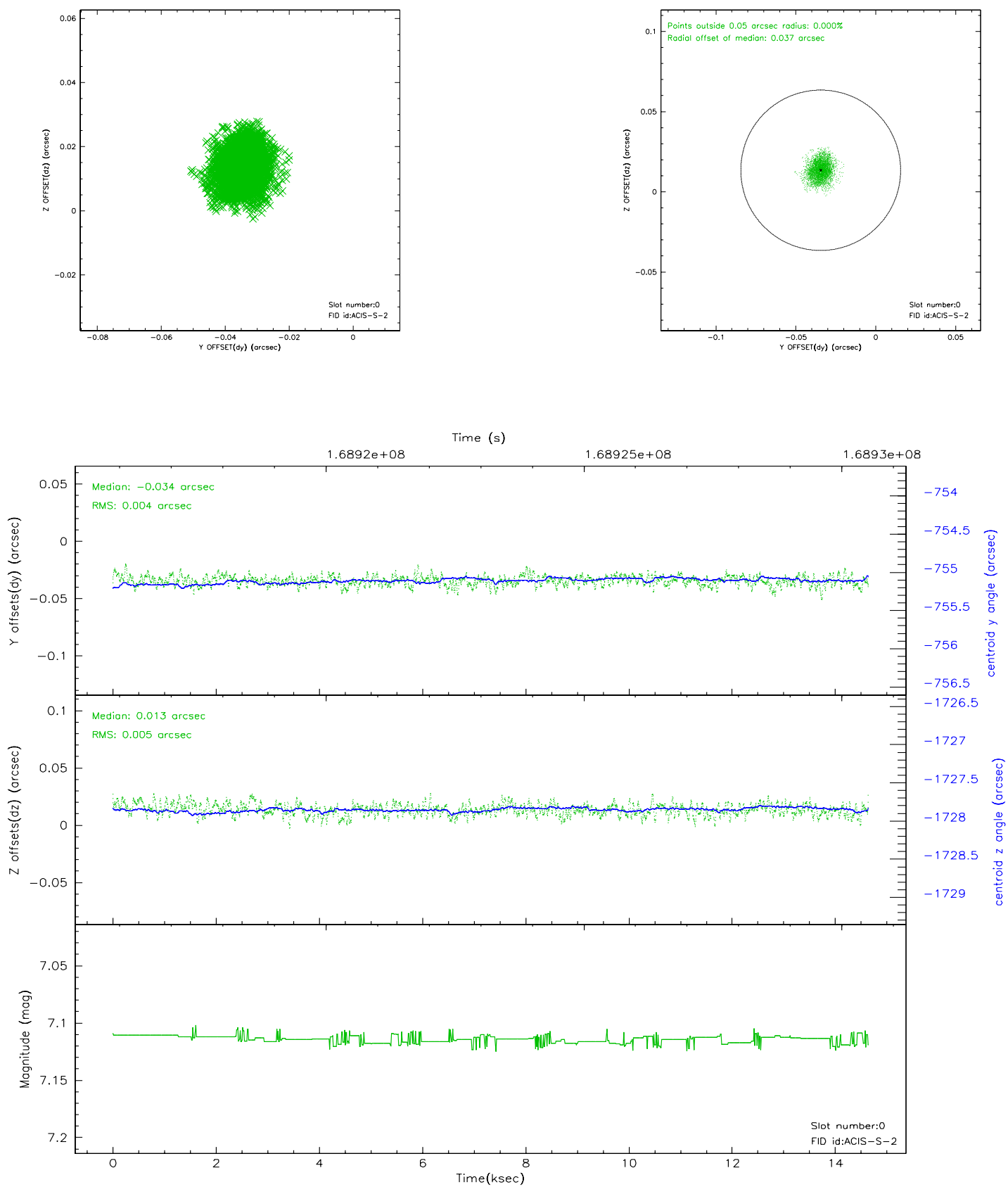


2.4.5 Slot 7

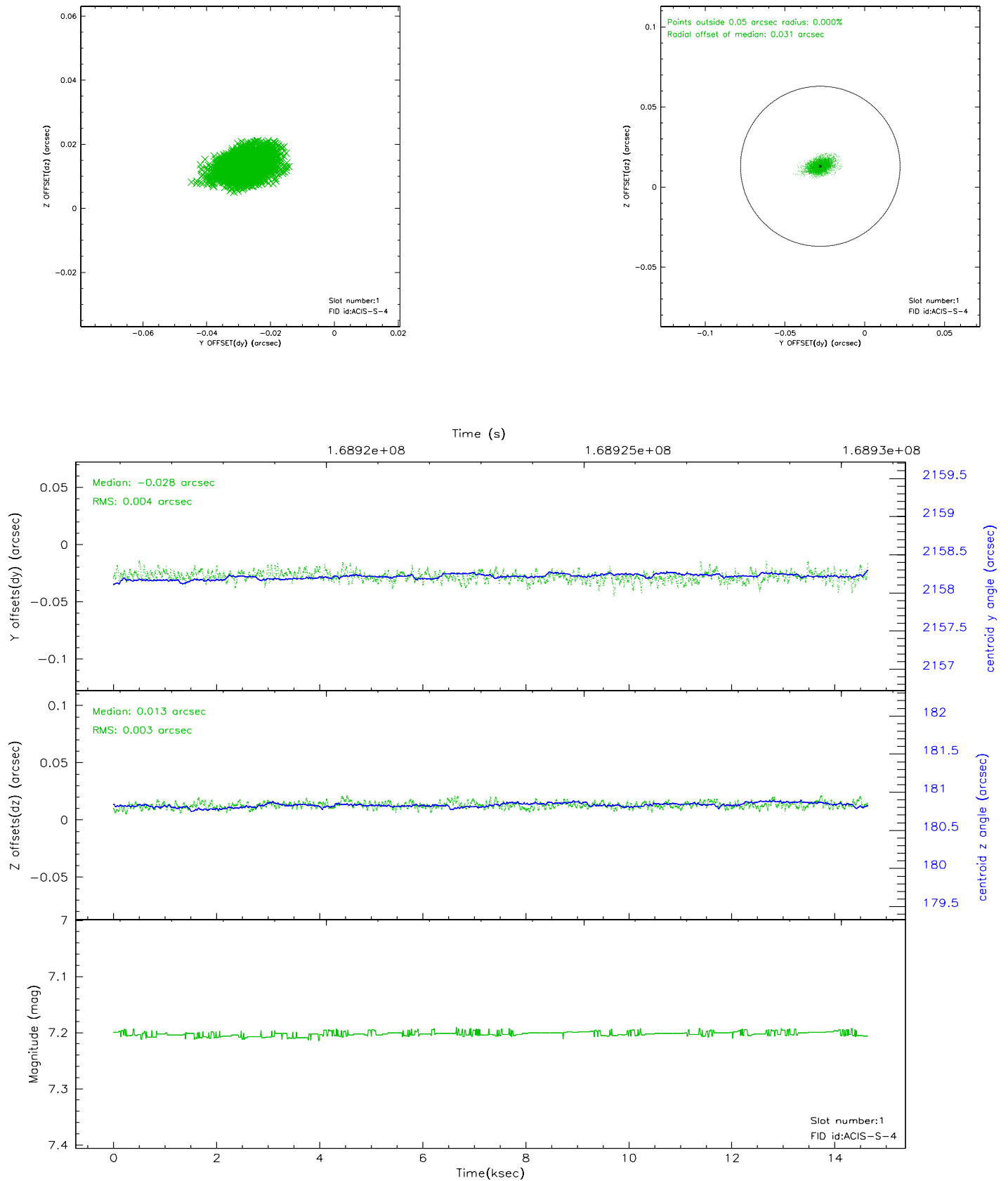


2.5 FID Slots

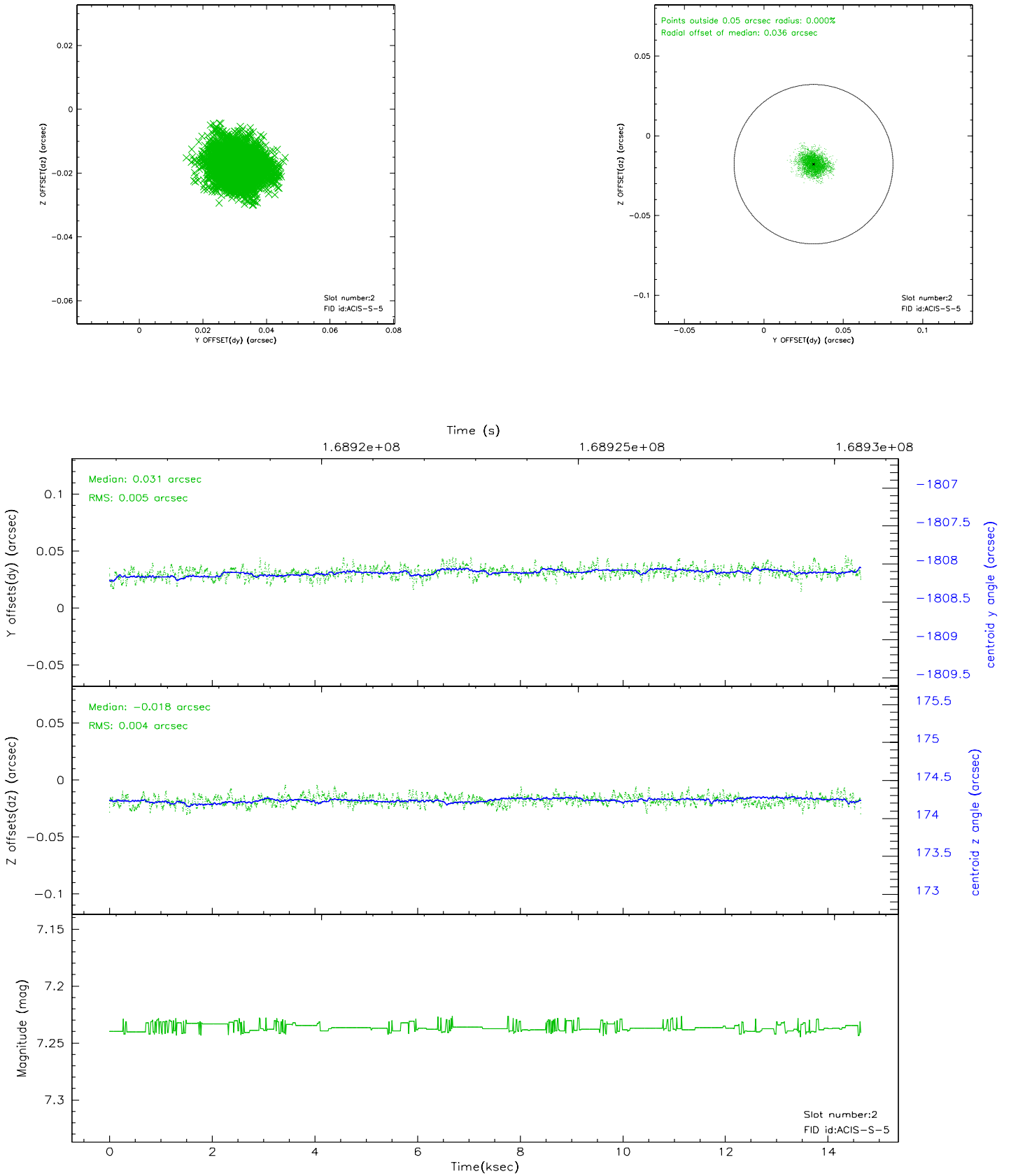
2.5.1 Slot 0



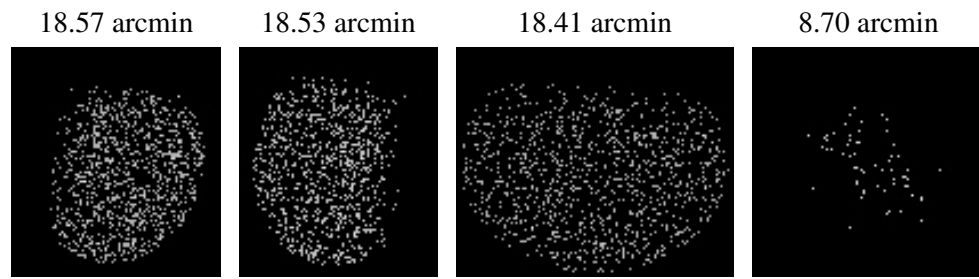
2.5.2 Slot 1



2.5.3 Slot 2



3 Point Sources



A Summary

A.1 Status

V&V Scientist	Jen Lauer
V&V Date (YYYY-MM-DD)	2006.08.11
V&V Edition	1
V&V Disposition and Status	OK
V&V Charge Time	13.964

A.2 Comments