

V&V Reference Report

L2 ASCDS Version : 7.6.8

Observation 3896 - L2 Version 5
Chandra X-Ray Center

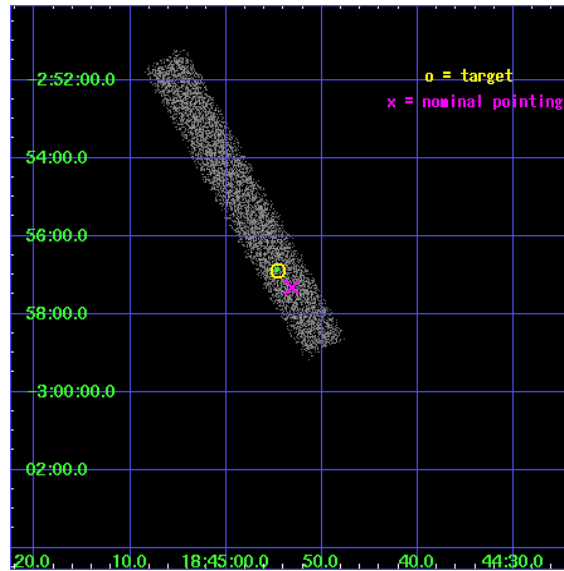
L2 Processing Date : Jan 14 2009

Contents

1	Front	2
2	OBI	3
2.1	OBI	3
2.1.1	Images	3
2.1.2	Bias	3
2.1.3	Parameters	4
2.1.4	Events	4
2.2	Compared Parameters	5
2.3	Aspect	6
2.4	Star Slots	9
2.4.1	Slot 3	9
2.4.2	Slot 4	10
2.4.3	Slot 5	11
2.4.4	Slot 6	12
2.4.5	Slot 7	13
2.5	FID Slots	14
2.5.1	Slot 0	14
2.5.2	Slot 1	15
2.5.3	Slot 2	16
3	Point Sources	17
A	Summary	18
A.1	Status	18
A.2	Comments	18

1 Front

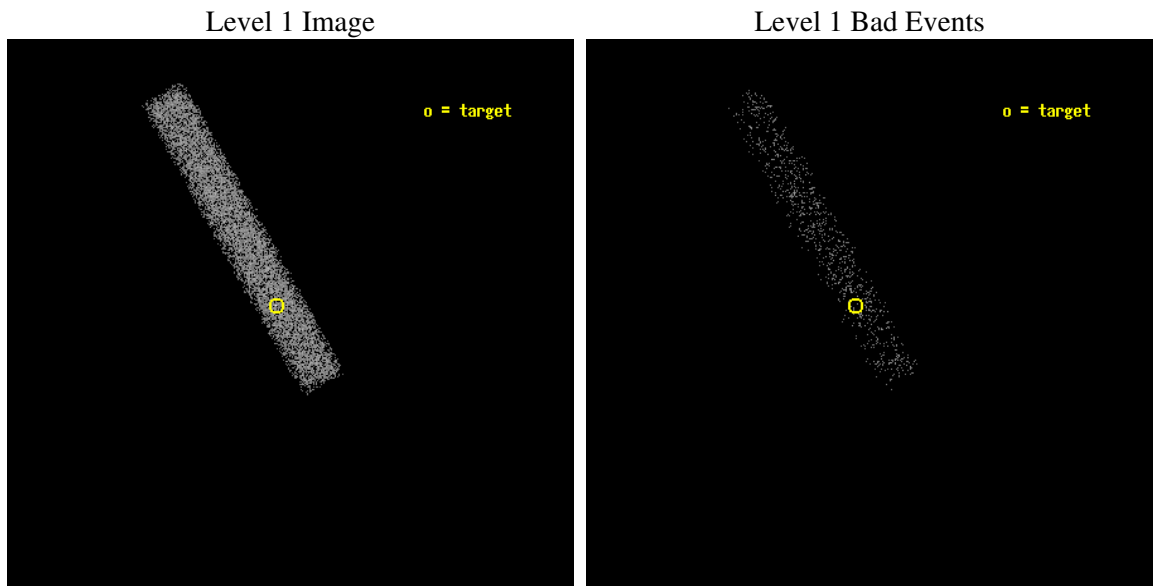
seq_num	500375
obs_id	3896
title	IS AX J1845-0258 AN ANOMALOUS X-RAY PULSAR?
observer	Professor Victoria Kaspi
object	AX J1845-0258
dtcycle	0
cycle	P
ra_targ	281.2275
dec_targ	-2.948056
ra_nom	281.22139623492
dec_nom	-2.9554837038744
roll_nom	240.68079416059
revision	5
ontime	7750.8001154959
livetime	7029.5665839796
ontime7	7750.8001154959
l2events	7846



2 OBI

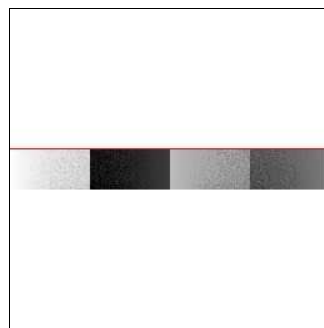
2.1 OBI

2.1.1 Images



2.1.2 Bias

Chip 7



2.1.3 Parameters

obi_num	0
ascdsver	7.6.11.10
caldbver	3.5.1
date	2009-01-14T09:42:40
revision	5

sched_exp_time	11786.670000
ontime	7750.8001154959
ontime7	7750.8001154959
l1events	13129

2.1.4 Events

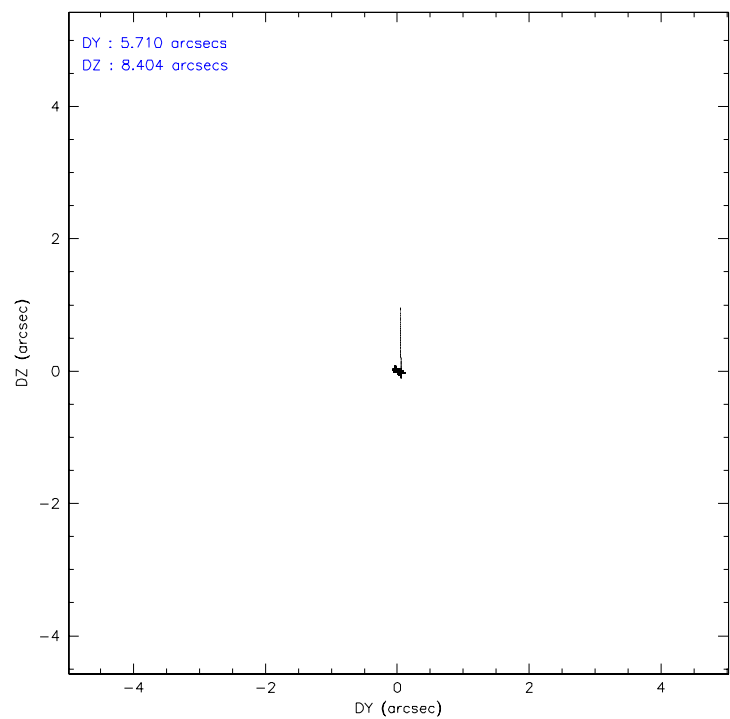
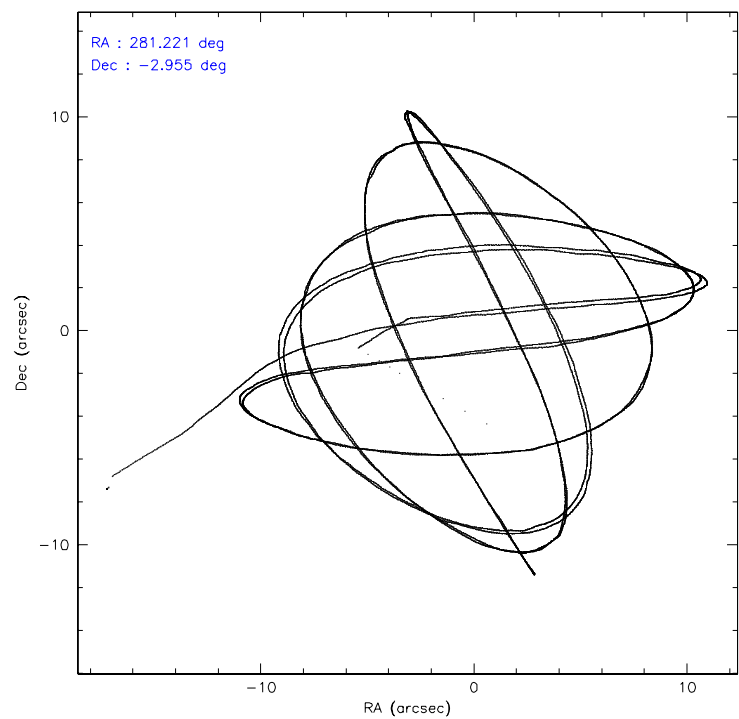
	ccd 7
level 1 events	13129
rejected events	5085
rejected %	38%

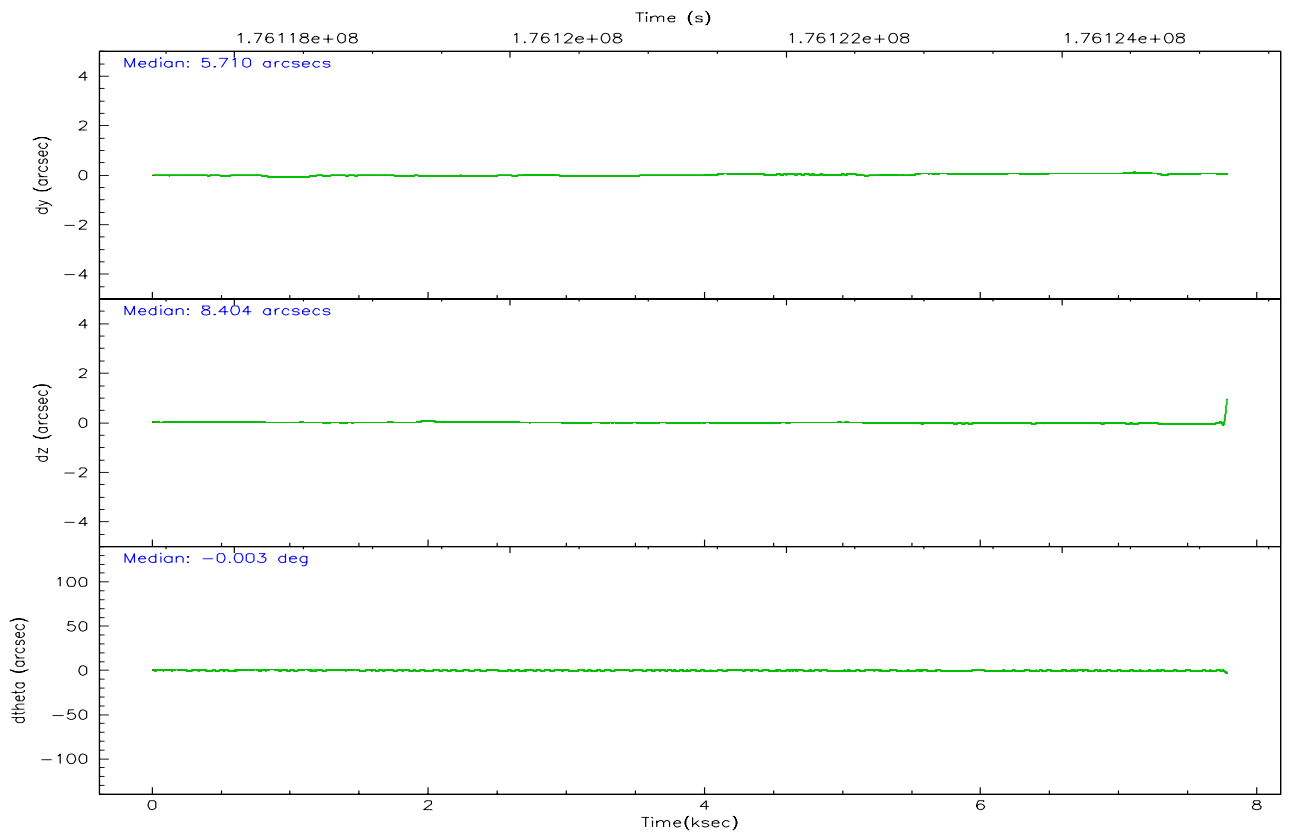
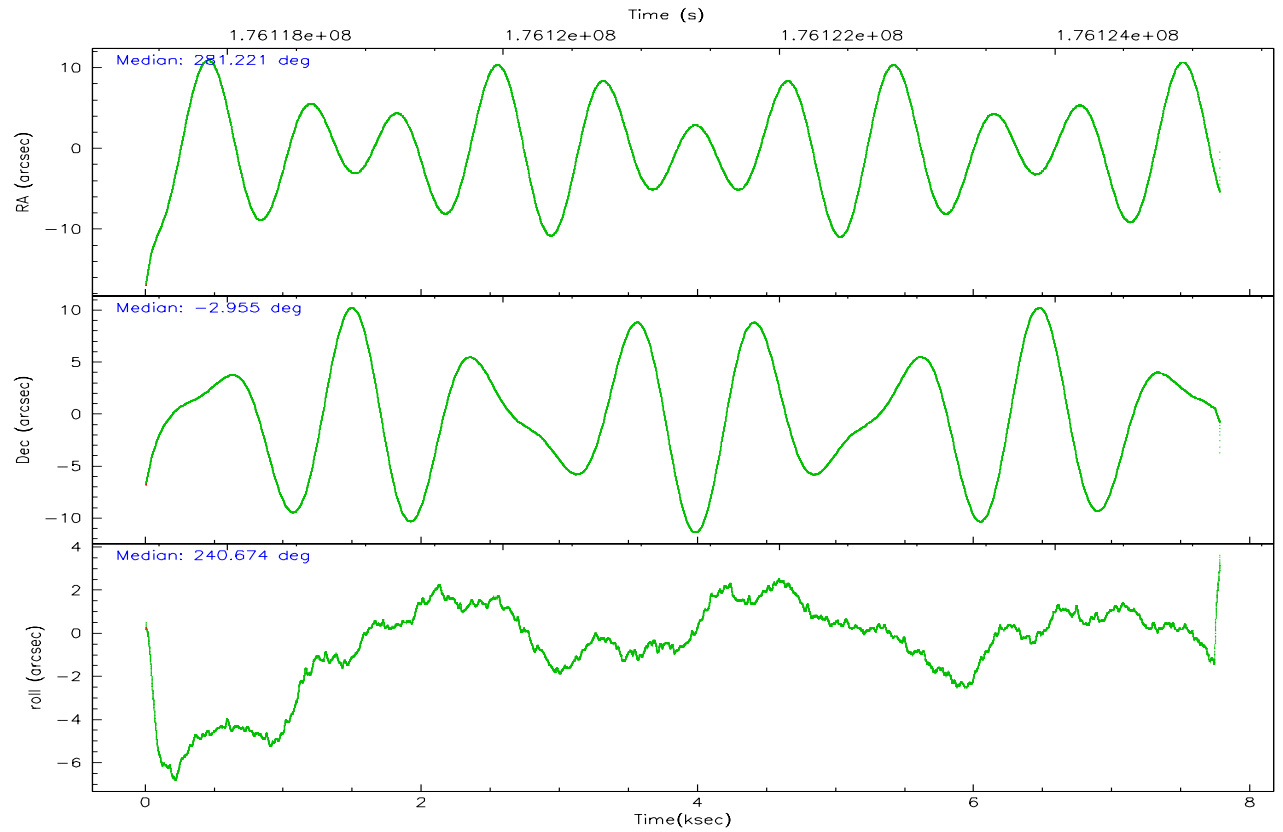
	ccd 7
grade 0 events	981
	7%
grade 1 events	8
	0%
grade 2 events	1486
	11%
grade 3 events	867
	6%
grade 4 events	769
	5%
grade 5 events	846
	6%
grade 6 events	4193
	31%
grade 7 events	3979
	30%

2.2 Compared Parameters

Parameter	Planned	Actual	Parameter	Planned	Actual
Instrument	ACIS	ACIS	Obspar format version number	6	6
Detector	ACIS-7	ACIS-7	Obspar file type	PREDICTED	ACTUAL
Grating	NONE	NONE	Obspar update status	NONE	UPDATED
Data mode	VFAINT	VFAINT	On-chip summing requested	N	N
Observation mode	POINTING	POINTING	Subarray requested	1/8	1/8
Pointing RA	281.220654	281.2213962349155	Subarray start row	0	449
Pointing Dec	-2.928303	-2.955483703874435	Subarray row count	1024	128
Pointing Roll	240.524106	240.6807941605916	Alternating exposures requested	N	N
SIM focus pos (mm)	-0.684267	-0.6828225247311905	Primary exposure time	0.000000	0.4
SIM defocus (mm)	0	0.001444936568705701			
SIM translation stage pos (mm)	-190.132523	-190.1400660498719			
SIM translation stage offset (mm)	0	0.00754346686406393			
Observation start time	176118037.184000	176116862.14243			
Observation start date	2003-08-01T09:39:33	2003-08-01T09:21:02			
Observation end time	176129824.184000	176125210.76778			
Observation end date	2003-08-01T12:56:00	2003-08-01T11:40:10			
Read mode	TIMED	TIMED			

2.3 Aspect



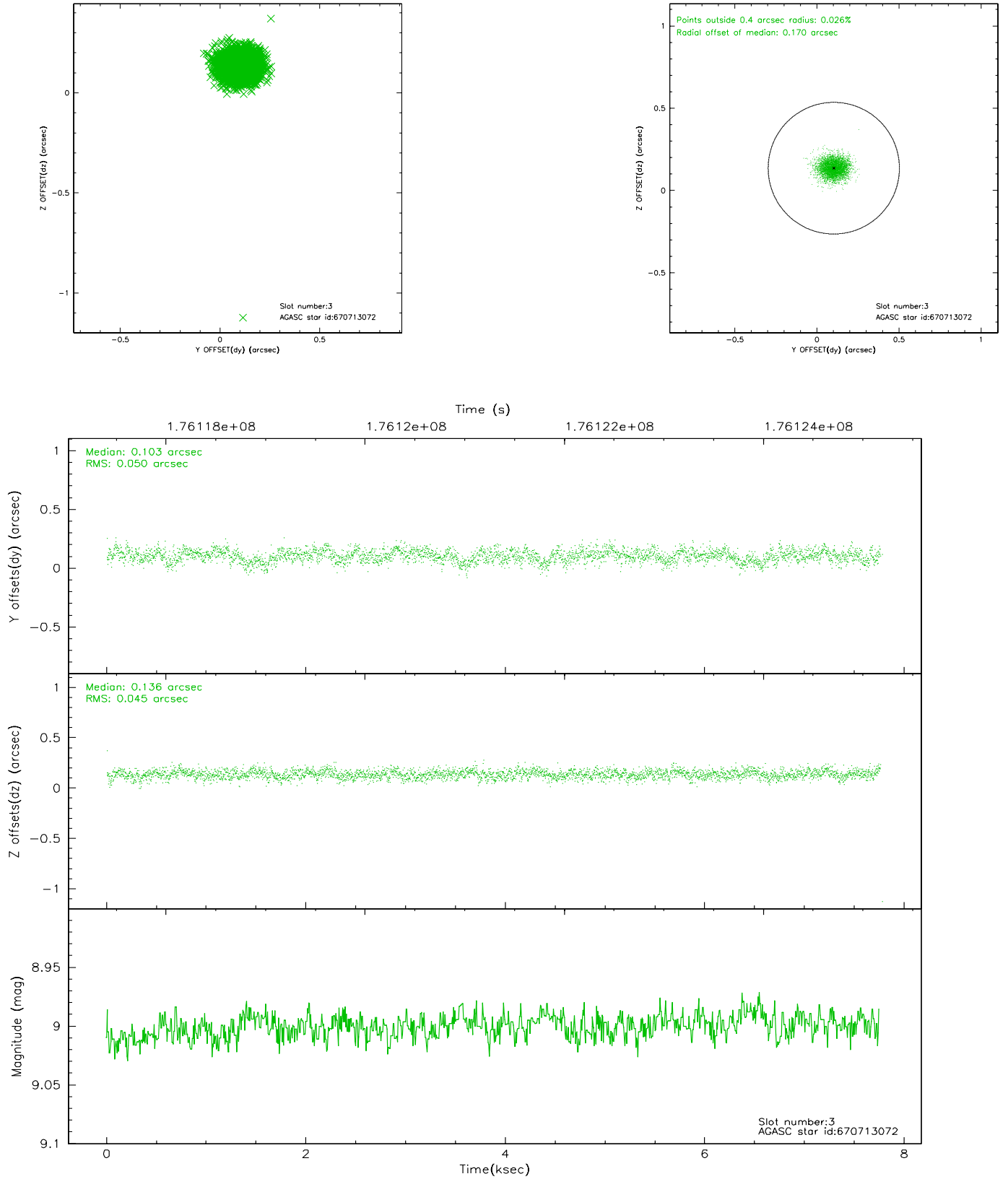


Slot Statistics

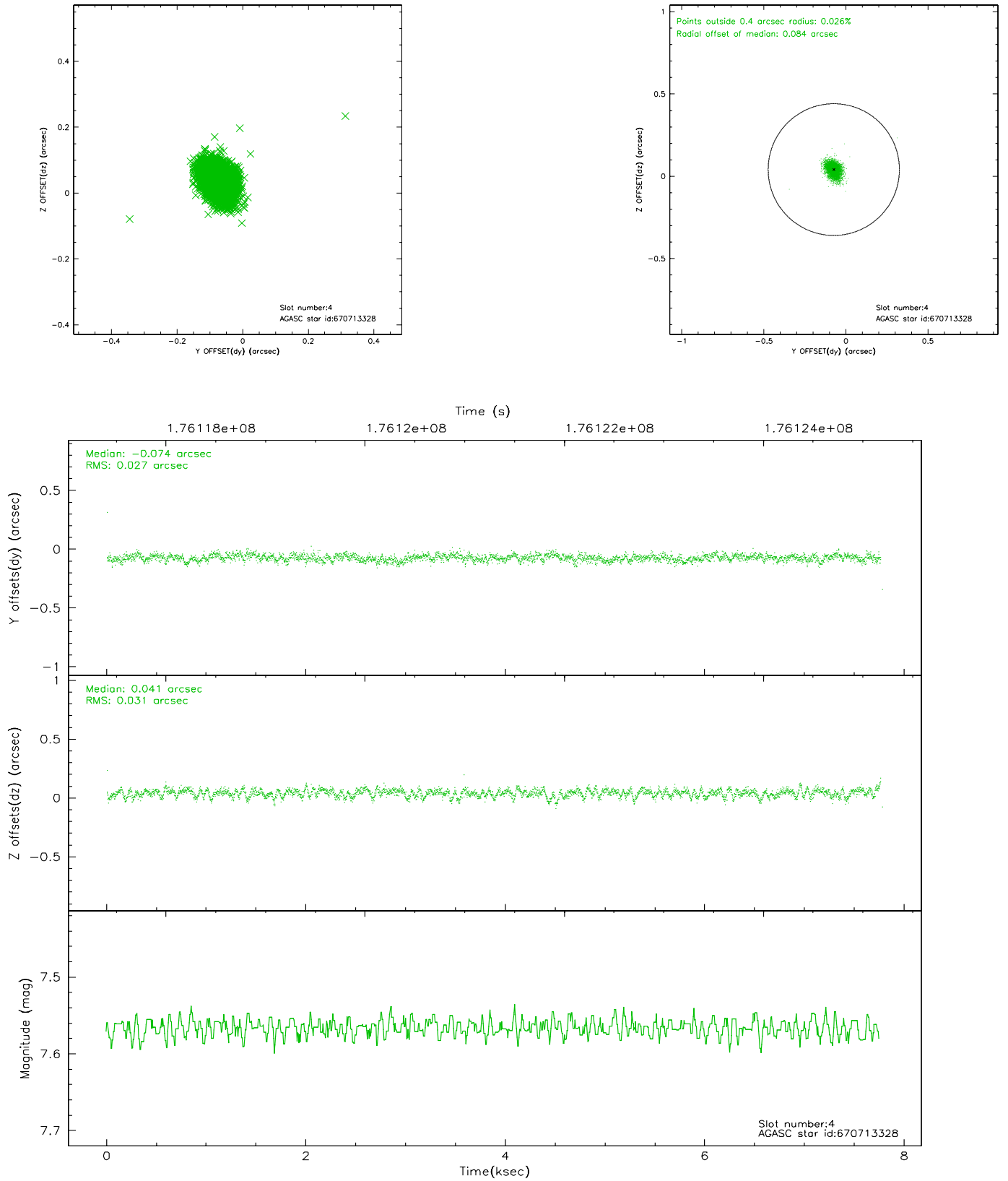
slot	status	id	mag	n_pts	med_dy	med_dz	dr1	dr2	ra	dec	mean_y	mean_z
0	FID	ACIS-S-2	7.10	1897	-0.035	-0.041	0.007	0.011	0.000000	0.000000	-758.50	-1729.64
1	FID	ACIS-S-4	7.20	1897	0.066	0.028	0.006	0.011	0.000000	0.000000	2154.58	178.12
2	FID	ACIS-S-5	7.23	1897	-0.062	0.022	0.007	0.011	0.000000	0.000000	-1810.40	172.67
3	GUIDE	670713072	9.00	3786	0.103	0.136	0.068	0.110	281.205407	-3.604132	2145.55	1149.86
4	GUIDE	670713328	7.57	3786	-0.074	0.041	0.043	0.071	280.824681	-3.187771	1514.80	-778.93
5	GUIDE	670713528	6.48	3786	-0.024	-0.042	0.063	0.101	280.393663	-3.118473	2060.87	-2250.47
6	GUIDE	670714008	9.02	3785	0.058	-0.120	0.070	0.113	281.129237	-3.153193	867.64	111.65
7	GUIDE	670830264	8.75	3784	-0.069	-0.014	0.071	0.110	281.361536	-3.231556	701.85	978.10

2.4 Star Slots

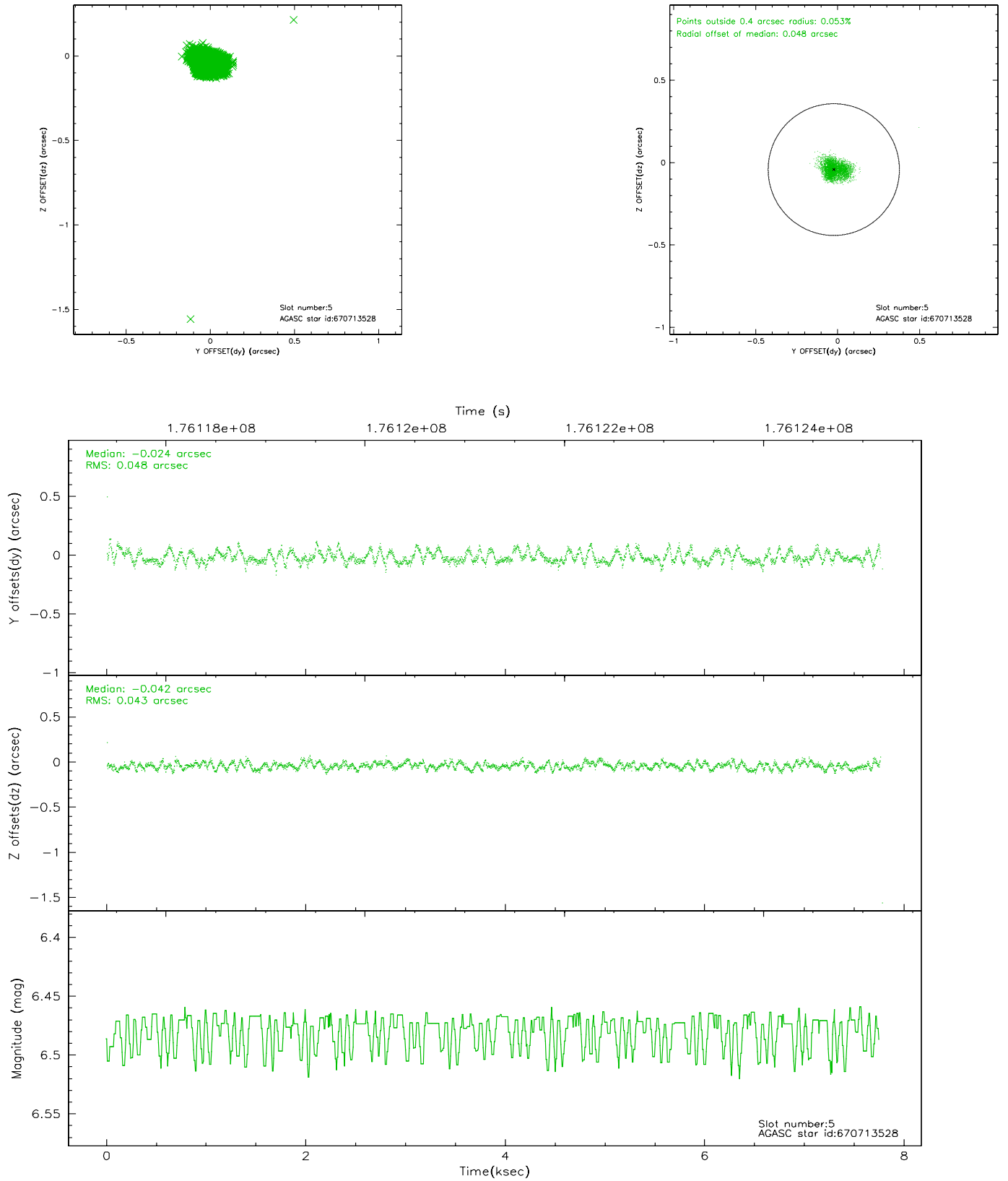
2.4.1 Slot 3



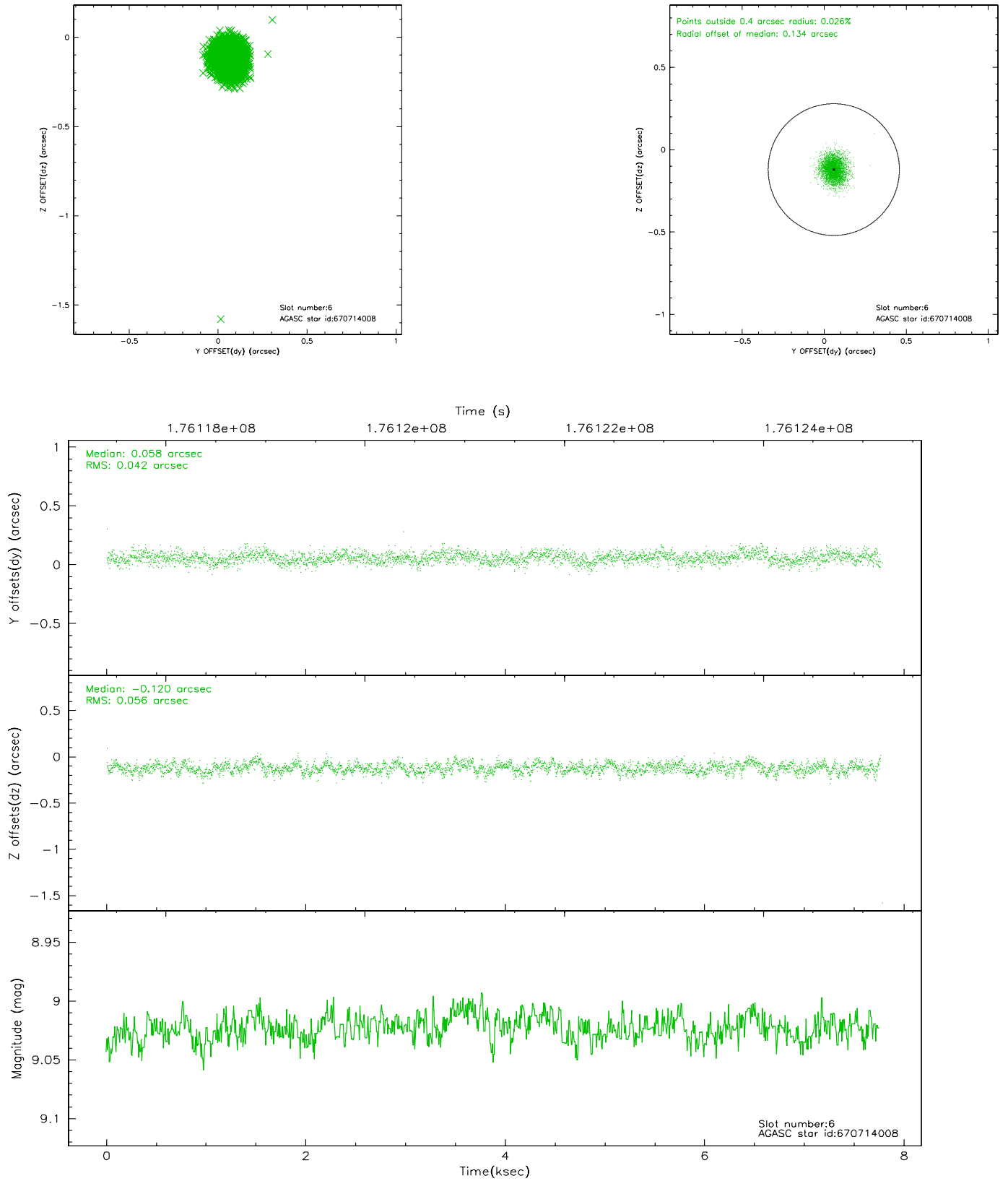
2.4.2 Slot 4



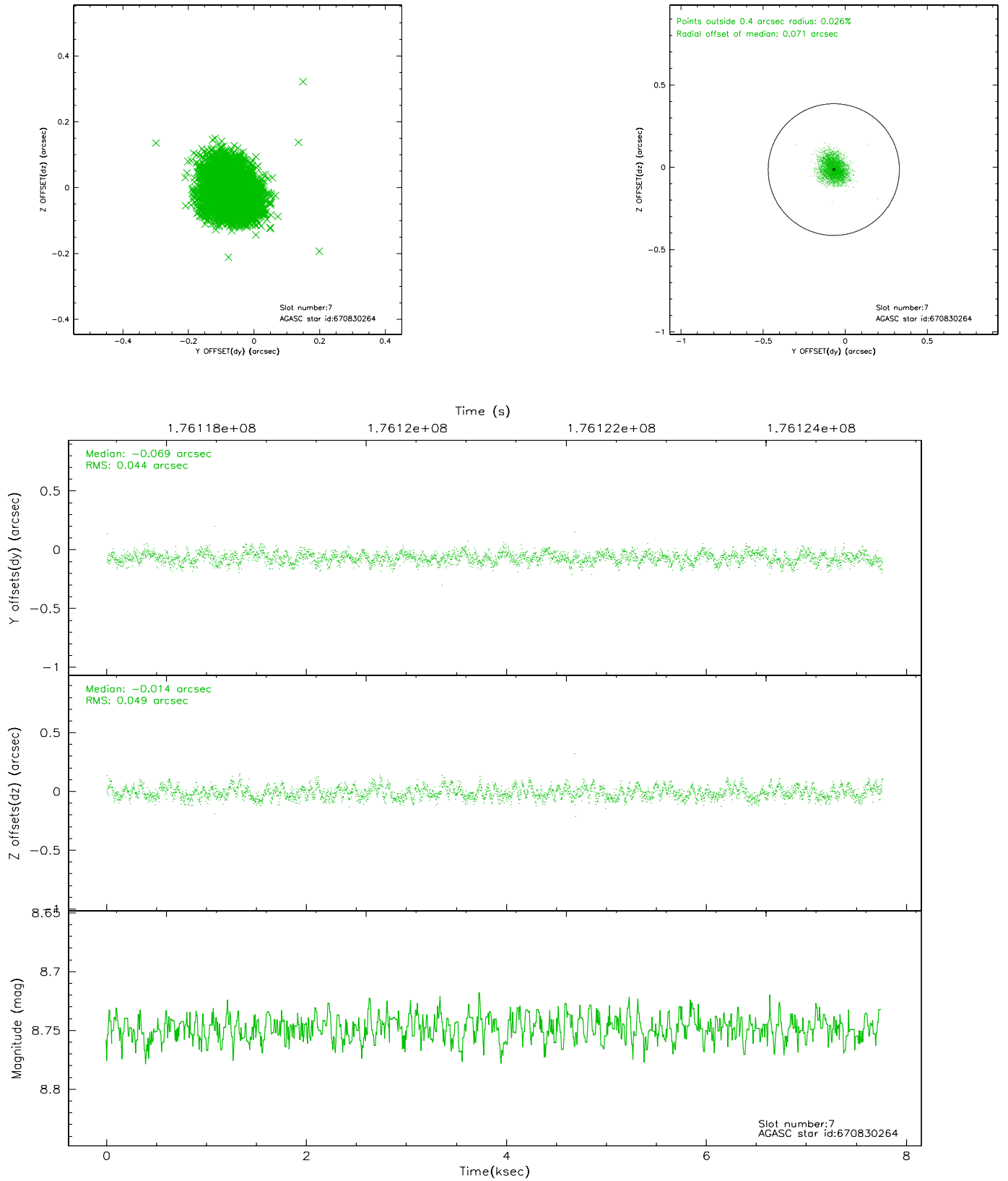
2.4.3 Slot 5



2.4.4 Slot 6

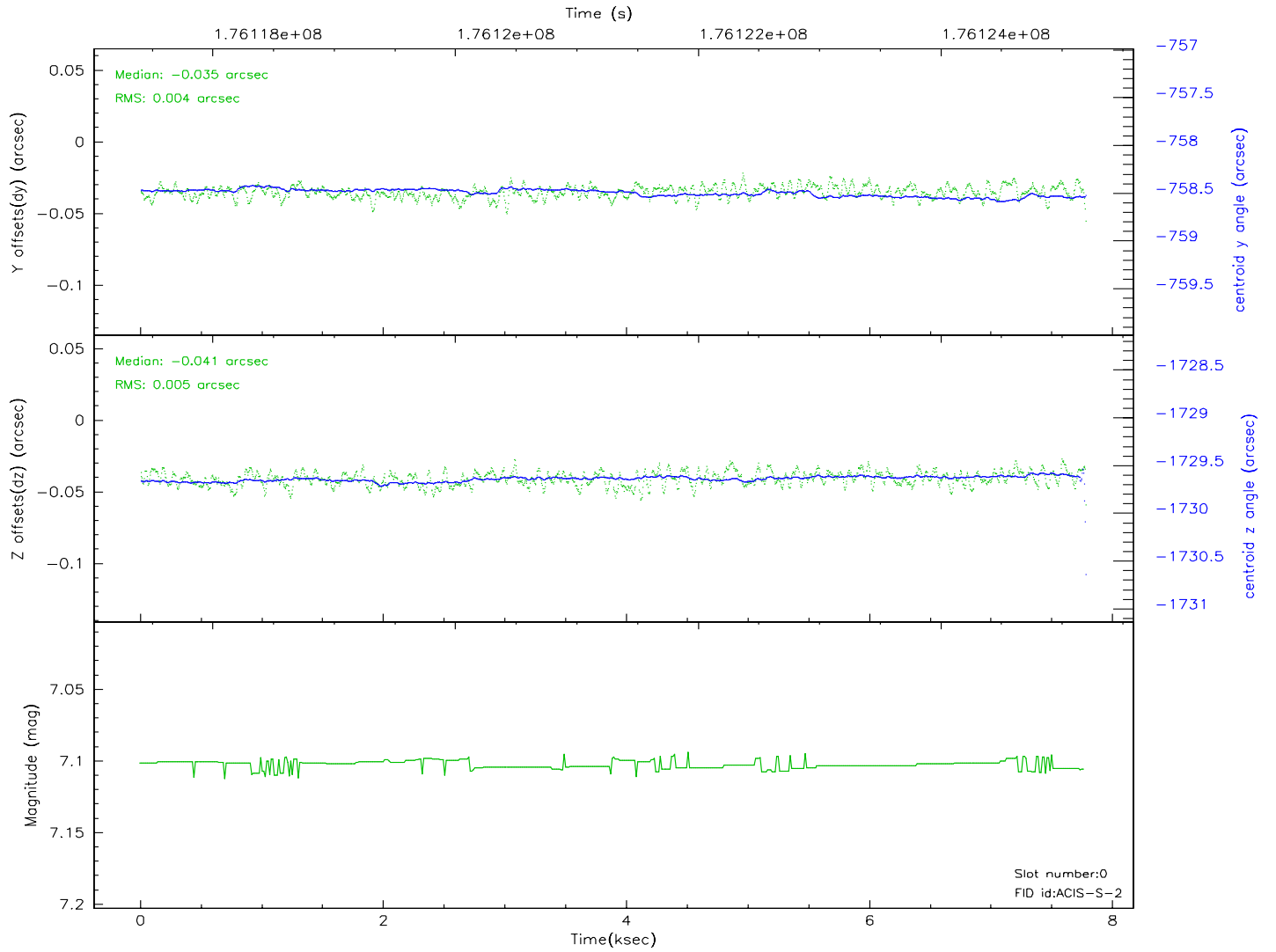
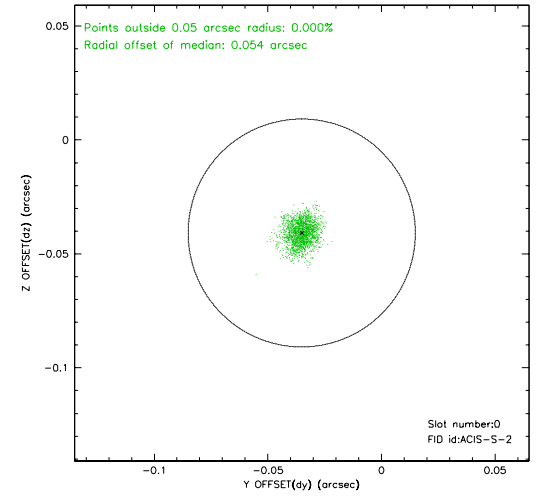
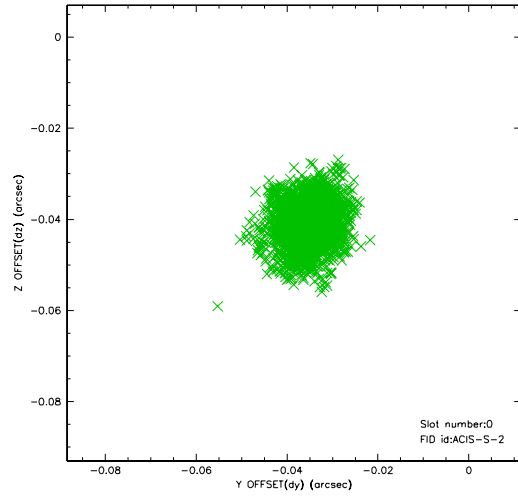


2.4.5 Slot 7

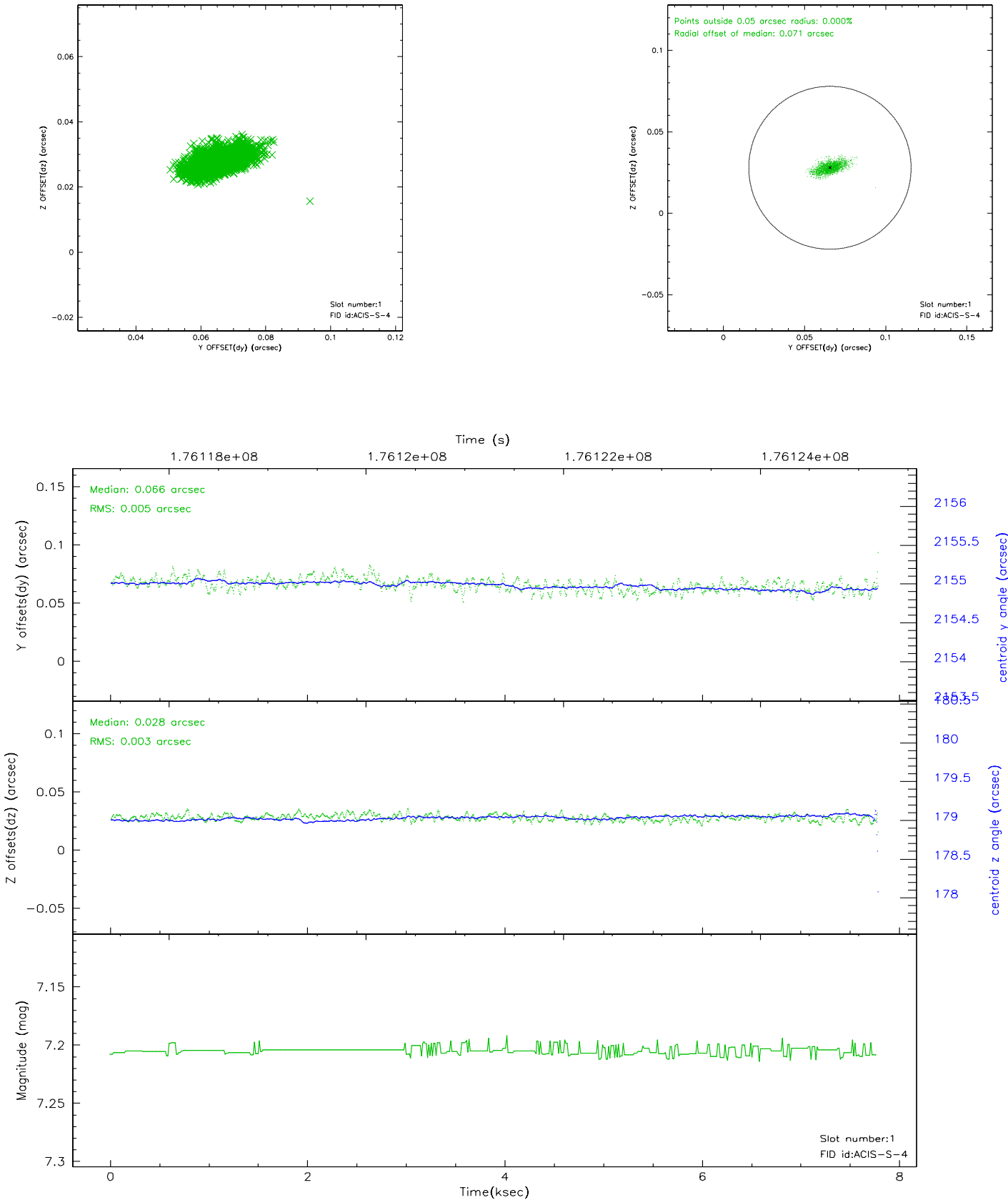


2.5 FID Slots

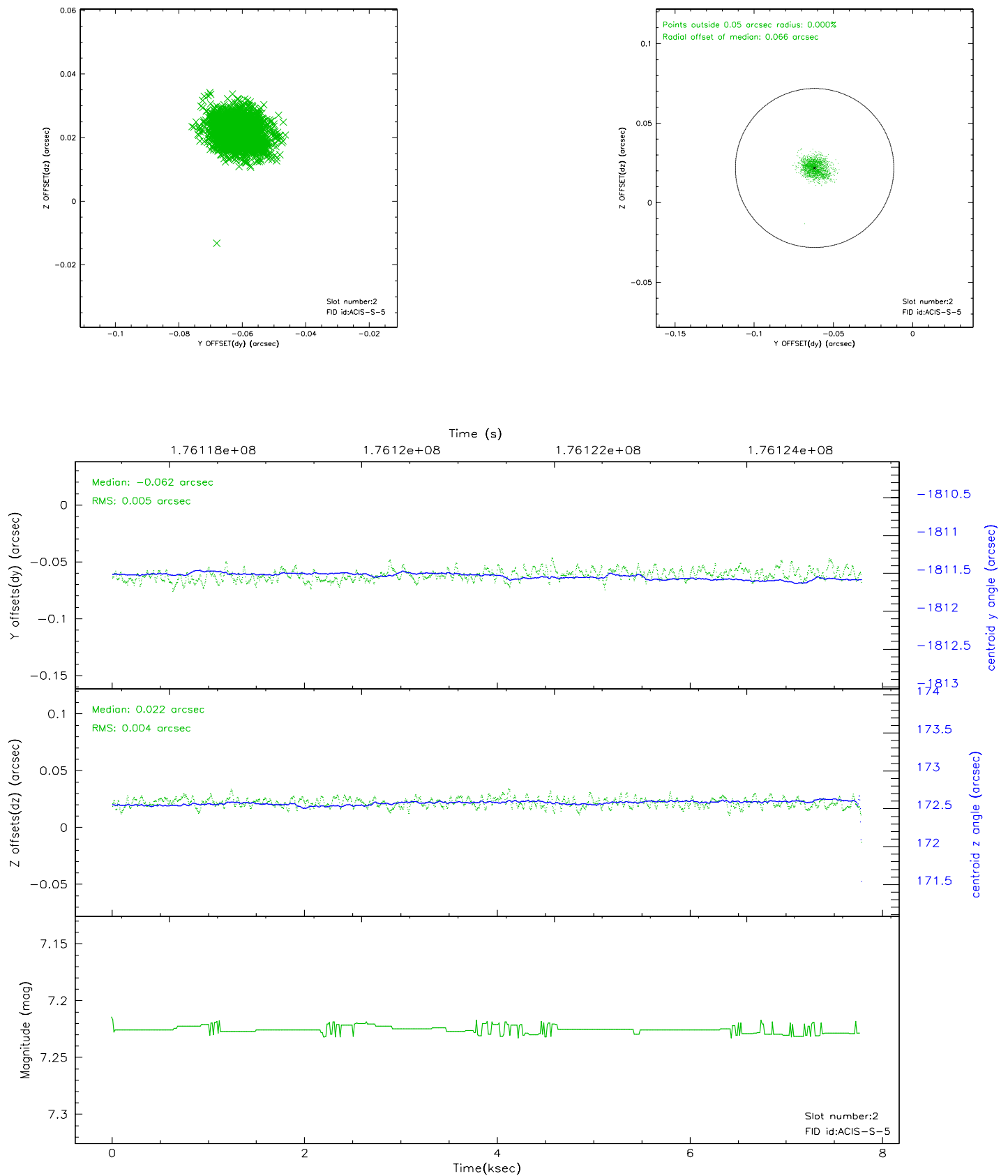
2.5.1 Slot 0



2.5.2 Slot 1



2.5.3 Slot 2



3 Point Sources

A Summary

A.1 Status

V&V Scientist	Beth Sundheim
V&V Date (YYYY-MM-DD)	2009.01.15
V&V Edition	1
V&V Disposition and Status	OK
V&V Charge Time	7.75

A.2 Comments

This observation was interrupted by safing of the science instruments due to high solar radiation environment. The observation was interrupted at 2003:213:11:39:34.