

# V&V Reference Report

## L2 ASCDS Version : 7.6.8

Observation 3888 - L2 Version 001  
Chandra X-Ray Center

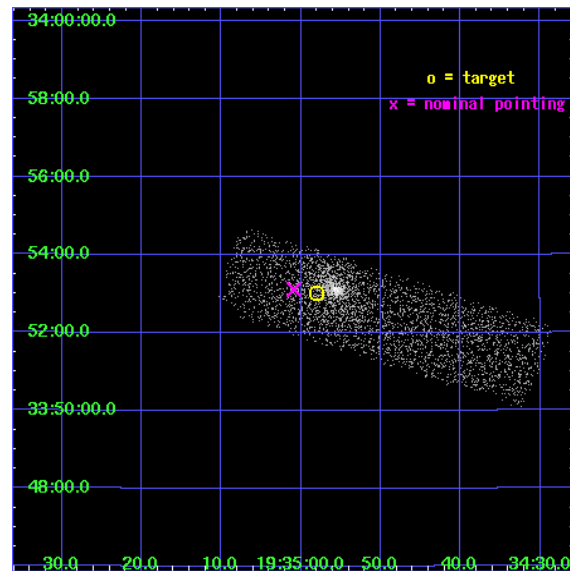
L2 Processing Date : Jul 19 2006

## Contents

<b>1</b>	<b>Front</b>	<b>2</b>
<b>2</b>	<b>OBI</b>	<b>3</b>
2.1	OBI . . . . .	3
2.1.1	Images . . . . .	3
2.1.2	Bias . . . . .	3
2.1.3	Parameters . . . . .	4
2.1.4	Events . . . . .	4
2.2	Compared Parameters . . . . .	5
2.3	Aspect . . . . .	6
2.4	Star Slots . . . . .	9
2.4.1	Slot 3 . . . . .	9
2.4.2	Slot 4 . . . . .	10
2.4.3	Slot 5 . . . . .	11
2.4.4	Slot 6 . . . . .	12
2.4.5	Slot 7 . . . . .	13
2.5	FID Slots . . . . .	14
2.5.1	Slot 0 . . . . .	14
2.5.2	Slot 1 . . . . .	15
2.5.3	Slot 2 . . . . .	16
<b>3</b>	<b>Point Sources</b>	<b>17</b>
<b>A</b>	<b>Summary</b>	<b>18</b>
A.1	Status . . . . .	18
A.2	Comments . . . . .	18

# 1 Front

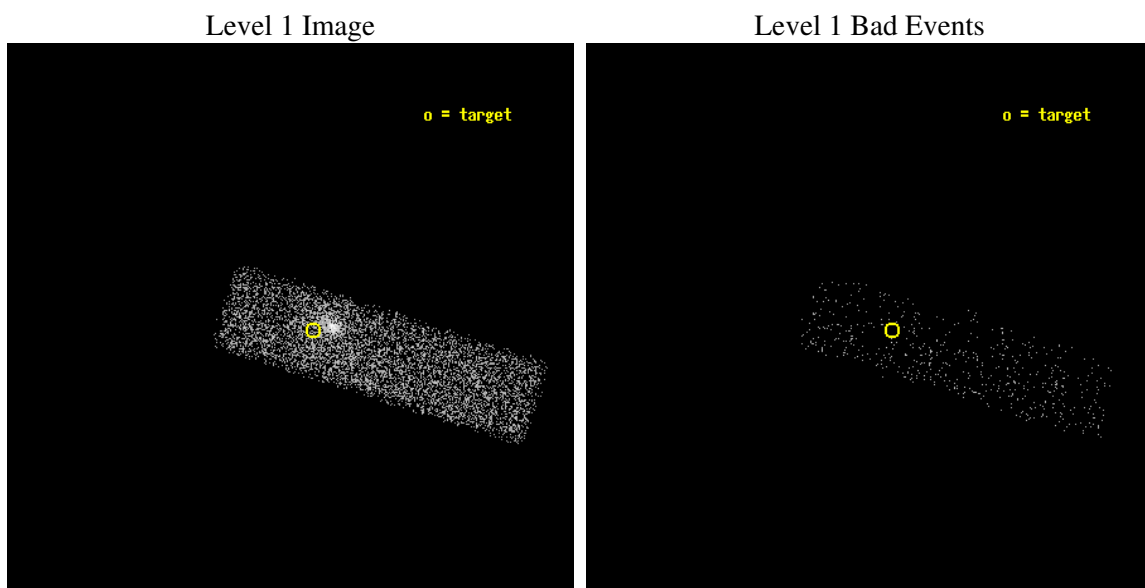
seq_num	500367
obs_id	3888
title	COMPLETING THE CENSUS OF COMPACT OBJECTS IN SUPERNOVA REMNANTS
observer	Dr David Kaplan
object	RX J193458.1+335301
dtcycle	0
cycle	P
ra_targ	293.742083
dec_targ	33.88375
ra_nom	293.75381554864
dec_nom	33.88497009179
roll_nom	17.390098182977
revision	2
ontime	3463.2000516057
livetime	3294.2072211602
ontime7	3463.2000516057
l2events	4137



## 2 OBI

### 2.1 OBI

#### 2.1.1 Images



#### 2.1.2 Bias

Chip 7



### 2.1.3 Parameters

obi_num	0
ascdsver	7.6.8
caldbver	3.2.2
date	2006-07-19T11:12:37
revision	2

sched_exp_time	3000.000000
ontime	3830.8896706402
ontime7	3830.8896706402
l1events	9143

### 2.1.4 Events

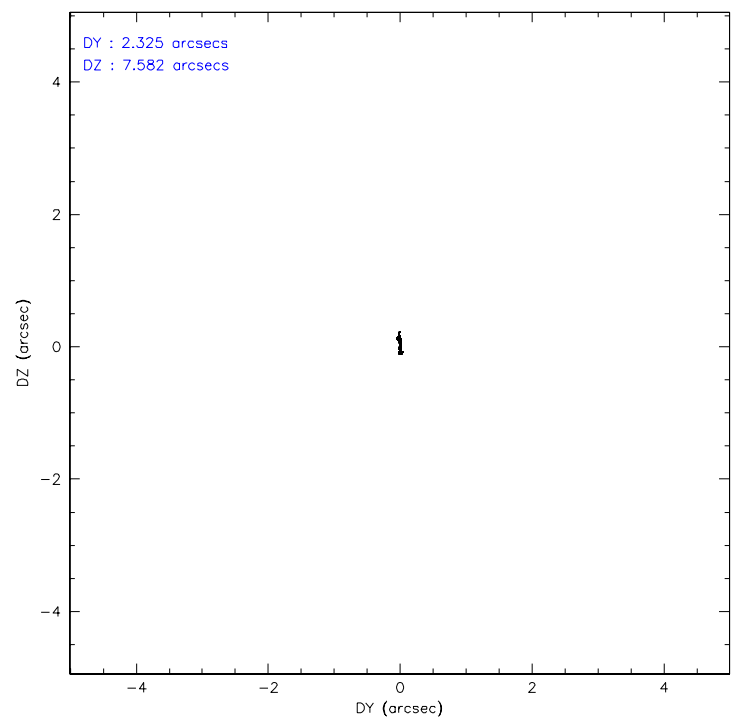
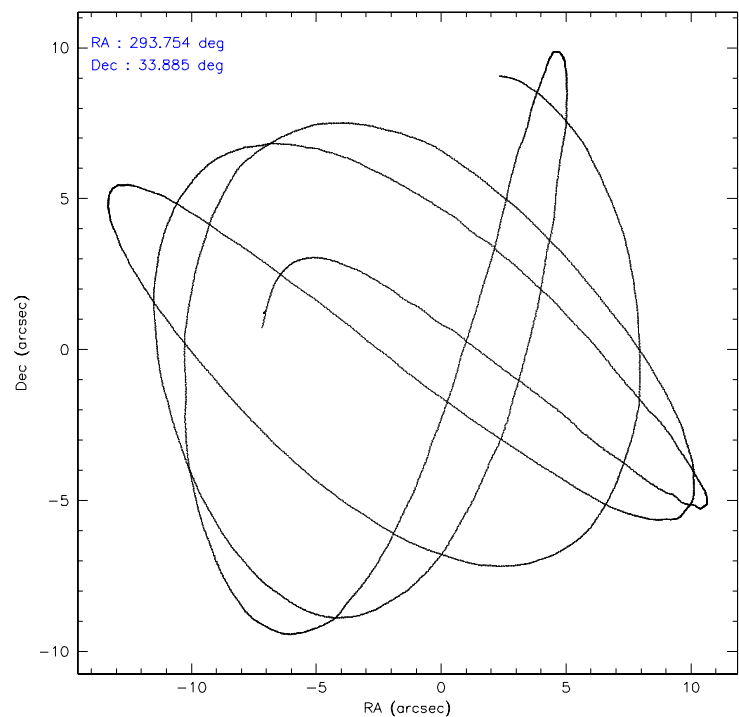
	<b>ccd 7</b>
level 1 events	9143
rejected events	4903
rejected %	53%

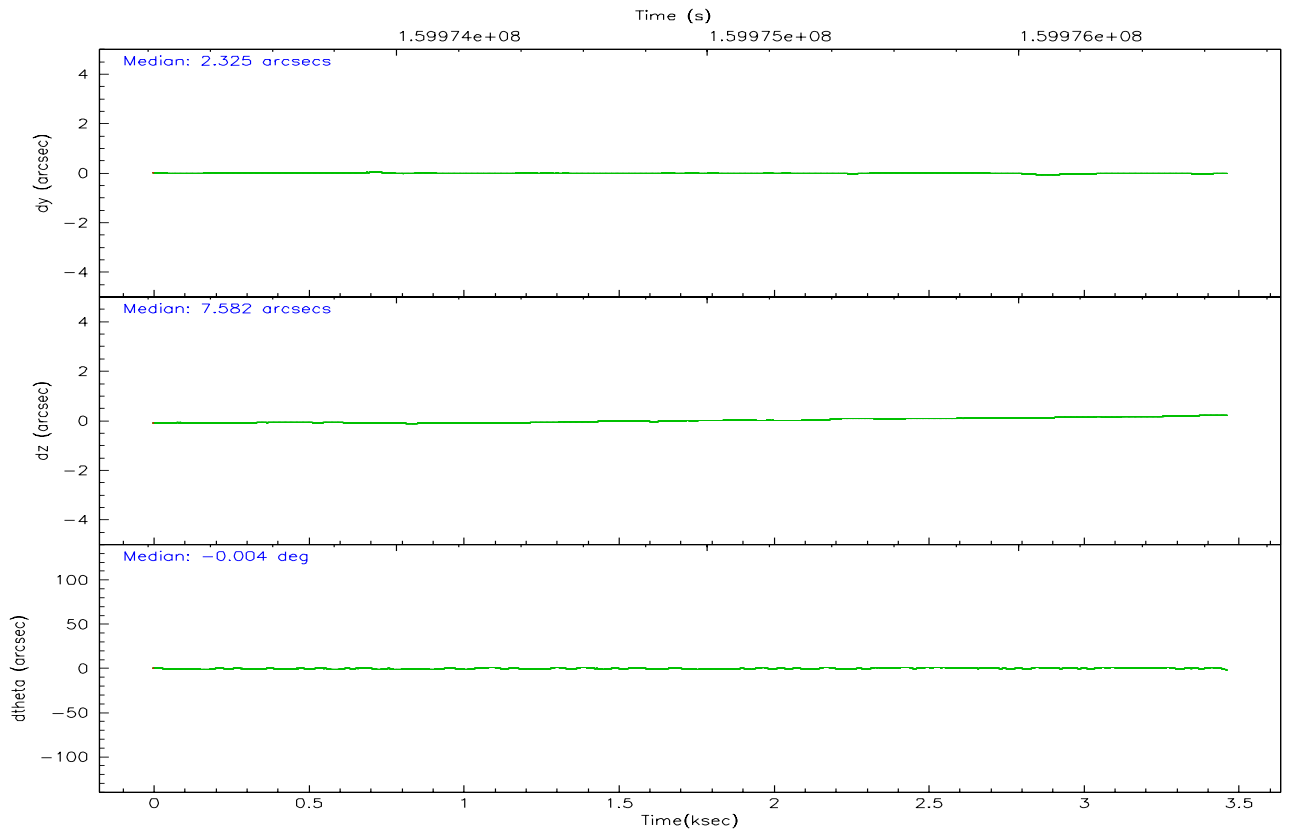
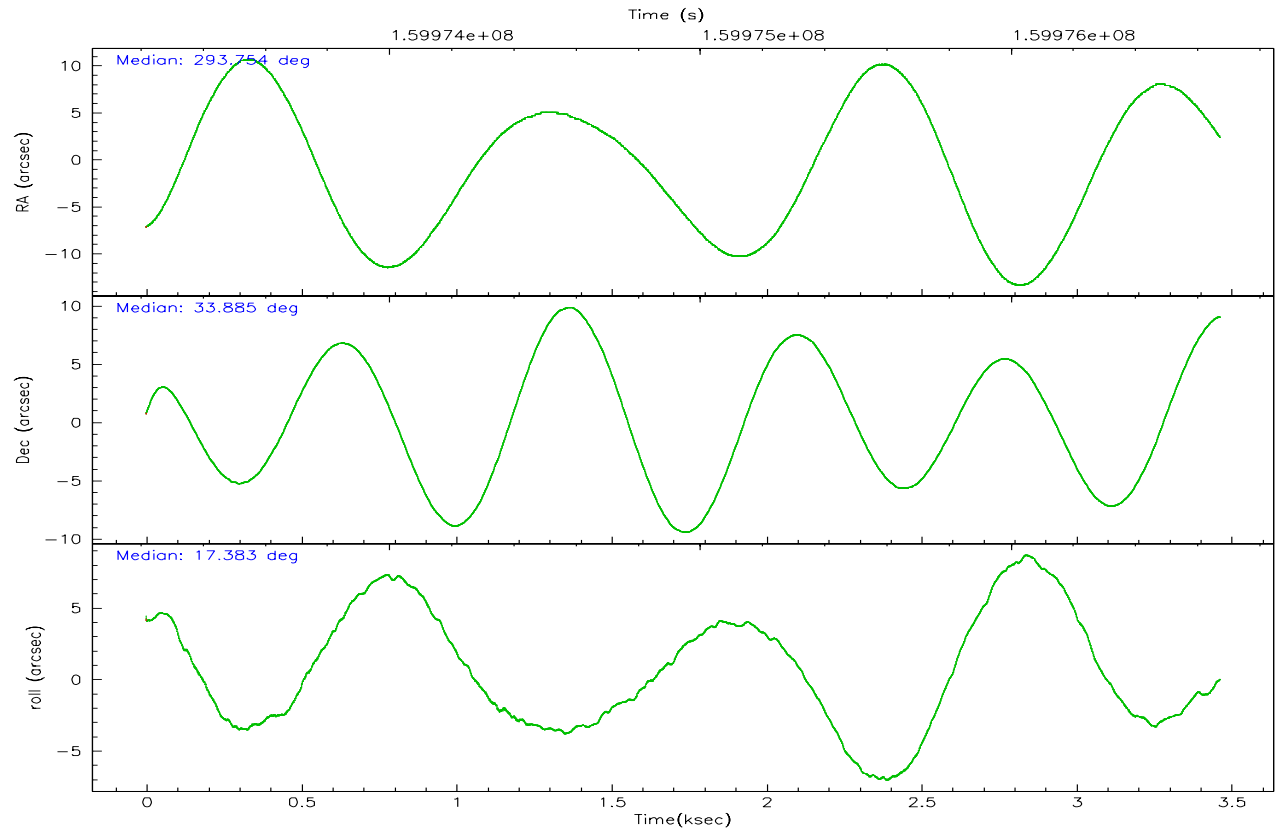
	<b>ccd 7</b>
grade 0 events	572
	6%
grade 1 events	8
	0%
grade 2 events	1138
	12%
grade 3 events	444
	4%
grade 4 events	369
	4%
grade 5 events	566
	6%
grade 6 events	2092
	22%
grade 7 events	3954
	43%

## 2.2 Compared Parameters

Parameter	Planned	Actual	Parameter	Planned	Actual
Instrument	ACIS	ACIS	Obspar format version number	6	6
Detector	ACIS-7	ACIS-7	Obspar file type	PREDICTED	ACTUAL
Grating	NONE	NONE	Obspar update status	NONE	UPDATED
Data mode	FAINT	FAINT	On-chip summing requested	N	N
Observation mode	POINTING	POINTING	Subarray requested	1/4	1/4
Pointing RA	293.731761	293.7538155486379	Subarray start row	0	385
Pointing Dec	33.864687	33.88497009179007	Subarray row count	1024	256
Pointing Roll	17.245785	17.3900981829766	Alternating exposures requested	N	N
SIM focus pos (mm)	-0.684267	-0.6828225247311905	Primary exposure time	0.000000	0.8
SIM defocus (mm)	0	0.001444936568705701			
SIM translation stage pos (mm)	-190.132523	-190.1400660498719			
SIM translation stage offset (mm)	0	0.00754346686406393			
Observation start time	159973677.184000	159972575.89709			
Observation start date	2003-01-26T13:06:53	2003-01-26T12:49:35			
Observation end time	159976677.184000	159977044.38478			
Observation end date	2003-01-26T13:56:53	2003-01-26T14:04:04			
Read mode	TIMED	TIMED			

2.3 Aspect





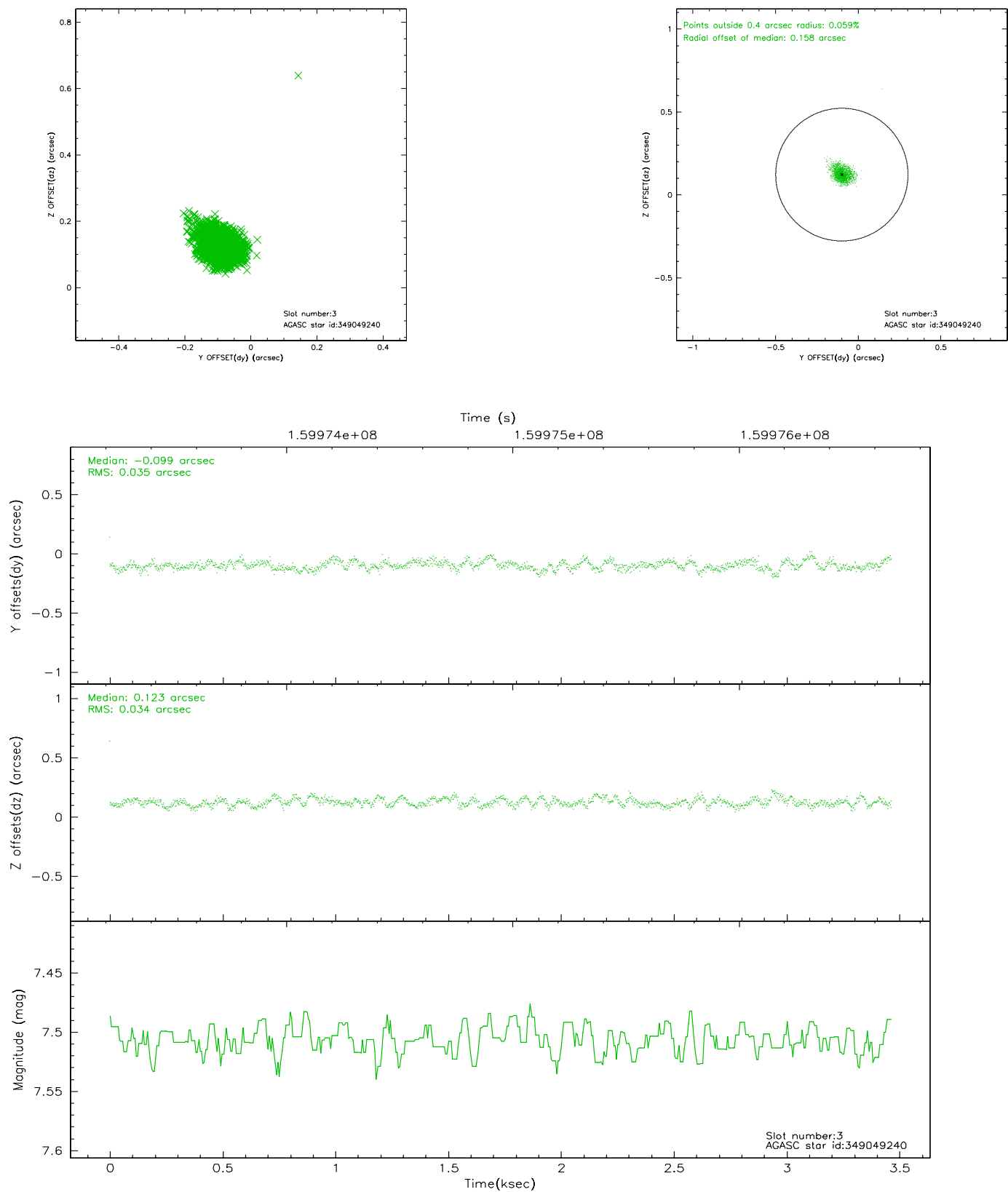
### Slot Statistics

slot	status	id	mag	n_pts	med_dy	med_dz	dr1	dr2	ra	dec	mean_y	mean_z
0	FID	ACIS-S-1	7.18	846	0.029	-0.011	0.007	0.014	0.000000	0.000000	941.09	-1724.44
1	FID	ACIS-S-4	7.20	846	-0.079	-0.002	0.006	0.011	0.000000	0.000000	2159.43	177.84
2	FID	ACIS-S-5	7.23	845	0.024	0.026	0.005	0.010	0.000000	0.000000	-1805.41	173.58
3	GUIDE	349049240	7.51	1691	-0.099	0.123	0.050	0.080	294.496757	33.893272	2215.55	-570.41
4	GUIDE	349052864	9.42	1691	0.071	-0.109	0.120	0.197	293.343185	34.417801	-510.56	2245.65
5	GUIDE	348520960	8.16	1691	0.015	0.003	0.054	0.089	293.224165	33.410045	-1941.67	-1105.74
6	GUIDE	348522352	9.30	1691	-0.082	0.071	0.078	0.123	294.218795	33.547289	1056.38	-1521.35
7	GUIDE	349049576	9.17	1689	0.096	-0.088	0.108	0.186	293.157808	34.309167	-1154.18	2037.95

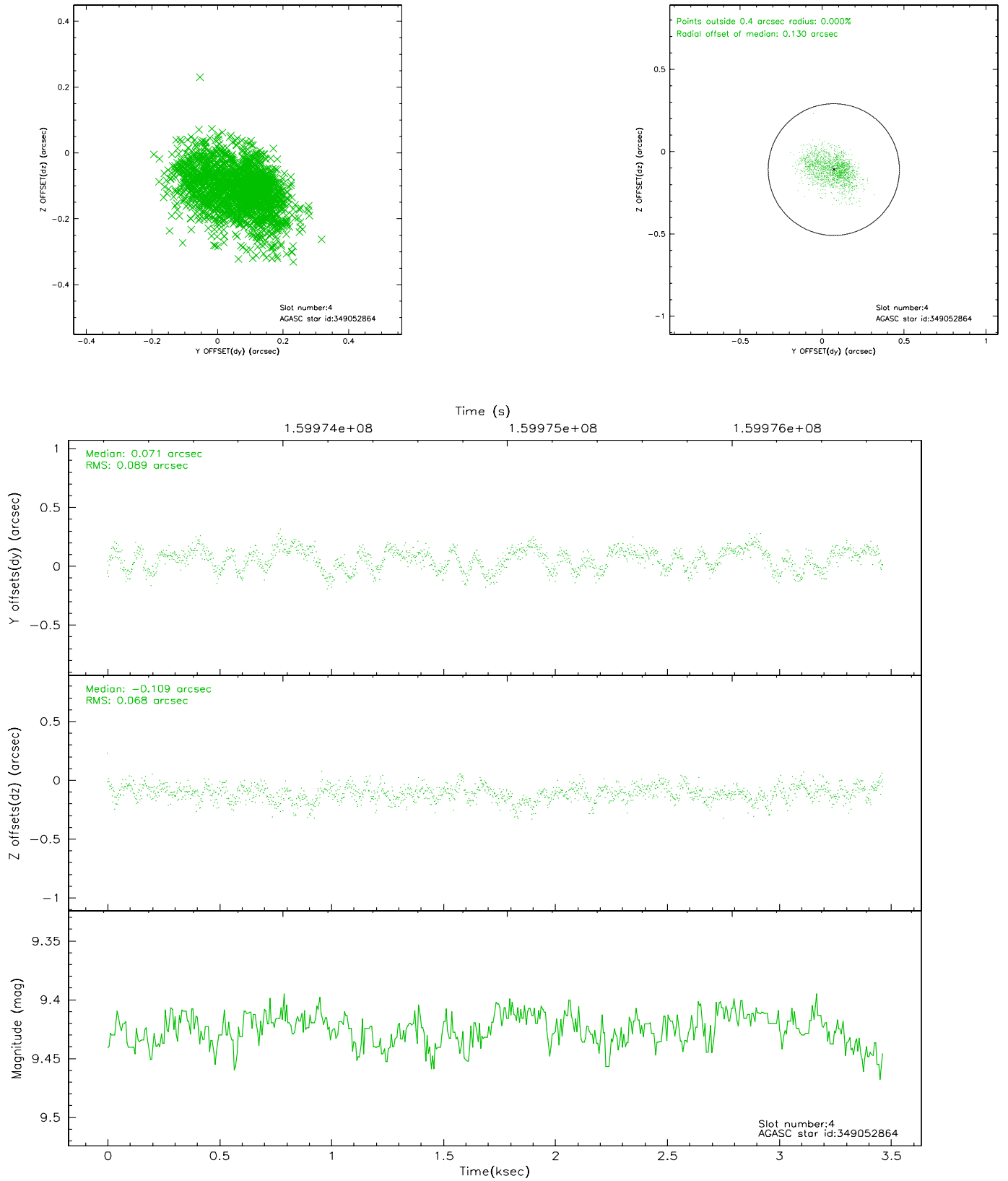


## 2.4 Star Slots

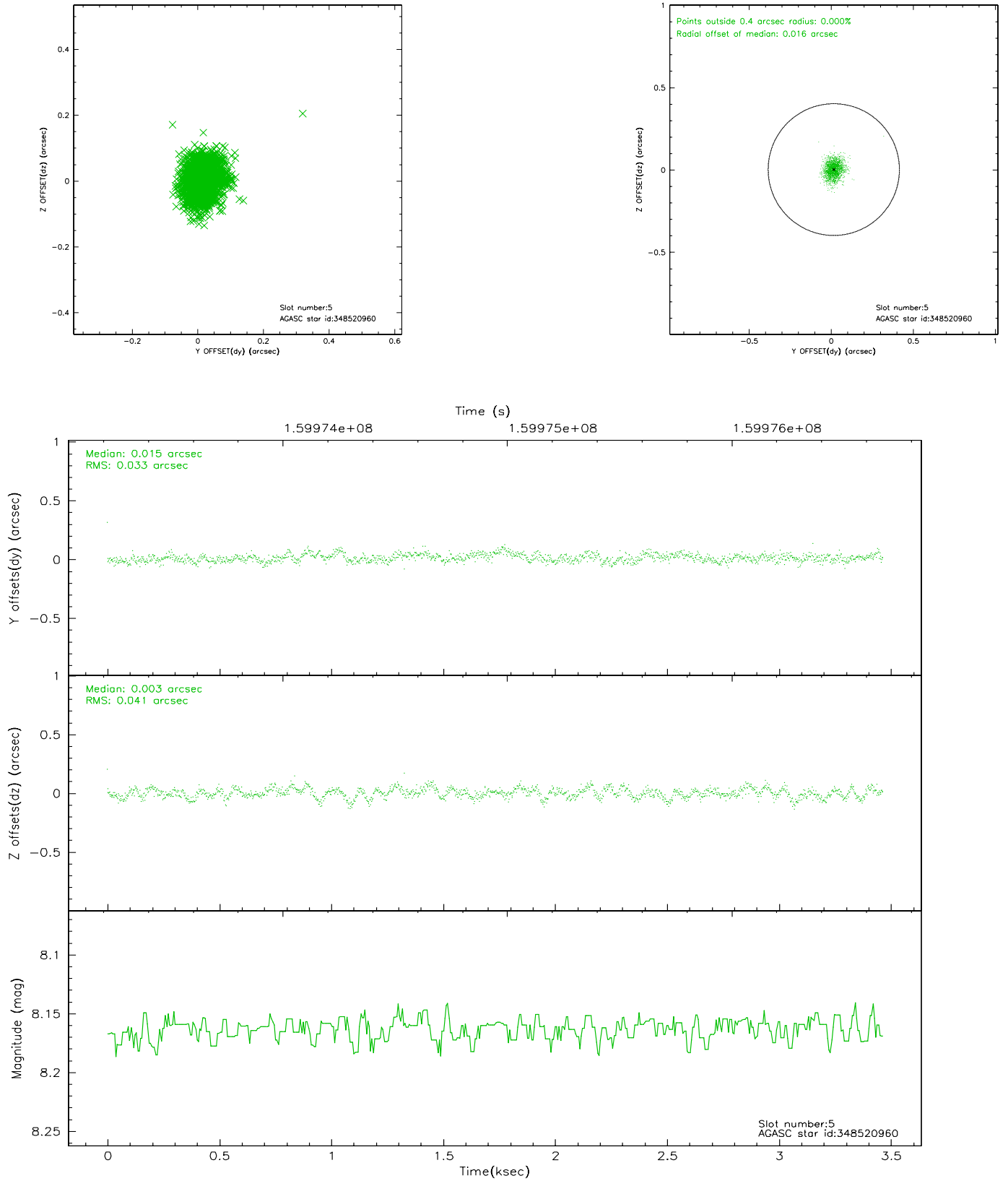
### 2.4.1 Slot 3



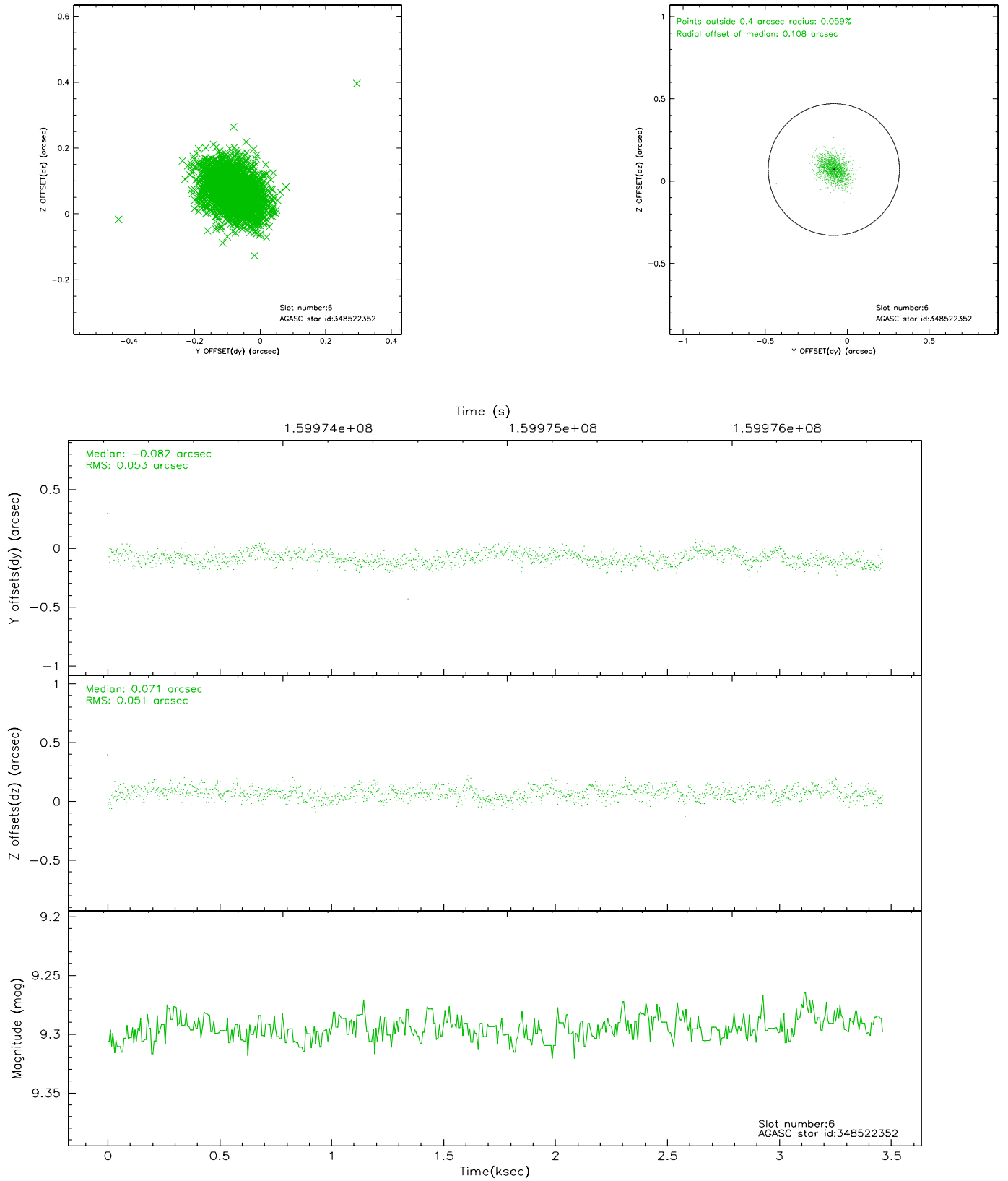
## 2.4.2 Slot 4



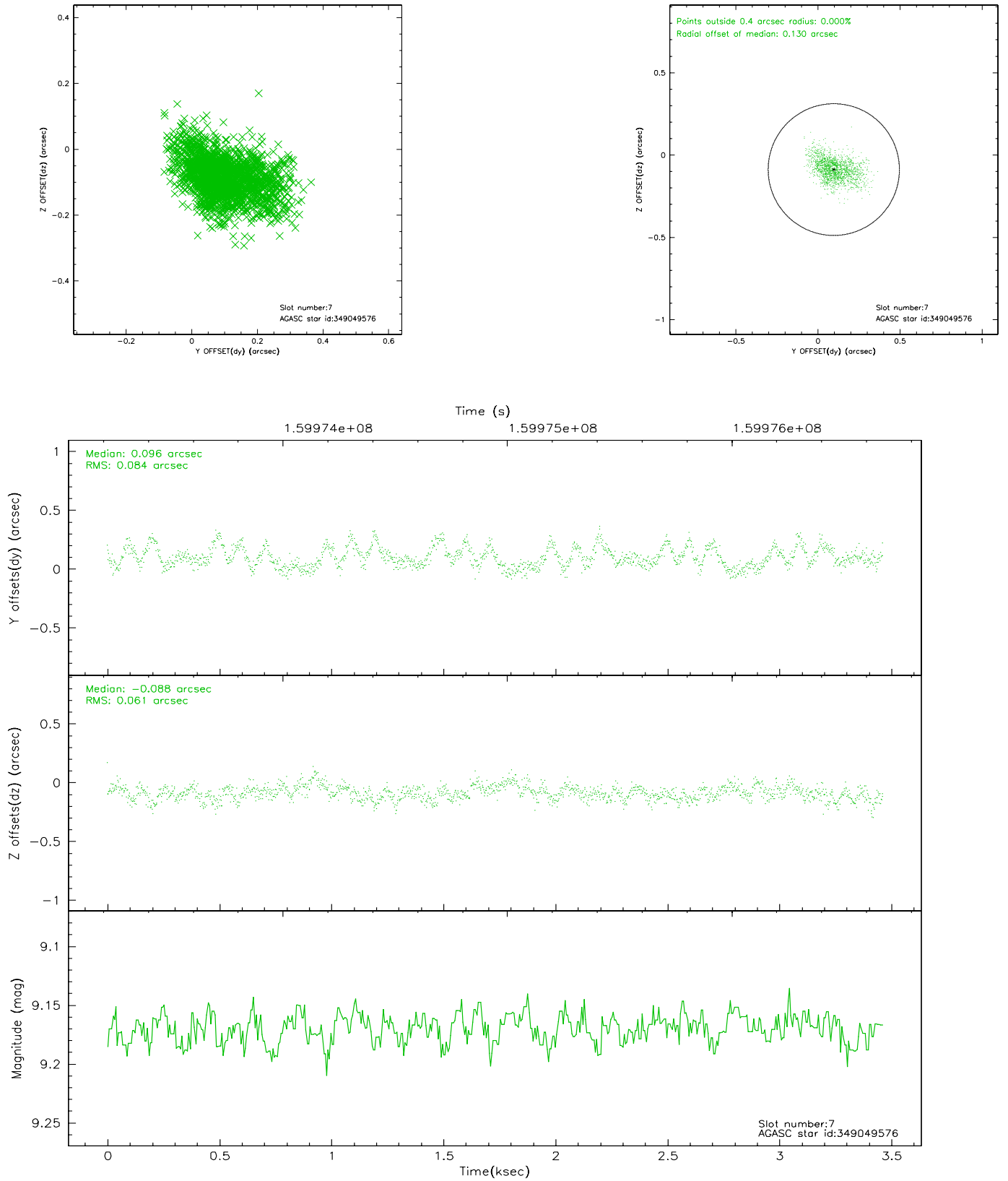
### 2.4.3 Slot 5



## 2.4.4 Slot 6

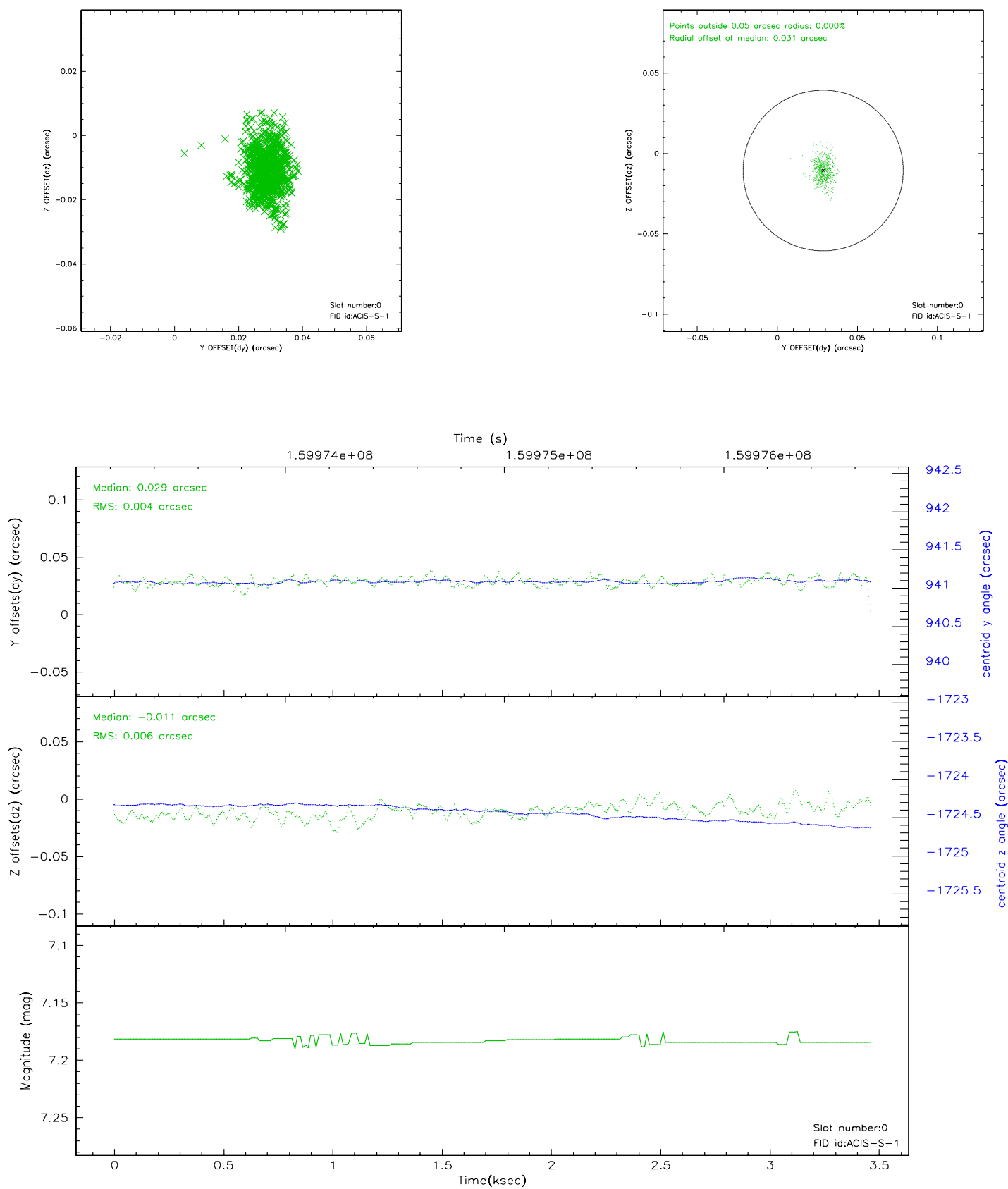


## 2.4.5 Slot 7

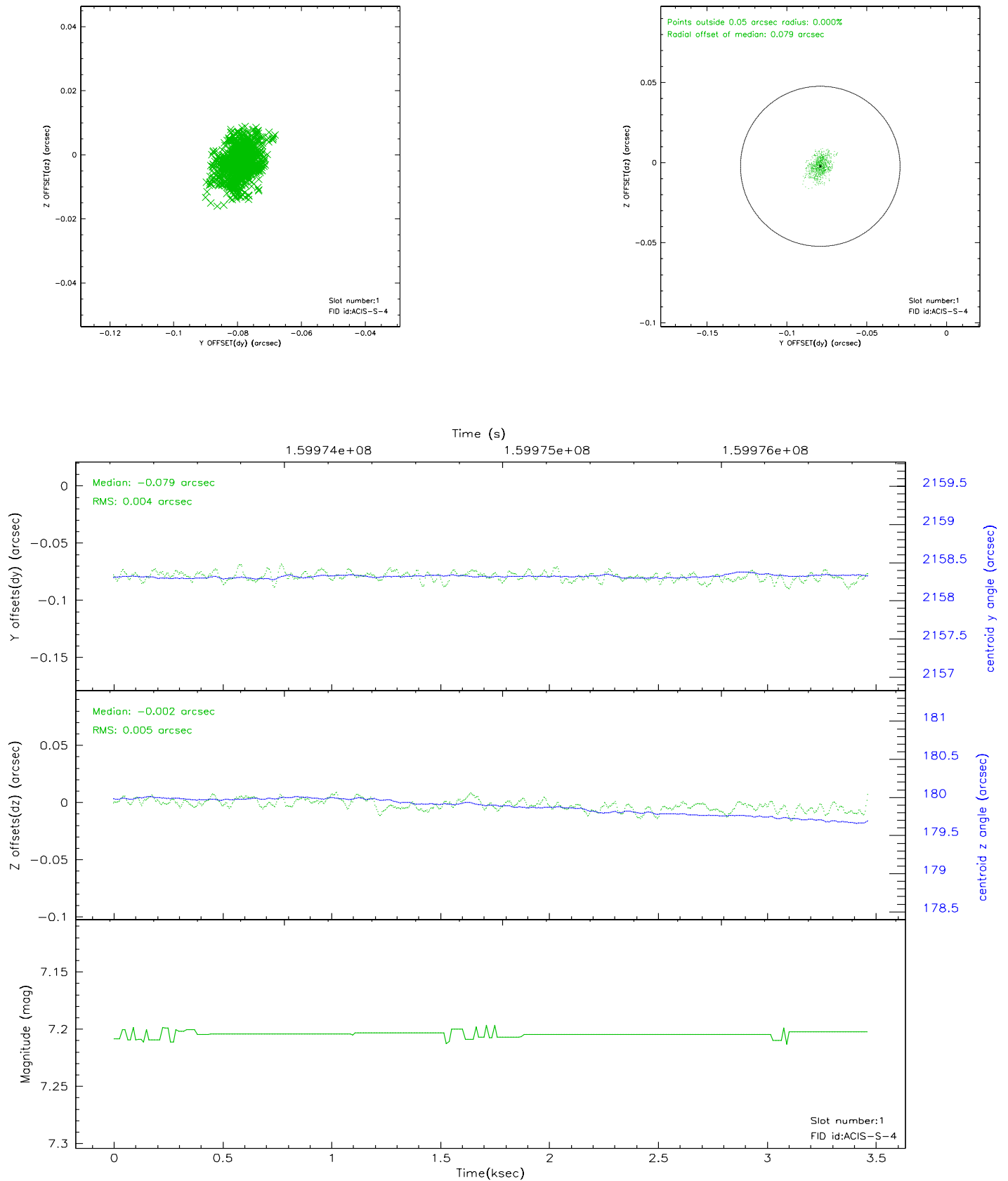


## 2.5 FID Slots

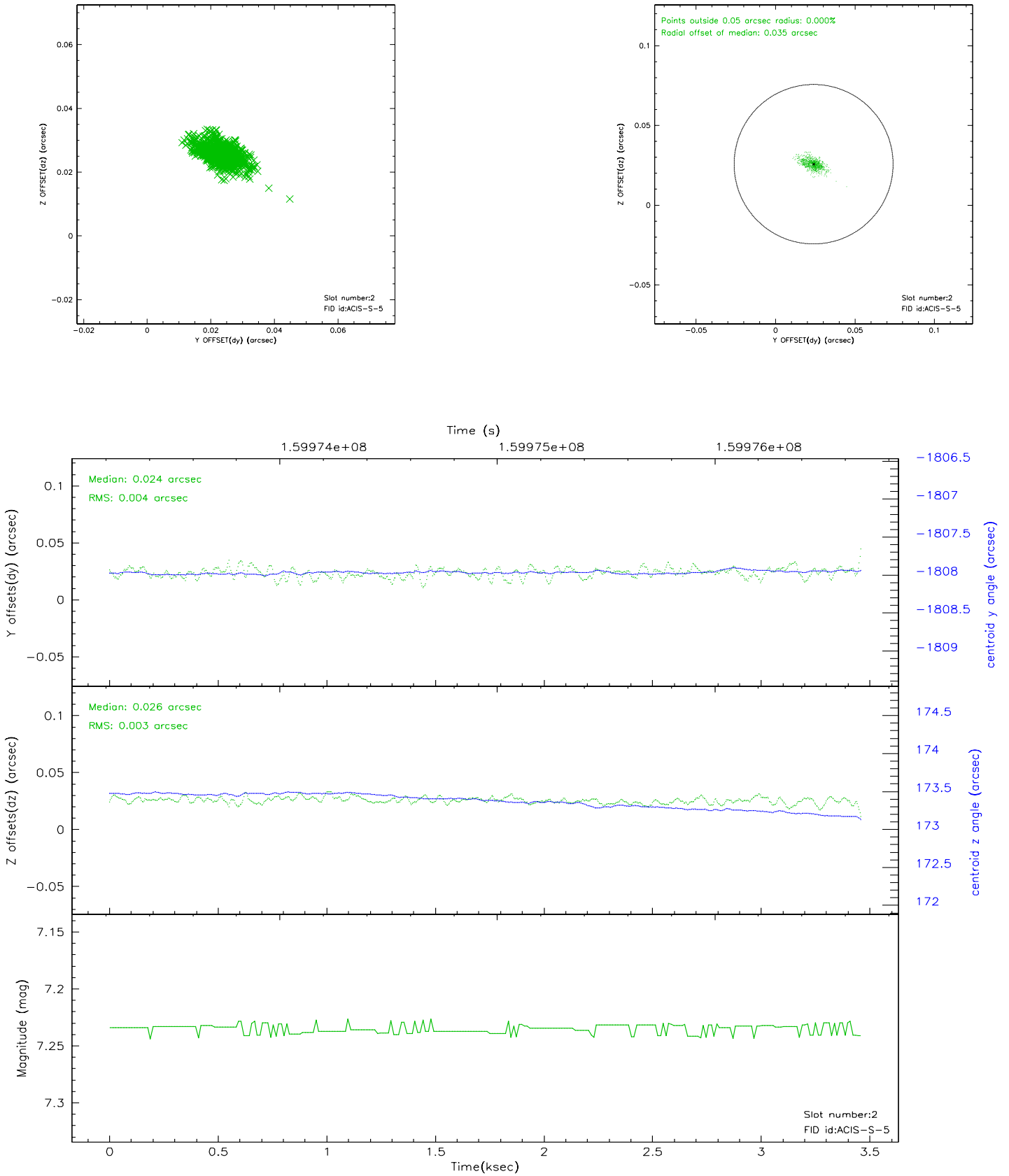
### 2.5.1 Slot 0



## 2.5.2 Slot 1



### 2.5.3 Slot 2





### 3 Point Sources

## A Summary

### A.1 Status

V&V Scientist	Jen Lauer
V&V Date (YYYY-MM-DD)	2006.07.19
V&V Edition	1
V&V Disposition and Status	OK
V&V Charge Time	3.463

### A.2 Comments