

V&V Reference Report

L2 ASCDS Version : 7.6.8

Observation 3884 - L2 Version 001
Chandra X-Ray Center

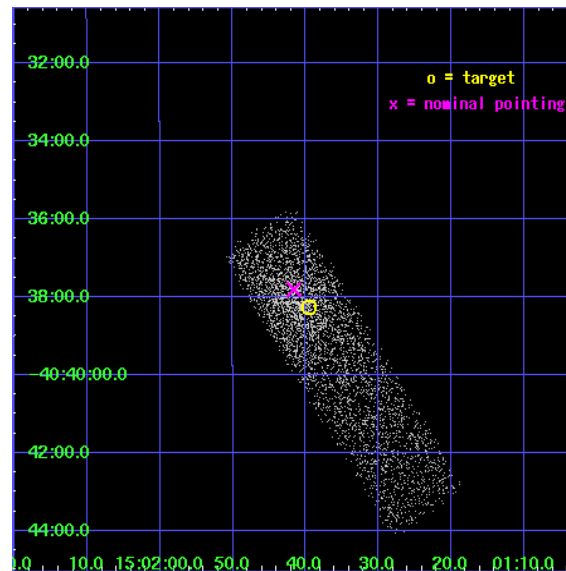
L2 Processing Date : Jul 24 2006

Contents

1	Front	2
2	OBI	3
2.1	OBI	3
2.1.1	Images	3
2.1.2	Bias	3
2.1.3	Parameters	4
2.1.4	Events	4
2.2	Compared Parameters	5
2.3	Aspect	6
2.4	Star Slots	9
2.4.1	Slot 3	9
2.4.2	Slot 4	10
2.4.3	Slot 5	11
2.4.4	Slot 6	12
2.4.5	Slot 7	13
2.5	FID Slots	14
2.5.1	Slot 0	14
2.5.2	Slot 1	15
2.5.3	Slot 2	16
3	Point Sources	17
A	Summary	18
A.1	Status	18
A.2	Comments	18

1 Front

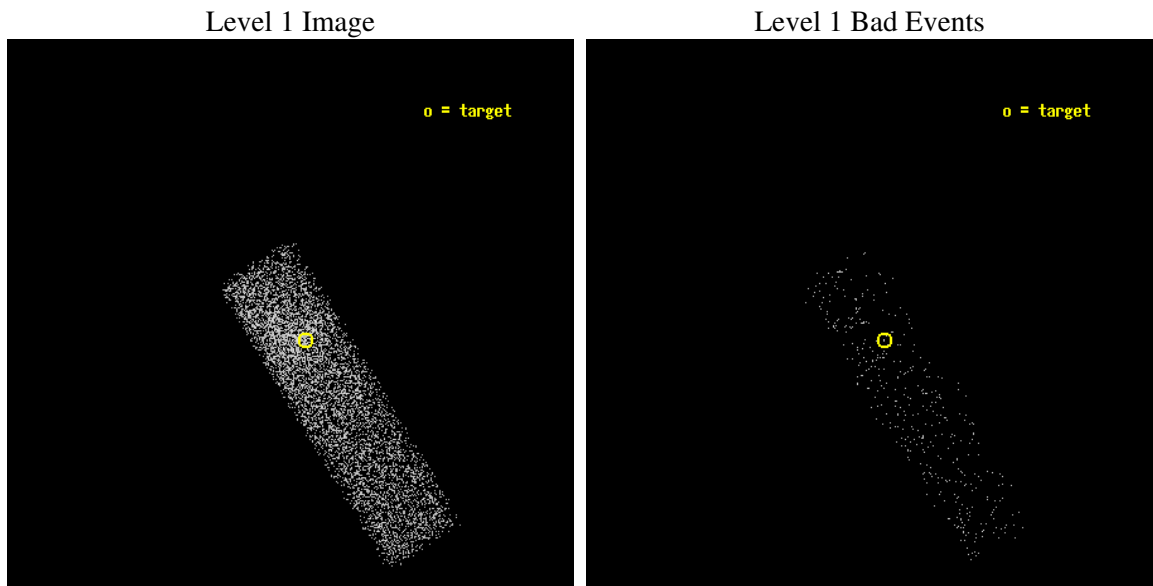
seq_num	500363
obs_id	3884
title	COMPLETING THE CENSUS OF COMPACT OBJECTS IN SUPERNOVA REMNANTS
observer	Dr David Kaplan
object	RX J150139.6-403815
dtcycle	0
cycle	P
ra_targ	225.415
dec_targ	-40.6375
ra_nom	225.42346061089
dec_nom	-40.630228484403
roll_nom	58.598815861416
revision	2
ontime	2880.8000429273
livetime	2740.2264272113
ontime7	2880.8000429273
l2events	4406



2 OBI

2.1 OBI

2.1.1 Images



2.1.2 Bias

Chip 7



2.1.3 Parameters

obi_num	0
ascdsver	7.6.8
caldsver	3.2.2
date	2006-07-25T00:20:24
revision	2

sched_exp_time	3029.000000
ontime	2882.212351352
ontime7	2882.212351352
ll events	7963

2.1.4 Events

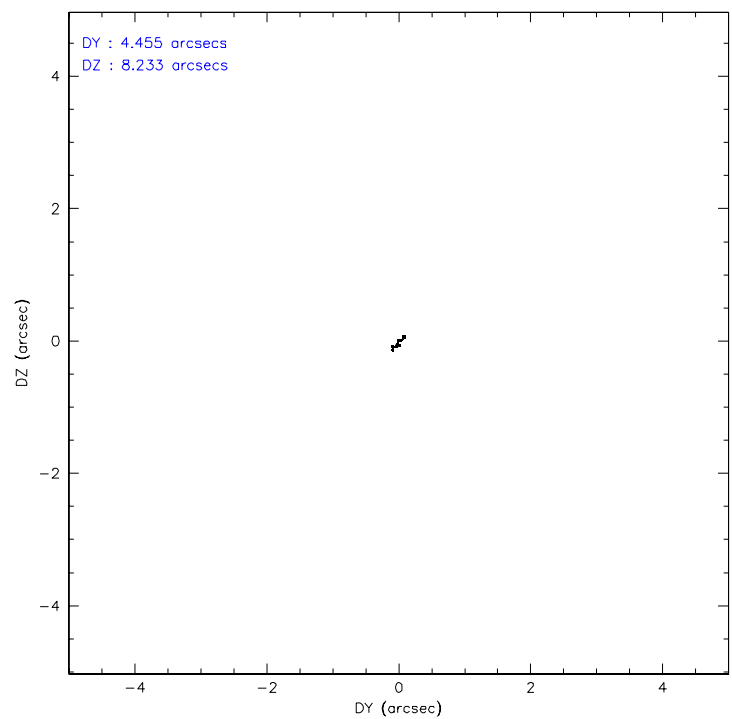
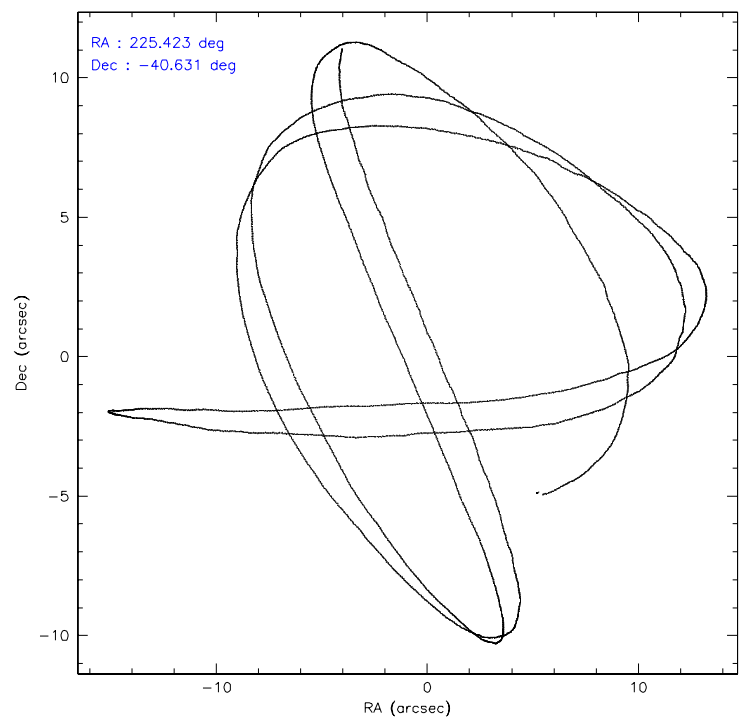
	ccd 7
level 1 events	7963
rejected events	3446
rejected %	43%

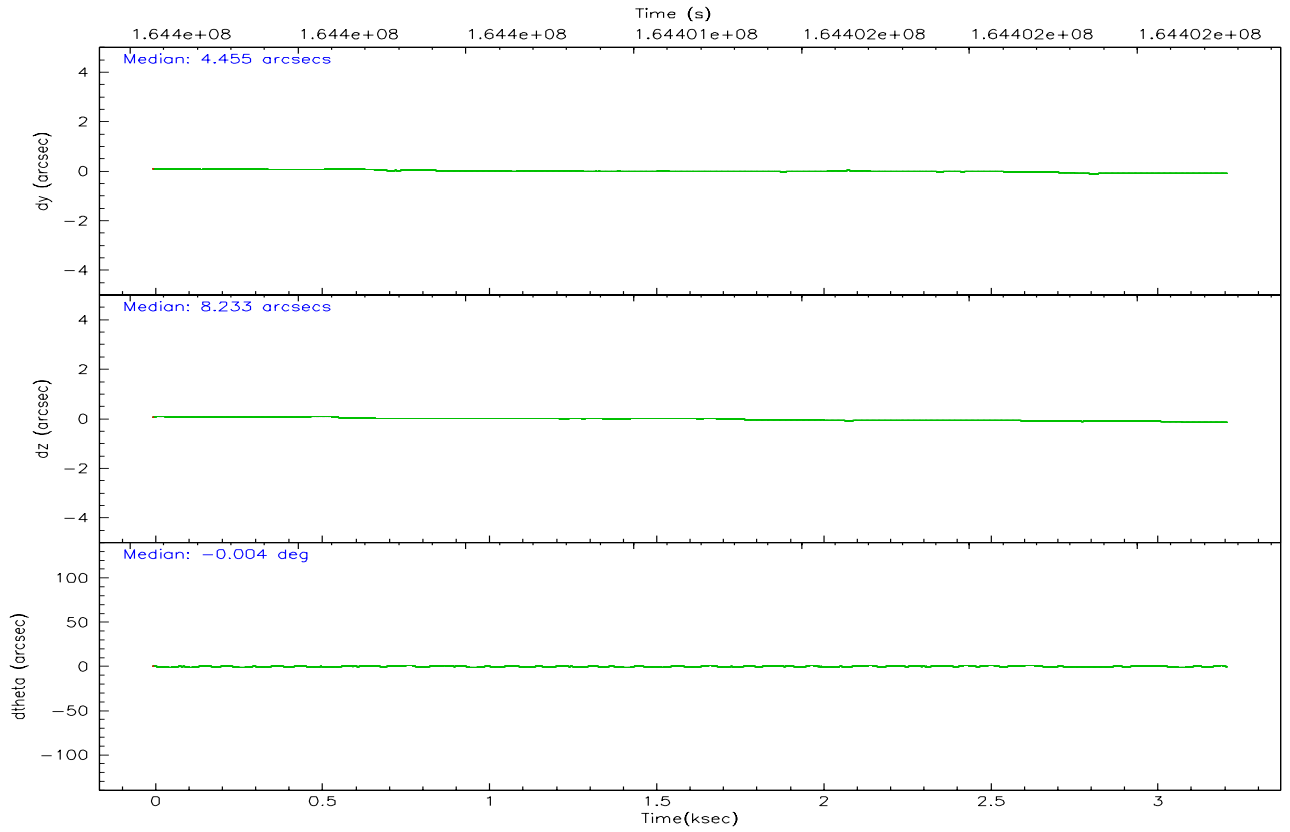
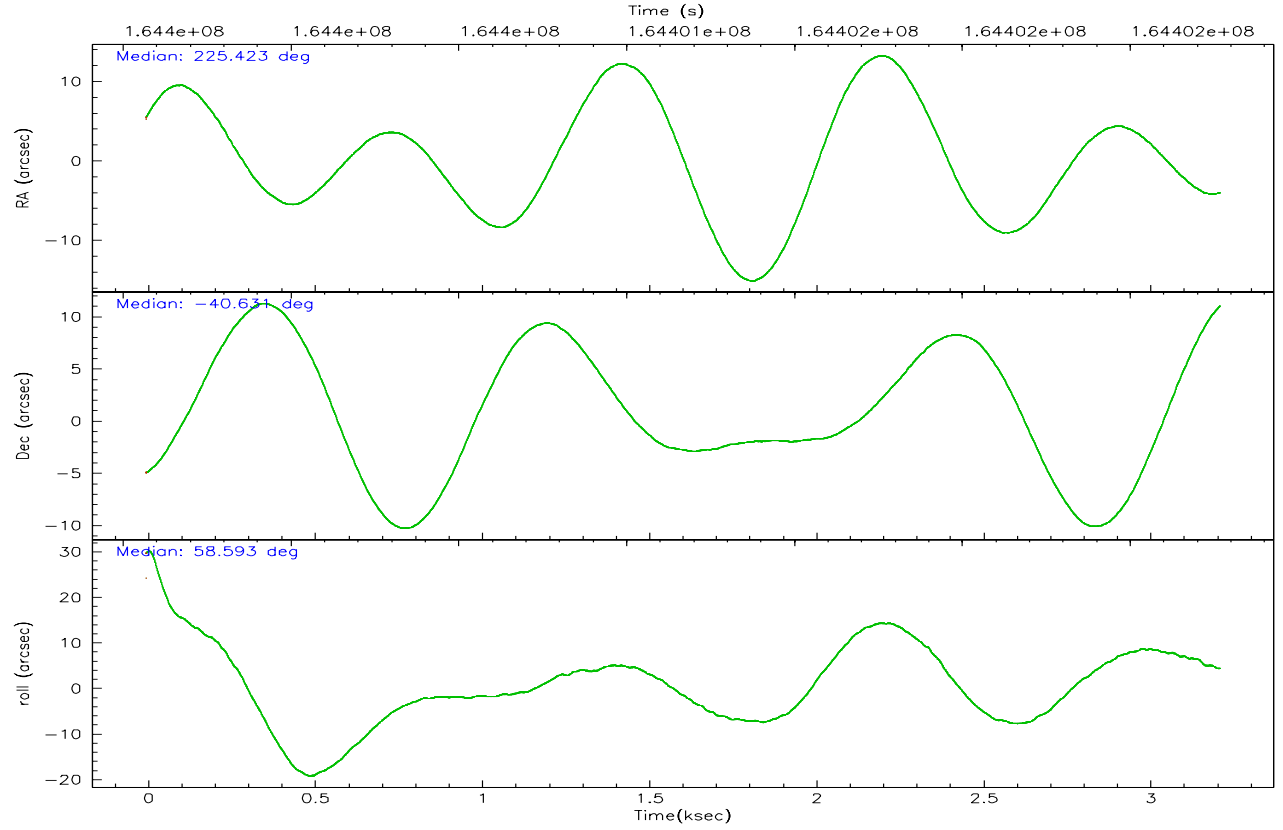
	ccd 7
grade 0 events	721
	9%
grade 1 events	1
	0%
grade 2 events	1122
	14%
grade 3 events	430
	5%
grade 4 events	448
	5%
grade 5 events	464
	5%
grade 6 events	1798
	22%
grade 7 events	2979
	37%

2.2 Compared Parameters

Parameter	Planned	Actual	Parameter	Planned	Actual
Instrument	ACIS	ACIS	Obspar format version number	6	6
Detector	ACIS-7	ACIS-7	Obspar file type	PREDICTED	ACTUAL
Grating	NONE	NONE	Obspar update status	NONE	UPDATED
Data mode	FAINT	FAINT	On-chip summing requested	N	N
Observation mode	POINTING	POINTING	Subarray requested	1/4	1/4
Pointing RA	225.423052	225.4234606108899	Subarray start row	0	385
Pointing Dec	-40.657488	-40.63022848440274	Subarray row count	1024	256
Pointing Roll	58.441915	58.59881586141569	Alternating exposures requested	N	N
SIM focus pos (mm)	-0.684267	-0.6828225247311905	Primary exposure time	0.000000	0.8
SIM defocus (mm)	0	0.001444936568705701			
SIM translation stage pos (mm)	-190.132523	-190.1400660498719			
SIM translation stage offset (mm)	0	0.00754346686406393			
Observation start time	164399747.184000	164399350.69567			
Observation start date	2003-03-18T18:34:43	2003-03-18T18:29:10			
Observation end time	164402776.184000	164403317.44583			
Observation end date	2003-03-18T19:25:12	2003-03-18T19:35:17			
Read mode	TIMED	TIMED			

2.3 Aspect



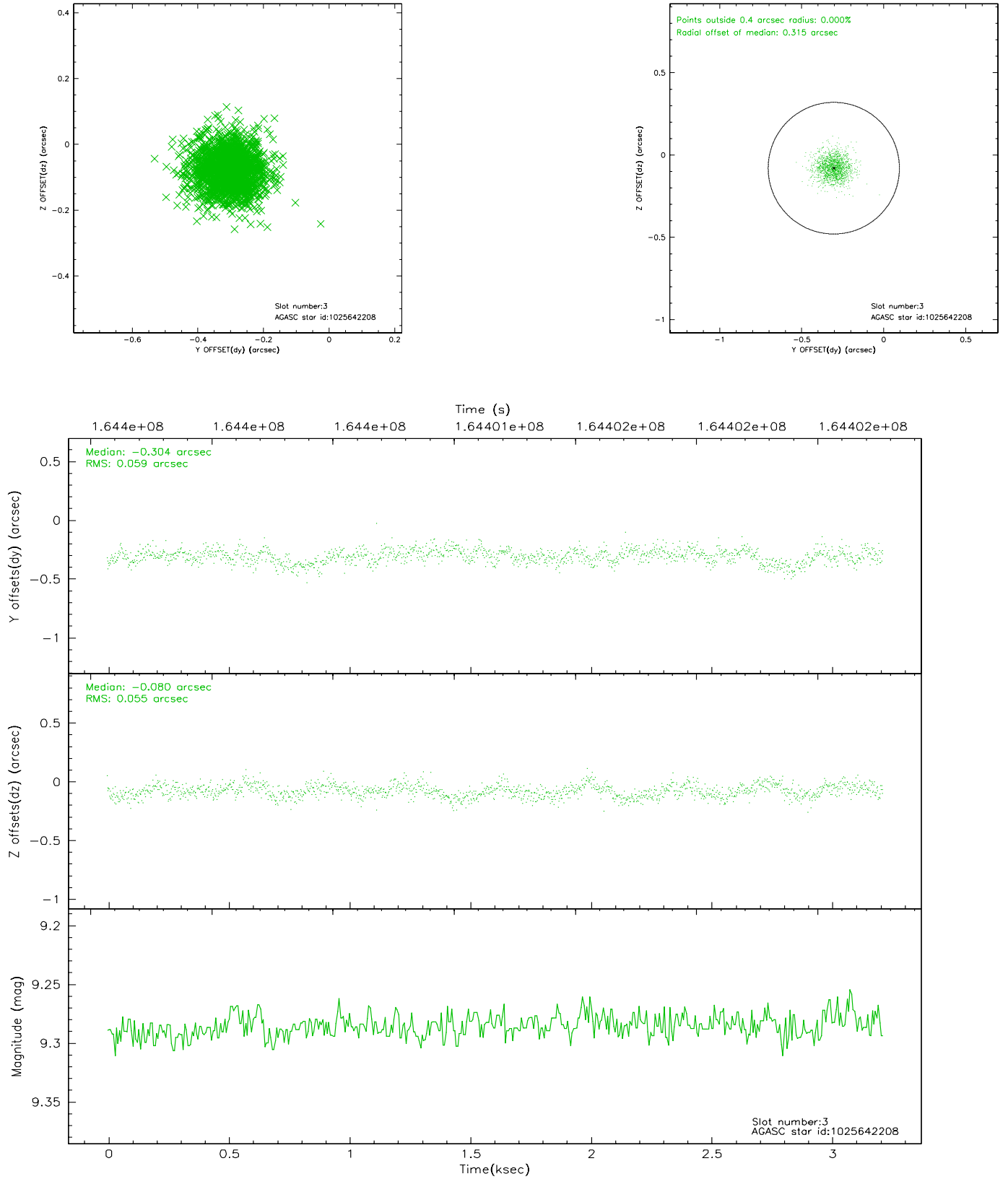


Slot Statistics

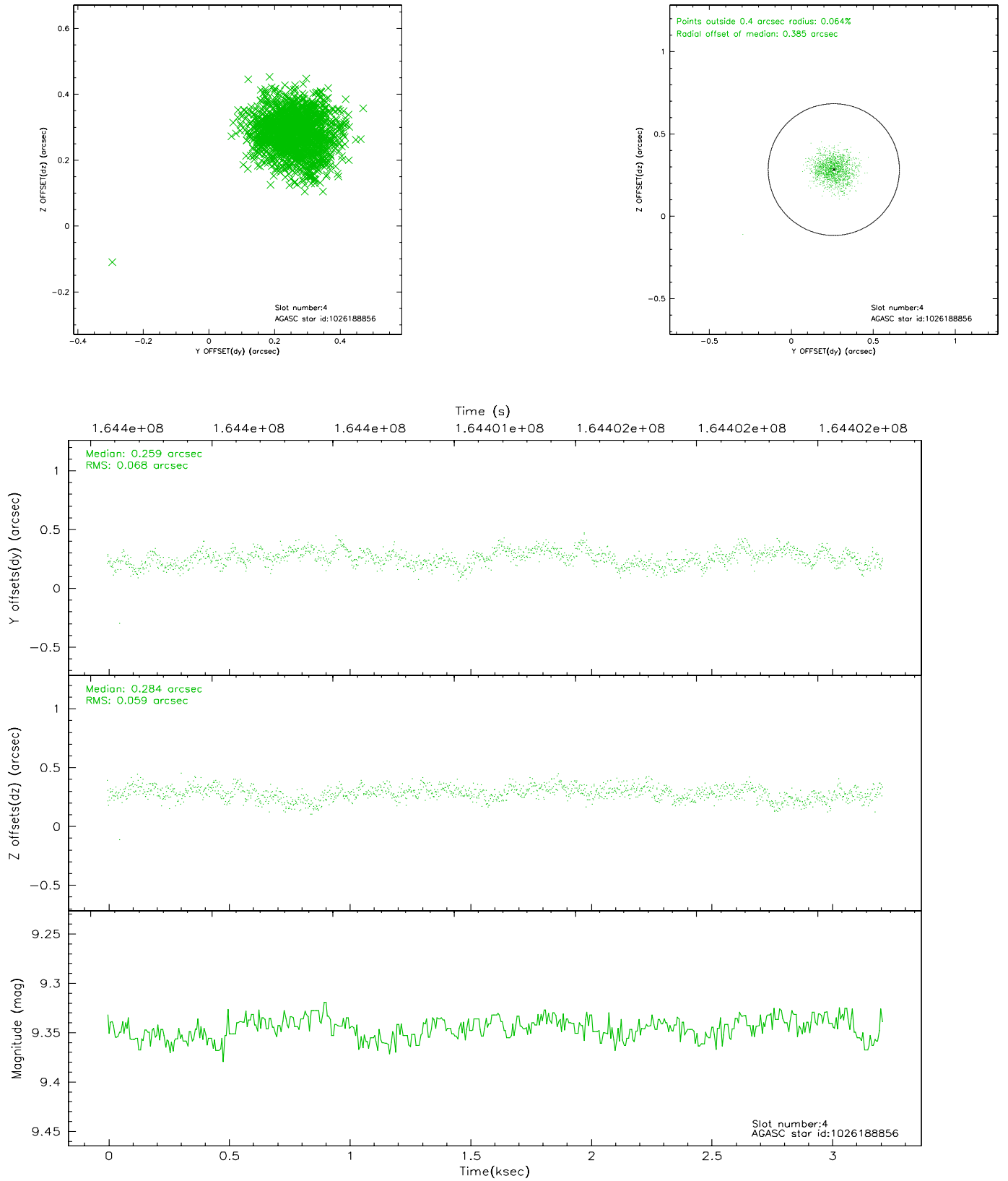
slot	status	id	mag	n_pts	med_dy	med_dz	dr1	dr2	ra	dec	mean_y	mean_z
0	FID	ACIS-S-2	7.12	785	-0.009	0.004	0.006	0.011	0.000000	0.000000	-757.16	-1729.40
1	FID	ACIS-S-4	7.21	785	-0.005	0.003	0.005	0.008	0.000000	0.000000	2155.24	177.02
2	FID	ACIS-S-5	7.24	784	-0.017	0.001	0.006	0.011	0.000000	0.000000	-1807.45	172.96
3	GUIDE	1025642208	9.29	1568	-0.304	-0.080	0.085	0.141	225.358356	-39.909165	2201.52	1562.51
4	GUIDE	1026188856	9.35	1569	0.259	0.284	0.096	0.149	225.548004	-41.307204	-1814.71	-1510.93
5	GUIDE	1025513568	9.74	1569	0.120	-0.197	0.100	0.165	224.664371	-40.711370	-1257.69	1656.84
6	GUIDE	1025525648	8.96	1569	-0.000	-0.312	0.104	0.170	224.939684	-40.040937	1189.86	2296.06
7	GUIDE	1025654048	9.70	1568	-0.056	0.305	0.103	0.167	226.246157	-40.802382	721.32	-2187.72

2.4 Star Slots

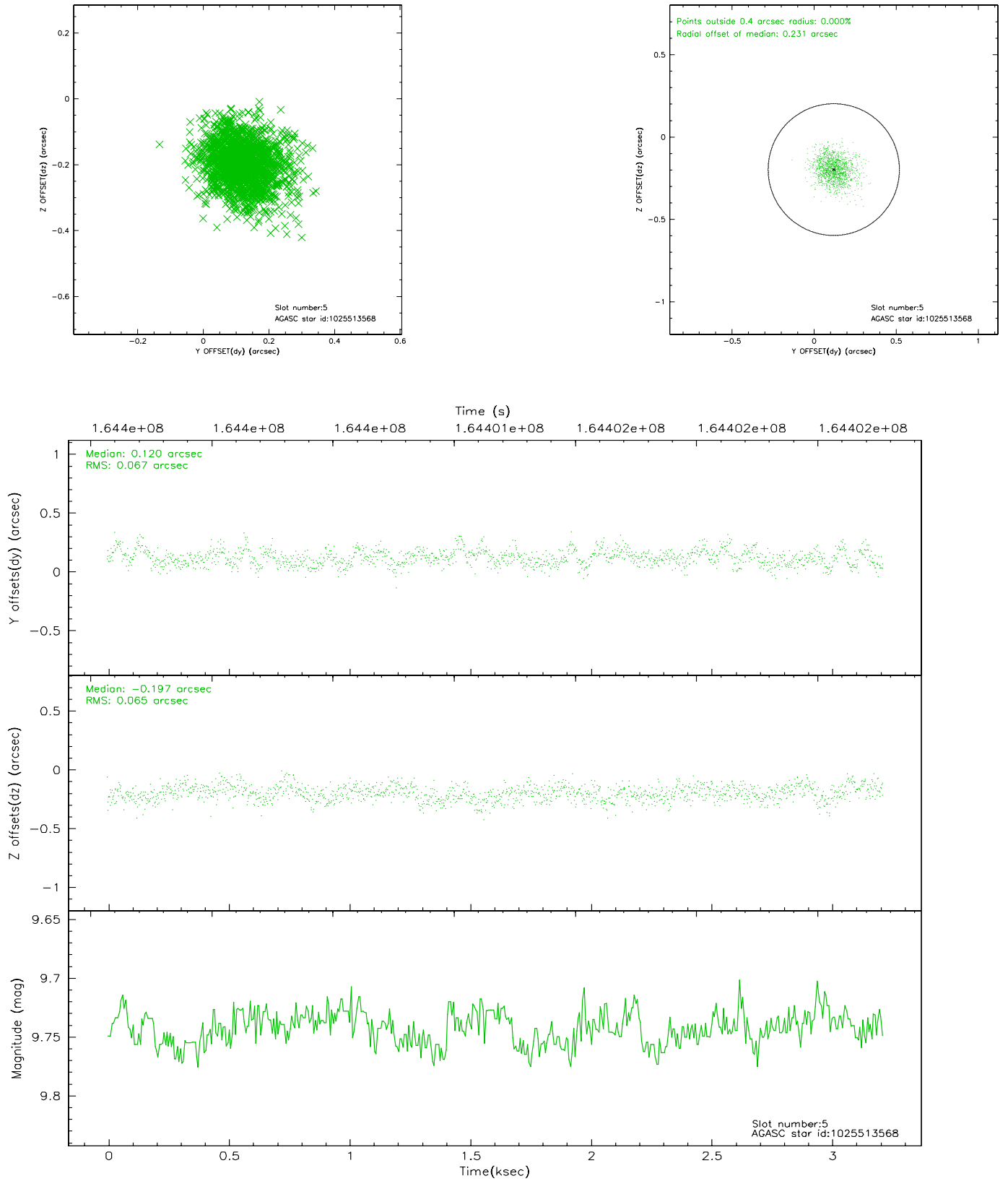
2.4.1 Slot 3



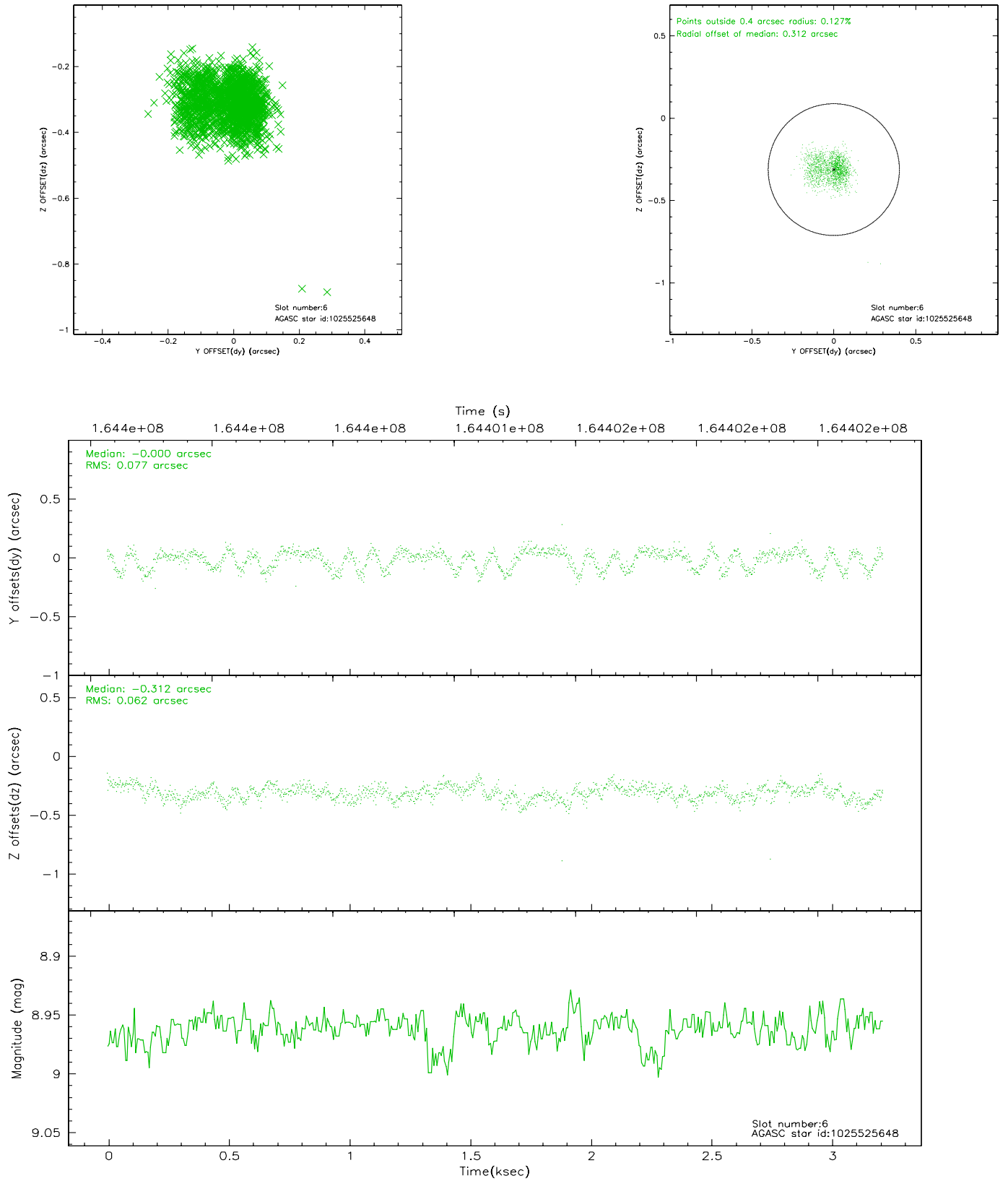
2.4.2 Slot 4



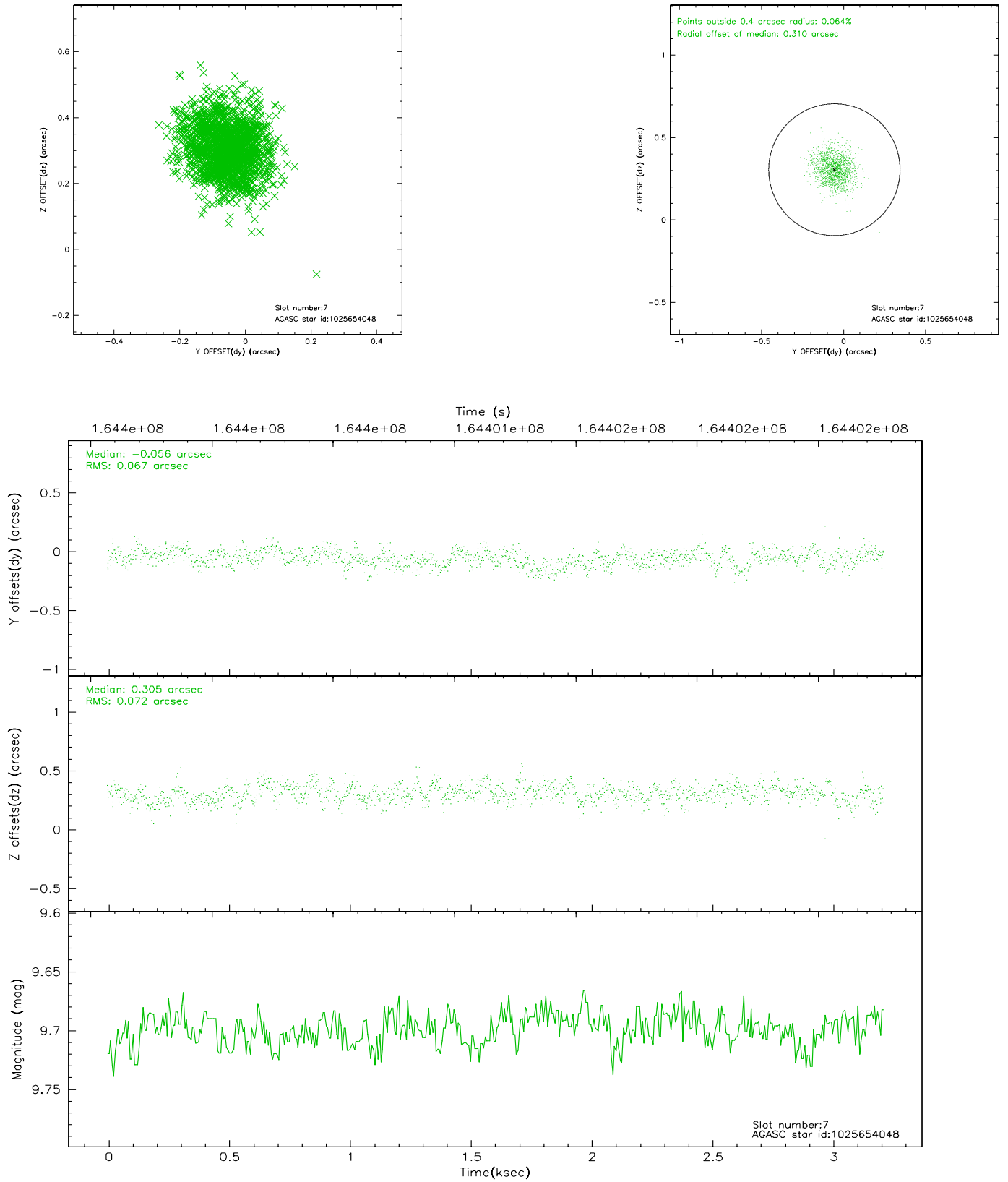
2.4.3 Slot 5



2.4.4 Slot 6

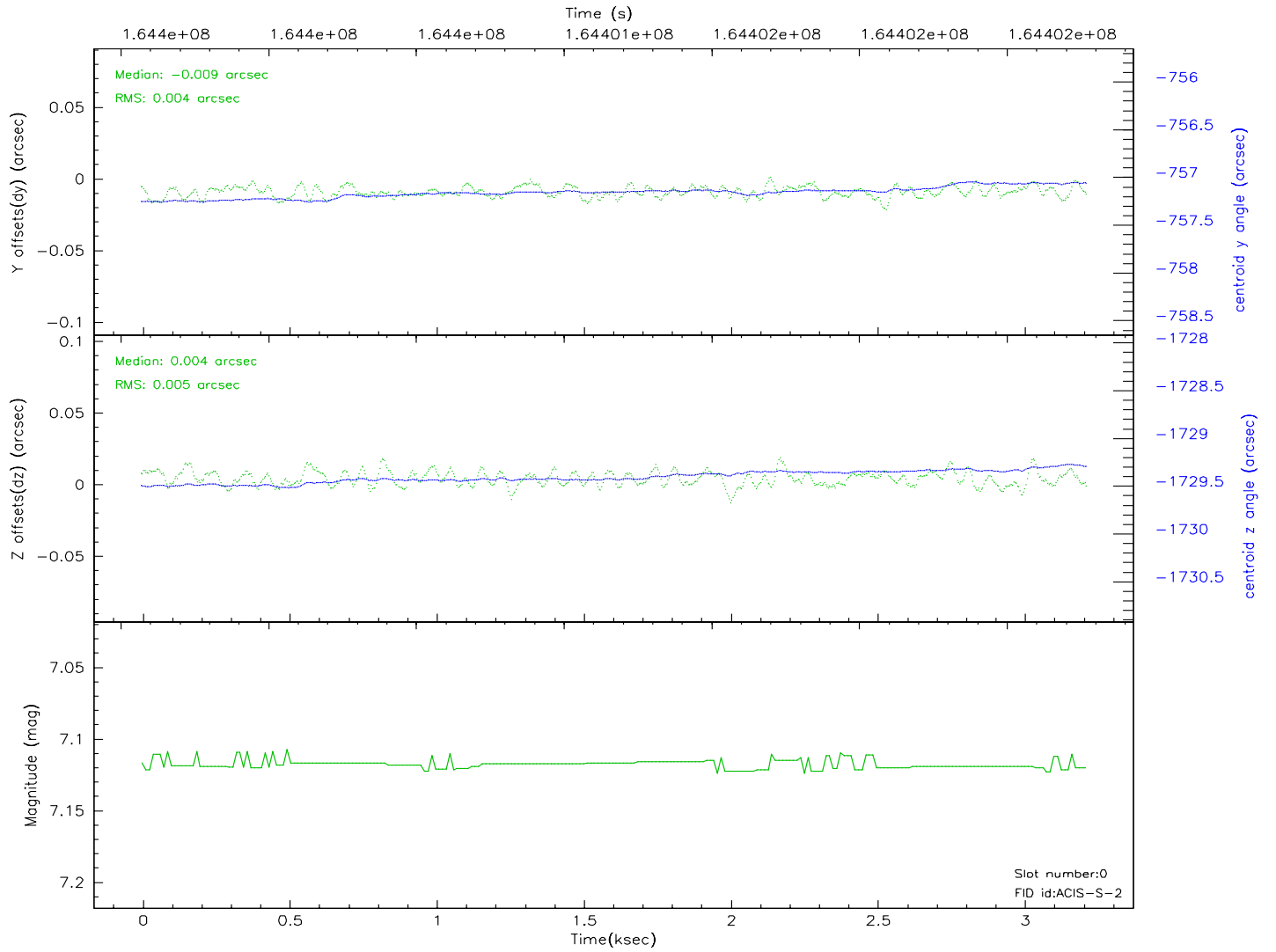
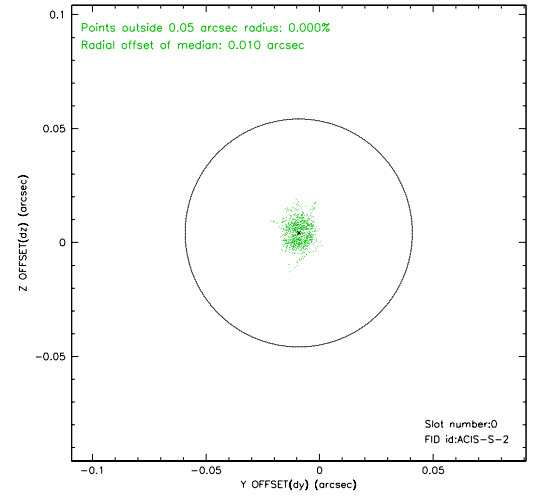
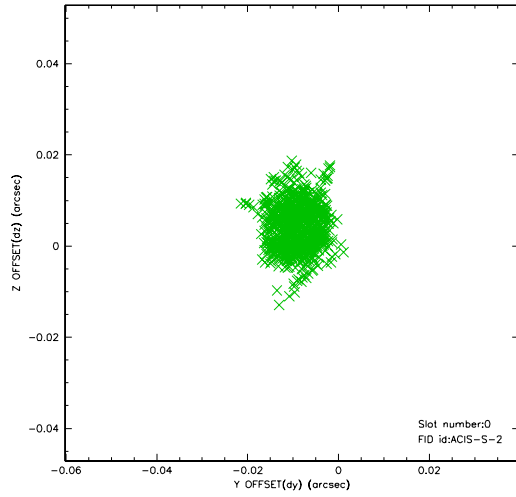


2.4.5 Slot 7

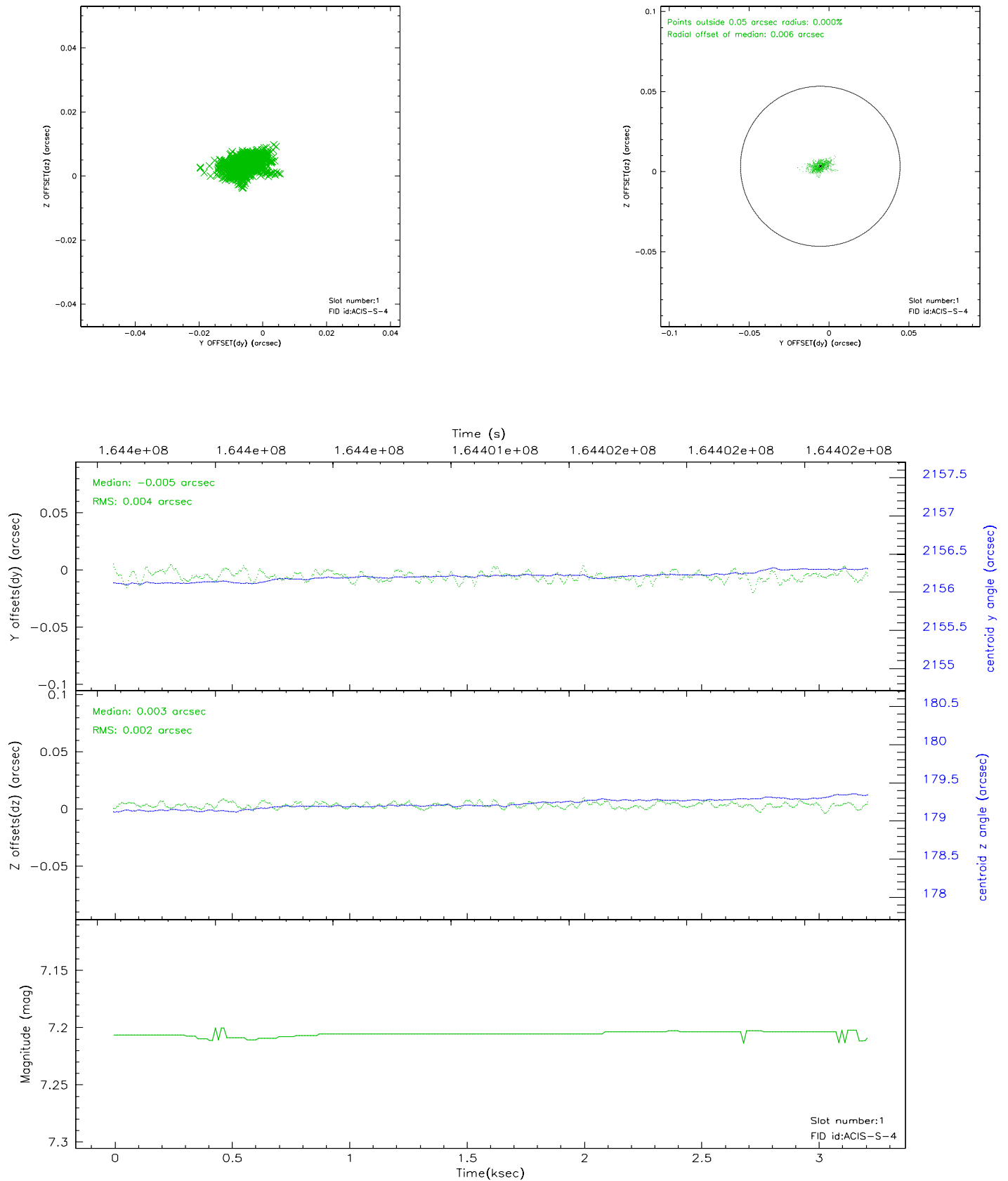


2.5 FID Slots

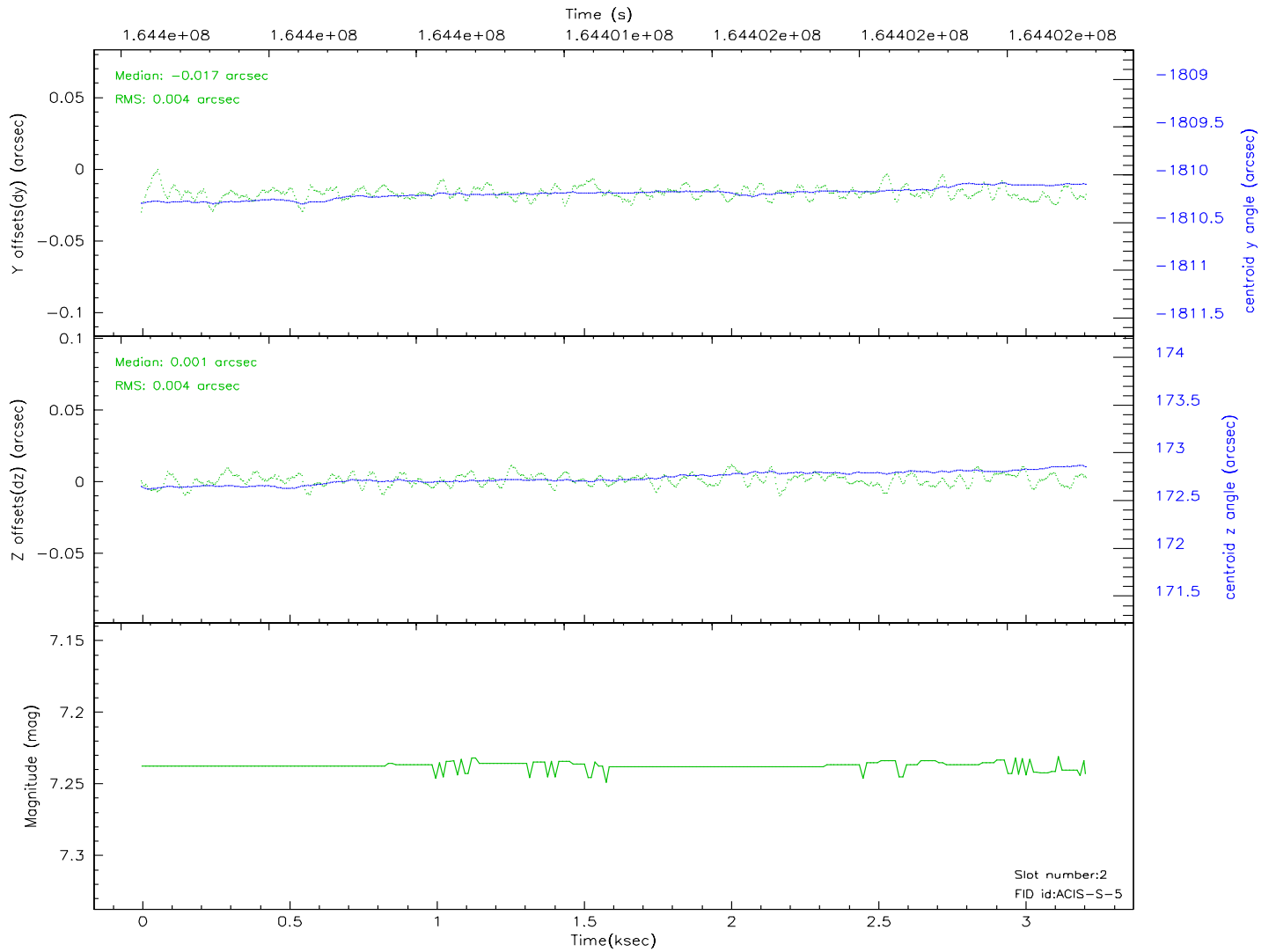
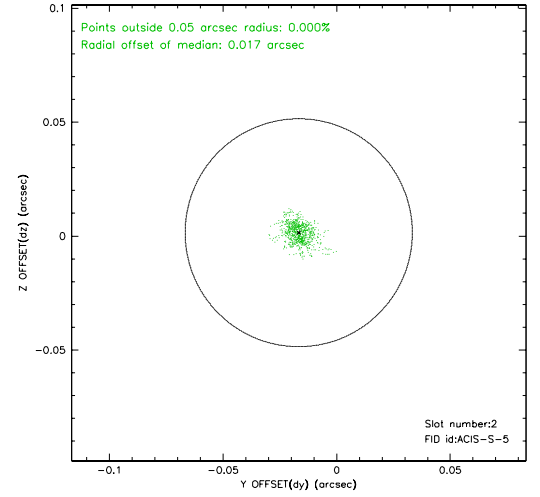
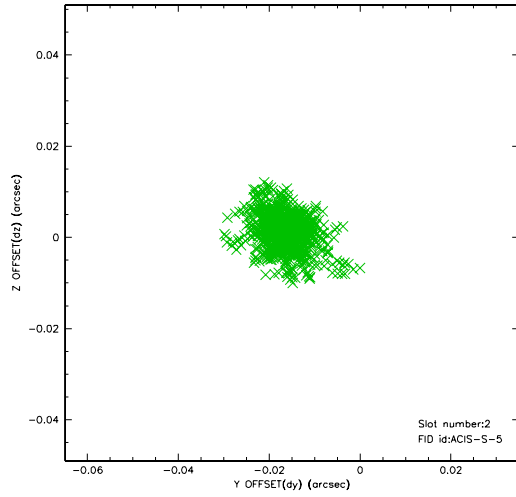
2.5.1 Slot 0



2.5.2 Slot 1



2.5.3 Slot 2



3 Point Sources

A Summary

A.1 Status

V&V Scientist	Beth Sundheim
V&V Date (YYYY-MM-DD)	2006.07.25
V&V Edition	1
V&V Disposition and Status	OK
V&V Charge Time	2.88

A.2 Comments