

V&V Reference Report

L2 ASCDS Version : 7.6.11.10

Observation 3871 - L2 Version 4
Chandra X-Ray Center

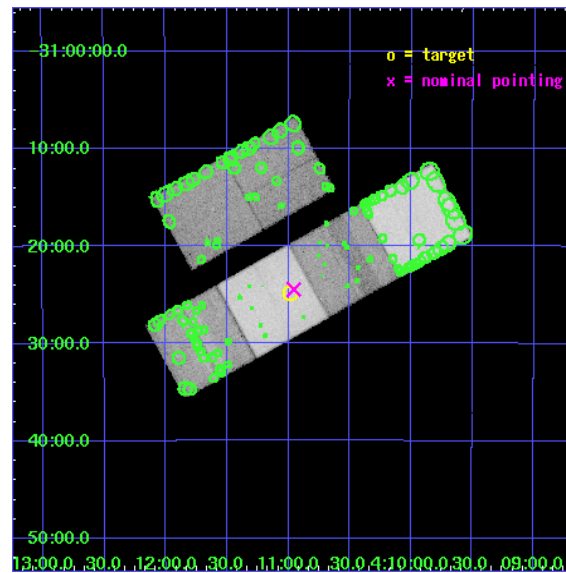
L2 Processing Date : Feb 5 2009

Contents

1	Front	2
2	OBI	3
2.1	OBI	3
2.1.1	Images	3
2.1.2	Bias	3
2.1.3	Parameters	4
2.1.4	Events	4
2.2	Compared Parameters	5
2.3	Aspect	6
2.4	Star Slots	9
2.4.1	Slot 3	9
2.4.2	Slot 4	10
2.4.3	Slot 5	11
2.4.4	Slot 6	12
2.4.5	Slot 7	13
2.5	FID Slots	14
2.5.1	Slot 0	14
2.5.2	Slot 1	15
2.5.3	Slot 2	16
3	Point Sources	17
A	Summary	18
A.1	Status	18
A.2	Comments	18

1 Front

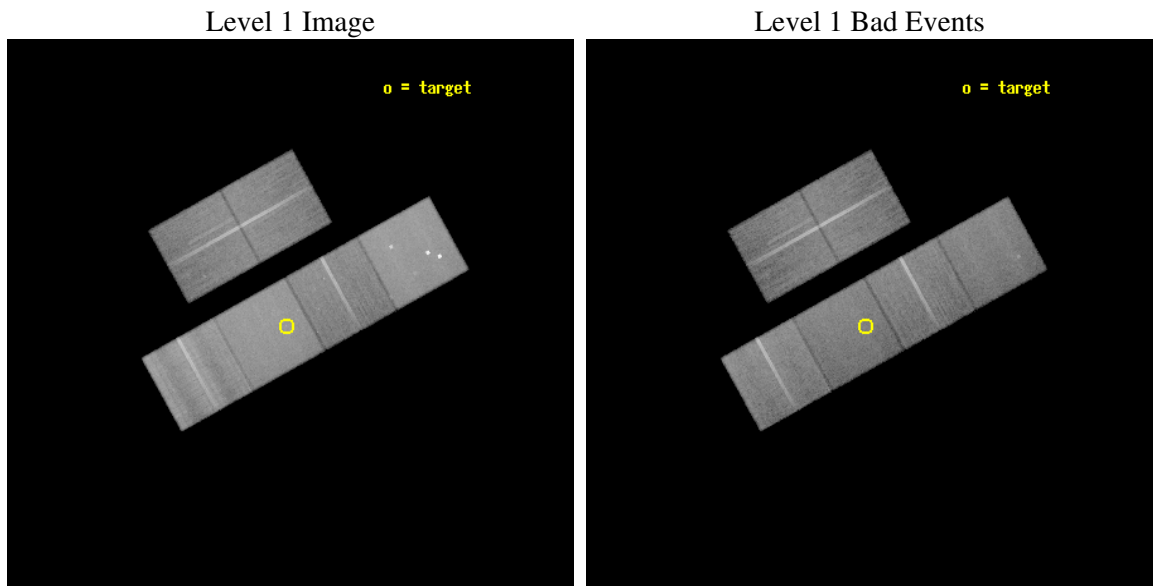
seq_num	500350
obs_id	3871
title	PROMPT CHANDRA OBSERVATIONS OF NEARBY SUPERNOVAE
observer	Prof. Walter Lewin
object	SN 2003BG
dtcycle	0
cycle	P
ra_targ	62.7475
dec_targ	-31.413972
ra_nom	62.738747008624
dec_nom	-31.40787417782
roll_nom	150.91602713452
revision	4
ontime	41187.117925972
livetime	40665.581838888
ontime2	41136.331563115
ontime3	41149.45969376
ontime5	41187.117925972
ontime6	41129.972563267
ontime7	41187.117925972
ontime8	41159.223664403
l2events	560841



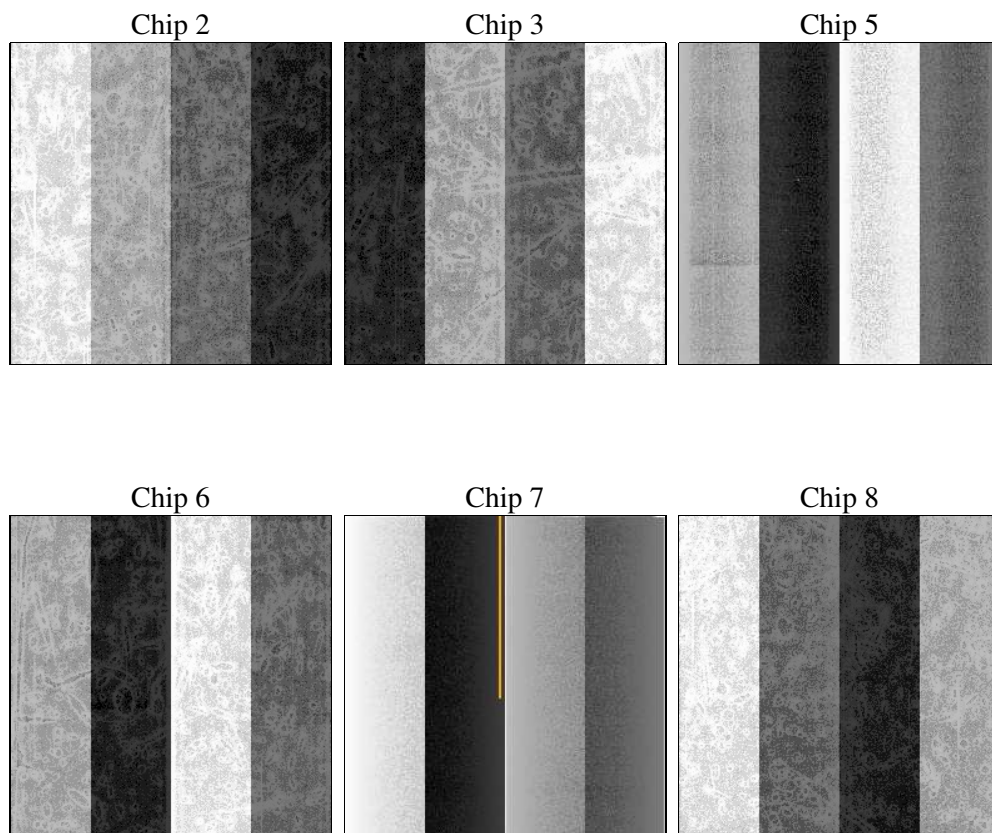
2 OBI

2.1 OBI

2.1.1 Images



2.1.2 Bias



2.1.3 Parameters

obi_num	1
ascdsver	7.6.11.10
caldsver	3.5.1
date	2009-02-05T04:38:40
revision	4

sched_exp_time	48862.115000
ontime	41187.117925972
ontime2	41136.331563115
ontime3	41149.45969376
ontime5	41187.117925972
ontime6	41129.972563267
ontime7	41187.117925972
ontime8	41159.223664403
l1events	1932133

2.1.4 Events

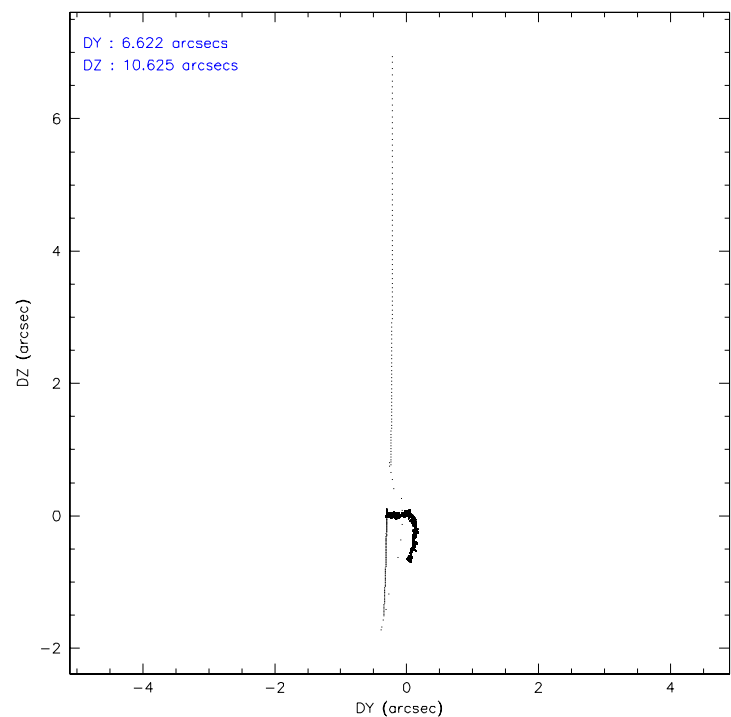
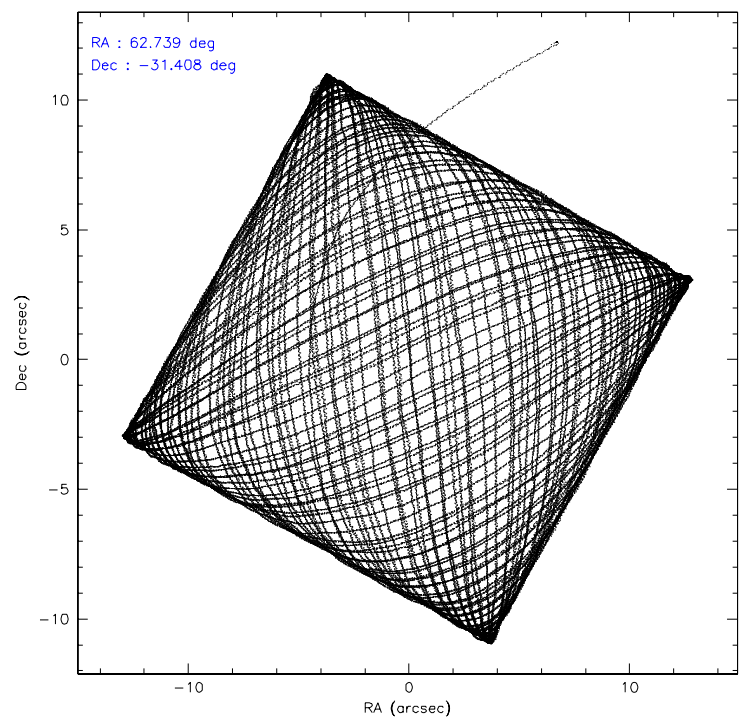
	ccd 2	ccd 3	ccd 5	ccd 6	ccd 7	ccd 8
level 1 events	262782	249169	410614	266483	368757	374328
rejected events	214044	202835	197626	213541	188847	243260
rejected %	81%	81%	48%	80%	51%	64%

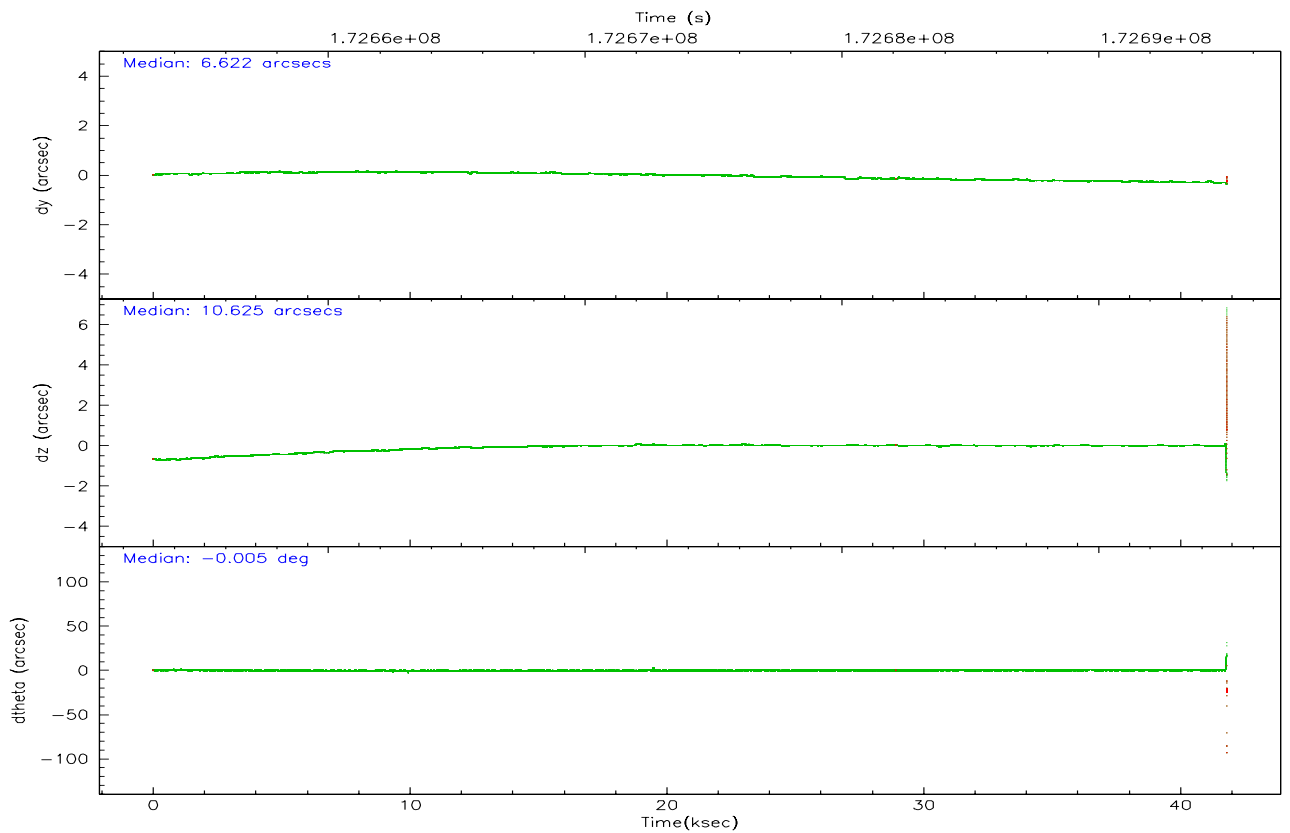
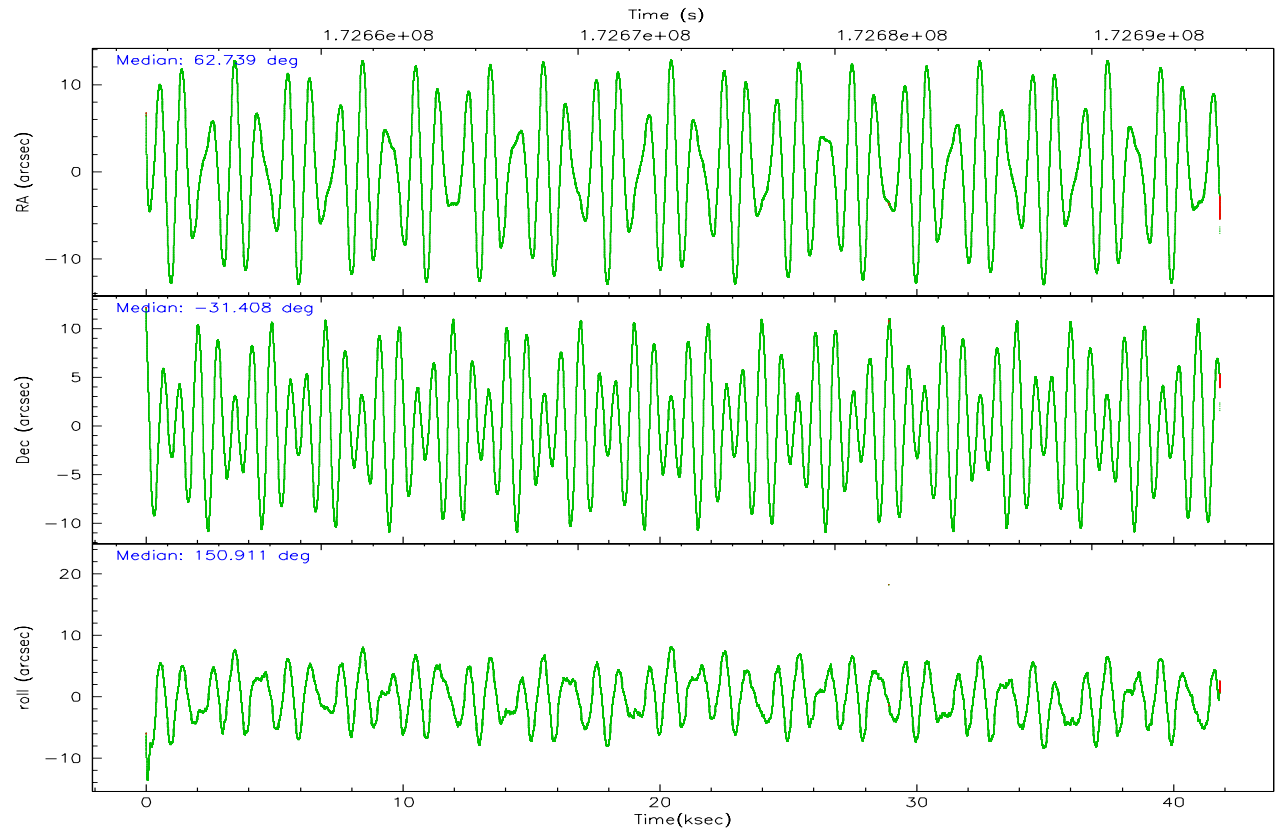
	ccd 2	ccd 3	ccd 5	ccd 6	ccd 7	ccd 8
grade 0 events	26473	24528	30865	27837	17199	53432
	10%	9%	7%	10%	4%	14%
grade 1 events	244	195	866	197	301	377
	0%	0%	0%	0%	0%	0%
grade 2 events	8922	8659	61494	11052	33580	21559
	3%	3%	14%	4%	9%	5%
grade 3 events	3133	3230	9441	3301	15071	16634
	1%	1%	2%	1%	4%	4%
grade 4 events	3467	3228	9253	3258	14951	15435
	1%	1%	2%	1%	4%	4%
grade 5 events	9208	10143	26909	10907	30995	14451
	3%	4%	6%	4%	8%	3%
grade 6 events	6757	6689	102718	7500	99880	24019
	2%	2%	25%	2%	27%	6%
grade 7 events	204578	192497	169068	202431	156780	228421
	77%	77%	41%	75%	42%	61%

2.2 Compared Parameters

Parameter	Planned	Actual	Parameter	Planned	Actual
Instrument	ACIS	ACIS	Obspar format version number	6	6
Detector	ACIS-235678	ACIS-235678	Obspar file type	PREDICTED	ACTUAL
Grating	NONE	NONE	Obspar update status	OVERRIDE	OVERRIDE
Data mode	FAINT	FAINT	Number of optional ACIS chips dropped	0	0
Observation mode	POINTING	POINTING	On-chip summing requested	N	N
Pointing RA	62.73874700862362	62.73874700862362	Subarray requested	NONE	NONE
Pointing Dec	-31.40787417781953	-31.40787417781953	Alternating exposures requested	N	N
Pointing Roll	150.9160271345199	150.9160271345199	Primary exposure time	3.2	3.2
SIM focus pos (mm)	-0.68282252473119	-0.68282252473119			
SIM defocus (mm)	0.001444942264670734	0.001444942264670734			
SIM translation stage pos (mm)	-190.1425803652	-190.1425803652			
SIM translation stage offset (mm)	0.01005726123278805	0.01005726123278805			
Observation start time	172652531.63216	172652531.63216			
Observation start date	2003-06-22T07:19:30	2003-06-22T07:02:11			
Observation end time	172694986.62141	172694986.62141			
Observation end date	2003-06-22T20:53:52	2003-06-22T18:49:46			
Read mode	TIMED	TIMED			

2.3 Aspect



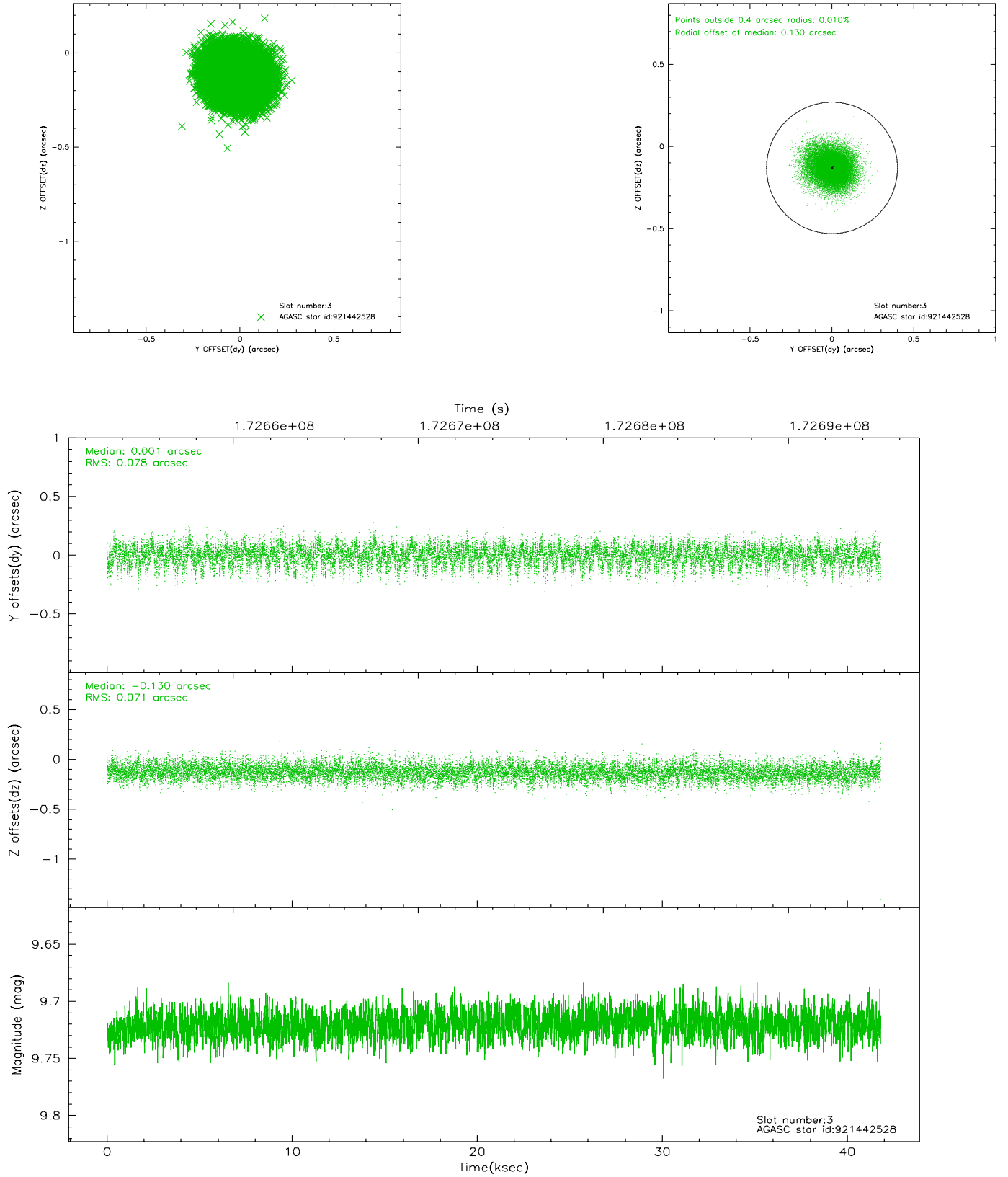


Slot Statistics

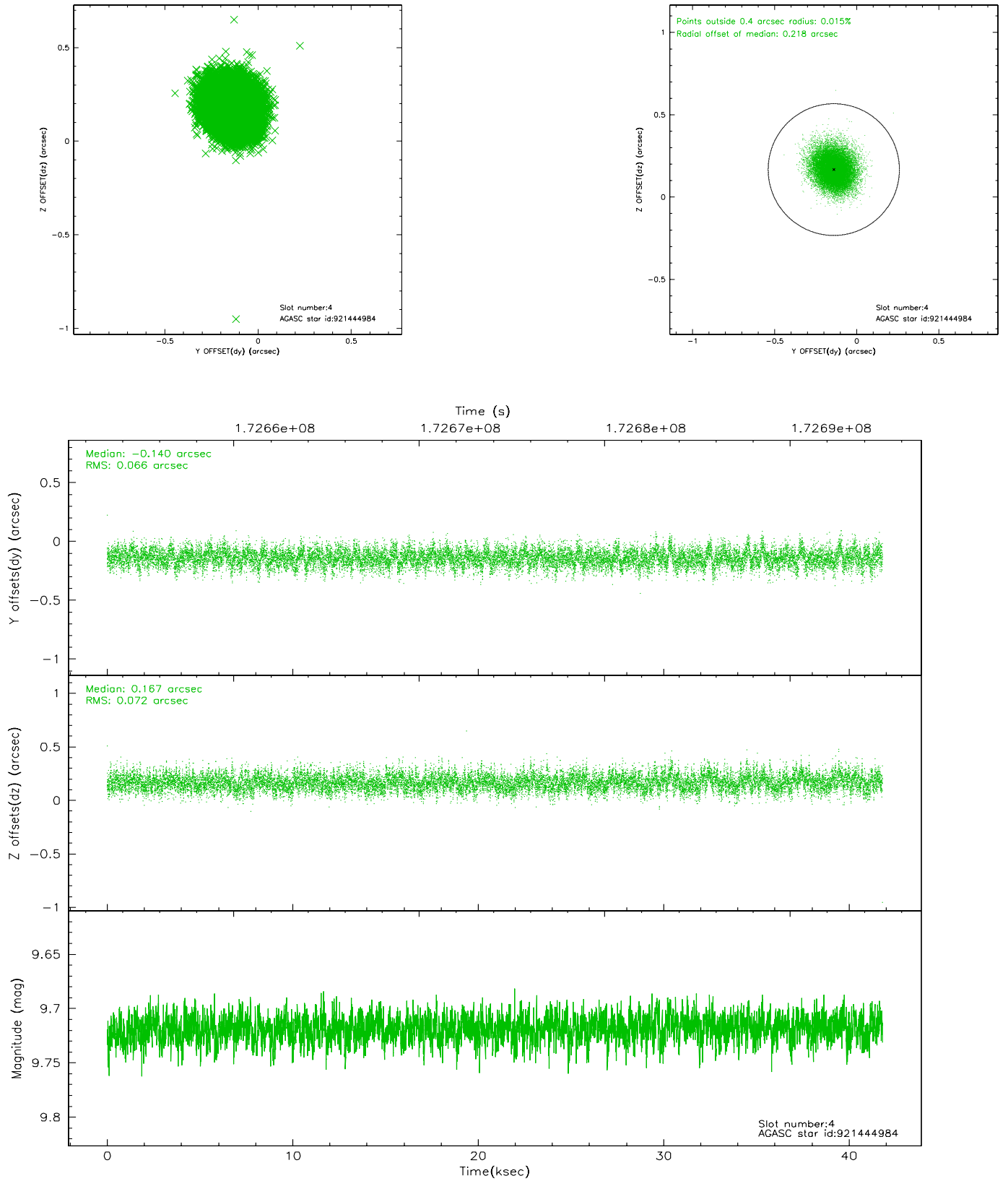
slot	status	id	mag	n_pts	med_dy	med_dz	dr1	dr2	ra	dec	mean_y	mean_z
0	FID	ACIS-S-2	7.10	10189	-0.055	-0.010	0.008	0.013	0.000000	0.000000	-759.34	-1731.76
1	FID	ACIS-S-4	7.20	10190	0.056	0.029	0.006	0.012	0.000000	0.000000	2154.00	176.81
2	FID	ACIS-S-5	7.23	10190	-0.032	-0.011	0.008	0.014	0.000000	0.000000	-1812.19	170.38
3	GUIDE	921442528	9.72	20381	0.001	-0.130	0.113	0.181	62.194584	-31.879140	704.82	2347.10
4	GUIDE	921444984	9.72	20382	-0.140	0.167	0.103	0.168	62.566305	-30.821839	1579.84	-1529.14
5	GUIDE	921446000	9.96	20381	0.058	-0.036	0.128	0.206	62.235422	-31.341380	1549.88	600.79
6	GUIDE	922363888	8.72	20386	0.104	0.142	0.081	0.131	63.308834	-31.283379	-1229.21	-1193.25
7	GUIDE	922365648	7.49	20389	-0.019	-0.139	0.060	0.098	63.098764	-31.581103	-1185.46	56.70

2.4 Star Slots

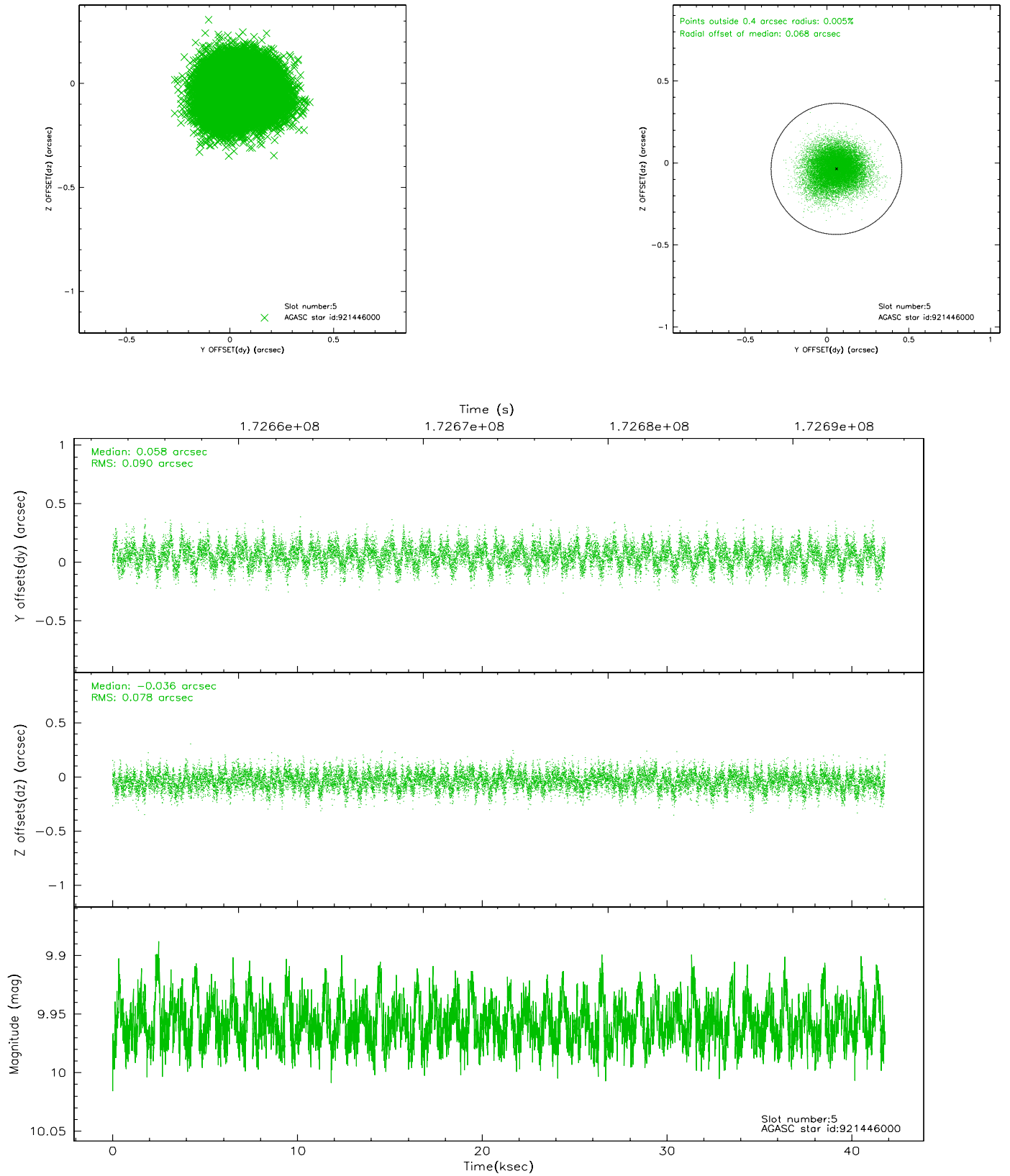
2.4.1 Slot 3



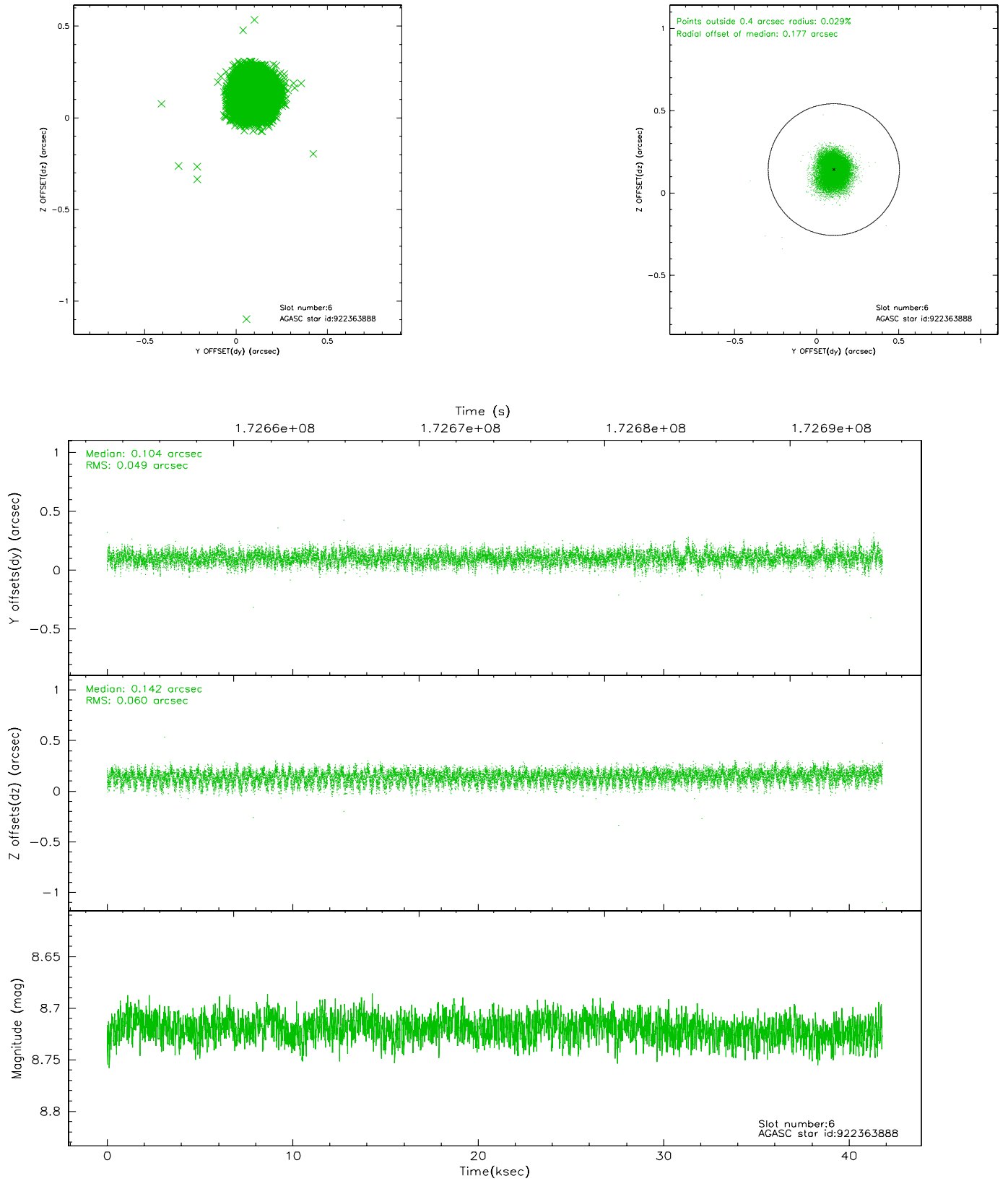
2.4.2 Slot 4



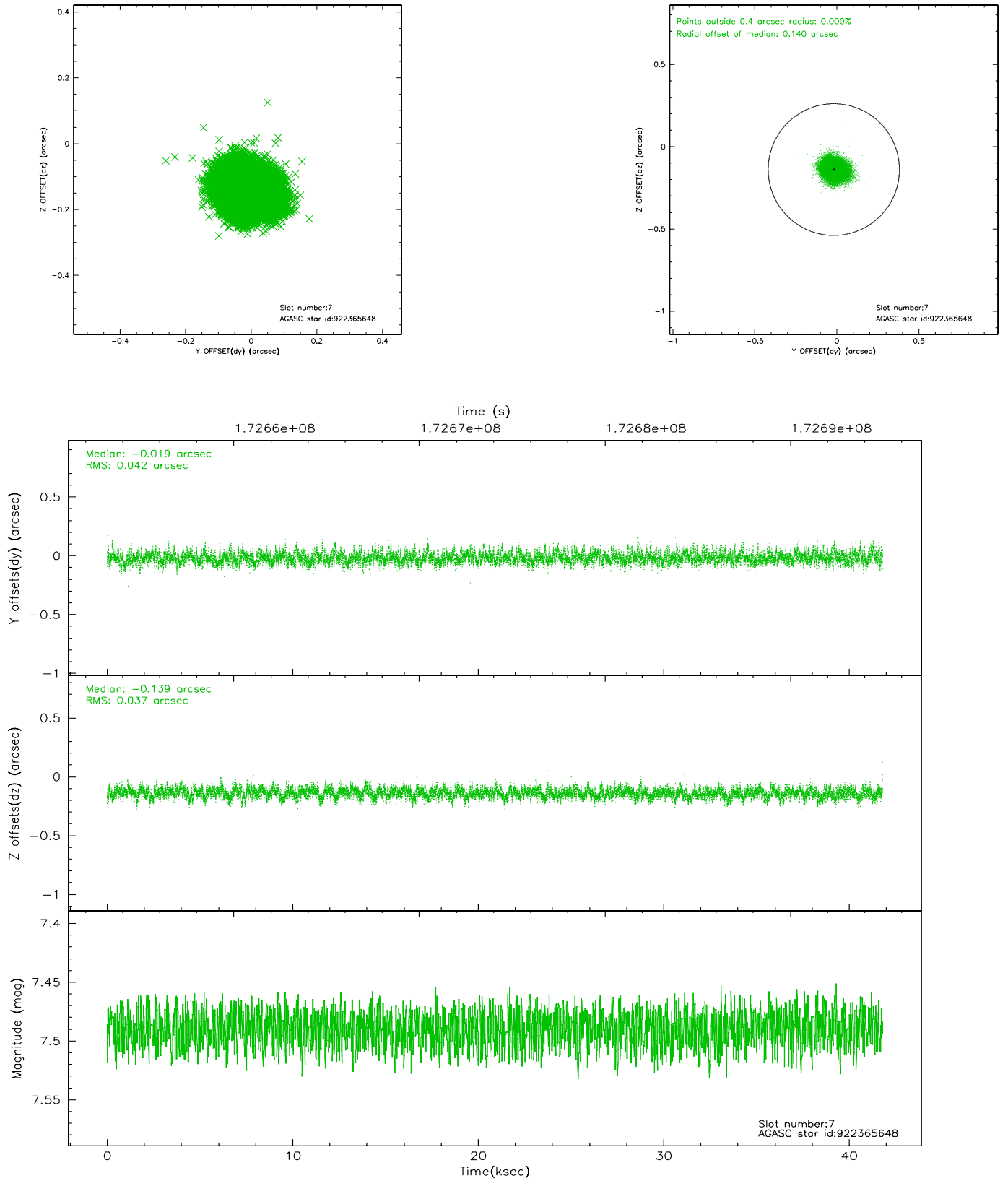
2.4.3 Slot 5



2.4.4 Slot 6

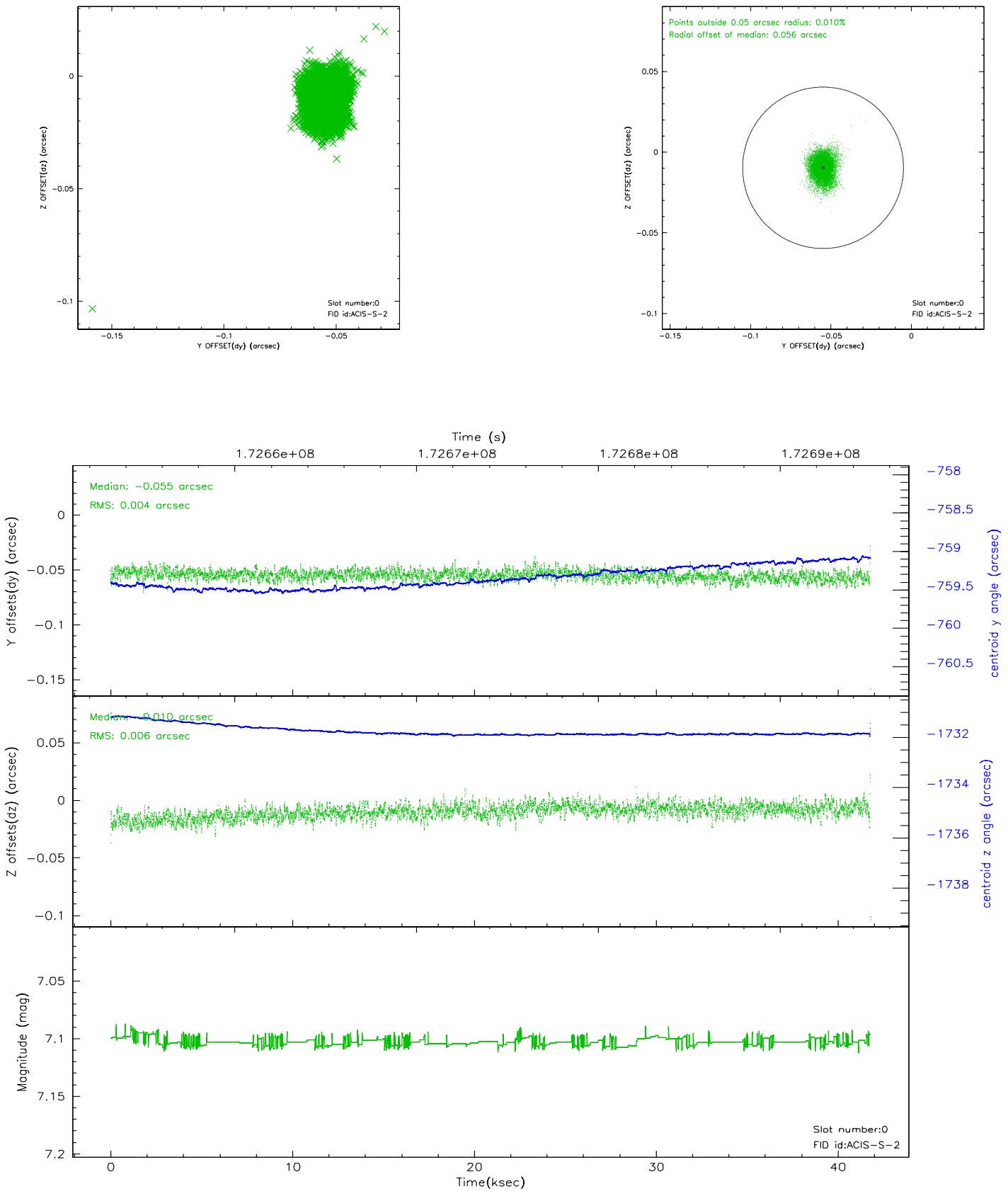


2.4.5 Slot 7

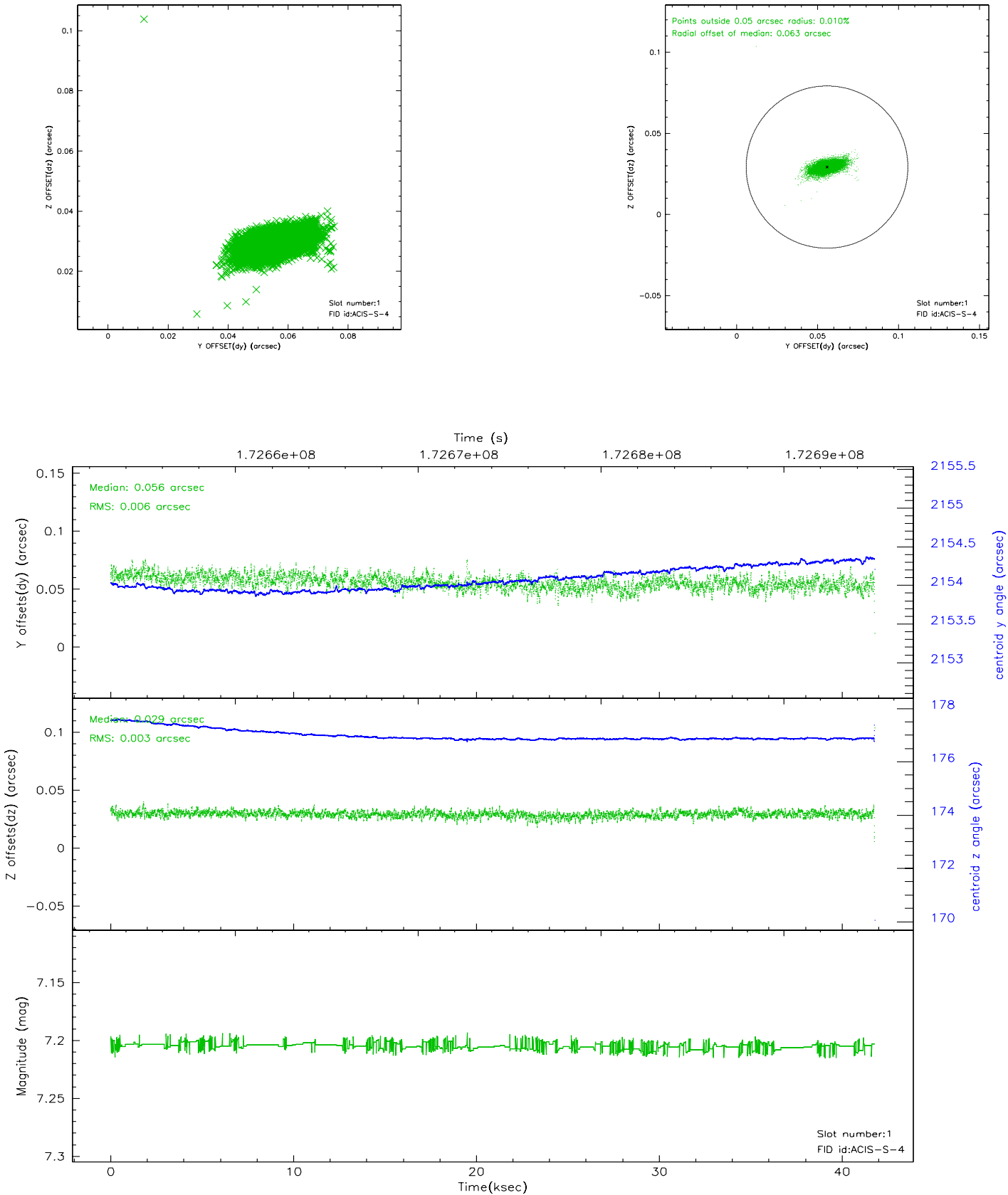


2.5 FID Slots

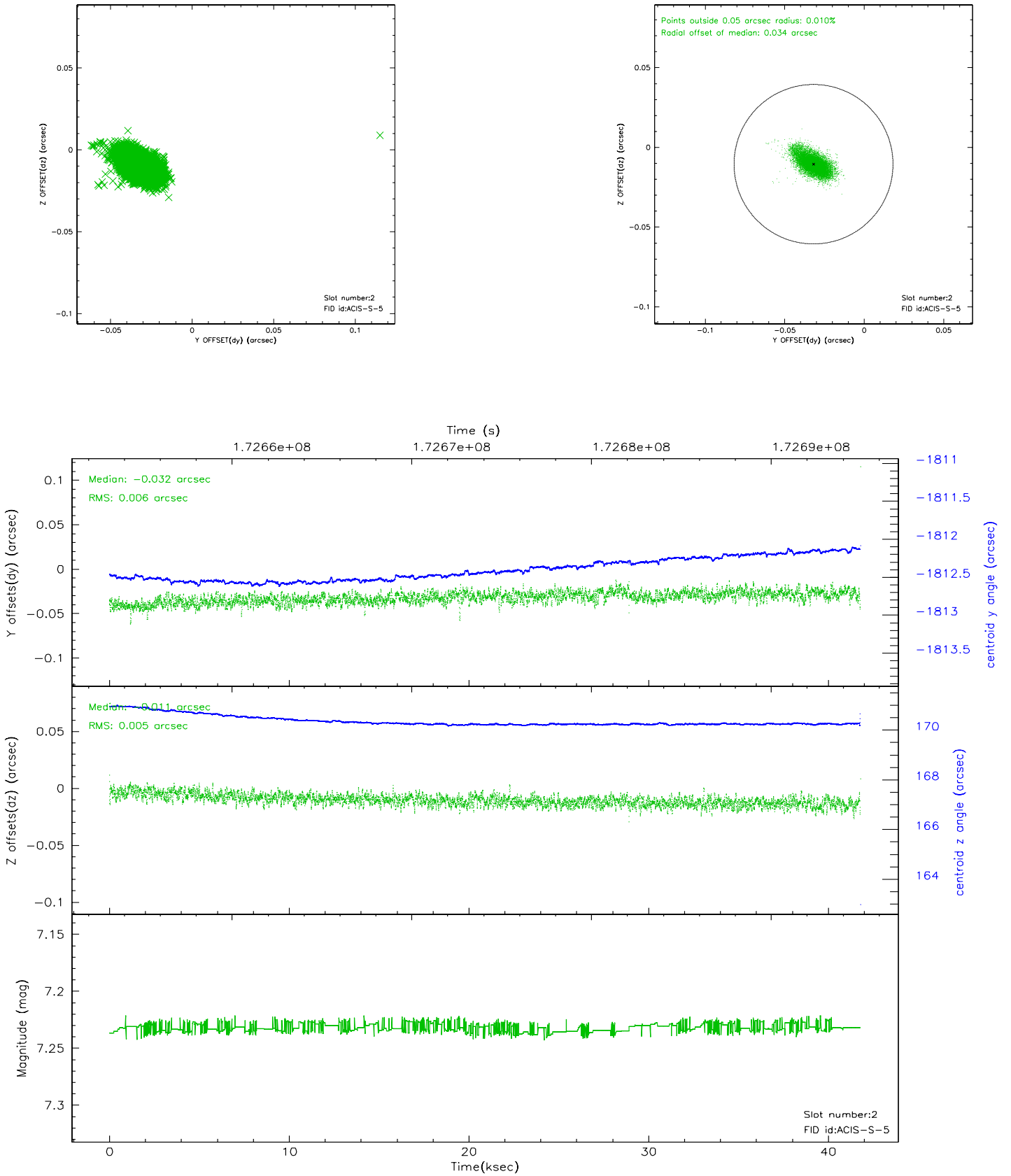
2.5.1 Slot 0



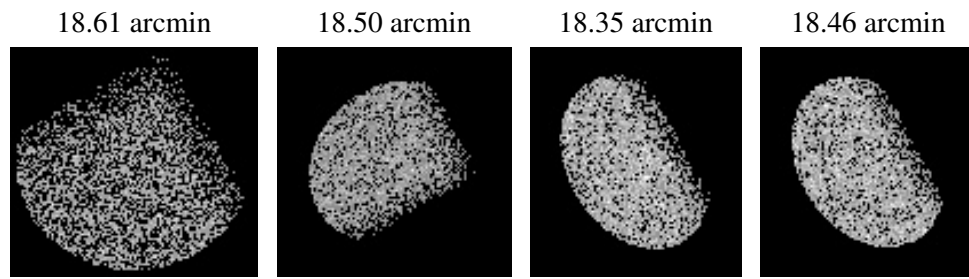
2.5.2 Slot 1



2.5.3 Slot 2



3 Point Sources



A Summary

A.1 Status

V&V Scientist	Beth Sundheim
V&V Date (YYYY-MM-DD)	2009.02.05
V&V Edition	1
V&V Disposition and Status	OK
V&V Charge Time	41.19

A.2 Comments

This obsid was reprocessed to correct minor errors in parameters used in processing. Some of these parameters cannot be determined automatically for this observation and were derived from spacecraft telemetry.