

V&V Reference Report

L2 ASCDS Version : 7.6.8

Observation 3861 - L2 Version 001
Chandra X-Ray Center

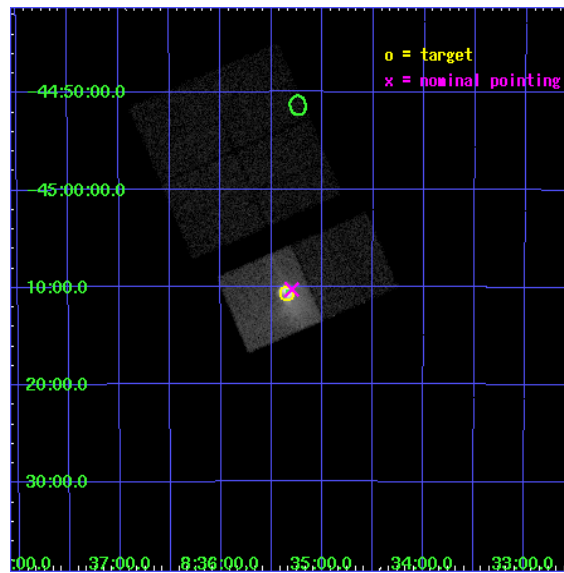
L2 Processing Date : Jul 7 2006

Contents

1	Front	2
2	OBI	3
2.1	OBI	3
2.1.1	Images	3
2.1.2	Bias	3
2.1.3	Parameters	4
2.1.4	Events	4
2.2	Compared Parameters	5
2.3	Aspect	6
2.4	Star Slots	9
2.4.1	Slot 3	9
2.4.2	Slot 4	10
2.4.3	Slot 5	11
2.4.4	Slot 6	12
2.4.5	Slot 7	13
2.5	FID Slots	14
2.5.1	Slot 0	14
2.5.2	Slot 1	15
2.5.3	Slot 2	16
3	Point Sources	17
A	Summary	18
A.1	Status	18
A.2	Comments	18

1 Front

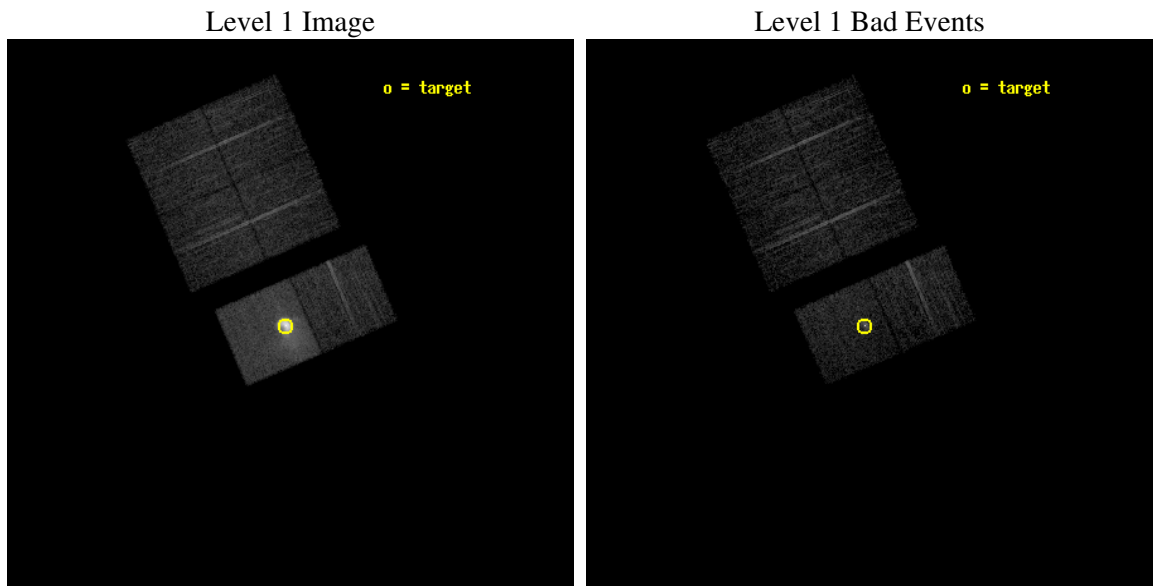
seq_num	500340
obs_id	3861
title	PHASE RESOLVED SPECTROSCOPY OF THE VELA PULSAR
observer	Dr. George Pavlov
object	VELA PULSAR
dtcycle	0
cycle	P
ra_targ	128.83625
dec_targ	-45.176583
ra_nom	128.82477167915
dec_nom	-45.171252185776
roll_nom	156.64848148836
revision	2
ontime	4959.9590411484
livetime	4897.1530532406
ontime0	4963.1999815106
ontime1	4959.9590212107
ontime2	4963.1999815106
ontime3	4963.1999815106
ontime6	4963.1999815106
ontime7	4959.9590411484
l2events	121886



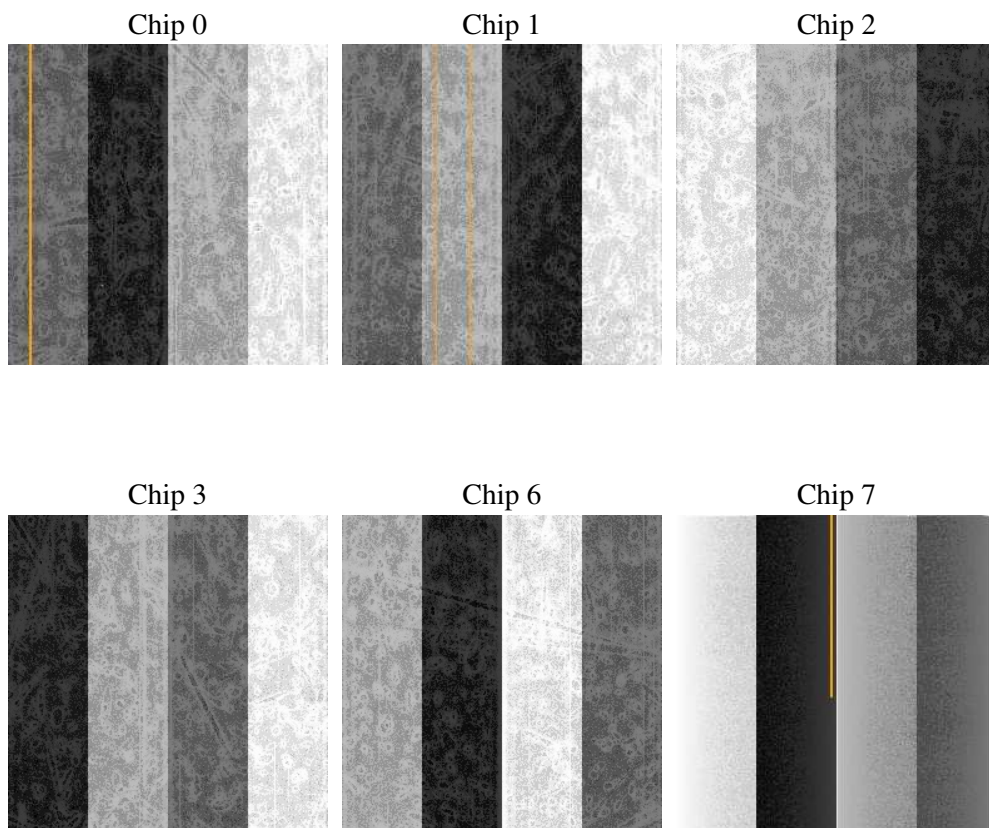
2 OBI

2.1 OBI

2.1.1 Images



2.1.2 Bias



2.1.3 Parameters

obi_num	0
ascdsver	7.6.8
caldsver	3.2.2
date	2006-07-07T12:43:45
revision	2

sched_exp_time	5000.000000
ontime	4965.2119123042
ontime0	4968.4528227746
ontime1	4965.2118624747
ontime2	4968.4528227746
ontime3	4968.4528227746
ontime6	4968.4528227746
ontime7	4965.2119123042
l1events	287939

2.1.4 Events

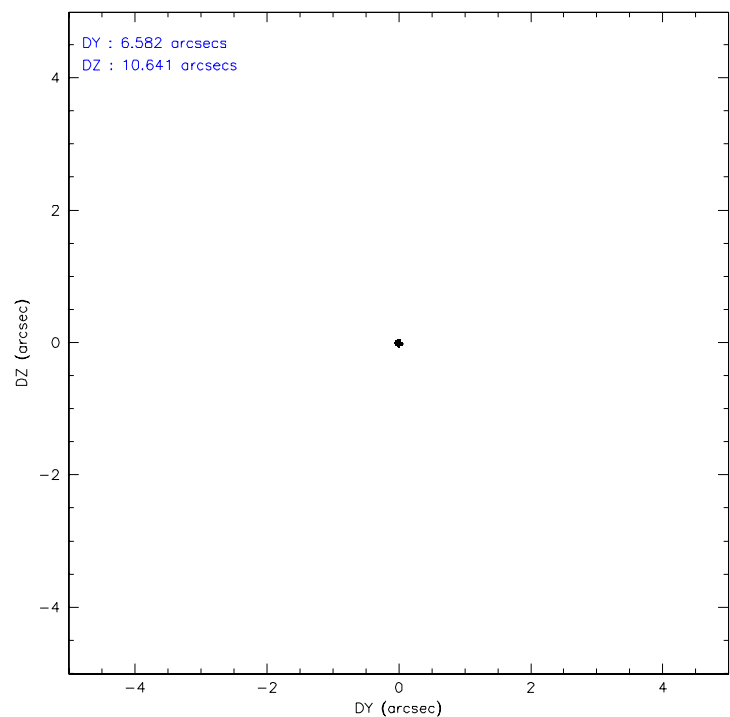
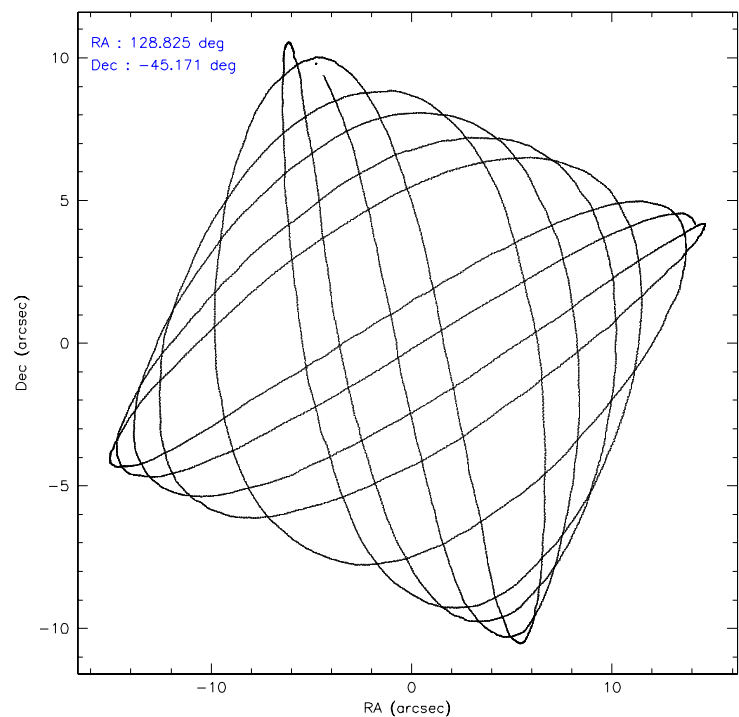
	ccd 0	ccd 1	ccd 2	ccd 3	ccd 6	ccd 7
level 1 events	32055	31548	33073	33733	37849	119681
rejected events	26044	24846	26437	26664	28536	28395
rejected %	81%	78%	79%	79%	75%	23%

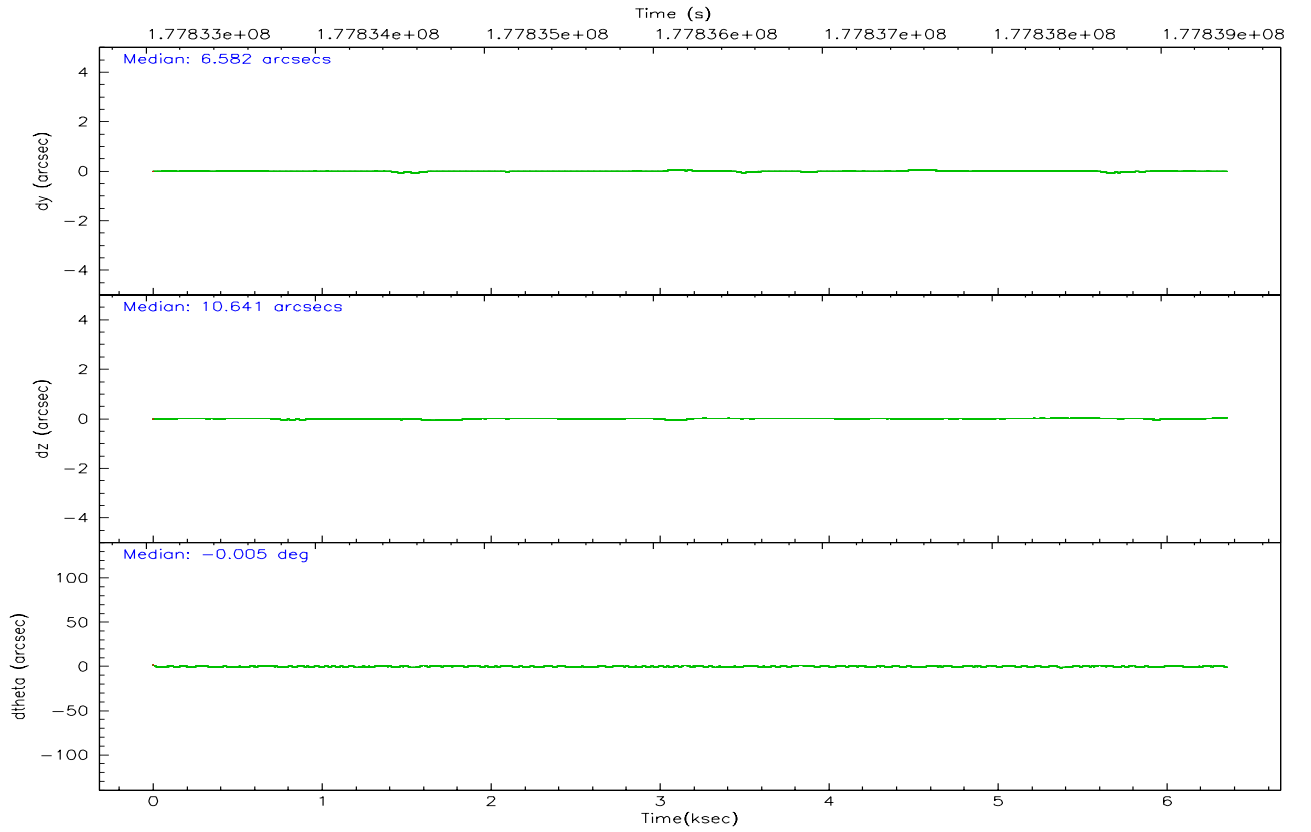
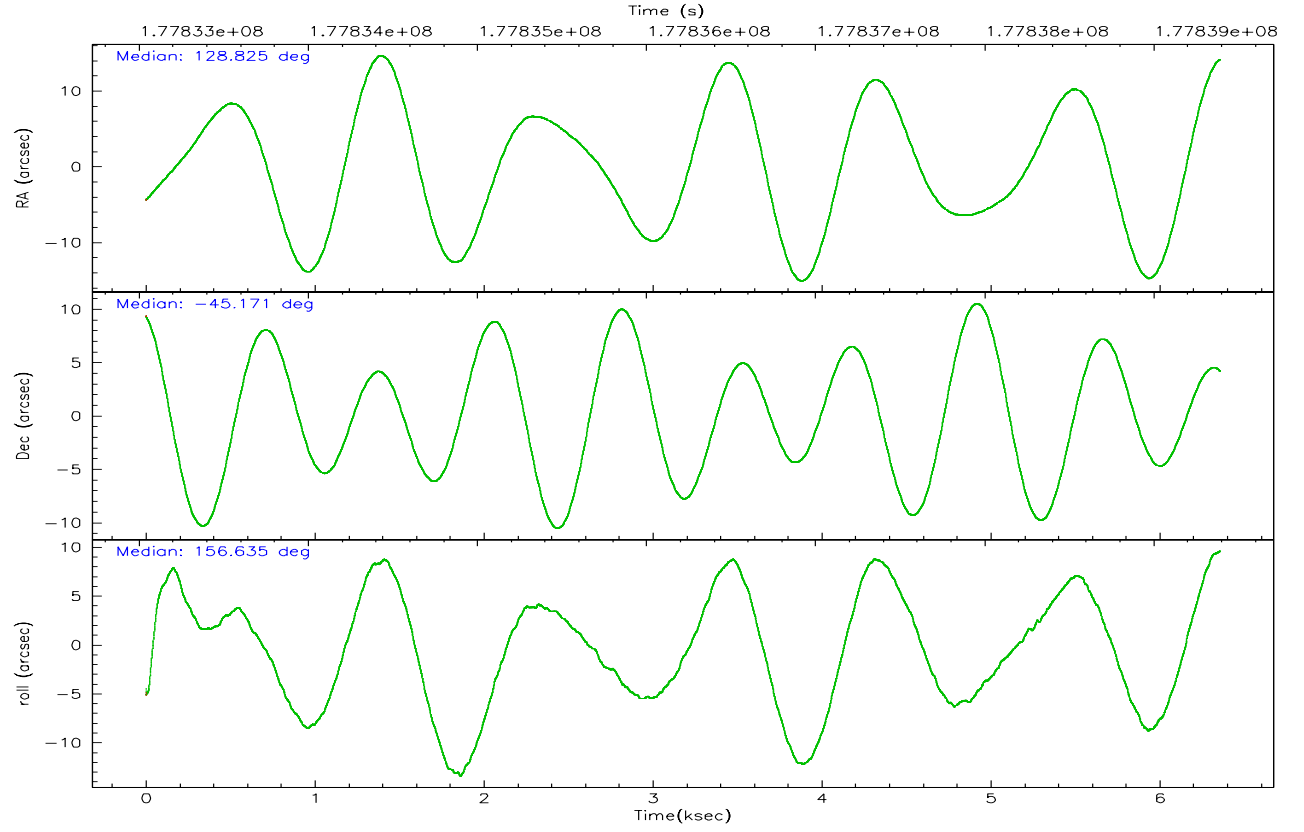
	ccd 0	ccd 1	ccd 2	ccd 3	ccd 6	ccd 7
grade 0 events	3576	3948	4306	4605	6292	24201
	11%	12%	13%	13%	16%	20%
grade 1 events	24	30	27	27	32	149
	0%	0%	0%	0%	0%	0%
grade 2 events	1003	1038	906	996	1236	23956
	3%	3%	2%	2%	3%	20%
grade 3 events	403	480	399	427	474	8987
	1%	1%	1%	1%	1%	7%
grade 4 events	380	445	408	424	438	8908
	1%	1%	1%	1%	1%	7%
grade 5 events	1301	1315	1212	1429	1591	3611
	4%	4%	3%	4%	4%	3%
grade 6 events	655	793	623	624	883	25287
	2%	2%	1%	1%	2%	21%
grade 7 events	24713	23499	25192	25201	26903	24582
	77%	74%	76%	74%	71%	20%

2.2 Compared Parameters

Parameter	Planned	Actual	Parameter	Planned	Actual
Instrument	ACIS	ACIS	Obspar format version number	6	6
Detector	ACIS-012367	ACIS-012367	Obspar file type	PREDICTED	ACTUAL
Grating	NONE	NONE	Obspar update status	NONE	UPDATED
Data mode	FAINT	FAINT	On-chip summing requested	N	N
Observation mode	POINTING	POINTING	Subarray requested	NONE	NONE
Pointing RA	128.863023	128.8247716791451	Alternating exposures requested	N	N
Pointing Dec	-45.167710	-45.17125218577617	Primary exposure time	0.000000	3.2
Pointing Roll	156.518987	156.6484814883623			
SIM focus pos (mm)	-0.684267	-0.6828225247311905			
SIM defocus (mm)	0	0.001444936568705701			
SIM translation stage pos (mm)	-190.132523	-190.1400660498719			
SIM translation stage offset (mm)	0	0.00754346686406393			
Observation start time	177834397.184000	177832851.61575			
Observation start date	2003-08-21T06:25:33	2003-08-21T06:00:51			
Observation end time	177839397.184000	177839936.41605			
Observation end date	2003-08-21T07:48:53	2003-08-21T07:58:56			
Read mode	TIMED	TIMED			

2.3 Aspect



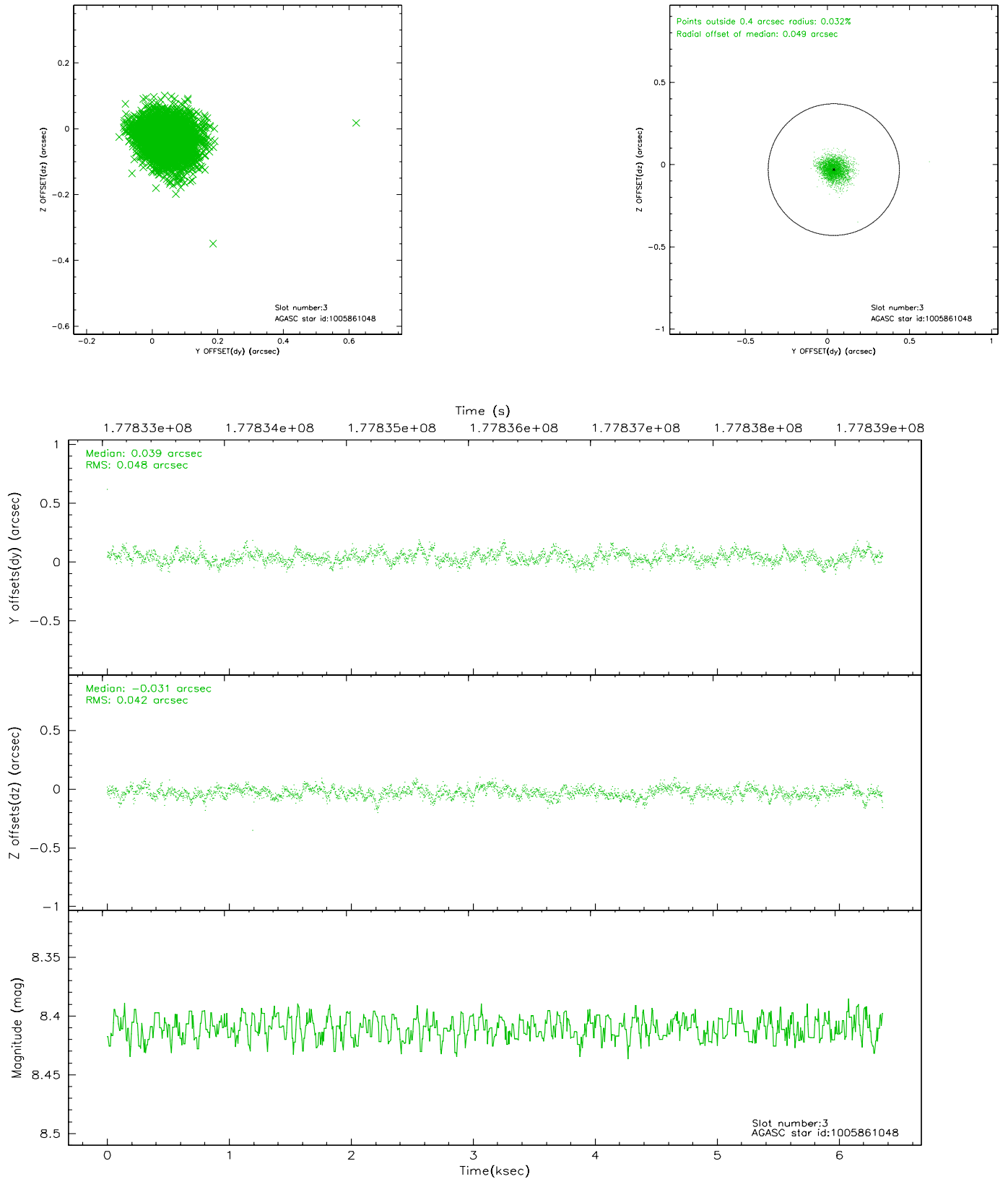


Slot Statistics

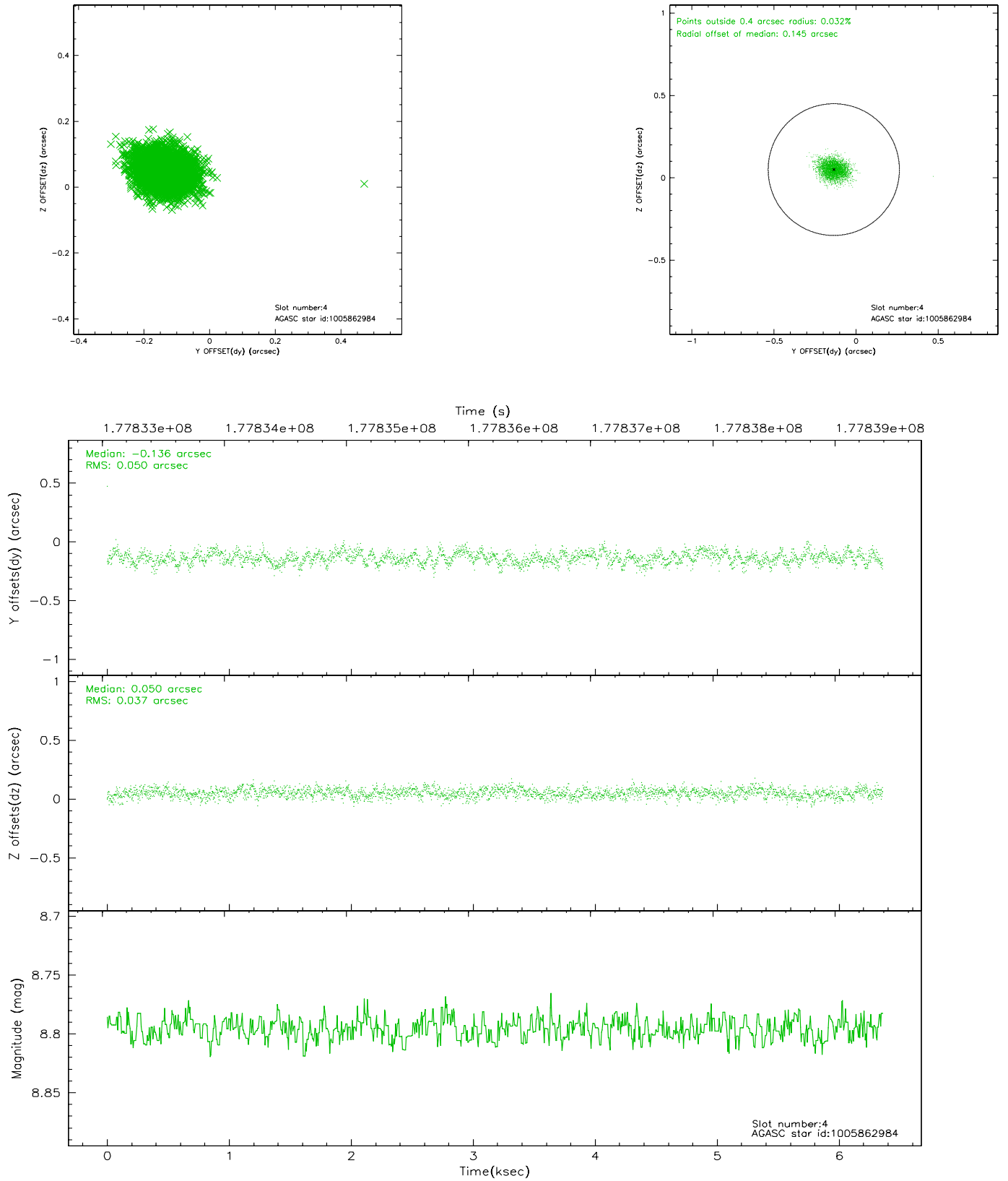
slot	status	id	mag	n_pts	med_dy	med_dz	dr1	dr2	ra	dec	mean_y	mean_z
0	FID	ACIS-S-1	7.18	1551	-0.017	-0.023	0.007	0.011	0.000000	0.000000	936.69	-1727.56
1	FID	ACIS-S-4	7.20	1551	0.006	0.028	0.006	0.009	0.000000	0.000000	2154.63	175.70
2	FID	ACIS-S-5	7.23	1551	-0.015	0.007	0.005	0.009	0.000000	0.000000	-1810.99	170.31
3	GUIDE	1005861048	8.41	3100	0.039	-0.031	0.067	0.111	128.669106	-44.528323	1374.20	-1912.17
4	GUIDE	1005862984	8.80	3100	-0.136	0.050	0.065	0.105	128.482680	-44.577316	1741.53	-1558.99
5	GUIDE	1005871096	9.00	3101	-0.053	0.033	0.072	0.118	128.774147	-44.764566	787.56	-1240.86
6	GUIDE	1005871784	8.02	3101	0.131	-0.019	0.071	0.111	128.533947	-44.544833	1668.28	-1718.83
7	GUIDE	1068263200	9.13	3100	0.018	-0.033	0.079	0.130	128.222628	-45.344390	1230.75	1234.49

2.4 Star Slots

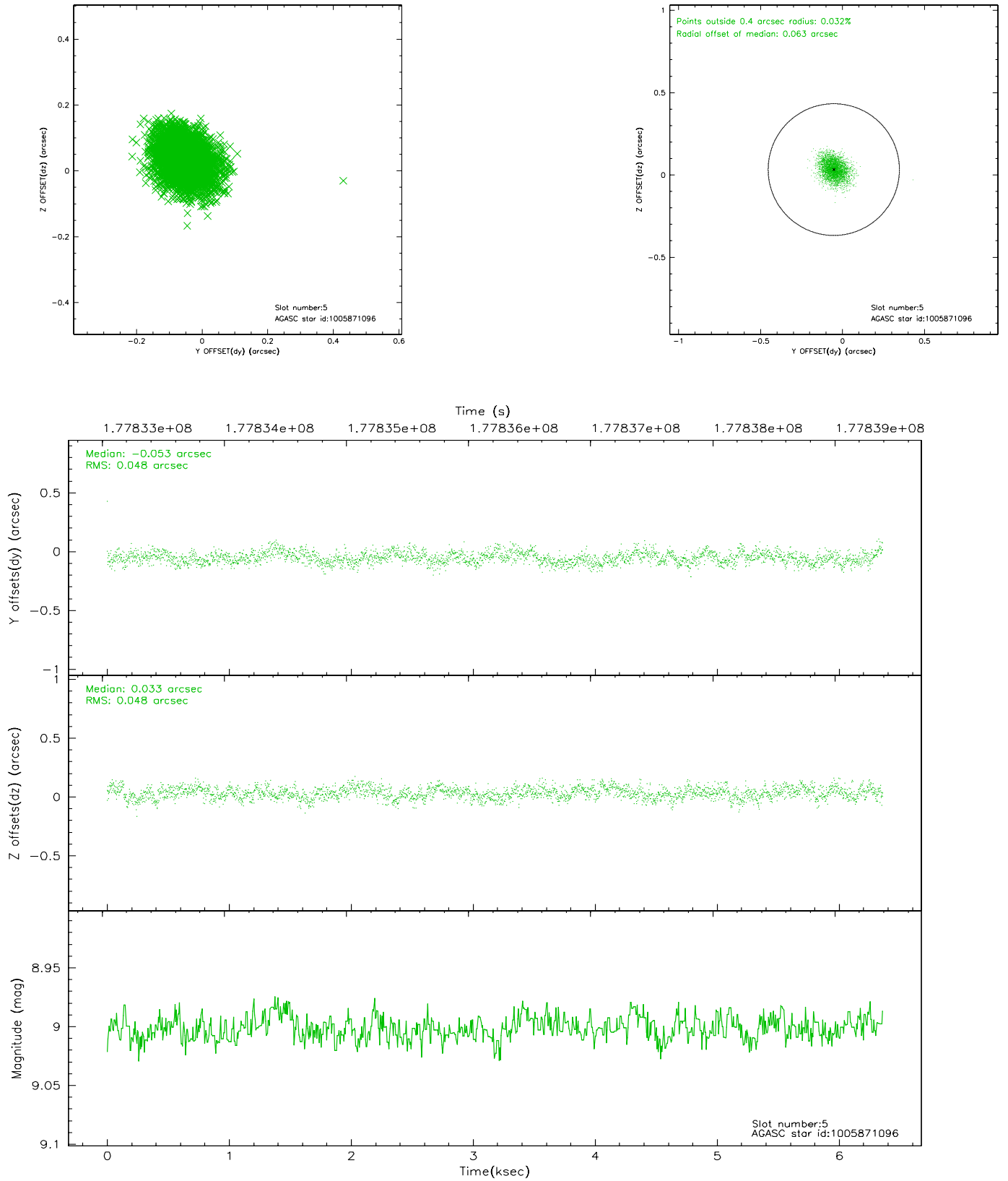
2.4.1 Slot 3



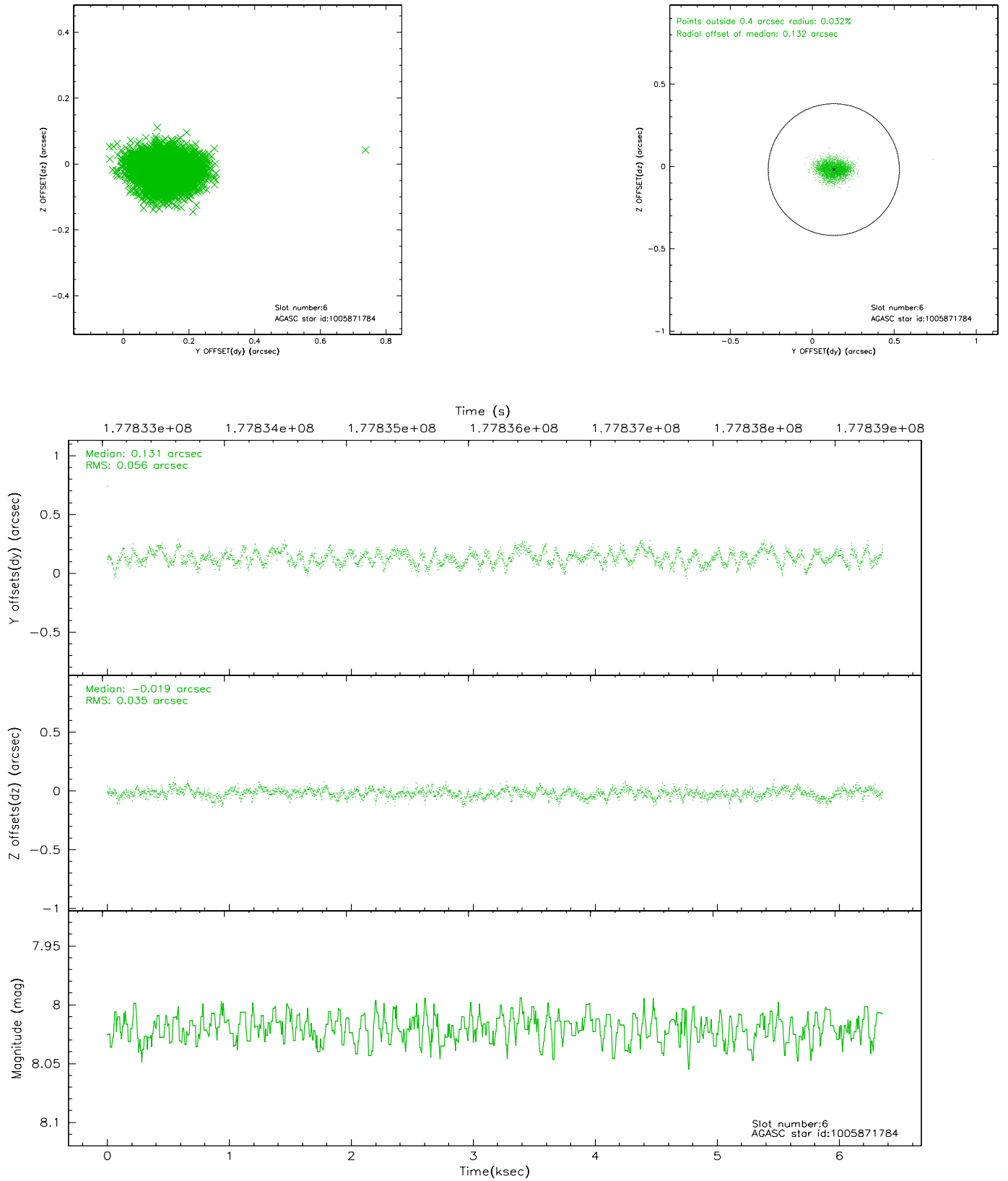
2.4.2 Slot 4



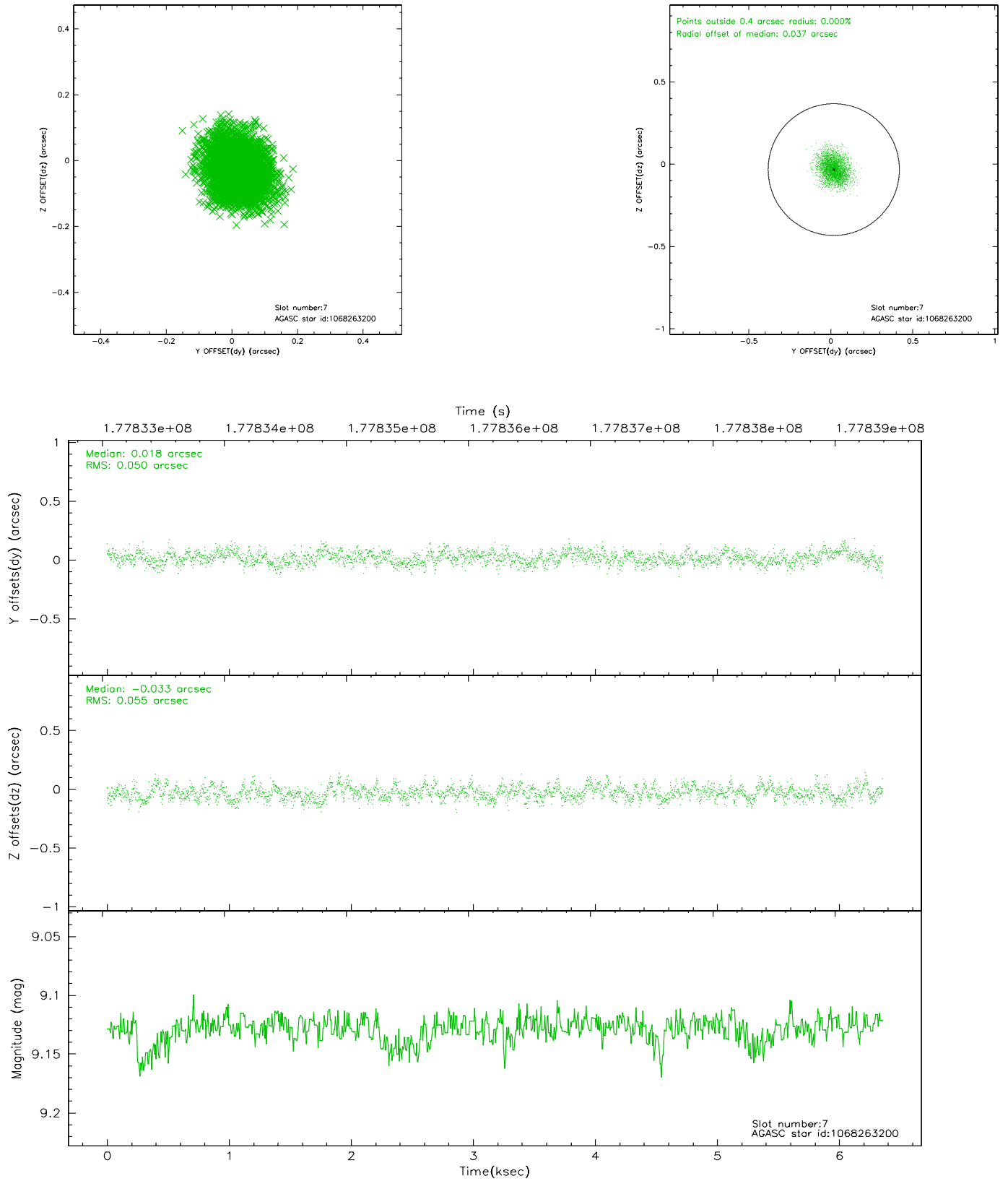
2.4.3 Slot 5



2.4.4 Slot 6

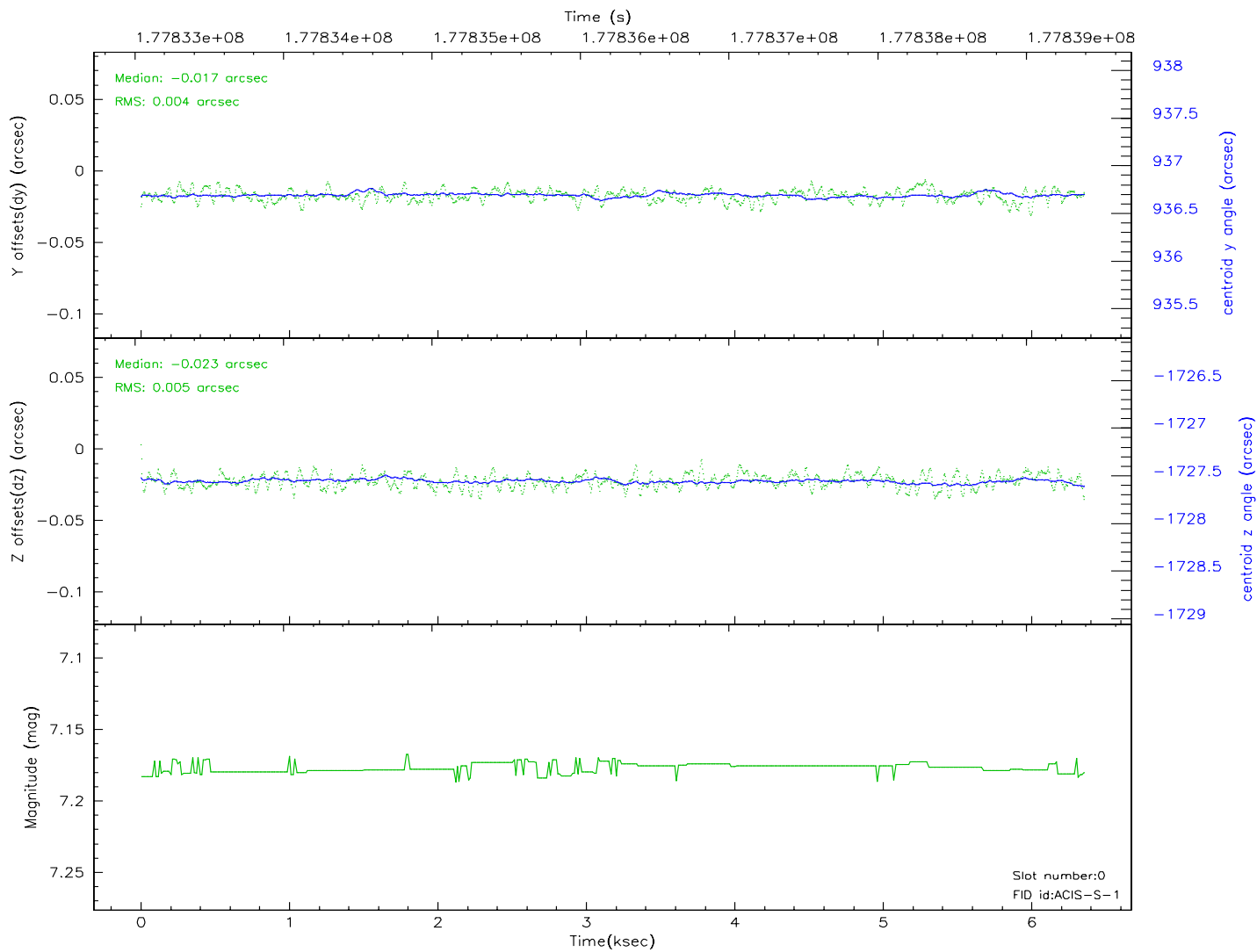
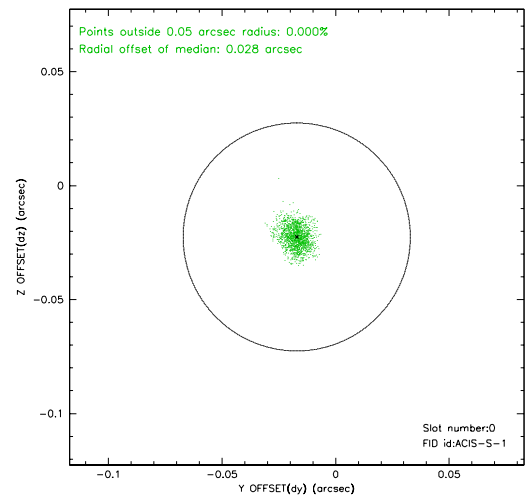
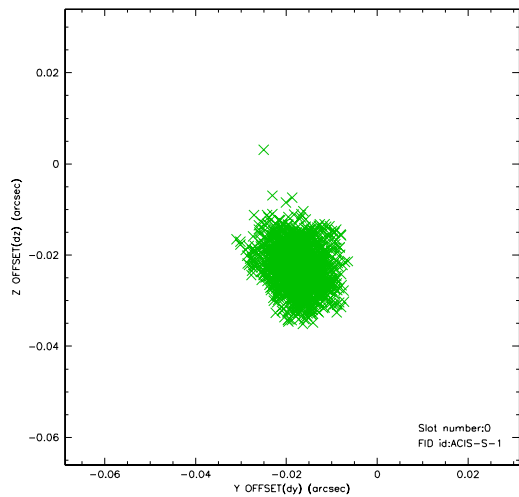


2.4.5 Slot 7

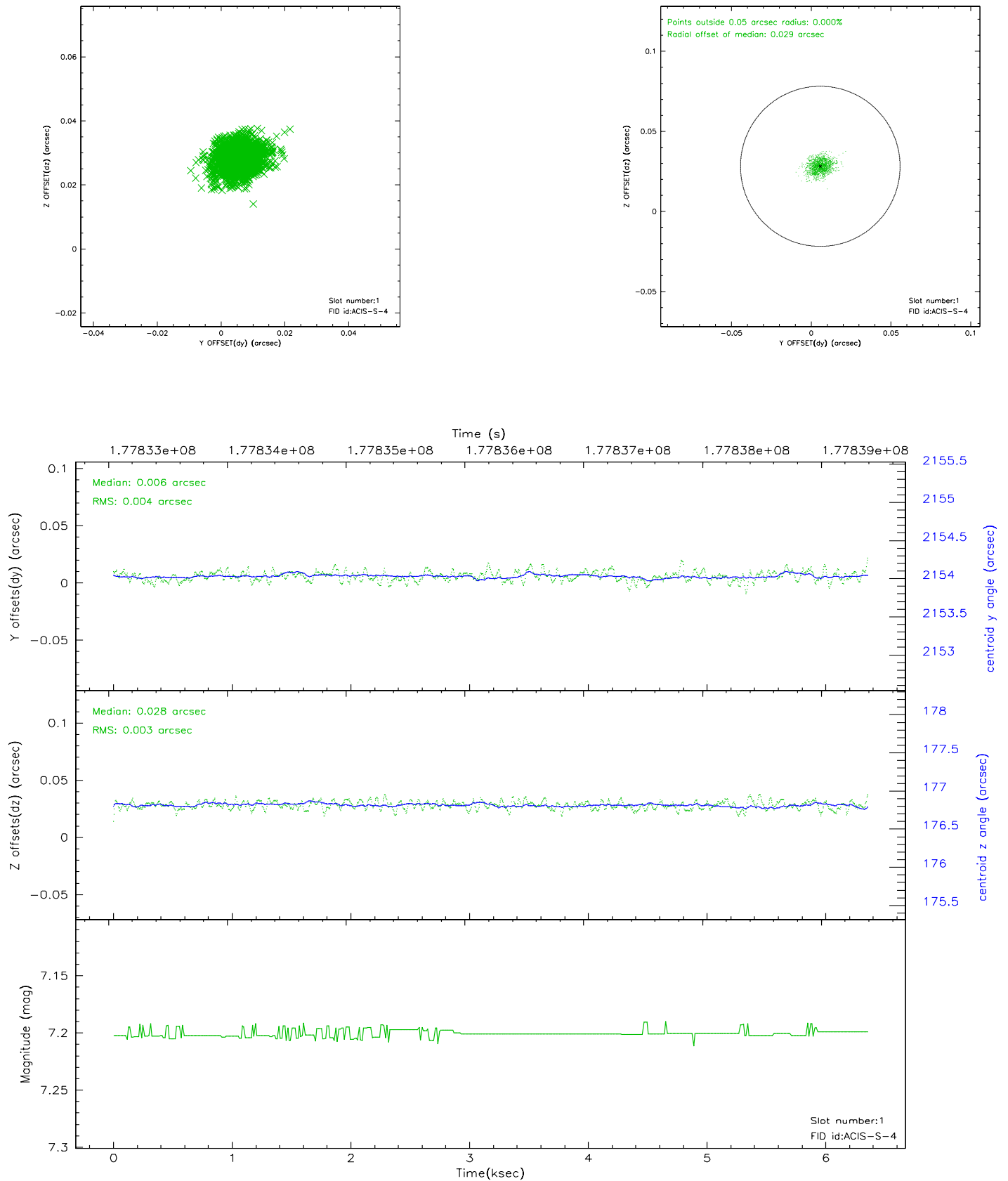


2.5 FID Slots

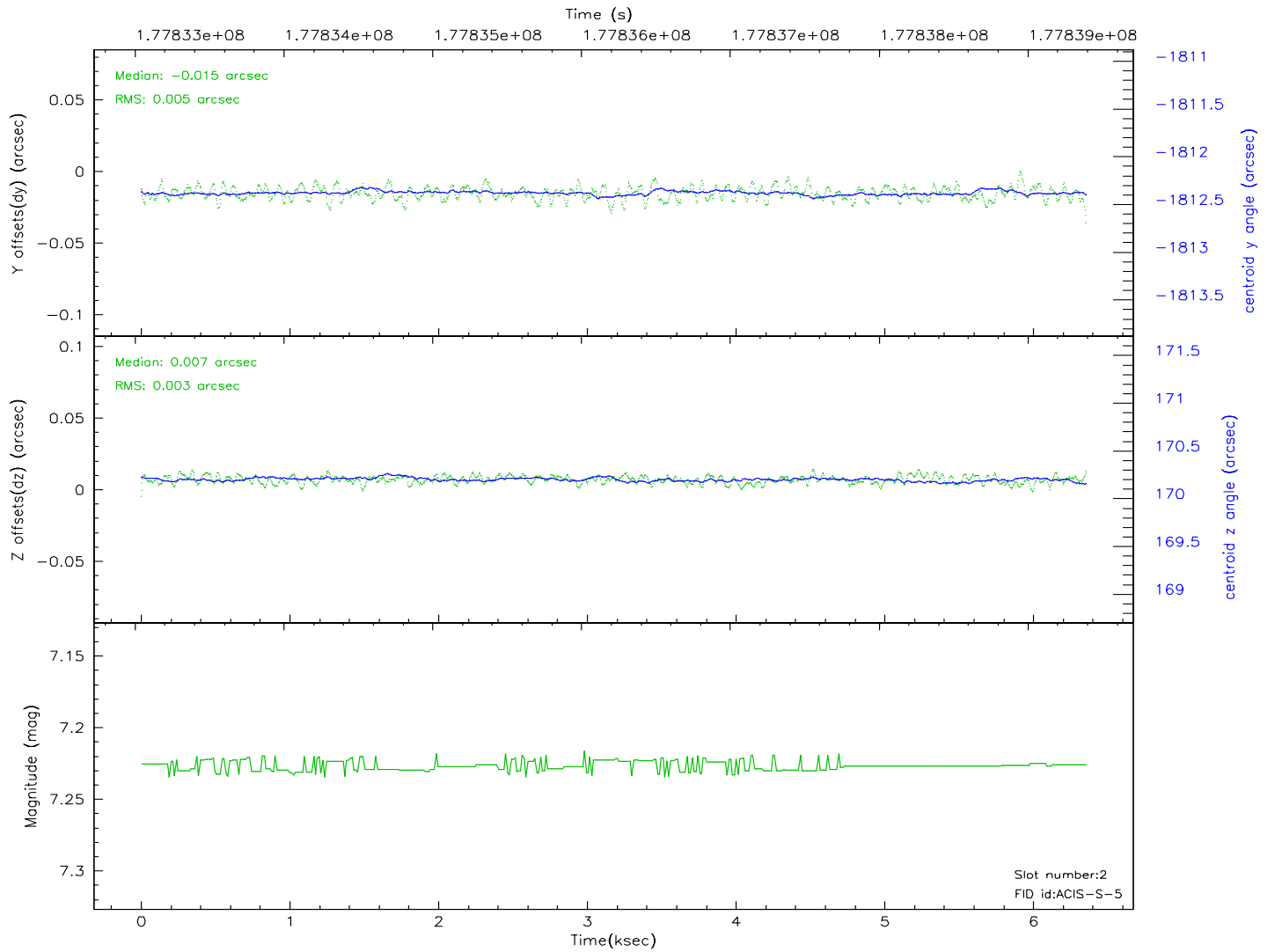
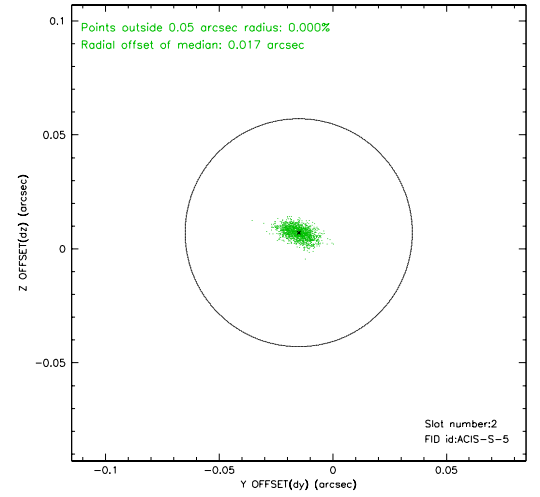
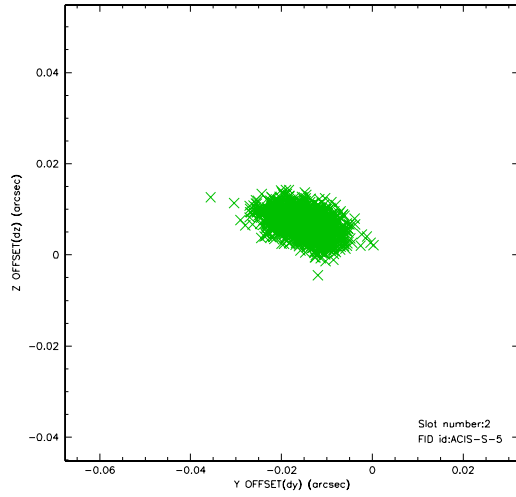
2.5.1 Slot 0



2.5.2 Slot 1



2.5.3 Slot 2



3 Point Sources

18.88 arcmin



A Summary

A.1 Status

V&V Scientist	Beth Sundheim
V&V Date (YYYY-MM-DD)	2006.07.07
V&V Edition	1
V&V Disposition and Status	OK
V&V Charge Time	4.959

A.2 Comments