

V&V Reference Report

L2 ASCDS Version : 8.4.5

Observation 3834 - L2 Version 3
Chandra X-Ray Center

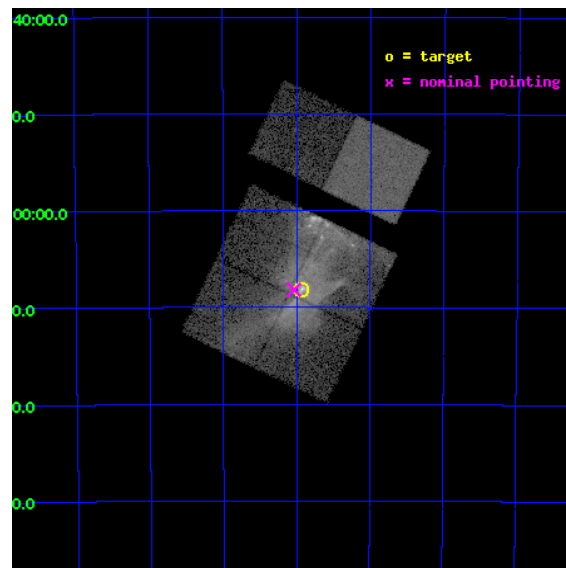
L2 Processing Date : Oct 26 2012

Contents

1	Front	2
2	OBI	3
2.1	OBI	3
2.1.1	Images	3
2.1.2	Bias	3
2.1.3	Parameters	4
2.1.4	Events	4
2.2	Compared Parameters	5
2.3	Aspect	6
2.4	Star Slots	9
2.4.1	Slot 3	9
2.4.2	Slot 4	10
2.4.3	Slot 5	11
2.4.4	Slot 6	12
2.4.5	Slot 7	13
2.5	FID Slots	14
2.5.1	Slot 0	14
2.5.2	Slot 1	15
2.5.3	Slot 2	16
A	Summary	17
A.1	Status	17
A.2	Comments	17

1 Front

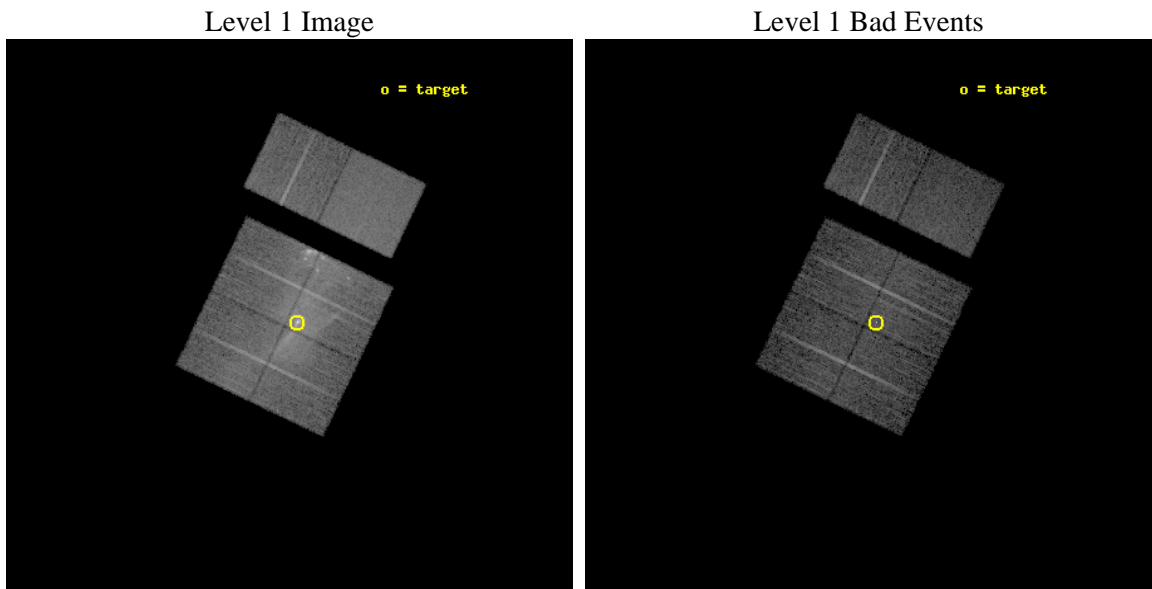
seq_num	500313	Sequence number
obs_id	3834	Observation id
title	MULTI-EPOCH OBSERVATIONS OF PSR B1509-58 AND ITS NEBULA	Proposal t
observer	Prof. Bryan Gaensler	Principal investigator
object	PSR B1509-58	Source name
dtcycle	0	
cycle	P	events from which exps? Prim/Second/Both
ra_targ	228.481667	Observer's specified target RA [deg]
dec_targ	-59.135889	Observer's specified target Dec [deg]
ra_nom	228.5094296372	Nominal RA [deg]
dec_nom	-59.136614954628	Nominal Dec [deg]
roll_nom	25.62401991612	Nominal Roll [deg]
revision	3	Processing version of data
ontime	9589.3482062817	Sum of GTIs [s]
livetime	9467.9221052814	Livetime [s]
ontime0	9589.2250863016	Sum of GTIs [s]
ontime1	9589.2661262751	Sum of GTIs [s]
ontime2	9589.3071662784	Sum of GTIs [s]
ontime3	9589.3482062817	Sum of GTIs [s]
ontime6	9589.4302862883	Sum of GTIs [s]
ontime7	9589.389246285	Sum of GTIs [s]
l2events	156656	Number of level 2 events



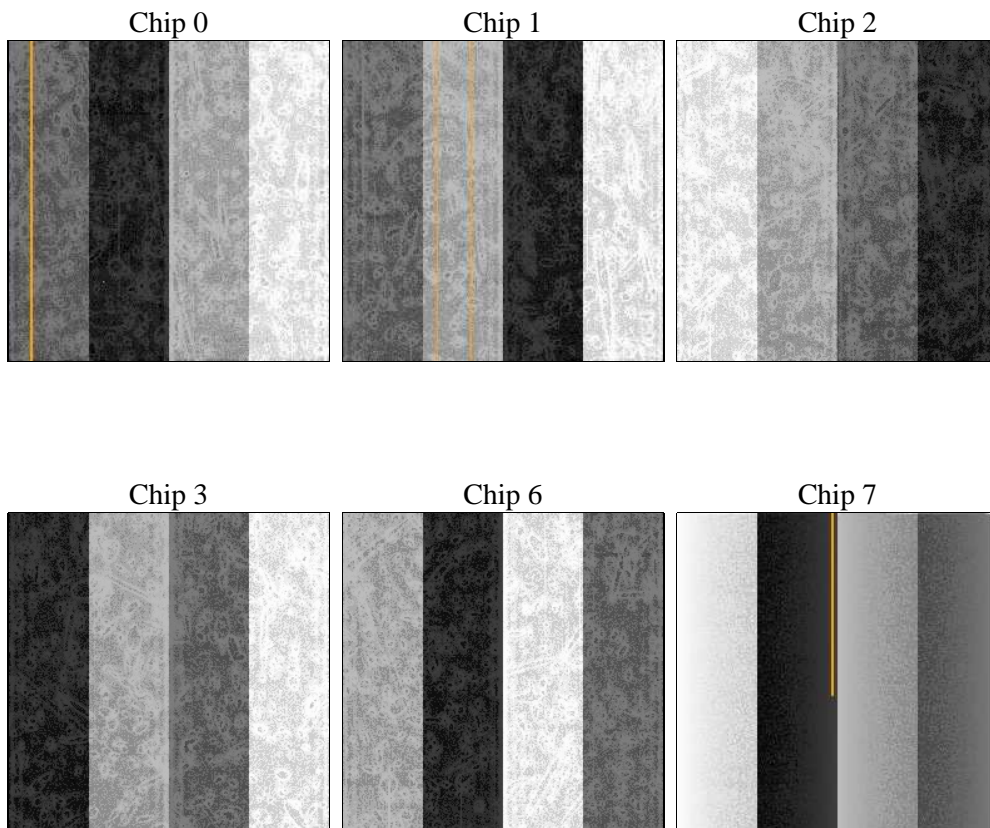
2 OBI

2.1 OBI

2.1.1 Images



2.1.2 Bias



2.1.3 Parameters

obi_num	1	Obi number	sched_exp_time	9625.000000	[s] Scheduled observation exposure time
ascdsver	8.4.5	Processing system revision	ontime	9589.3482062817	Sum of GTIs [s]
caldsver	4.5.2	 	ontime0	9589.2250863016	Sum of GTIs [s]
date	2012-10-26T17:20:15	Date and time of file creation	ontime1	9589.2661262751	Sum of GTIs [s]
revision	3	Processing version of data	ontime2	9589.3071662784	Sum of GTIs [s]
			ontime3	9589.3482062817	Sum of GTIs [s]
			ontime6	9589.4302862883	Sum of GTIs [s]
			ontime7	9589.389246285	Sum of GTIs [s]
			l1events	466972	Number of level 1 events

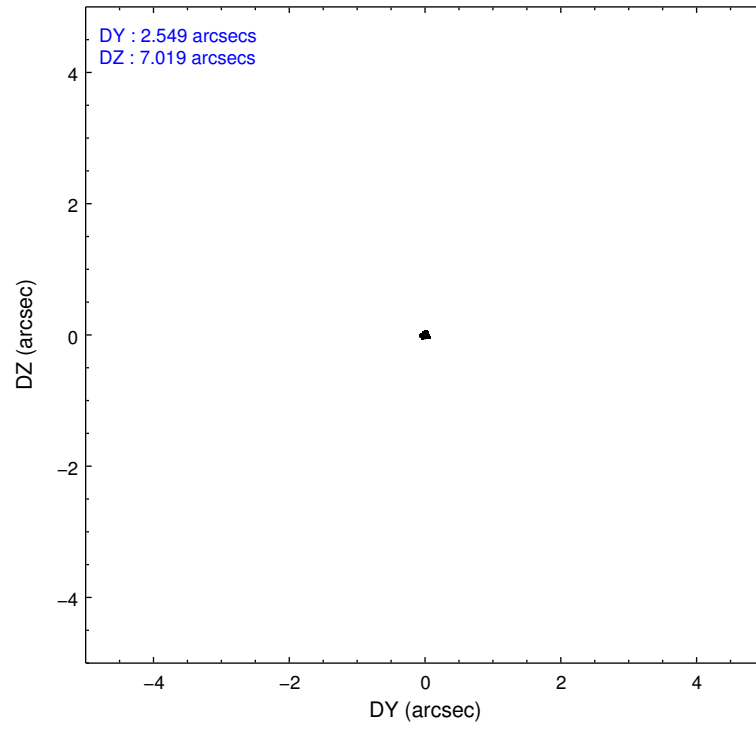
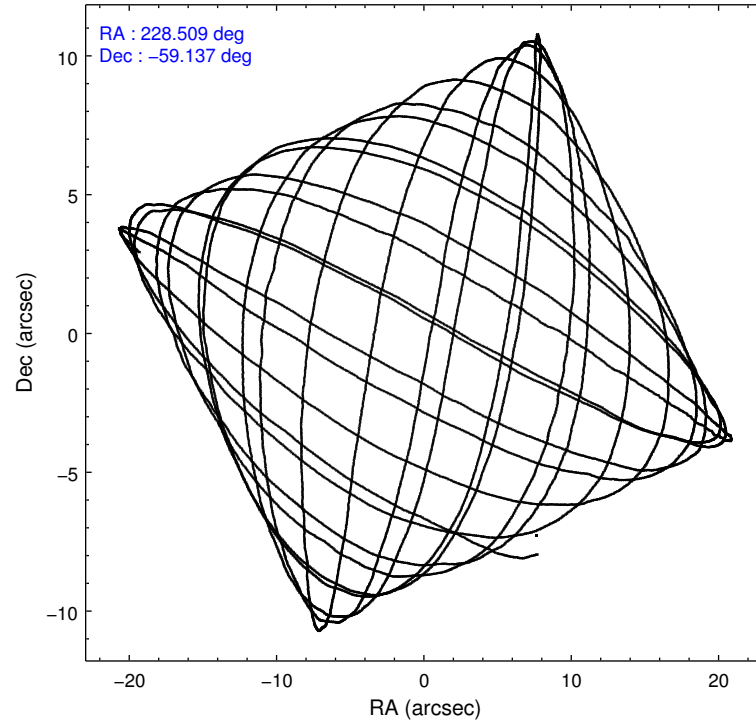
2.1.4 Events

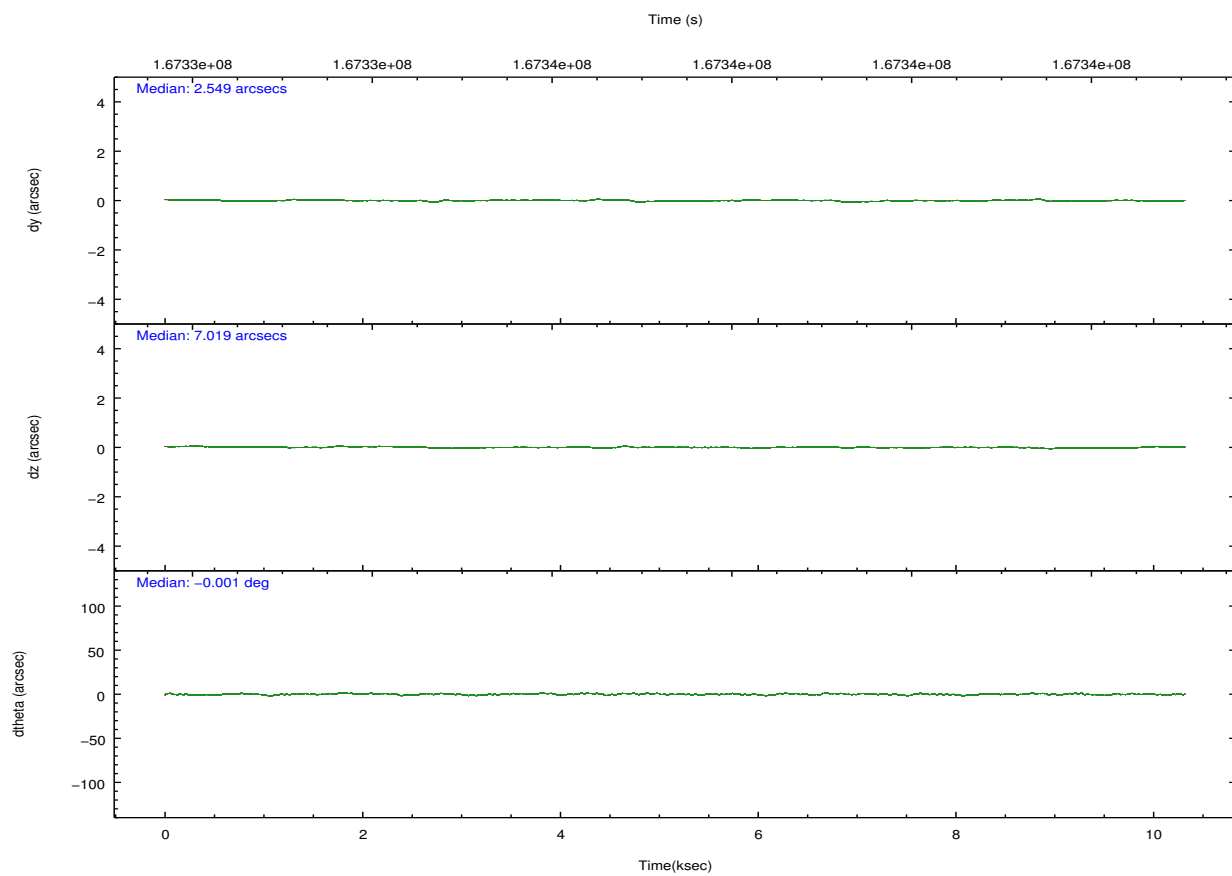
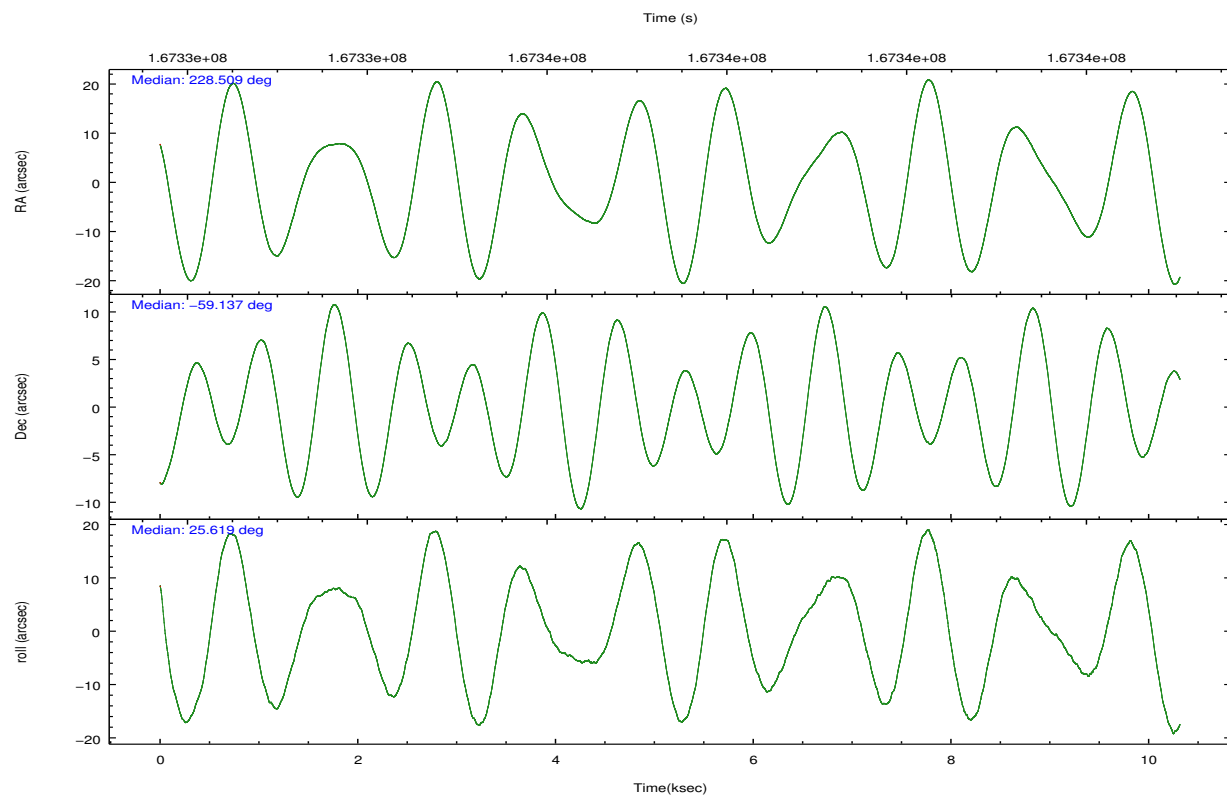
	ccd 0	ccd 1	ccd 2	ccd 3	ccd 6	ccd 7		ccd 0	ccd 1	ccd 2	ccd 3	ccd 6	ccd 7
level 1 events	66149	72528	79544	108113	60176	80462	grade 0 events	11709	16676	20447	38887	3586	3476
rejected events	47930	47461	51590	54910	52108	46142		17%	22%	25%	35%	5%	4%
rejected %	72%	65%	64%	50%	86%	57%	grade 1 events	70	91	123	562	32	73
								0%	0%	0%	0%	0%	0%
							grade 2 events	2658	3597	3376	6493	1583	6839
								4%	4%	4%	6%	2%	8%
							grade 3 events	1129	1355	1289	2385	726	3183
								1%	1%	1%	2%	1%	3%
							grade 4 events	1079	1399	1301	2358	717	3183
								1%	1%	1%	2%	1%	3%
							grade 5 events	2404	2555	2362	3247	2809	7520
								3%	3%	2%	3%	4%	9%
							grade 6 events	1647	2051	1553	3093	1458	17653
								2%	2%	1%	2%	2%	21%
							grade 7 events	45453	44804	49093	51088	49265	38535
								68%	61%	61%	47%	81%	47%

2.2 Compared Parameters

Parameter	Planned	Actual	Parameter	Planned	Actual
Instrument	ACIS	ACIS	Obspar format version number	7	7
Detector	ACIS-012367	ACIS-012367	Obspar file type	PREDICTED	ACTUAL
Grating	NONE	NONE	Obspar update status	NONE	UPDATED
Data mode	FAINT	FAINT	Number of optional ACIS chips dropped	0	0
Observation mode	POINTING	POINTING	On-chip summing requested	N	N
[deg] Pointing RA	228.479568	228.5094296372038	Subarray requested	NONE	NONE
[deg] Pointing Dec	-59.159284	-59.13661495462816	Alternating exposures requested	N	N
[deg] Pointing Roll	25.389690	25.62401991611972	[s] Primary exposure time	0.000000	3.2
[mm] SIM focus pos	-0.782348	-0.7809083437167272			
[mm] SIM defocus	0	0.001439871863259334			
[mm] SIM translation stage pos	-233.592463	-233.5874344608287			
[mm] SIM translation stage offset	0	-0.005018542100998502			
[s] Observation start time (MET)	167332899.184000	167331688.75691			
Observation start date	2003-04-21T17:20:35	2003-04-21T17:01:28			
[s] Observation end time (MET)	167342524.184000	167343654.09492			
Observation end date	2003-04-21T20:01:00	2003-04-21T20:20:54			
Read mode	TIMED	TIMED			

2.3 Aspect



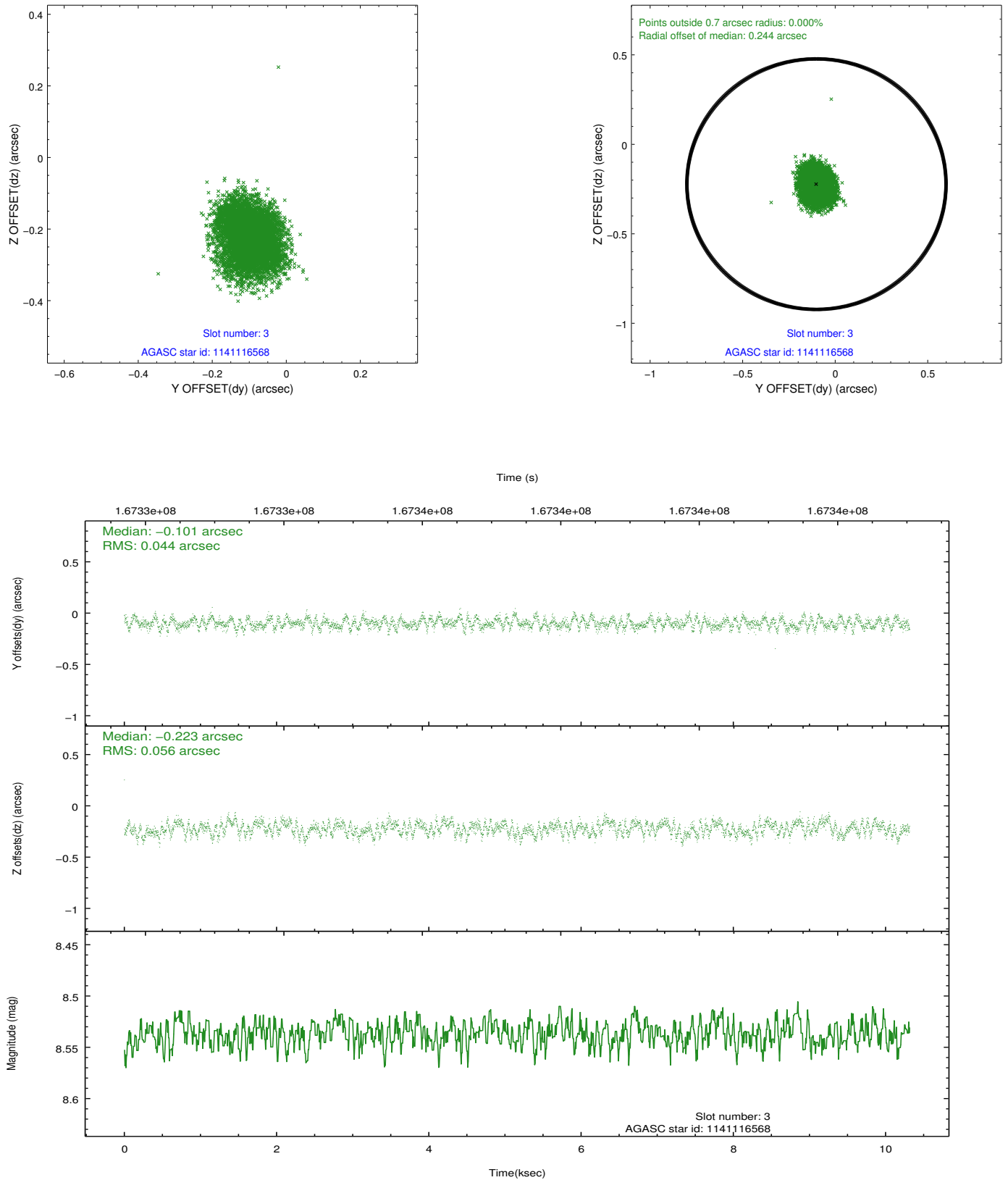


Slot Statistics

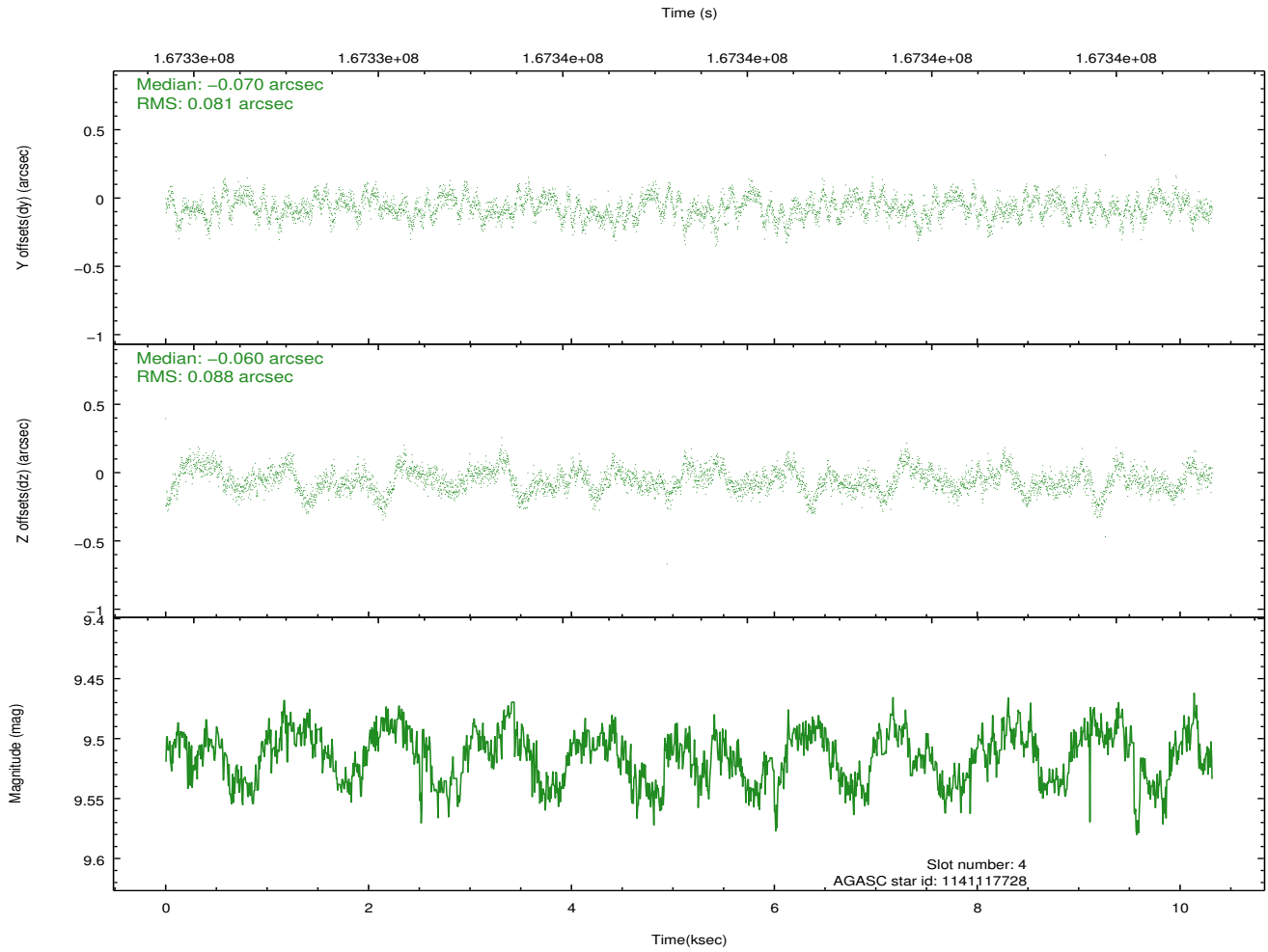
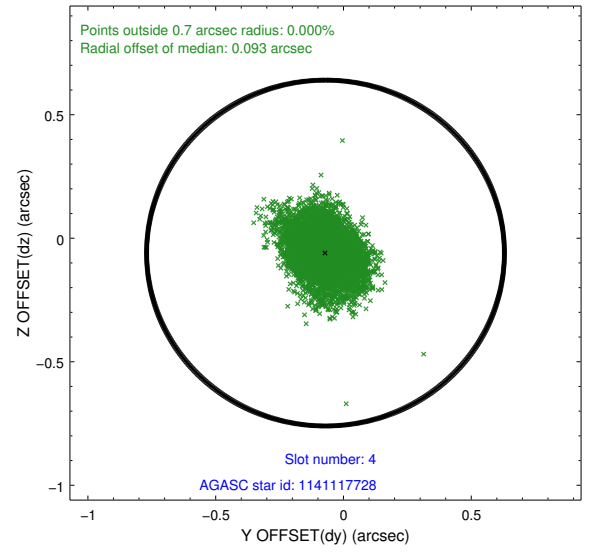
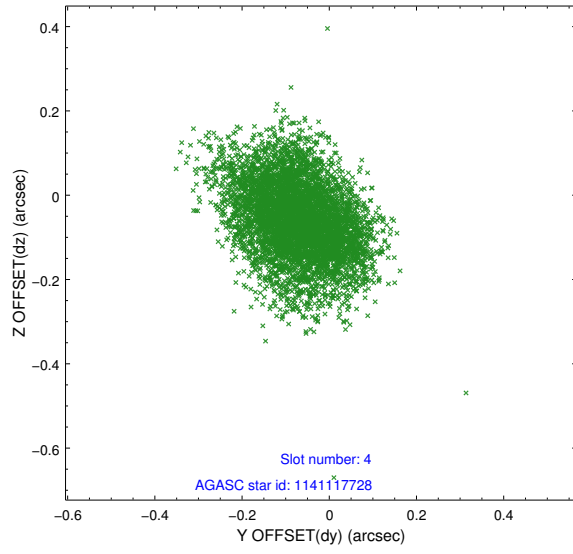
slot	status	id	mag	n_pts	med_dy	med_dz	dr1	dr2	ra	dec	mean_y	mean_z
0	FID	ACIS-I-1	7.24	2517	0.013	0.008	0.009	0.016	0.000000	0.000000	937.25	-830.42
1	FID	ACIS-I-5	7.24	2517	-0.083	0.055	0.008	0.014	0.000000	0.000000	-1810.63	1066.91
2	FID	ACIS-I-6	7.26	2517	-0.021	0.007	0.008	0.013	0.000000	0.000000	402.26	1711.90
3	GUIDE	1141116568	8.54	5030	-0.101	-0.223	0.077	0.119	228.578452	-58.520066	1154.63	1998.98
4	GUIDE	1141117728	9.51	5030	-0.070	-0.060	0.127	0.205	228.608878	-58.618268	1054.34	1655.82
5	GUIDE	1141118720	9.45	5031	0.152	0.120	0.082	0.134	227.772709	-59.614232	-1867.26	-933.65
6	GUIDE	1141119096	9.45	5023	0.152	0.027	0.111	0.178	228.052751	-59.529718	-1276.77	-873.33
7	GUIDE	1141119896	8.40	5032	-0.133	0.140	0.068	0.108	229.637327	-59.405643	1528.26	-1727.36

2.4 Star Slots

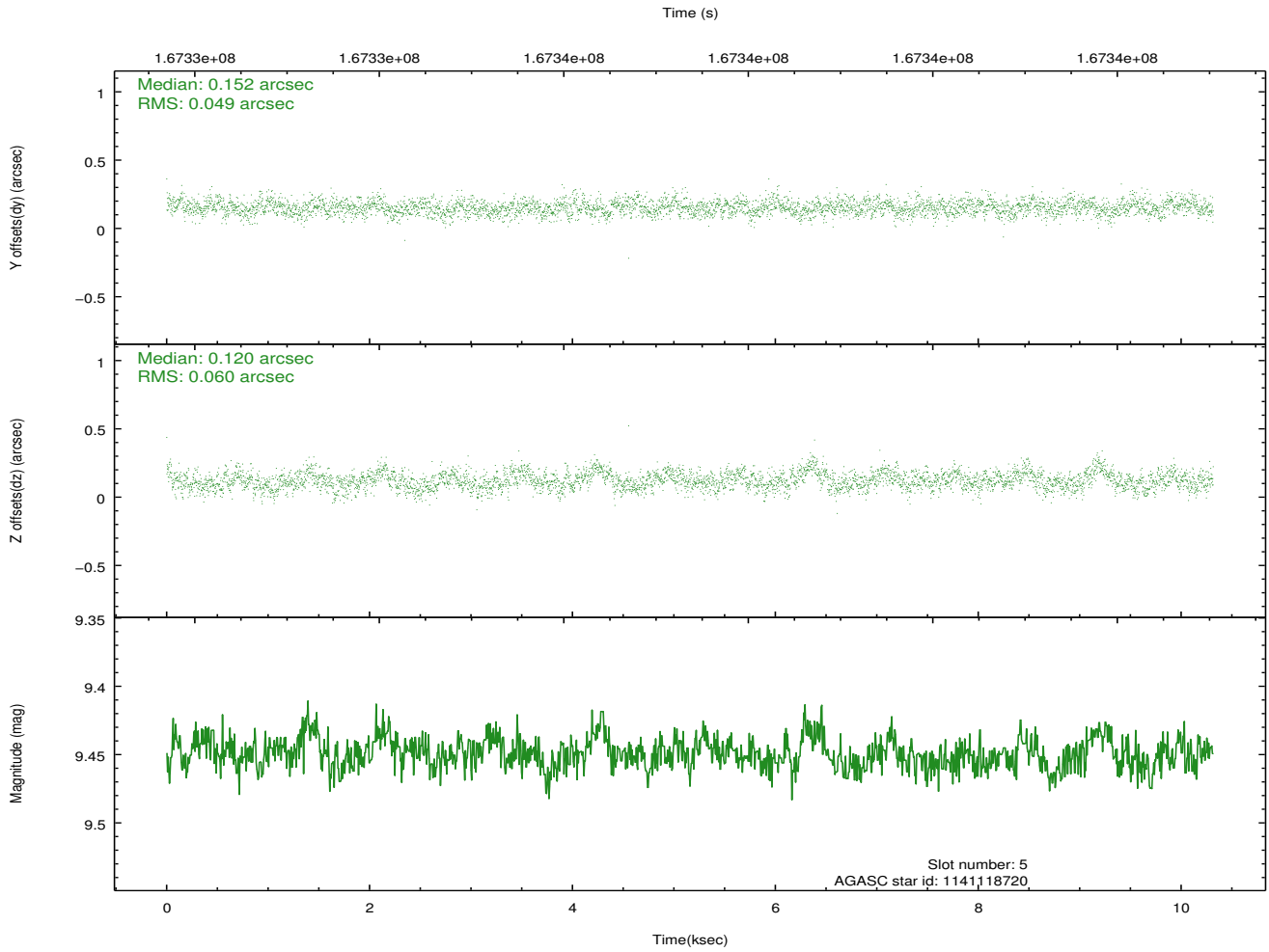
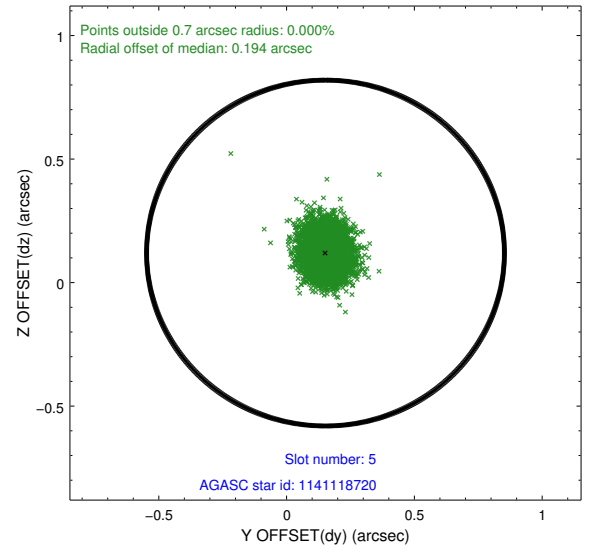
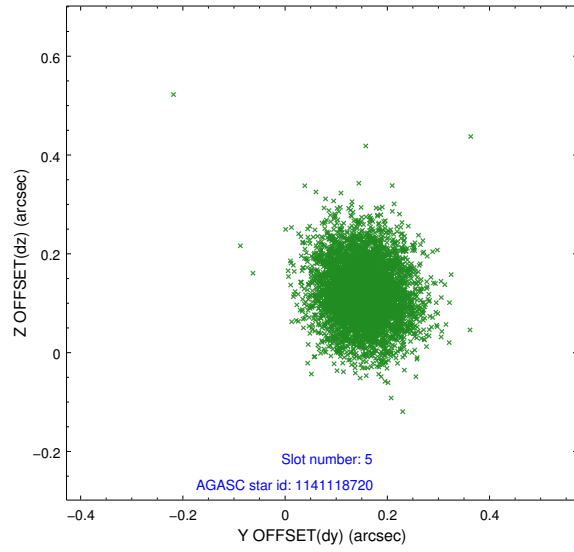
2.4.1 Slot 3



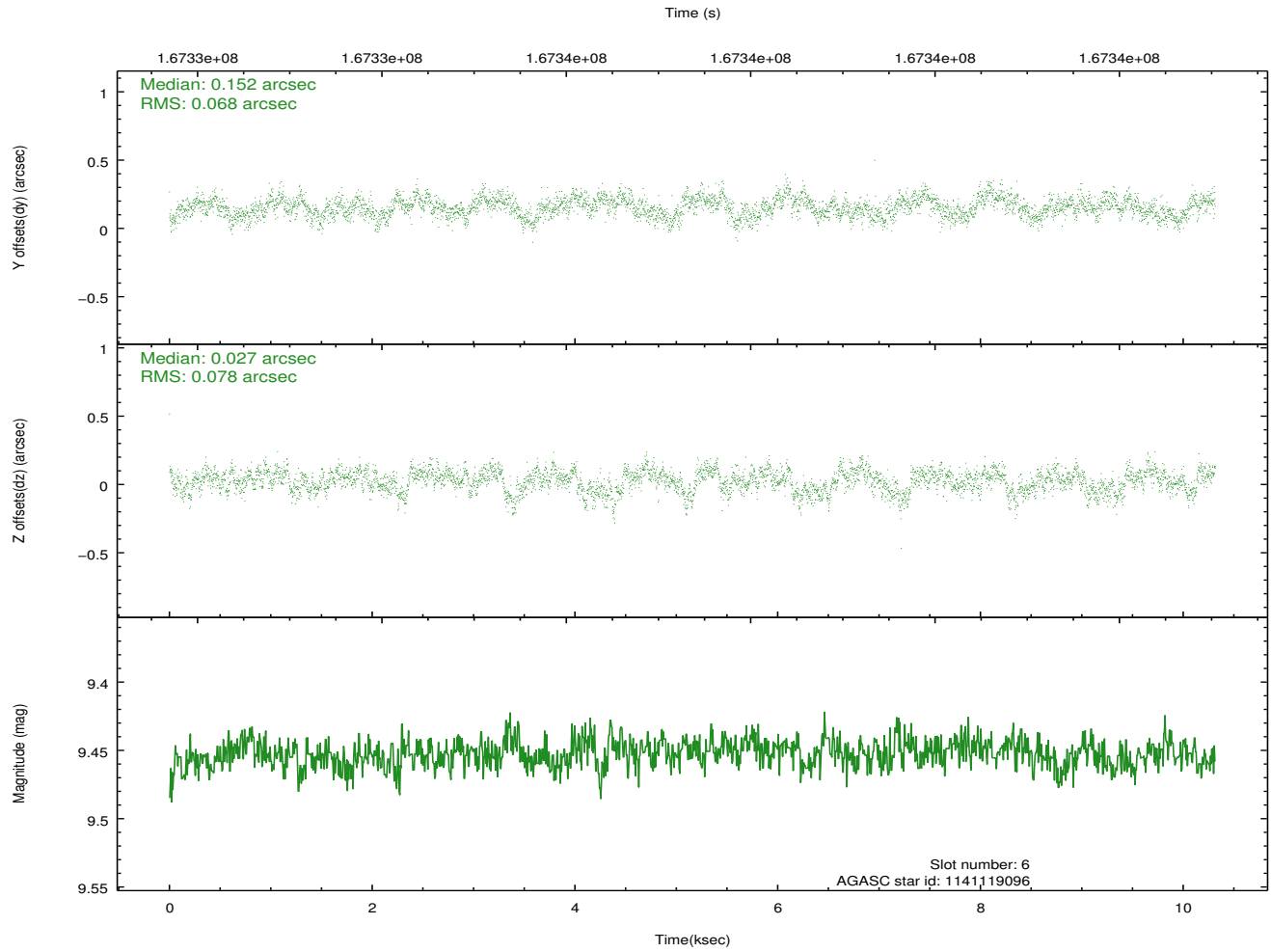
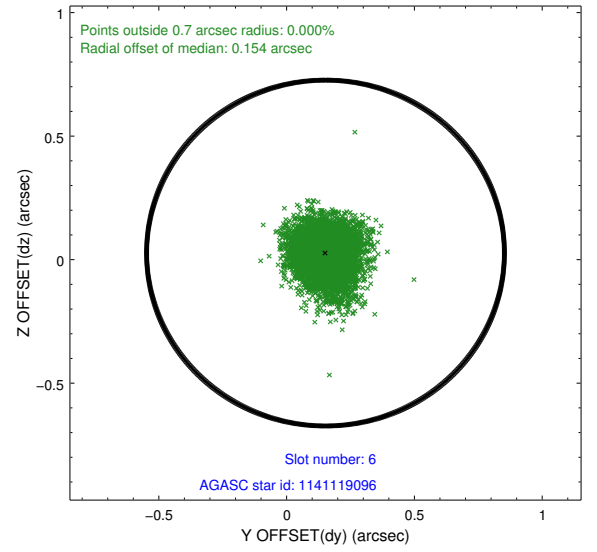
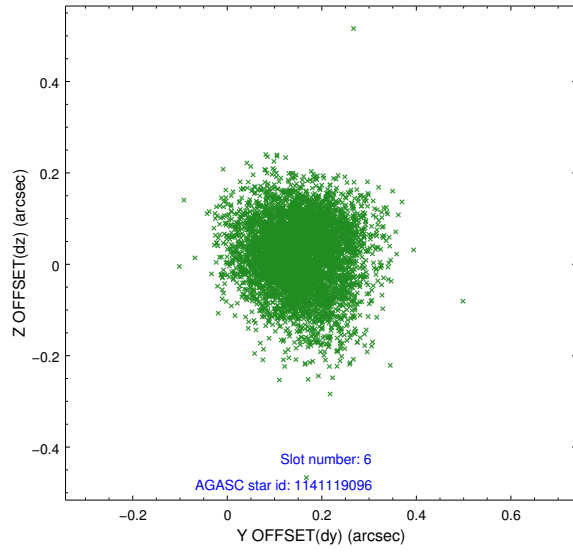
2.4.2 Slot 4



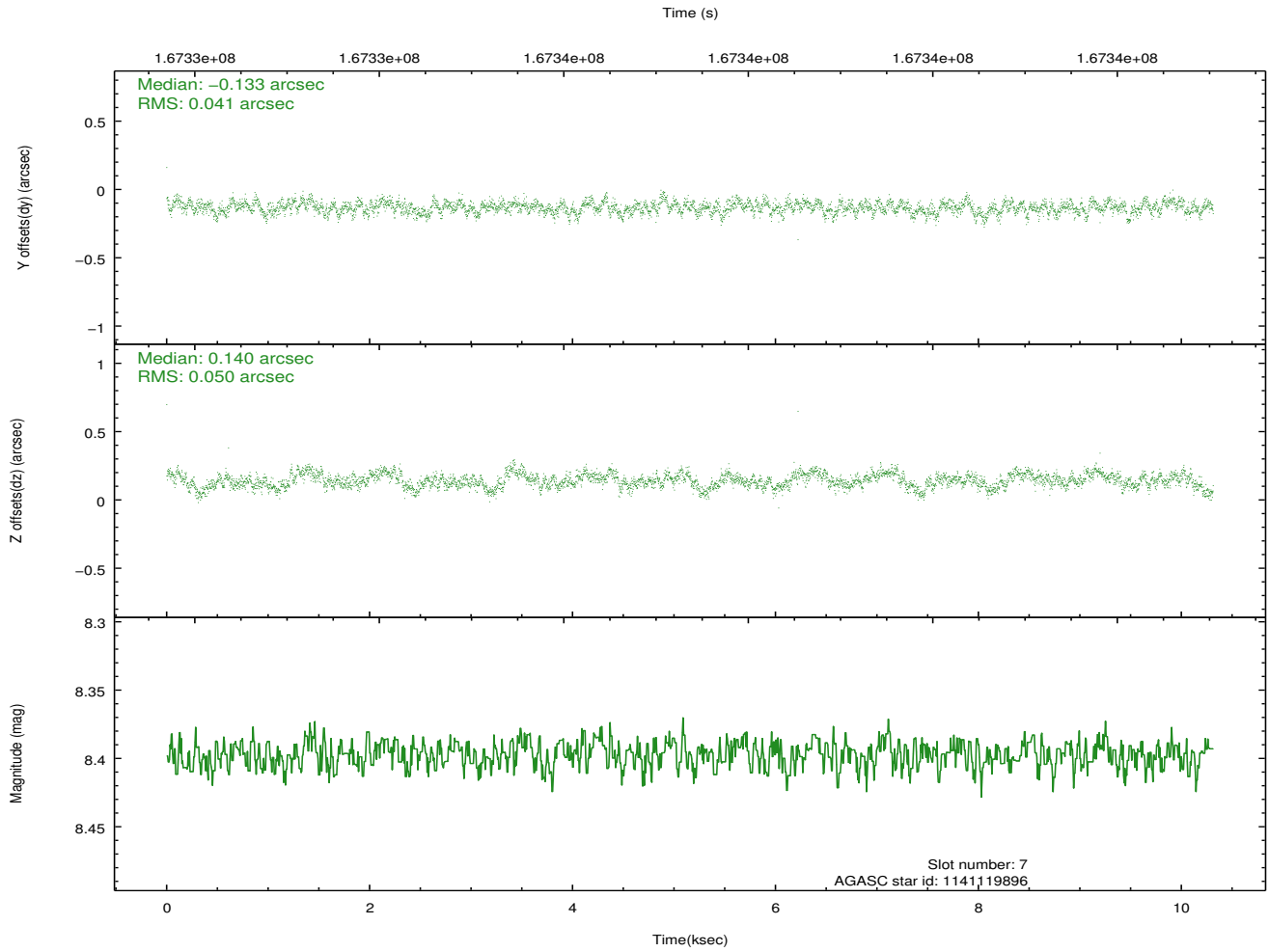
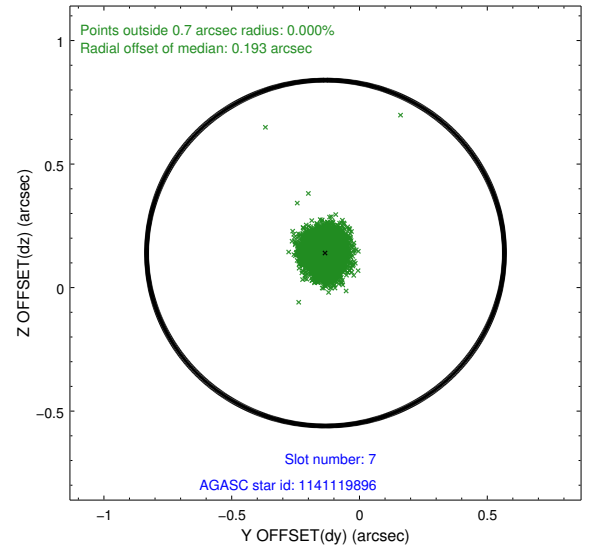
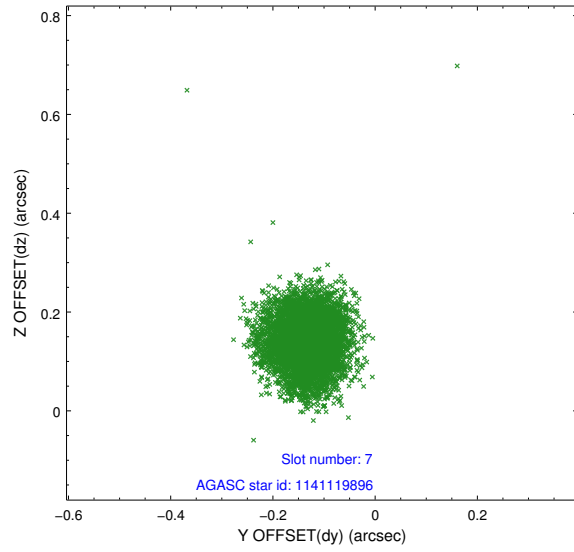
2.4.3 Slot 5



2.4.4 Slot 6

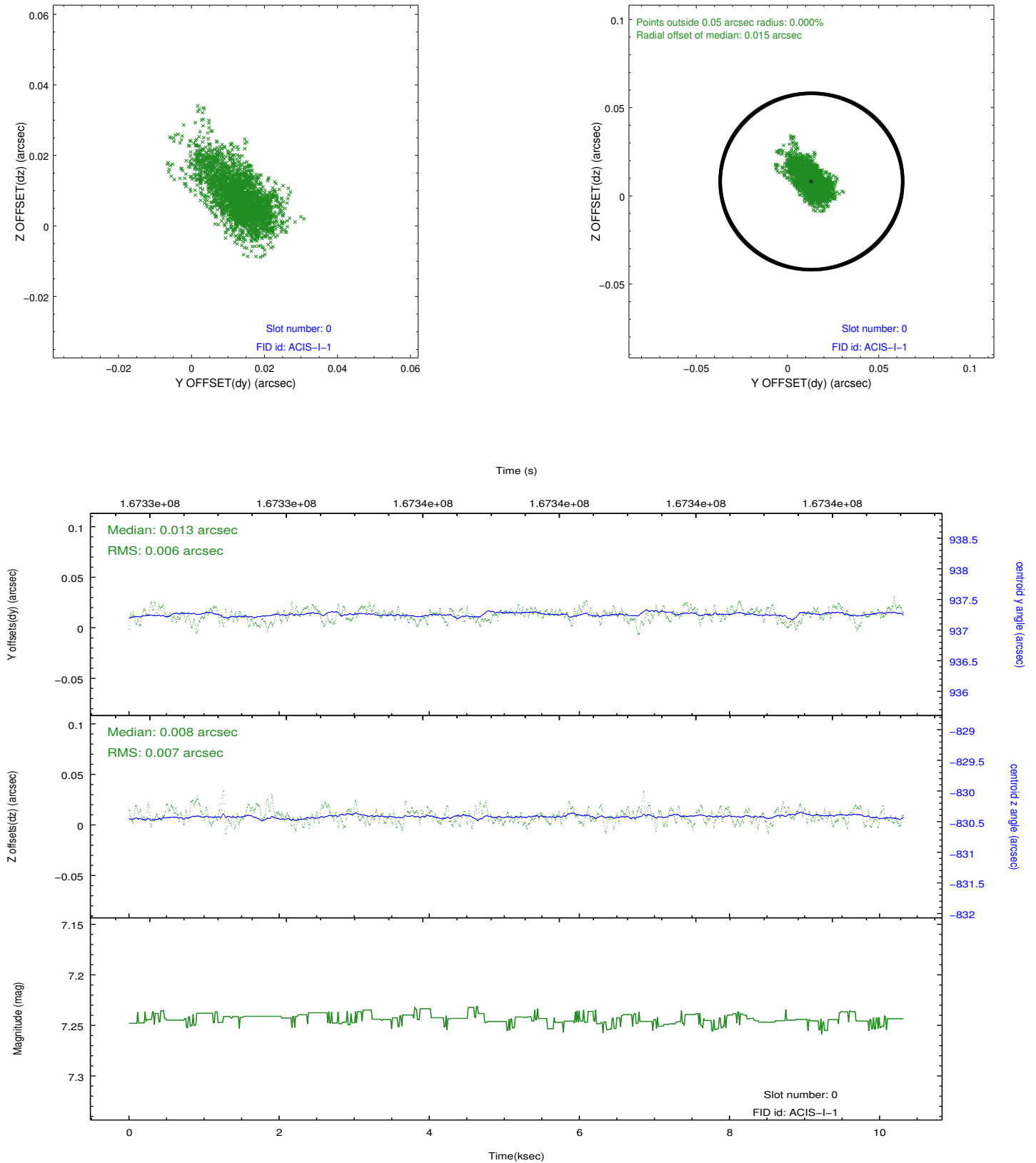


2.4.5 Slot 7

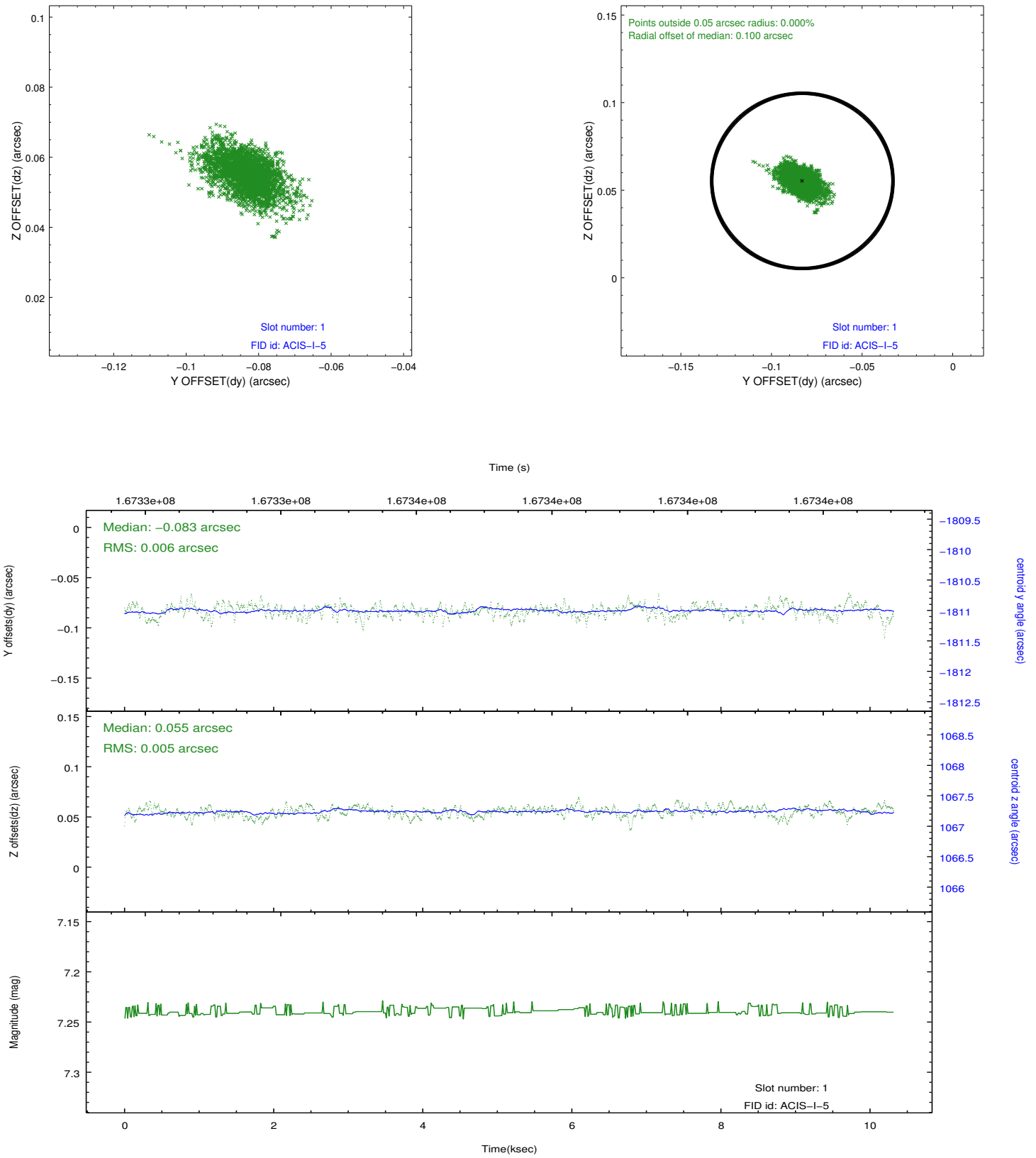


2.5 FID Slots

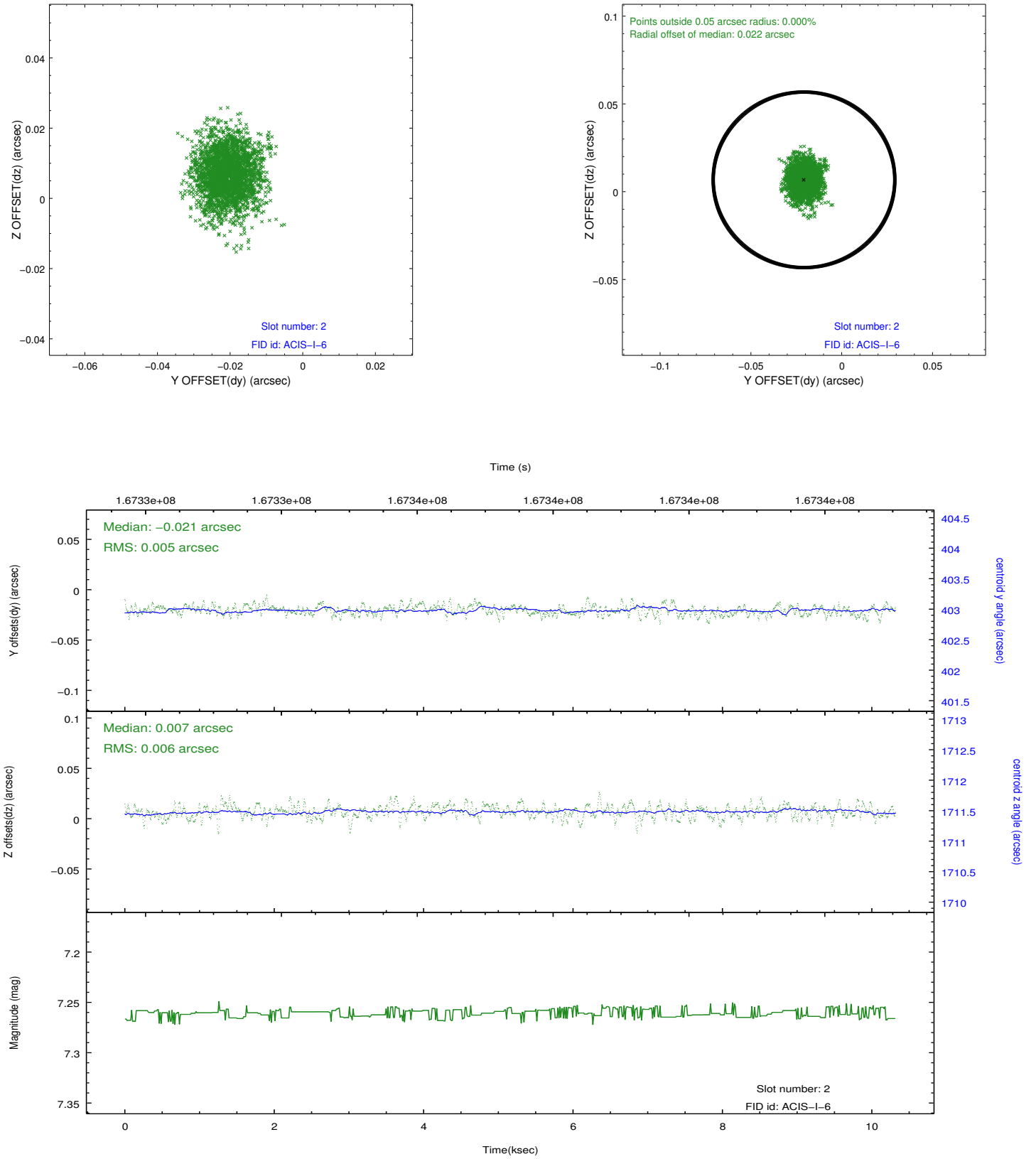
2.5.1 Slot 0



2.5.2 Slot 1



2.5.3 Slot 2



A Summary

A.1 Status

V&V Scientist	Beth Sundheim
V&V Date (YYYY-MM-DD)	2012.11.14
V&V Edition	1
V&V Disposition and Status	OK
V&V Charge Time	9.59

A.2 Comments