

V&V Reference Report

L2 ASCDS Version : 7.6.8

Observation 3831 - L2 Version 001
Chandra X-Ray Center

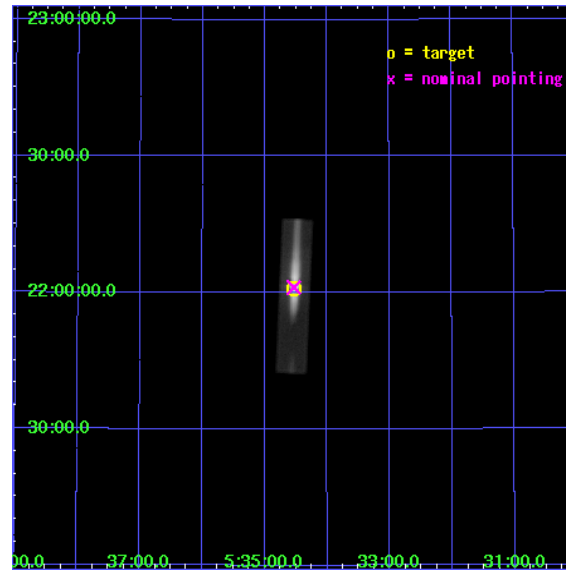
L2 Processing Date : Jul 3 2006

Contents

1	Front	2
2	OBI	3
2.1	OBI	3
2.1.1	Images	3
2.1.2	Parameters	4
2.1.3	Events	4
2.2	Compared Parameters	5
2.3	Aspect	6
2.4	Star Slots	9
2.4.1	Slot 3	9
2.4.2	Slot 4	10
2.4.3	Slot 5	11
2.4.4	Slot 6	12
2.4.5	Slot 7	13
2.5	FID Slots	14
2.5.1	Slot 1	14
2.5.2	Slot 2	15
3	Gratings	16
3.1	LETG Arm	16
A	Summary	18
A.1	Status	18
A.2	Comments	18

1 Front

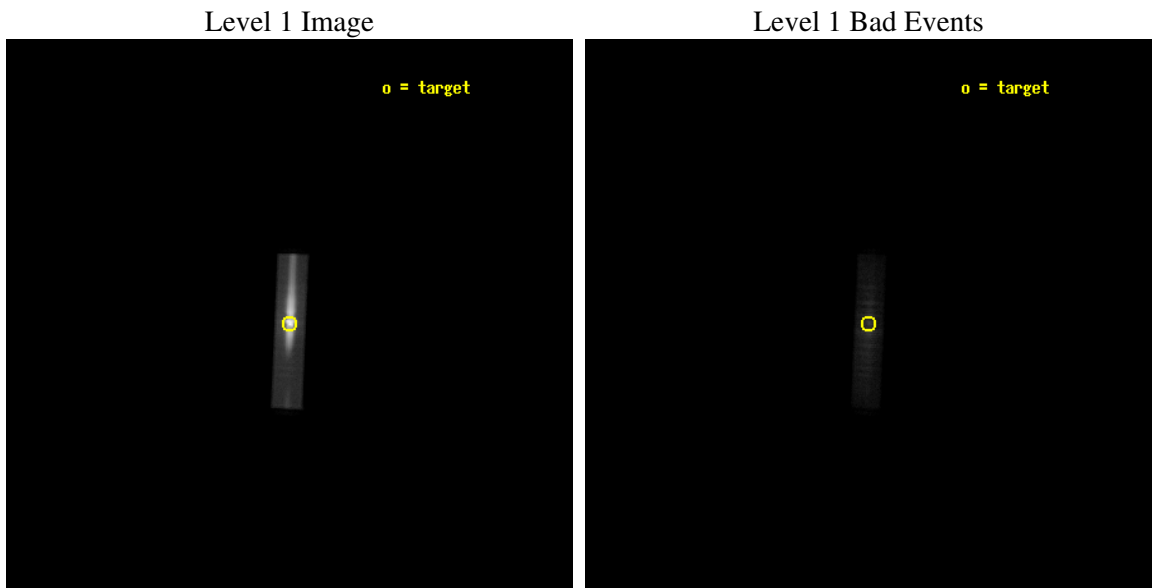
seq_num	500310
obs_id	3831
title	SIMULTANEOUS X-RAY AND OPTICAL HIGH SPEED PHOTOMETRY OF THE CRAB PULSAR
observer	Dr. Peter Predehl
object	CRAB PULSAR
ra_targ	83.633333
dec_targ	22.014444
ra_nom	83.633228067234
dec_nom	22.019264023861
roll_nom	92.370609045831
revision	2
ontime	8852.15662992
livetime	6498.7627067734
l2events	1515453



2 OBI

2.1 OBI

2.1.1 Images



2.1.2 Parameters

obi_num	0
ascdsver	7.6.8
caldbver	3.2.2
date	2006-07-03T15:37:00
revision	2

sched_exp_time	9000.000000
ontime	8940.050383687
l1events	1640968

2.1.3 Events

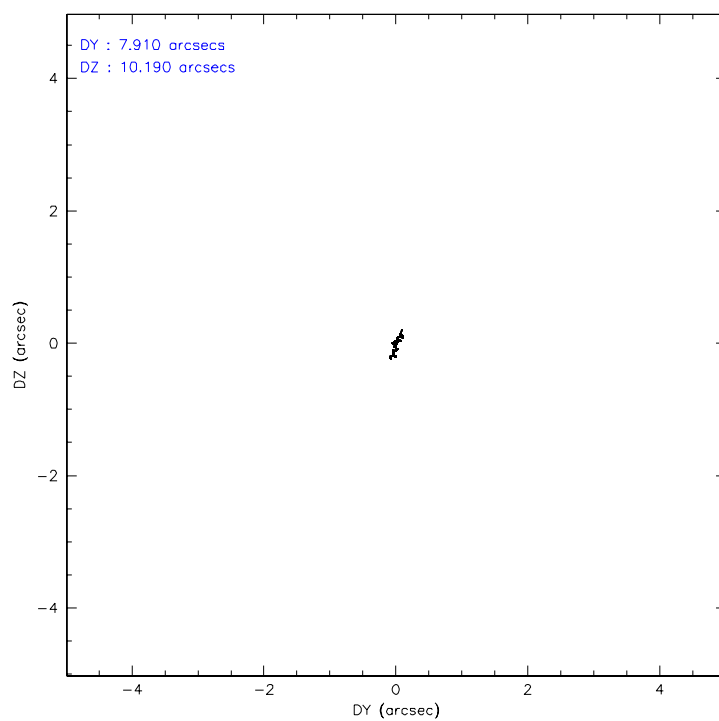
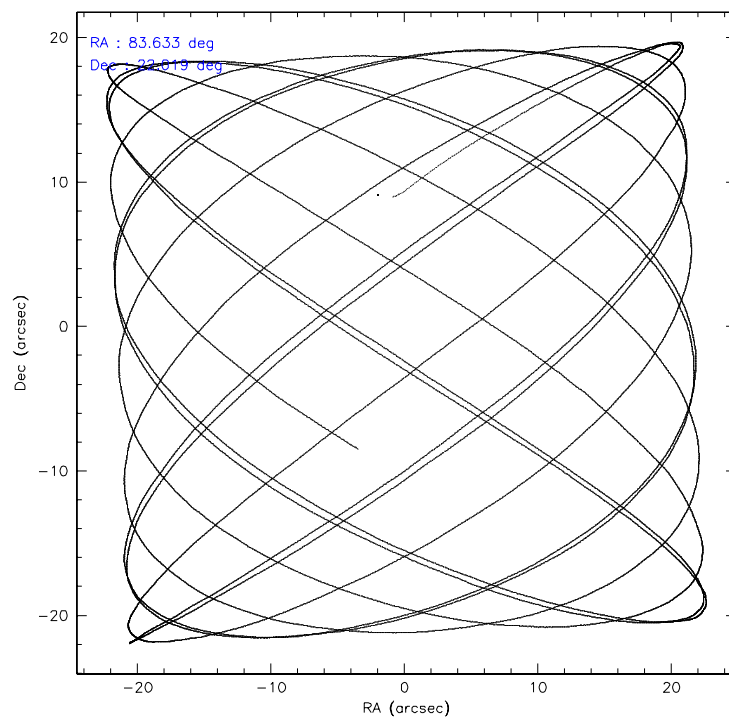
Level 1 Events

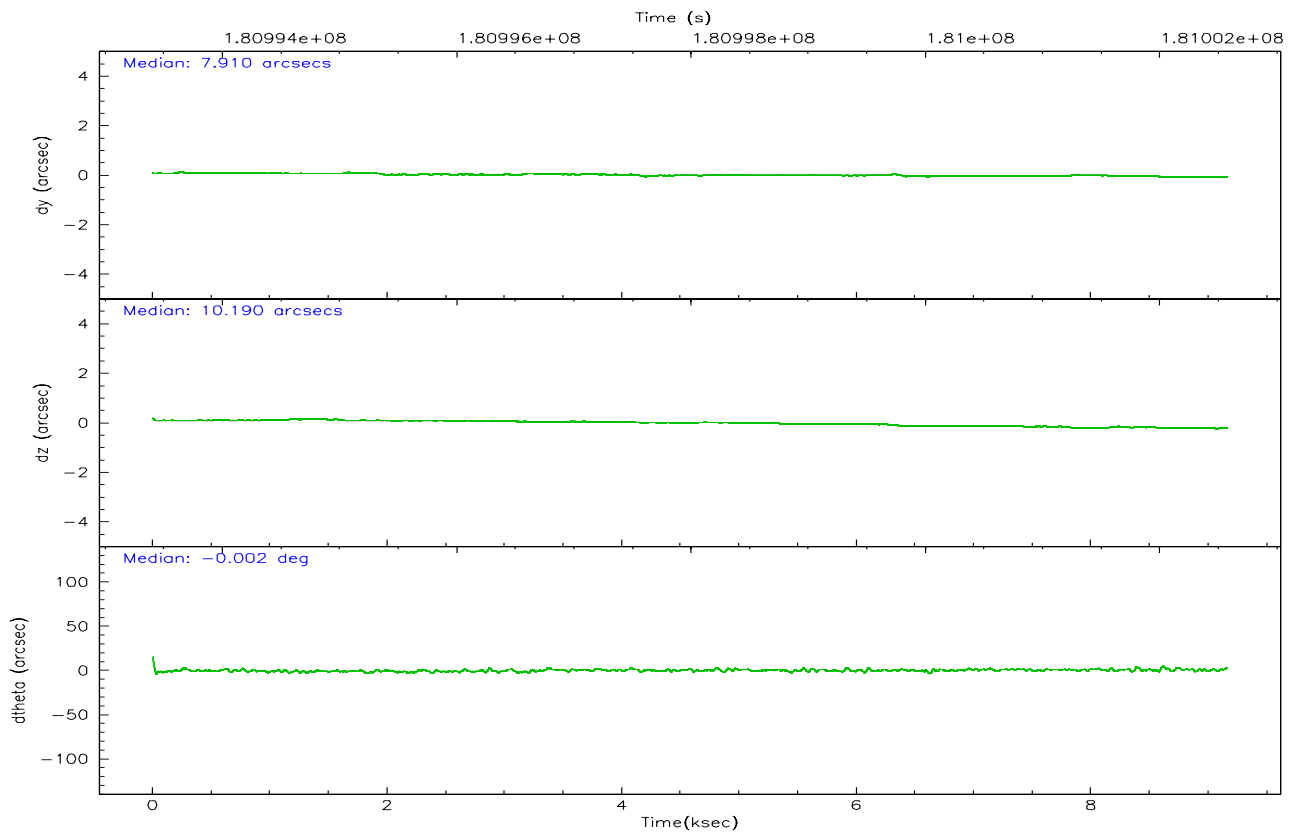
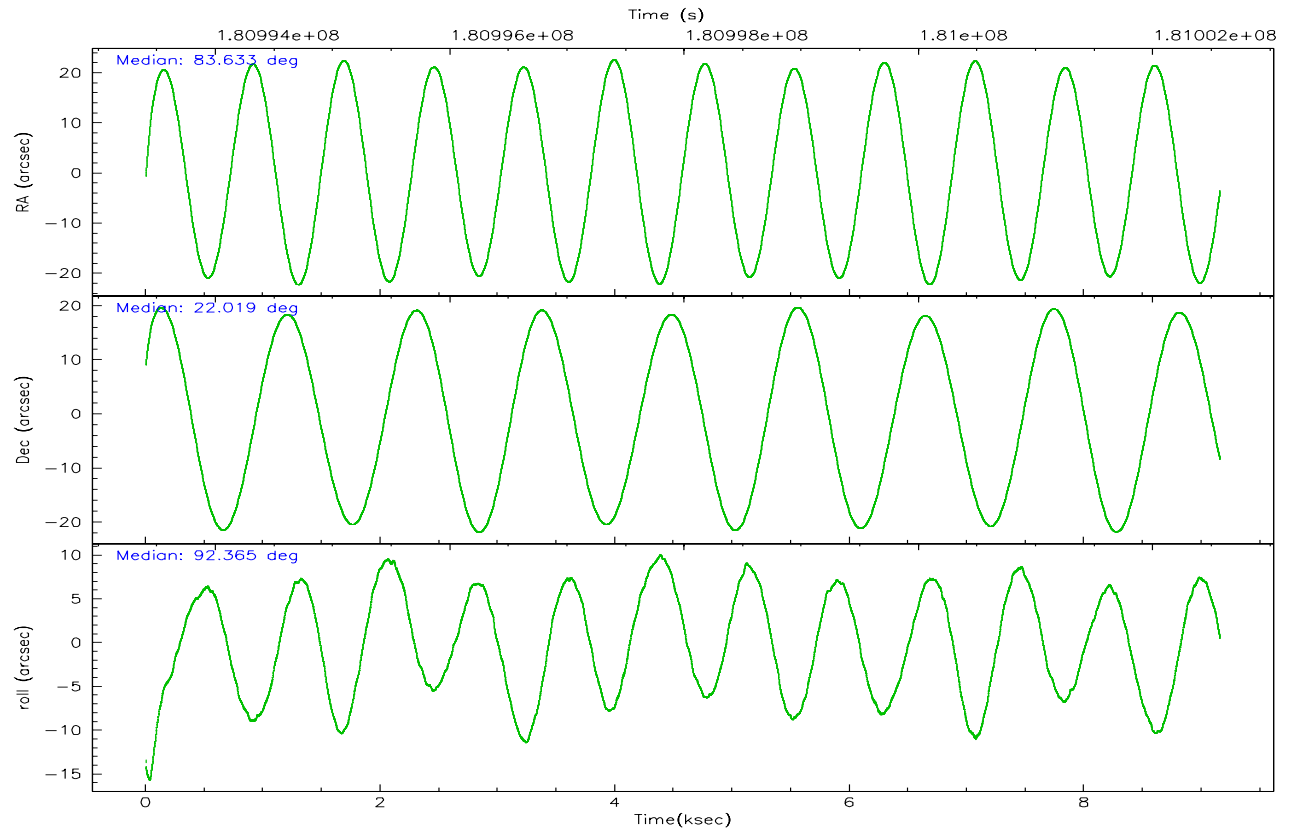
	segment 1	segment 2	segment 3
level 1 events	379	1640581	8
rejected events	359	103254	8
rejected %	94%	6%	100%

2.2 Compared Parameters

Parameter	Planned	Actual	Parameter	Planned	Actual
Instrument	HRC	HRC	Obspar format version number	6	6
Detector	HRC-S	HRC-S	Obspar file type	PREDICTED	ACTUAL
Grating	LETG	LETG	Obspar update status	NONE	UPDATED
Data mode	OBSERVING	OBSERVING			
Observation mode	POINTING	POINTING			
Pointing RA	83.651052	83.63322806723356			
Pointing Dec	21.995758	22.01926402386104			
Pointing Roll	92.296606	92.37060904583117			
SIM focus pos (mm)	-1.429586	-1.428180813131781			
SIM defocus (mm)	0.1037507710433287	0.1051558262725154			
SIM translation stage pos (mm)	250.455976	250.4635187648994			
SIM translation stage offset (mm)	0	-0.007540371344731511			
Observation start time	180993573.184000	180992682.80114			
Observation start date	2003-09-26T19:58:29	2003-09-26T19:44:42			
Observation end time	181002573.184000	181003616.98911			
Observation end date	2003-09-26T22:28:29	2003-09-26T22:46:56			

2.3 Aspect



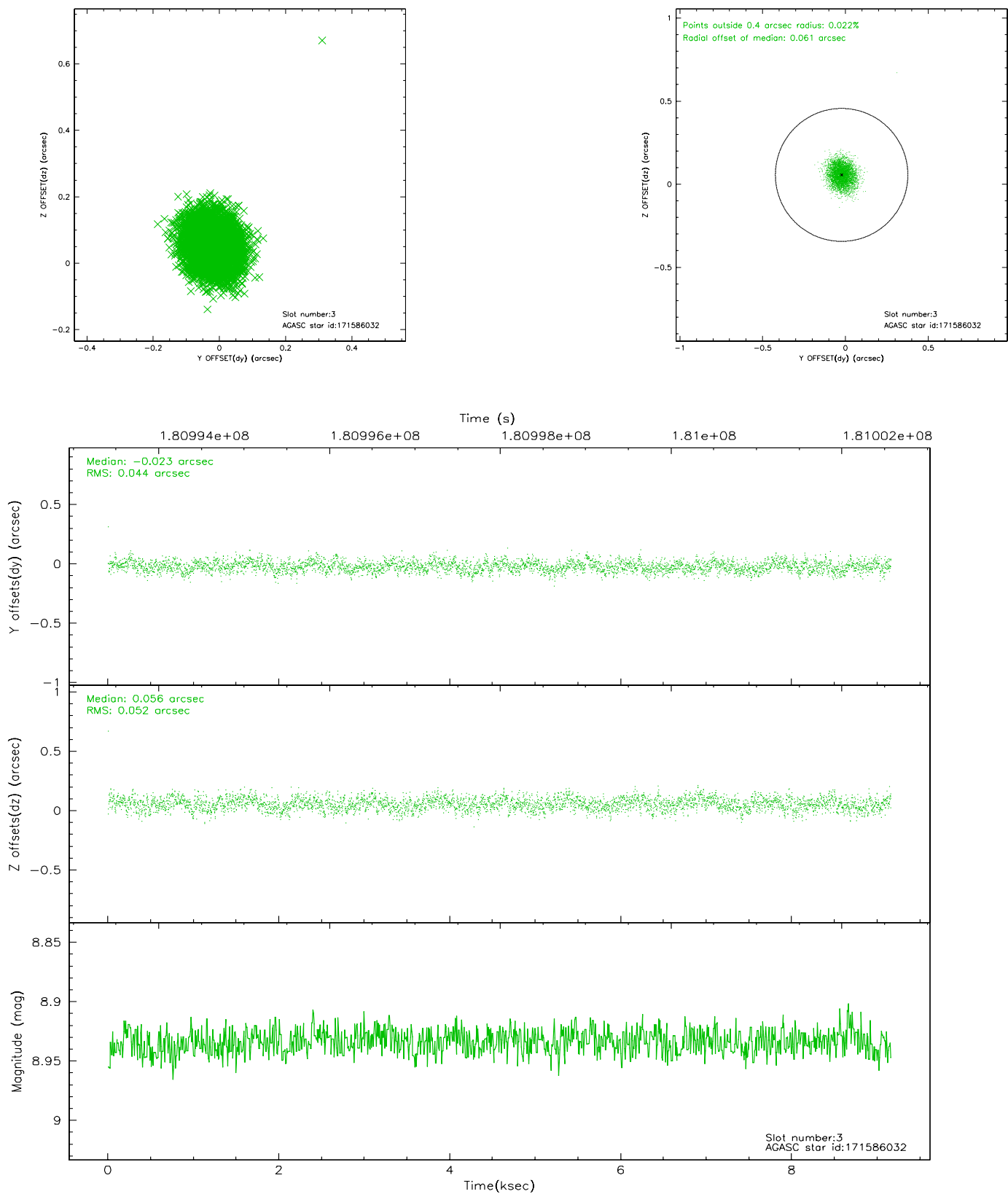


Slot Statistics

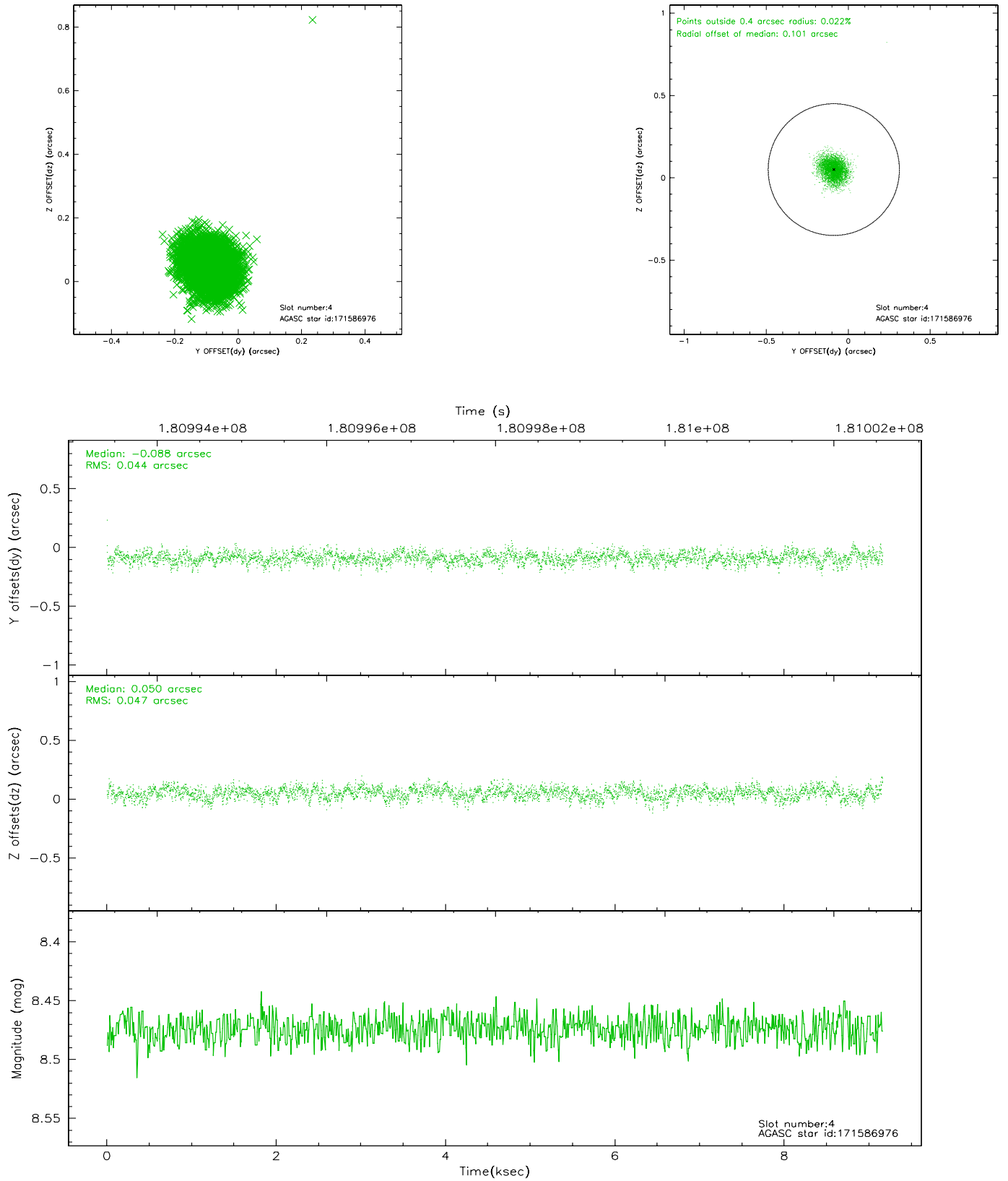
slot	status	id	mag	n_pts	med_dy	med_dz	dr1	dr2	ra	dec	mean_y	mean_z
0	UNUSED		0.00	0	0.000	0.000	0.000	0.000	0.000000	0.000000	0.00	0.00
1	FID	HRC-S-3	7.02	2234	0.086	-0.096	0.004	0.008	0.000000	0.000000	-1164.84	570.82
2	FID	HRC-S-4	6.98	2234	0.178	-0.097	0.004	0.008	0.000000	0.000000	1235.71	573.56
3	GUIDE	171586032	8.93	4468	-0.023	0.056	0.072	0.114	83.950197	22.083225	275.42	-1009.59
4	GUIDE	171586976	8.47	4468	-0.088	0.050	0.068	0.109	83.857953	22.438065	1563.58	-751.77
5	GUIDE	171597832	9.16	4468	0.321	-0.248	0.086	0.139	83.183230	21.366702	-2197.37	1657.37
6	GUIDE	171721904	9.20	4466	-0.046	0.089	0.105	0.167	84.272676	22.116922	356.37	-2088.56
7	GUIDE	243941560	8.30	4468	-0.165	0.051	0.061	0.100	83.733264	22.568598	2049.30	-355.80

2.4 Star Slots

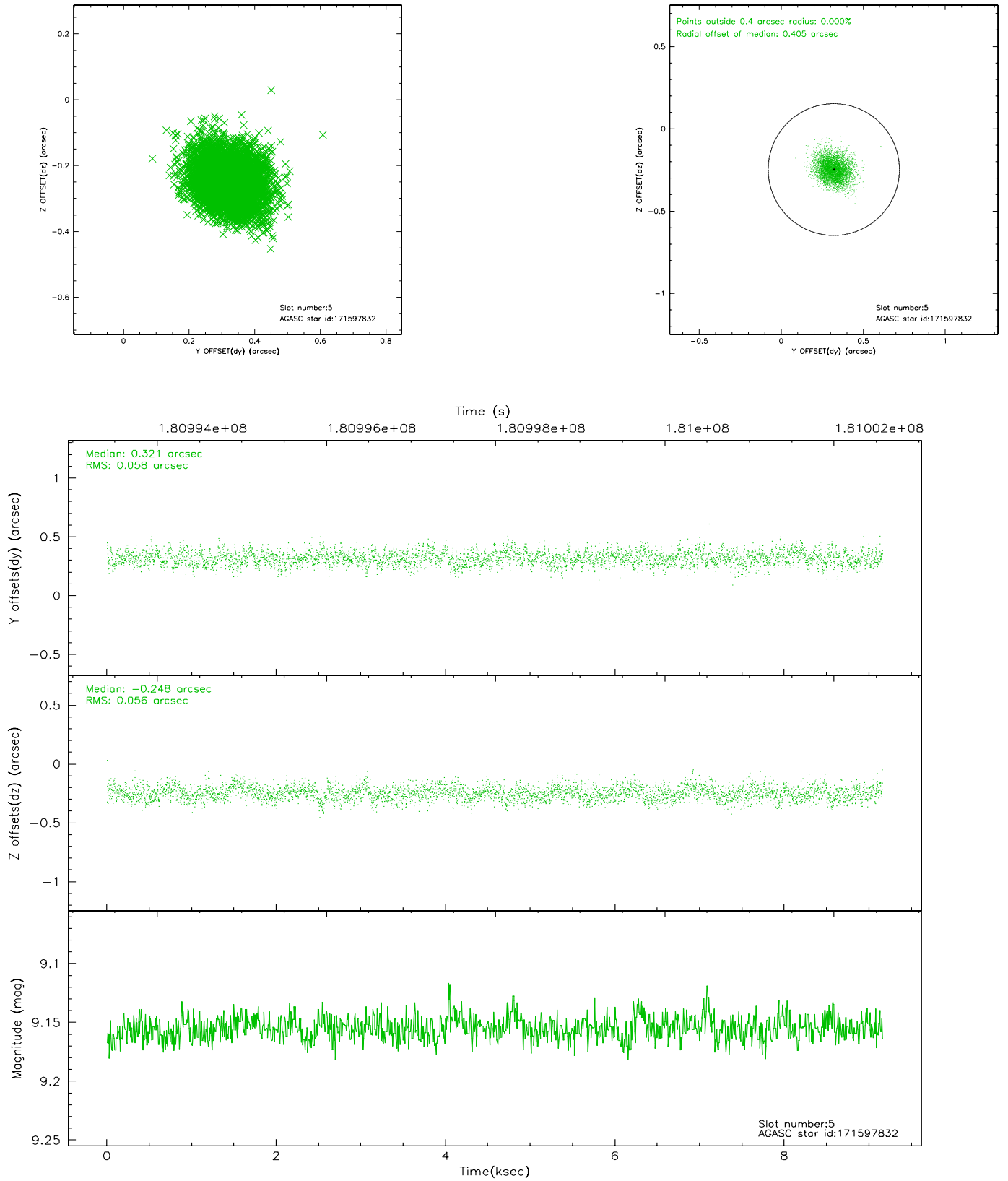
2.4.1 Slot 3



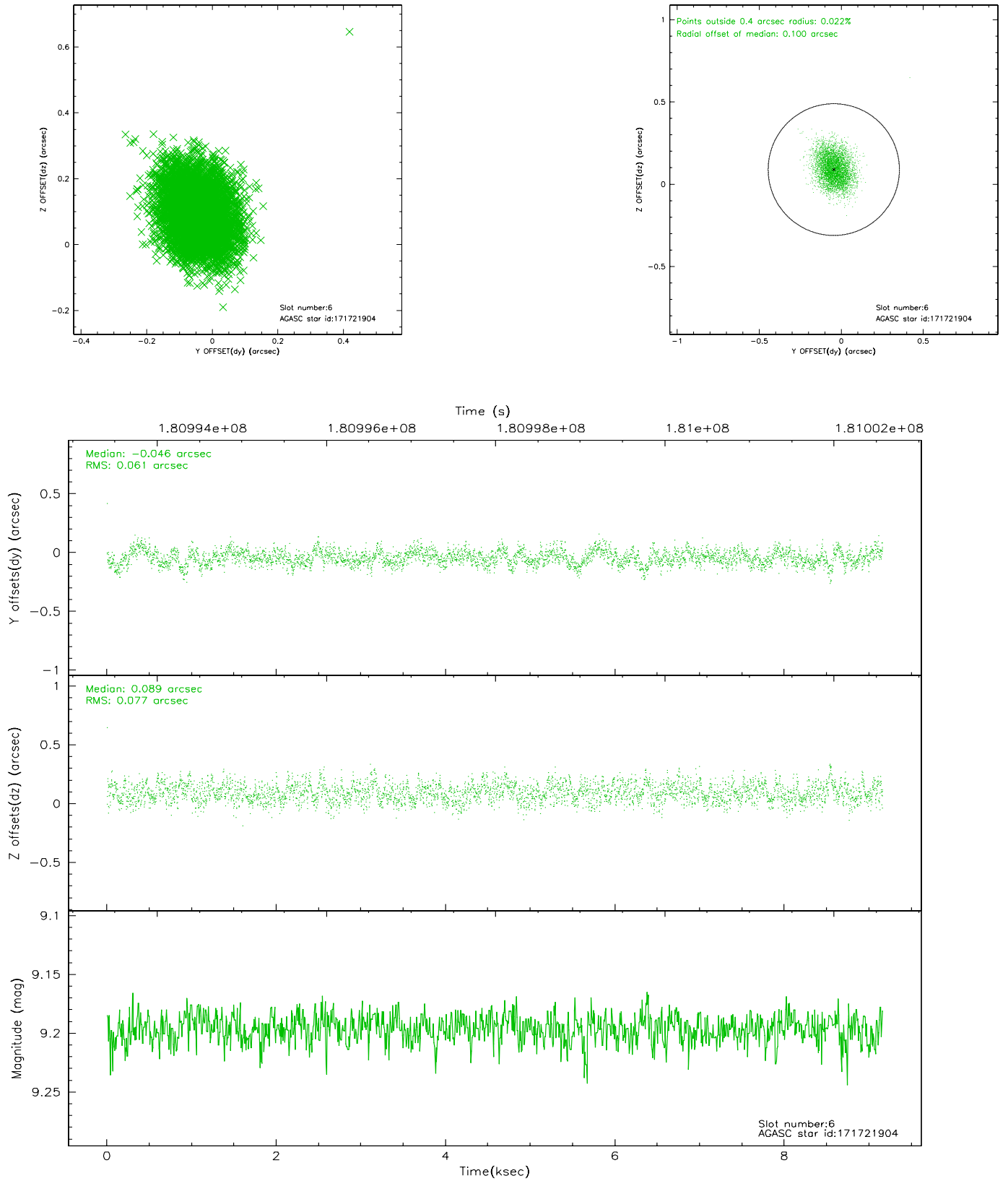
2.4.2 Slot 4



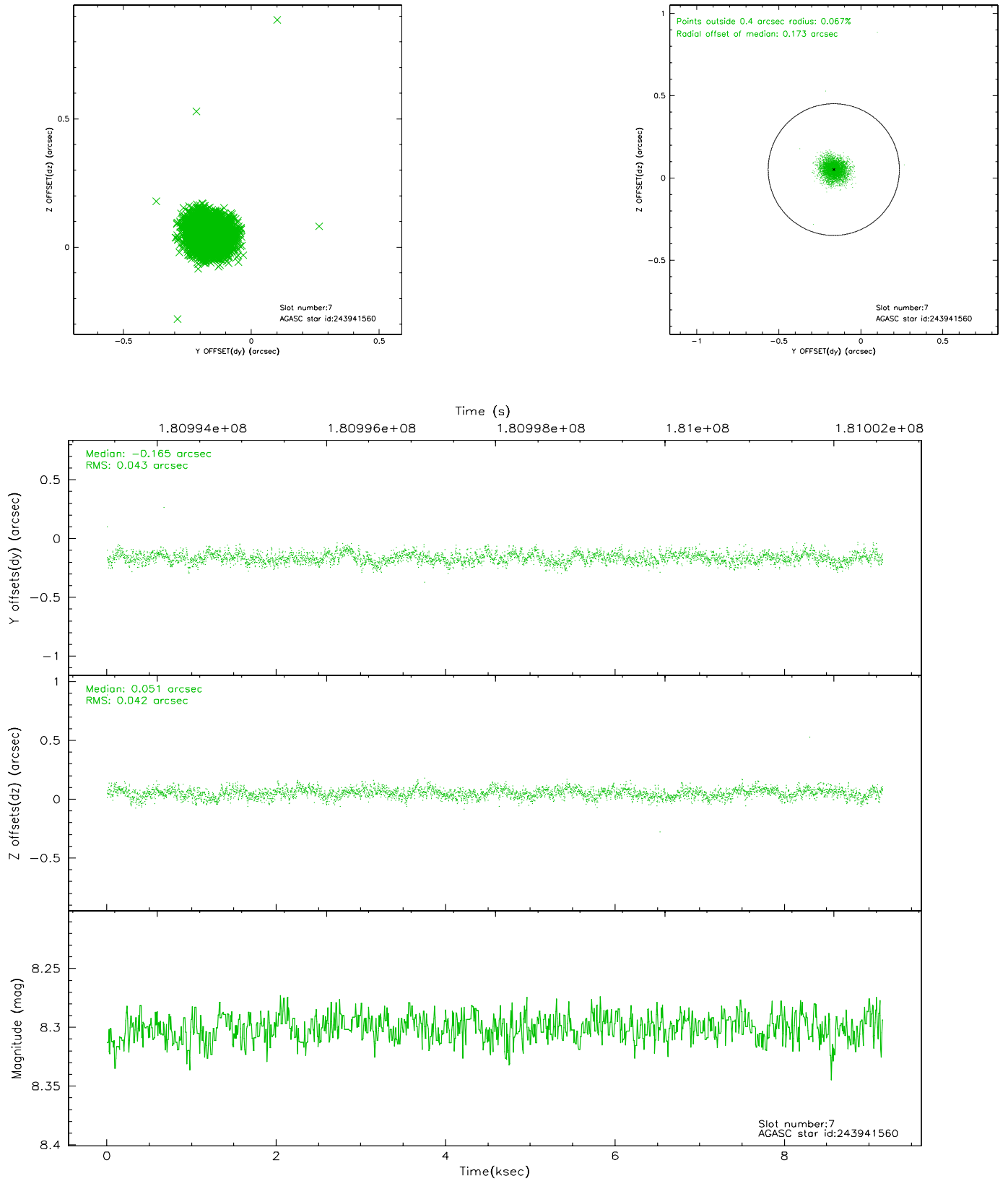
2.4.3 Slot 5



2.4.4 Slot 6

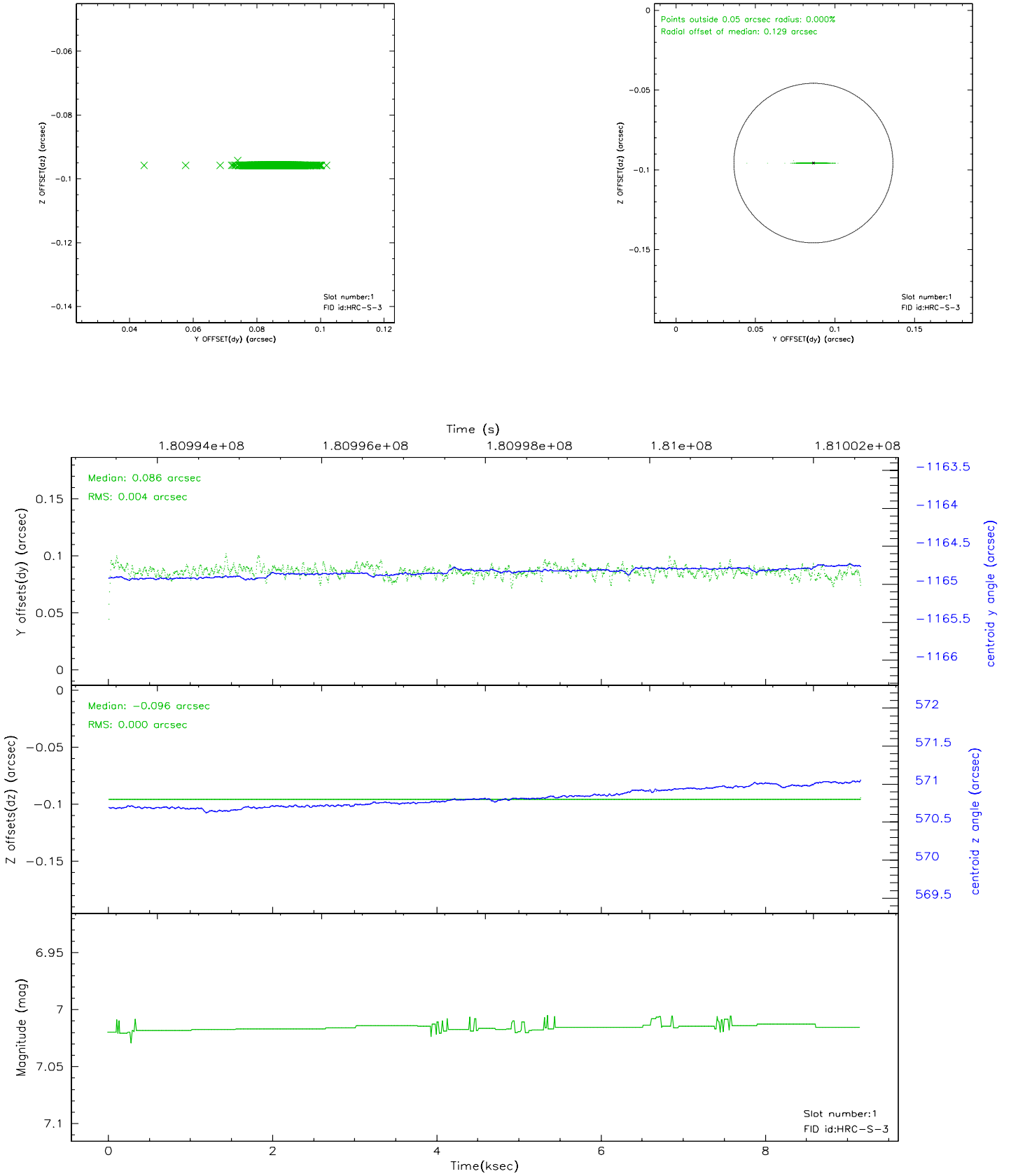


2.4.5 Slot 7

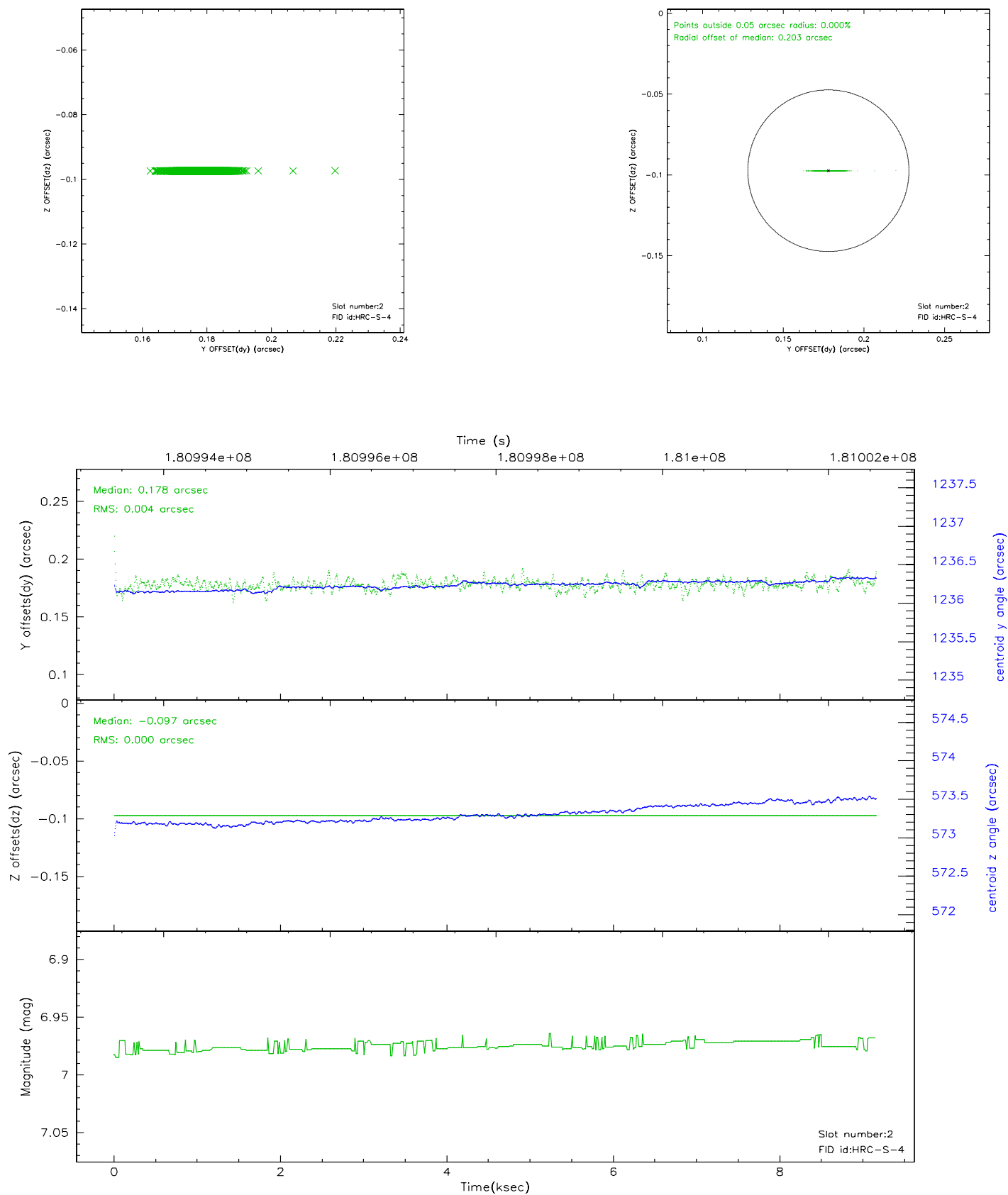


2.5 FID Slots

2.5.1 Slot 1

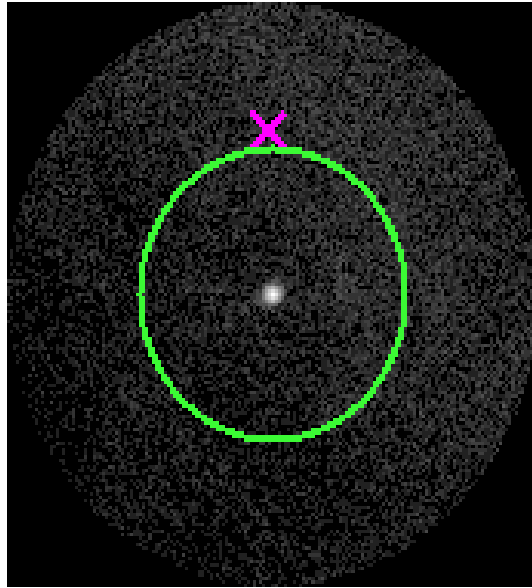


2.5.2 Slot 2



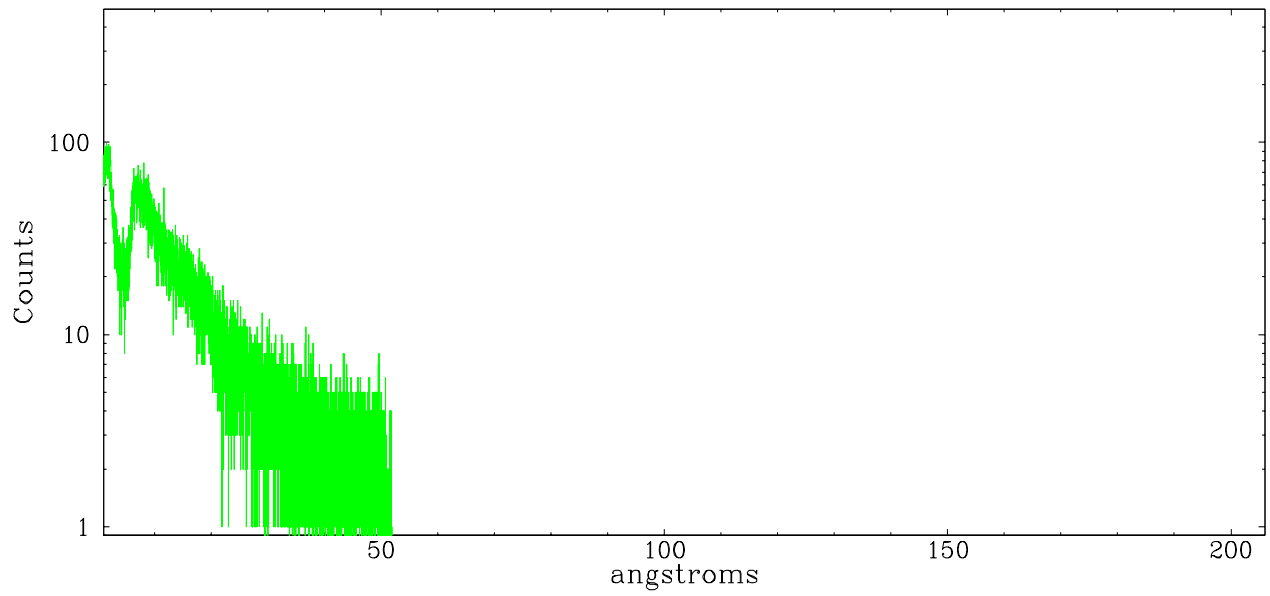
3 Gratings

3.1 LETG Arm

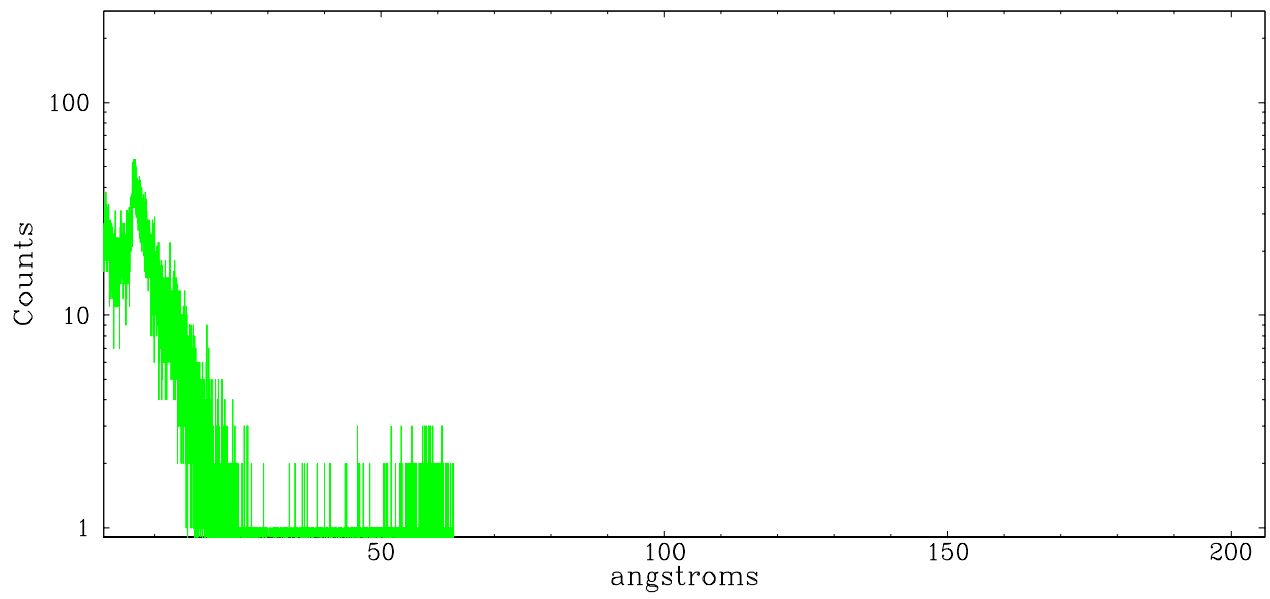


LETG Zero Order

leg order -1



leg order +1



A Summary

A.1 Status

V&V Scientist	Beth Sundheim
V&V Date (YYYY-MM-DD)	2006.07.03
V&V Edition	1
V&V Disposition and Status	OK
V&V Charge Time	8.828

A.2 Comments