

V&V Reference Report

L2 ASCDS Version : 7.6.9

Observation 3829 - L2 Version 001
Chandra X-Ray Center

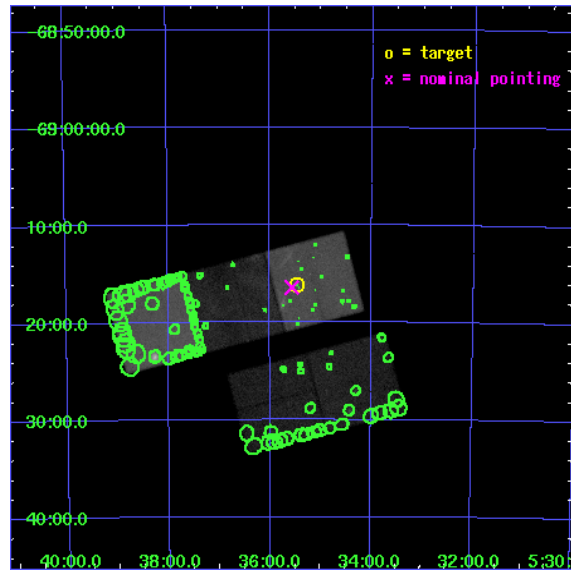
L2 Processing Date : Oct 16 2006

Contents

1	Front	2
2	OBI	3
2.1	OBI	3
2.1.1	Images	3
2.1.2	Bias	3
2.1.3	Parameters	4
2.1.4	Events	4
2.2	Compared Parameters	5
2.3	Aspect	6
2.4	Star Slots	9
2.4.1	Slot 3	9
2.4.2	Slot 4	10
2.4.3	Slot 5	11
2.4.4	Slot 6	12
2.4.5	Slot 7	13
2.5	FID Slots	14
2.5.1	Slot 0	14
2.5.2	Slot 1	15
2.5.3	Slot 2	16
3	Point Sources	17
A	Summary	18
A.1	Status	18
A.2	Comments	18

1 Front

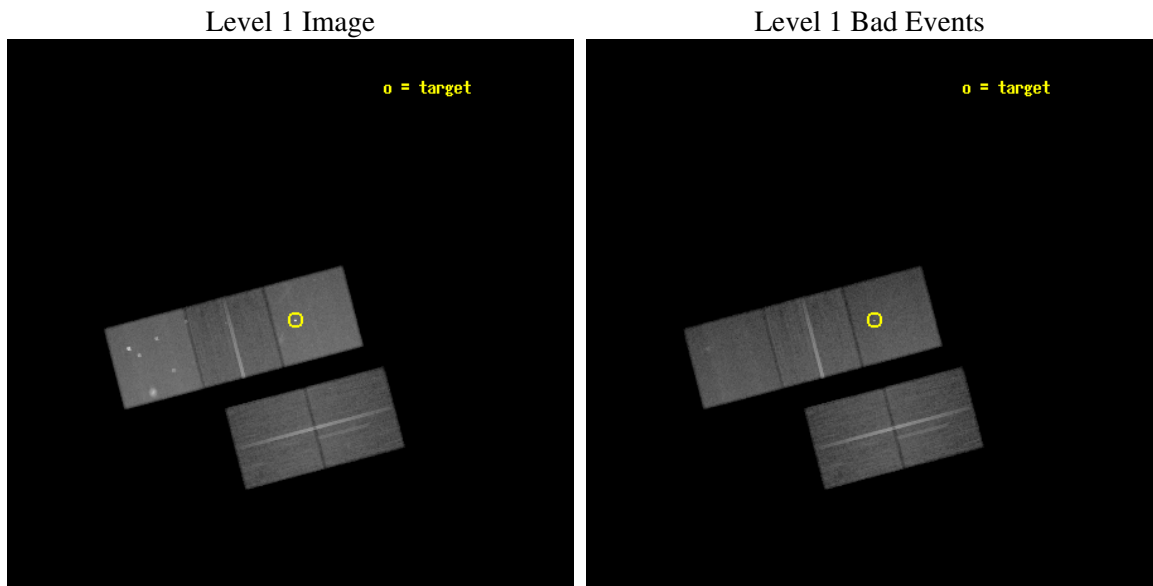
seq_num	500308
obs_id	3829
title	MONITORING THE BIRTH OF SUPERNOVA REMNANT SNR1987A
observer	Dr. David Burrows
object	SNR1987A
dtcycle	0
cycle	P
ra_targ	83.866667
dec_targ	-69.26975
ra_nom	83.891435297927
dec_nom	-69.273800679159
roll_nom	345.31757203126
revision	2
ontime	49658.858934283
livetime	49010.029383987
ontime2	49652.57701382
ontime3	49655.717974067
ontime5	49658.858934283
ontime6	49661.999904513
ontime7	49658.858934283
l2events	547234



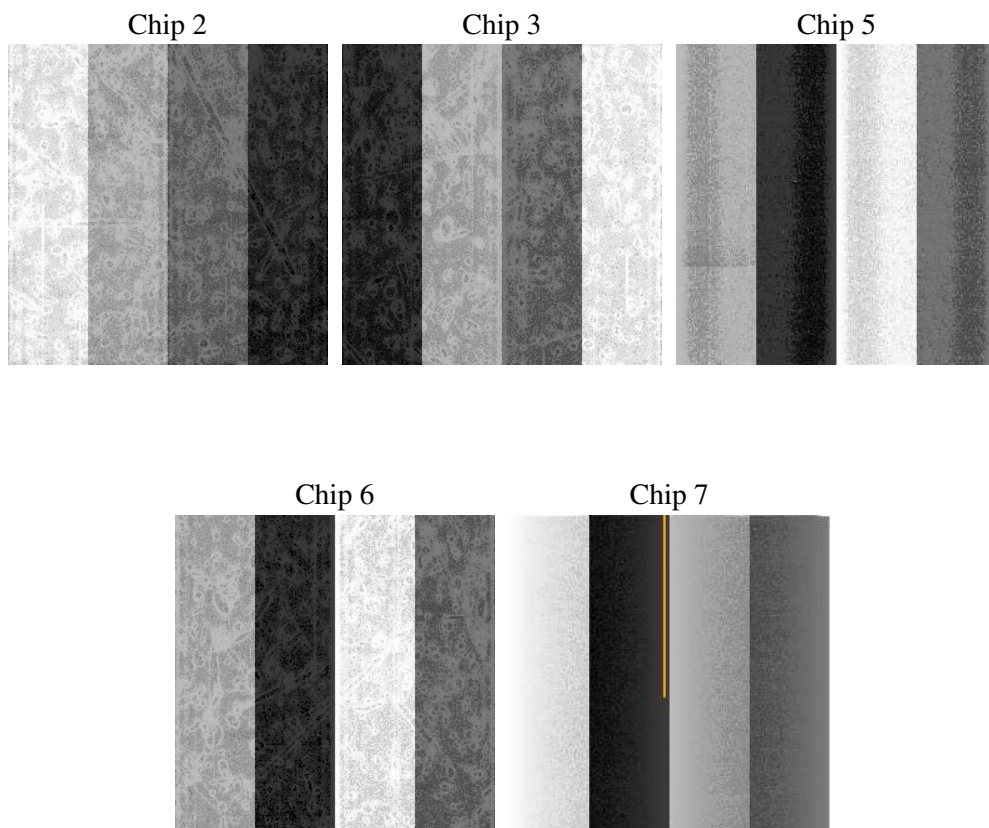
2 OBI

2.1 OBI

2.1.1 Images



2.1.2 Bias



2.1.3 Parameters

obi_num	2
ascdsver	7.6.9
caldbver	3.2.3
date	2006-10-16T07:04:41
revision	2

sched_exp_time	49500.000000
ontime	49784.878860563
ontime2	49778.5969401
ontime3	49781.737920284
ontime5	49784.878880501
ontime6	49788.019830793
ontime7	49784.878860563
l1events	1943926

2.1.4 Events

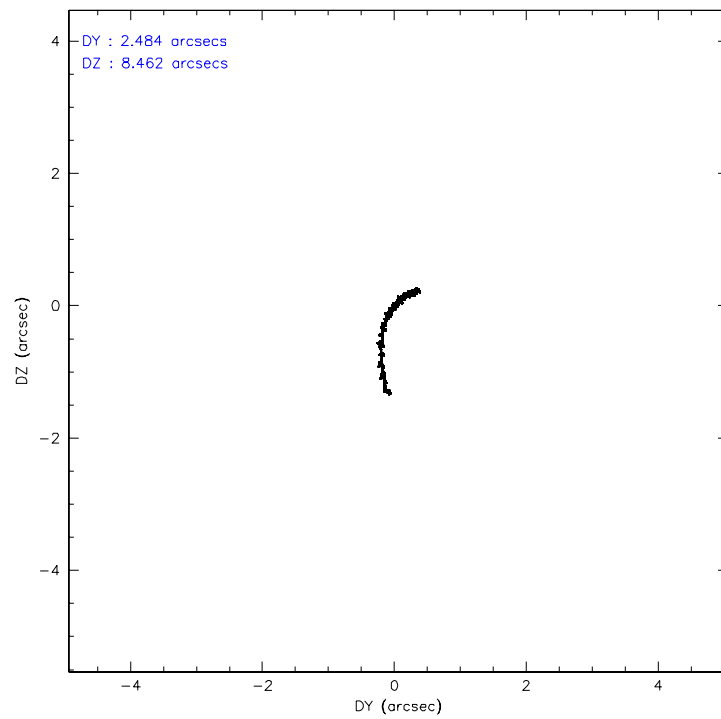
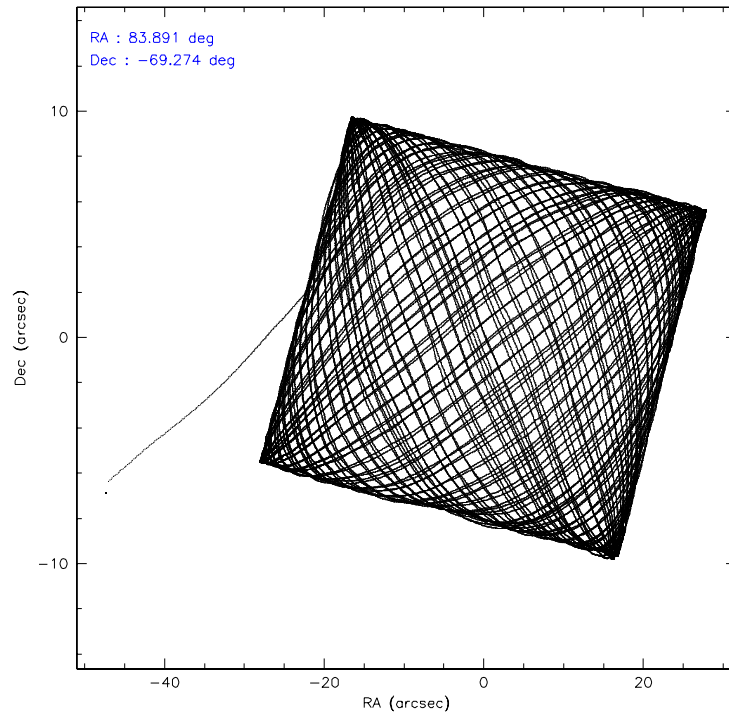
	ccd 2	ccd 3	ccd 5	ccd 6	ccd 7
level 1 events	319675	314364	504905	343362	461620
rejected events	275500	270358	259471	288179	263765
rejected %	86%	86%	51%	83%	57%

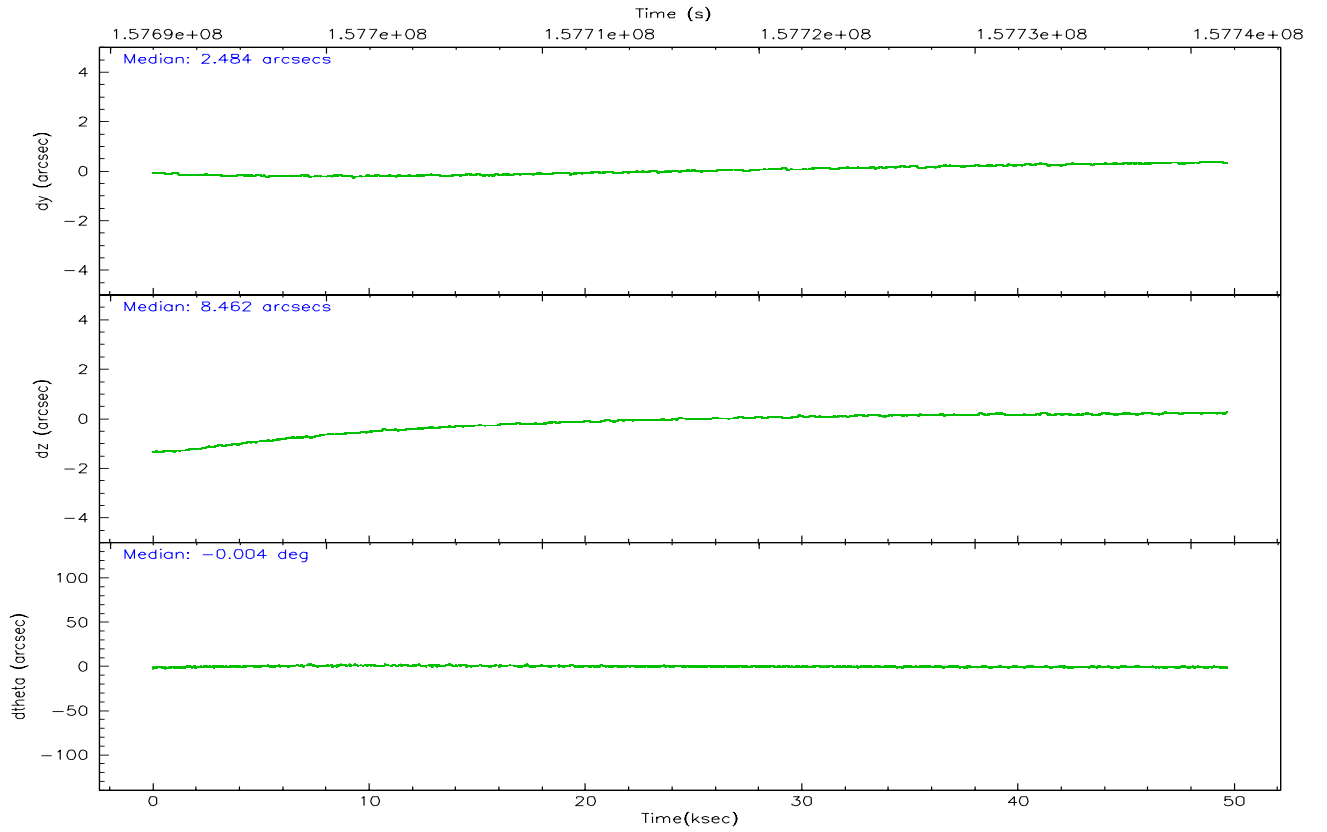
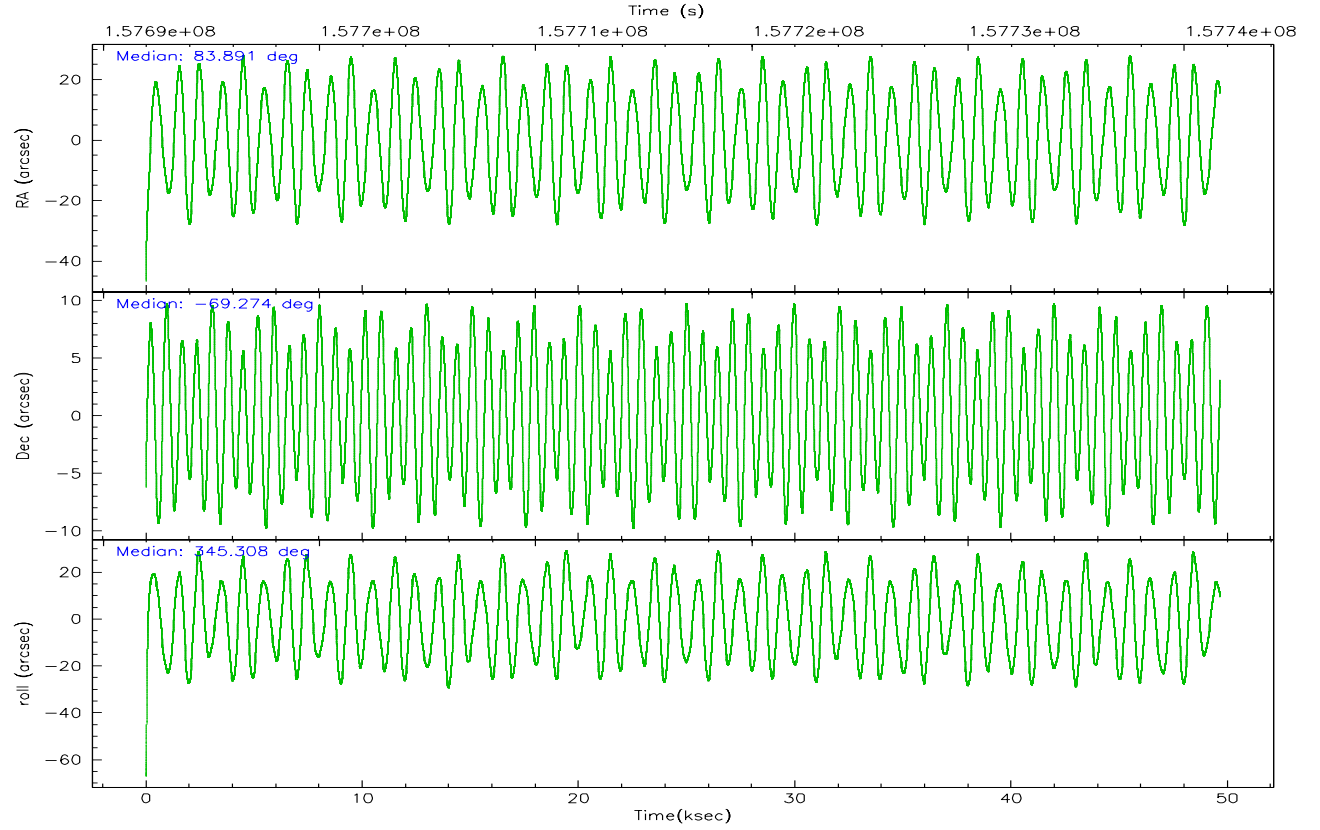
	ccd 2	ccd 3	ccd 5	ccd 6	ccd 7
grade 0 events	22887	22602	33465	30548	20346
	7%	7%	6%	8%	4%
grade 1 events	204	201	729	179	392
	0%	0%	0%	0%	0%
grade 2 events	7778	7469	77255	8986	49699
	2%	2%	15%	2%	10%
grade 3 events	3805	3778	7364	4091	12682
	1%	1%	1%	1%	2%
grade 4 events	3808	3860	7201	4000	12338
	1%	1%	1%	1%	2%
grade 5 events	11724	13633	22899	14470	29075
	3%	4%	4%	4%	6%
grade 6 events	6082	6475	120882	7780	103428
	1%	2%	23%	2%	22%
grade 7 events	263387	256346	235110	273308	233660
	82%	81%	46%	79%	50%

2.2 Compared Parameters

Parameter	Planned	Actual	Parameter	Planned	Actual
Instrument	ACIS	ACIS	Obspar format version number	6	6
Detector	ACIS-23567	ACIS-23567	Obspar file type	PREDICTED	ACTUAL
Grating	NONE	NONE	Obspar update status	NONE	UPDATED
Data mode	FAINT	FAINT	Number of optional ACIS chips dropped	0	0
Observation mode	POINTING	POINTING	On-chip summing requested	N	N
Pointing RA	83.817520	83.89143529792661	Subarray requested	NONE	NONE
Pointing Dec	-69.281330	-69.27380067915928	Alternating exposures requested	N	N
Pointing Roll	345.091814	345.3175720312612	Primary exposure time	0.000000	3.1
SIM focus pos (mm)	-0.684267	-0.6828225247311905			
SIM defocus (mm)	0	0.001444936568705701			
SIM translation stage pos (mm)	-190.132523	-190.1400660498719			
SIM translation stage offset (mm)	0	0.00754346686406393			
Observation start time	157692158.184000	157691107.73914			
Observation start date	2002-12-31T03:21:34	2002-12-31T03:05:07			
Observation end time	157741658.184000	157742257.29128			
Observation end date	2002-12-31T17:06:34	2002-12-31T17:17:37			
Read mode	TIMED	TIMED			

2.3 Aspect



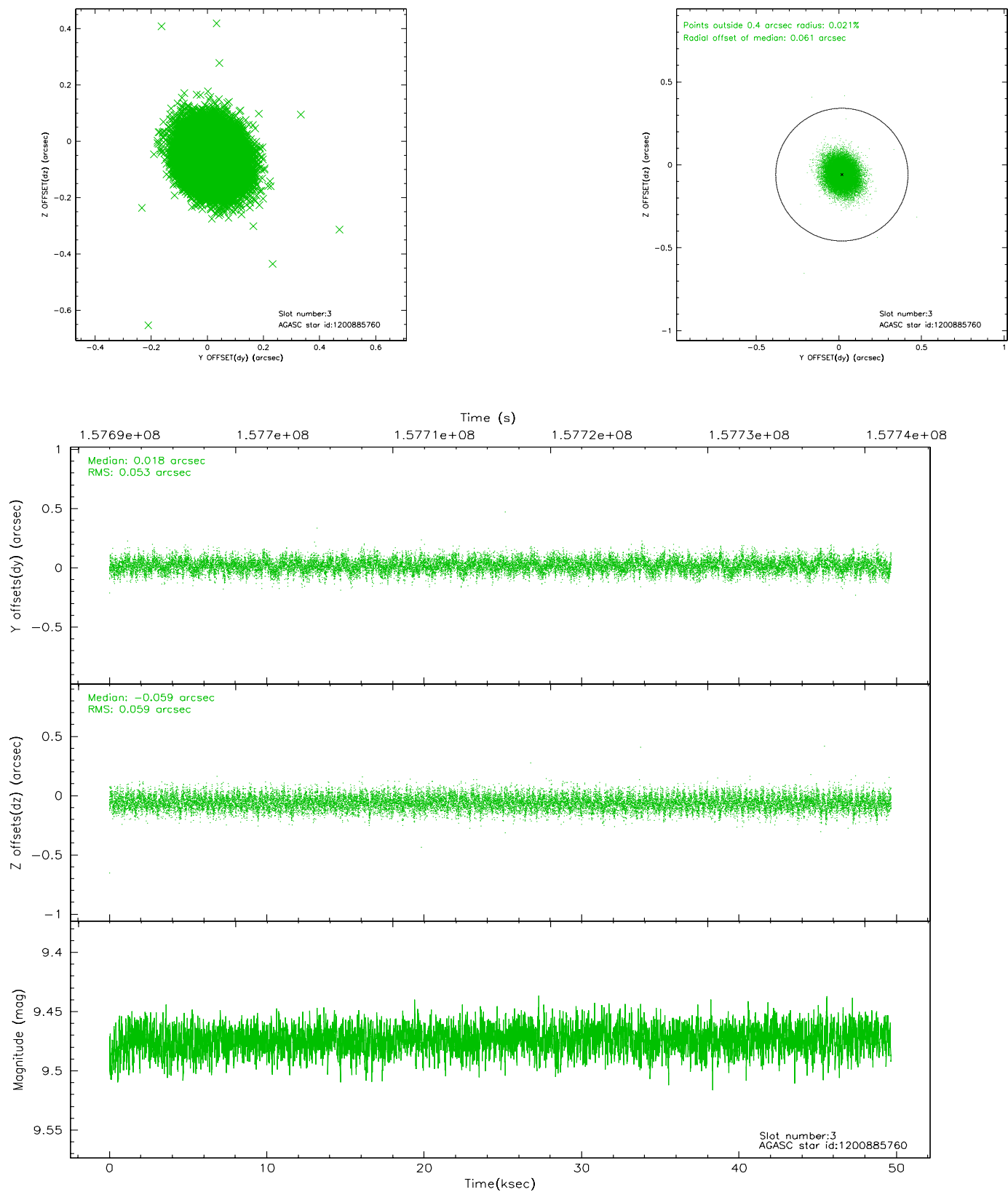


Slot Statistics

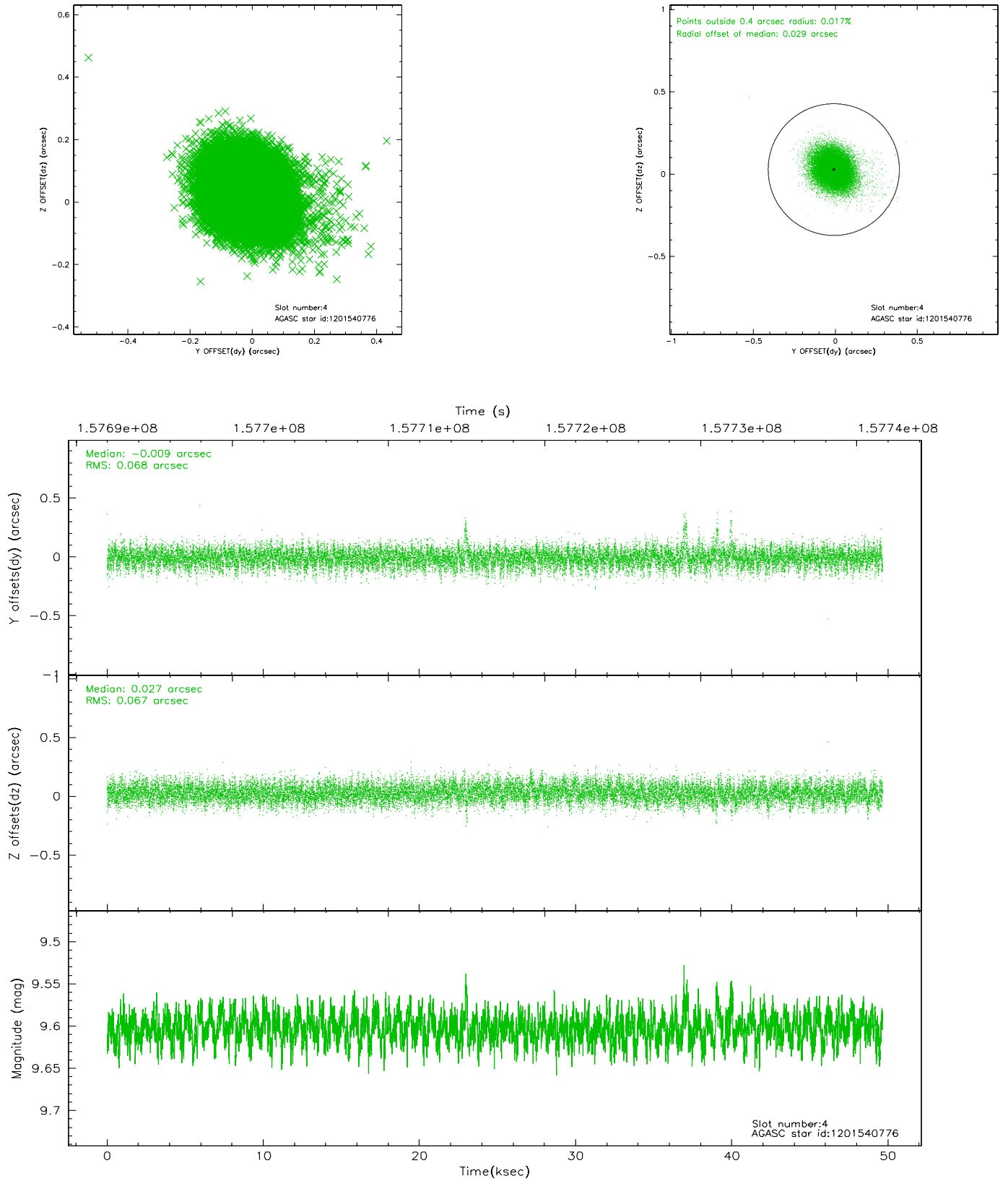
slot	status	id	mag	n_pts	med_dy	med_dz	dr1	dr2	ra	dec	mean_y	mean_z
0	FID	ACIS-S-2	7.11	12113	-0.010	0.015	0.008	0.013	0.000000	0.000000	-755.17	-1729.47
1	FID	ACIS-S-4	7.20	12112	-0.049	0.001	0.009	0.016	0.000000	0.000000	2158.09	179.01
2	FID	ACIS-S-5	7.24	12113	0.027	-0.007	0.009	0.016	0.000000	0.000000	-1807.98	172.67
3	GUIDE	1200885760	9.47	24212	0.018	-0.059	0.084	0.137	83.723637	-68.777667	-584.64	1720.71
4	GUIDE	1201540776	9.60	24095	-0.009	0.027	0.099	0.164	85.107945	-69.858480	2085.20	-1611.84
5	GUIDE	1200884224	10.02	24200	0.033	-0.151	0.153	0.261	83.314443	-68.577335	-1290.57	2276.17
6	GUIDE	1201410616	9.35	24218	0.017	0.124	0.109	0.176	82.516808	-69.784406	-1092.56	-2182.67
7	GUIDE	1201542944	9.94	24197	-0.067	0.060	0.114	0.185	84.538615	-70.001893	1527.26	-2282.87

2.4 Star Slots

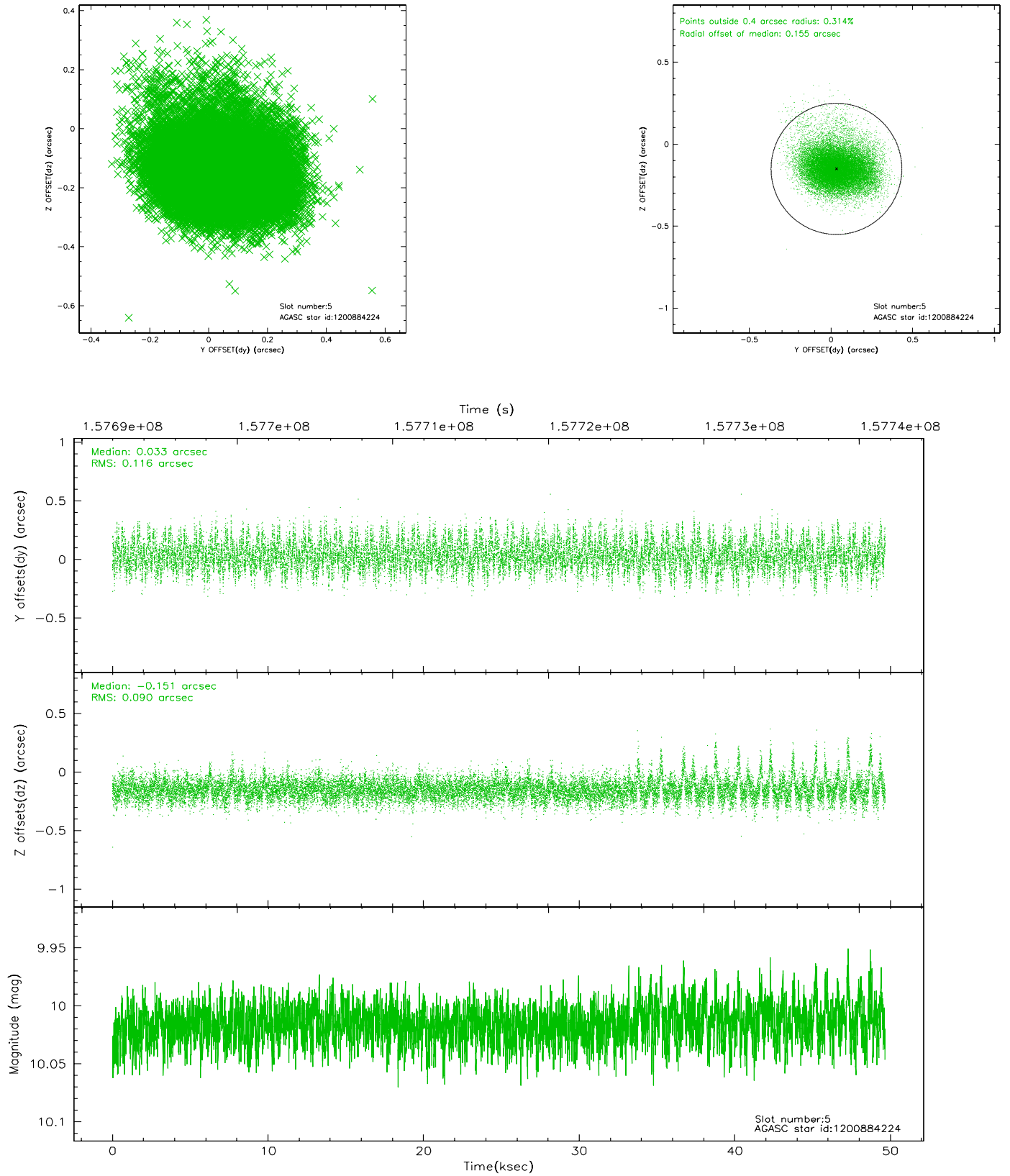
2.4.1 Slot 3



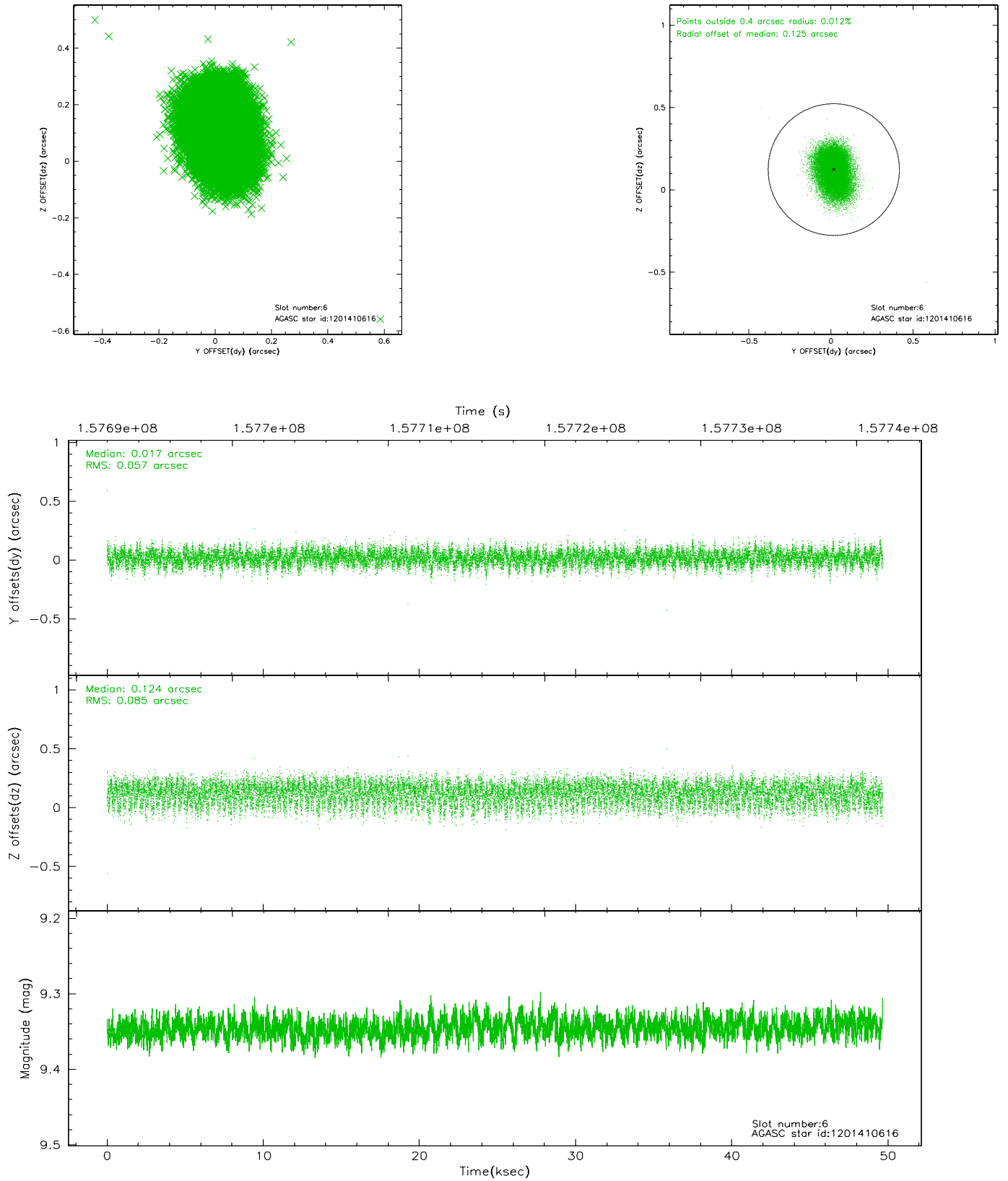
2.4.2 Slot 4



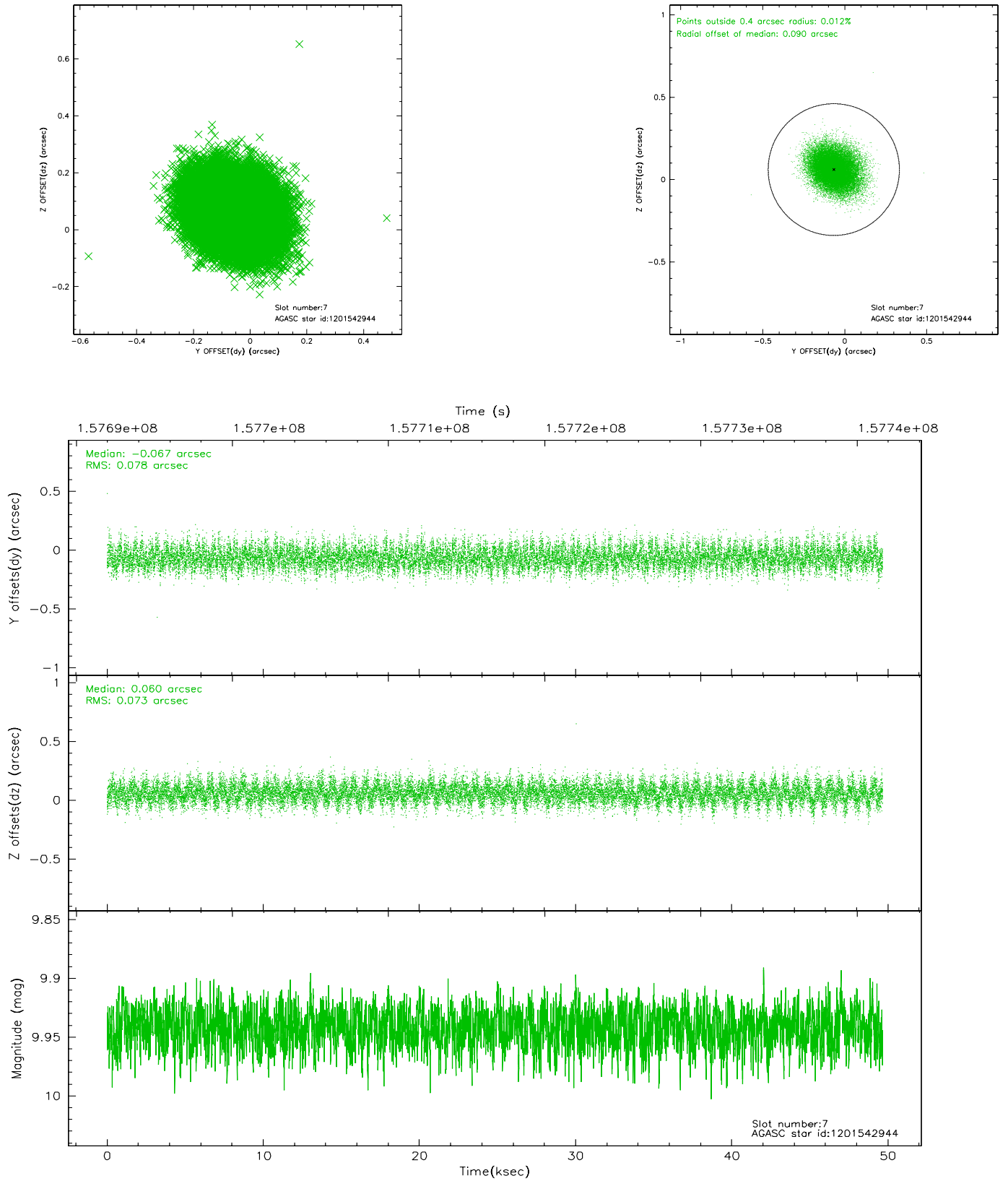
2.4.3 Slot 5



2.4.4 Slot 6

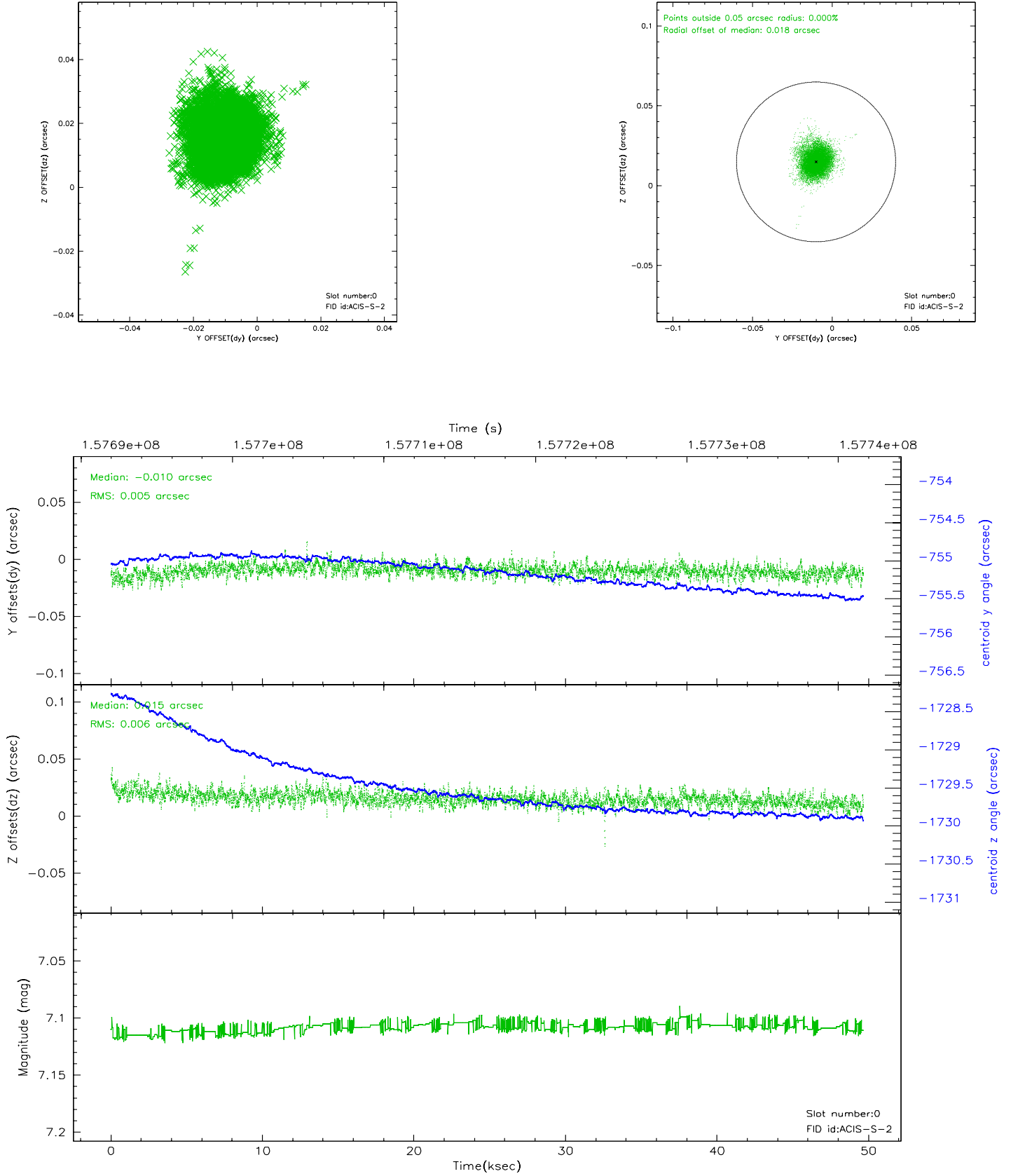


2.4.5 Slot 7

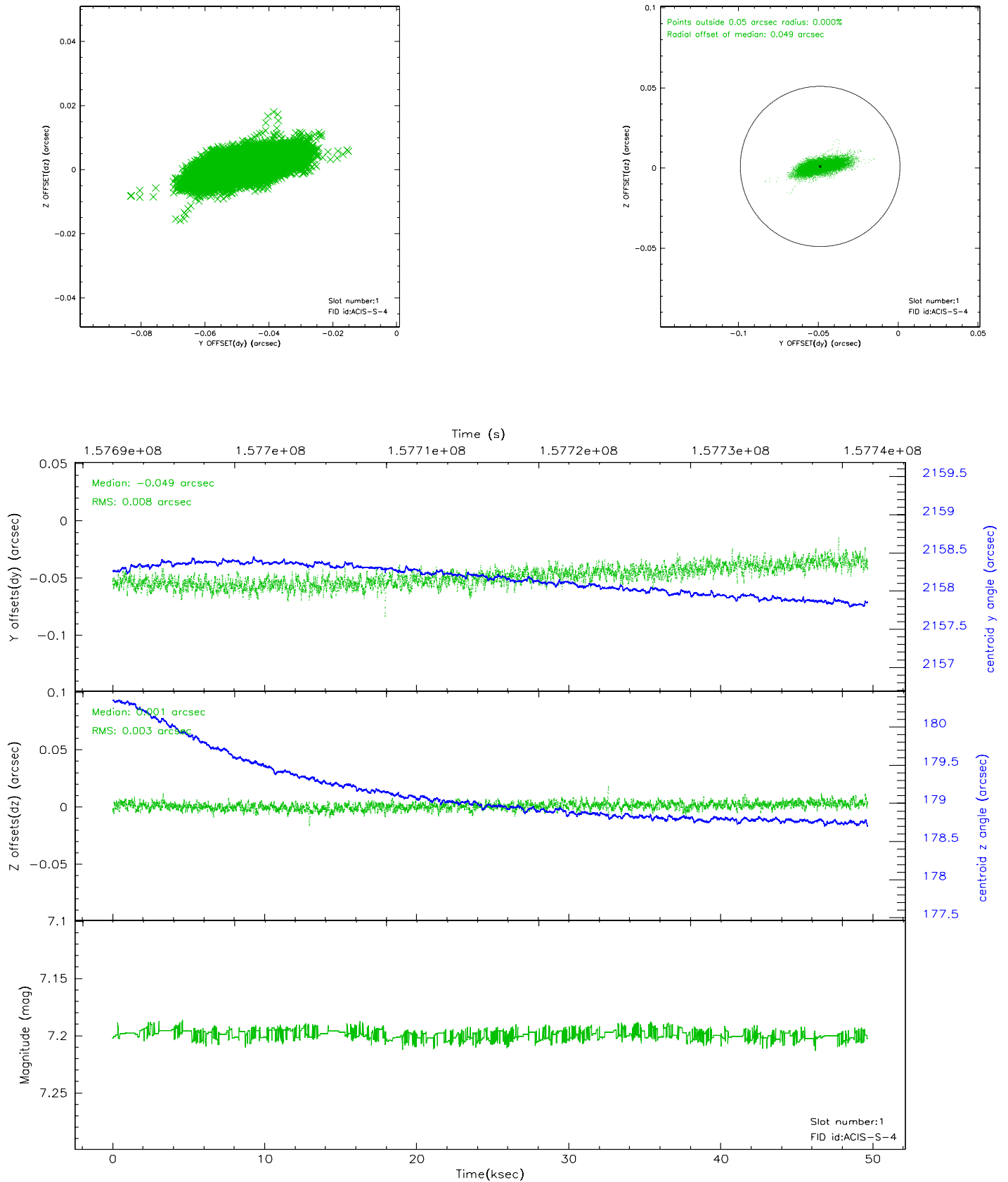


2.5 FID Slots

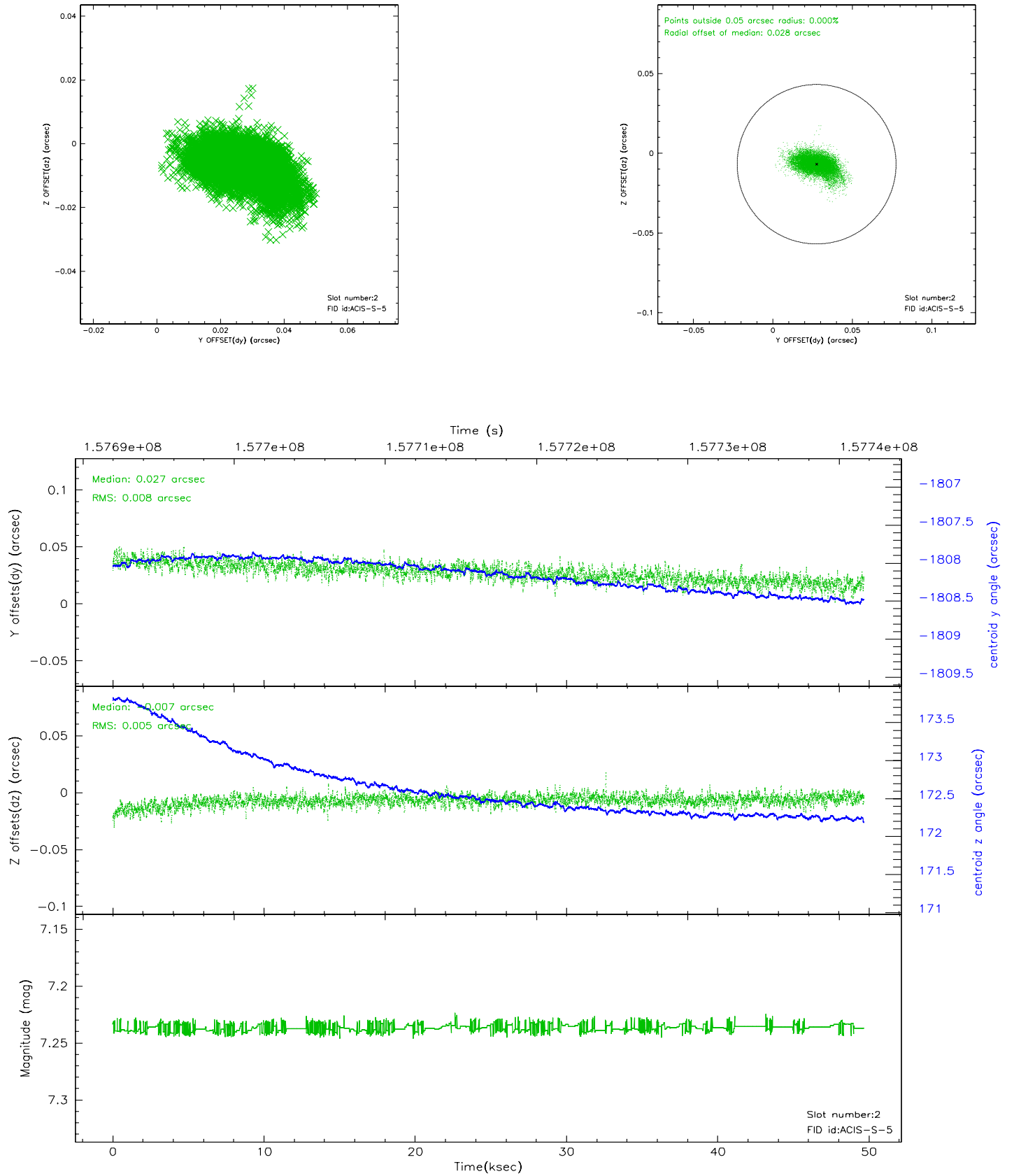
2.5.1 Slot 0



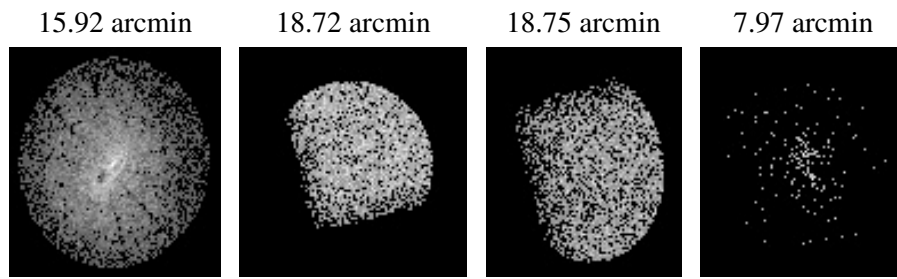
2.5.2 Slot 1



2.5.3 Slot 2



3 Point Sources



A Summary

A.1 Status

V&V Scientist	Jen Lauer
V&V Date (YYYY-MM-DD)	2006.10.16
V&V Edition	1
V&V Disposition and Status	OK
V&V Charge Time	49.658

A.2 Comments

Monitor constraint met.