

# V&V Reference Report

## L2 ASCDS Version : 7.6.8

Observation 3517 - L2 Version 001  
Chandra X-Ray Center

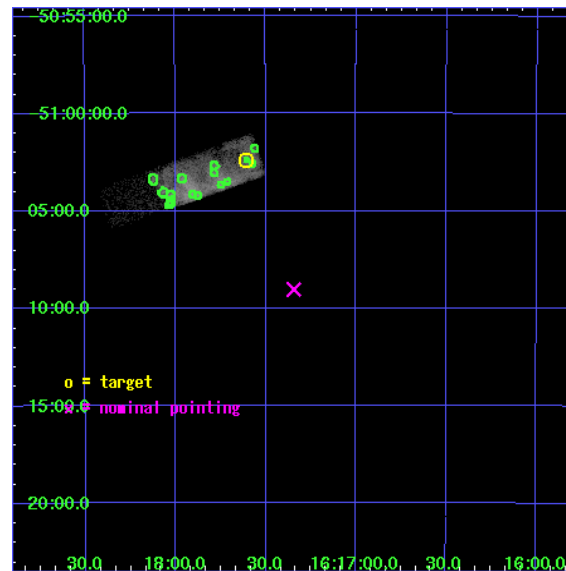
L2 Processing Date : Jul 4 2006

## Contents

<b>1</b>	<b>Front</b>	<b>2</b>
<b>2</b>	<b>OBI</b>	<b>3</b>
2.1	OBI . . . . .	3
2.1.1	Images . . . . .	3
2.1.2	Bias . . . . .	3
2.1.3	Parameters . . . . .	4
2.1.4	Events . . . . .	4
2.2	Compared Parameters . . . . .	5
2.3	Aspect . . . . .	6
2.4	Star Slots . . . . .	9
2.4.1	Slot 3 . . . . .	9
2.4.2	Slot 4 . . . . .	10
2.4.3	Slot 5 . . . . .	11
2.4.4	Slot 6 . . . . .	12
2.4.5	Slot 7 . . . . .	13
2.5	FID Slots . . . . .	14
2.5.1	Slot 0 . . . . .	14
2.5.2	Slot 1 . . . . .	15
2.5.3	Slot 2 . . . . .	16
<b>3</b>	<b>Point Sources</b>	<b>17</b>
<b>A</b>	<b>Summary</b>	<b>18</b>
A.1	Status . . . . .	18
A.2	Comments . . . . .	18

# 1 Front

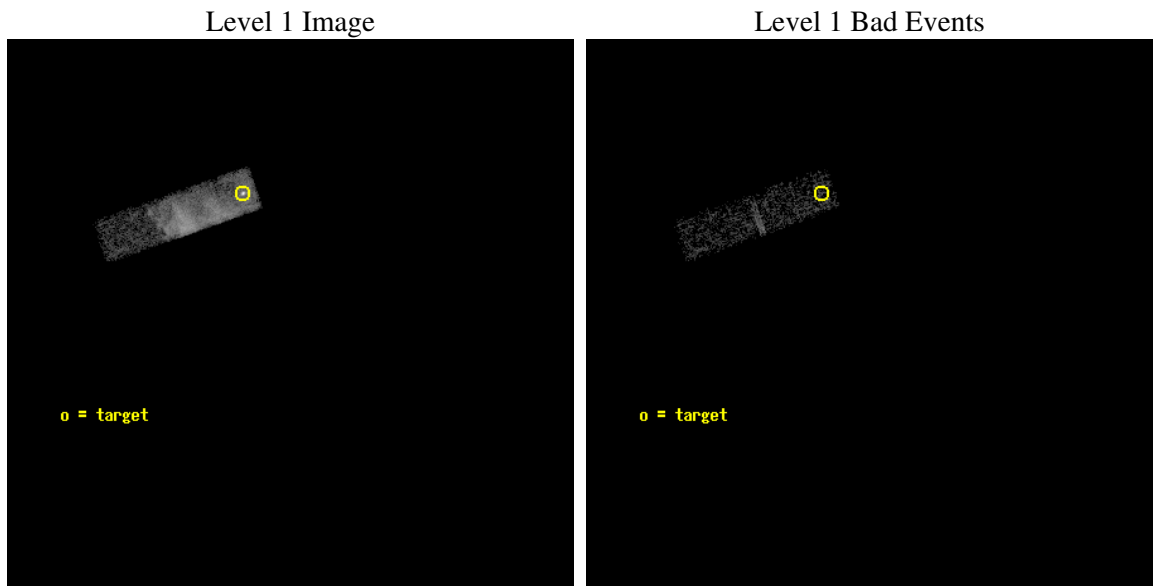
seq_num	500305
obs_id	3517
title	OBSERVATION OF SNR RCW103
observer	Professor Gordon Garmire
object	RCW103
dtcycle	0
cycle	P
ra_targ	244.40125
dec_targ	-51.040278
ra_nom	244.33601815118
dec_nom	-51.150592981586
roll_nom	250.70756143706
revision	2
ontime	5401.6000804901
livetime	5138.0196713499
ontime3	5401.6000804901
l2events	27831



## 2 OBI

### 2.1 OBI

#### 2.1.1 Images



#### 2.1.2 Bias

Chip 3



### 2.1.3 Parameters

obi_num	0
ascdsver	7.6.8
caldbver	3.2.2
date	2006-07-04T09:51:04
revision	2

sched_exp_time	5000.000000
ontime	5830.8617101908
ontime3	5830.8617101908
l1events	39030

### 2.1.4 Events

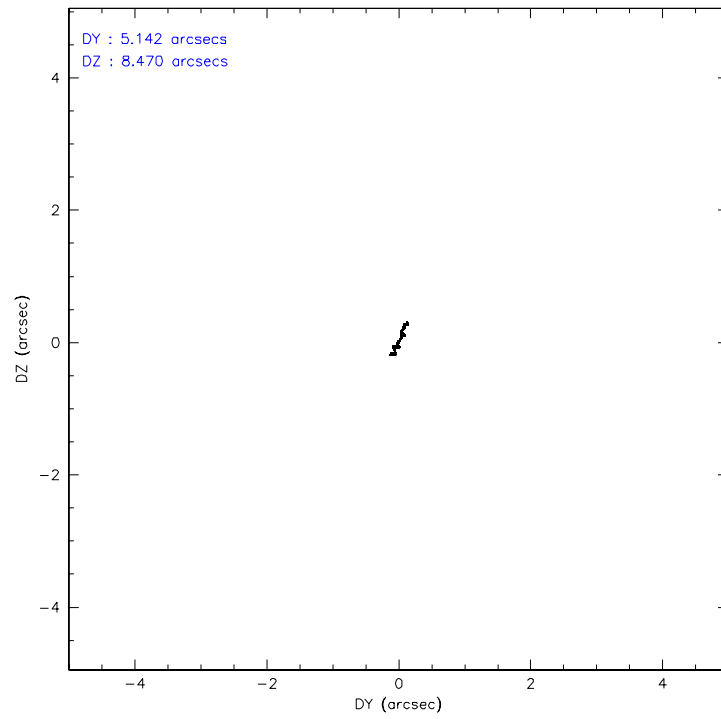
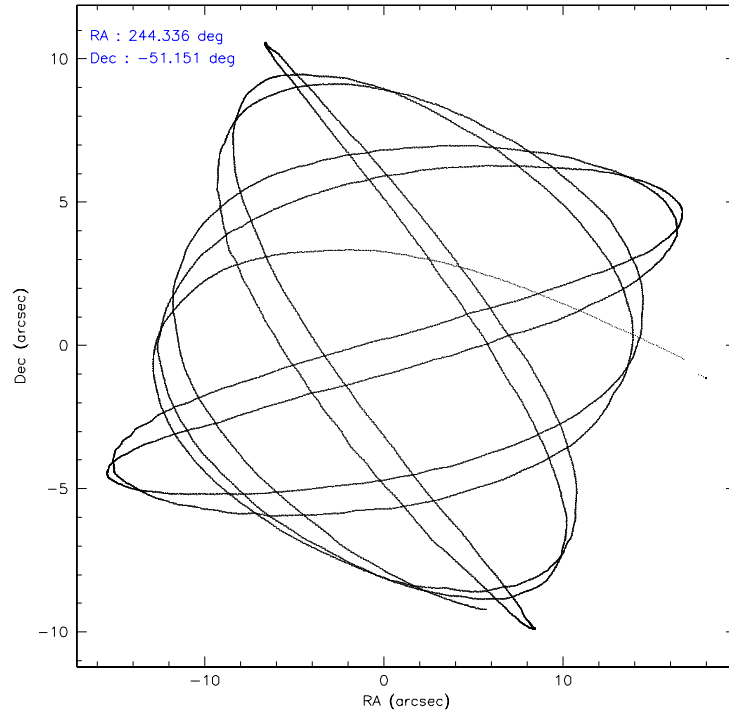
	<b>ccd 3</b>
level 1 events	39030
rejected events	10313
rejected %	26%

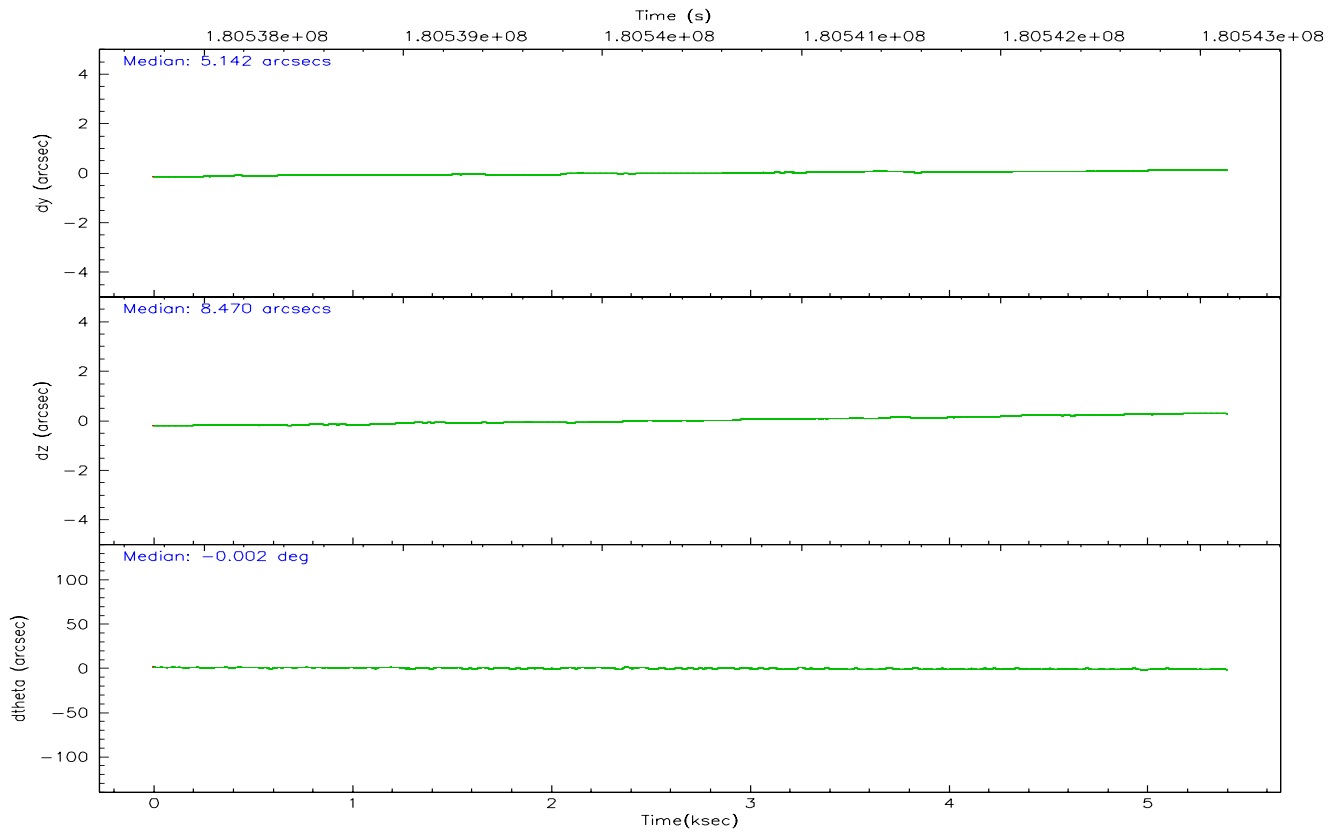
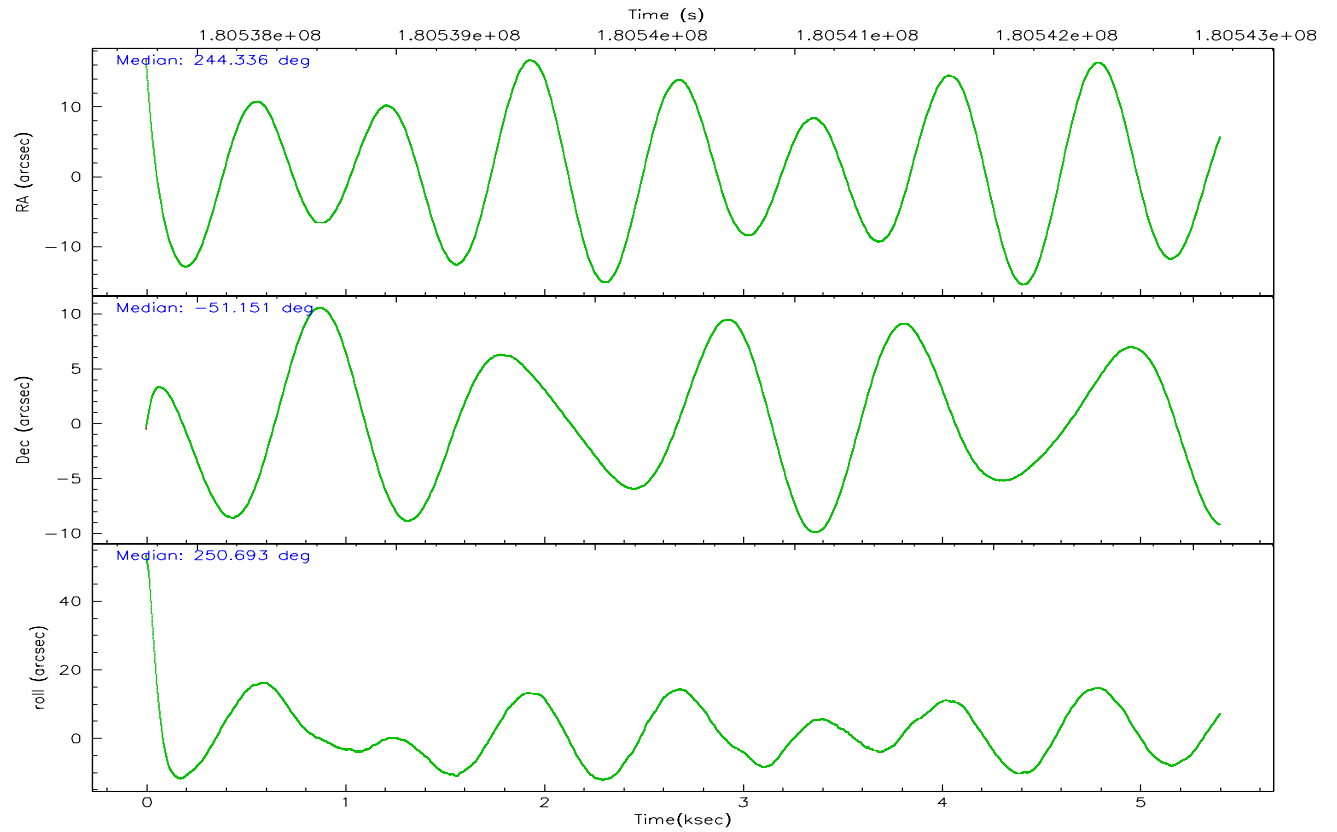
	<b>ccd 3</b>
grade 0 events	24758
	63%
grade 1 events	41
	0%
grade 2 events	2520
	6%
grade 3 events	833
	2%
grade 4 events	829
	2%
grade 5 events	399
	1%
grade 6 events	503
	1%
grade 7 events	9147
	23%

## 2.2 Compared Parameters

Parameter	Planned	Actual	Parameter	Planned	Actual
Instrument	ACIS	ACIS	Obspar format version number	6	6
Detector	ACIS-3	ACIS-3	Obspar file type	PREDICTED	ACTUAL
Grating	NONE	NONE	Obspar update status	NONE	UPDATED
Data mode	VFAINT	VFAINT	On-chip summing requested	N	N
Observation mode	POINTING	POINTING	Subarray requested	CUSTOM	1/4
Pointing RA	244.327837	244.3360181511772	Subarray start row	1	1
Pointing Dec	-51.123685	-51.15059298158597	Subarray row count	256	256
Pointing Roll	250.492411	250.707561437061	Alternating exposures requested	N	N
SIM focus pos (mm)	-0.782348	-0.7809083437167272	Primary exposure time	0.000000	0.8
SIM defocus (mm)	0	0.001439871863259334			
SIM translation stage pos (mm)	-233.592463	-233.5874344608287			
SIM translation stage offset (mm)	0	-0.005018542100998502			
Observation start time	180538143.184000	180537069.76909			
Observation start date	2003-09-21T13:27:59	2003-09-21T13:11:09			
Observation end time	180543143.184000	180544297.0444			
Observation end date	2003-09-21T14:51:19	2003-09-21T15:11:37			
Read mode	TIMED	TIMED			

## 2.3 Aspect





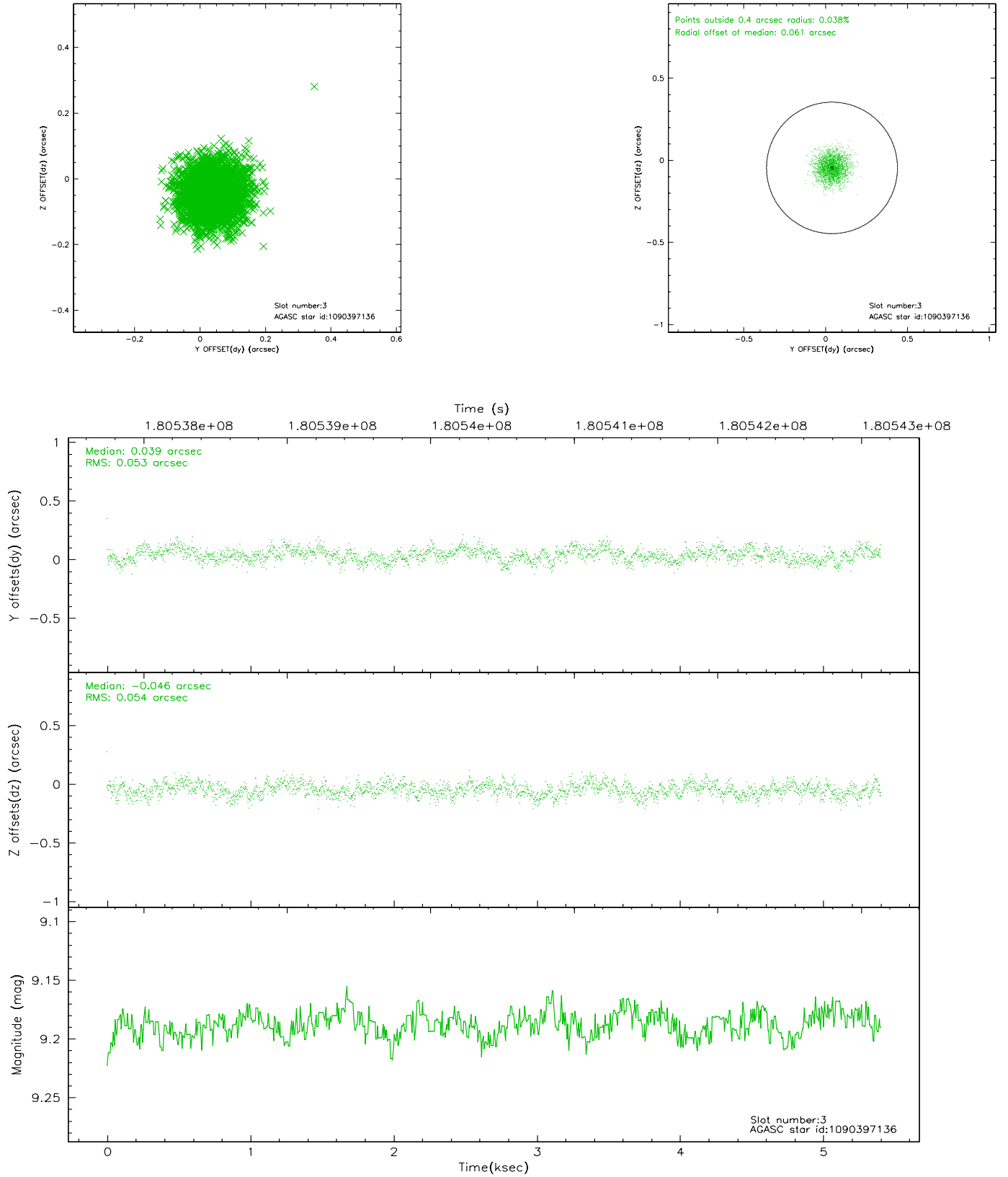
### Slot Statistics

slot	status	id	mag	n_pts	med_dy	med_dz	dr1	dr2	ra	dec	mean_y	mean_z
0	FID	ACIS-I-1	7.23	1319	0.007	0.054	0.007	0.012	0.000000	0.000000	934.60	-831.87
1	FID	ACIS-I-5	7.23	1319	-0.130	0.046	0.007	0.011	0.000000	0.000000	-1813.02	1065.05
2	FID	ACIS-I-6	7.25	1319	0.031	-0.030	0.008	0.012	0.000000	0.000000	398.96	1710.74
3	GUIDE	1090397136	9.19	2636	0.039	-0.046	0.081	0.128	243.971780	-50.589354	-1539.25	-1408.58
4	GUIDE	1090921280	9.09	2634	-0.062	0.077	0.070	0.111	244.365071	-50.638328	-1675.90	-503.58
5	GUIDE	1090922592	8.67	2637	0.051	-0.141	0.074	0.117	243.541382	-50.784876	-541.58	-2090.56
6	GUIDE	1091059112	9.07	2634	-0.049	0.133	0.079	0.126	245.180420	-50.736664	-1951.96	1368.97
7	GUIDE	1090924384	8.05	2636	0.019	-0.019	0.072	0.115	243.330505	-50.934017	126.31	-2354.64

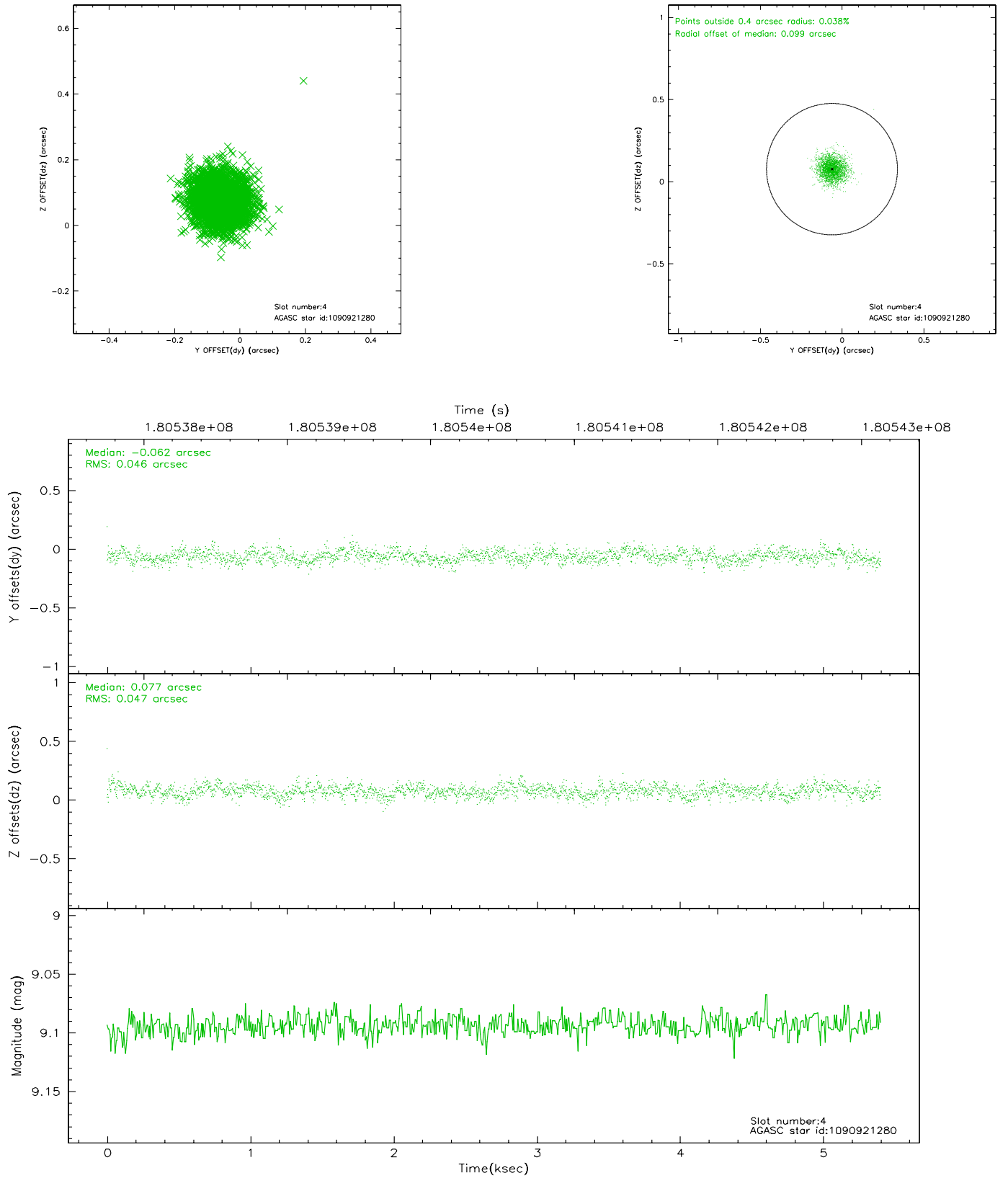


## 2.4 Star Slots

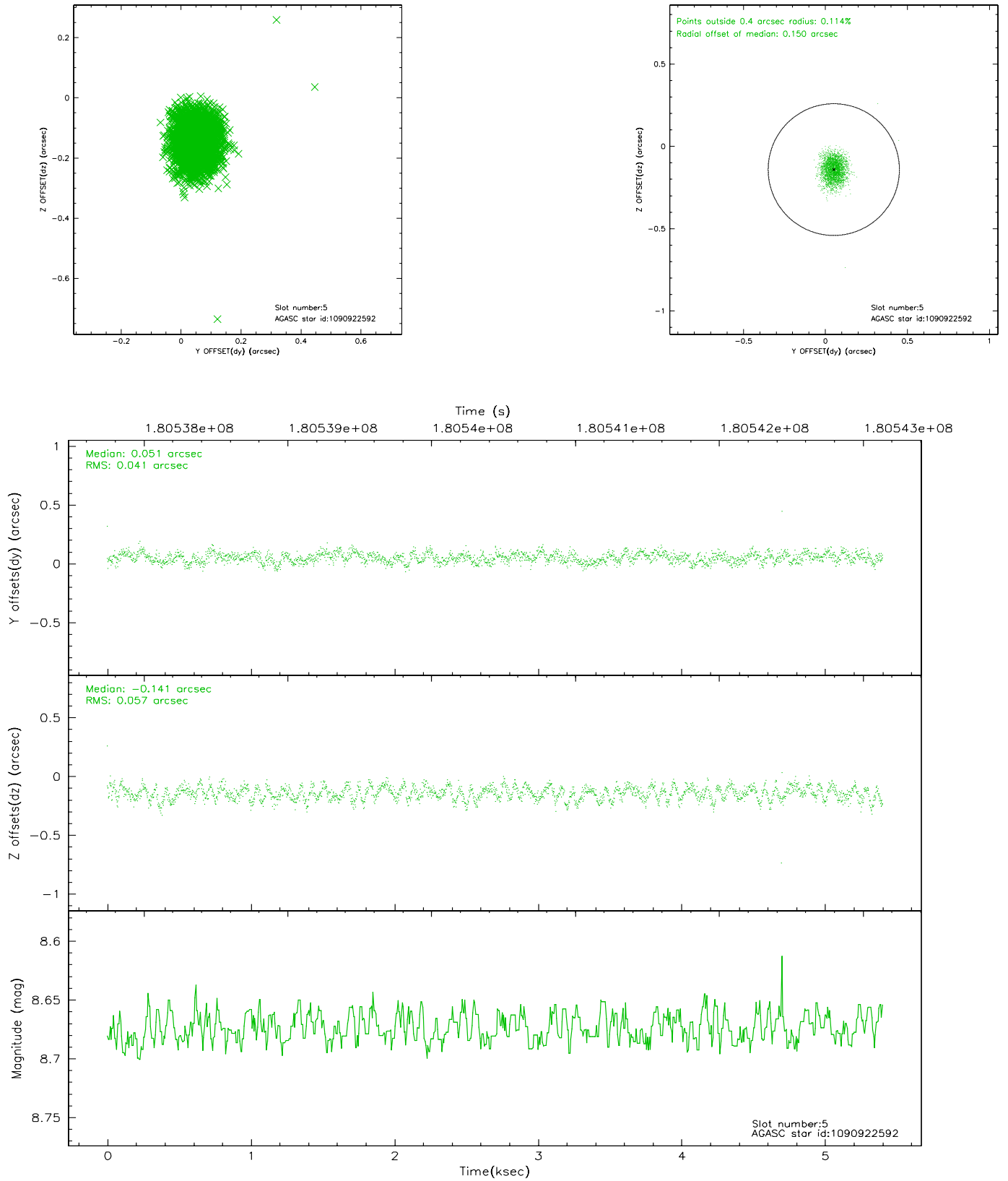
### 2.4.1 Slot 3



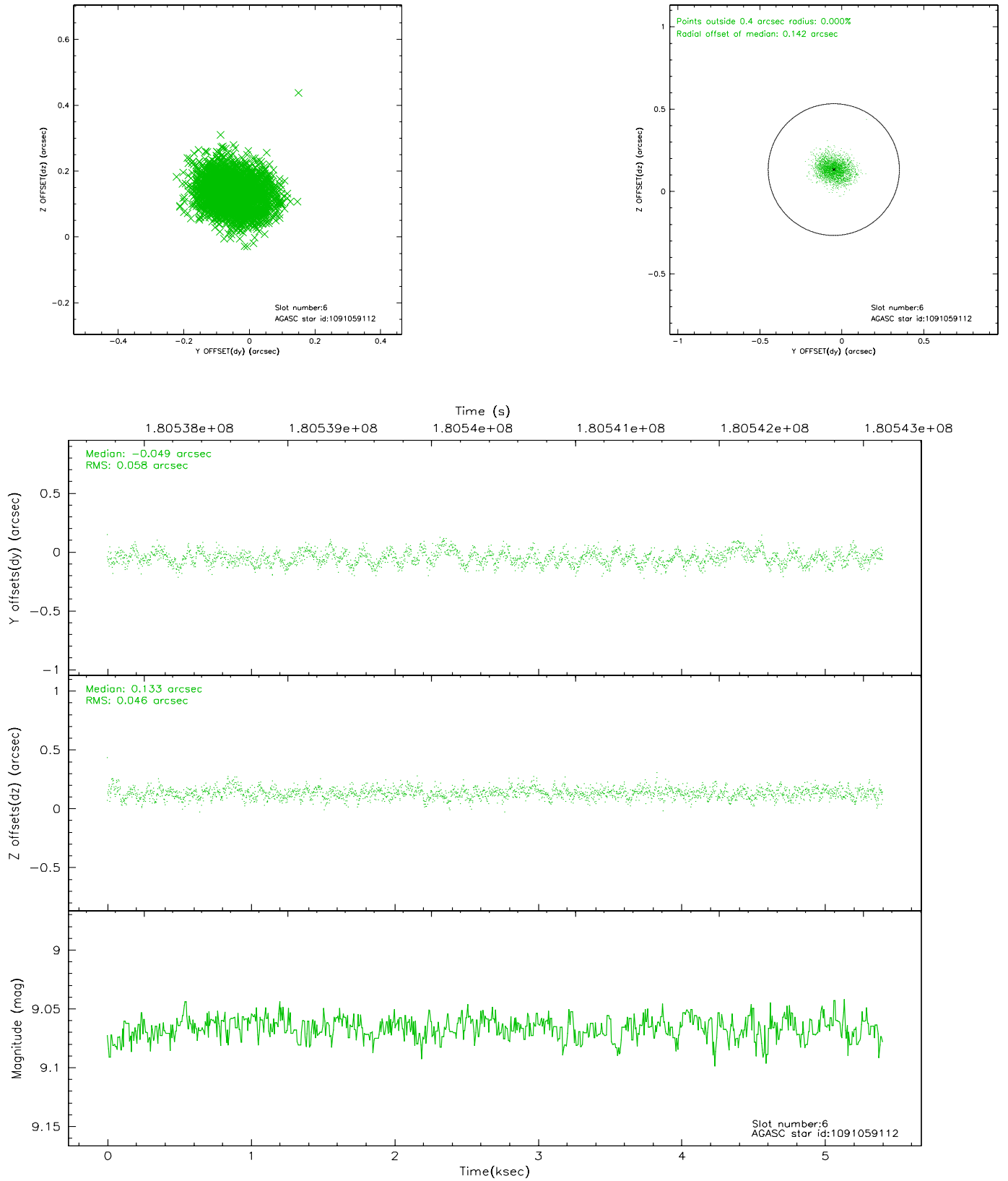
## 2.4.2 Slot 4



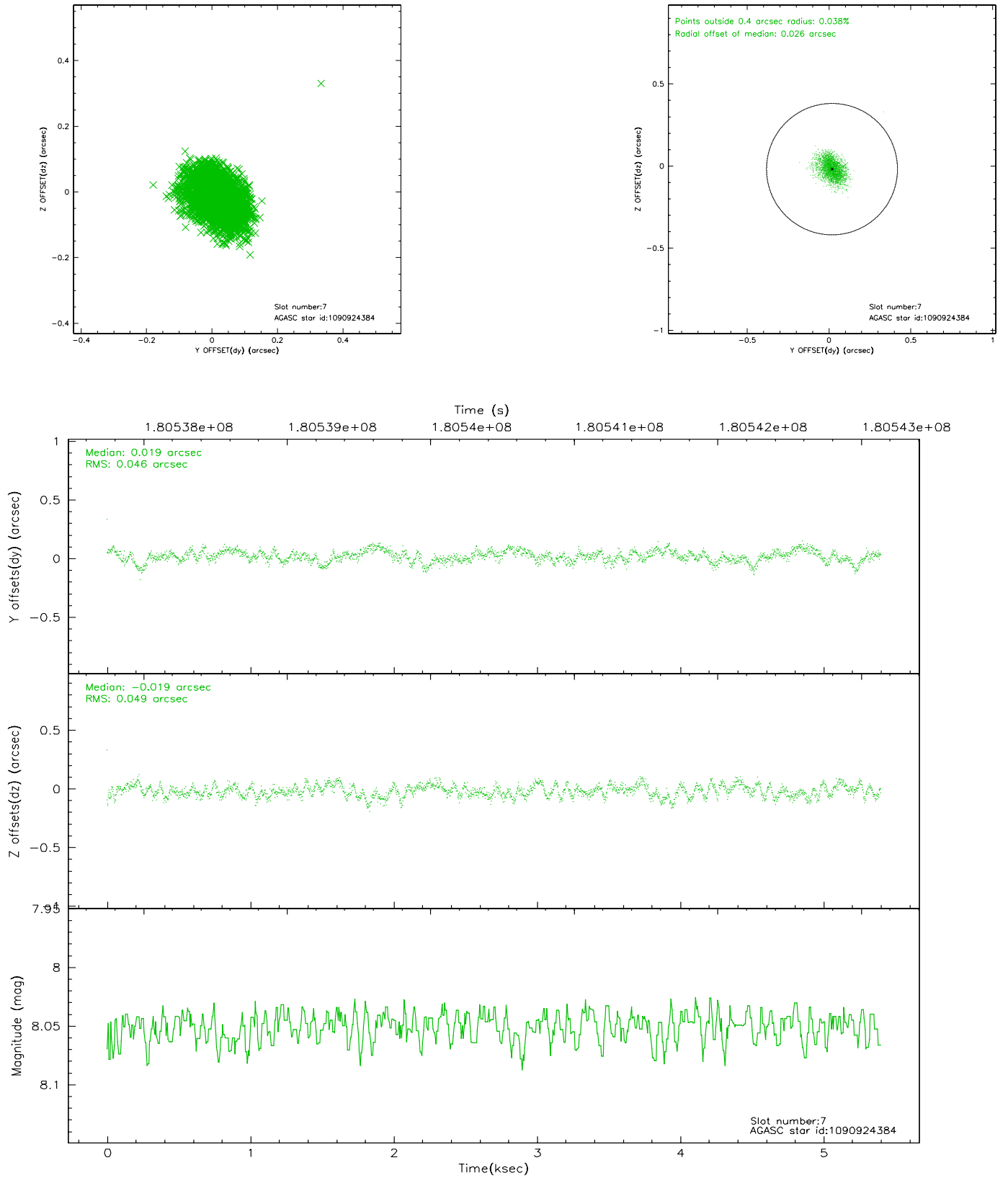
### 2.4.3 Slot 5



## 2.4.4 Slot 6

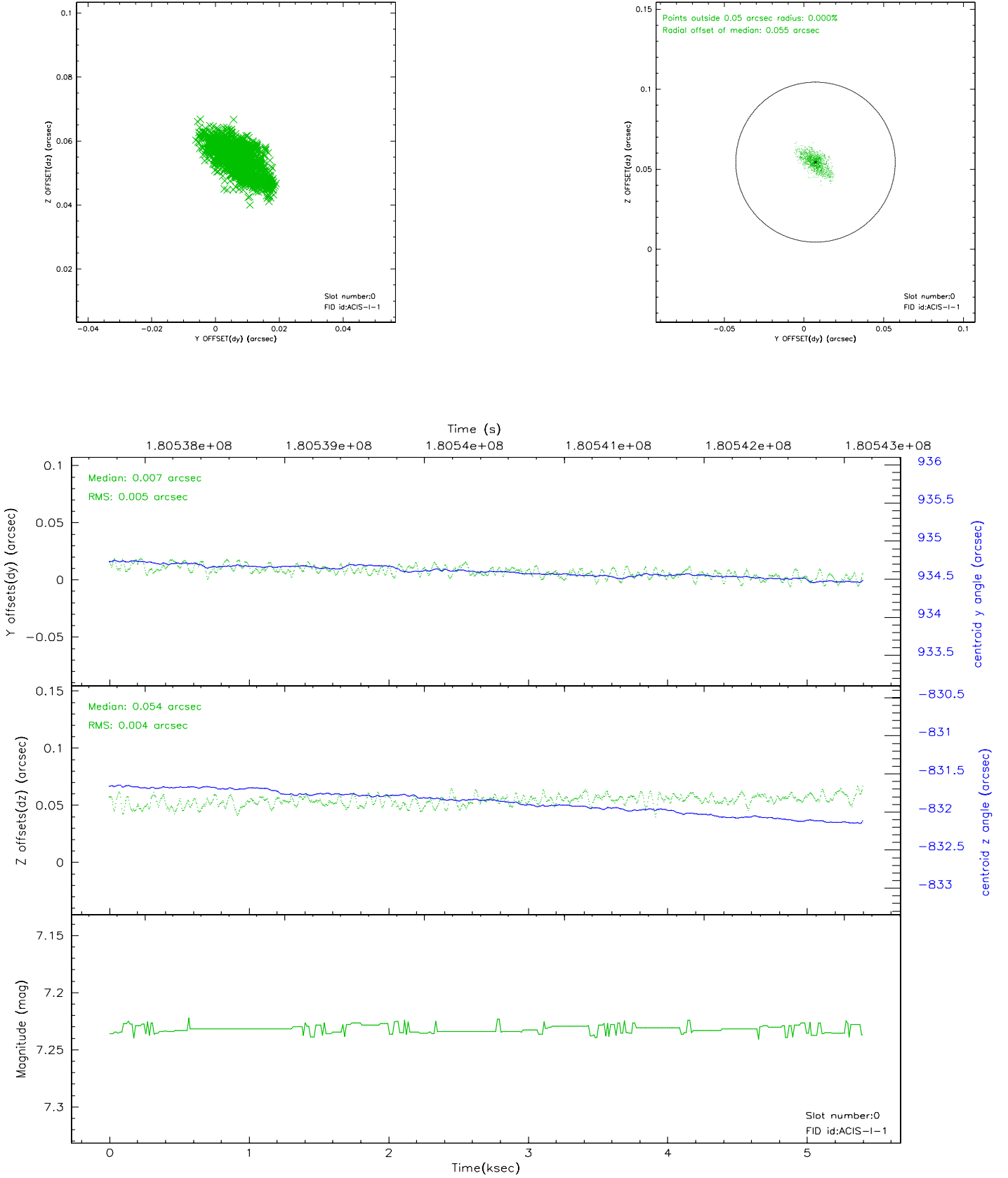


## 2.4.5 Slot 7

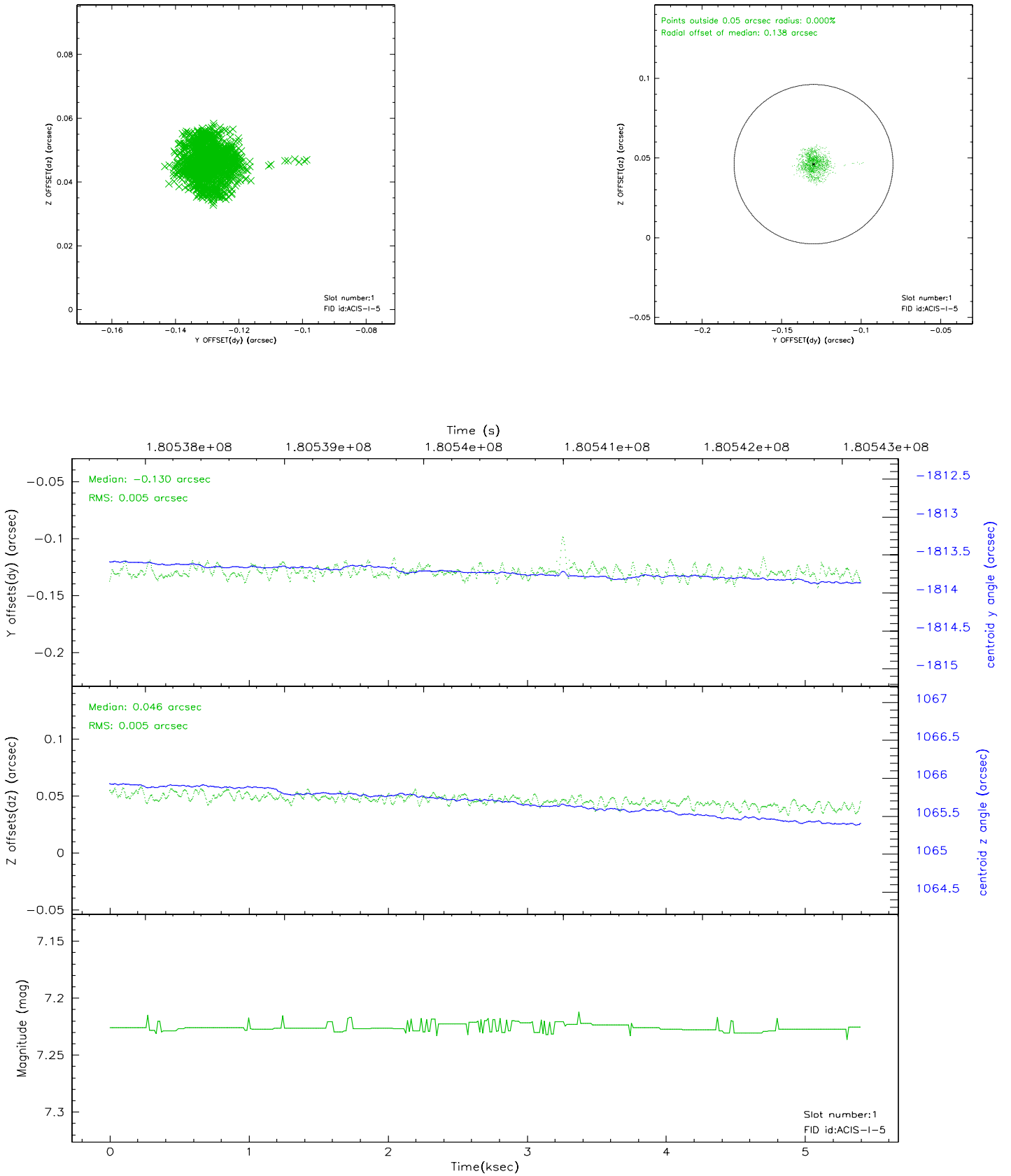


## 2.5 FID Slots

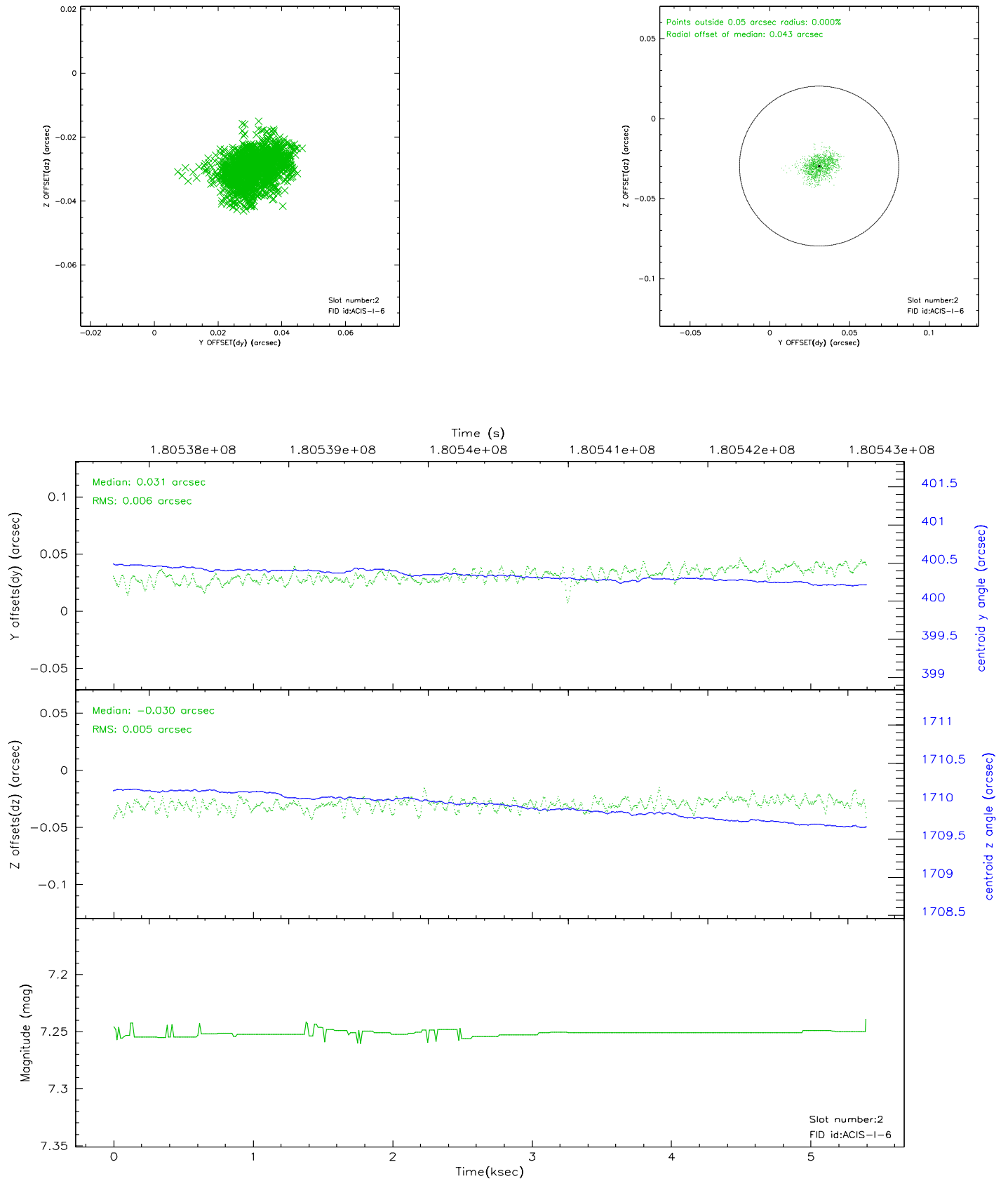
### 2.5.1 Slot 0



## 2.5.2 Slot 1



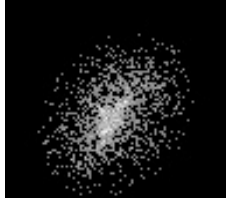
### 2.5.3 Slot 2





### 3 Point Sources

7.06 arcmin



## A Summary

### A.1 Status

V&V Scientist	Beth Sundheim
V&V Date (YYYY-MM-DD)	2006.07.05
V&V Edition	1
V&V Disposition and Status	OK
V&V Charge Time	5.401

### A.2 Comments