

# V&V Reference Report

## L2 ASCDS Version : 7.6.8.1

Observation 4424 - L2 Version 001  
Chandra X-Ray Center

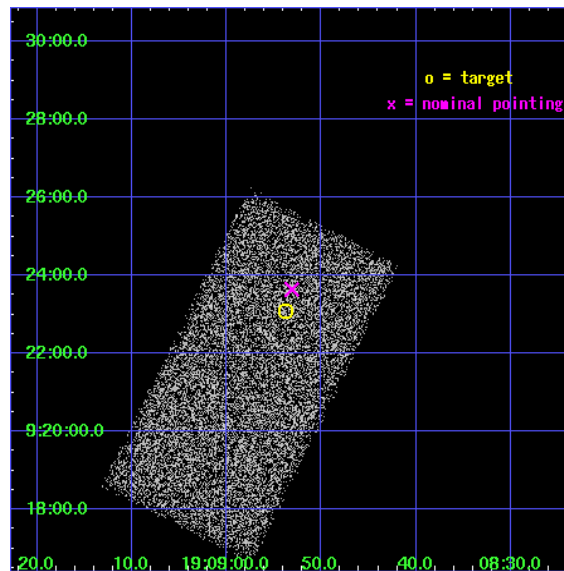
L2 Processing Date : Aug 11 2006

## Contents

<b>1</b>	<b>Front</b>	<b>2</b>
<b>2</b>	<b>OBI</b>	<b>3</b>
2.1	OBI . . . . .	3
2.1.1	Images . . . . .	3
2.1.2	Bias . . . . .	3
2.1.3	Parameters . . . . .	4
2.1.4	Events . . . . .	4
2.2	Compared Parameters . . . . .	5
2.3	Aspect . . . . .	6
2.4	Star Slots . . . . .	9
2.4.1	Slot 3 . . . . .	9
2.4.2	Slot 4 . . . . .	10
2.4.3	Slot 5 . . . . .	11
2.4.4	Slot 6 . . . . .	12
2.4.5	Slot 7 . . . . .	13
2.5	FID Slots . . . . .	14
2.5.1	Slot 0 . . . . .	14
2.5.2	Slot 1 . . . . .	15
2.5.3	Slot 2 . . . . .	16
<b>3</b>	<b>Point Sources</b>	<b>17</b>
<b>A</b>	<b>Summary</b>	<b>18</b>
A.1	Status . . . . .	18
A.2	Comments . . . . .	18

# 1 Front

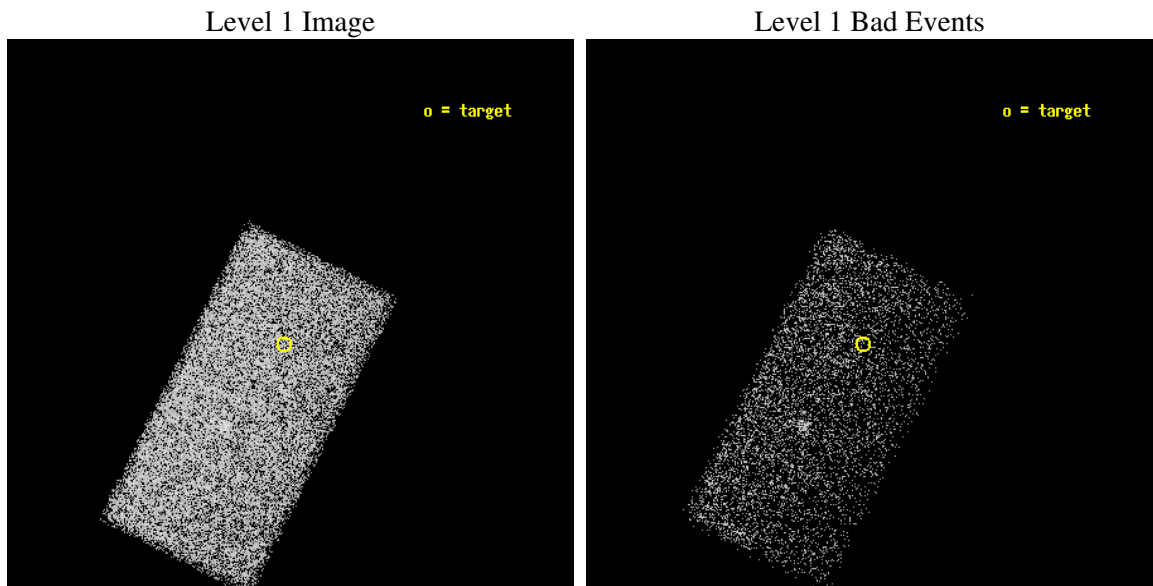
seq_num	400321
obs_id	4424
title	THE BHC SOFT X-RAY TRANSIENT XTE J1908+094 RETURNING TO QUIESCENCE
observer	Dr Peter Jonker
object	XTE J1908+094
dtcycle	0
cycle	P
ra_targ	287.224167
dec_targ	9.384694
ra_nom	287.22135461111
dec_nom	9.3939814110251
roll_nom	116.6915877339
revision	2
ontime	10687.5
livetime	10402.877277683
ontime7	10687.5
l2events	18738



## 2 OBI

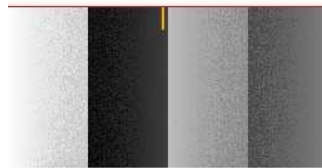
### 2.1 OBI

#### 2.1.1 Images



#### 2.1.2 Bias

Chip 7



### 2.1.3 Parameters

obi_num	1
ascdsver	7.6.8.1
caldbver	3.2.3
date	2006-08-11T19:42:28
revision	2

sched_exp_time	9955.311000
ontime	10745.54594478
ontime7	10745.54594478
l1events	46630

### 2.1.4 Events

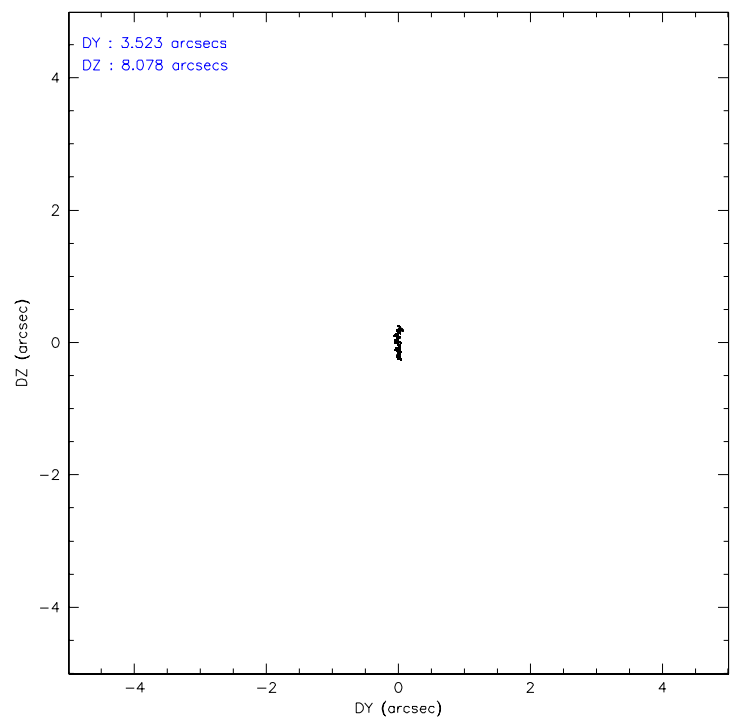
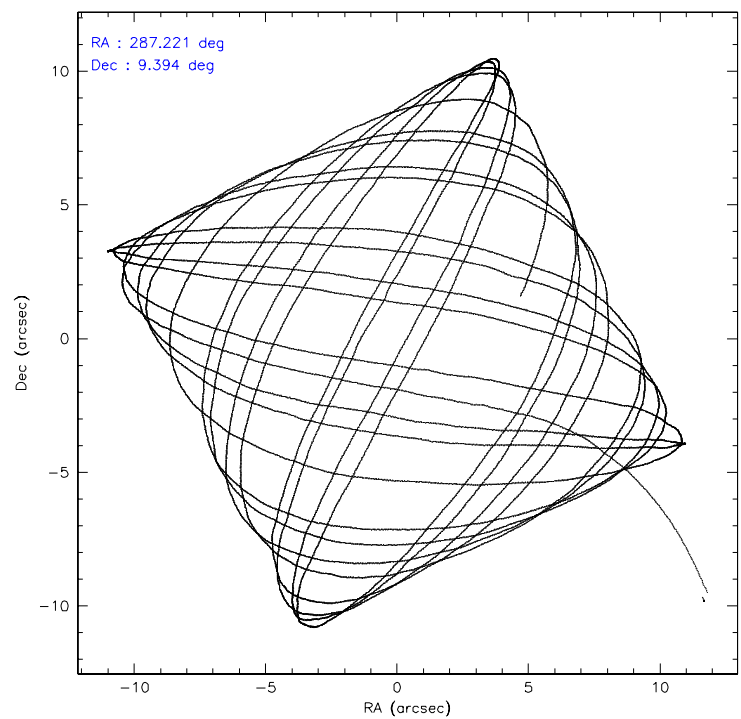
	<b>ccd 7</b>
level 1 events	46630
rejected events	27371
rejected %	58%

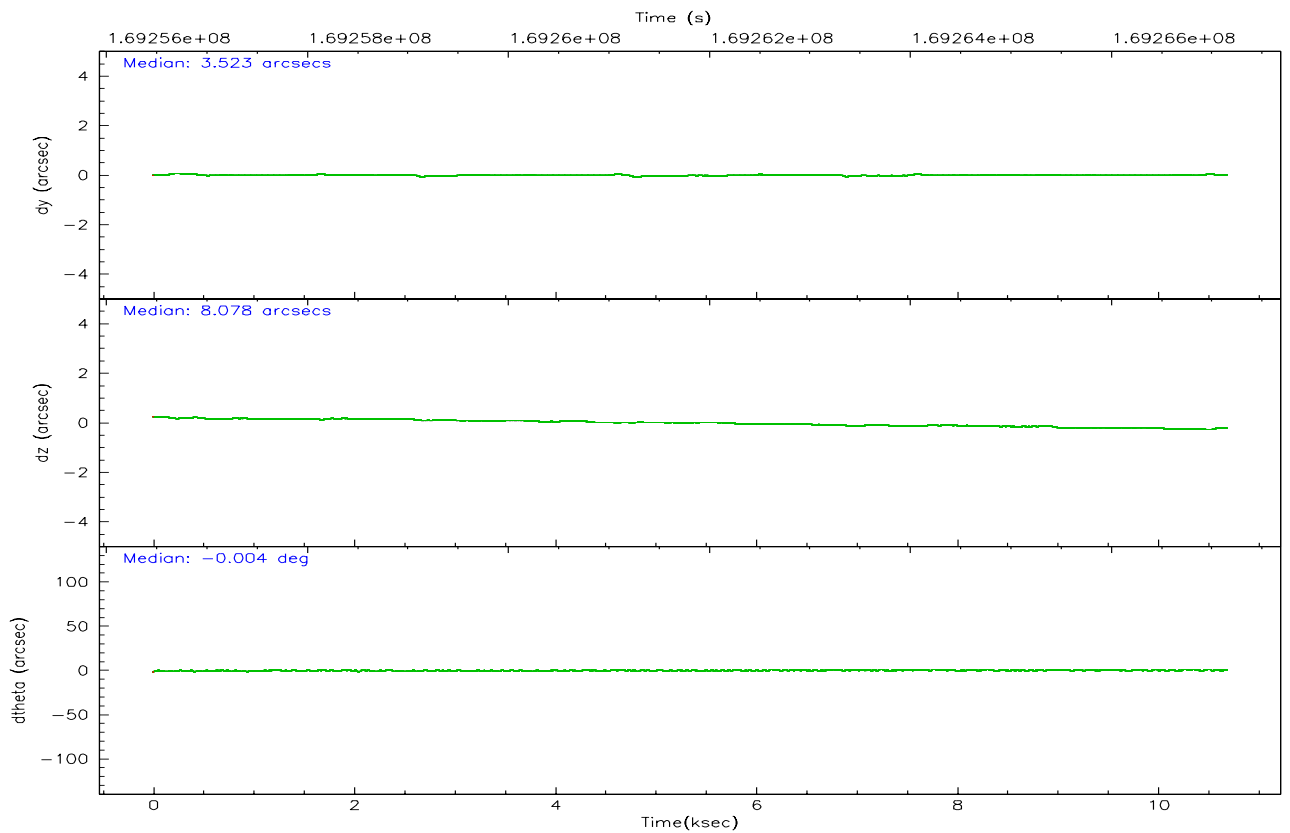
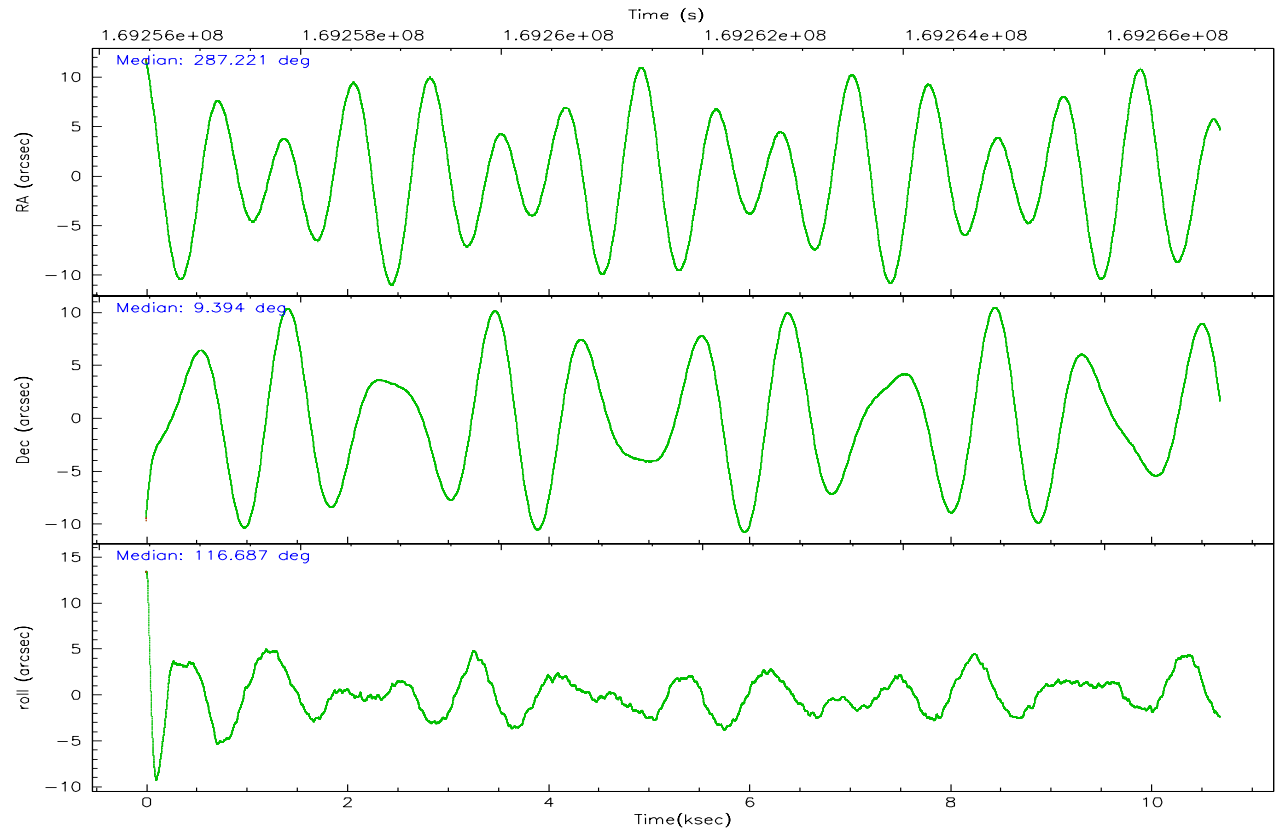
	<b>ccd 7</b>
grade 0 events	1329
	2%
grade 1 events	39
	0%
grade 2 events	4593
	9%
grade 3 events	1221
	2%
grade 4 events	1238
	2%
grade 5 events	3158
	6%
grade 6 events	10998
	23%
grade 7 events	24054
	51%

## 2.2 Compared Parameters

Parameter	Planned	Actual	Parameter	Planned	Actual
Instrument	ACIS	ACIS	Obspar format version number	6	6
Detector	ACIS-7	ACIS-7	Obspar file type	PREDICTED	ACTUAL
Grating	NONE	NONE	Obspar update status	NONE	UPDATED
Data mode	FAINT	FAINT	On-chip summing requested	N	N
Observation mode	POINTING	POINTING	Subarray requested	1/2	1/2
Pointing RA	287.244640	287.2213546111128	Subarray start row	0	257
Pointing Dec	9.379316	9.39398141102512	Subarray row count	1024	512
Pointing Roll	116.531135	116.6915877339008	Alternating exposures requested	N	N
SIM focus pos (mm)	-0.684267	-0.6828225247311905	Primary exposure time	0.000000	1.5
SIM defocus (mm)	0	0.001444936568705701			
SIM translation stage pos (mm)	-190.132523	-190.1400660498719			
SIM translation stage offset (mm)	0	0.00754346686406393			
Observation start time	169257192.184000	169255956.70078			
Observation start date	2003-05-13T23:52:08	2003-05-13T23:32:36			
Observation end time	169267147.184000	169267461.81376			
Observation end date	2003-05-14T02:38:03	2003-05-14T02:44:21			
Read mode	TIMED	TIMED			

## 2.3 Aspect





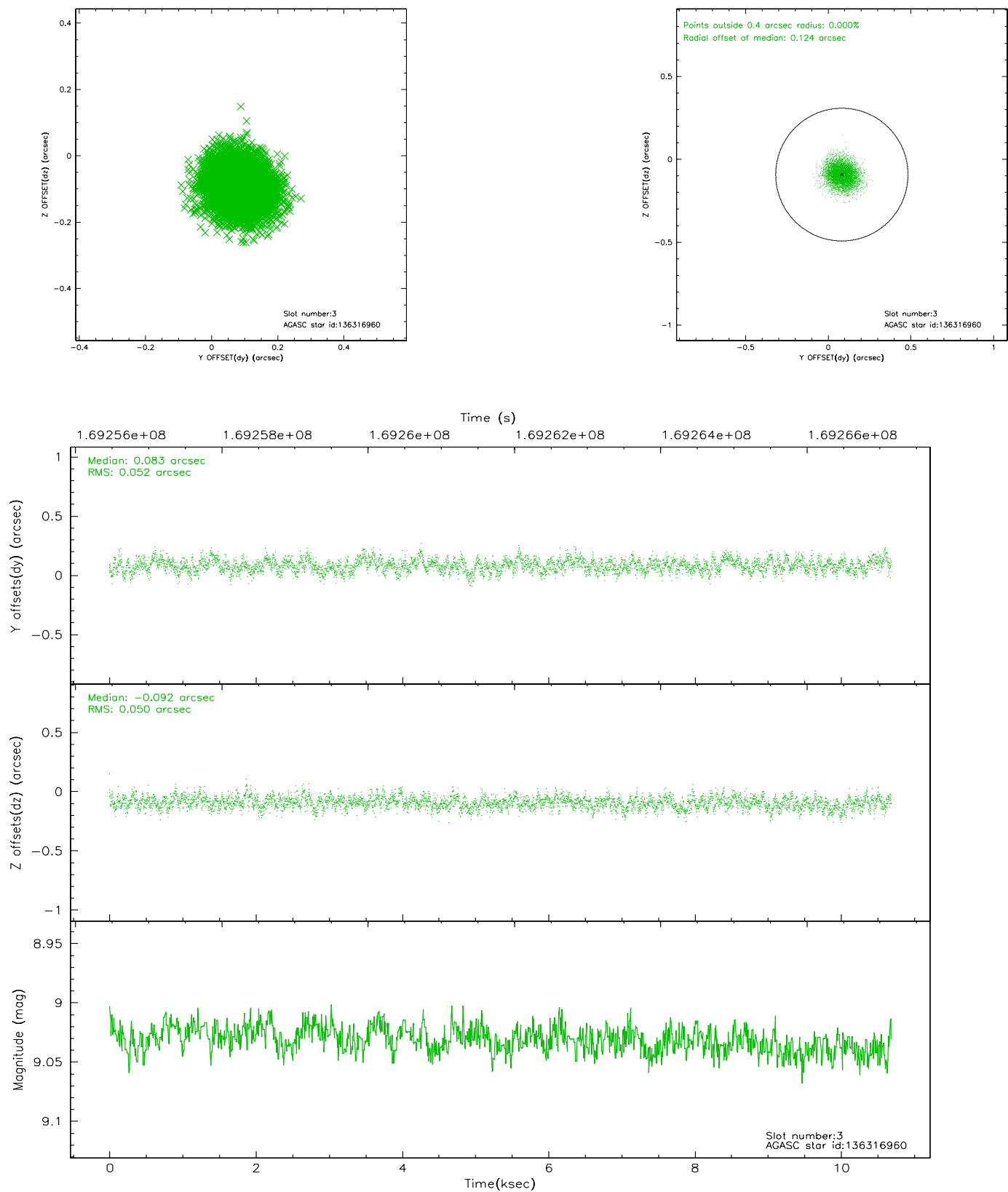
### Slot Statistics

slot	status	id	mag	n_pts	med_dy	med_dz	dr1	dr2	ra	dec	mean_y	mean_z
0	FID	ACIS-S-1	7.19	2608	0.021	0.014	0.010	0.017	0.000000	0.000000	939.84	-1724.90
1	FID	ACIS-S-5	7.24	2606	-0.020	0.035	0.006	0.011	0.000000	0.000000	-1808.88	172.24
2	FID	ACIS-S-6	7.36	2608	-0.022	-0.036	0.008	0.014	0.000000	0.000000	404.88	816.63
3	GUIDE	136316960	9.03	5212	0.083	-0.092	0.077	0.124	287.104881	9.133555	-569.45	839.58
4	GUIDE	136317344	9.25	5213	0.156	-0.134	0.093	0.152	287.032148	8.921467	-1136.86	1412.36
5	GUIDE	136450552	9.25	5215	0.110	0.058	0.088	0.144	287.756963	9.197020	-1399.12	-1336.05
6	GUIDE	136979696	9.38	5211	-0.126	0.046	0.091	0.148	287.607746	9.703592	469.39	-1674.71
7	GUIDE	136849008	9.63	5209	-0.226	0.125	0.113	0.184	287.041390	10.029261	2415.50	-400.55

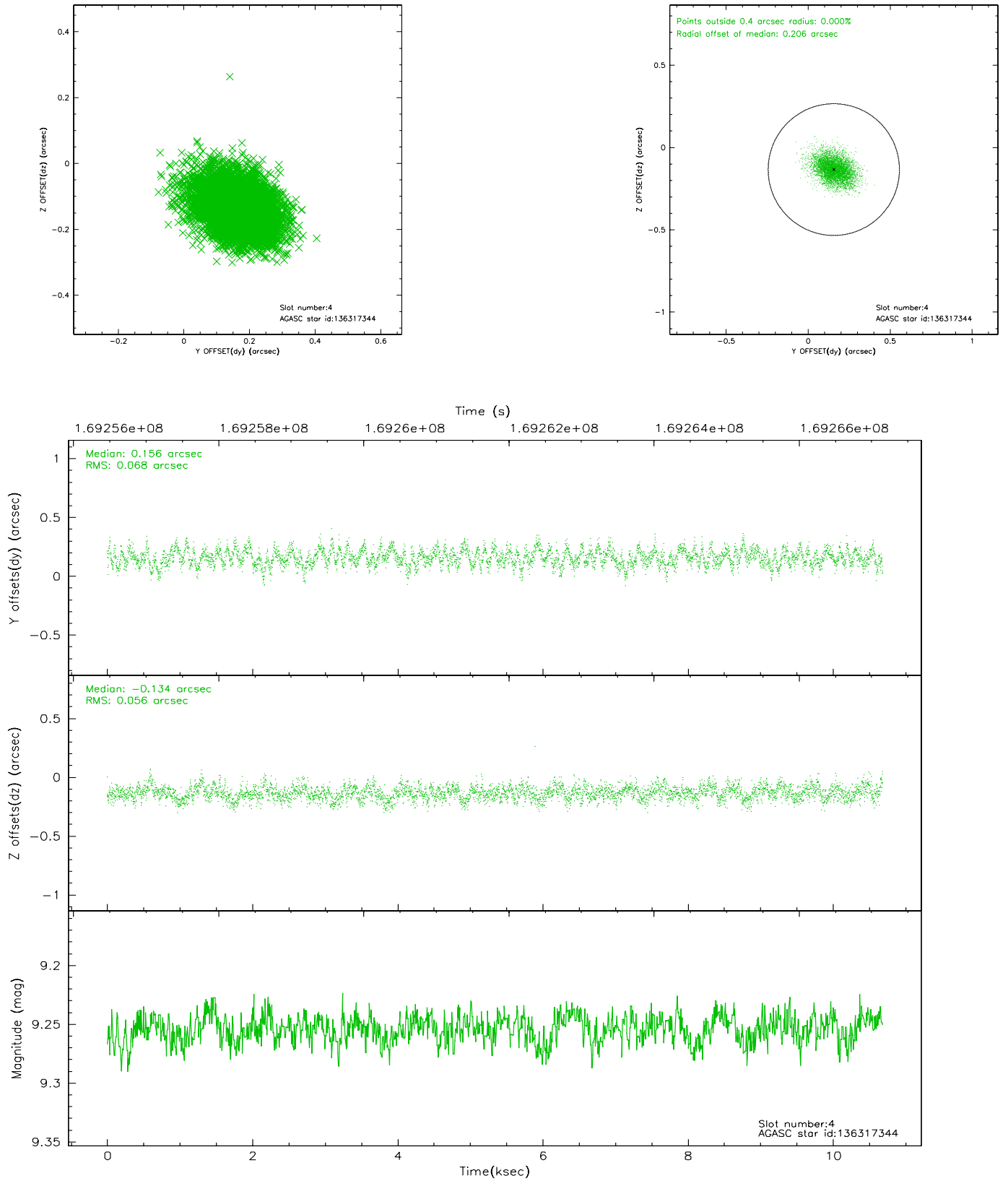


## 2.4 Star Slots

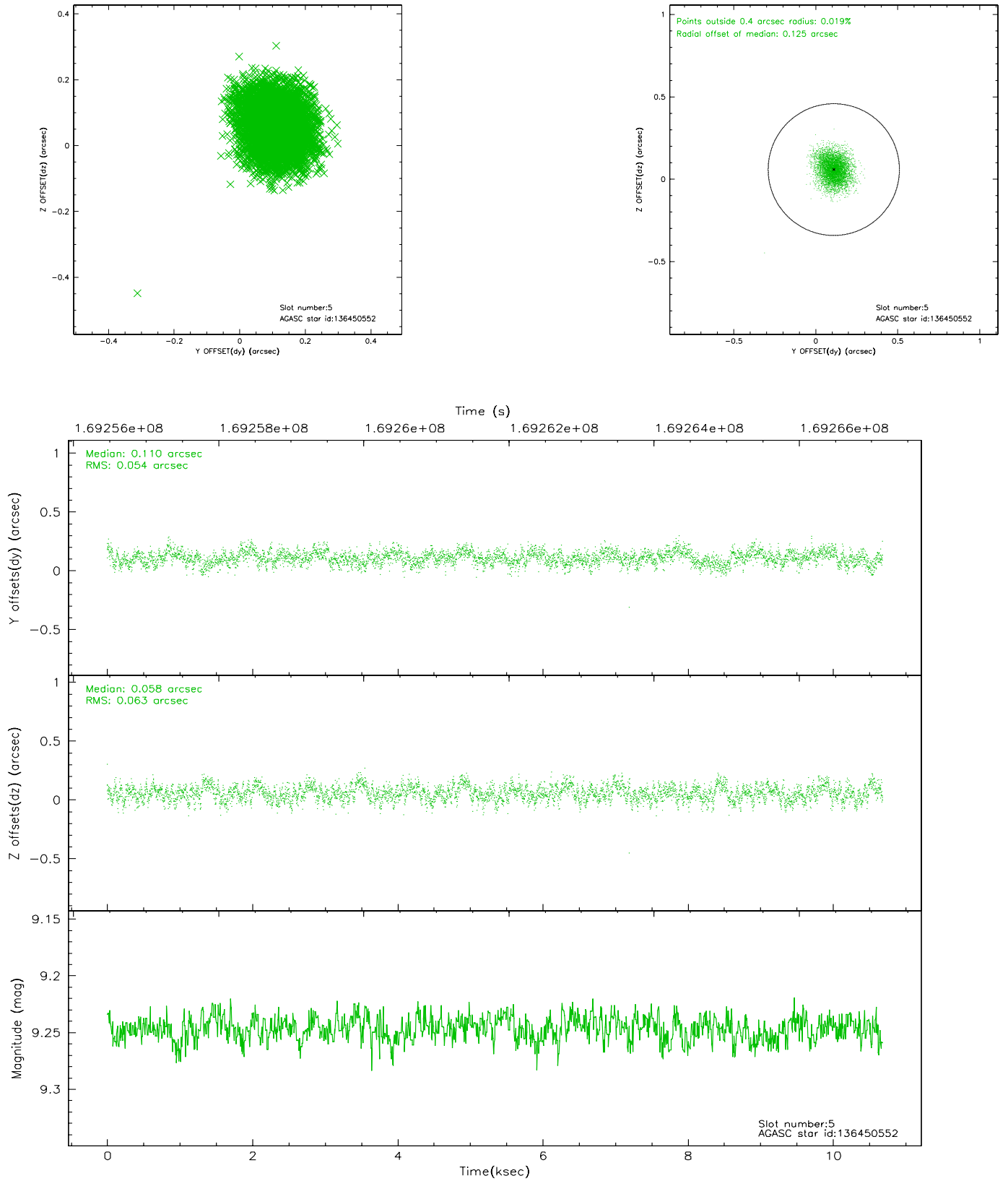
### 2.4.1 Slot 3



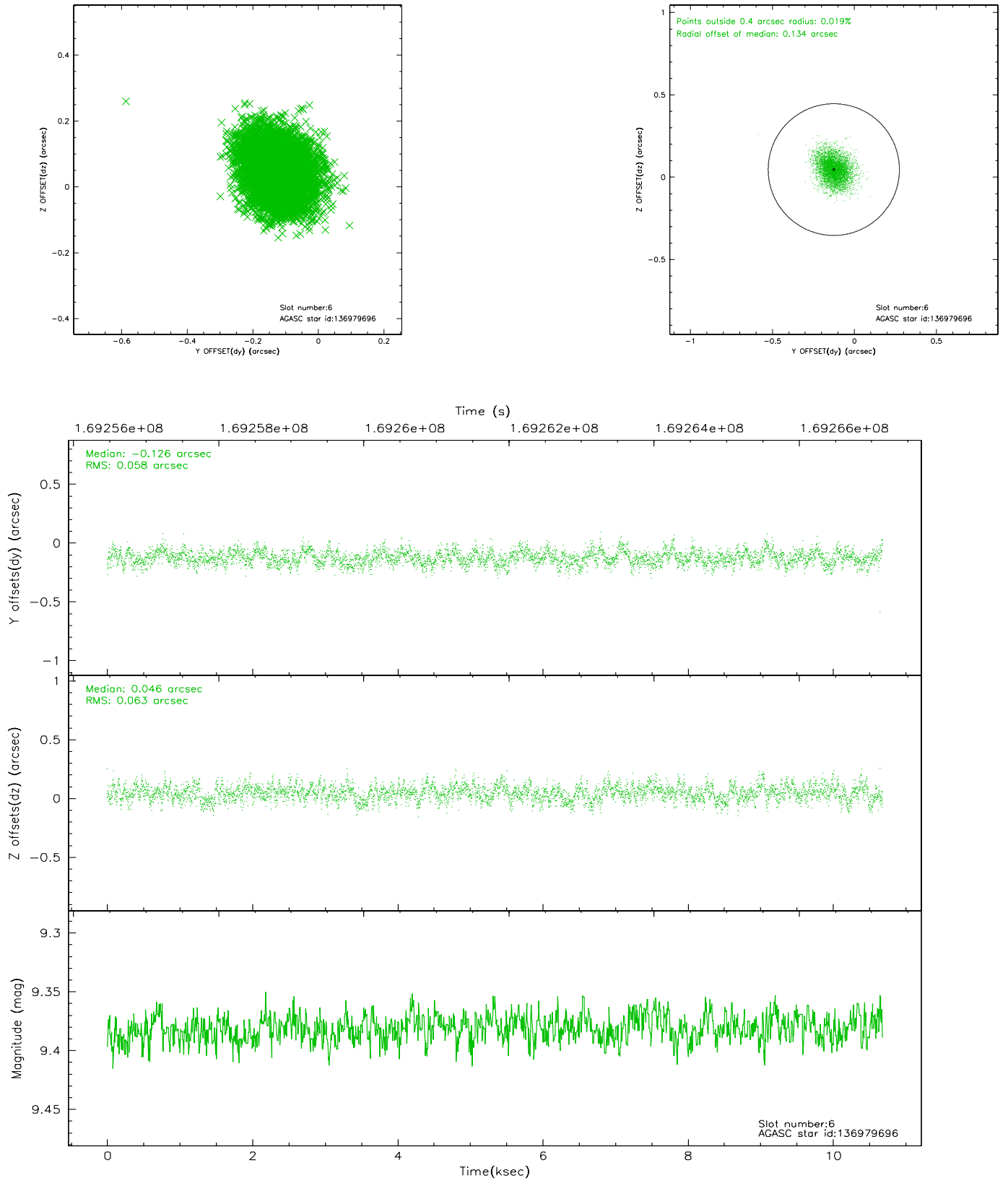
## 2.4.2 Slot 4



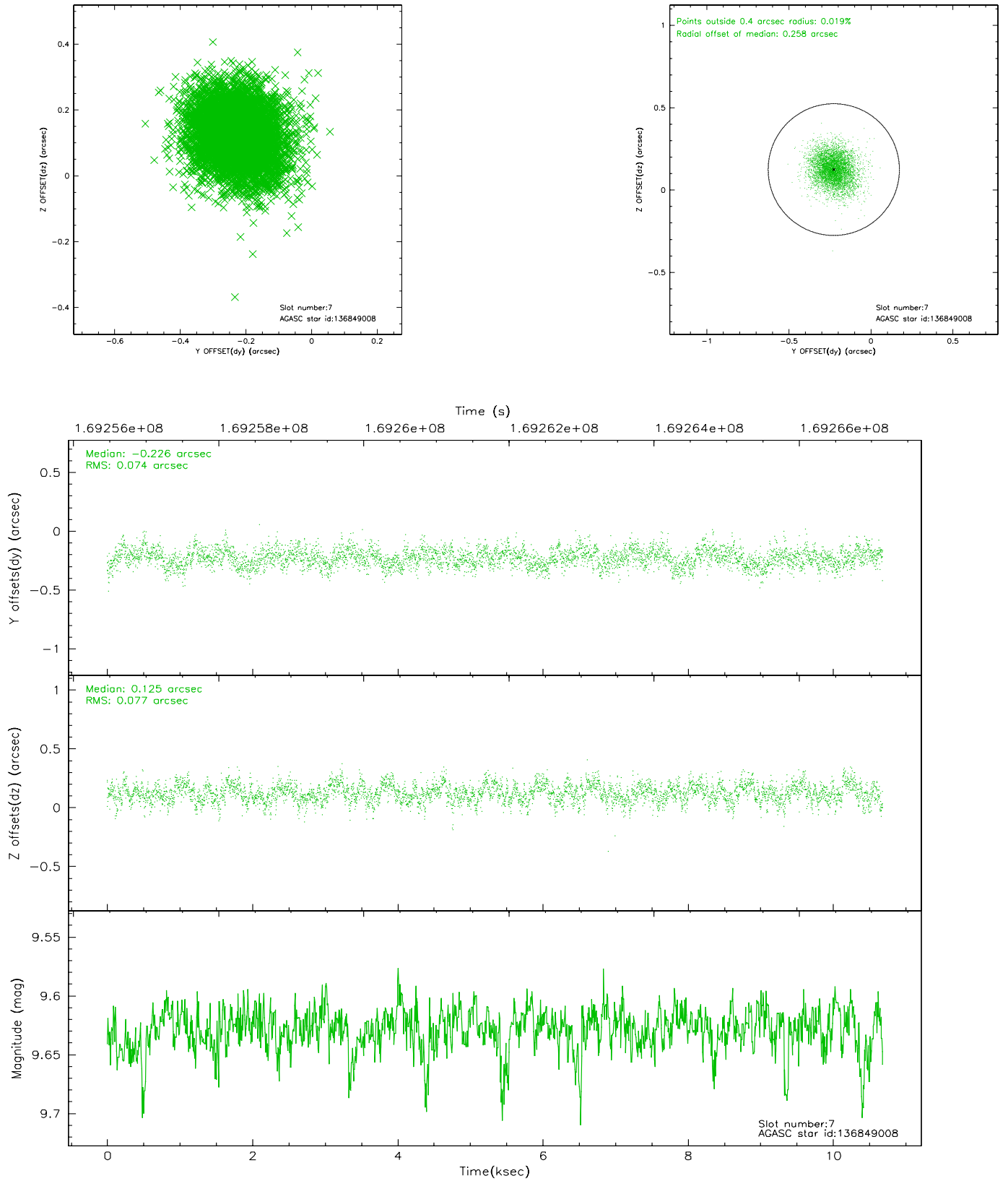
### 2.4.3 Slot 5



## 2.4.4 Slot 6

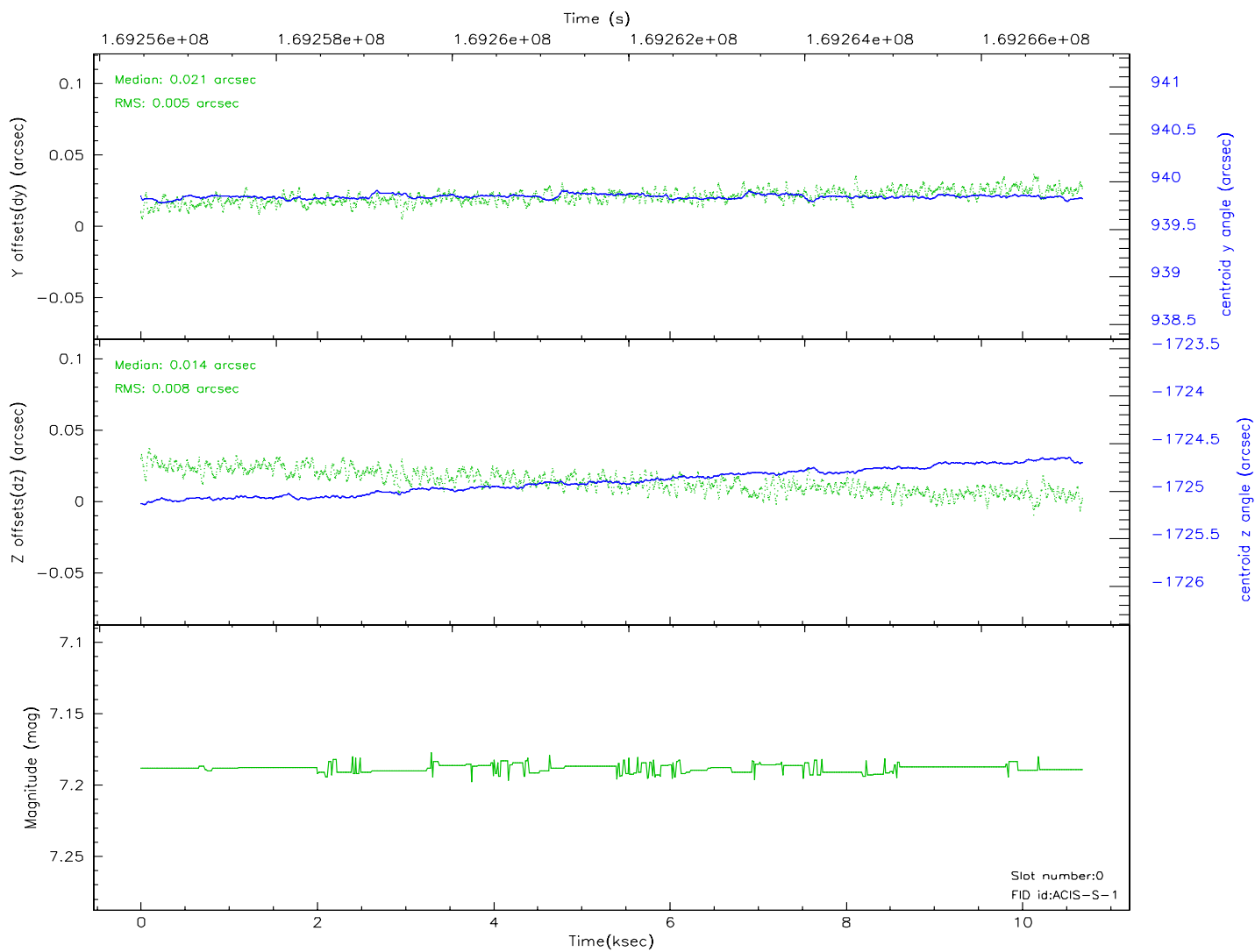
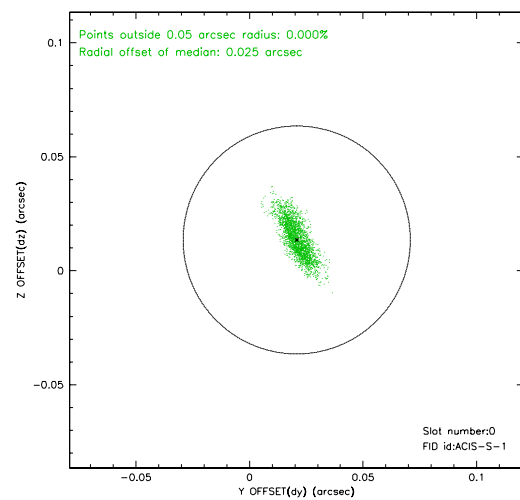
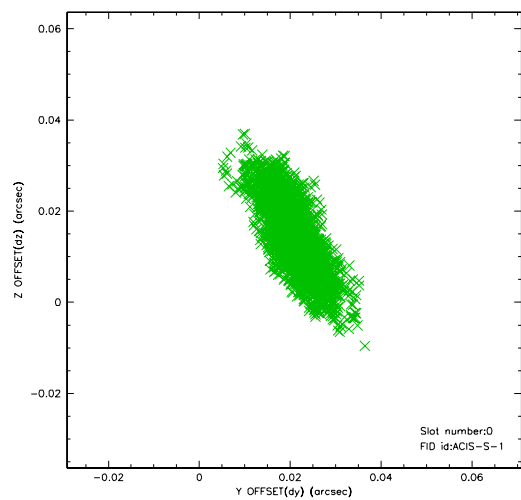


## 2.4.5 Slot 7

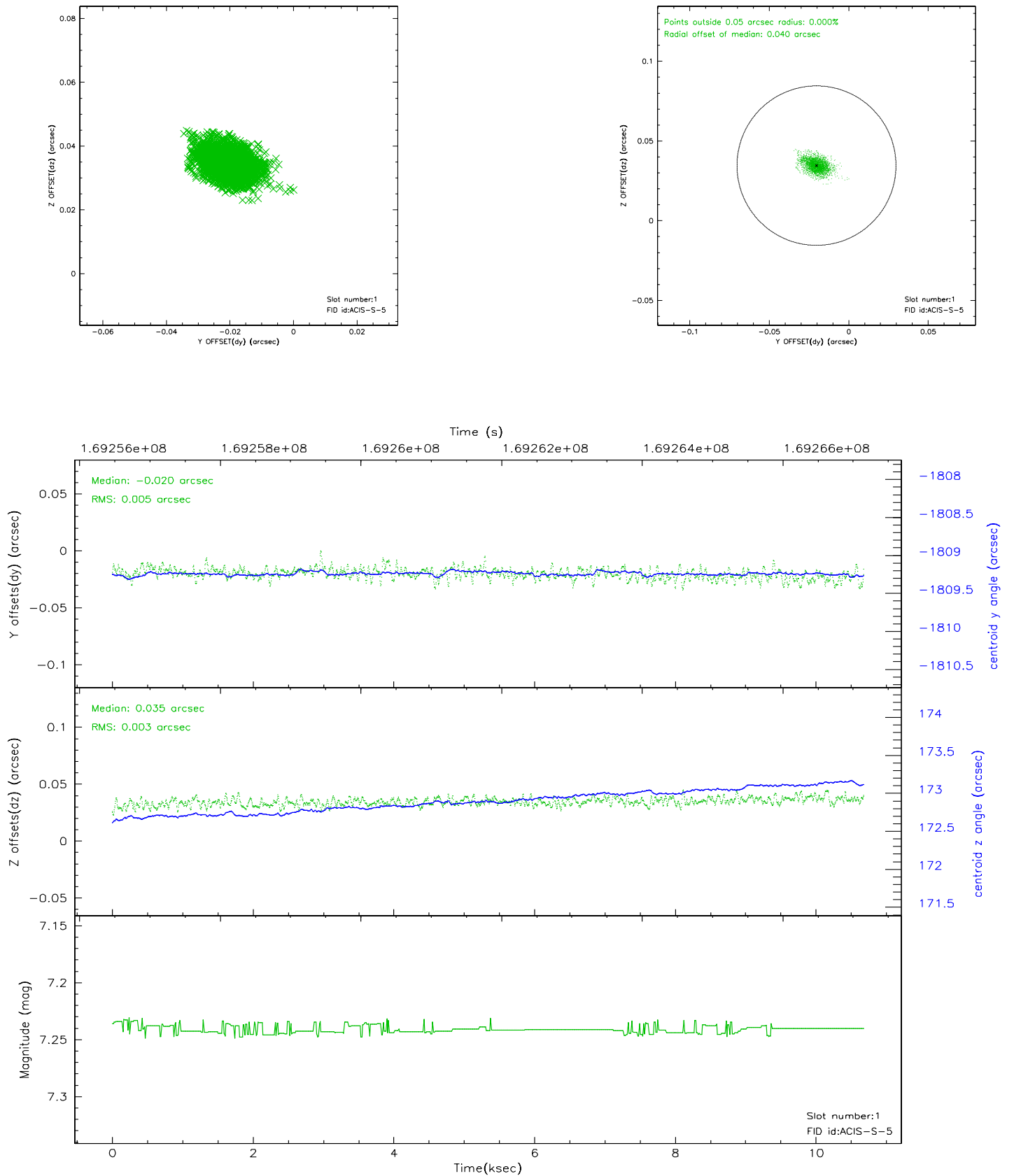


## 2.5 FID Slots

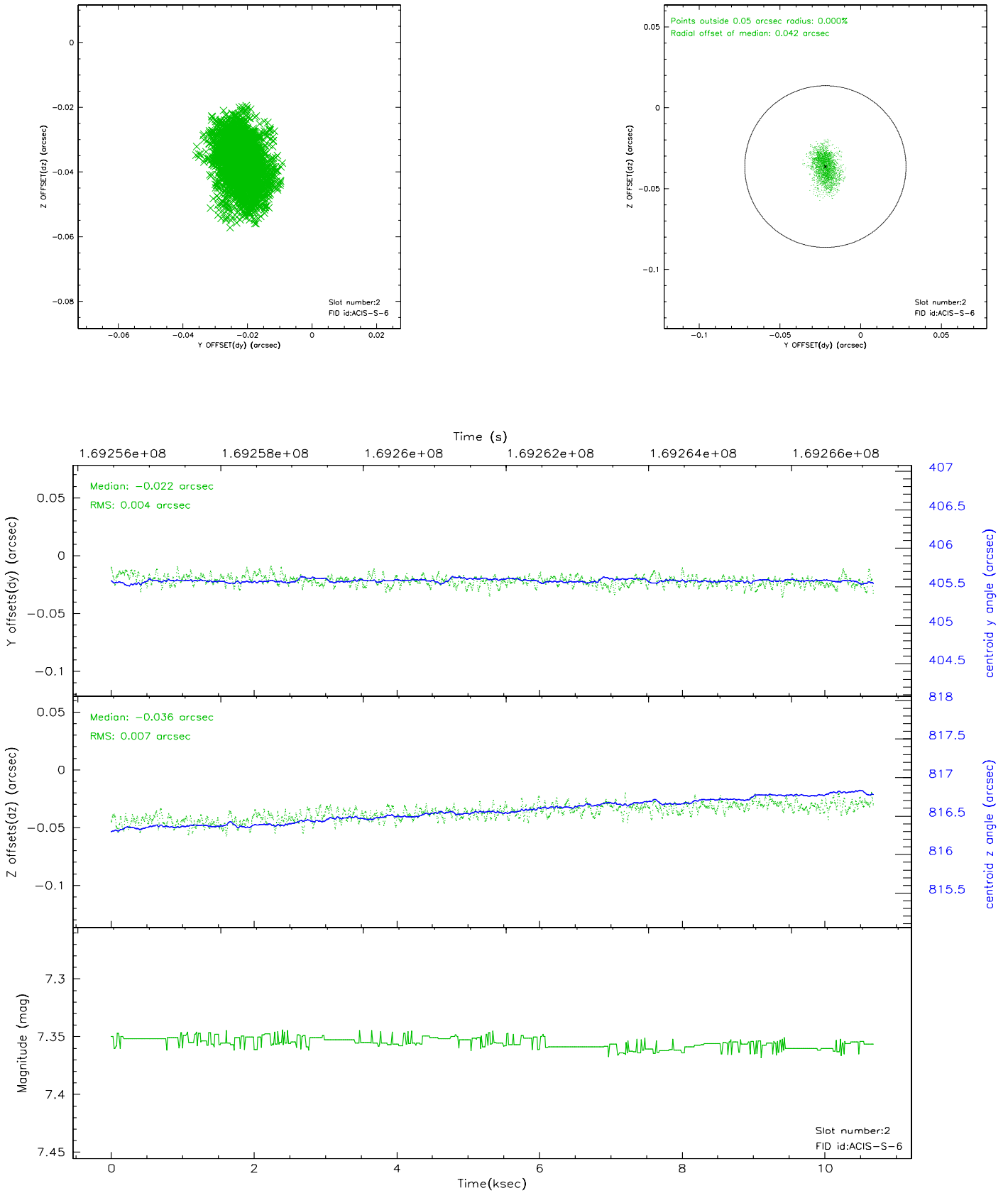
### 2.5.1 Slot 0



## 2.5.2 Slot 1



### 2.5.3 Slot 2





### 3 Point Sources

## A Summary

### A.1 Status

V&V Scientist	Jen Lauer
V&V Date (YYYY-MM-DD)	2006.08.13
V&V Edition	1
V&V Disposition and Status	OK
V&V Charge Time	10.687

### A.2 Comments