

V&V Reference Report

L2 ASCDS Version : 7.6.8

Observation 3825 - L2 Version 001
Chandra X-Ray Center

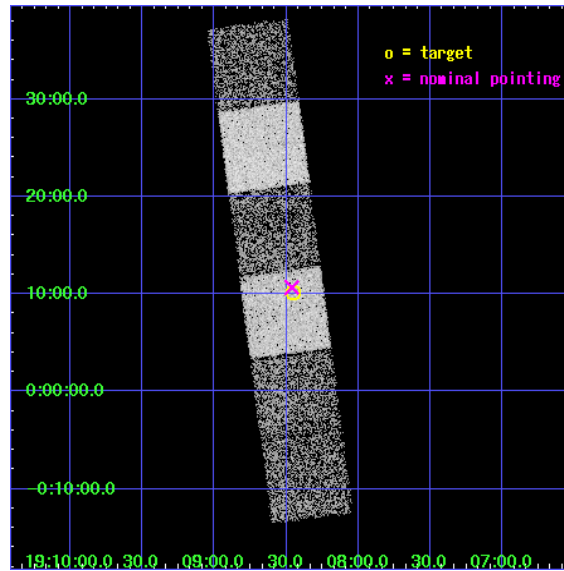
L2 Processing Date : Jul 22 2006

Contents

1	Front	2
2	OBI	3
2.1	OBI	3
2.1.1	Images	3
2.1.2	Bias	3
2.1.3	Parameters	4
2.1.4	Events	4
2.2	Compared Parameters	5
2.3	Aspect	6
2.4	Star Slots	9
2.4.1	Slot 3	9
2.4.2	Slot 4	10
2.4.3	Slot 5	11
2.4.4	Slot 6	12
2.4.5	Slot 7	13
2.5	FID Slots	14
2.5.1	Slot 0	14
2.5.2	Slot 1	15
2.5.3	Slot 2	16
3	Gratings	17
3.1	HEG Arm	17
3.2	MEG Arm	19
A	Summary	21
A.1	Status	21
A.2	Comments	21

1 Front

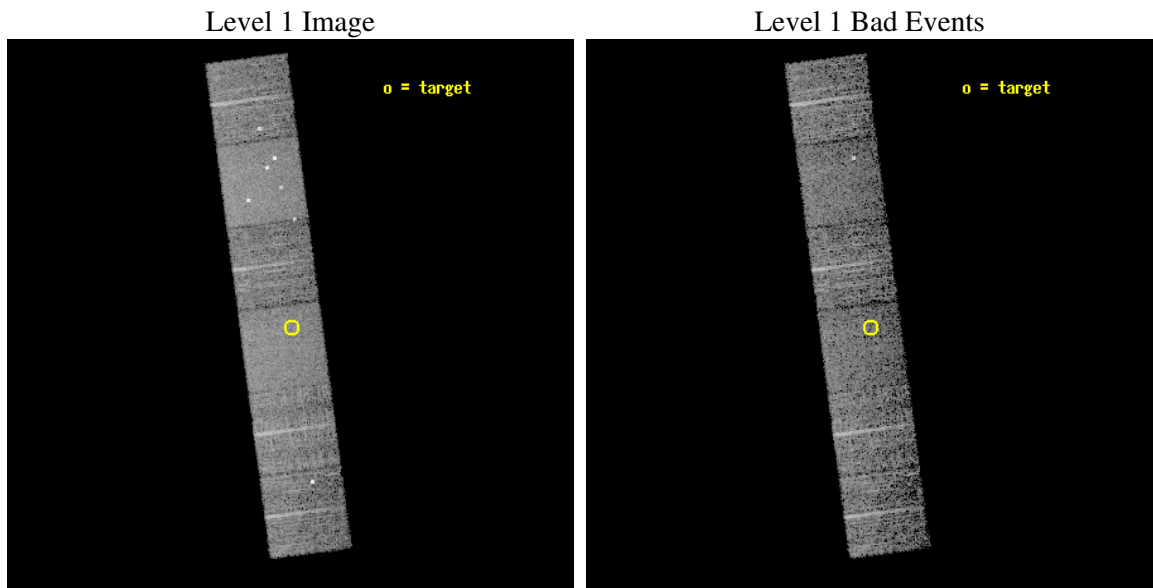
seq_num	400312
obs_id	3825
title	SNAPSHOT SURVEY OF FOUR LMXBS
observer	Prof. Deepto Chakrabarty
object	4U 1905+000
dtcycle	0
cycle	P
ra_targ	287.1125
dec_targ	0.168778
ra_nom	287.11540744854
dec_nom	0.17798108723868
roll_nom	82.395337545702
revision	2
ontime	4956.7999815345
livetime	4894.0339955417
ontime4	4956.7999815345
ontime5	4956.7999815345
ontime6	4956.7999815345
ontime7	4956.7999815345
ontime8	4956.7999815345
ontime9	4956.7999815345
l2events	47791



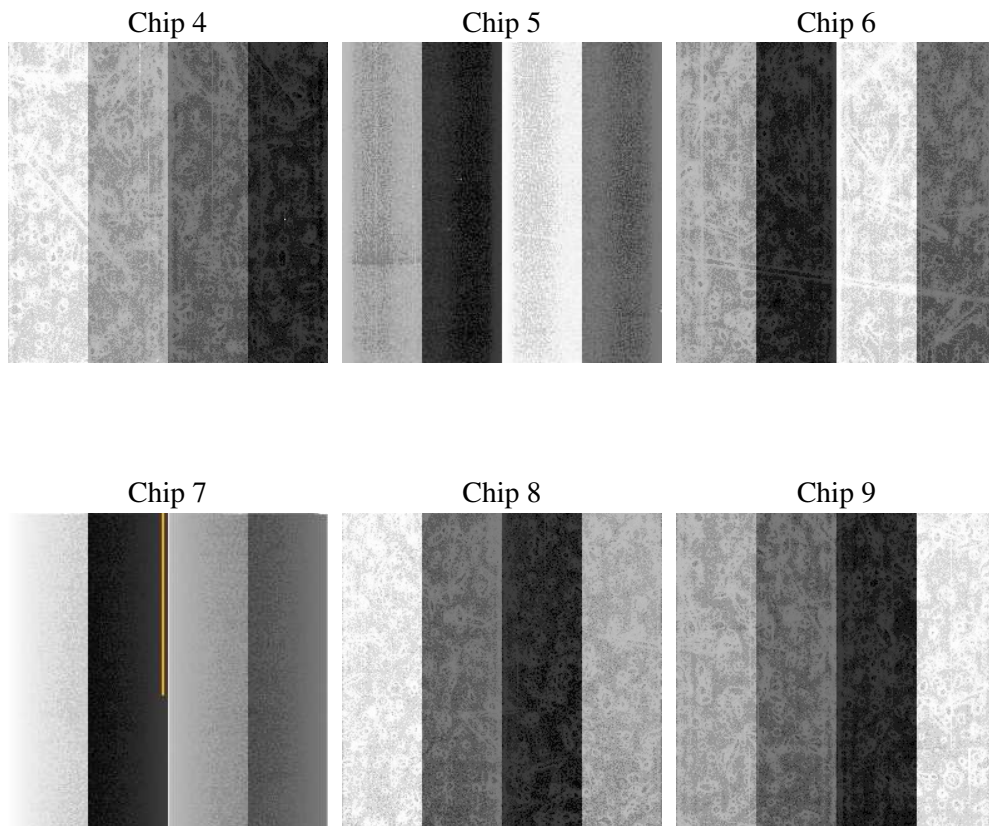
2 OBI

2.1 OBI

2.1.1 Images



2.1.2 Bias



2.1.3 Parameters

obi_num	0
ascdsver	7.6.8
caldbver	3.2.2
date	2006-07-22T13:35:28
revision	2

sched_exp_time	5000.000000
ontime	4961.9690088332
ontime4	4961.9689788818
ontime5	4961.9690088332
ontime6	4961.9689788818
ontime7	4961.9690088332
ontime8	4961.9689788818
ontime9	4965.2099989951
l1events	233396

2.1.4 Events

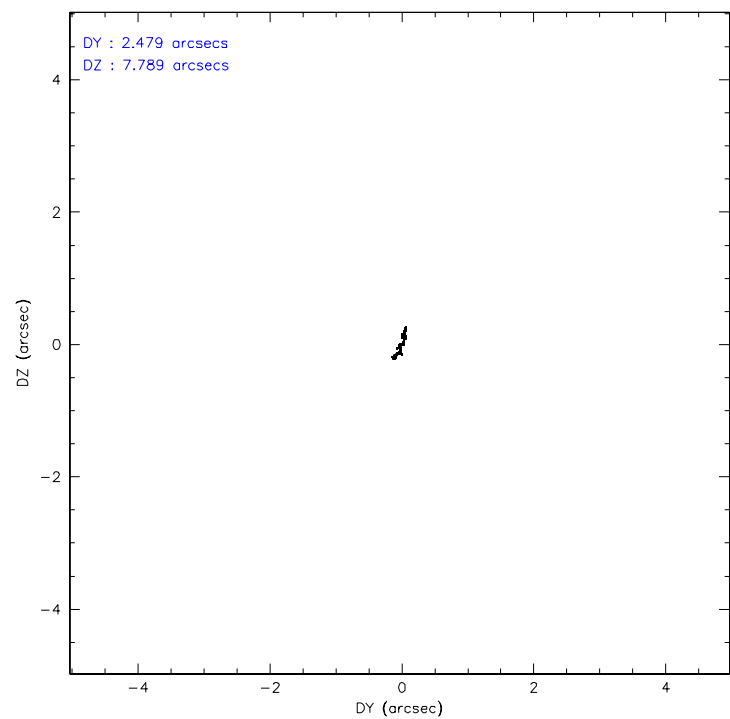
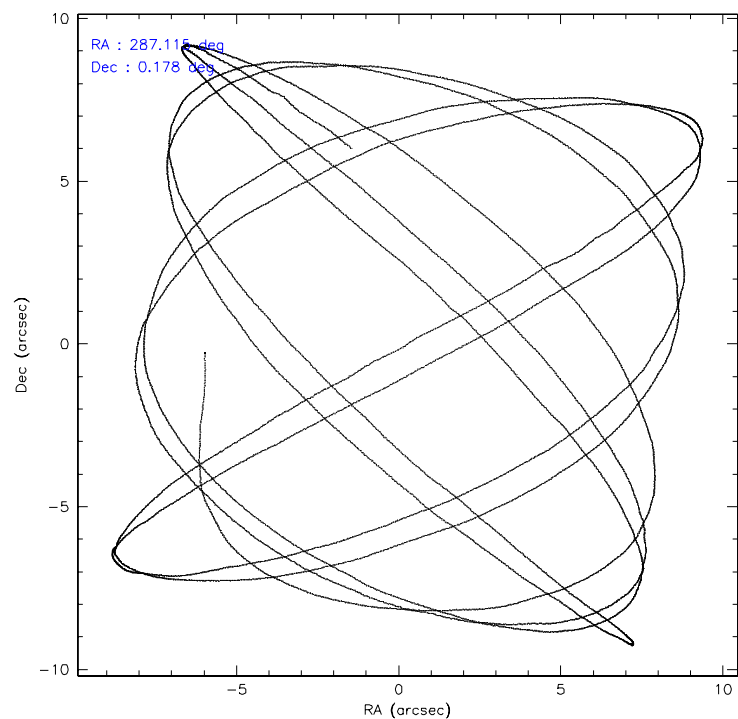
	ccd 4	ccd 5	ccd 6	ccd 7	ccd 8	ccd 9
level 1 events	36075	49086	33230	42090	40471	32444
rejected events	31381	26740	29543	26021	31854	27396
rejected %	86%	54%	88%	61%	78%	84%

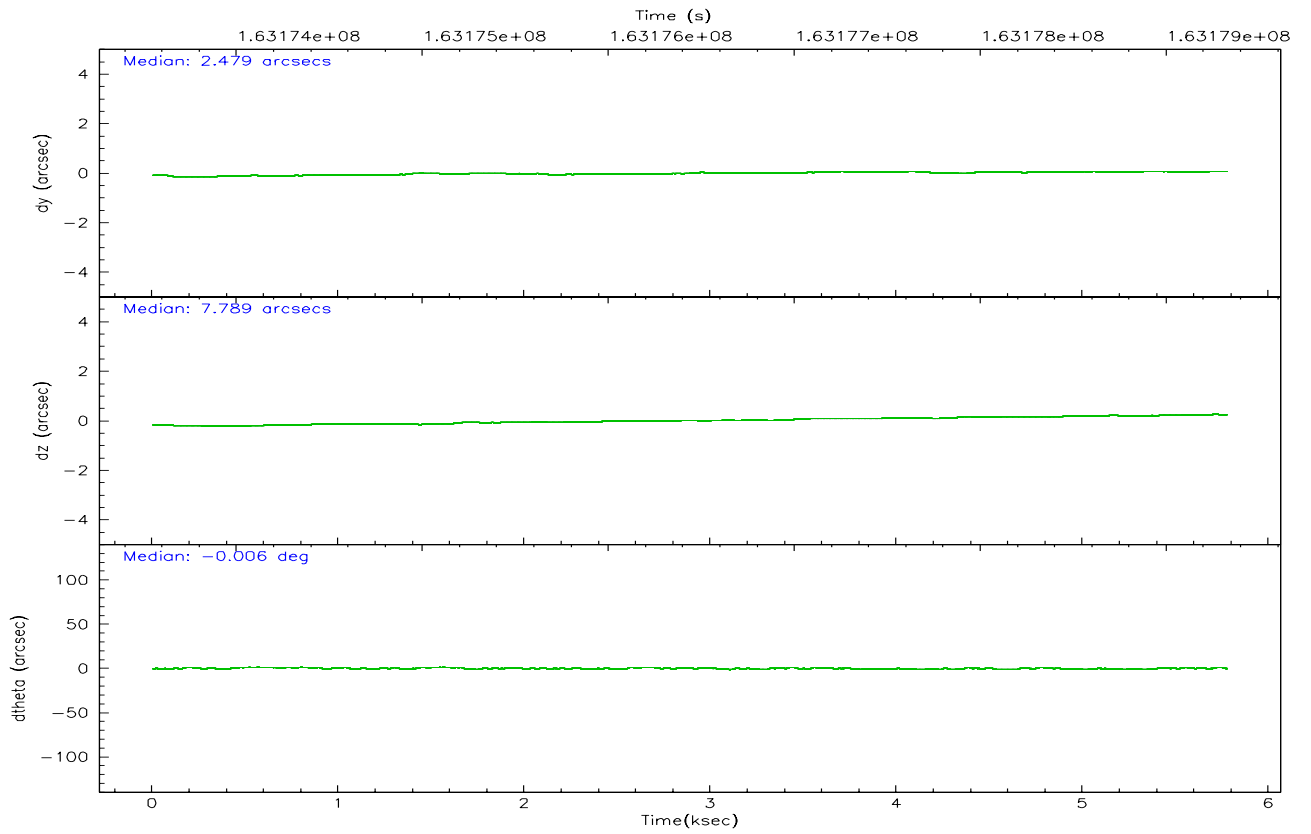
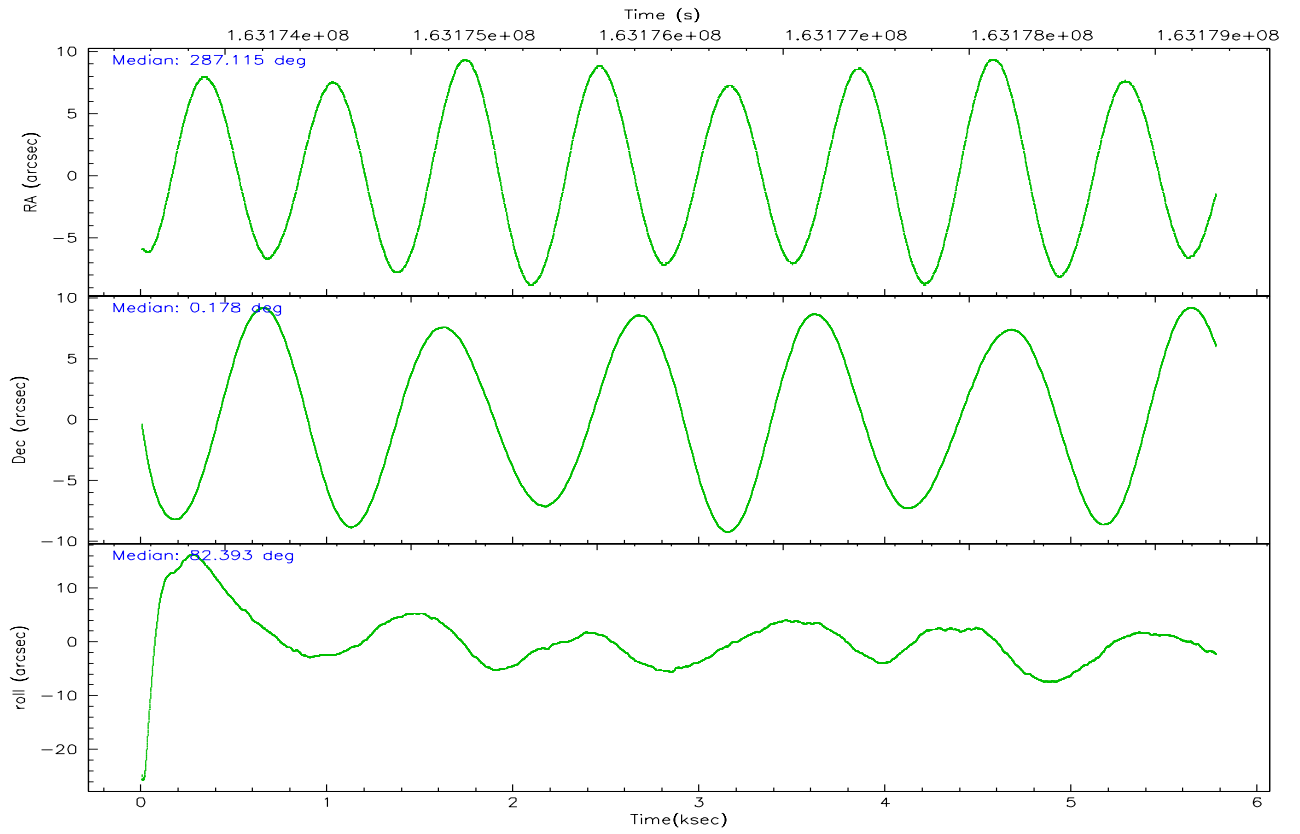
	ccd 4	ccd 5	ccd 6	ccd 7	ccd 8	ccd 9
grade 0 events	2442	3510	1461	865	2699	2838
	6%	7%	4%	2%	6%	8%
grade 1 events	28	294	25	29	33	20
	0%	0%	0%	0%	0%	0%
grade 2 events	838	6471	753	4033	1886	708
	2%	13%	2%	9%	4%	2%
grade 3 events	399	473	365	792	910	416
	1%	0%	1%	1%	2%	1%
grade 4 events	397	437	379	780	848	347
	1%	0%	1%	1%	2%	1%
grade 5 events	1347	2374	1426	2809	1827	1514
	3%	4%	4%	6%	4%	4%
grade 6 events	619	11468	732	9609	2275	744
	1%	23%	2%	22%	5%	2%
grade 7 events	30005	24059	28089	23173	29993	25857
	83%	49%	84%	55%	74%	79%

2.2 Compared Parameters

Parameter	Planned	Actual	Parameter	Planned	Actual
Instrument	ACIS	ACIS	Obspar format version number	6	6
Detector	ACIS-456789	ACIS-456789	Obspar file type	PREDICTED	ACTUAL
Grating	HETG	HETG	Obspar update status	NONE	UPDATED
Data mode	FAINT	FAINT	On-chip summing requested	N	N
Observation mode	POINTING	POINTING	Subarray requested	NONE	NONE
Pointing RA	287.126156	287.1154074485425	Alternating exposures requested	N	N
Pointing Dec	0.152959	0.1779810872386786	Primary exposure time	0.000000	3.2
Pointing Roll	82.238764	82.39533754570223			
SIM focus pos (mm)	-0.684267	-0.6828225247311905			
SIM defocus (mm)	0	0.001444936568705701			
SIM translation stage pos (mm)	-187.132523	-187.1228876879999			
SIM translation stage offset (mm)	-3	-3.009634895007935			
Observation start time	163174332.184000	163173076.00653			
Observation start date	2003-03-04T14:11:08	2003-03-04T13:51:16			
Observation end time	163179332.184000	163179966.05682			
Observation end date	2003-03-04T15:34:28	2003-03-04T15:46:06			
Read mode	TIMED	TIMED			

2.3 Aspect



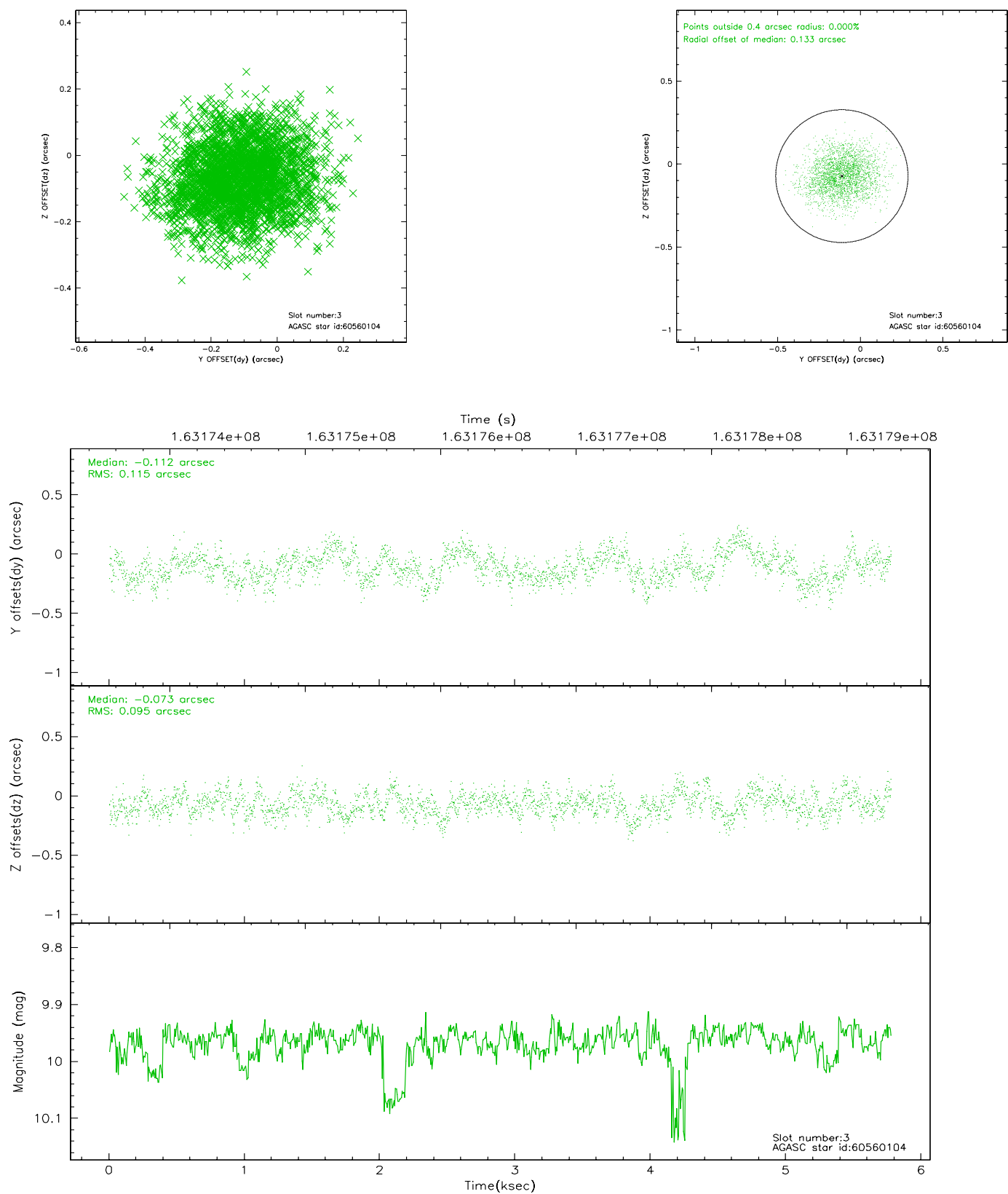


Slot Statistics

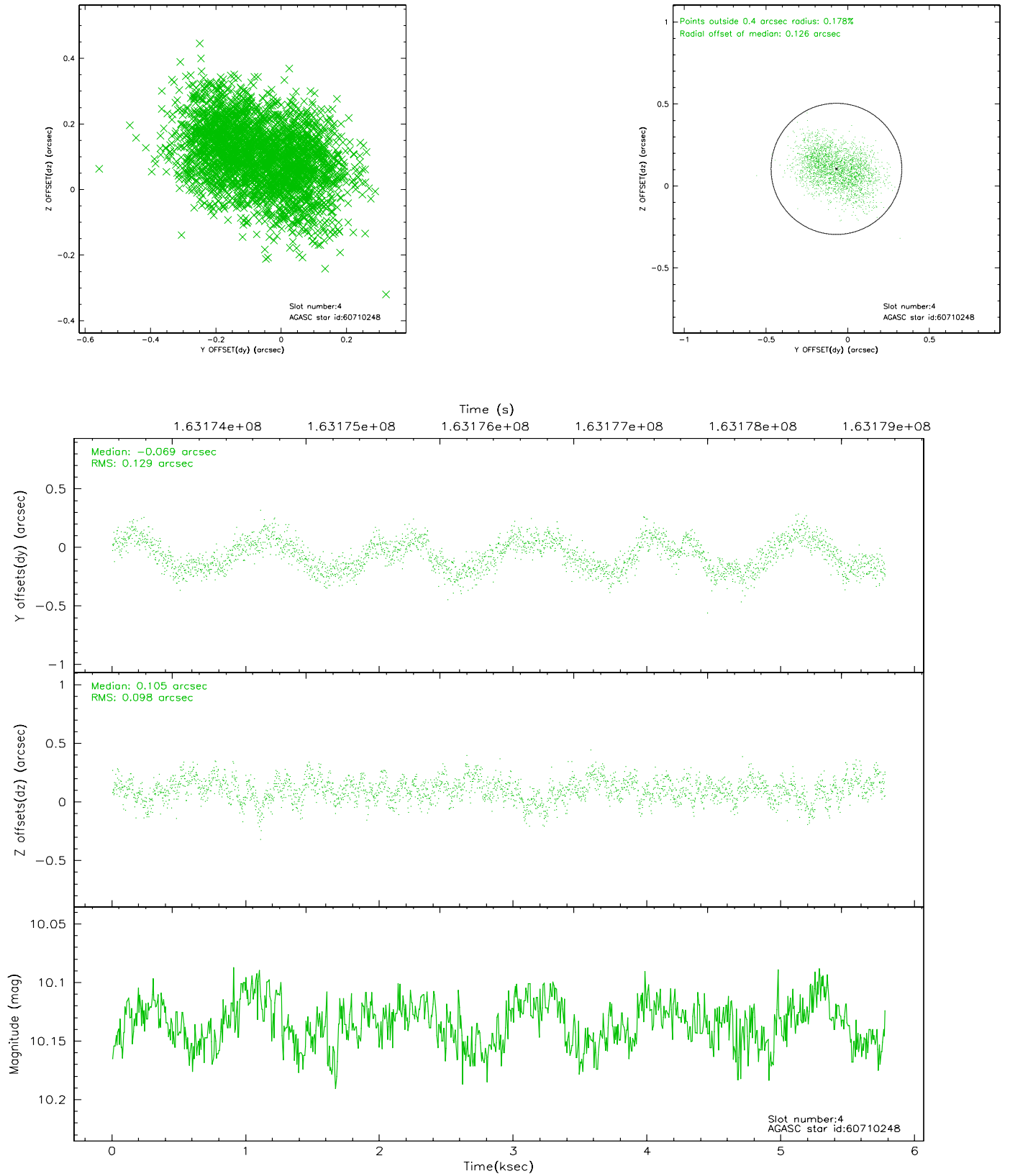
slot	status	id	mag	n_pts	med_dy	med_dz	dr1	dr2	ra	dec	mean_y	mean_z
0	FID	ACIS-S-1	7.18	1409	-0.012	0.053	0.012	0.019	0.000000	0.000000	941.15	-1786.69
1	FID	ACIS-S-4	7.19	1409	-0.047	-0.026	0.010	0.015	0.000000	0.000000	2159.08	116.29
2	FID	ACIS-S-5	7.23	1409	0.033	-0.014	0.007	0.012	0.000000	0.000000	-1806.37	111.01
3	GUIDE	60560104	9.97	2813	-0.112	-0.073	0.161	0.258	286.743677	0.859001	2332.49	1707.55
4	GUIDE	60710248	10.14	2816	-0.069	0.105	0.174	0.269	287.369185	0.548154	1528.77	-673.91
5	GUIDE	60710592	9.37	2815	0.060	-0.187	0.103	0.164	287.035703	0.265770	359.12	377.10
6	GUIDE	672270944	6.81	2817	0.095	0.094	0.063	0.100	287.464983	-0.428115	-1907.60	-1490.94
7	GUIDE	672281216	9.30	2815	0.017	0.066	0.086	0.139	287.454836	-0.067927	-628.57	-1280.23

2.4 Star Slots

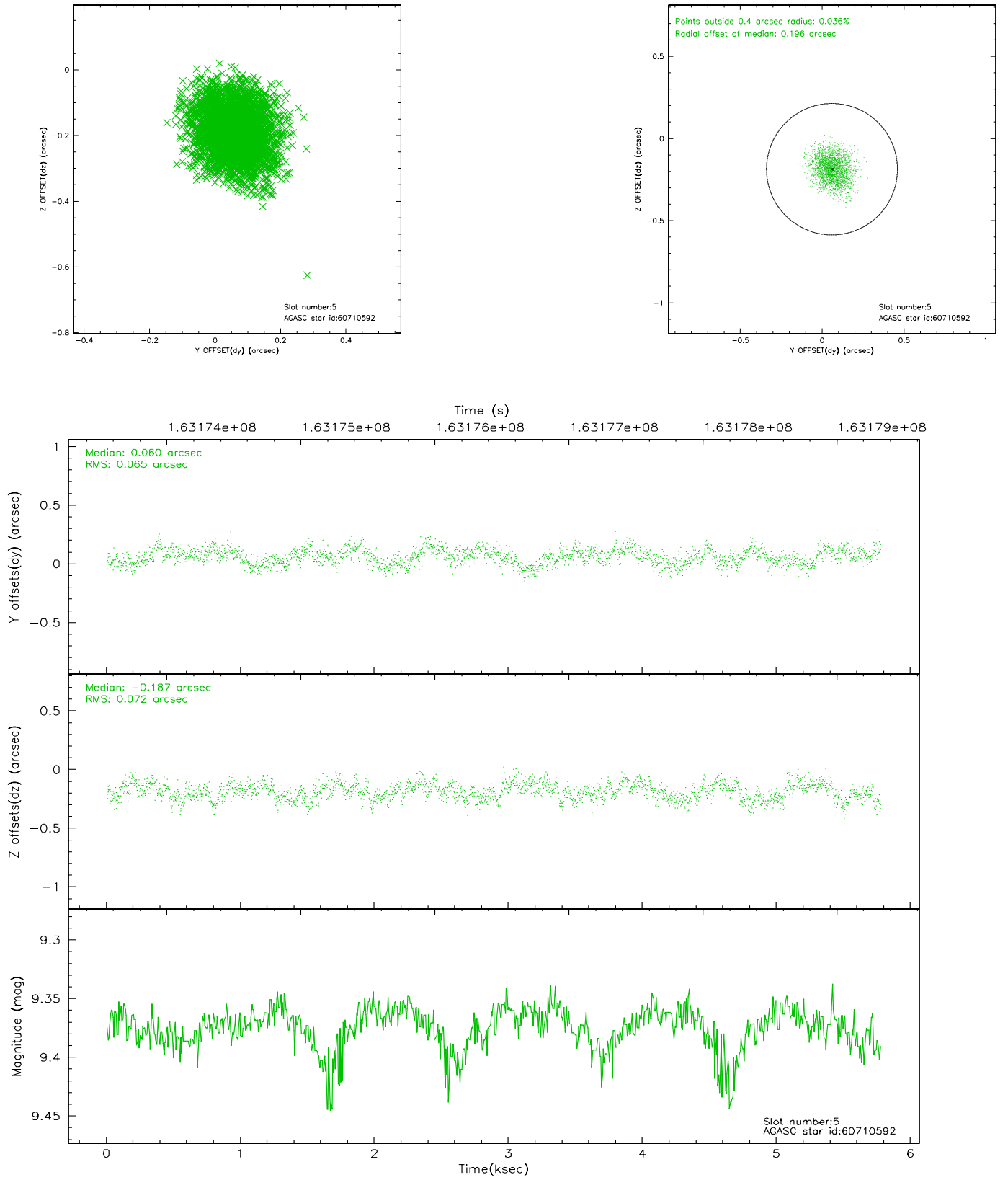
2.4.1 Slot 3



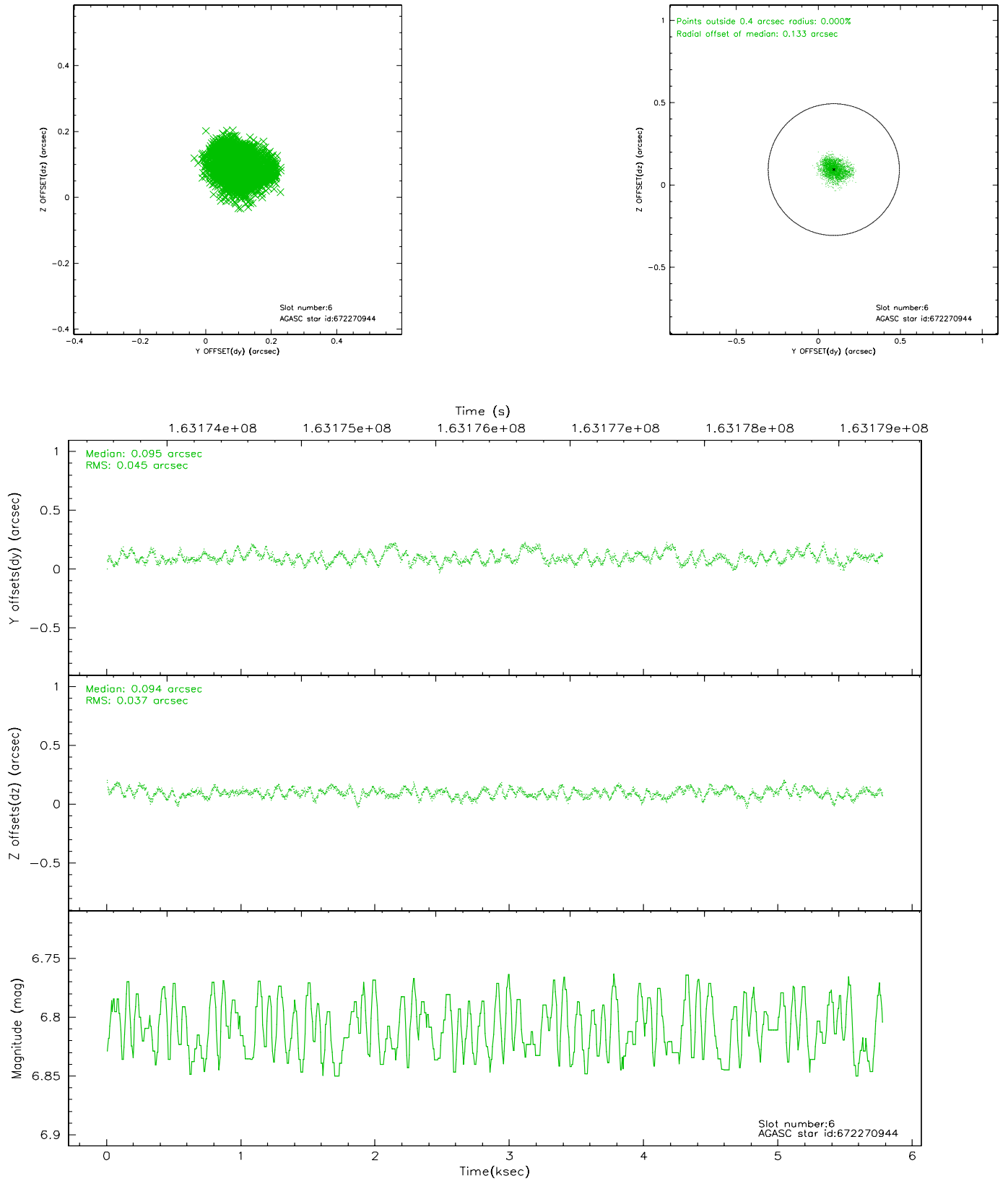
2.4.2 Slot 4



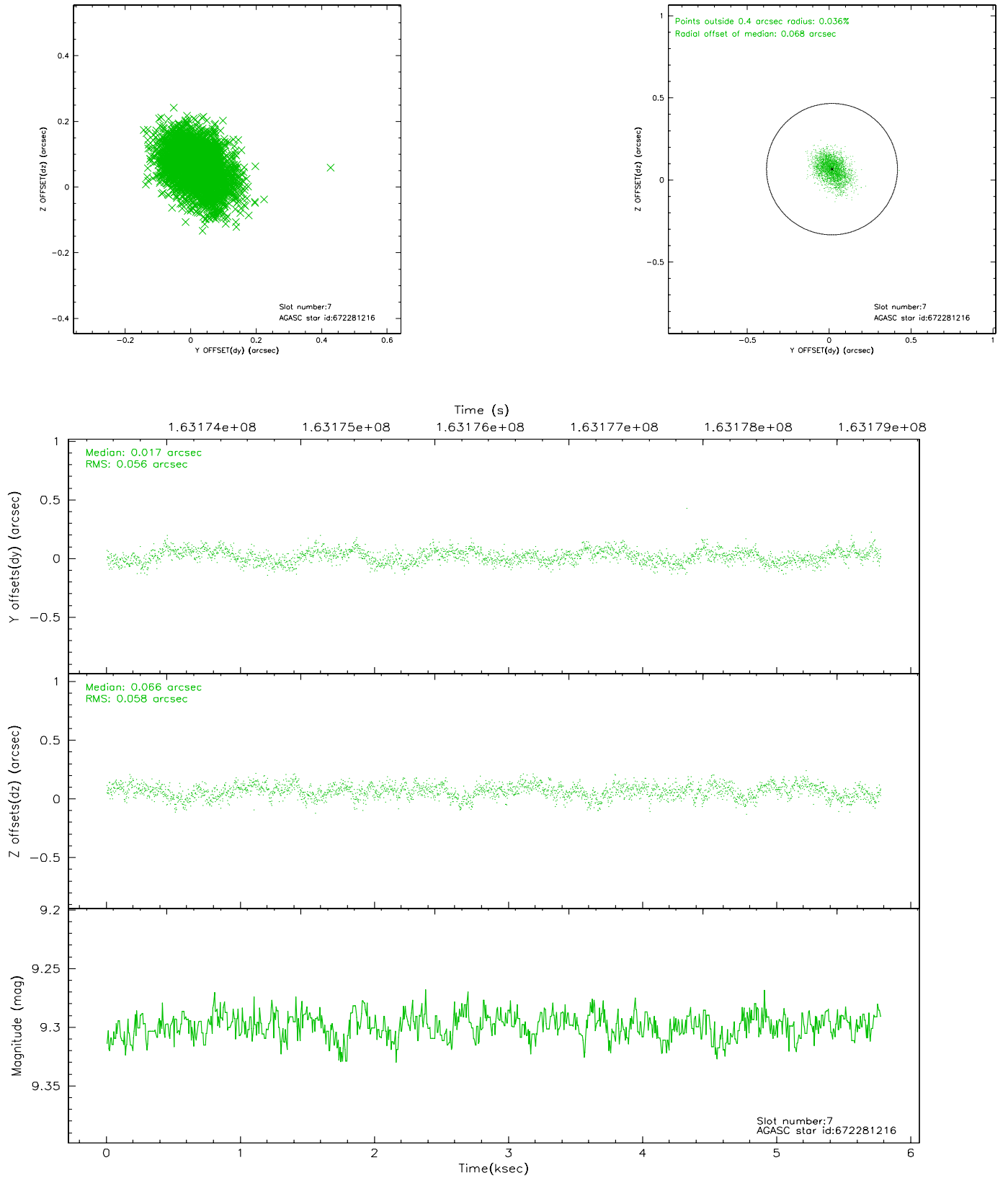
2.4.3 Slot 5



2.4.4 Slot 6

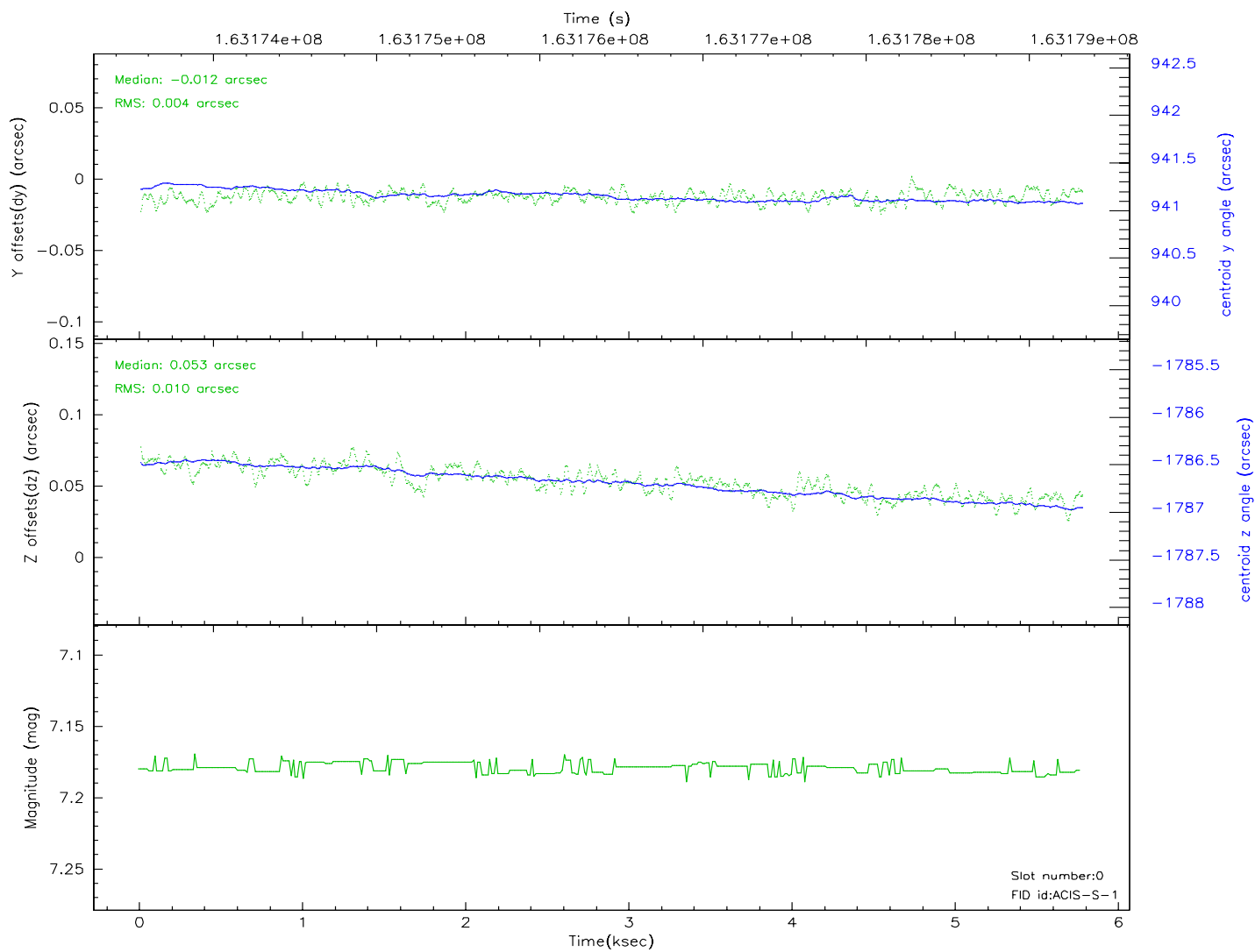
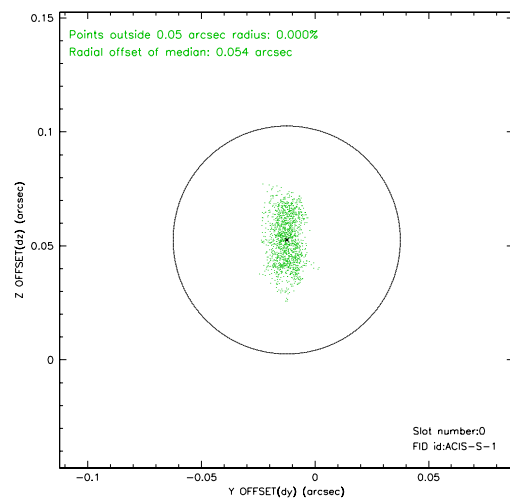
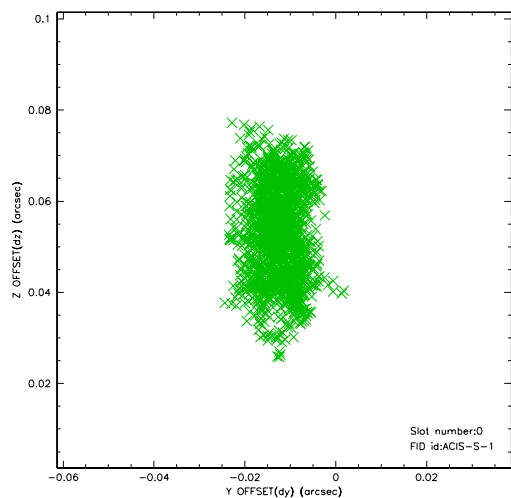


2.4.5 Slot 7

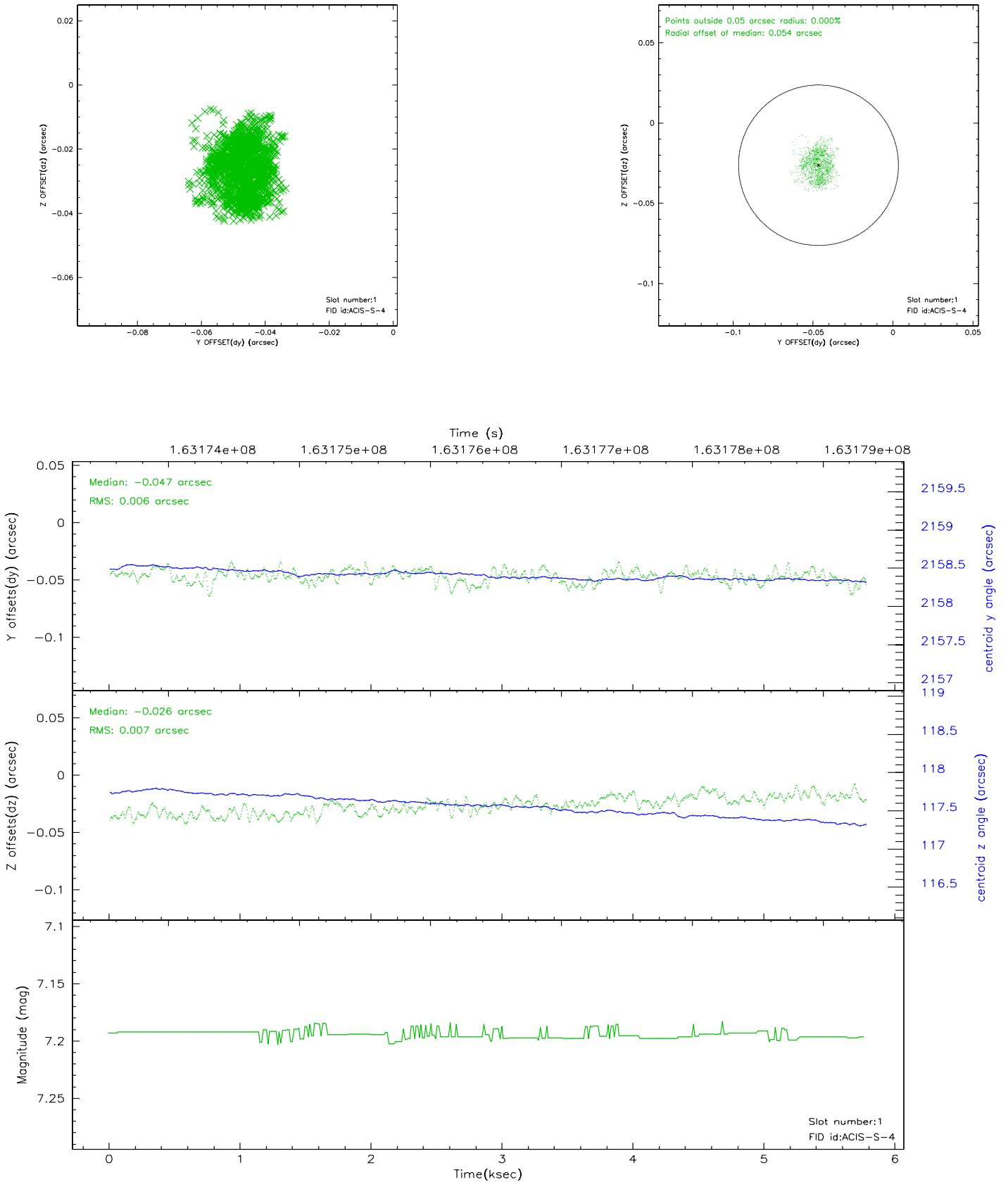


2.5 FID Slots

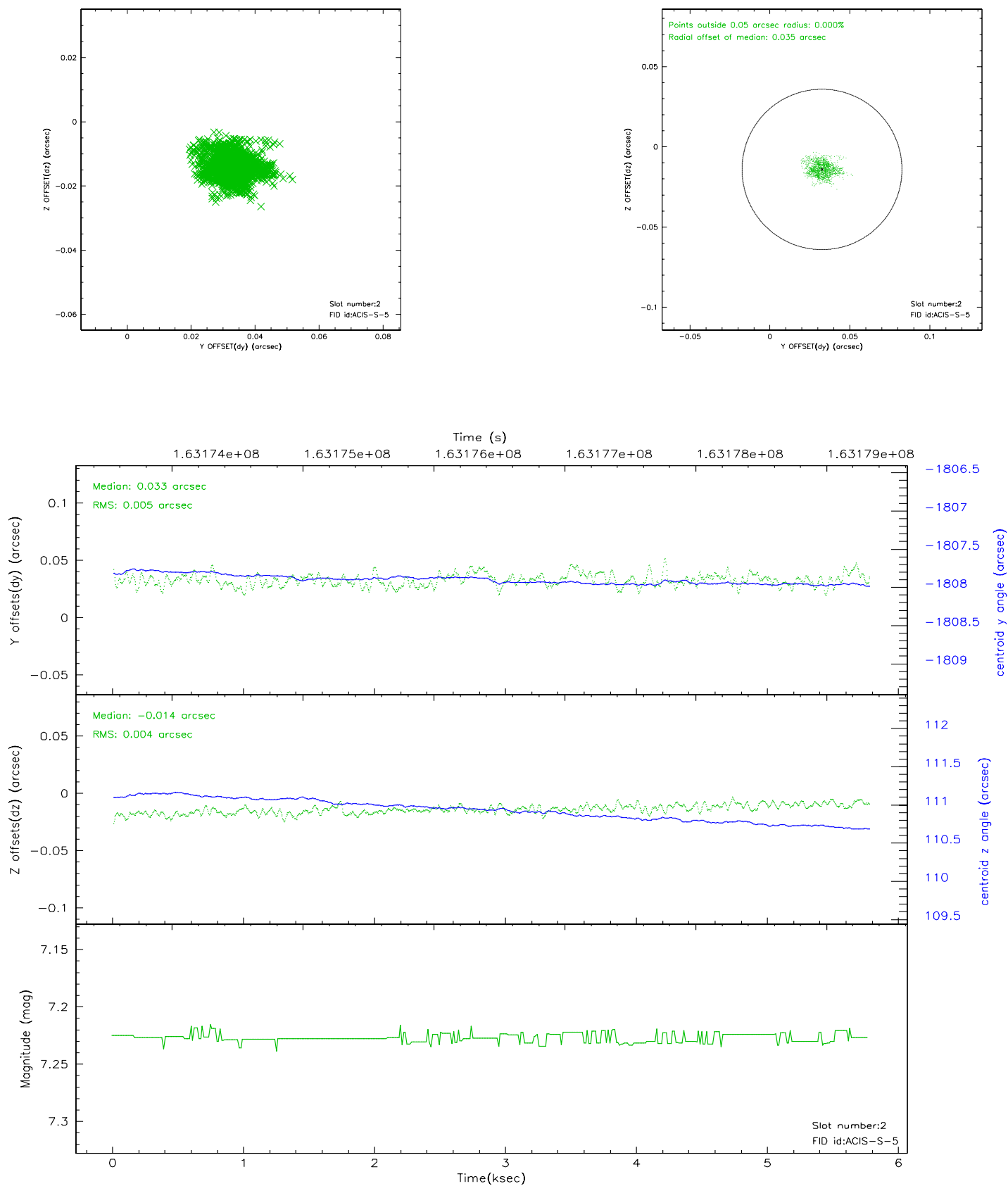
2.5.1 Slot 0



2.5.2 Slot 1

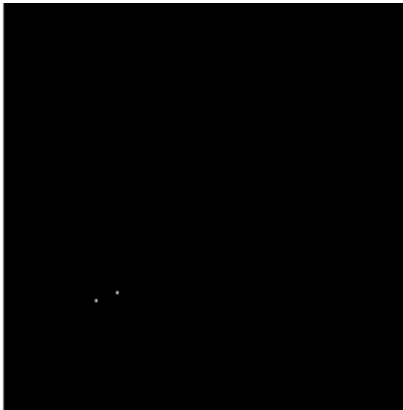


2.5.3 Slot 2

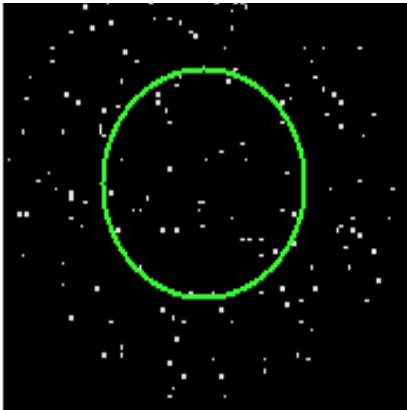


3 Gratings

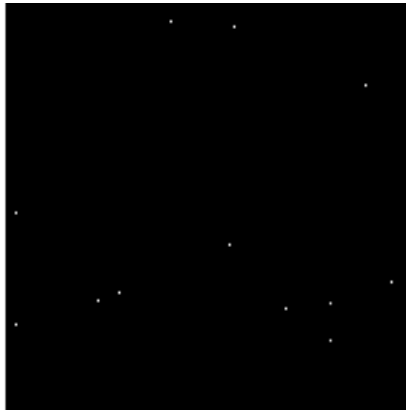
3.1 HEG Arm



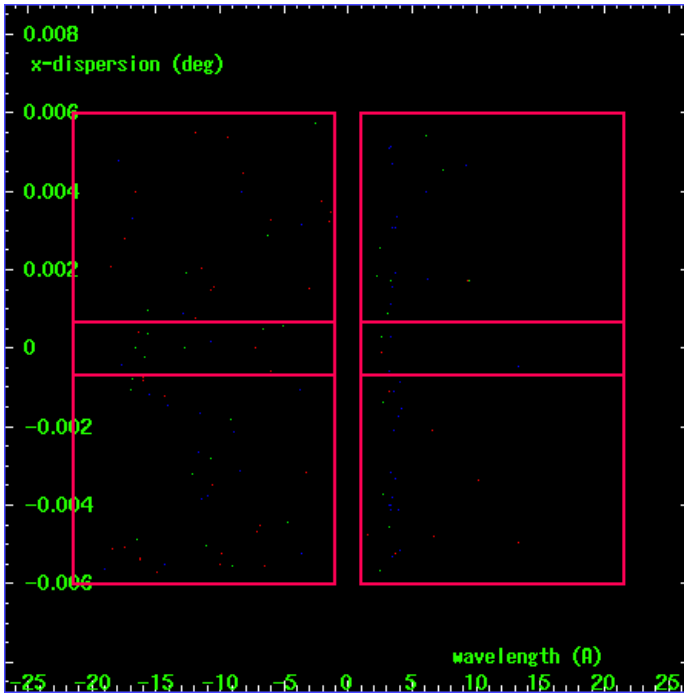
HEG Order Sort 123



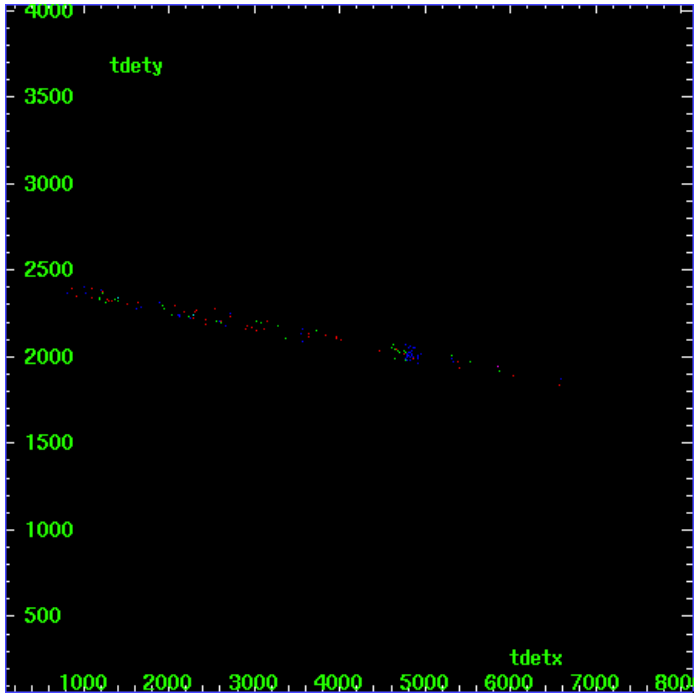
HEG Zero Order



HEG Order Sort ALL

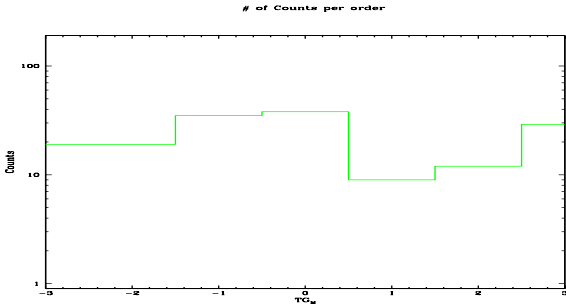


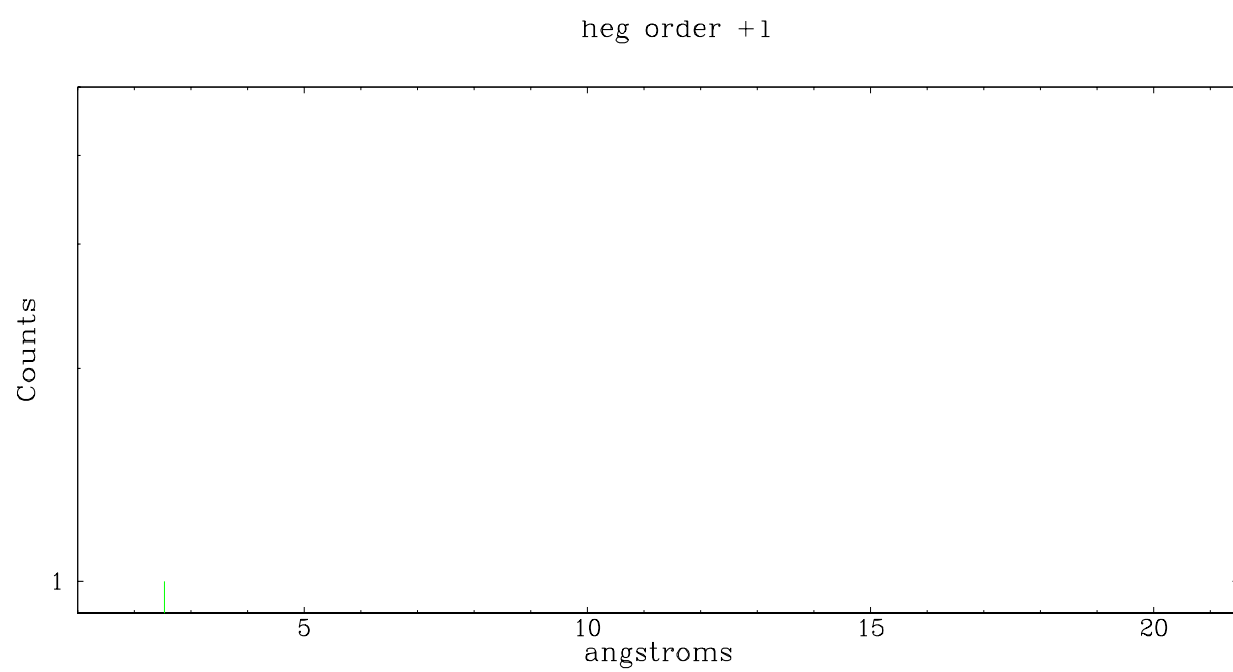
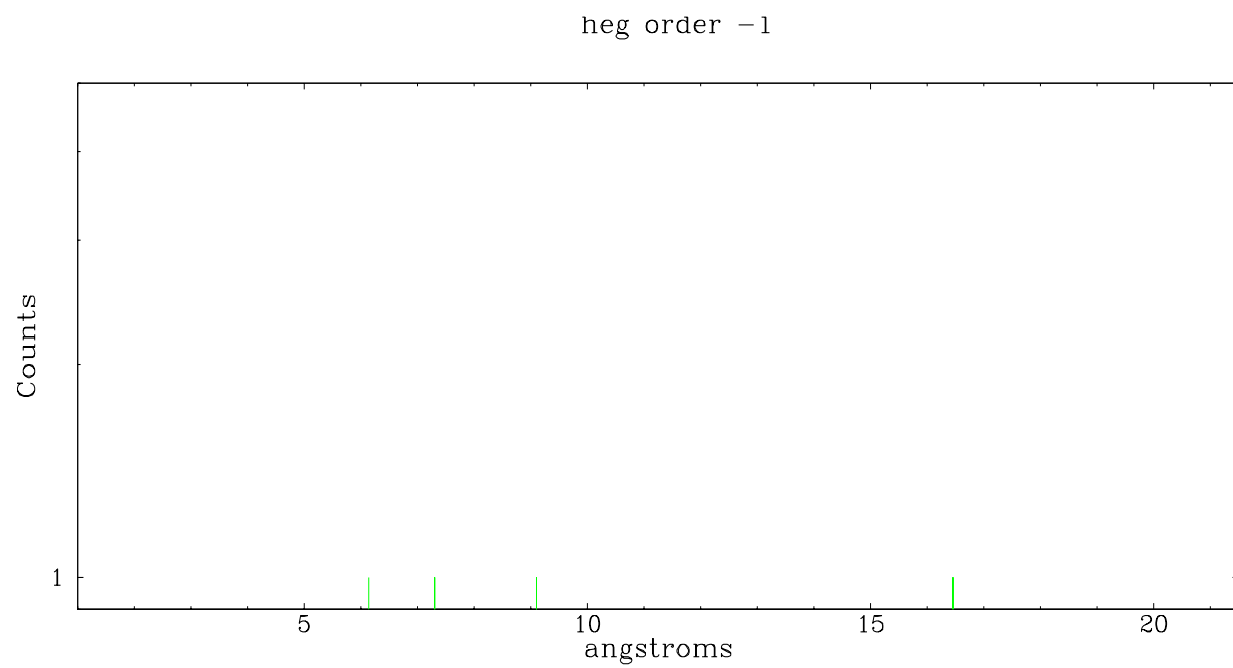
Spot Image HEG



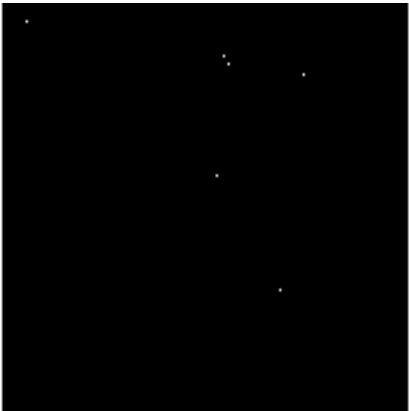
Full Detector HEG

	order -3	order -2	order -1	order 0	order 1	order 2	order 3
Events	19	19	35	38	9	12	29

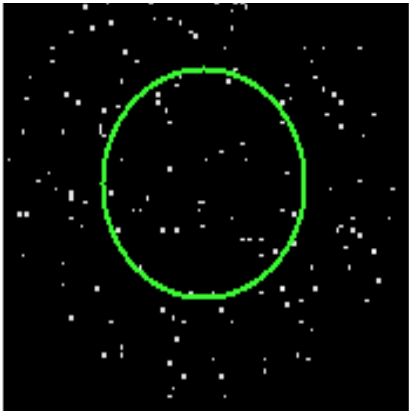




3.2 MEG Arm



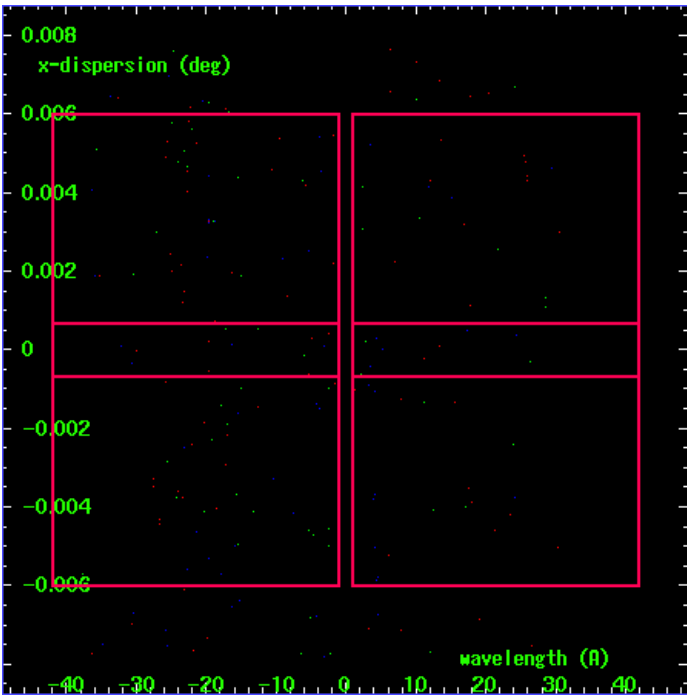
MEG Order Sort 123



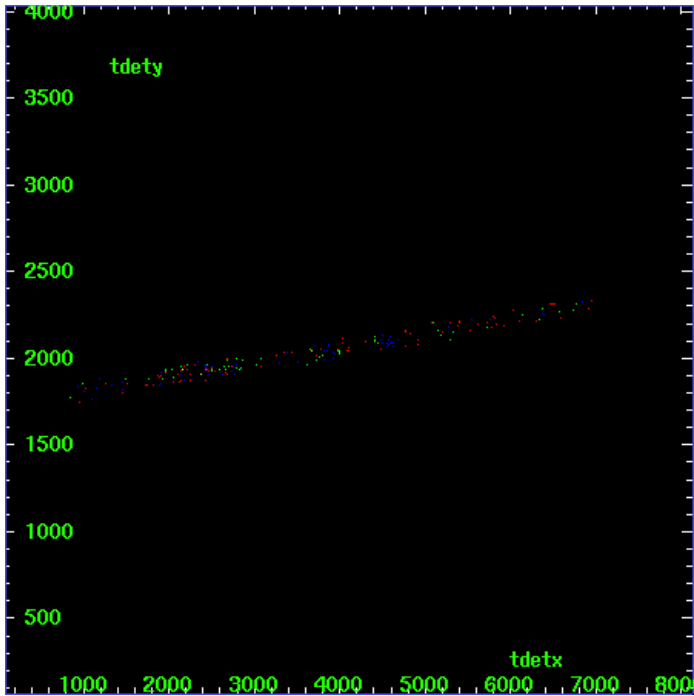
MEG Zero Order



MEG Order Sort ALL

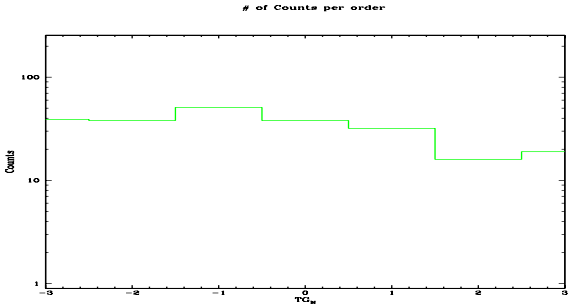


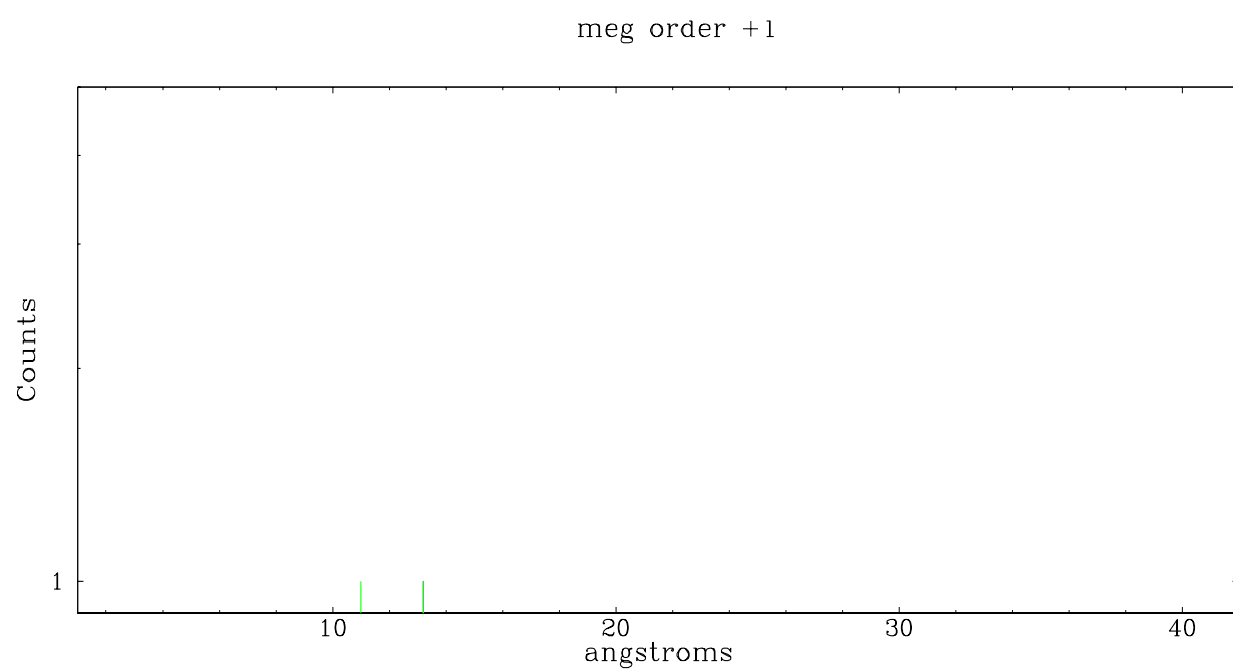
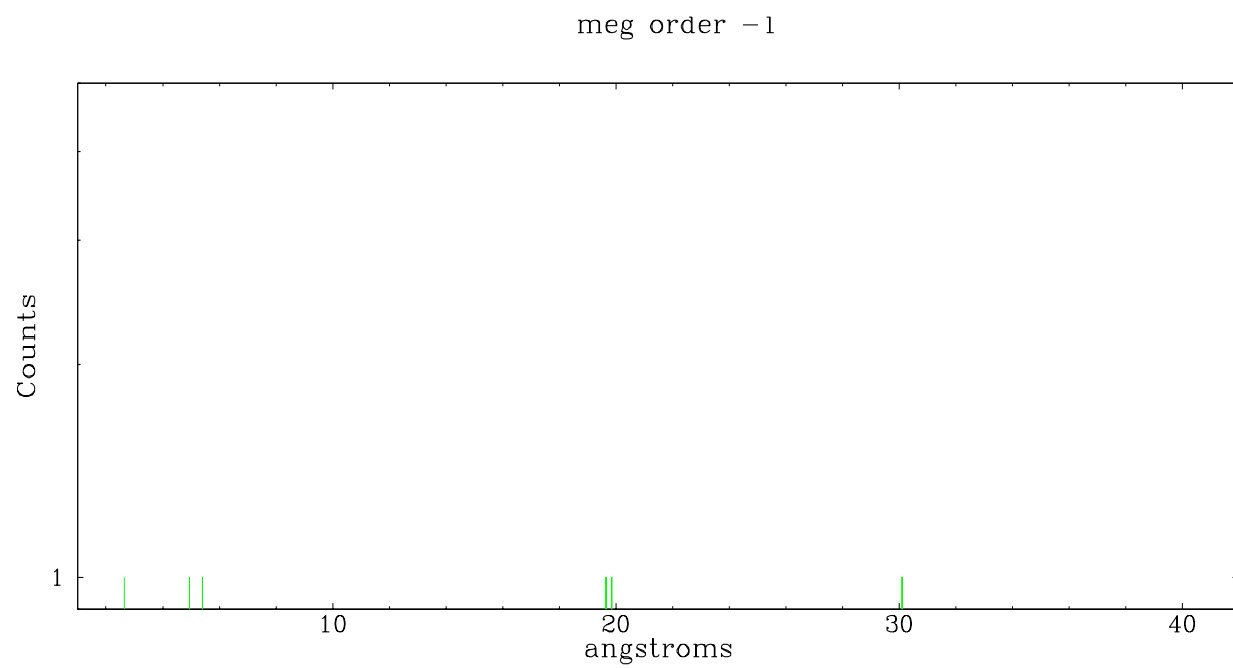
Spot Image MEG



Full Detector MEG

	order -3	order -2	order -1	order 0	order 1	order 2	order 3
Events	39	38	51	38	32	16	19





A Summary

A.1 Status

V&V Scientist	Beth Sundheim
V&V Date (YYYY-MM-DD)	2006.07.23
V&V Edition	1
V&V Disposition and Status	OK
V&V Charge Time	4.956

A.2 Comments