

# V&V Reference Report

## L2 ASCDS Version : 7.6.8

Observation 3819 - L2 Version 001  
Chandra X-Ray Center

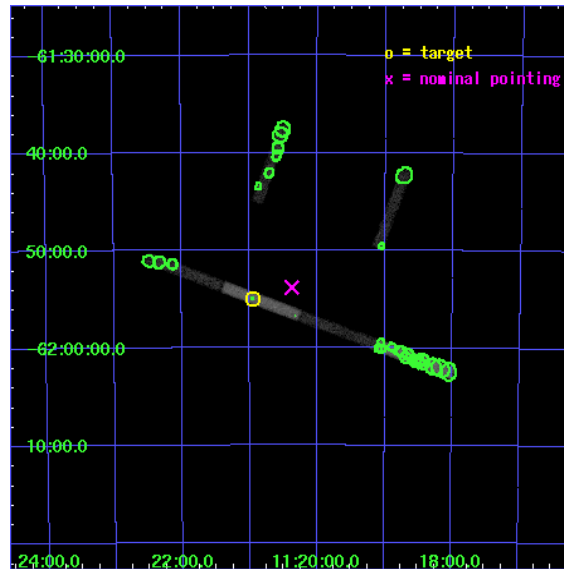
L2 Processing Date : Jul 7 2006

## Contents

<b>1</b>	<b>Front</b>	<b>2</b>
<b>2</b>	<b>OBI</b>	<b>3</b>
2.1	OBI . . . . .	3
2.1.1	Images . . . . .	3
2.1.2	Bias . . . . .	3
2.1.3	Parameters . . . . .	4
2.1.4	Events . . . . .	4
2.2	Compared Parameters . . . . .	5
2.3	Aspect . . . . .	6
2.4	Star Slots . . . . .	9
2.4.1	Slot 3 . . . . .	9
2.4.2	Slot 4 . . . . .	10
2.4.3	Slot 5 . . . . .	11
2.4.4	Slot 6 . . . . .	12
2.4.5	Slot 7 . . . . .	13
2.5	FID Slots . . . . .	14
2.5.1	Slot 0 . . . . .	14
2.5.2	Slot 1 . . . . .	15
2.5.3	Slot 2 . . . . .	16
<b>3</b>	<b>Point Sources</b>	<b>17</b>
<b>A</b>	<b>Summary</b>	<b>18</b>
A.1	Status . . . . .	18
A.2	Comments . . . . .	18

# 1 Front

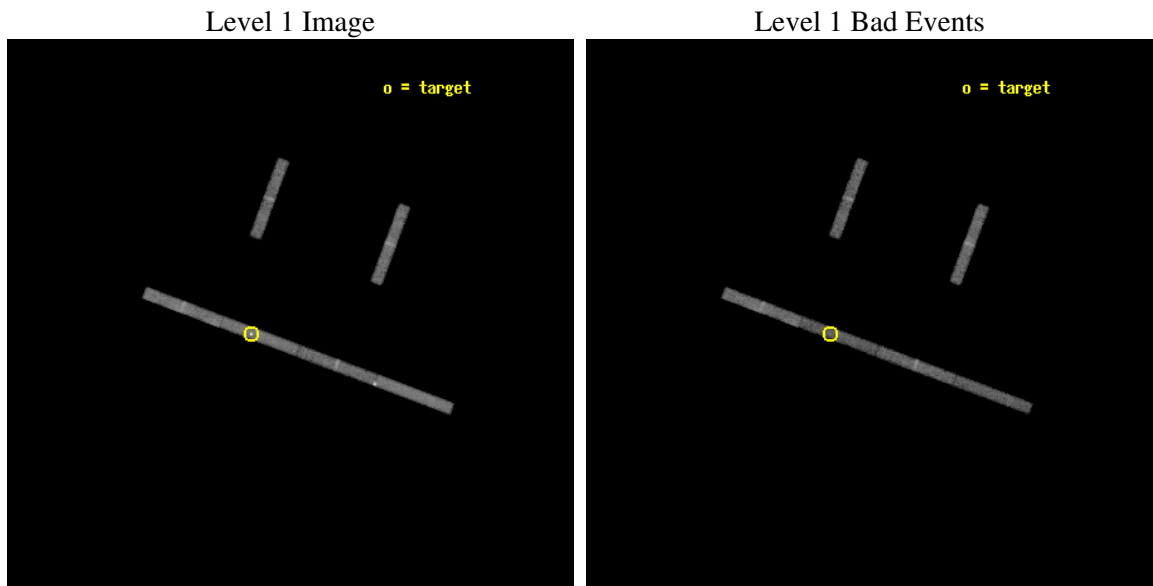
seq_num	400306
obs_id	3819
title	QUIESCENT EMISSION FROM TRANSIENT ACCRETION-POWERED PULSARS
observer	PROF. LARS BILDSTEN
object	A1118-616
dtcycle	0
cycle	P
ra_targ	170.238333
dec_targ	-61.91675
ra_nom	170.09393158401
dec_nom	-61.897002694991
roll_nom	200.46347413323
revision	2
ontime	19605.353505731
livetime	18519.577153745
ontime2	19605.353505731
ontime3	19606.0945158
ontime5	19605.353505731
ontime6	19605.353505731
ontime7	19605.353505731
ontime8	19605.353505731
l2events	38022



## 2 OBI

### 2.1 OBI

#### 2.1.1 Images



#### 2.1.2 Bias

Chip 2

Chip 3

Chip 5



Chip 6

Chip 7

Chip 8



### 2.1.3 Parameters

obi_num	1
ascdsver	7.6.8
caldbver	3.2.2
date	2006-07-07T13:19:37
revision	2

sched_exp_time	19100.000000
ontime	19609.163088828
ontime2	19609.163088828
ontime3	19609.904098898
ontime5	19609.163088828
ontime6	19609.163088828
ontime7	19609.163088828
ontime8	19609.163088828
l1events	149733

### 2.1.4 Events

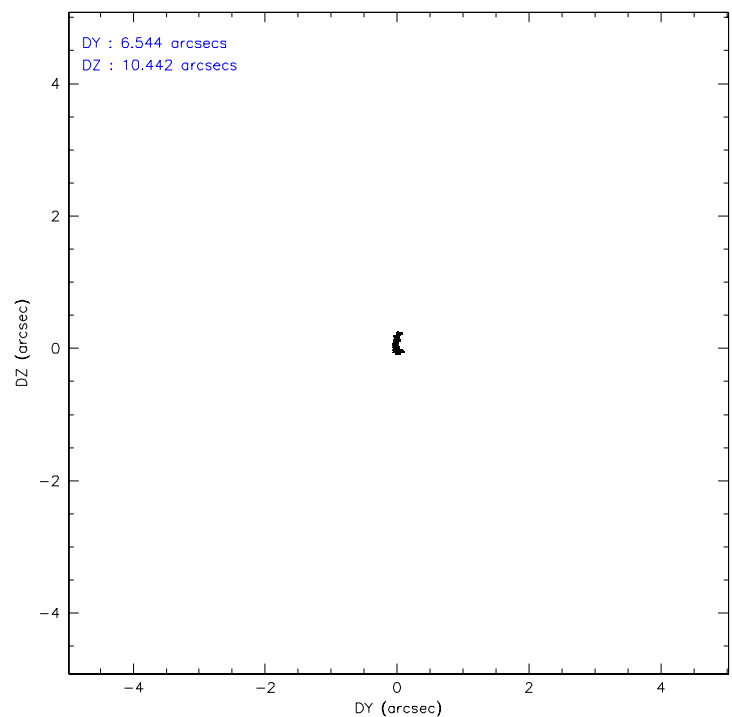
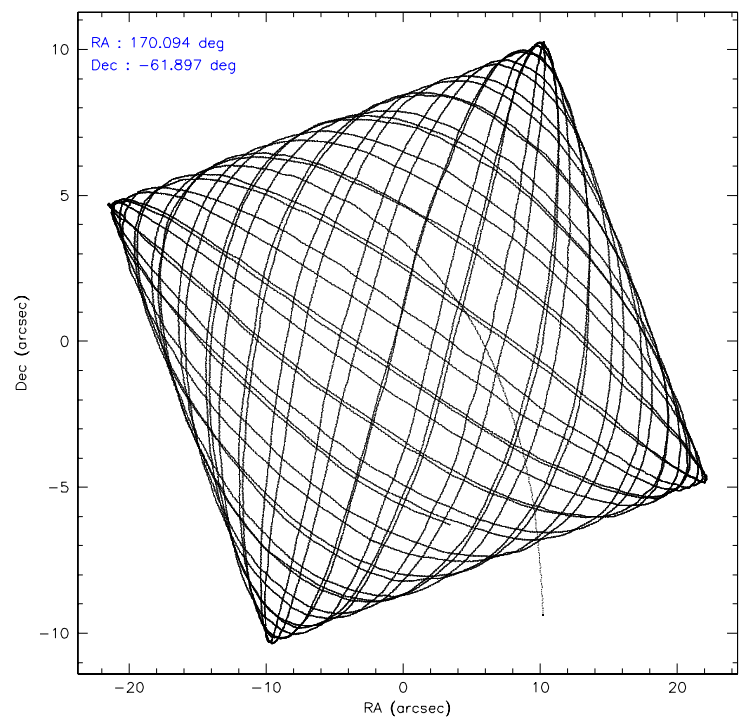
	ccd 2	ccd 3	ccd 5	ccd 6	ccd 7	ccd 8
level 1 events	22792	19701	28293	20711	29143	29093
rejected events	20118	17222	13215	18107	12773	23483
rejected %	88%	87%	46%	87%	43%	80%

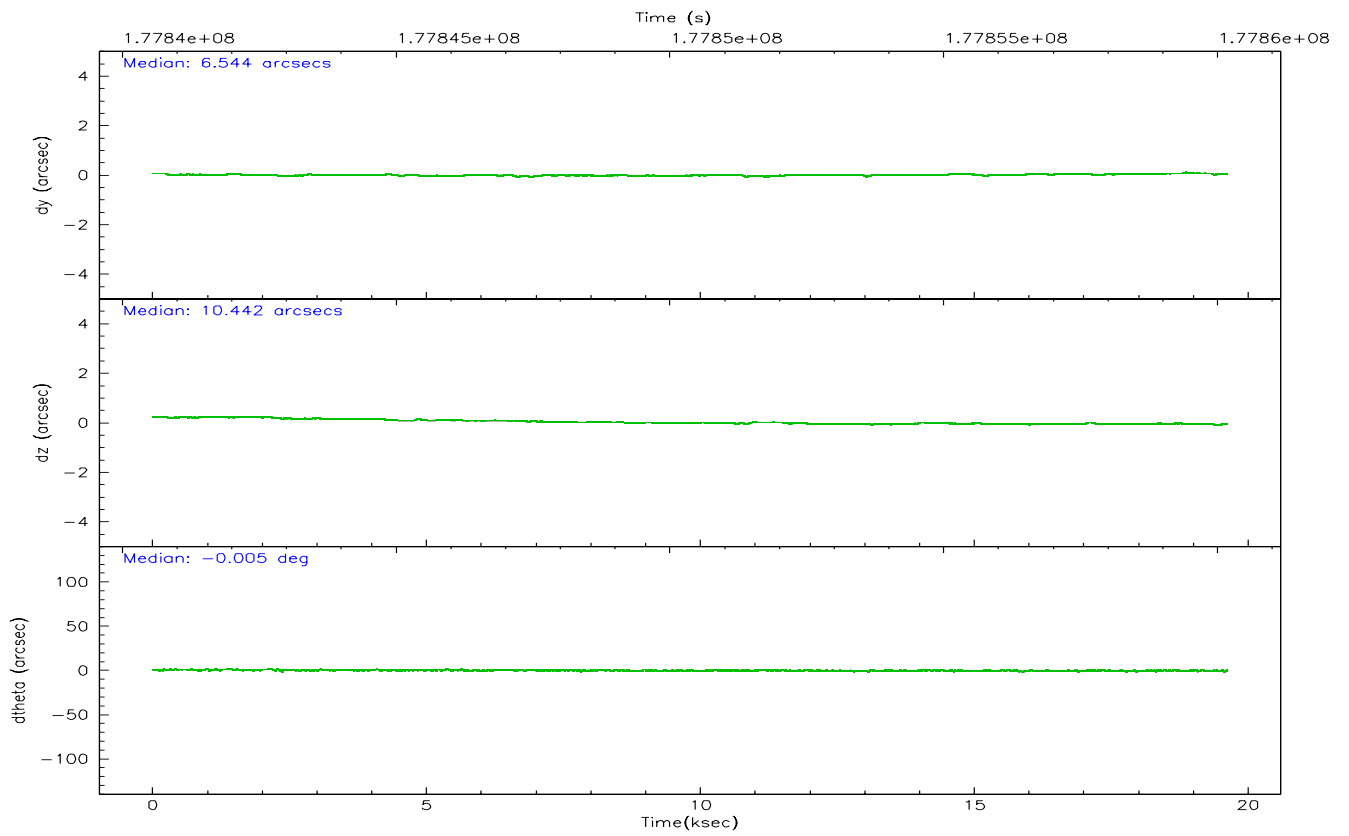
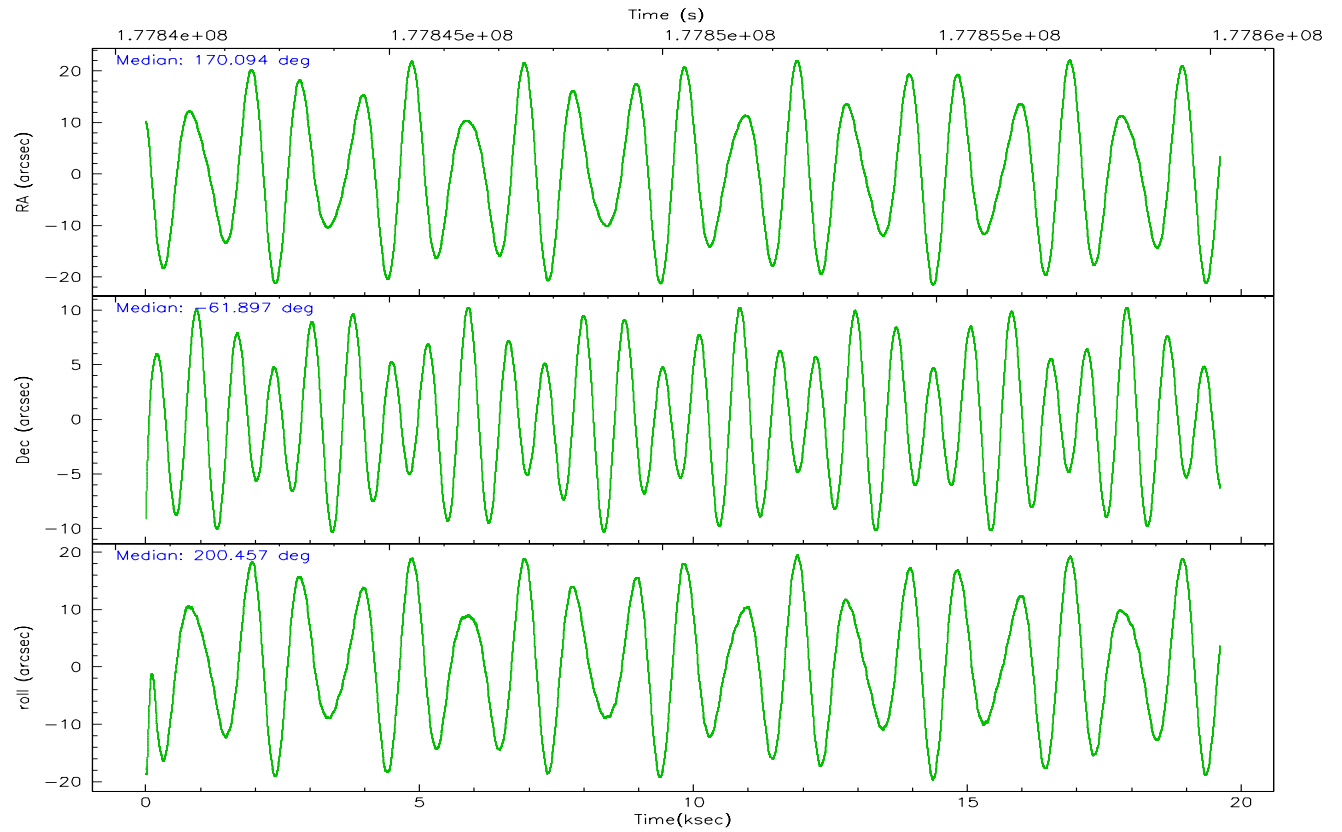
	ccd 2	ccd 3	ccd 5	ccd 6	ccd 7	ccd 8
grade 0 events	1044	977	2352	1092	1989	1661
	4%	4%	8%	5%	6%	5%
grade 1 events	7	5	25	3	21	4
	0%	0%	0%	0%	0%	0%
grade 2 events	482	406	3760	388	3718	1071
	2%	2%	13%	1%	12%	3%
grade 3 events	381	385	931	391	1526	680
	1%	1%	3%	1%	5%	2%
grade 4 events	353	365	983	317	1541	665
	1%	1%	3%	1%	5%	2%
grade 5 events	605	612	1465	644	1783	868
	2%	3%	5%	3%	6%	2%
grade 6 events	414	347	7057	416	7599	1533
	1%	1%	24%	2%	26%	5%
grade 7 events	19506	16604	11720	17460	10966	22611
	85%	84%	41%	84%	37%	77%

## 2.2 Compared Parameters

Parameter	Planned	Actual	Parameter	Planned	Actual
Instrument	ACIS	ACIS	Obspar format version number	6	6
Detector	ACIS-235678	ACIS-235678	Obspar file type	PREDICTED	ACTUAL
Grating	NONE	NONE	Obspar update status	NONE	UPDATED
Data mode	FAINT	FAINT	On-chip summing requested	N	N
Observation mode	POINTING	POINTING	Subarray requested	CUSTOM	1/8
Pointing RA	170.130150	170.0939315840114	Subarray start row	150	150
Pointing Dec	-61.875767	-61.8970026949915	Subarray row count	128	128
Pointing Roll	200.338815	200.4634741332264	Alternating exposures requested	N	N
SIM focus pos (mm)	-0.684267	-0.6828225247311905	Primary exposure time	0.000000	0.7
SIM defocus (mm)	0	0.001444936568705701			
SIM translation stage pos (mm)	-190.132523	-190.1400660498719			
SIM translation stage offset (mm)	0	0.00754346686406393			
Observation start time	177841077.184000	177839936.41605			
Observation start date	2003-08-21T08:16:53	2003-08-21T07:58:56			
Observation end time	177860177.184000	177861899.09199			
Observation end date	2003-08-21T13:35:13	2003-08-21T14:04:59			
Read mode	TIMED	TIMED			

## 2.3 Aspect





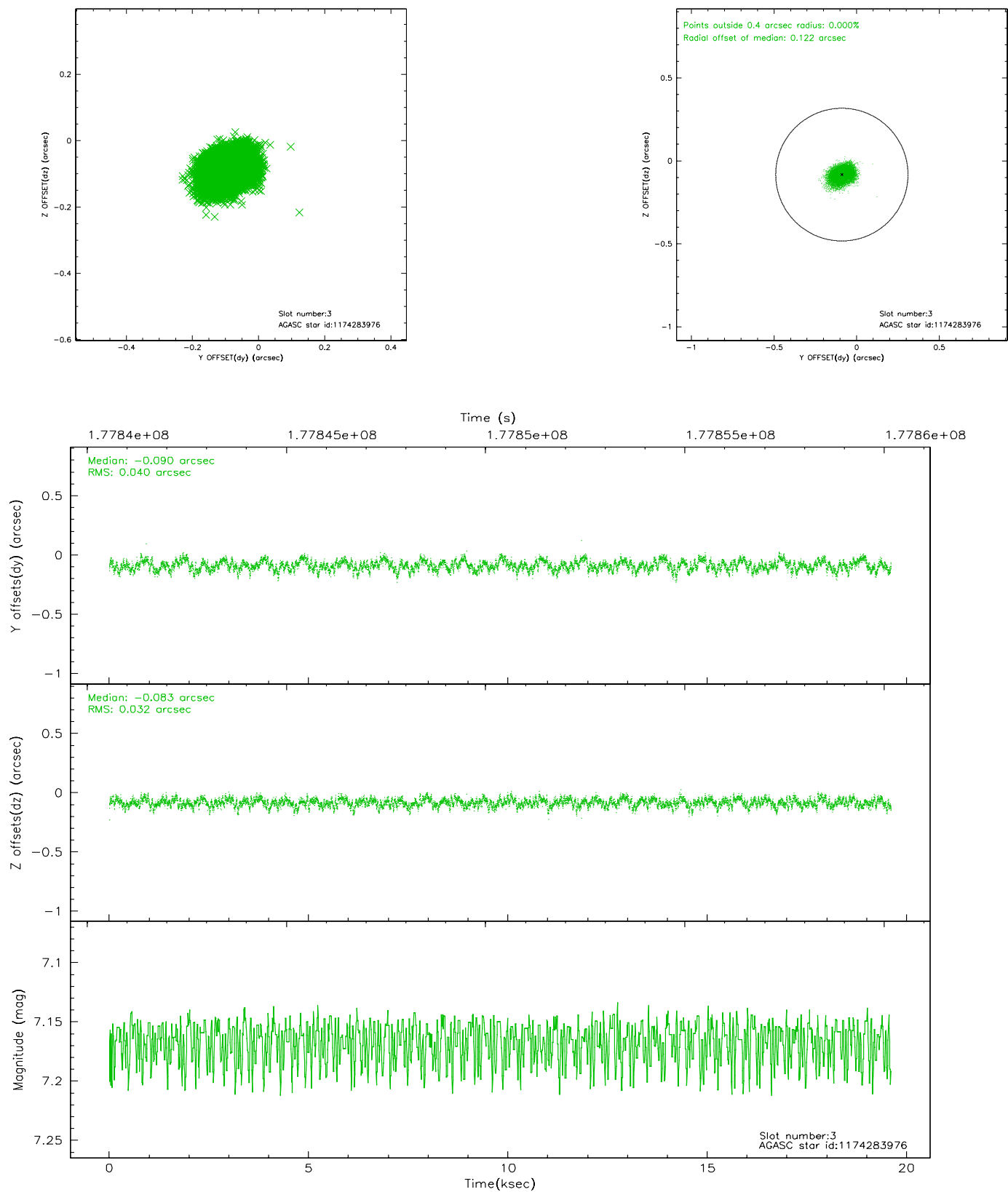
### Slot Statistics

slot	status	id	mag	n_pts	med_dy	med_dz	dr1	dr2	ra	dec	mean_y	mean_z
0	FID	ACIS-S-1	7.18	4782	0.014	-0.003	0.007	0.012	0.000000	0.000000	936.74	-1727.39
1	FID	ACIS-S-2	7.10	4779	-0.033	0.024	0.008	0.014	0.000000	0.000000	-759.10	-1732.09
2	FID	ACIS-S-5	7.23	4779	-0.004	-0.014	0.006	0.011	0.000000	0.000000	-1812.49	170.00
3	GUIDE	1174283976	7.16	9559	-0.090	-0.083	0.055	0.087	170.390254	-61.226219	-1234.76	-2035.34
4	GUIDE	1174290744	8.18	9559	-0.044	0.115	0.064	0.098	171.197974	-61.558775	-2108.18	-419.72
5	GUIDE	1174800184	7.78	9560	-0.103	-0.064	0.054	0.086	170.745254	-62.407221	-295.60	2155.12
6	GUIDE	1174277600	8.62	9561	0.161	-0.044	0.078	0.124	168.590455	-61.587206	2123.03	-1860.82
7	GUIDE	1174805272	9.25	9557	0.074	0.077	0.091	0.146	170.397032	-62.374213	206.34	1838.38

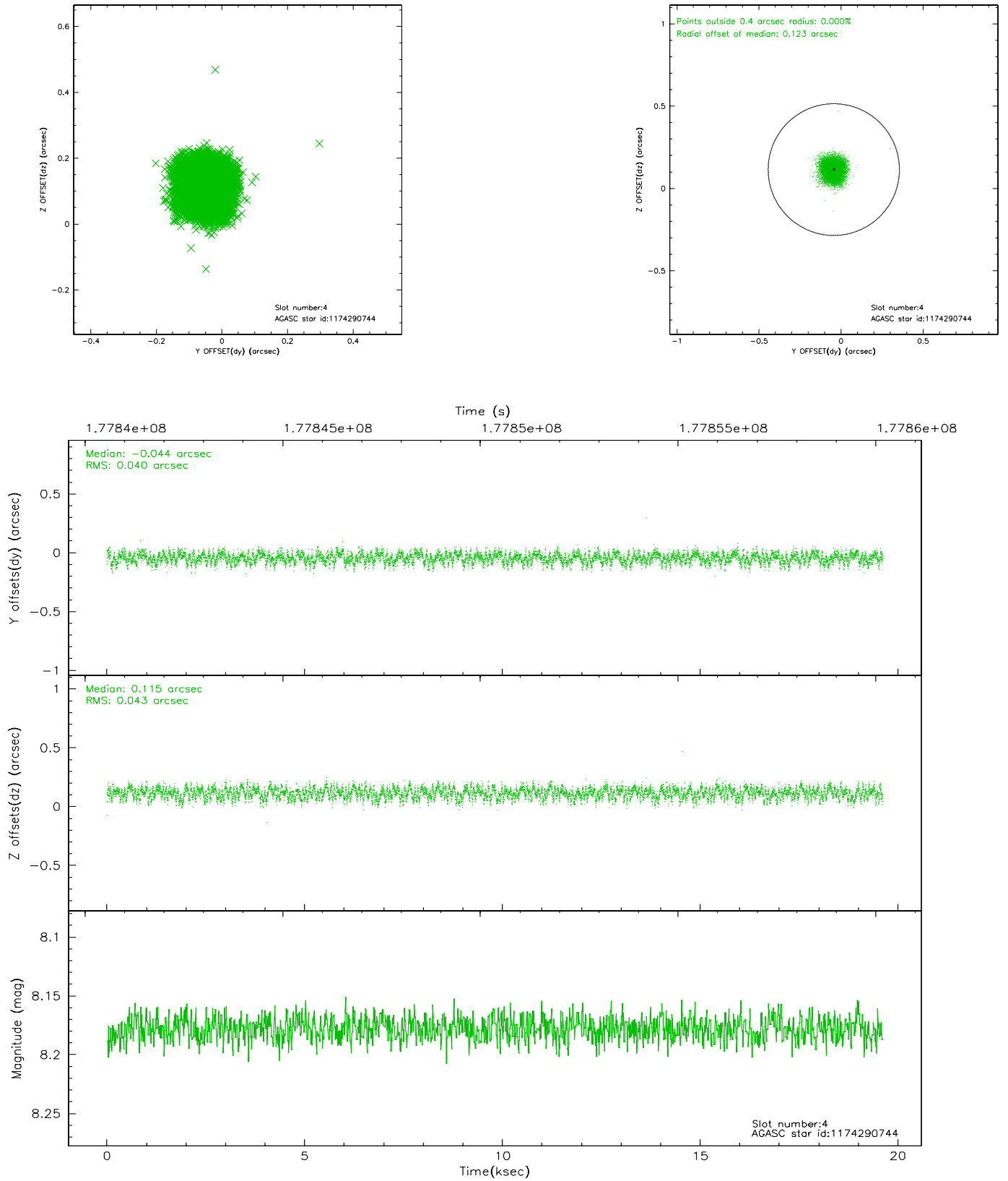


## 2.4 Star Slots

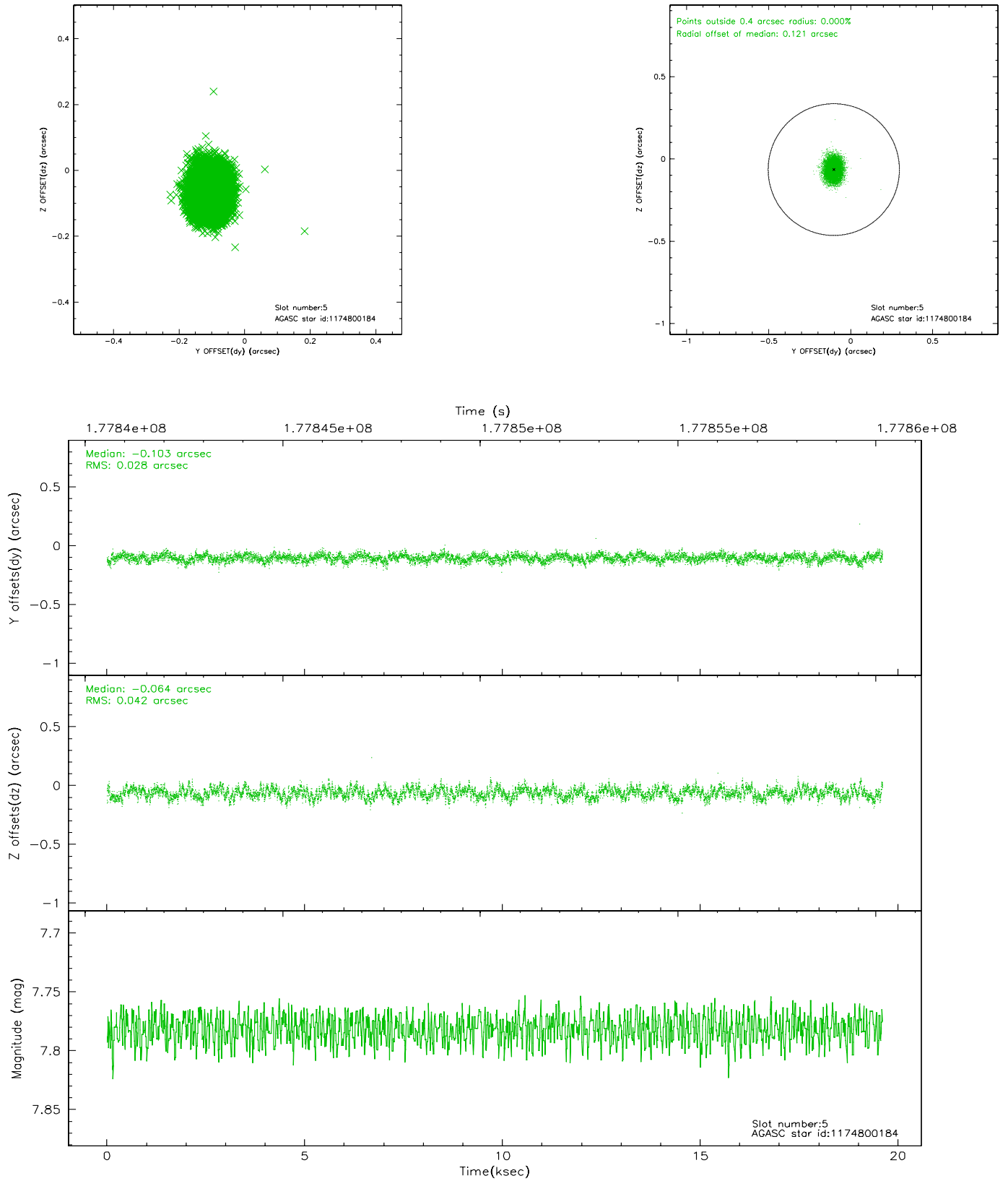
### 2.4.1 Slot 3



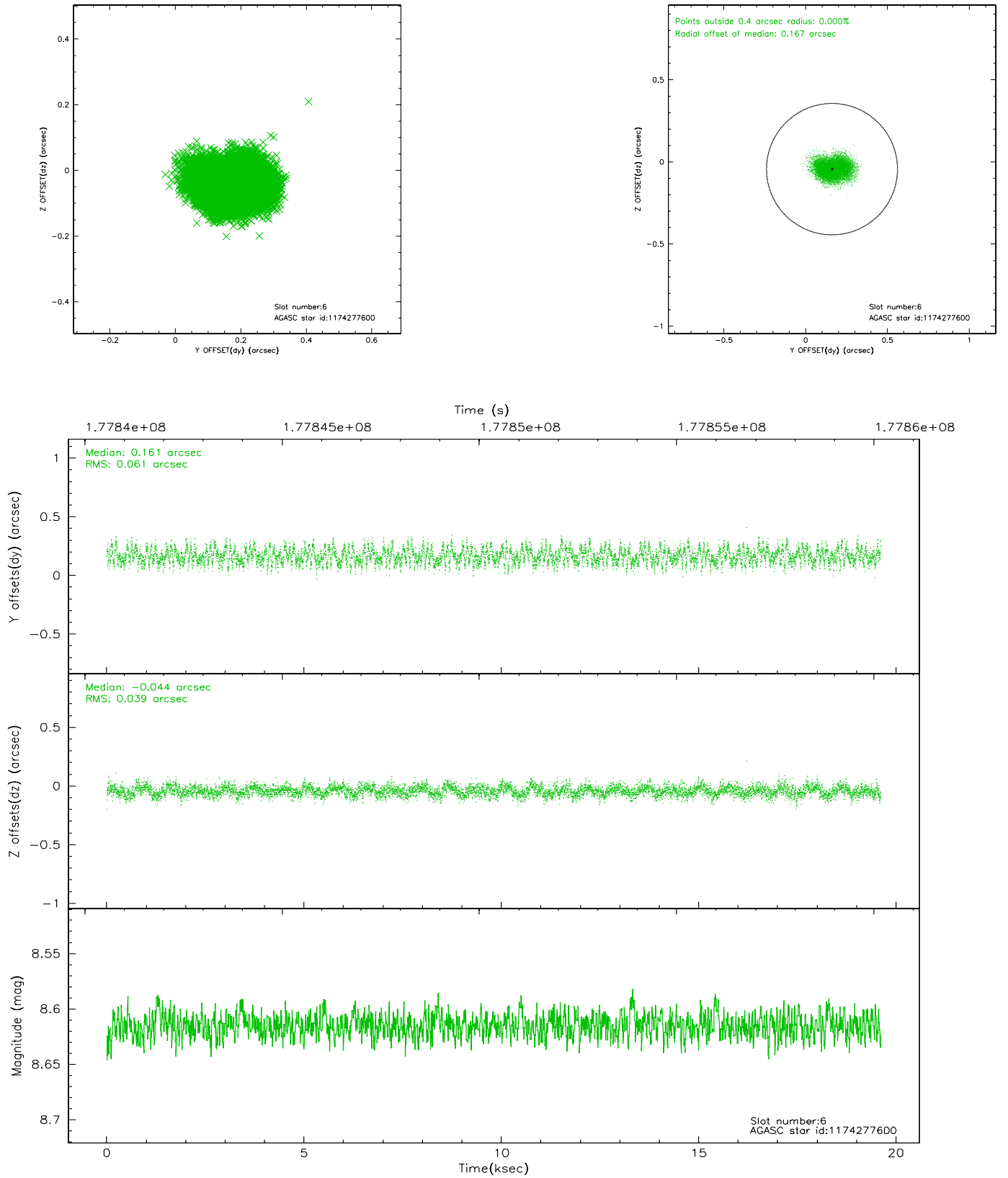
## 2.4.2 Slot 4



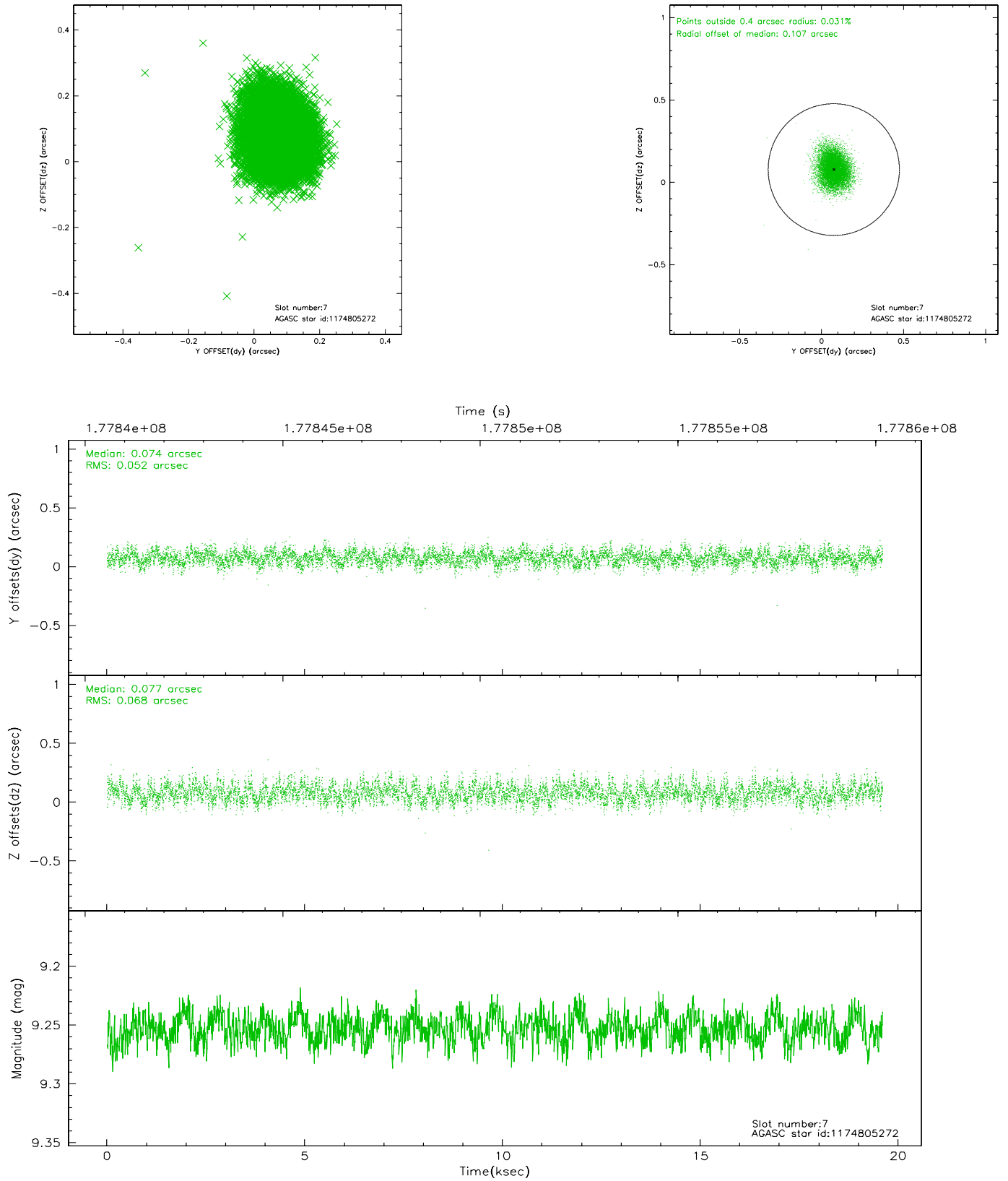
### 2.4.3 Slot 5



## 2.4.4 Slot 6

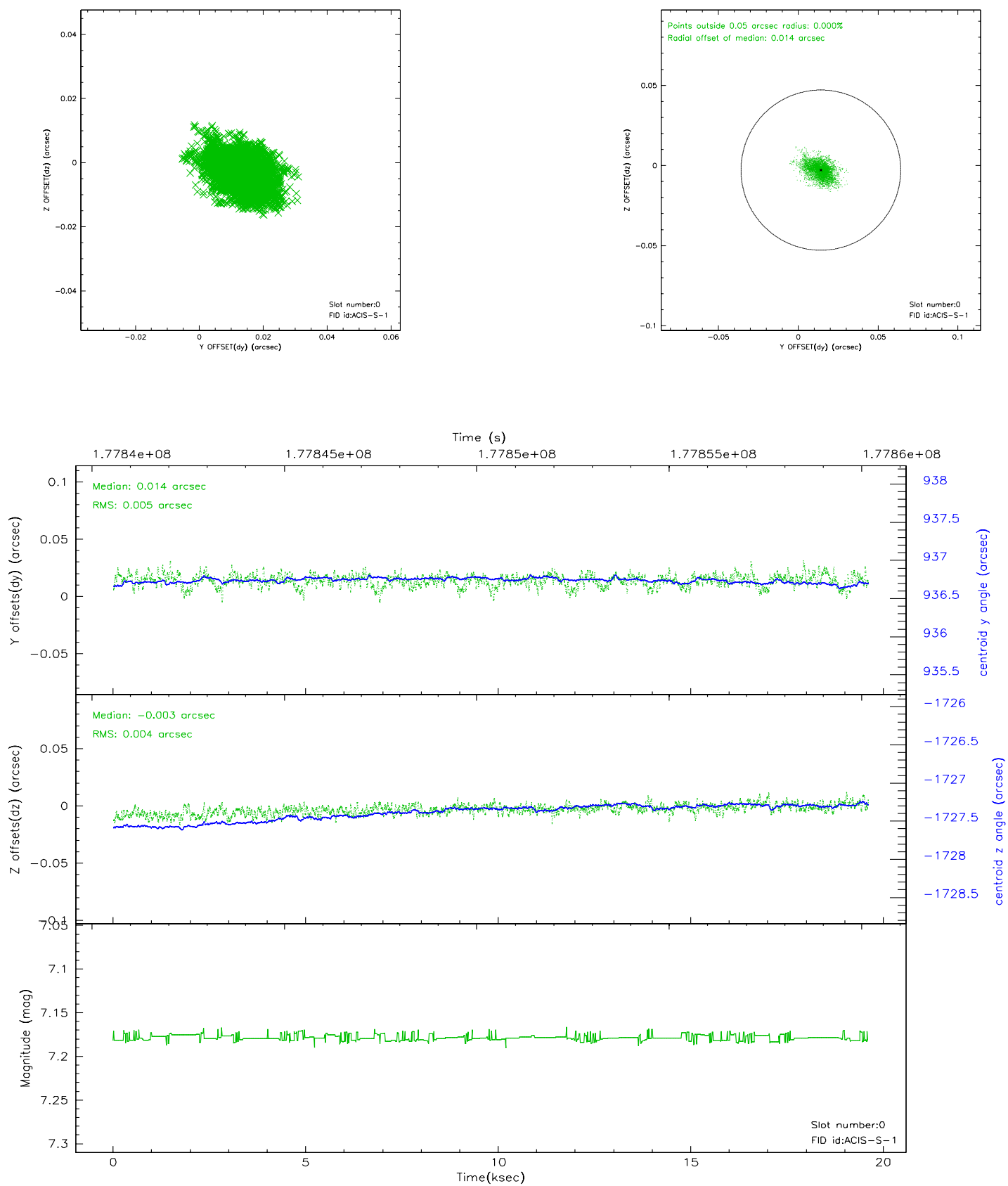


## 2.4.5 Slot 7

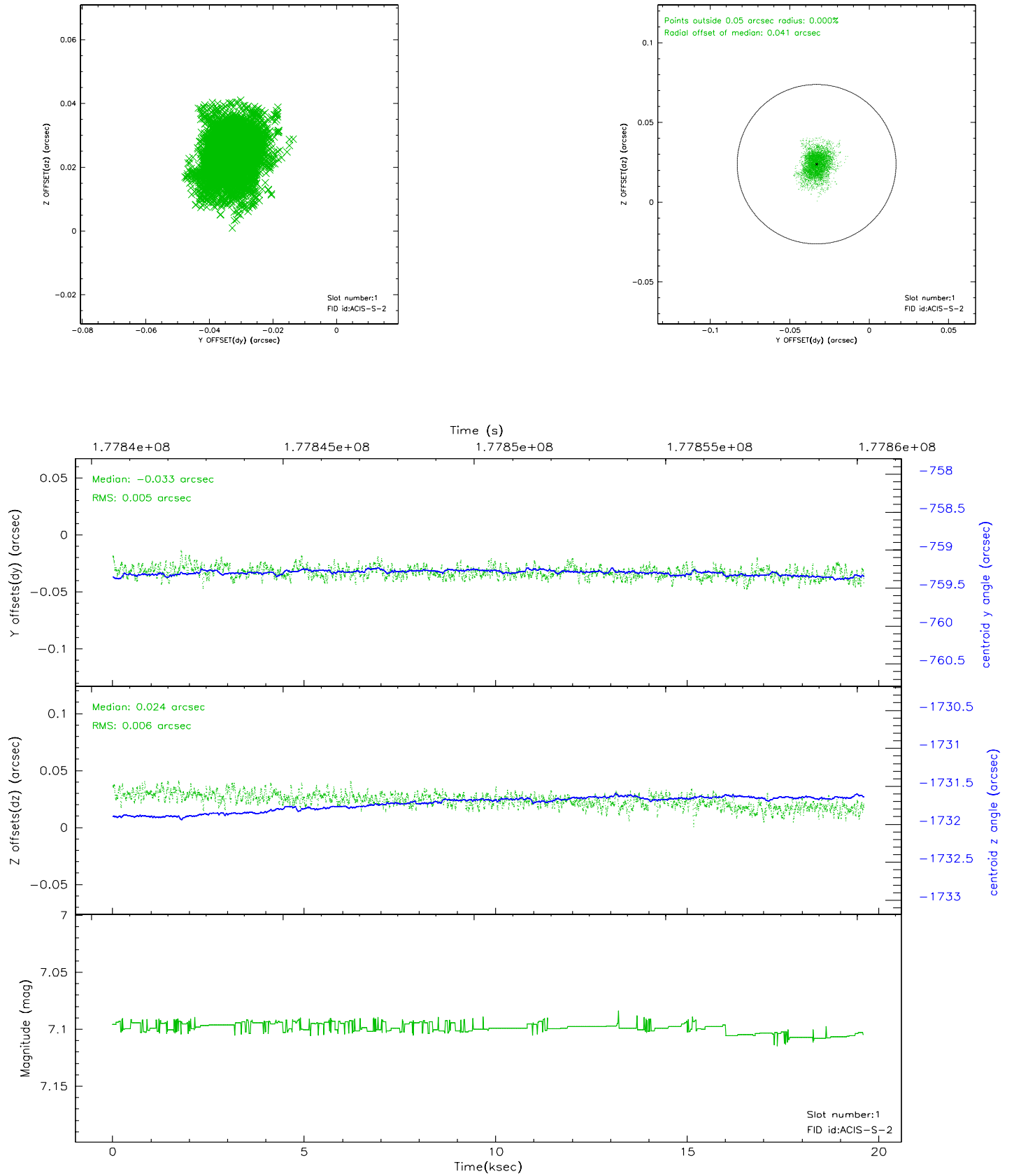


## 2.5 FID Slots

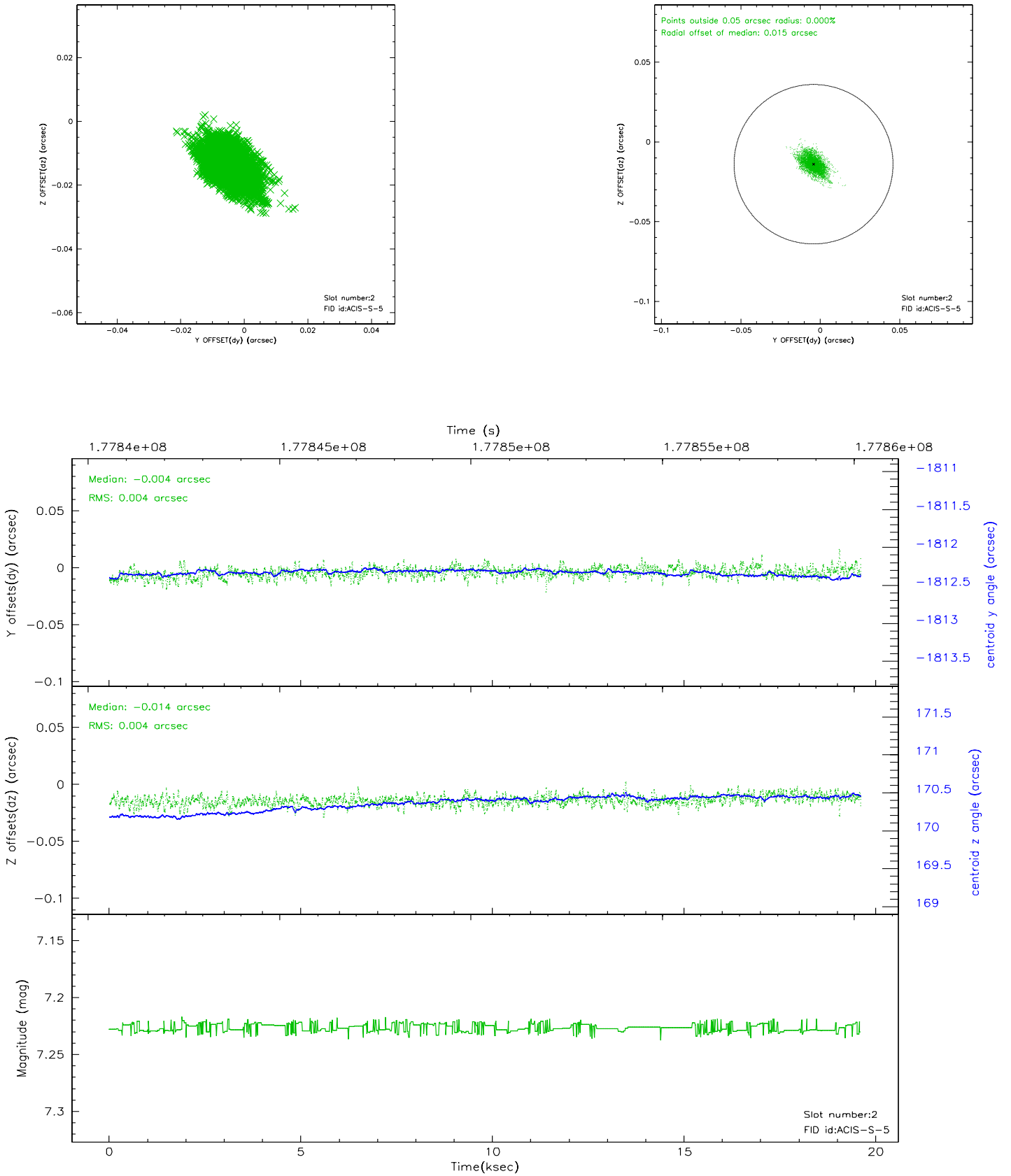
### 2.5.1 Slot 0



## 2.5.2 Slot 1

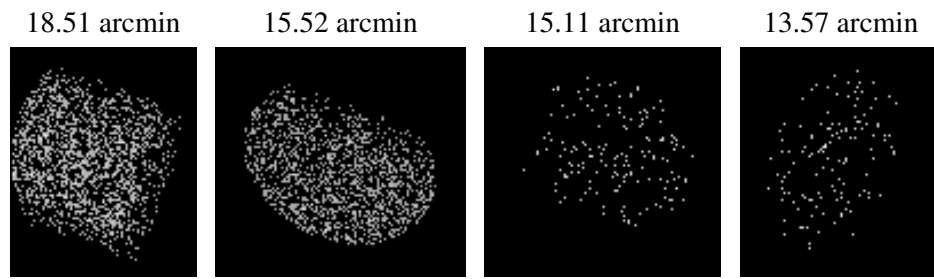


### 2.5.3 Slot 2





### 3 Point Sources



## A Summary

### A.1 Status

V&V Scientist	Jen Lauer
V&V Date (YYYY-MM-DD)	2006.07.07
V&V Edition	1
V&V Disposition and Status	OK
V&V Charge Time	19.605

### A.2 Comments