

V&V Reference Report

L2 ASCDS Version : 8.5.1.1

Observation 3787 - L2 Version 3
Chandra X-Ray Center

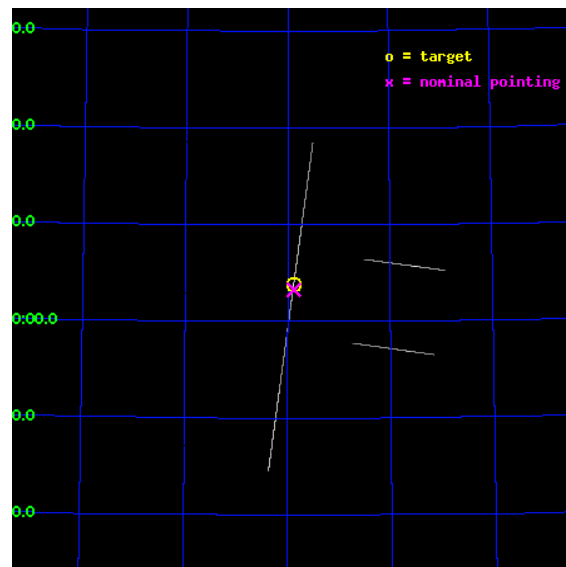
L2 Processing Date : Jan 4 2013

Contents

1	Front	2
2	OBI	3
2.1	OBI	3
2.1.1	Images	3
2.1.2	Bias	3
2.1.3	Parameters	4
2.1.4	Events	4
2.2	Compared Parameters	5
2.3	Aspect	6
2.4	Star Slots	9
2.4.1	Slot 3	9
2.4.2	Slot 4	10
2.4.3	Slot 5	11
2.4.4	Slot 6	12
2.4.5	Slot 7	13
2.5	FID Slots	14
2.5.1	Slot 0	14
2.5.2	Slot 1	15
2.5.3	Slot 2	16
A	Summary	17
A.1	Status	17
A.2	Comments	17

1 Front

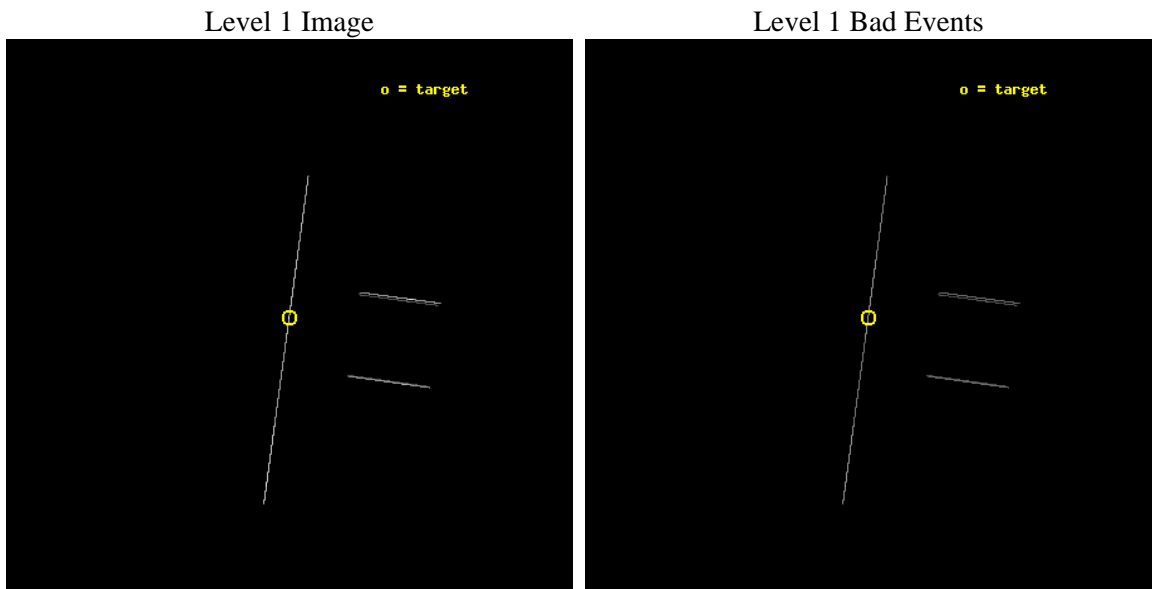
seq_num	400274	Sequence number
obs_id	3787	Observation id
title	MONITORING THE SPECTRAL VARIABILITY OF THE ULTRALUMINOUS X-RAY SOURCE IN HOLMBERG IX	Proposal title
observer	Dr. Patrick Slane	Principal investigator
object	1E0953.8+6918	Source name
ra_targ	149.470833	Observer's specified target RA [deg]
dec_targ	69.064167	Observer's specified target Dec [deg]
ra_nom	149.46965815952	Nominal RA [deg]
dec_nom	69.054506278014	Nominal Dec [deg]
roll_nom	277.77950152904	Nominal Roll [deg]
revision	3	Processing version of data
ontime	15336.5	Sum of GTIs [s]
livetime	15276.591796875	Livetime [s]
ontime2	15336.5	Sum of GTIs [s]
ontime3	15336.5	Sum of GTIs [s]
ontime5	15336.5	Sum of GTIs [s]
ontime6	15336.5	Sum of GTIs [s]
ontime7	15336.5	Sum of GTIs [s]
ontime8	15336.5	Sum of GTIs [s]
l2events	205326	Number of level 2 events



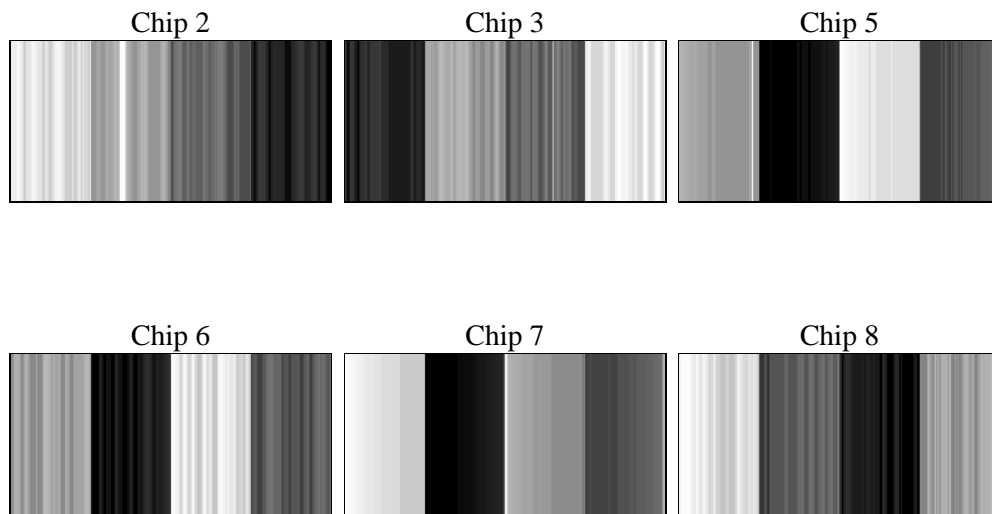
2 OBI

2.1 OBI

2.1.1 Images



2.1.2 Bias



2.1.3 Parameters

obi_num	0	Obi number	sched_exp_time	15200.000000	[s] Scheduled observation exposure time
ascdsver	8.5.1.1	Processing system revision	ontime	15336.5	Sum of GTIs [s]
caldsver	4.5.5	 	ontime2	15336.5	Sum of GTIs [s]
date	2013-01-04T18:36:51	Date and time of file creation	ontime3	15336.5	Sum of GTIs [s]
revision	3	Processing version of data	ontime5	15336.5	Sum of GTIs [s]
			ontime6	15336.5	Sum of GTIs [s]
			ontime7	15336.5	Sum of GTIs [s]
			ontime8	15336.5	Sum of GTIs [s]
			l1events	309839	Number of level 1 events

2.1.4 Events

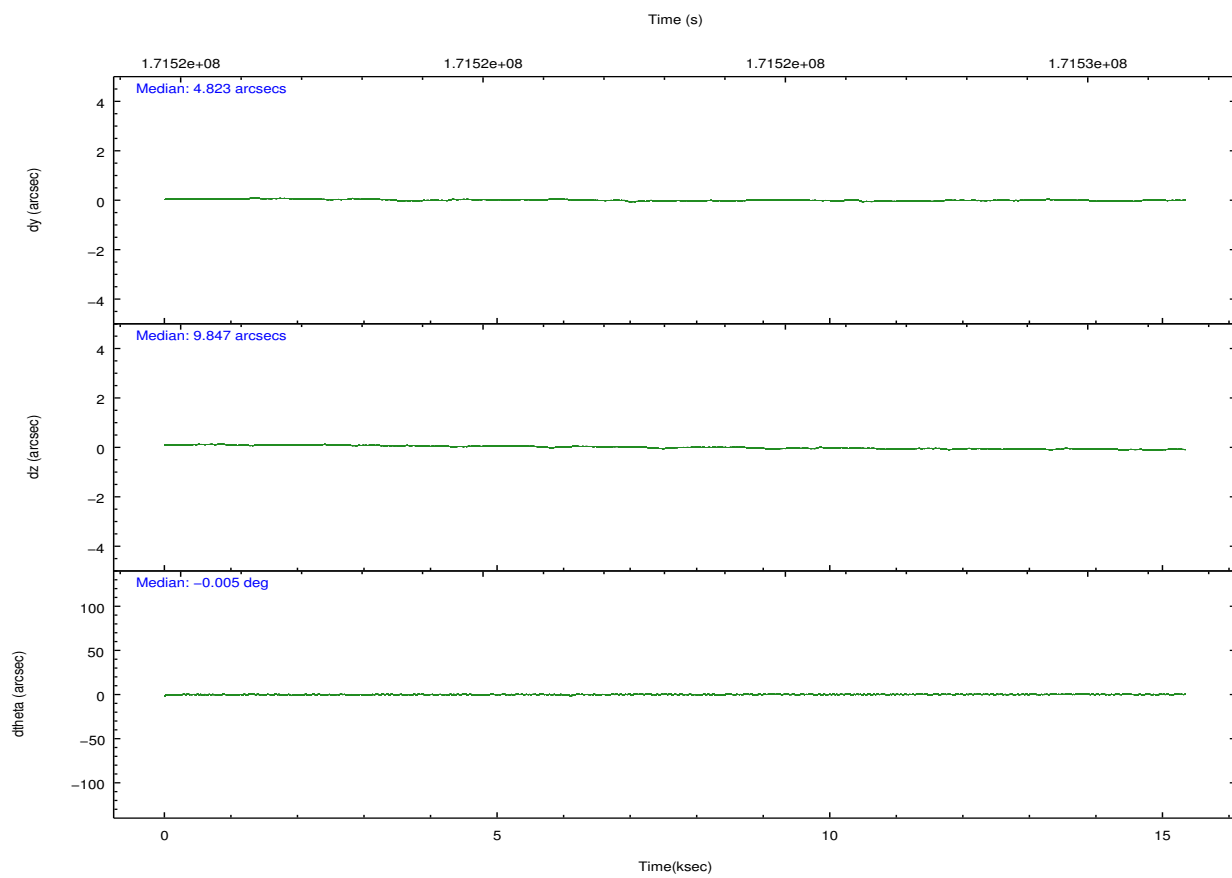
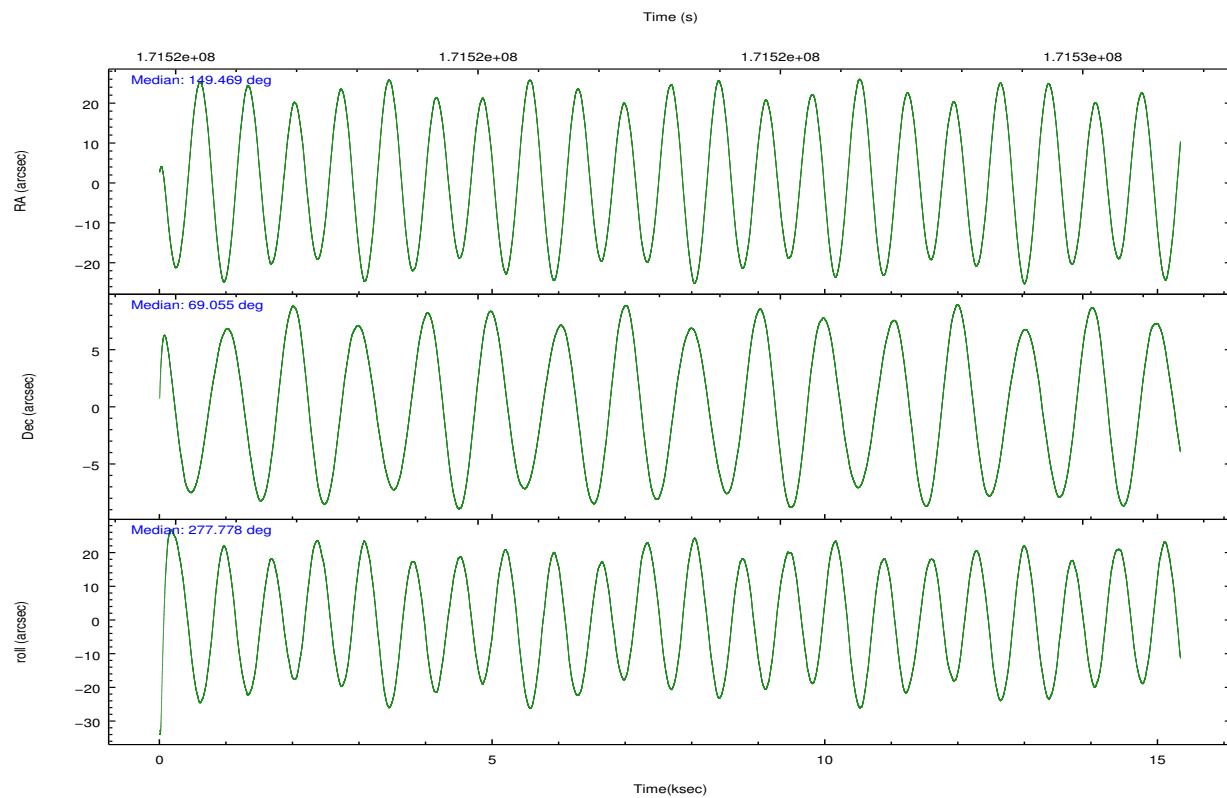
	ccd 2	ccd 3	ccd 5	ccd 6	ccd 7	ccd 8
level 1 events	22934	42315	97397	21649	84175	41369
rejected events	5002	5226	15660	5350	15364	8036
rejected %	21%	12%	16%	24%	18%	19%

	ccd 2	ccd 3	ccd 5	ccd 6	ccd 7	ccd 8
grade 0 events	2439	2911	21042	2056	10712	6857
	10%	6%	21%	9%	12%	16%
grade 1 events	81	78	151	76	166	136
	0%	0%	0%	0%	0%	0%
grade 2 events	8712	25851	23812	6761	18312	11218
	37%	61%	24%	31%	21%	27%
grade 3 events	2270	2606	2006	2287	6113	4140
	9%	6%	2%	10%	7%	10%
grade 4 events	2189	2148	1907	2225	6107	4169
	9%	5%	1%	10%	7%	10%
grade 5 events	3694	3838	9205	4044	11275	5538
	16%	9%	9%	18%	13%	13%
grade 6 events	3549	4883	39274	4200	31490	9311
	15%	11%	40%	19%	37%	22%
grade 7 events	0	0	0	0	0	0
	0%	0%	0%	0%	0%	0%

2.2 Compared Parameters

Parameter	Planned	Actual	Parameter	Planned	Actual
Instrument	ACIS	ACIS	Obspar format version number	7	7
Detector	ACIS-235678	ACIS-235678	Obspar file type	PREDICTED	ACTUAL
Grating	NONE	NONE	Obspar update status	NONE	UPDATED
Data mode	CC33_FAINT	CC33_FAINT	Number of optional ACIS chips dropped	0	0
Observation mode	POINTING	POINTING	On-chip summing requested	N	N
[deg] Pointing RA	149.422223	149.4696581595166	Subarray requested	NONE	NONE
[deg] Pointing Dec	69.075787	69.05450627801414	Alternating exposures requested	N	N
[deg] Pointing Roll	277.667217	277.7795015290395	[s] Primary exposure time	0.000000	0
[mm] SIM focus pos	-0.684267	-0.6828225247311905			
[mm] SIM defocus	0	0.001444936568705701			
[mm] SIM translation stage pos	-190.132523	-190.1425803651734			
[mm] SIM translation stage offset	0	0.01005778216563158			
[s] Observation start time (MET)	171515650.184000	171514370.55903			
Observation start date	2003-06-09T03:13:06	2003-06-09T02:52:50			
[s] Observation end time (MET)	171530850.184000	171531749.43477			
Observation end date	2003-06-09T07:26:26	2003-06-09T07:42:29			
Read mode	CONTINUOUS	CONTINUOUS			

2.3 Aspect

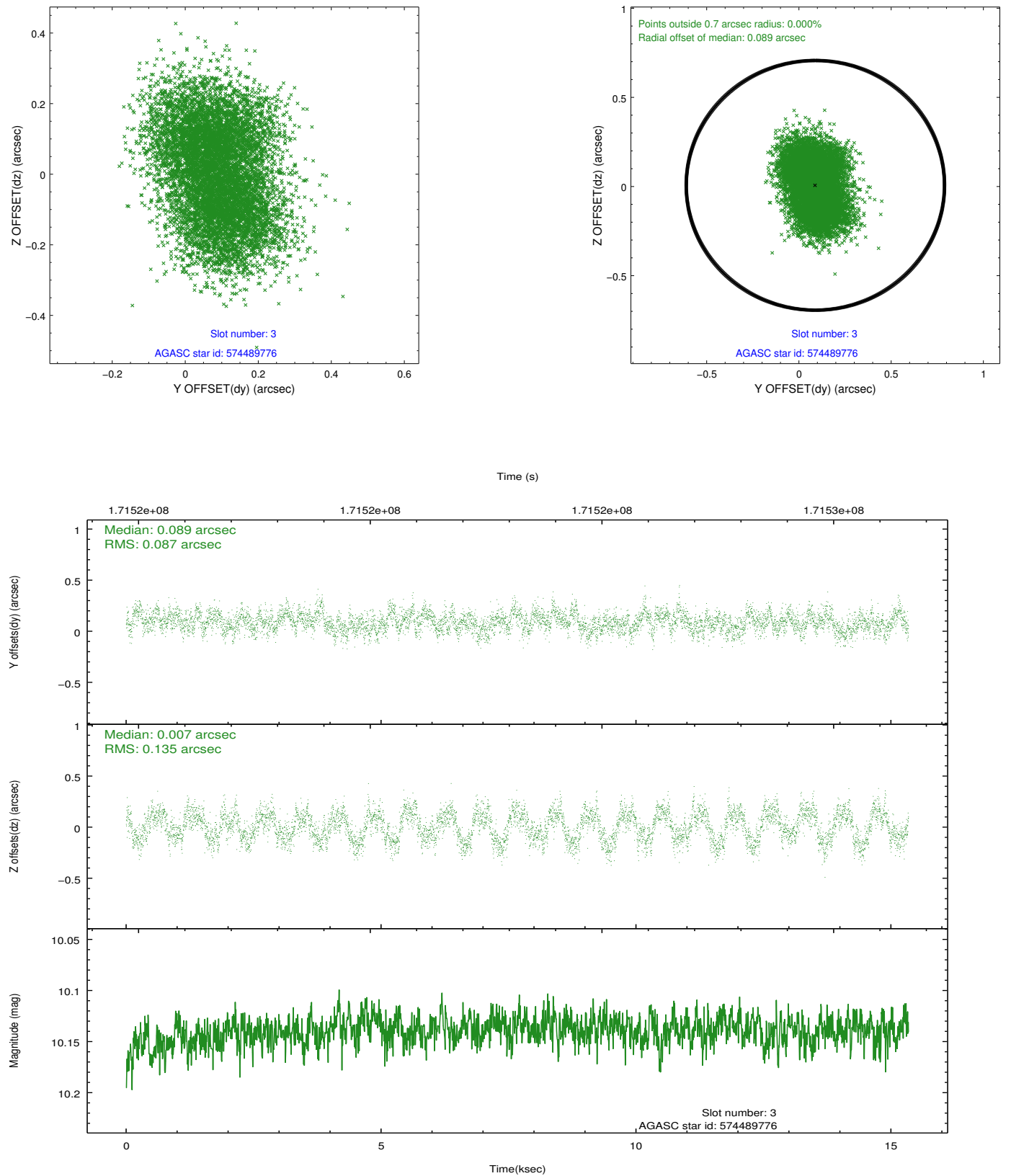


Slot Statistics

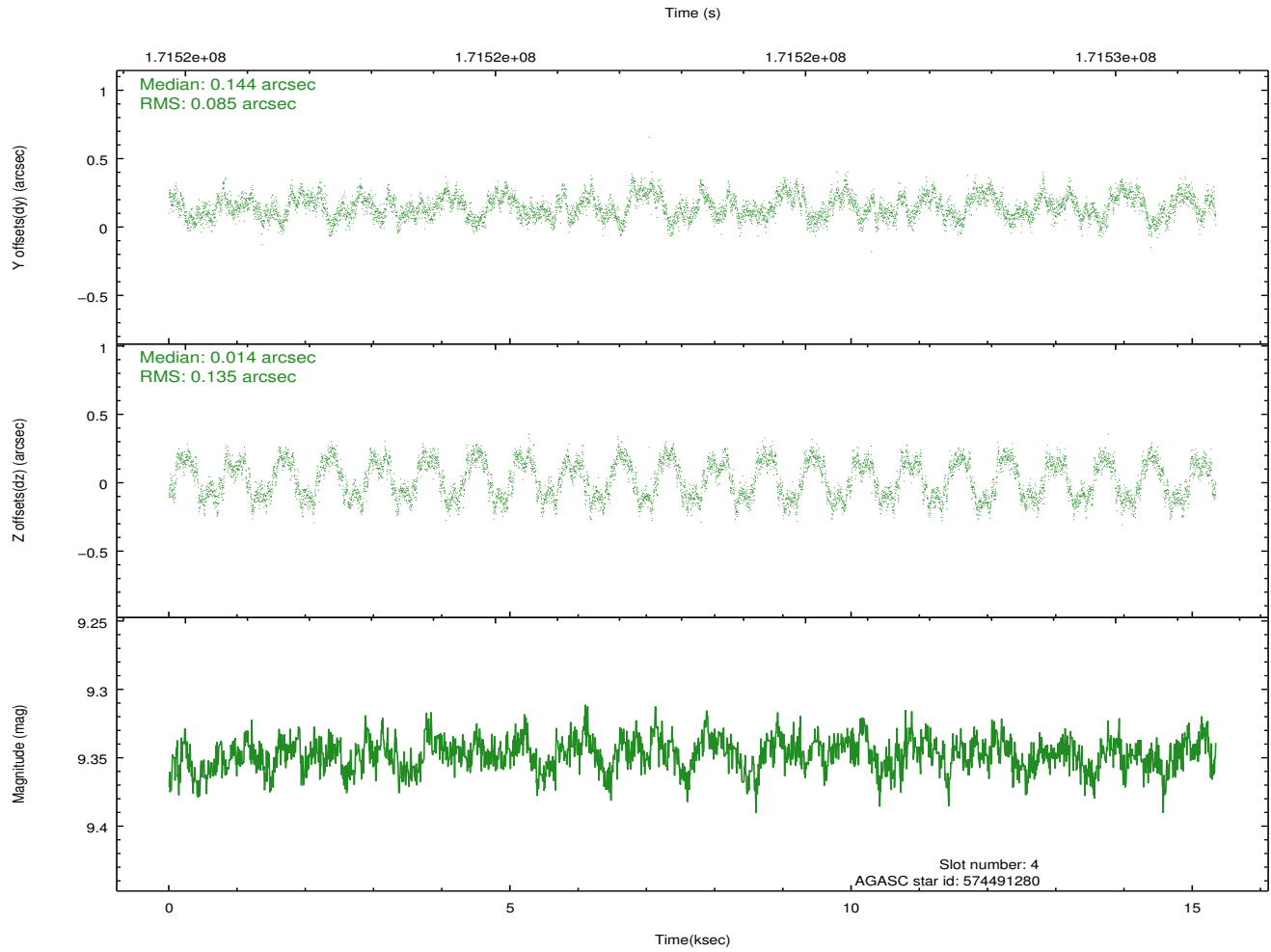
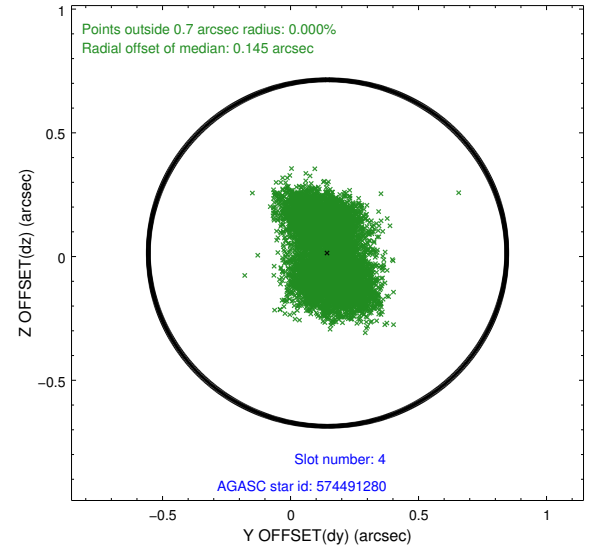
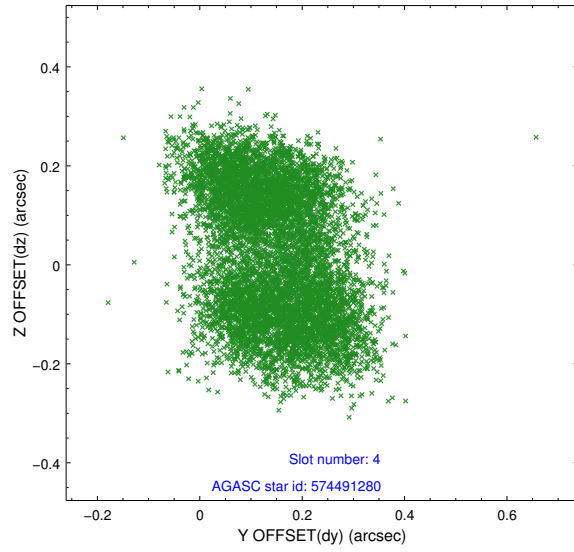
slot	status	id	mag	n_pts	med_dy	med_dz	dr1	dr2	ra	dec	mean_y	mean_z
0	FID	ACIS-S-2	7.11	3742	-0.053	-0.019	0.007	0.011	0.000000	0.000000	-757.55	-1731.07
1	FID	ACIS-S-4	7.21	3740	0.072	0.031	0.006	0.011	0.000000	0.000000	2155.70	177.20
2	FID	ACIS-S-5	7.23	3743	-0.051	-0.003	0.007	0.011	0.000000	0.000000	-1810.04	171.12
3	GUIDE	574489776	10.14	7469	0.089	0.007	0.174	0.268	148.323662	69.046710	-97.12	-1413.25
4	GUIDE	574491280	9.35	7470	0.144	0.014	0.175	0.251	148.611567	69.450135	-1478.32	-834.64
5	GUIDE	574496360	9.47	7477	0.057	0.103	0.092	0.153	150.806604	68.529829	2170.96	1548.91
6	GUIDE	574491712	9.91	7474	-0.228	-0.039	0.121	0.194	147.262590	69.570889	-2175.48	-2444.09
7	GUIDE	574490960	9.74	7478	-0.060	-0.086	0.110	0.179	148.185918	69.658768	-2301.86	-1251.15

2.4 Star Slots

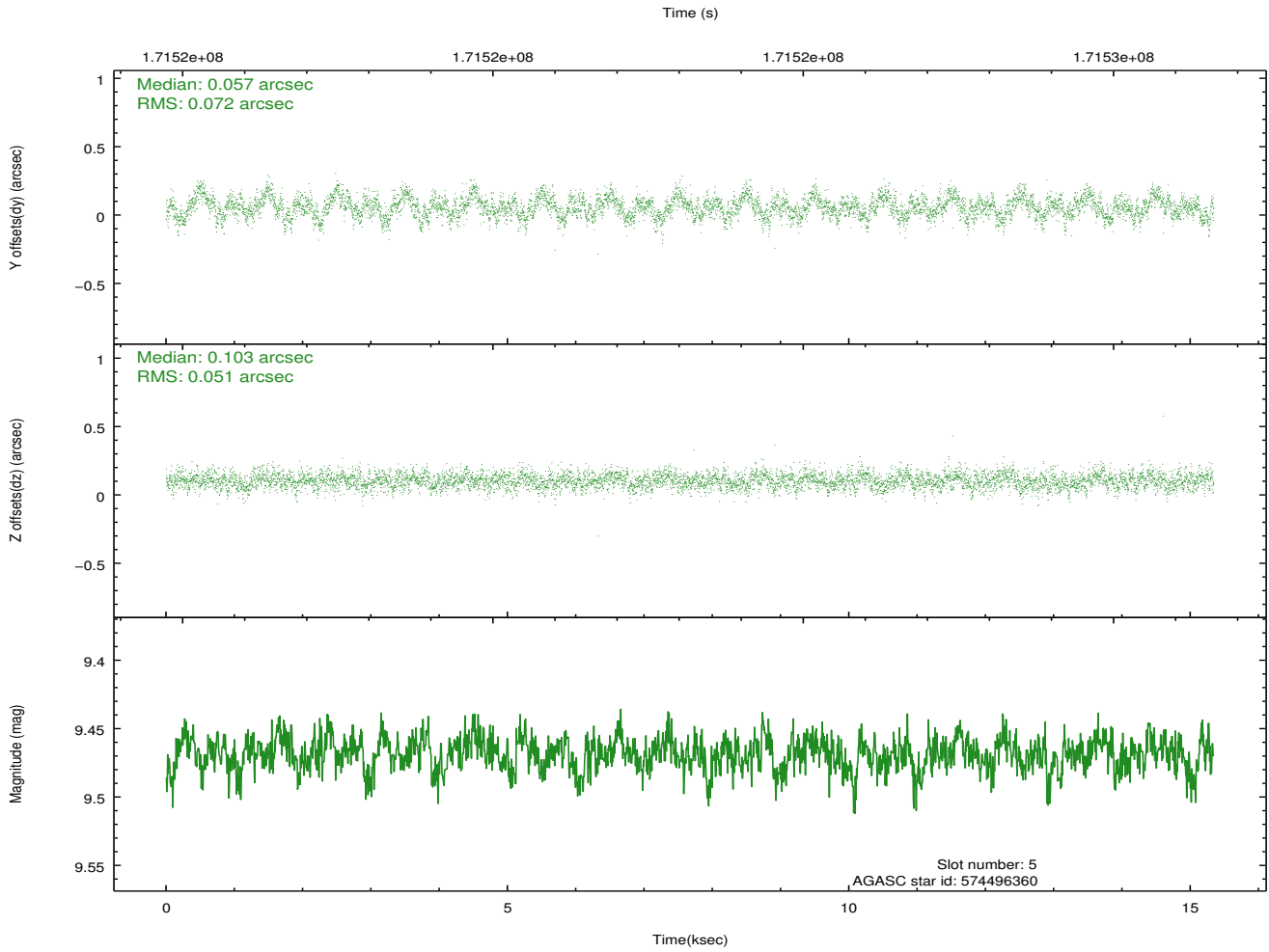
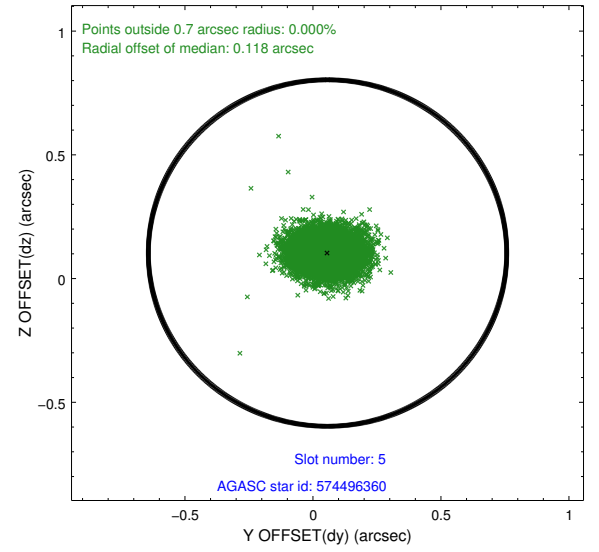
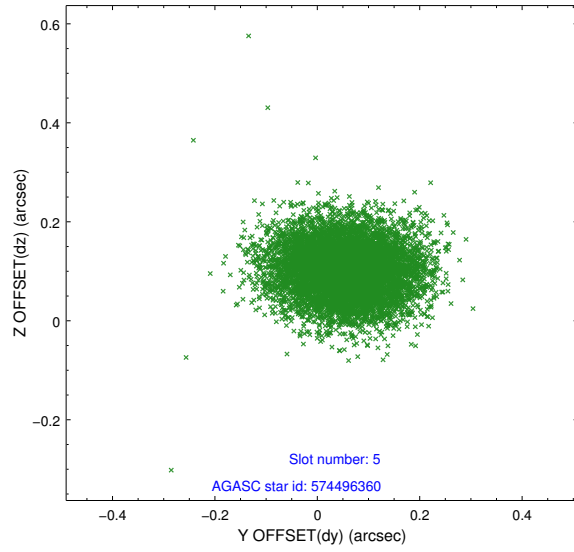
2.4.1 Slot 3



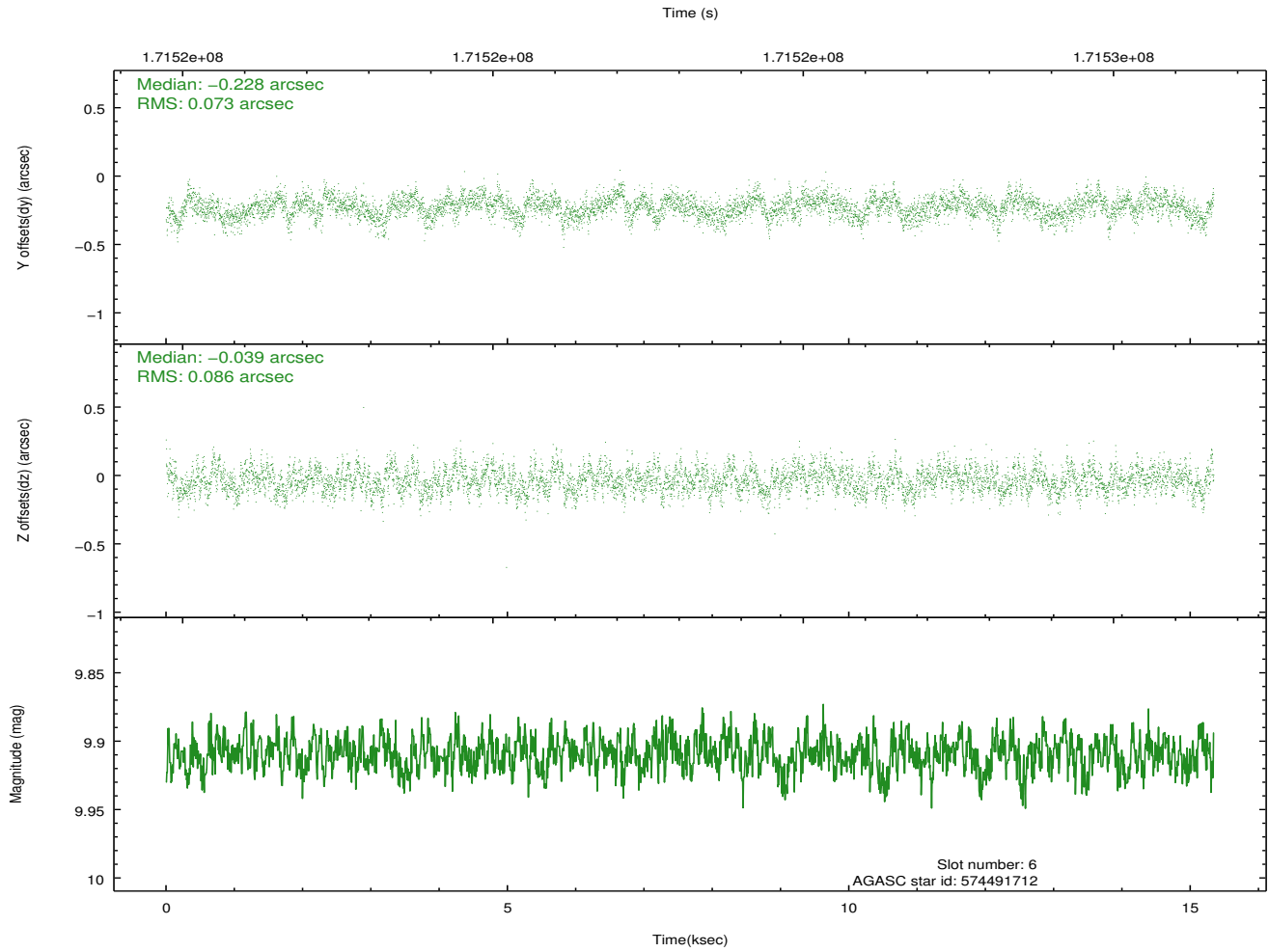
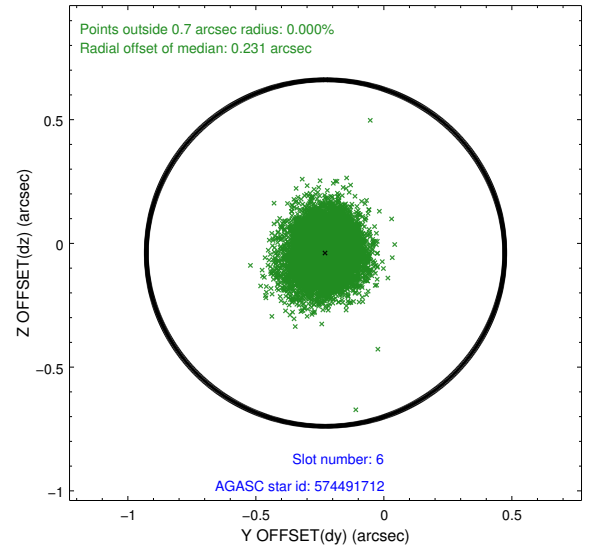
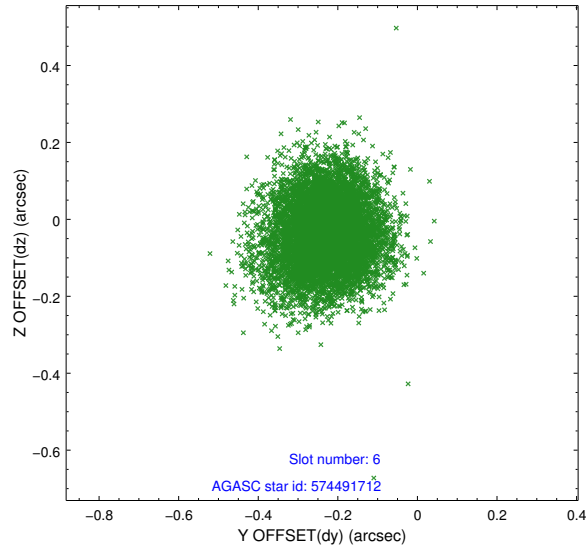
2.4.2 Slot 4



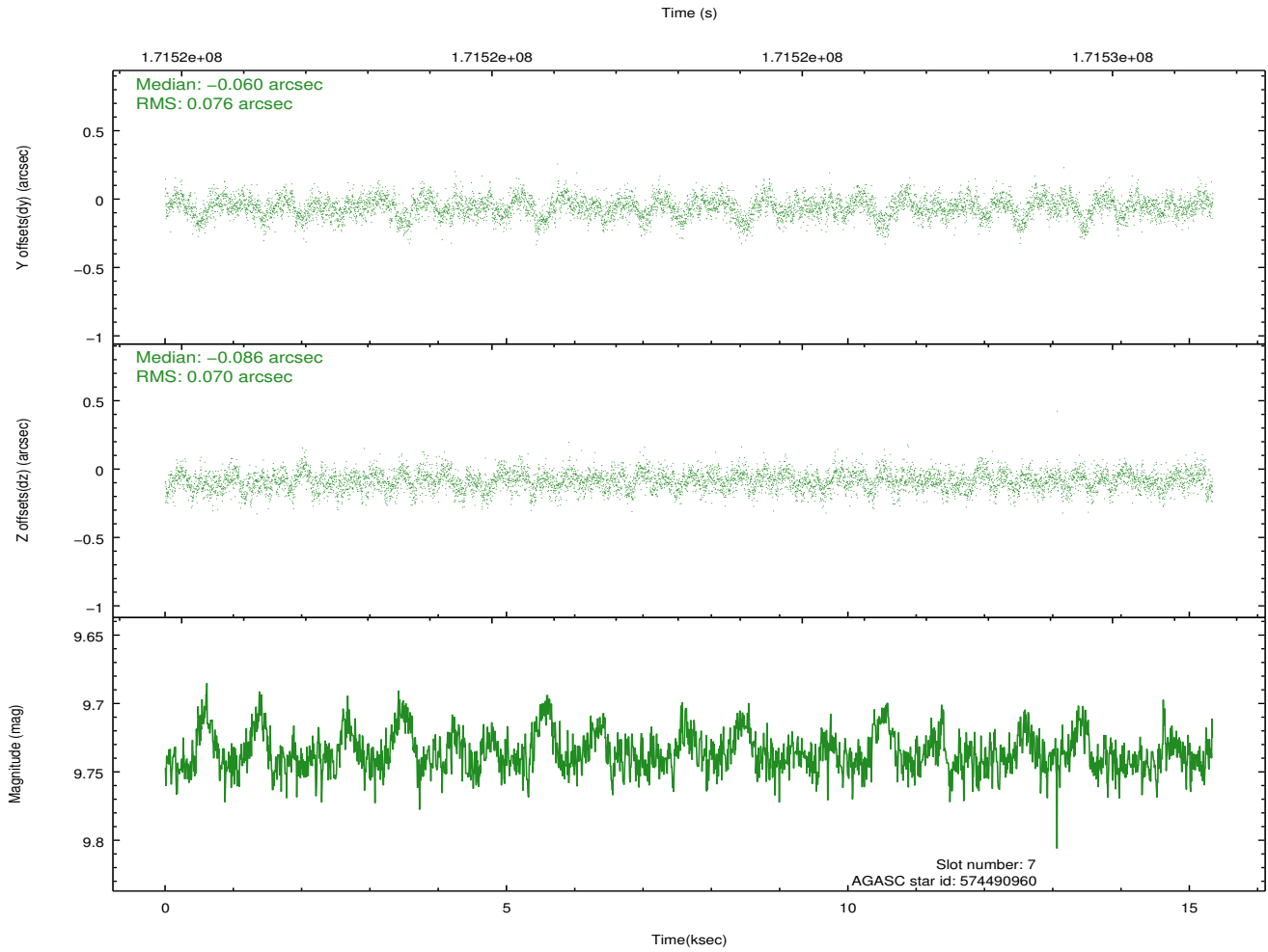
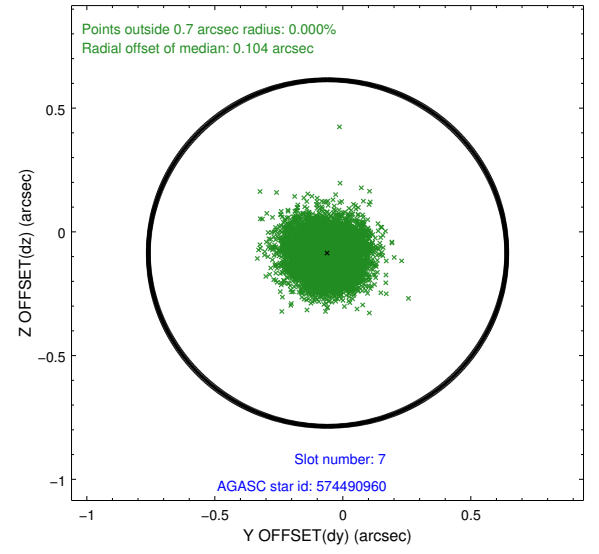
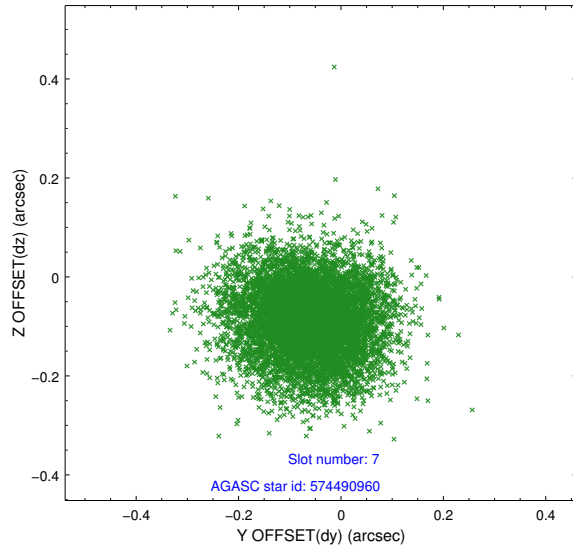
2.4.3 Slot 5



2.4.4 Slot 6

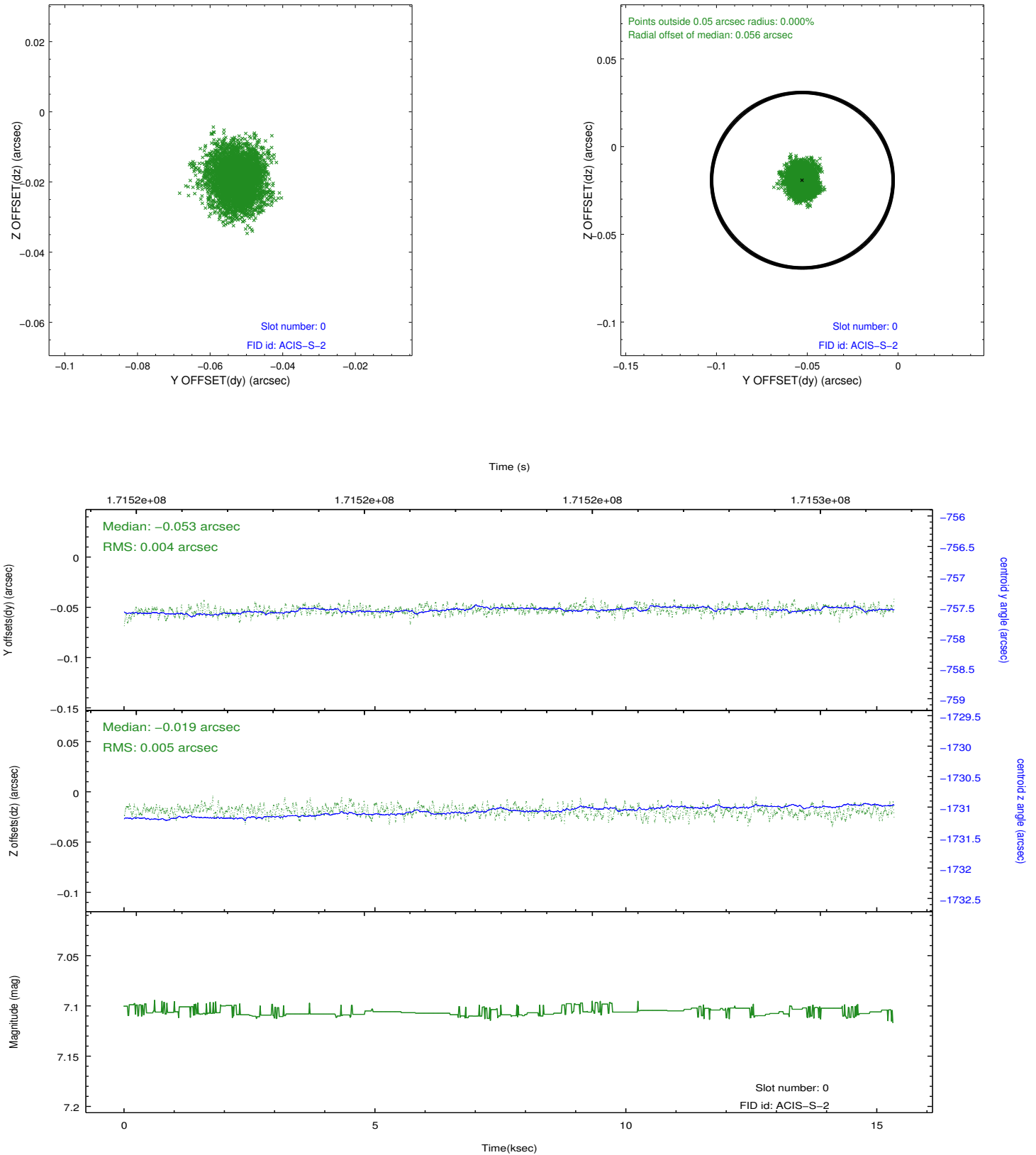


2.4.5 Slot 7

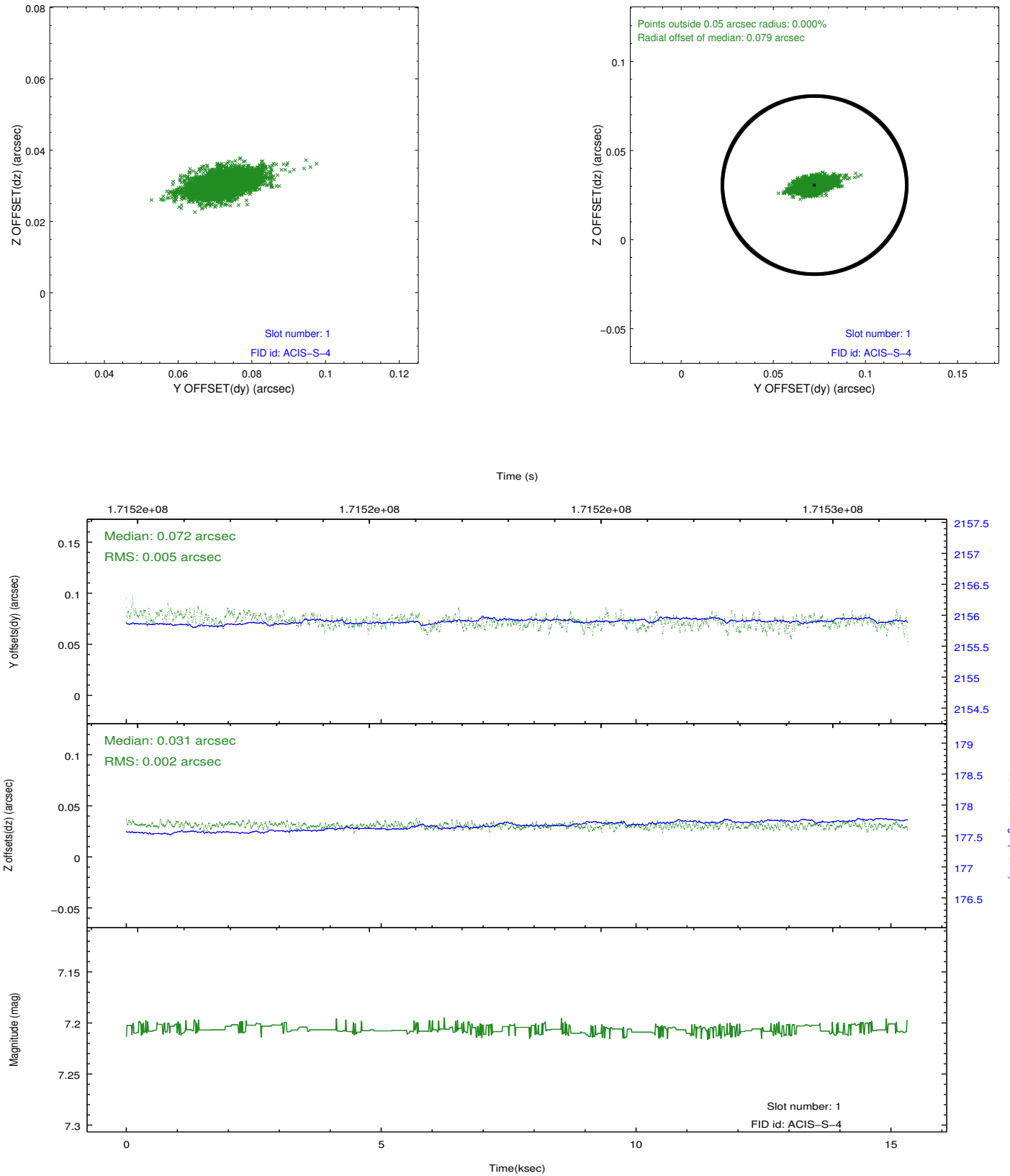


2.5 FID Slots

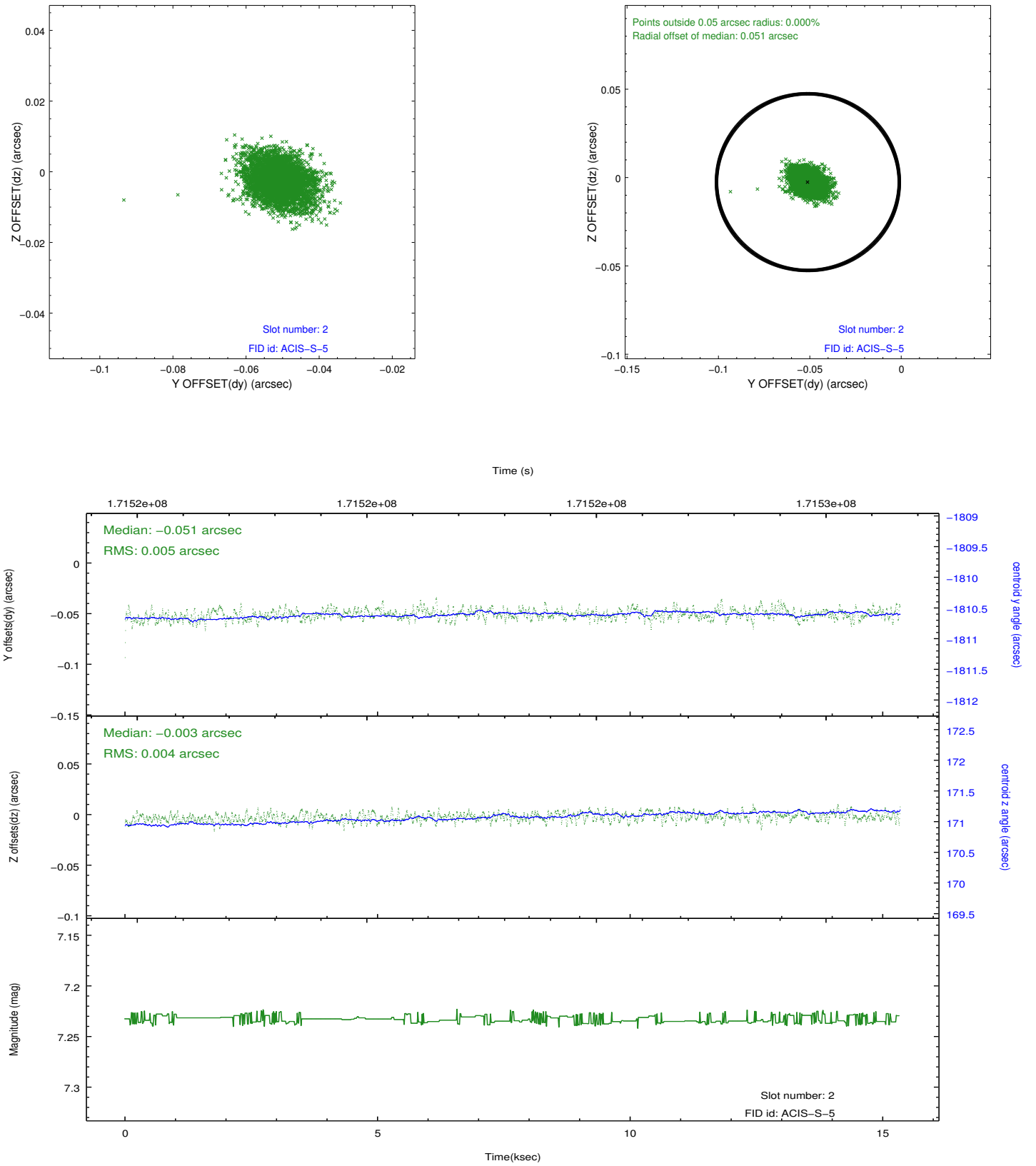
2.5.1 Slot 0



2.5.2 Slot 1



2.5.3 Slot 2



A Summary

A.1 Status

V&V Scientist	Joy Nichols
V&V Date (YYYY-MM-DD)	2013.01.14
V&V Edition	1
V&V Disposition and Status	OK
V&V Charge Time	15.326

A.2 Comments