

V&V Reference Report

L2 ASCDS Version : 8.4.5

Observation 3786 - L2 Version 5
Chandra X-Ray Center

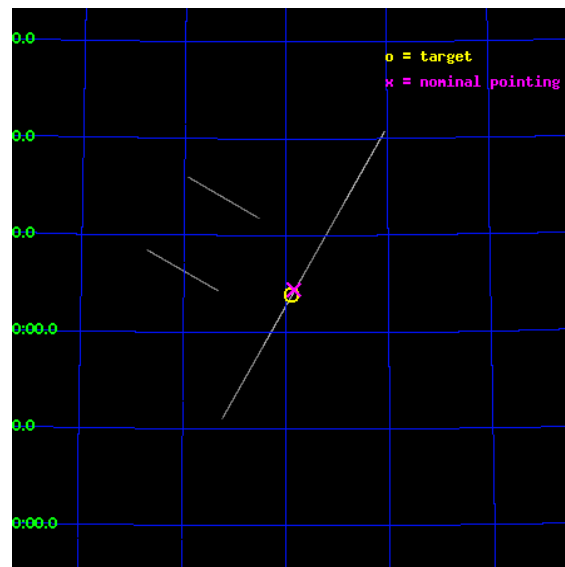
L2 Processing Date : Oct 19 2012

Contents

1	Front	2
2	OBI	3
2.1	OBI	3
2.1.1	Images	3
2.1.2	Bias	3
2.1.3	Parameters	4
2.1.4	Events	4
2.2	Compared Parameters	5
2.3	Aspect	6
2.4	Star Slots	9
2.4.1	Slot 3	9
2.4.2	Slot 4	10
2.4.3	Slot 6	11
2.4.4	Slot 7	12
2.5	FID Slots	13
2.5.1	Slot 0	13
2.5.2	Slot 1	14
2.5.3	Slot 2	15
A	Summary	16
A.1	Status	16
A.2	Comments	16

1 Front

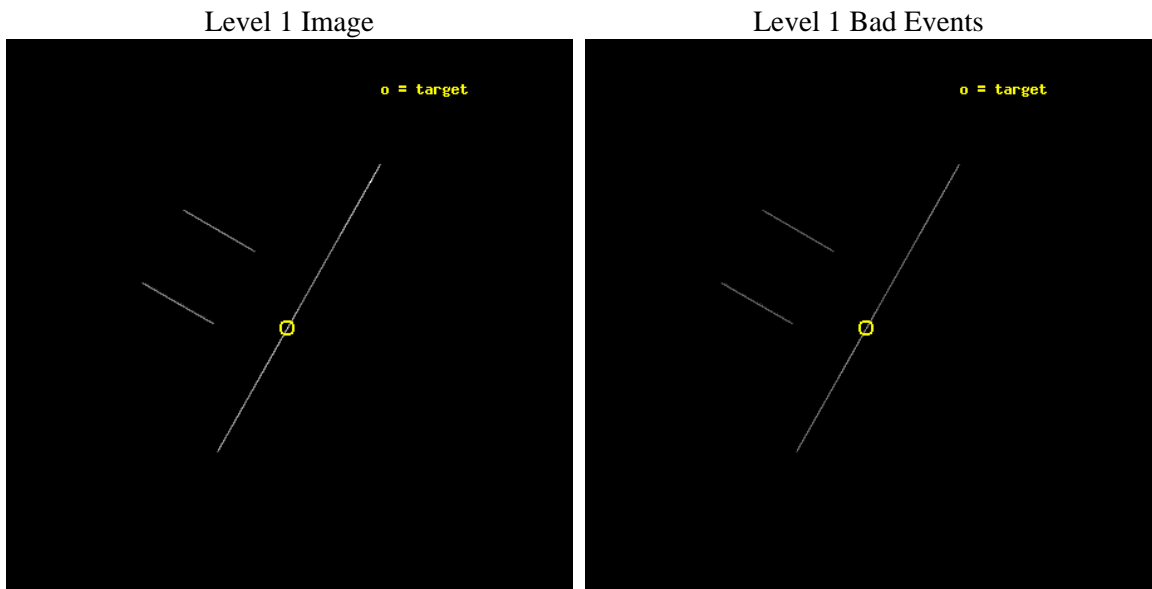
seq_num	400273	Sequence number
obs_id	3786	Observation id
title	MONITORING THE SPECTRAL VARIABILITY OF THE ULTRALUMINOUS X-RAY SOURCE IN HOLMBERG IX	Proposal title
observer	Dr. Patrick Slane	Principal investigator
object	1E0953.8+6918	Source name
ra_targ	149.470833	Observer's specified target RA [deg]
dec_targ	69.064167	Observer's specified target Dec [deg]
ra_nom	149.46168152804	Nominal RA [deg]
dec_nom	69.073242646213	Nominal Dec [deg]
roll_nom	119.76144497943	Nominal Roll [deg]
revision	5	Processing version of data
ontime	15989.25	Sum of GTIs [s]
livetime	15926.791992188	Livetime [s]
ontime2	15989.25	Sum of GTIs [s]
ontime3	15989.25	Sum of GTIs [s]
ontime5	15989.25	Sum of GTIs [s]
ontime6	15989.25	Sum of GTIs [s]
ontime7	15989.25	Sum of GTIs [s]
ontime8	15989.25	Sum of GTIs [s]
l2events	183760	Number of level 2 events



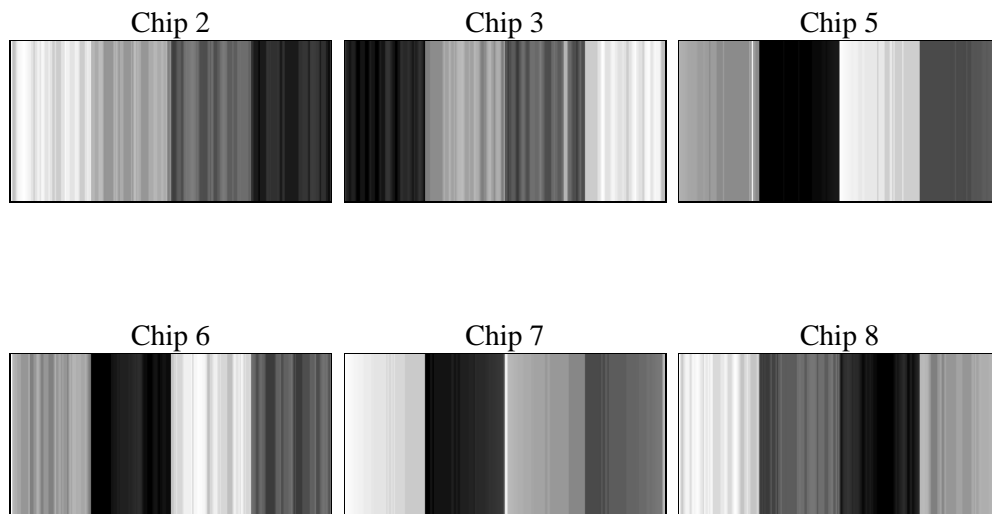
2 OBI

2.1 OBI

2.1.1 Images



2.1.2 Bias



2.1.3 Parameters

obi_num	1	Obi number	sched_exp_time	15000.000000	[s] Scheduled observation exposure time
ascdsver	8.4.5	Processing system revision	ontime	15989.25	Sum of GTIs [s]
caldsver	4.5.2	 	ontime2	15989.25	Sum of GTIs [s]
date	2012-10-19T18:13:22	Date and time of file creation	ontime3	15989.25	Sum of GTIs [s]
revision	5	Processing version of data	ontime5	15989.25	Sum of GTIs [s]
			ontime6	15989.25	Sum of GTIs [s]
			ontime7	15989.25	Sum of GTIs [s]
			ontime8	15989.25	Sum of GTIs [s]
			l1events	301620	Number of level 1 events

2.1.4 Events

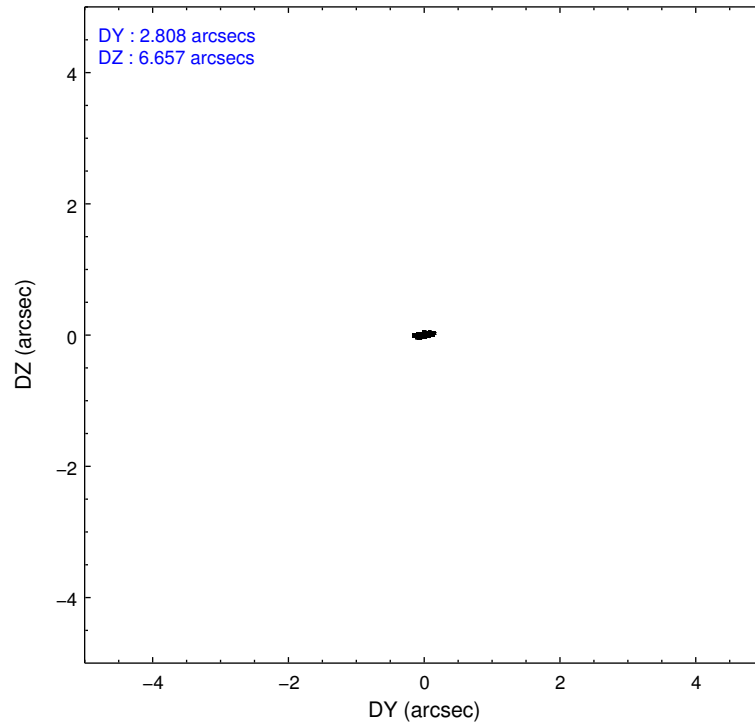
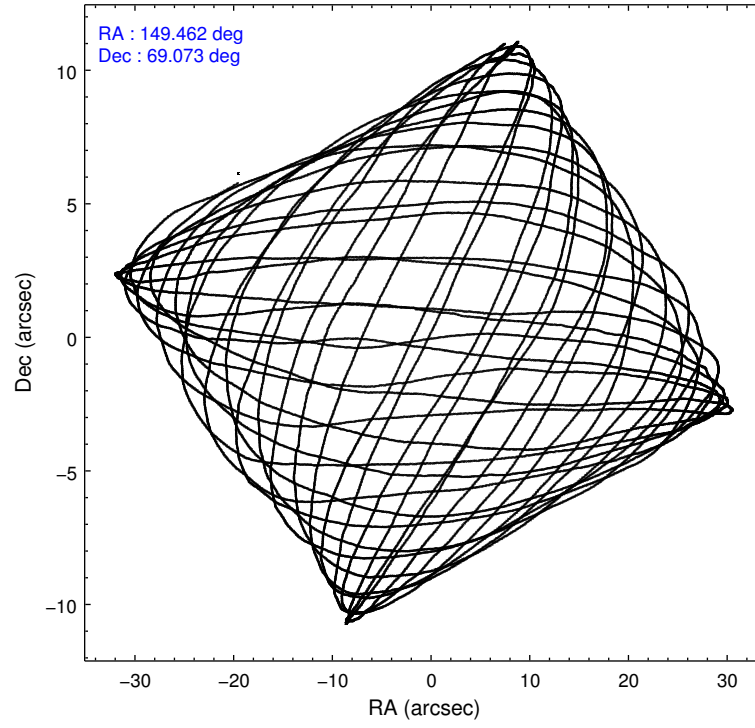
	ccd 2	ccd 3	ccd 5	ccd 6	ccd 7	ccd 8
level 1 events	18878	20607	123654	21675	77898	38908
rejected events	3600	3875	9824	4262	11741	5935
rejected %	19%	18%	7%	19%	15%	15%

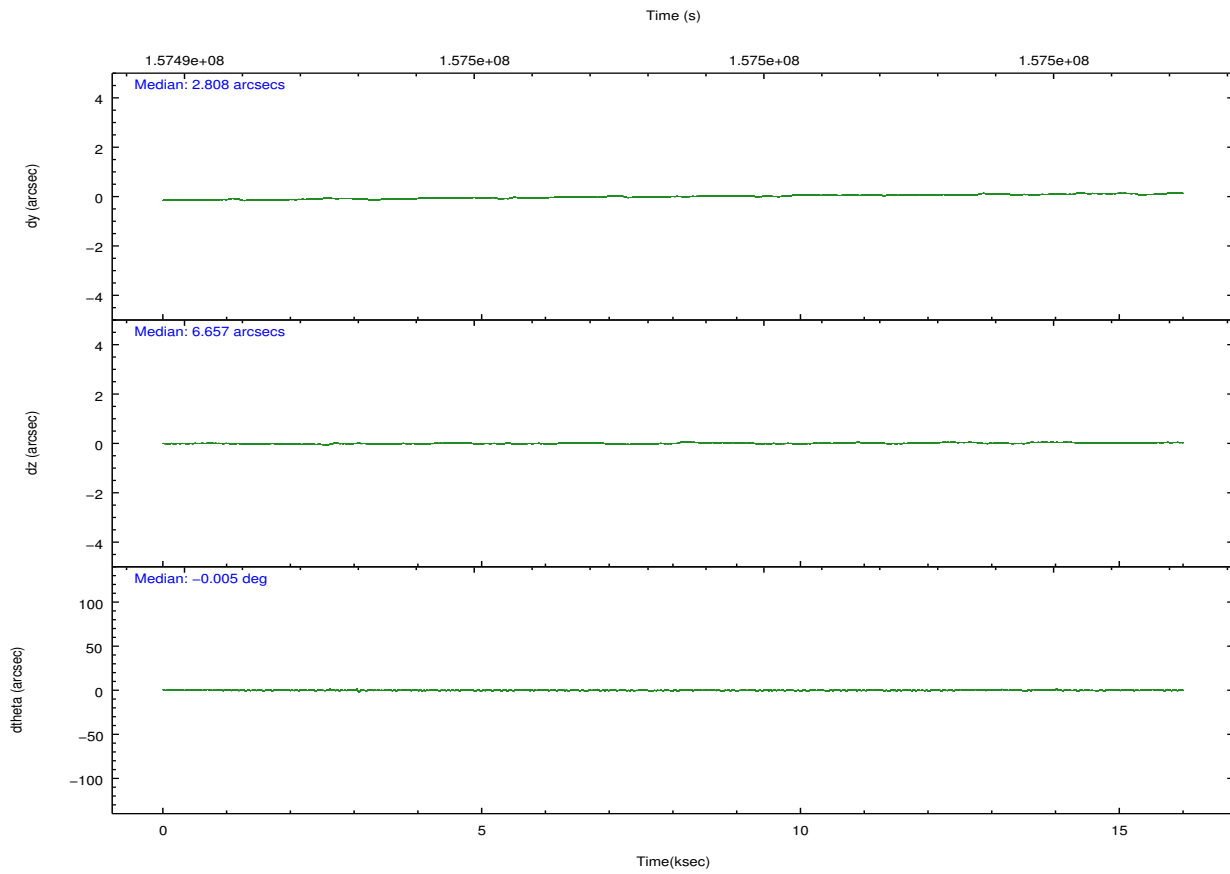
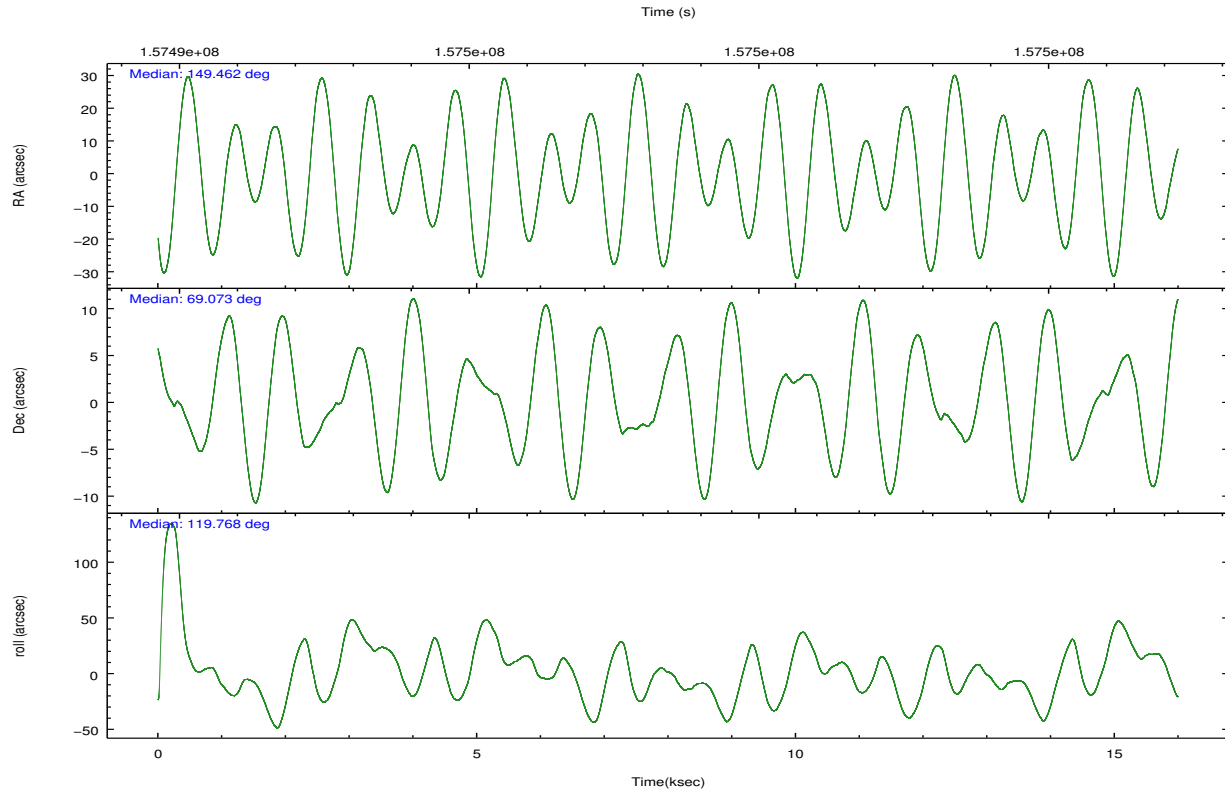
	ccd 2	ccd 3	ccd 5	ccd 6	ccd 7	ccd 8
grade 0 events	2224	2331	43850	2143	9069	6186
	11%	11%	35%	9%	11%	15%
grade 1 events	100	61	150	71	139	139
	0%	0%	0%	0%	0%	0%
grade 2 events	5597	6222	29108	6333	16367	10155
	29%	30%	23%	29%	21%	26%
grade 3 events	2088	2544	2001	2418	5840	3937
	11%	12%	1%	11%	7%	10%
grade 4 events	2159	2203	1953	2338	5752	3907
	11%	10%	1%	10%	7%	10%
grade 5 events	3431	3742	9212	4126	11246	5650
	18%	18%	7%	19%	14%	14%
grade 6 events	3279	3504	37380	4246	29485	8934
	17%	17%	30%	19%	37%	22%
grade 7 events	0	0	0	0	0	0
	0%	0%	0%	0%	0%	0%

2.2 Compared Parameters

Parameter	Planned	Actual	Parameter	Planned	Actual
Instrument	ACIS	ACIS	Obspar format version number	7	7
Detector	ACIS-235678	ACIS-235678	Obspar file type	PREDICTED	ACTUAL
Grating	NONE	NONE	Obspar update status	NONE	UPDATED
Data mode	CC33_FAINT	CC33_FAINT	Number of optional ACIS chips dropped	0	0
Observation mode	POINTING	POINTING	On-chip summing requested	N	N
[deg] Pointing RA	149.528070	149.4616815280377	Subarray requested	NONE	NONE
[deg] Pointing Dec	69.059883	69.07324264621339	Alternating exposures requested	N	N
[deg] Pointing Roll	119.542789	119.7614449794288	[s] Primary exposure time	0.000000	0
[mm] SIM focus pos	-0.684267	-0.6828225247311905			
[mm] SIM defocus	0	0.001444936568705701			
[mm] SIM translation stage pos	-190.132523	-190.1425803651734			
[mm] SIM translation stage offset	0	0.01005778216563158			
[s] Observation start time (MET)	157491431.184000	157490064.23074			
Observation start date	2002-12-28T19:36:07	2002-12-28T19:14:24			
[s] Observation end time (MET)	157506431.184000	157507206.33145			
Observation end date	2002-12-28T23:46:07	2002-12-29T00:00:06			
Read mode	CONTINUOUS	CONTINUOUS			

2.3 Aspect



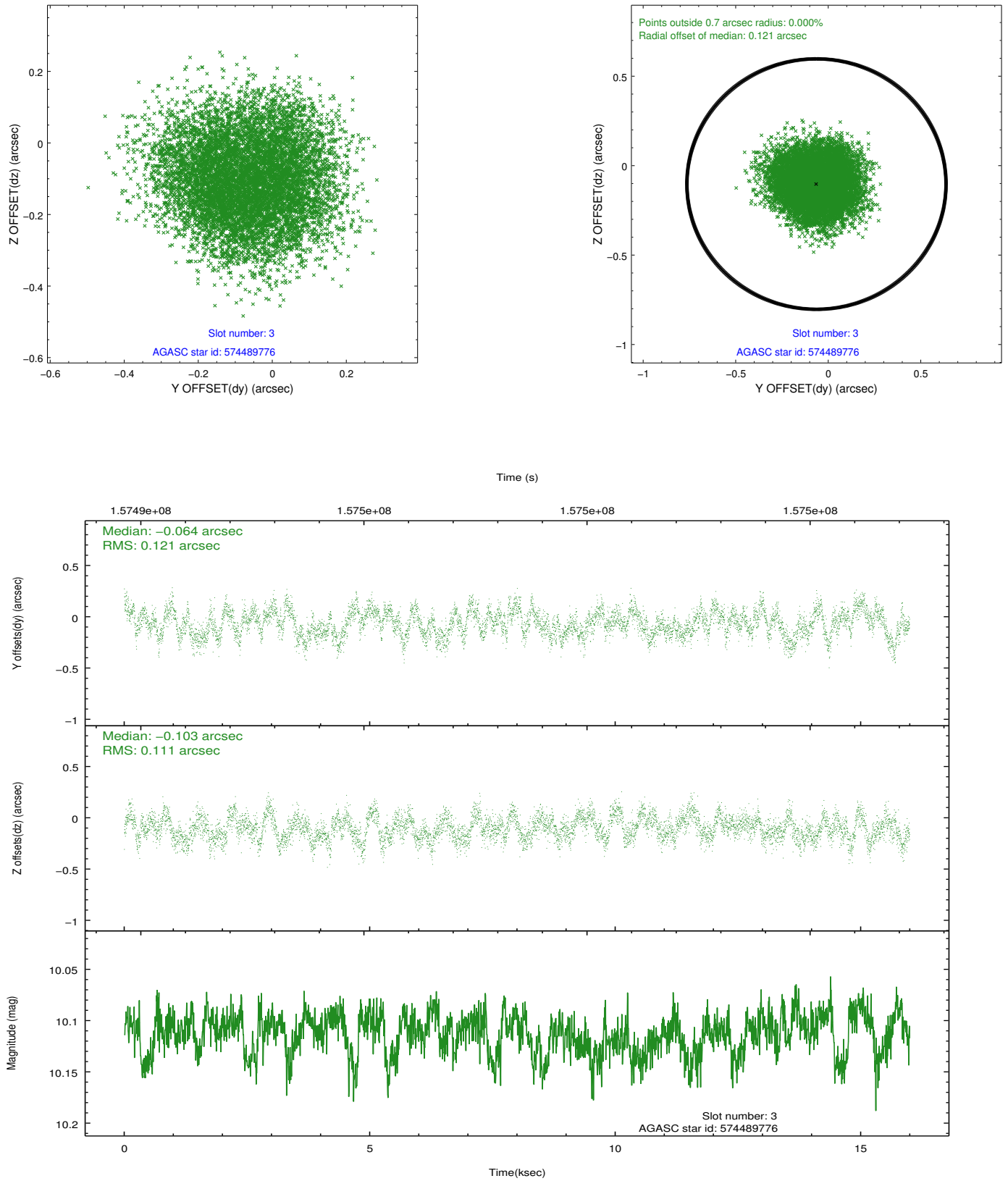


Slot Statistics

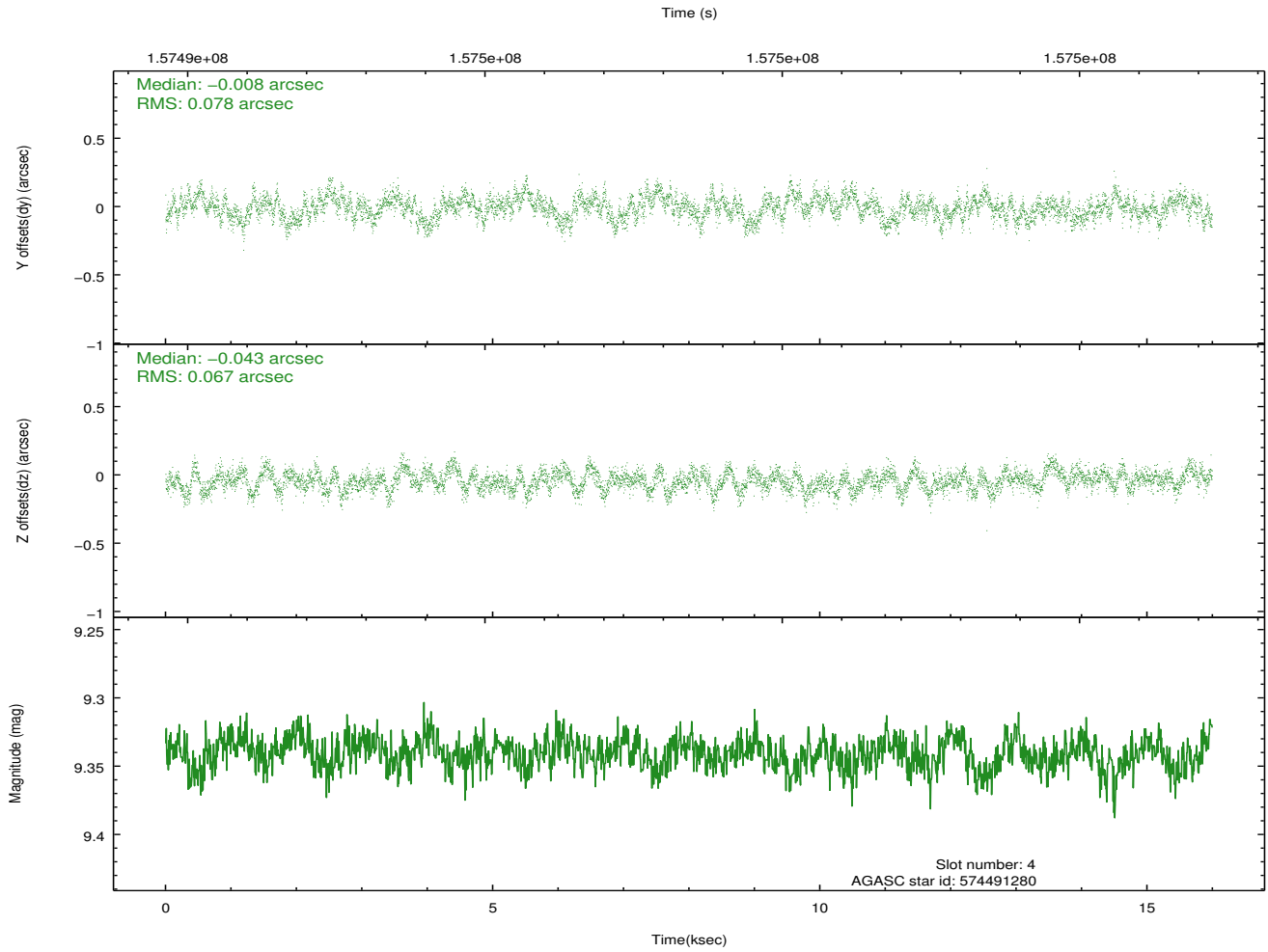
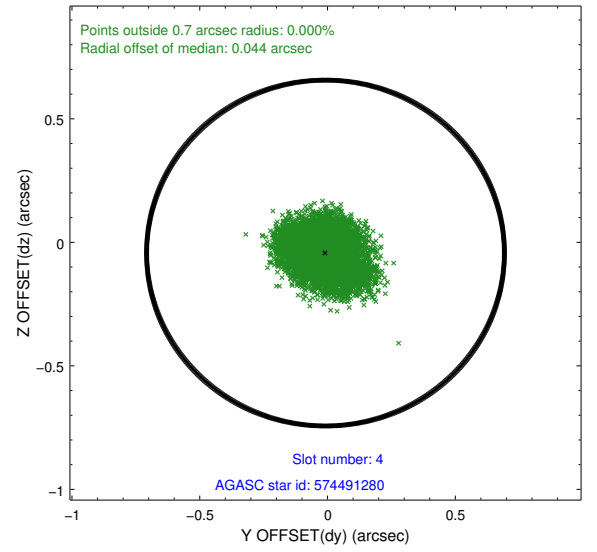
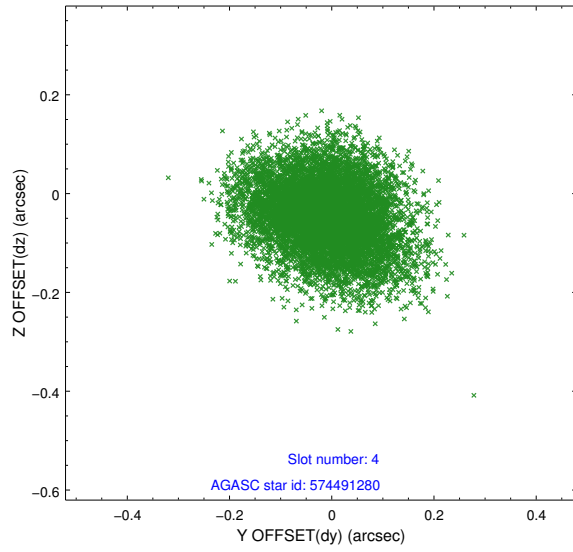
slot	status	id	mag	n_pts	med_dy	med_dz	dr1	dr2	ra	dec	mean_y	mean_z
0	FID	ACIS-S-2	7.11	3901	-0.032	0.003	0.007	0.012	0.000000	0.000000	-755.44	-1727.77
1	FID	ACIS-S-4	7.21	3900	0.003	0.014	0.006	0.011	0.000000	0.000000	2157.71	180.48
2	FID	ACIS-S-5	7.24	3901	-0.003	-0.009	0.007	0.012	0.000000	0.000000	-1807.93	174.38
3	GUIDE	574489776	10.11	7796	-0.064	-0.103	0.179	0.271	148.323662	69.046710	737.06	1364.63
4	GUIDE	574491280	9.34	7788	-0.008	-0.043	0.109	0.178	148.611567	69.450135	1801.37	311.03
5	OMITTED		0.00	0	0.000	0.000	0.000	0.000	0.000000	0.000000	0.00	0.00
6	GUIDE	574496312	10.26	7789	0.069	0.075	0.226	0.341	149.547505	68.718299	-1081.49	584.57
7	GUIDE	574496080	9.91	3899	0.022	0.132	0.169	0.273	149.336129	69.802025	2442.22	-1109.79

2.4 Star Slots

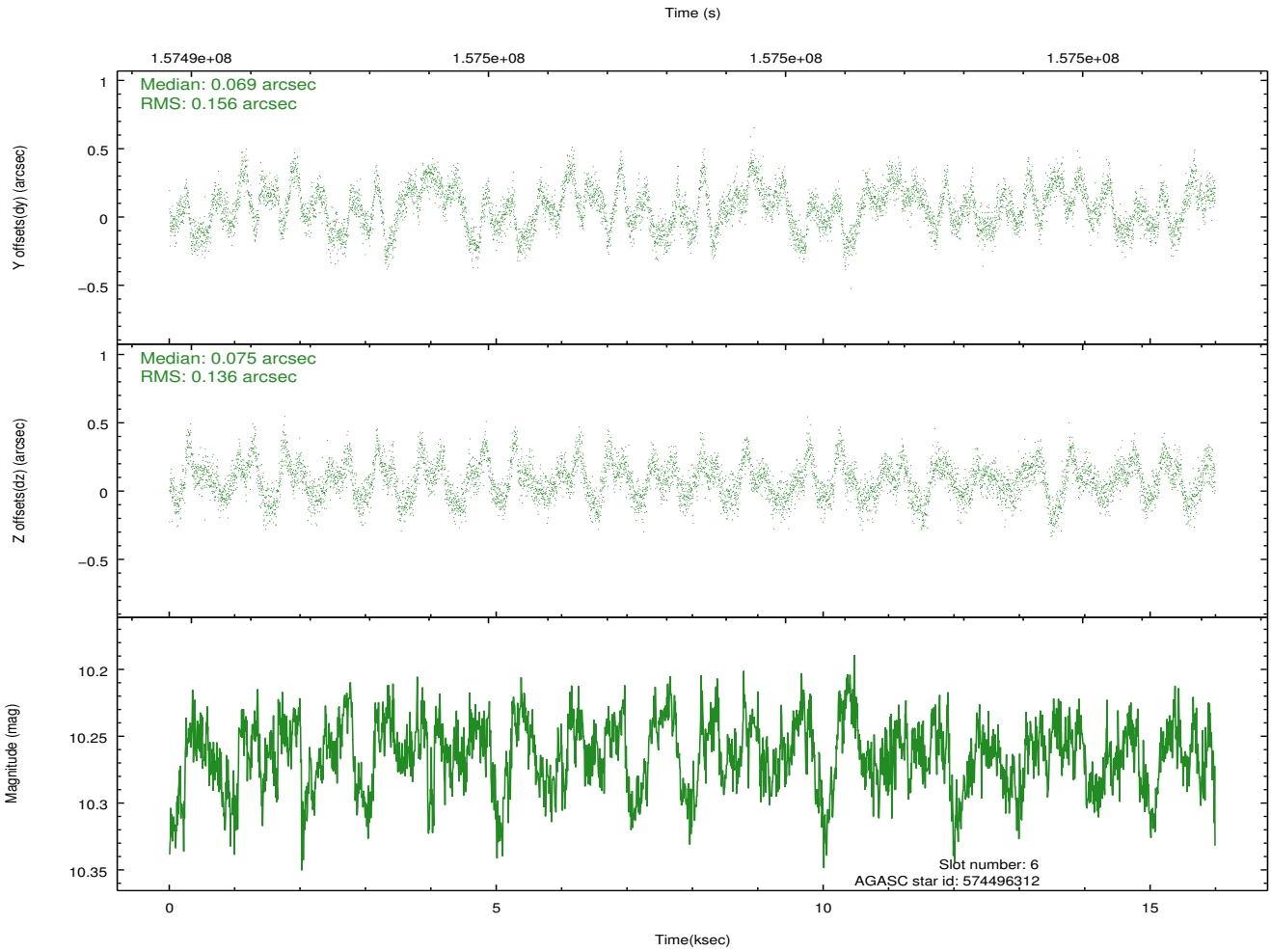
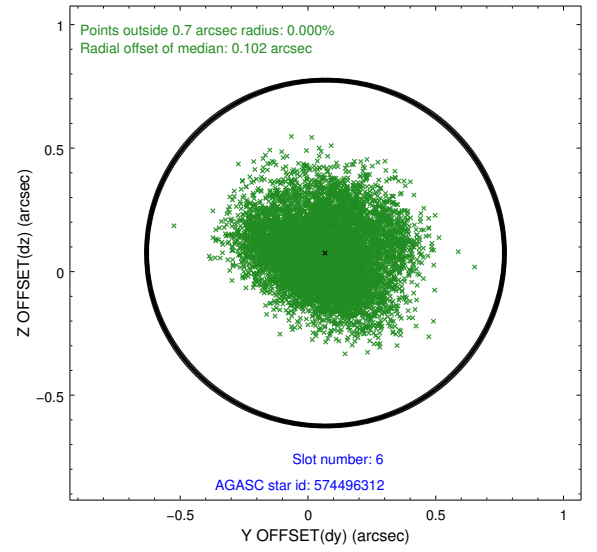
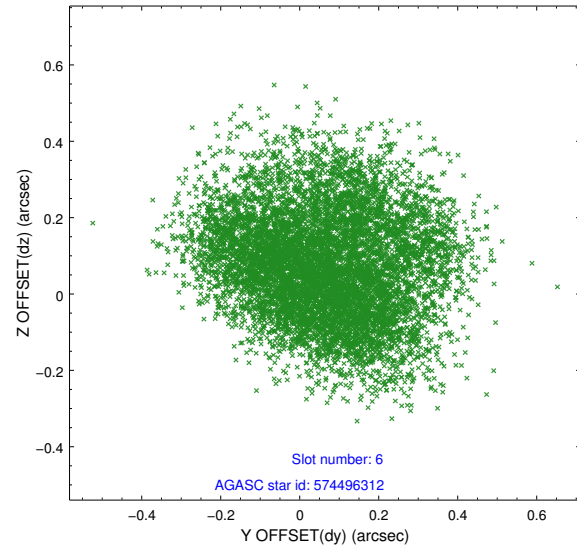
2.4.1 Slot 3



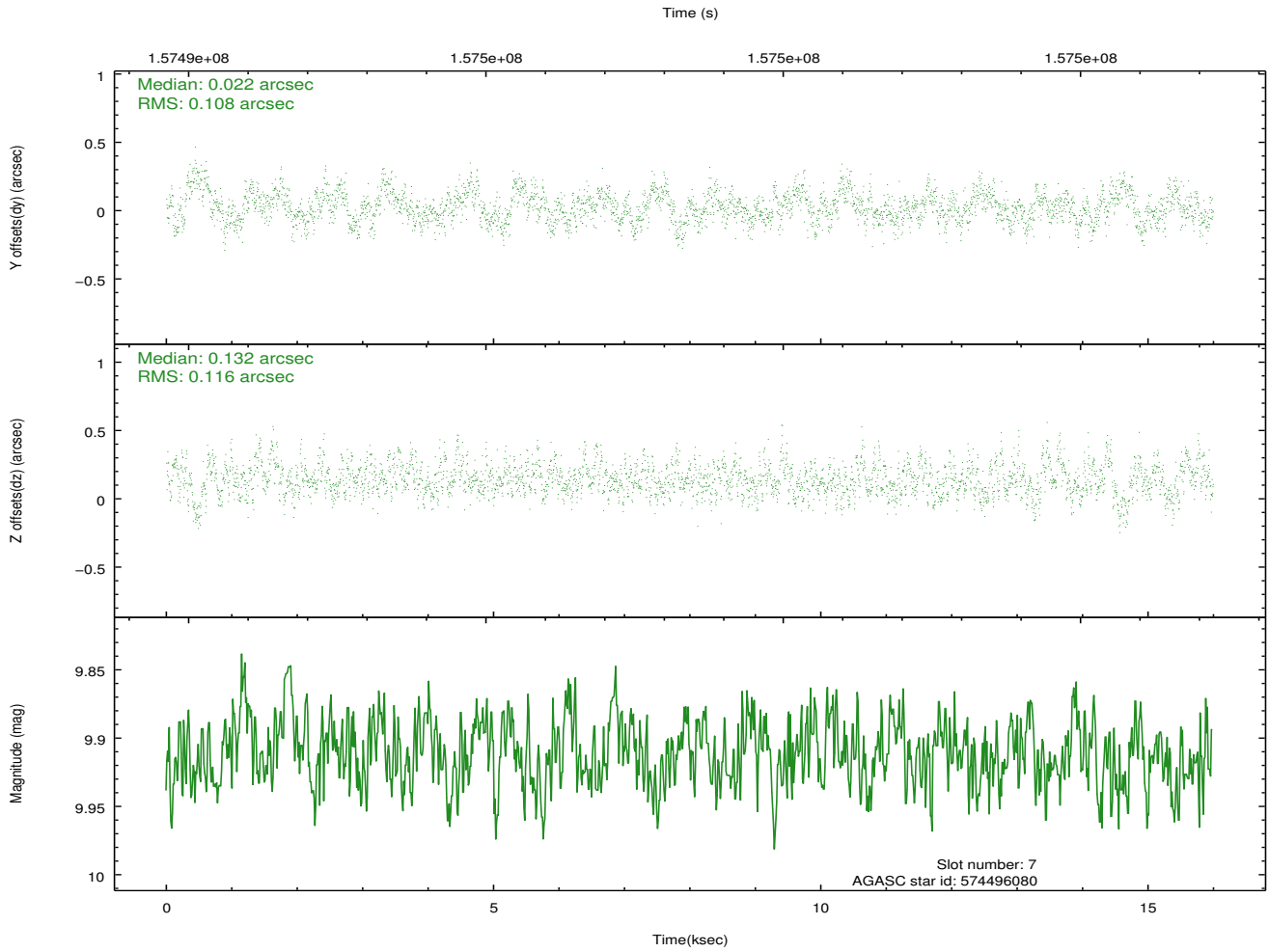
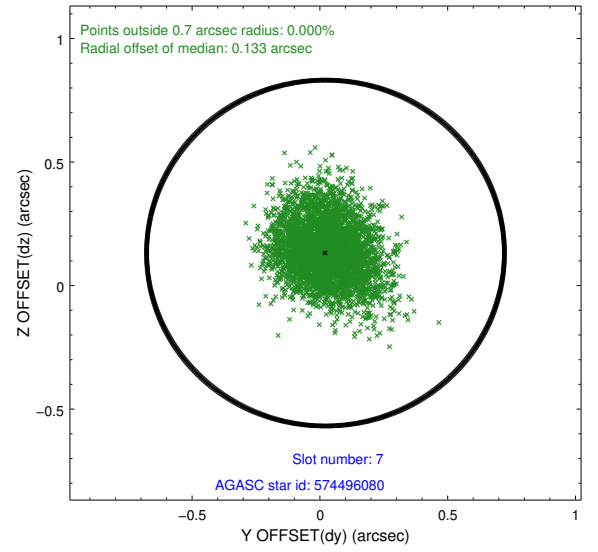
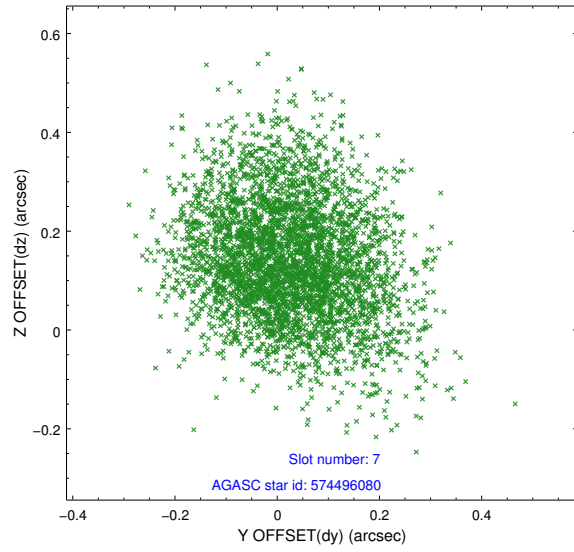
2.4.2 Slot 4



2.4.3 Slot 6

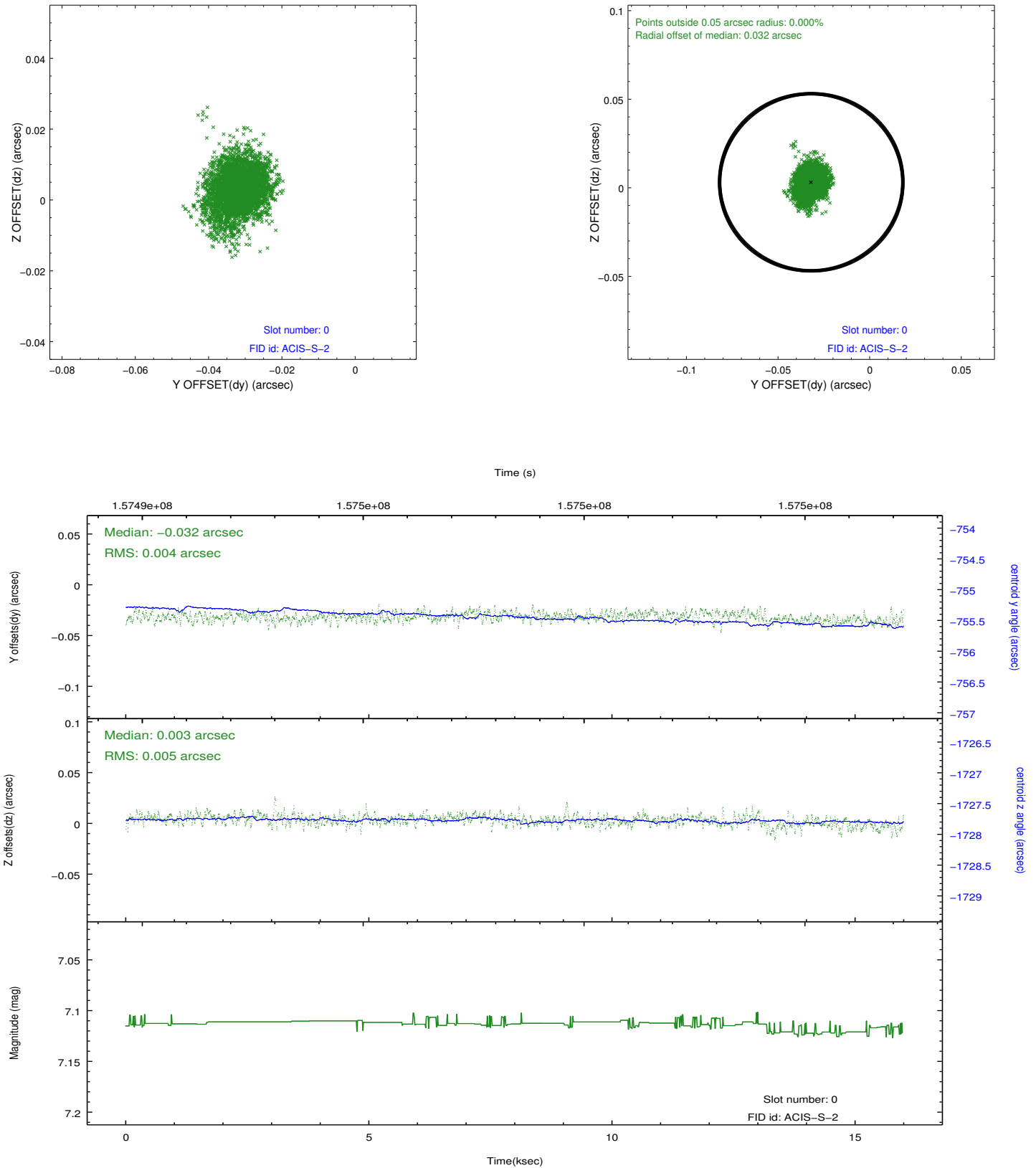


2.4.4 Slot 7

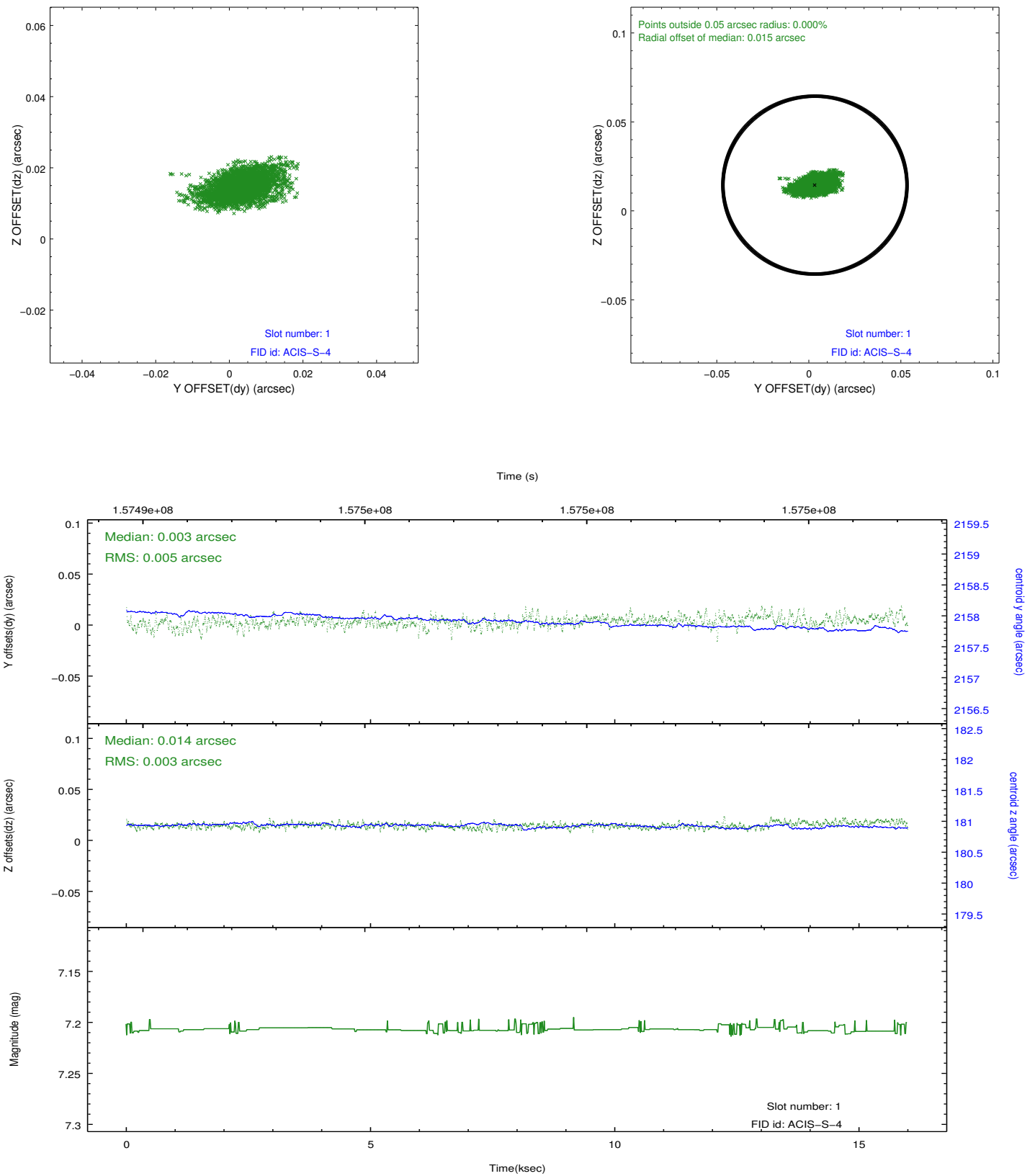


2.5 FID Slots

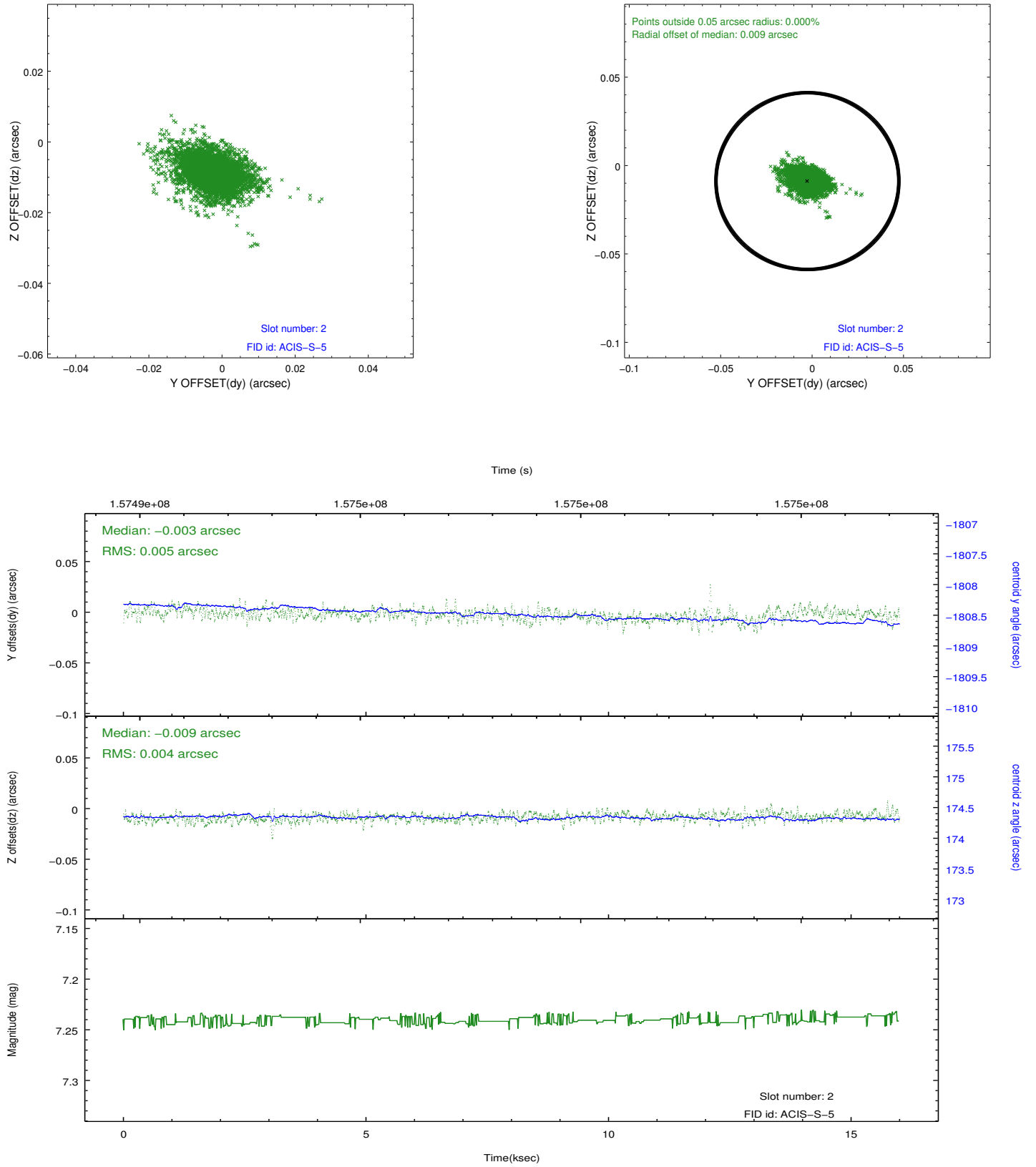
2.5.1 Slot 0



2.5.2 Slot 1



2.5.3 Slot 2



A Summary

A.1 Status

V&V Scientist	Joy Nichols
V&V Date (YYYY-MM-DD)	2012.11.06
V&V Edition	1
V&V Disposition and Status	OK
V&V Charge Time	15.989

A.2 Comments

The guide star in slot 5 was removed from the aspect solution due to poor data quality. The aspect solution is improved by the removal of this guide star from the solution.