

V&V Reference Report

L2 ASCDS Version : 7.6.9

Observation 3786 - L2 Version 002
Chandra X-Ray Center

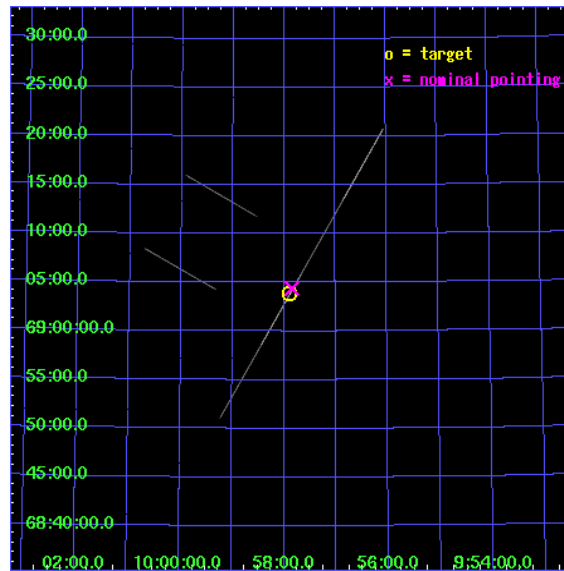
L2 Processing Date : Oct 31 2006

Contents

1	Front	2
2	OBI	3
2.1	OBI	3
2.1.1	Images	3
2.1.2	Bias	3
2.1.3	Parameters	4
2.1.4	Events	4
2.2	Compared Parameters	5
2.3	Aspect	6
2.4	Star Slots	9
2.4.1	Slot 3	9
2.4.2	Slot 4	10
2.4.3	Slot 6	11
2.4.4	Slot 7	12
2.5	FID Slots	13
2.5.1	Slot 0	13
2.5.2	Slot 1	14
2.5.3	Slot 2	15
A	Summary	16
A.1	Status	16
A.2	Comments	16

1 Front

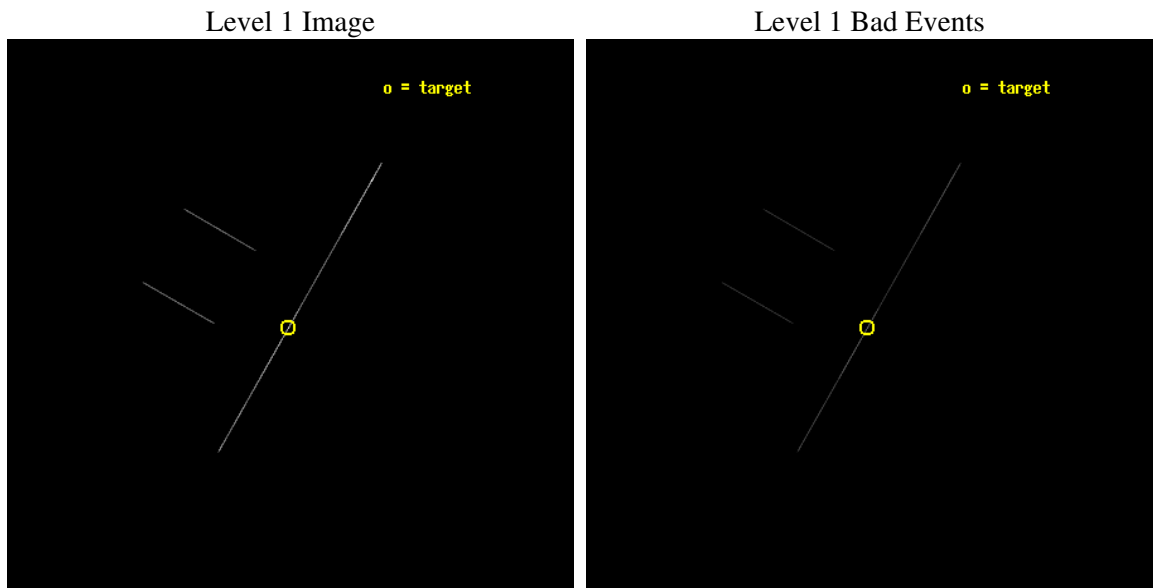
seq_num	400273
obs_id	3786
title	MONITORING THE SPECTRAL VARIABILITY OF THE ULTRALUMINOUS X-RAY SOURCE IN HOLMBERG IX
observer	Dr. Patrick Slane
object	1E0953.8+6918
ra_targ	149.470833
dec_targ	69.064167
ra_nom	149.46168152804
dec_nom	69.073242646213
roll_nom	119.76144497943
revision	4
ontime	15989.25
livetime	15926.791992188
ontime2	15989.25
ontime3	15989.25
ontime5	15989.25
ontime6	15989.25
ontime7	15989.25
ontime8	15989.25
l2events	187878



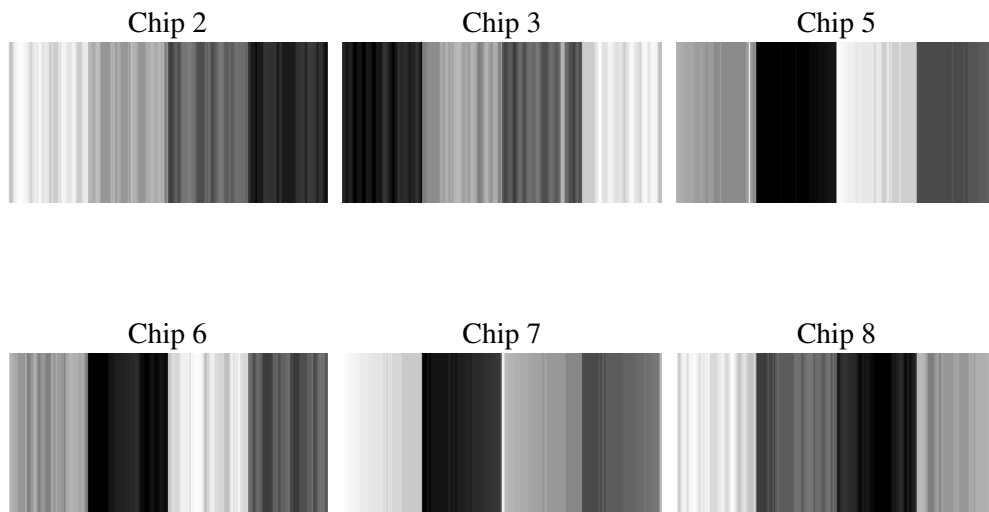
2 OBI

2.1 OBI

2.1.1 Images



2.1.2 Bias



2.1.3 Parameters

obi_num	1
ascdsver	7.6.9
caldsver	3.2.3
date	2006-10-31T21:08:37
revision	4

sched_exp_time	15000.000000
ontime	16062.763081402
ontime2	16062.672732174
ontime3	16062.761976689
ontime5	16062.762816399
ontime6	16062.762955785
ontime7	16062.763081402
ontime8	16062.763217449
l1events	301620

2.1.4 Events

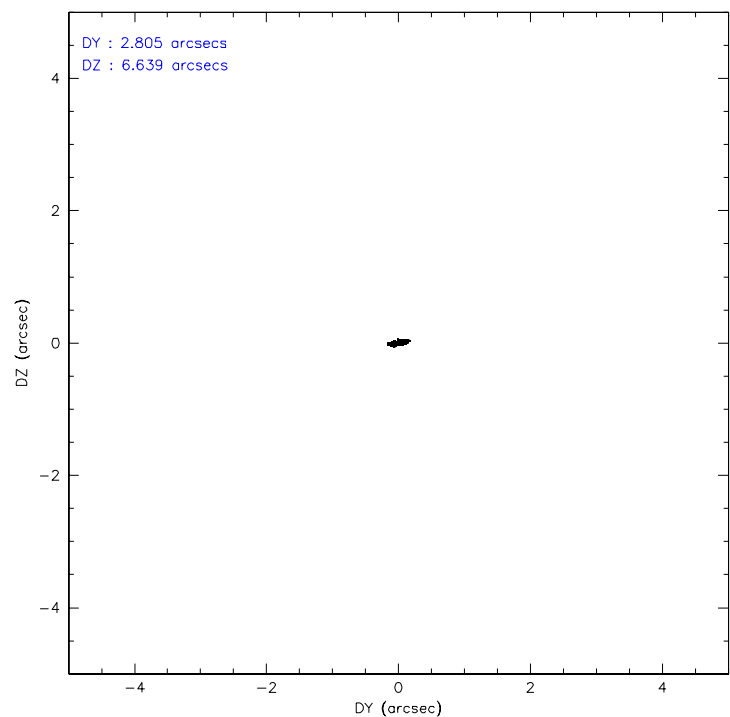
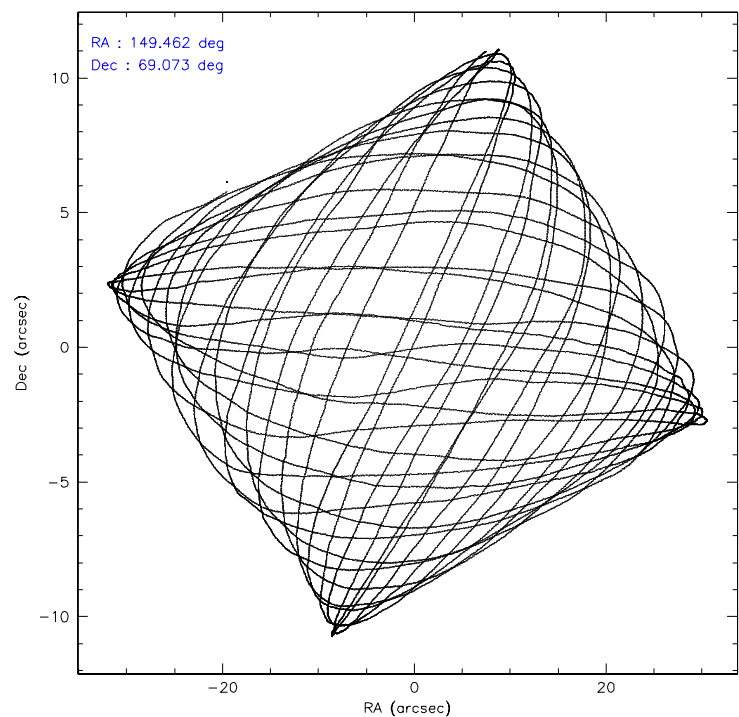
	ccd 2	ccd 3	ccd 5	ccd 6	ccd 7	ccd 8
level 1 events	18878	20607	123654	21675	77898	38908
rejected events	3596	3873	8369	4261	10161	5933
rejected %	19%	18%	6%	19%	13%	15%

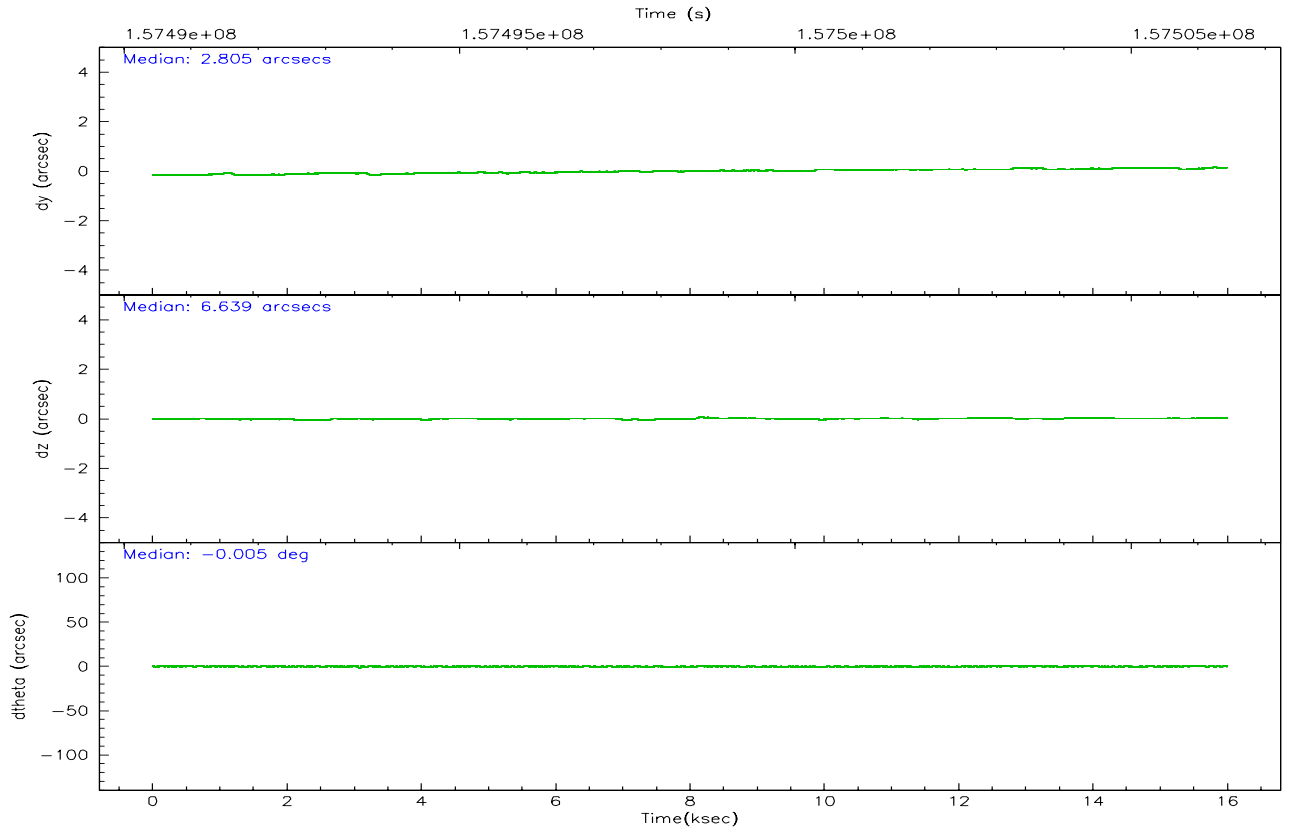
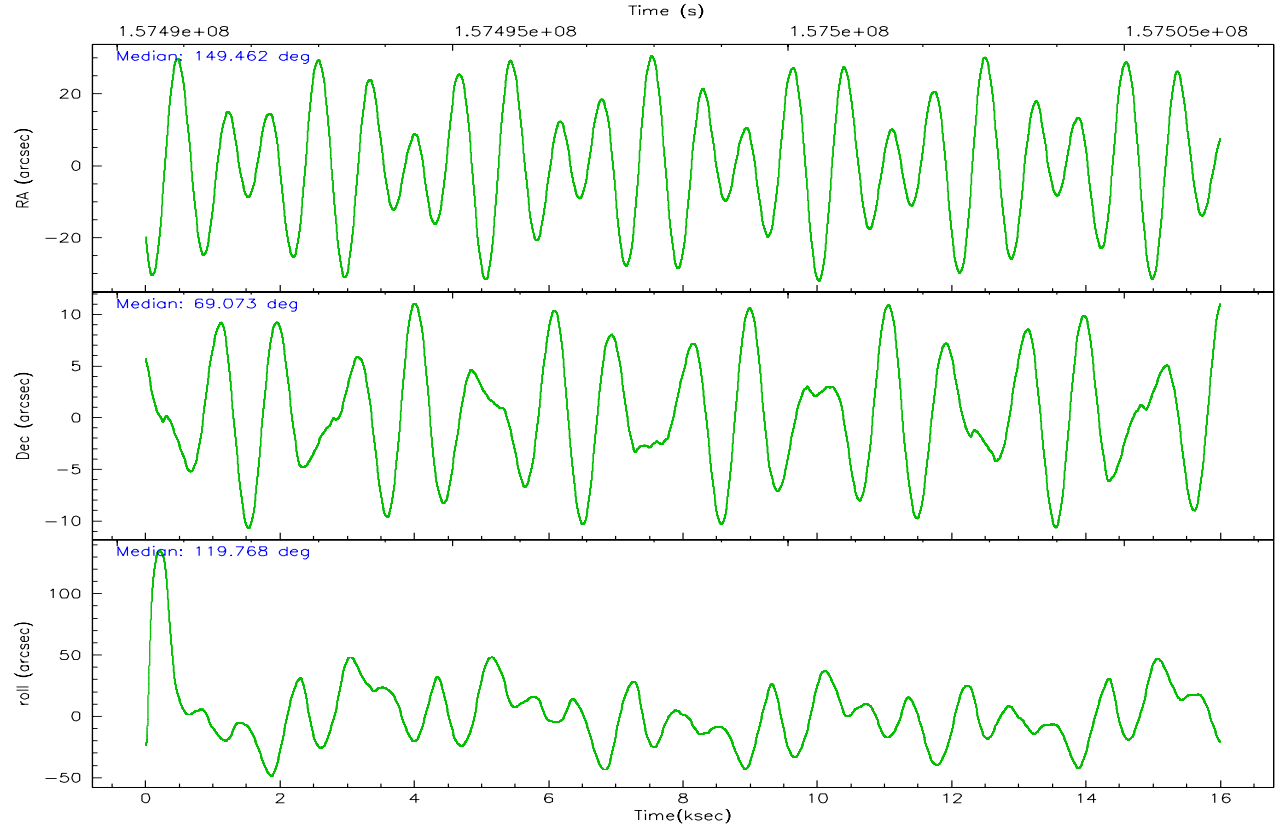
	ccd 2	ccd 3	ccd 5	ccd 6	ccd 7	ccd 8
grade 0 events	2224	2326	42986	2140	7133	6182
	11%	11%	34%	9%	9%	15%
grade 1 events	100	61	94	71	94	139
	0%	0%	0%	0%	0%	0%
grade 2 events	5597	6227	28724	6336	17899	10159
	29%	30%	23%	29%	22%	26%
grade 3 events	2088	2543	1516	2418	4049	3935
	11%	12%	1%	11%	5%	10%
grade 4 events	2159	2203	1493	2338	3904	3905
	11%	10%	1%	10%	5%	10%
grade 5 events	3427	3740	7805	4125	9707	5648
	18%	18%	6%	19%	12%	14%
grade 6 events	3283	3507	41036	4247	35112	8940
	17%	17%	33%	19%	45%	22%
grade 7 events	0	0	0	0	0	0
	0%	0%	0%	0%	0%	0%

2.2 Compared Parameters

Parameter	Planned	Actual	Parameter	Planned	Actual
Instrument	ACIS	ACIS	Obspar format version number	6	6
Detector	ACIS-235678	ACIS-235678	Obspar file type	PREDICTED	ACTUAL
Grating	NONE	NONE	Obspar update status	NONE	UPDATED
Observation mode	POINTING	POINTING	Number of optional ACIS chips dropped	0	0
Pointing RA	149.528070	149.4616815280377	On-chip summing requested	N	N
Pointing Dec	69.059883	69.07324264621337	Subarray requested	NONE	NONE
Pointing Roll	119.542789	119.7614449794288	Alternating exposures requested	N	N
SIM focus pos (mm)	-0.684267	-0.6828225247311905	Primary exposure time	0.000000	0
SIM defocus (mm)	0	0.001444936568705701			
SIM translation stage pos (mm)	-190.132523	-190.1425803651734			
SIM translation stage offset (mm)	0	0.01005778216563158			
Observation start time	157491431.184000	157490064.23074			
Observation start date	2002-12-28T19:36:07	2002-12-28T19:14:24			
Observation end time	157506431.184000	157507206.33145			
Observation end date	2002-12-28T23:46:07	2002-12-29T00:00:06			
Read mode	CONTINUOUS	CONTINUOUS			

2.3 Aspect



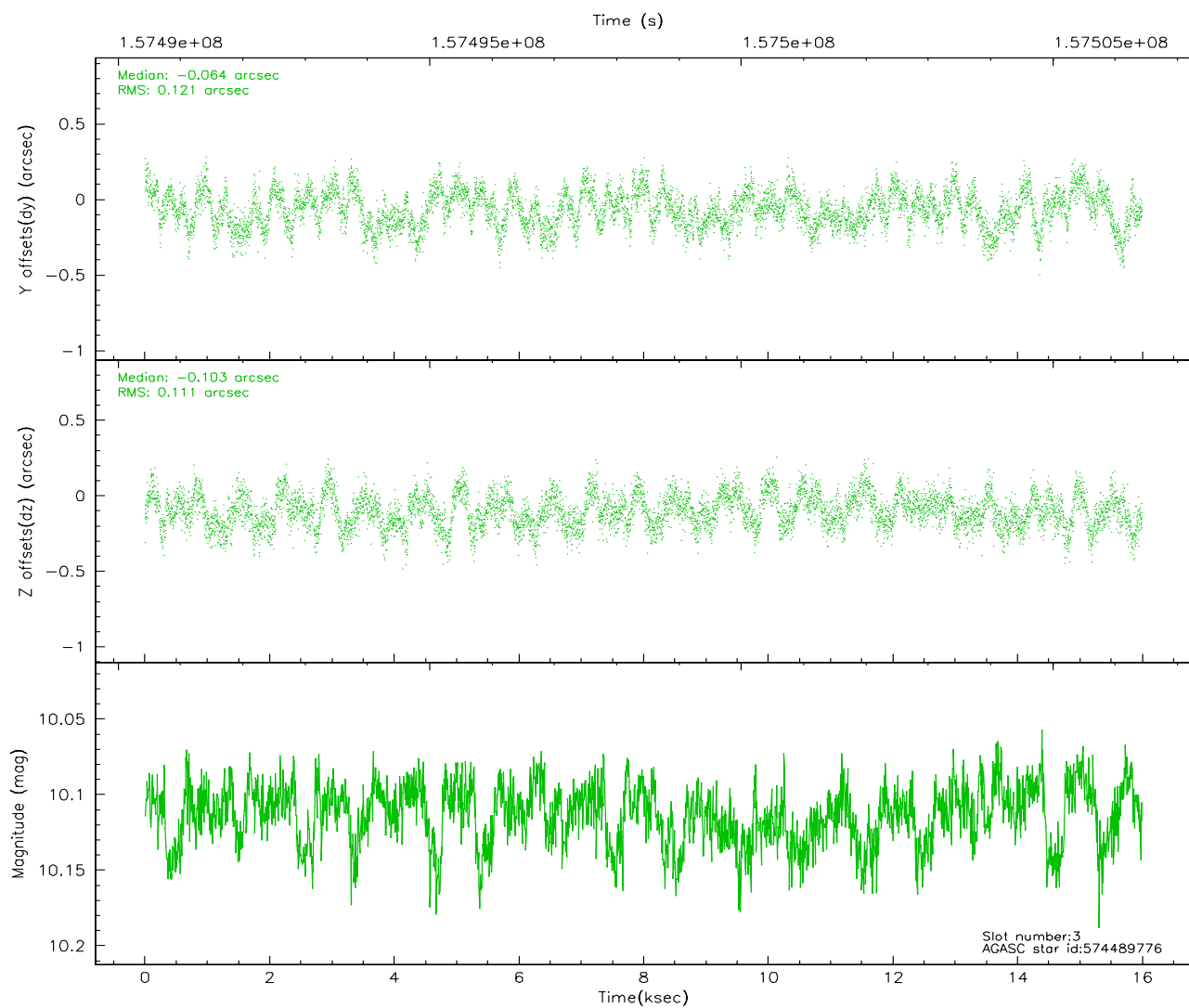
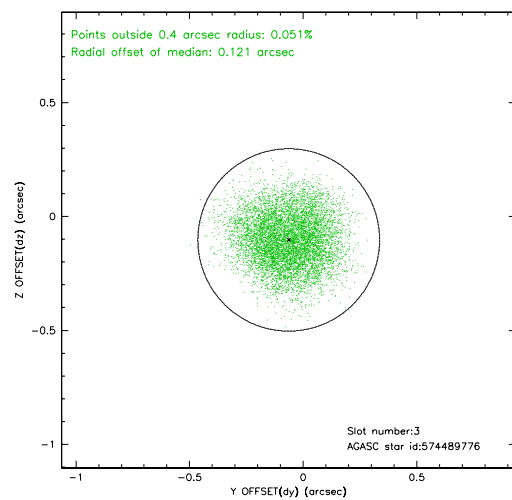
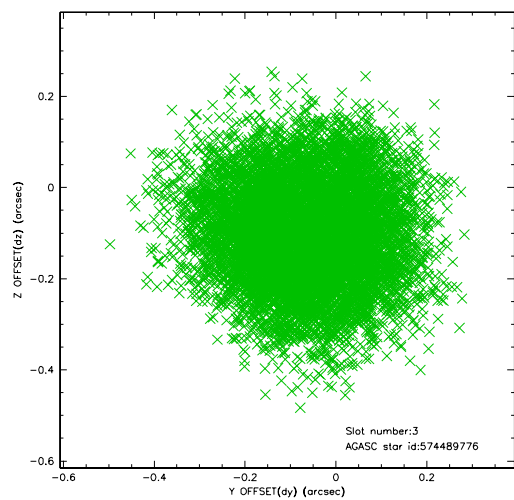


Slot Statistics

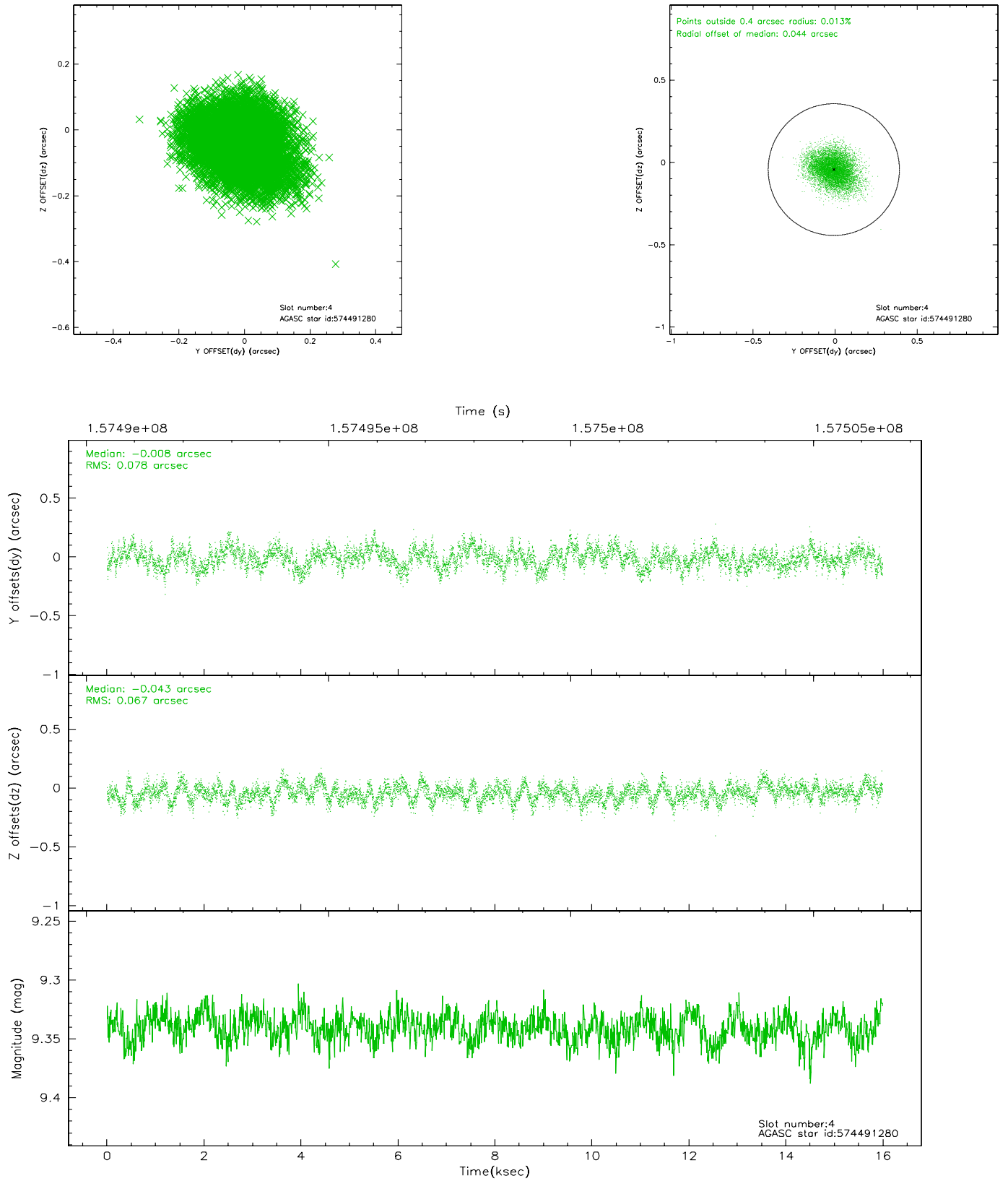
slot	status	id	mag	n_pts	med_dy	med_dz	dr1	dr2	ra	dec	mean_y	mean_z
0	FID	ACIS-S-2	7.11	3901	-0.020	0.027	0.007	0.012	0.000000	0.000000	-755.43	-1727.73
1	FID	ACIS-S-4	7.21	3900	-0.039	0.003	0.006	0.010	0.000000	0.000000	2157.67	180.49
2	FID	ACIS-S-5	7.24	3901	0.028	-0.020	0.007	0.011	0.000000	0.000000	-1807.90	174.39
3	GUIDE	574489776	10.11	7796	-0.064	-0.103	0.179	0.271	148.323662	69.046710	737.06	1364.63
4	GUIDE	574491280	9.34	7788	-0.008	-0.043	0.109	0.178	148.611567	69.450135	1801.37	311.03
5	OMITTED		0.00	0	0.000	0.000	0.000	0.000	0.000000	0.000000	0.00	0.00
6	GUIDE	574496312	10.26	7789	0.069	0.075	0.226	0.341	149.547505	68.718299	-1081.49	584.57
7	GUIDE	574496080	9.91	3899	0.022	0.132	0.169	0.273	149.336129	69.802025	2442.22	-1109.79

2.4 Star Slots

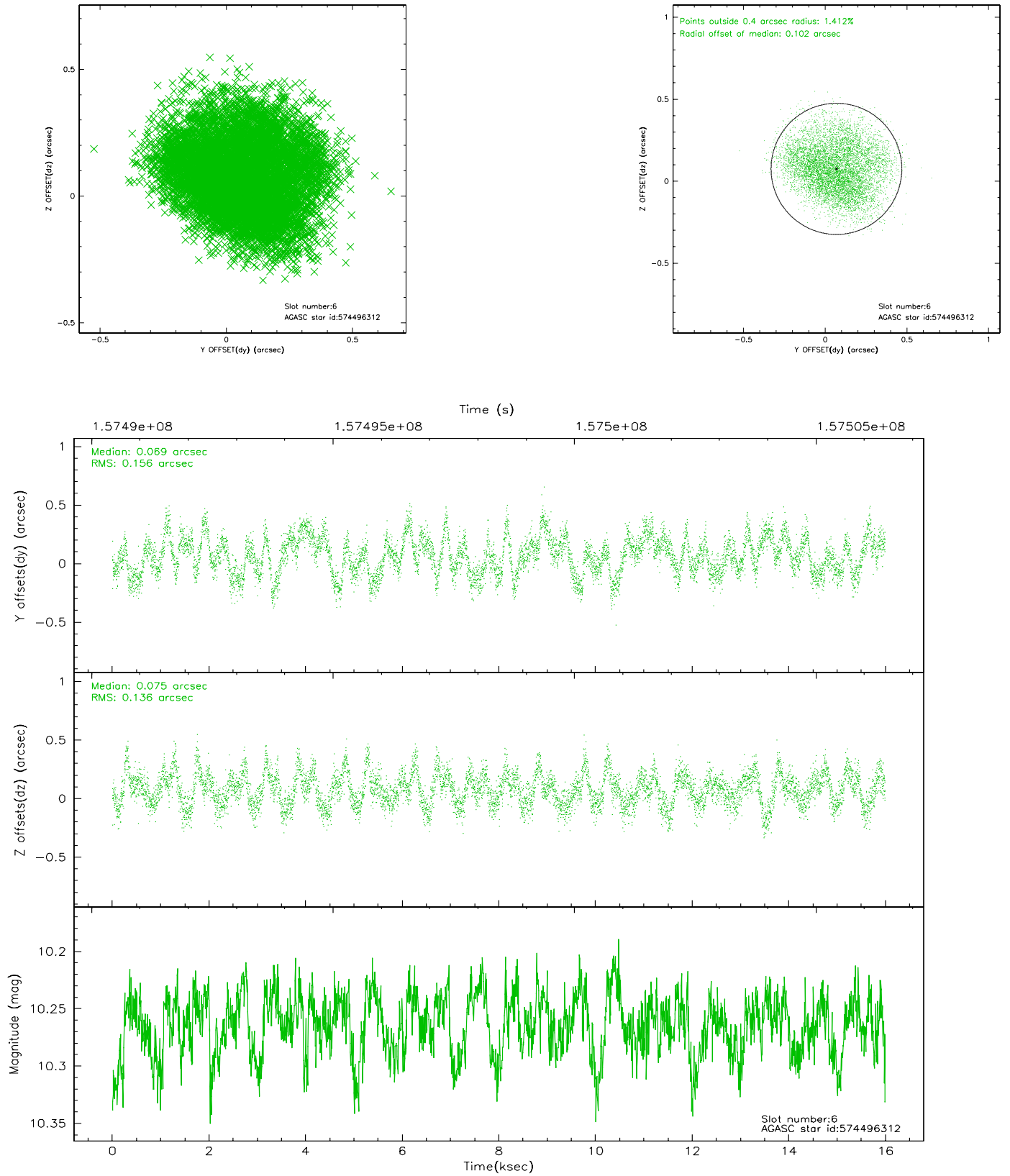
2.4.1 Slot 3



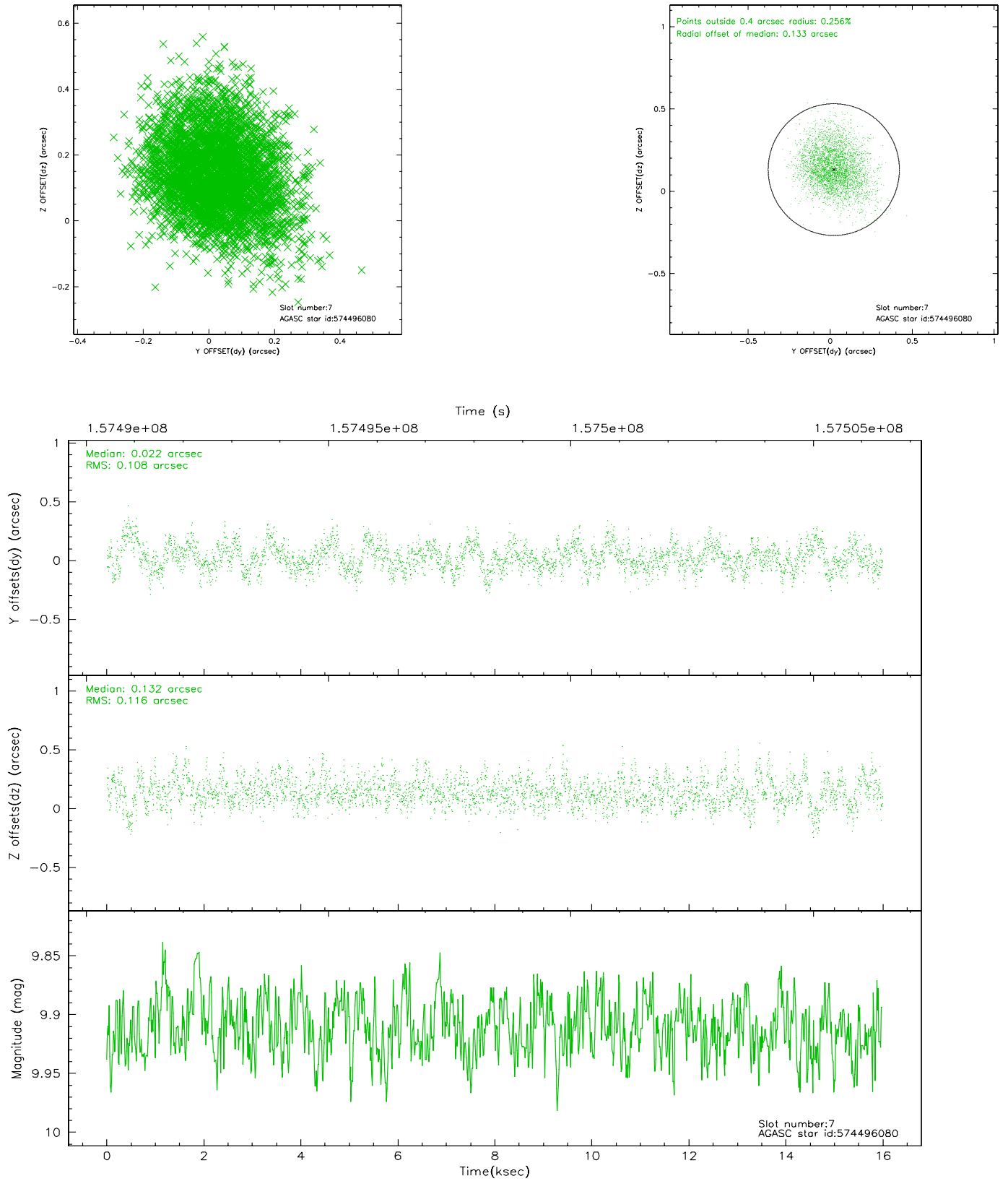
2.4.2 Slot 4



2.4.3 Slot 6

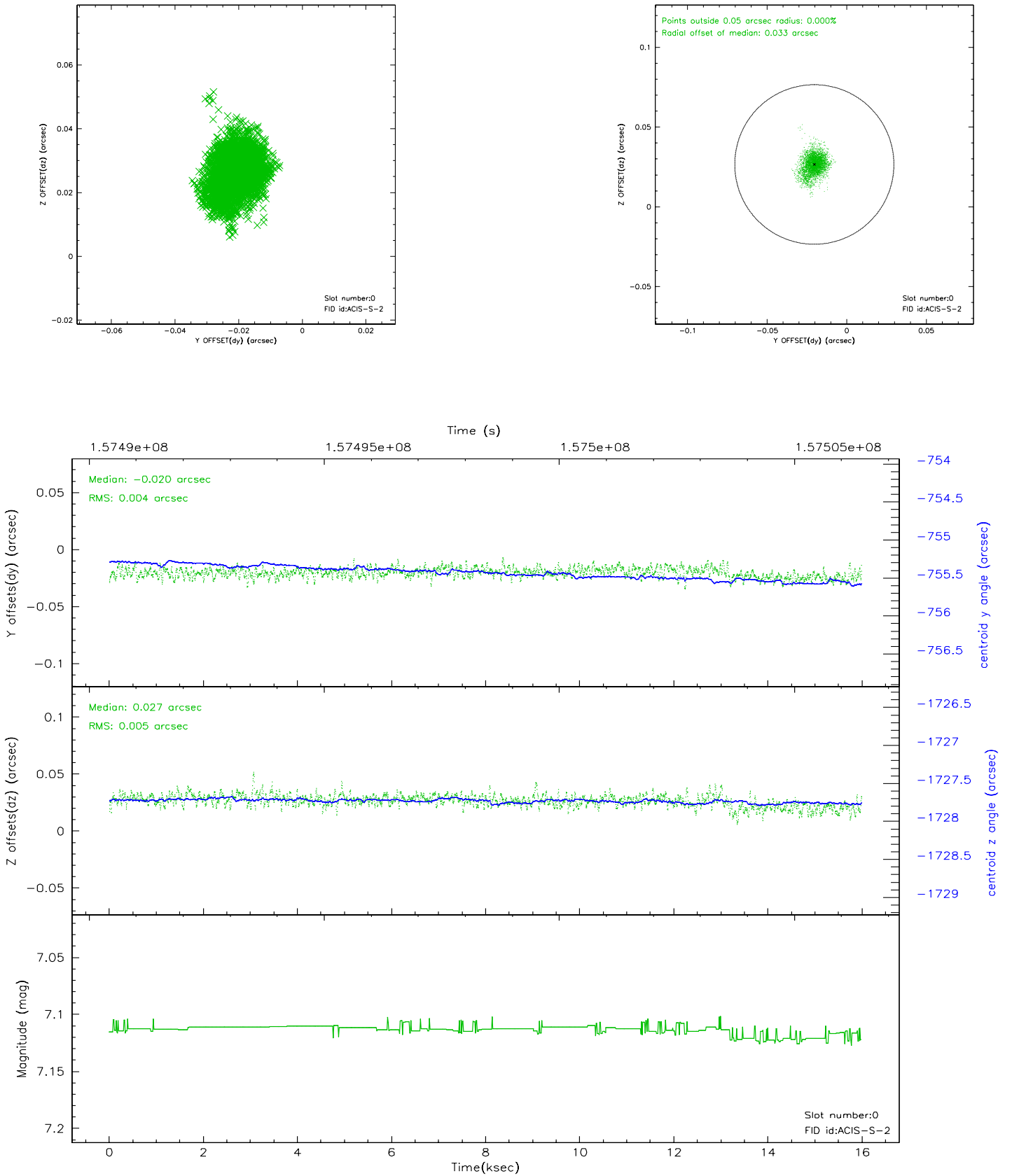


2.4.4 Slot 7

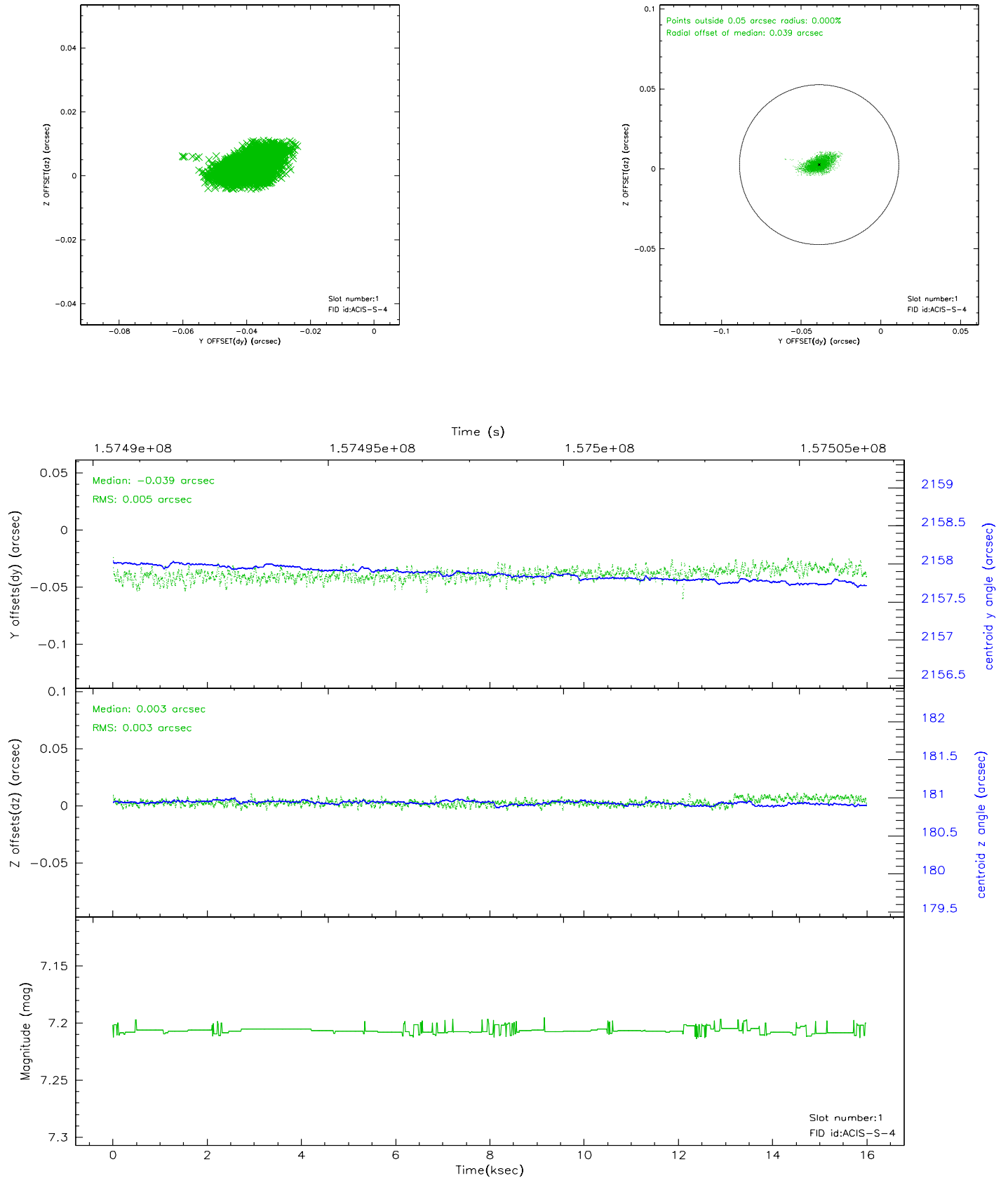


2.5 FID Slots

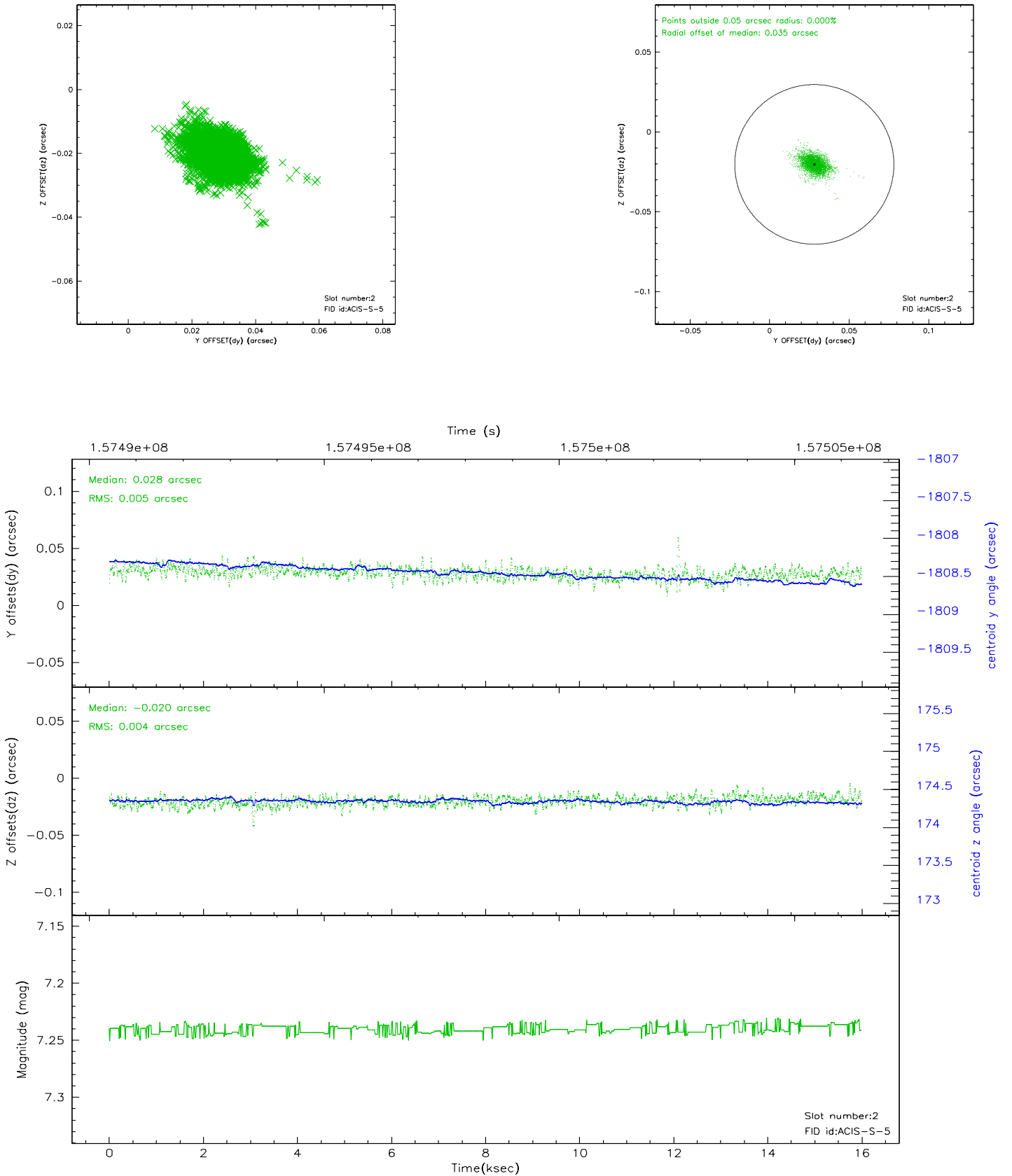
2.5.1 Slot 0



2.5.2 Slot 1



2.5.3 Slot 2



A Summary

A.1 Status

V&V Scientist	Joy Nichols
V&V Date (YYYY-MM-DD)	2006.12.15
V&V Edition	1
V&V Disposition and Status	OK
V&V Charge Time	15.989

A.2 Comments

Target 1E0953.8+6918 has coordinates ra=09 57 51.51, dec=+69 03 32.8 according to SIMBAD. The target coordinates specified by the observer for this observation were ra=09:57:53.00, dec=+69:03:51.00.

The guide star in slot 5 was removed from the aspect solution due to poor data quality. The aspect solution is not expected to be degraded by removing one guide star from the solution.