

# V&V Reference Report

## L2 ASCDS Version : 7.6.8

Observation 5241 - L2 Version 001  
Chandra X-Ray Center

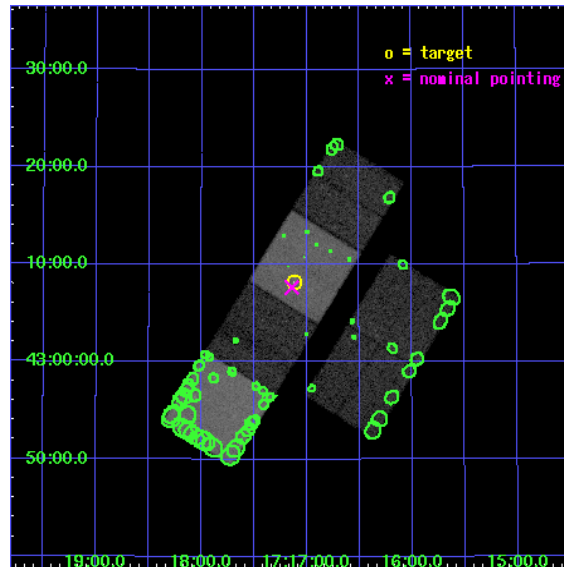
L2 Processing Date : Jun 29 2006

## Contents

<b>1</b>	<b>Front</b>	<b>2</b>
<b>2</b>	<b>OBI</b>	<b>3</b>
2.1	OBI . . . . .	3
2.1.1	Images . . . . .	3
2.1.2	Bias . . . . .	3
2.1.3	Parameters . . . . .	4
2.1.4	Events . . . . .	4
2.2	Compared Parameters . . . . .	5
2.3	Aspect . . . . .	6
2.4	Star Slots . . . . .	9
2.4.1	Slot 3 . . . . .	9
2.4.2	Slot 4 . . . . .	10
2.4.3	Slot 5 . . . . .	11
2.4.4	Slot 6 . . . . .	12
2.4.5	Slot 7 . . . . .	13
2.5	FID Slots . . . . .	14
2.5.1	Slot 0 . . . . .	14
2.5.2	Slot 1 . . . . .	15
2.5.3	Slot 2 . . . . .	16
<b>3</b>	<b>Point Sources</b>	<b>17</b>
<b>A</b>	<b>Summary</b>	<b>18</b>
A.1	Status . . . . .	18
A.2	Comments . . . . .	18

# 1 Front

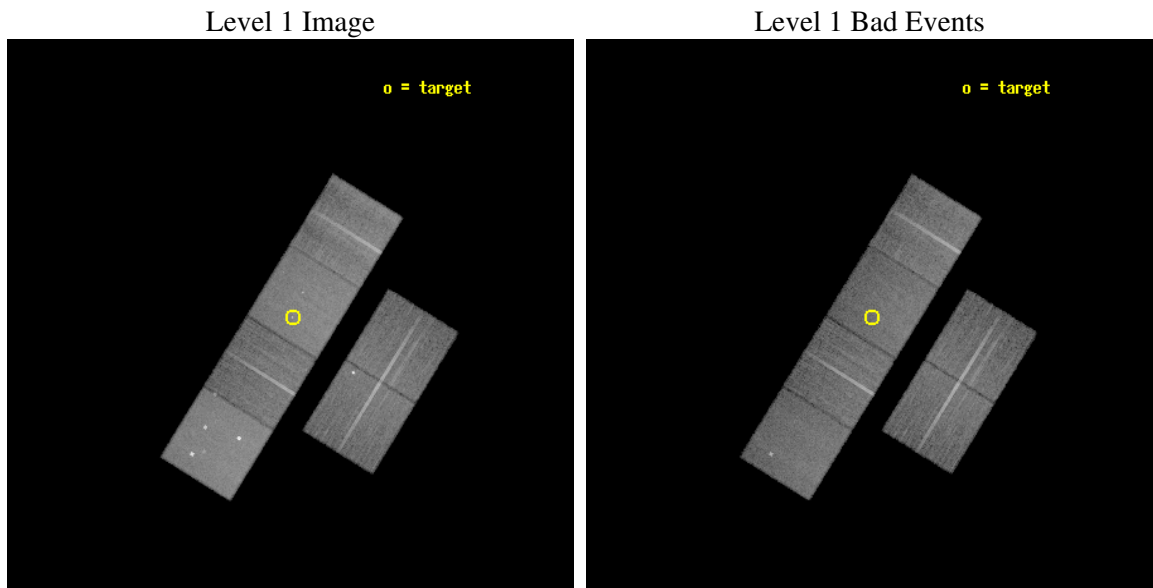
seq_num	300103
obs_id	5241
title	A UNIFORM STUDY OF GLOBULAR CLUSTER X-RAY SOURCES: THE KEY TO CLUSTER DYNAMICAL EVOLUTION
observer	Prof. Walter Lewin
object	NGC 6341
dtcycle	0
cycle	P
ra_targ	259.280417
dec_targ	43.136528
ra_nom	259.28528623063
dec_nom	43.12754699014
roll_nom	301.70416792394
revision	2
ontime	23219.199913502
livetime	22925.184423273
ontime2	23219.199913502
ontime3	23219.199913502
ontime5	23219.199913502
ontime6	23219.199913502
ontime7	23219.199913502
ontime8	23219.199913502
l2events	234717



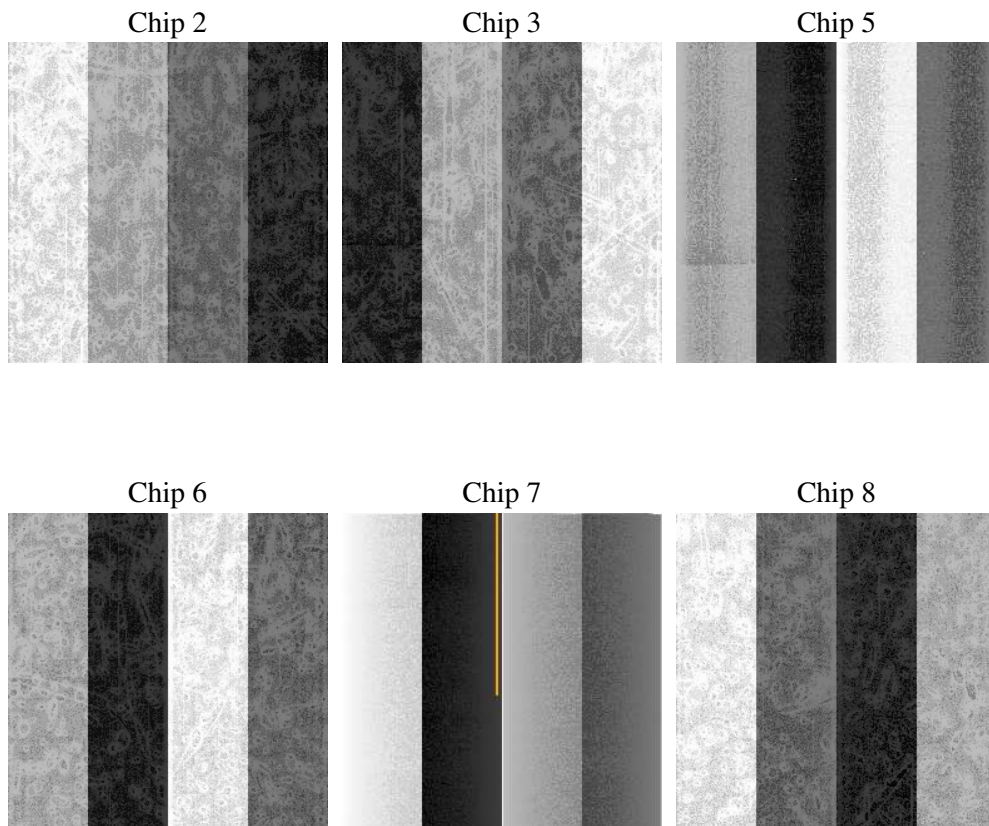
## 2 OBI

### 2.1 OBI

#### 2.1.1 Images



#### 2.1.2 Bias



### 2.1.3 Parameters

obi_num	0
ascdsver	7.6.8
caldsver	3.2.2
date	2006-06-29T10:36:47
revision	2

sched_exp_time	23107.000000
ontime	23225.011698902
ontime2	23225.011678994
ontime3	23225.011678994
ontime5	23225.011678994
ontime6	23225.011678994
ontime7	23225.011698902
ontime8	23225.011678994
l1events	1074319

### 2.1.4 Events

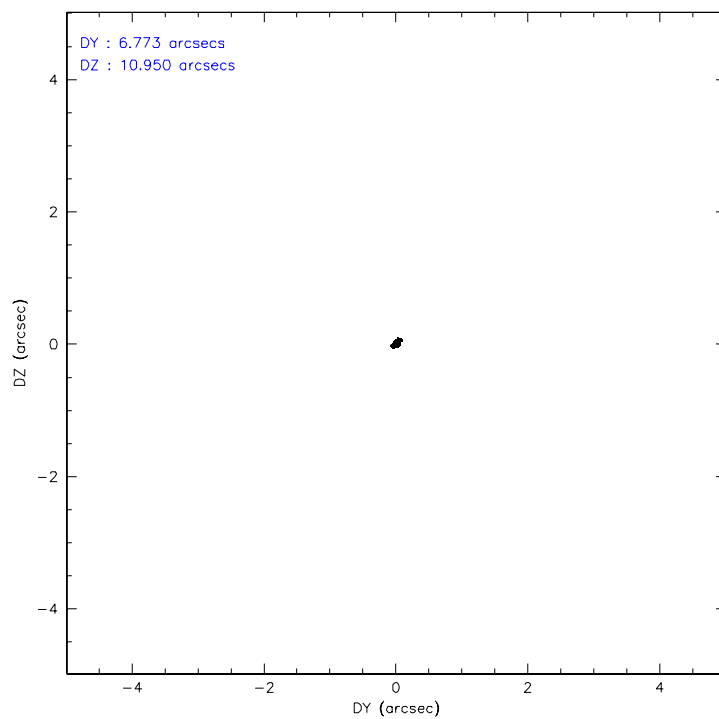
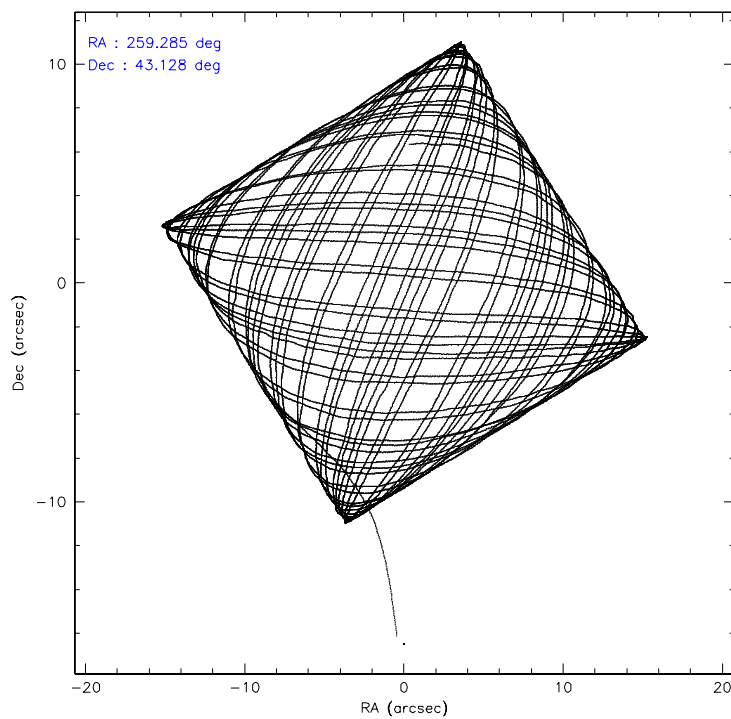
	ccd 2	ccd 3	ccd 5	ccd 6	ccd 7	ccd 8
level 1 events	156071	145428	231740	149787	203798	187495
rejected events	135089	128084	126744	132261	125858	147844
rejected %	86%	88%	54%	88%	61%	78%

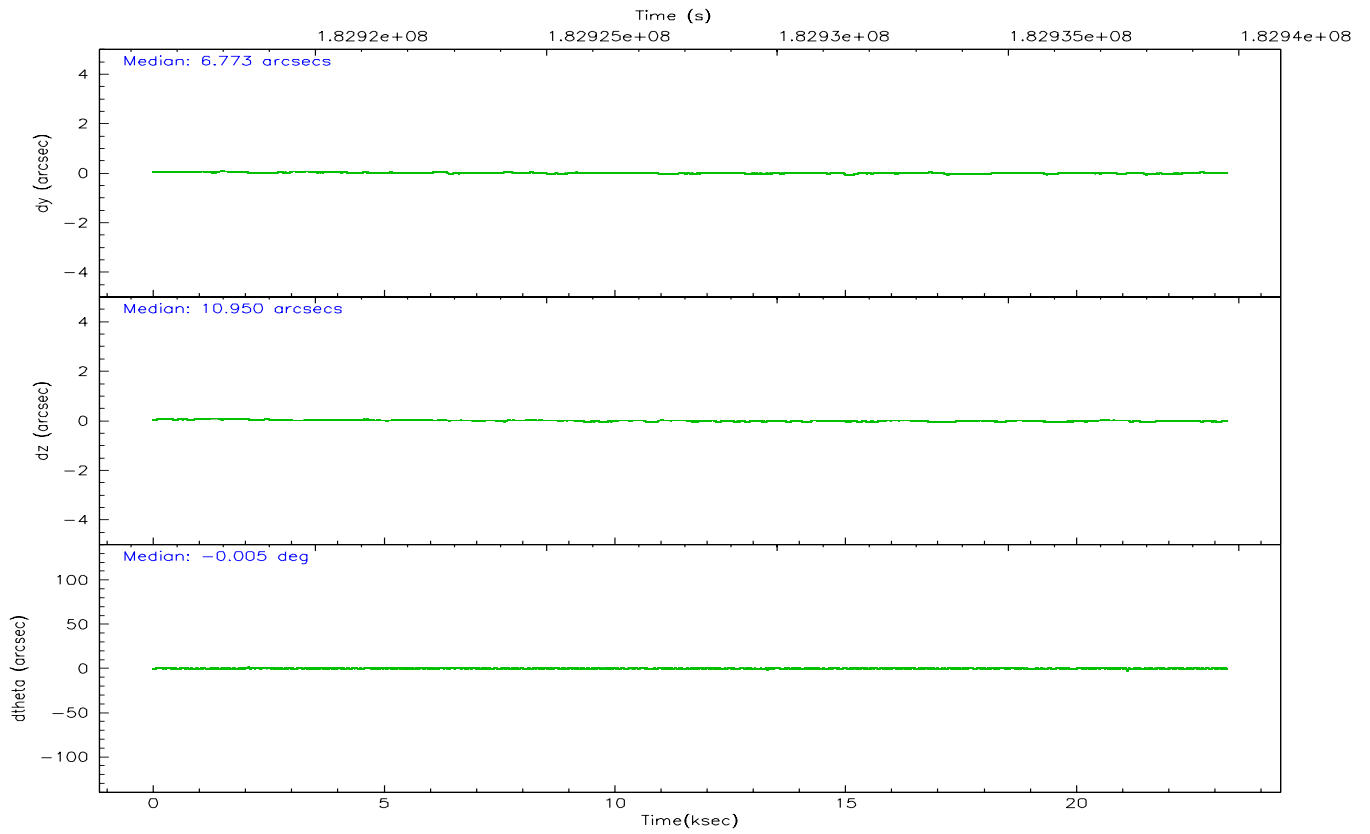
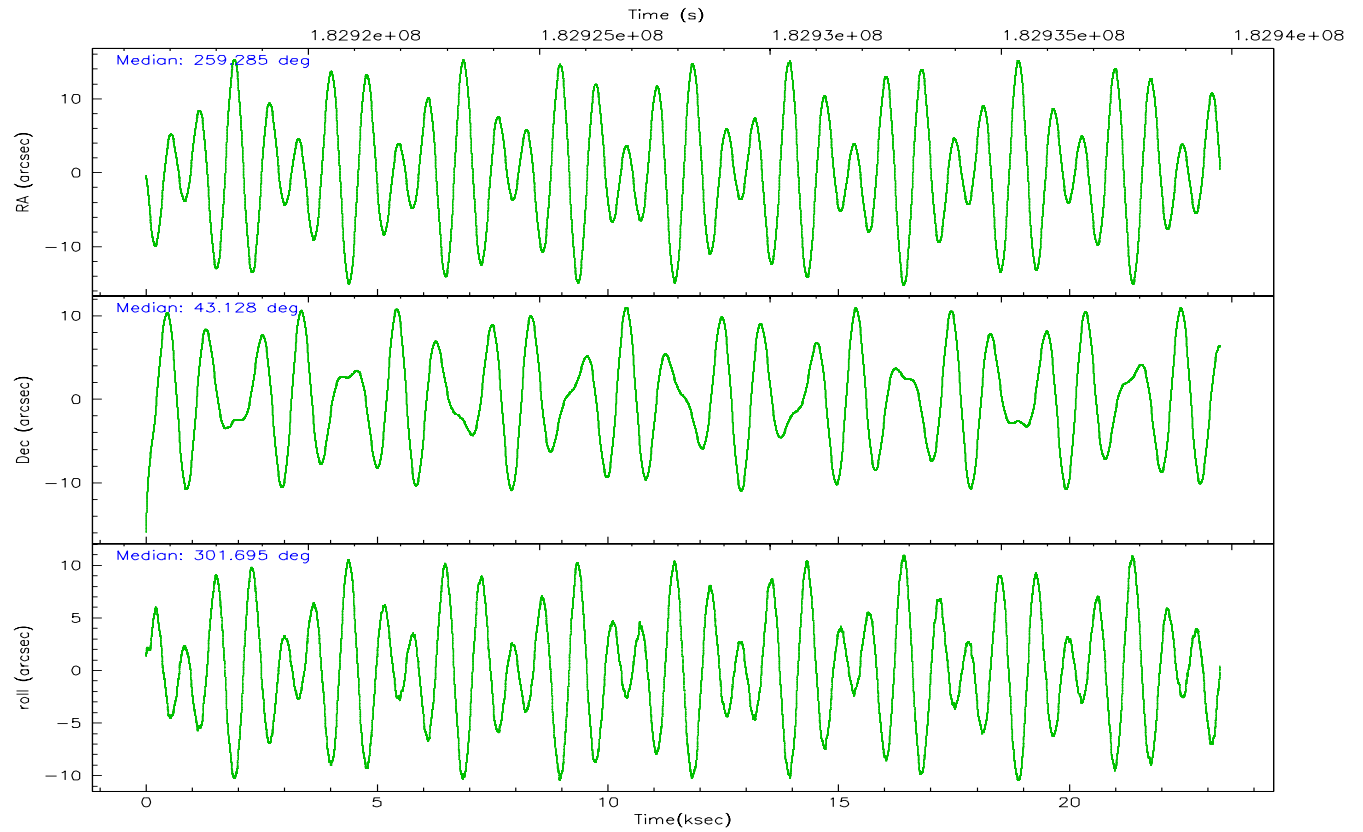
	ccd 2	ccd 3	ccd 5	ccd 6	ccd 7	ccd 8
grade 0 events	10574	7545	12778	6986	4748	12711
	6%	5%	5%	4%	2%	6%
grade 1 events	101	79	188	51	106	129
	0%	0%	0%	0%	0%	0%
grade 2 events	3841	3309	31616	3550	19185	8402
	2%	2%	13%	2%	9%	4%
grade 3 events	1812	1773	2296	1800	3942	4380
	1%	1%	0%	1%	1%	2%
grade 4 events	1743	1661	2100	1644	3824	4014
	1%	1%	0%	1%	1%	2%
grade 5 events	6032	6570	11263	6740	13128	8729
	3%	4%	4%	4%	6%	4%
grade 6 events	3014	3060	56234	3550	46260	10150
	1%	2%	24%	2%	22%	5%
grade 7 events	128954	121431	115265	125466	112605	138980
	82%	83%	49%	83%	55%	74%

## 2.2 Compared Parameters

Parameter	Planned	Actual	Parameter	Planned	Actual
Instrument	ACIS	ACIS	Obspar format version number	6	6
Detector	ACIS-235678	ACIS-235678	Obspar file type	PREDICTED	ACTUAL
Grating	NONE	NONE	Obspar update status	NONE	UPDATED
Data mode	FAINT	FAINT	On-chip summing requested	N	N
Observation mode	POINTING	POINTING	Subarray requested	NONE	NONE
Pointing RA	259.252199	259.2852862306295	Alternating exposures requested	N	N
Pointing Dec	43.140112	43.12754699014005	Primary exposure time	0.000000	3.2
Pointing Roll	301.570161	301.7041679239373			
SIM focus pos (mm)	-0.684267	-0.6828225247311905			
SIM defocus (mm)	0	0.001444936568705701			
SIM translation stage pos (mm)	-190.132523	-190.1425803651734			
SIM translation stage offset (mm)	0	0.01005778216563158			
Observation start time	182916642.184000	182915603.89627			
Observation start date	2003-10-19T02:09:38	2003-10-19T01:53:23			
Observation end time	182939749.184000	182940459.12234			
Observation end date	2003-10-19T08:34:45	2003-10-19T08:47:39			
Read mode	TIMED	TIMED			

## 2.3 Aspect



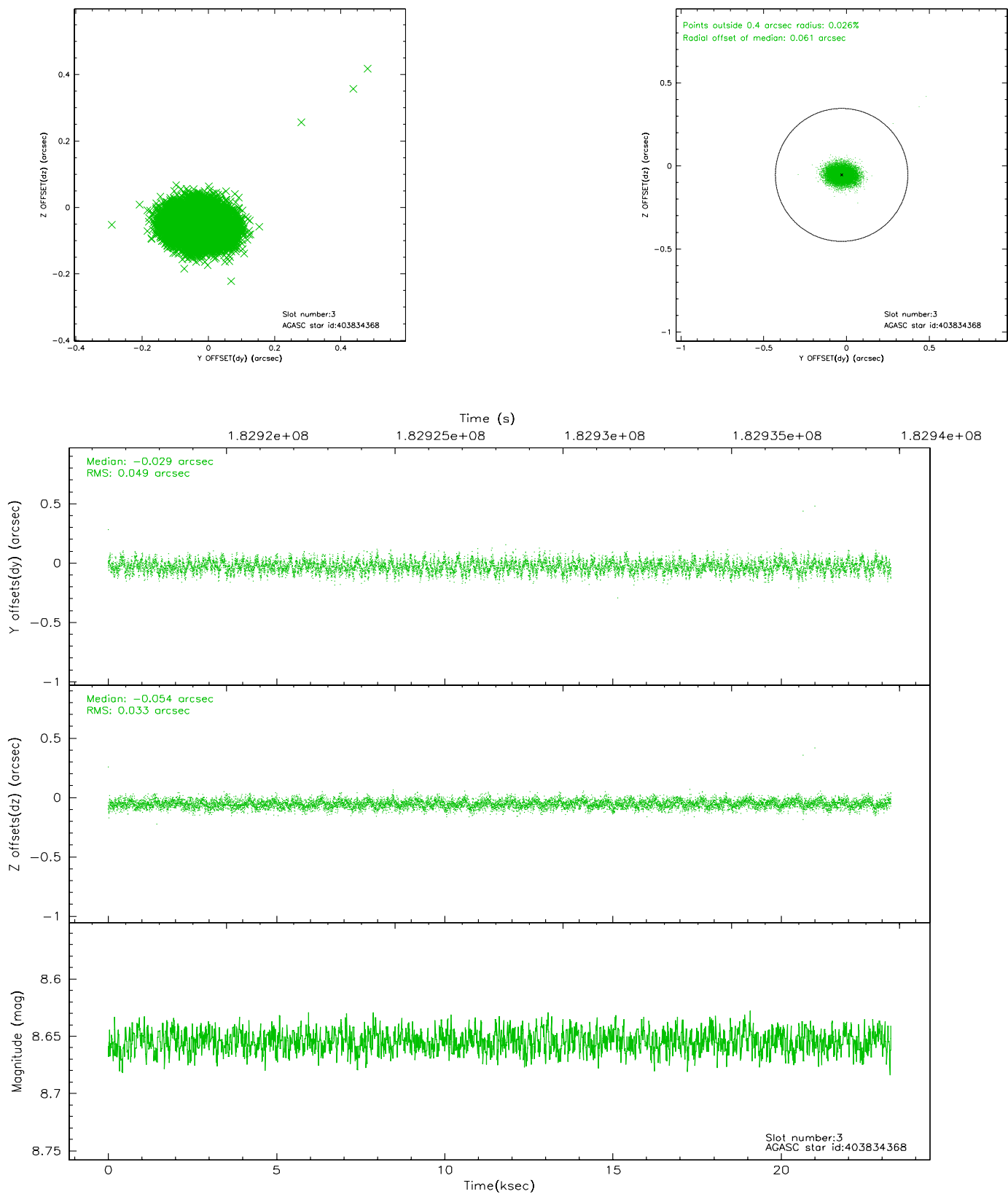


### Slot Statistics

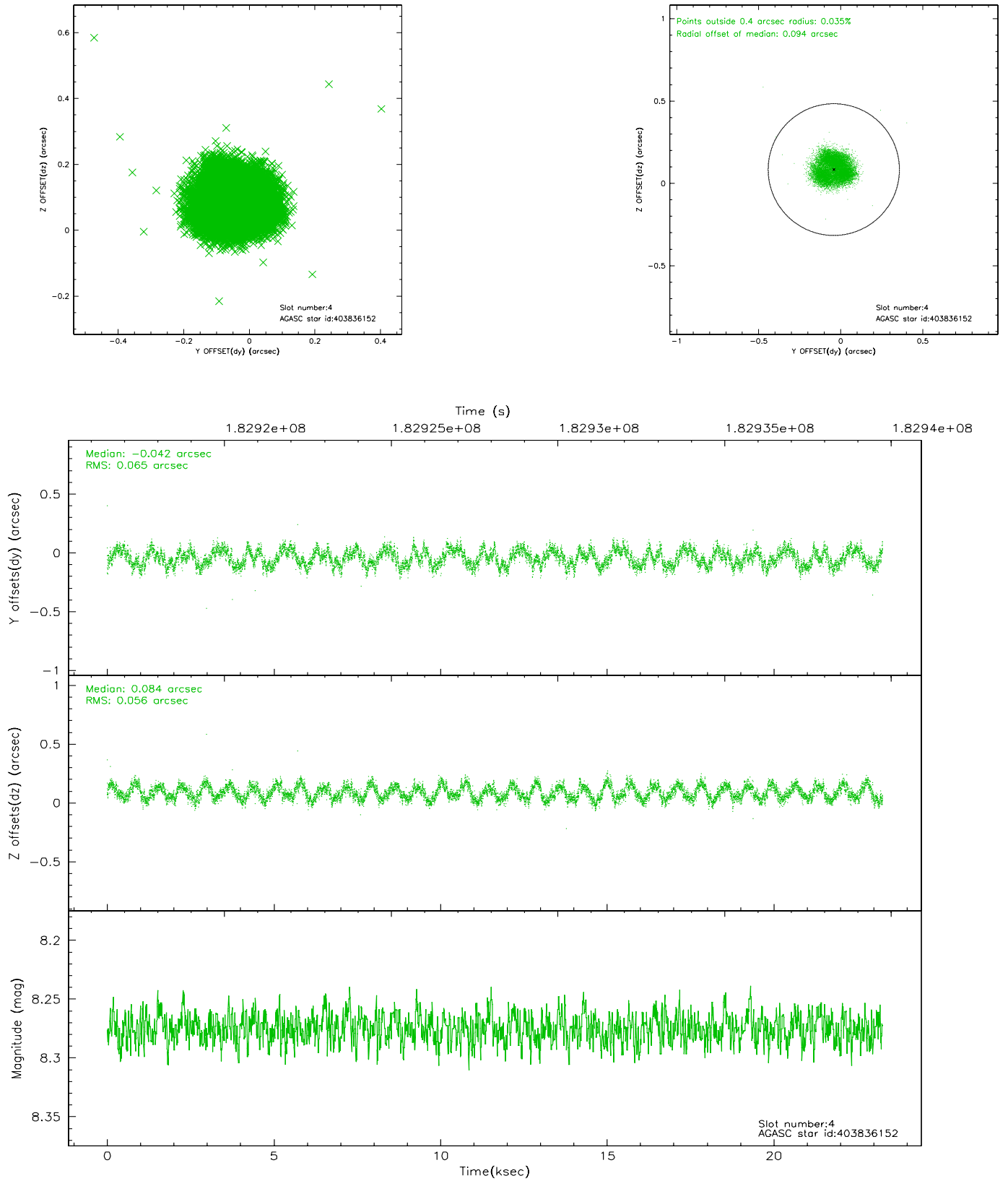
slot	status	id	mag	n_pts	med_dy	med_dz	dr1	dr2	ra	dec	mean_y	mean_z
0	FID	ACIS-S-1	7.18	5676	0.011	-0.045	0.007	0.011	0.000000	0.000000	936.51	-1727.86
1	FID	ACIS-S-5	7.23	5678	-0.008	0.012	0.006	0.010	0.000000	0.000000	-1812.41	169.64
2	FID	ACIS-S-6	7.34	5677	-0.024	0.045	0.007	0.011	0.000000	0.000000	401.91	813.77
3	GUIDE	403834368	8.65	11346	-0.029	-0.054	0.062	0.100	259.778485	42.643335	2249.97	253.79
4	GUIDE	403836152	8.27	11353	-0.042	0.084	0.094	0.134	259.353083	42.479308	2167.83	-1016.65
5	GUIDE	404362392	6.63	11355	-0.042	0.003	0.043	0.070	259.672399	43.609161	-867.37	1818.46
6	GUIDE	404365112	8.47	11352	0.001	0.108	0.060	0.097	259.601582	43.325231	-90.26	1129.70
7	GUIDE	403839112	8.83	11349	0.116	-0.147	0.099	0.162	259.018308	42.268024	2348.84	-2173.79

## 2.4 Star Slots

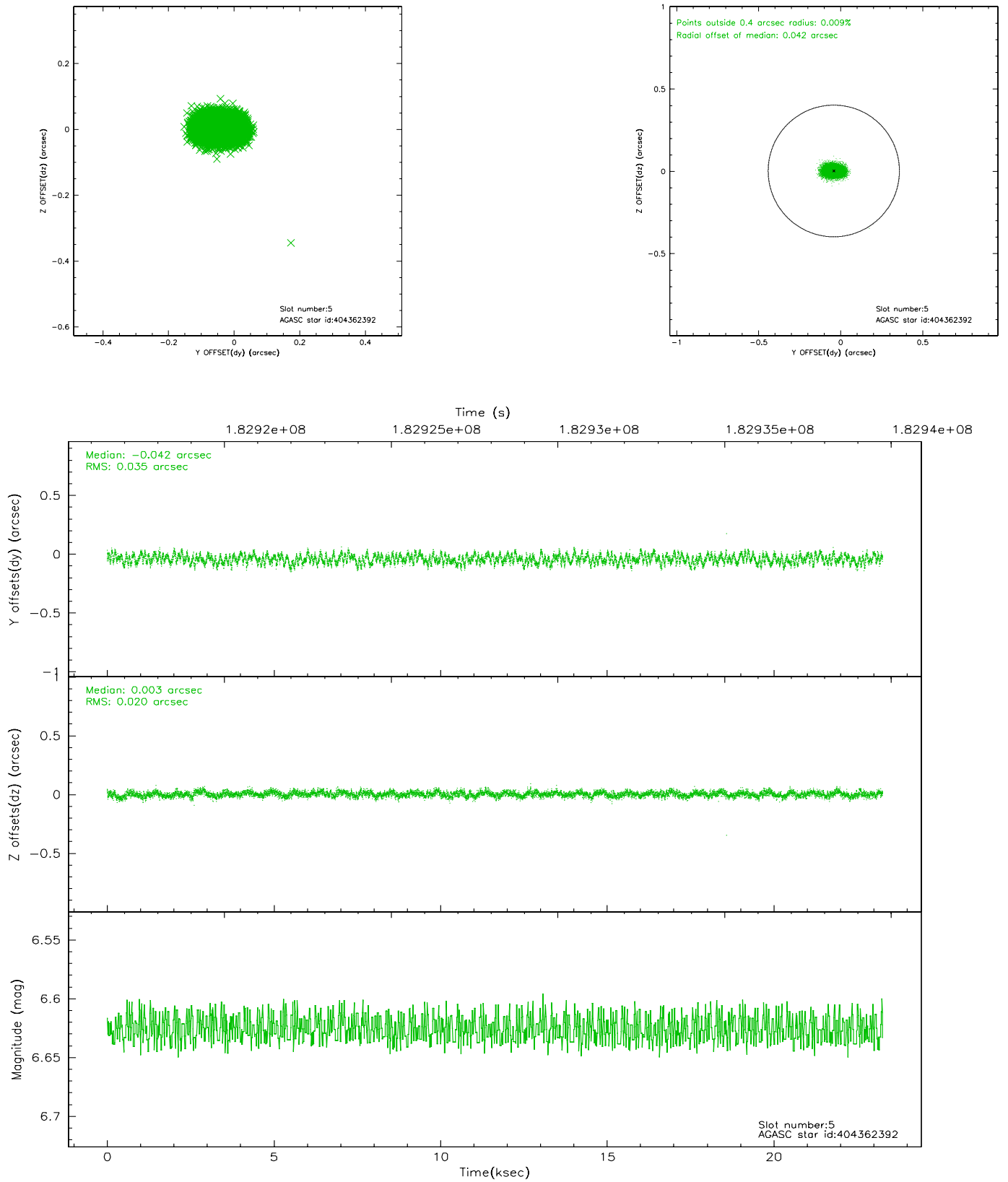
### 2.4.1 Slot 3



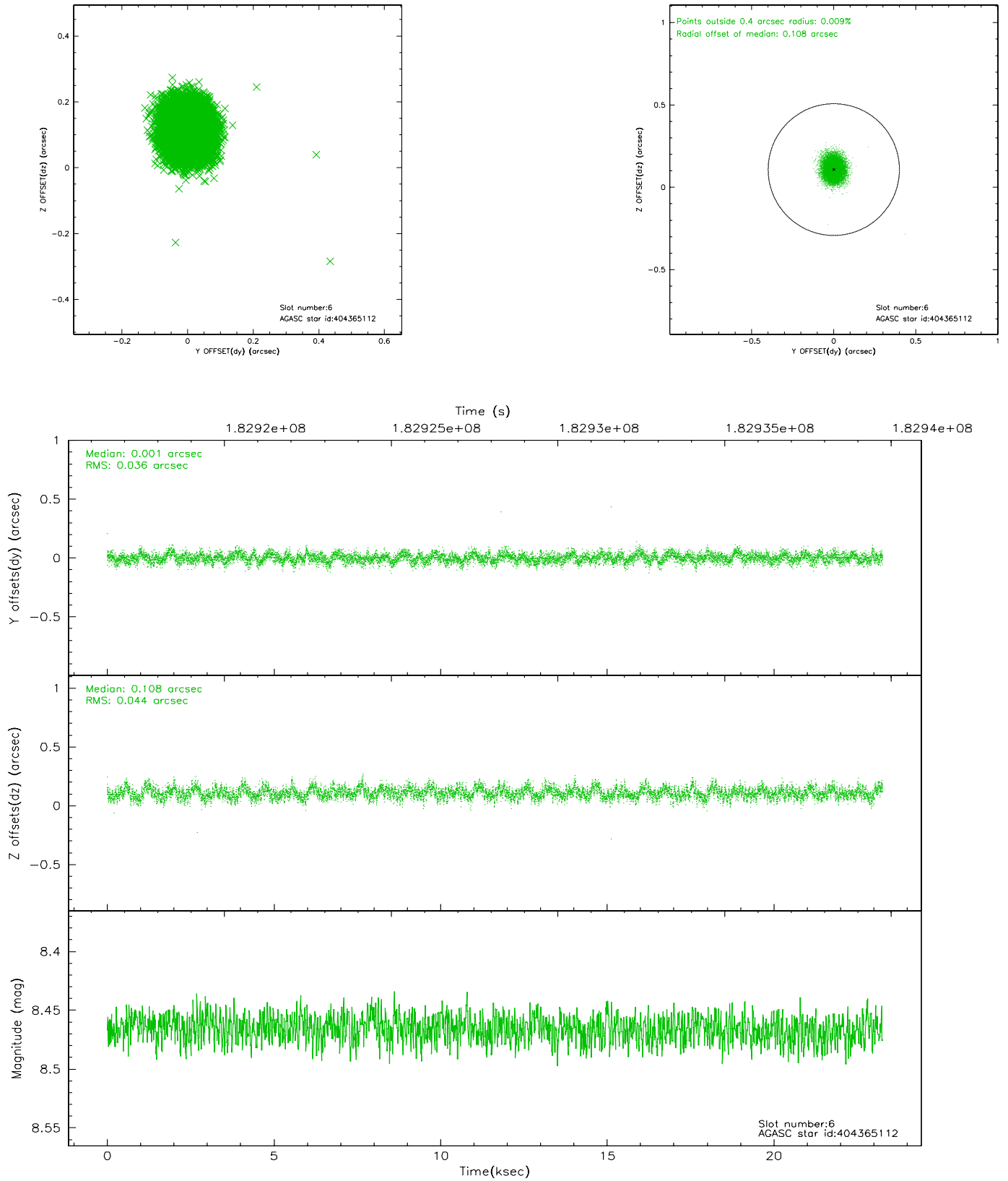
## 2.4.2 Slot 4



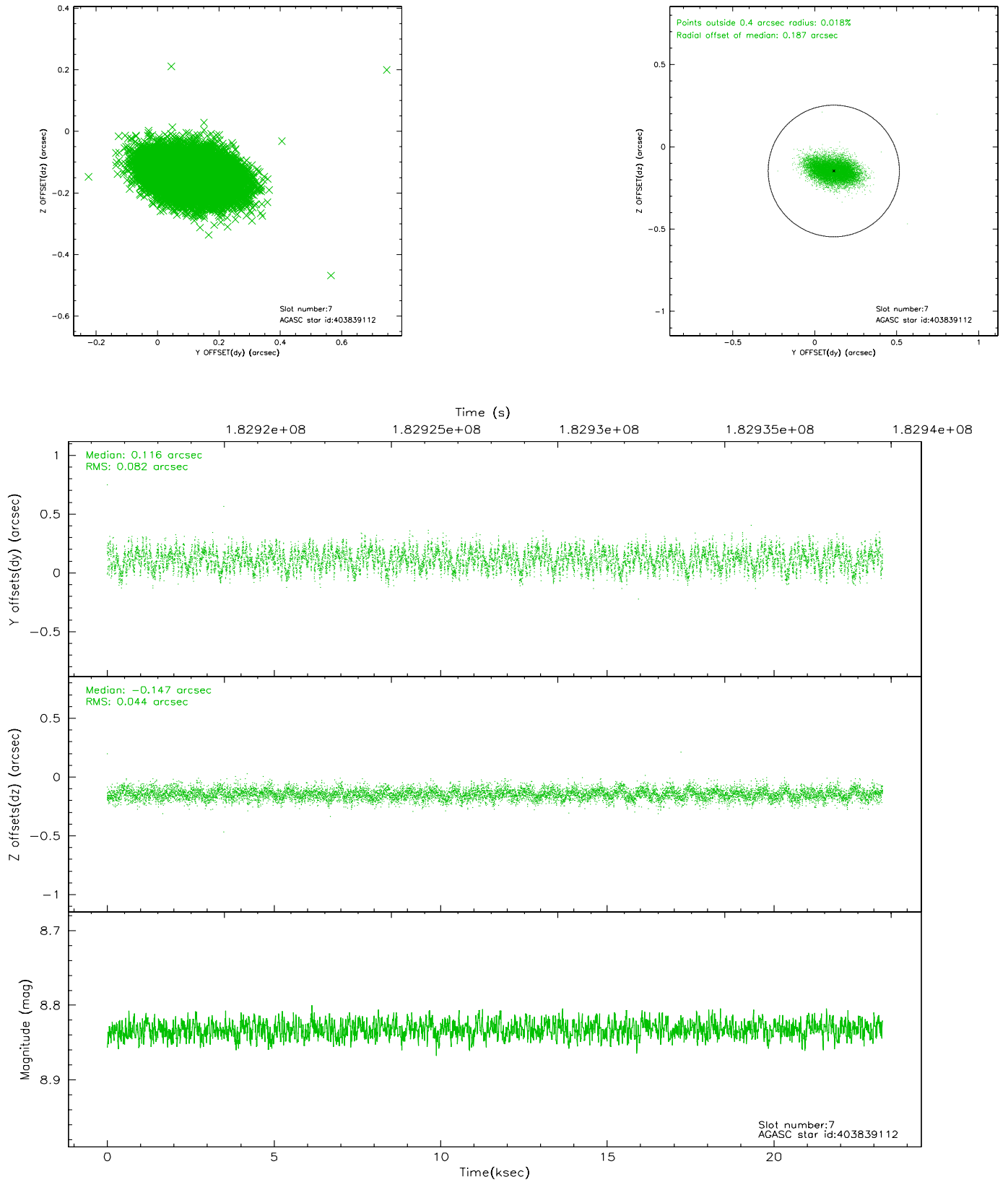
### 2.4.3 Slot 5



## 2.4.4 Slot 6

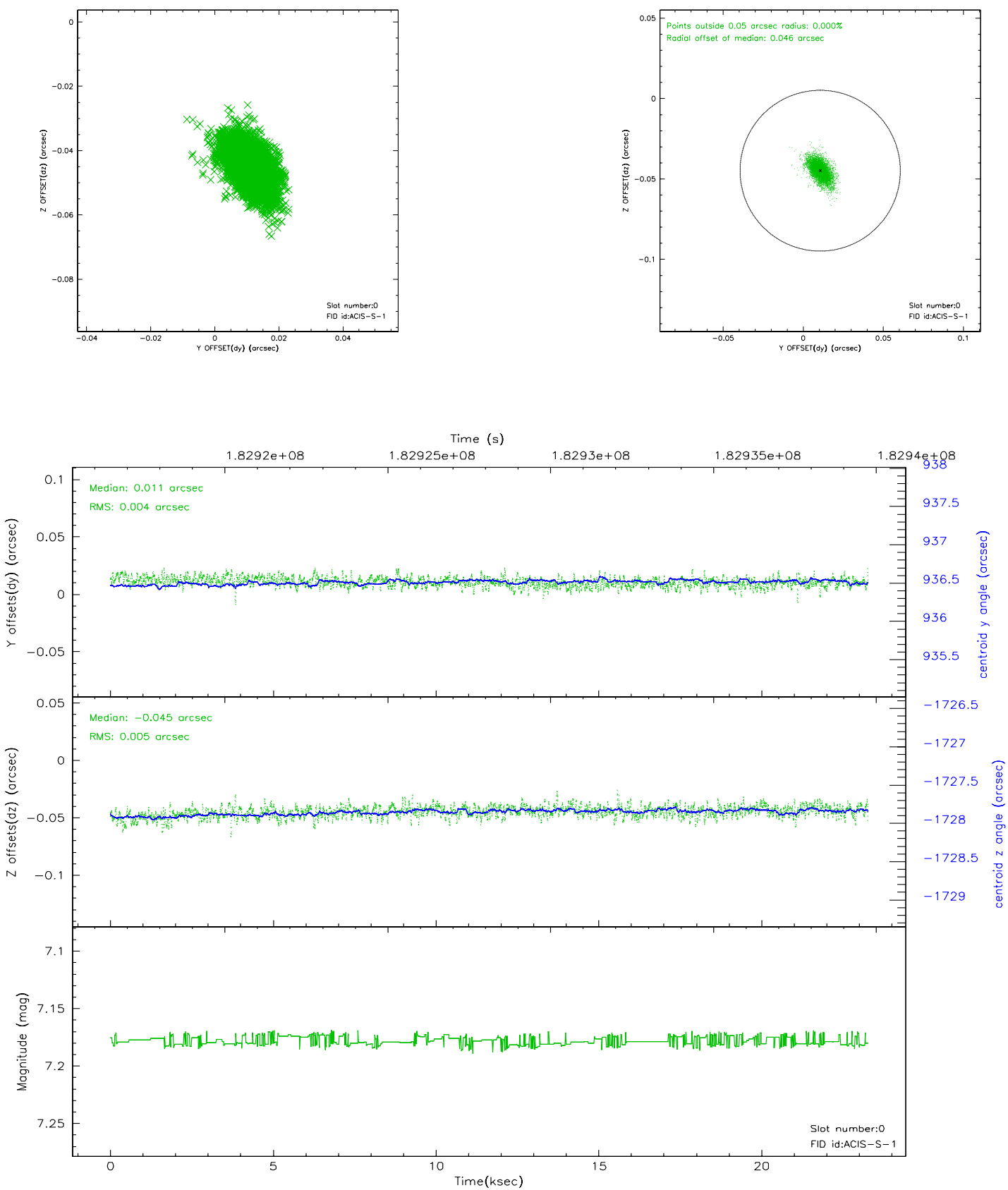


## 2.4.5 Slot 7

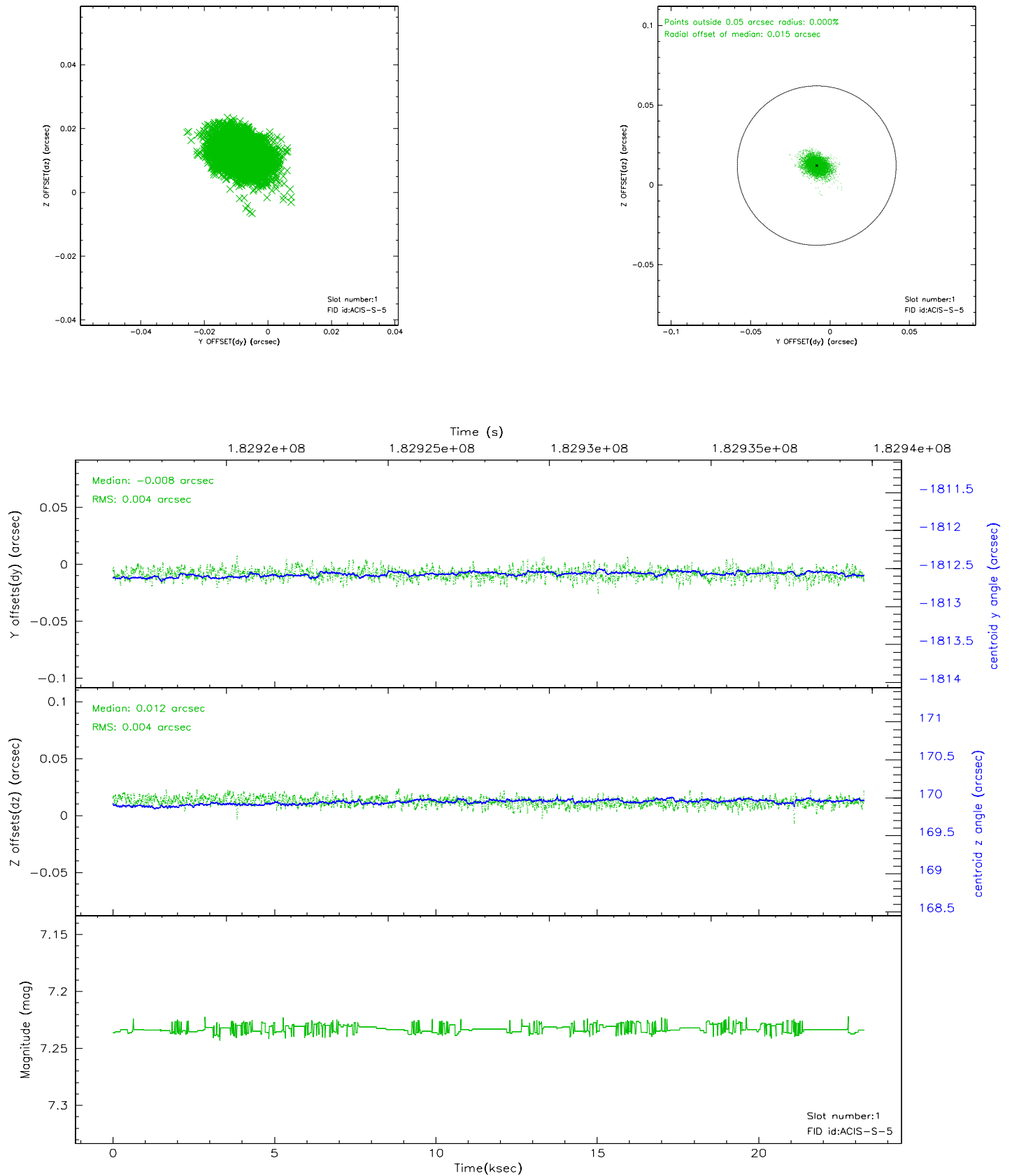


## 2.5 FID Slots

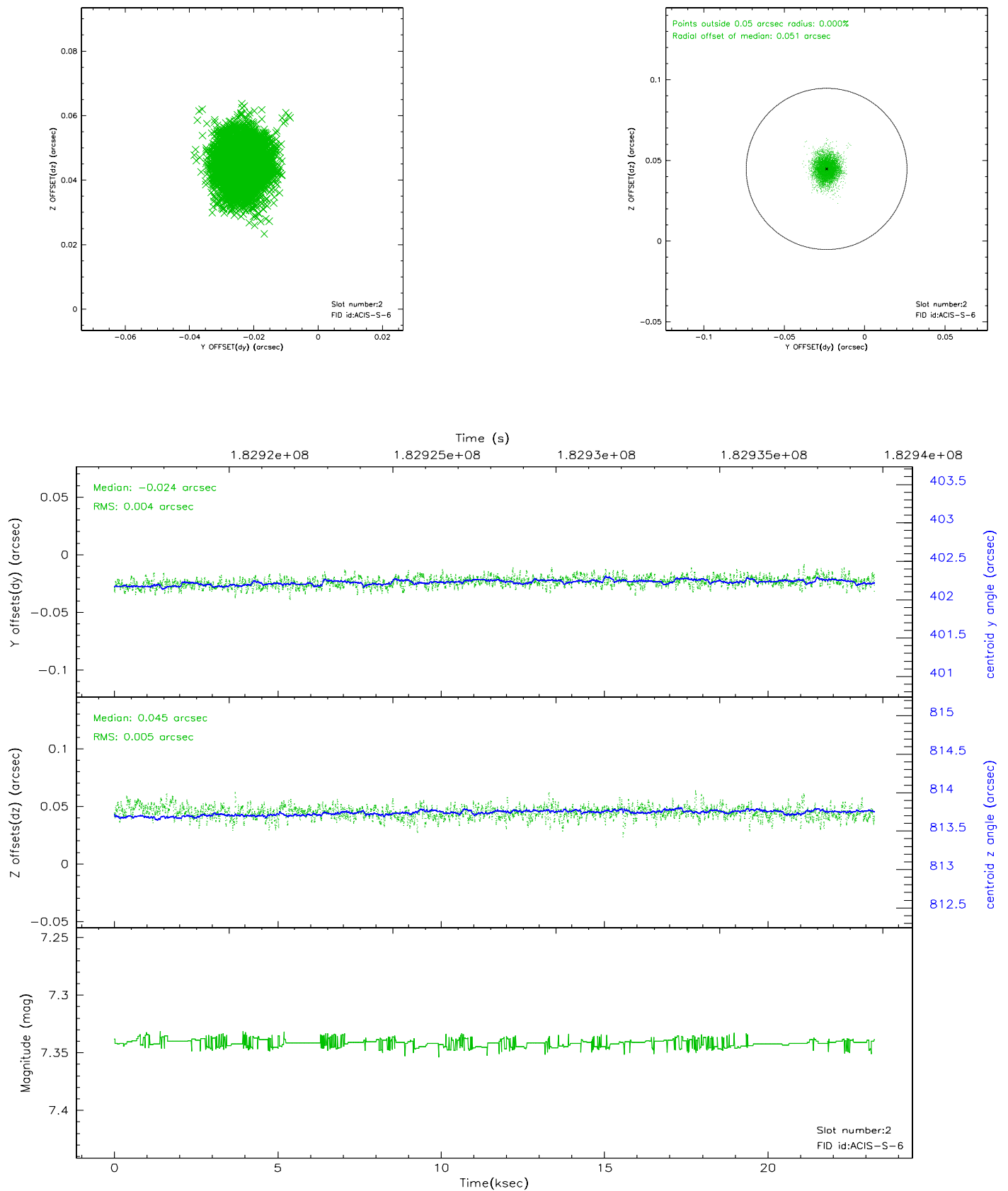
### 2.5.1 Slot 0



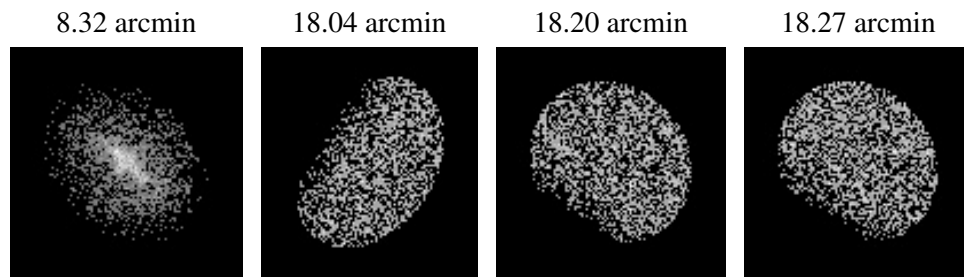
## 2.5.2 Slot 1



### 2.5.3 Slot 2



### 3 Point Sources



## A Summary

### A.1 Status

V&V Scientist	Beth Sundheim
V&V Date (YYYY-MM-DD)	2006.06.29
V&V Edition	1
V&V Disposition and Status	OK
V&V Charge Time	23.222

### A.2 Comments