

# V&V Reference Report

## L2 ASCDS Version : 8.4.5

Observation 4435 - L2 Version 3  
Chandra X-Ray Center

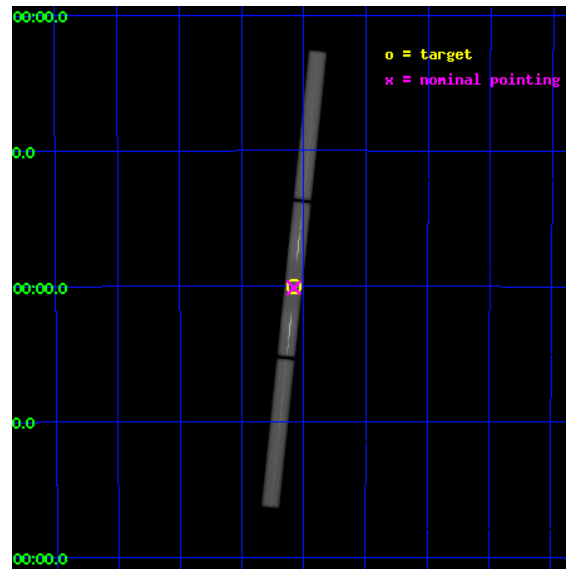
L2 Processing Date : Nov 4 2012

## Contents

<b>1</b>	<b>Front</b>	<b>2</b>
<b>2</b>	<b>OBI</b>	<b>3</b>
2.1	OBI . . . . .	3
2.1.1	Images . . . . .	3
2.1.2	Parameters . . . . .	4
2.1.3	Events . . . . .	4
2.2	Compared Parameters . . . . .	5
2.3	Aspect . . . . .	6
2.4	Star Slots . . . . .	9
2.4.1	Slot 3 . . . . .	9
2.4.2	Slot 4 . . . . .	10
2.4.3	Slot 5 . . . . .	11
2.4.4	Slot 6 . . . . .	12
2.4.5	Slot 7 . . . . .	13
2.5	FID Slots . . . . .	14
2.5.1	Slot 0 . . . . .	14
2.5.2	Slot 1 . . . . .	15
2.5.3	Slot 2 . . . . .	16
<b>3</b>	<b>Gratings</b>	<b>17</b>
3.1	LETG Arm . . . . .	17
<b>A</b>	<b>Summary</b>	<b>19</b>
A.1	Status . . . . .	19
A.2	Comments . . . . .	19

# 1 Front

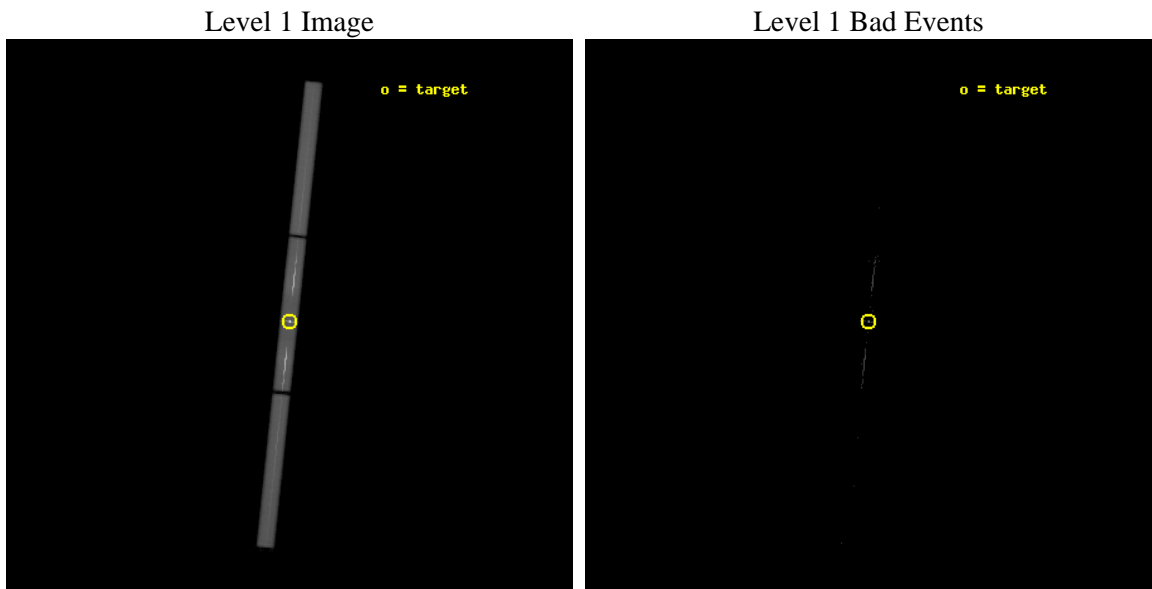
seq_num	300101	Sequence number
obs_id	4435	Observation id
title	MULTIWAVELNGTH TARGET OF OPPORTUNITY OBSERVATIONS OF A BRIGHT NOVA IN OUTBURST	Proposal title
observer	Regents' Professor Sumner Starrfield	Principal investigator
object	V4743 Sgr	Source name
ra_targ	285.289083	Observer's specified target RA [deg]
dec_targ	-22.001639	Observer's specified target Dec [deg]
ra_nom	285.28943887458	Nominal RA [deg]
dec_nom	-22.006295627292	Nominal Dec [deg]
roll_nom	275.95918771091	Nominal Roll [deg]
revision	3	Processing version of data
ontime	12343.306779683	[s]
liveltime	7911.0331925177	Ontime multiplied by DTCOR
l2events	2072544	Number of level 2 events



## 2 OBI

### 2.1 OBI

#### 2.1.1 Images



### 2.1.2 Parameters

obi_num	0	Obi number	sched_exp_time	12110.305000	[s] Scheduled observation exposure time
ascdsver	8.4.5	Processing system revision	ontime	12343.306779683	[s]
caldsver	4.5.2	&#160	l1events	2281247	Number of level 1 events
date	2012-11-04T11:24:47	Date and time of file creation			
revision	3	Processing version of data			

### 2.1.3 Events

Level 1 Events

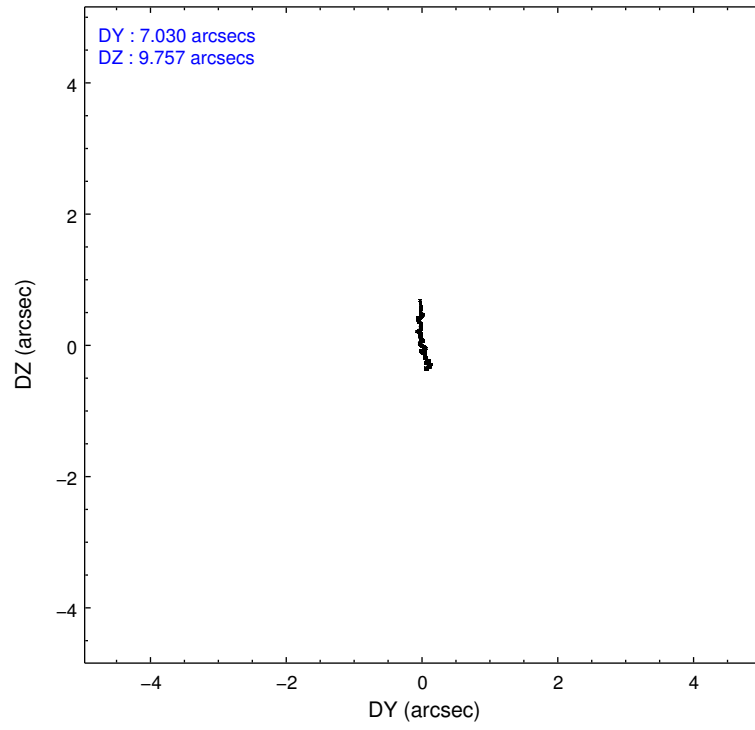
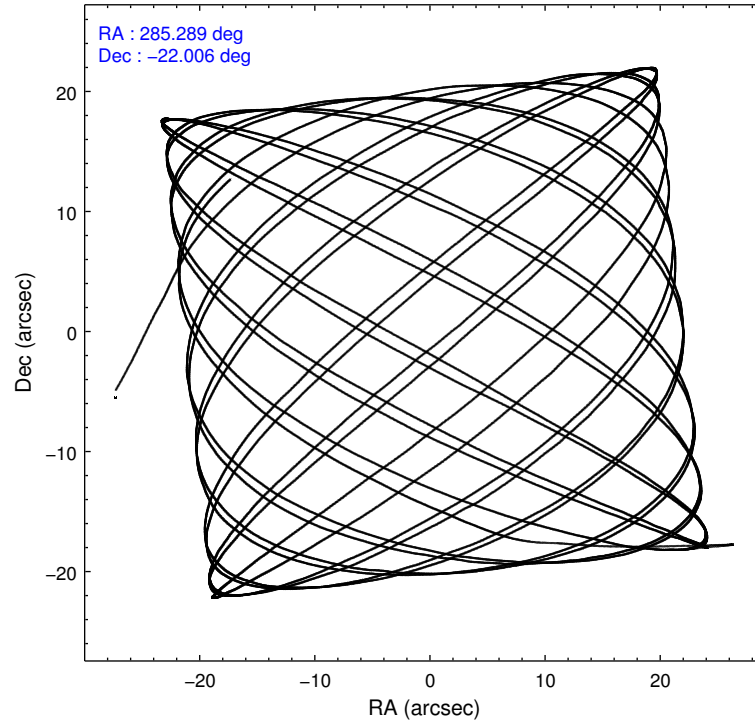
	<b>segment 1</b>	<b>segment 2</b>	<b>segment 3</b>
level 1 events	630546	1112541	538160
rejected events	1902	4113	1862
rejected %	0%	0%	0%

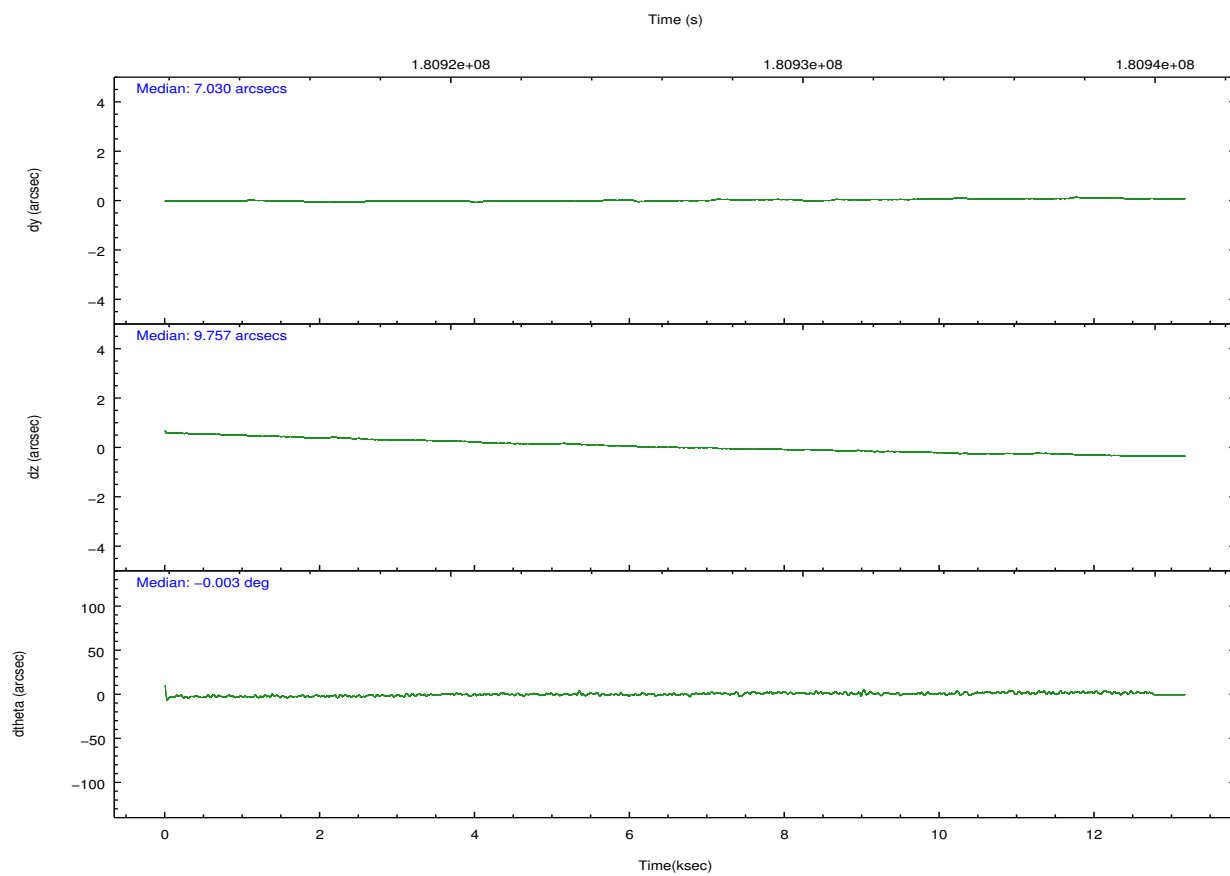
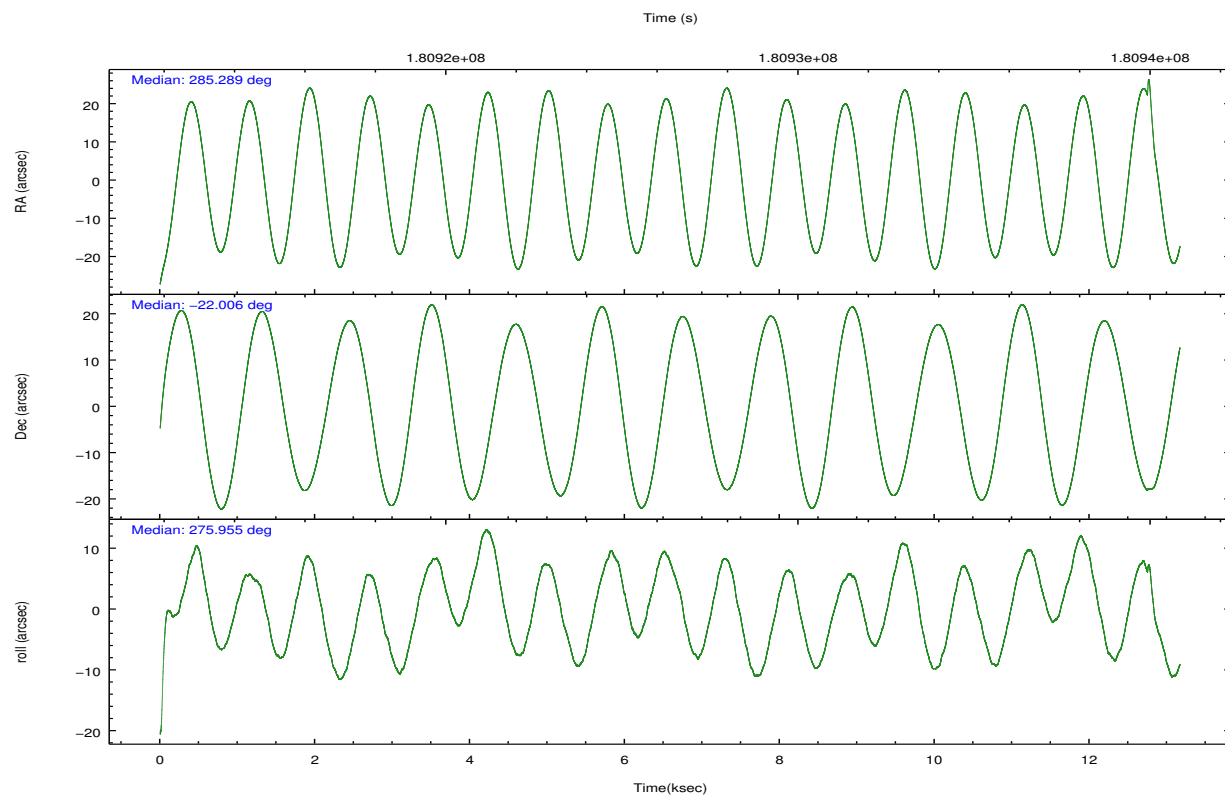


## 2.2 Compared Parameters

Parameter	Planned	Actual	Parameter	Planned	Actual
Instrument	HRC	HRC	Obspar format version number	7	7
Detector	HRC-S	HRC-S	Obspar file type	PREDICTED	ACTUAL
Grating	LETG	LETG	Obspar update status	NONE	UPDATED
Data mode	OBSERVING	OBSERVING			
Observation mode	POINTING	POINTING			
[deg] Pointing RA	285.270139	285.2894388745772			
[deg] Pointing Dec	-21.984017	-22.00629562729212			
[deg] Pointing Roll	275.884638	275.9591877109136			
[mm] SIM focus pos	-1.429586	-1.428180813131781			
[mm] SIM defocus	0.1037507710433287	0.1051558262725154			
[mm] SIM translation stage pos	250.455976	250.4635187648994			
[mm] SIM translation stage offset	0	-0.007540371344731511			
[s] Observation start time (MET)	180921764.184000	180921110.12307			
Observation start date	2003-09-26T00:01:40	2003-09-25T23:51:50			
[s] Observation end time (MET)	180933874.184000	180935487.79868			
Observation end date	2003-09-26T03:23:30	2003-09-26T03:51:27			

## 2.3 Aspect



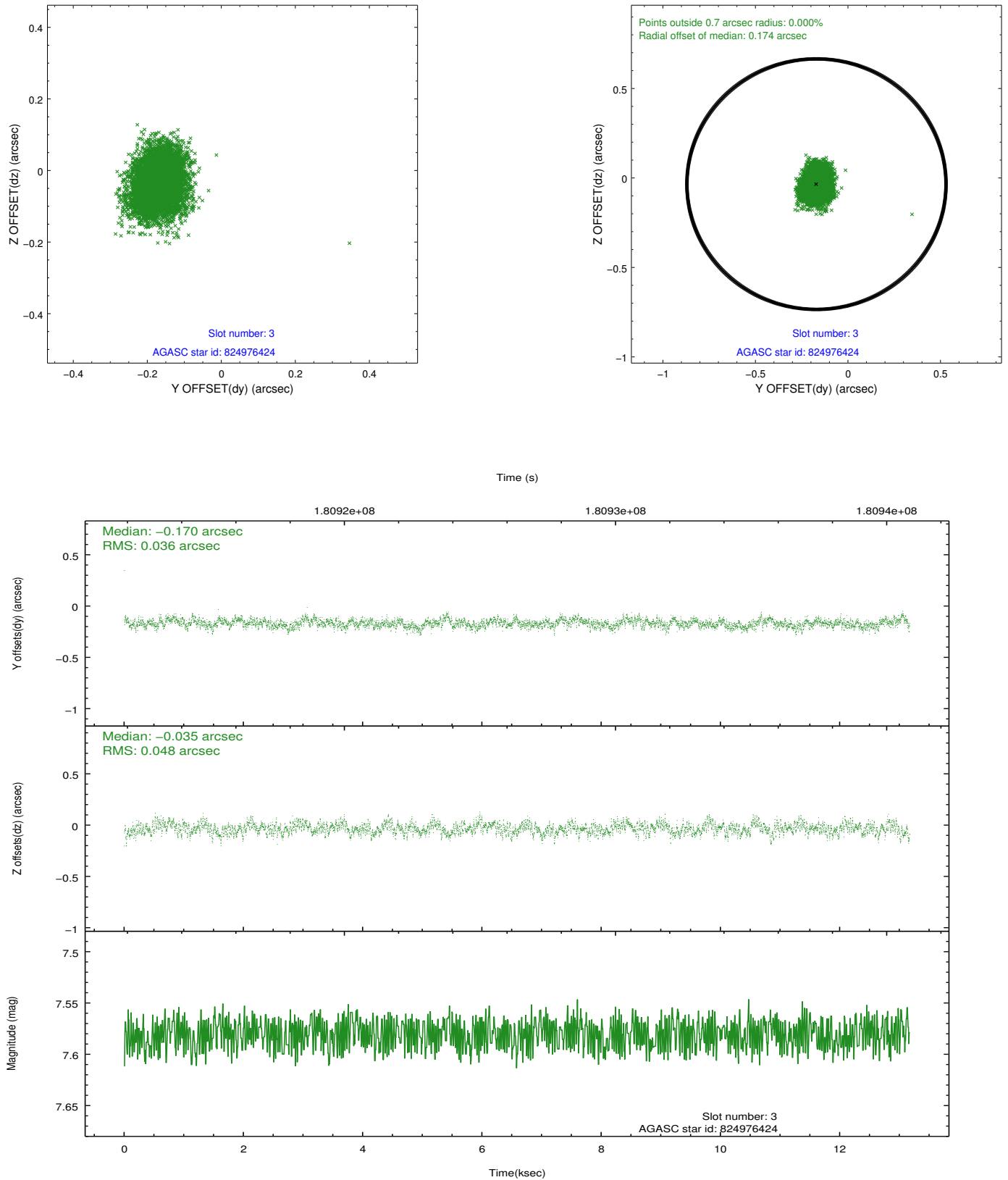


### Slot Statistics

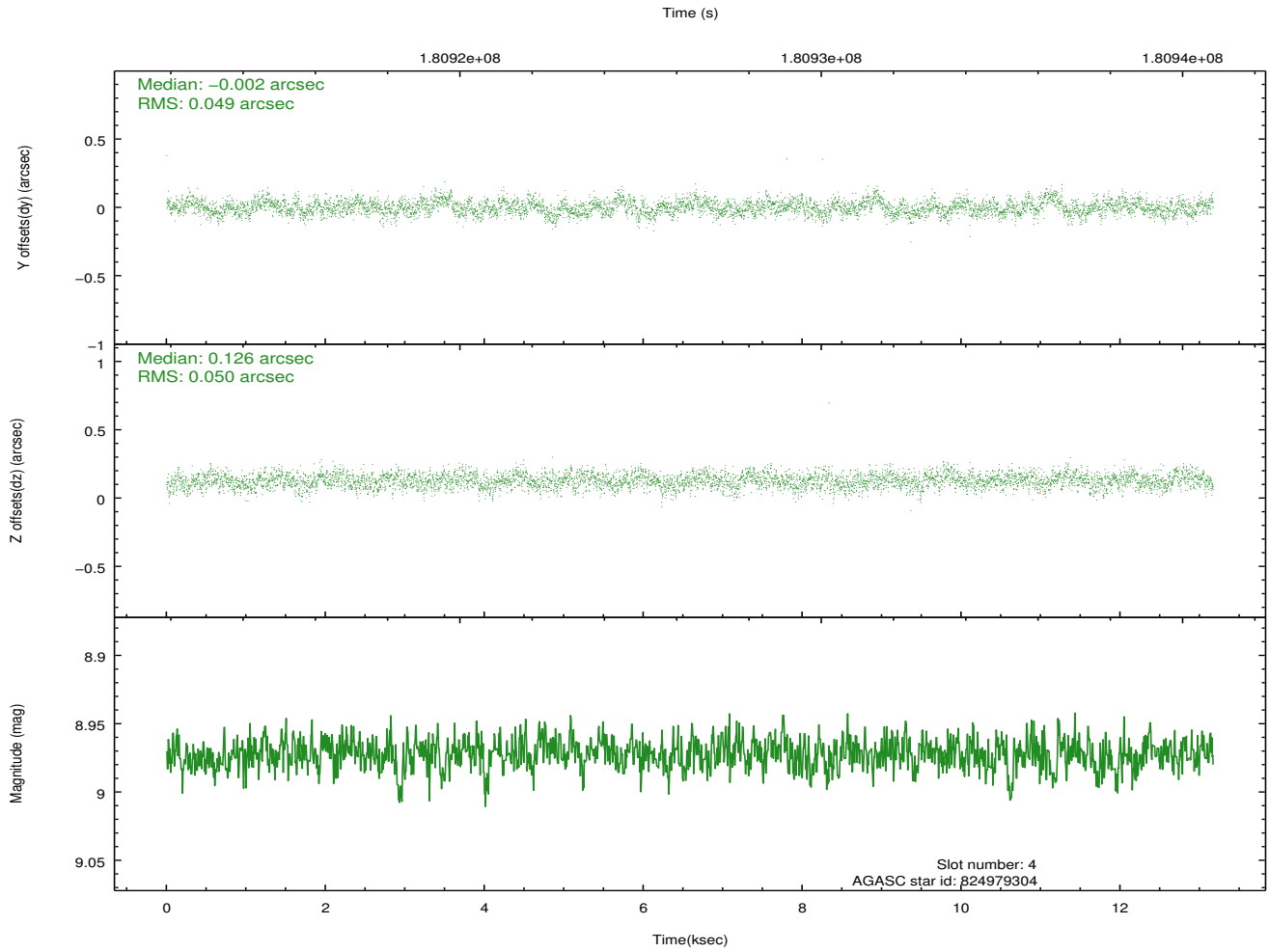
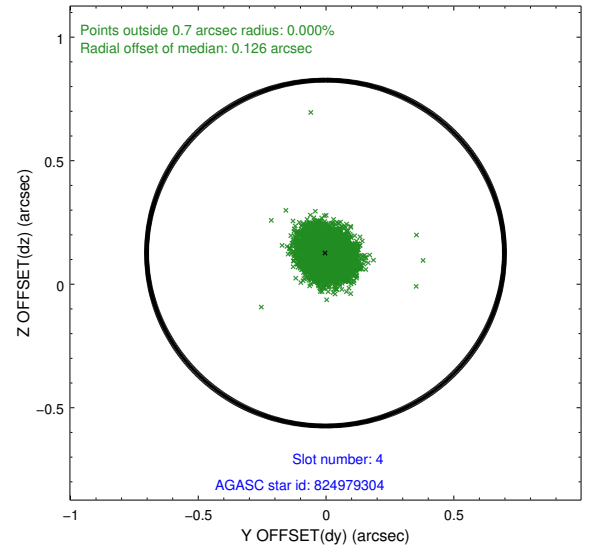
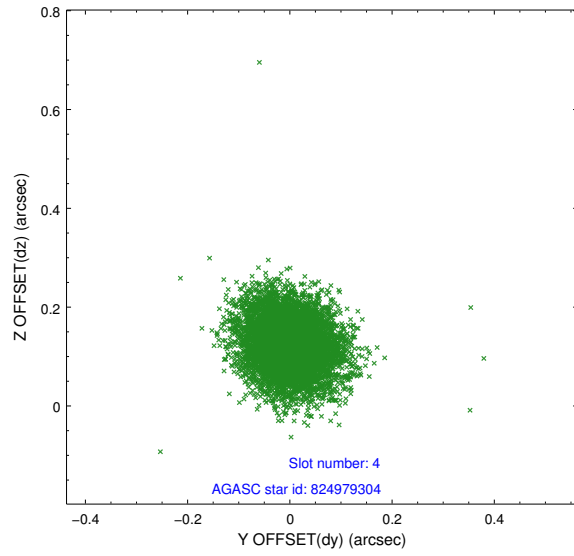
slot	status	id	mag	n_pts	med_dy	med_dz	dr1	dr2	ra	dec	mean_y	mean_z
0	FID	HRC-S-1	7.03	3115	0.112	-0.196	0.010	0.015	0.000000	0.000000	-1161.21	-458.48
1	FID	HRC-S-3	7.05	3113	0.094	-0.009	0.011	0.017	0.000000	0.000000	-1164.32	571.09
2	FID	HRC-S-4	7.01	3113	0.183	-0.092	0.006	0.011	0.000000	0.000000	1236.75	573.90
3	GUIDE	824976424	7.58	6423	-0.170	-0.035	0.063	0.105	284.900091	-21.828249	-682.68	-1172.58
4	GUIDE	824979304	8.97	6419	-0.002	0.126	0.074	0.120	285.497931	-22.093264	470.03	715.76
5	GUIDE	899154168	9.44	6421	0.406	-0.215	0.123	0.202	284.628850	-22.662641	2217.51	-2369.85
6	GUIDE	824977840	9.18	6418	0.032	0.068	0.083	0.137	285.448876	-22.329632	1299.90	464.60
7	GUIDE	824970200	9.56	6416	-0.266	0.053	0.101	0.166	284.845750	-21.379569	-2307.47	-1192.45

## 2.4 Star Slots

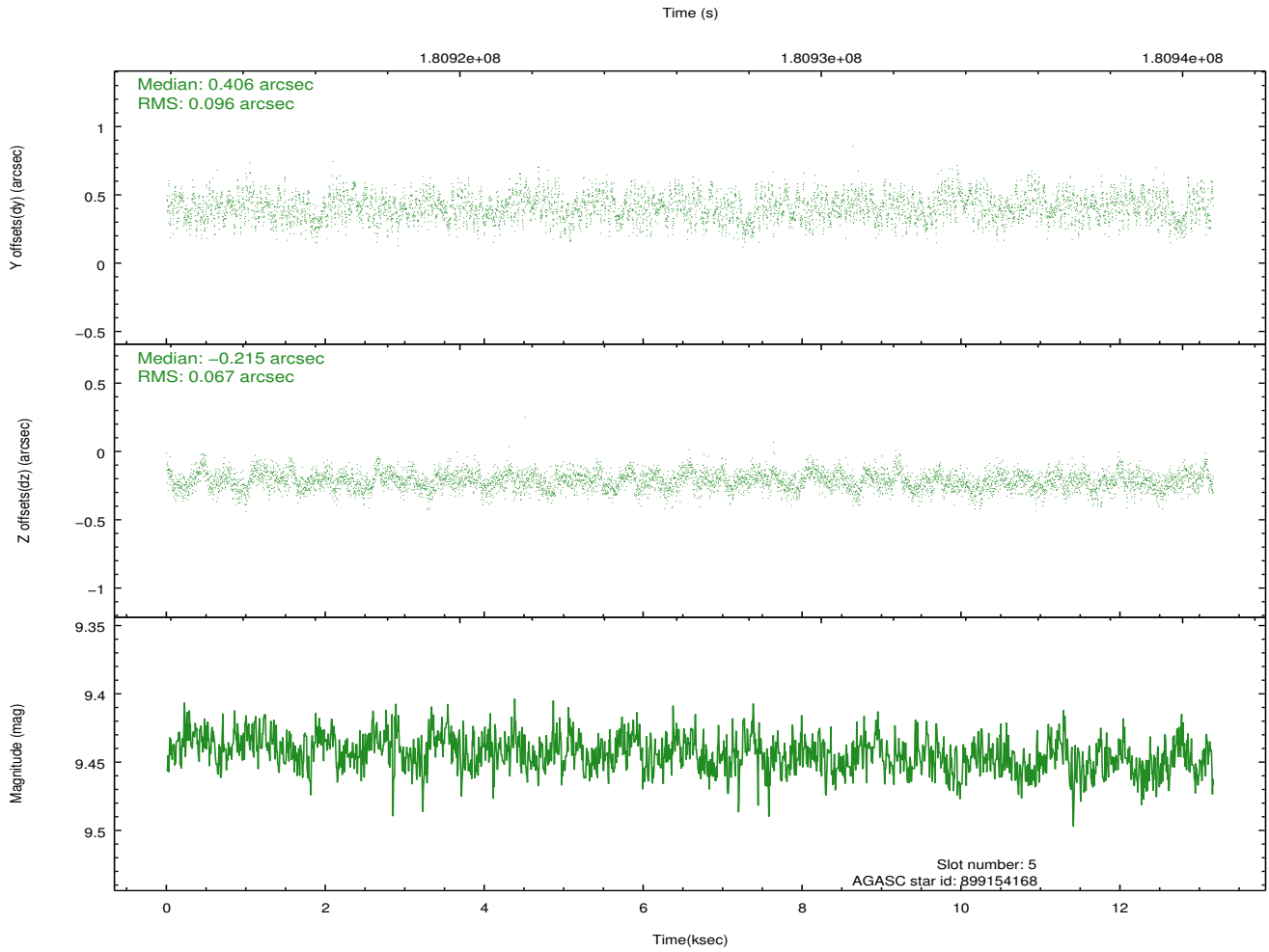
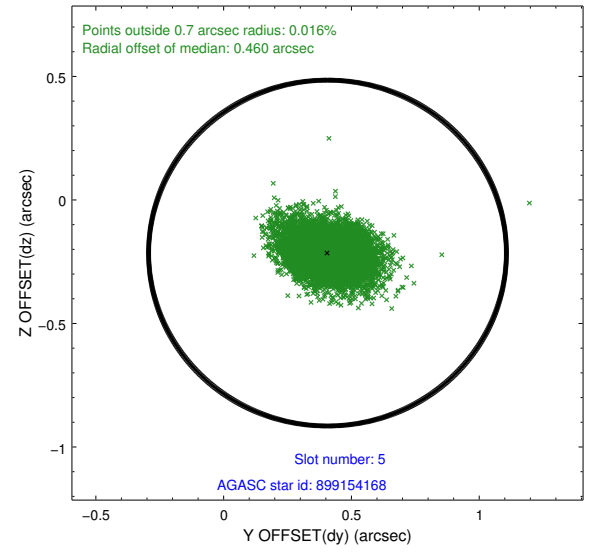
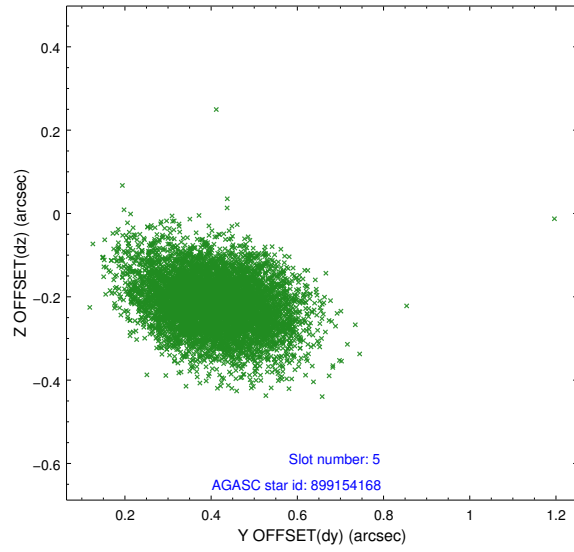
### 2.4.1 Slot 3



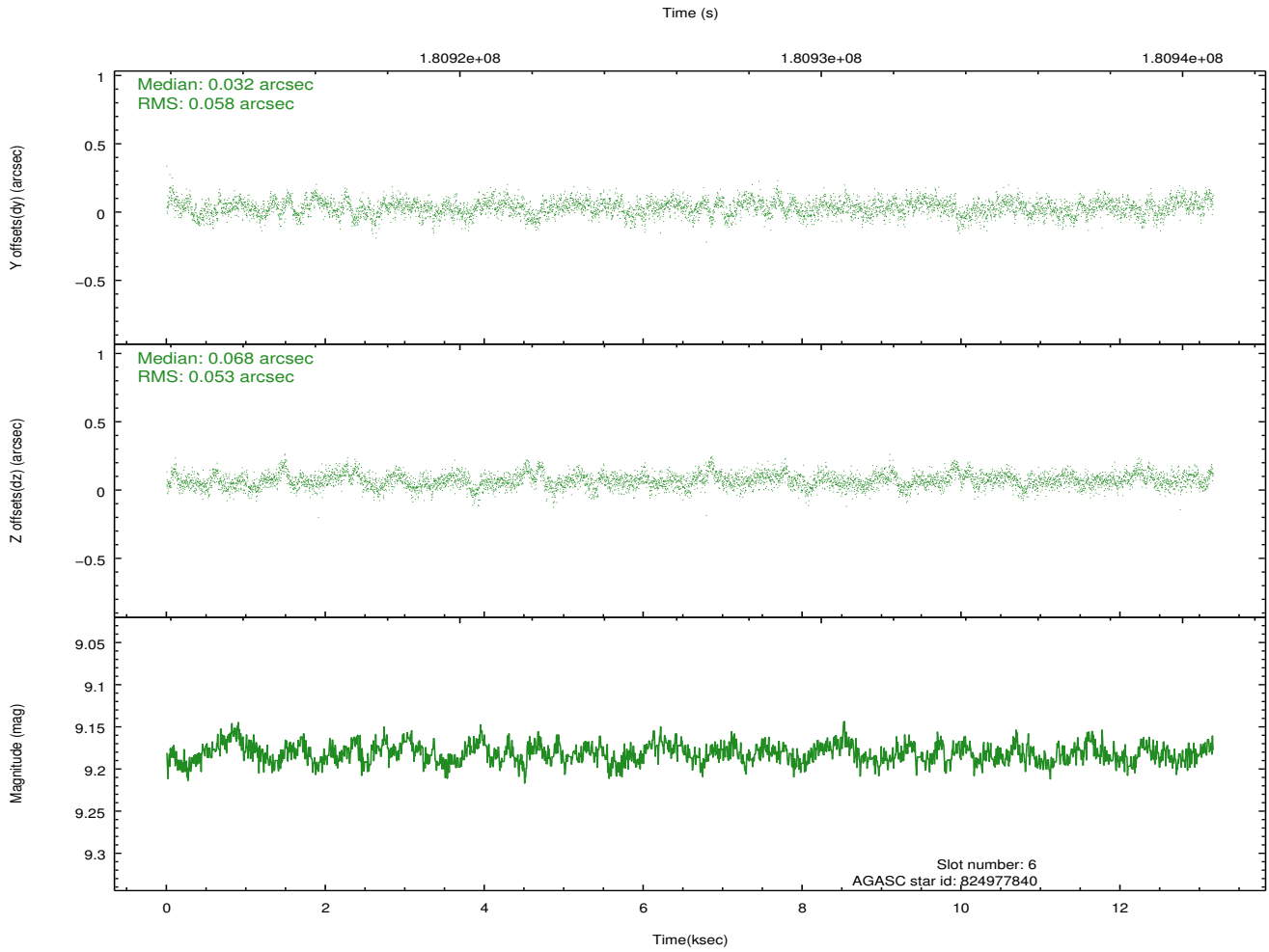
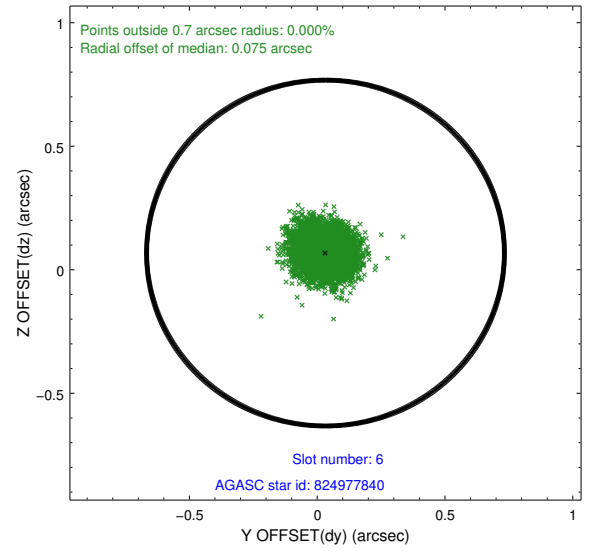
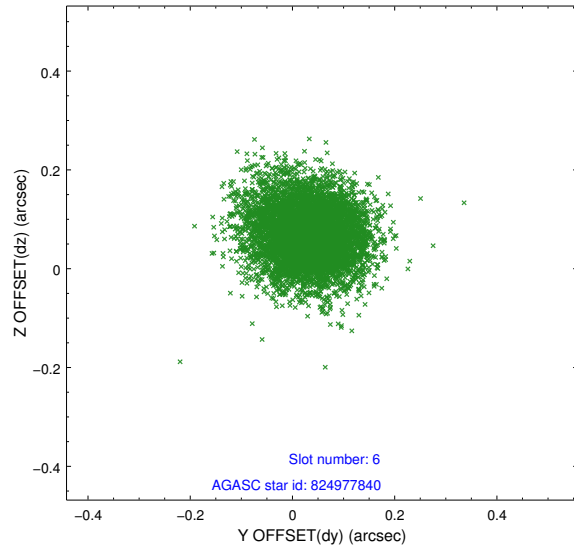
## 2.4.2 Slot 4



### 2.4.3 Slot 5

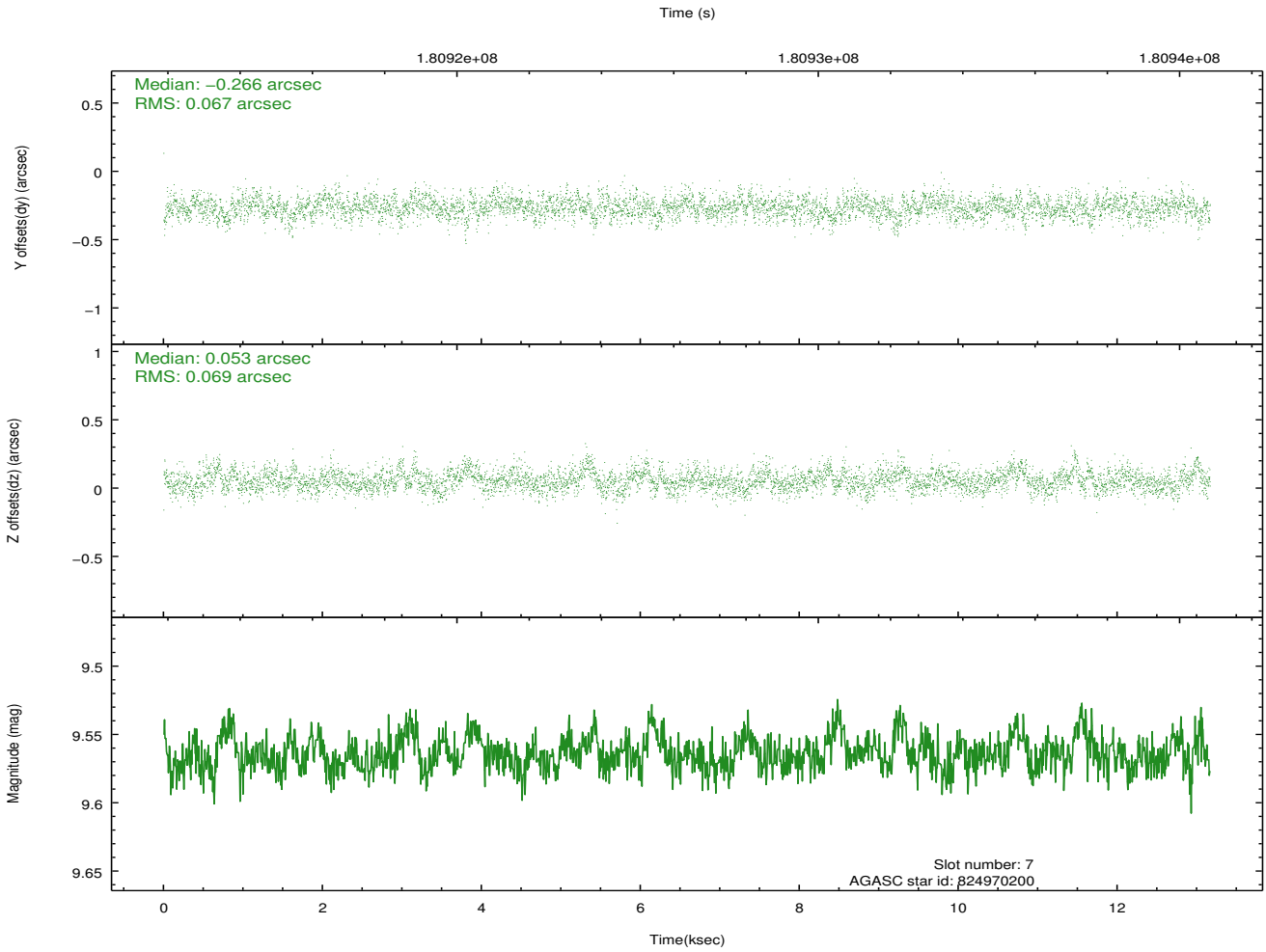
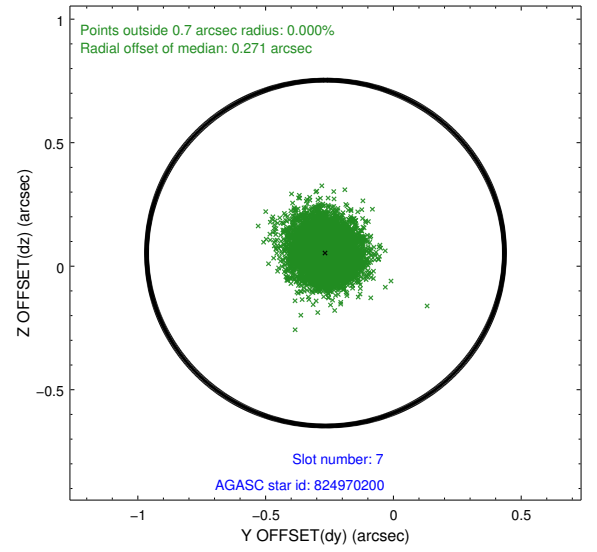
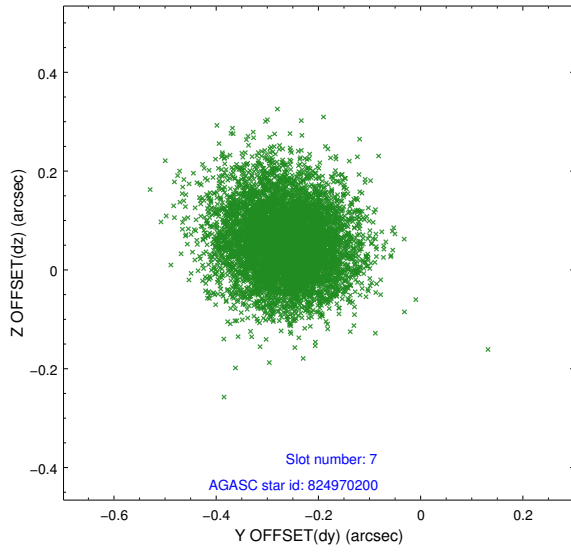


## 2.4.4 Slot 6



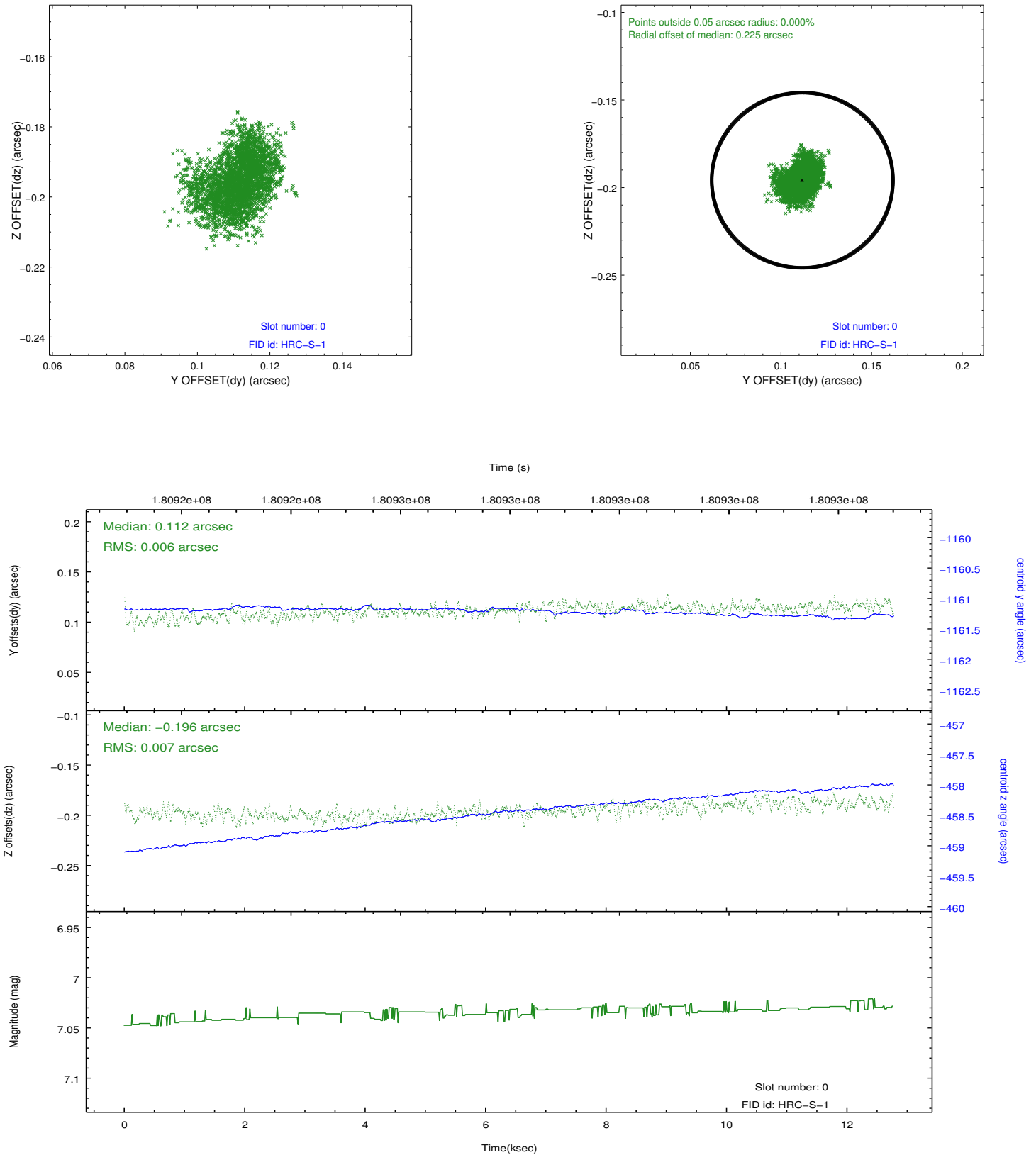


## 2.4.5 Slot 7

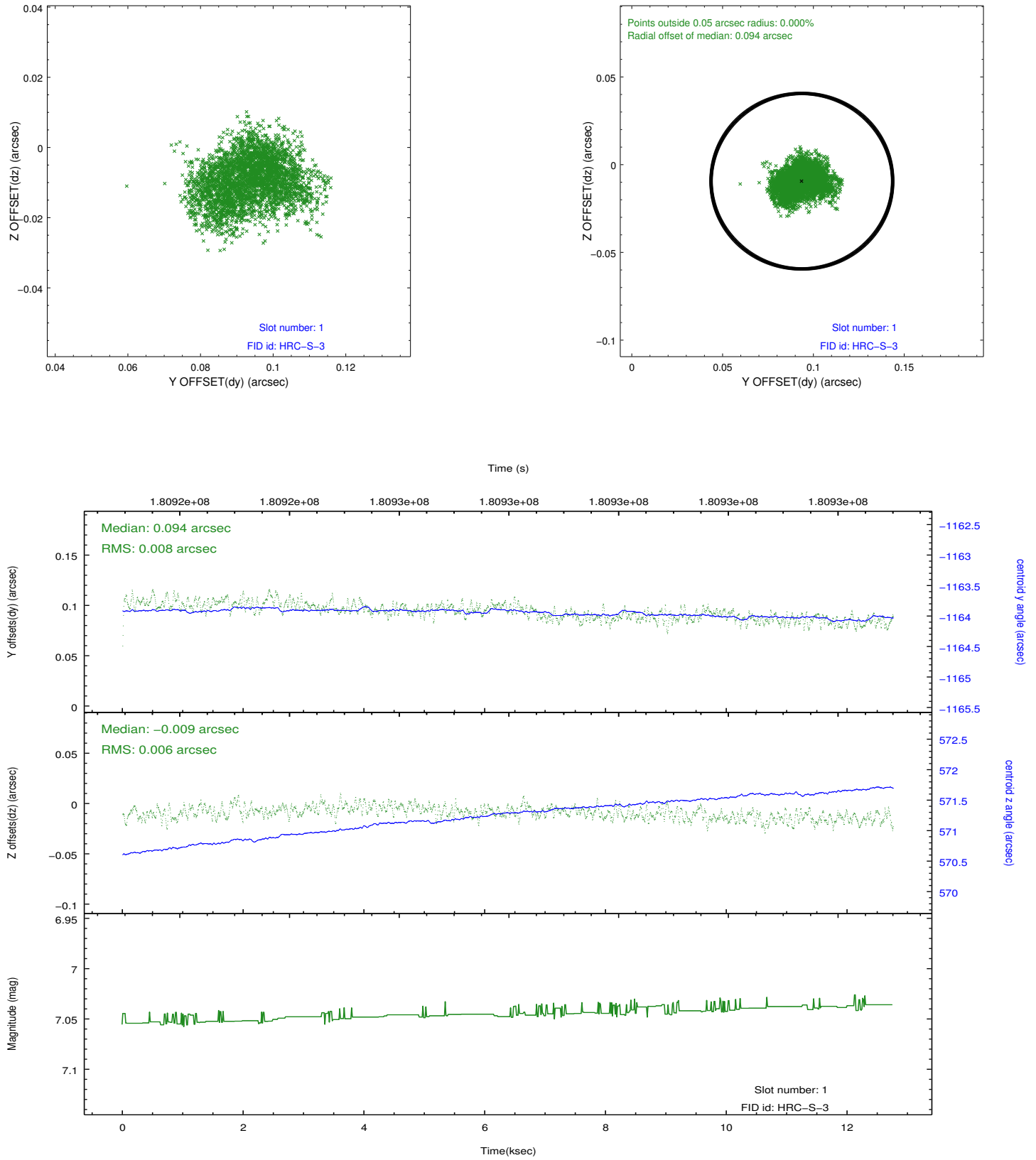


## 2.5 FID Slots

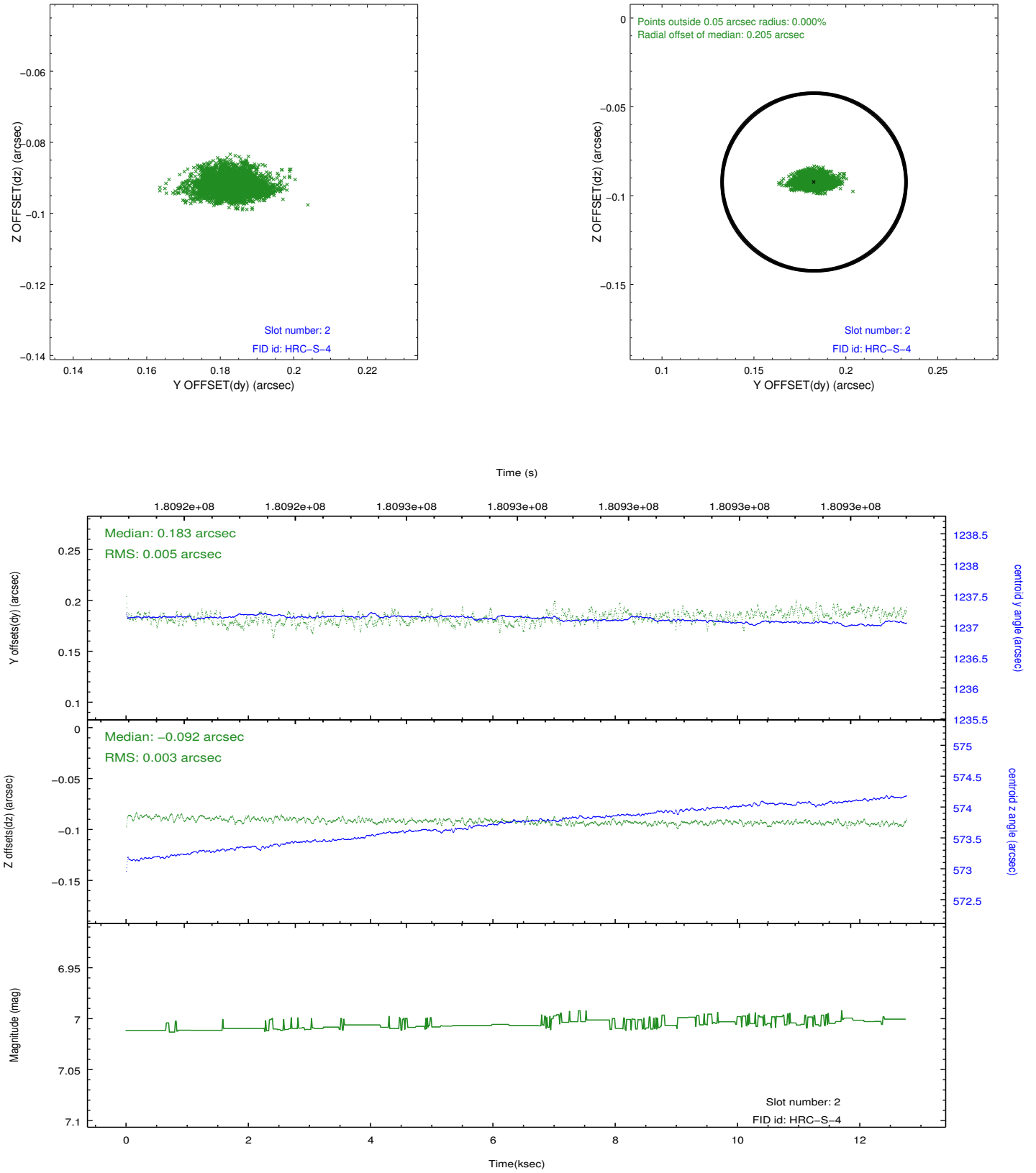
### 2.5.1 Slot 0



## 2.5.2 Slot 1

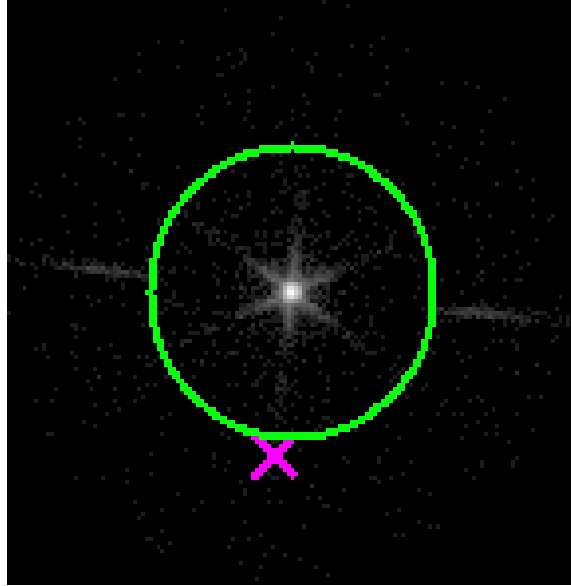


### 2.5.3 Slot 2

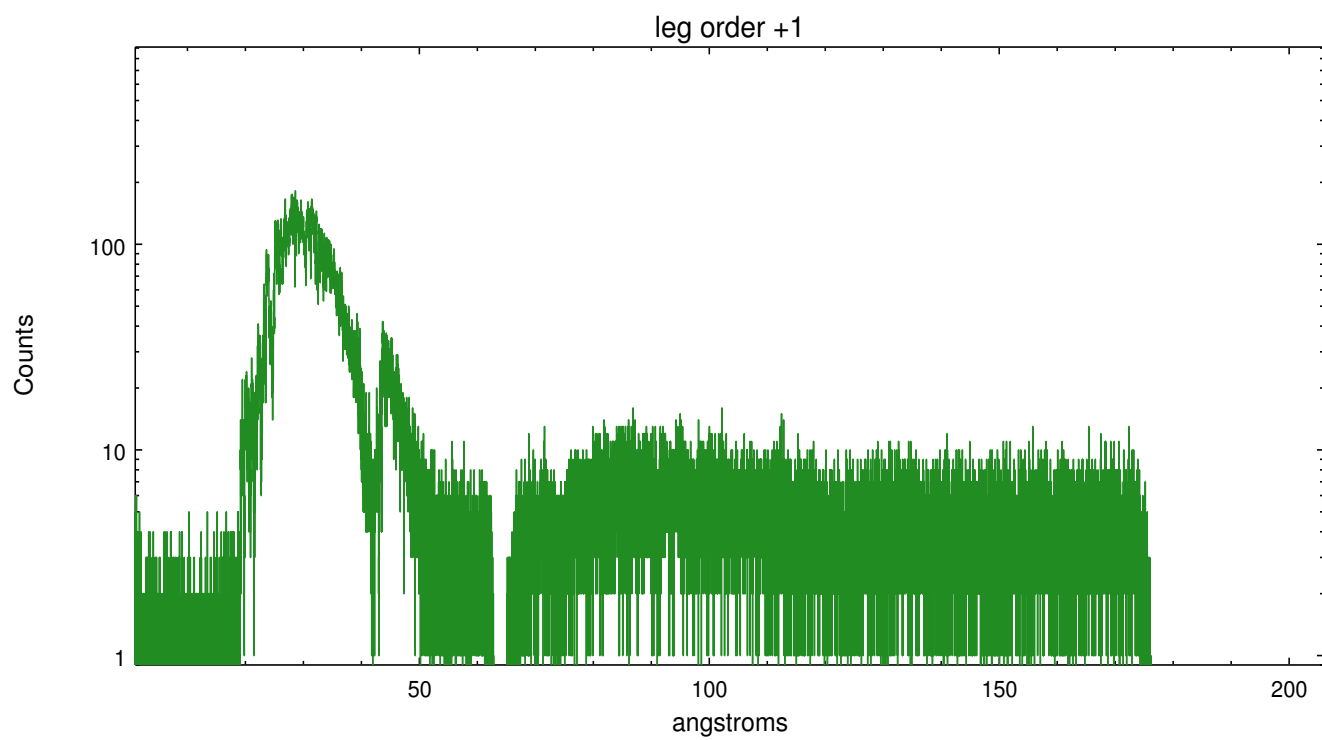
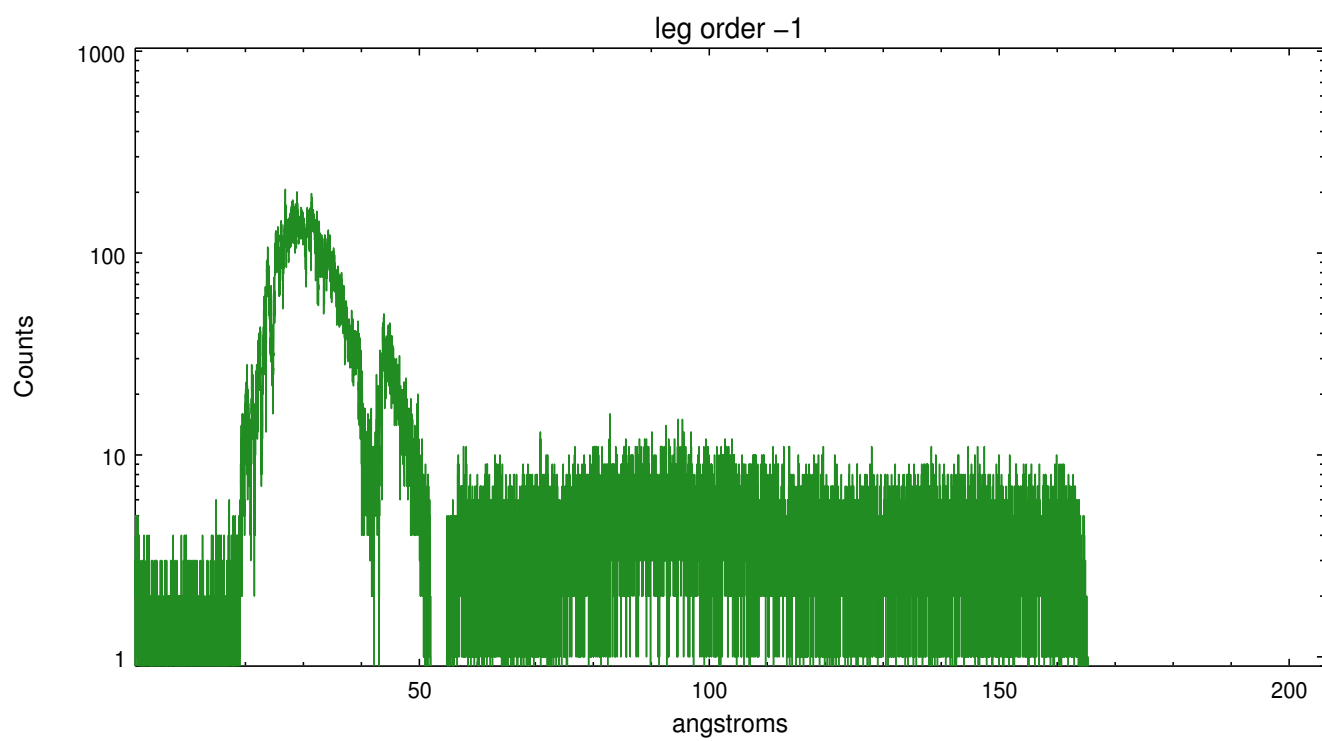


## 3 Gratings

### 3.1 LETG Arm



LETG Zero Order



## A Summary

### A.1 Status

V&V Scientist	Joy Nichols
V&V Date (YYYY-MM-DD)	2012.12.18
V&V Edition	1
V&V Disposition and Status	OK
V&V Charge Time	12.343

### A.2 Comments