

V&V Reference Report

L2 ASCDS Version : 7.6.8

Observation 4435 - L2 Version 001
Chandra X-Ray Center

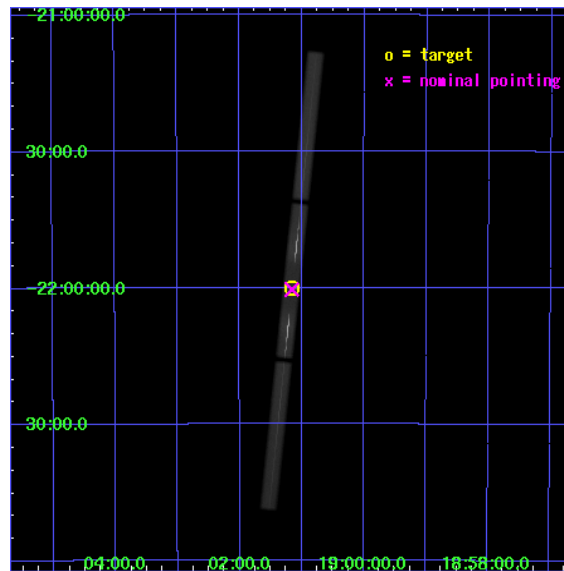
L2 Processing Date : Jul 3 2006

Contents

1	Front	2
2	OBI	3
2.1	OBI	3
2.1.1	Images	3
2.1.2	Parameters	4
2.1.3	Events	4
2.2	Compared Parameters	5
2.3	Aspect	6
2.4	Star Slots	9
2.4.1	Slot 3	9
2.4.2	Slot 4	10
2.4.3	Slot 5	11
2.4.4	Slot 6	12
2.4.5	Slot 7	13
2.5	FID Slots	14
2.5.1	Slot 0	14
2.5.2	Slot 1	15
2.5.3	Slot 2	16
3	Gratings	17
3.1	LETG Arm	17
A	Summary	19
A.1	Status	19
A.2	Comments	19

1 Front

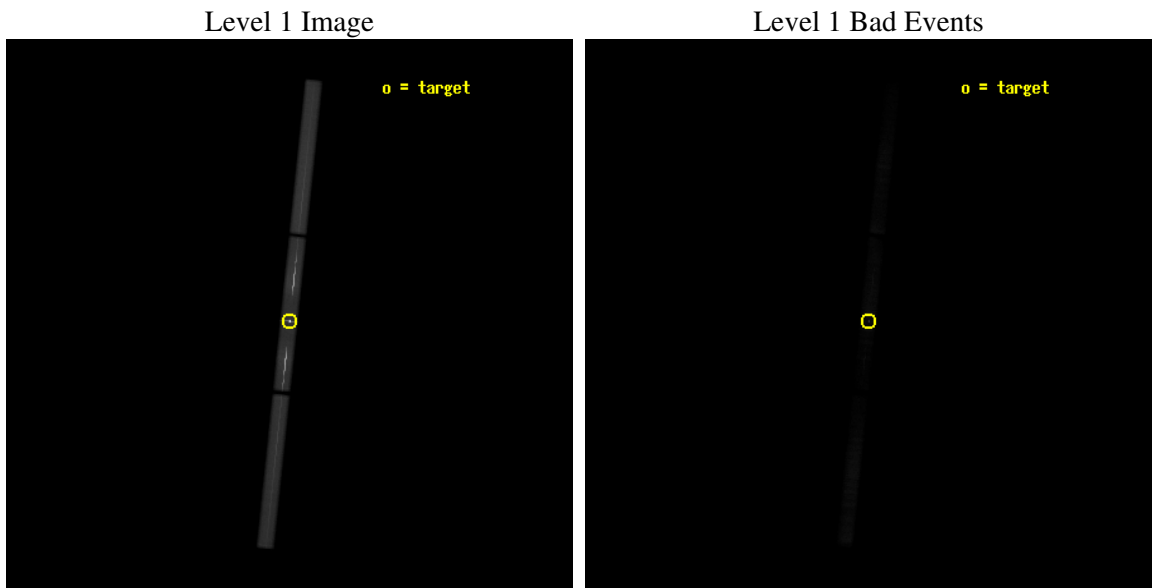
seq_num	300101
obs_id	4435
title	MULTIWAVELENGTH TARGET OF OPPORTUNITY OBSERVATIONS OF A BRIGHT NOVA IN OUTBURST
observer	Professor Sumner Starrfield
object	V4743 Sgr
ra_targ	285.289083
dec_targ	-22.001639
ra_nom	285.28943579811
dec_nom	-22.006267998385
roll_nom	275.9591865514
revision	2
ontime	12343.306779653
livetime	11485.552460339
l2events	2028492



2 OBI

2.1 OBI

2.1.1 Images



2.1.2 Parameters

obi_num	0
ascdsver	7.6.8
caldbver	3.2.2
date	2006-07-03T02:09:51
revision	2

sched_exp_time	12110.305000
ontime	12423.000533074
l1events	2281247

2.1.3 Events

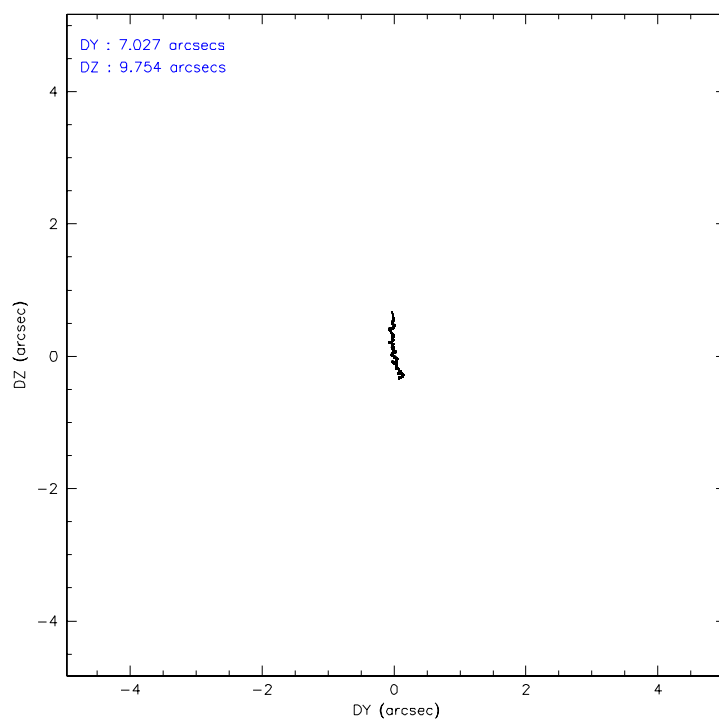
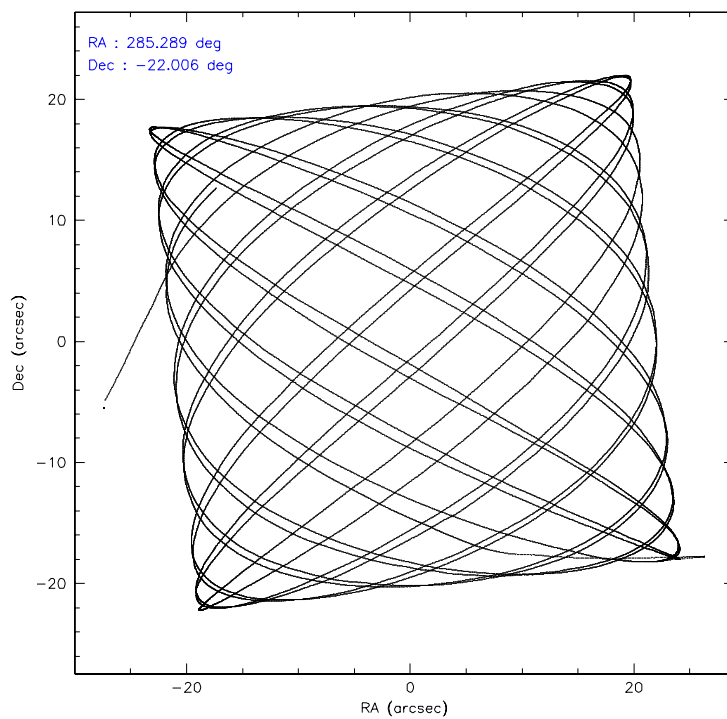
Level 1 Events

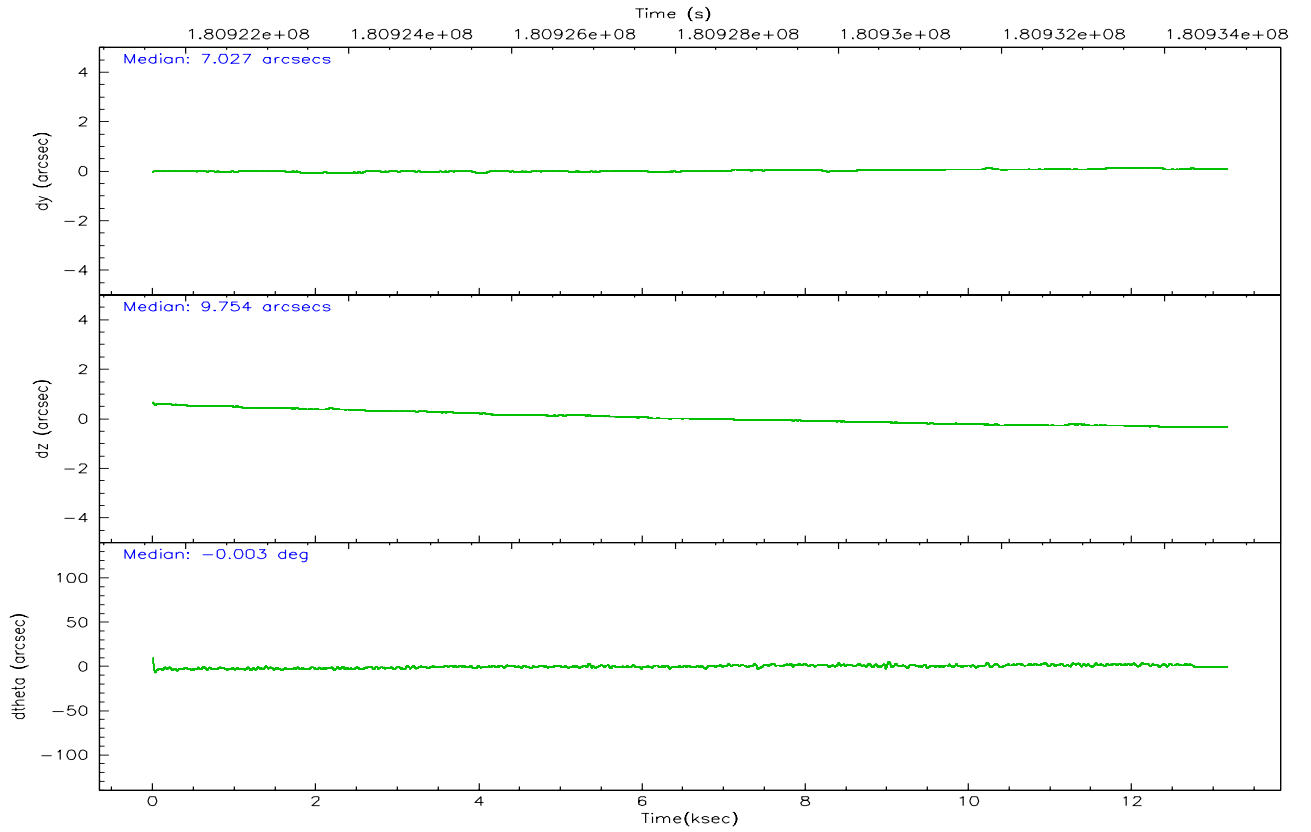
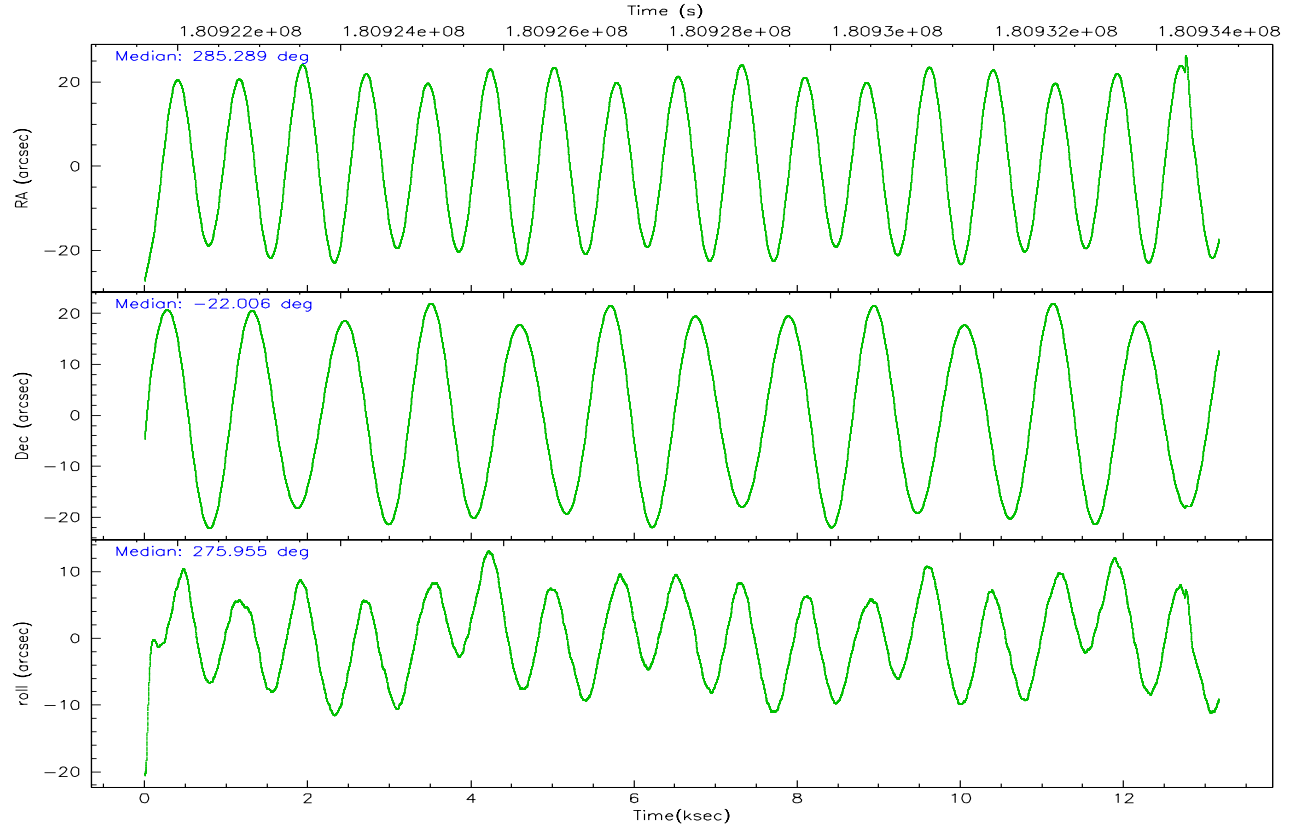
	segment 1	segment 2	segment 3
level 1 events	630546	1112541	538160
rejected events	43624	51656	60324
rejected %	6%	4%	11%

2.2 Compared Parameters

Parameter	Planned	Actual	Parameter	Planned	Actual
Instrument	HRC	HRC	Obspar format version number	6	6
Detector	HRC-S	HRC-S	Obspar file type	PREDICTED	ACTUAL
Grating	LETG	LETG	Obspar update status	NONE	UPDATED
Data mode	OBSERVING	OBSERVING			
Observation mode	POINTING	POINTING			
Pointing RA	285.270139	285.2894357981118			
Pointing Dec	-21.984017	-22.00626799838525			
Pointing Roll	275.884638	275.959186551401			
SIM focus pos (mm)	-1.429586	-1.428180813131781			
SIM defocus (mm)	0.1037507710433287	0.1051558262725154			
SIM translation stage pos (mm)	250.455976	250.4635187648994			
SIM translation stage offset (mm)	0	-0.007540371344731511			
Observation start time	180921764.184000	180921110.12307			
Observation start date	2003-09-26T00:01:40	2003-09-25T23:51:50			
Observation end time	180933874.184000	180935487.79868			
Observation end date	2003-09-26T03:23:30	2003-09-26T03:51:27			

2.3 Aspect



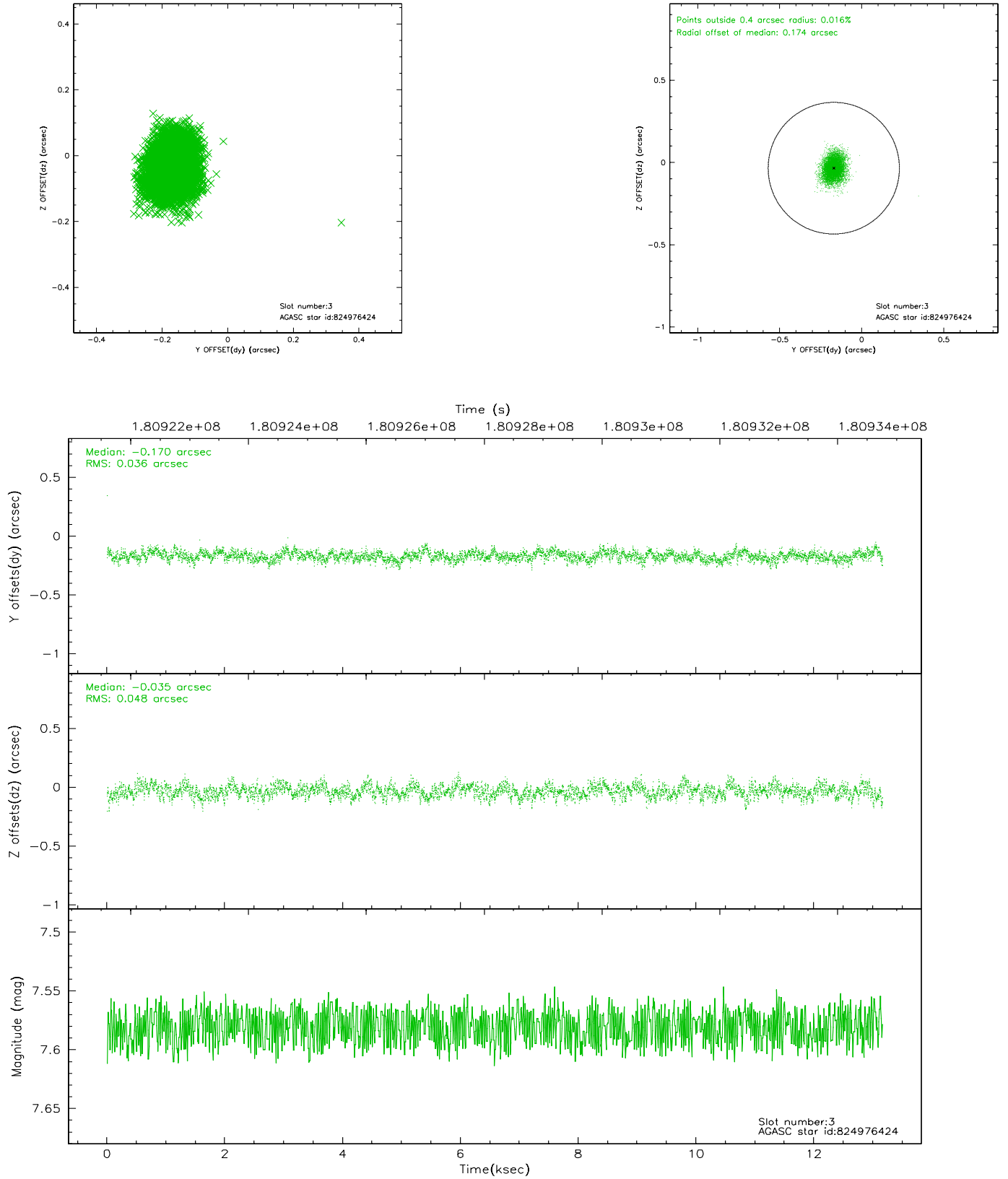


Slot Statistics

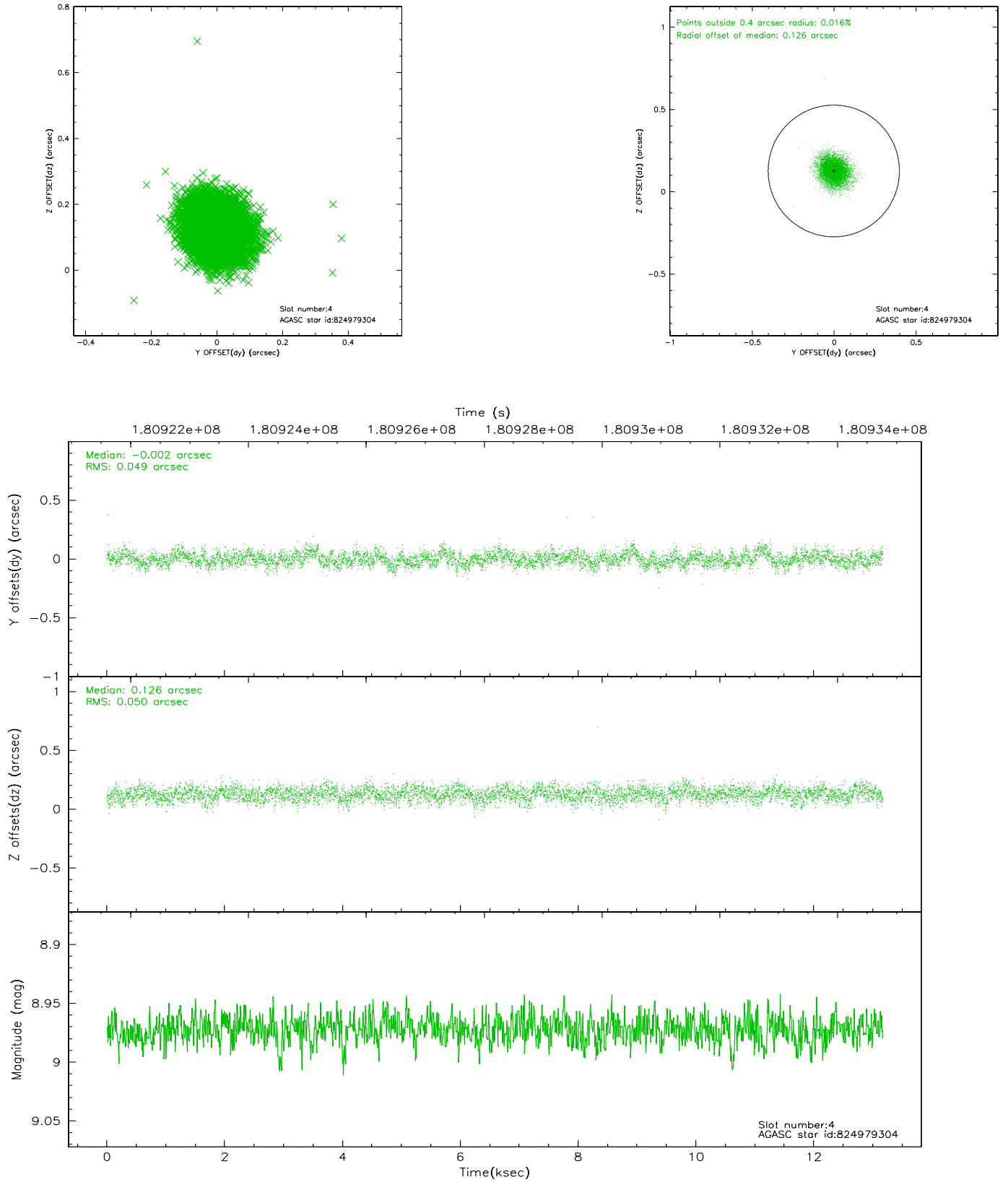
slot	status	id	mag	n_pts	med_dy	med_dz	dr1	dr2	ra	dec	mean_y	mean_z
0	FID	HRC-S-1	7.03	3115	0.112	-0.196	0.010	0.015	0.000000	0.000000	-1161.21	-458.48
1	FID	HRC-S-3	7.05	3113	0.094	-0.009	0.011	0.017	0.000000	0.000000	-1164.32	571.09
2	FID	HRC-S-4	7.01	3113	0.183	-0.092	0.006	0.011	0.000000	0.000000	1236.75	573.90
3	GUIDE	824976424	7.58	6423	-0.170	-0.035	0.063	0.105	284.900091	-21.828249	-682.68	-1172.58
4	GUIDE	824979304	8.97	6419	-0.002	0.126	0.074	0.120	285.497931	-22.093264	470.03	715.76
5	GUIDE	899154168	9.44	6421	0.406	-0.215	0.123	0.202	284.628850	-22.662641	2217.51	-2369.85
6	GUIDE	824977840	9.18	6418	0.032	0.068	0.083	0.137	285.448876	-22.329632	1299.90	464.60
7	GUIDE	824970200	9.56	6414	-0.266	0.053	0.101	0.166	284.845750	-21.379569	-2307.48	-1192.45

2.4 Star Slots

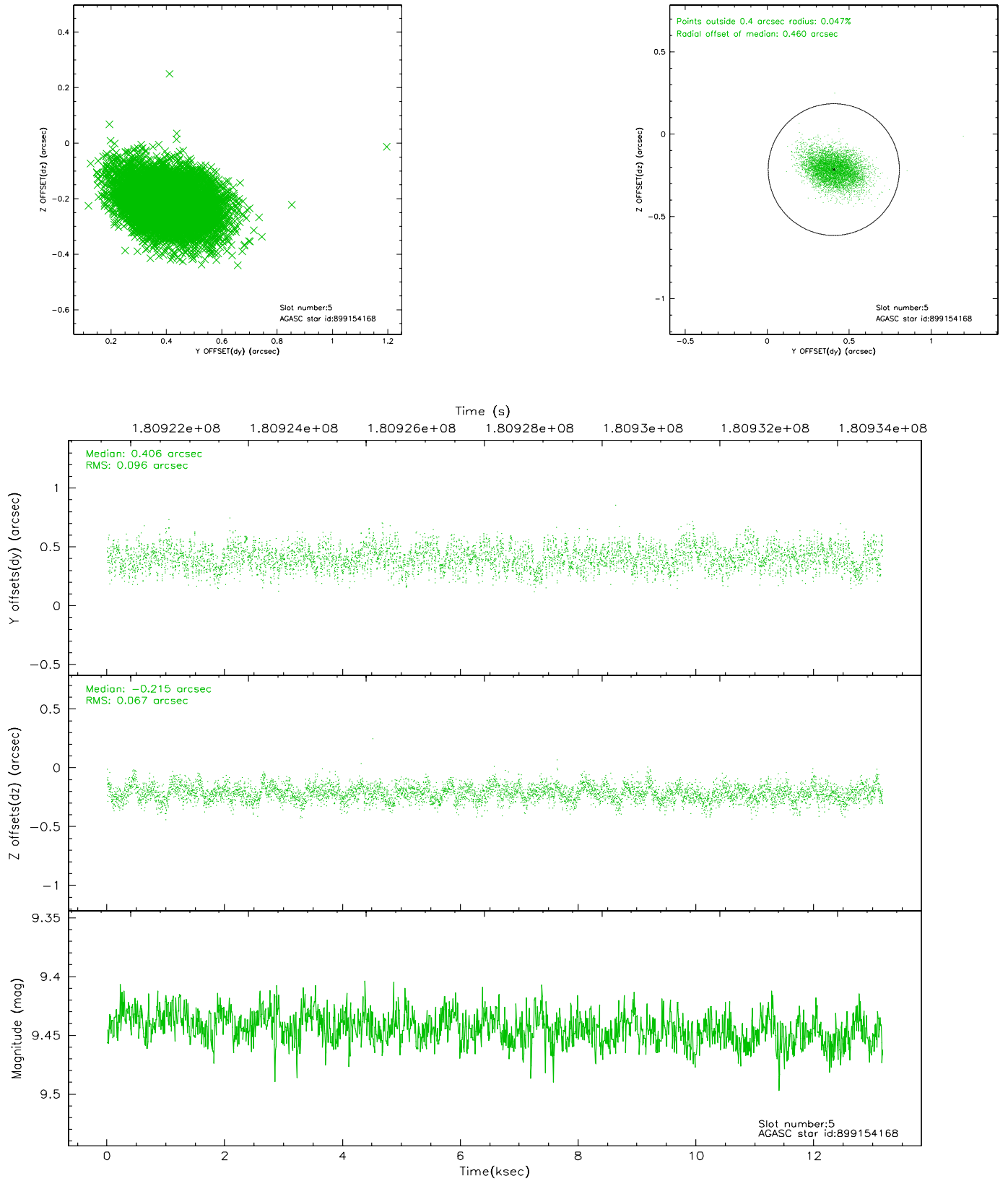
2.4.1 Slot 3



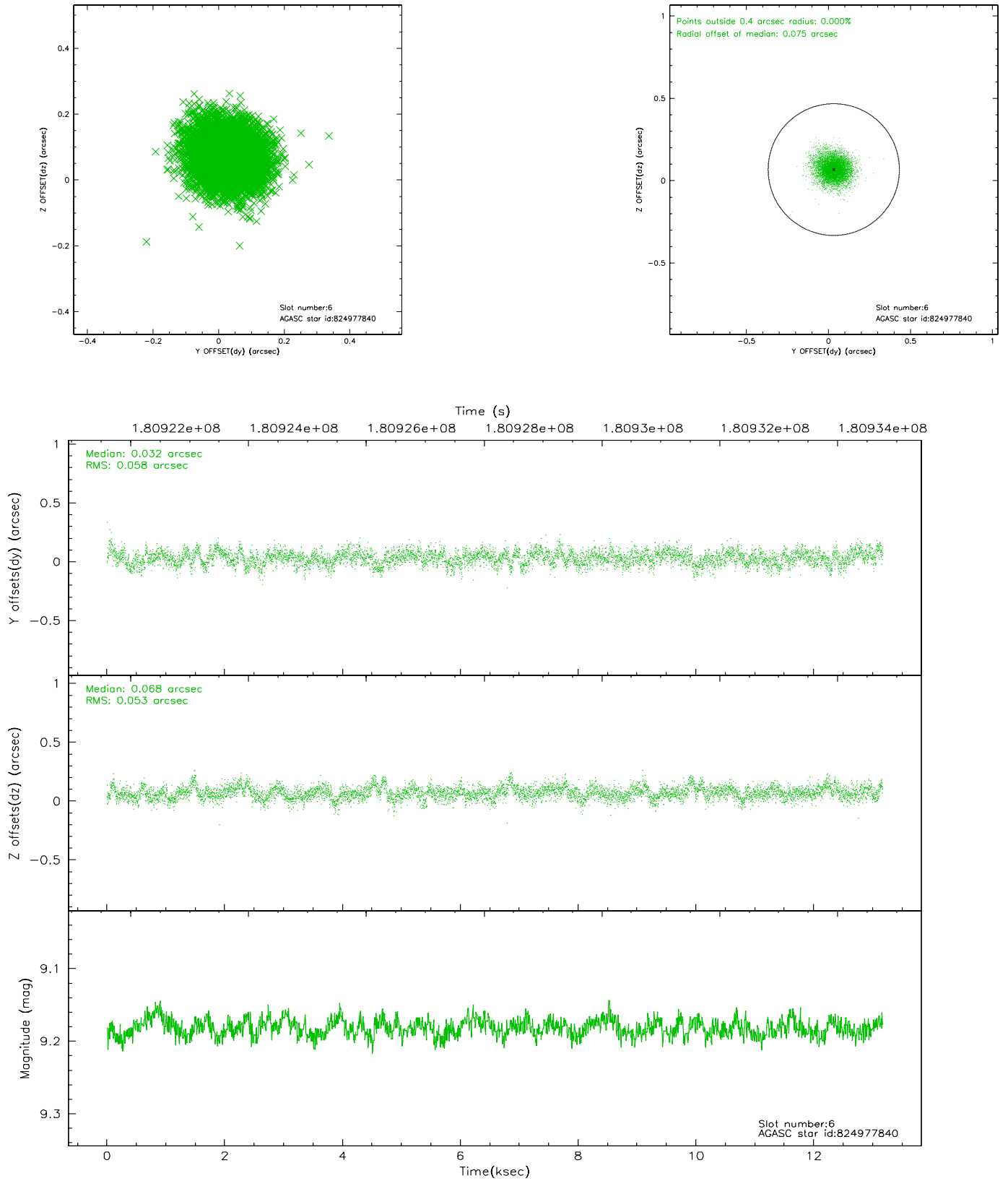
2.4.2 Slot 4



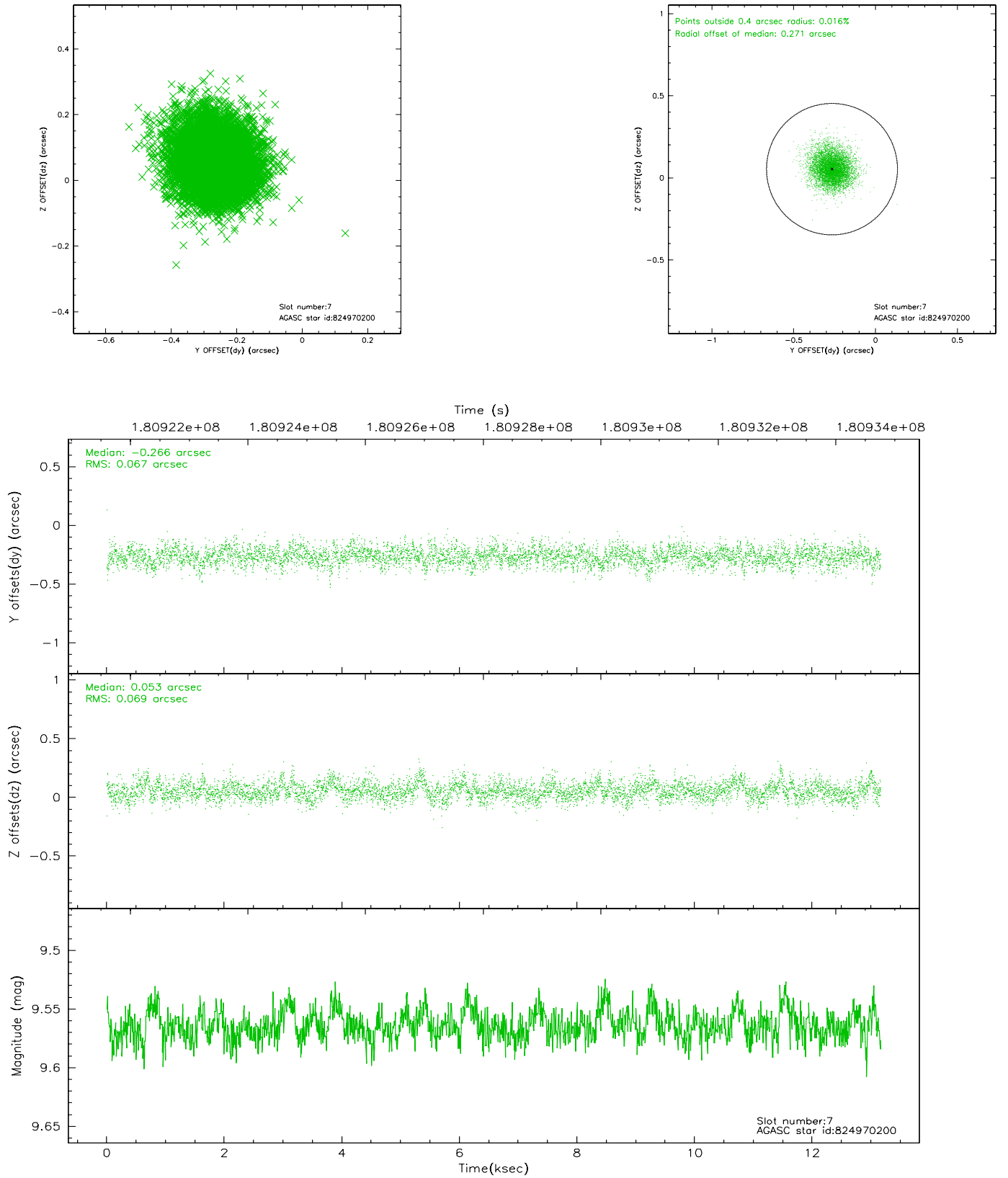
2.4.3 Slot 5



2.4.4 Slot 6

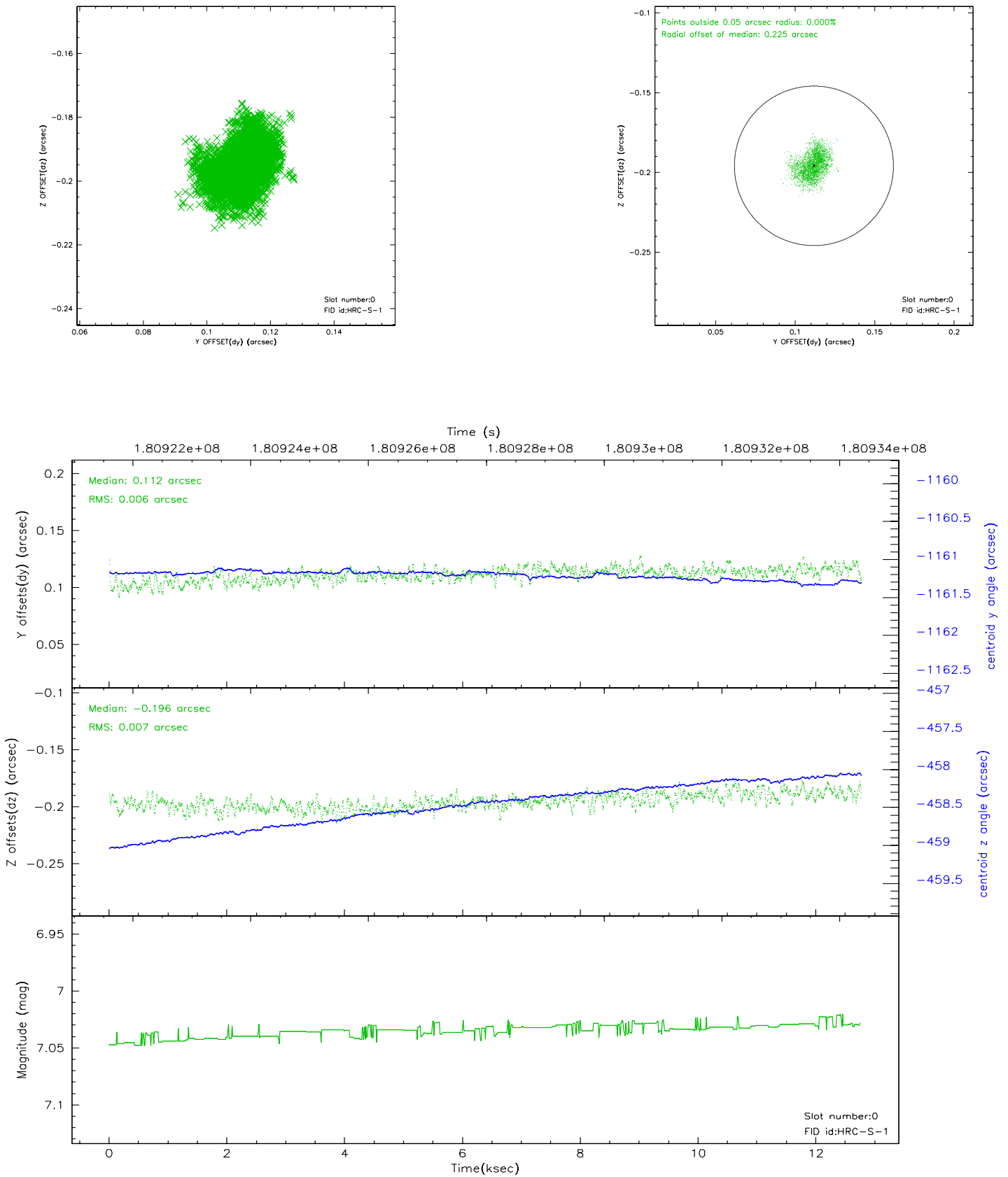


2.4.5 Slot 7

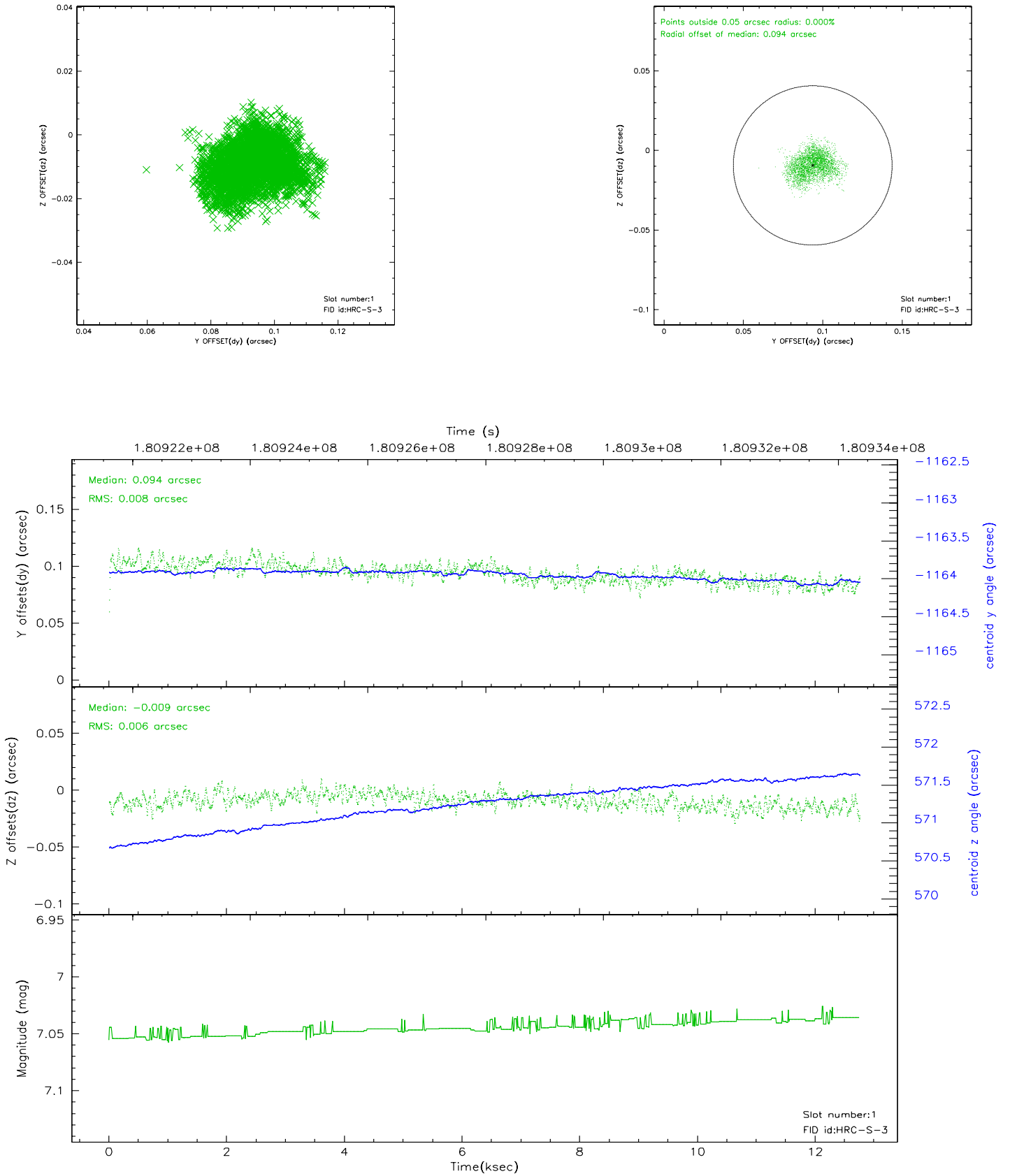


2.5 FID Slots

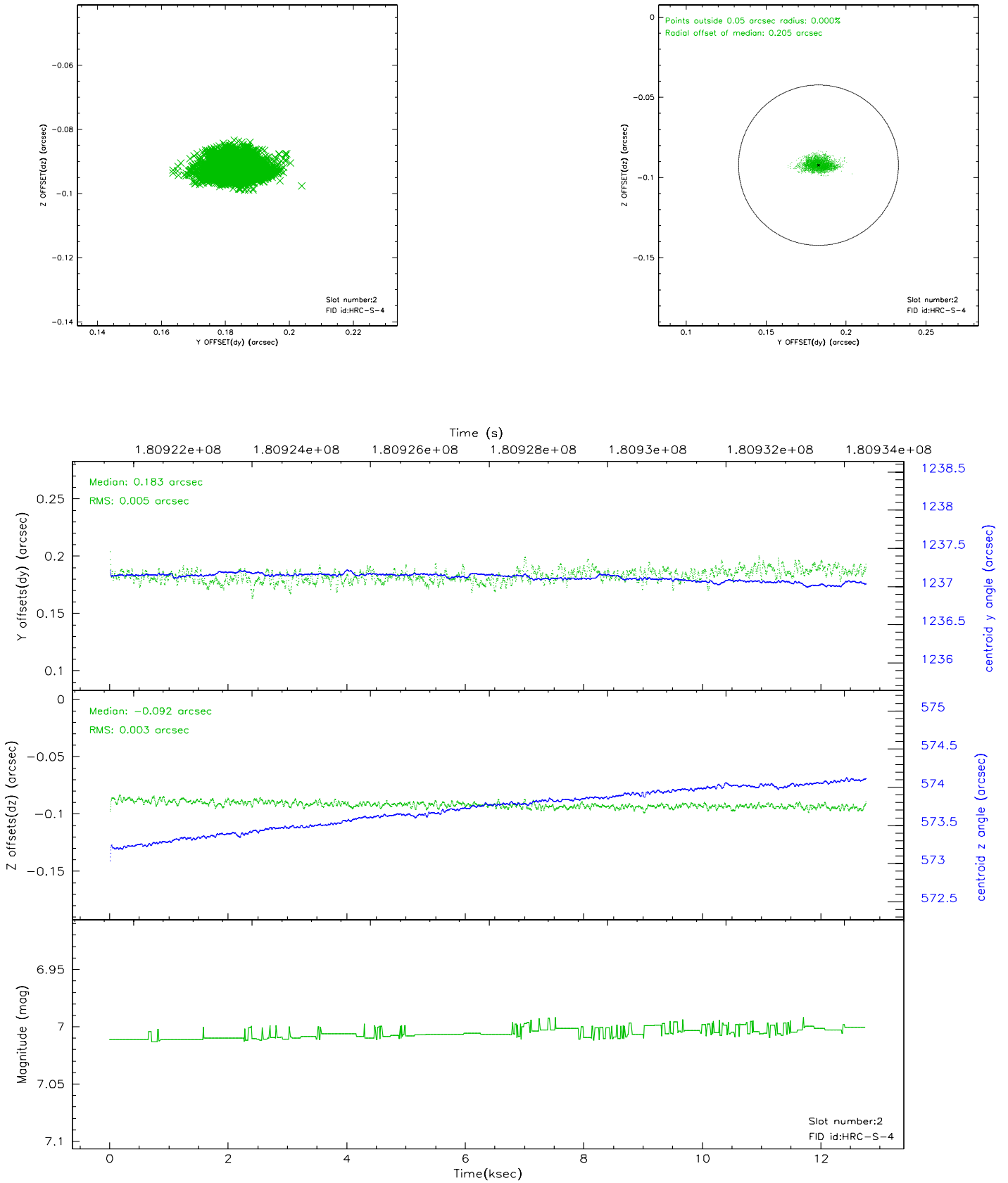
2.5.1 Slot 0



2.5.2 Slot 1

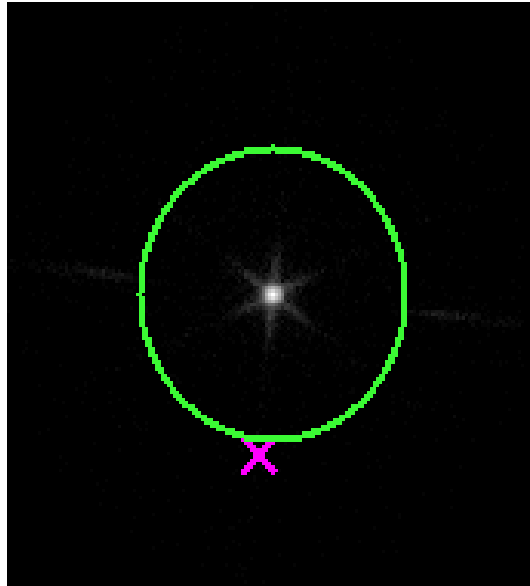


2.5.3 Slot 2



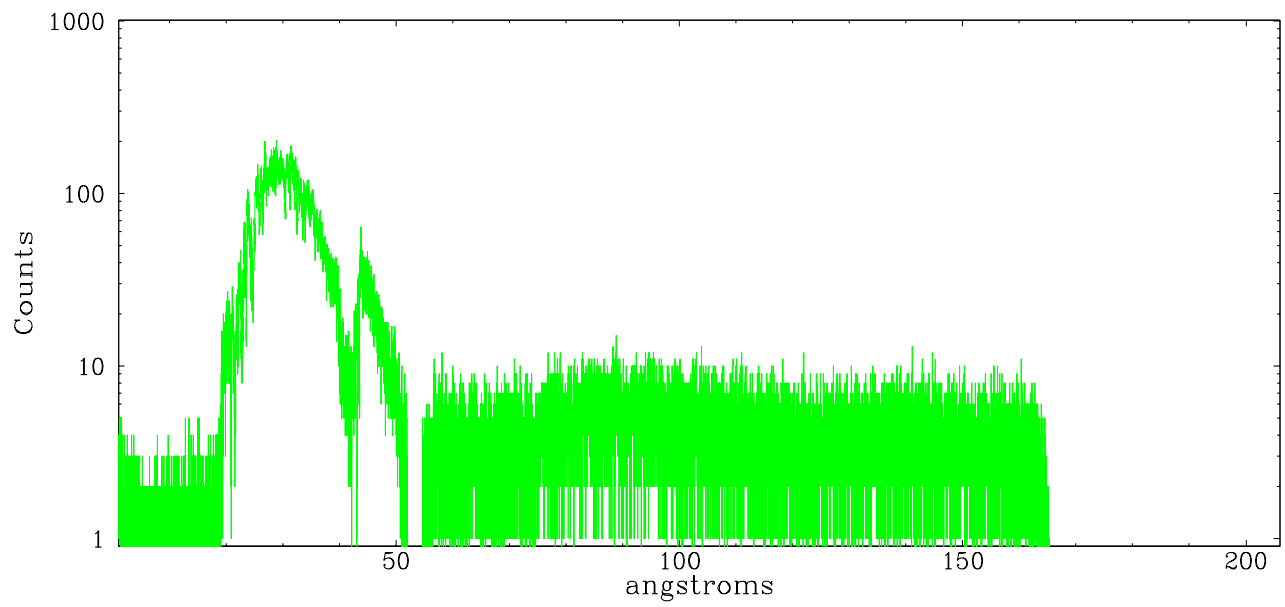
3 Gratings

3.1 LETG Arm

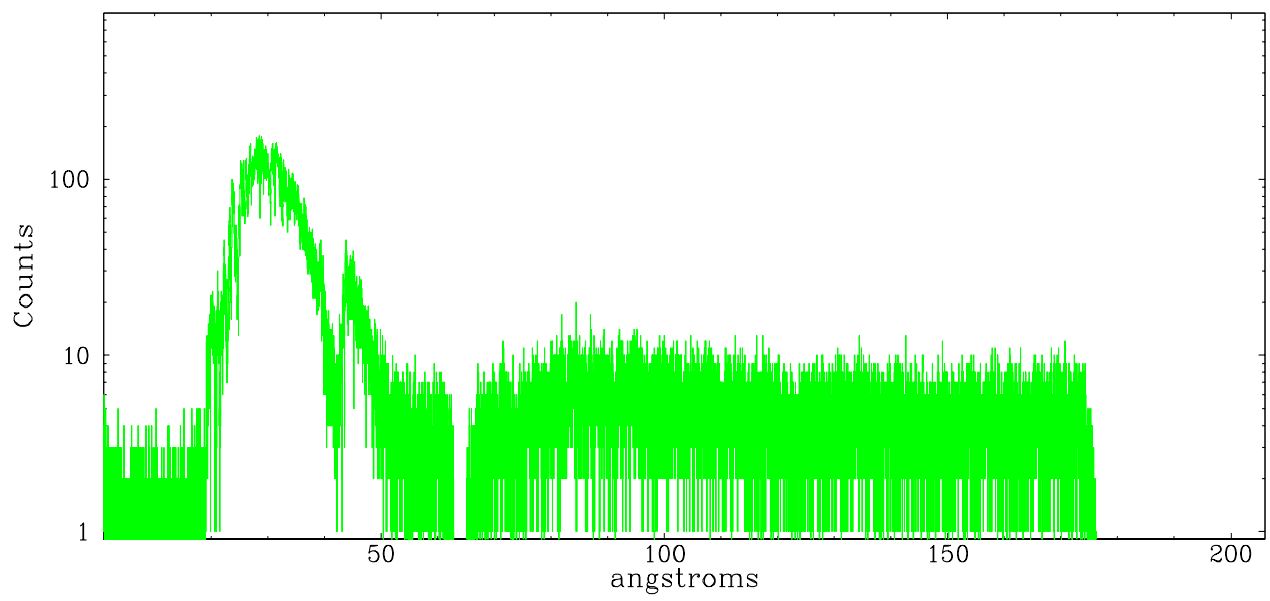


LETG Zero Order

leg order -1



leg order $+1$



A Summary

A.1 Status

V&V Scientist	Beth Sundheim
V&V Date (YYYY-MM-DD)	2006.07.03
V&V Edition	1
V&V Disposition and Status	OK
V&V Charge Time	12.343

A.2 Comments