

V&V Reference Report

L2 ASCDS Version : 7.6.8

Observation 4397 - L2 Version 001
Chandra X-Ray Center

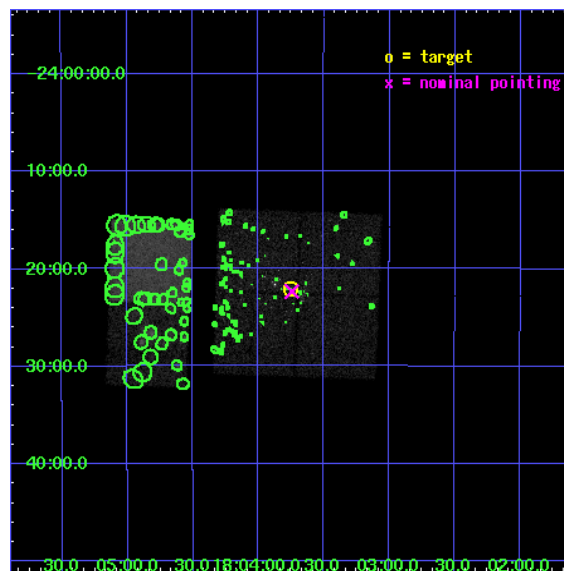
L2 Processing Date : Jul 12 2006

Contents

1	Front	2
2	OBI	3
2.1	OBI	3
2.1.1	Images	3
2.1.2	Bias	3
2.1.3	Parameters	4
2.1.4	Events	4
2.2	Compared Parameters	5
2.3	Aspect	6
2.4	Star Slots	9
2.4.1	Slot 3	9
2.4.2	Slot 4	10
2.4.3	Slot 5	11
2.4.4	Slot 6	12
2.4.5	Slot 7	13
2.5	FID Slots	14
2.5.1	Slot 0	14
2.5.2	Slot 1	15
2.5.3	Slot 2	16
3	Point Sources	17
A	Summary	18
A.1	Status	18
A.2	Comments	18

1 Front

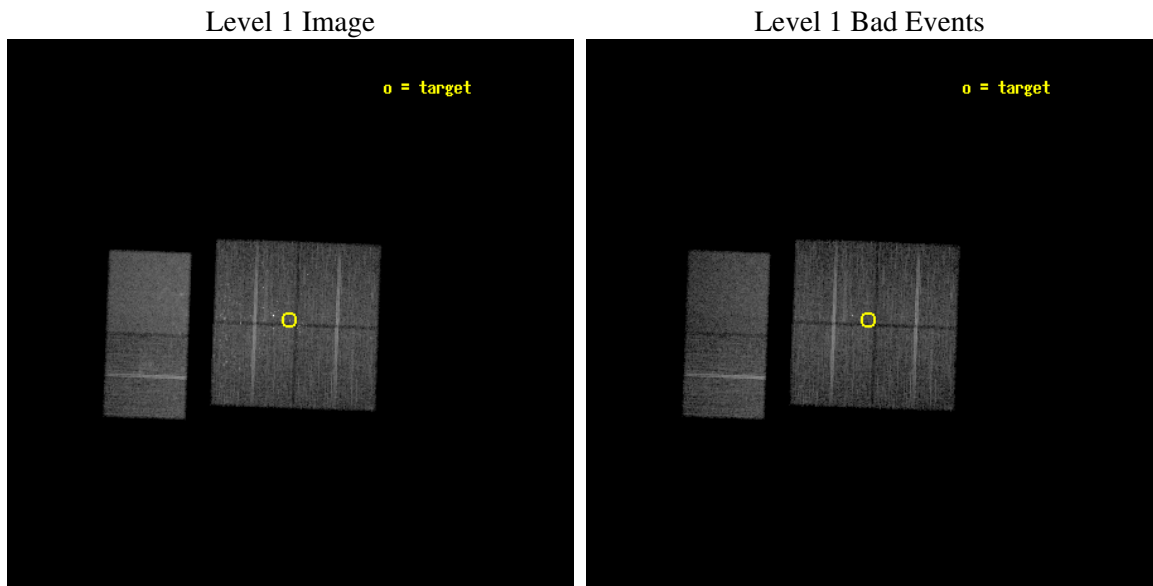
seq_num	200224
obs_id	4397
title	DEEP INSIDE THE LAGOON NEBULA
observer	Marc Gagne
object	M8
dtcycle	0
cycle	P
ra_targ	270.937917
dec_targ	-24.368056
ra_nom	270.93611025349
dec_nom	-24.372378114939
roll_nom	272.10793525508
revision	2
ontime	14822.399944782
livetime	14634.709791704
ontime0	14819.158954591
ontime1	14819.158954591
ontime2	14822.399944782
ontime3	14822.399944782
ontime6	14822.399944782
ontime7	14822.399944782
l2events	114505



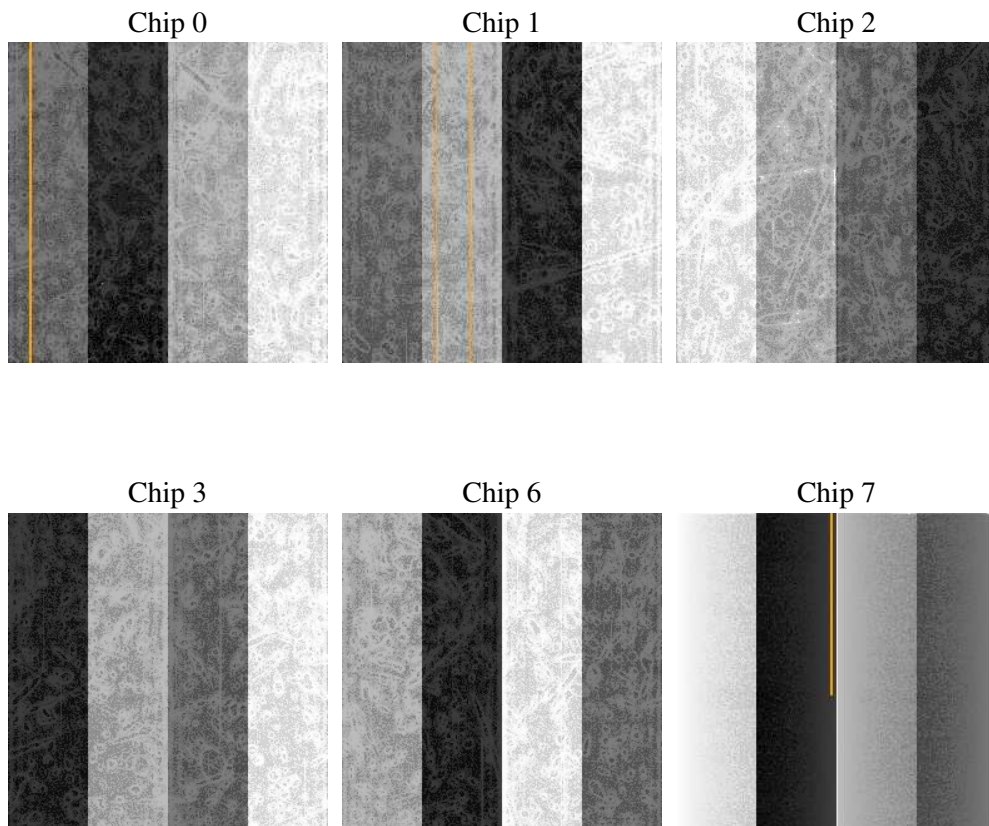
2 OBI

2.1 OBI

2.1.1 Images



2.1.2 Bias



2.1.3 Parameters

obi_num	0
ascdsver	7.6.8
caldbver	3.2.2
date	2006-07-12T11:47:49
revision	2

sched_exp_time	14687.069000
ontime	14856.764533699
ontime0	14853.523543507
ontime1	14853.523543507
ontime2	14856.764533699
ontime3	14856.764533699
ontime6	14856.764553607
ontime7	14856.764553607
l1events	592691

2.1.4 Events

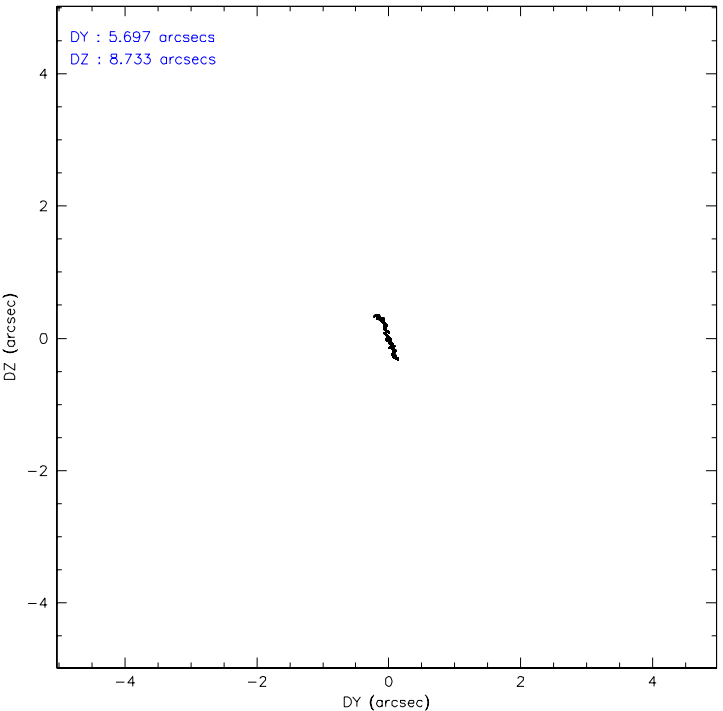
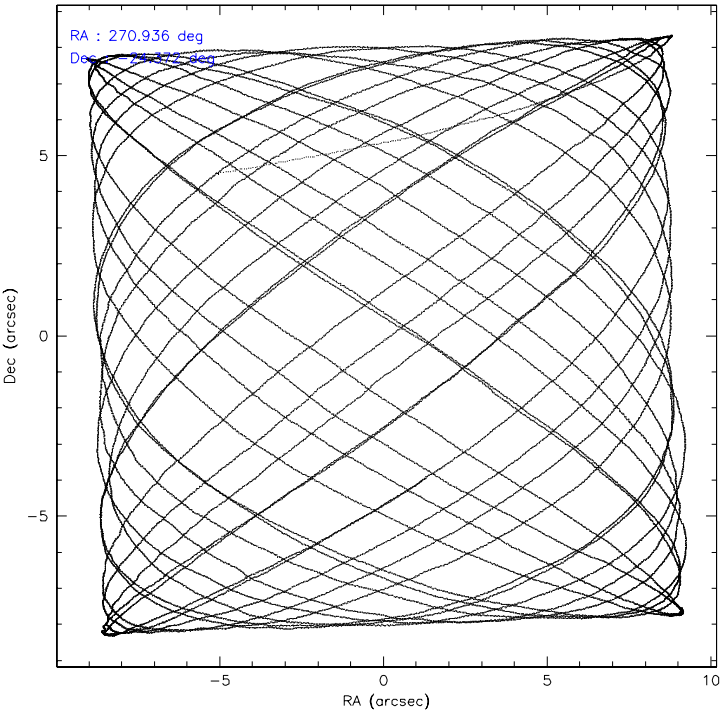
	ccd 0	ccd 1	ccd 2	ccd 3	ccd 6	ccd 7
level 1 events	84925	87939	95594	98343	99411	126479
rejected events	72529	74610	80955	79674	84403	76502
rejected %	85%	84%	84%	81%	84%	60%

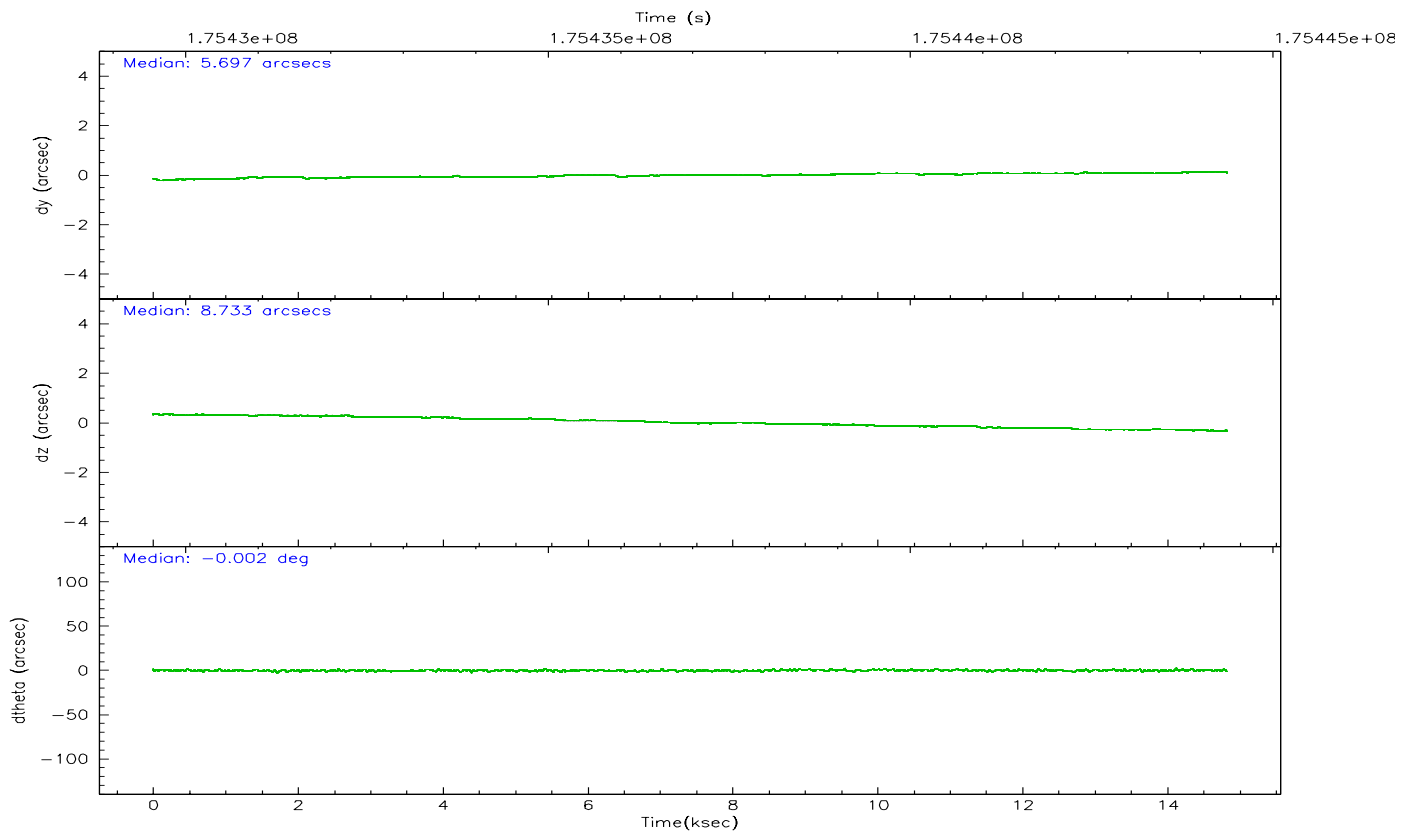
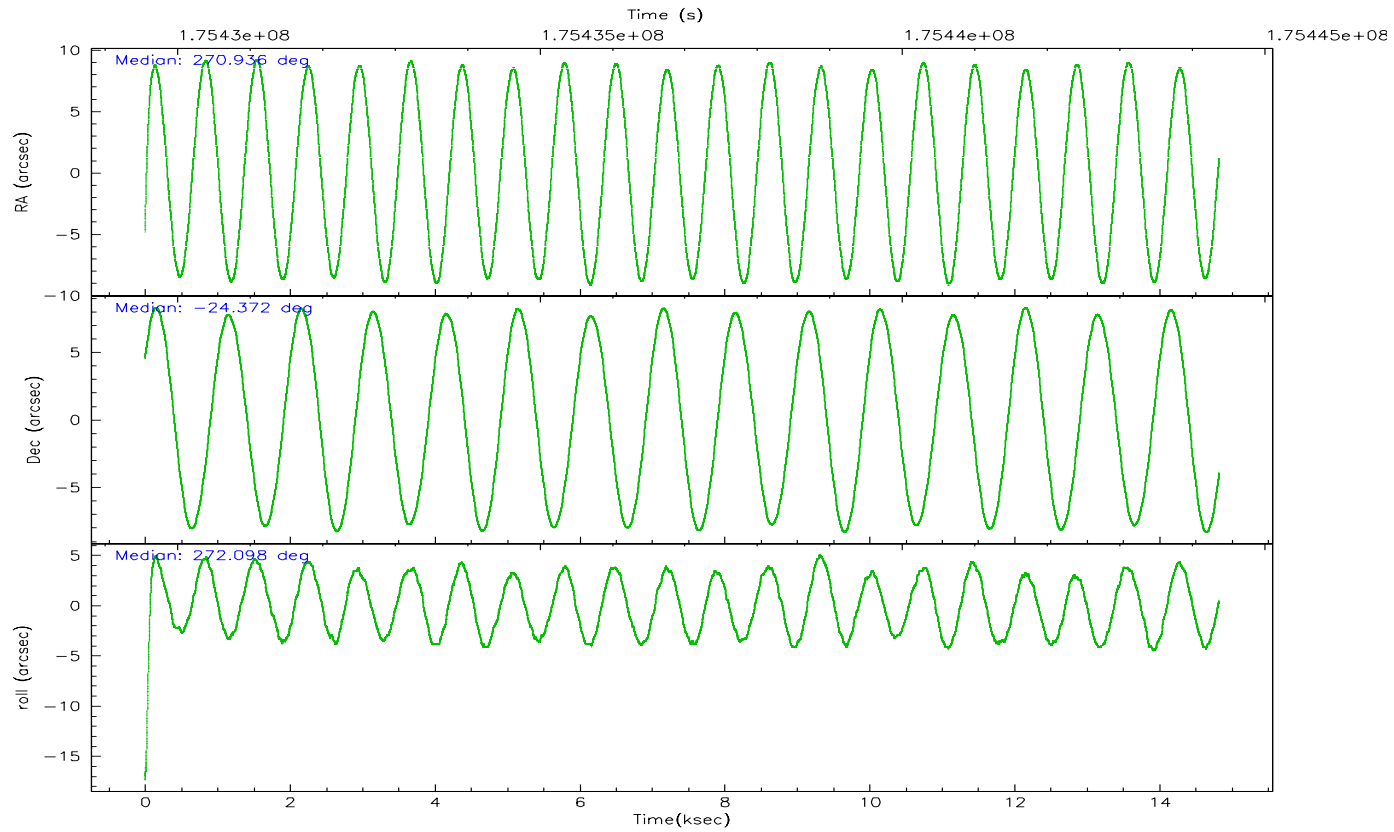
	ccd 0	ccd 1	ccd 2	ccd 3	ccd 6	ccd 7
grade 0 events	5953	6026	8105	11275	7569	3524
	7%	6%	8%	11%	7%	2%
grade 1 events	47	66	70	266	52	93
	0%	0%	0%	0%	0%	0%
grade 2 events	2399	2596	2438	2856	2679	12571
	2%	2%	2%	2%	2%	9%
grade 3 events	1121	1204	1110	1272	1208	2791
	1%	1%	1%	1%	1%	2%
grade 4 events	1017	1214	1155	1306	1274	2777
	1%	1%	1%	1%	1%	2%
grade 5 events	3591	3868	3492	4140	4240	8347
	4%	4%	3%	4%	4%	6%
grade 6 events	1936	2320	1857	2000	2321	28413
	2%	2%	1%	2%	2%	22%
grade 7 events	68861	70645	77367	75228	80068	67963
	81%	80%	80%	76%	80%	53%

2.2 Compared Parameters

Parameter	Planned	Actual	Parameter	Planned	Actual
Instrument	ACIS	ACIS	Obspar format version number	6	6
Detector	ACIS-012367	ACIS-012367	Obspar file type	PREDICTED	ACTUAL
Grating	NONE	NONE	Obspar update status	NONE	UPDATED
Data mode	VFAINT	VFAINT	On-chip summing requested	N	N
Observation mode	POINTING	POINTING	Subarray requested	NONE	NONE
Pointing RA	270.920021	270.936110253492	Alternating exposures requested	N	N
Pointing Dec	-24.349255	-24.37237811493862	Primary exposure time	0.000000	3.2
Pointing Roll	271.892623	272.107935255078			
SIM focus pos (mm)	-0.782348	-0.7809083437167272			
SIM defocus (mm)	0	0.001439871863259334			
SIM translation stage pos (mm)	-233.592463	-233.5874344608287			
SIM translation stage offset (mm)	0	-0.005018542100998502			
Observation start time	175429687.184000	175428510.03808			
Observation start date	2003-07-24T10:27:03	2003-07-24T10:08:30			
Observation end time	175444374.184000	175444688.63877			
Observation end date	2003-07-24T14:31:50	2003-07-24T14:38:08			
Read mode	TIMED	TIMED			

2.3 Aspect



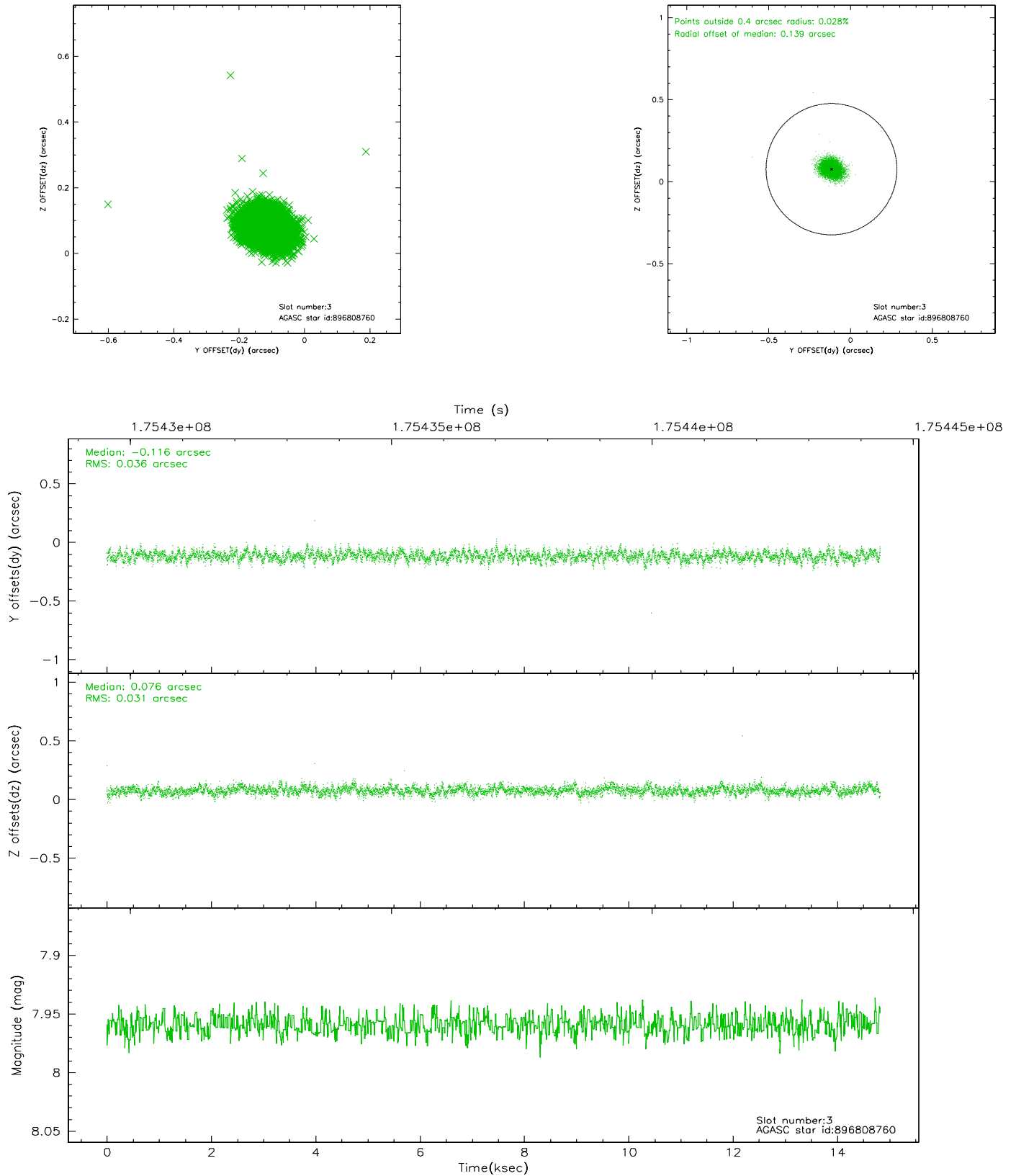


Slot Statistics

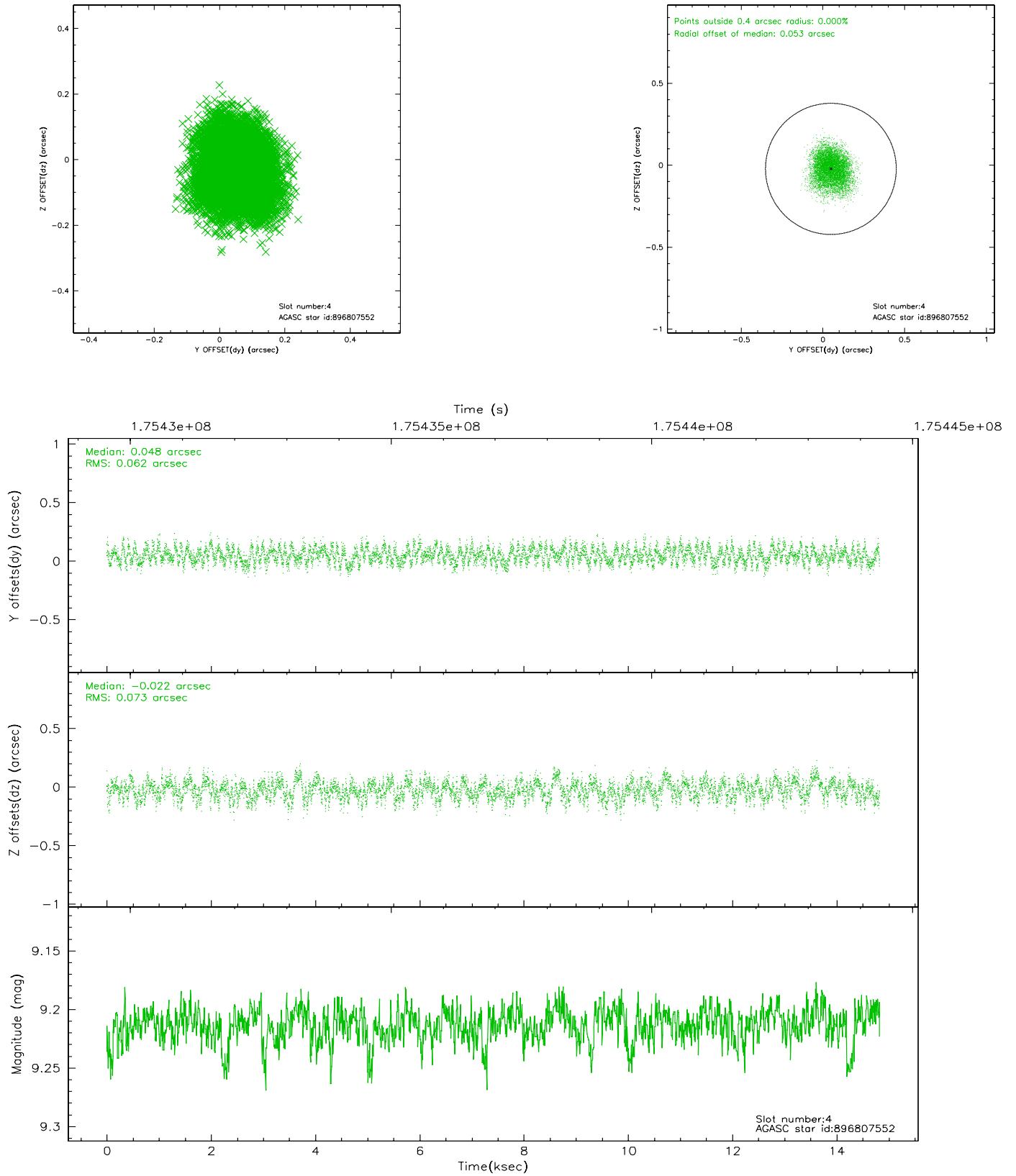
slot	status	id	mag	n_pts	med_dy	med_dz	dr1	dr2	ra	dec	mean_y	mean_z
0	FID	ACIS-I-2	7.13	3618	-0.080	-0.009	0.008	0.013	0.000000	0.000000	-760.23	-838.56
1	FID	ACIS-I-4	7.18	3617	0.001	0.055	0.012	0.019	0.000000	0.000000	2153.78	1067.51
2	FID	ACIS-I-6	7.25	3618	-0.021	0.017	0.011	0.017	0.000000	0.000000	400.32	1710.01
3	GUIDE	896808760	7.96	7234	-0.116	0.076	0.050	0.081	271.232719	-23.698206	-2307.29	1107.53
4	GUIDE	896807552	9.21	7234	0.048	-0.022	0.104	0.162	271.624054	-24.159158	-602.11	2333.89
5	GUIDE	897321504	8.81	7235	0.019	-0.021	0.093	0.151	270.176705	-24.677132	1106.69	-2468.78
6	GUIDE	897325632	8.56	7231	0.160	-0.075	0.094	0.150	270.212330	-24.788521	1511.15	-2364.13
7	GUIDE	897321352	7.41	7234	-0.110	0.046	0.047	0.084	270.295938	-25.001856	2286.32	-2112.63

2.4 Star Slots

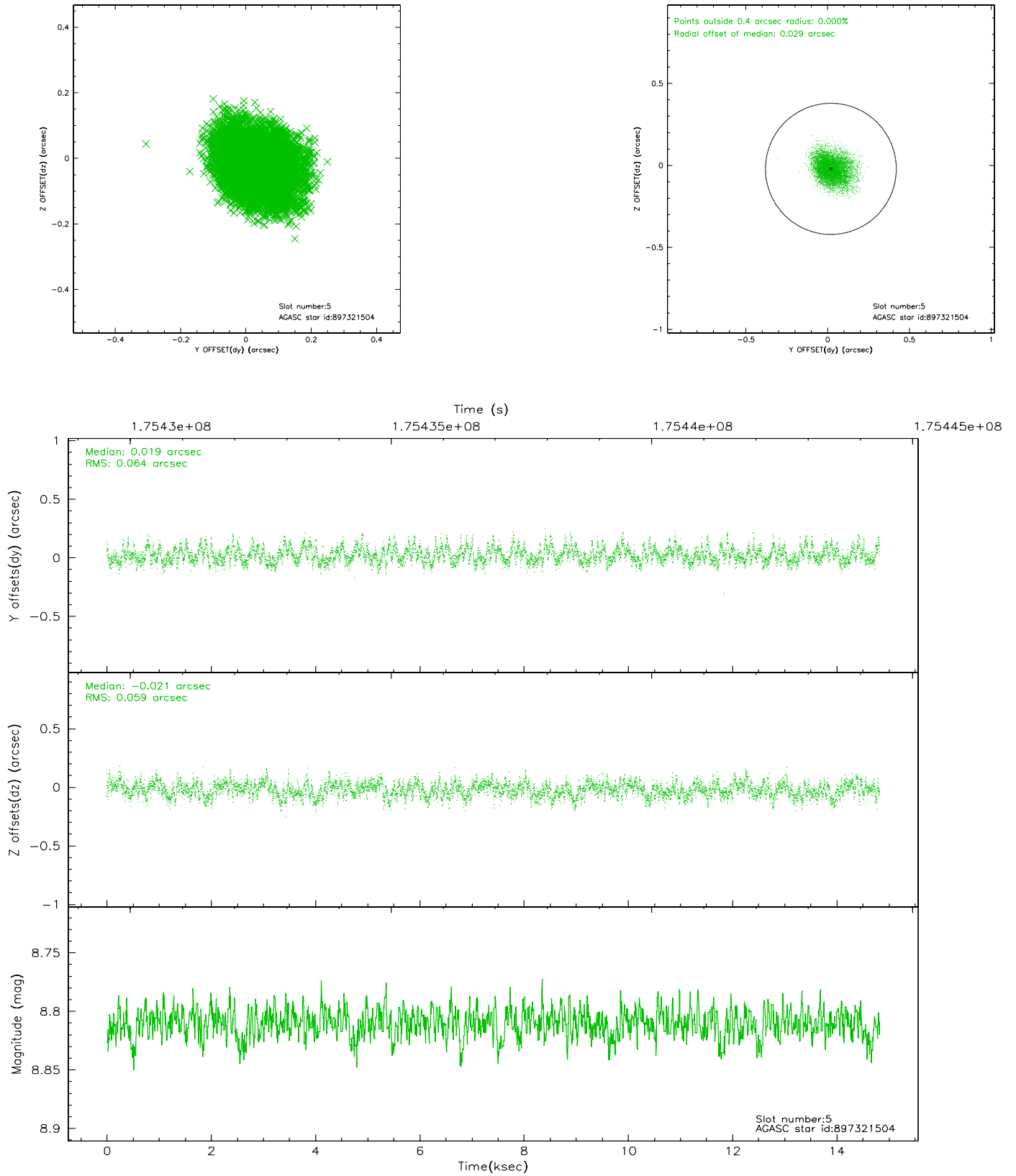
2.4.1 Slot 3



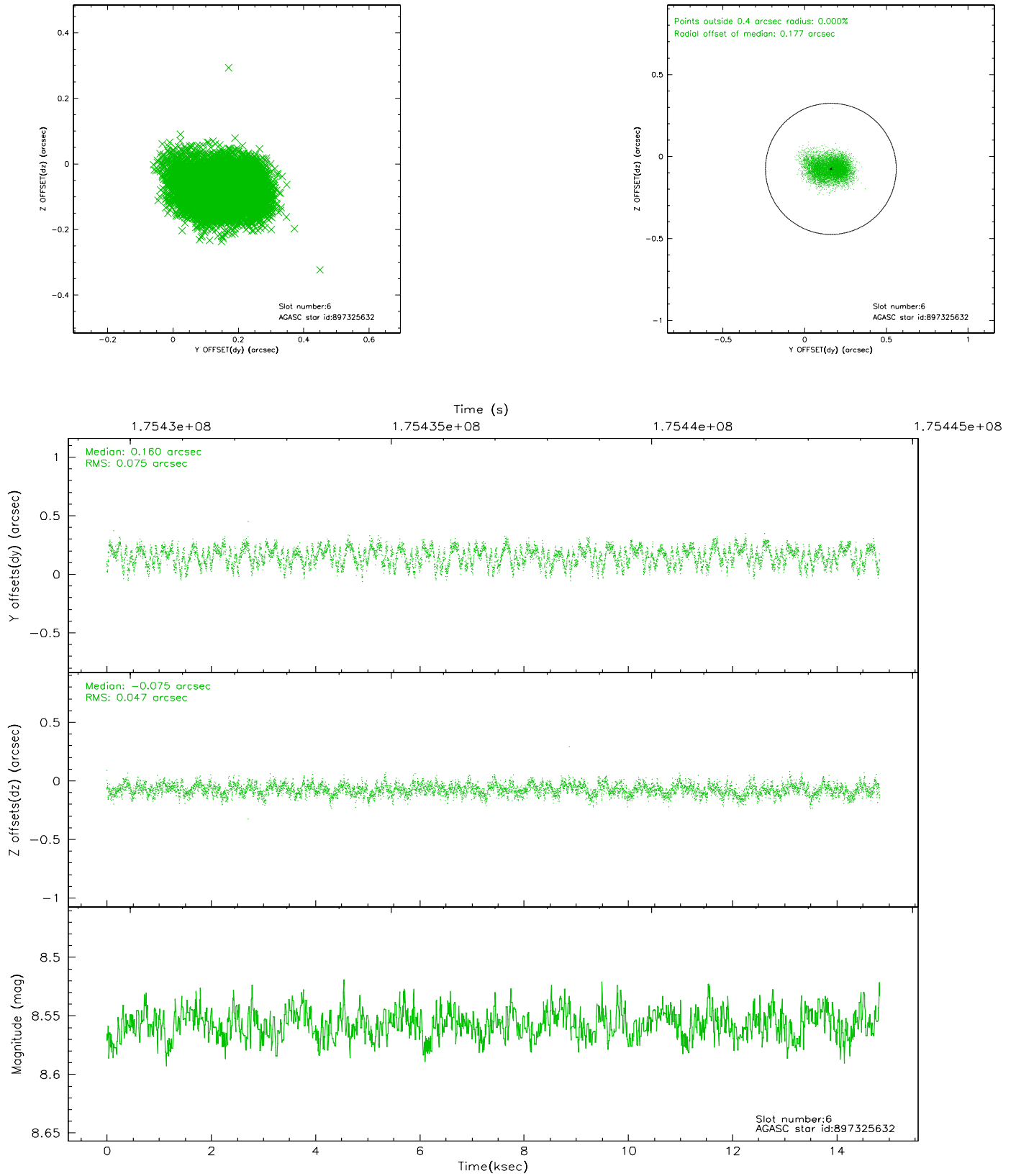
2.4.2 Slot 4



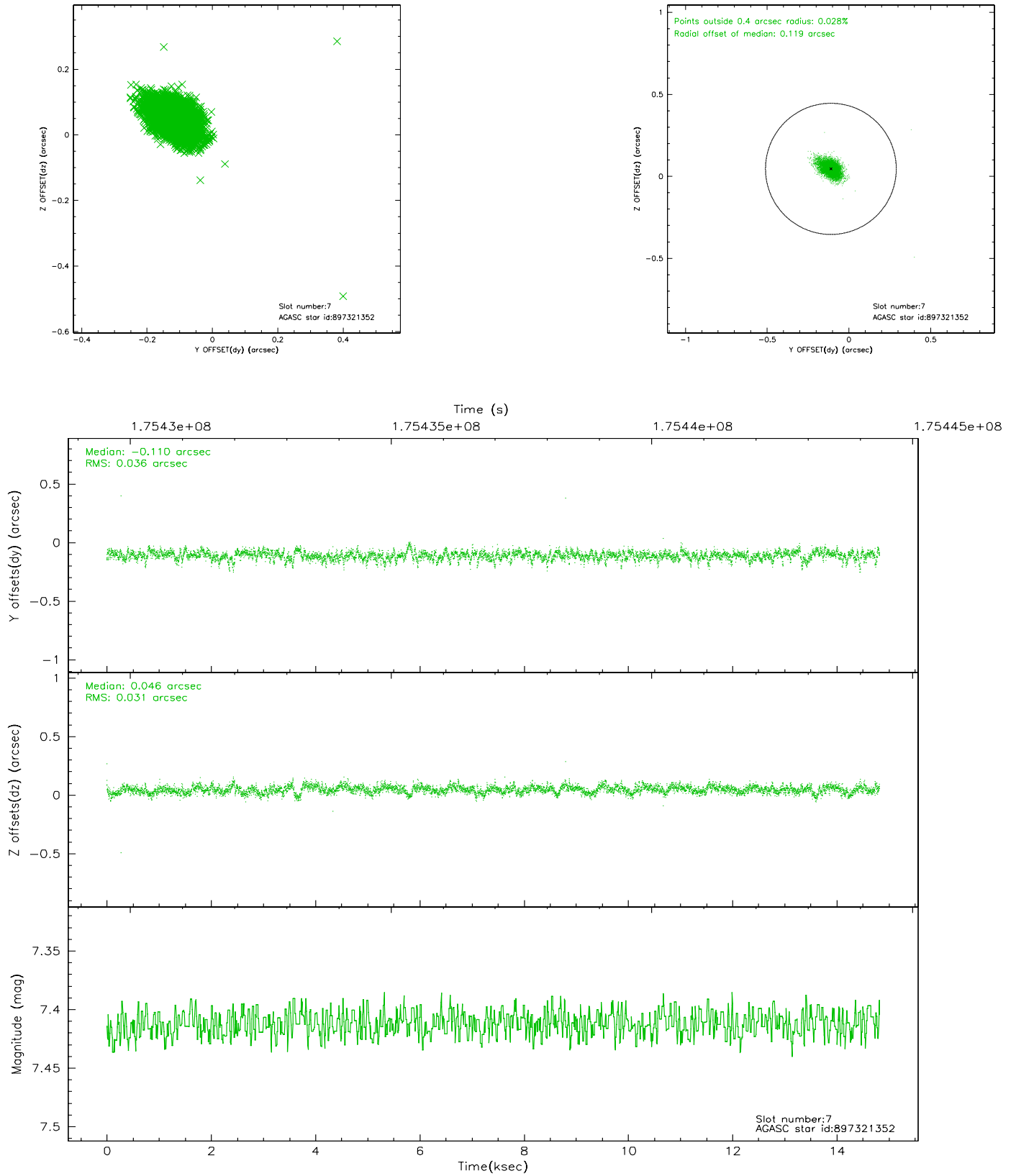
2.4.3 Slot 5



2.4.4 Slot 6

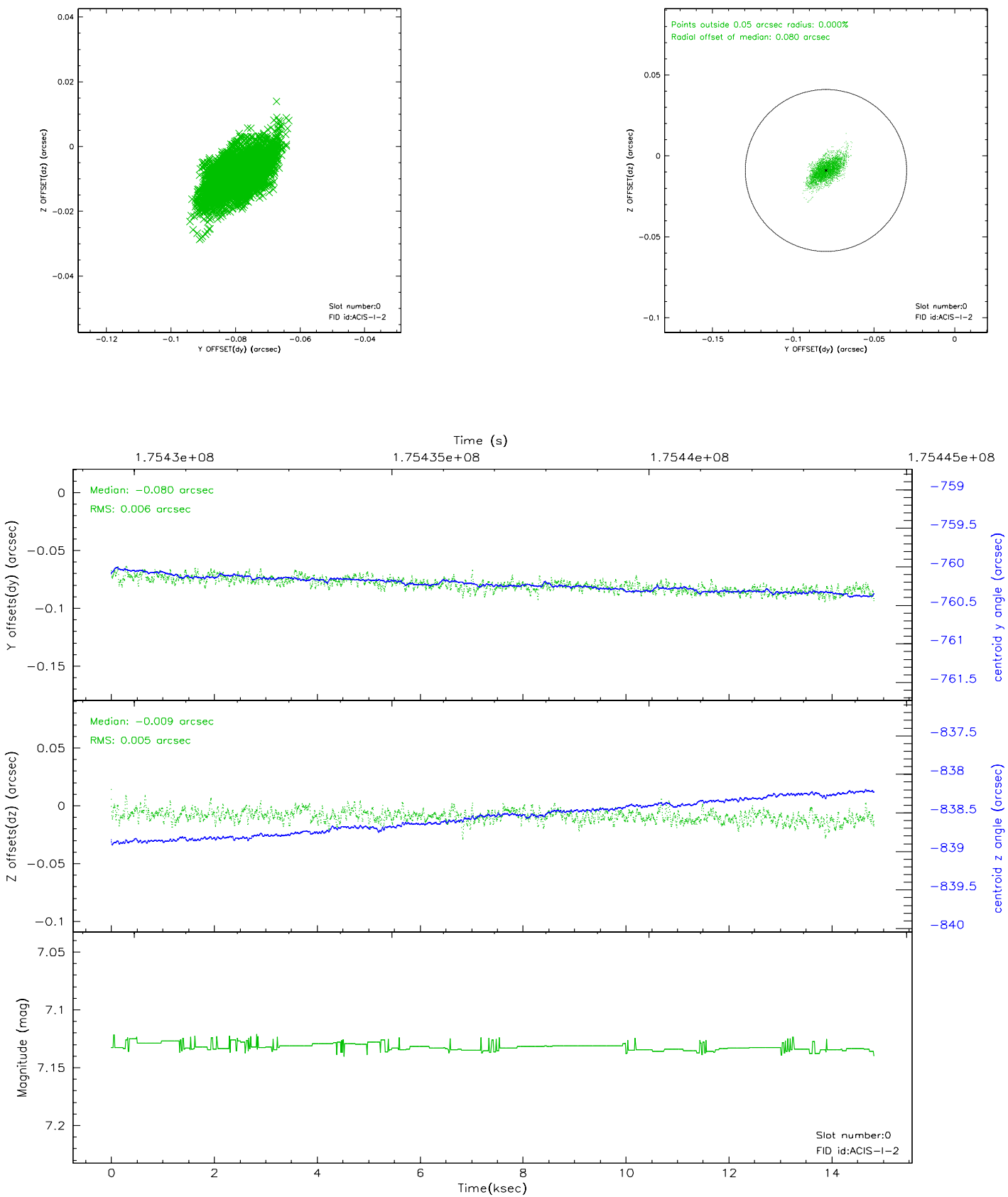


2.4.5 Slot 7

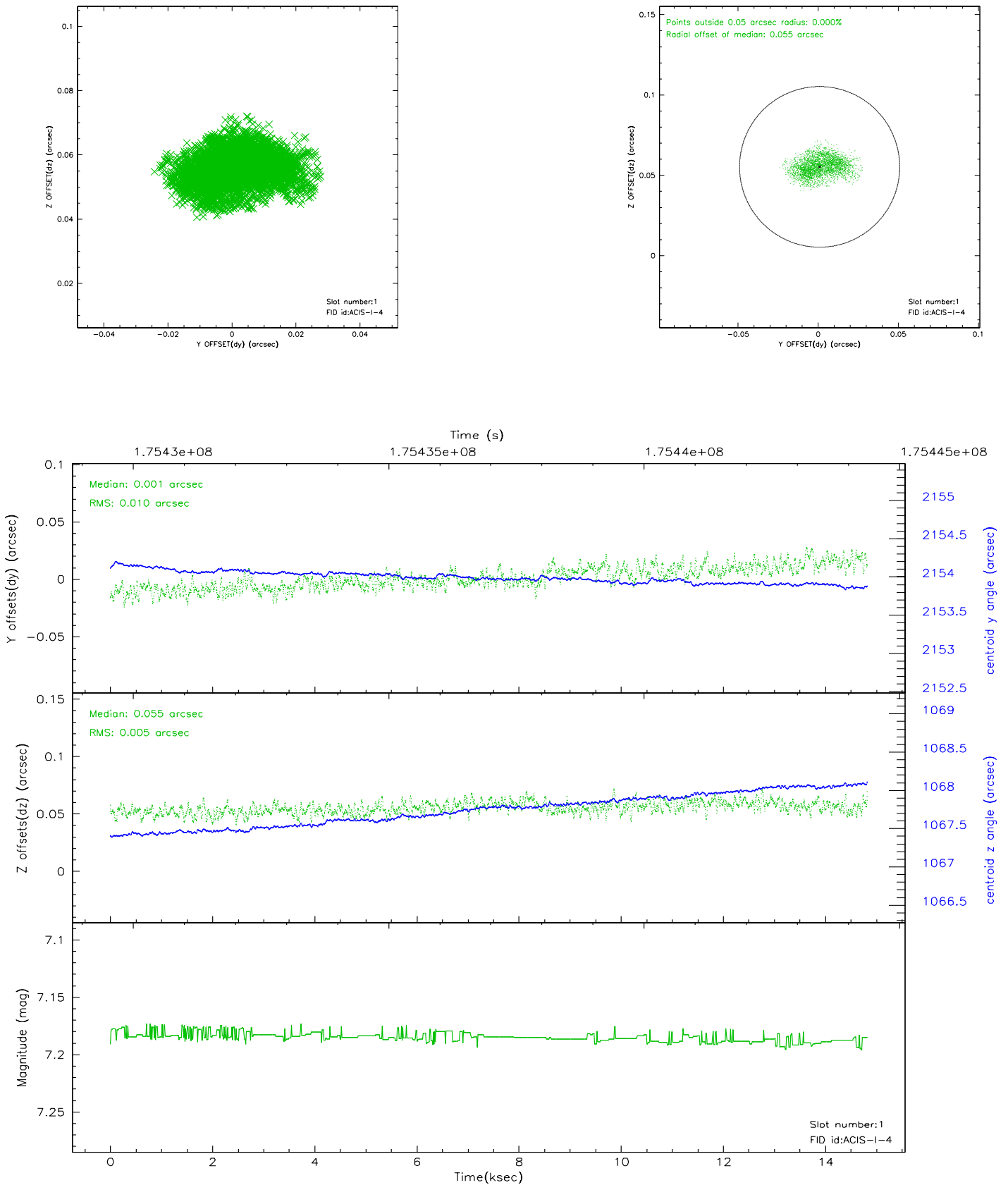


2.5 FID Slots

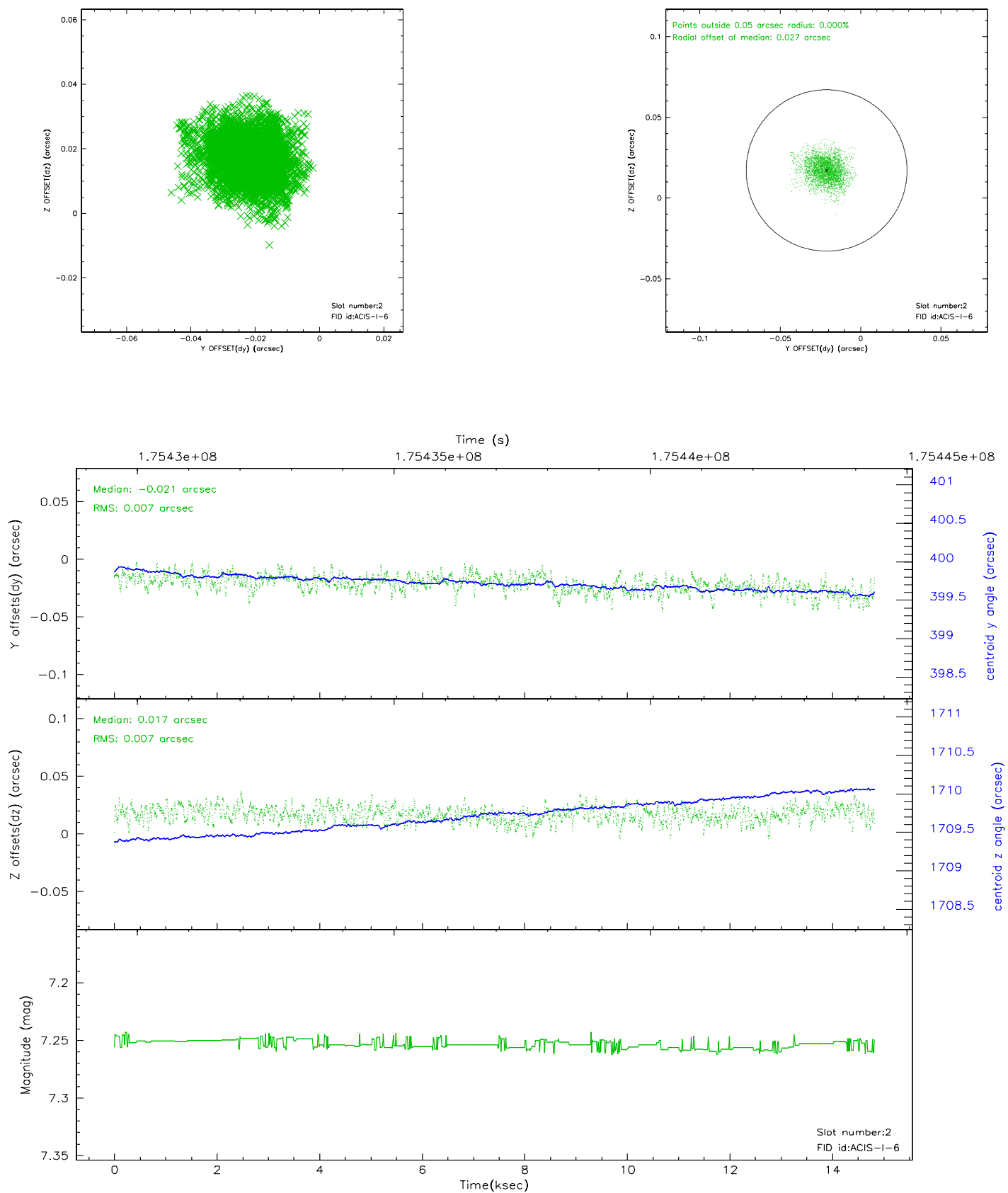
2.5.1 Slot 0



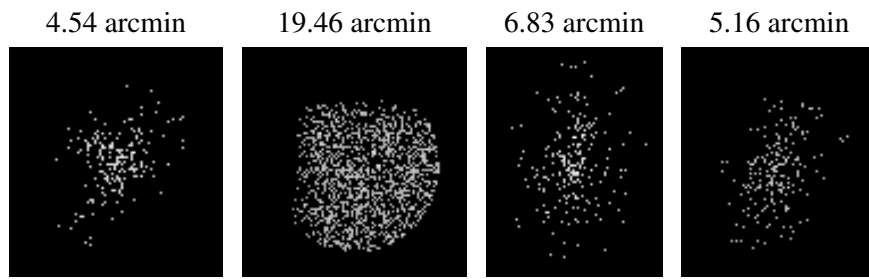
2.5.2 Slot 1



2.5.3 Slot 2



3 Point Sources



A Summary

A.1 Status

V&V Scientist	Jen Lauer
V&V Date (YYYY-MM-DD)	2006.07.12
V&V Edition	1
V&V Disposition and Status	OK
V&V Charge Time	14.822

A.2 Comments