

V&V Reference Report

L2 ASCDS Version : 7.6.8.1

Observation 3765 - L2 Version 001
Chandra X-Ray Center

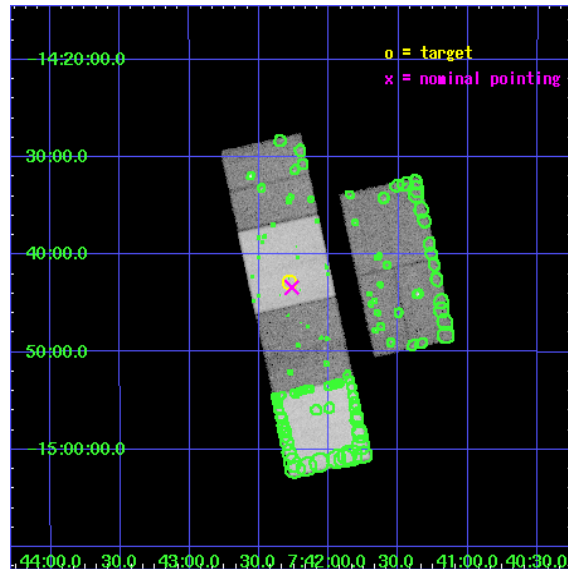
L2 Processing Date : Aug 5 2006

Contents

1	Front	2
2	OBI	3
2.1	OBI	3
2.1.1	Images	3
2.1.2	Bias	3
2.1.3	Parameters	4
2.1.4	Events	4
2.2	Compared Parameters	5
2.3	Aspect	6
2.4	Star Slots	9
2.4.1	Slot 3	9
2.4.2	Slot 4	10
2.4.3	Slot 5	11
2.4.4	Slot 6	12
2.4.5	Slot 7	13
2.5	FID Slots	14
2.5.1	Slot 0	14
2.5.2	Slot 1	15
2.5.3	Slot 2	16
3	Point Sources	17
A	Summary	18
A.1	Status	18
A.2	Comments	18

1 Front

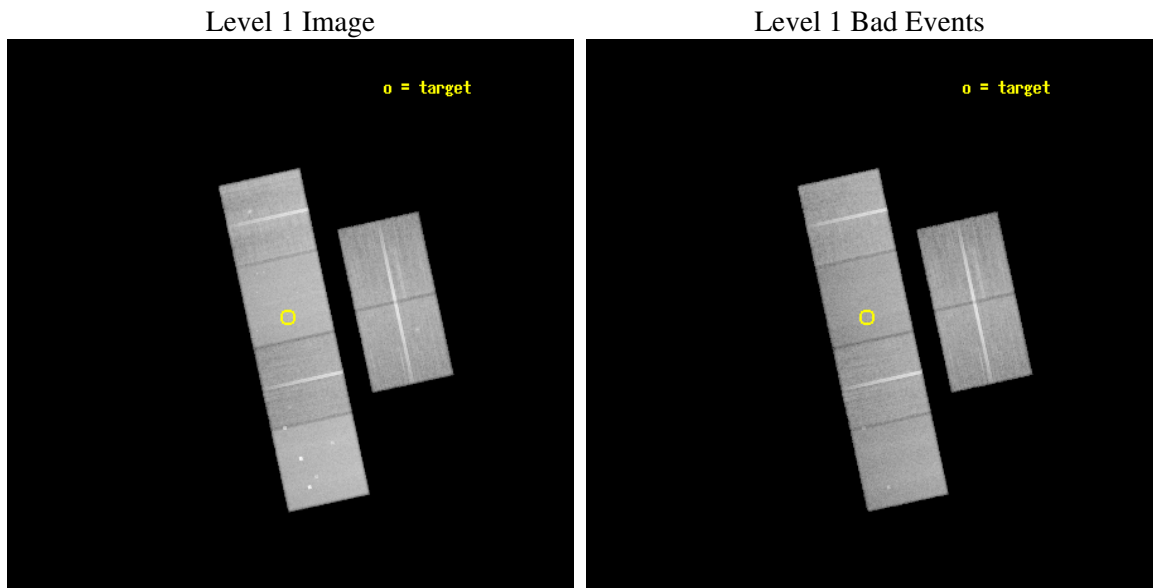
seq_num	200235
obs_id	3765
title	INVESTIGATING COLLIDING WINDS AND MAGNETISED STARS IN PRE-PLANETARY NEBULAE
observer	Dr. Raghvendra Sahai
object	OH231.8+4.2
dtcycle	0
cycle	P
ra_targ	115.57
dec_targ	-14.714444
ra_nom	115.56619039358
dec_nom	-14.72336295163
roll_nom	257.6826369247
revision	2
ontime	49753.599814653
lvertime	49123.589775779
ontime2	49753.599814653
ontime3	49750.358854383
ontime5	49753.599814653
ontime6	49753.599814653
ontime7	49753.599814653
ontime8	49750.358834386
l2events	478478



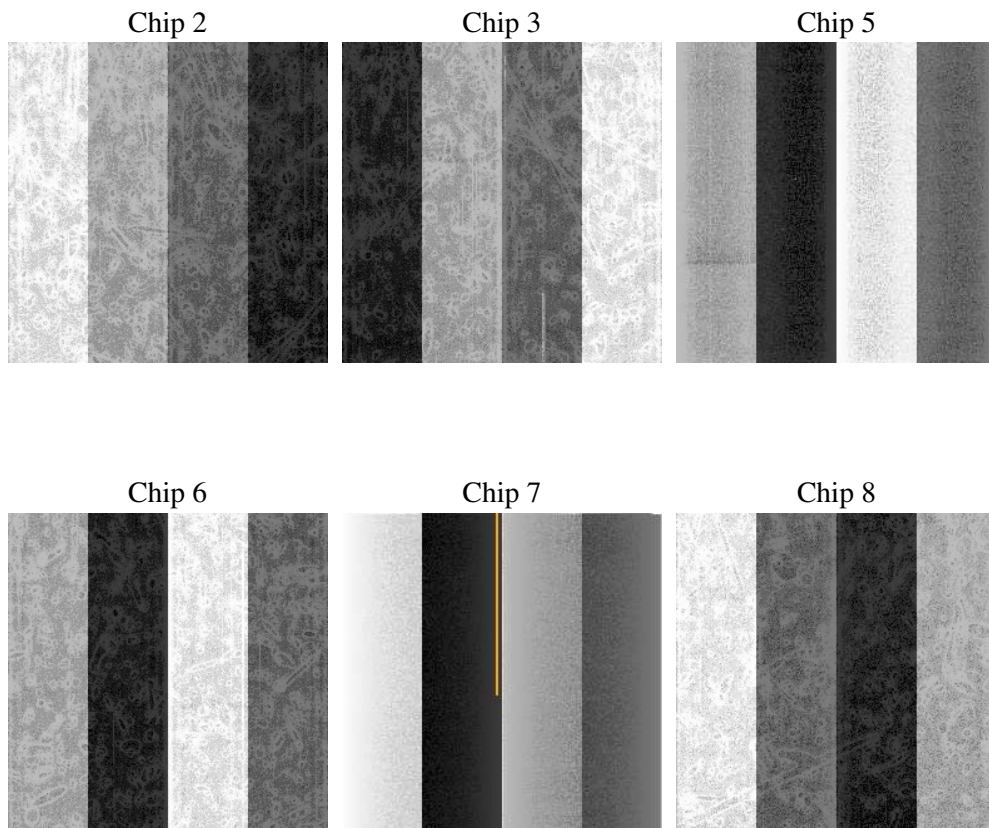
2 OBI

2.1 OBI

2.1.1 Images



2.1.2 Bias



2.1.3 Parameters

obi_num	2
ascdsver	7.6.8.1
caldsver	3.2.2
date	2006-08-05T02:39:58
revision	2

sched_exp_time	50000.000000
ontime	49759.091664642
ontime2	49759.091634691
ontime3	49755.850674421
ontime5	49759.091664642
ontime6	49759.091634691
ontime7	49759.091664642
ontime8	49755.850604713
l1events	2182395

2.1.4 Events

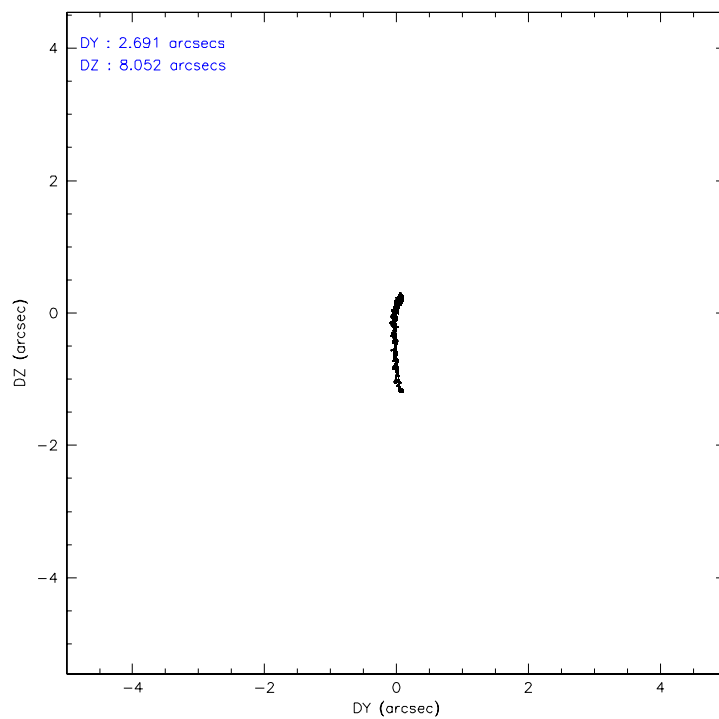
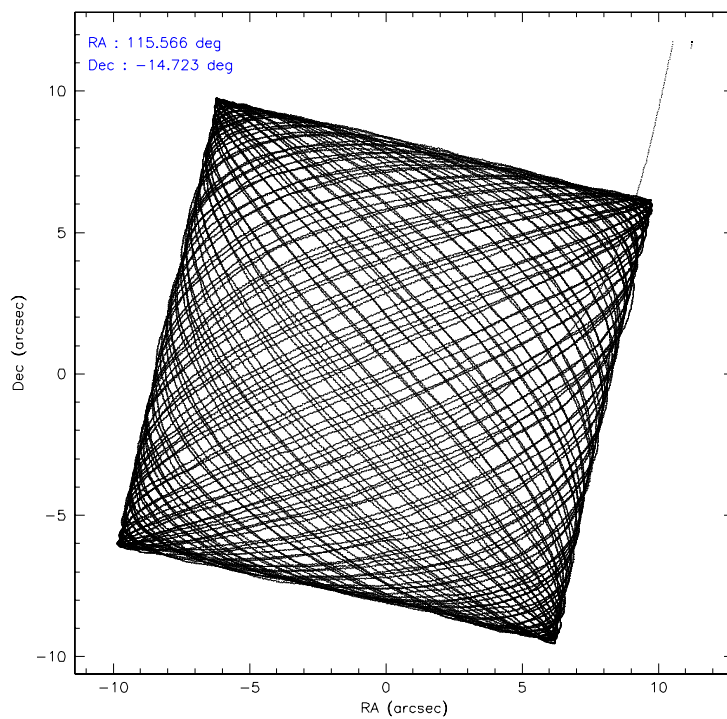
	ccd 2	ccd 3	ccd 5	ccd 6	ccd 7	ccd 8
level 1 events	317329	297547	453509	308794	412038	393178
rejected events	278518	261783	252459	271071	253809	310055
rejected %	87%	87%	55%	87%	61%	78%

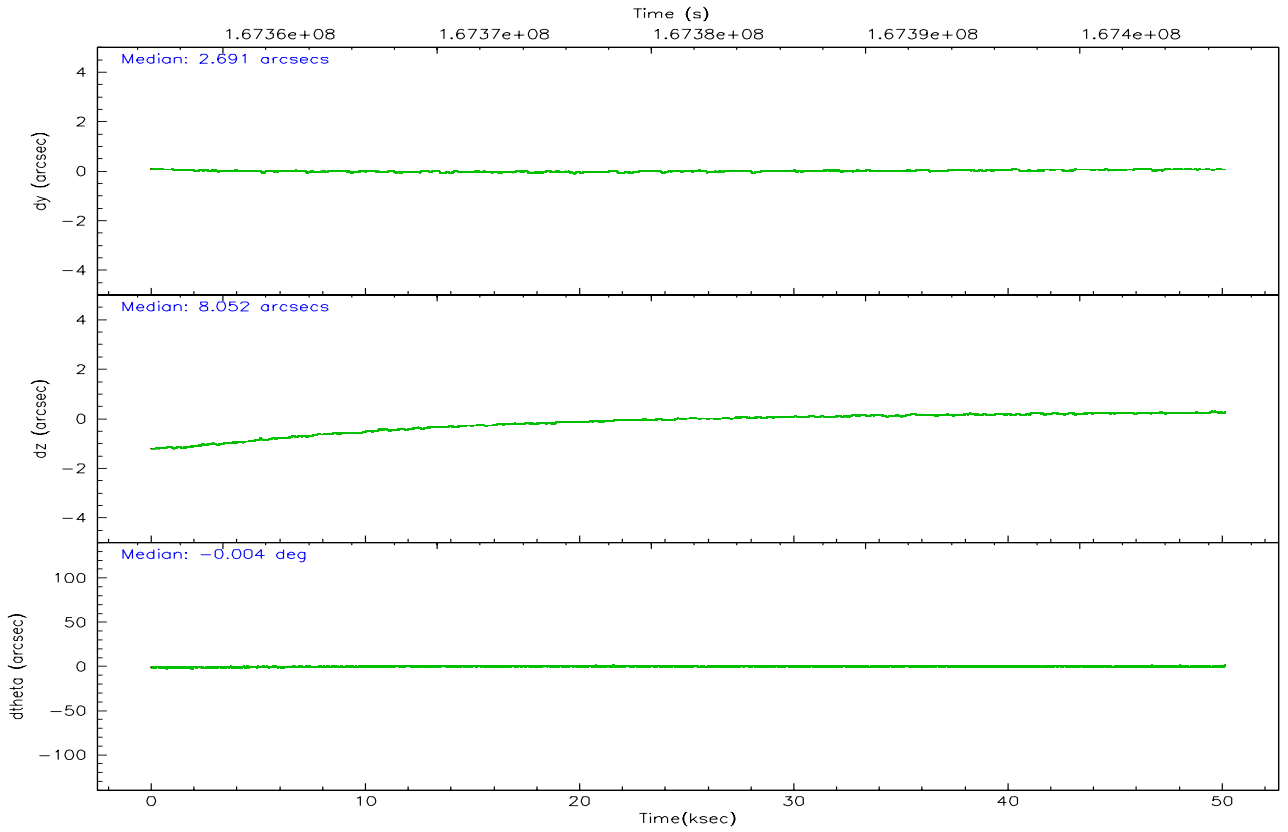
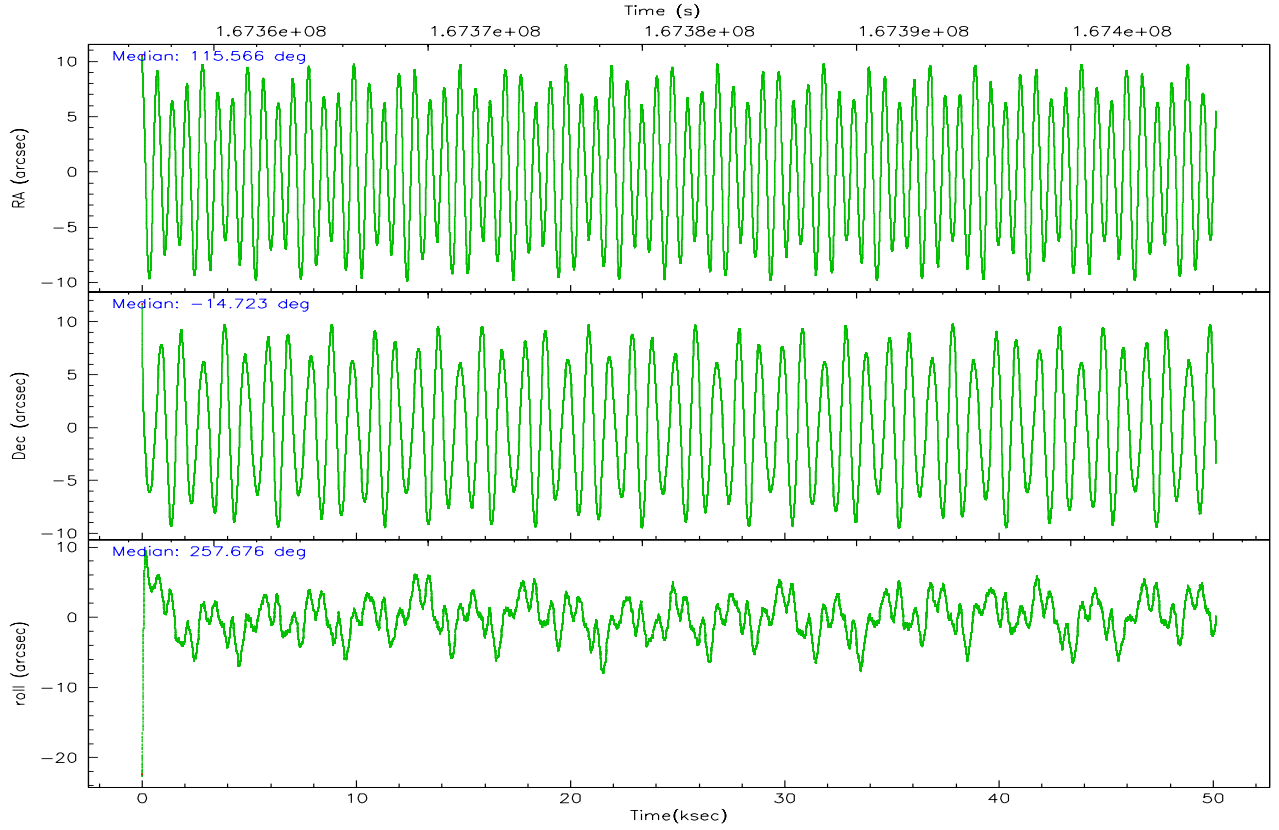
	ccd 2	ccd 3	ccd 5	ccd 6	ccd 7	ccd 8
grade 0 events	18139	16023	16477	15701	9351	27036
	5%	5%	3%	5%	2%	6%
grade 1 events	179	157	987	148	263	265
	0%	0%	0%	0%	0%	0%
grade 2 events	7566	6639	60893	7589	39167	17687
	2%	2%	13%	2%	9%	4%
grade 3 events	3556	3567	4611	3565	8089	8868
	1%	1%	1%	1%	1%	2%
grade 4 events	3534	3541	4418	3493	8049	8176
	1%	1%	0%	1%	1%	2%
grade 5 events	12098	13023	22152	13833	27155	17941
	3%	4%	4%	4%	6%	4%
grade 6 events	6018	5996	114661	7376	93598	21358
	1%	2%	25%	2%	22%	5%
grade 7 events	266239	248601	229310	257089	226366	291847
	83%	83%	50%	83%	54%	74%

2.2 Compared Parameters

Parameter	Planned	Actual	Parameter	Planned	Actual
Instrument	ACIS	ACIS	Obspar format version number	6	6
Detector	ACIS-235678	ACIS-235678	Obspar file type	PREDICTED	ACTUAL
Grating	NONE	NONE	Obspar update status	NONE	UPDATED
Data mode	FAINT	FAINT	On-chip summing requested	N	N
Observation mode	POINTING	POINTING	Subarray requested	NONE	NONE
Pointing RA	115.557279	115.566190393581	Alternating exposures requested	N	N
Pointing Dec	-14.697549	-14.72336295163046	Primary exposure time	0.000000	3.2
Pointing Roll	257.523755	257.6826369247014			
SIM focus pos (mm)	-0.684267	-0.6828225247311905			
SIM defocus (mm)	0	0.001444936568705701			
SIM translation stage pos (mm)	-190.132523	-190.145094680475			
SIM translation stage offset (mm)	0	0.01257209746719923			
Observation start time	167356783.184000	167355783.43293			
Observation start date	2003-04-21T23:58:39	2003-04-21T23:43:03			
Observation end time	167406783.184000	167407294.29761			
Observation end date	2003-04-22T13:51:59	2003-04-22T14:01:34			
Read mode	TIMED	TIMED			

2.3 Aspect



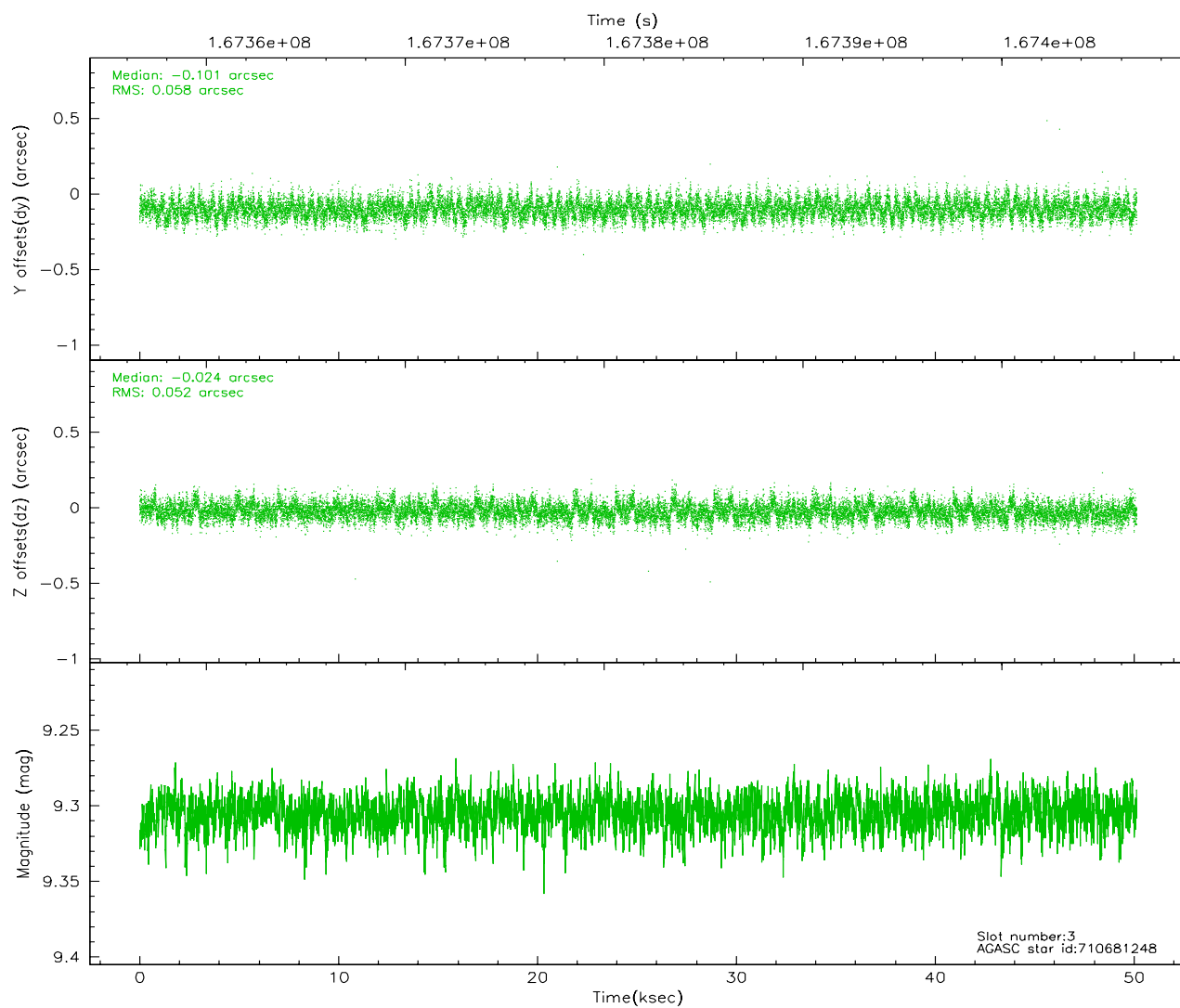
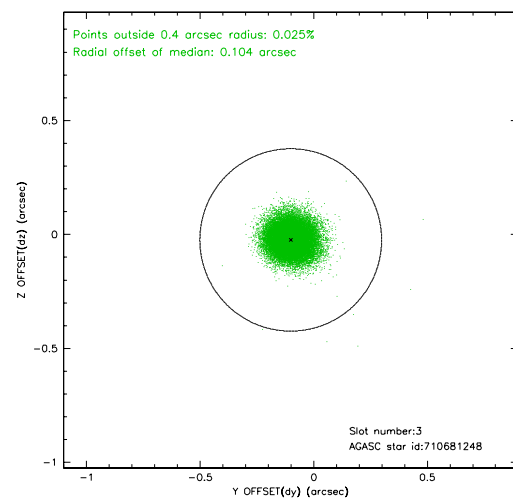
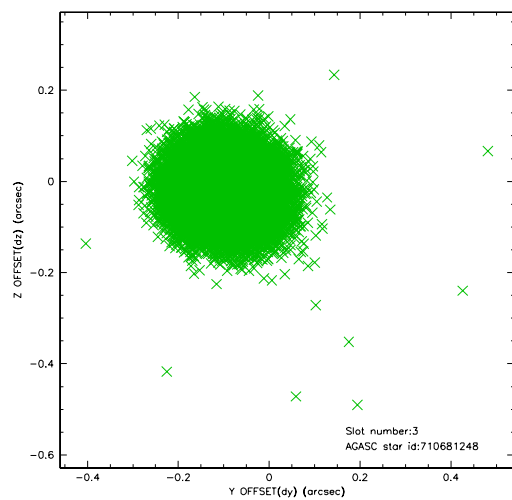


Slot Statistics

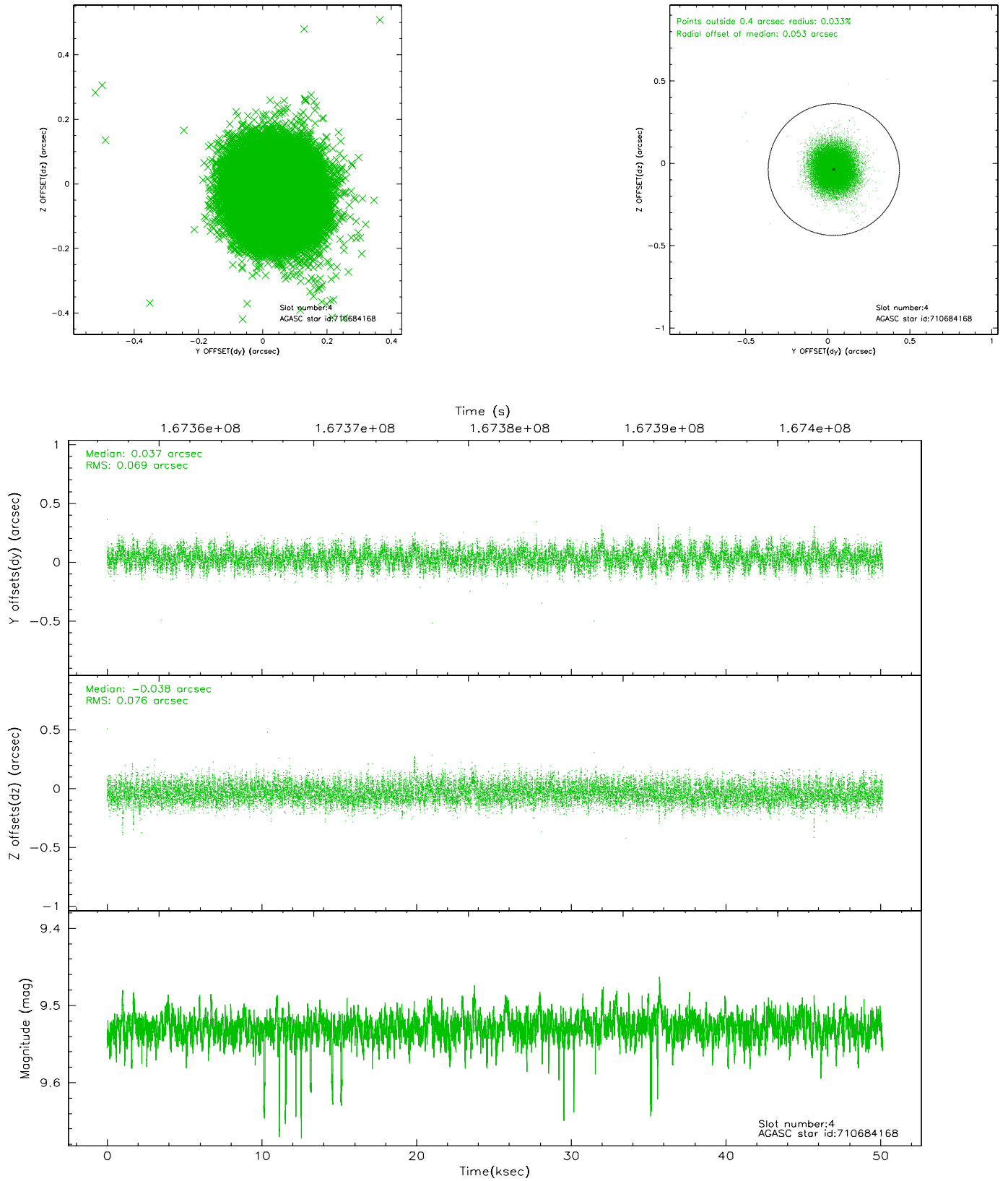
slot	status	id	mag	n_pts	med_dy	med_dz	dr1	dr2	ra	dec	mean_y	mean_z
0	FID	ACIS-S-2	7.11	12233	0.004	0.028	0.007	0.020	0.000000	0.000000	-755.32	-1728.95
1	FID	ACIS-S-4	7.20	12232	-0.021	0.007	0.007	0.011	0.000000	0.000000	2157.93	179.54
2	FID	ACIS-S-6	7.36	12232	-0.011	-0.029	0.010	0.022	0.000000	0.000000	406.61	816.87
3	GUIDE	710681248	9.31	24446	-0.101	-0.024	0.083	0.134	115.794246	-14.168303	-2038.47	396.23
4	GUIDE	710684168	9.53	24427	0.037	-0.038	0.109	0.173	114.936190	-14.629822	232.68	-2163.98
5	GUIDE	710695992	9.05	24462	-0.076	-0.071	0.120	0.191	114.965693	-14.229875	-1194.87	-2378.74
6	GUIDE	710688872	9.40	24459	-0.078	0.091	0.146	0.243	116.341893	-14.338111	-1850.29	2393.72
7	GUIDE	783822152	9.20	24446	0.224	0.050	0.095	0.161	115.732887	-15.001686	937.82	833.32

2.4 Star Slots

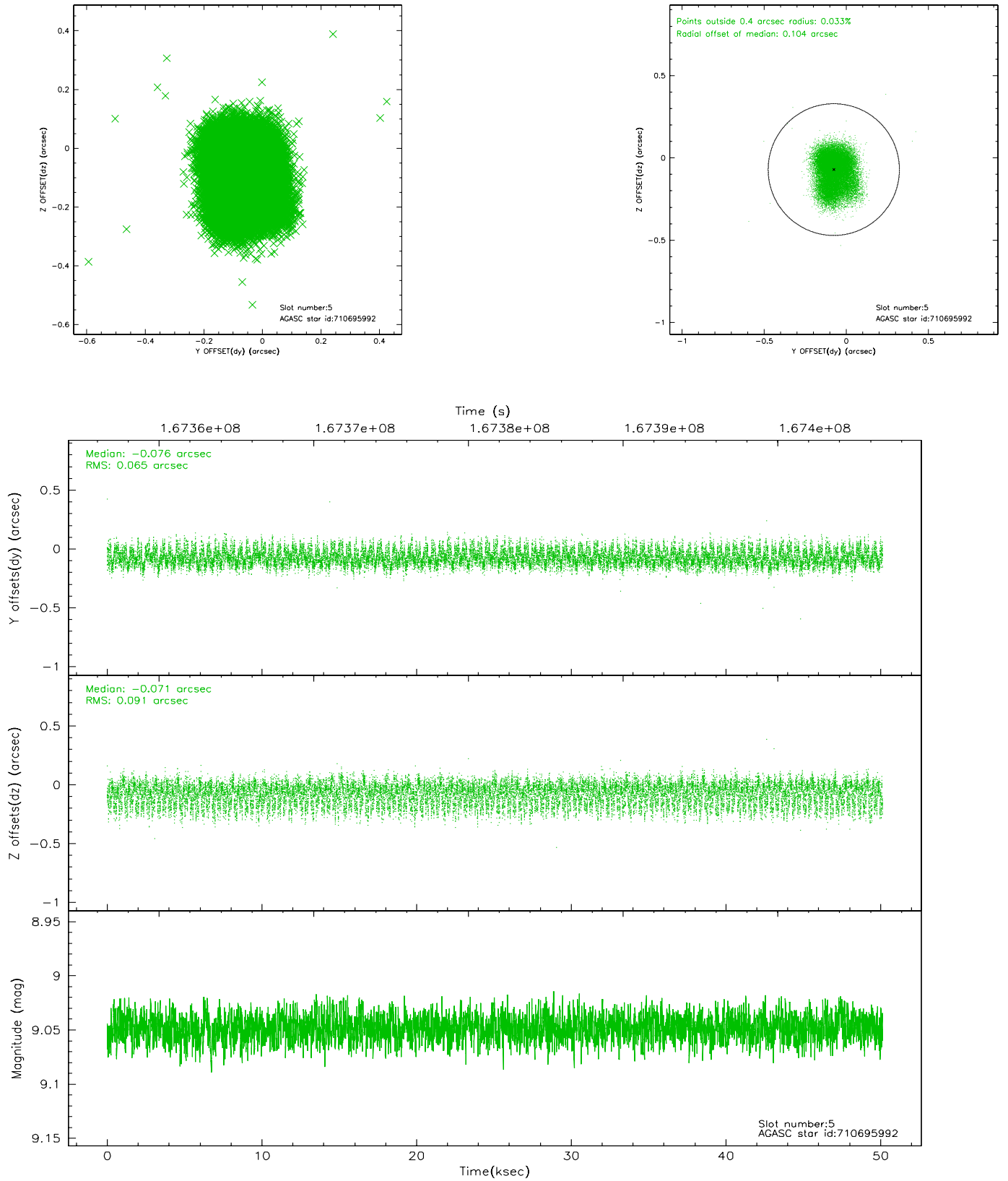
2.4.1 Slot 3



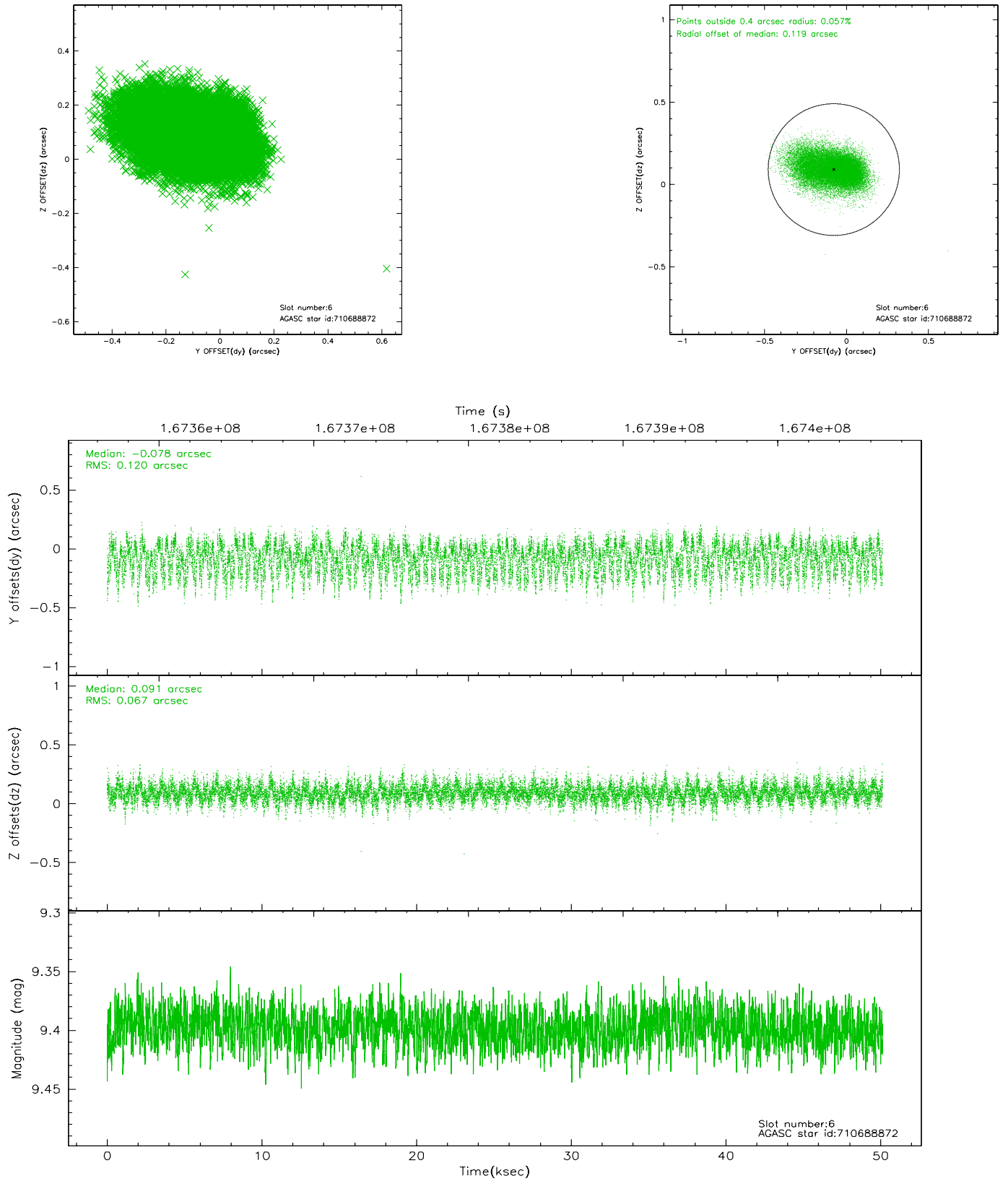
2.4.2 Slot 4



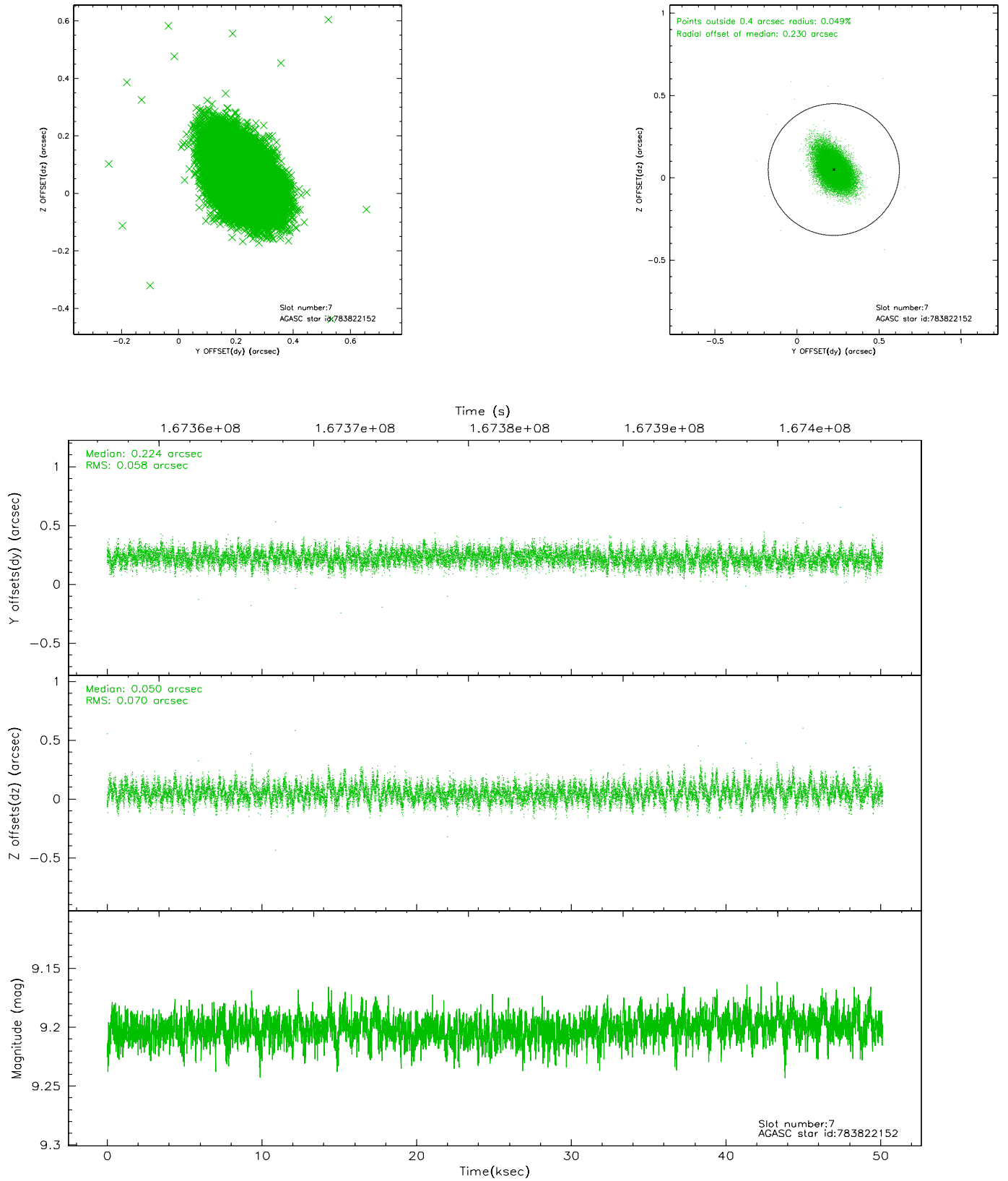
2.4.3 Slot 5



2.4.4 Slot 6

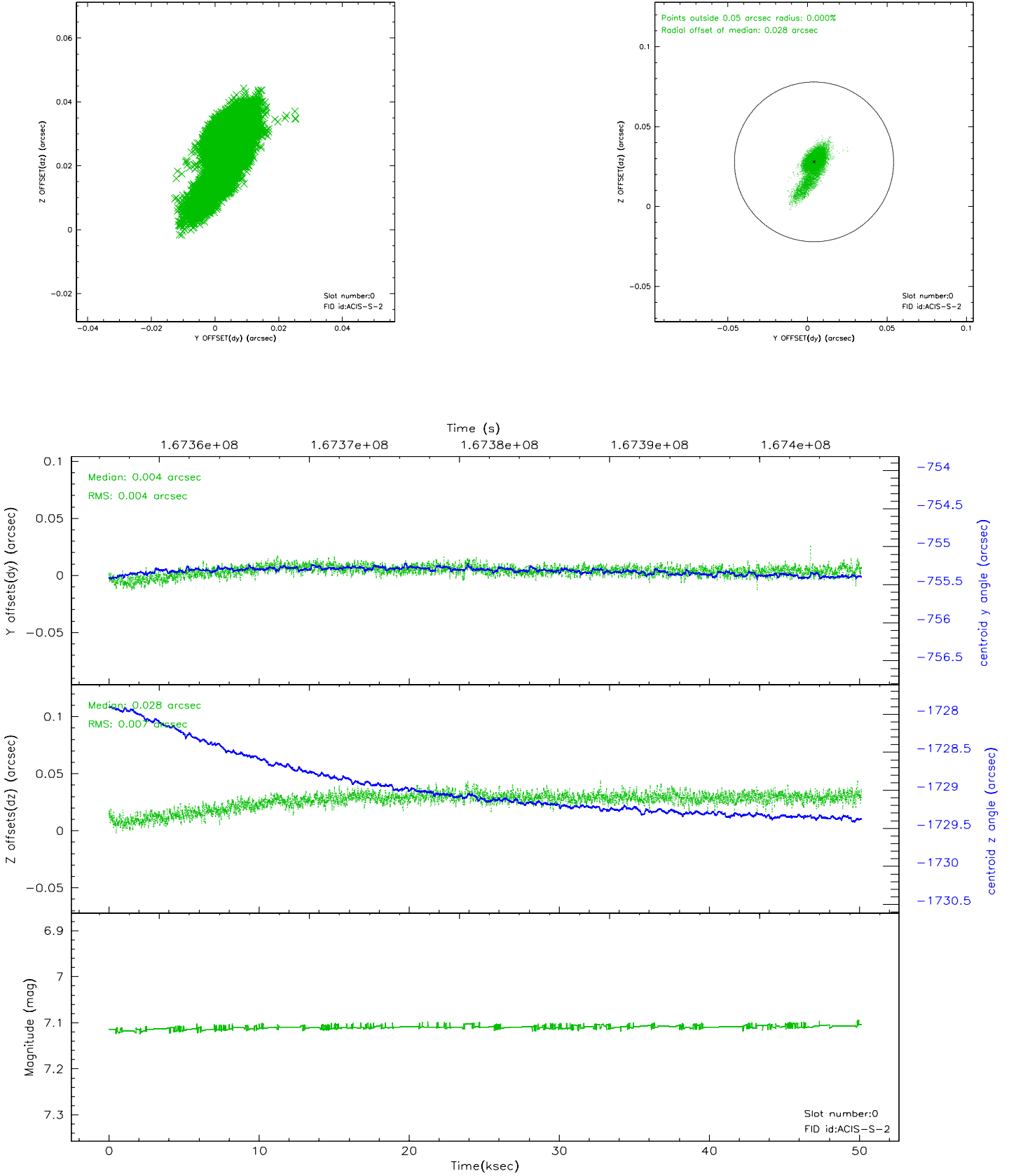


2.4.5 Slot 7

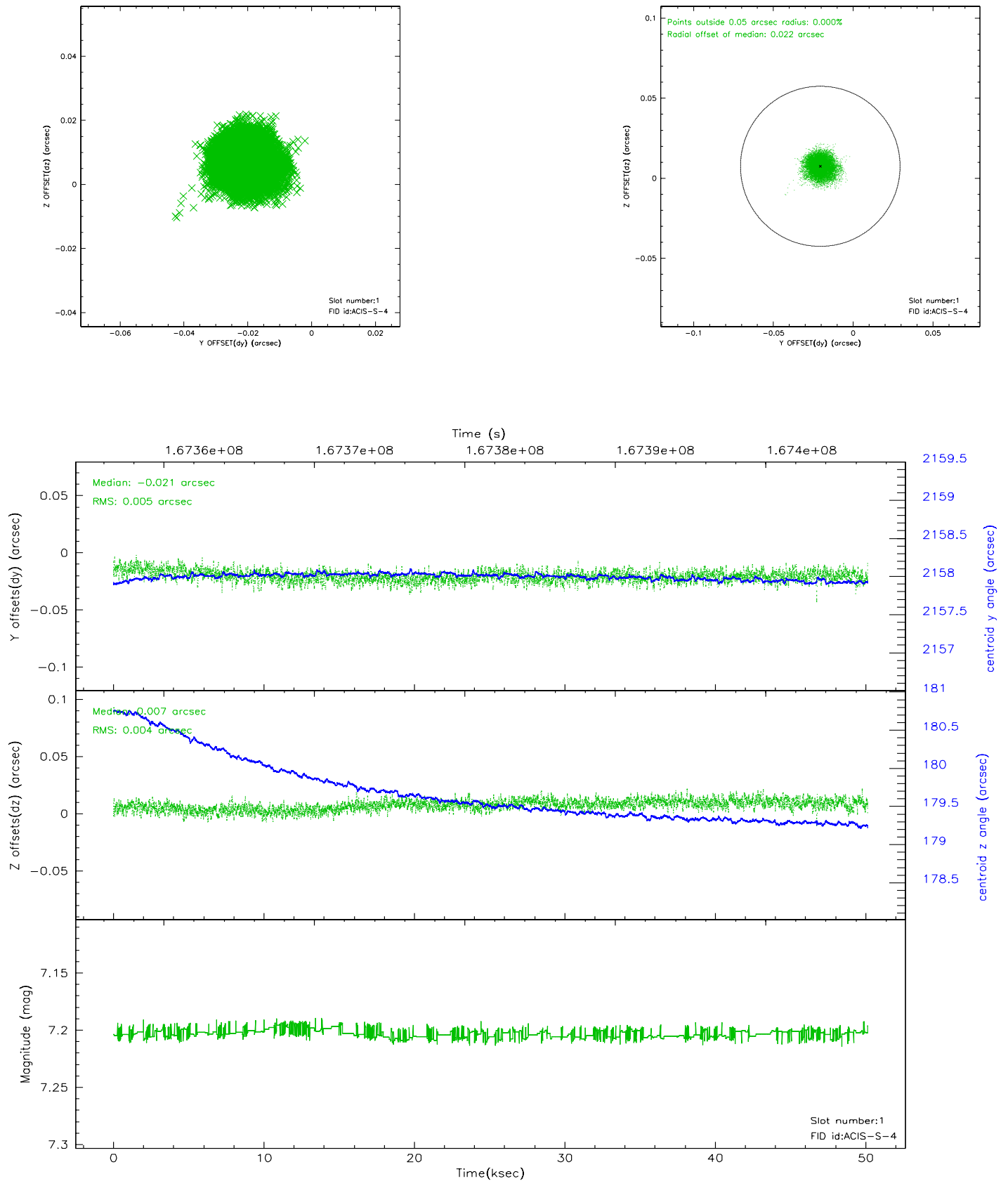


2.5 FID Slots

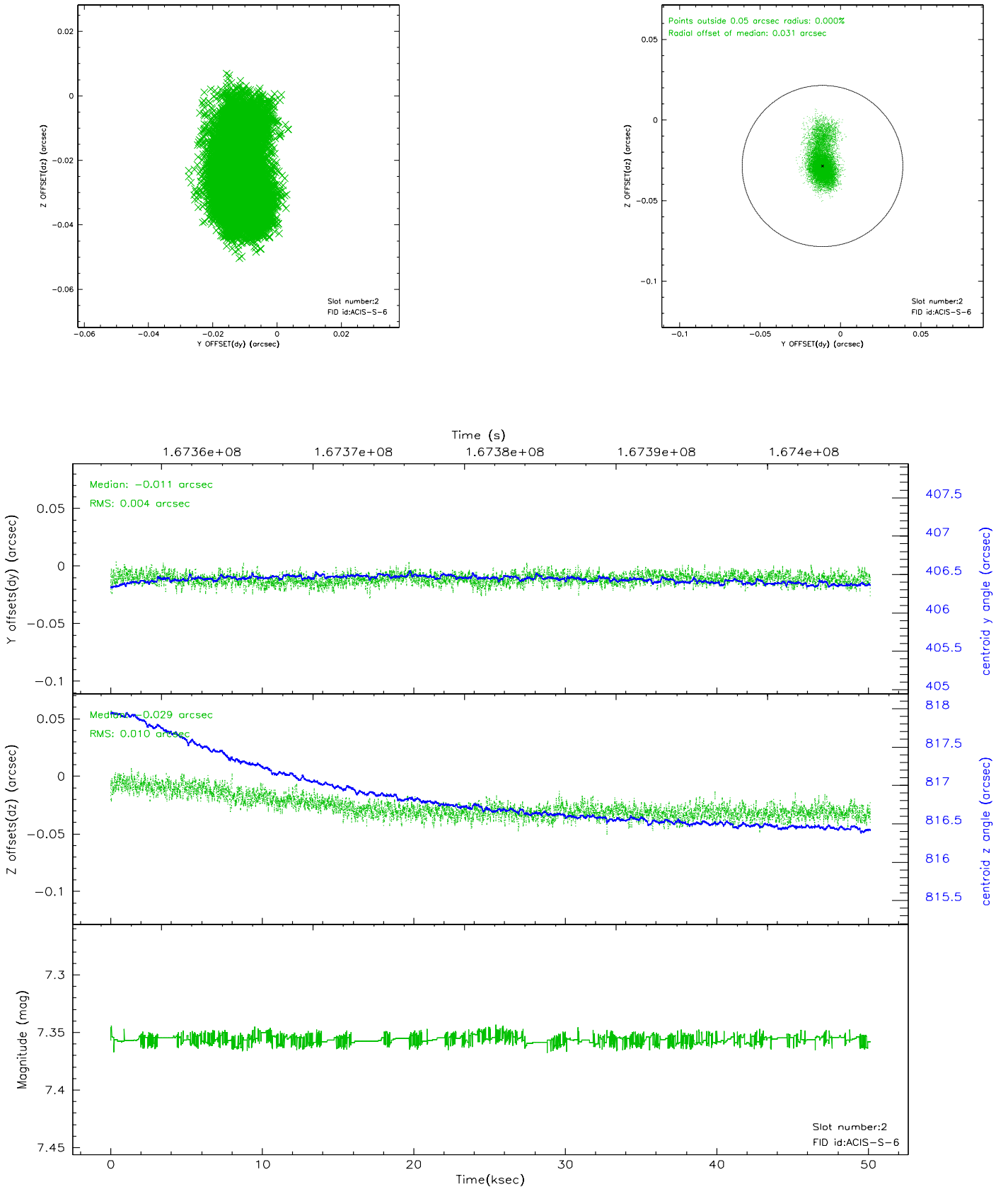
2.5.1 Slot 0



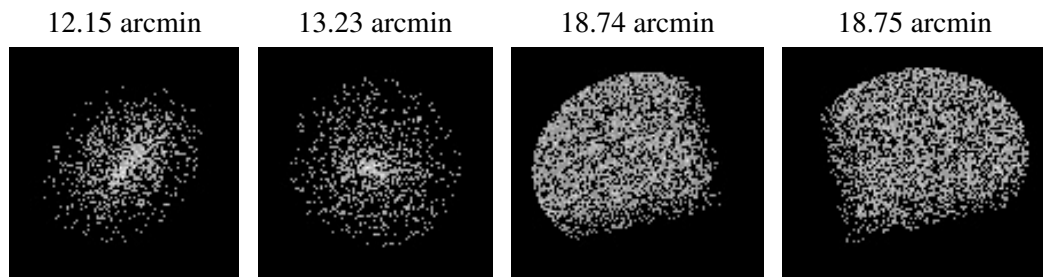
2.5.2 Slot 1



2.5.3 Slot 2



3 Point Sources



A Summary

A.1 Status

V&V Scientist	Beth Sundheim
V&V Date (YYYY-MM-DD)	2006.08.06
V&V Edition	1
V&V Disposition and Status	OK
V&V Charge Time	49.75

A.2 Comments