

# V&V Reference Report

## L2 ASCDS Version : 7.6.8

Observation 3757 - L2 Version 001  
Chandra X-Ray Center

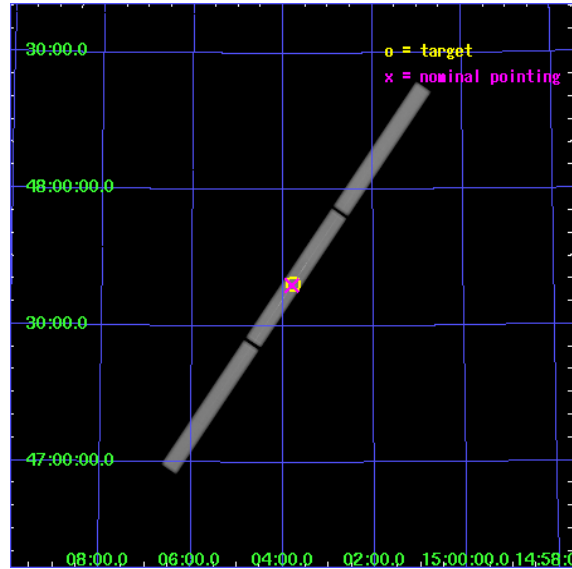
L2 Processing Date : Jul 4 2006

## Contents

<b>1</b>	<b>Front</b>	<b>2</b>
<b>2</b>	<b>OBI</b>	<b>3</b>
2.1	OBI . . . . .	3
2.1.1	Images . . . . .	3
2.1.2	Parameters . . . . .	4
2.1.3	Events . . . . .	4
2.2	Compared Parameters . . . . .	5
2.3	Aspect . . . . .	6
2.4	Star Slots . . . . .	9
2.4.1	Slot 3 . . . . .	9
2.4.2	Slot 4 . . . . .	10
2.4.3	Slot 5 . . . . .	11
2.4.4	Slot 6 . . . . .	12
2.4.5	Slot 7 . . . . .	13
2.5	FID Slots . . . . .	14
2.5.1	Slot 0 . . . . .	14
2.5.2	Slot 1 . . . . .	15
2.5.3	Slot 2 . . . . .	16
<b>3</b>	<b>Gratings</b>	<b>17</b>
3.1	LETG Arm . . . . .	17
<b>A</b>	<b>Summary</b>	<b>19</b>
A.1	Status . . . . .	19
A.2	Comments . . . . .	19

# 1 Front

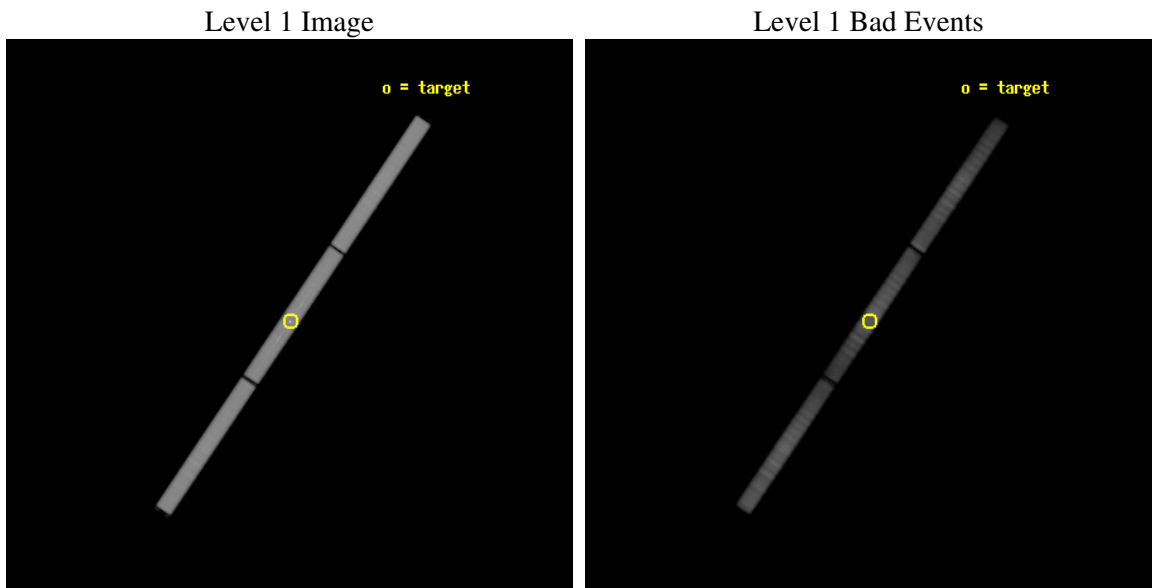
seq_num	200227
obs_id	3757
title	MAPPING MAGNETIC LOOPS IN THE CORONA OF 44I BOO
observer	Dr. Nancy Brickhouse
object	44I BOO
ra_targ	225.947083
dec_targ	47.654056
ra_nom	225.95078796288
dec_nom	47.650124540536
roll_nom	304.01173783619
revision	2
ontime	119330.50511938
livetime	118252.10023546
l2events	7499251



## 2 OBI

### 2.1 OBI

#### 2.1.1 Images



### 2.1.2 Parameters

obi_num	0
ascdsver	7.6.8
caldbver	3.2.2
date	2006-07-04T12:38:47
revision	2

sched_exp_time	119500.000000
ontime	119427.88012356
l1events	10094059

### 2.1.3 Events

Level 1 Events

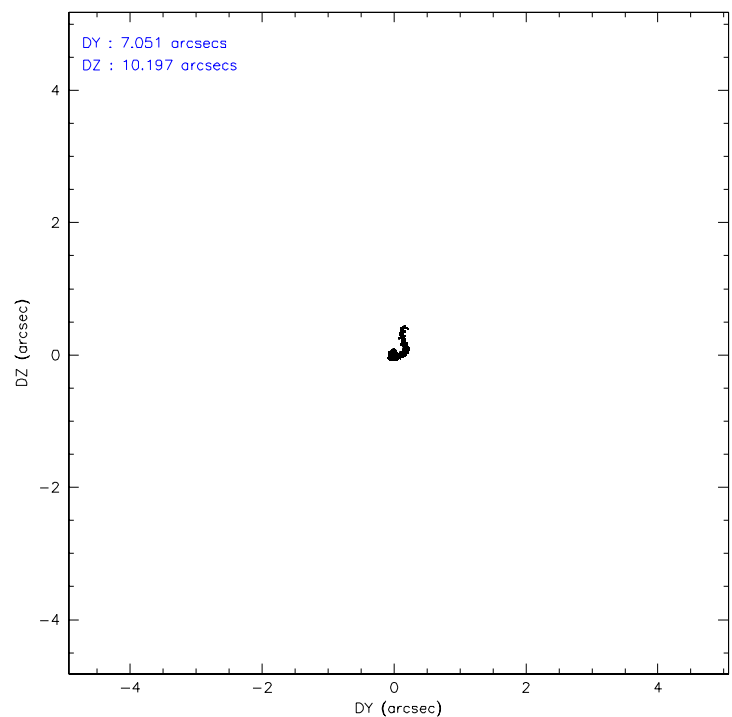
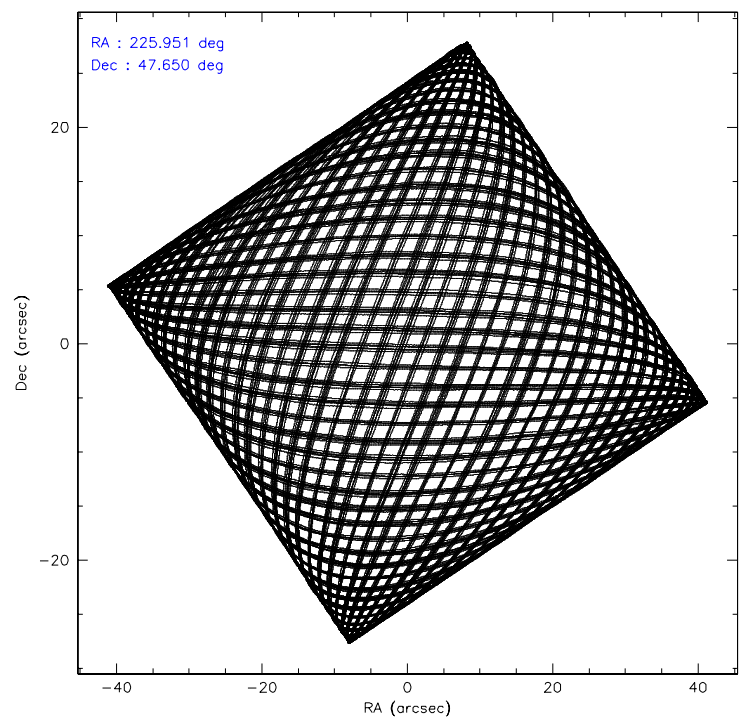
	<b>segment 1</b>	<b>segment 2</b>	<b>segment 3</b>
level 1 events	3468350	3359597	3266112
rejected events	534383	585761	668673
rejected %	15%	17%	20%

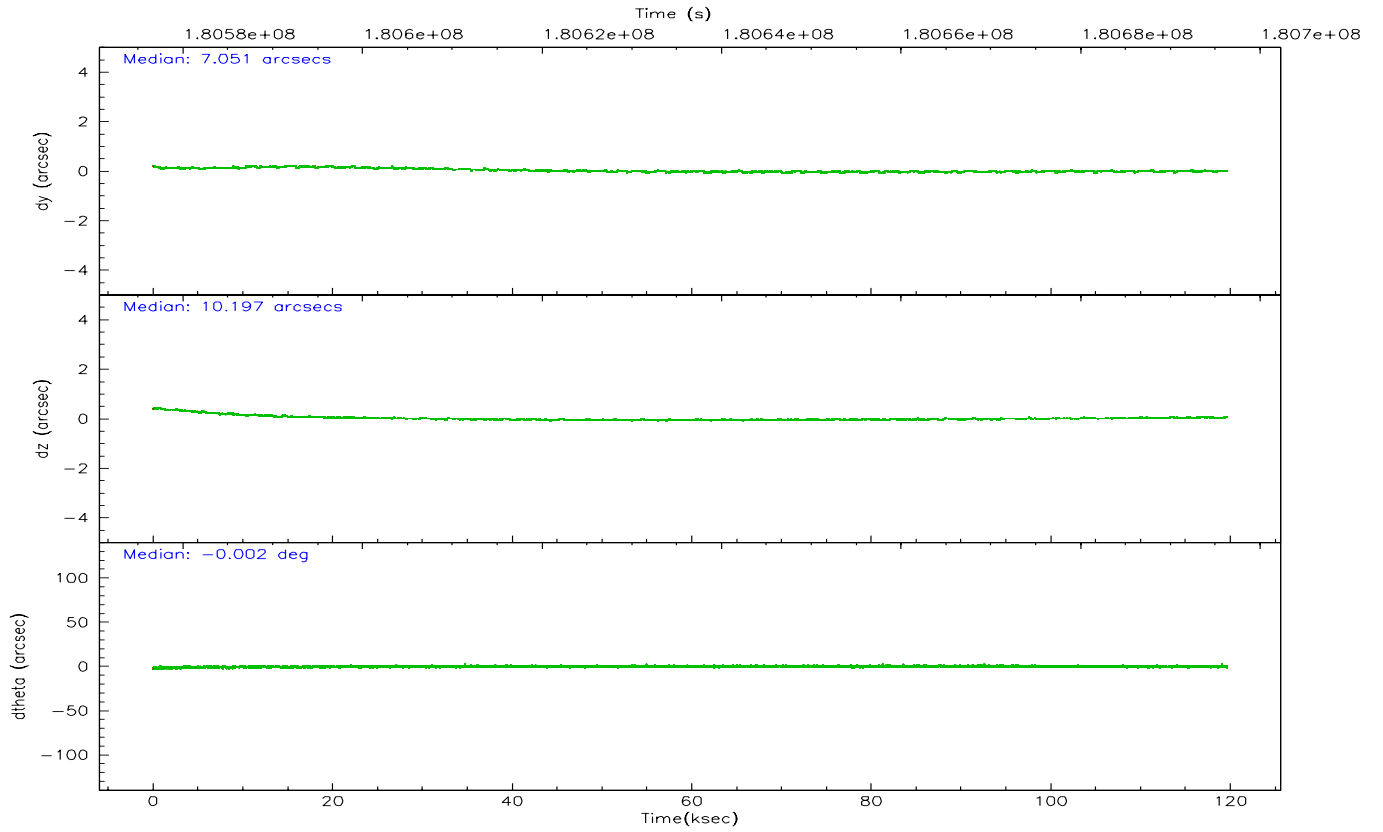
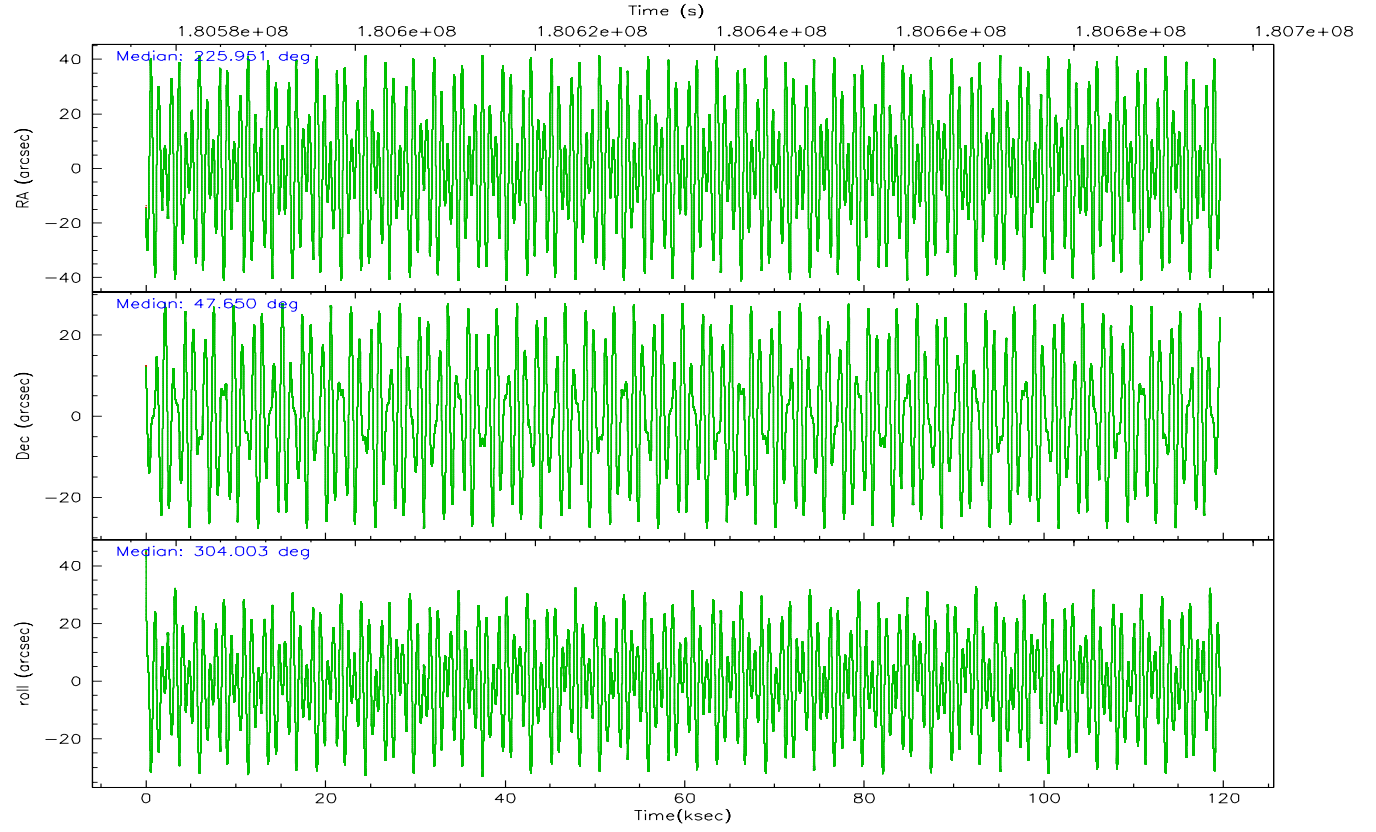


## 2.2 Compared Parameters

Parameter	Planned	Actual	Parameter	Planned	Actual
Instrument	HRC	HRC	Obspar format version number	6	6
Detector	HRC-S	HRC-S	Obspar file type	PREDICTED	ACTUAL
Grating	LETG	LETG	Obspar update status	NONE	UPDATED
Data mode	OBSERVING	OBSERVING			
Observation mode	POINTING	POINTING			
Pointing RA	225.911754	225.9507879628823			
Pointing Dec	47.661345	47.650124540536			
Pointing Roll	303.973247	304.0117378361891			
SIM focus pos (mm)	-1.429586	-1.428180813131781			
SIM defocus (mm)	0.1037507710433287	0.1051558262725154			
SIM translation stage pos (mm)	250.455976	250.4635187648994			
SIM translation stage offset (mm)	0	-0.007540371344731511			
Observation start time	180576829.184000	180576159.68327			
Observation start date	2003-09-22T00:12:45	2003-09-22T00:02:39			
Observation end time	180696329.184000	180696781.68844			
Observation end date	2003-09-23T09:24:25	2003-09-23T09:33:01			

## 2.3 Aspect



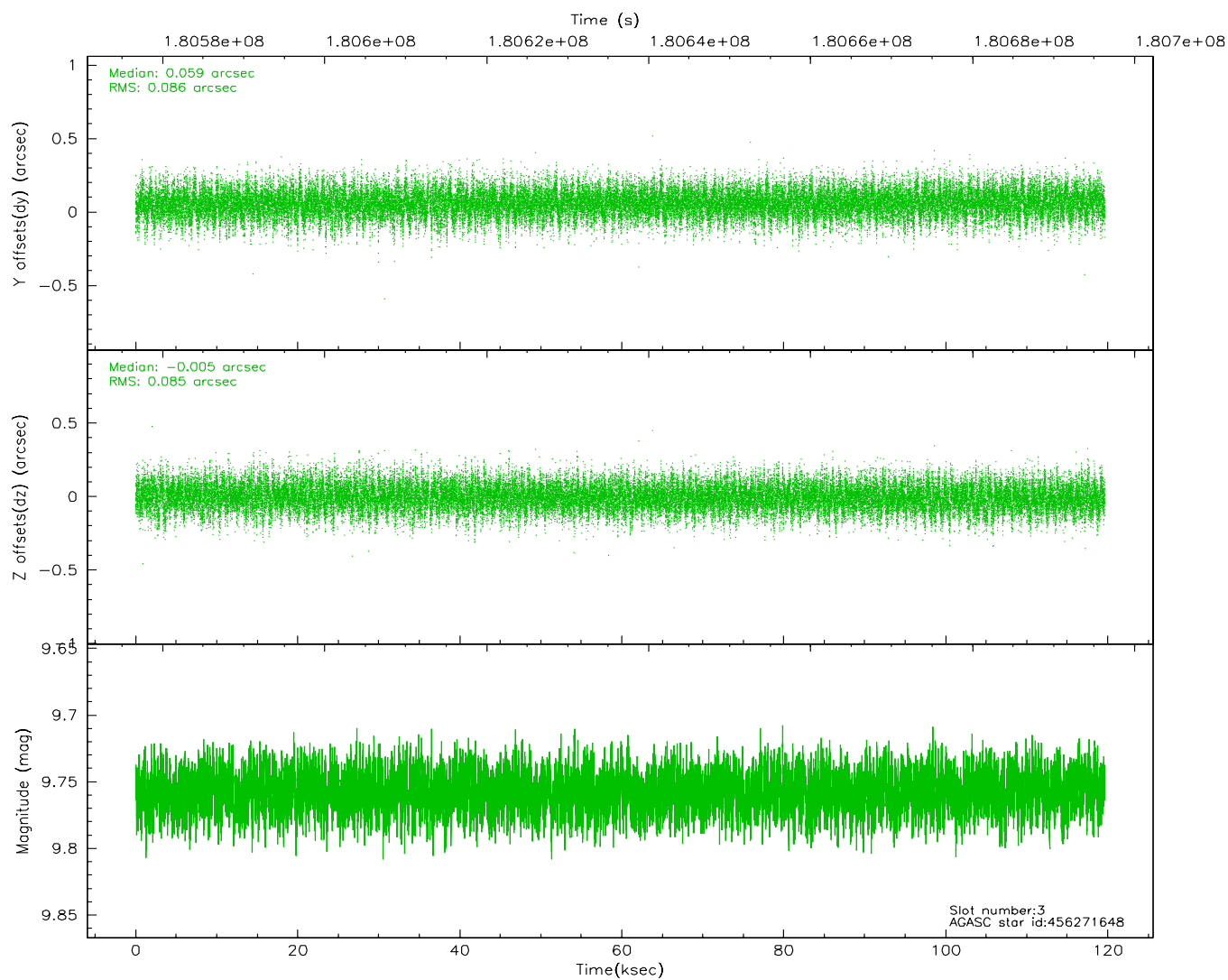
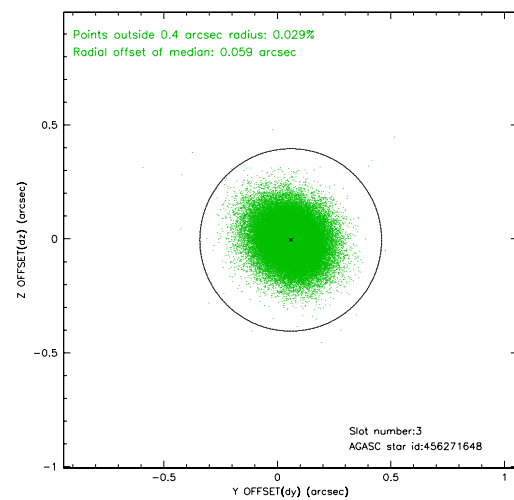
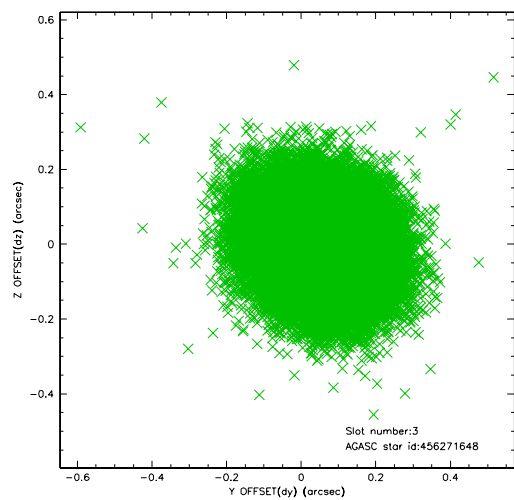


### Slot Statistics

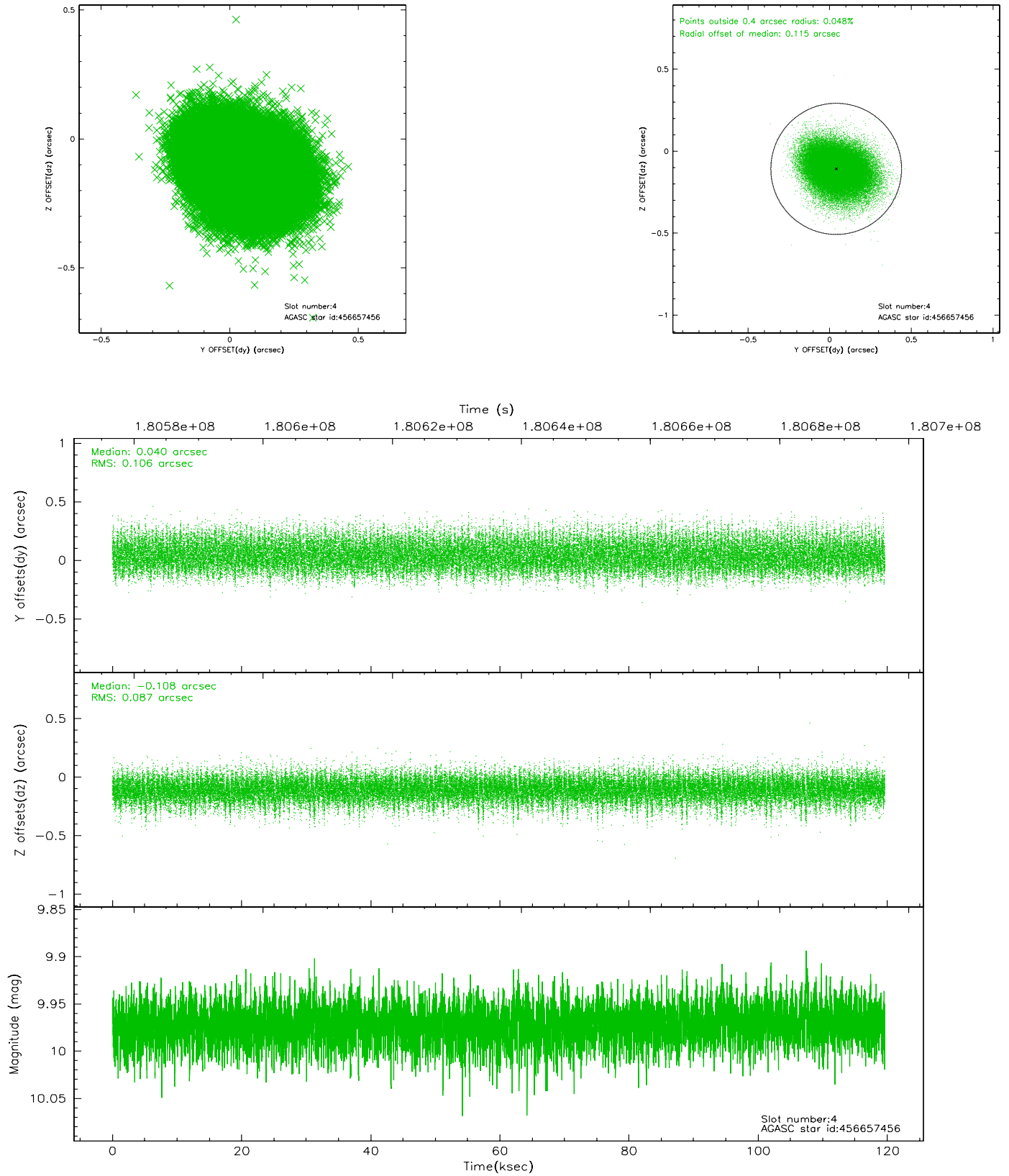
slot	status	id	mag	n_pts	med_dy	med_dz	dr1	dr2	ra	dec	mean_y	mean_z
0	FID	HRC-S-1	6.99	29182	0.126	-0.179	0.007	0.012	0.000000	0.000000	-1161.24	-458.86
1	FID	HRC-S-2	6.99	29183	0.154	-0.109	0.005	0.009	0.000000	0.000000	1238.42	-451.48
2	FID	HRC-S-3	7.01	29183	0.110	-0.014	0.007	0.013	0.000000	0.000000	-1163.92	570.82
3	GUIDE	456271648	9.76	58249	0.059	-0.005	0.127	0.211	225.468638	46.931082	1569.69	-2370.19
4	GUIDE	456657456	9.97	58320	0.040	-0.108	0.145	0.239	226.302561	48.425616	-1762.04	2313.05
5	GUIDE	456663544	8.48	58352	-0.086	-0.098	0.075	0.118	225.753297	47.731314	-423.41	-176.97
6	GUIDE	456665064	9.15	58341	-0.039	0.138	0.084	0.138	225.474071	47.940204	-1424.55	-312.44
7	GUIDE	456665928	8.48	58354	0.025	0.079	0.075	0.121	225.621888	47.743379	-637.82	-415.88

## 2.4 Star Slots

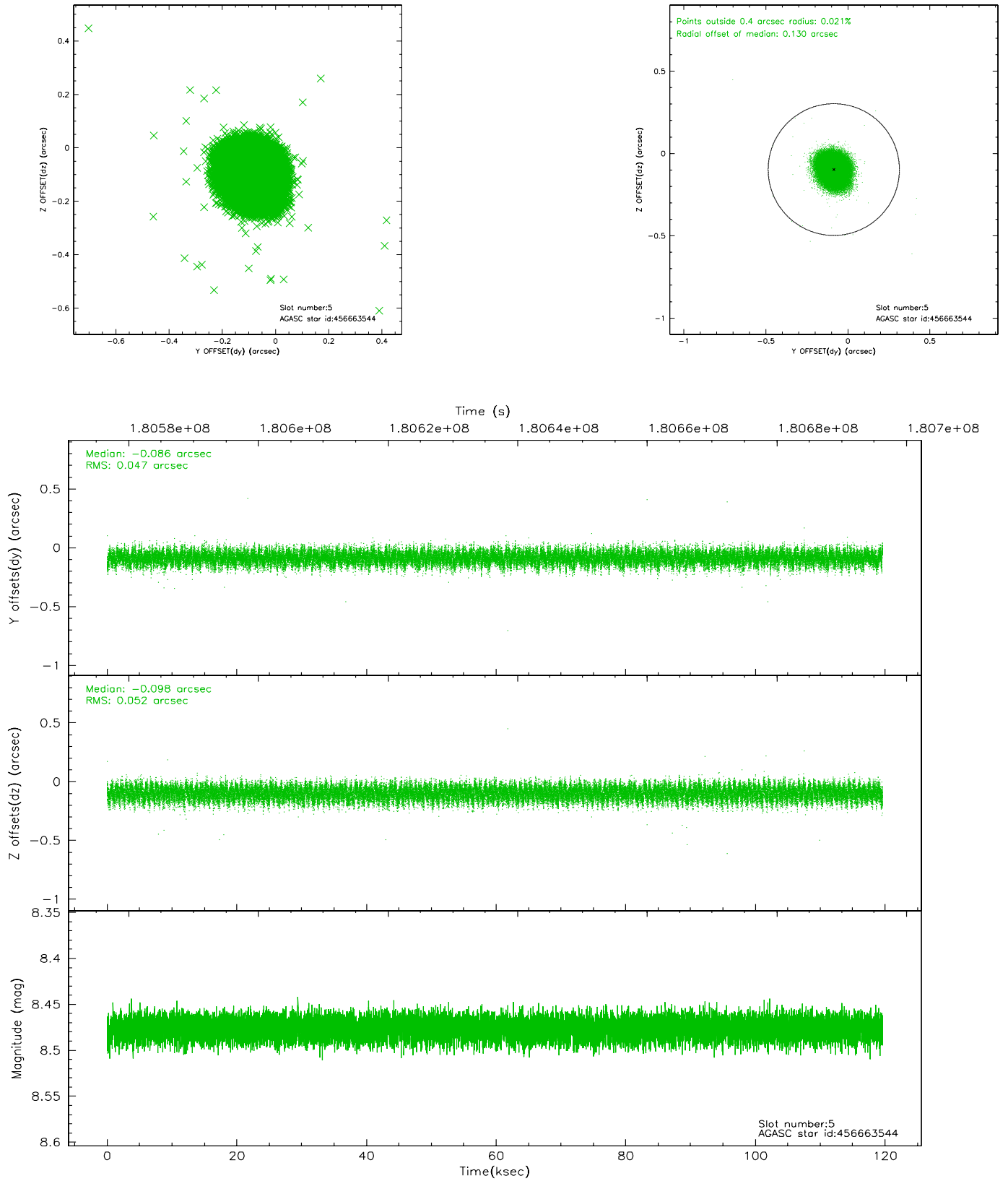
### 2.4.1 Slot 3



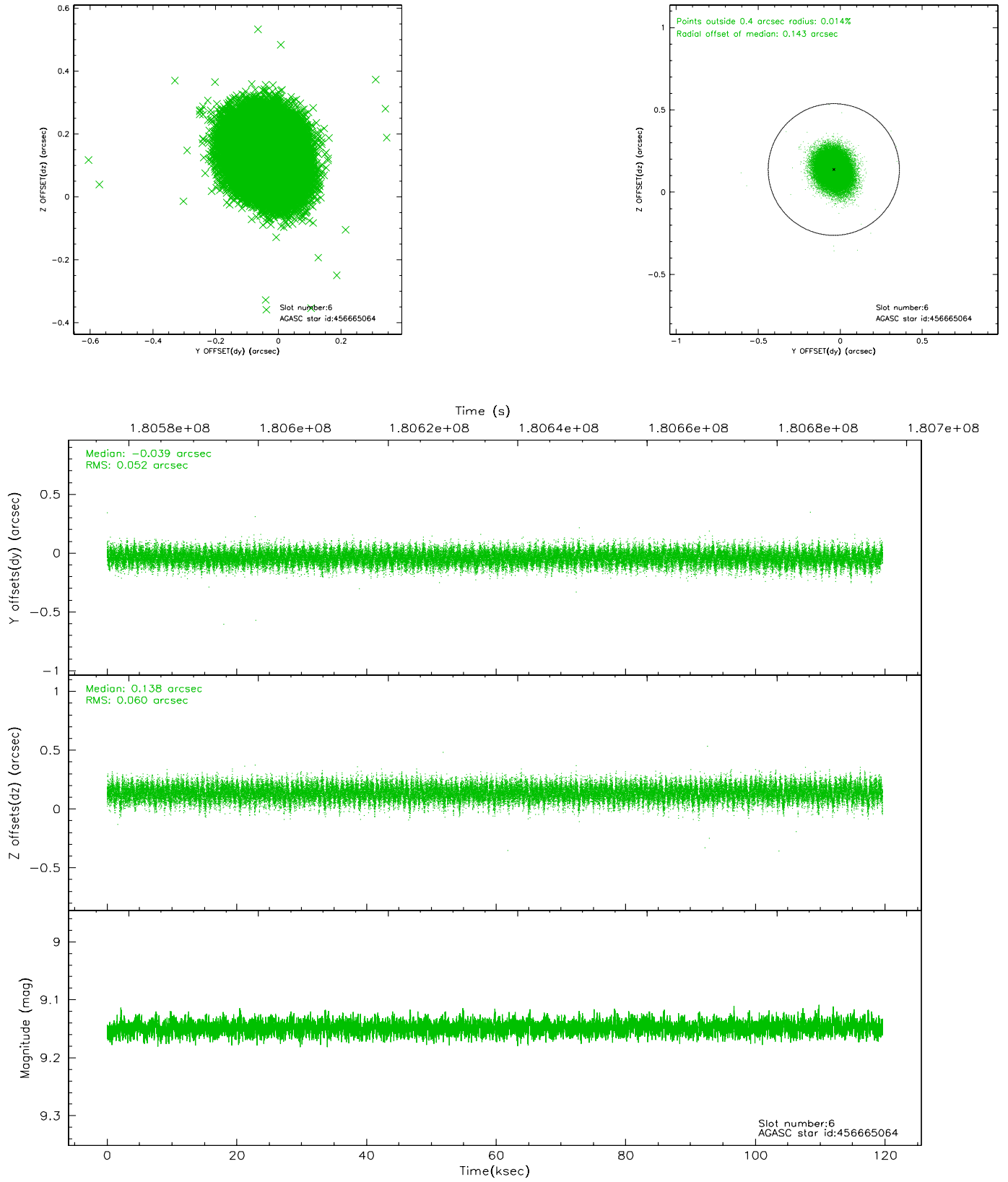
## 2.4.2 Slot 4



### 2.4.3 Slot 5

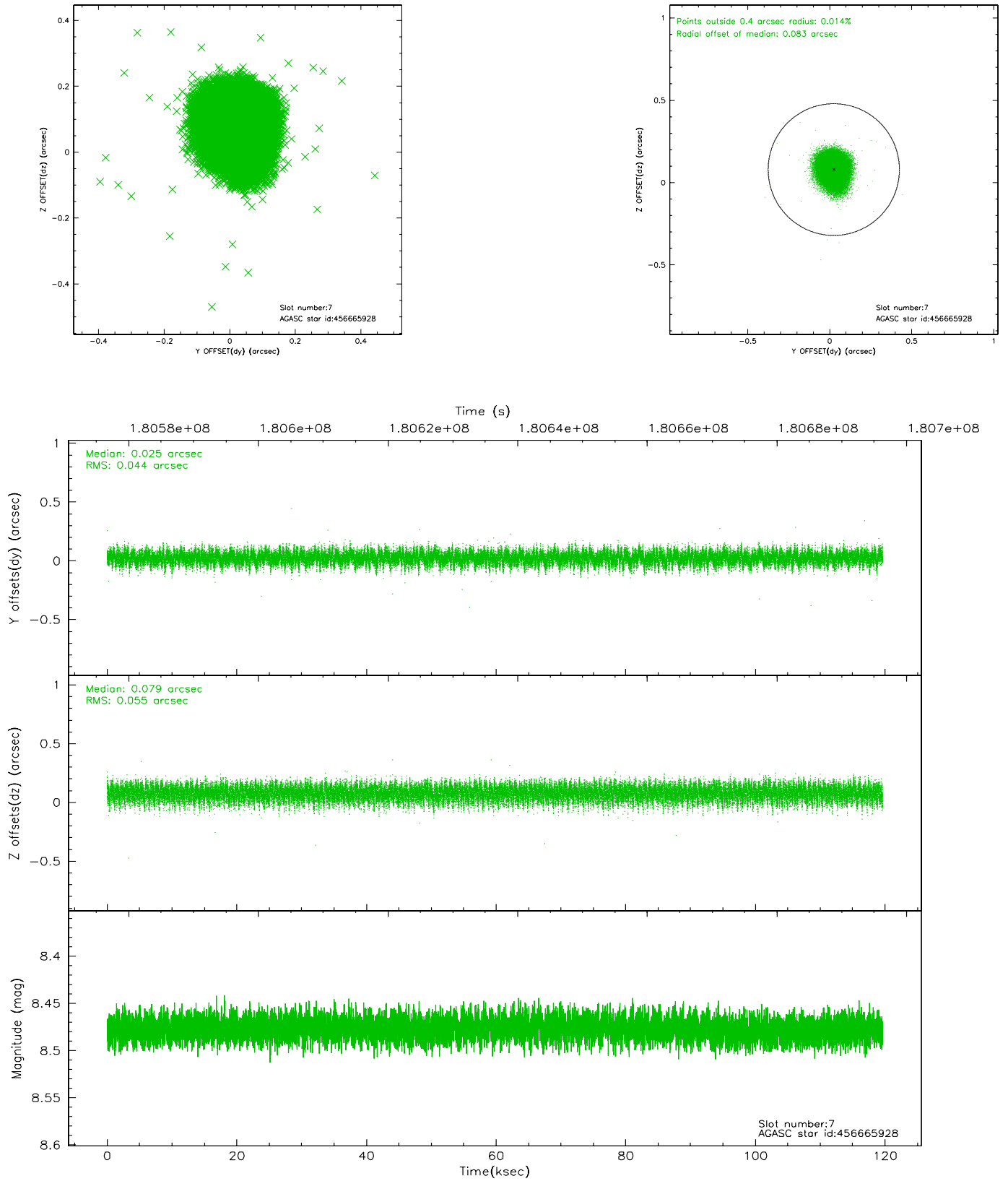


## 2.4.4 Slot 6





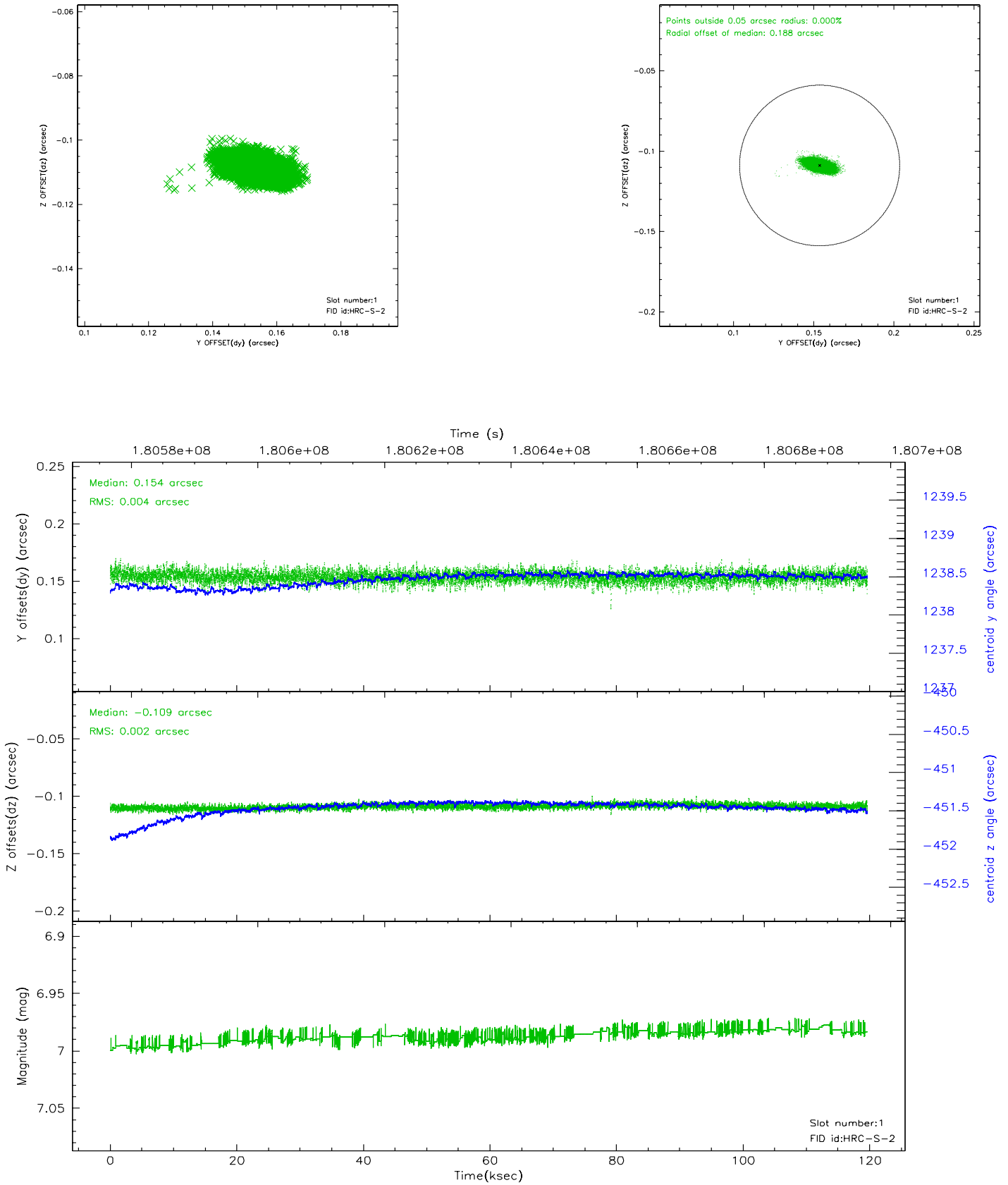
## 2.4.5 Slot 7



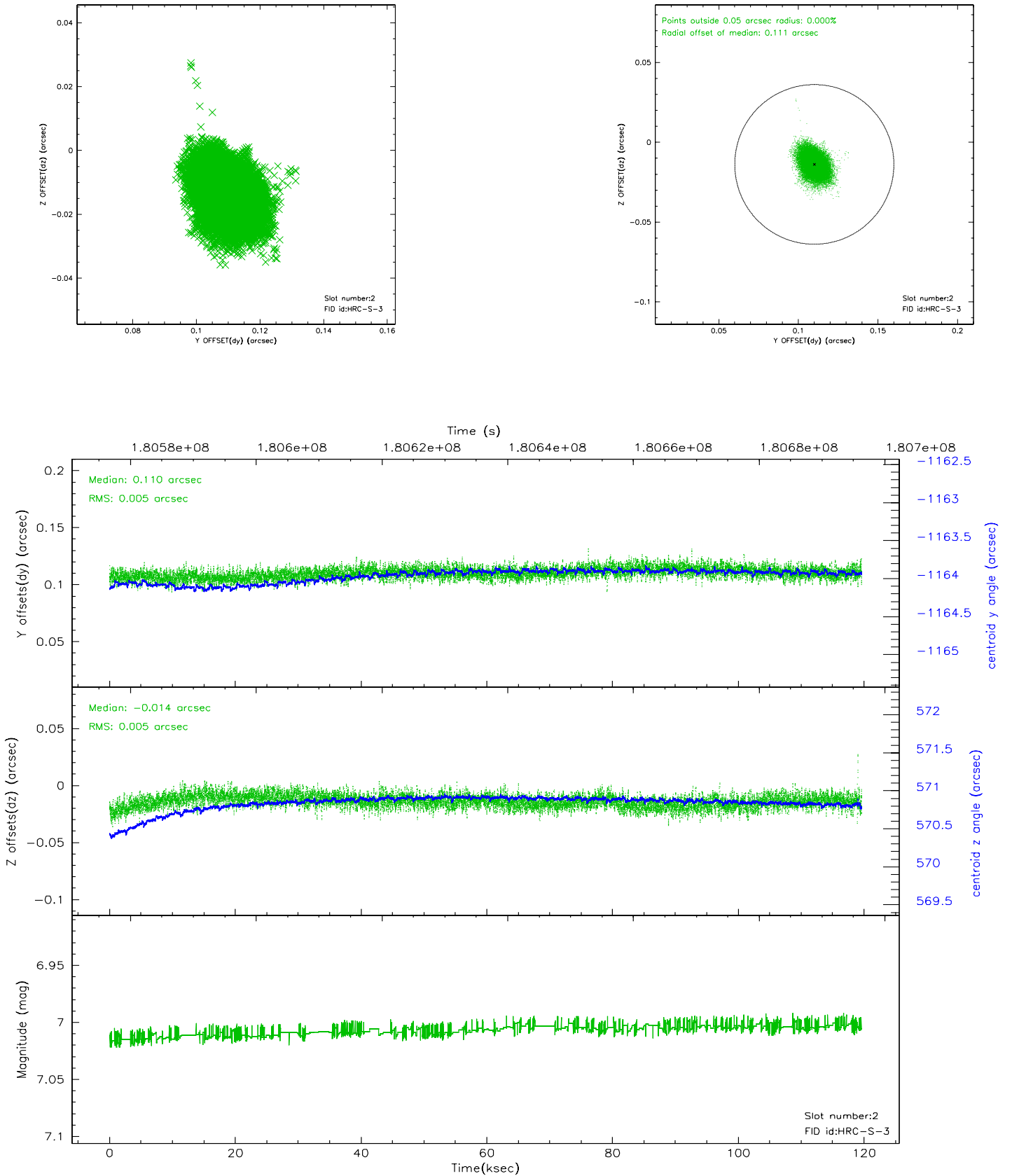
### 2.5.1 Slot 0



## 2.5.2 Slot 1

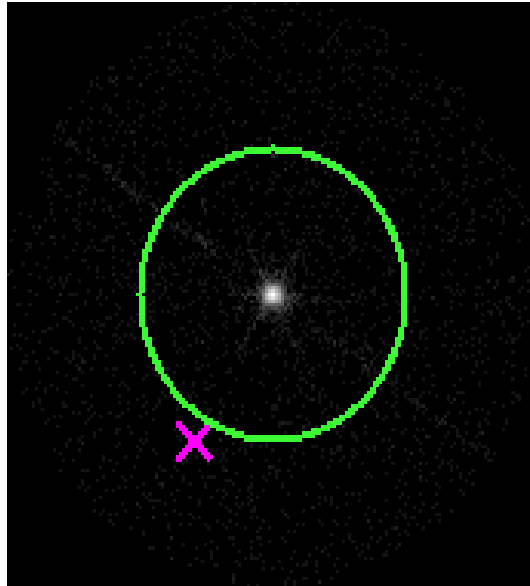


### 2.5.3 Slot 2



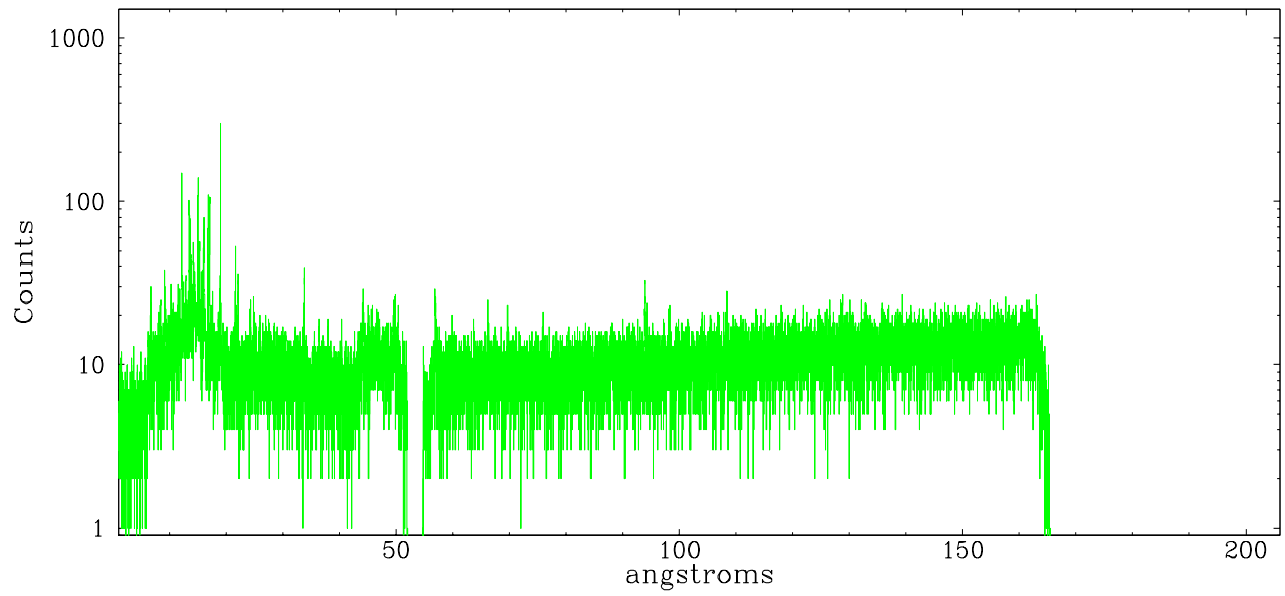
## 3 Gratings

### 3.1 LETG Arm

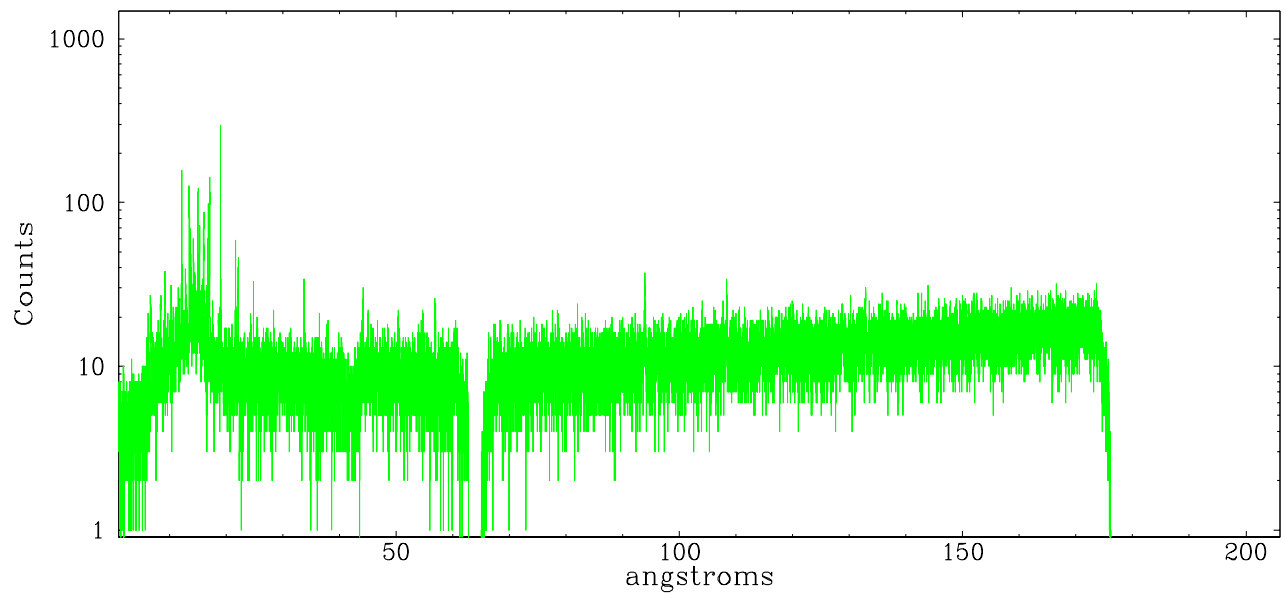


LETG Zero Order

leg order -1



leg order +1



## A Summary

### A.1 Status

V&V Scientist	Beth Sundheim
V&V Date (YYYY-MM-DD)	2006.07.05
V&V Edition	1
V&V Disposition and Status	OK
V&V Charge Time	119.231

### A.2 Comments