

V&V Reference Report

L2 ASCDS Version : 7.6.8.1

Observation 3748 - L2 Version 001
Chandra X-Ray Center

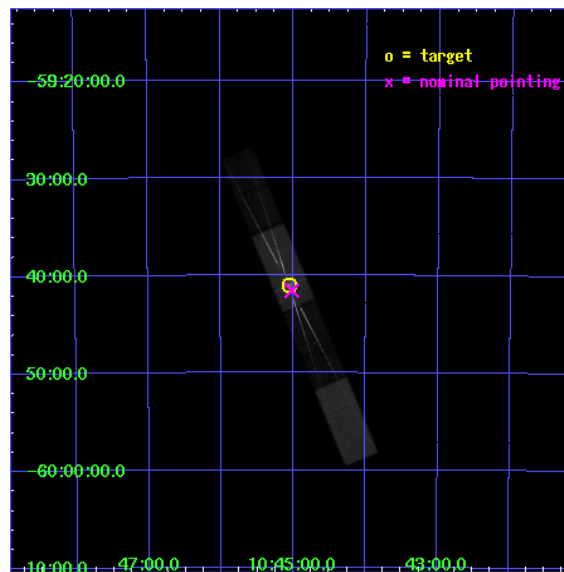
L2 Processing Date : Aug 7 2006

Contents

1	Front	2
2	OBI	3
2.1	OBI	3
2.1.1	Images	3
2.1.2	Bias	3
2.1.3	Parameters	4
2.1.4	Events	4
2.2	Compared Parameters	5
2.3	Aspect	6
2.4	Star Slots	9
2.4.1	Slot 3	9
2.4.2	Slot 4	10
2.4.3	Slot 5	11
2.4.4	Slot 6	12
2.4.5	Slot 7	13
2.5	FID Slots	14
2.5.1	Slot 0	14
2.5.2	Slot 1	15
2.5.3	Slot 2	16
3	Gratings	17
3.1	HEG Arm	17
3.2	MEG Arm	19
A	Summary	21
A.1	Status	21
A.2	Comments	21

1 Front

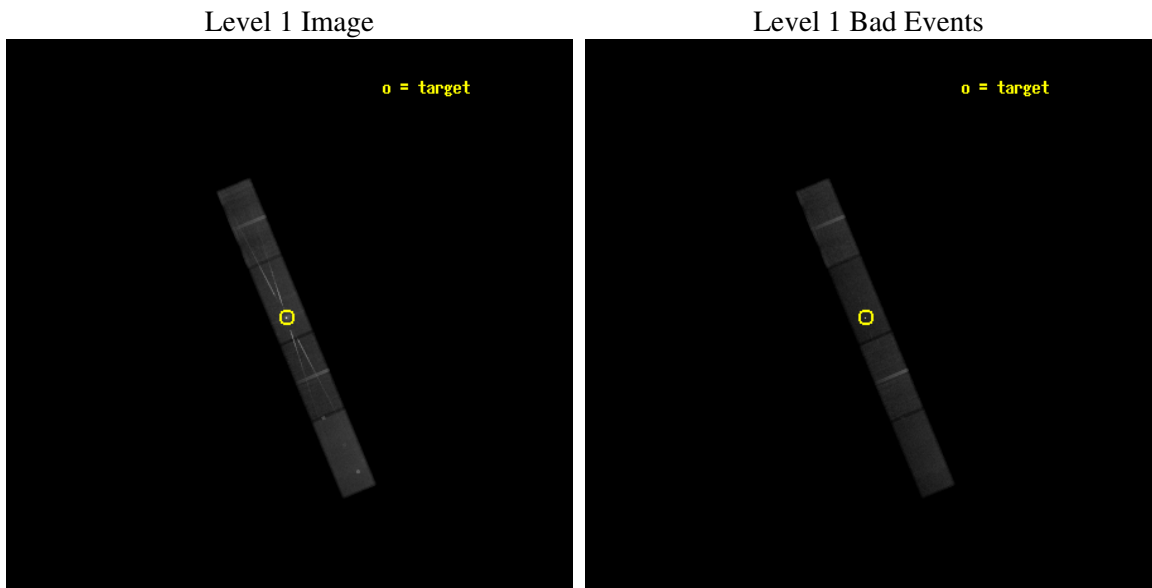
seq_num	200218
obs_id	3748
title	UNVEILING ETA CAR: CHANDRA OBSERVATIONS DURING THE 2003.5 EVENT
observer	Dr Michael Corcoran
object	ETA CARINAE
dtcycle	0
cycle	P
ra_targ	161.265
dec_targ	-59.684528
ra_nom	161.25464190807
dec_nom	-59.692649281512
roll_nom	247.34266346986
revision	2
ontime	100100.00042617
livetime	97249.209318716
ontime5	100100.00042617
ontime6	100097.11839595
ontime7	100100.00042617
ontime8	100098.55943599
l2events	587476



2 OBI

2.1 OBI

2.1.1 Images

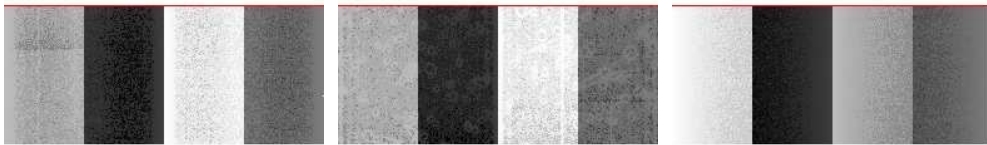


2.1.2 Bias

Chip 5

Chip 6

Chip 7



Chip 8



2.1.3 Parameters

obi_num	0
ascdsver	7.6.8.1
caldbver	3.2.2
date	2006-08-07T04:34:51
revision	2

sched_exp_time	99521.000000
ontime	100102.11026353
ontime5	100103.55127361
ontime6	100100.6692434
ontime7	100102.11026353
ontime8	100102.11028343
l1events	1683762

2.1.4 Events

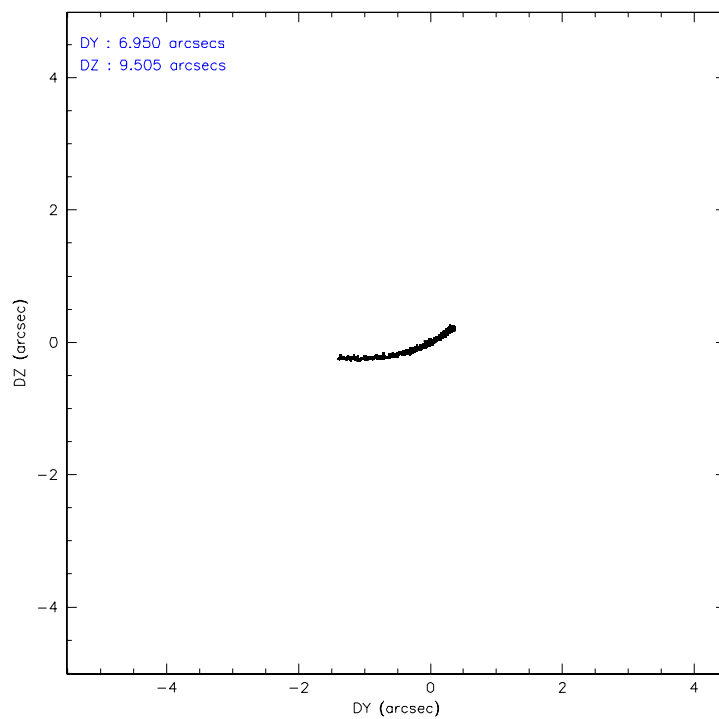
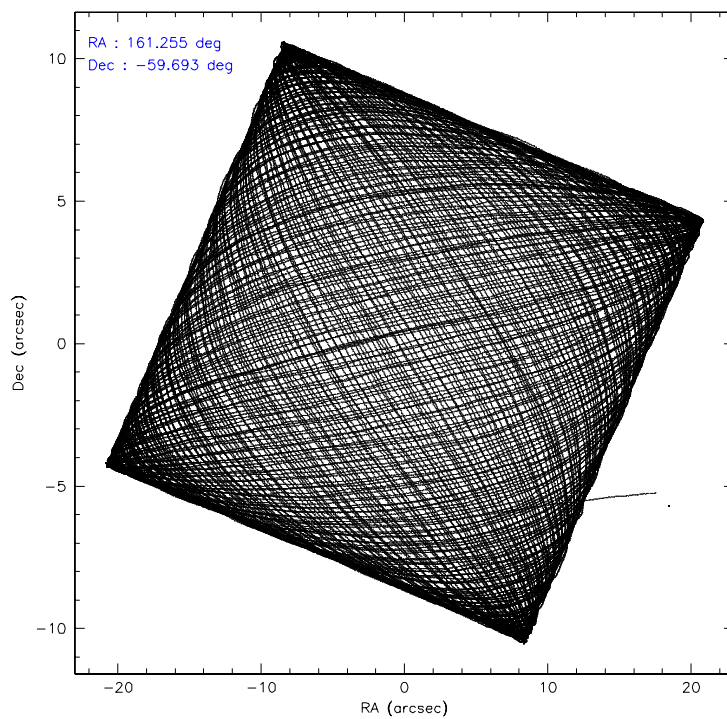
	ccd 5	ccd 6	ccd 7	ccd 8
level 1 events	412016	351494	523683	396569
rejected events	220327	264045	237107	303183
rejected %	53%	75%	45%	76%

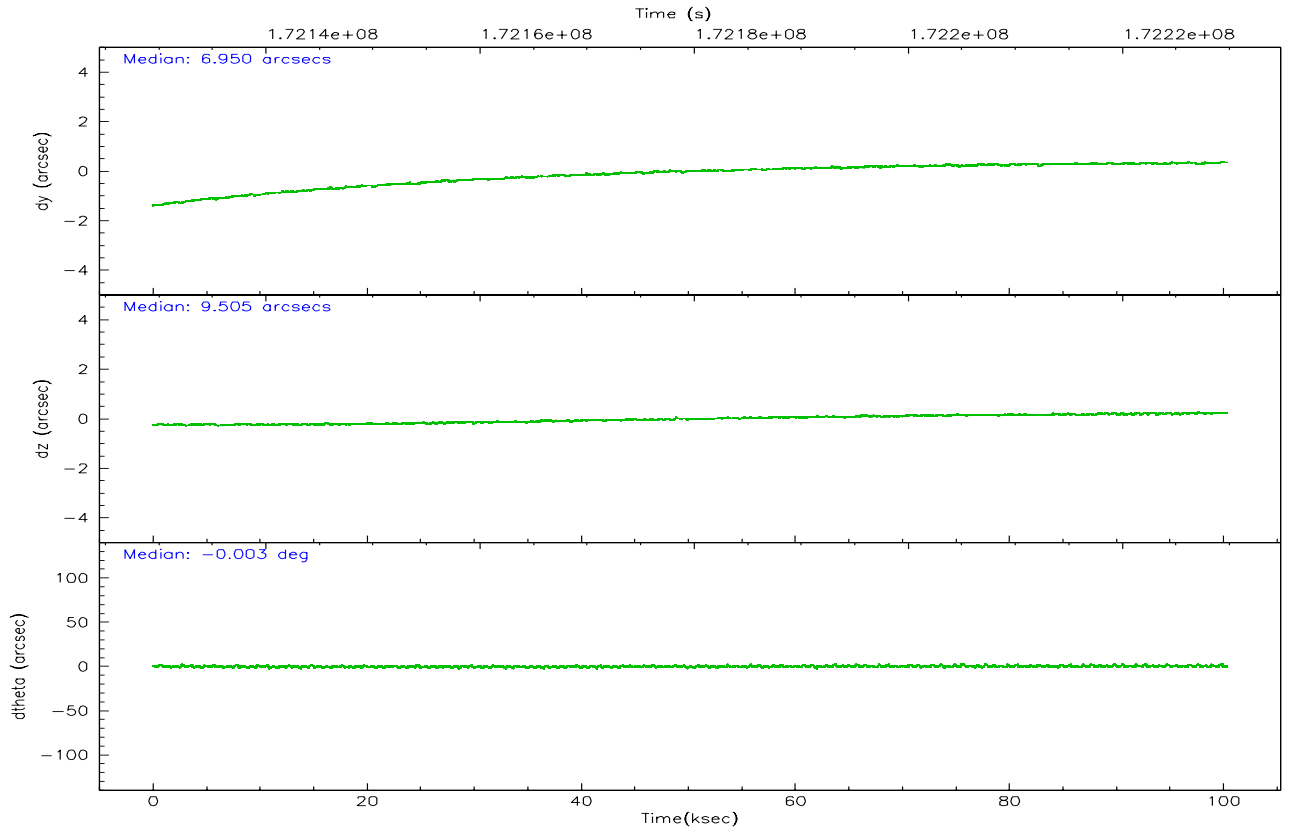
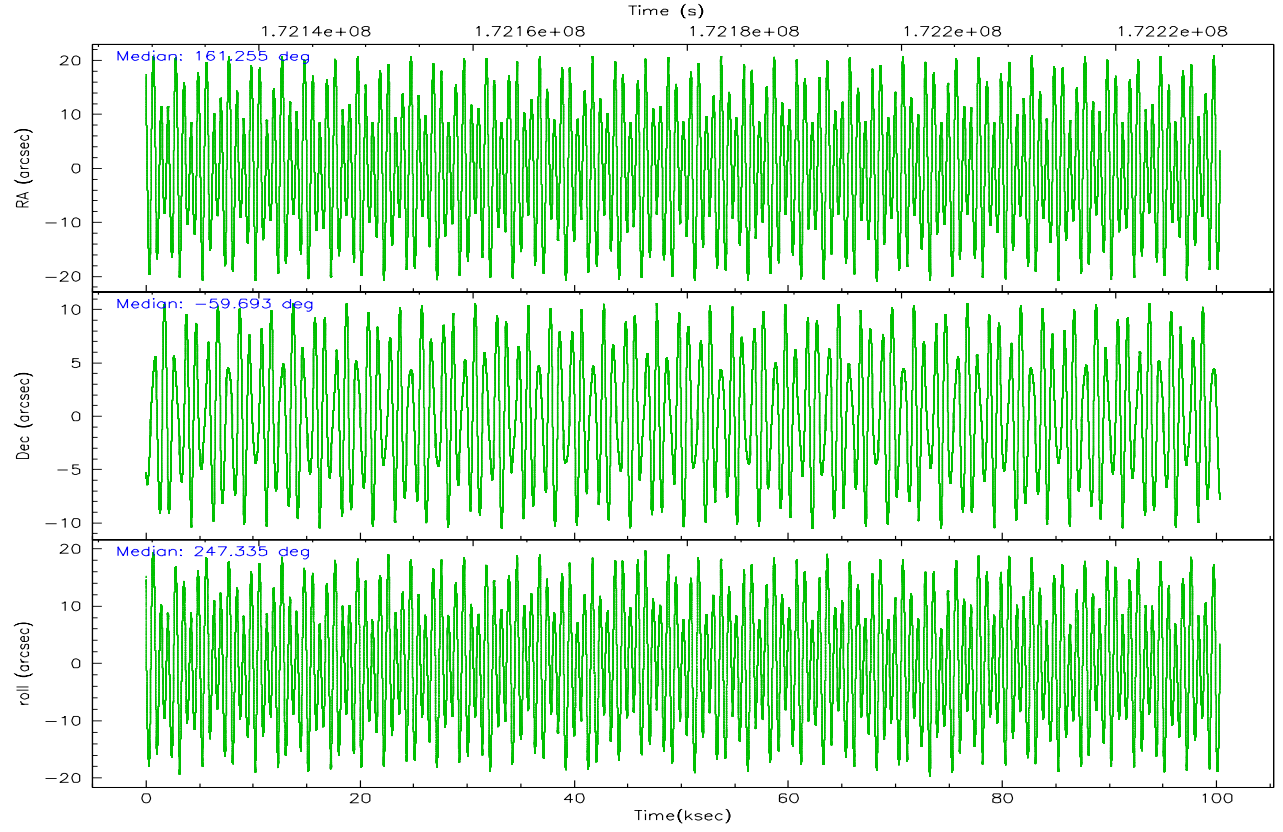
	ccd 5	ccd 6	ccd 7	ccd 8
grade 0 events	21279	49962	34712	34400
	5%	14%	6%	8%
grade 1 events	600	192	1413	188
	0%	0%	0%	0%
grade 2 events	55064	13477	66563	17972
	13%	3%	12%	4%
grade 3 events	8027	6795	24025	9854
	1%	1%	4%	2%
grade 4 events	7668	6795	23464	9278
	1%	1%	4%	2%
grade 5 events	22176	11508	34685	15059
	5%	3%	6%	3%
grade 6 events	99664	10424	137823	21883
	24%	2%	26%	5%
grade 7 events	197538	252341	200998	287935
	47%	71%	38%	72%

2.2 Compared Parameters

Parameter	Planned	Actual	Parameter	Planned	Actual
Instrument	ACIS	ACIS	Obspar format version number	6	6
Detector	ACIS-5678	ACIS-5678	Obspar file type	PREDICTED	ACTUAL
Grating	HETG	HETG	Obspar update status	NONE	UPDATED
Data mode	FAINT	FAINT	On-chip summing requested	N	N
Observation mode	POINTING	POINTING	Subarray requested	CUSTOM	CUSTOM
Pointing RA	161.247008	161.2546419080704	Subarray start row	15	15
Pointing Dec	-59.665694	-59.69264928151232	Subarray row count	440	440
Pointing Roll	247.179444	247.3426634698649	Alternating exposures requested	N	N
SIM focus pos (mm)	-0.684267	-0.6828225247311905	Primary exposure time	0.000000	1.4
SIM defocus (mm)	0	0.001444936568705701			
SIM translation stage pos (mm)	-183.332523	-183.3212429520412			
SIM translation stage offset (mm)	-6.8	-6.811279630966652			
Phase constraints	Y	Y			
Phase period	2016.000000	2016.000000			
Phase epoch	50794.000000	50794.000000			
Phase start	0.990000	0.990000			
Phase end	1.000000	1.000000			
Phase start error	0.005000	0.005000			
Phase end error	0.005000	0.005000			
Observation start time	172130275.184000	172128991.84764			
Observation start date	2003-06-16T05:56:51	2003-06-16T05:36:31			
Observation end time	172229796.184000	172230653.40196			
Observation end date	2003-06-17T09:35:32	2003-06-17T09:50:53			
Read mode	TIMED	TIMED			

2.3 Aspect



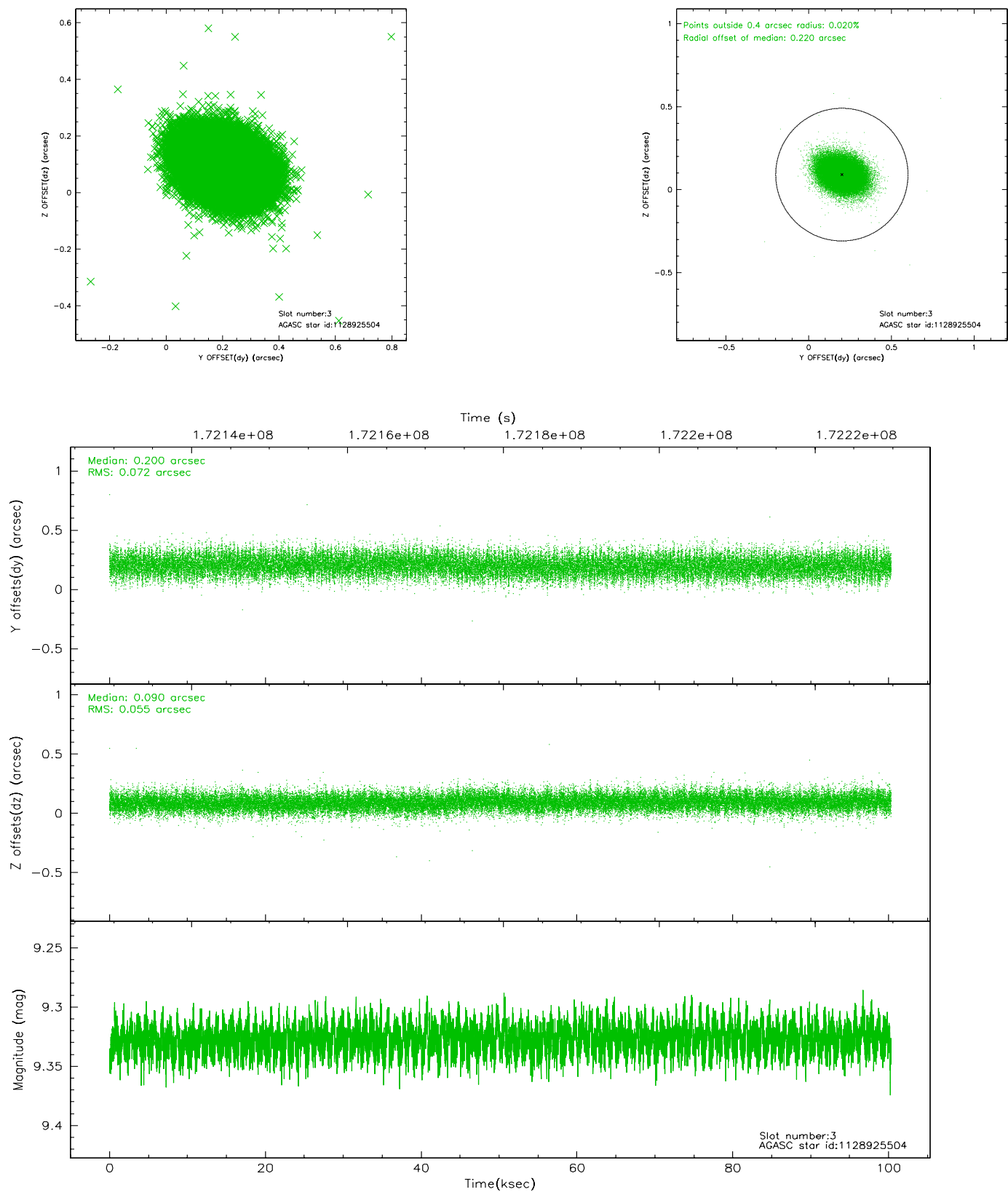


Slot Statistics

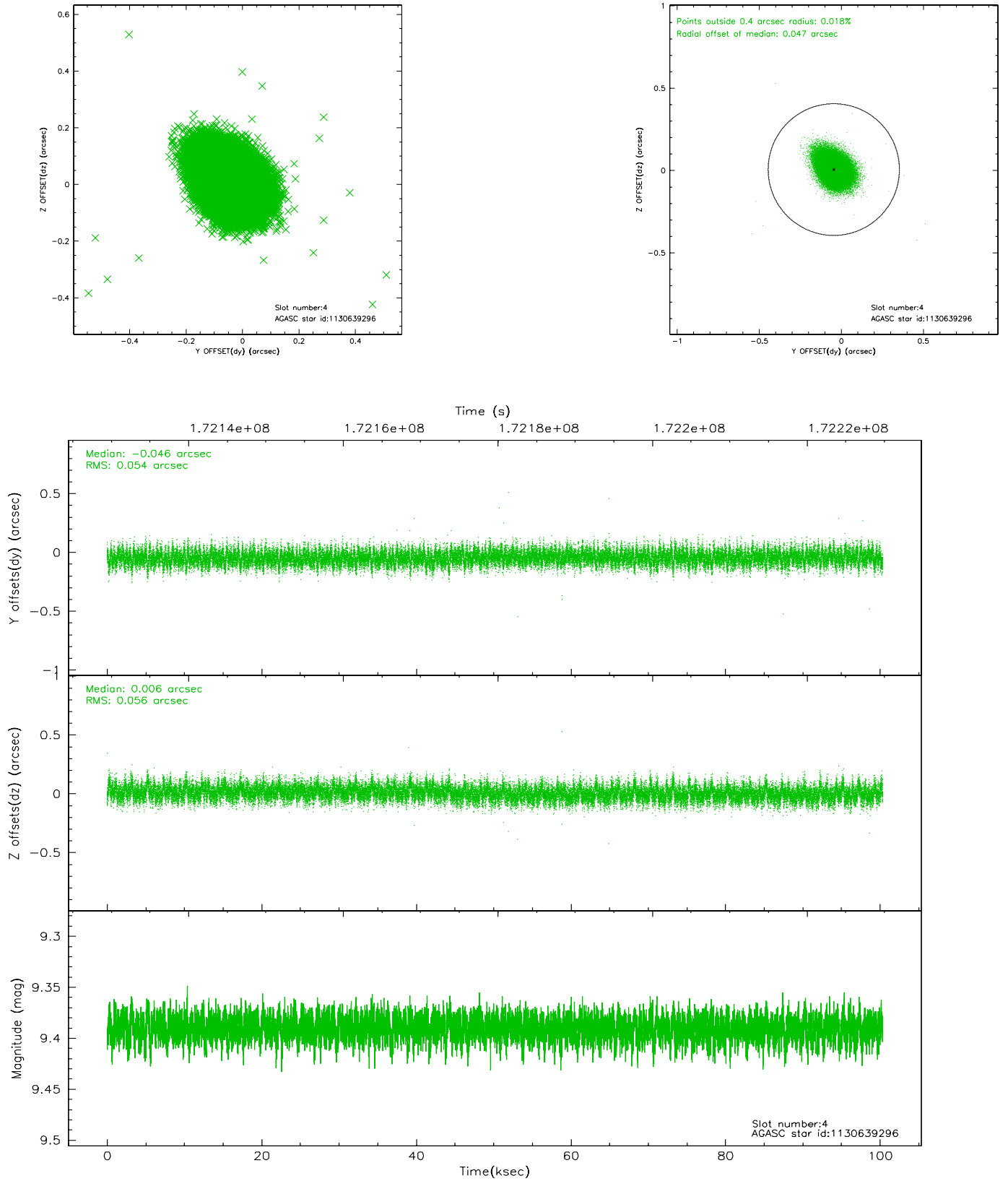
slot	status	id	mag	n_pts	med_dy	med_dz	dr1	dr2	ra	dec	mean_y	mean_z
0	FID	ACIS-S-3	7.35	24471	-0.080	-0.023	0.011	0.019	0.000000	0.000000	54.04	-2000.17
1	FID	ACIS-S-4	7.18	24475	0.026	0.053	0.018	0.031	0.000000	0.000000	2154.33	37.49
2	FID	ACIS-S-5	7.23	24474	0.030	-0.022	0.022	0.035	0.000000	0.000000	-1811.98	31.04
3	GUIDE	1128925504	9.33	48924	0.200	0.090	0.095	0.158	159.641491	-59.975926	2184.02	-2218.23
4	GUIDE	1130639296	9.39	48918	-0.046	0.006	0.082	0.137	162.190960	-59.617844	-814.08	1522.07
5	GUIDE	1128940824	9.45	48902	-0.099	-0.096	0.112	0.192	159.689217	-59.812042	1610.20	-2381.56
6	GUIDE	1130640288	9.15	48924	-0.120	-0.041	0.107	0.173	160.869759	-59.100305	-1603.48	-1431.67
7	GUIDE	1130645296	9.07	48931	0.063	0.044	0.096	0.159	162.541185	-59.548371	-1283.89	2021.43

2.4 Star Slots

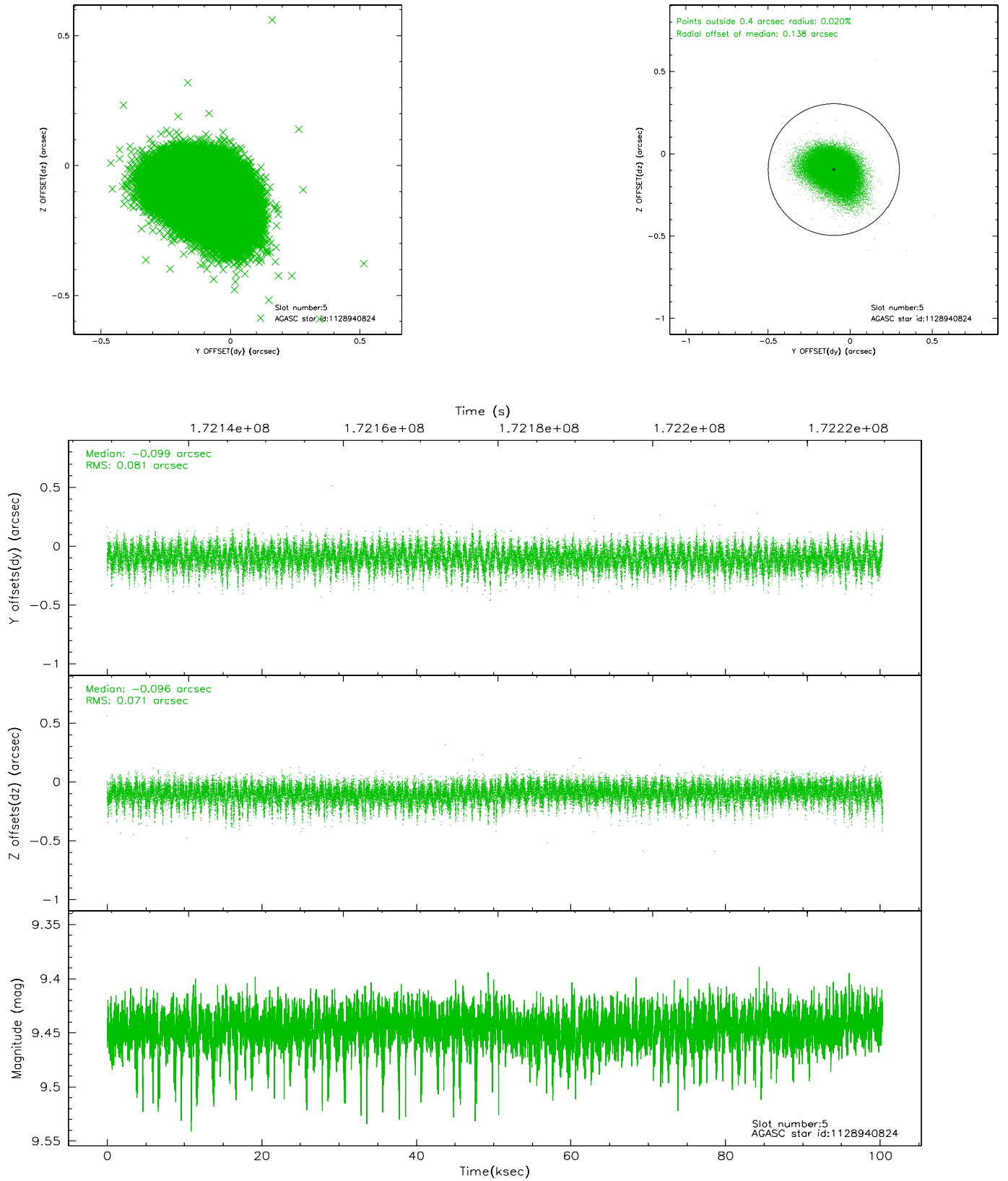
2.4.1 Slot 3



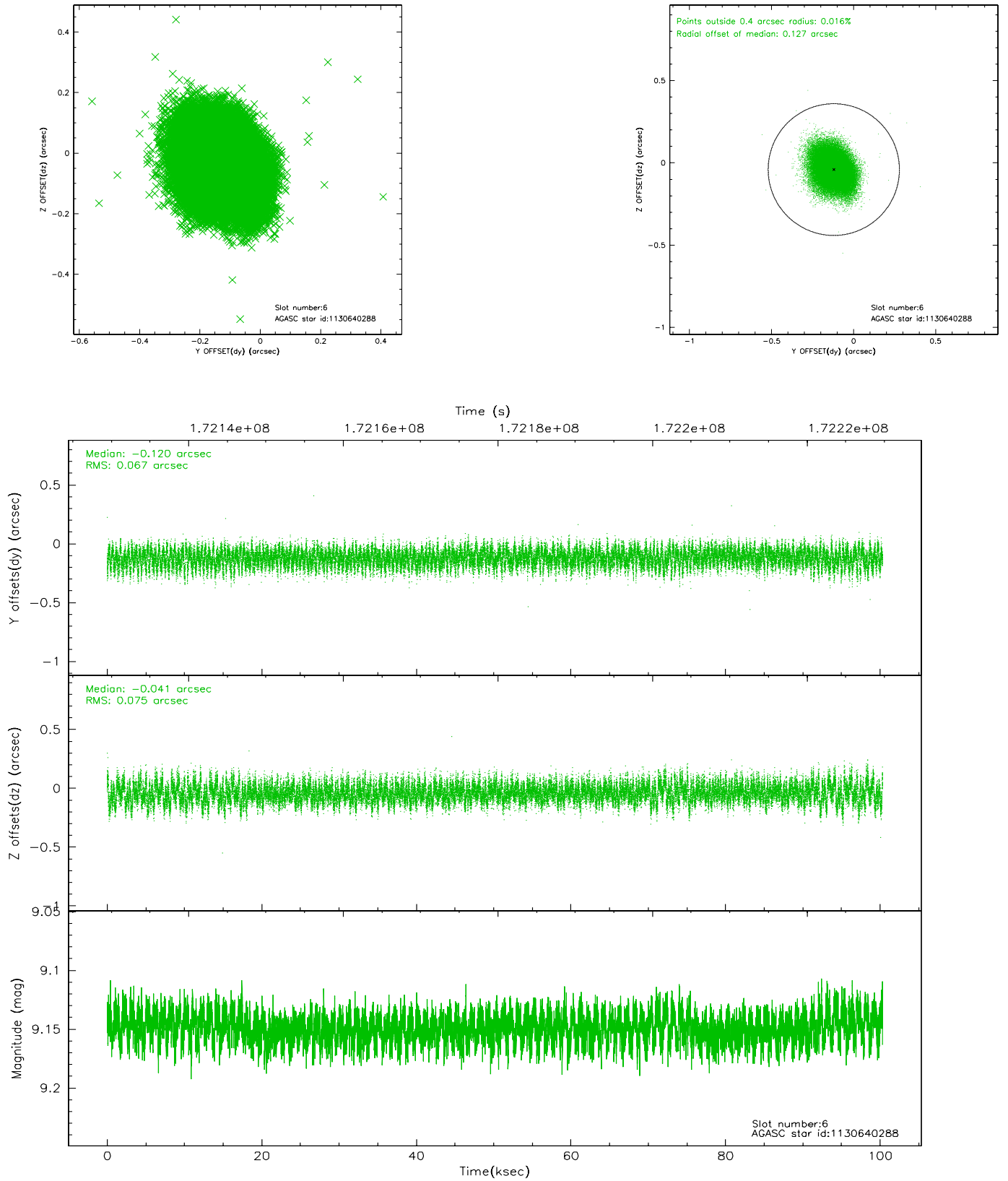
2.4.2 Slot 4



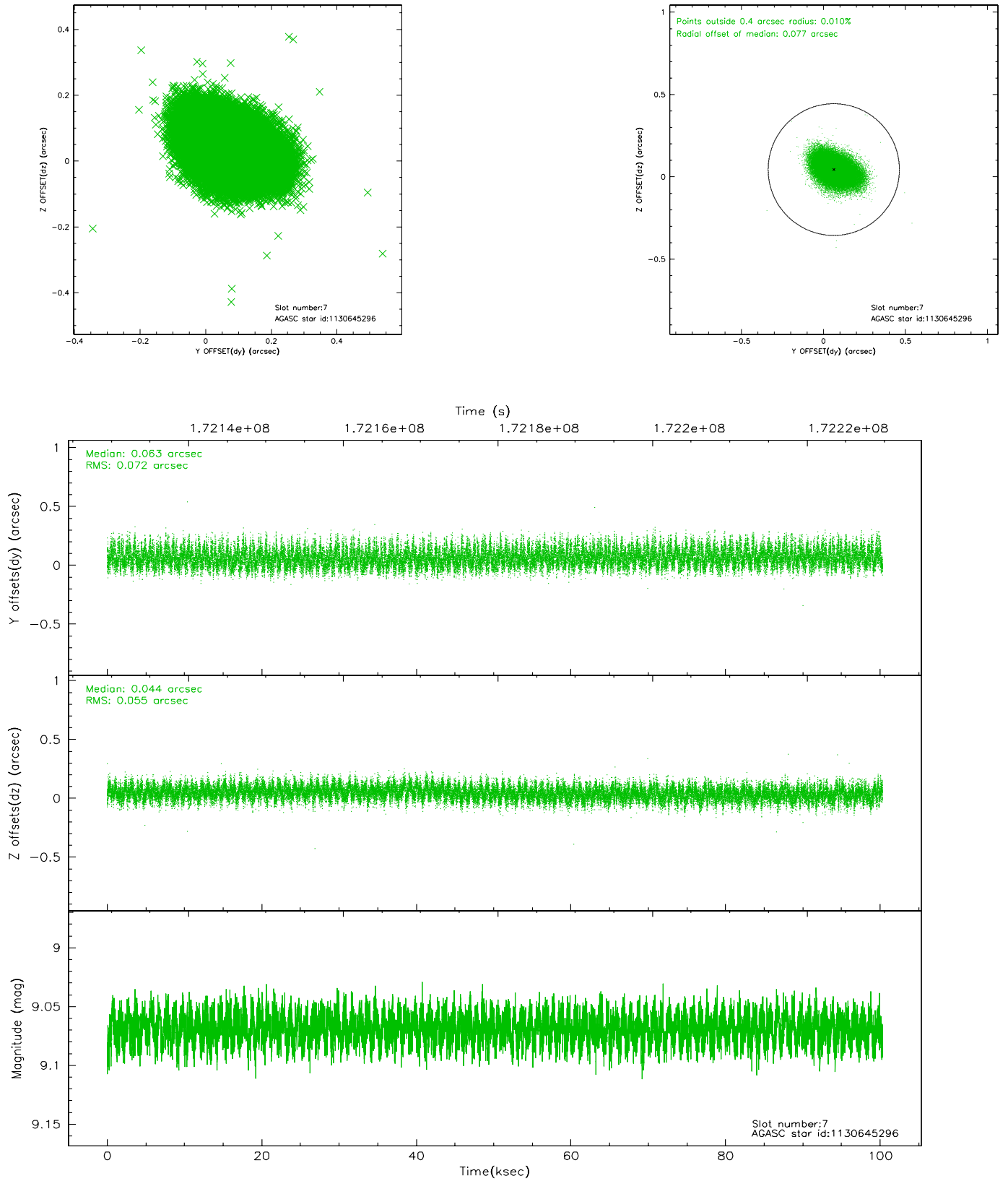
2.4.3 Slot 5



2.4.4 Slot 6

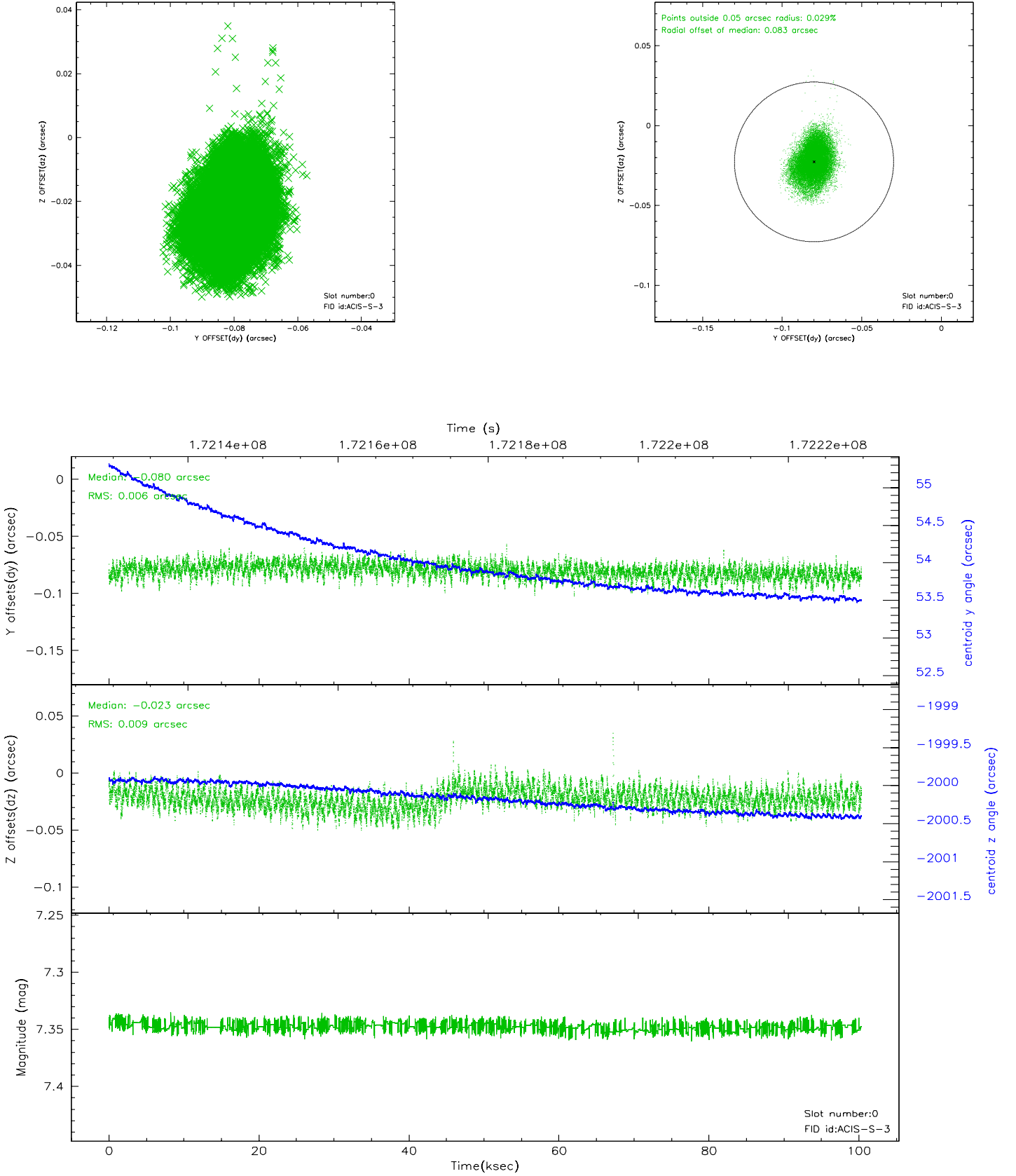


2.4.5 Slot 7

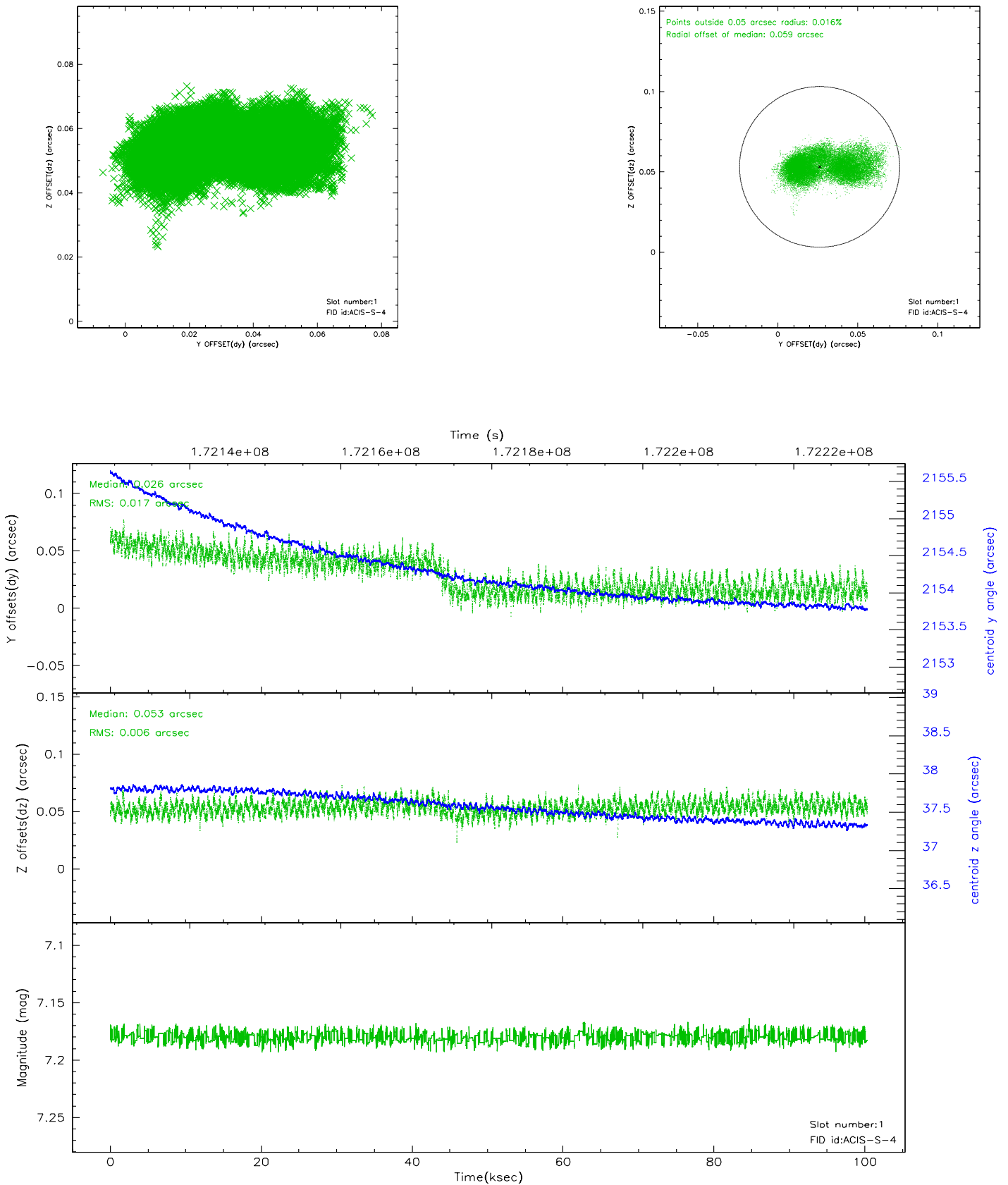


2.5 FID Slots

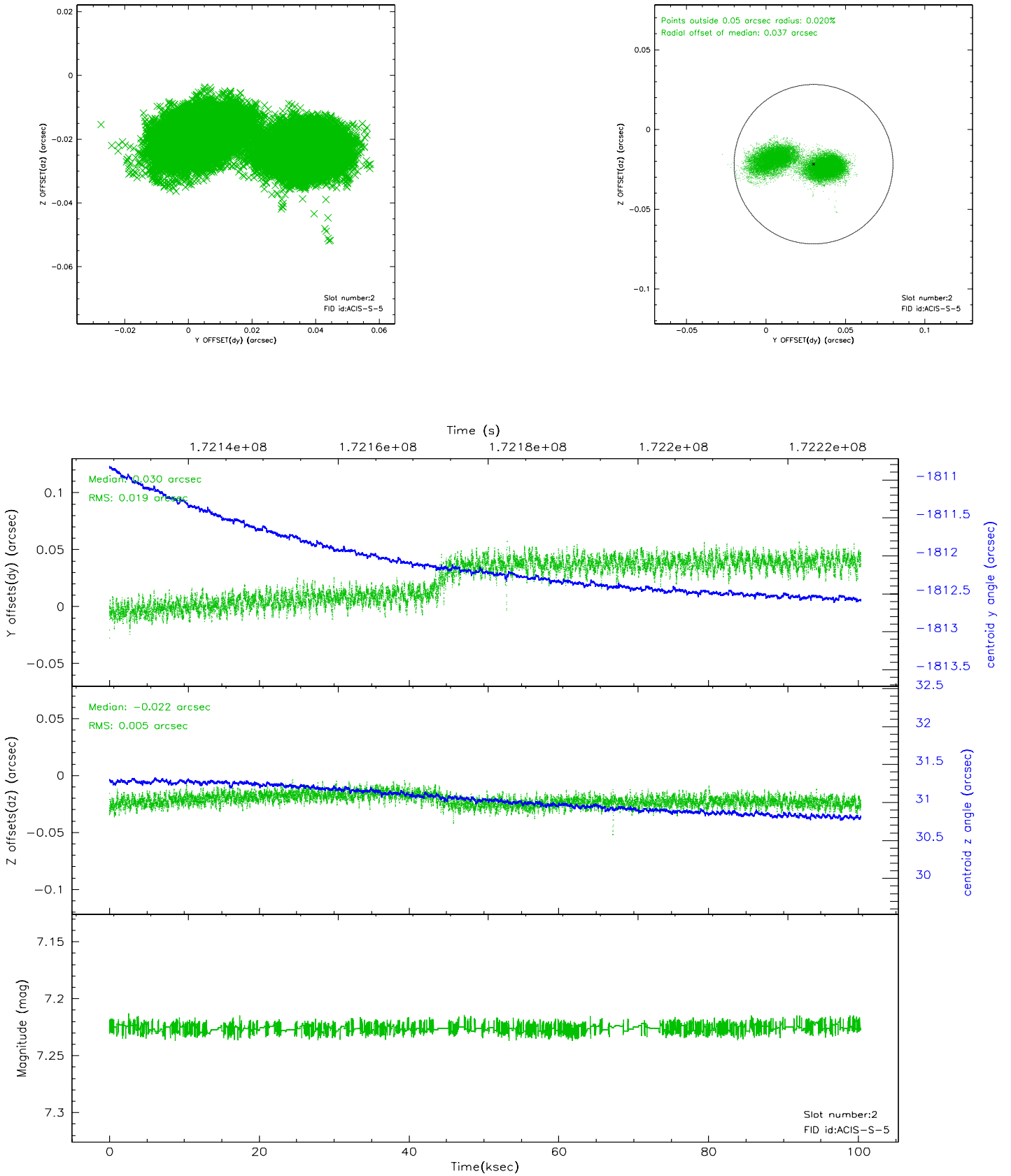
2.5.1 Slot 0



2.5.2 Slot 1



2.5.3 Slot 2

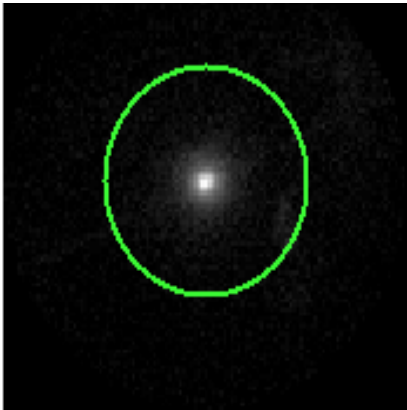


3 Gratings

3.1 HEG Arm



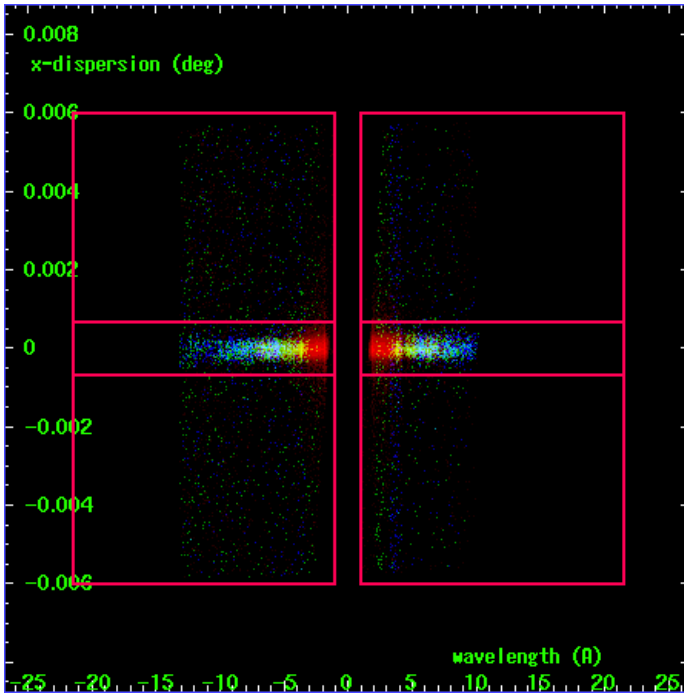
HEG Order Sort 123



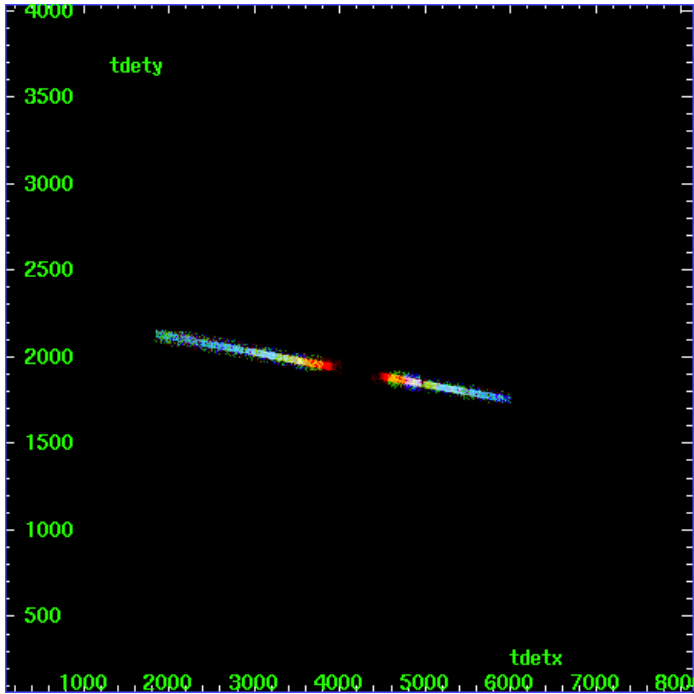
HEG Zero Order



HEG Order Sort ALL

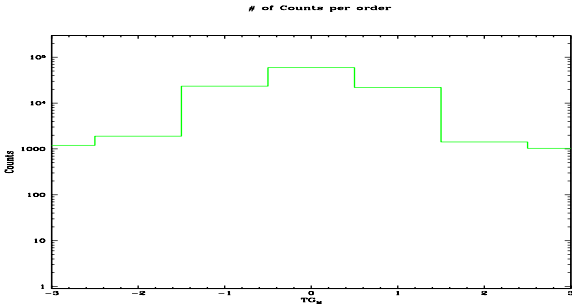


Spot Image HEG

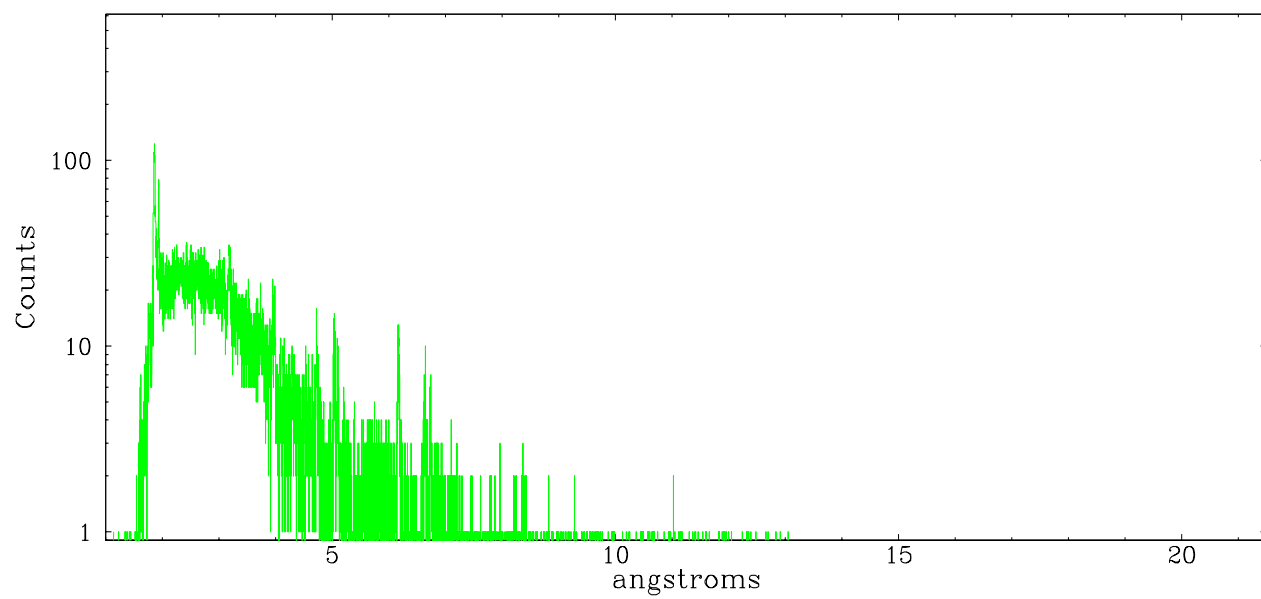


Full Detector HEG

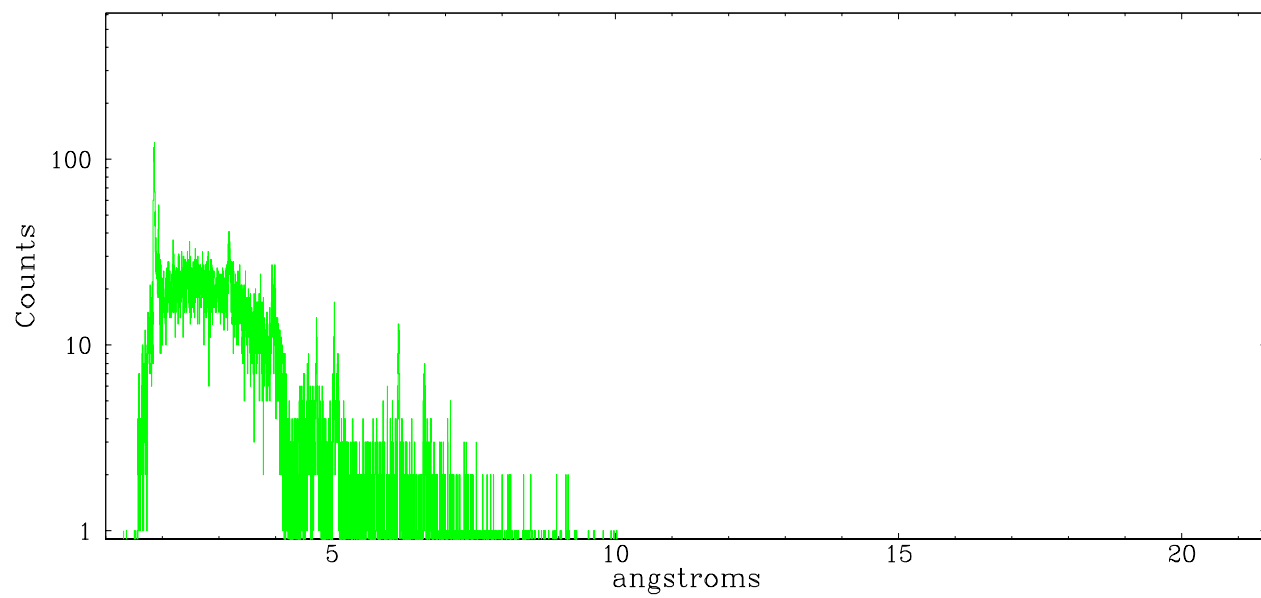
	order -3	order -2	order -1	order 0	order 1	order 2	order 3
Events	1197	1895	23399	59163	22015	1420	1030



heg order -1



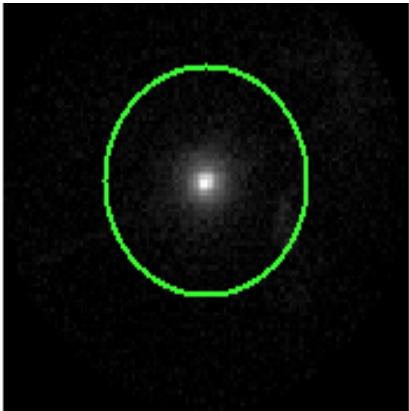
heg order +1



3.2 MEG Arm



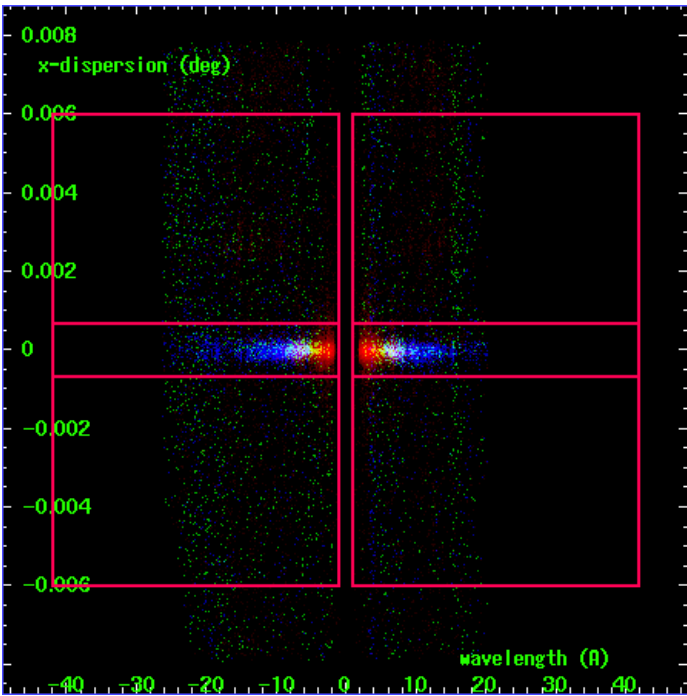
MEG Order Sort 123



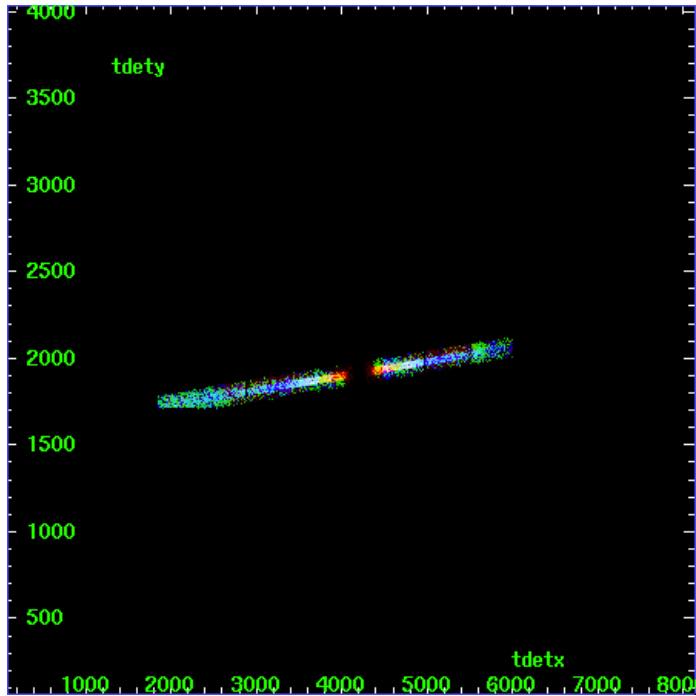
MEG Zero Order



MEG Order Sort ALL

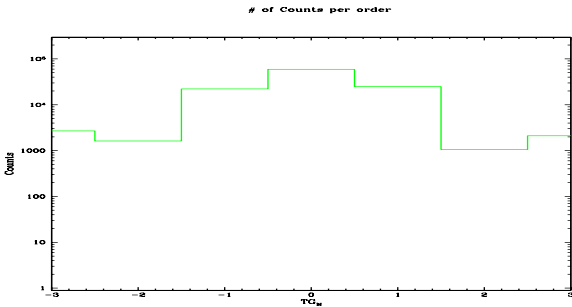


Spot Image MEG

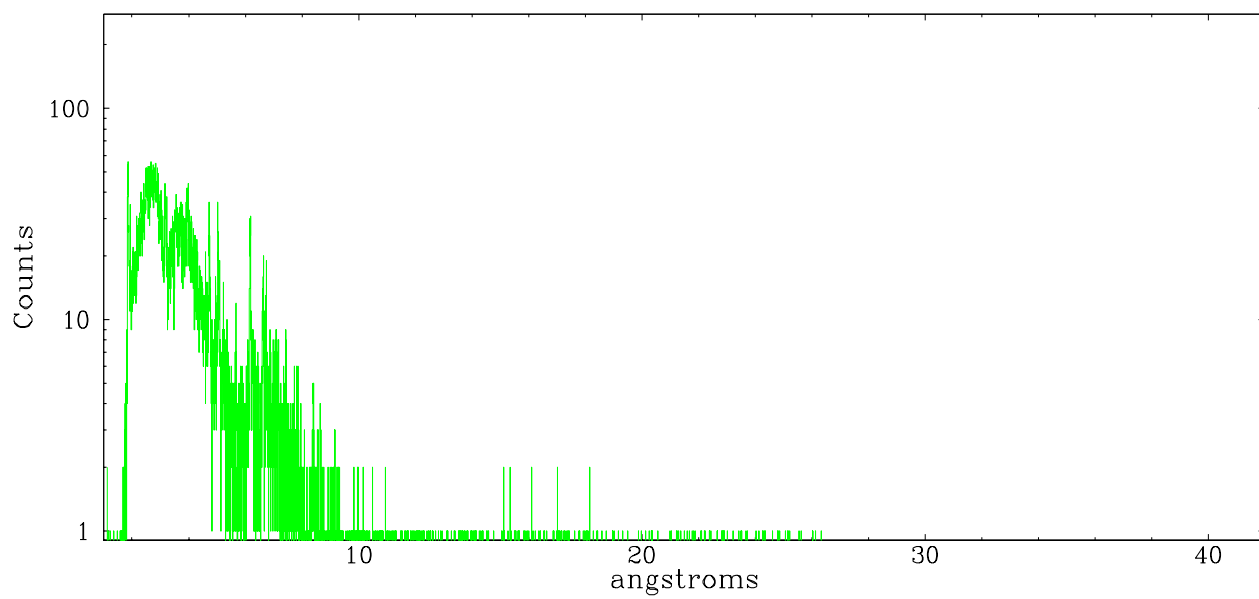


Full Detector MEG

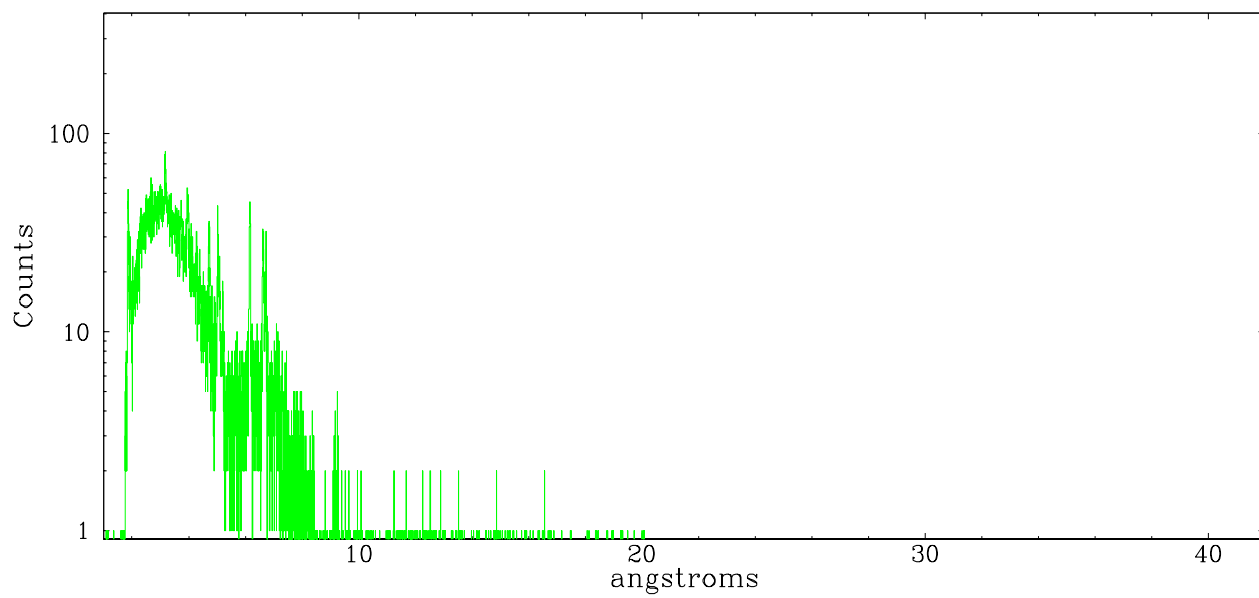
	order -3	order -2	order -1	order 0	order 1	order 2	order 3
Events	2686	1622	22080	59163	24831	1051	2110



meg order -1



meg order +1



A Summary

A.1 Status

V&V Scientist	Beth Sundheim
V&V Date (YYYY-MM-DD)	2006.08.07
V&V Edition	1
V&V Disposition and Status	OK
V&V Charge Time	100.101

A.2 Comments