

# V&V Reference Report

## L2 ASCDS Version : 7.6.8

Observation 3739 - L2 Version 001  
Chandra X-Ray Center

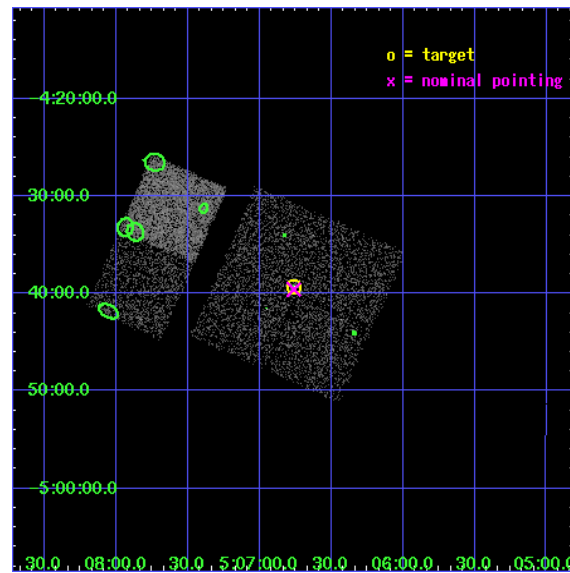
L2 Processing Date : Jul 20 2006

## Contents

<b>1</b>	<b>Front</b>	<b>2</b>
<b>2</b>	<b>OBI</b>	<b>3</b>
2.1	OBI . . . . .	3
2.1.1	Images . . . . .	3
2.1.2	Bias . . . . .	3
2.1.3	Parameters . . . . .	4
2.1.4	Events . . . . .	4
2.2	Compared Parameters . . . . .	5
2.3	Aspect . . . . .	6
2.4	Star Slots . . . . .	9
2.4.1	Slot 3 . . . . .	9
2.4.2	Slot 4 . . . . .	10
2.4.3	Slot 5 . . . . .	11
2.4.4	Slot 6 . . . . .	12
2.4.5	Slot 7 . . . . .	13
2.5	FID Slots . . . . .	14
2.5.1	Slot 0 . . . . .	14
2.5.2	Slot 1 . . . . .	15
2.5.3	Slot 2 . . . . .	16
<b>3</b>	<b>Point Sources</b>	<b>17</b>
<b>A</b>	<b>Summary</b>	<b>18</b>
A.1	Status . . . . .	18
A.2	Comments . . . . .	18

# 1 Front

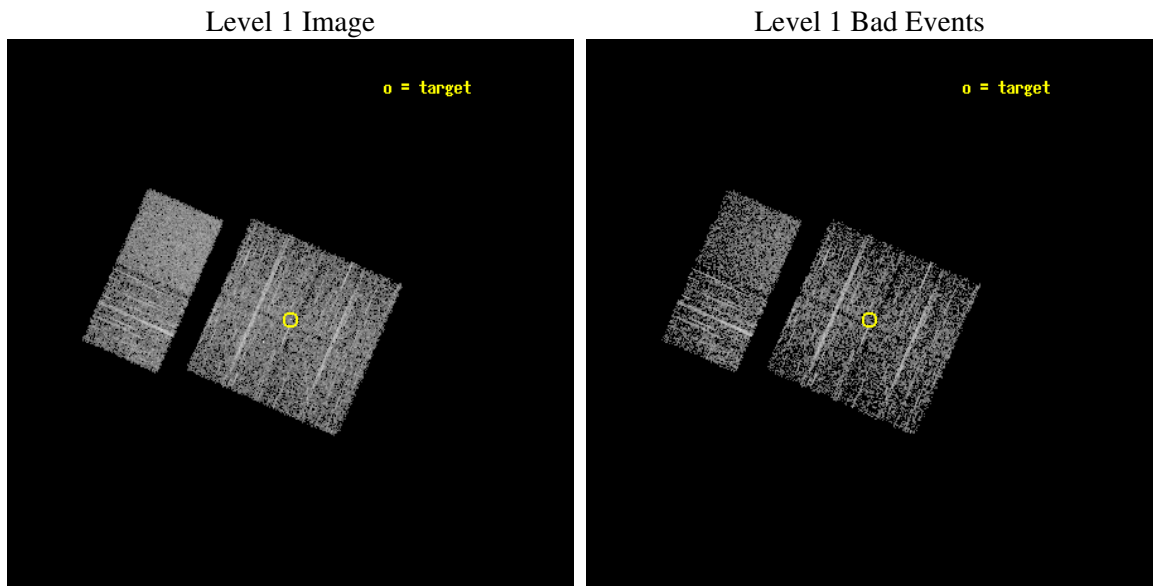
seq_num	200209
obs_id	3739
title	ON THE ORIGIN OF THE X-RAY EMISSION IN LATE B-TYPE STARS
observer	Dr. Nuria Huelamo
object	HD32964
dtcycle	0
cycle	P
ra_targ	76.69
dec_targ	-4.655167
ra_nom	76.690113731732
dec_nom	-4.6597672653798
roll_nom	293.81729444186
revision	2
ontime	2550.399990499
livetime	2518.1052901528
ontime0	2550.399990499
ontime1	2550.399990499
ontime2	2550.399990499
ontime3	2550.399990499
ontime6	2547.1590202153
ontime7	2550.399990499
l2events	16248



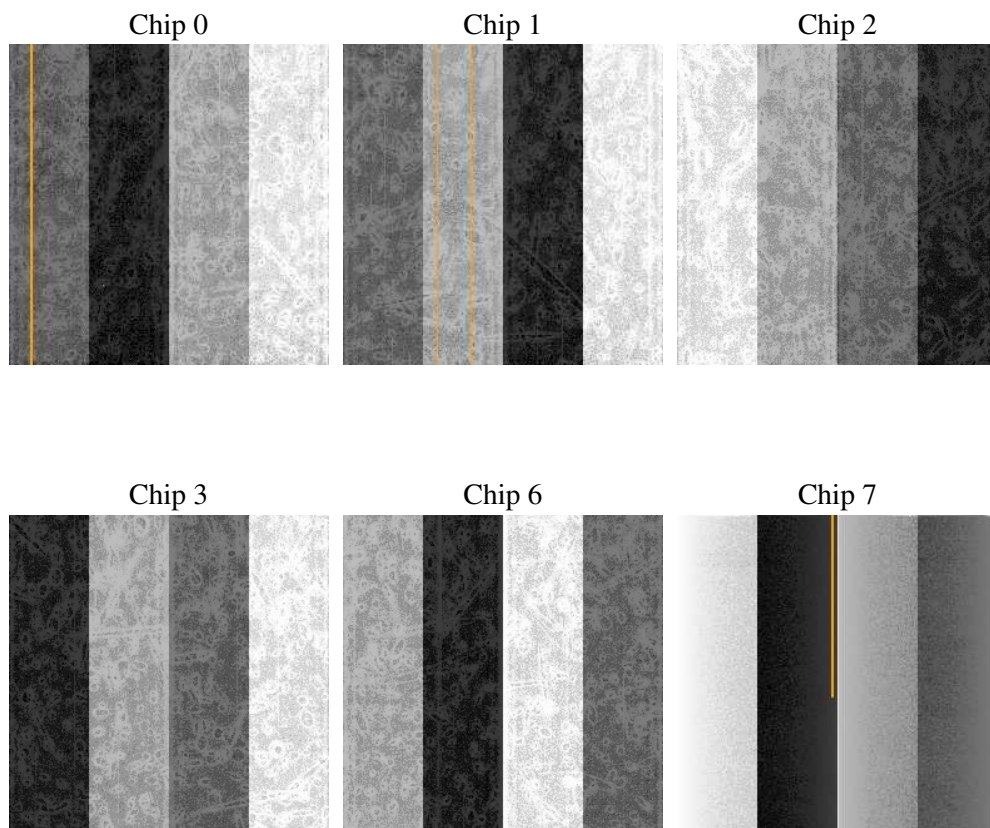
## 2 OBI

### 2.1 OBI

#### 2.1.1 Images



#### 2.1.2 Bias



### 2.1.3 Parameters

obi_num	0
ascdsver	7.6.8
caldsver	3.2.2
date	2006-07-20T13:09:00
revision	2

sched_exp_time	2400.000000
ontime	2664.1021319032
ontime0	2664.1021319032
ontime1	2664.1021319032
ontime2	2664.1021319032
ontime3	2664.1021319032
ontime6	2660.8611616194
ontime7	2664.1021319032
l1events	102539

### 2.1.4 Events

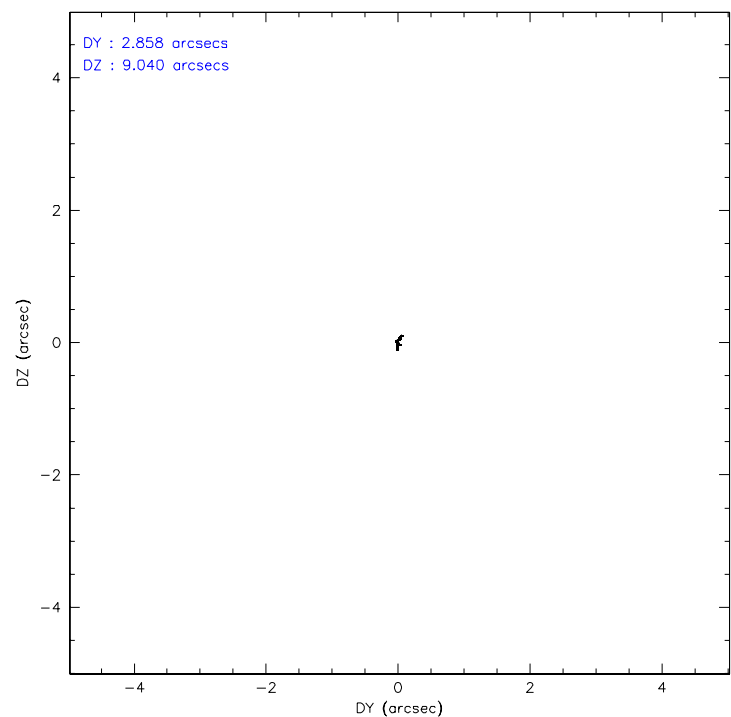
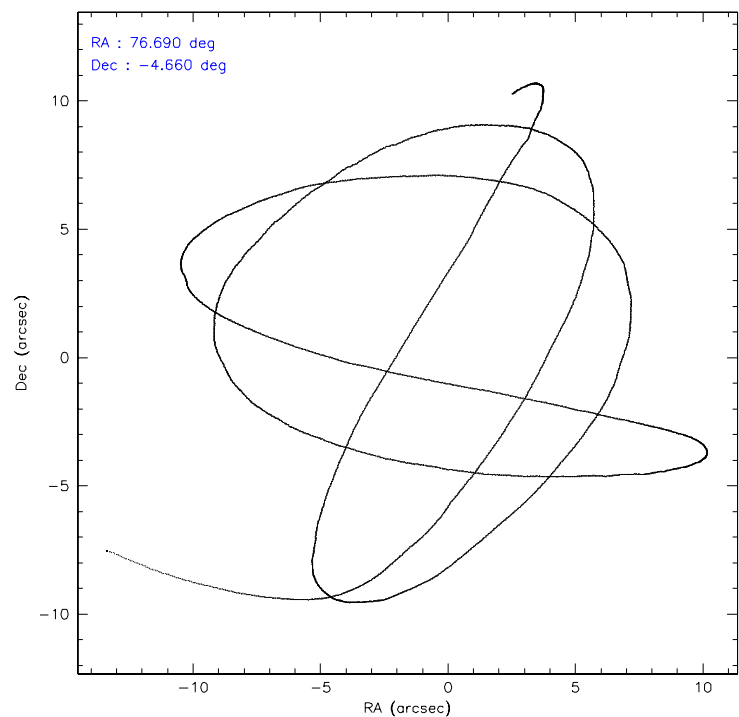
	ccd 0	ccd 1	ccd 2	ccd 3	ccd 6	ccd 7
level 1 events	14118	15727	16704	16289	18033	21668
rejected events	12245	13804	14760	14289	16115	13635
rejected %	86%	87%	88%	87%	89%	62%

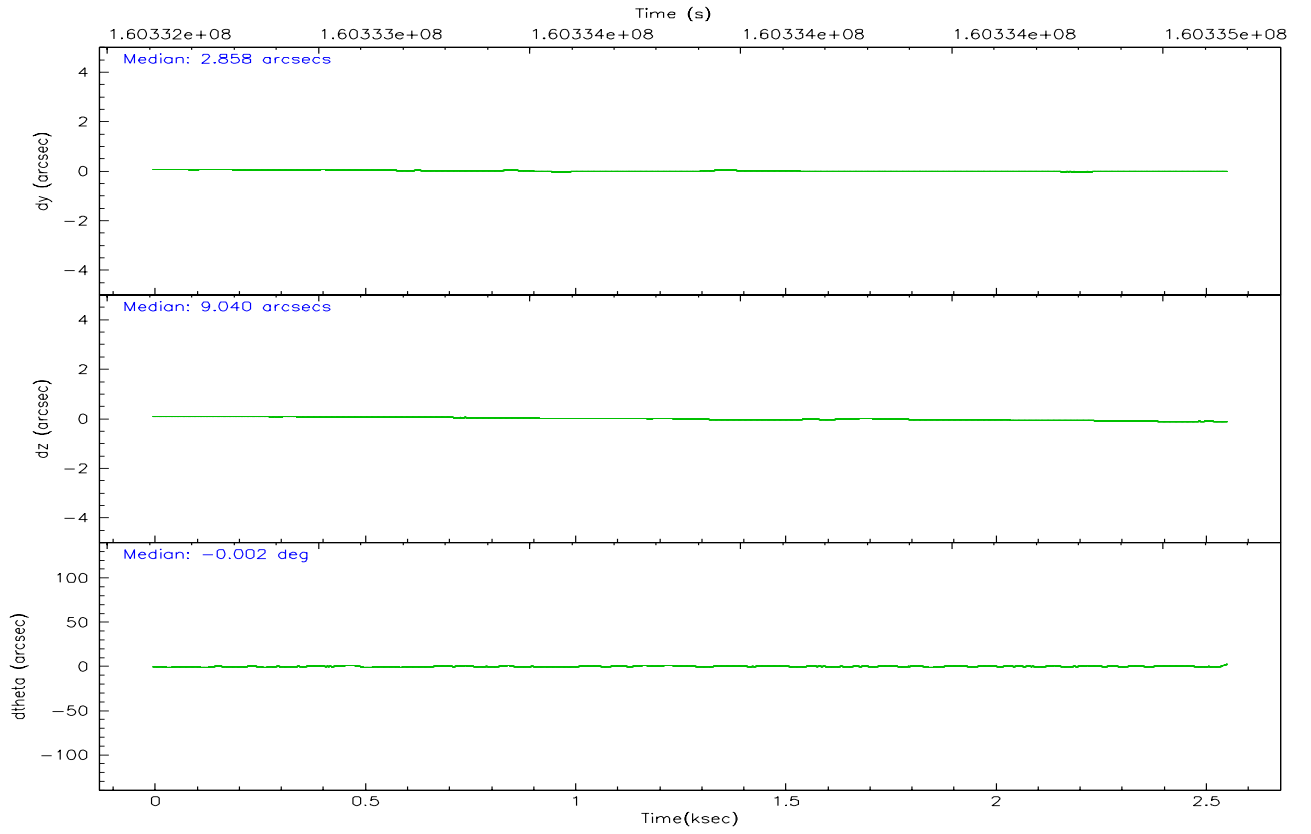
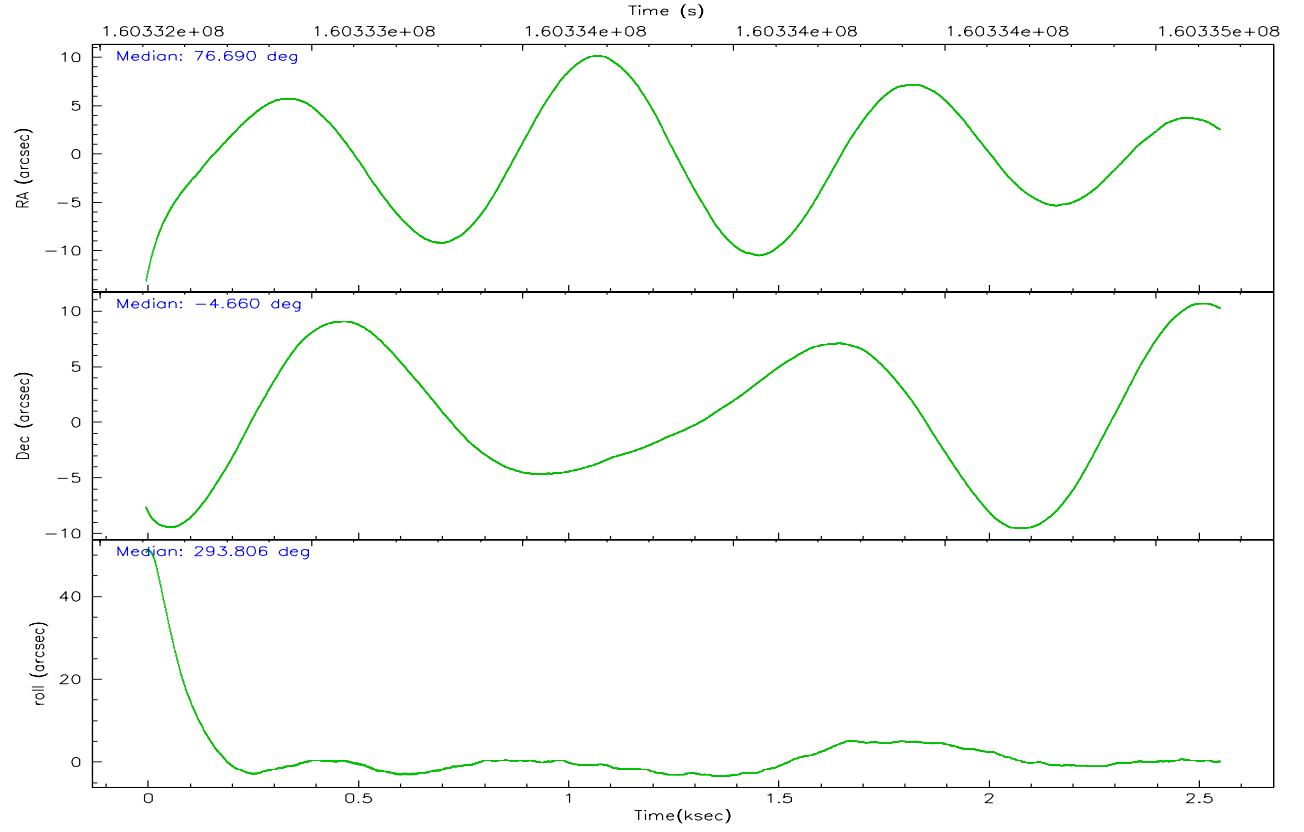
	ccd 0	ccd 1	ccd 2	ccd 3	ccd 6	ccd 7
grade 0 events	871	822	984	999	826	485
	6%	5%	5%	6%	4%	2%
grade 1 events	7	3	14	16	12	15
	0%	0%	0%	0%	0%	0%
grade 2 events	353	396	352	404	411	2066
	2%	2%	2%	2%	2%	9%
grade 3 events	201	220	183	187	182	413
	1%	1%	1%	1%	1%	1%
grade 4 events	185	197	196	172	176	419
	1%	1%	1%	1%	0%	1%
grade 5 events	616	712	625	717	776	1438
	4%	4%	3%	4%	4%	6%
grade 6 events	342	379	316	325	413	4990
	2%	2%	1%	1%	2%	23%
grade 7 events	11543	12998	14034	13469	15237	11842
	81%	82%	84%	82%	84%	54%

## 2.2 Compared Parameters

Parameter	Planned	Actual	Parameter	Planned	Actual
Instrument	ACIS	ACIS	Obspar format version number	6	6
Detector	ACIS-012367	ACIS-012367	Obspar file type	PREDICTED	ACTUAL
Grating	NONE	NONE	Obspar update status	NONE	UPDATED
Data mode	FAINT	FAINT	On-chip summing requested	N	N
Observation mode	POINTING	POINTING	Subarray requested	NONE	NONE
Pointing RA	76.667831	76.6901137317316	Alternating exposures requested	N	N
Pointing Dec	-4.643724	-4.659767265379784	Primary exposure time	0.000000	3.2
Pointing Roll	293.606547	293.8172944418627			
SIM focus pos (mm)	-0.782348	-0.7809083437167272			
SIM defocus (mm)	0	0.001439871863259334			
SIM translation stage pos (mm)	-233.592463	-233.5874344608287			
SIM translation stage offset (mm)	0	-0.005018542100998502			
Observation start time	160332759.184000	160331649.81215			
Observation start date	2003-01-30T16:51:35	2003-01-30T16:34:09			
Observation end time	160335159.184000	160335760.57482			
Observation end date	2003-01-30T17:31:35	2003-01-30T17:42:40			
Read mode	TIMED	TIMED			

2.3 Aspect





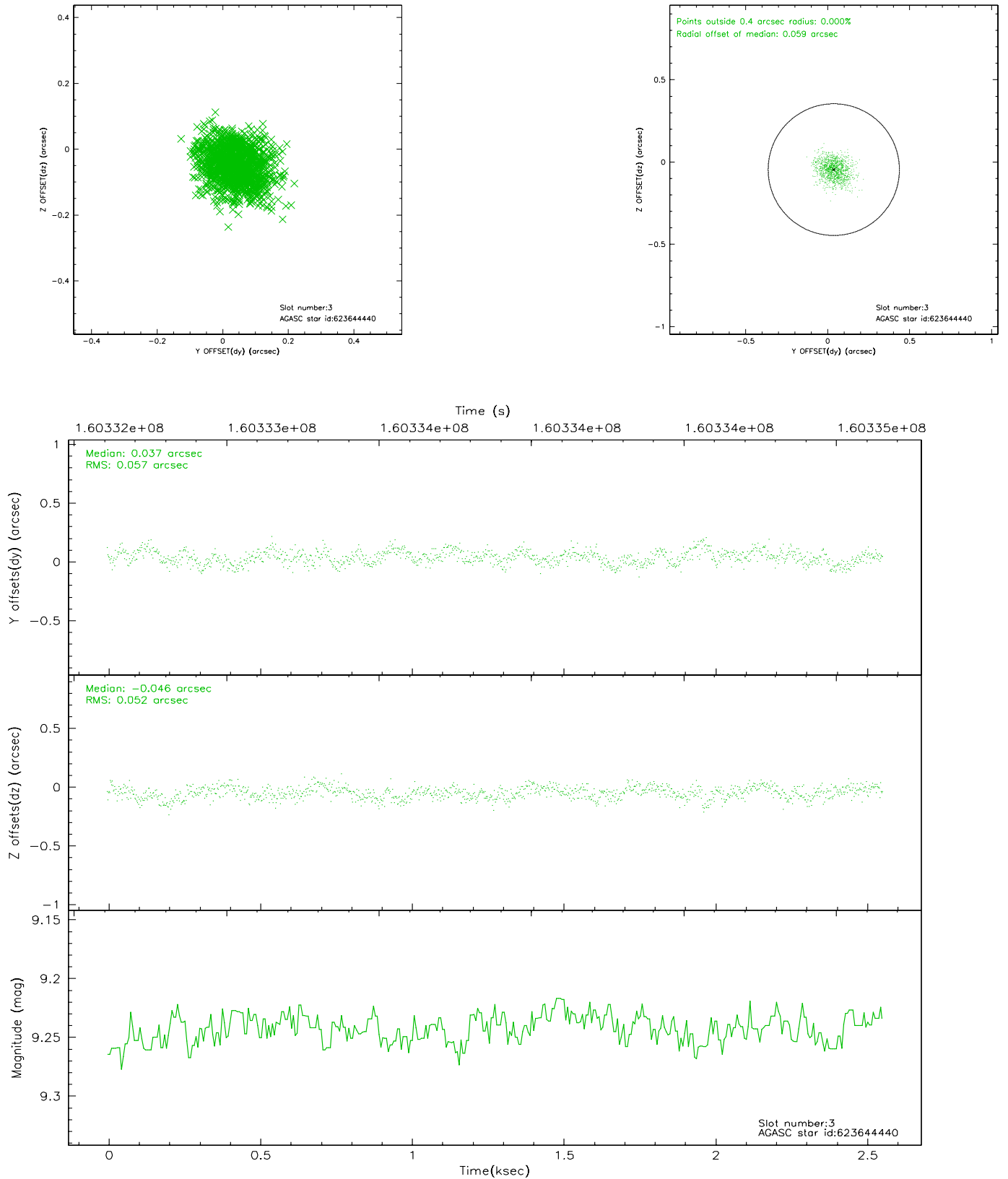
### Slot Statistics

slot	status	id	mag	n_pts	med_dy	med_dz	dr1	dr2	ra	dec	mean_y	mean_z
0	FID	ACIS-I-1	7.25	624	-0.049	0.088	0.006	0.009	0.000000	0.000000	936.88	-832.39
1	FID	ACIS-I-5	7.24	624	-0.041	0.016	0.006	0.009	0.000000	0.000000	-1809.82	1063.74
2	FID	ACIS-I-6	7.26	624	-0.001	-0.034	0.006	0.011	0.000000	0.000000	399.72	1711.08
3	GUIDE	623644440	9.24	1247	0.037	-0.046	0.082	0.130	76.279011	-5.198816	1274.20	-2077.62
4	GUIDE	623649896	9.34	1247	-0.108	-0.067	0.091	0.148	76.105843	-4.972876	281.20	-2323.50
5	GUIDE	623651424	7.47	1248	0.141	0.009	0.064	0.106	76.730870	-5.165616	1813.15	-546.76
6	GUIDE	623780296	9.04	1248	-0.034	0.017	0.126	0.204	77.087071	-4.091479	-1217.03	2174.72
7	GUIDE	623783240	9.39	1247	-0.048	0.088	0.115	0.185	77.224845	-4.484939	276.51	2062.21

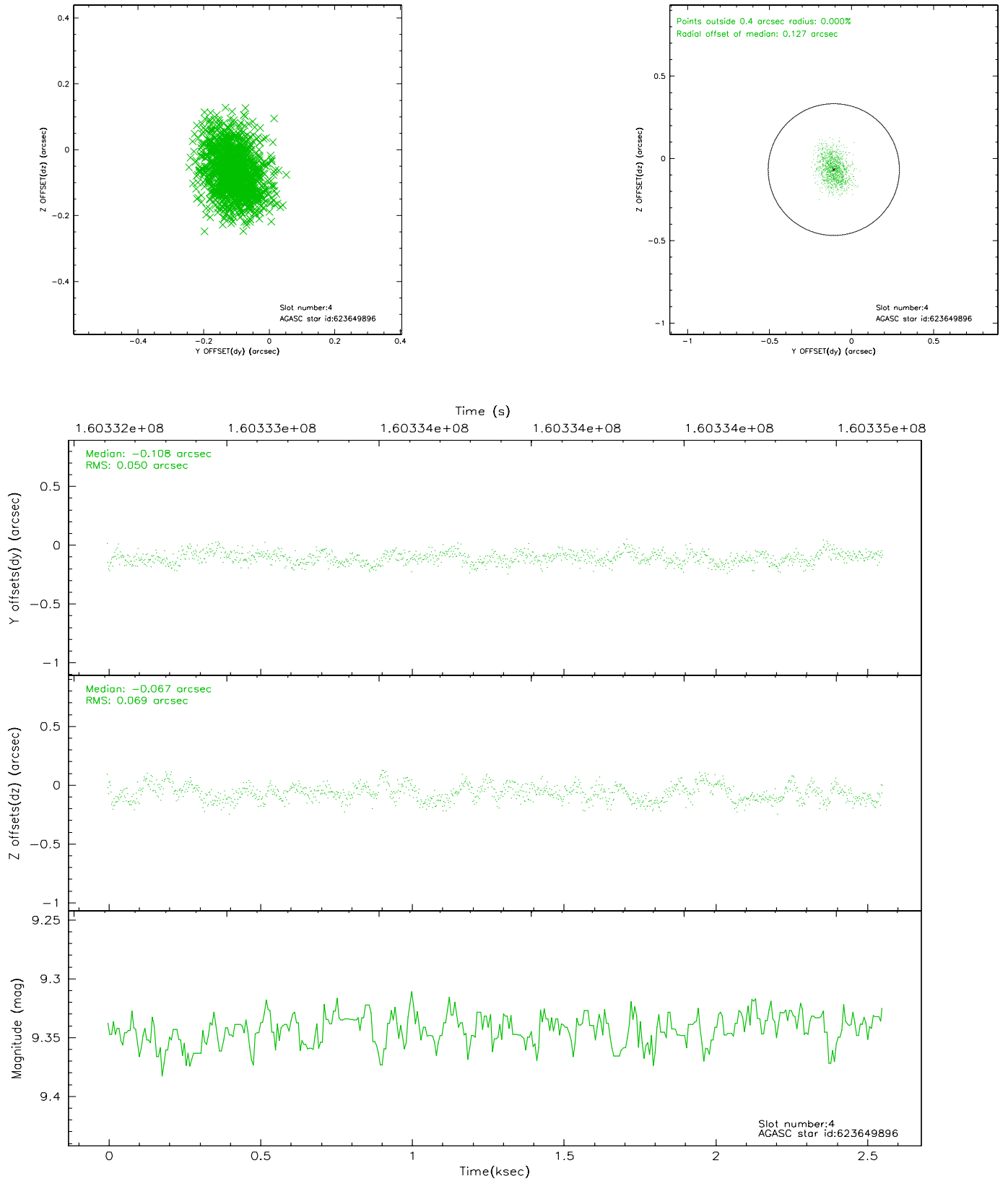


## 2.4 Star Slots

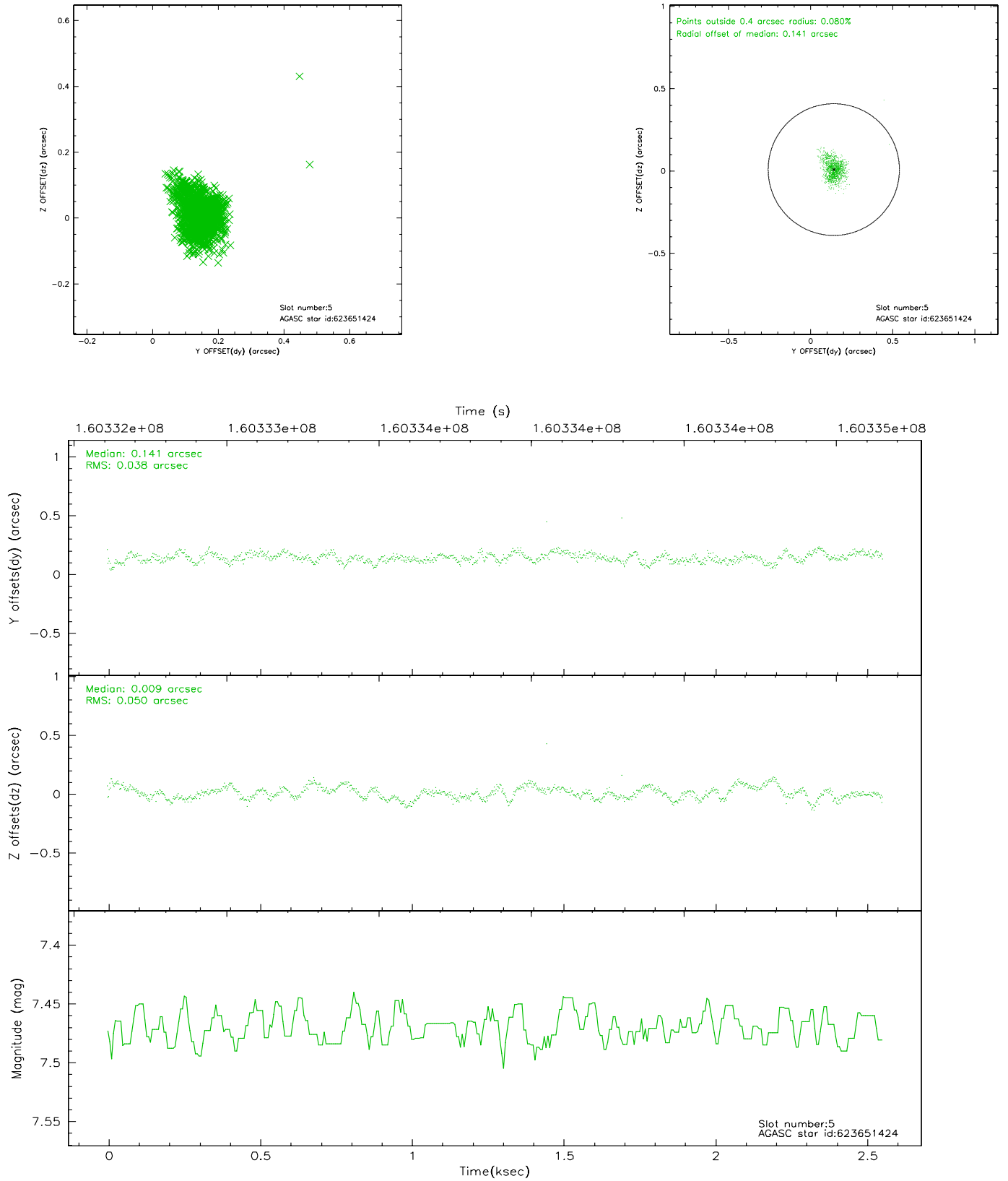
### 2.4.1 Slot 3



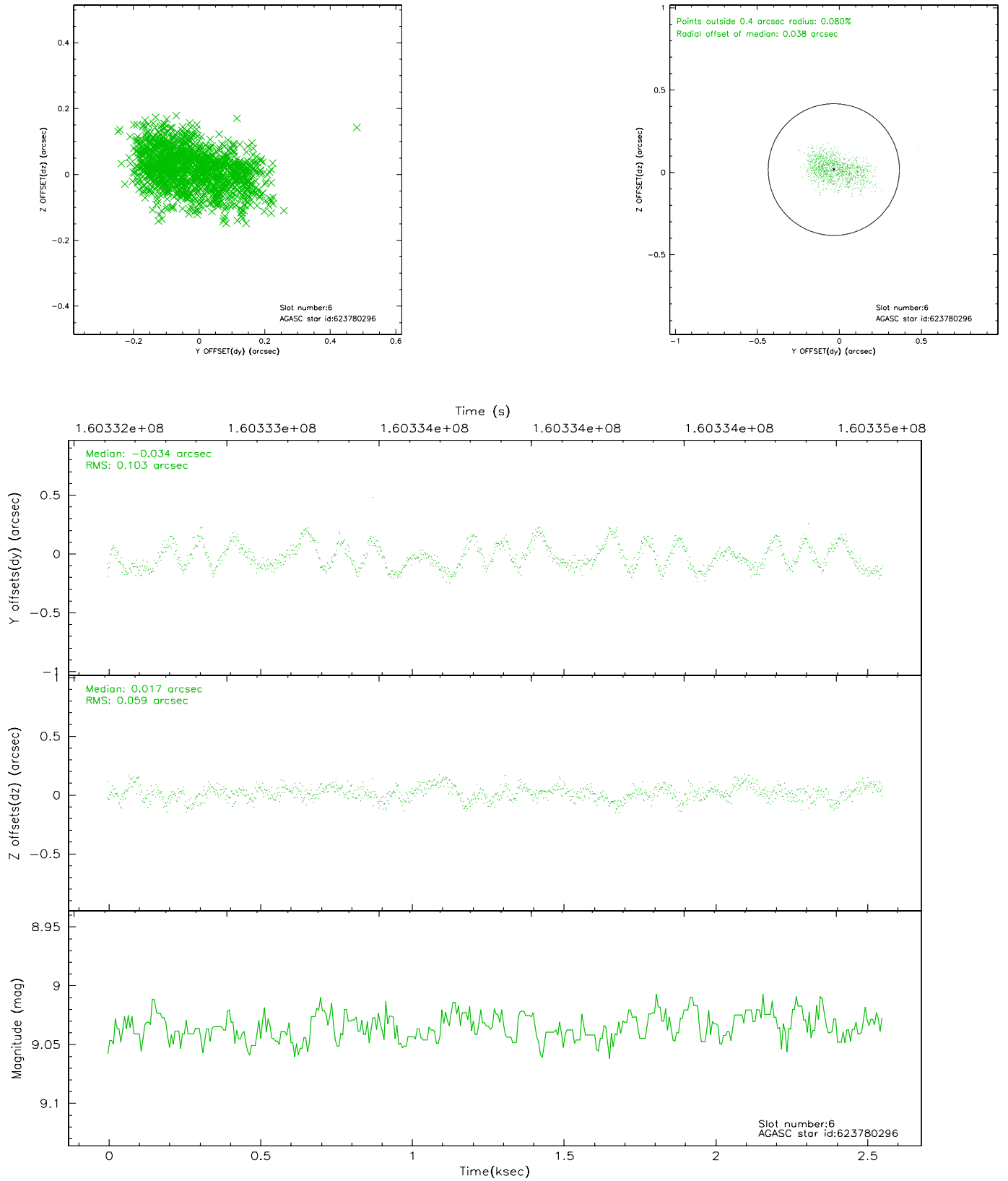
## 2.4.2 Slot 4



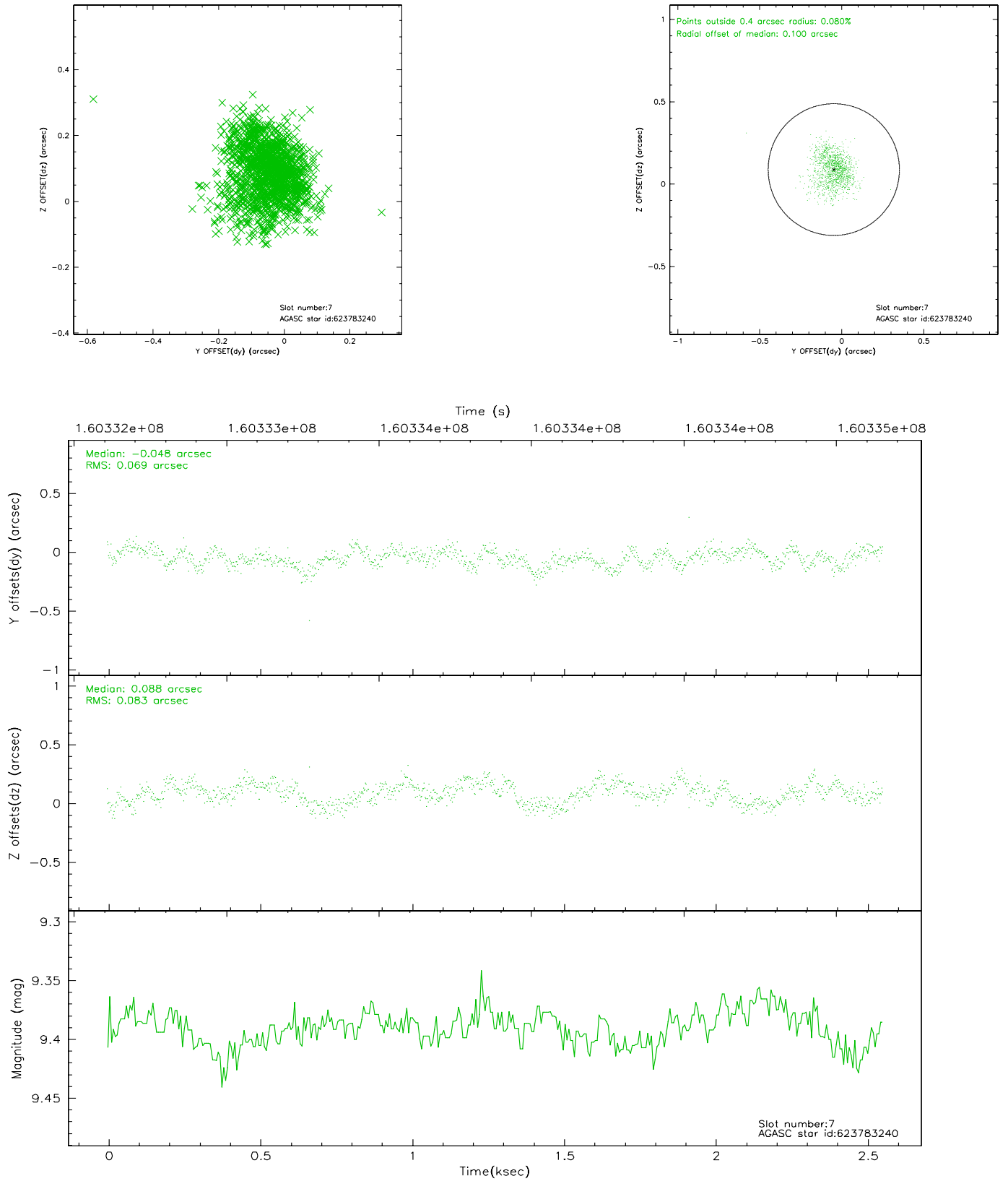
### 2.4.3 Slot 5



## 2.4.4 Slot 6

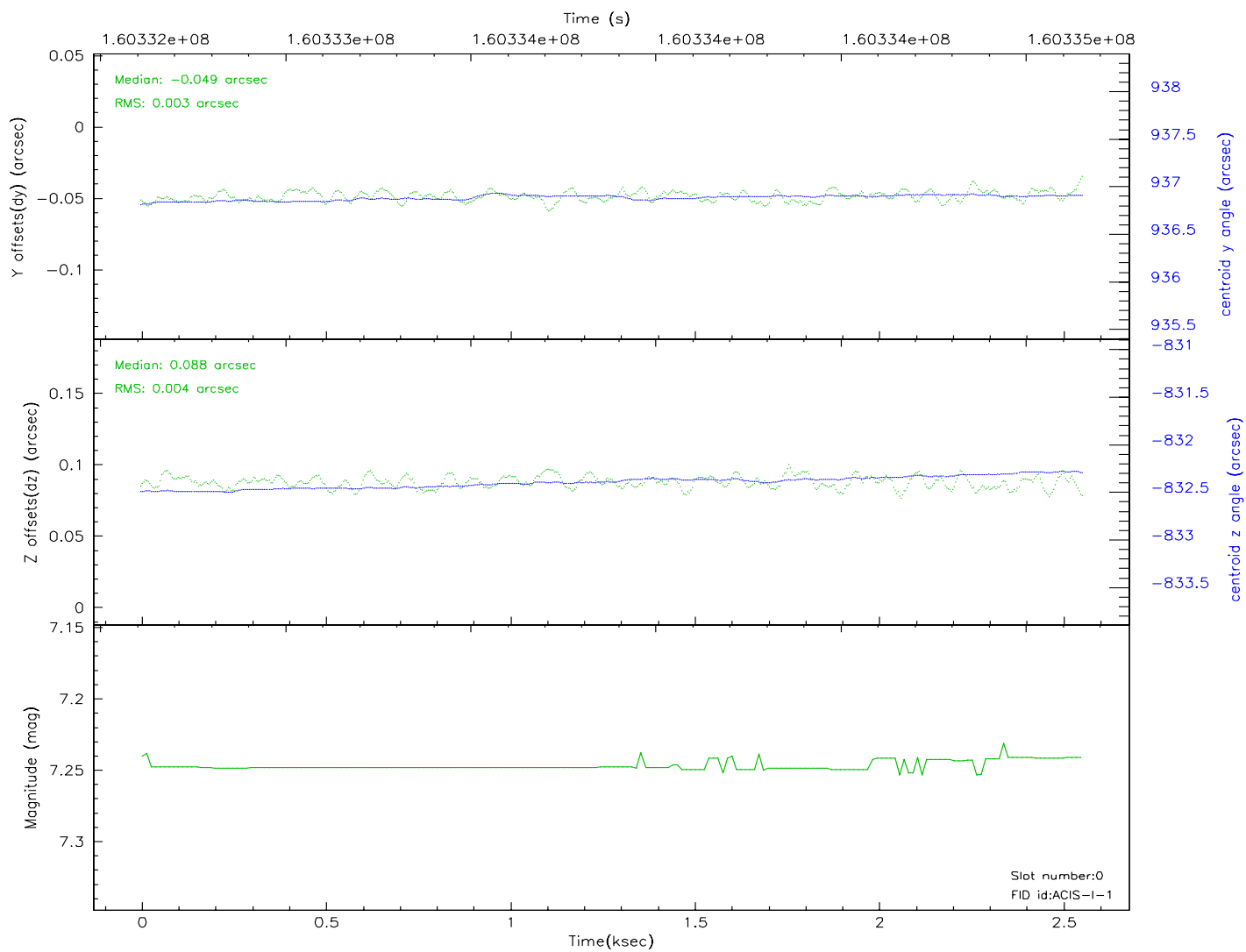
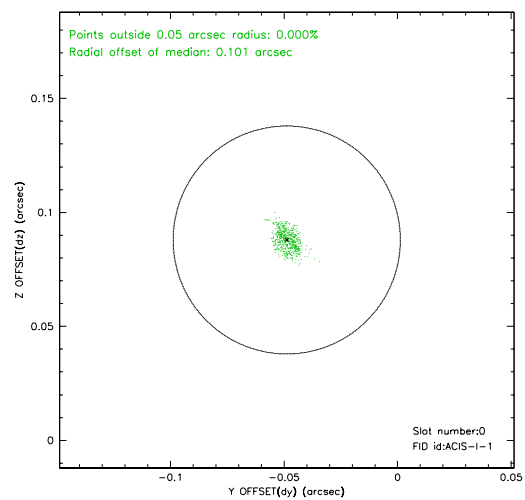
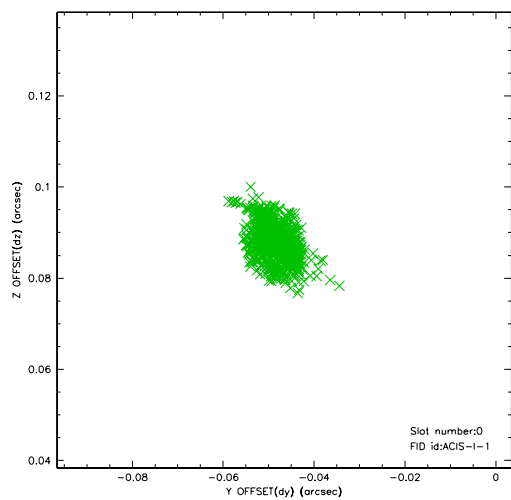


## 2.4.5 Slot 7

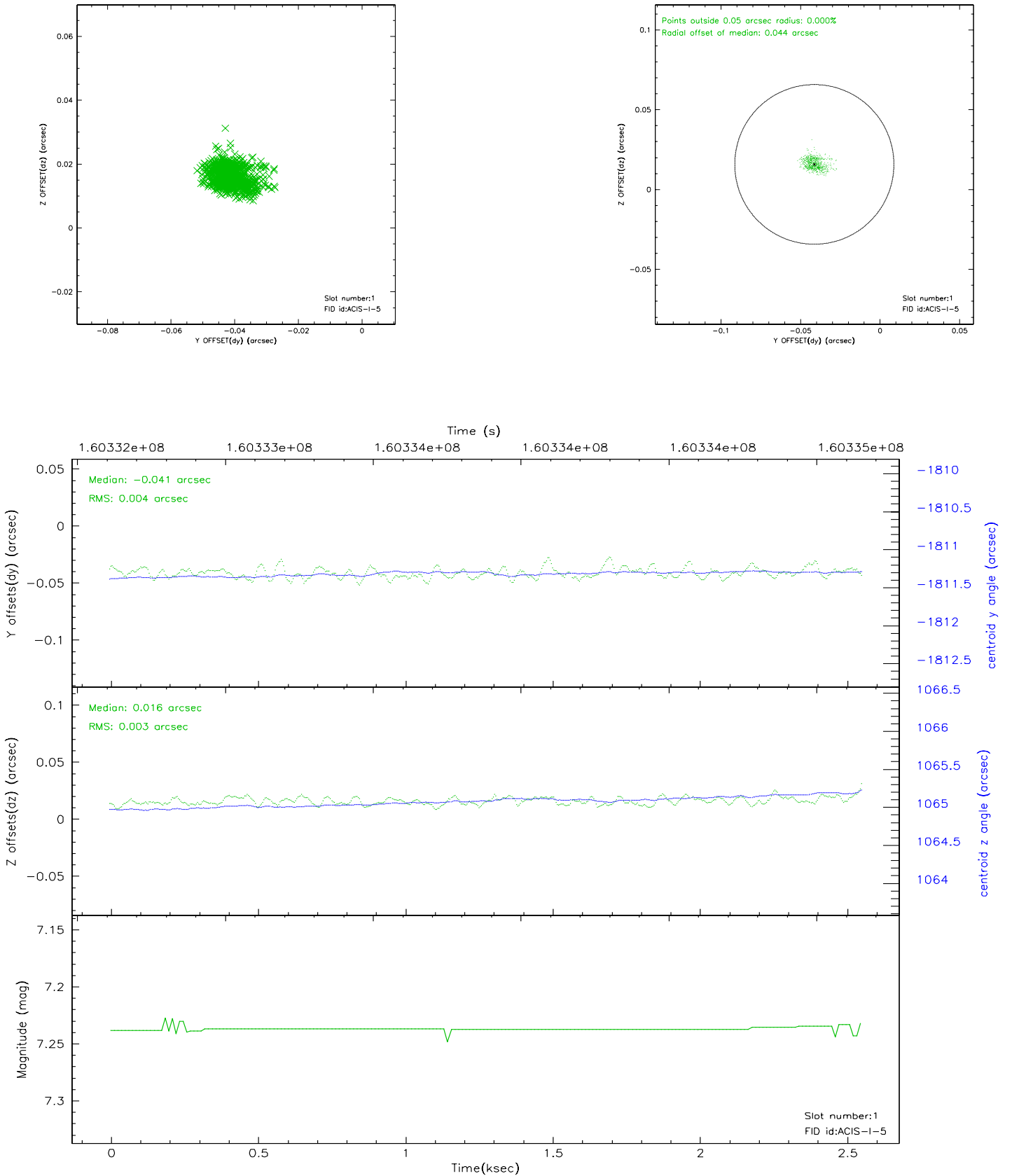


## 2.5 FID Slots

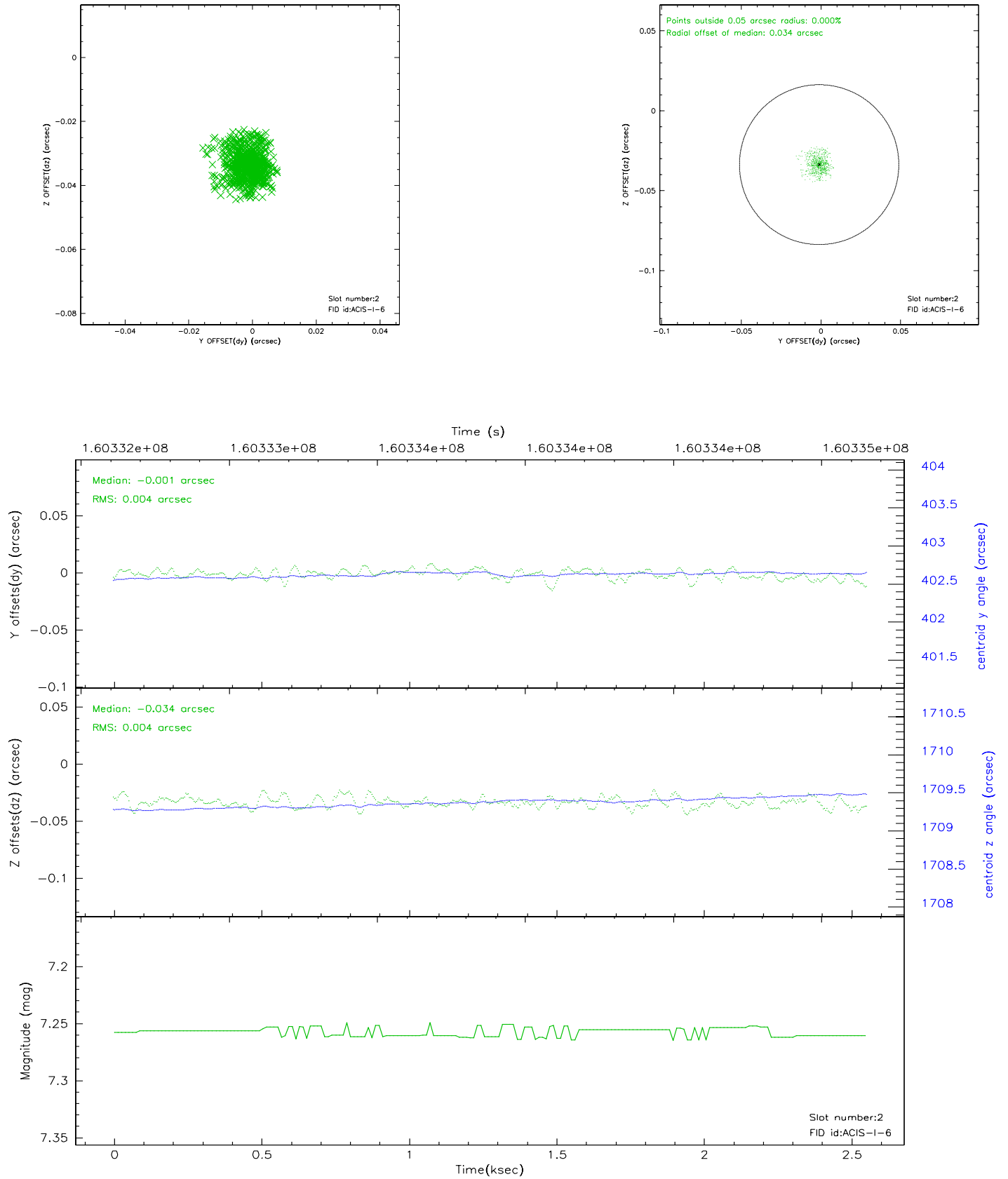
### 2.5.1 Slot 0



## 2.5.2 Slot 1

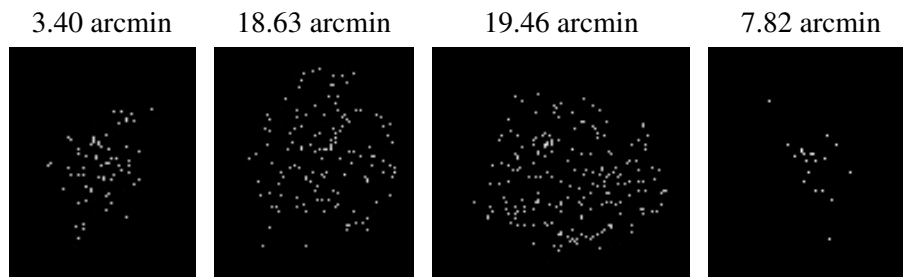


### 2.5.3 Slot 2





### 3 Point Sources



## A Summary

### A.1 Status

V&V Scientist	Beth Sundheim
V&V Date (YYYY-MM-DD)	2006.07.20
V&V Edition	1
V&V Disposition and Status	OK
V&V Charge Time	2.55

### A.2 Comments