

# V&V Reference Report

## L2 ASCDS Version : 7.6.8

Observation 3730 - L2 Version 001  
Chandra X-Ray Center

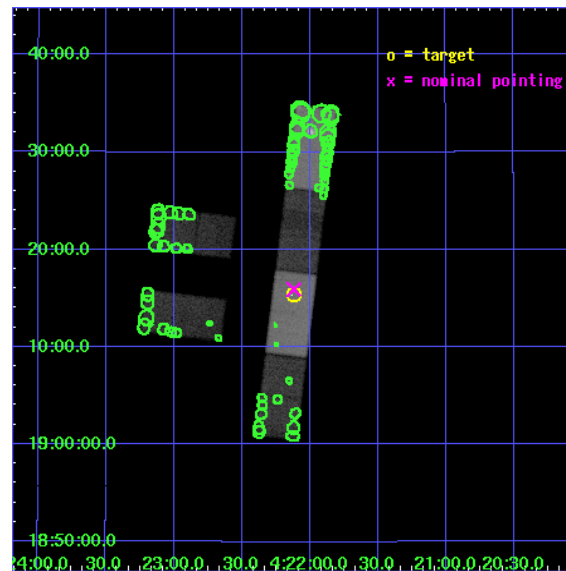
L2 Processing Date : Jun 29 2006

## Contents

<b>1</b>	<b>Front</b>	<b>2</b>
<b>2</b>	<b>OBI</b>	<b>3</b>
2.1	OBI . . . . .	3
2.1.1	Images . . . . .	3
2.1.2	Bias . . . . .	3
2.1.3	Parameters . . . . .	4
2.1.4	Events . . . . .	4
2.2	Compared Parameters . . . . .	5
2.3	Aspect . . . . .	6
2.4	Star Slots . . . . .	9
2.4.1	Slot 3 . . . . .	9
2.4.2	Slot 4 . . . . .	10
2.4.3	Slot 5 . . . . .	11
2.4.4	Slot 6 . . . . .	12
2.4.5	Slot 7 . . . . .	13
2.5	FID Slots . . . . .	14
2.5.1	Slot 0 . . . . .	14
2.5.2	Slot 1 . . . . .	15
2.5.3	Slot 2 . . . . .	16
<b>3</b>	<b>Point Sources</b>	<b>17</b>
<b>A</b>	<b>Summary</b>	<b>18</b>
A.1	Status . . . . .	18
A.2	Comments . . . . .	18

# 1 Front

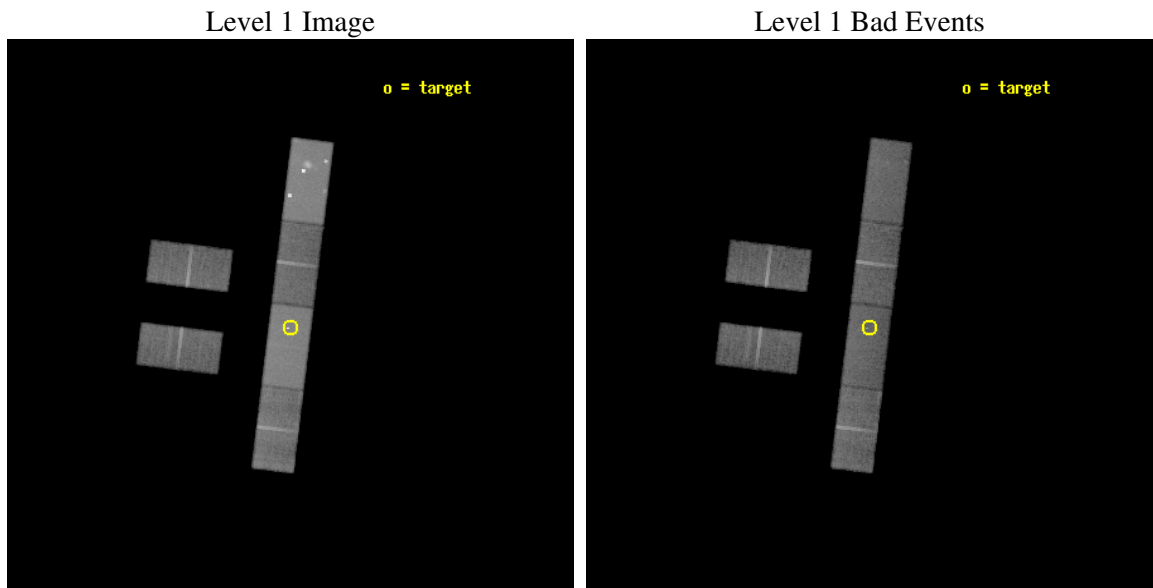
seq_num	200200
obs_id	3730
title	MORPHOLOGY OF THE X-RAY EMISSION FROM PROTOSTELLAR JETS
observer	Dr. Fabio Favata
object	HH 355F
dtcycle	0
cycle	P
ra_targ	65.529167
dec_targ	19.255556
ra_nom	65.529718541013
dec_nom	19.26517913017
roll_nom	97.033510345077
revision	2
ontime	31753.800210297
livetime	31045.952493447
ontime2	31753.800210297
ontime3	31753.800210297
ontime5	31753.800210297
ontime6	31753.800210297
ontime7	31753.800210297
ontime8	31753.800210297
l2events	336301



## 2 OBI

### 2.1 OBI

#### 2.1.1 Images

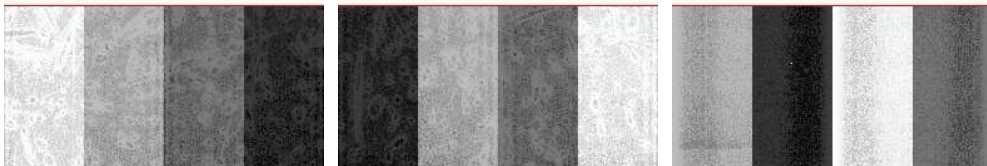


#### 2.1.2 Bias

Chip 2

Chip 3

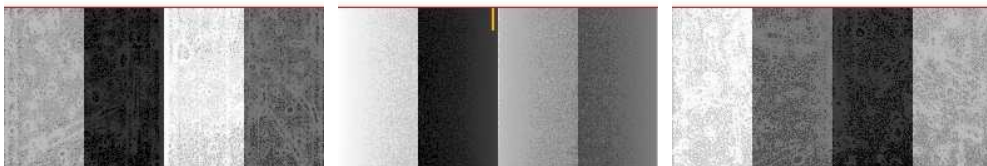
Chip 5



Chip 6

Chip 7

Chip 8



### 2.1.3 Parameters

obi_num	0
ascdsver	7.6.8
caldsver	3.2.2
date	2006-06-29T10:52:11
revision	2

sched_exp_time	31573.348000
ontime	32468.278686404
ontime2	32468.278686404
ontime3	32468.278686404
ontime5	32468.278686404
ontime6	32468.278686404
ontime7	32468.278686404
ontime8	32468.278686404
l1events	1017216

### 2.1.4 Events

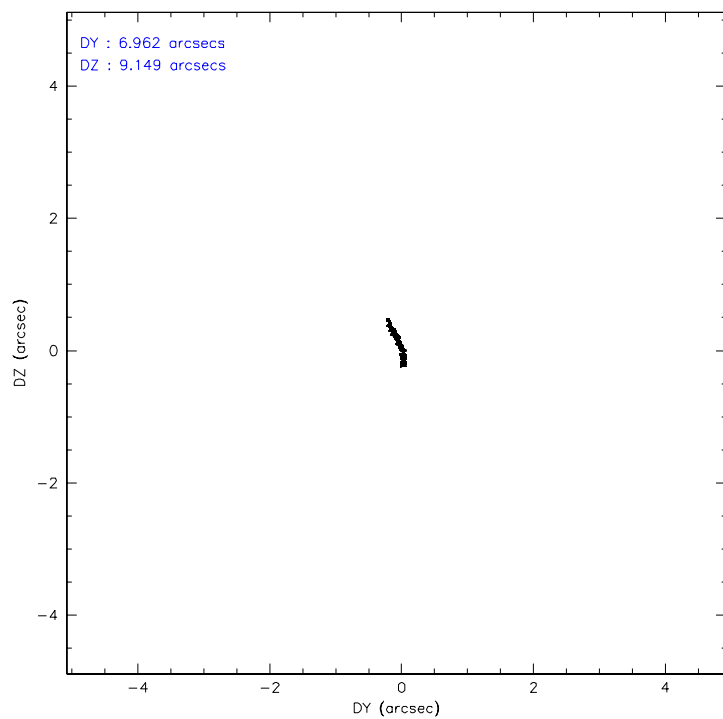
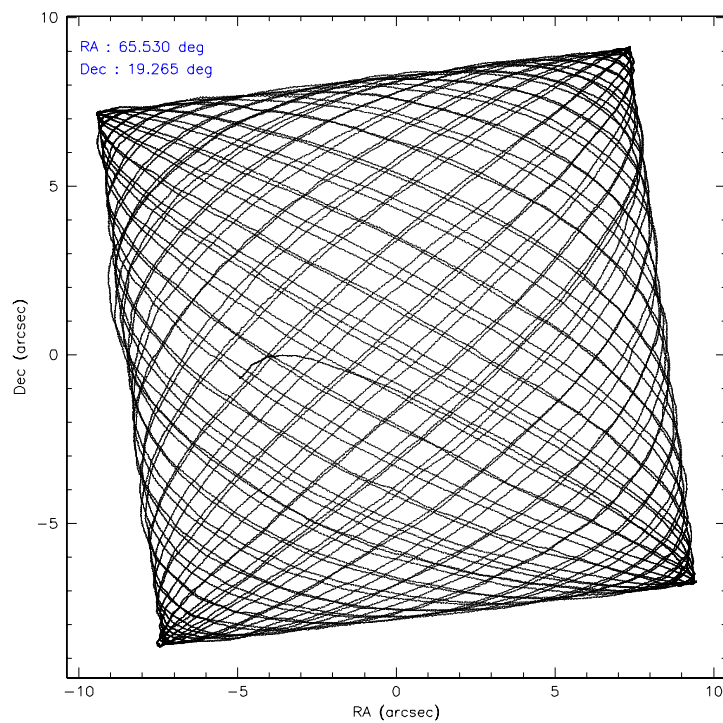
	ccd 2	ccd 3	ccd 5	ccd 6	ccd 7	ccd 8
level 1 events	124771	118648	265187	126262	223192	159156
rejected events	104802	98974	102662	100776	97676	118787
rejected %	83%	83%	38%	79%	43%	74%

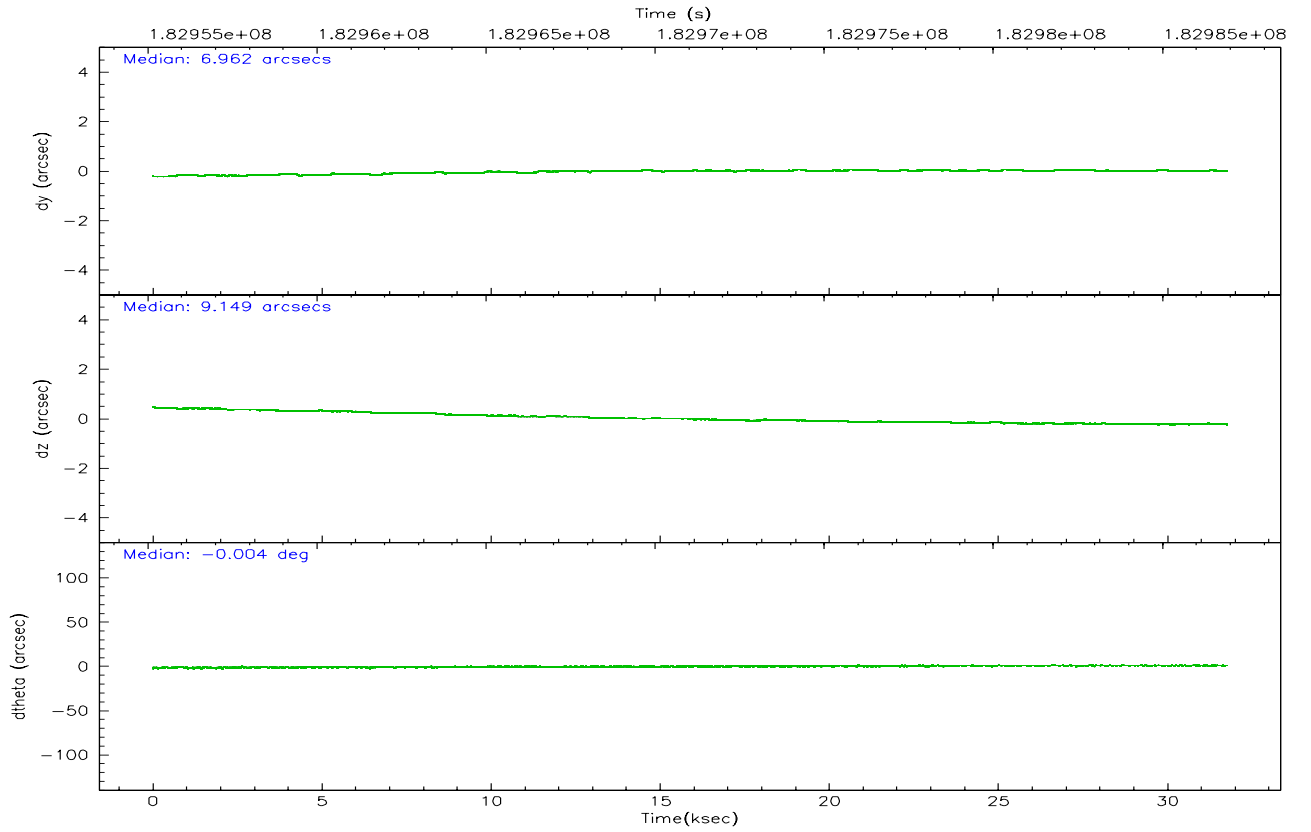
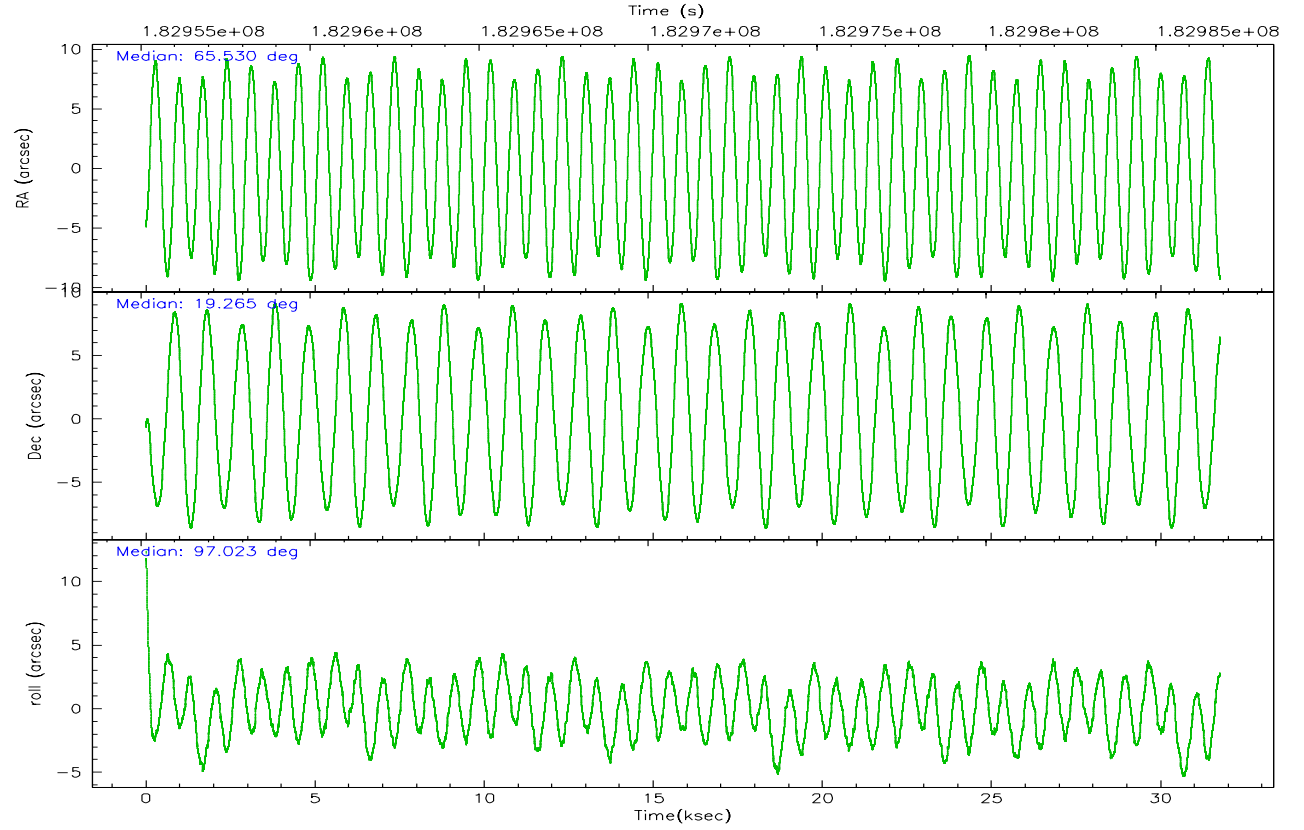
	ccd 2	ccd 3	ccd 5	ccd 6	ccd 7	ccd 8
grade 0 events	10287	10295	40997	14034	12182	17764
	8%	8%	15%	11%	5%	11%
grade 1 events	60	60	173	59	169	101
	0%	0%	0%	0%	0%	0%
grade 2 events	3688	3595	44953	4796	28478	8022
	2%	3%	16%	3%	12%	5%
grade 3 events	1646	1733	5001	1793	8018	3465
	1%	1%	1%	1%	3%	2%
grade 4 events	1773	1684	4675	1771	7698	3373
	1%	1%	1%	1%	3%	2%
grade 5 events	4352	4753	8946	4843	10898	6391
	3%	4%	3%	3%	4%	4%
grade 6 events	2875	2631	68969	3378	70499	8441
	2%	2%	26%	2%	31%	5%
grade 7 events	100090	93897	91473	95588	85250	111599
	80%	79%	34%	75%	38%	70%

## 2.2 Compared Parameters

Parameter	Planned	Actual	Parameter	Planned	Actual
Instrument	ACIS	ACIS	Obspar format version number	6	6
Detector	ACIS-235678	ACIS-235678	Obspar file type	PREDICTED	ACTUAL
Grating	NONE	NONE	Obspar update status	NONE	UPDATED
Data mode	FAINT	FAINT	On-chip summing requested	N	N
Observation mode	POINTING	POINTING	Subarray requested	1/2	1/2
Pointing RA	65.547398	65.52971854101311	Subarray start row	0	257
Pointing Dec	19.243695	19.26517913016972	Subarray row count	1024	512
Pointing Roll	96.871051	97.03351034507747	Alternating exposures requested	N	N
SIM focus pos (mm)	-0.684267	-0.6828225247311905	Primary exposure time	0.000000	1.8
SIM defocus (mm)	0	0.001444936568705701			
SIM translation stage pos (mm)	-190.132523	-190.1400660498719			
SIM translation stage offset (mm)	0	0.00754346686406393			
Observation start time	182955341.184000	182954135.69793			
Observation start date	2003-10-19T12:54:37	2003-10-19T12:35:35			
Observation end time	182986914.184000	182987228.84935			
Observation end date	2003-10-19T21:40:50	2003-10-19T21:47:08			
Read mode	TIMED	TIMED			

## 2.3 Aspect





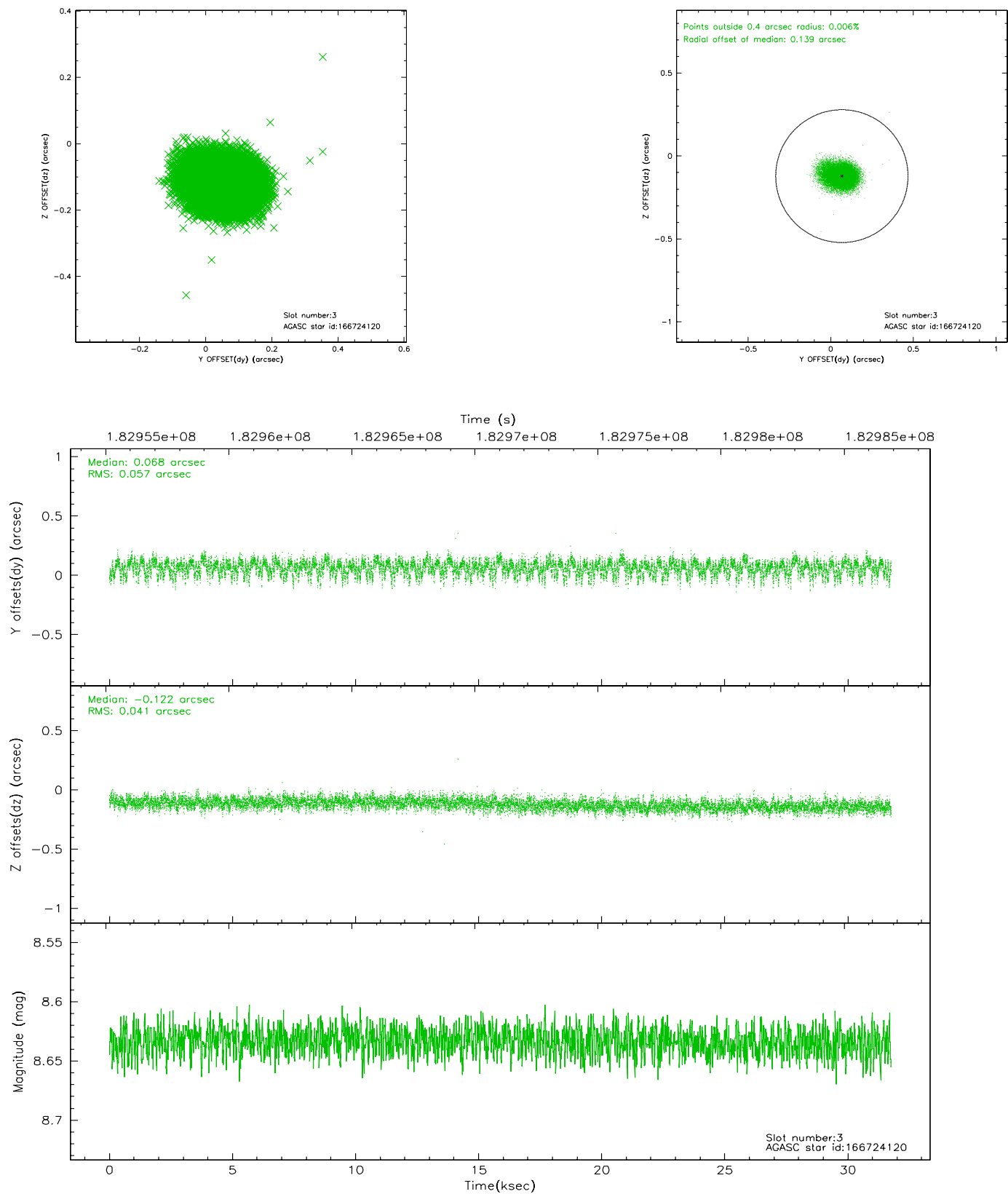
### Slot Statistics

slot	status	id	mag	n_pts	med_dy	med_dz	dr1	dr2	ra	dec	mean_y	mean_z
0	FID	ACIS-S-2	7.10	7746	-0.026	-0.009	0.014	0.019	0.000000	0.000000	-759.69	-1730.42
1	FID	ACIS-S-4	7.20	7745	0.020	0.016	0.018	0.023	0.000000	0.000000	2153.59	178.04
2	FID	ACIS-S-5	7.23	7746	-0.023	0.004	0.010	0.015	0.000000	0.000000	-1812.47	171.74
3	GUIDE	166724120	8.63	15493	0.068	-0.122	0.074	0.123	64.819607	19.724565	2018.80	2240.90
4	GUIDE	166727096	7.59	15492	0.022	-0.213	0.059	0.093	65.054029	19.233473	166.35	1668.50
5	GUIDE	166857688	9.11	15482	0.154	0.066	0.096	0.161	66.140840	19.967901	2352.46	-2305.59
6	GUIDE	166858280	9.21	15487	0.022	0.145	0.076	0.126	66.029038	19.654018	1274.27	-1798.17
7	GUIDE	166860736	9.28	15482	-0.260	0.122	0.098	0.163	66.100337	19.958939	2336.05	-2165.82

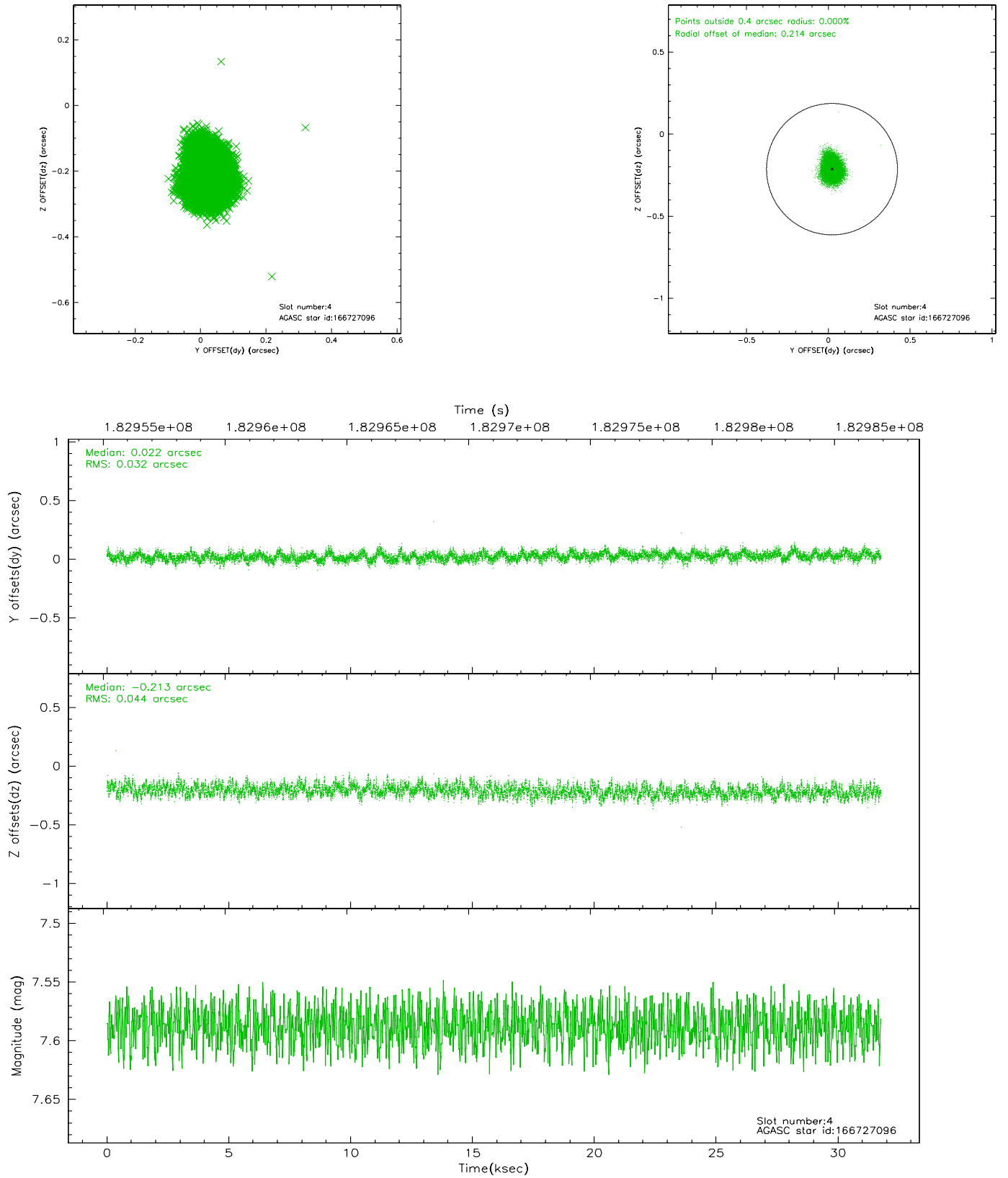


## 2.4 Star Slots

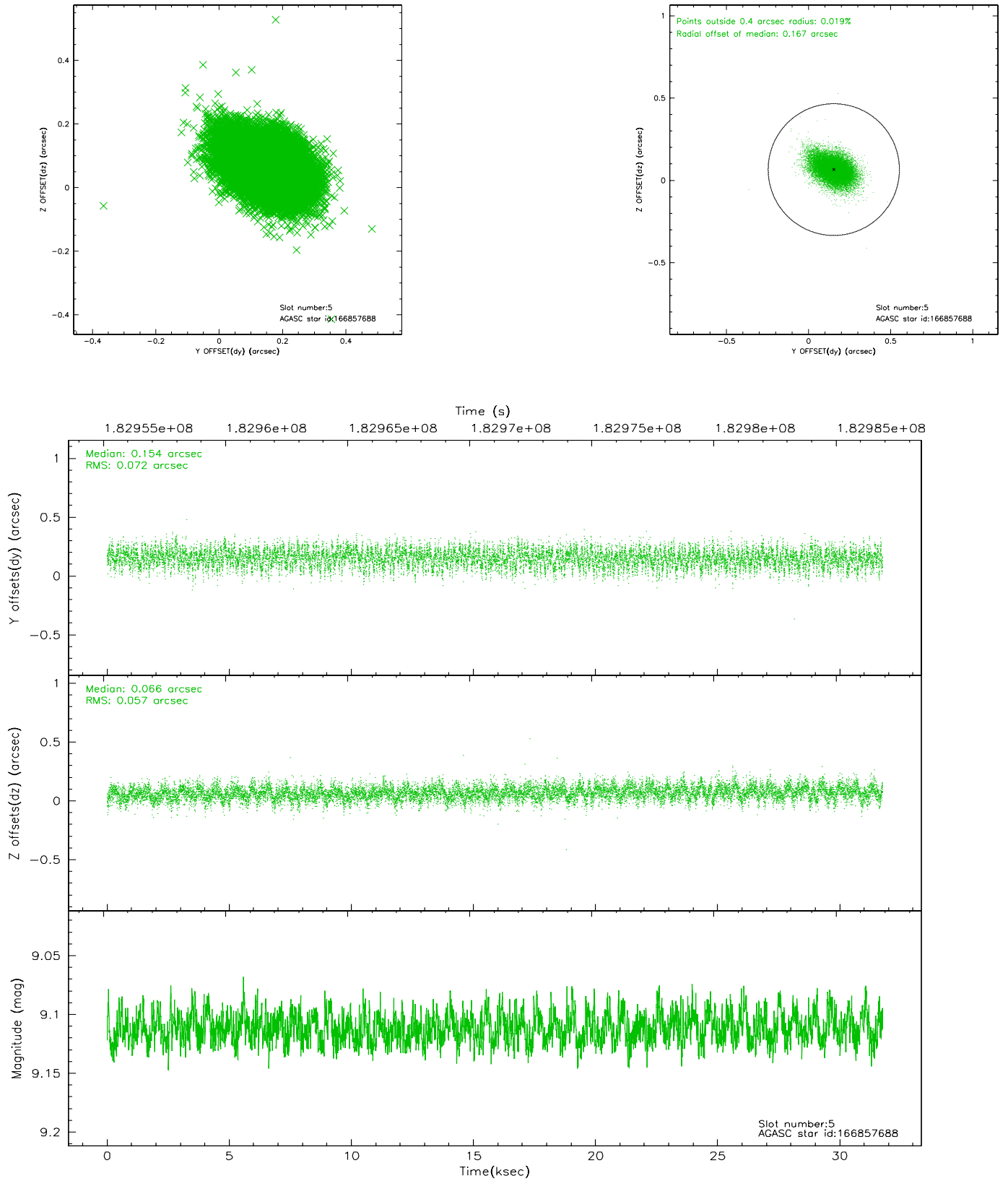
### 2.4.1 Slot 3



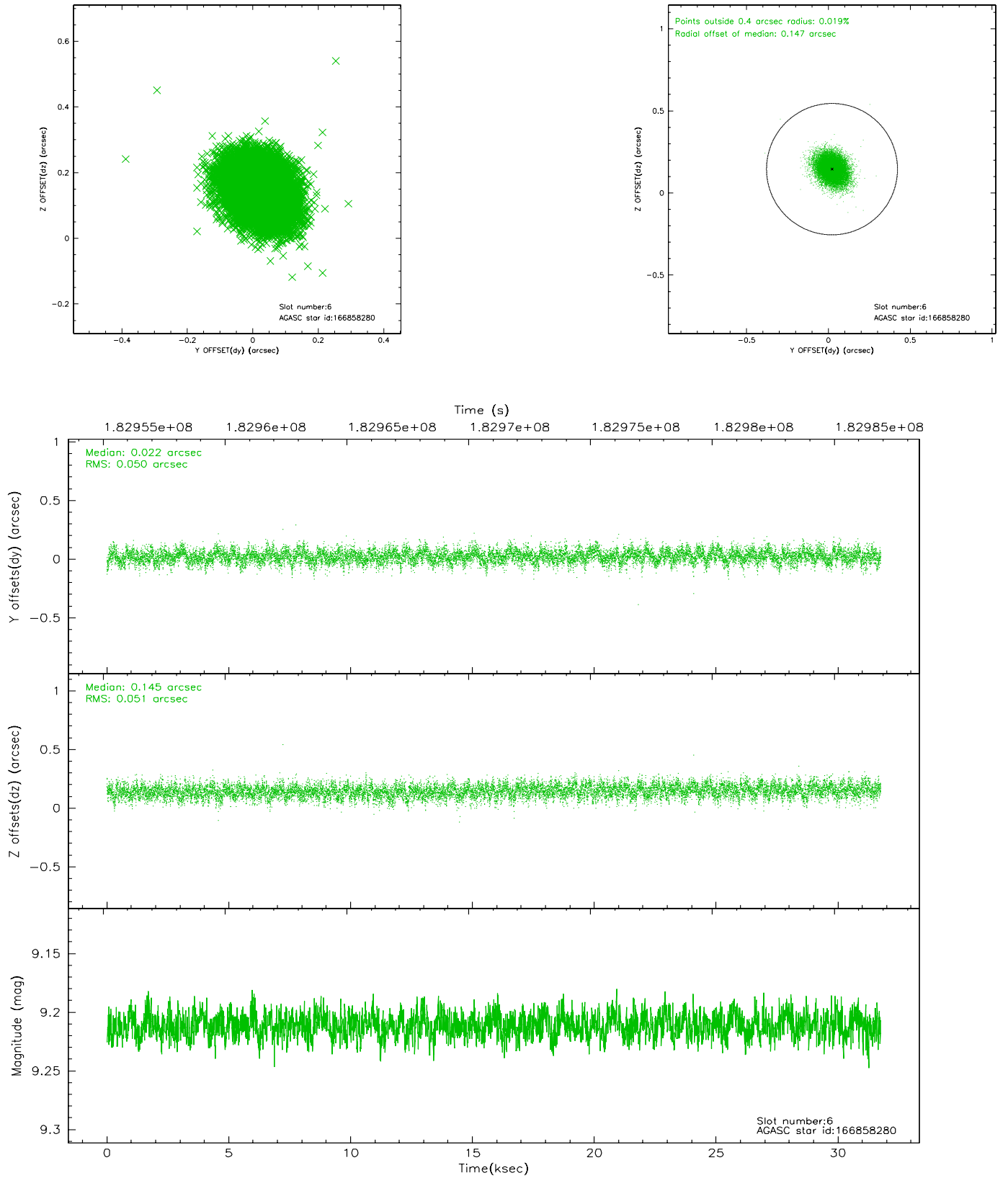
## 2.4.2 Slot 4



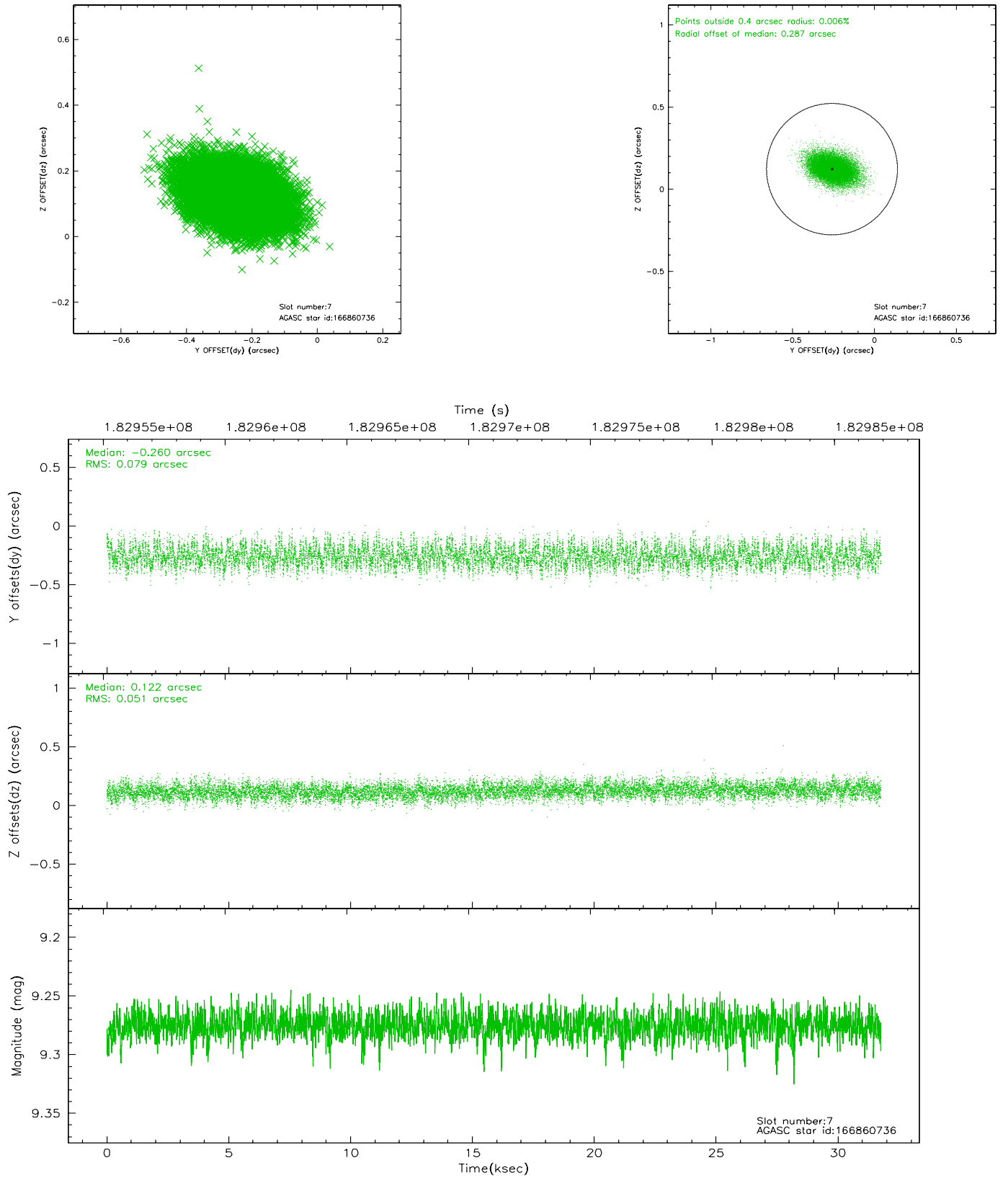
### 2.4.3 Slot 5



## 2.4.4 Slot 6

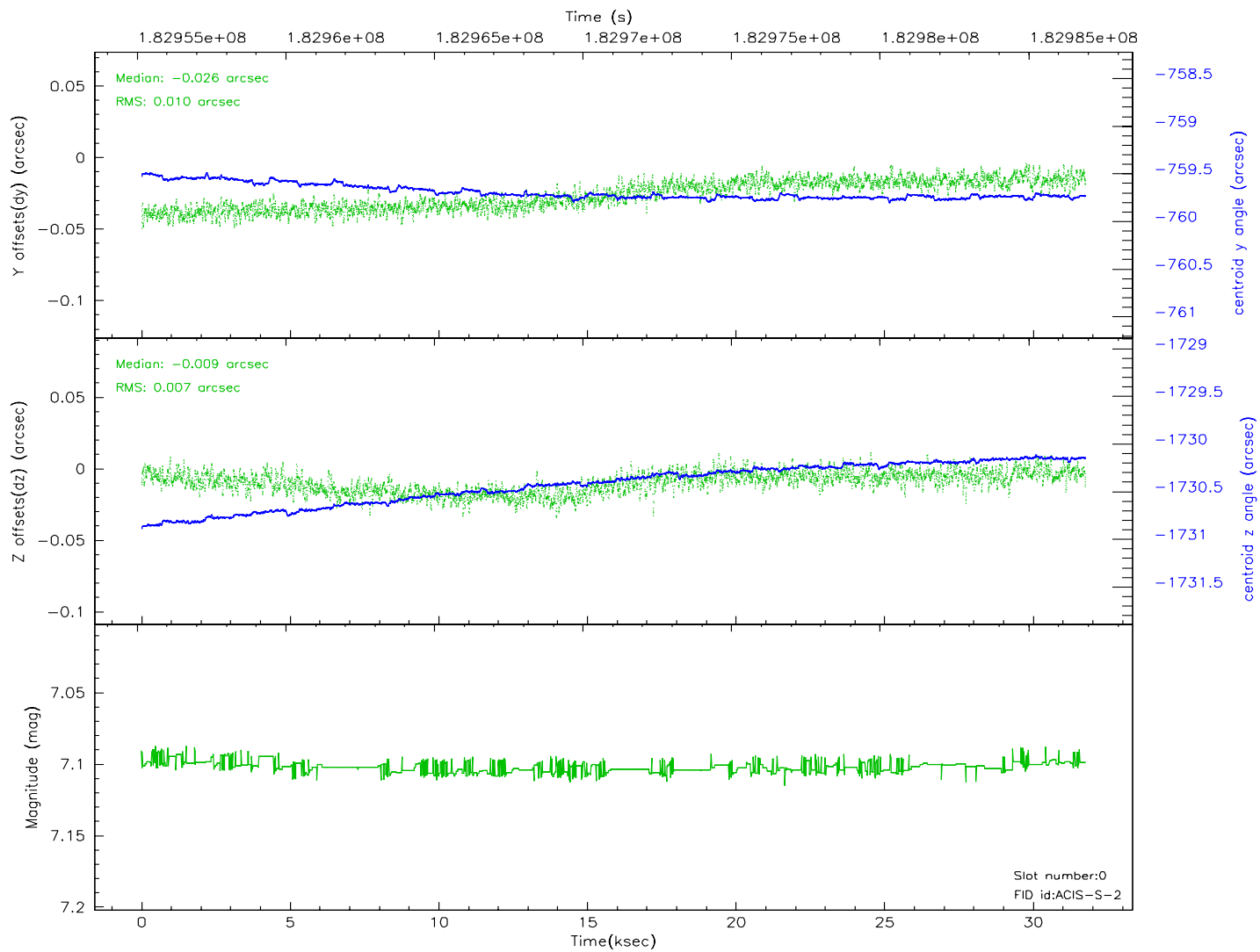
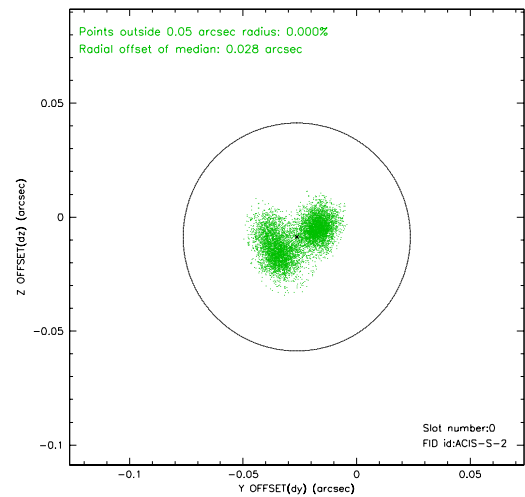
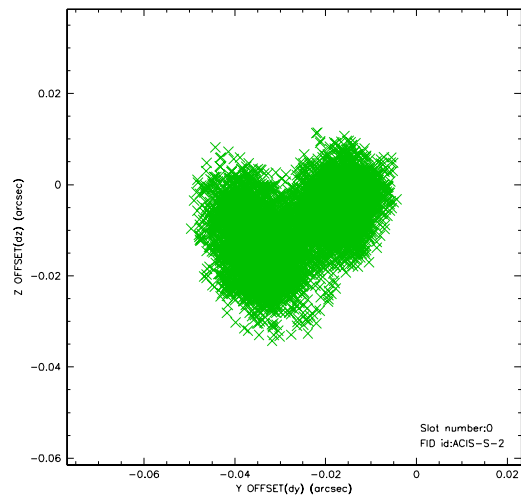


## 2.4.5 Slot 7

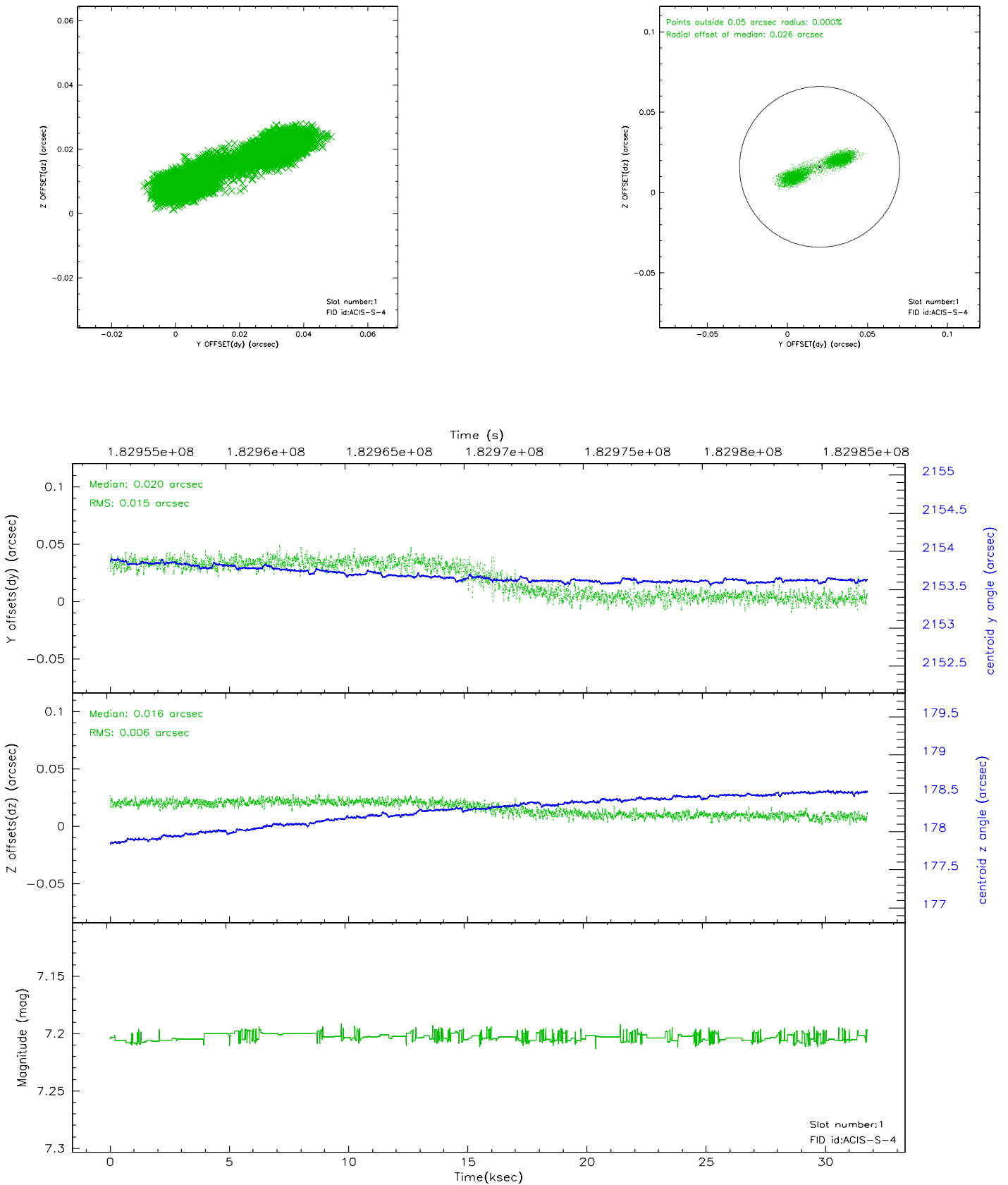


## 2.5 FID Slots

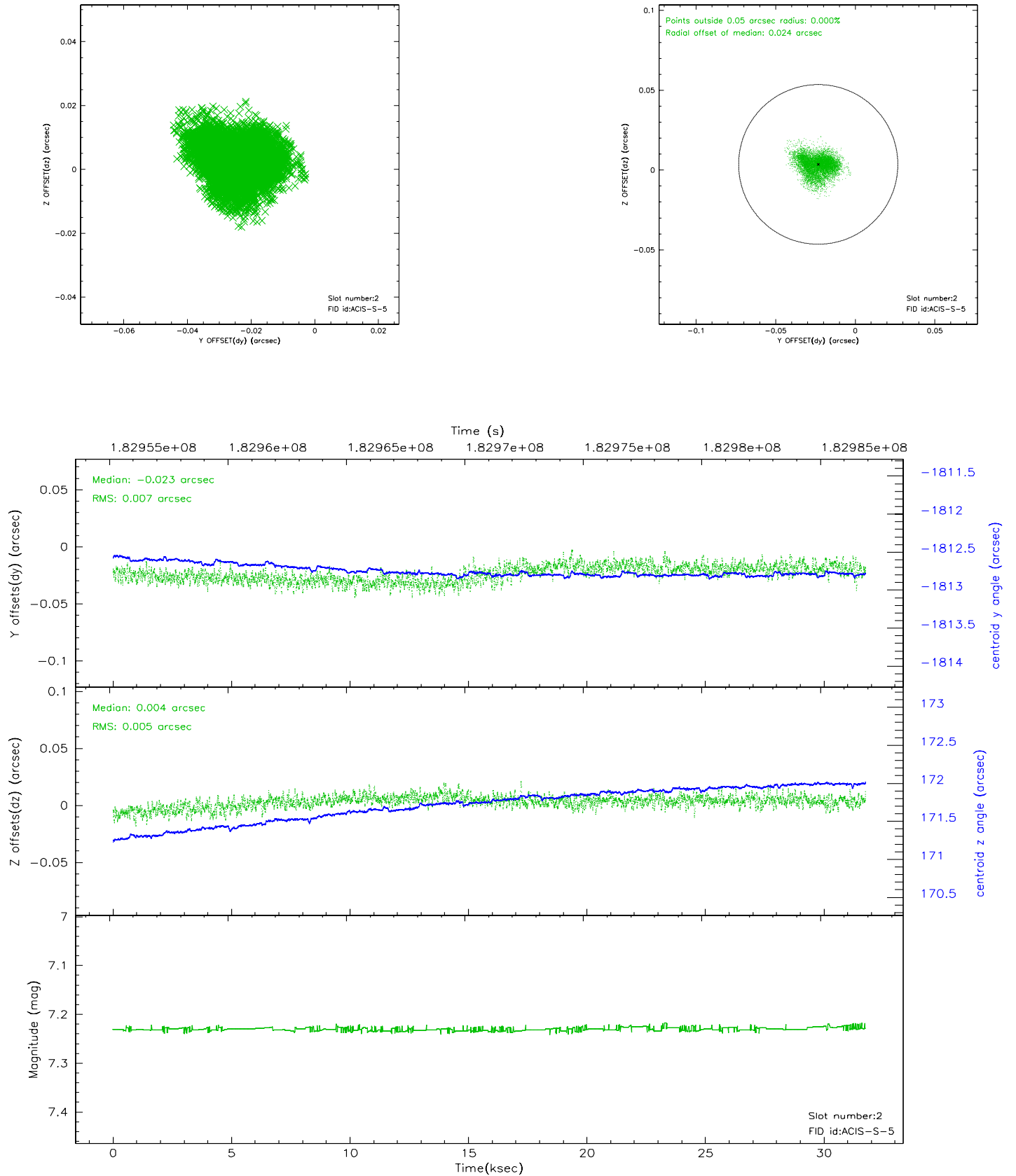
### 2.5.1 Slot 0



## 2.5.2 Slot 1

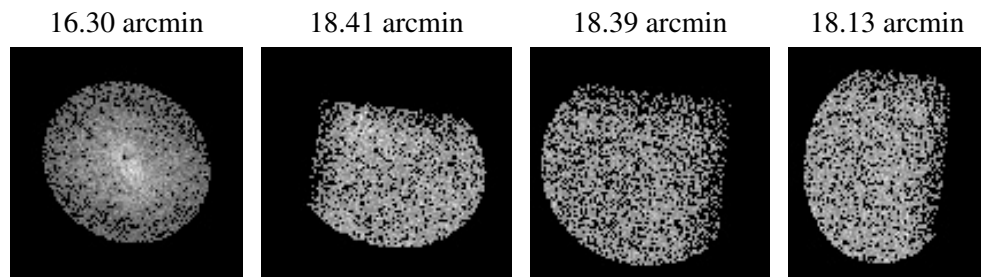


### 2.5.3 Slot 2





### 3 Point Sources



## A Summary

### A.1 Status

V&V Scientist	Beth Sundheim
V&V Date (YYYY-MM-DD)	2006.06.29
V&V Edition	1
V&V Disposition and Status	OK
V&V Charge Time	31.753

### A.2 Comments