

V&V Reference Report

L2 ASCDS Version : 7.6.8

Observation 3728 - L2 Version 001
Chandra X-Ray Center

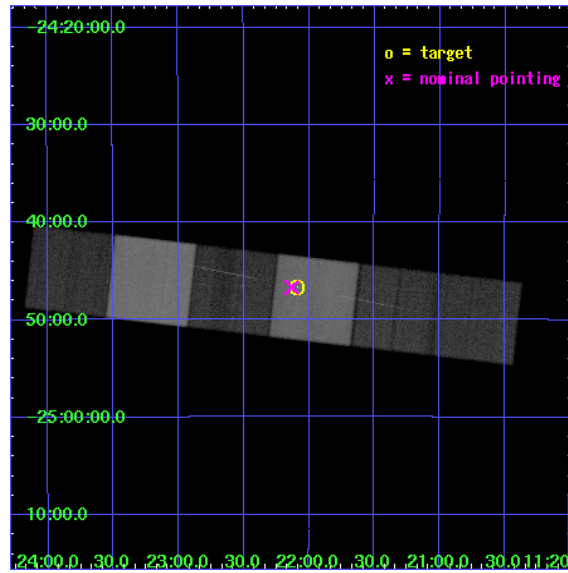
L2 Processing Date : Jul 22 2006

Contents

1	Front	2
2	OBI	3
2.1	OBI	3
2.1.1	Images	3
2.1.2	Bias	3
2.1.3	Parameters	4
2.1.4	Events	4
2.2	Compared Parameters	5
2.3	Aspect	6
2.4	Star Slots	9
2.4.1	Slot 3	9
2.4.2	Slot 4	10
2.4.3	Slot 5	11
2.4.4	Slot 6	12
2.4.5	Slot 7	13
2.5	FID Slots	14
2.5.1	Slot 0	14
2.5.2	Slot 1	15
2.5.3	Slot 2	16
3	Gratings	17
3.1	HEG Arm	17
3.2	MEG Arm	19
A	Summary	21
A.1	Status	21
A.2	Comments	21

1 Front

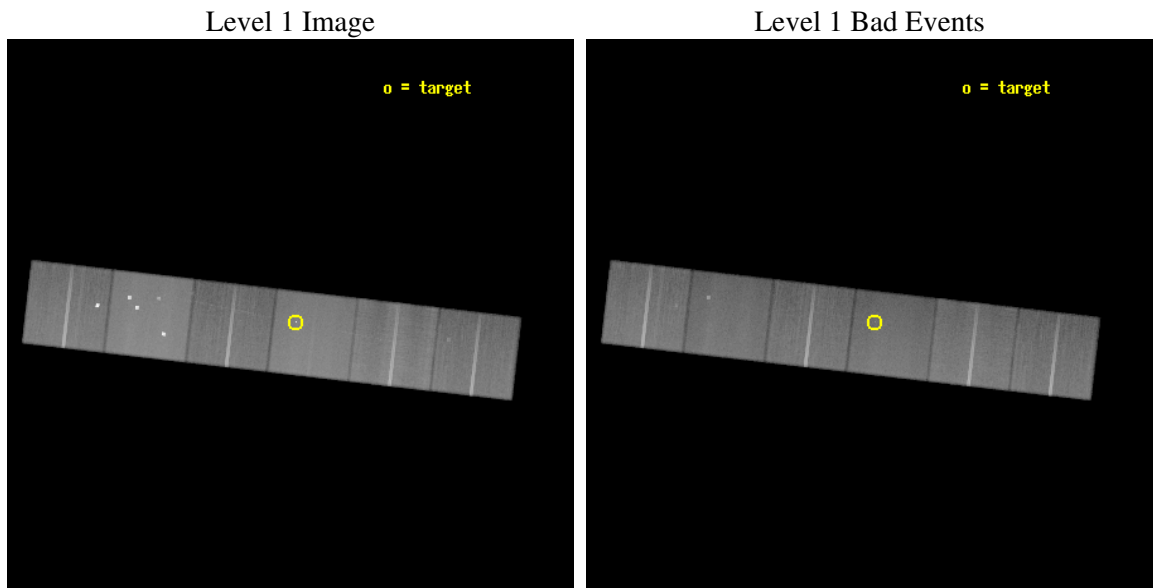
seq_num	200198
obs_id	3728
title	SPECTROSCOPY OF PRE-MAIN SEQUENCE STARS: TV CRT - ACCRETION OR DYNAMO?
observer	Prof. Claude Canizares
object	TV CRT
dtcycle	0
cycle	P
ra_targ	170.522083
dec_targ	-24.777722
ra_nom	170.53269512055
dec_nom	-24.778318383045
roll_nom	6.5555787318343
revision	2
ontime	100156.79962689
livetime	98888.553922827
ontime4	100156.79962689
ontime5	100156.79962689
ontime6	100156.79962689
ontime7	100156.79962689
ontime8	100156.79962689
ontime9	100156.79962689
l2events	973226



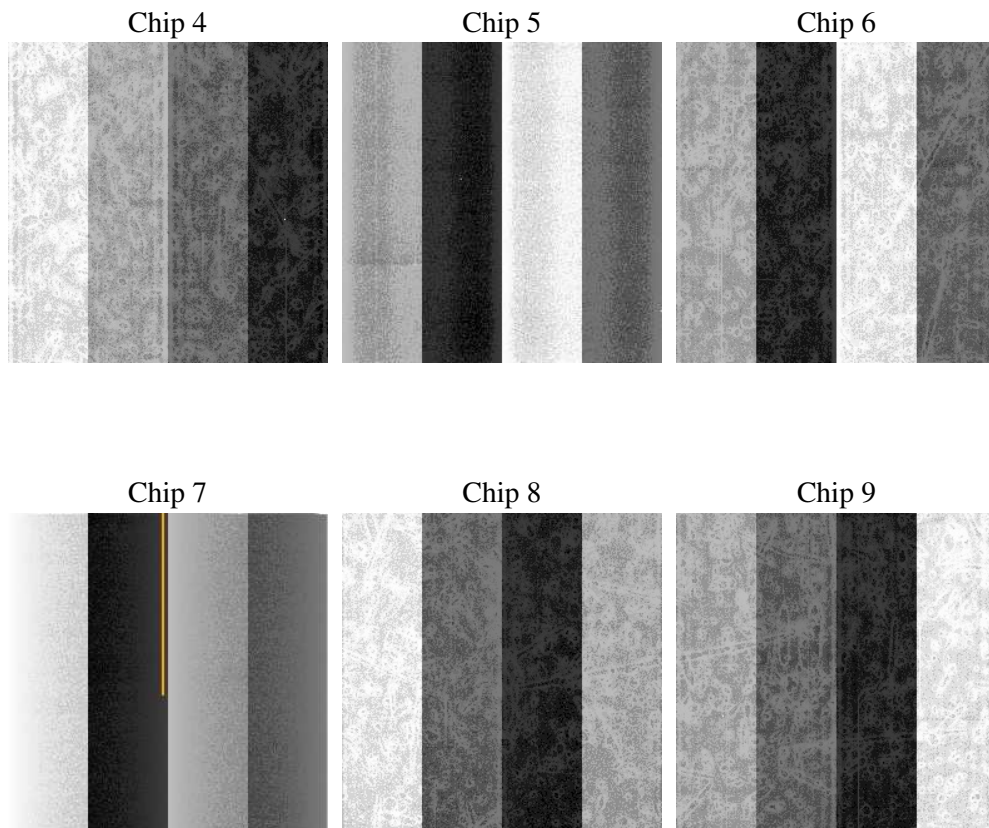
2 OBI

2.1 OBI

2.1.1 Images



2.1.2 Bias



2.1.3 Parameters

obi_num	0
ascdsver	7.6.8
caldsver	3.2.2
date	2006-07-22T19:40:04
revision	2

sched_exp_time	100200.000000
ontime	100163.4242442
ontime4	100163.4242442
ontime5	100163.4242442
ontime6	100163.4242442
ontime7	100163.4242442
ontime8	100163.4242442
ontime9	100163.4242442
l1events	4722881

2.1.4 Events

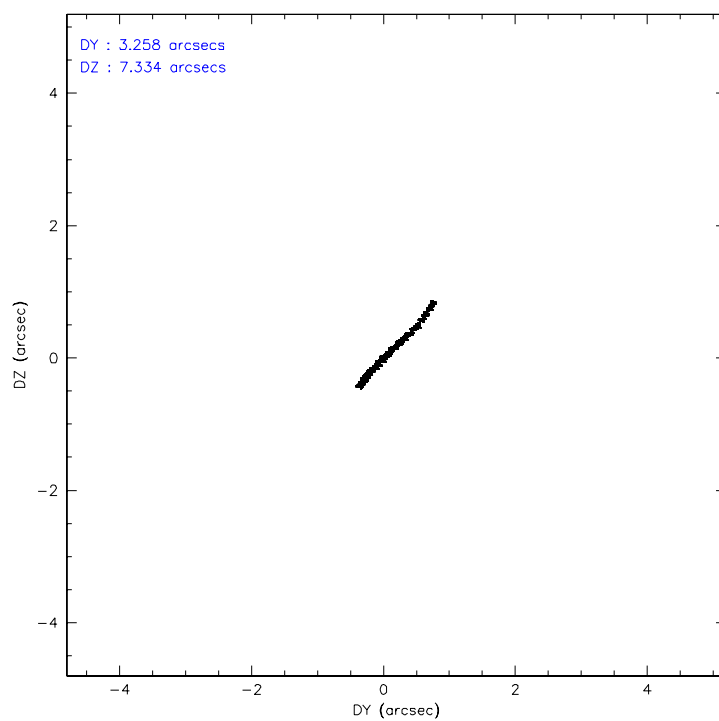
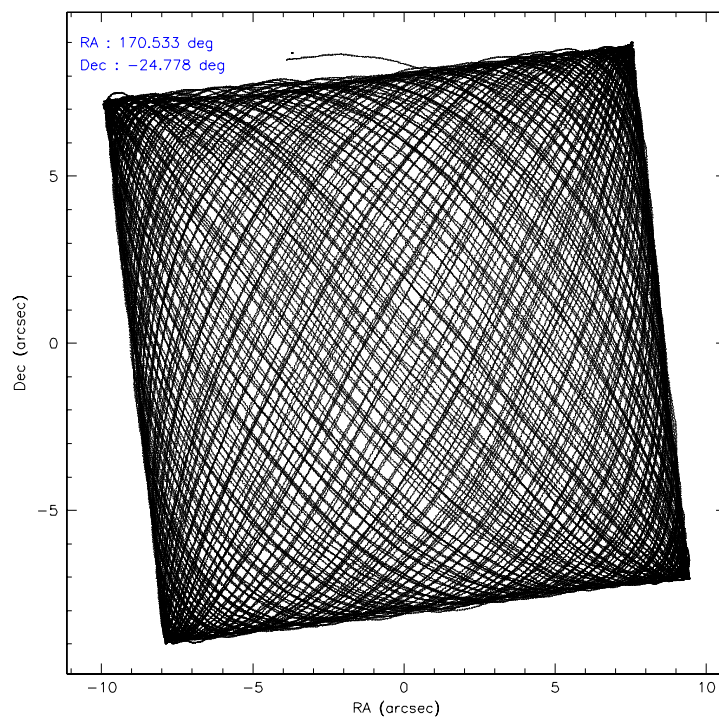
	ccd 4	ccd 5	ccd 6	ccd 7	ccd 8	ccd 9
level 1 events	750555	985847	656867	856518	816323	656771
rejected events	643013	529075	581841	532114	652030	578216
rejected %	85%	53%	88%	62%	79%	88%

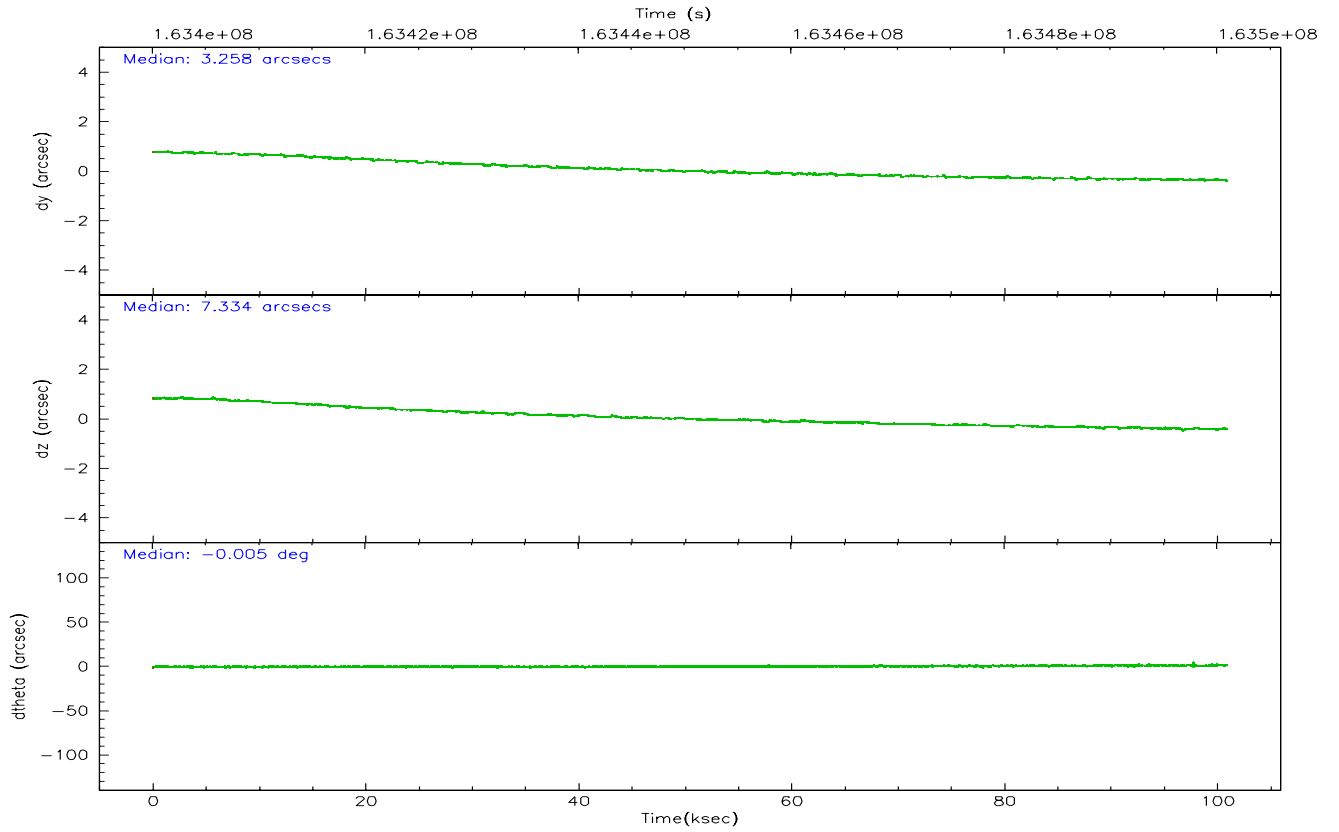
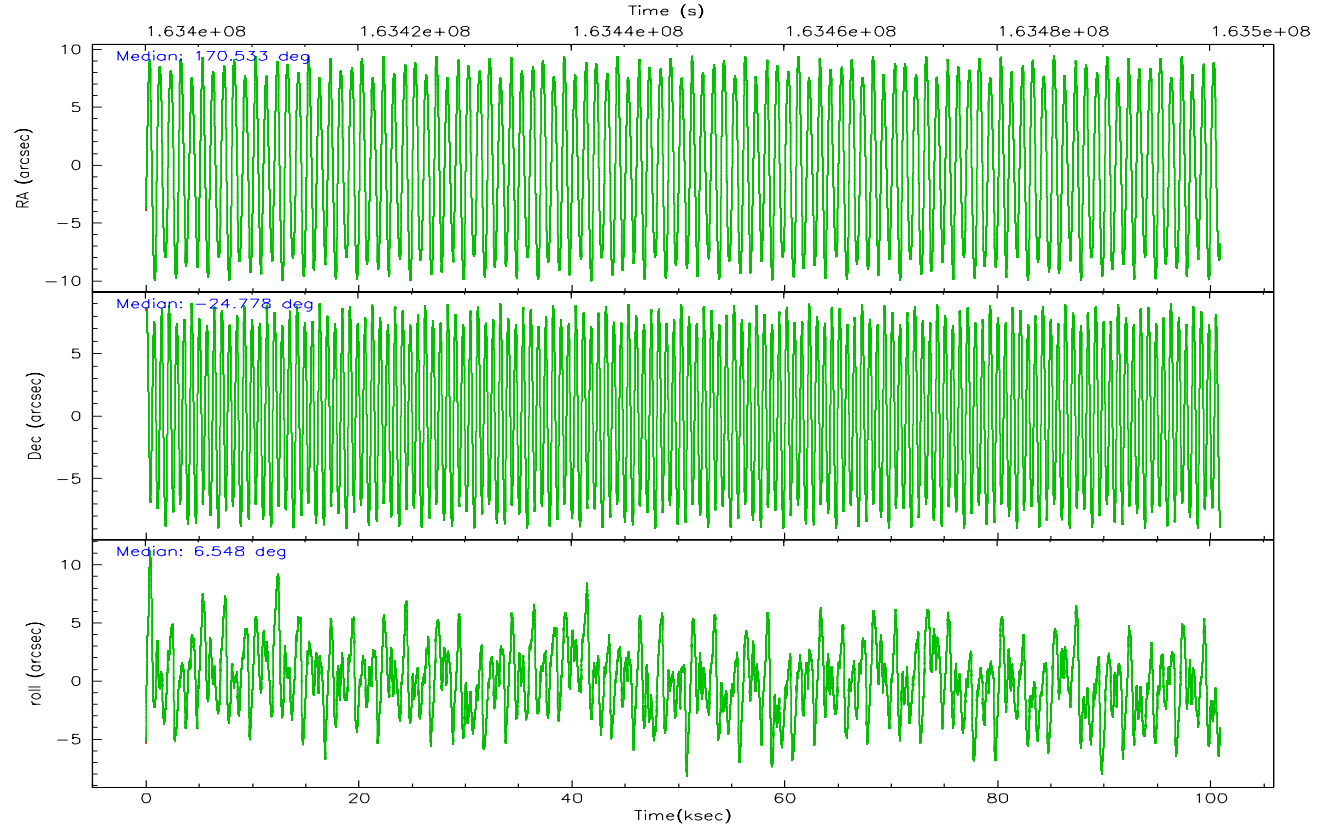
	ccd 4	ccd 5	ccd 6	ccd 7	ccd 8	ccd 9
grade 0 events	63152	73416	29679	18160	52253	32765
	8%	7%	4%	2%	6%	4%
grade 1 events	929	3279	288	514	522	359
	0%	0%	0%	0%	0%	0%
grade 2 events	16367	129157	15202	79965	35264	14964
	2%	13%	2%	9%	4%	2%
grade 3 events	8239	9235	7517	16873	17817	7985
	1%	0%	1%	1%	2%	1%
grade 4 events	7782	8841	7385	16378	16981	7686
	1%	0%	1%	1%	2%	1%
grade 5 events	27886	46033	29311	57368	38053	31094
	3%	4%	4%	6%	4%	4%
grade 6 events	12011	236152	15249	193042	41984	15155
	1%	23%	2%	22%	5%	2%
grade 7 events	614189	479734	552236	474218	613449	546763
	81%	48%	84%	55%	75%	83%

2.2 Compared Parameters

Parameter	Planned	Actual	Parameter	Planned	Actual
Instrument	ACIS	ACIS	Obspar format version number	6	6
Detector	ACIS-456789	ACIS-456789	Obspar file type	PREDICTED	ACTUAL
Grating	HETG	HETG	Obspar update status	NONE	UPDATED
Data mode	FAINT	FAINT	On-chip summing requested	N	N
Observation mode	POINTING	POINTING	Subarray requested	NONE	NONE
Pointing RA	170.508860	170.5326951205471	Alternating exposures requested	N	N
Pointing Dec	-24.794830	-24.7783183830454	Primary exposure time	0.000000	3.2
Pointing Roll	6.388961	6.555578731834334			
SIM focus pos (mm)	-0.684267	-0.6828225247311905			
SIM defocus (mm)	0	0.001444936568705701			
SIM translation stage pos (mm)	-187.132523	-187.1228876879999			
SIM translation stage offset (mm)	-3	-3.009634895007935			
Observation start time	163400783.184000	163399562.57856			
Observation start date	2003-03-07T05:05:19	2003-03-07T04:46:02			
Observation end time	163500983.184000	163501751.49536			
Observation end date	2003-03-08T08:55:19	2003-03-08T09:09:11			
Read mode	TIMED	TIMED			

2.3 Aspect



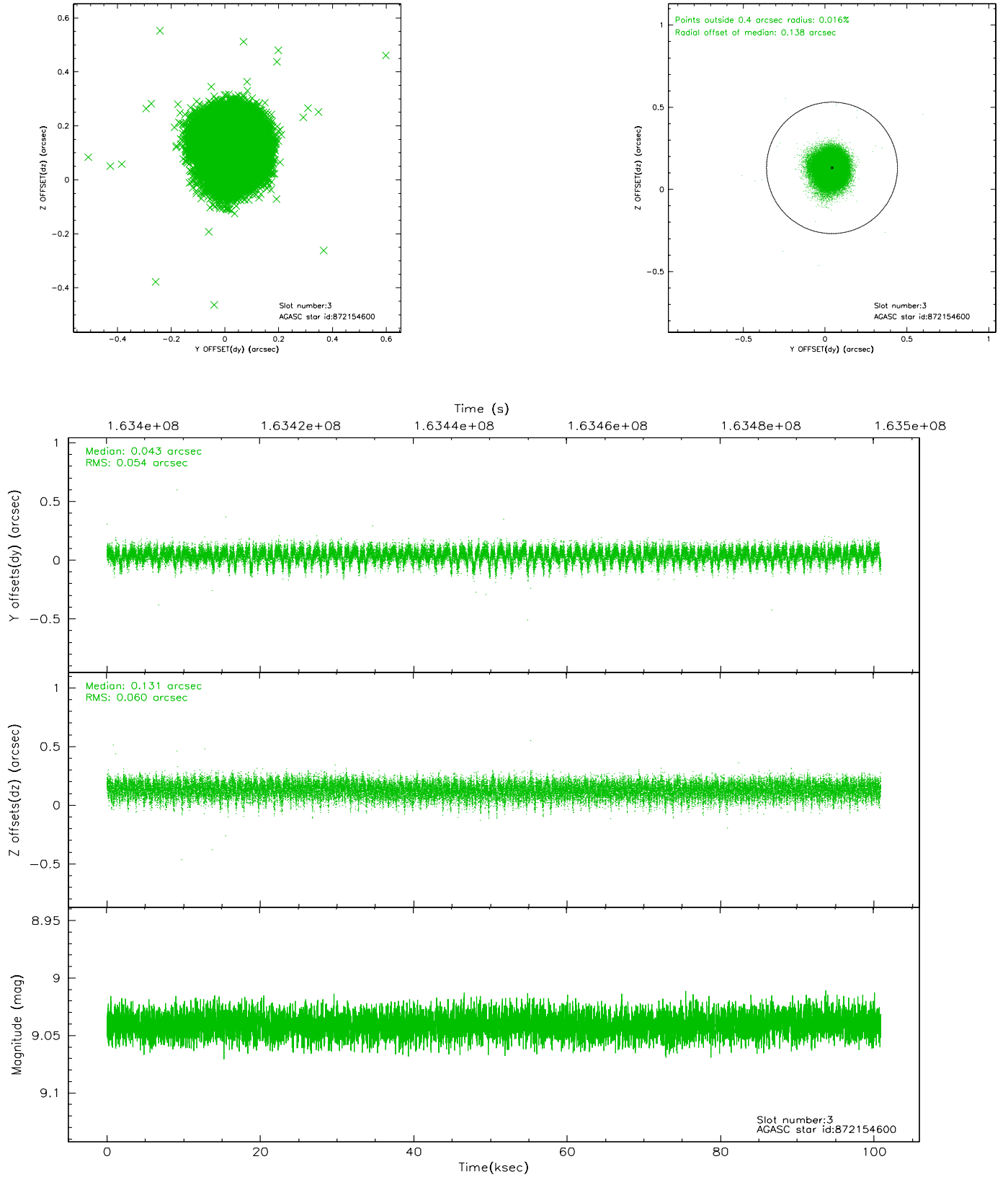


Slot Statistics

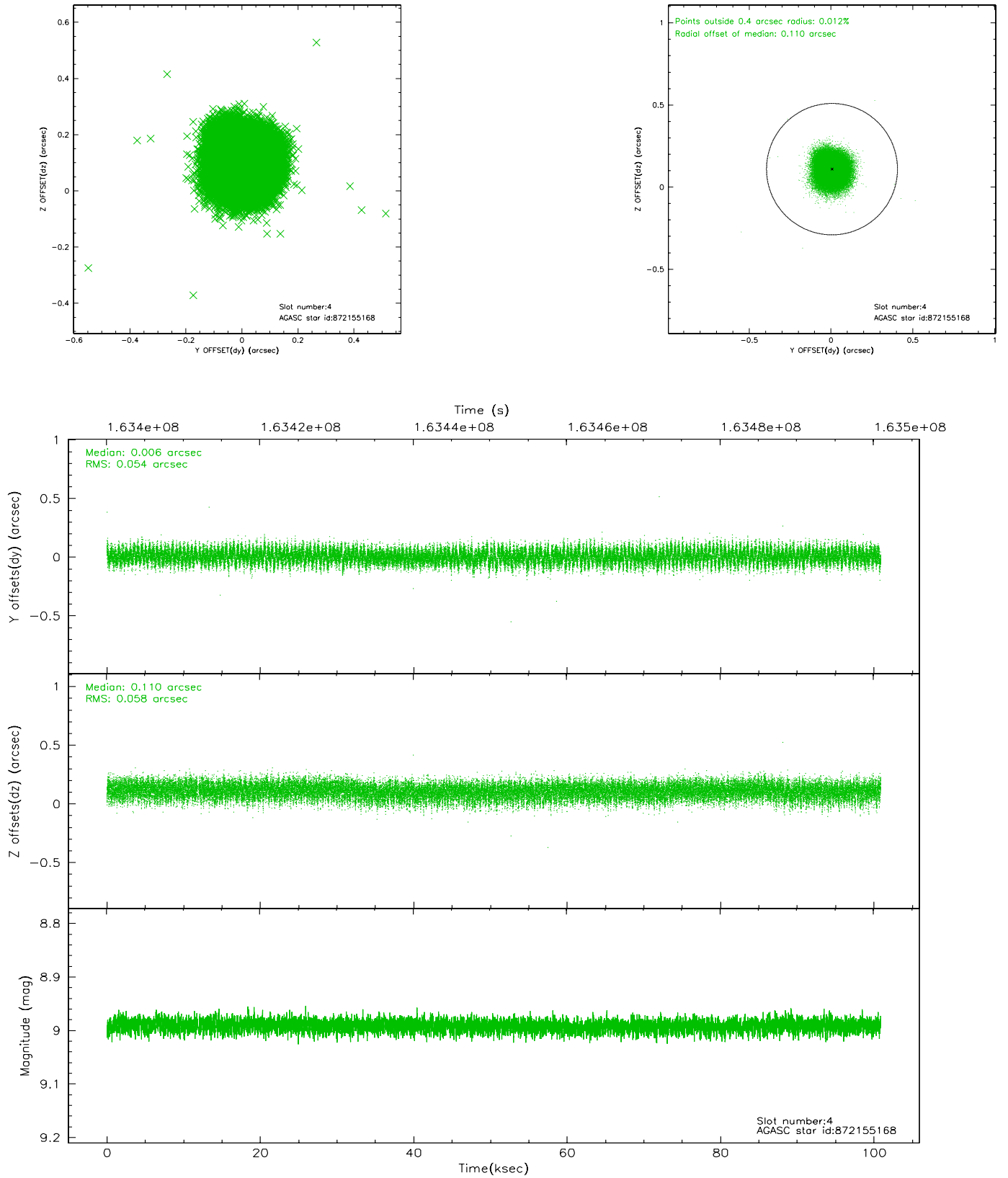
slot	status	id	mag	n_pts	med_dy	med_dz	dr1	dr2	ra	dec	mean_y	mean_z
0	FID	ACIS-S-2	7.10	24608	-0.045	-0.031	0.018	0.032	0.000000	0.000000	-755.80	-1790.76
1	FID	ACIS-S-4	7.20	24608	0.007	0.029	0.013	0.020	0.000000	0.000000	2157.53	117.91
2	FID	ACIS-S-5	7.24	24610	0.007	0.009	0.016	0.025	0.000000	0.000000	-1808.74	111.38
3	GUIDE	872154600	9.04	49200	0.043	0.131	0.086	0.139	170.337702	-25.062730	-661.93	-896.43
4	GUIDE	872155168	8.99	49128	0.006	0.110	0.084	0.133	170.193251	-25.260190	-1207.60	-1551.67
5	GUIDE	871636080	8.21	49208	-0.026	-0.103	0.159	0.238	170.457665	-24.189767	75.12	2183.39
6	GUIDE	871635792	10.06	49040	-0.138	-0.176	0.186	0.325	170.587705	-24.129725	523.48	2350.83
7	GUIDE	872156392	9.73	49189	0.109	0.029	0.122	0.188	169.906665	-24.773252	-1947.90	292.02

2.4 Star Slots

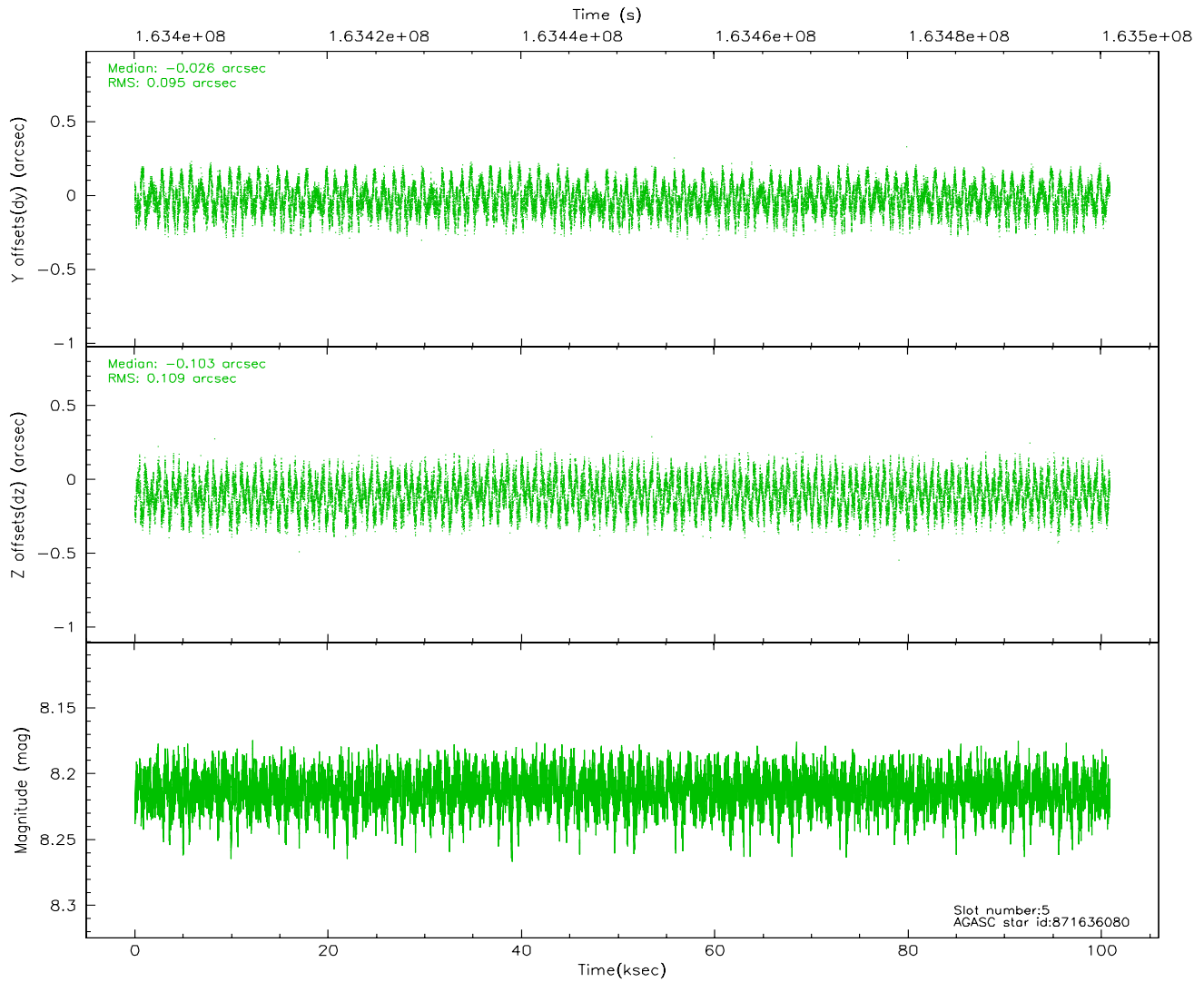
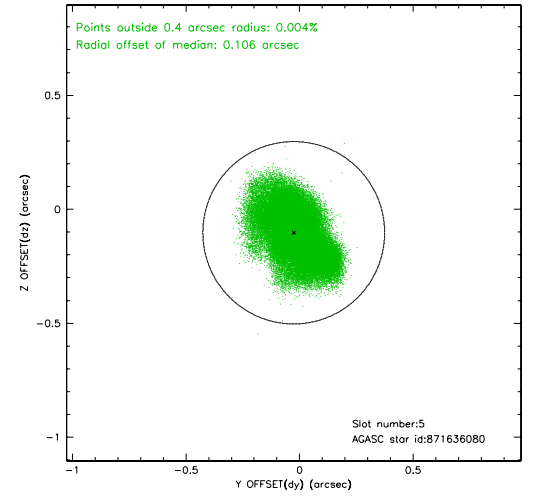
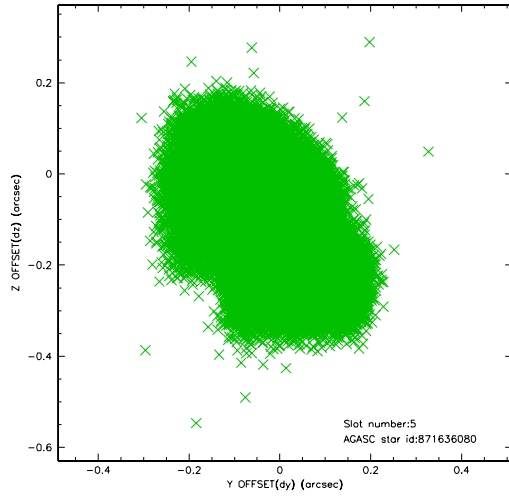
2.4.1 Slot 3



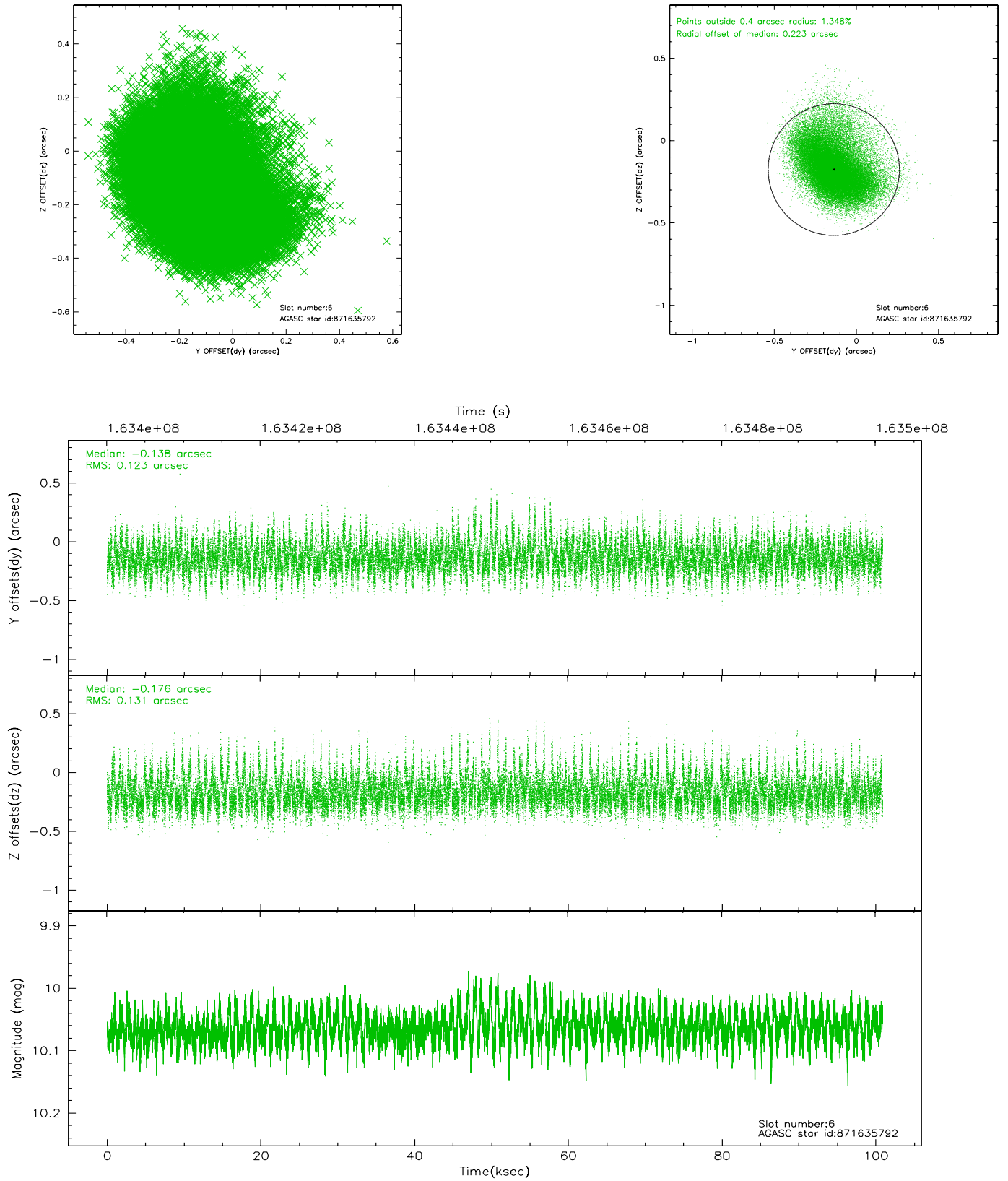
2.4.2 Slot 4



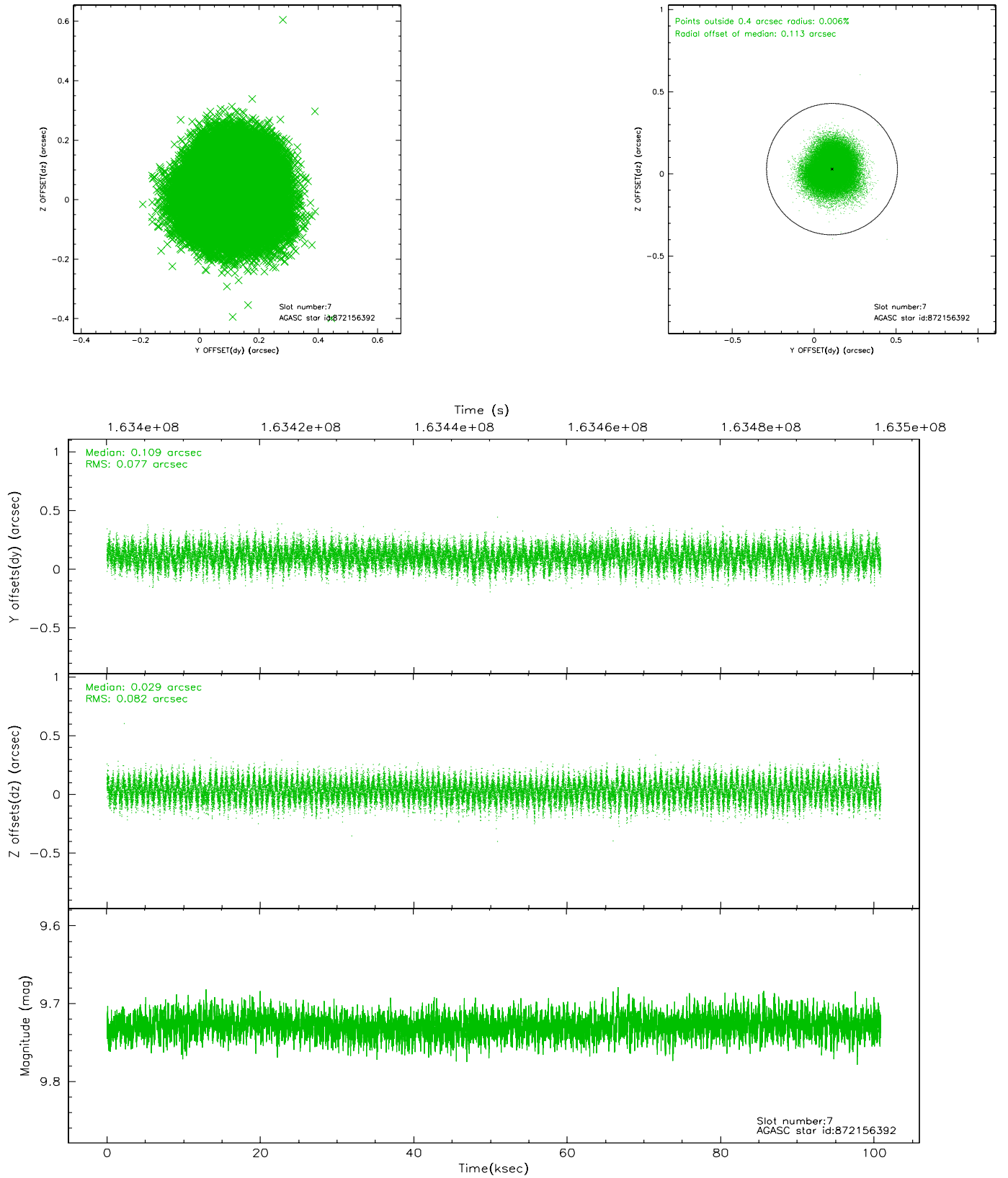
2.4.3 Slot 5



2.4.4 Slot 6

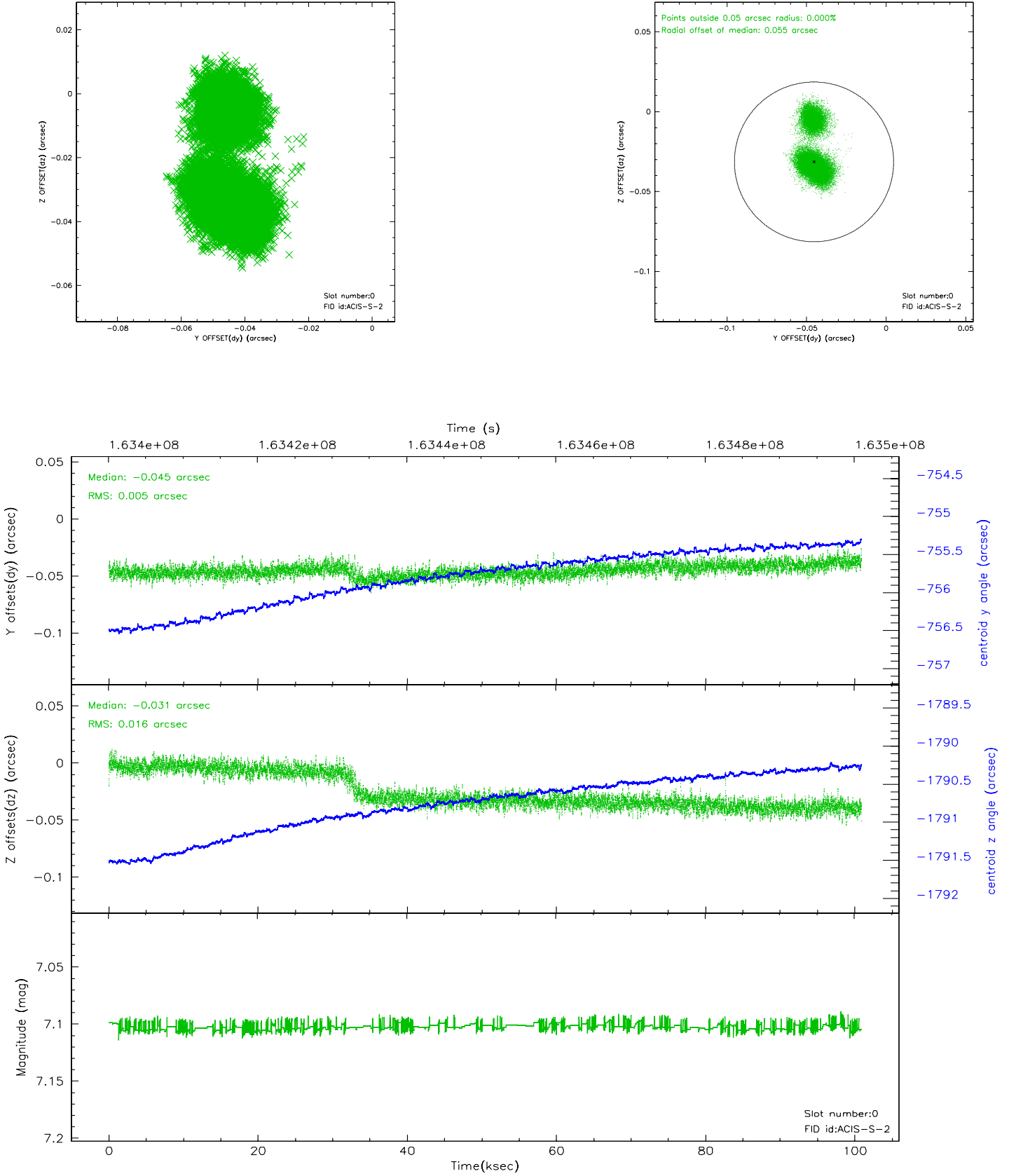


2.4.5 Slot 7

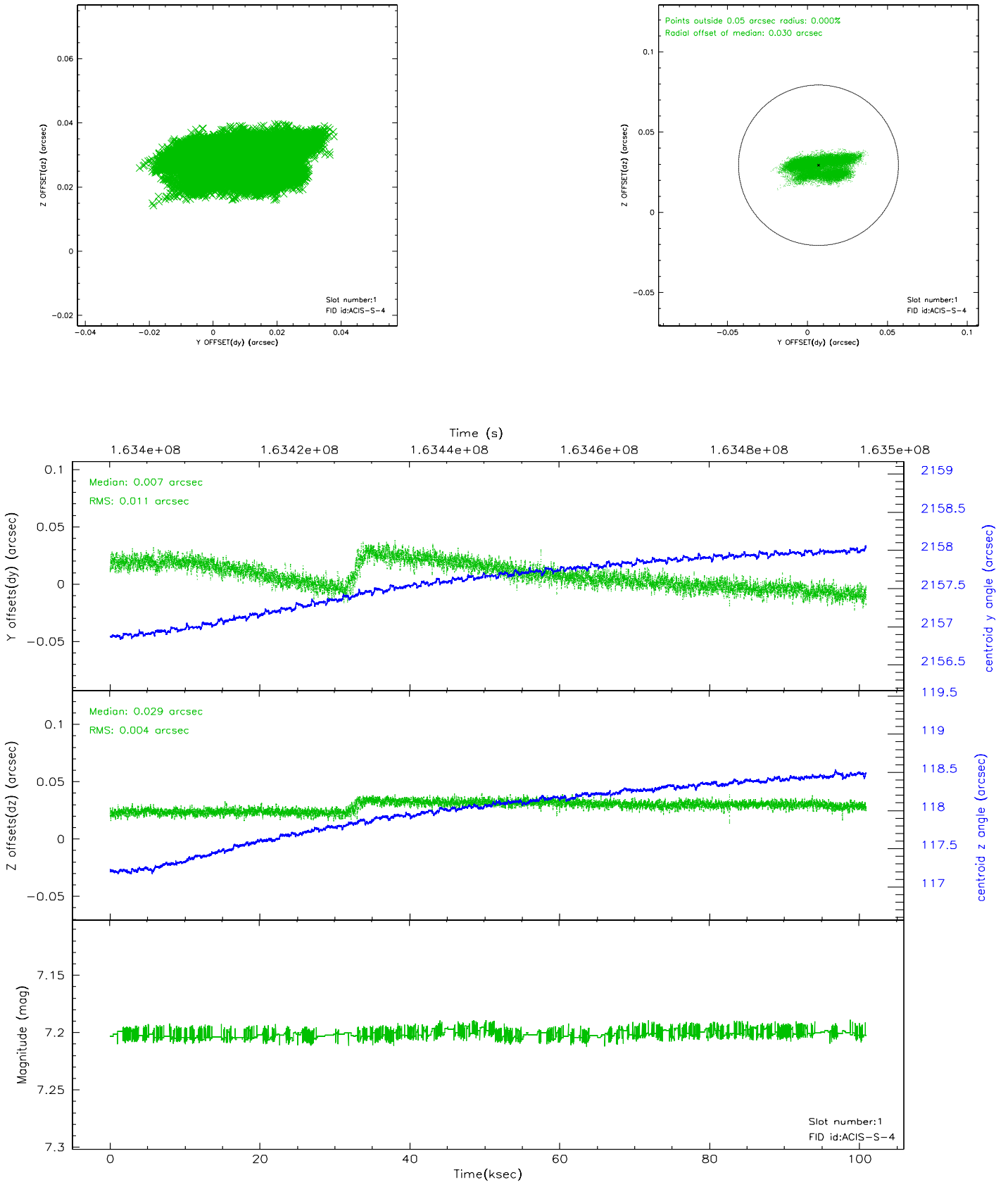


2.5 FID Slots

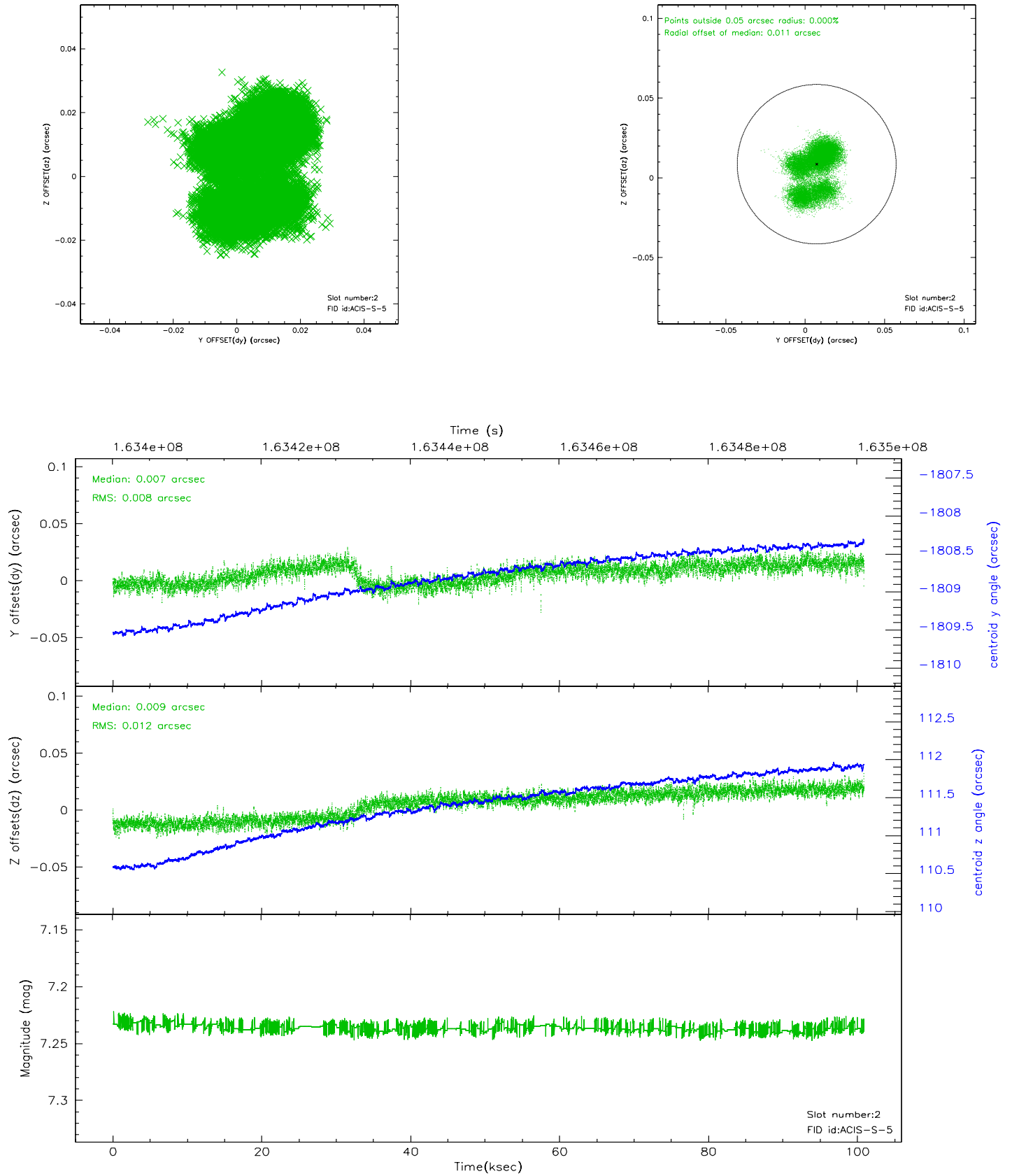
2.5.1 Slot 0



2.5.2 Slot 1



2.5.3 Slot 2

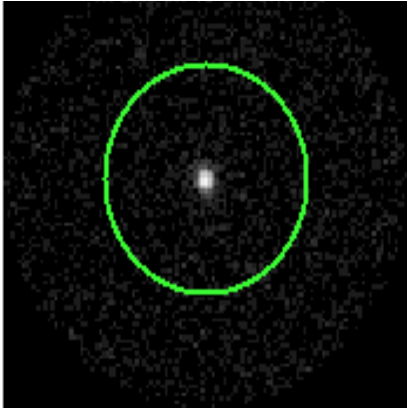


3 Gratings

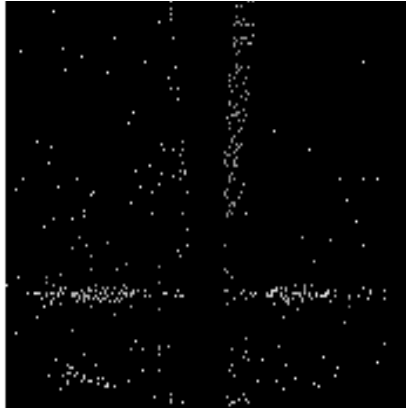
3.1 HEG Arm



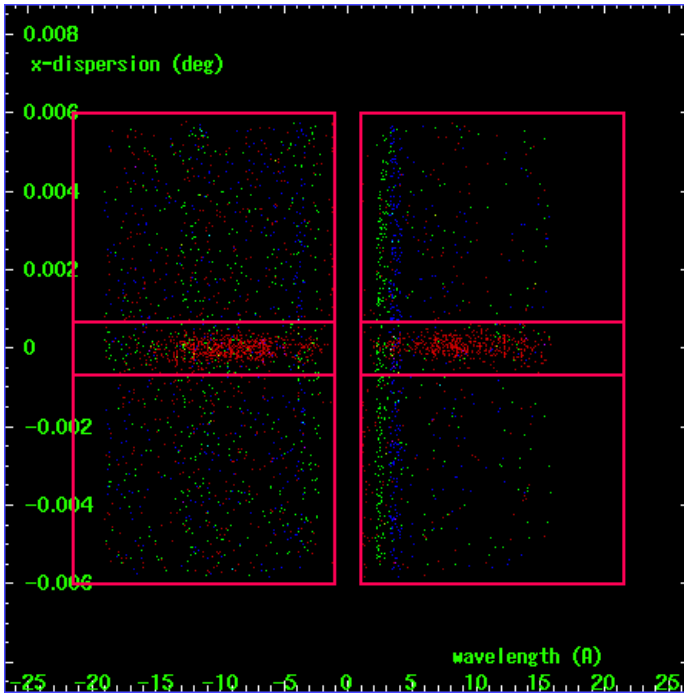
HEG Order Sort 123



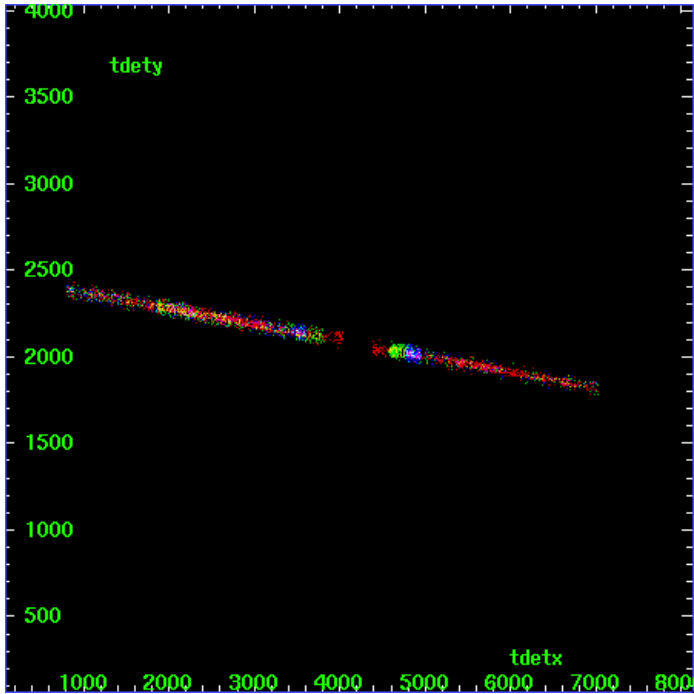
HEG Zero Order



HEG Order Sort ALL

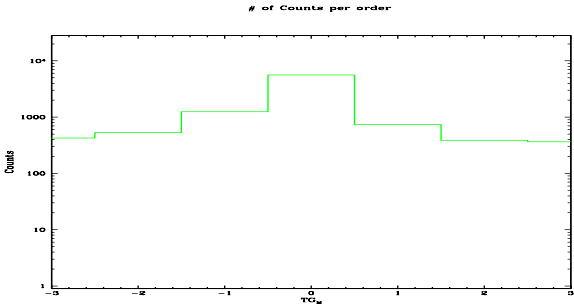


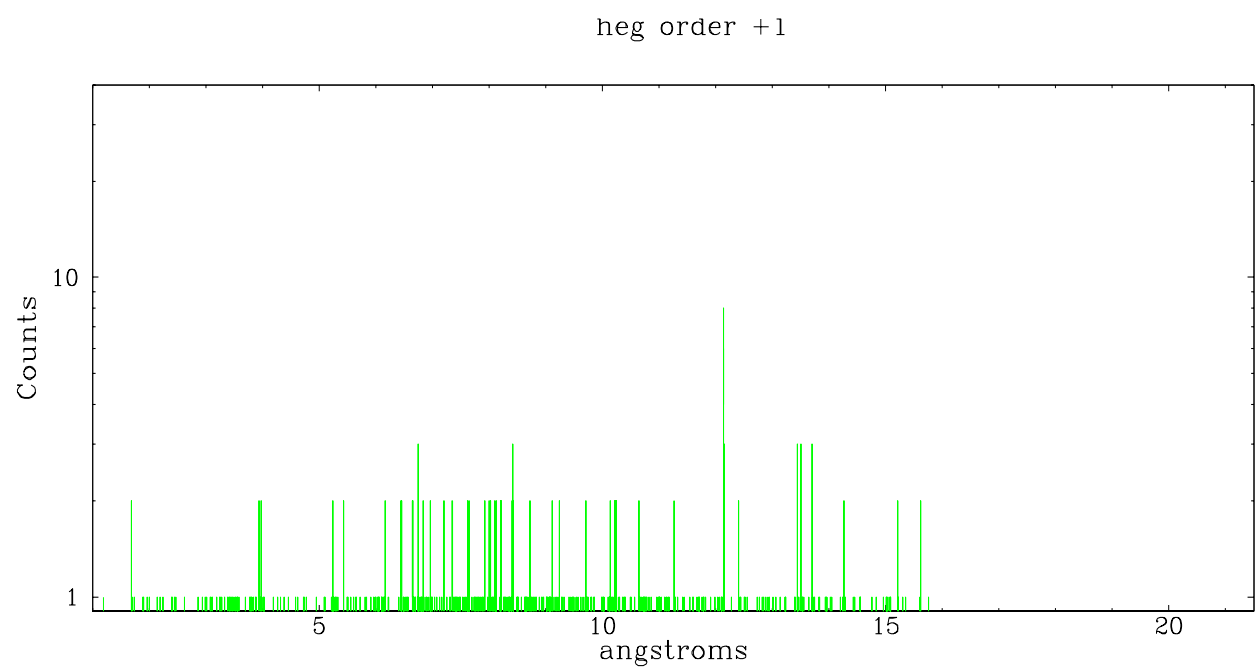
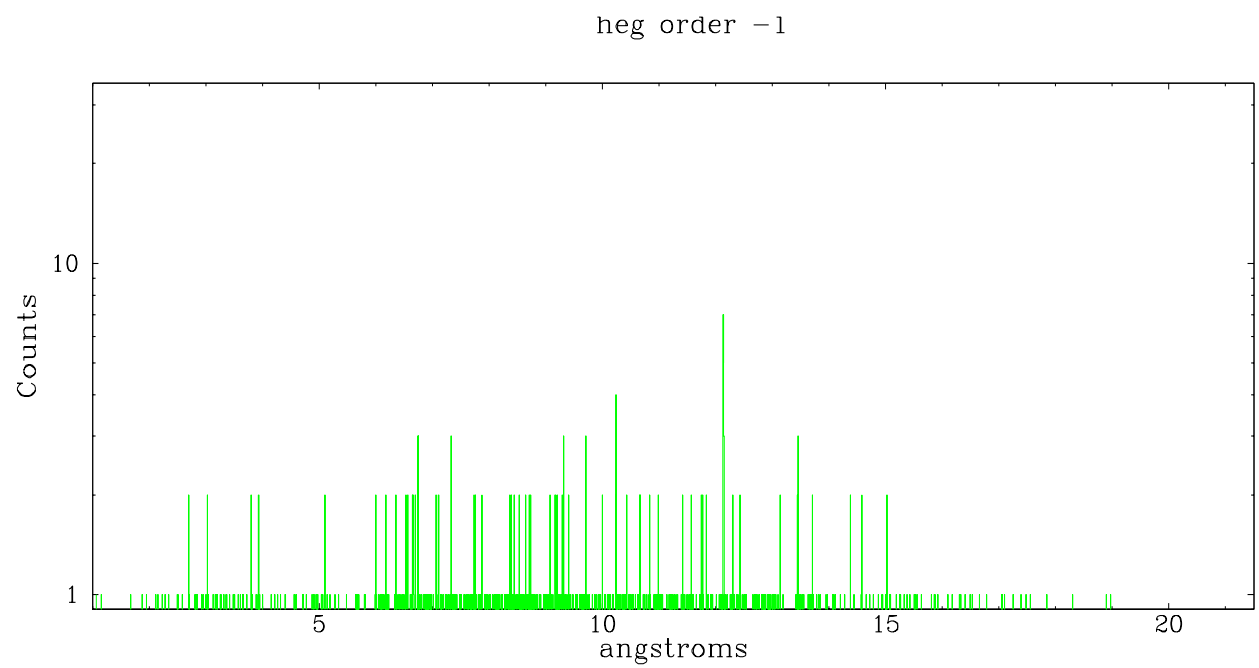
Spot Image HEG



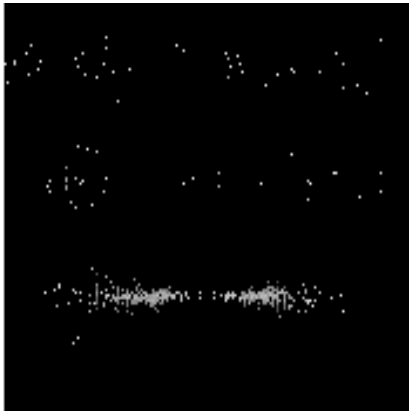
Full Detector HEG

	order -3	order -2	order -1	order 0	order 1	order 2	order 3
Events	426	529	1252	5607	736	389	364

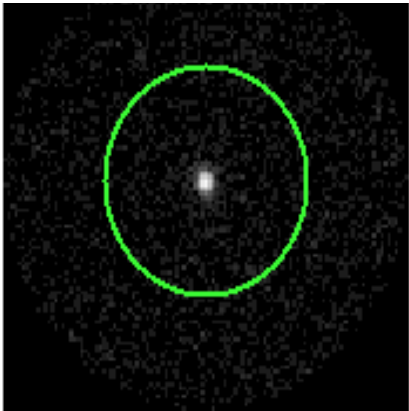




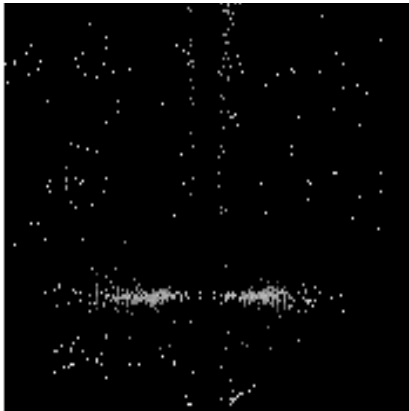
3.2 MEG Arm



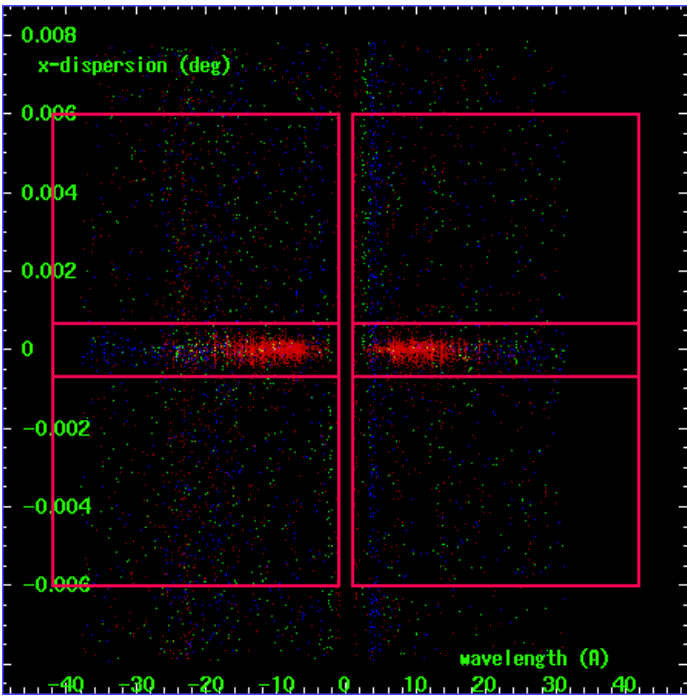
MEG Order Sort 123



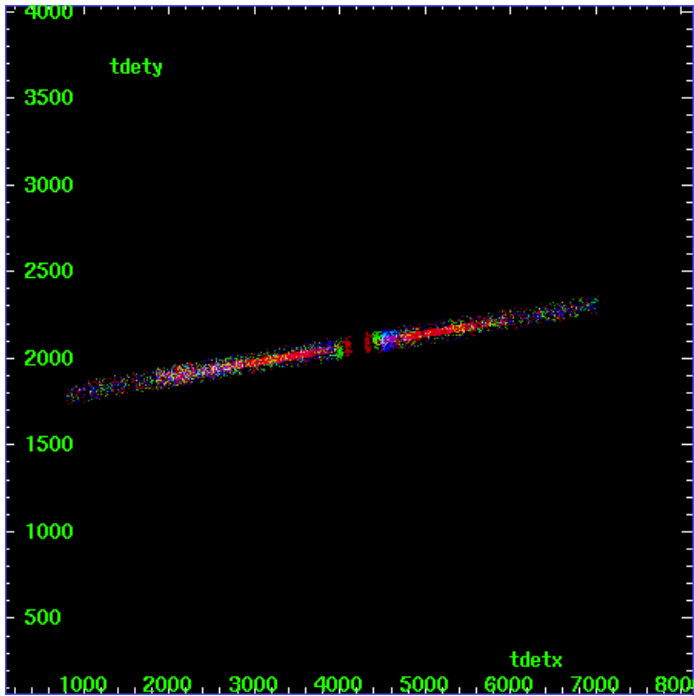
MEG Zero Order



MEG Order Sort ALL

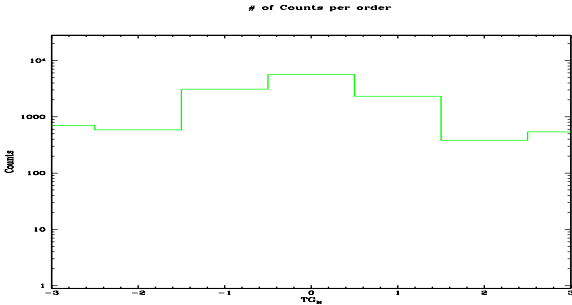


Spot Image MEG

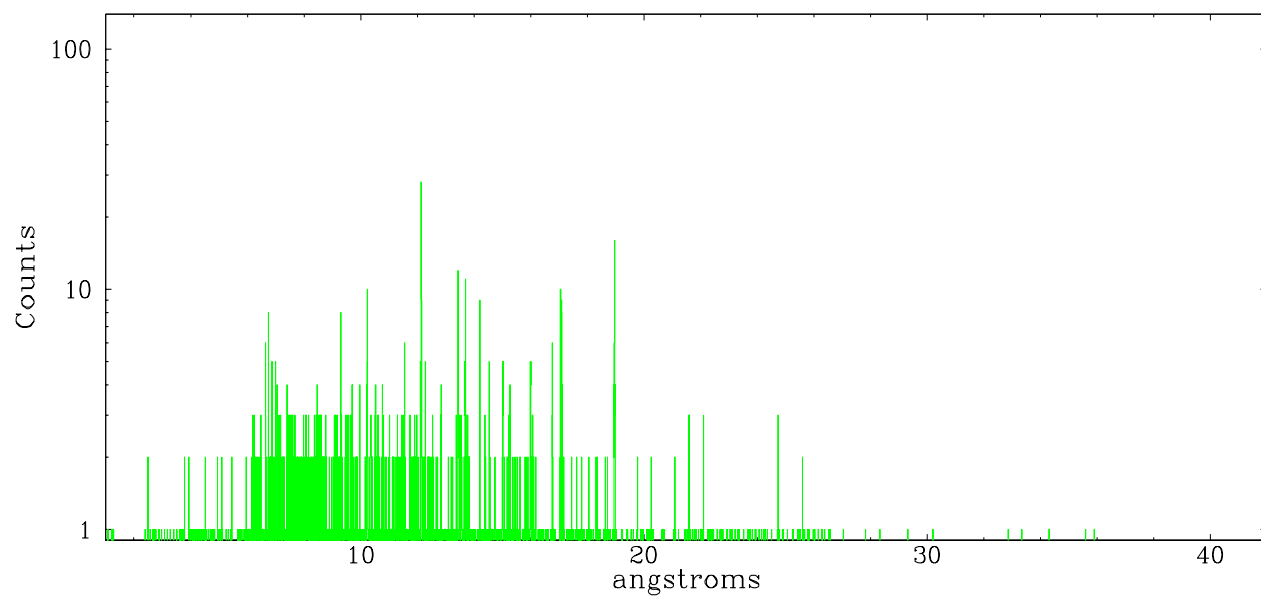


Full Detector MEG

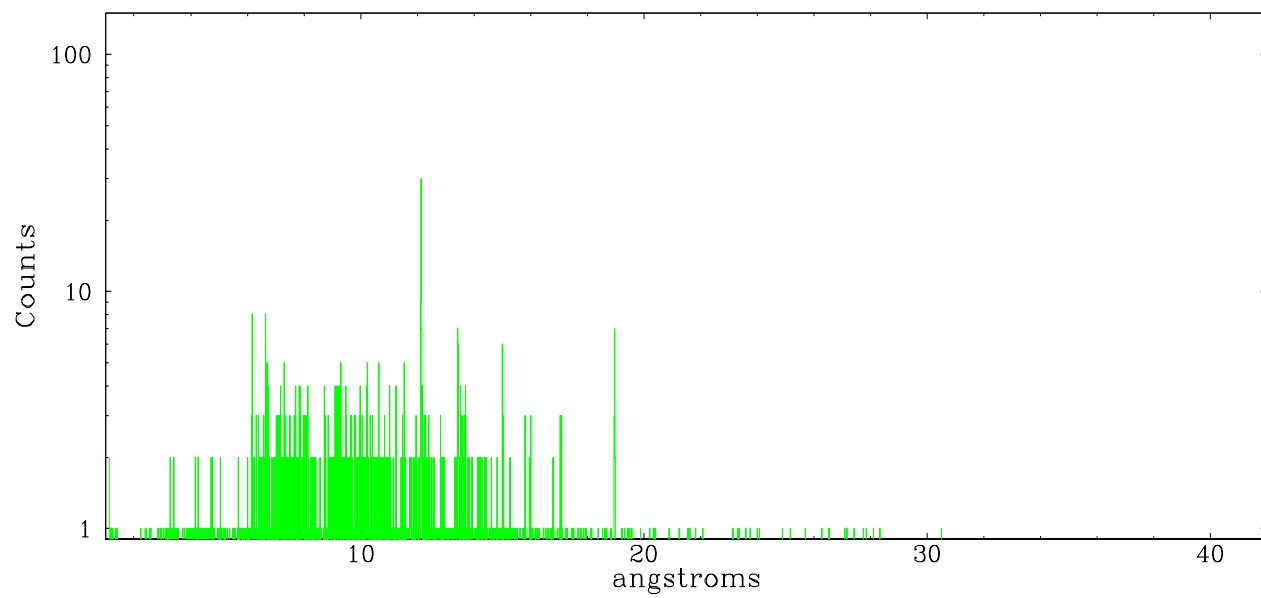
	order -3	order -2	order -1	order 0	order 1	order 2	order 3
Events	702	586	3094	5607	2316	383	539



meg order -1



meg order +1



A Summary

A.1 Status

V&V Scientist	Beth Sundheim
V&V Date (YYYY-MM-DD)	2006.07.23
V&V Edition	1
V&V Disposition and Status	OK
V&V Charge Time	100.16

A.2 Comments