

V&V Reference Report

L2 ASCDS Version : 7.6.9

Observation 3356 - L2 Version 001
Chandra X-Ray Center

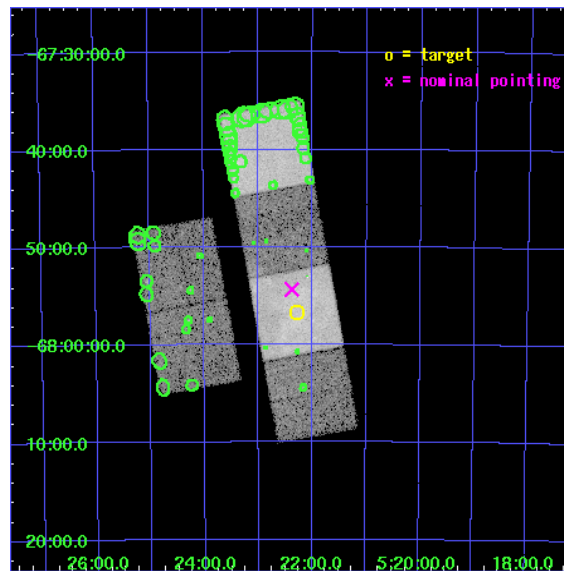
L2 Processing Date : Oct 4 2006

Contents

1	Front	2
2	OBI	3
2.1	OBI	3
2.1.1	Images	3
2.1.2	Bias	3
2.1.3	Parameters	4
2.1.4	Events	4
2.2	Compared Parameters	5
2.3	Aspect	6
2.4	Star Slots	9
2.4.1	Slot 3	9
2.4.2	Slot 4	10
2.4.3	Slot 5	11
2.4.4	Slot 6	12
2.4.5	Slot 7	13
2.5	FID Slots	14
2.5.1	Slot 0	14
2.5.2	Slot 1	15
2.5.3	Slot 2	16
3	Point Sources	17
A	Summary	18
A.1	Status	18
A.2	Comments	18

1 Front

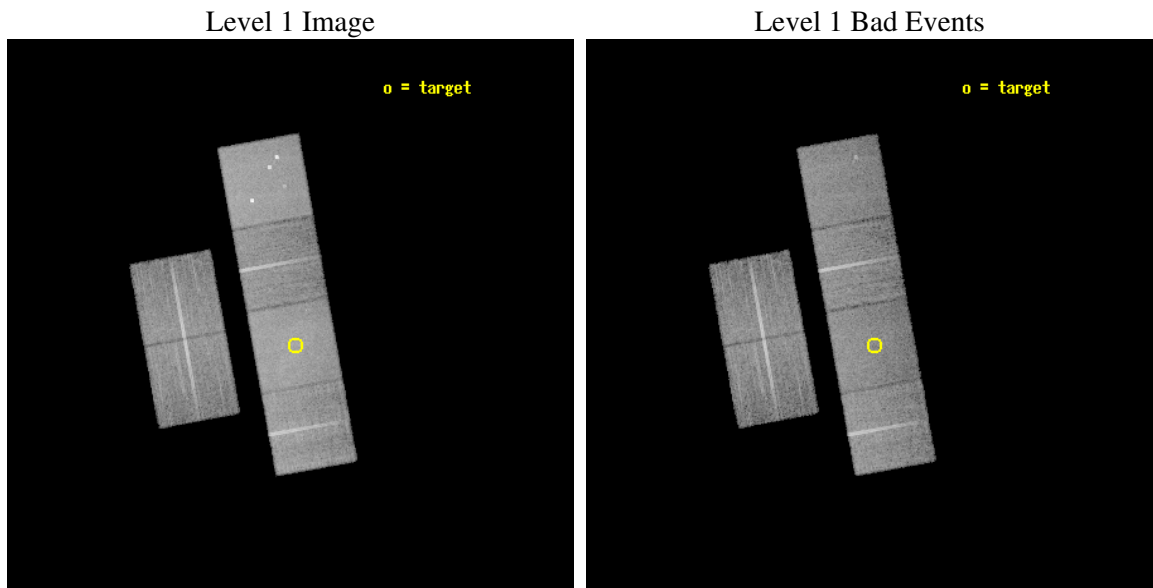
seq_num	900195
obs_id	3356
title	X-RAY EMISSION MECHANISMS AND EVOLUTION OF SUPERBUBBLES
observer	DR. Sally Oey
object	DEM L152
dtcycle	0
cycle	P
ra_targ	80.570833
dec_targ	-67.943889
ra_nom	80.594186698636
dec_nom	-67.905784280464
roll_nom	79.678272887031
revision	2
ontime	18953.599929392
livetime	18713.598034599
ontime2	18953.599929392
ontime3	18950.358959138
ontime5	18953.599929392
ontime6	18953.599929392
ontime7	18953.599929392
ontime8	18953.599929392
l2events	193192



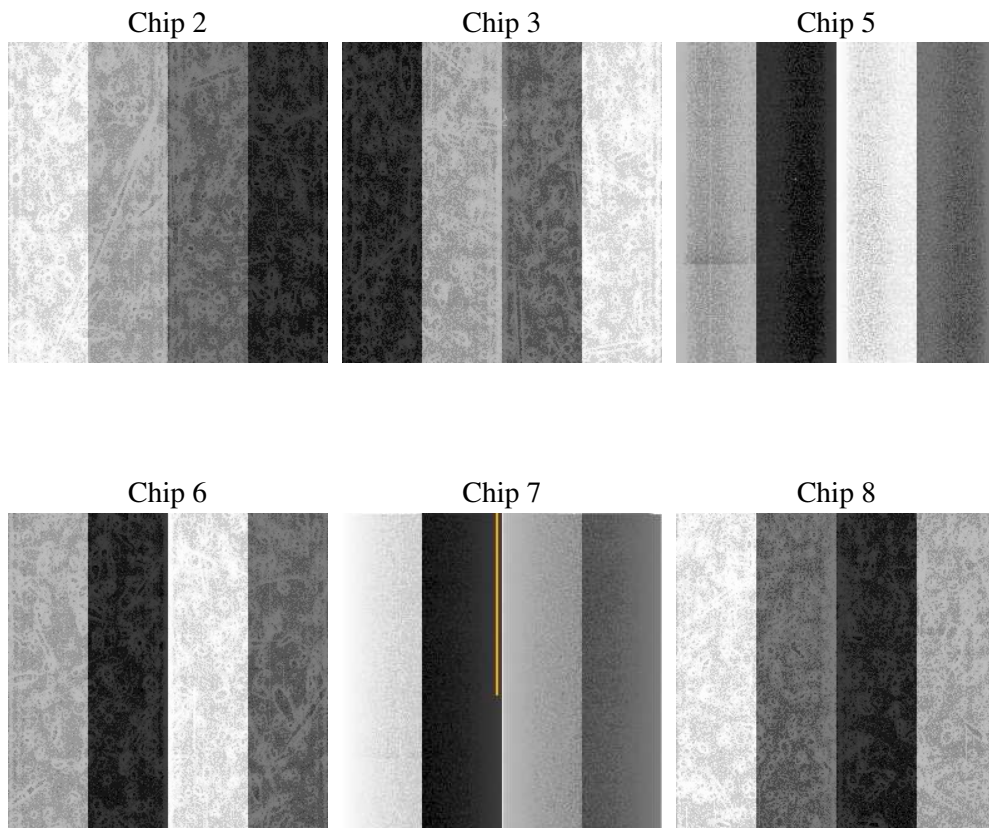
2 OBI

2.1 OBI

2.1.1 Images



2.1.2 Bias



2.1.3 Parameters

obi_num	0
ascdsver	7.6.9
caldsver	3.2.3
date	2006-10-04T15:20:43
revision	2

sched_exp_time	18992.474000
ontime	18959.848544717
ontime2	18959.848544717
ontime3	18956.607574463
ontime5	18959.848544717
ontime6	18959.848544717
ontime7	18959.848544717
ontime8	18959.848524809
l1events	836479

2.1.4 Events

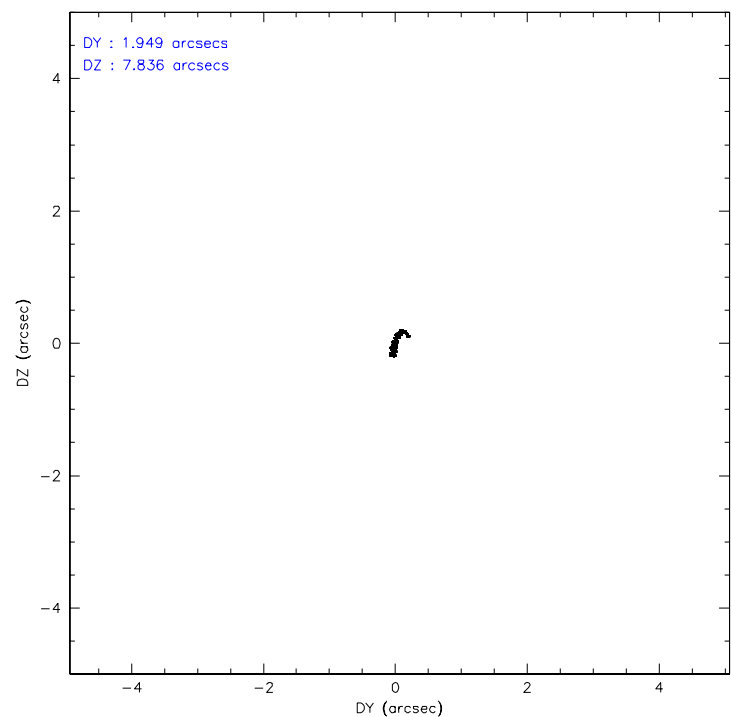
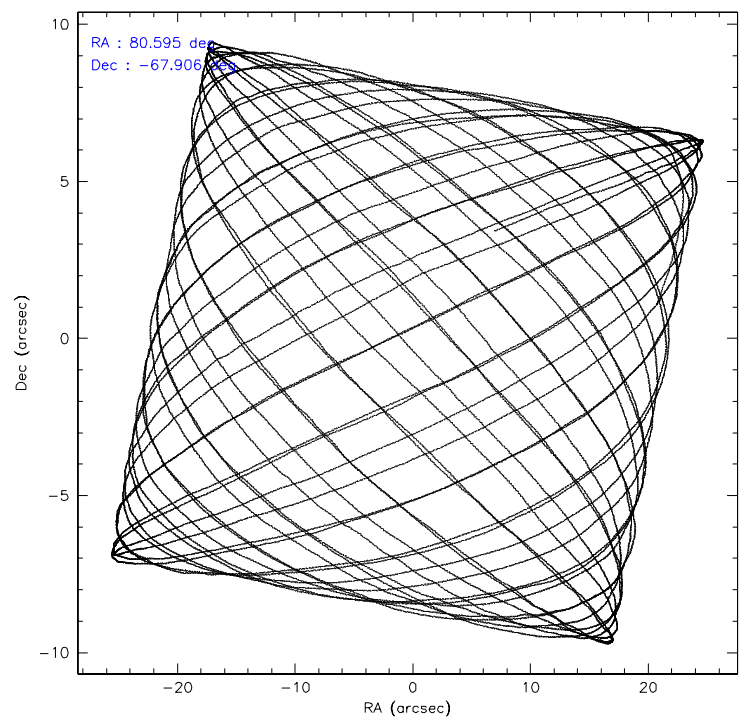
	ccd 2	ccd 3	ccd 5	ccd 6	ccd 7	ccd 8
level 1 events	116480	112738	174807	119516	165707	147231
rejected events	102190	98951	95152	103818	94932	117309
rejected %	87%	87%	54%	86%	57%	79%

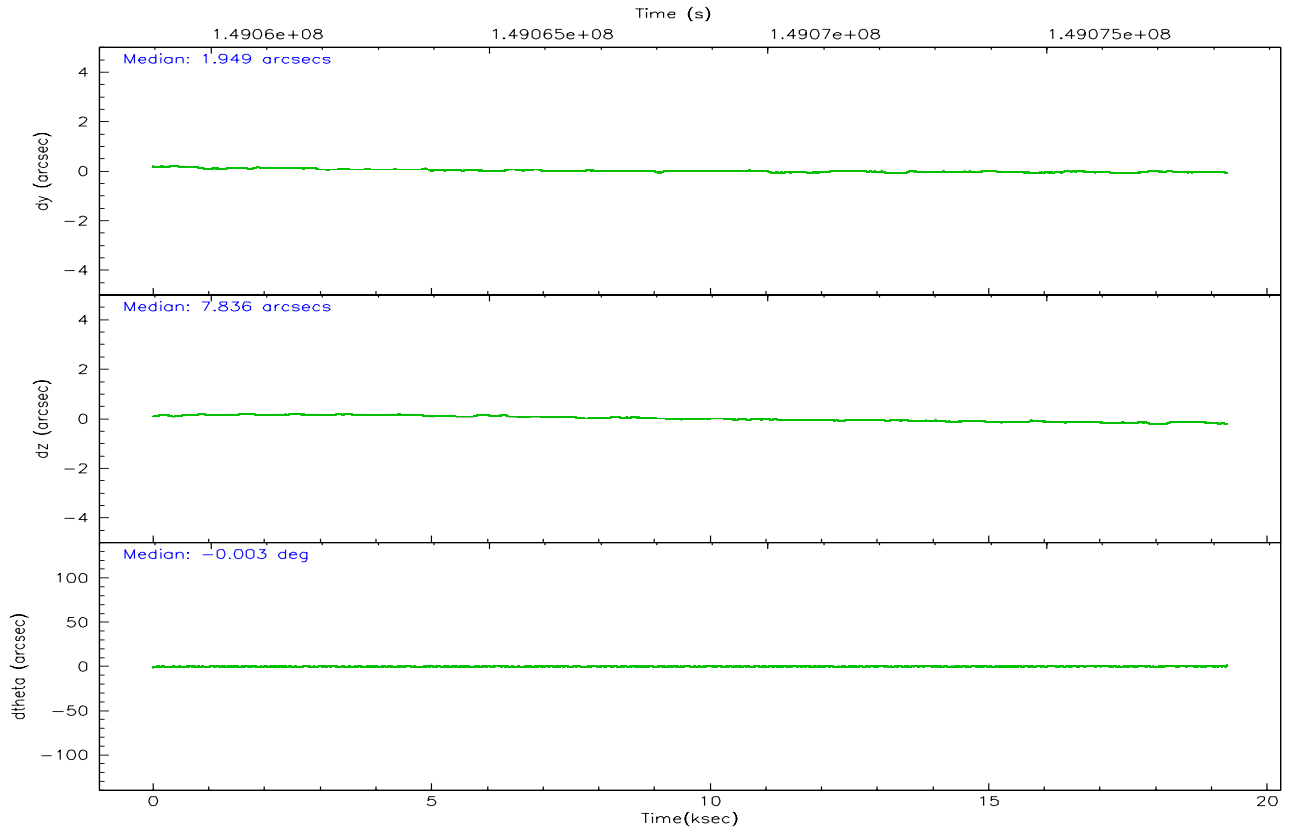
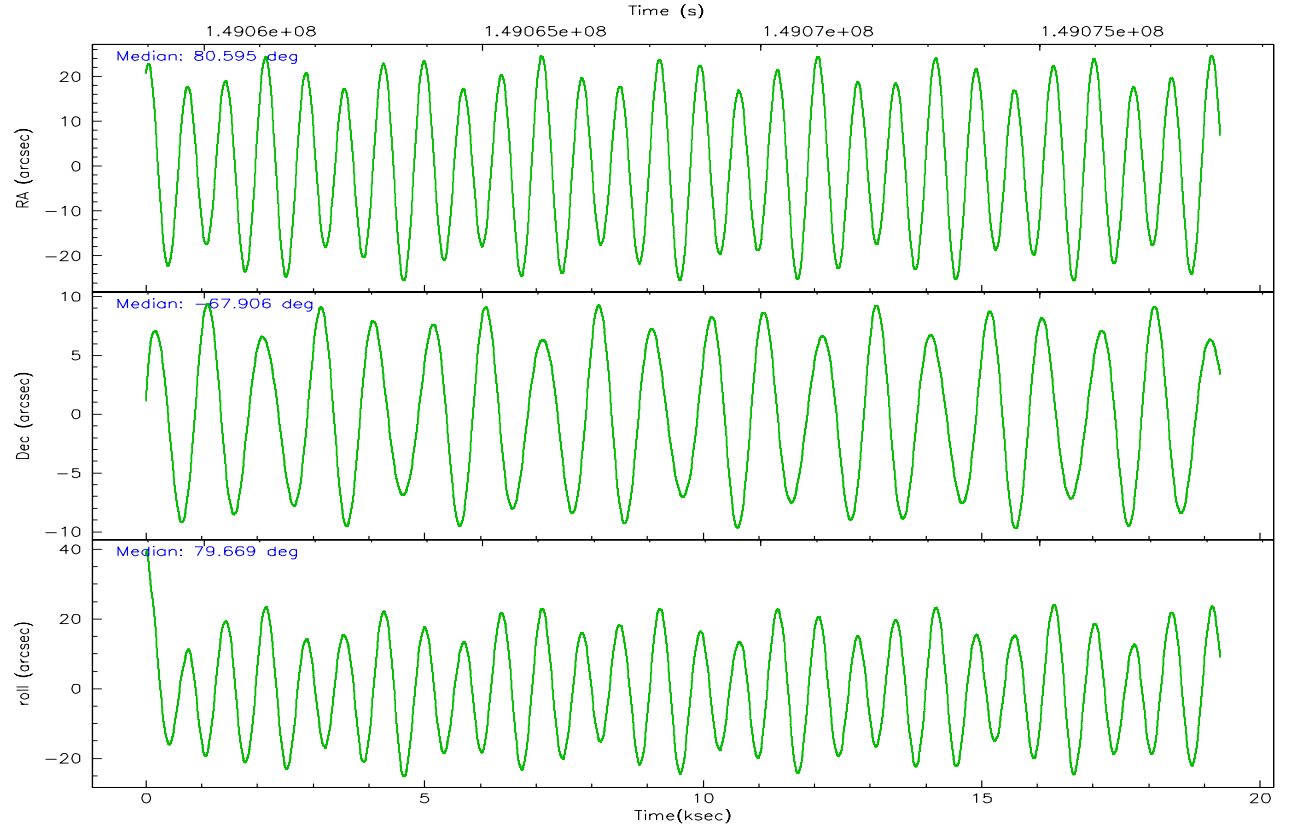
	ccd 2	ccd 3	ccd 5	ccd 6	ccd 7	ccd 8
grade 0 events	6609	6199	10466	7325	7730	9789
	5%	5%	5%	6%	4%	6%
grade 1 events	66	66	465	48	82	96
	0%	0%	0%	0%	0%	0%
grade 2 events	2760	2541	23381	2894	17663	6436
	2%	2%	13%	2%	10%	4%
grade 3 events	1386	1329	1826	1375	4493	3294
	1%	1%	1%	1%	2%	2%
grade 4 events	1306	1356	1775	1339	4347	3032
	1%	1%	1%	1%	2%	2%
grade 5 events	4488	4765	8070	5287	10355	6797
	3%	4%	4%	4%	6%	4%
grade 6 events	2229	2364	42221	2768	36557	7378
	1%	2%	24%	2%	22%	5%
grade 7 events	97636	94118	86603	98480	84480	110409
	83%	83%	49%	82%	50%	74%

2.2 Compared Parameters

Parameter	Planned	Actual	Parameter	Planned	Actual
Instrument	ACIS	ACIS	Obspar format version number	6	6
Detector	ACIS-235678	ACIS-235678	Obspar file type	PREDICTED	ACTUAL
Grating	NONE	NONE	Obspar update status	NONE	UPDATED
Data mode	FAINT	FAINT	Number of optional ACIS chips dropped	0	0
Observation mode	POINTING	POINTING	On-chip summing requested	N	N
Pointing RA	80.619418	80.59418669863565	Subarray requested	NONE	NONE
Pointing Dec	-67.931329	-67.90578428046382	Alternating exposures requested	N	N
Pointing Roll	79.545027	79.67827288703083	Primary exposure time	0.000000	3.2
SIM focus pos (mm)	-0.684267	-0.6828225247311905			
SIM defocus (mm)	0	0.001444936568705701			
SIM translation stage pos (mm)	-190.132523	-190.1400660498719			
SIM translation stage offset (mm)	0	0.00754346686406393			
Observation start time	149059250.184000	149058233.99257			
Observation start date	2002-09-22T05:19:46	2002-09-22T05:03:53			
Observation end time	149078242.184000	149078735.53092			
Observation end date	2002-09-22T10:36:18	2002-09-22T10:45:35			
Read mode	TIMED	TIMED			

2.3 Aspect



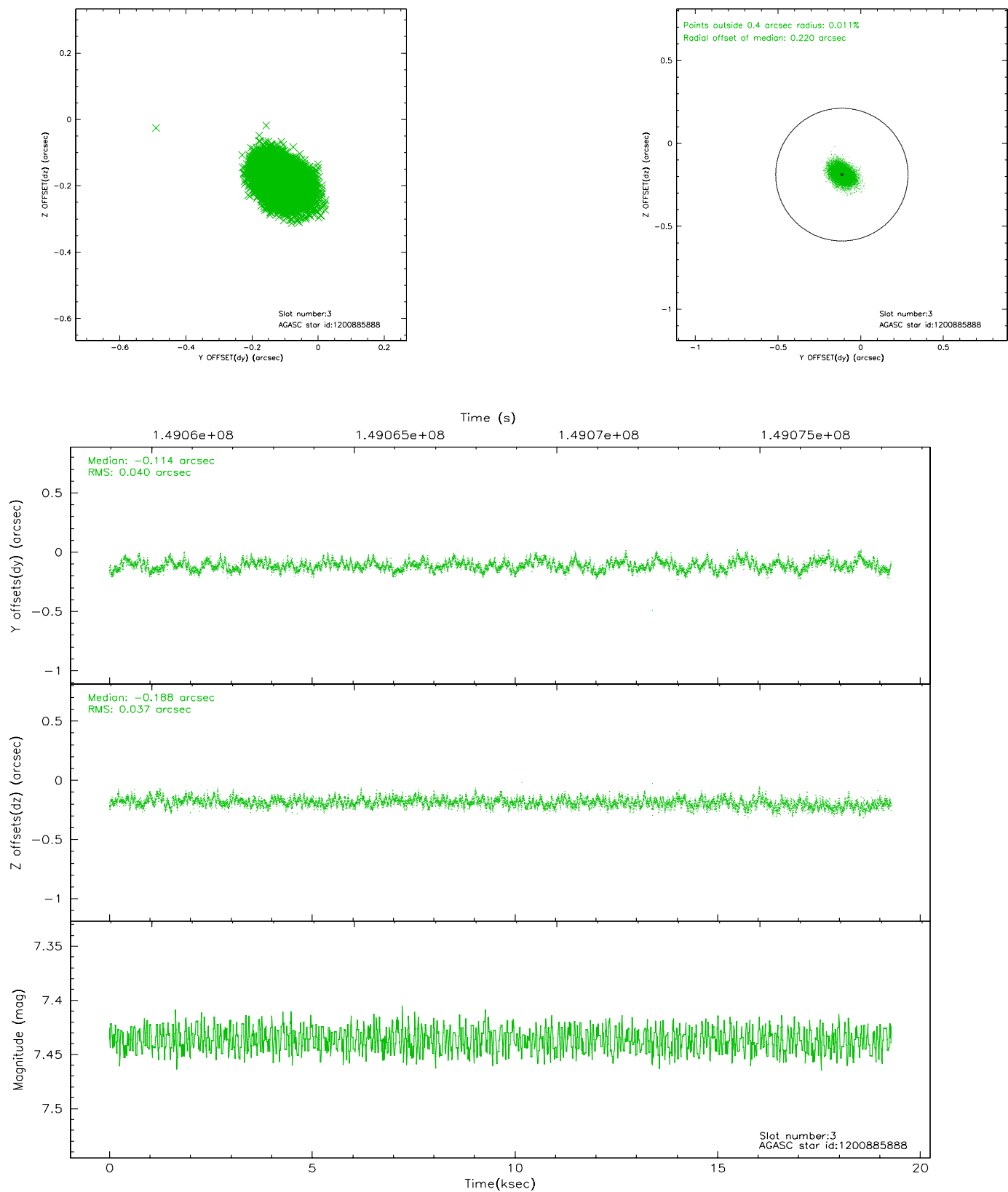


Slot Statistics

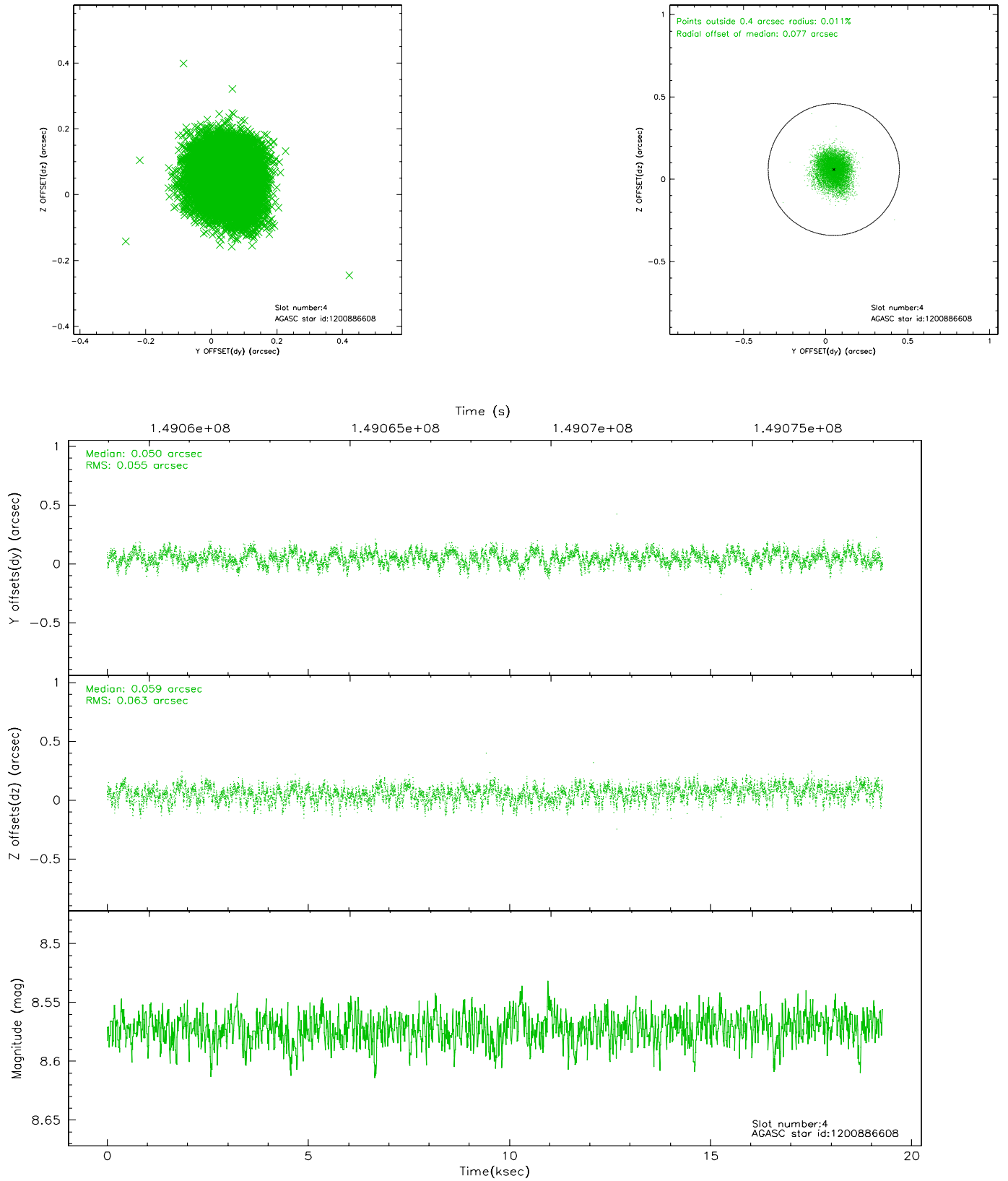
slot	status	id	mag	n_pts	med_dy	med_dz	dr1	dr2	ra	dec	mean_y	mean_z
0	FID	ACIS-S-2	7.11	4704	-0.013	0.012	0.008	0.017	0.000000	0.000000	-754.61	-1729.01
1	FID	ACIS-S-4	7.20	4704	-0.049	0.003	0.008	0.022	0.000000	0.000000	2158.56	179.22
2	FID	ACIS-S-5	7.24	4703	0.033	-0.007	0.008	0.018	0.000000	0.000000	-1807.13	173.15
3	GUIDE	1200885888	7.44	9407	-0.114	-0.188	0.058	0.093	78.906599	-68.068566	-936.23	2169.48
4	GUIDE	1200886608	8.57	9407	0.050	0.059	0.091	0.142	81.928825	-68.074201	-205.10	-1826.58
5	GUIDE	1165236552	9.06	9400	-0.004	-0.096	0.074	0.121	80.650919	-67.357955	2037.12	332.41
6	GUIDE	1200886080	9.49	9407	0.132	0.064	0.123	0.196	79.345965	-68.471974	-2236.82	1298.43
7	GUIDE	1200883008	9.62	9401	-0.069	0.163	0.131	0.218	82.494991	-67.740162	1102.26	-2395.86

2.4 Star Slots

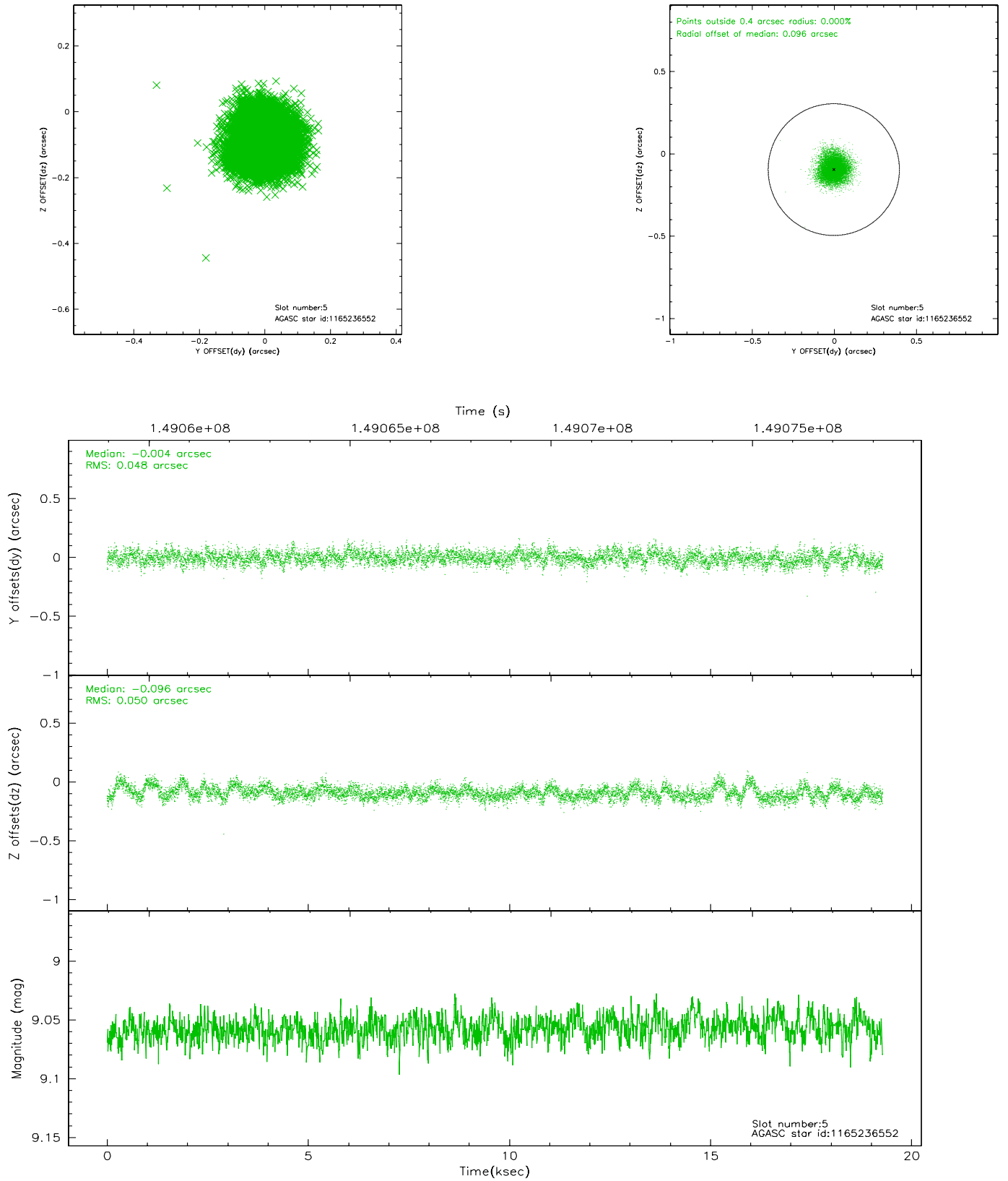
2.4.1 Slot 3



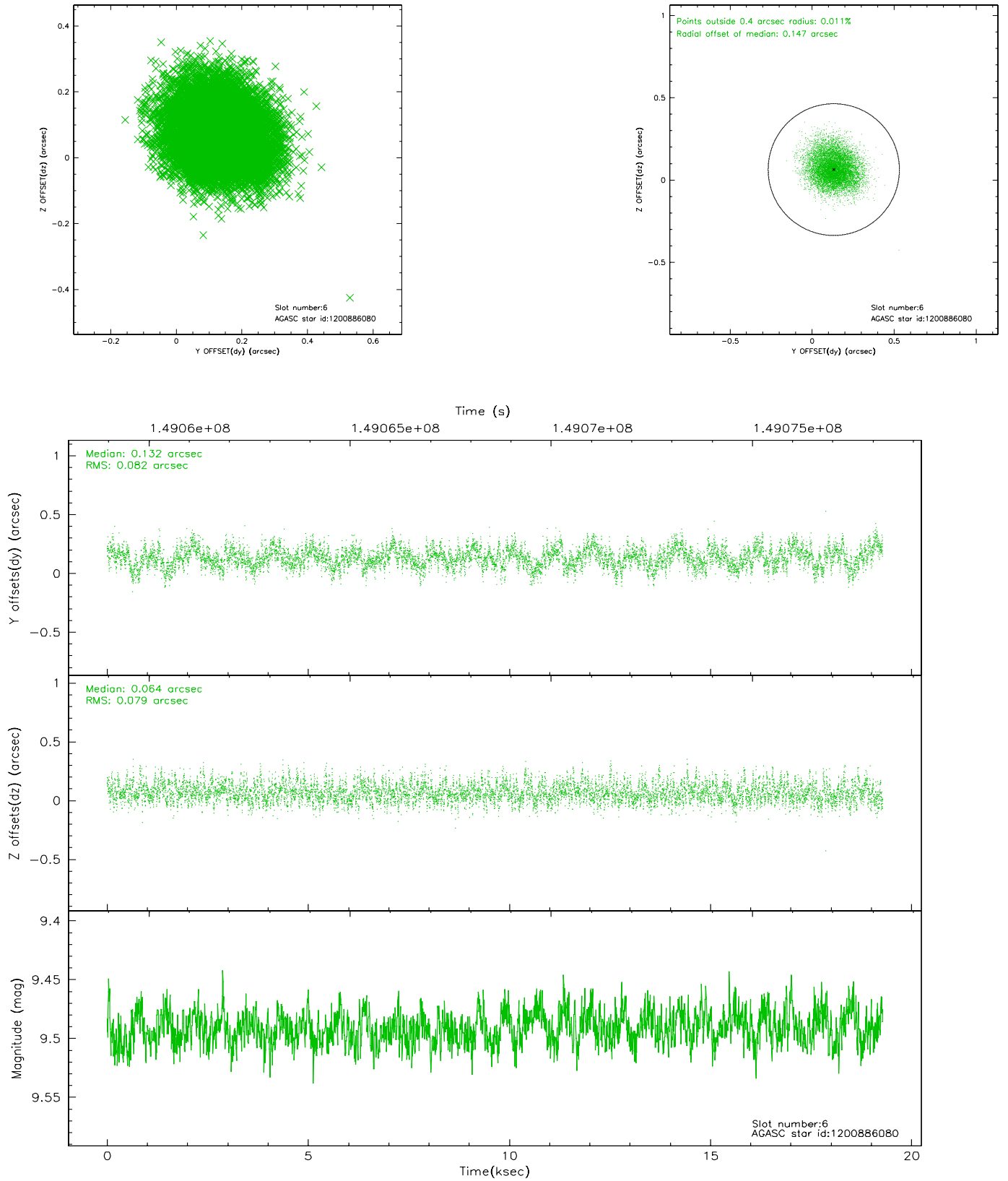
2.4.2 Slot 4



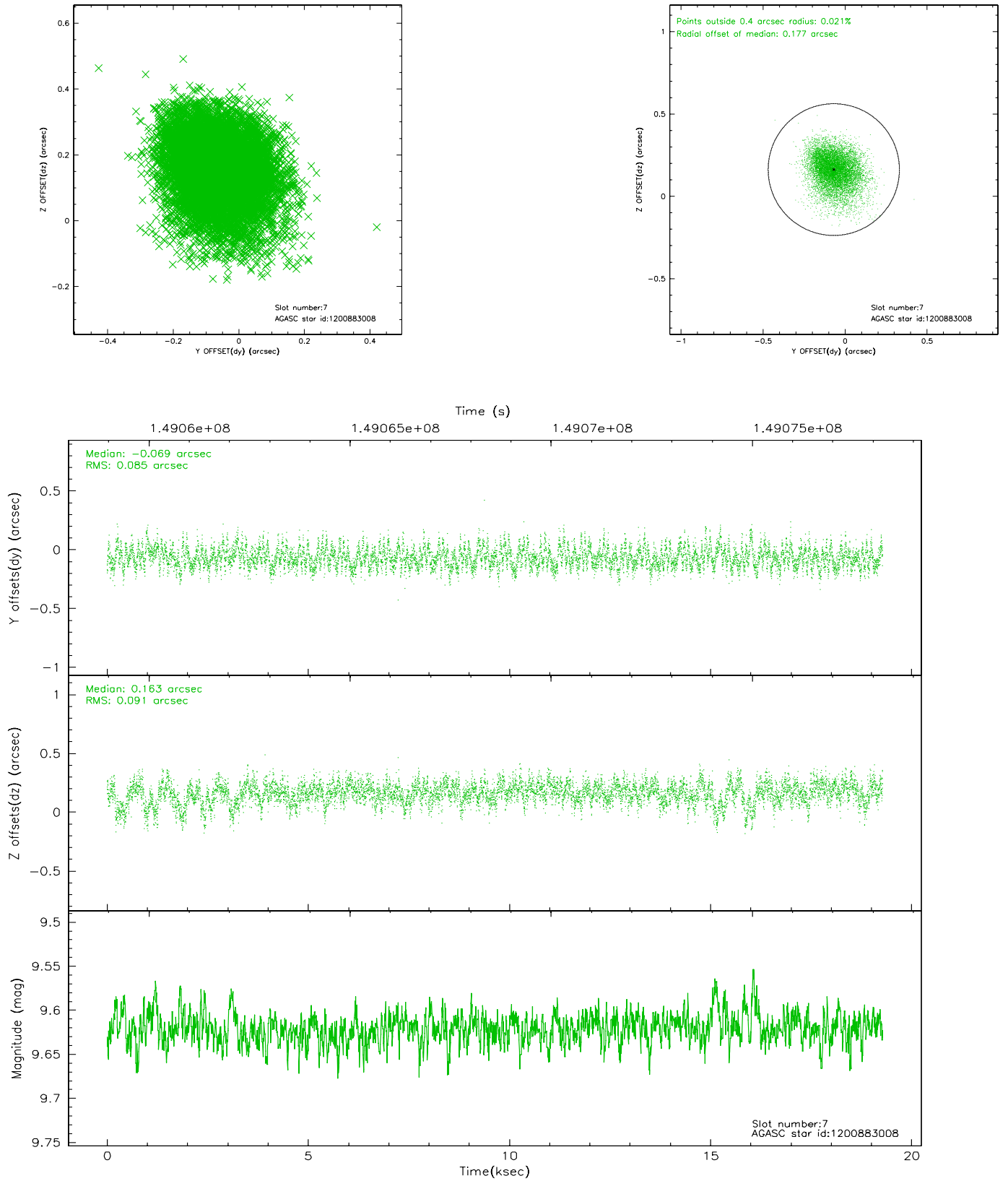
2.4.3 Slot 5



2.4.4 Slot 6

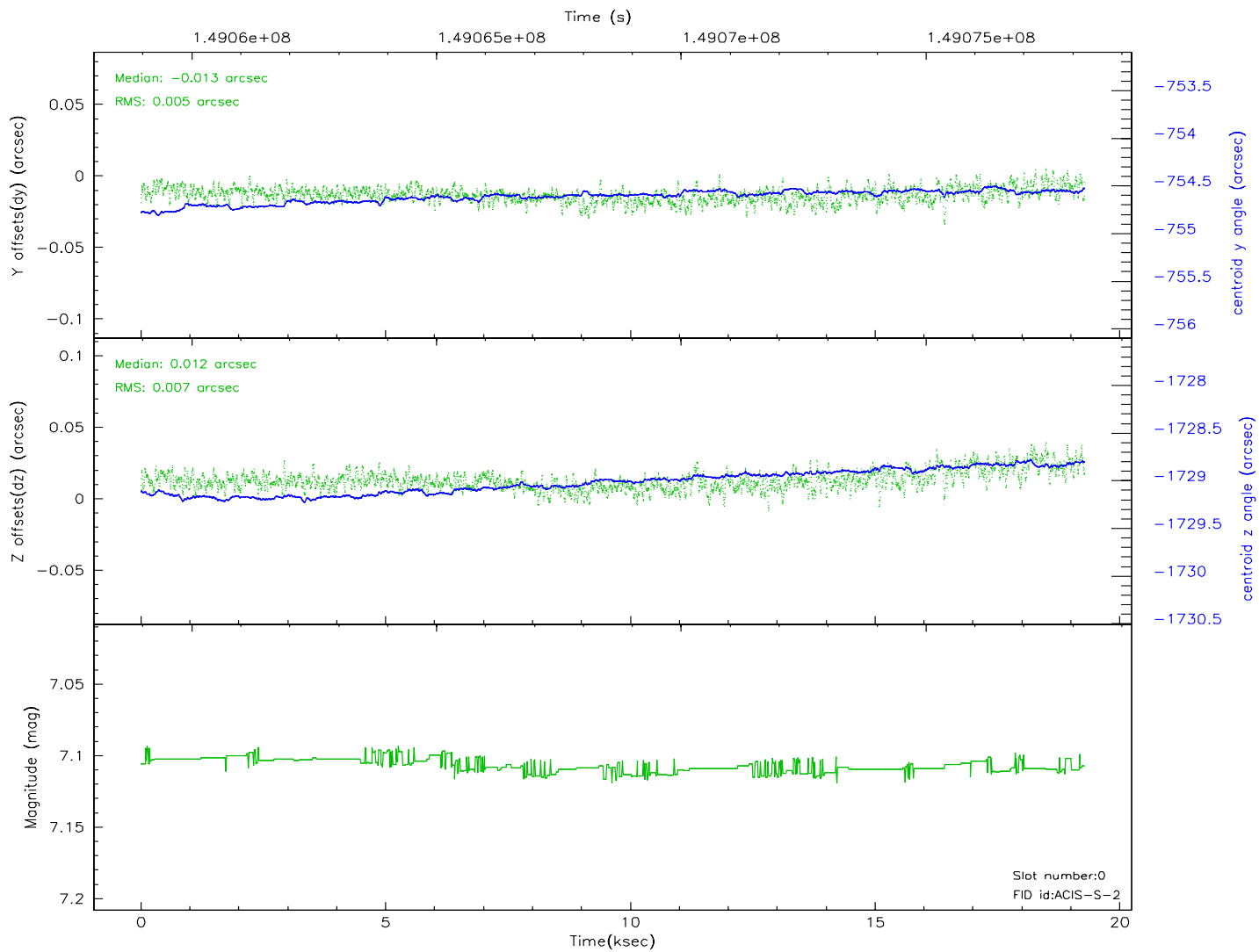
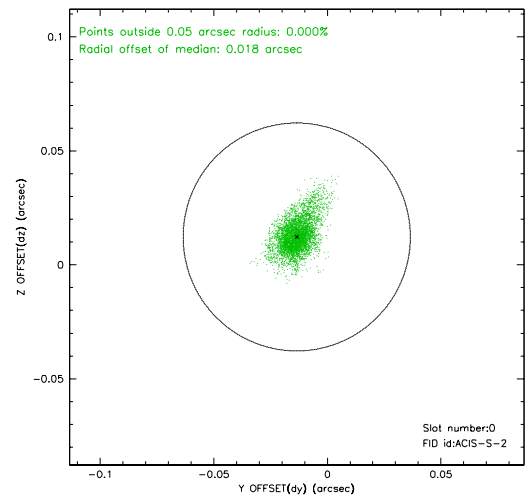
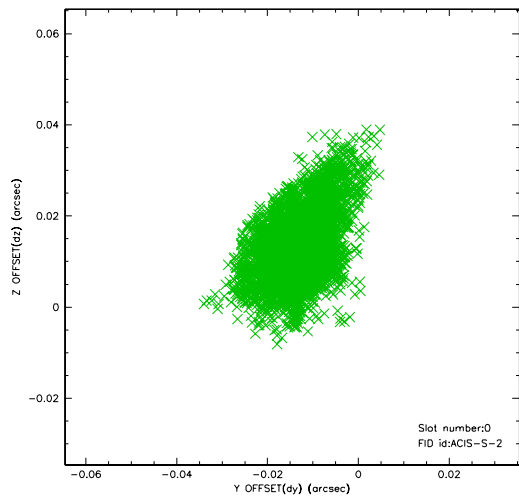


2.4.5 Slot 7

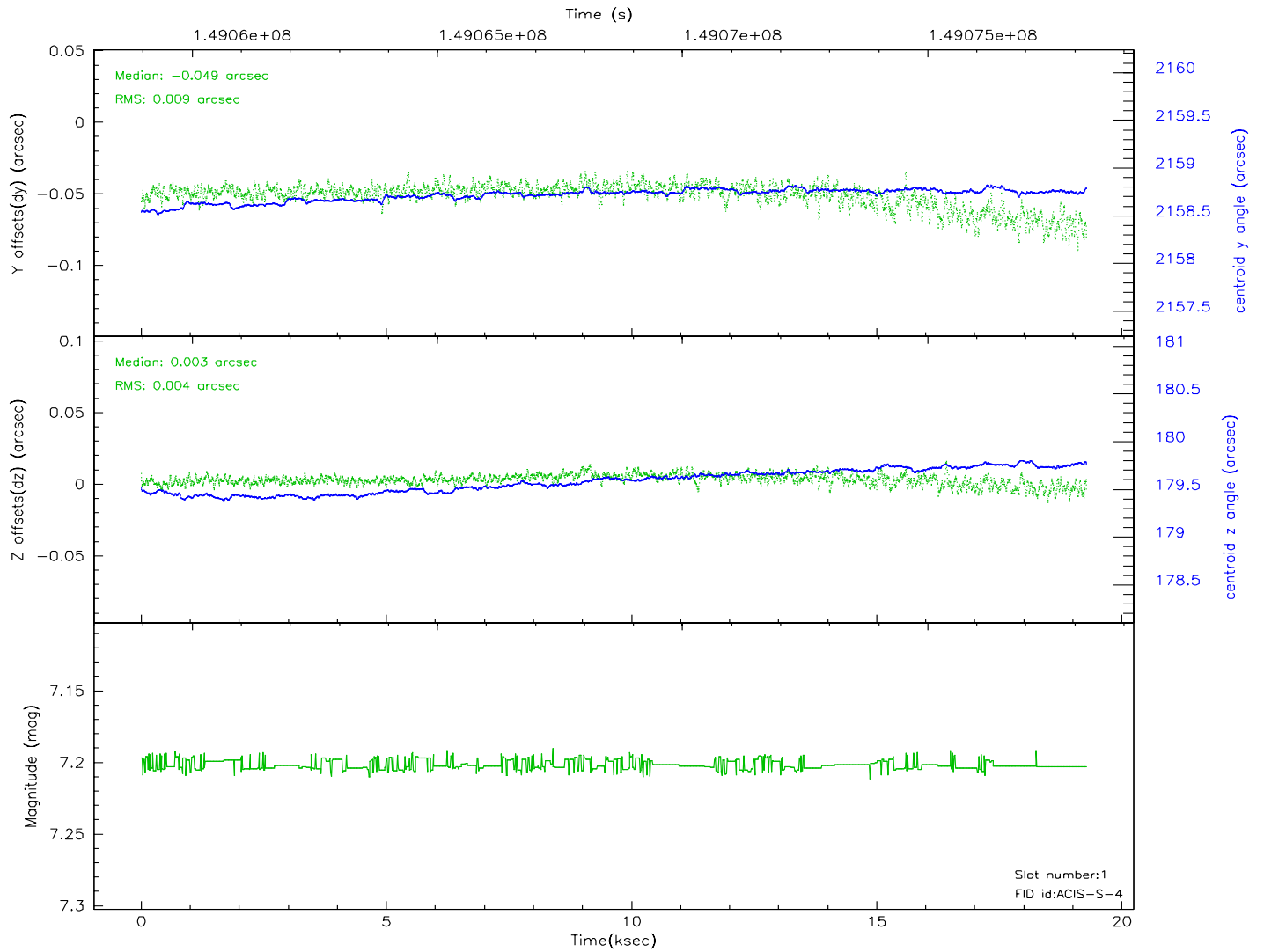
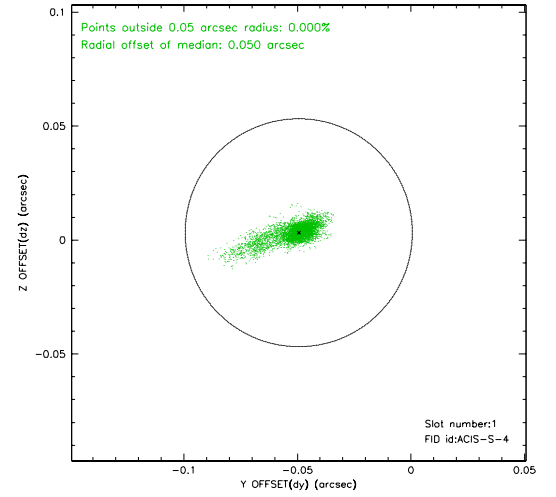
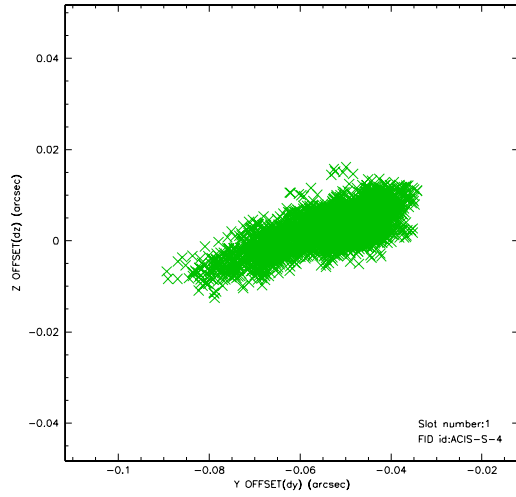


2.5 FID Slots

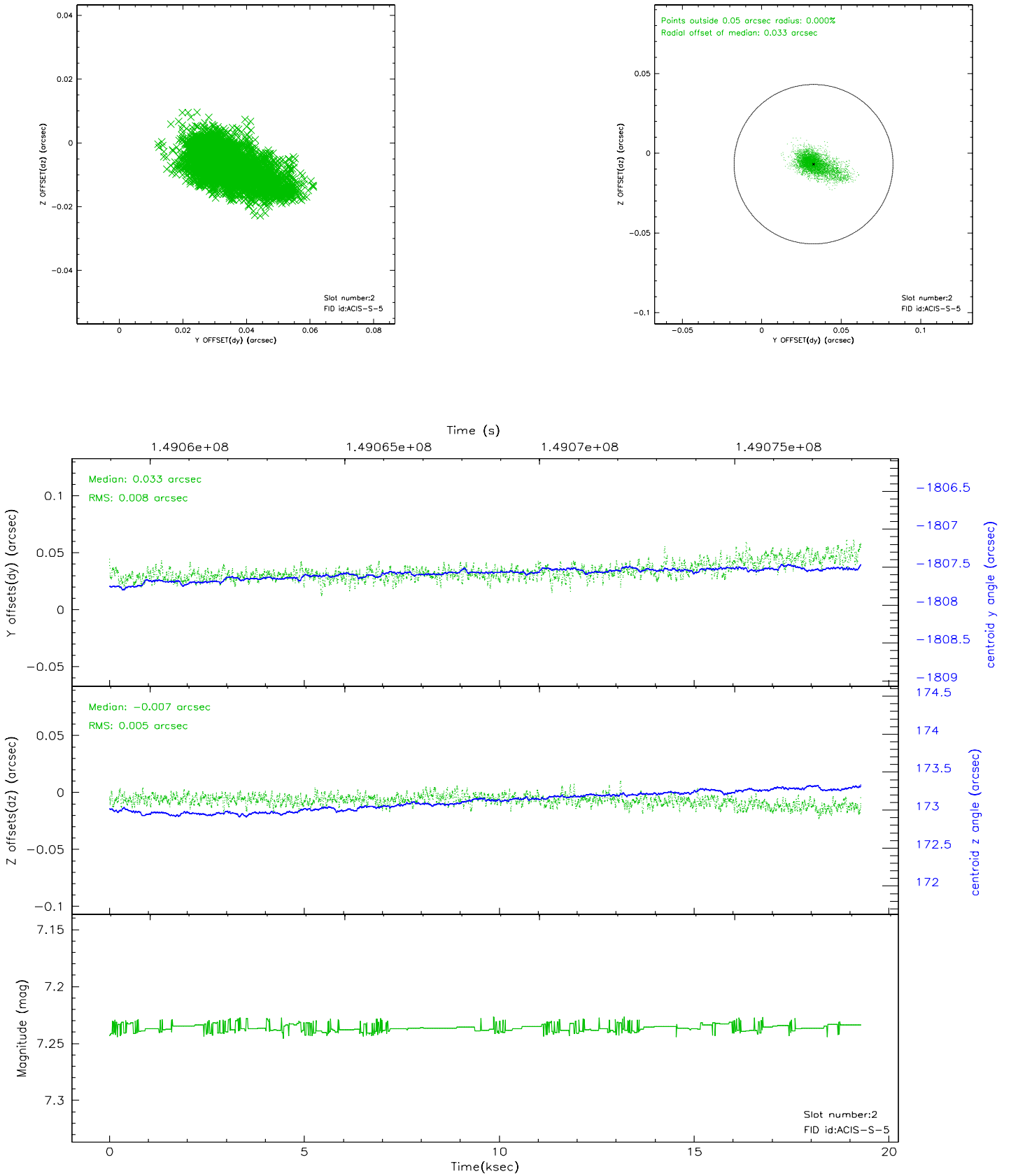
2.5.1 Slot 0



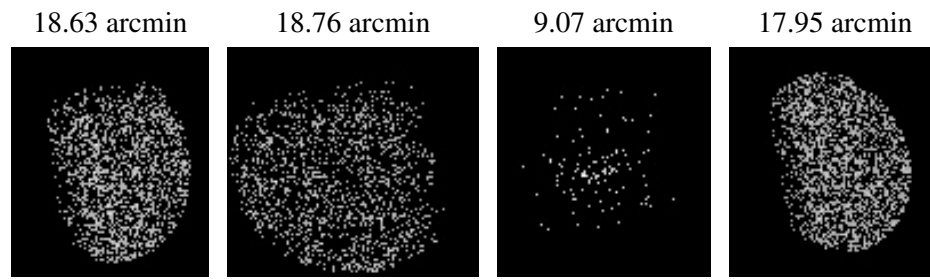
2.5.2 Slot 1



2.5.3 Slot 2



3 Point Sources



A Summary

A.1 Status

V&V Scientist	Jen Lauer
V&V Date (YYYY-MM-DD)	2006.10.04
V&V Edition	1
V&V Disposition and Status	OK
V&V Charge Time	18.953

A.2 Comments

Roll preference met.