

V&V Reference Report

L2 ASCDS Version : 7.6.9

Observation 3355 - L2 Version 001
Chandra X-Ray Center

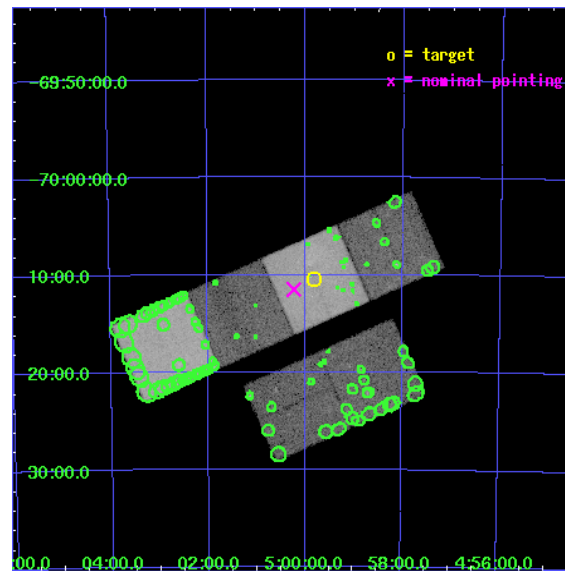
L2 Processing Date : Oct 18 2006

Contents

1	Front	2
2	OBI	3
2.1	OBI	3
2.1.1	Images	3
2.1.2	Bias	3
2.1.3	Parameters	4
2.1.4	Events	4
2.2	Compared Parameters	5
2.3	Aspect	6
2.4	Star Slots	9
2.4.1	Slot 3	9
2.4.2	Slot 4	10
2.4.3	Slot 5	11
2.4.4	Slot 6	12
2.4.5	Slot 7	13
2.5	FID Slots	14
2.5.1	Slot 0	14
2.5.2	Slot 1	15
2.5.3	Slot 2	16
3	Point Sources	17
A	Summary	18
A.1	Status	18
A.2	Comments	18

1 Front

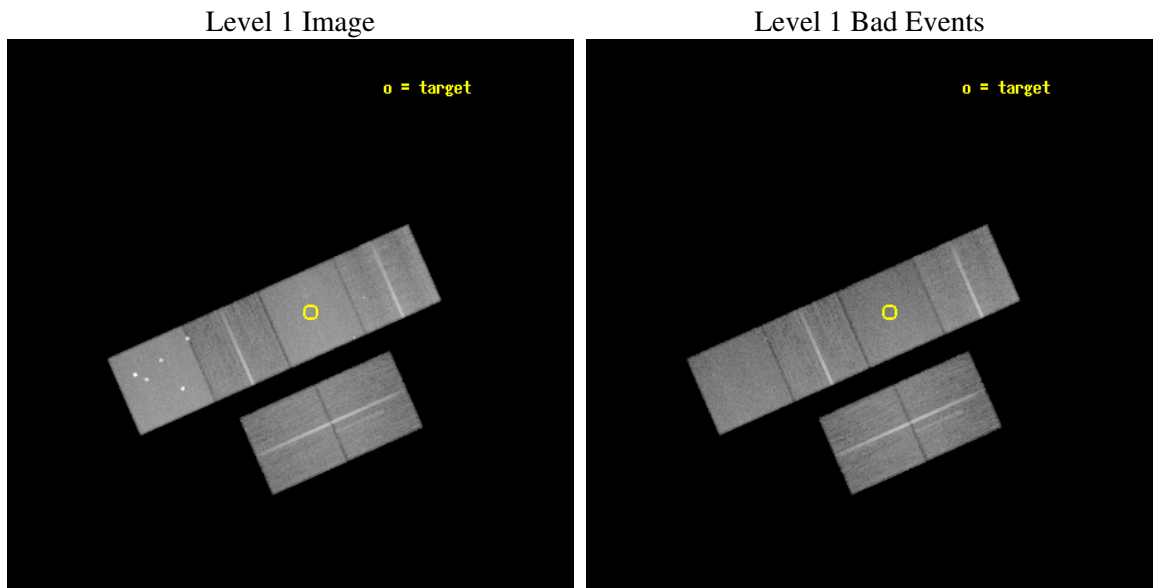
seq_num	900194
obs_id	3355
title	X-RAY EMISSION MECHANISMS AND EVOLUTION OF SUPERBUBBLES
observer	DR. Sally Oey
object	DEM L50
dtcycle	0
cycle	P
ra_targ	74.954167
dec_targ	-70.174444
ra_nom	75.057215077731
dec_nom	-70.191879128003
roll_nom	336.128159656
revision	2
ontime	37756.799859345
livetime	37278.700525111
ontime2	37753.558889061
ontime3	37756.799859345
ontime5	37756.799859345
ontime6	37756.799859345
ontime7	37756.799859345
ontime8	37750.318008572
l2events	378635



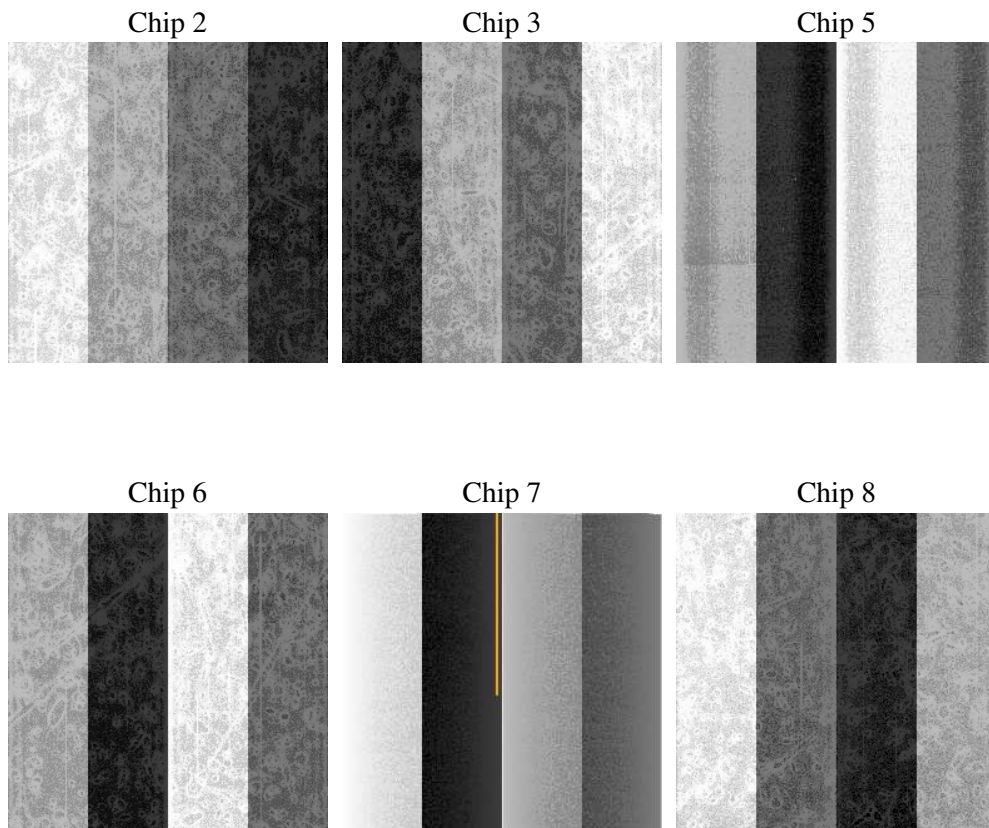
2 OBI

2.1 OBI

2.1.1 Images



2.1.2 Bias



2.1.3 Parameters

obi_num	1
ascdsver	7.6.9
caldsver	3.2.3
date	2006-10-18T18:05:42
revision	2

sched_exp_time	38000.000000
ontime	37760.896467924
ontime2	37757.65549764
ontime3	37760.896467924
ontime5	37760.896467924
ontime6	37760.896467924
ontime7	37760.896467924
ontime8	37754.414517492
l1events	1721874

2.1.4 Events

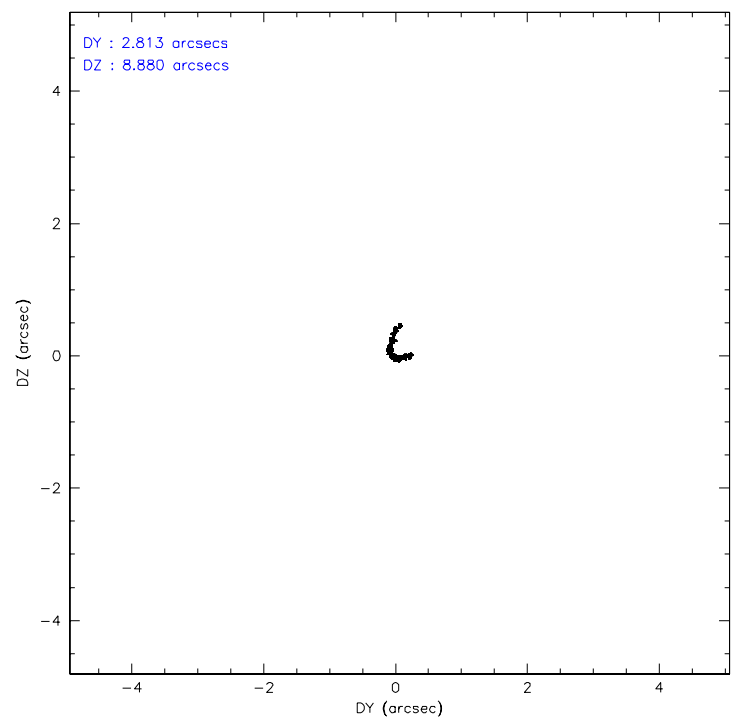
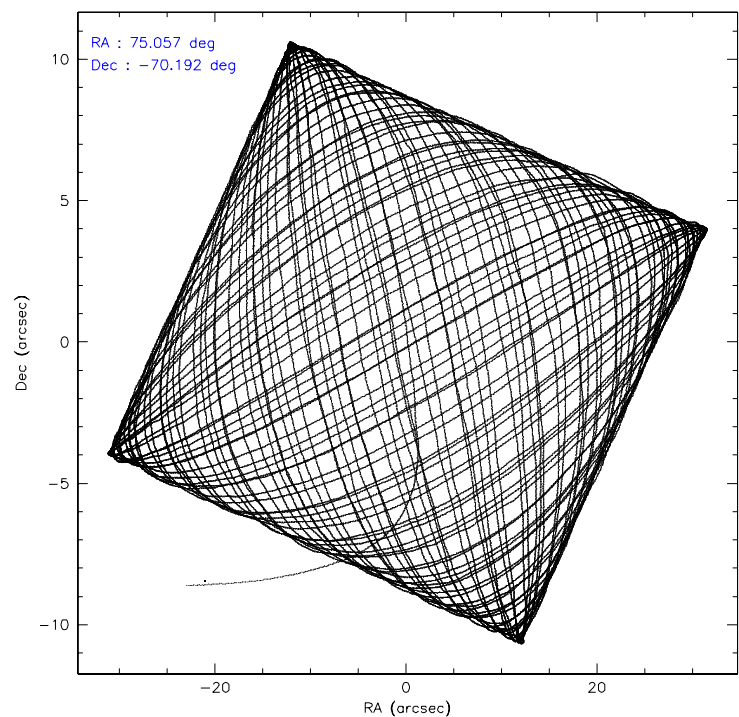
	ccd 2	ccd 3	ccd 5	ccd 6	ccd 7	ccd 8
level 1 events	245722	235445	367756	242012	327119	303820
rejected events	216608	207603	195824	213037	195300	241289
rejected %	88%	88%	53%	88%	59%	79%

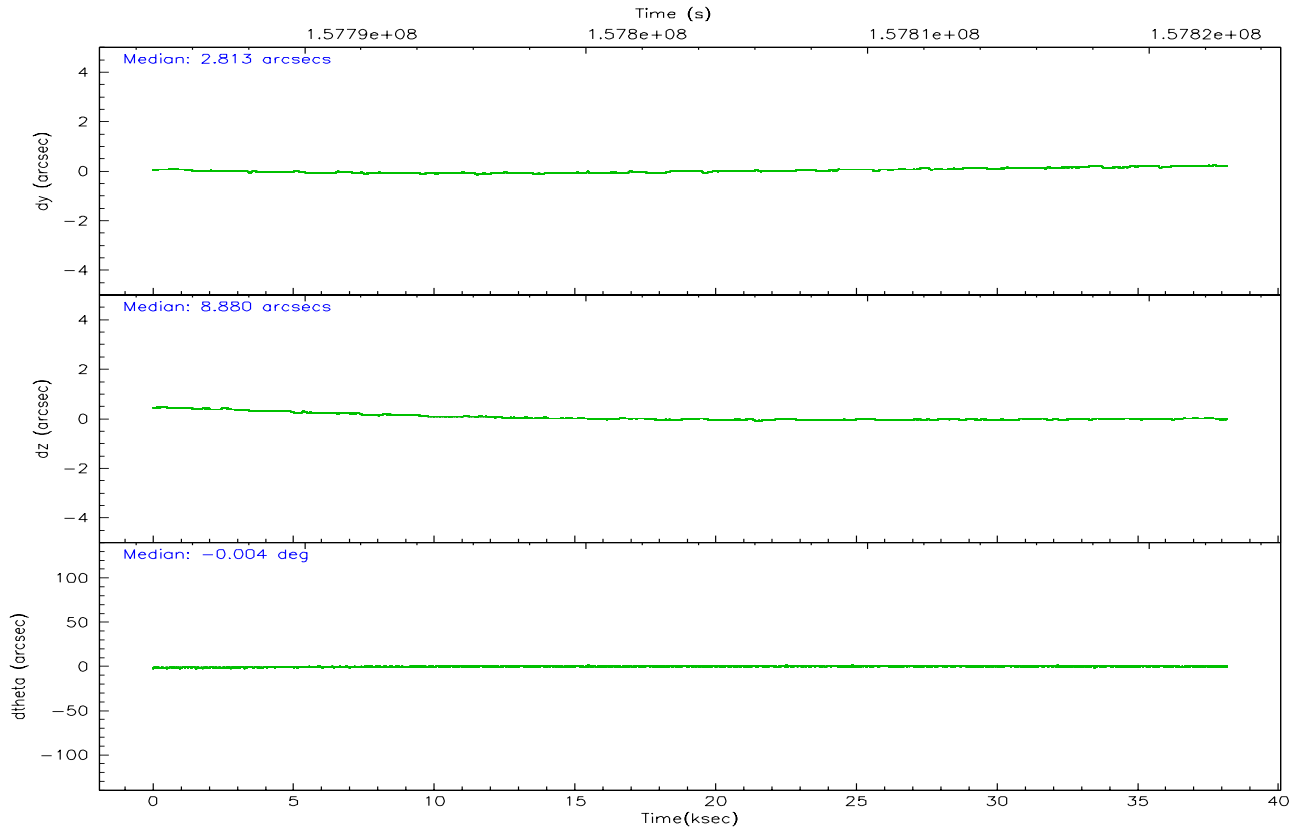
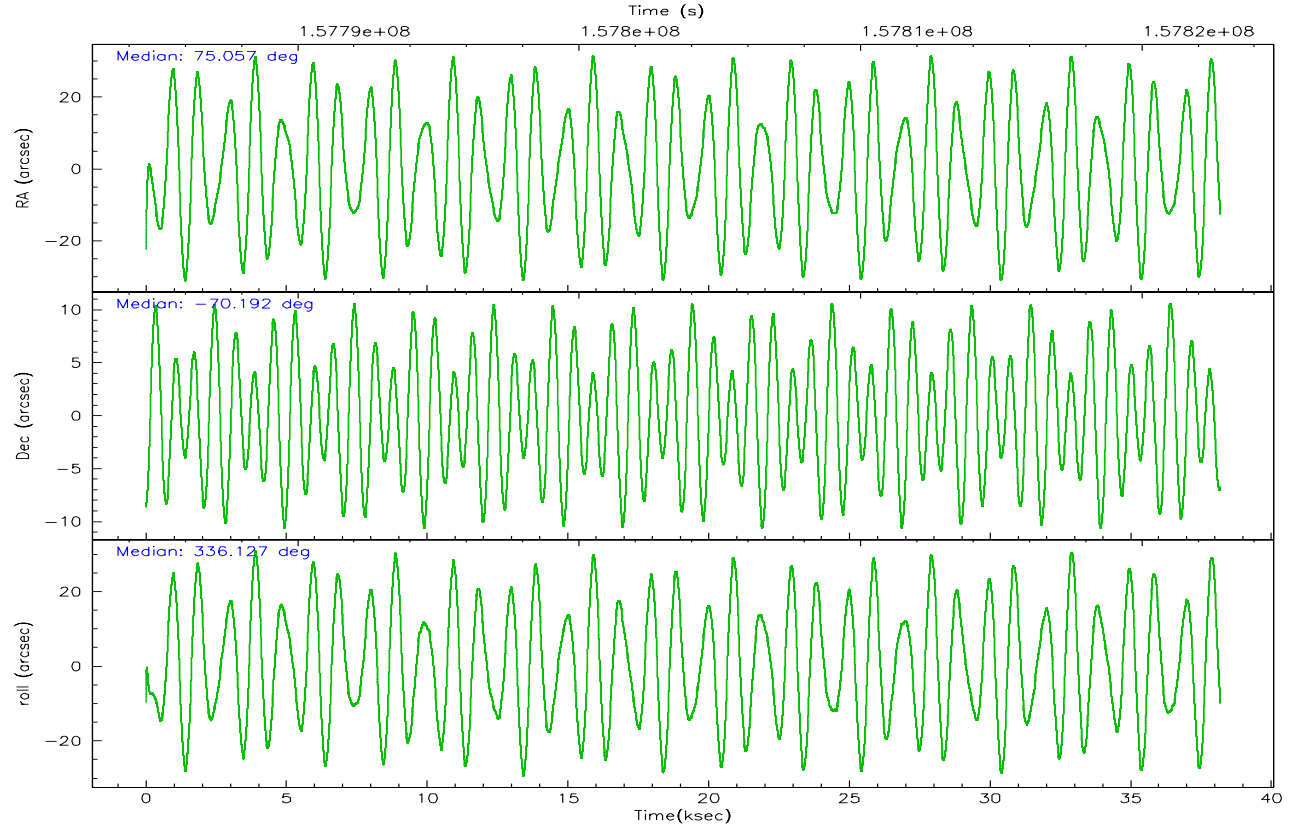
	ccd 2	ccd 3	ccd 5	ccd 6	ccd 7	ccd 8
grade 0 events	13219	12457	25045	12199	11170	20747
	5%	5%	6%	5%	3%	6%
grade 1 events	145	121	414	122	185	201
	0%	0%	0%	0%	0%	0%
grade 2 events	5705	5127	52105	5610	32701	13383
	2%	2%	14%	2%	9%	4%
grade 3 events	2789	2809	3767	2917	7568	6632
	1%	1%	1%	1%	2%	2%
grade 4 events	2622	2783	3571	2767	7273	6133
	1%	1%	0%	1%	2%	2%
grade 5 events	9337	10208	17643	10829	21405	13870
	3%	4%	4%	4%	6%	4%
grade 6 events	4784	4668	87462	5484	73121	15643
	1%	1%	23%	2%	22%	5%
grade 7 events	207121	197272	177749	202084	173696	227211
	84%	83%	48%	83%	53%	74%

2.2 Compared Parameters

Parameter	Planned	Actual	Parameter	Planned	Actual
Instrument	ACIS	ACIS	Obspar format version number	6	6
Detector	ACIS-235678	ACIS-235678	Obspar file type	PREDICTED	ACTUAL
Grating	NONE	NONE	Obspar update status	NONE	UPDATED
Observation mode	POINTING	POINTING	Number of optional ACIS chips dropped	0	0
Pointing RA	74.977467	75.05721507773127	On-chip summing requested	N	N
Pointing Dec	-70.195131	-70.1918791280026	Subarray requested	NONE	NONE
Pointing Roll	335.896499	336.1281596560009	Alternating exposures requested	N	N
SIM focus pos (mm)	-0.684267	-0.6828225247311905	Primary exposure time	0.000000	3.2
SIM defocus (mm)	0	0.001444936568705701			
SIM translation stage pos (mm)	-190.132523	-190.1400660498719			
SIM translation stage offset (mm)	0	0.00754346686406393			
Observation start time	157784790.184000	157783943.53052			
Observation start date	2003-01-01T05:05:26	2003-01-01T04:52:23			
Observation end time	157822790.184000	157823577.20717			
Observation end date	2003-01-01T15:38:46	2003-01-01T15:52:57			
Read mode	TIMED	TIMED			

2.3 Aspect



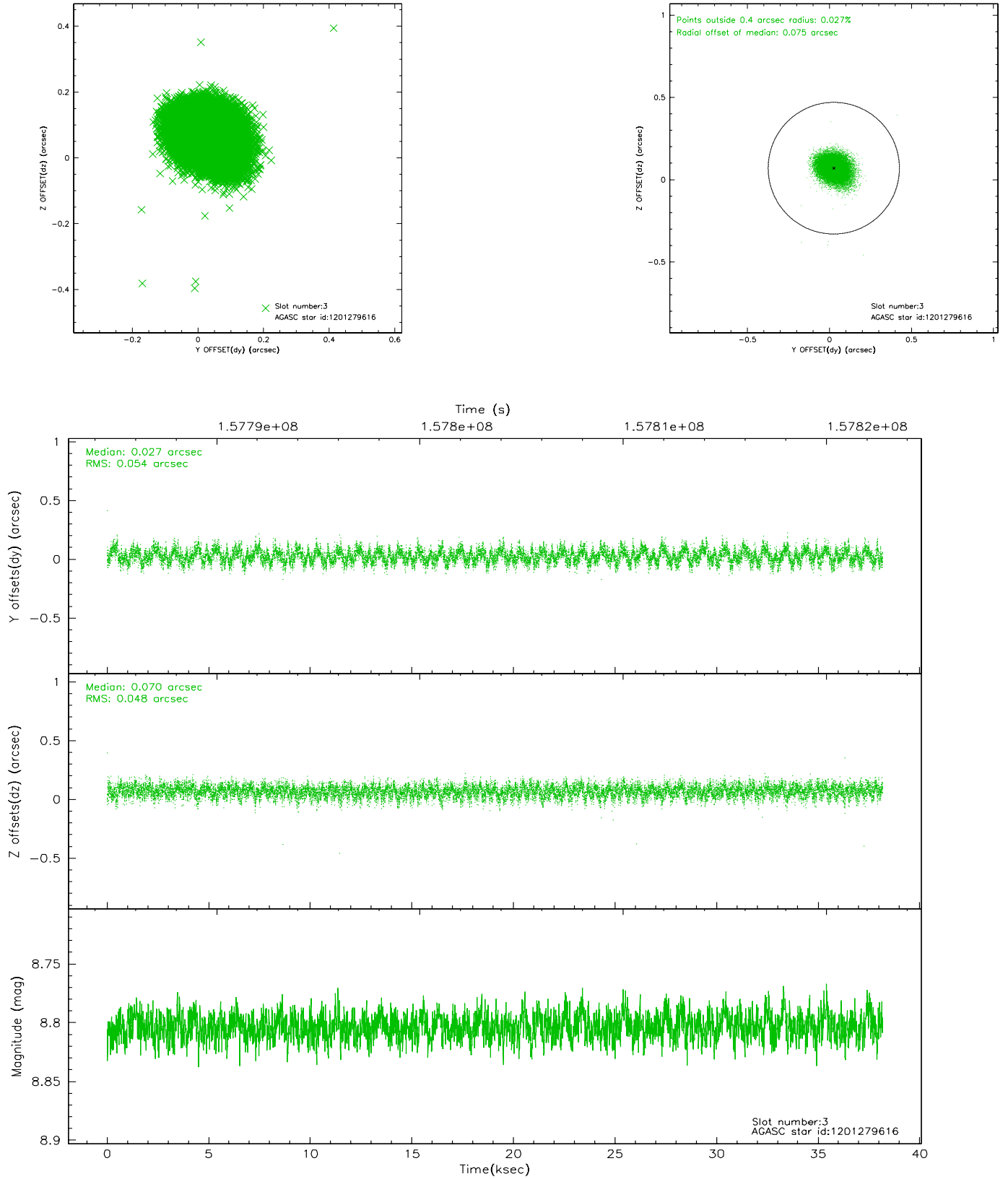


Slot Statistics

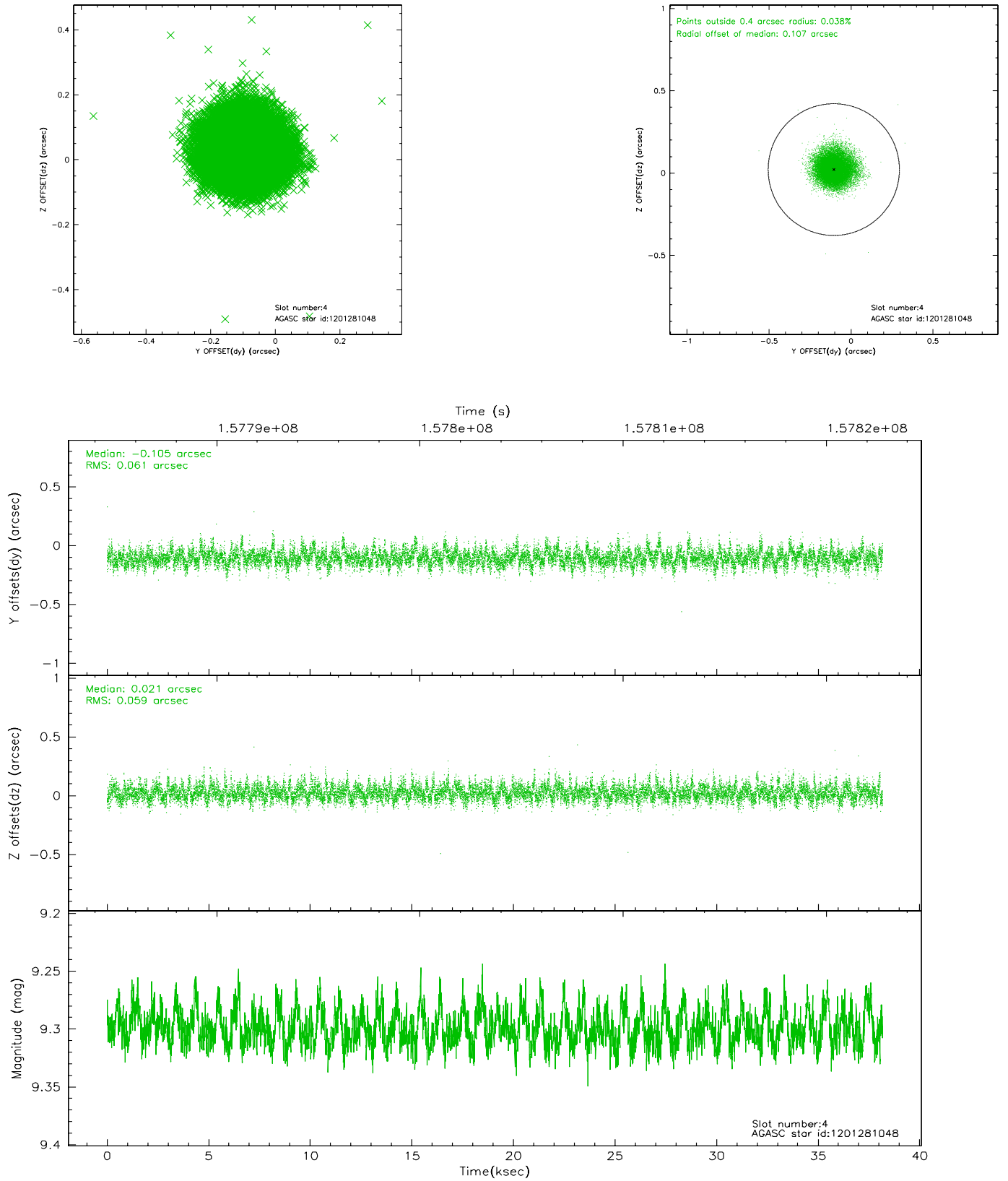
slot	status	id	mag	n_pts	med_dy	med_dz	dr1	dr2	ra	dec	mean_y	mean_z
0	FID	ACIS-S-2	7.11	9311	-0.015	0.013	0.008	0.012	0.000000	0.000000	-755.49	-1730.16
1	FID	ACIS-S-4	7.20	9311	-0.036	0.004	0.007	0.012	0.000000	0.000000	2157.75	178.30
2	FID	ACIS-S-5	7.24	9312	0.019	-0.008	0.008	0.013	0.000000	0.000000	-1808.27	171.97
3	GUIDE	1201279616	8.80	18617	0.027	0.070	0.077	0.123	74.529880	-70.149234	-565.65	-74.14
4	GUIDE	1201281048	9.30	18609	-0.105	0.021	0.090	0.147	76.036344	-70.680228	1869.13	-1088.82
5	GUIDE	1201281896	9.60	18617	0.090	-0.001	0.096	0.163	73.040481	-70.065308	-2344.64	-578.50
6	GUIDE	1201279608	9.66	18611	0.132	-0.081	0.119	0.190	73.872627	-70.293655	-1073.93	-882.43
7	GUIDE	1201281528	8.84	18621	-0.144	-0.012	0.081	0.132	76.504754	-70.682300	2385.84	-878.72

2.4 Star Slots

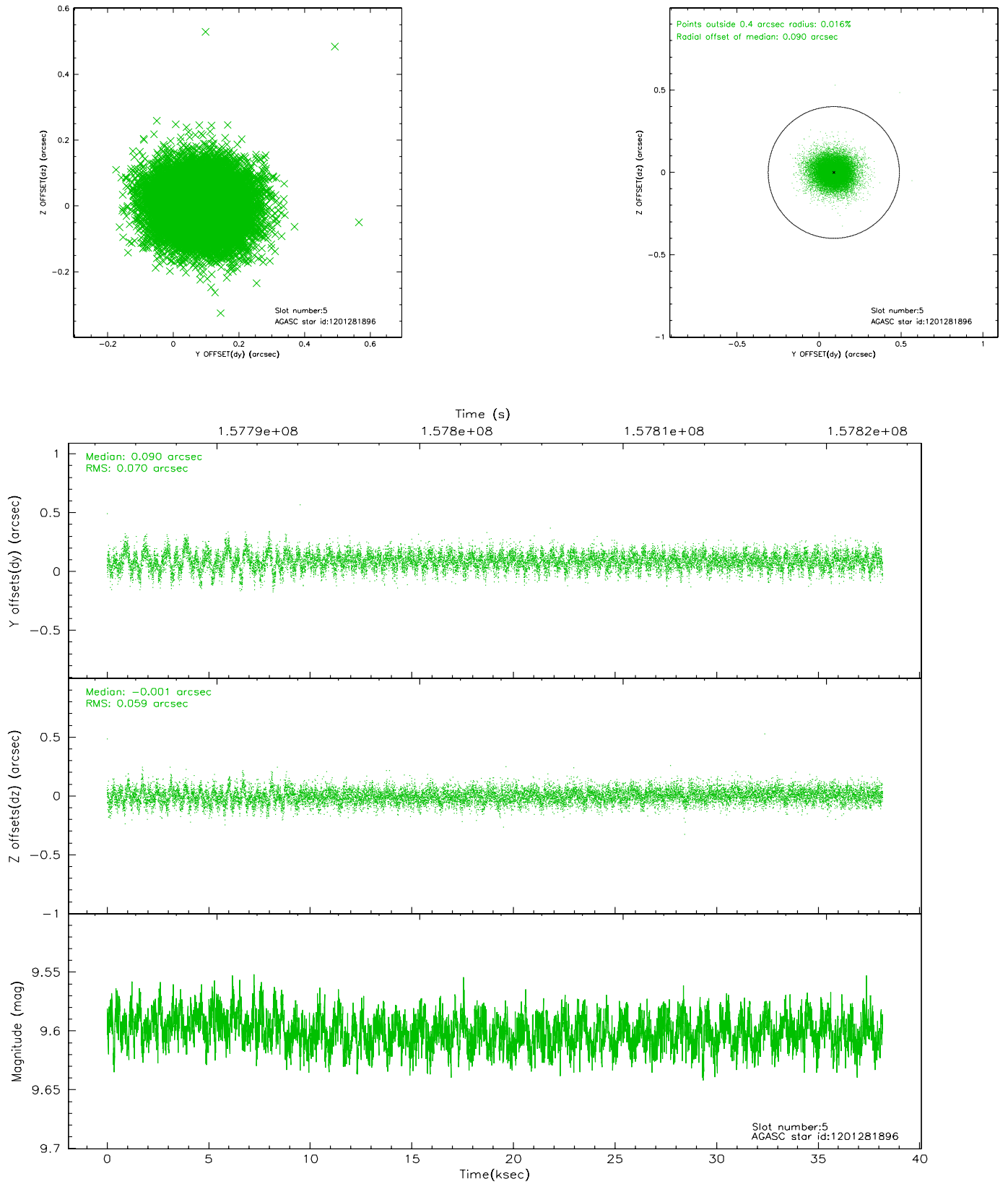
2.4.1 Slot 3



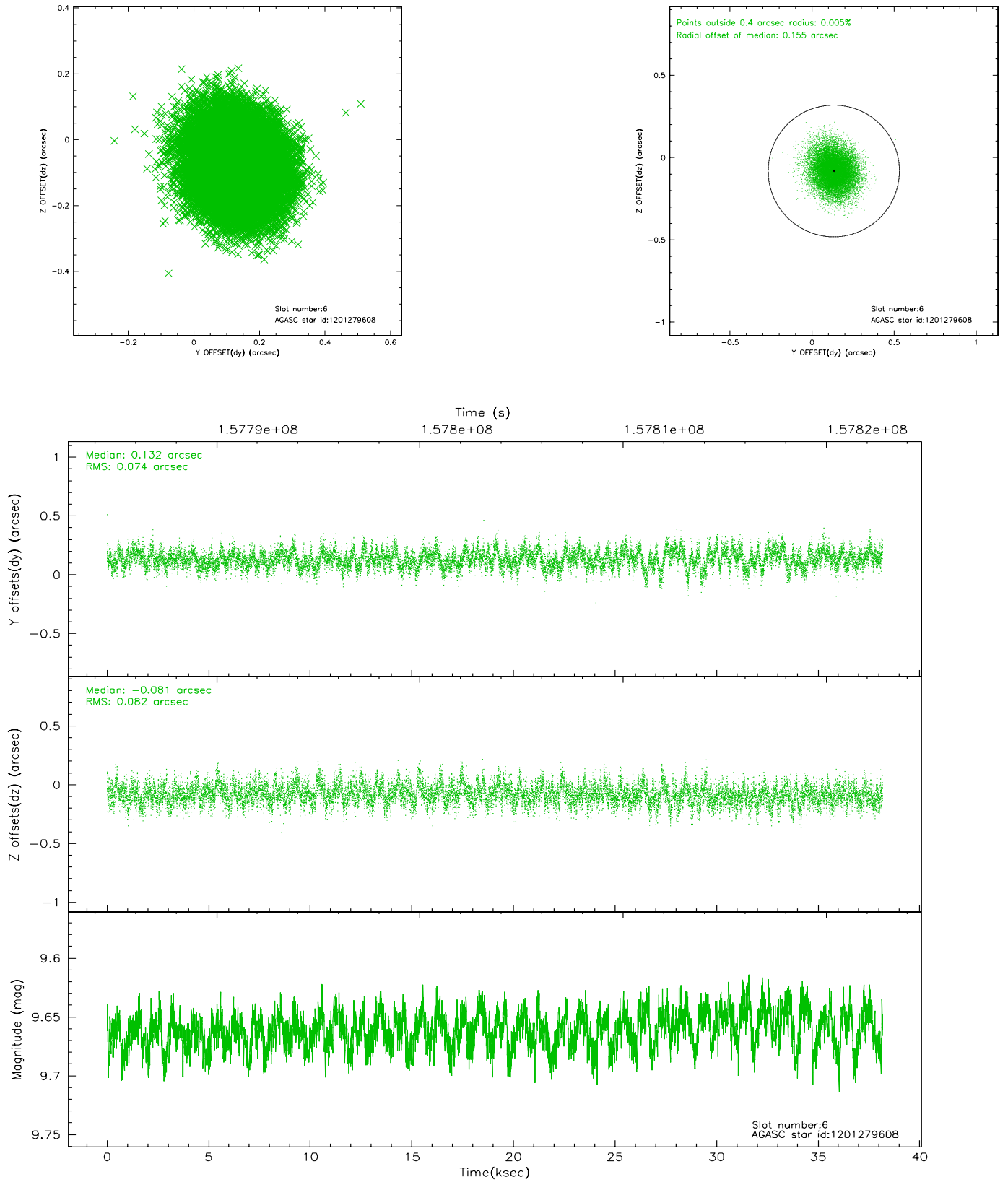
2.4.2 Slot 4



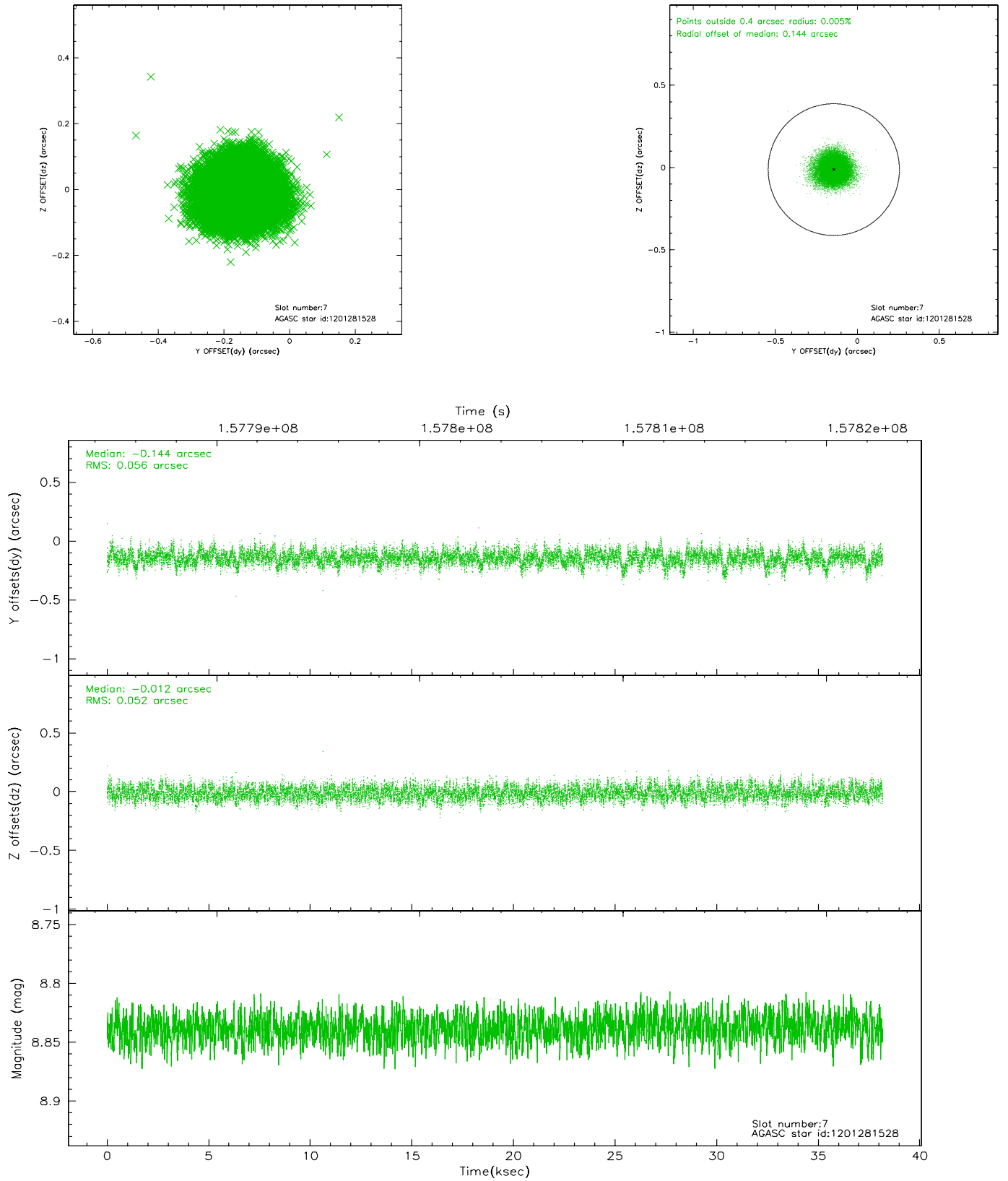
2.4.3 Slot 5



2.4.4 Slot 6

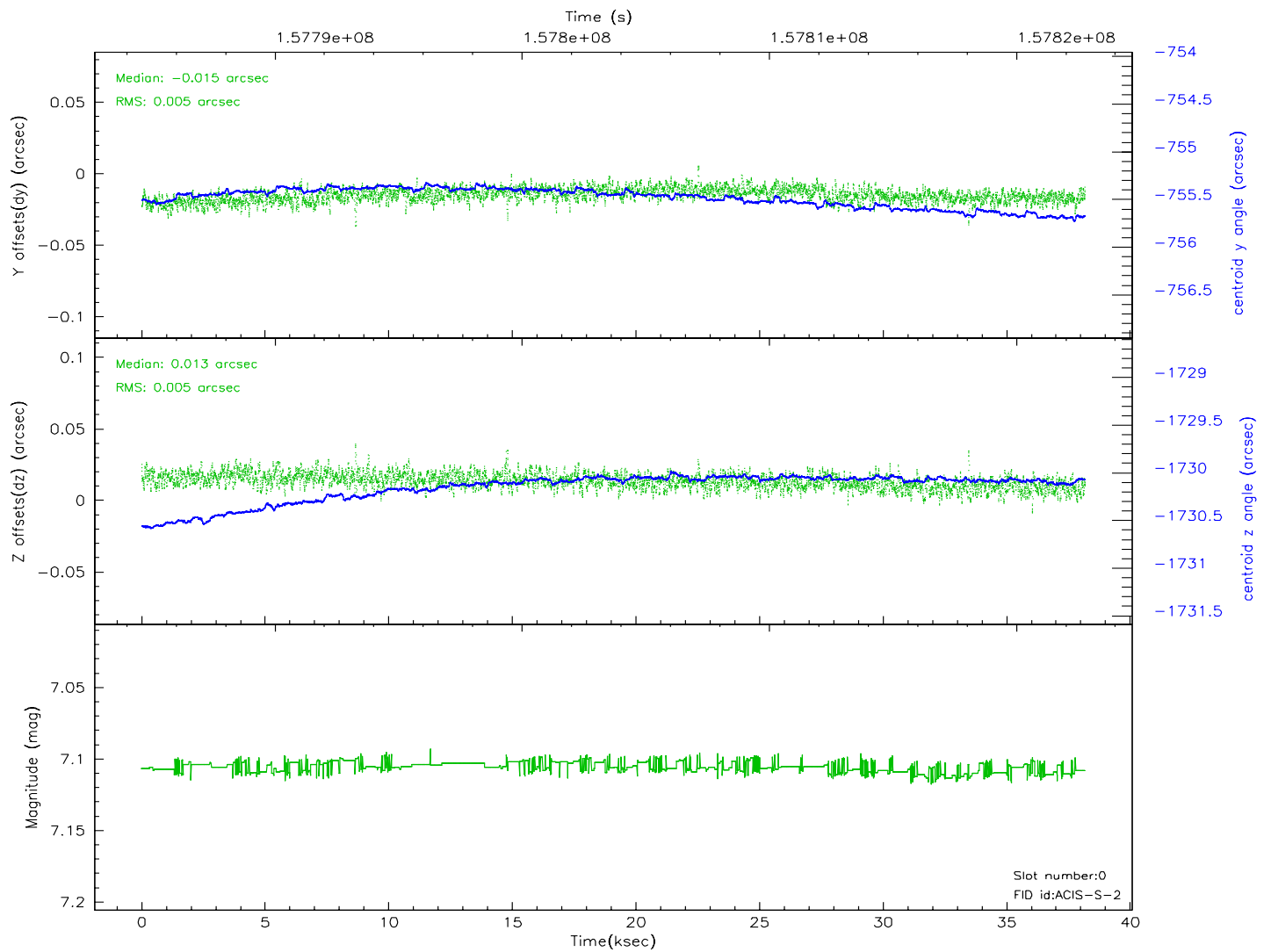
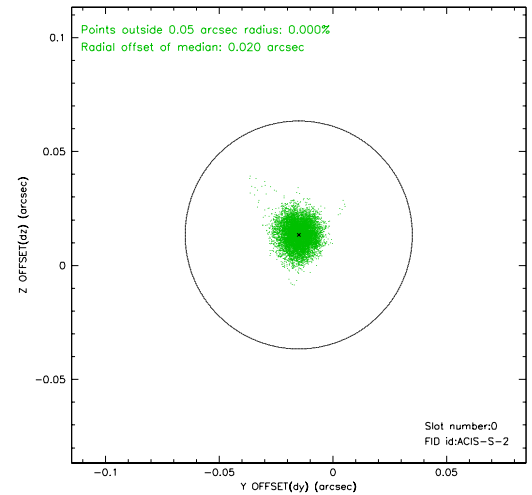
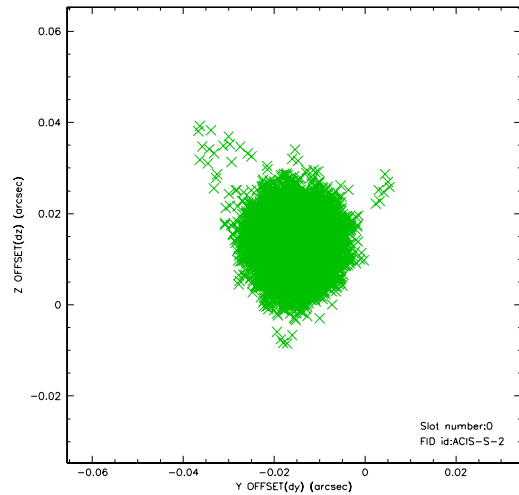


2.4.5 Slot 7

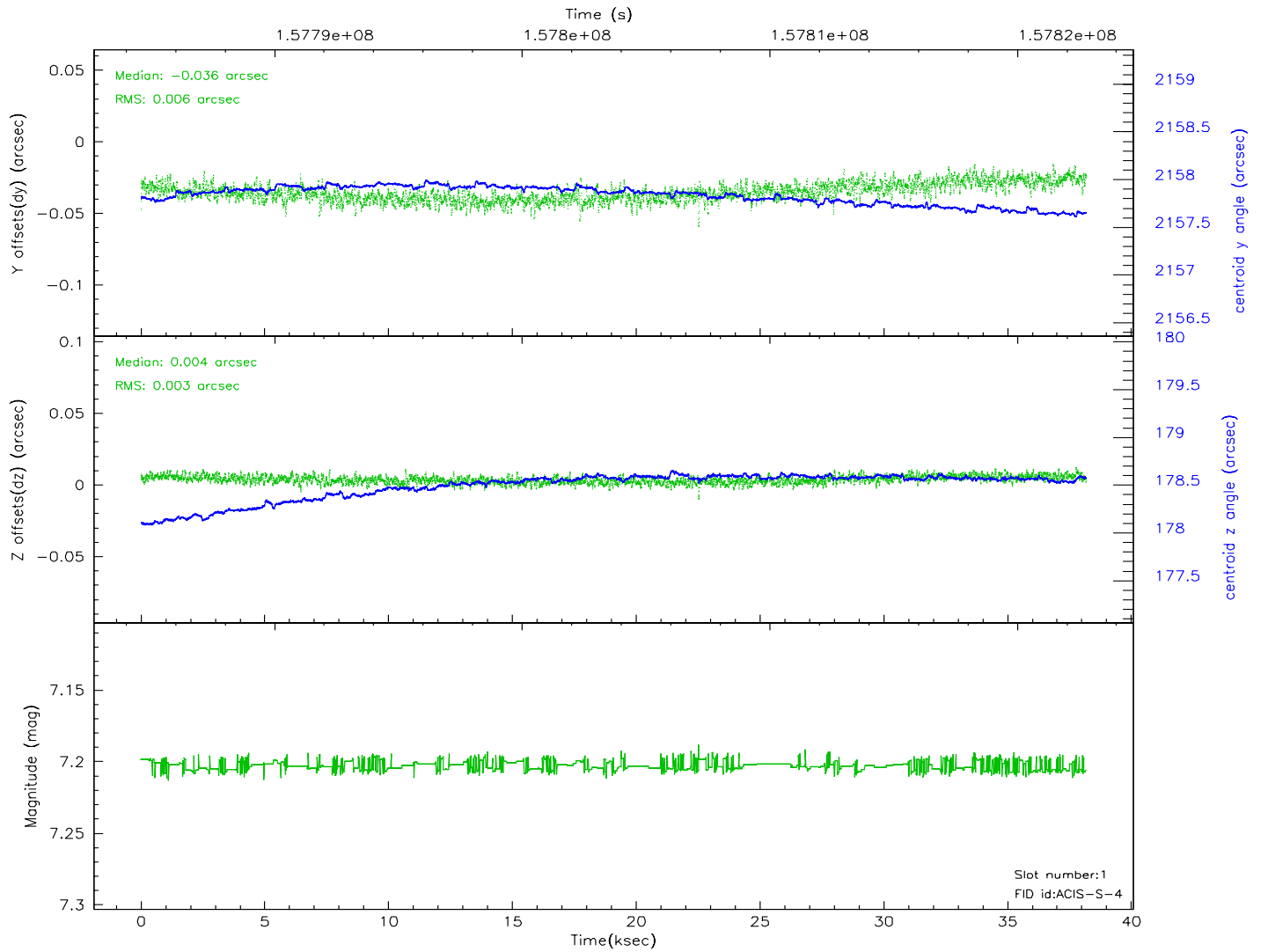
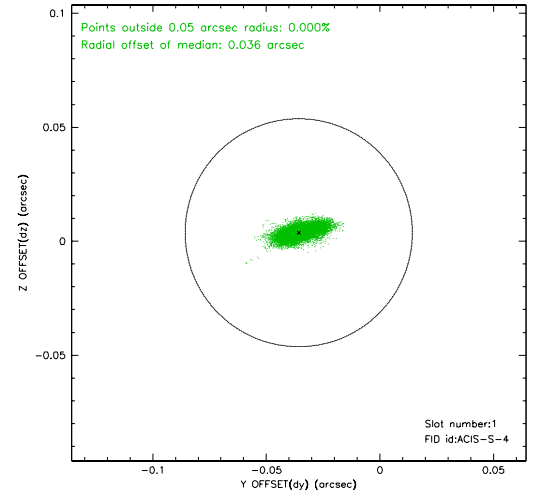
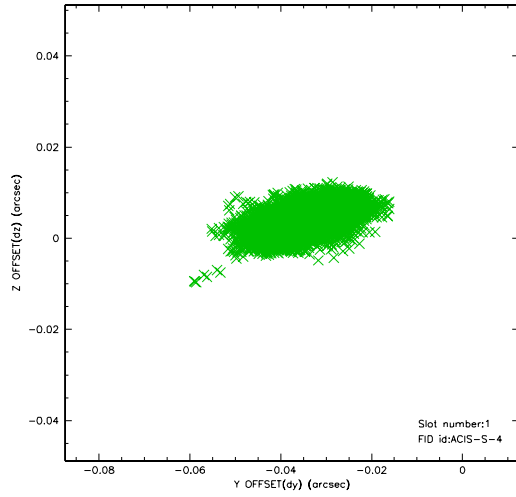


2.5 FID Slots

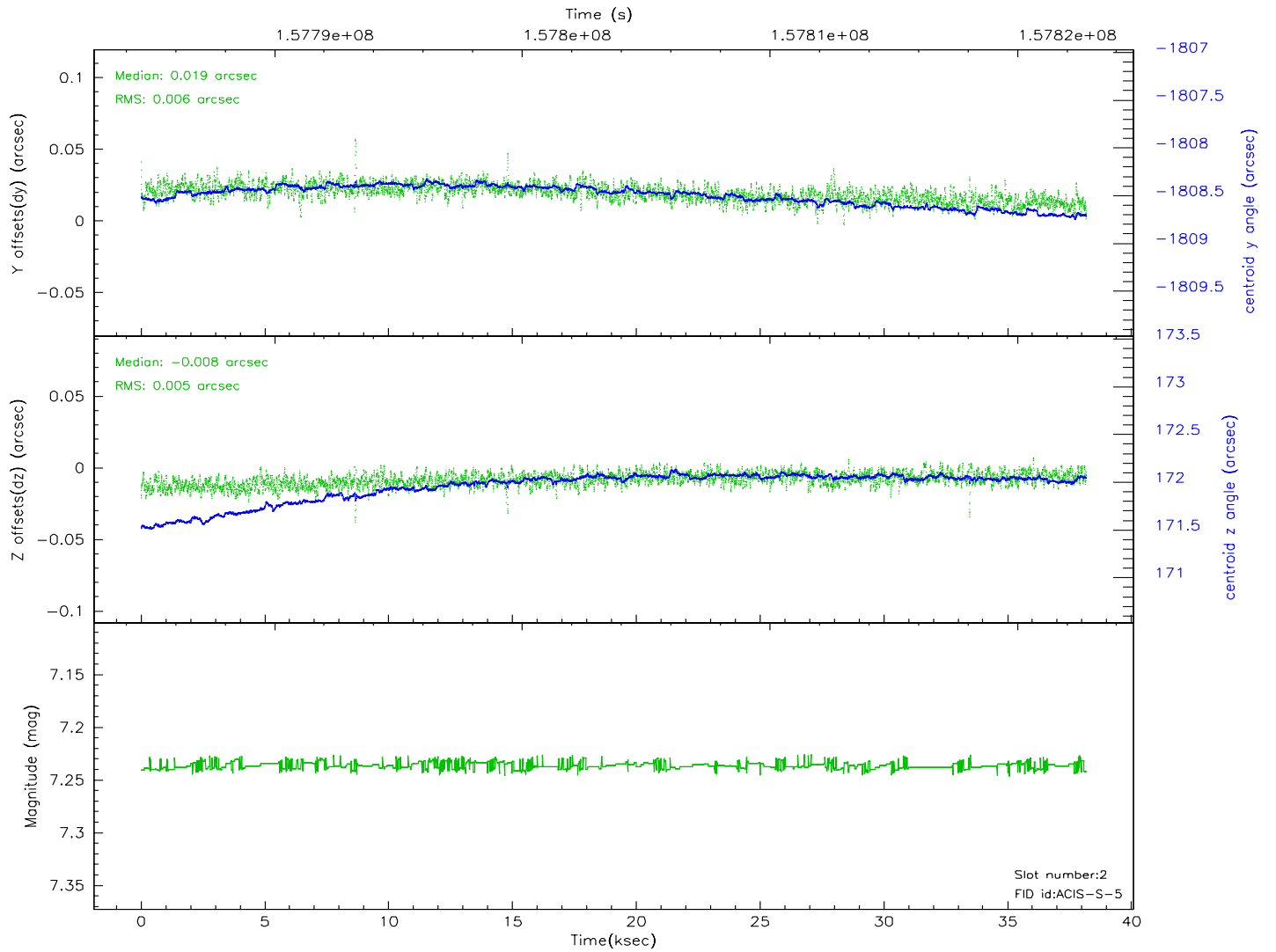
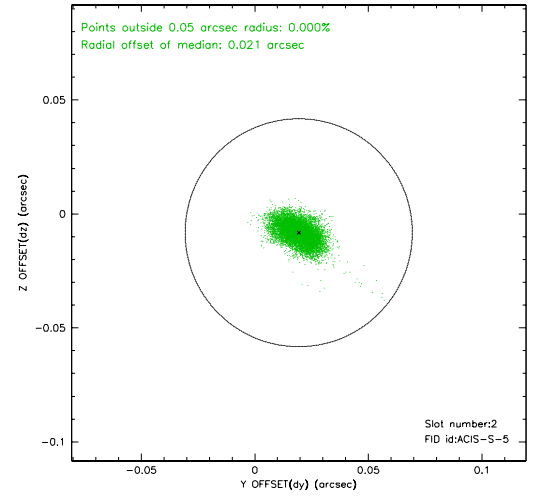
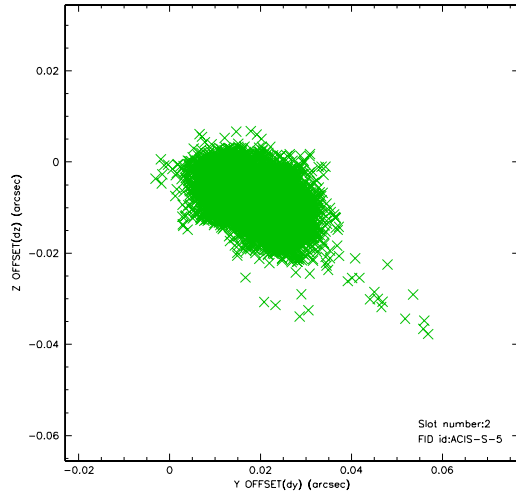
2.5.1 Slot 0



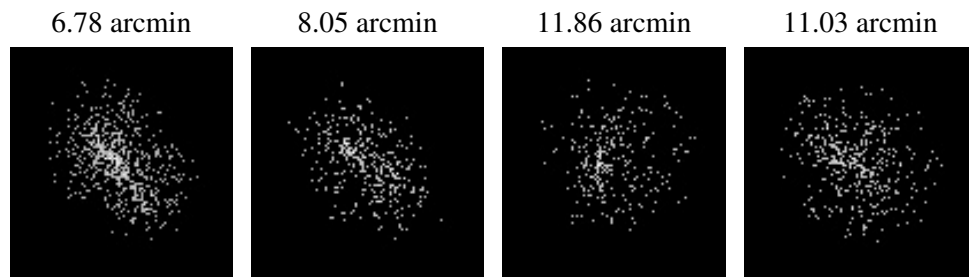
2.5.2 Slot 1



2.5.3 Slot 2



3 Point Sources



A Summary

A.1 Status

V&V Scientist	Jen Lauer
V&V Date (YYYY-MM-DD)	2006.10.19
V&V Edition	1
V&V Disposition and Status	OK
V&V Charge Time	37.756

A.2 Comments