

# V&V Reference Report

## L2 ASCDS Version : 7.6.9

Observation 3345 - L2 Version 001  
Chandra X-Ray Center

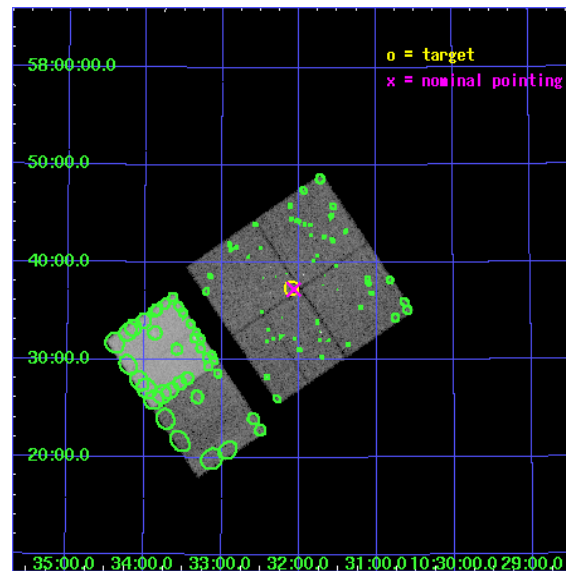
L2 Processing Date : Sep 14 2006

## Contents

<b>1</b>	<b>Front</b>	<b>2</b>
<b>2</b>	<b>OBI</b>	<b>3</b>
2.1	OBI . . . . .	3
2.1.1	Images . . . . .	3
2.1.2	Bias . . . . .	3
2.1.3	Parameters . . . . .	4
2.1.4	Events . . . . .	4
2.2	Compared Parameters . . . . .	5
2.3	Aspect . . . . .	6
2.4	Star Slots . . . . .	9
2.4.1	Slot 3 . . . . .	9
2.4.2	Slot 4 . . . . .	10
2.4.3	Slot 5 . . . . .	11
2.4.4	Slot 6 . . . . .	12
2.4.5	Slot 7 . . . . .	13
2.5	FID Slots . . . . .	14
2.5.1	Slot 0 . . . . .	14
2.5.2	Slot 1 . . . . .	15
2.5.3	Slot 2 . . . . .	16
<b>3</b>	<b>Point Sources</b>	<b>17</b>
<b>A</b>	<b>Summary</b>	<b>18</b>
A.1	Status . . . . .	18
A.2	Comments . . . . .	18

# 1 Front

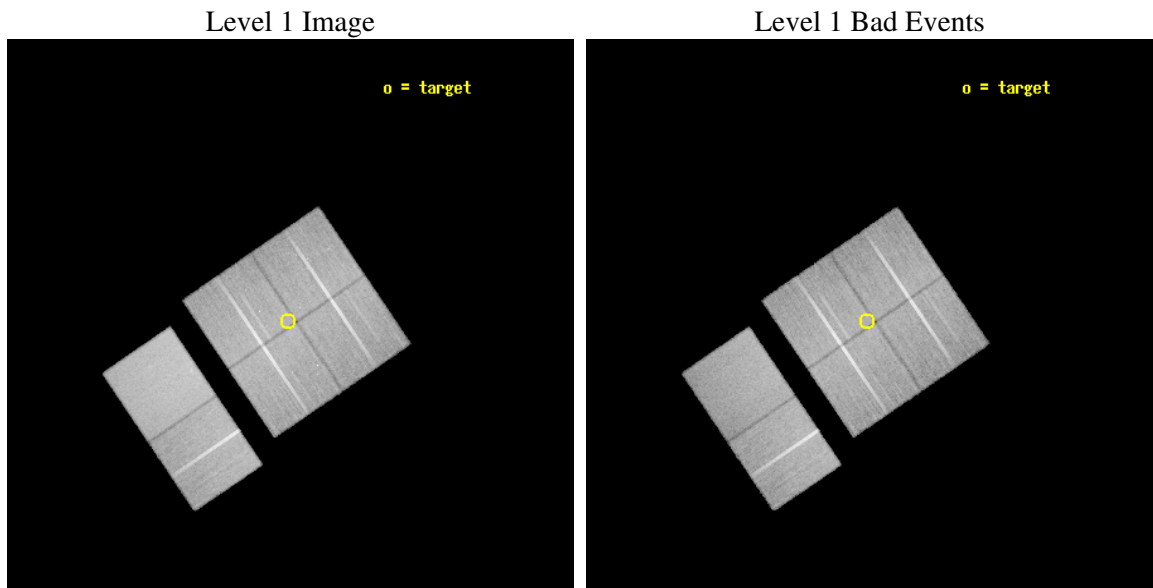
seq_num	900184
obs_id	3345
title	WIDE-FIELD CHANDRA SURVEY OF THE LOCKMAN HOLE-NORTHWEST
observer	Prof. AMY BARGER
object	LH-NW-4
dtcycle	0
cycle	P
ra_targ	158.025009
dec_targ	57.623608
ra_nom	158.01766527108
dec_nom	57.621085828501
roll_nom	235.80981303392
revision	2
ontime	38956.758894593
livetime	38463.464956525
ontime0	38953.517874509
ontime1	38950.276974052
ontime2	38950.276983976
ontime3	38956.758894593
ontime6	38956.758874685
ontime7	38959.999854863
l2events	252374



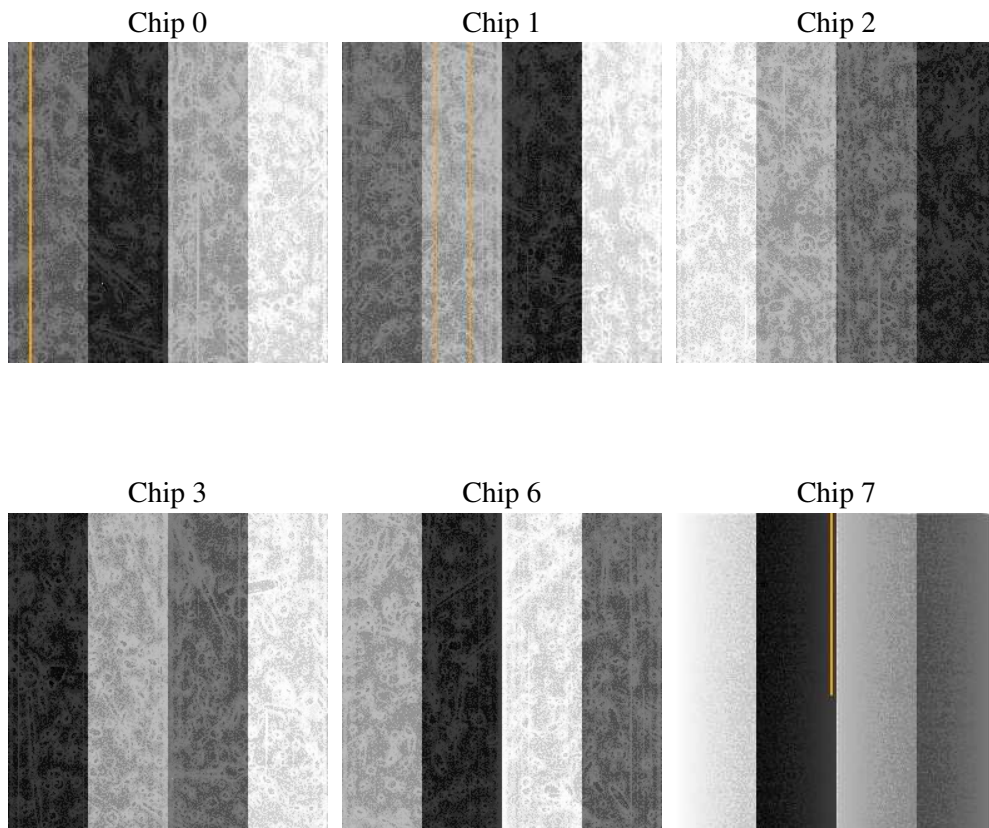
## 2 OBI

### 2.1 OBI

#### 2.1.1 Images



#### 2.1.2 Bias



### 2.1.3 Parameters

obi_num	0
ascdsver	7.6.9
caldsver	3.2.3
date	2006-09-14T20:00:23
revision	2

sched_exp_time	39000.000000
ontime	38963.298048228
ontime0	38960.057028145
ontime1	38956.816127688
ontime2	38956.816137612
ontime3	38963.298048228
ontime6	38963.29802832
ontime7	38966.539008498
l1events	1550142

### 2.1.4 Events

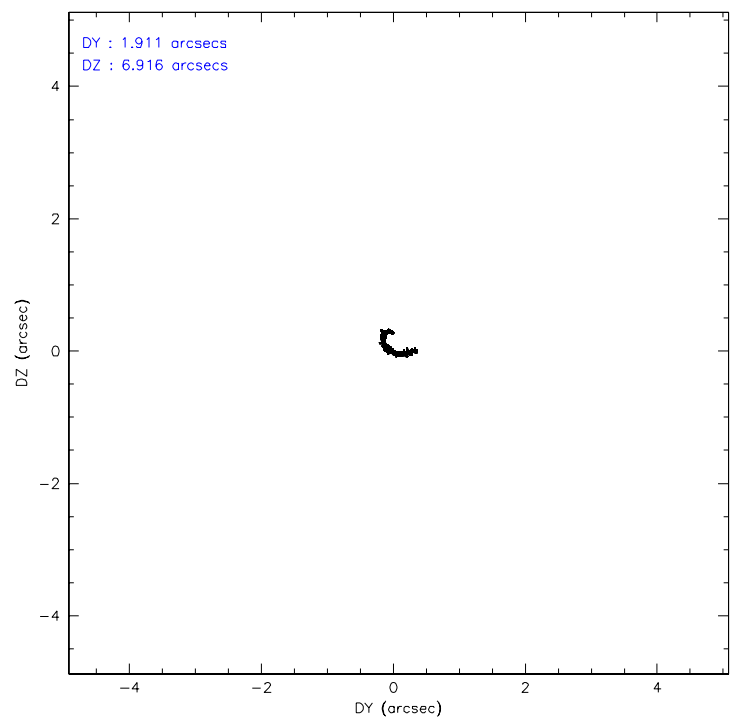
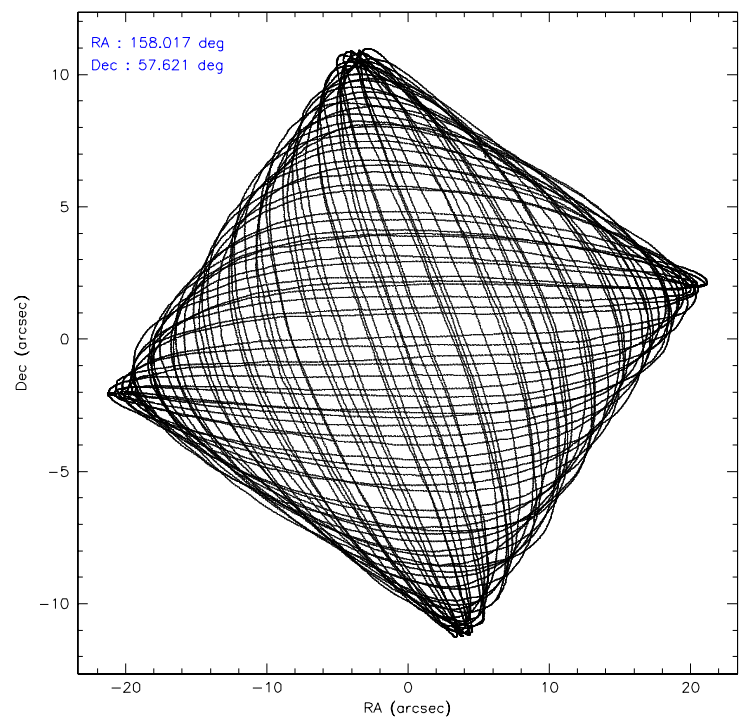
	ccd 0	ccd 1	ccd 2	ccd 3	ccd 6	ccd 7
level 1 events	228014	232549	252179	250045	261236	326119
rejected events	198391	200298	221876	220931	231261	201412
rejected %	87%	86%	87%	88%	88%	61%

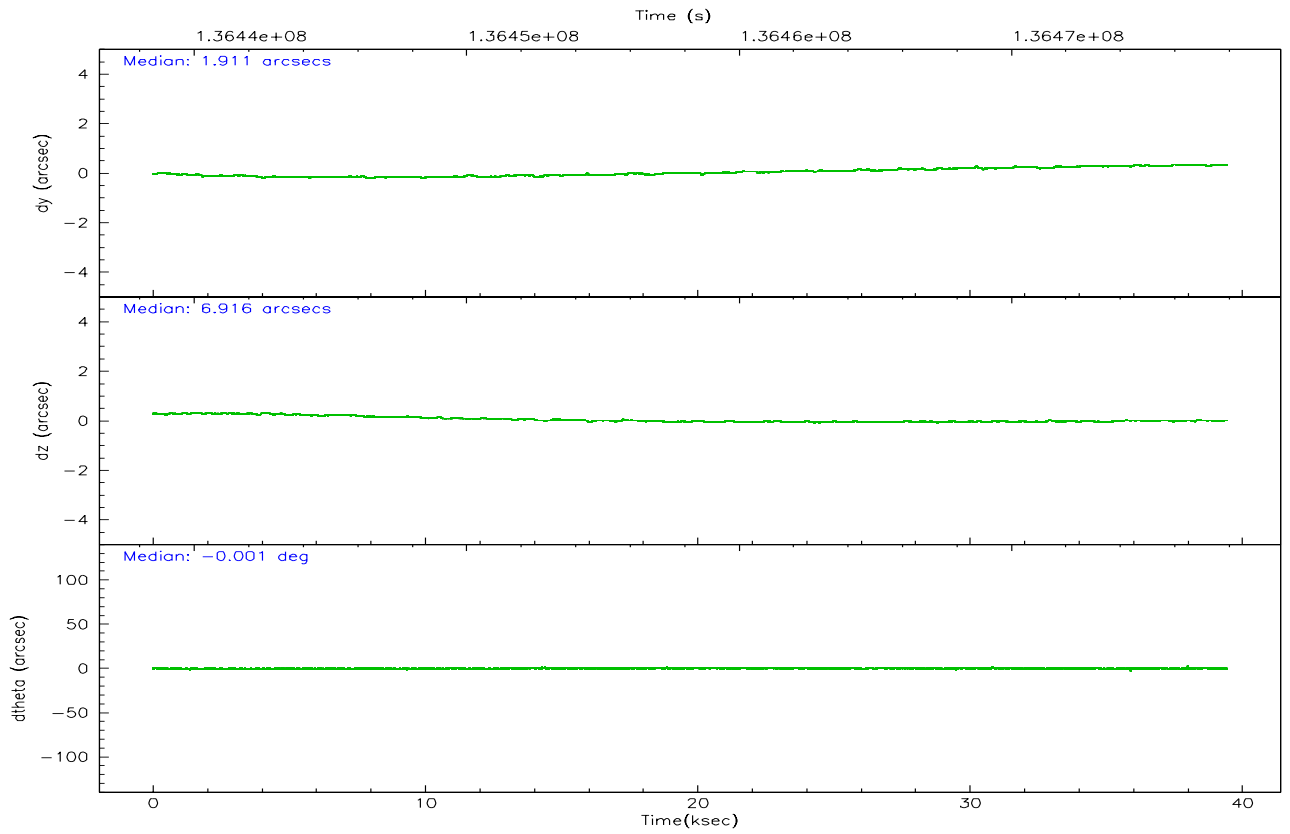
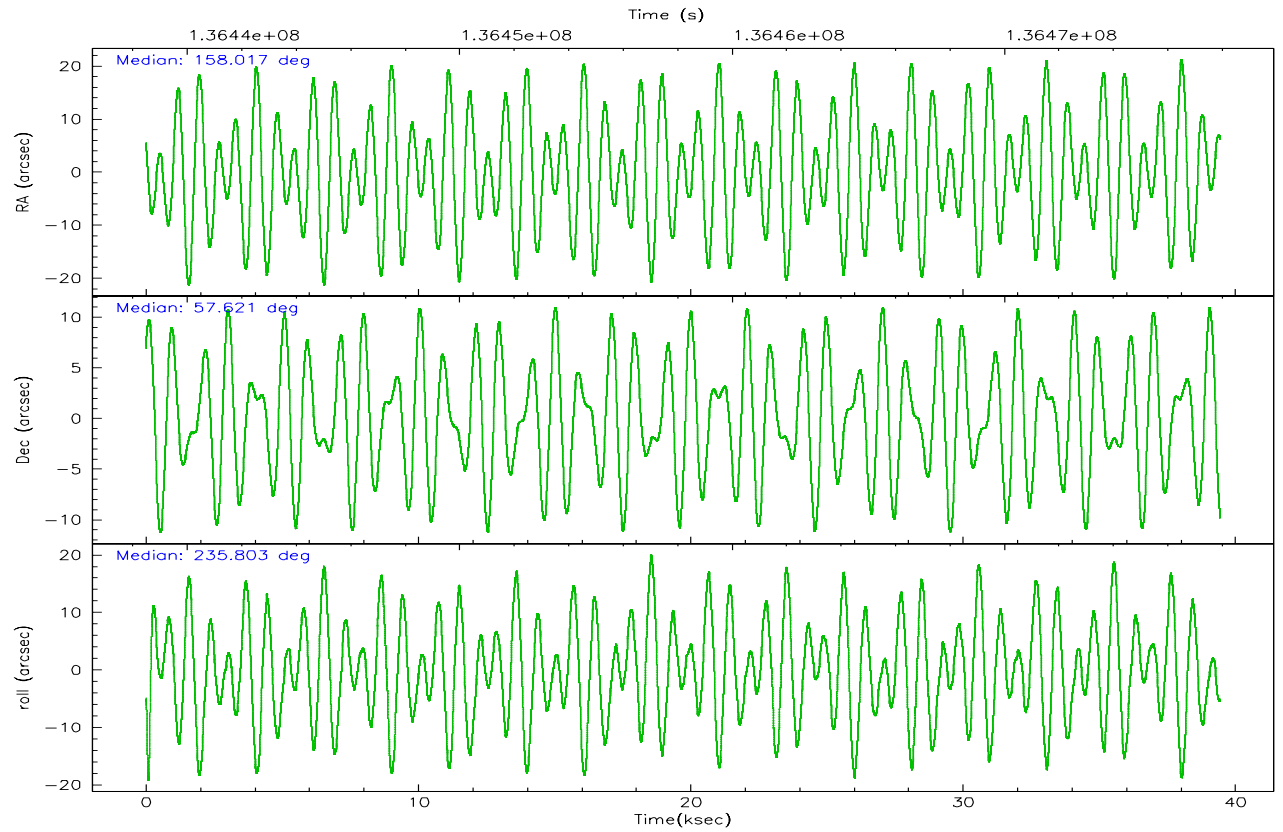
	ccd 0	ccd 1	ccd 2	ccd 3	ccd 6	ccd 7
grade 0 events	12540	13553	13366	12372	11953	7485
	5%	5%	5%	4%	4%	2%
grade 1 events	104	115	121	116	134	180
	0%	0%	0%	0%	0%	0%
grade 2 events	6342	6483	6378	5903	6116	30720
	2%	2%	2%	2%	2%	9%
grade 3 events	2906	3069	2714	2770	3035	6443
	1%	1%	1%	1%	1%	1%
grade 4 events	2583	3131	2691	2835	2864	6295
	1%	1%	1%	1%	1%	1%
grade 5 events	9322	10173	9000	10121	11048	22097
	4%	4%	3%	4%	4%	6%
grade 6 events	5258	6024	5165	5239	6016	73784
	2%	2%	2%	2%	2%	22%
grade 7 events	188959	190001	212744	210689	220070	179115
	82%	81%	84%	84%	84%	54%

## 2.2 Compared Parameters

Parameter	Planned	Actual	Parameter	Planned	Actual
Instrument	ACIS	ACIS	Obspar format version number	6	6
Detector	ACIS-012367	ACIS-012367	Obspar file type	PREDICTED	ACTUAL
Grating	NONE	NONE	Obspar update status	NONE	UPDATED
Data mode	VFAINT	VFAINT	Number of optional ACIS chips dropped	0	0
Observation mode	POINTING	POINTING	On-chip summing requested	N	N
Pointing RA	158.021274	158.0176652710848	Subarray requested	NONE	NONE
Pointing Dec	57.648410	57.62108582850053	Alternating exposures requested	N	N
Pointing Roll	235.598082	235.8098130339179	Primary exposure time	0.000000	3.2
SIM focus pos (mm)	-0.782348	-0.7809083437167272			
SIM defocus (mm)	0	0.001439871863259334			
SIM translation stage pos (mm)	-233.592463	-233.5874344608287			
SIM translation stage offset (mm)	0	-0.005018542100998502			
Observation start time	136438917.184000	136437825.13711			
Observation start date	2002-04-29T03:40:53	2002-04-29T03:23:45			
Observation end time	136477917.184000	136478543.77627			
Observation end date	2002-04-29T14:30:53	2002-04-29T14:42:23			
Read mode	TIMED	TIMED			

## 2.3 Aspect





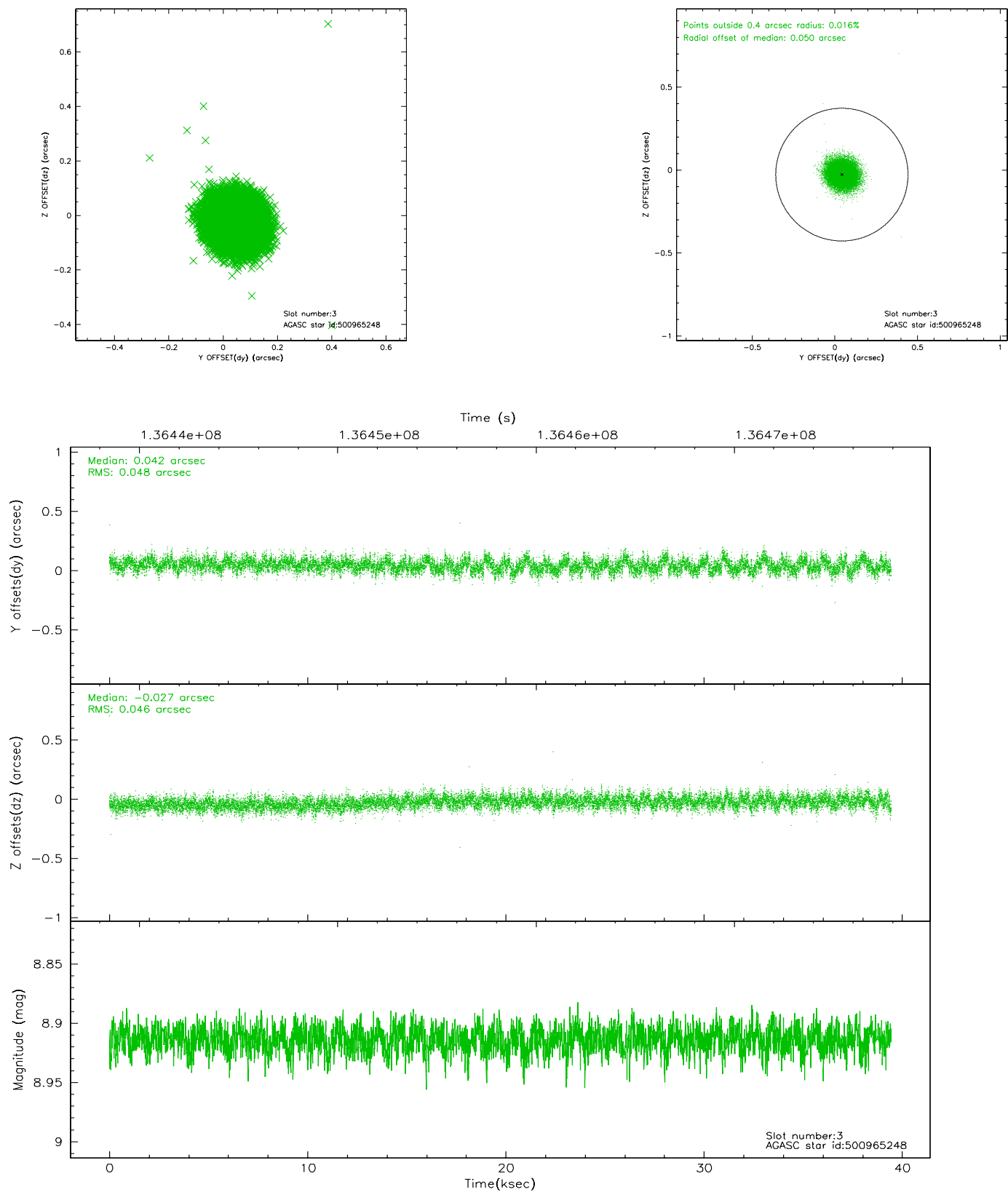
### Slot Statistics

slot	status	id	mag	n_pts	med_dy	med_dz	dr1	dr2	ra	dec	mean_y	mean_z
0	FID	ACIS-I-1	7.24	9619	-0.028	0.051	0.007	0.013	0.000000	0.000000	937.82	-830.33
1	FID	ACIS-I-5	7.23	9620	-0.010	0.040	0.009	0.016	0.000000	0.000000	-1810.22	1067.19
2	FID	ACIS-I-6	7.26	9621	-0.052	-0.020	0.008	0.013	0.000000	0.000000	403.38	1711.61
3	GUIDE	500965248	8.91	19237	0.042	-0.027	0.071	0.114	157.040068	57.653140	1041.75	-1575.80
4	GUIDE	500569128	9.02	19235	0.019	-0.048	0.067	0.108	157.930103	57.115848	1681.22	936.67
5	GUIDE	500962432	9.52	19232	-0.020	0.002	0.114	0.184	158.977500	58.020820	-2147.78	740.04
6	GUIDE	500964584	10.16	19212	0.071	-0.042	0.149	0.263	157.258707	57.744776	533.91	-1408.65
7	GUIDE	500965928	10.25	19152	-0.112	0.119	0.154	0.248	159.388587	57.791439	-1930.23	1859.45

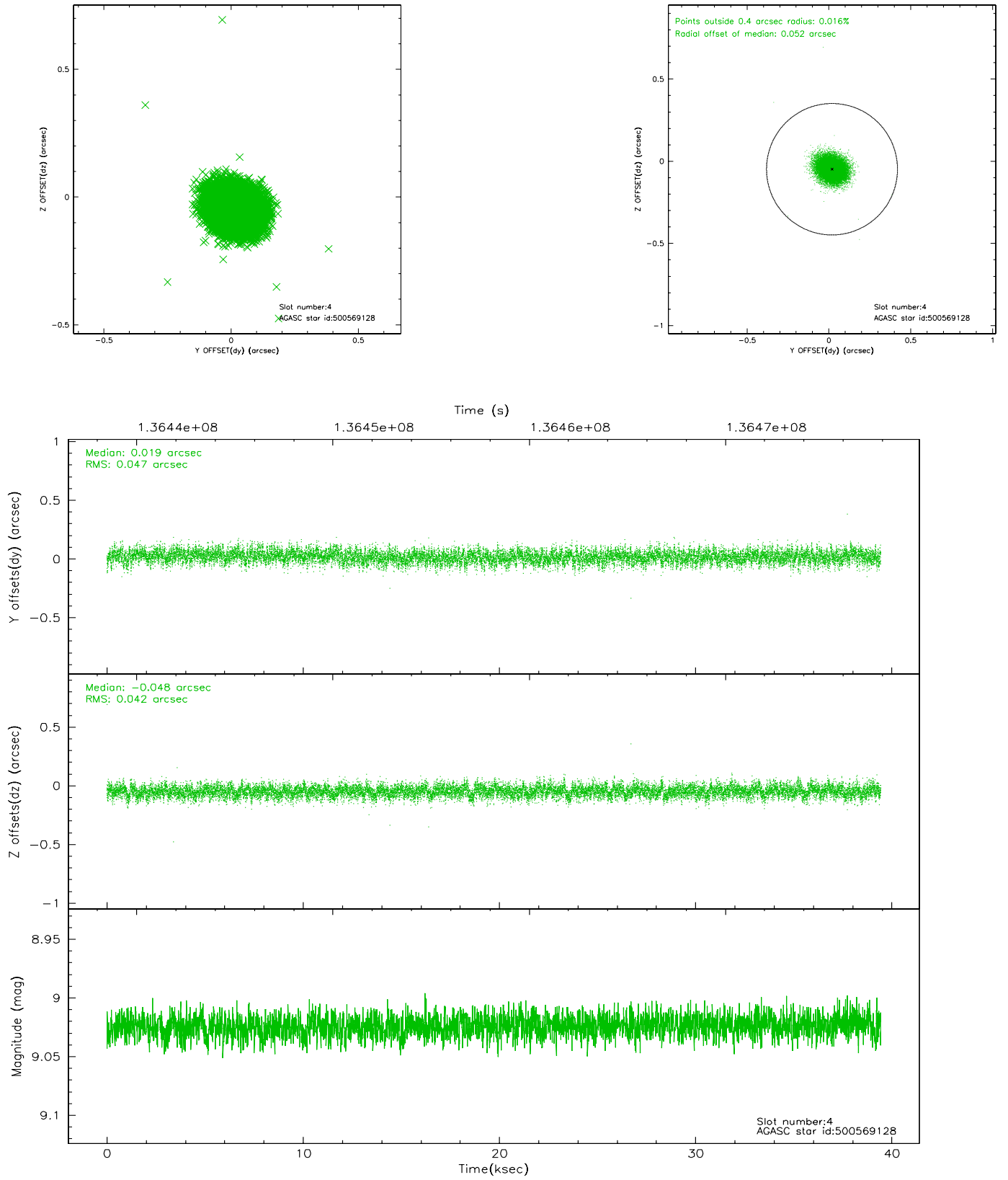


## 2.4 Star Slots

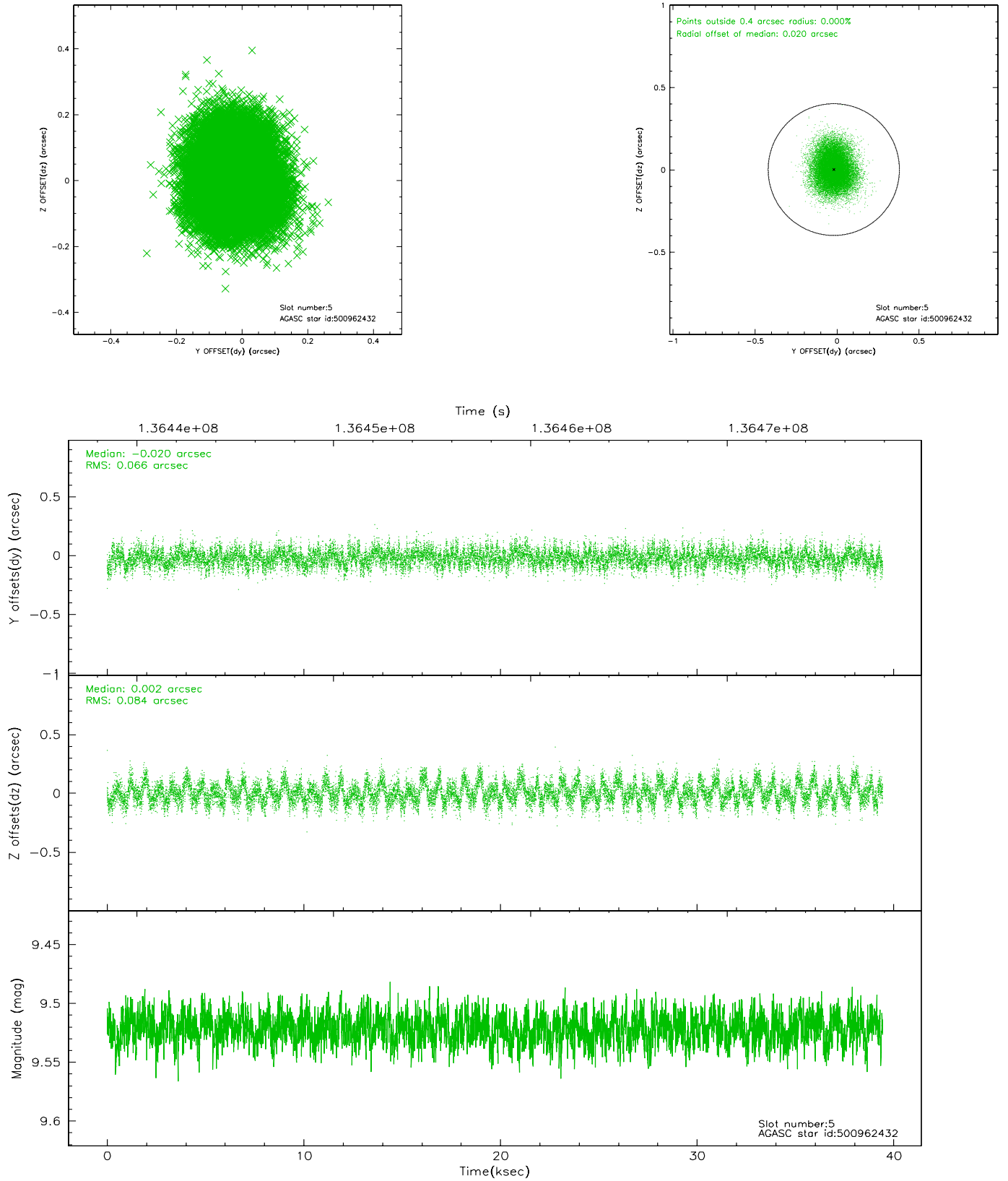
### 2.4.1 Slot 3



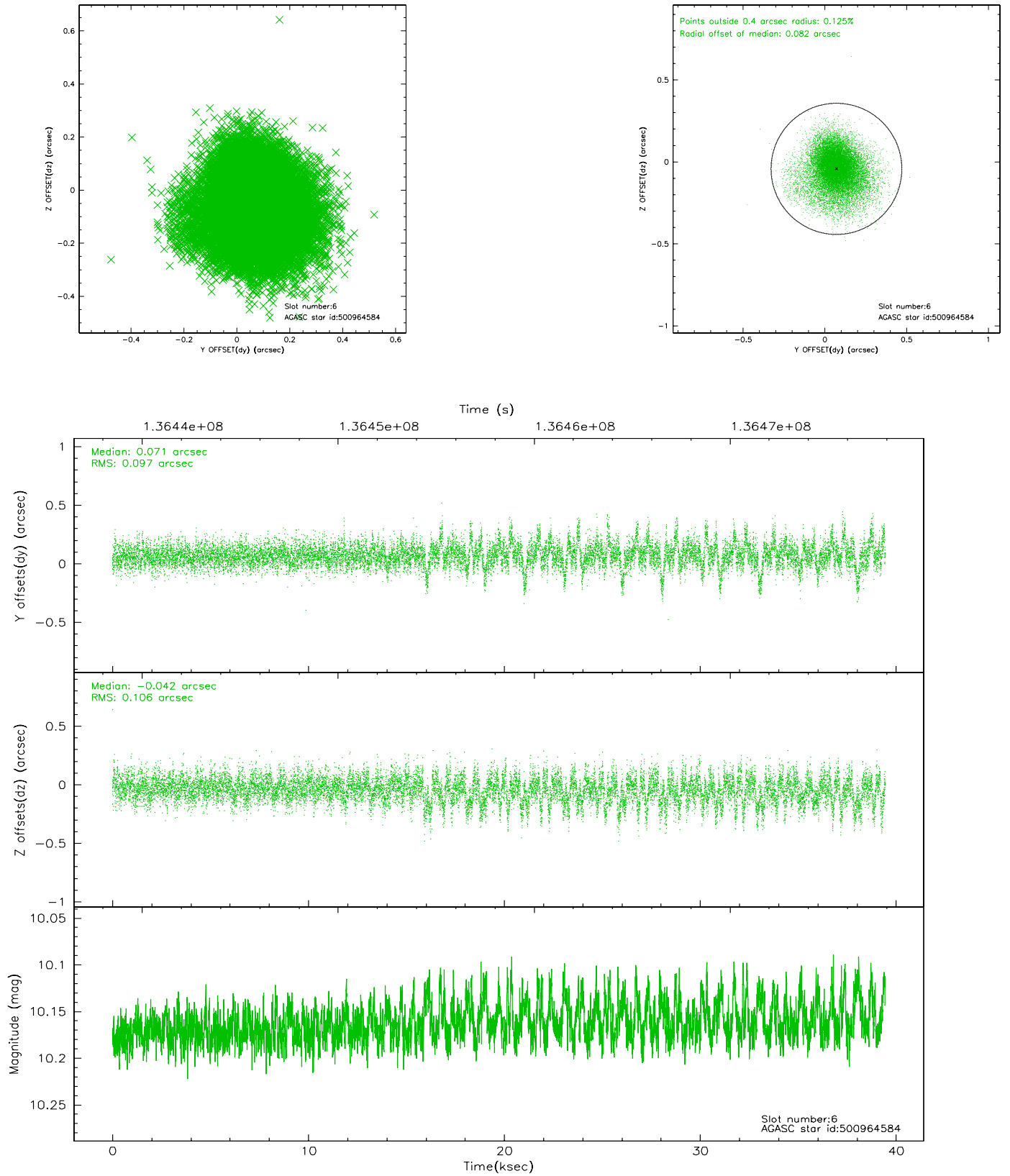
## 2.4.2 Slot 4



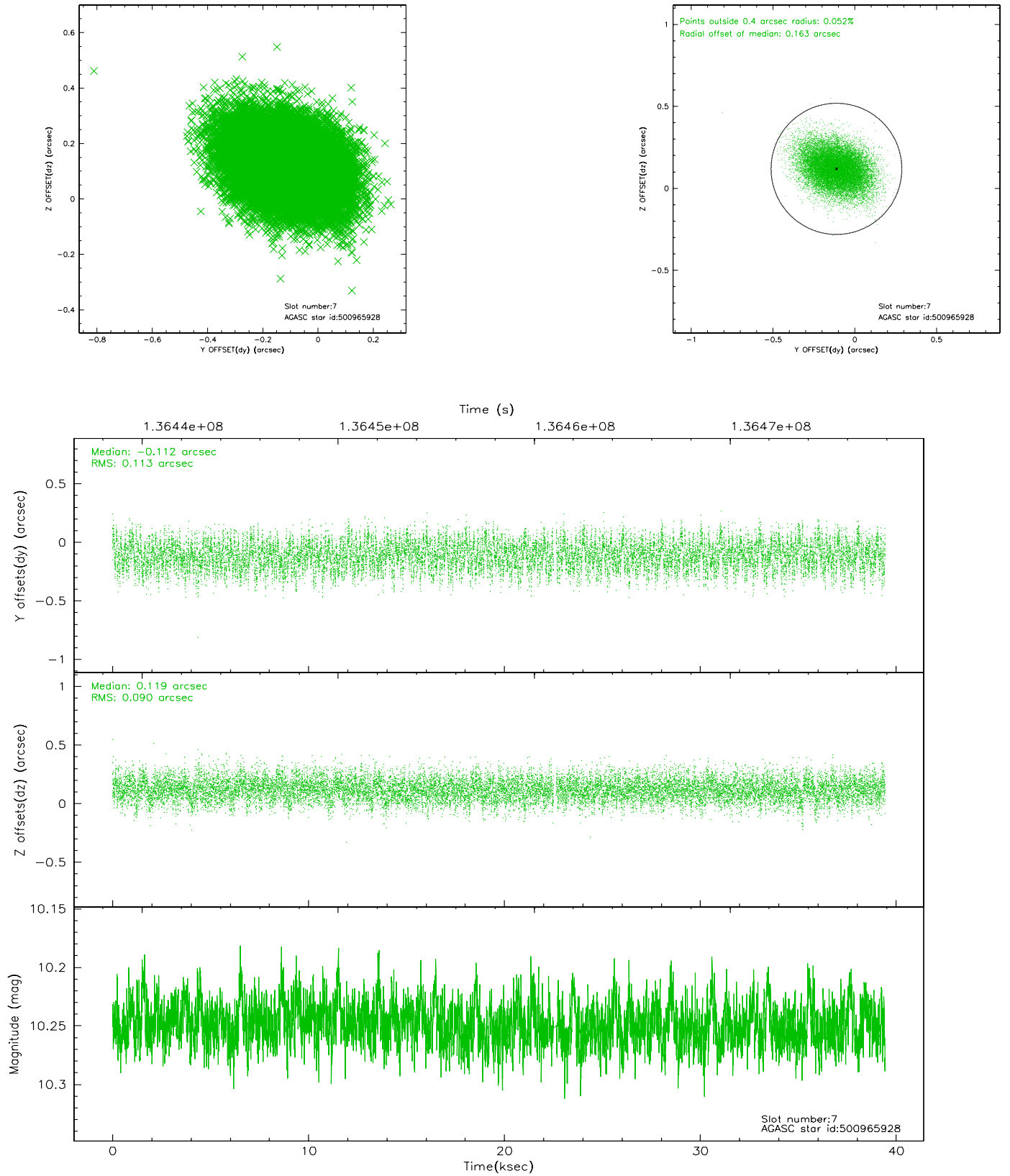
### 2.4.3 Slot 5



## 2.4.4 Slot 6

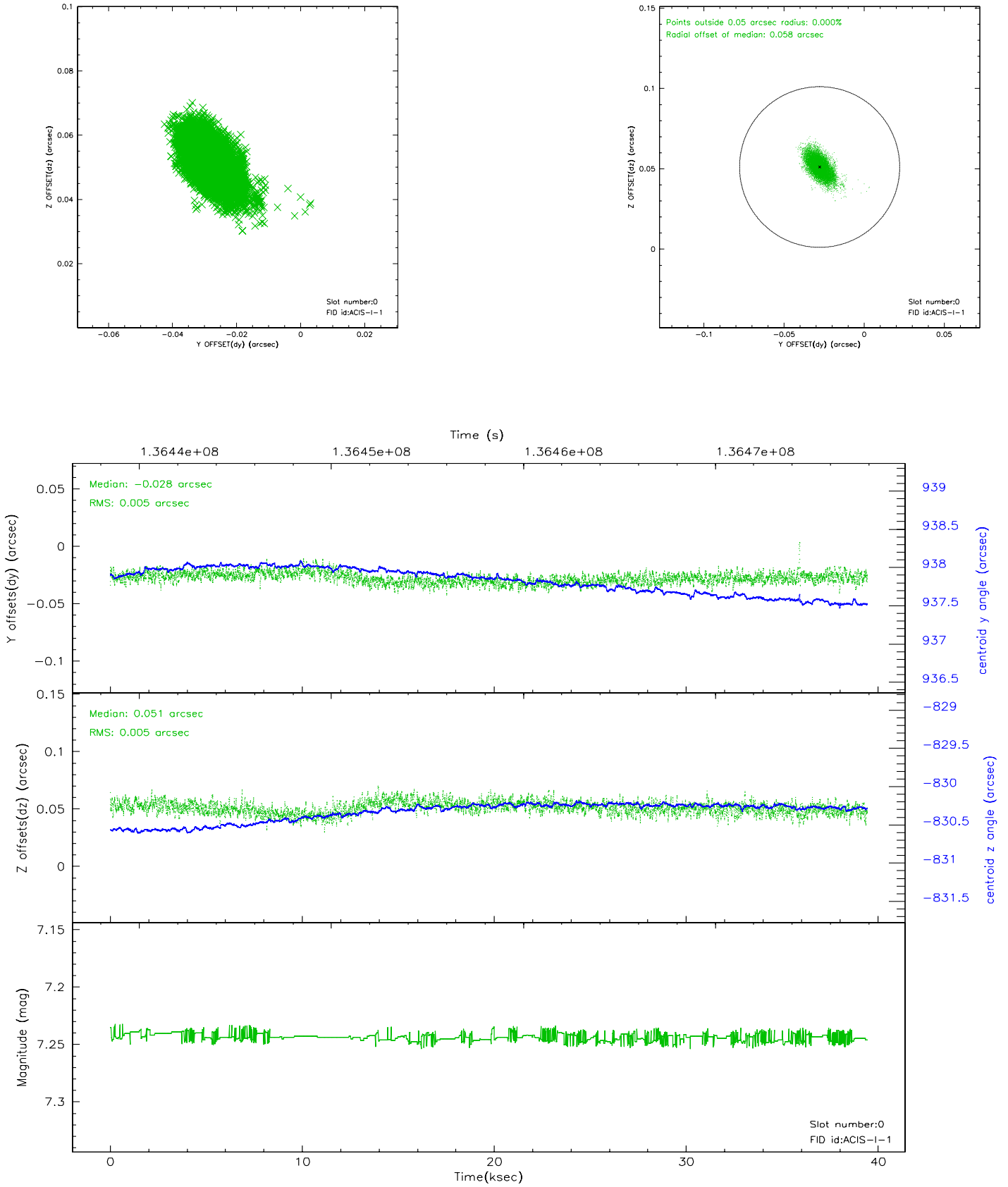


## 2.4.5 Slot 7

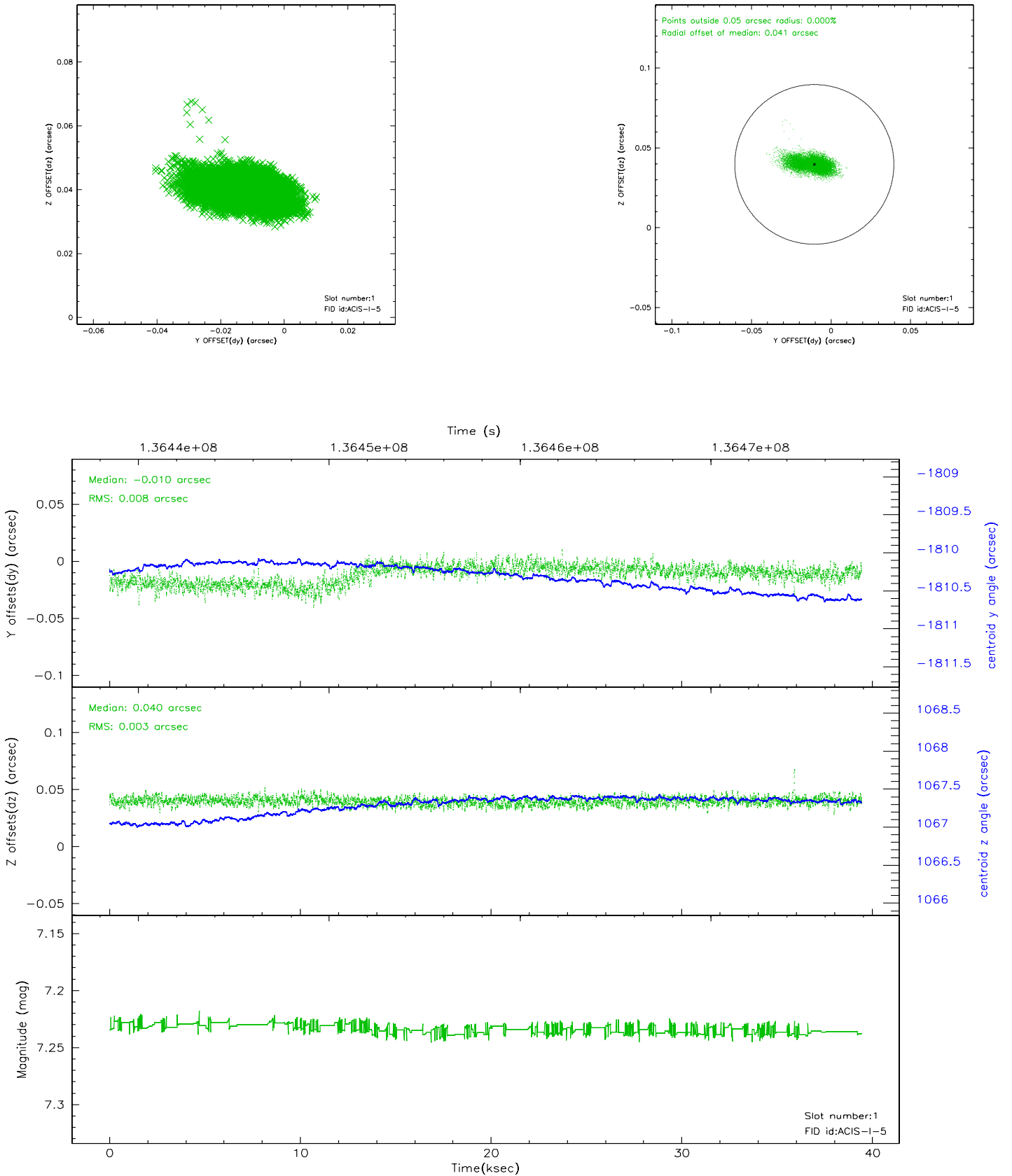


## 2.5 FID Slots

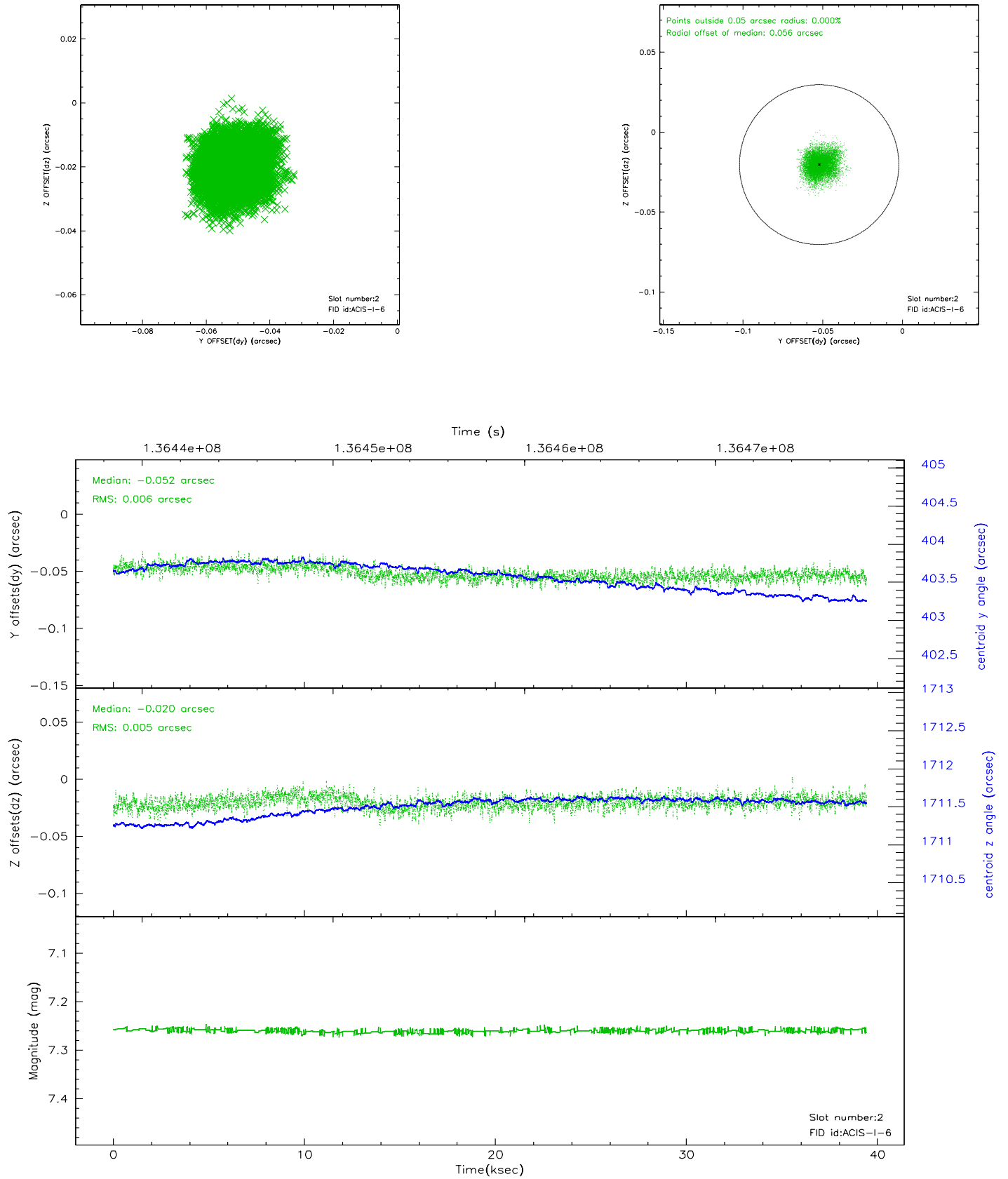
### 2.5.1 Slot 0



## 2.5.2 Slot 1

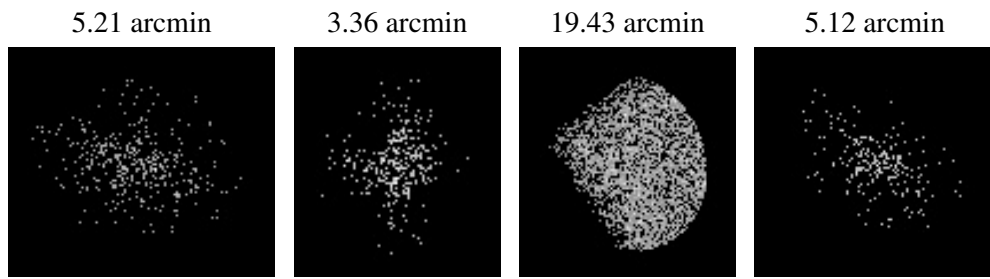


### 2.5.3 Slot 2





### 3 Point Sources



## A Summary

### A.1 Status

V&V Scientist	Jen Lauer
V&V Date (YYYY-MM-DD)	2006.09.18
V&V Edition	1
V&V Disposition and Status	OK
V&V Charge Time	38.959

### A.2 Comments