

# V&V Reference Report

## L2 ASCDS Version : 7.6.9

Observation 3339 - L2 Version 001  
Chandra X-Ray Center

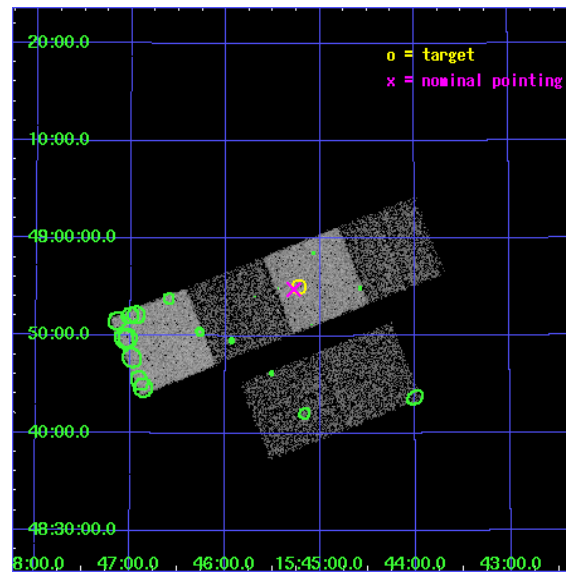
L2 Processing Date : Oct 11 2006

## Contents

<b>1</b>	<b>Front</b>	<b>2</b>
<b>2</b>	<b>OBI</b>	<b>3</b>
2.1	OBI . . . . .	3
2.1.1	Images . . . . .	3
2.1.2	Bias . . . . .	3
2.1.3	Parameters . . . . .	4
2.1.4	Events . . . . .	4
2.2	Compared Parameters . . . . .	5
2.3	Aspect . . . . .	6
2.4	Star Slots . . . . .	9
2.4.1	Slot 3 . . . . .	9
2.4.2	Slot 4 . . . . .	10
2.4.3	Slot 5 . . . . .	11
2.4.4	Slot 6 . . . . .	12
2.4.5	Slot 7 . . . . .	13
2.5	FID Slots . . . . .	14
2.5.1	Slot 0 . . . . .	14
2.5.2	Slot 1 . . . . .	15
2.5.3	Slot 2 . . . . .	16
<b>3</b>	<b>Point Sources</b>	<b>17</b>
<b>A</b>	<b>Summary</b>	<b>18</b>
A.1	Status . . . . .	18
A.2	Comments . . . . .	18

# 1 Front

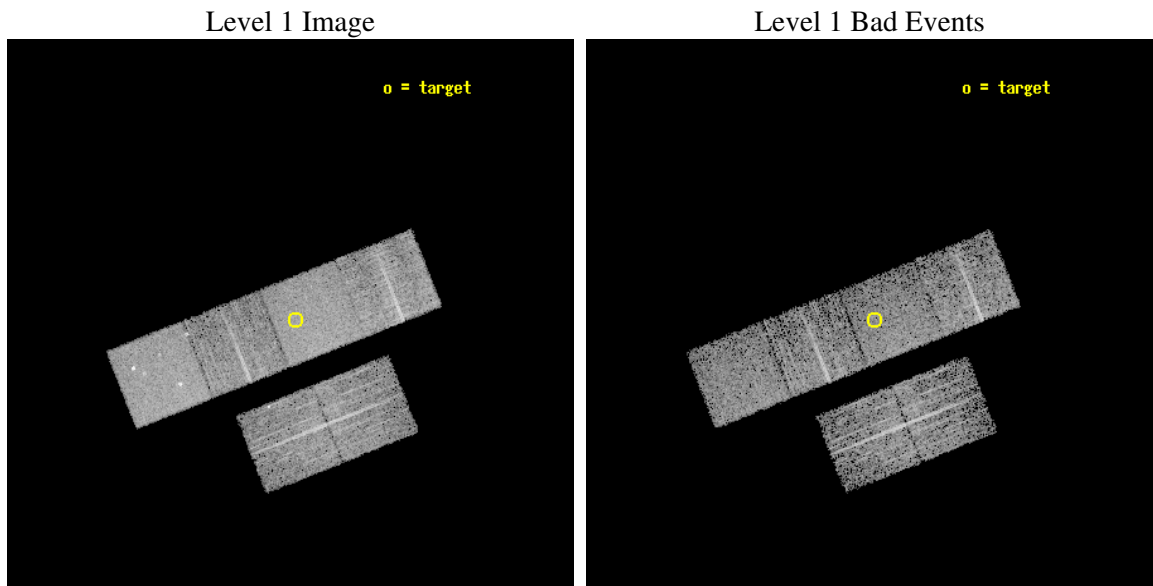
seq_num	900178
obs_id	3339
title	THE SHEEP SURVEY: WHAT KIND OF OBJECTS MAKE THE X-RAY BACKGROUND?
observer	Professor Kirpal Nandra
object	AX J1545.2+4855
dtcycle	0
cycle	P
ra_targ	236.306667
dec_targ	48.918333
ra_nom	236.31924067769
dec_nom	48.913270207897
roll_nom	338.37472045371
revision	2
ontime	4959.9999815226
livetime	4897.1934752031
ontime2	4956.7590112686
ontime3	4959.9999815226
ontime5	4959.9999815226
ontime6	4959.9999815226
ontime7	4959.9999815226
ontime8	4959.9999815226
l2events	49365



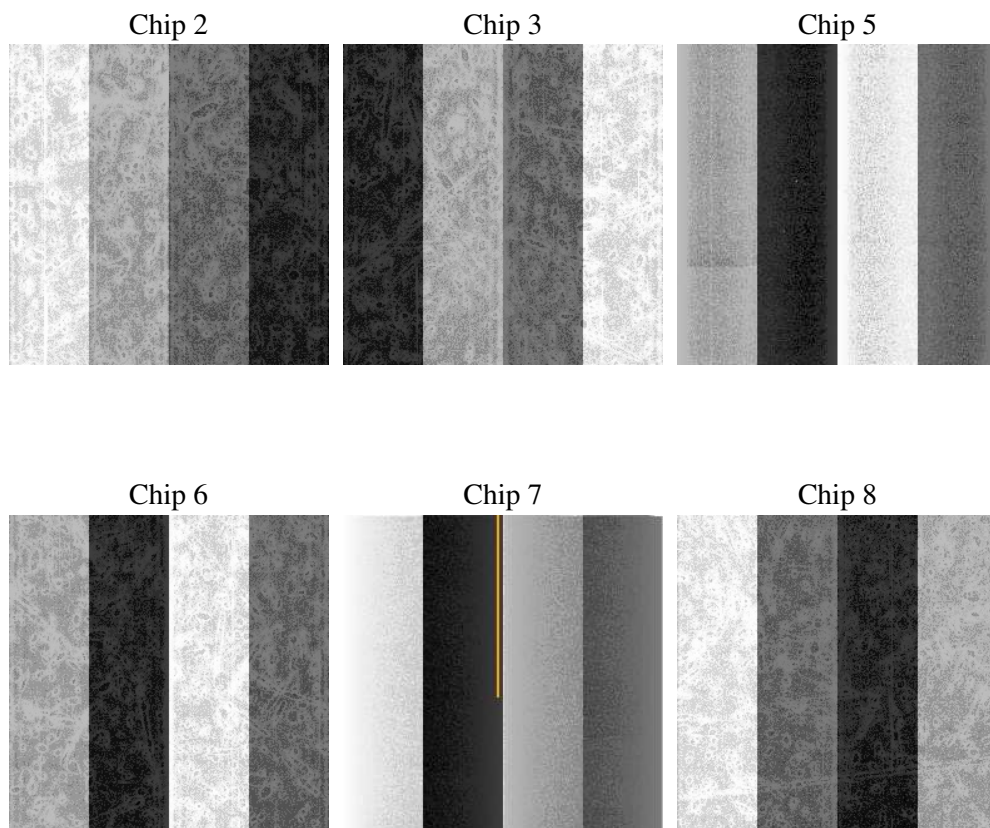
## 2 OBI

### 2.1 OBI

#### 2.1.1 Images



#### 2.1.2 Bias



### 2.1.3 Parameters

obi_num	1
ascdsver	7.6.9
caldsver	3.2.3
date	2006-10-11T21:29:44
revision	2

sched_exp_time	5000.000000
ontime	4965.2115165889
ontime2	4961.9705163836
ontime3	4965.2114866376
ontime5	4965.2115165889
ontime6	4965.2115165889
ontime7	4965.2115165889
ontime8	4965.2115165889
l1events	225274

### 2.1.4 Events

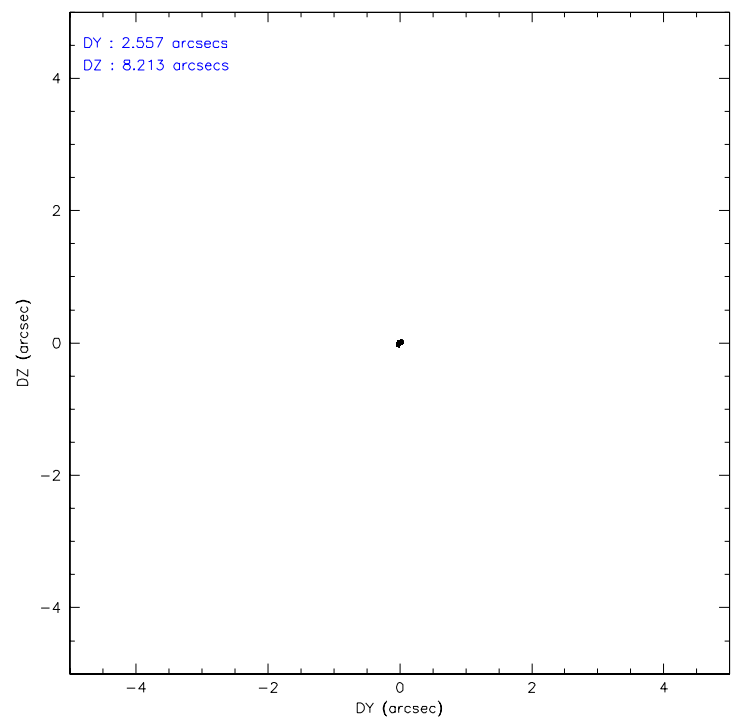
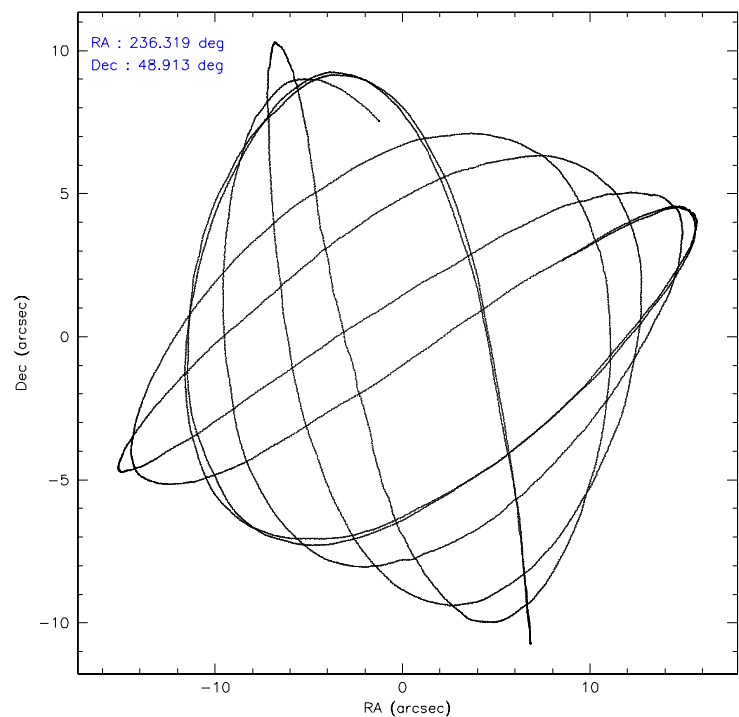
	ccd 2	ccd 3	ccd 5	ccd 6	ccd 7	ccd 8
level 1 events	32571	31733	46387	31953	42362	40268
rejected events	28444	27941	25545	28054	25962	30709
rejected %	87%	88%	55%	87%	61%	76%

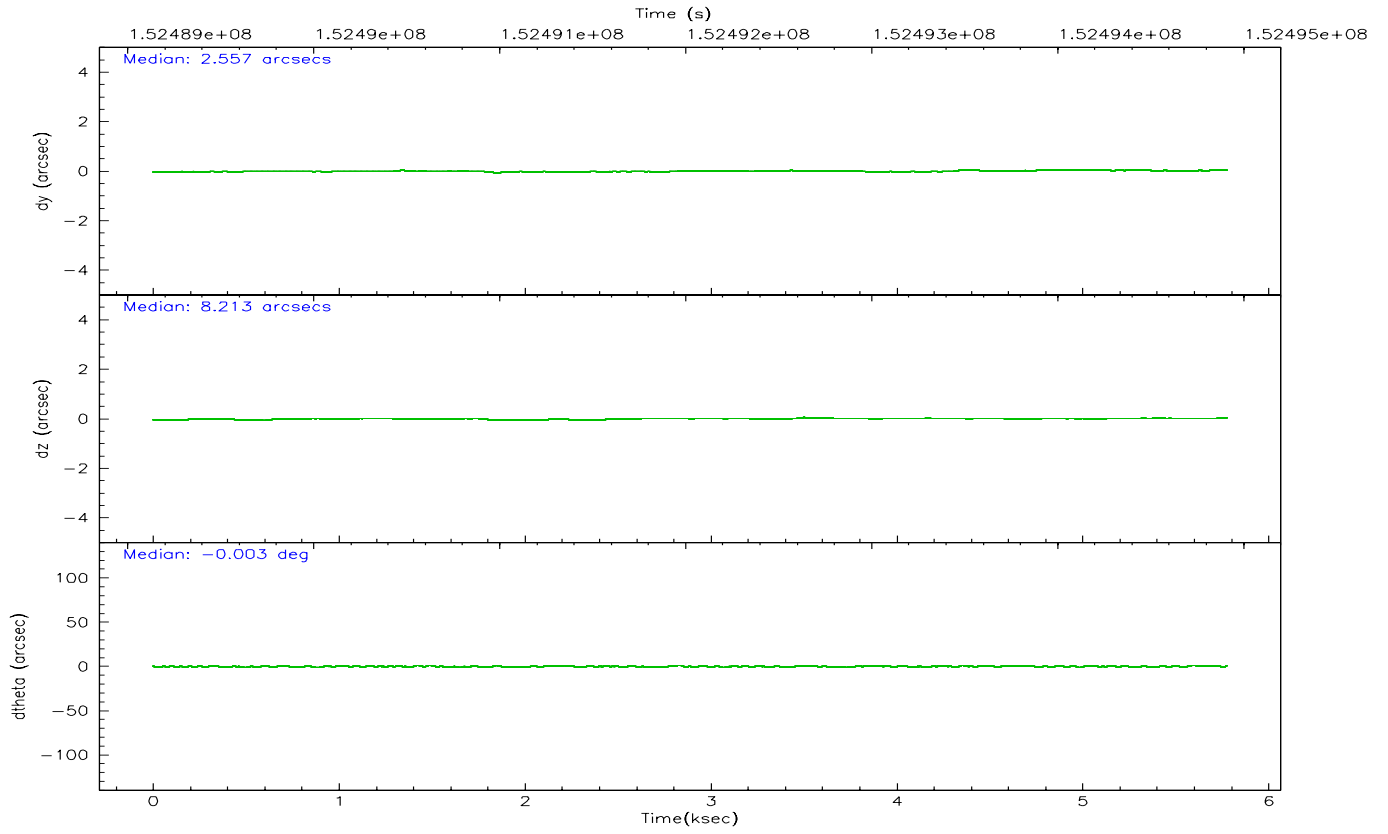
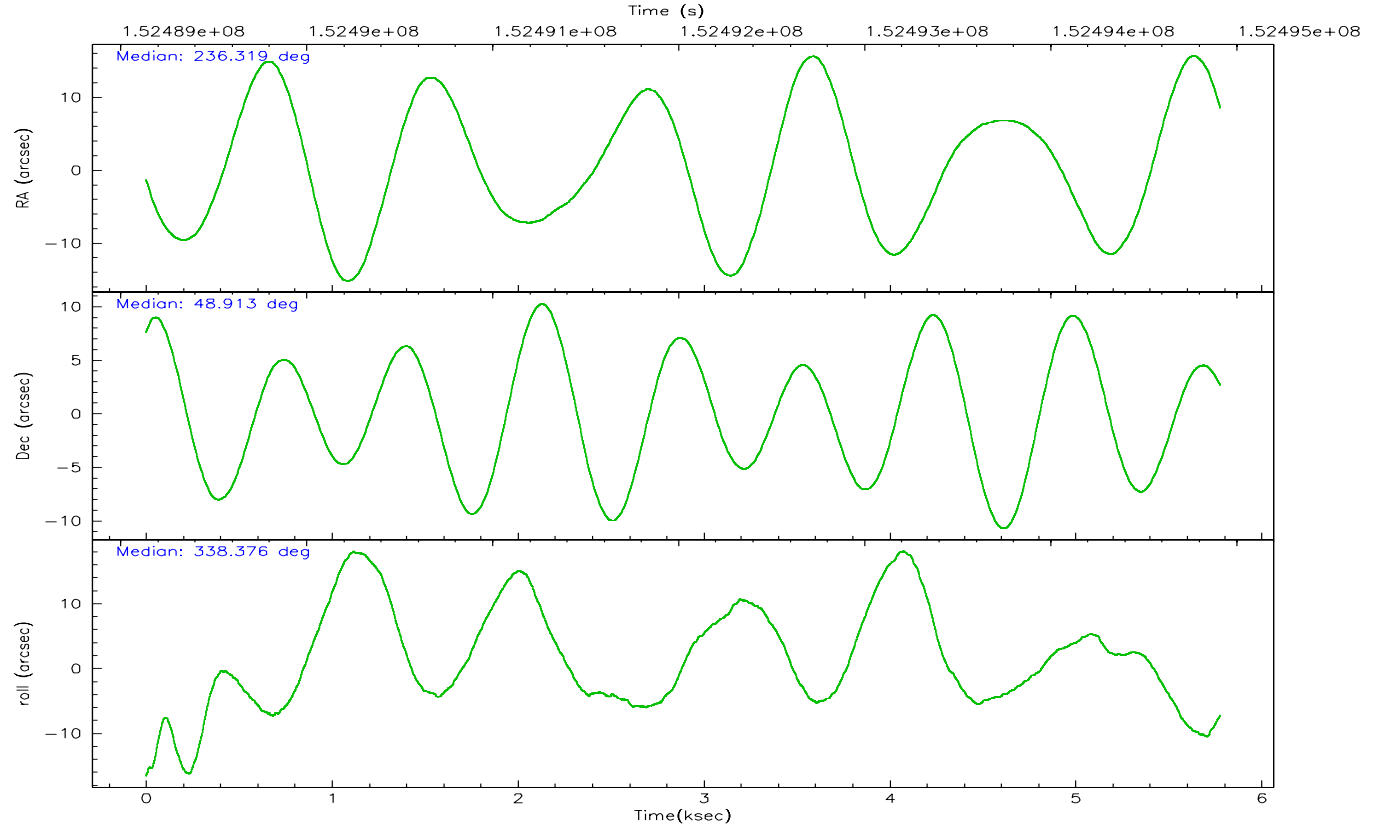
	ccd 2	ccd 3	ccd 5	ccd 6	ccd 7	ccd 8
grade 0 events	1927	1694	2075	1668	1007	3172
	5%	5%	4%	5%	2%	7%
grade 1 events	14	20	94	15	21	32
	0%	0%	0%	0%	0%	0%
grade 2 events	829	737	6371	701	4192	1908
	2%	2%	13%	2%	9%	4%
grade 3 events	394	328	449	376	837	1111
	1%	1%	0%	1%	1%	2%
grade 4 events	388	362	477	389	850	1033
	1%	1%	1%	1%	2%	2%
grade 5 events	1217	1349	2257	1415	2851	1840
	3%	4%	4%	4%	6%	4%
grade 6 events	596	676	11499	771	9532	2342
	1%	2%	24%	2%	22%	5%
grade 7 events	27206	26567	23165	26618	23072	28830
	83%	83%	49%	83%	54%	71%

## 2.2 Compared Parameters

Parameter	Planned	Actual	Parameter	Planned	Actual
Instrument	ACIS	ACIS	Obspar format version number	6	6
Detector	ACIS-235678	ACIS-235678	Obspar file type	PREDICTED	ACTUAL
Grating	NONE	NONE	Obspar update status	NONE	UPDATED
Data mode	FAINT	FAINT	Number of optional ACIS chips dropped	0	0
Observation mode	POINTING	POINTING	On-chip summing requested	N	N
Pointing RA	236.278273	236.3192406776903	Subarray requested	NONE	NONE
Pointing Dec	48.908907	48.91327020789657	Alternating exposures requested	N	N
Pointing Roll	338.248968	338.3747204537131	Primary exposure time	0.000000	3.2
SIM focus pos (mm)	-0.684267	-0.6828225247311905			
SIM defocus (mm)	0	0.001444936568705701			
SIM translation stage pos (mm)	-190.132523	-190.1425803651734			
SIM translation stage offset (mm)	0	0.01005778216563158			
Observation start time	152489911.184000	152488653.39731			
Observation start date	2002-10-31T22:17:27	2002-10-31T21:57:33			
Observation end time	152494911.184000	152496491.06014			
Observation end date	2002-10-31T23:40:47	2002-11-01T00:08:11			
Read mode	TIMED	TIMED			

### 2.3 Aspect



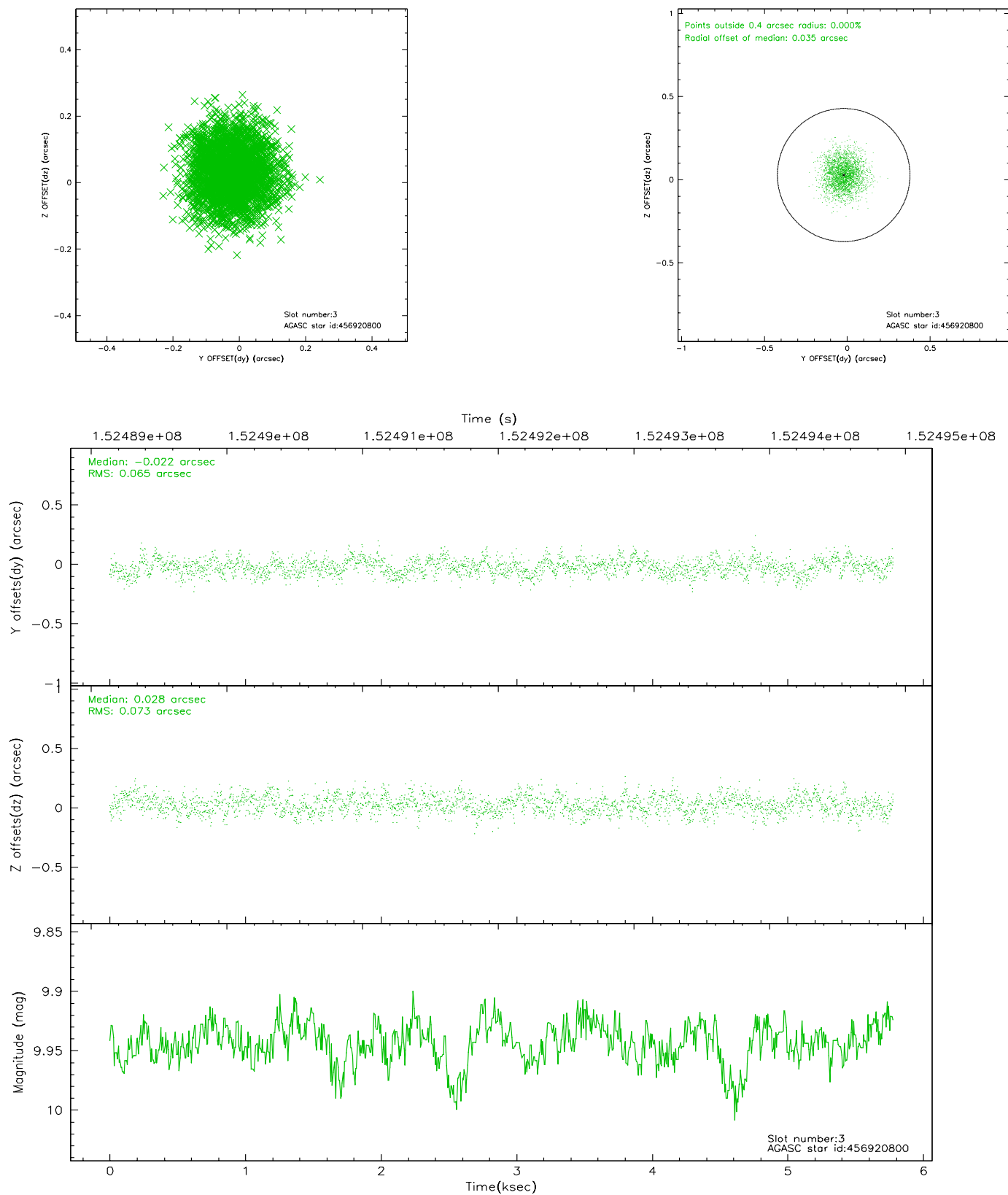


### Slot Statistics

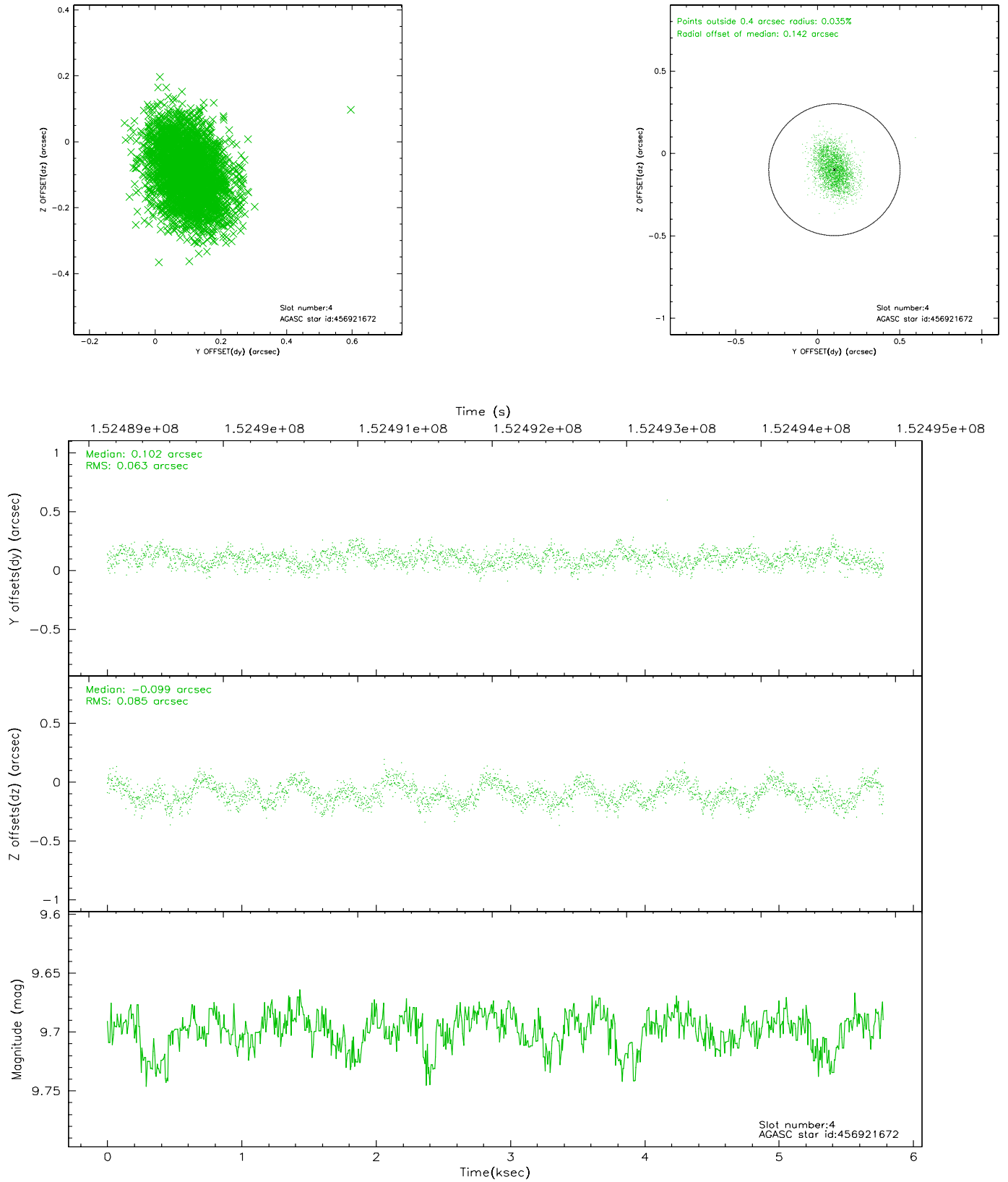
slot	status	id	mag	n_pts	med_dy	med_dz	dr1	dr2	ra	dec	mean_y	mean_z
0	FID	ACIS-S-2	7.10	1410	0.001	0.025	0.007	0.011	0.000000	0.000000	-755.20	-1729.32
1	FID	ACIS-S-4	7.20	1410	-0.072	-0.007	0.005	0.009	0.000000	0.000000	2157.55	178.03
2	FID	ACIS-S-5	7.24	1410	0.040	-0.009	0.006	0.010	0.000000	0.000000	-1806.66	172.92
3	GUIDE	456920800	9.94	2814	-0.022	0.028	0.106	0.168	235.056639	48.509858	-2181.38	-2392.24
4	GUIDE	456921672	9.70	2820	0.102	-0.099	0.113	0.182	236.158269	49.028264	-422.25	293.59
5	GUIDE	456922656	10.32	2815	0.097	0.062	0.124	0.204	235.227668	48.670004	-2006.48	-1708.18
6	GUIDE	457842136	10.21	2817	-0.023	-0.013	0.133	0.220	237.046698	48.772883	1871.89	228.66
7	GUIDE	457841232	8.76	2819	-0.144	0.024	0.064	0.105	237.239608	48.687132	2414.38	118.53

## 2.4 Star Slots

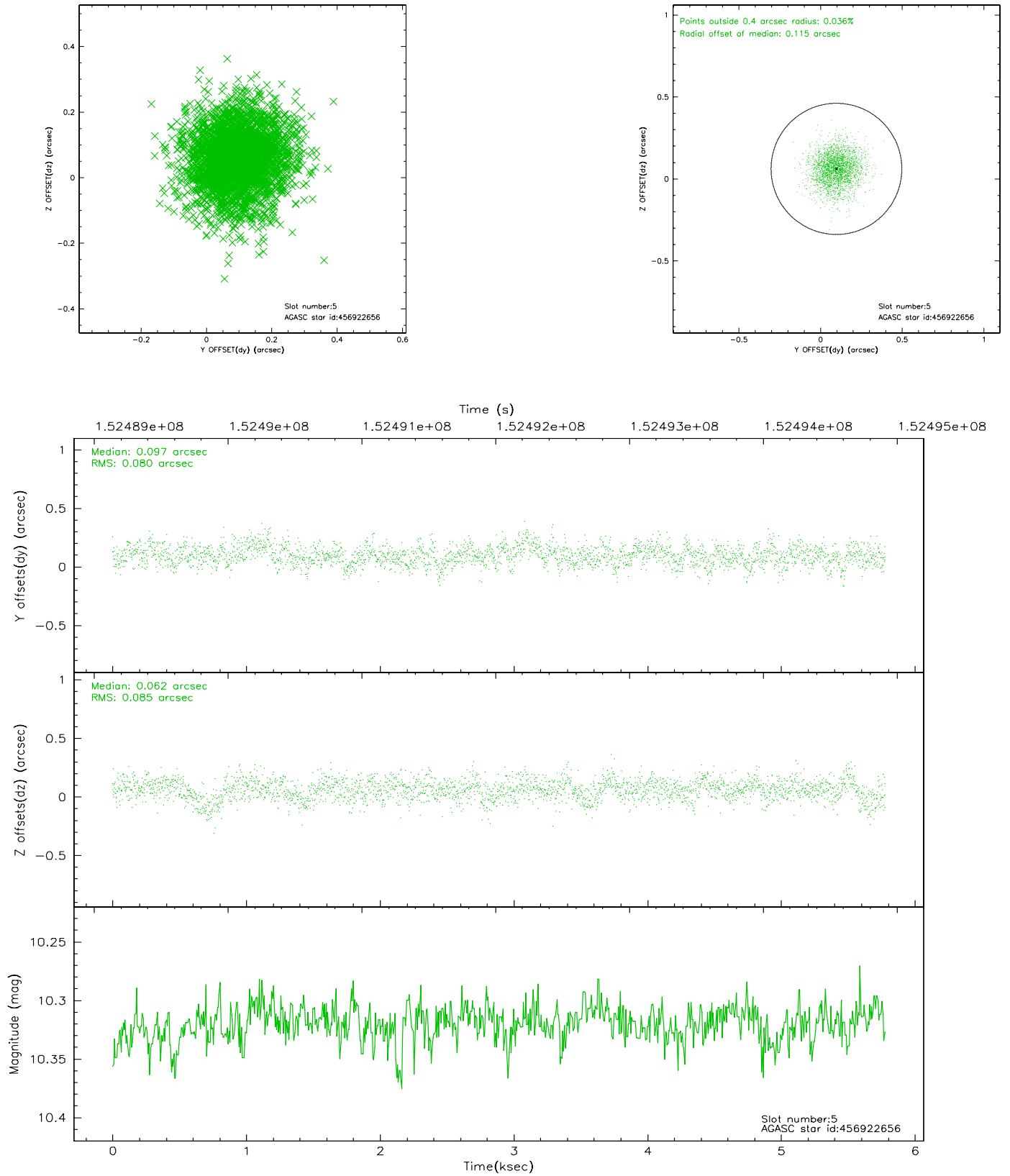
### 2.4.1 Slot 3



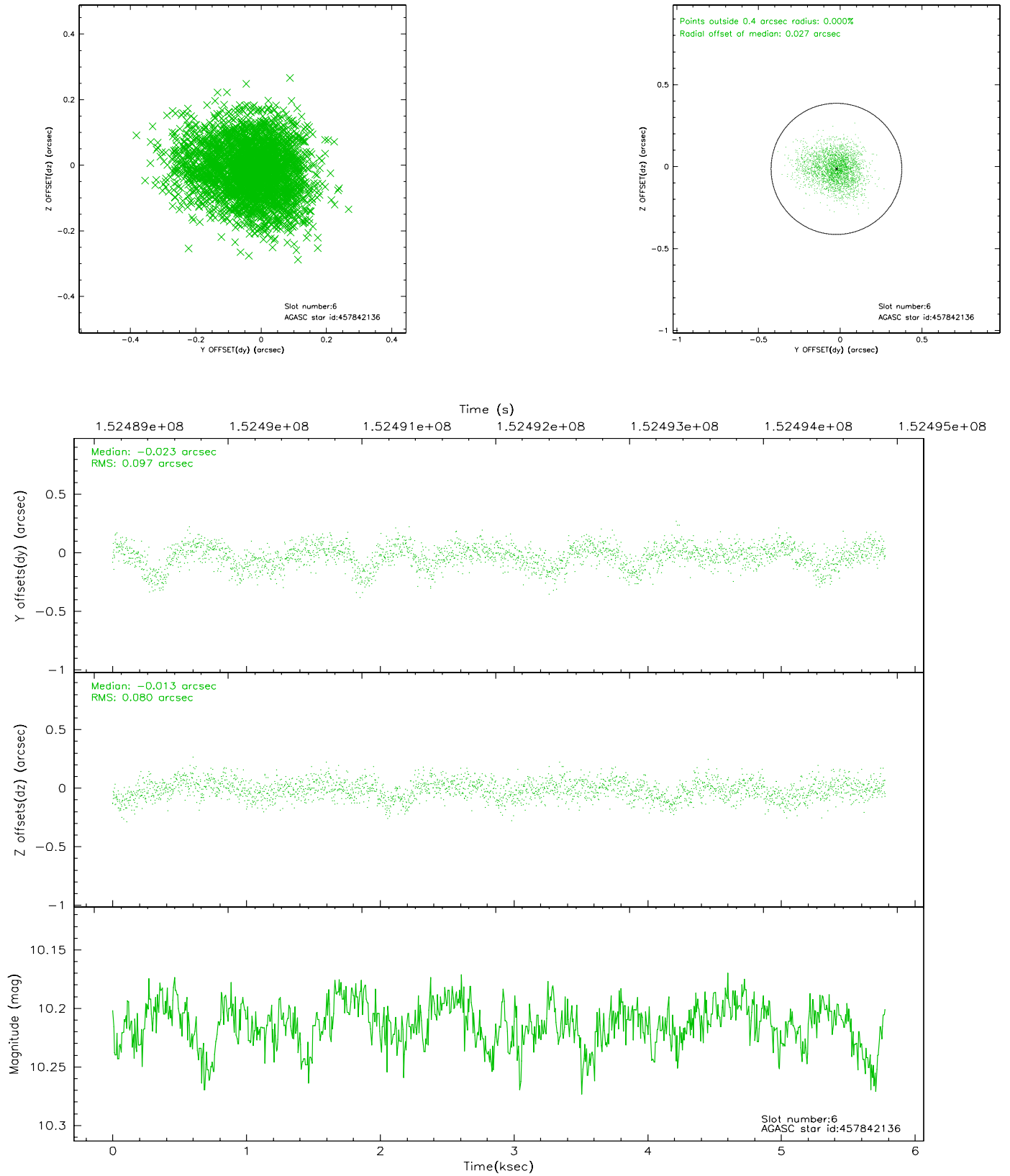
## 2.4.2 Slot 4



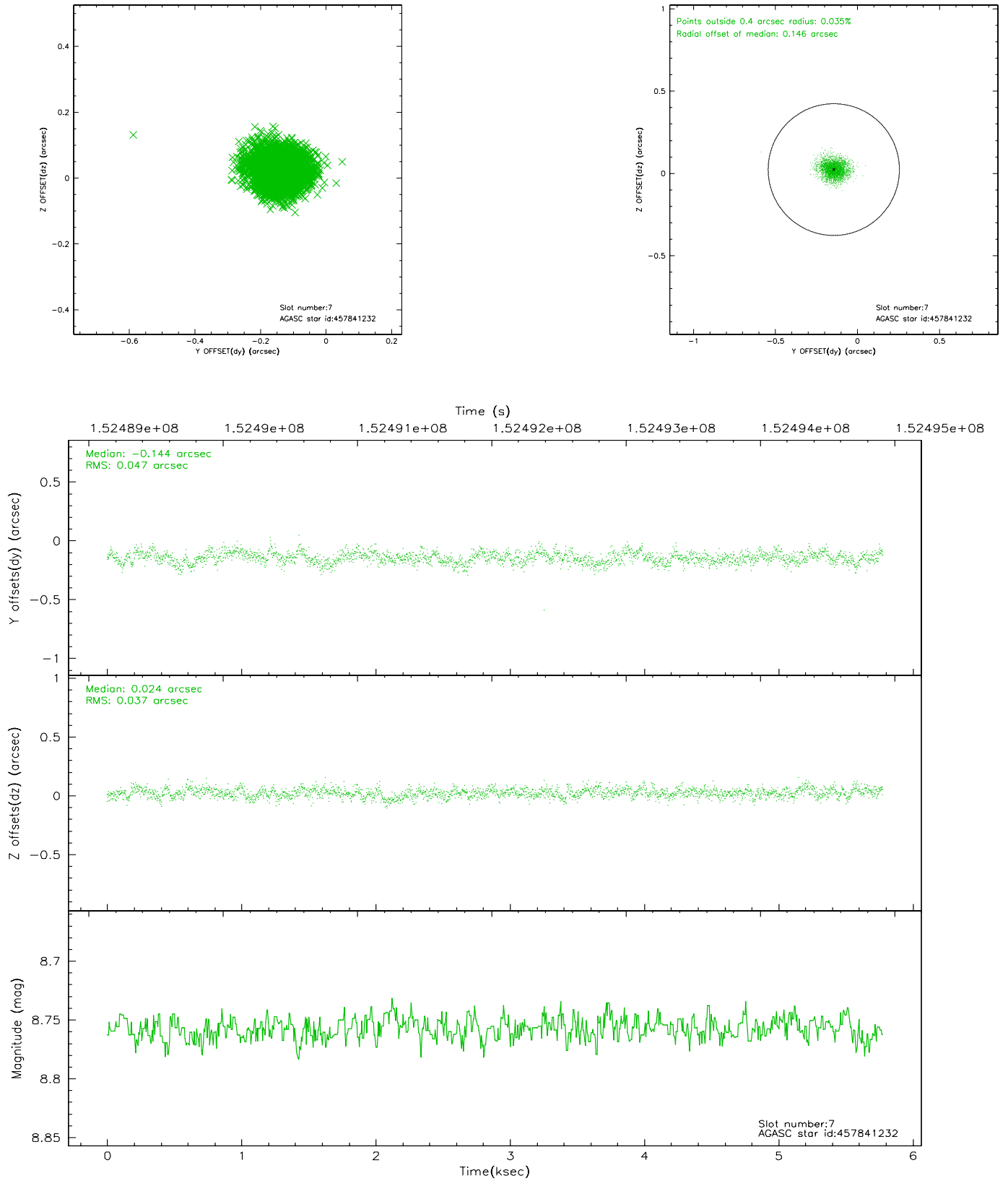
### 2.4.3 Slot 5



## 2.4.4 Slot 6

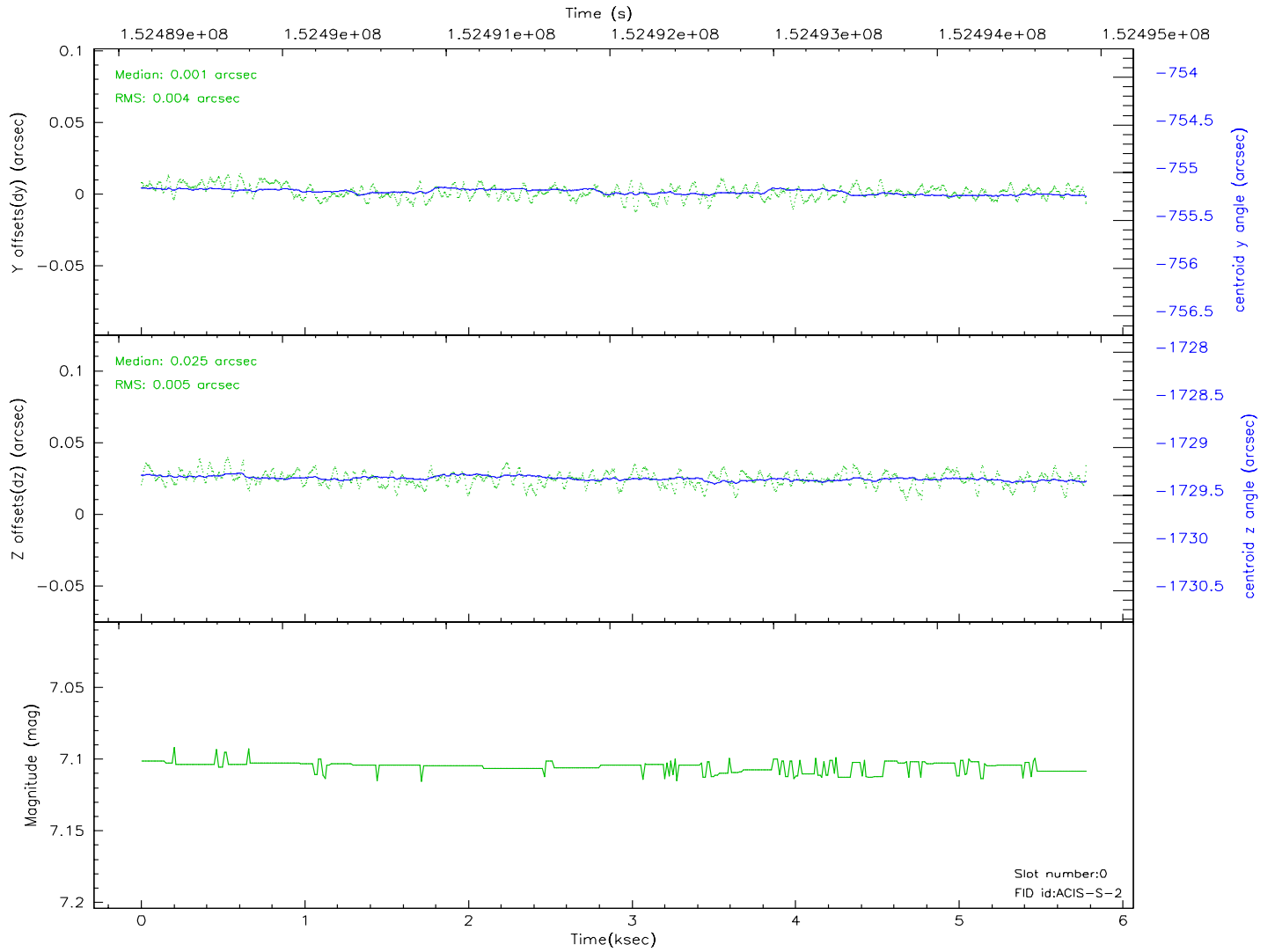
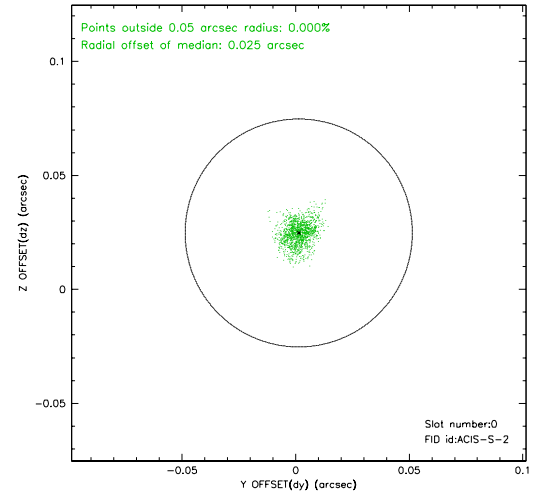
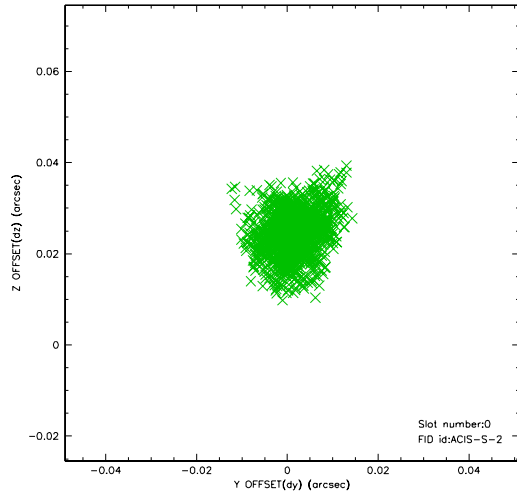


## 2.4.5 Slot 7

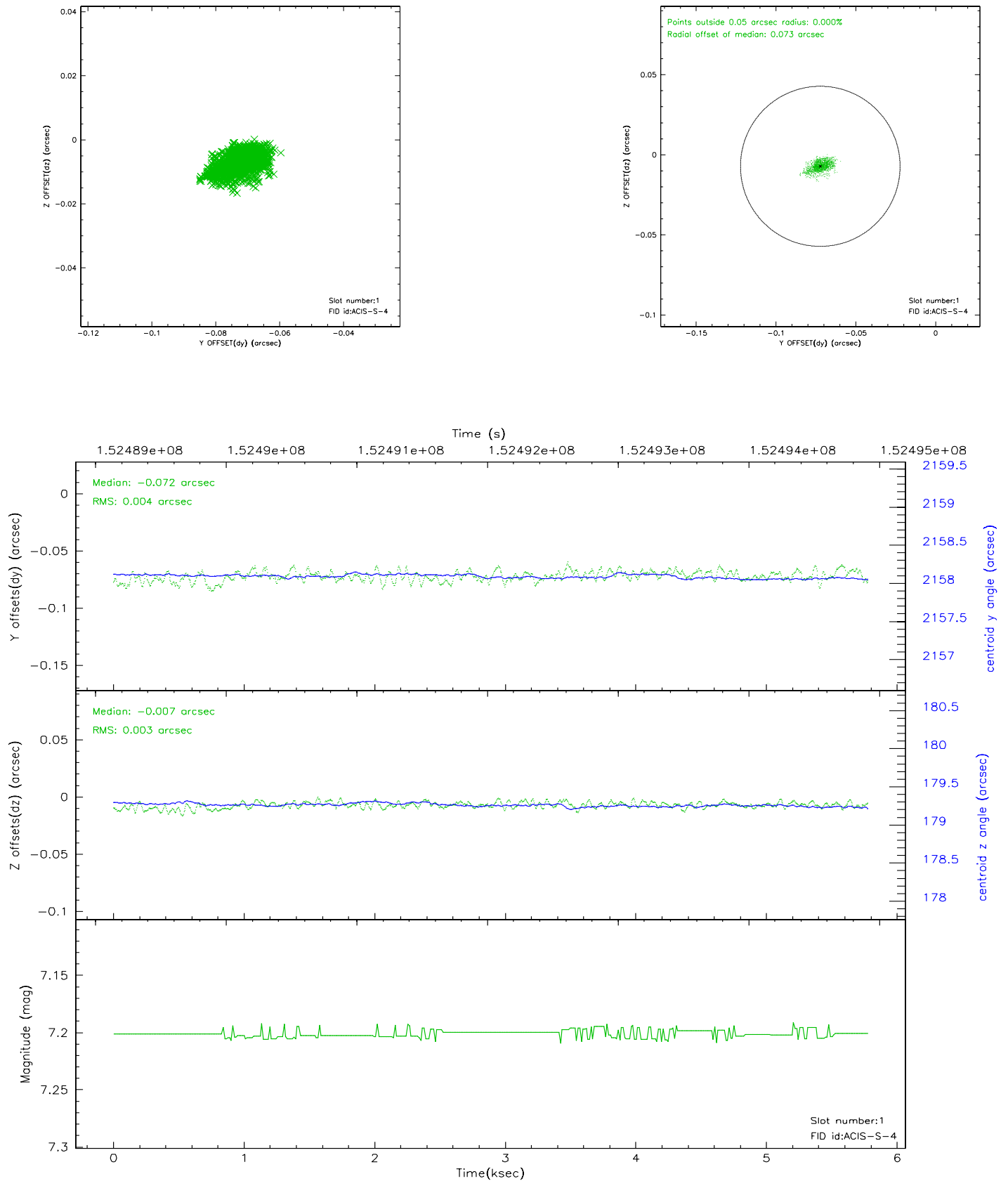


## 2.5 FID Slots

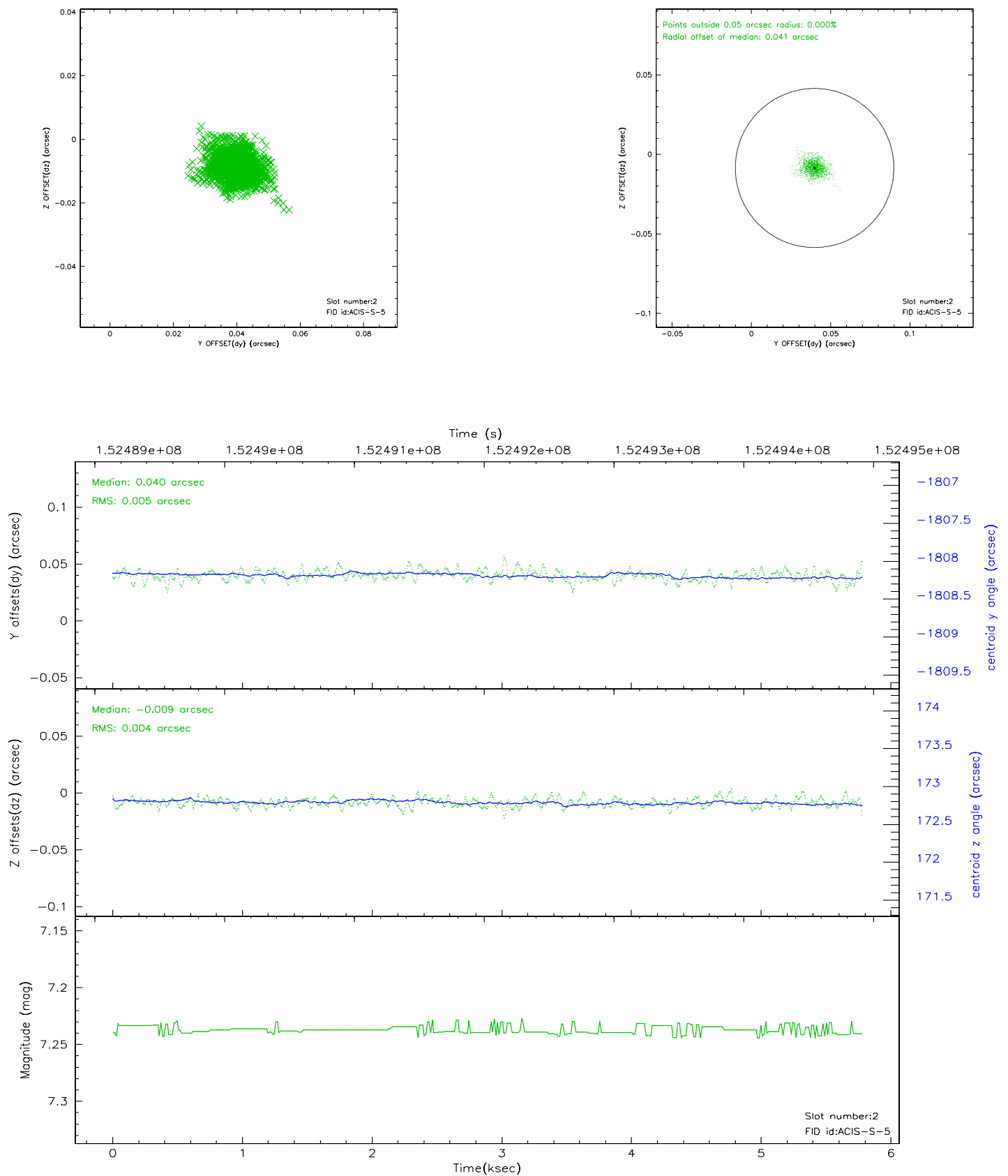
### 2.5.1 Slot 0



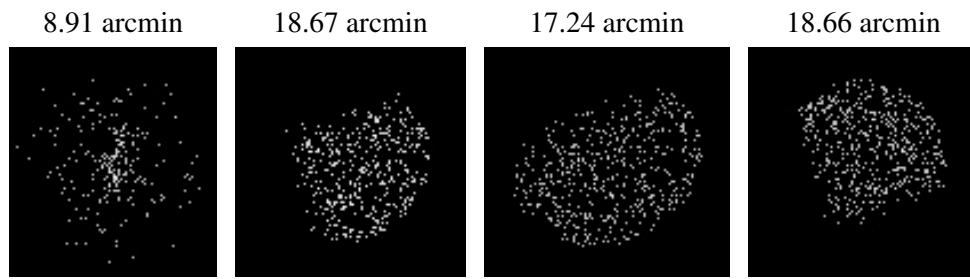
## 2.5.2 Slot 1



### 2.5.3 Slot 2



### 3 Point Sources



## A Summary

### A.1 Status

V&V Scientist	Jen Lauer
V&V Date (YYYY-MM-DD)	2006.10.12
V&V Edition	1
V&V Disposition and Status	OK
V&V Charge Time	4.963

### A.2 Comments