

# V&V Reference Report

## L2 ASCDS Version : 7.6.9

Observation 3333 - L2 Version 001  
Chandra X-Ray Center

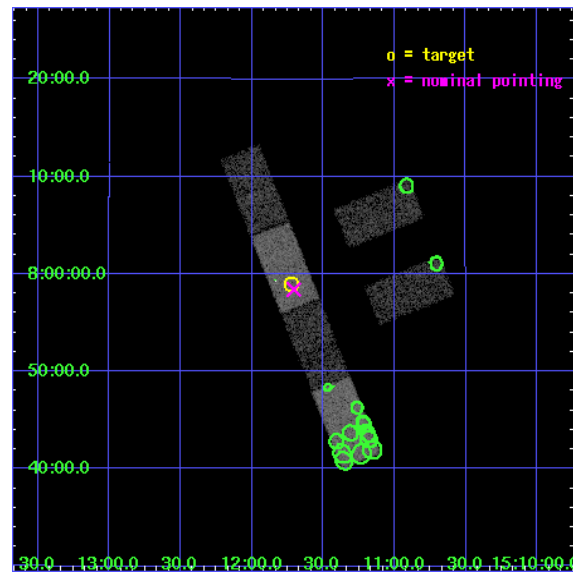
L2 Processing Date : Sep 26 2006

## Contents

<b>1</b>	<b>Front</b>	<b>2</b>
<b>2</b>	<b>OBI</b>	<b>3</b>
2.1	OBI . . . . .	3
2.1.1	Images . . . . .	3
2.1.2	Bias . . . . .	3
2.1.3	Parameters . . . . .	4
2.1.4	Events . . . . .	4
2.2	Compared Parameters . . . . .	5
2.3	Aspect . . . . .	6
2.4	Star Slots . . . . .	9
2.4.1	Slot 3 . . . . .	9
2.4.2	Slot 4 . . . . .	10
2.4.3	Slot 5 . . . . .	11
2.4.4	Slot 6 . . . . .	12
2.4.5	Slot 7 . . . . .	13
2.5	FID Slots . . . . .	14
2.5.1	Slot 0 . . . . .	14
2.5.2	Slot 1 . . . . .	15
2.5.3	Slot 2 . . . . .	16
<b>3</b>	<b>Point Sources</b>	<b>17</b>
<b>A</b>	<b>Summary</b>	<b>18</b>
A.1	Status . . . . .	18
A.2	Comments . . . . .	18

# 1 Front

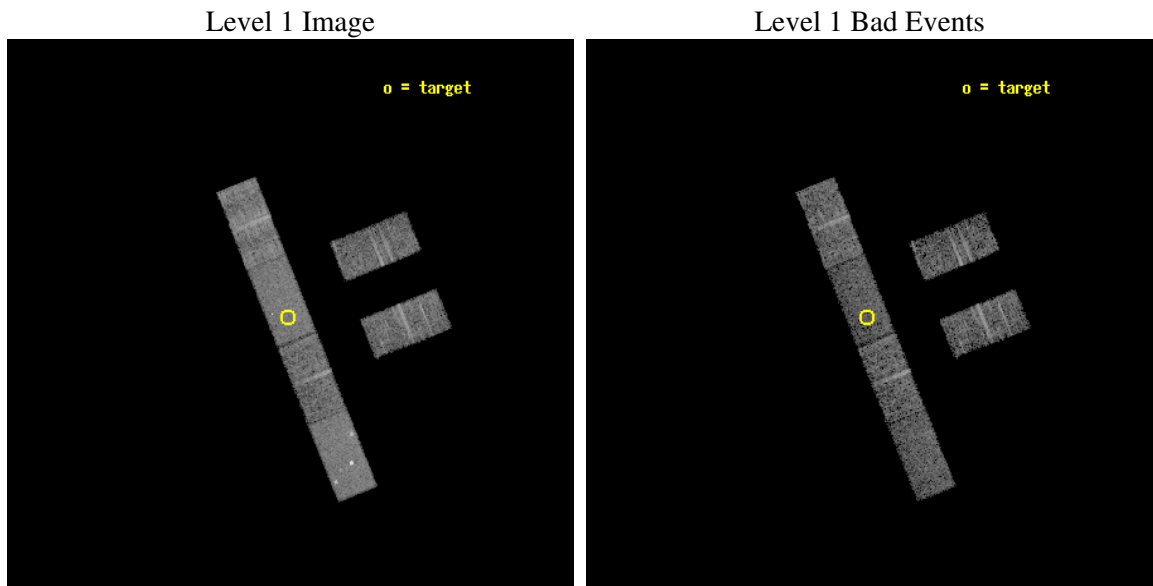
seq_num	900172
obs_id	3333
title	THE SHEEP SURVEY: WHAT KIND OF OBJECTS MAKE THE X-RAY BACKGROUND?
observer	Professor Kirpal Nandra
object	AX J1511.7+0758
dtcycle	0
cycle	P
ra_targ	227.931667
dec_targ	7.981667
ra_nom	227.92645895241
dec_nom	7.9735670748609
roll_nom	248.21561127783
revision	2
ontime	5247.0000347495
livetime	5130.035231472
ontime2	5247.0000347495
ontime3	5247.0000347495
ontime5	5247.0000347495
ontime6	5247.0000347495
ontime7	5247.0000347495
ontime8	5247.0000347495
l2events	41536



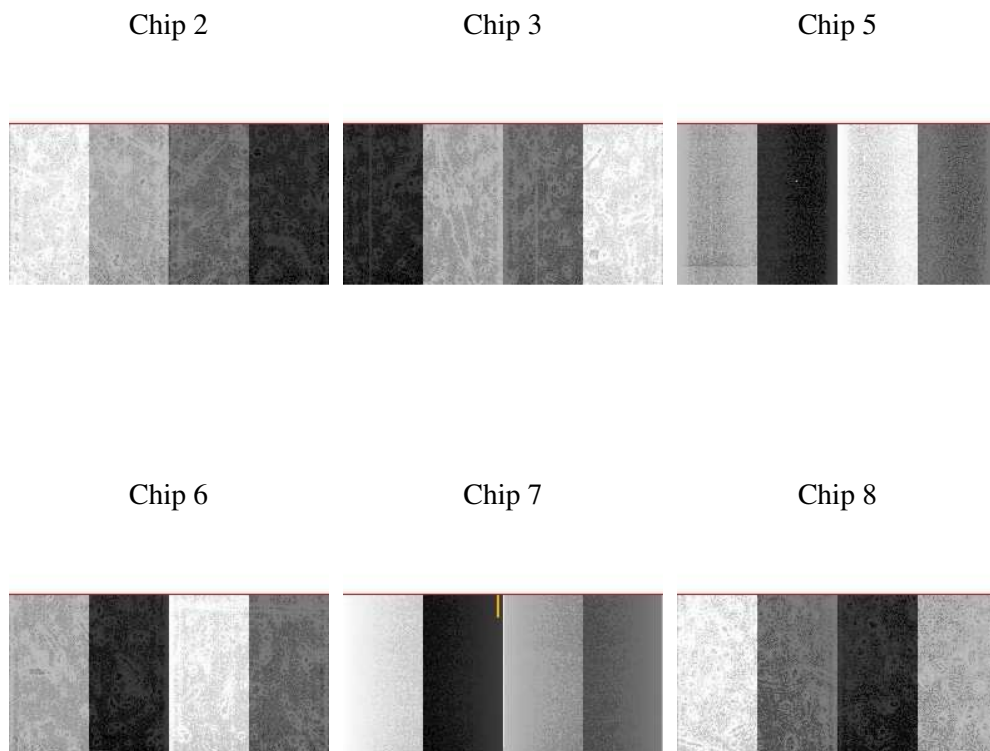
## 2 OBI

### 2.1 OBI

#### 2.1.1 Images



#### 2.1.2 Bias



### 2.1.3 Parameters

obi_num	0
ascdsver	7.6.9
caldsver	3.2.3
date	2006-09-26T10:02:33
revision	2

sched_exp_time	5000.000000
ontime	5407.0661624074
ontime2	5407.0661624074
ontime3	5407.0661624074
ontime5	5407.0661624074
ontime6	5407.0661624074
ontime7	5407.0661624074
ontime8	5407.0661624074
l1events	161306

### 2.1.4 Events

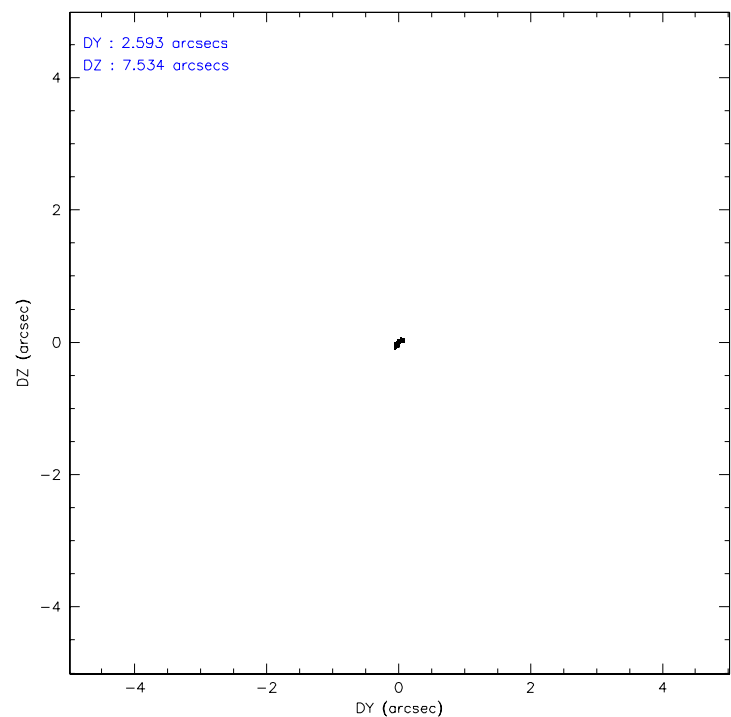
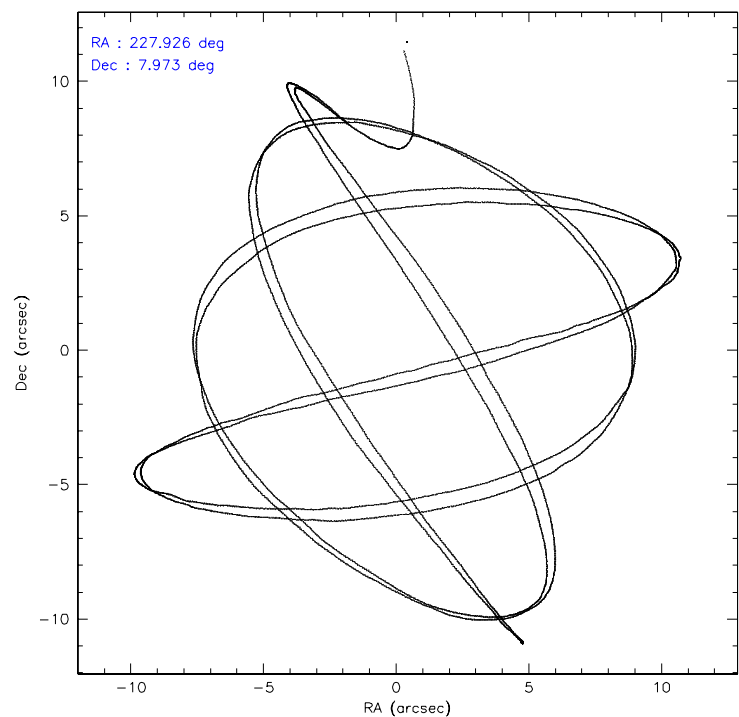
	ccd 2	ccd 3	ccd 5	ccd 6	ccd 7	ccd 8
level 1 events	23245	20901	32870	22619	29044	32627
rejected events	19434	17314	15607	18885	15270	21744
rejected %	83%	82%	47%	83%	52%	66%

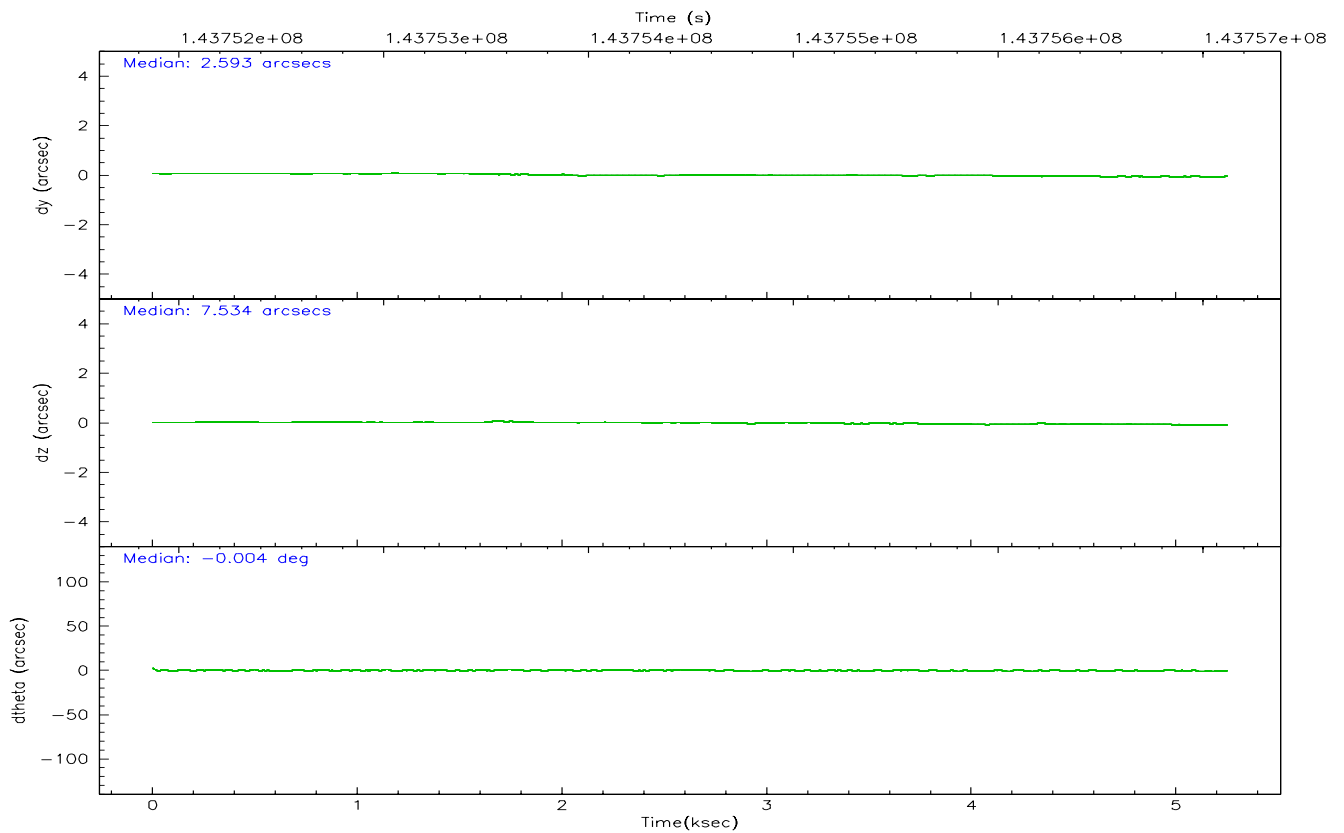
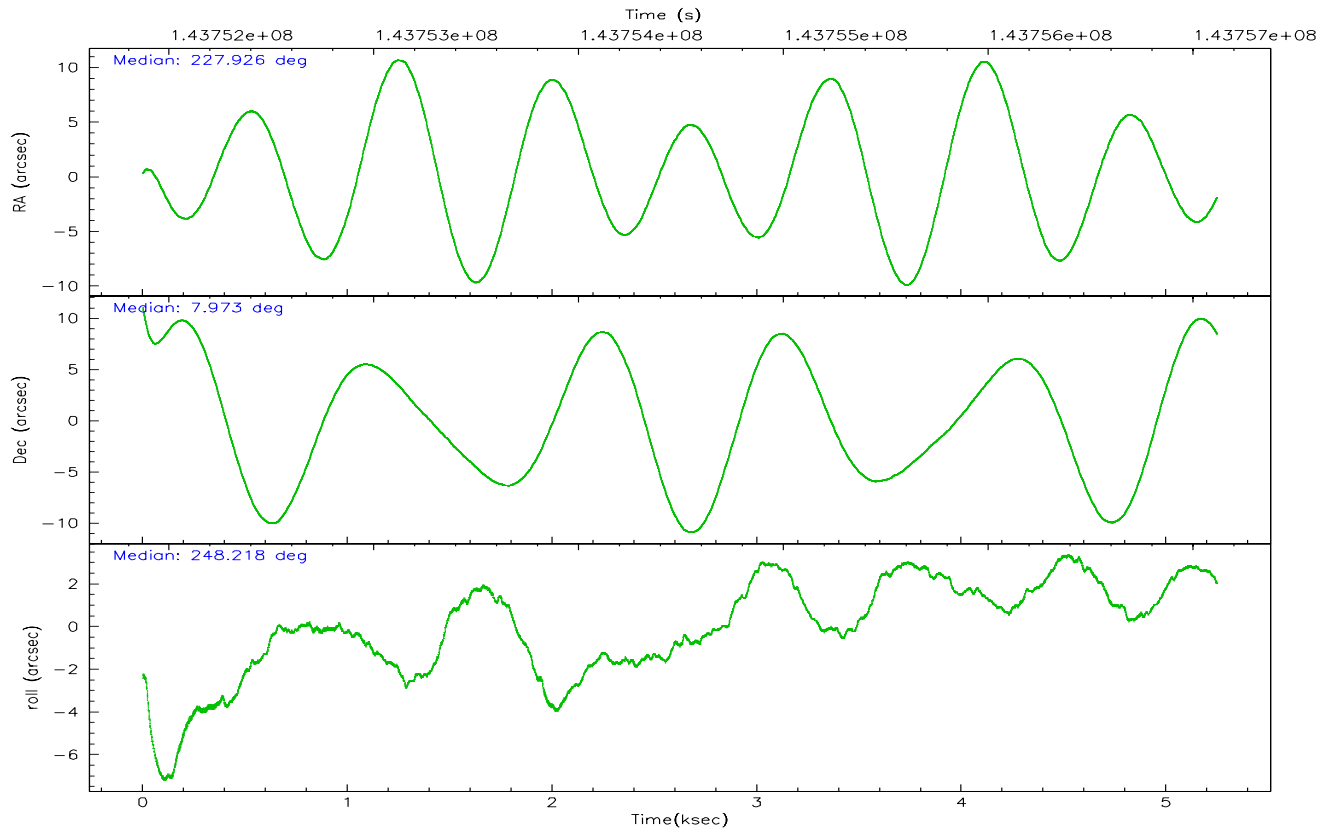
	ccd 2	ccd 3	ccd 5	ccd 6	ccd 7	ccd 8
grade 0 events	1908	1794	3358	1789	1349	3600
	8%	8%	10%	7%	4%	11%
grade 1 events	11	9	62	7	21	14
	0%	0%	0%	0%	0%	0%
grade 2 events	818	680	5490	786	3791	2147
	3%	3%	16%	3%	13%	6%
grade 3 events	292	319	439	318	974	1313
	1%	1%	1%	1%	3%	4%
grade 4 events	348	297	399	320	861	1150
	1%	1%	1%	1%	2%	3%
grade 5 events	683	712	1301	743	1841	1032
	2%	3%	3%	3%	6%	3%
grade 6 events	582	619	8132	650	7227	2939
	2%	2%	24%	2%	24%	9%
grade 7 events	18603	16471	13689	18006	12980	20432
	80%	78%	41%	79%	44%	62%

## 2.2 Compared Parameters

Parameter	Planned	Actual	Parameter	Planned	Actual
Instrument	ACIS	ACIS	Obspar format version number	6	6
Detector	ACIS-235678	ACIS-235678	Obspar file type	PREDICTED	ACTUAL
Grating	NONE	NONE	Obspar update status	NONE	UPDATED
Data mode	FAINT	FAINT	Number of optional ACIS chips dropped	0	0
Observation mode	POINTING	POINTING	On-chip summing requested	N	N
Pointing RA	227.922211	227.9264589524073	Subarray requested	1/2	1/2
Pointing Dec	8.000348	7.973567074860854	Subarray start row	0	257
Pointing Roll	248.059561	248.2156112778344	Subarray row count	1024	512
SIM focus pos (mm)	-0.684267	-0.6828225247311905	Alternating exposures requested	N	N
SIM defocus (mm)	0	0.001444936568705701	Primary exposure time	0.000000	1.8
SIM translation stage pos (mm)	-190.132523	-190.1400660498719			
SIM translation stage offset (mm)	0	0.00754346686406393			
Observation start time	143752122.184000	143751130.73625			
Observation start date	2002-07-22T19:07:38	2002-07-22T18:52:10			
Observation end time	143757122.184000	143757910.08653			
Observation end date	2002-07-22T20:30:58	2002-07-22T20:45:10			
Read mode	TIMED	TIMED			

2.3 Aspect





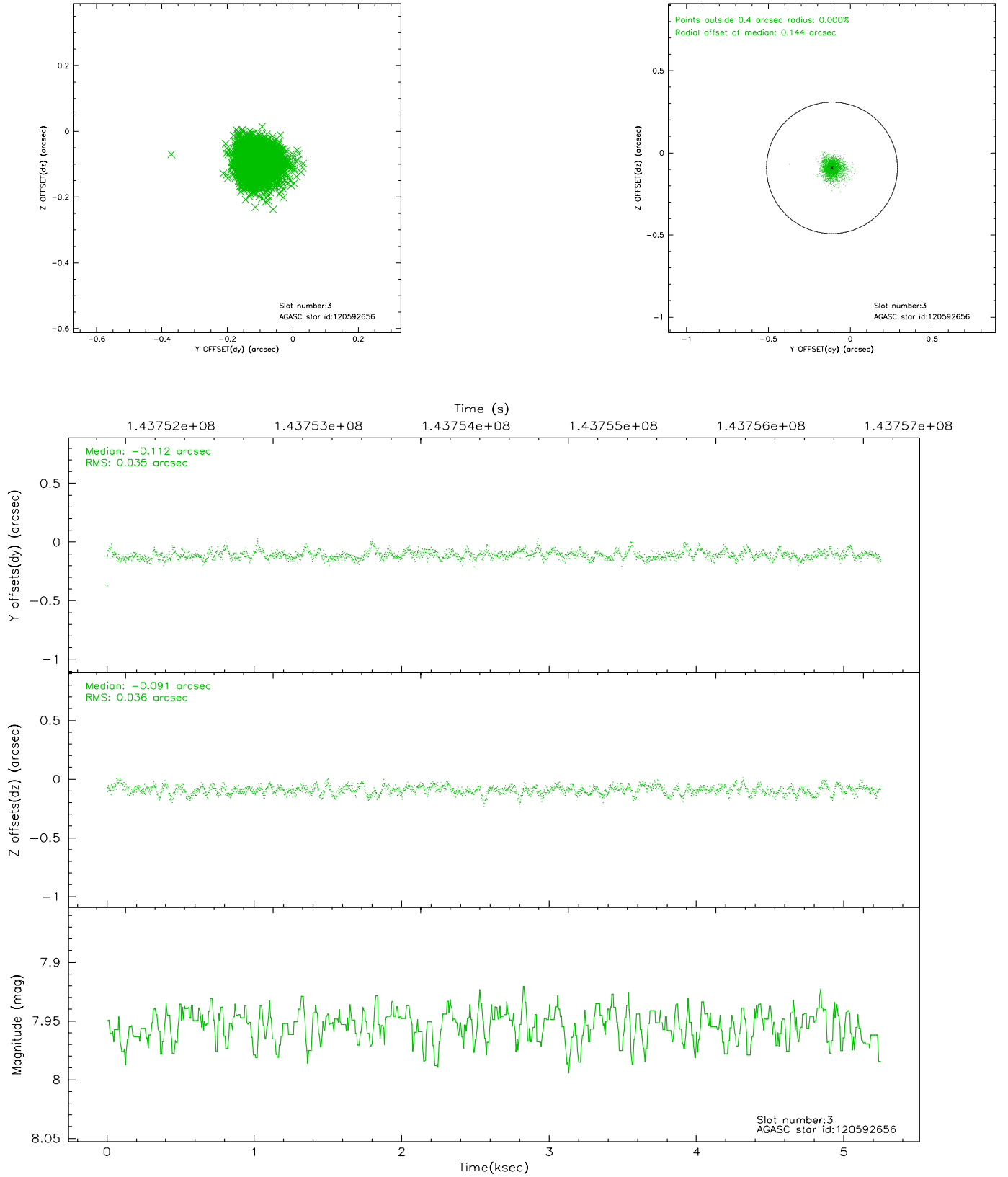
### Slot Statistics

slot	status	id	mag	n_pts	med_dy	med_dz	dr1	dr2	ra	dec	mean_y	mean_z
0	FID	ACIS-S-2	7.11	1281	0.004	0.031	0.007	0.011	0.000000	0.000000	-755.24	-1728.67
1	FID	ACIS-S-4	7.20	1281	-0.084	-0.010	0.005	0.008	0.000000	0.000000	2157.44	178.56
2	FID	ACIS-S-5	7.23	1281	0.048	-0.012	0.006	0.009	0.000000	0.000000	-1806.54	173.57
3	GUIDE	120592656	7.95	2562	-0.112	-0.091	0.053	0.087	227.893195	8.517064	-1687.48	-790.10
4	GUIDE	45484240	8.87	2561	0.153	0.043	0.063	0.106	228.204200	7.399711	1628.33	1742.14
5	GUIDE	120599784	9.29	2562	0.023	0.012	0.078	0.130	228.281539	8.037424	-602.63	1139.53
6	GUIDE	120586728	9.37	2558	-0.009	-0.010	0.085	0.138	228.100014	8.601049	-2243.24	-219.67
7	GUIDE	120600016	9.57	2561	-0.051	0.047	0.103	0.168	228.430139	7.688520	361.85	2100.70

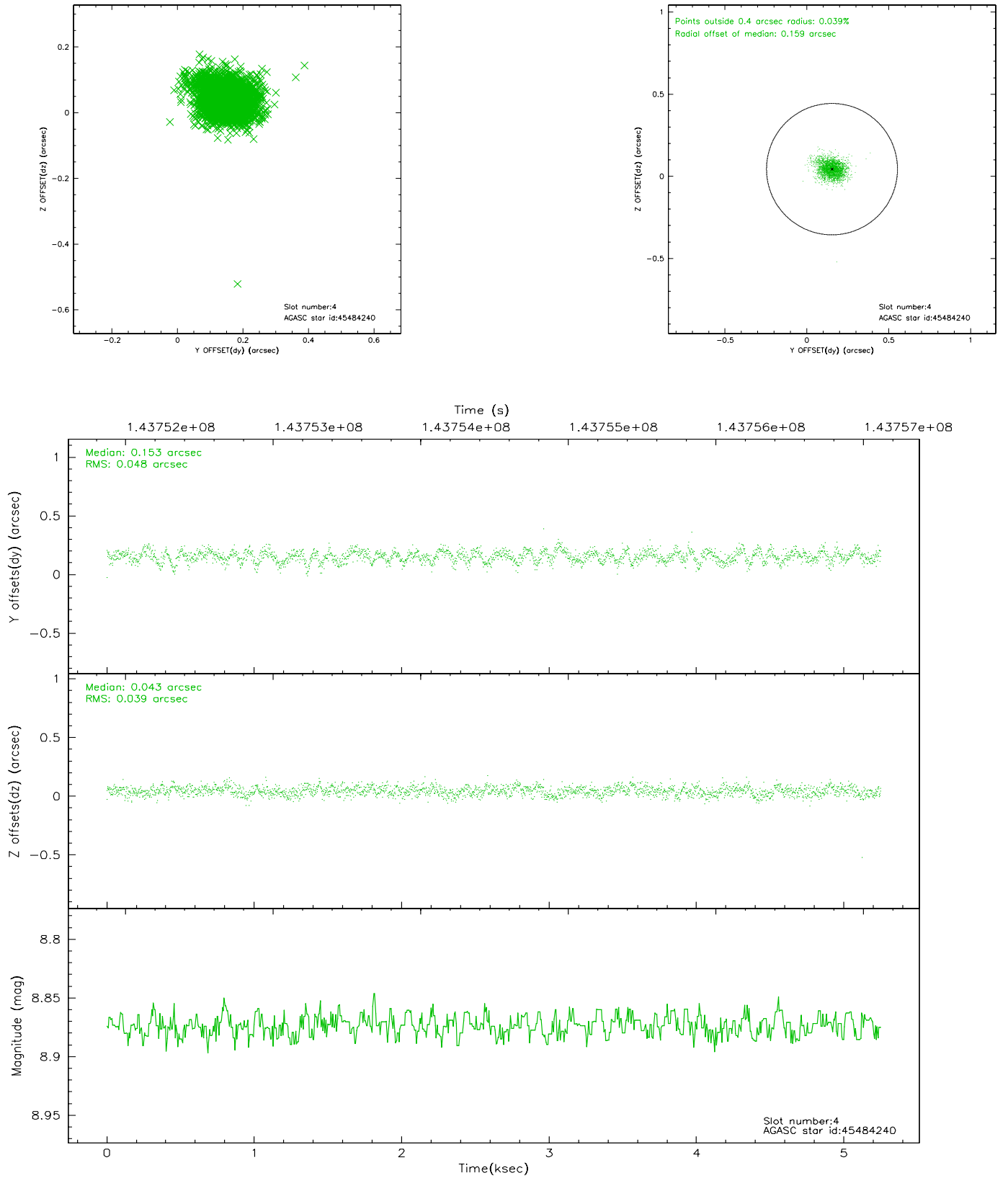


## 2.4 Star Slots

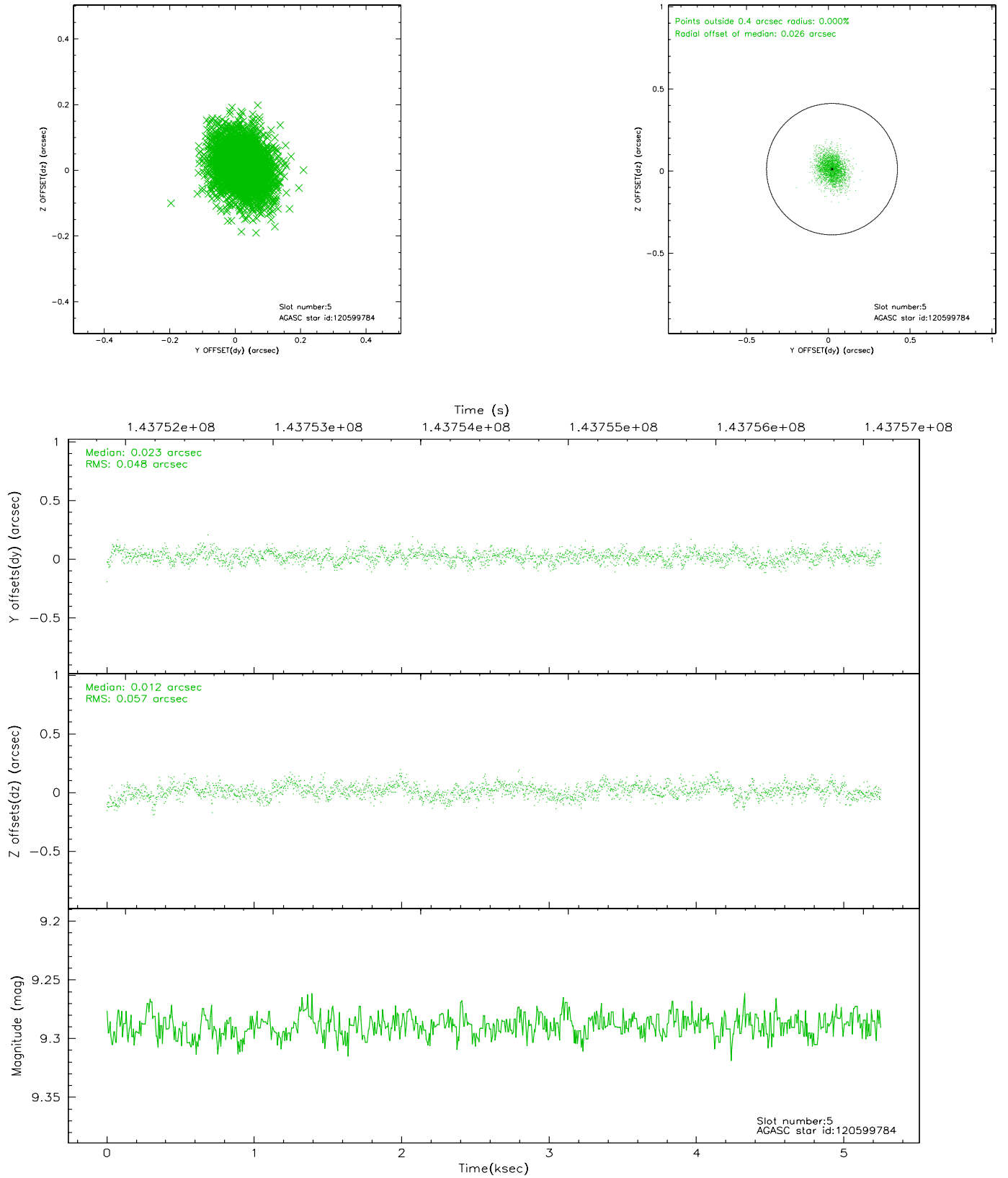
### 2.4.1 Slot 3



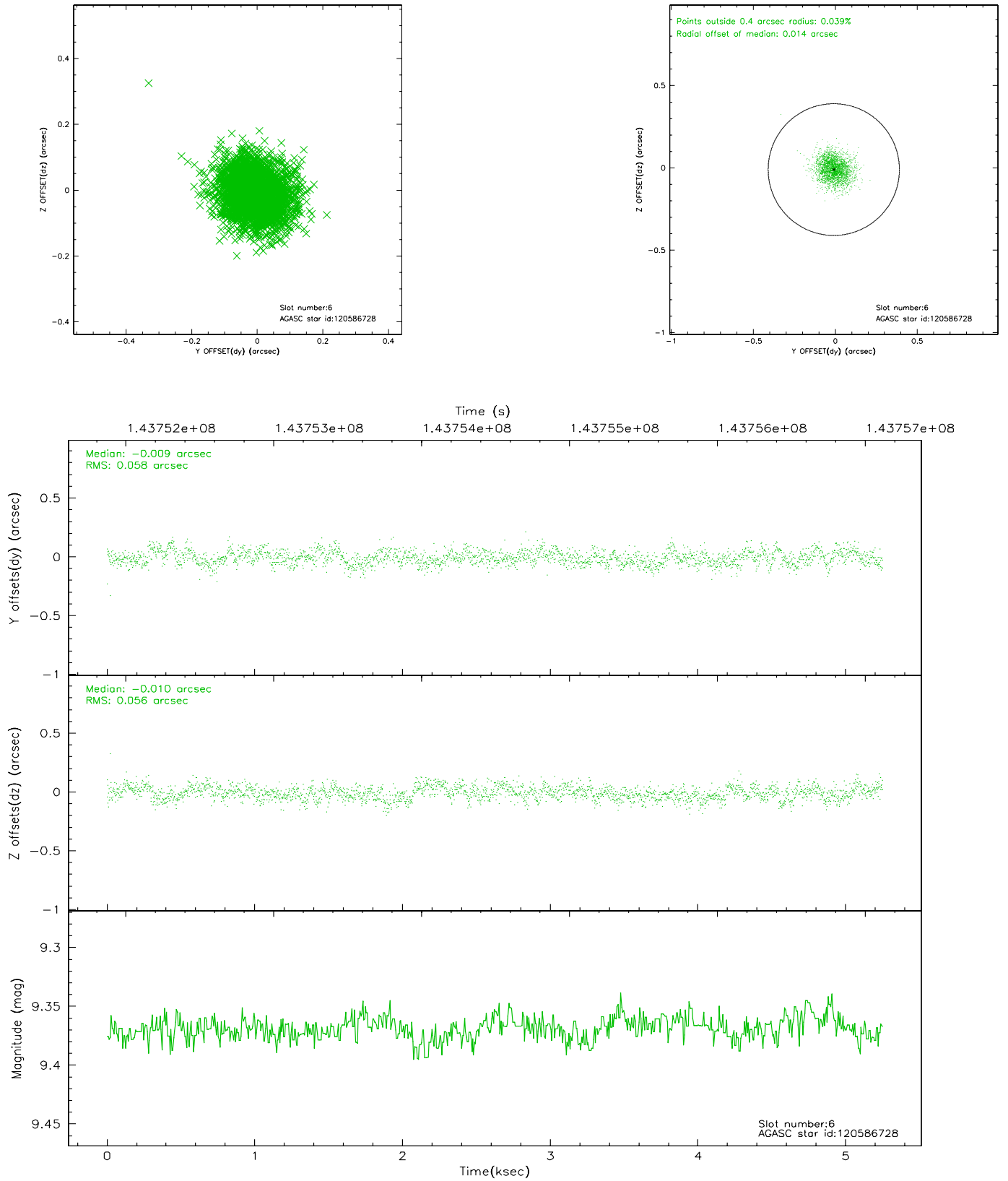
## 2.4.2 Slot 4



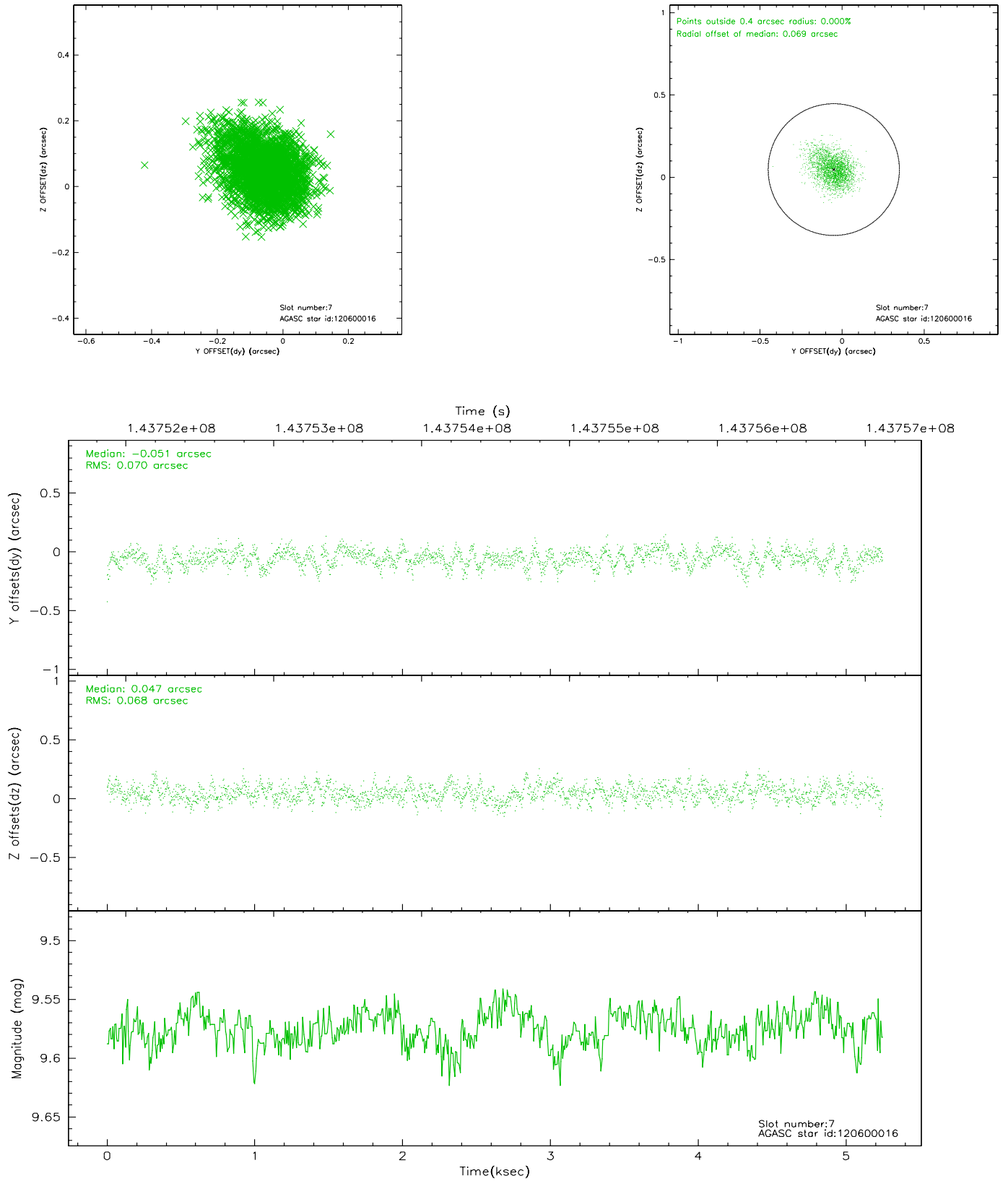
### 2.4.3 Slot 5



## 2.4.4 Slot 6

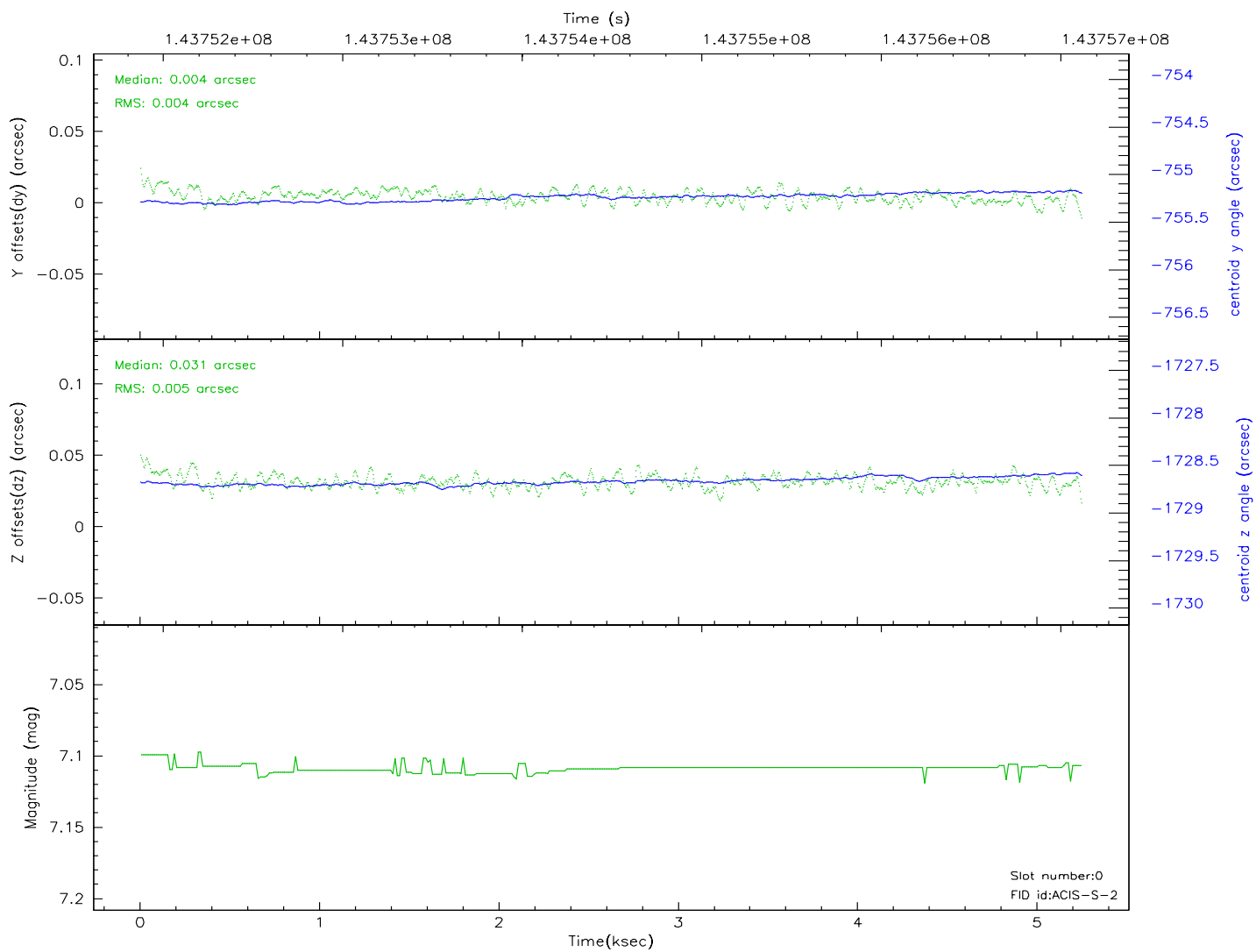
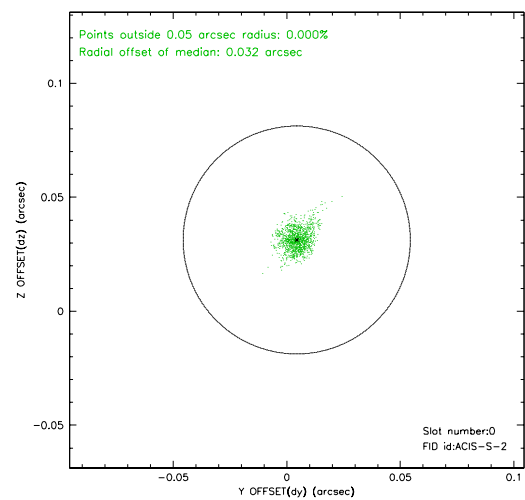
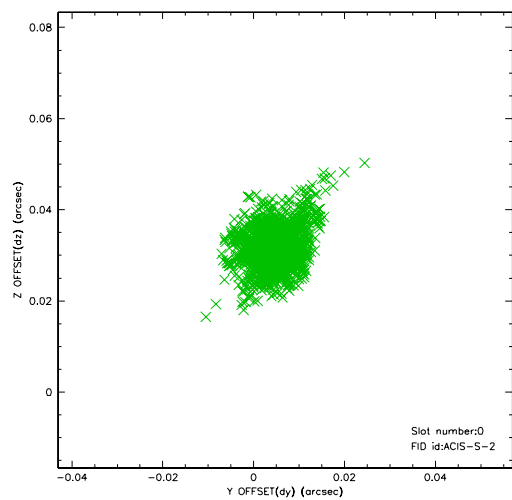


## 2.4.5 Slot 7

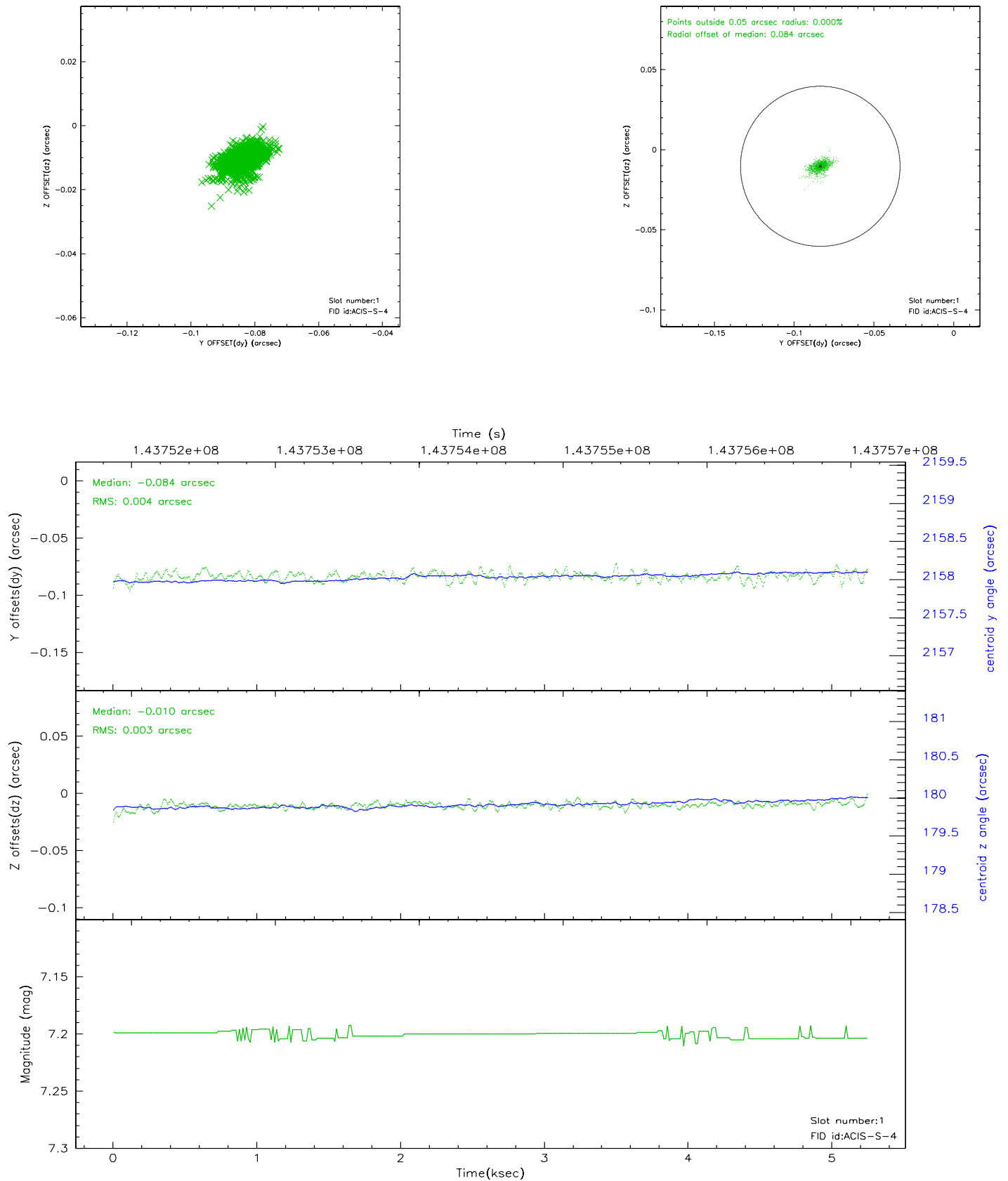


## 2.5 FID Slots

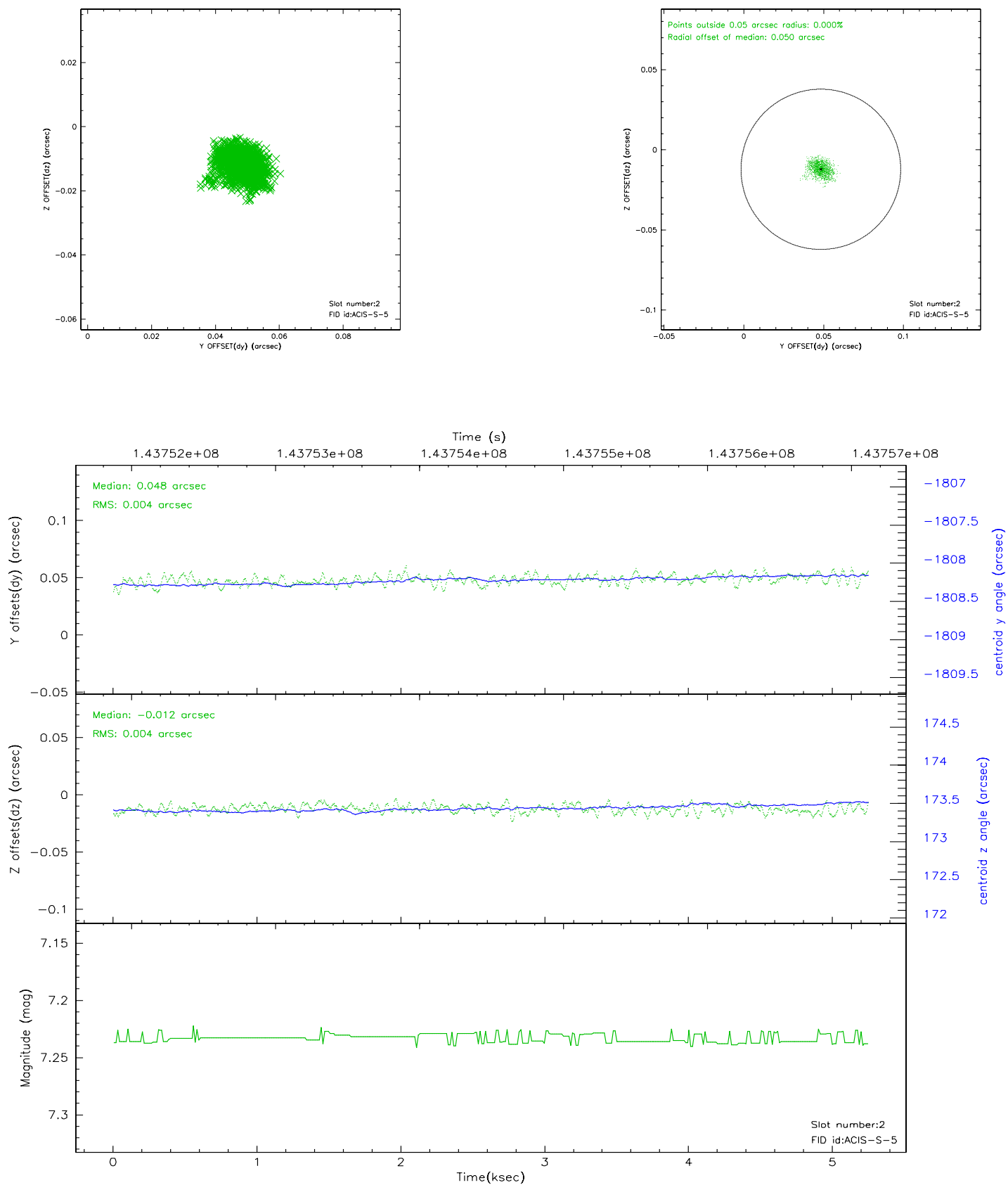
### 2.5.1 Slot 0



## 2.5.2 Slot 1

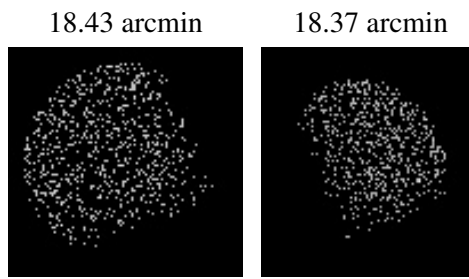


### 2.5.3 Slot 2





### 3 Point Sources



## A Summary

### A.1 Status

V&V Scientist	Jen Lauer
V&V Date (YYYY-MM-DD)	2006.09.26
V&V Edition	1
V&V Disposition and Status	OK
V&V Charge Time	5.247

### A.2 Comments