

# V&V Reference Report

## L2 ASCDS Version : 7.6.9

Observation 3325 - L2 Version 001  
Chandra X-Ray Center

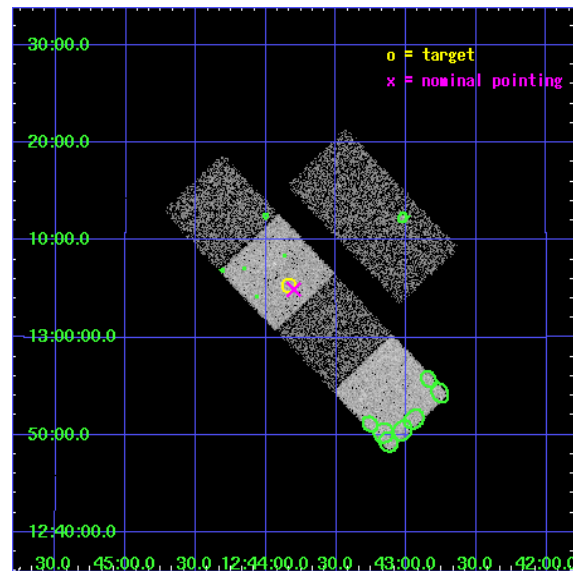
L2 Processing Date : Sep 14 2006

## Contents

<b>1</b>	<b>Front</b>	<b>2</b>
<b>2</b>	<b>OBI</b>	<b>3</b>
2.1	OBI . . . . .	3
2.1.1	Images . . . . .	3
2.1.2	Bias . . . . .	3
2.1.3	Parameters . . . . .	4
2.1.4	Events . . . . .	4
2.2	Compared Parameters . . . . .	5
2.3	Aspect . . . . .	6
2.4	Star Slots . . . . .	9
2.4.1	Slot 3 . . . . .	9
2.4.2	Slot 4 . . . . .	10
2.4.3	Slot 5 . . . . .	11
2.4.4	Slot 6 . . . . .	12
2.4.5	Slot 7 . . . . .	13
2.5	FID Slots . . . . .	14
2.5.1	Slot 0 . . . . .	14
2.5.2	Slot 1 . . . . .	15
2.5.3	Slot 2 . . . . .	16
<b>3</b>	<b>Point Sources</b>	<b>17</b>
<b>A</b>	<b>Summary</b>	<b>18</b>
A.1	Status . . . . .	18
A.2	Comments . . . . .	18

# 1 Front

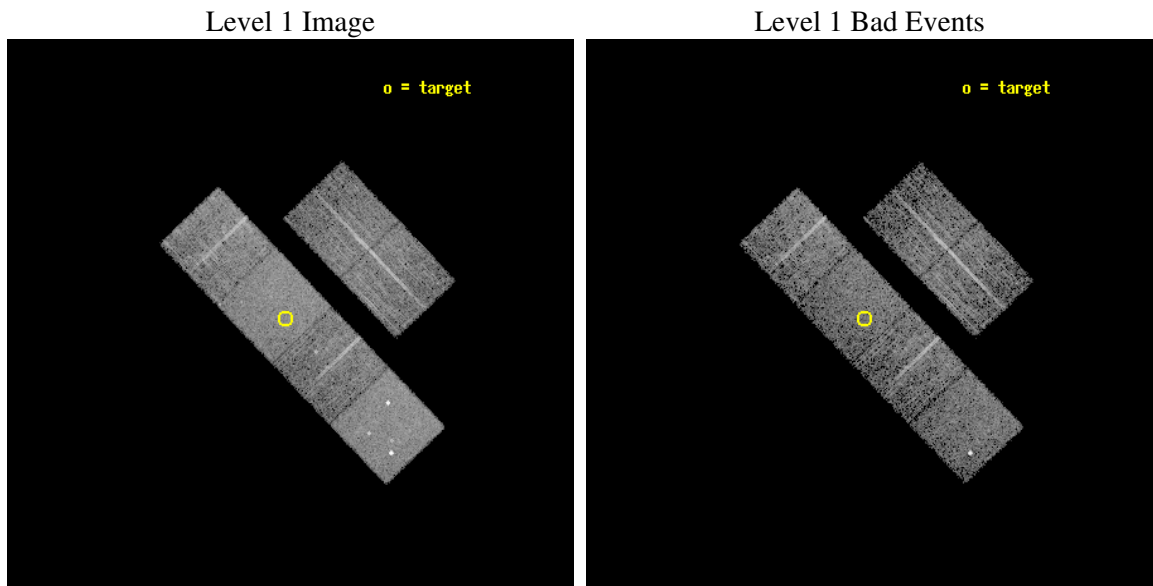
seq_num	900164
obs_id	3325
title	THE SHEEP SURVEY: WHAT KIND OF OBJECTS MAKE THE X-RAY BACKGROUND?
observer	Professor Kirpal Nandra
object	AX J1243.8+1305
dtcycle	0
cycle	P
ra_targ	190.958333
dec_targ	13.088139
ra_nom	190.9502466131
dec_nom	13.082366582298
roll_nom	226.25223390509
revision	2
ontime	4959.9999815226
livetime	4897.1934752031
ontime2	4959.9999815226
ontime3	4959.9999815226
ontime5	4959.9999815226
ontime6	4959.9999815226
ontime7	4959.9999815226
ontime8	4959.9999815226
l2events	50216



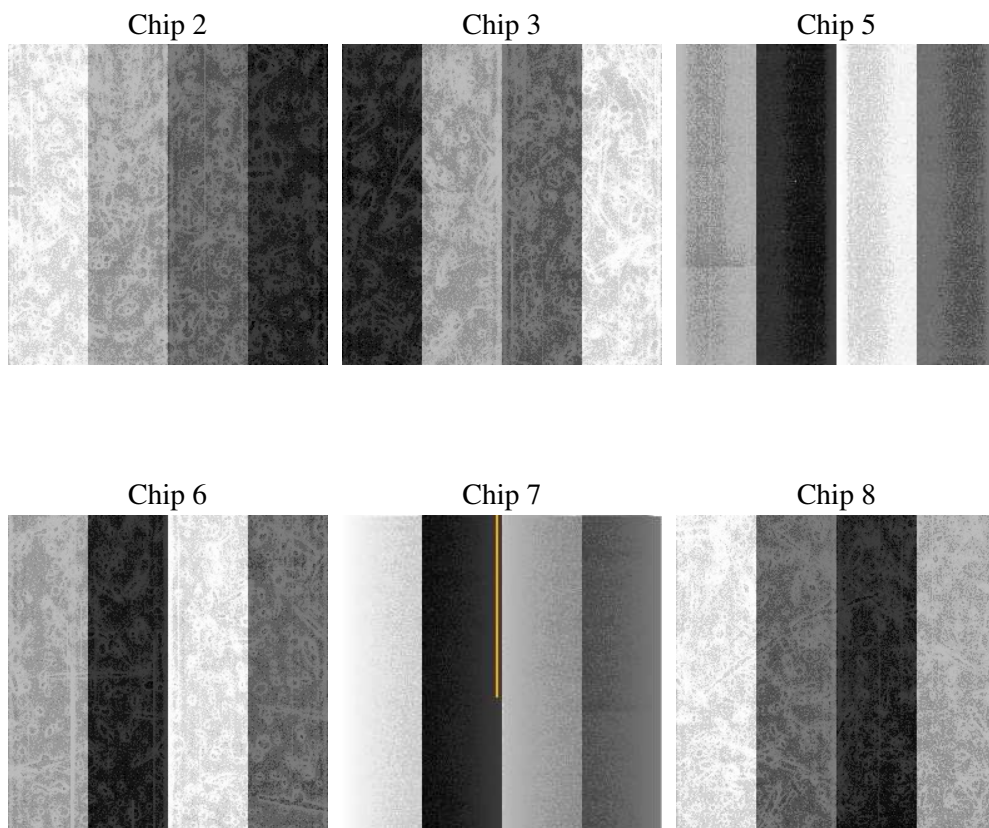
## 2 OBI

### 2.1 OBI

#### 2.1.1 Images



#### 2.1.2 Bias



### 2.1.3 Parameters

obi_num	0
ascdsver	7.6.9
caldsver	3.2.3
date	2006-09-15T00:04:11
revision	2

sched_exp_time	5000.000000
ontime	4965.2148325443
ontime2	4965.2148325443
ontime3	4965.2148325443
ontime5	4965.2148325443
ontime6	4965.2148325443
ontime7	4965.2148325443
ontime8	4965.2148325443
l1events	236528

### 2.1.4 Events

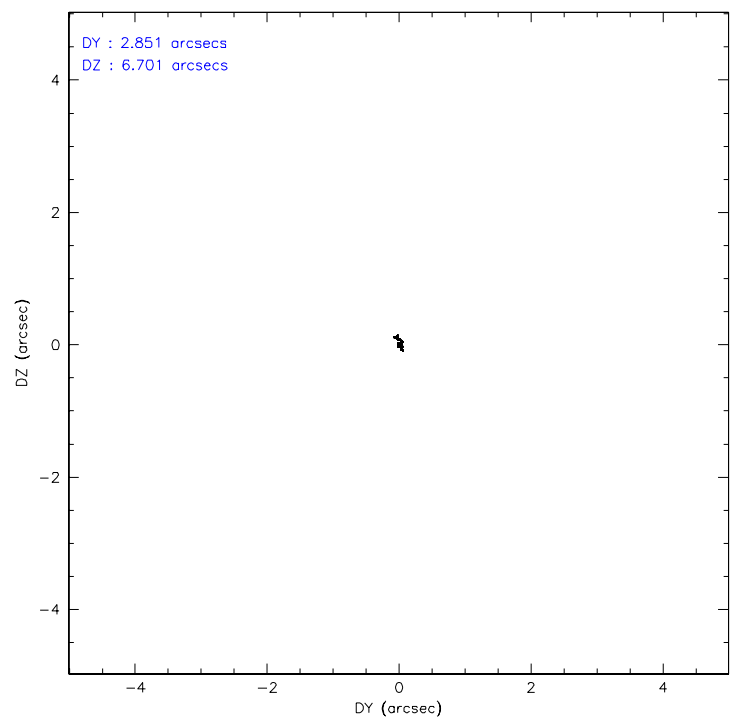
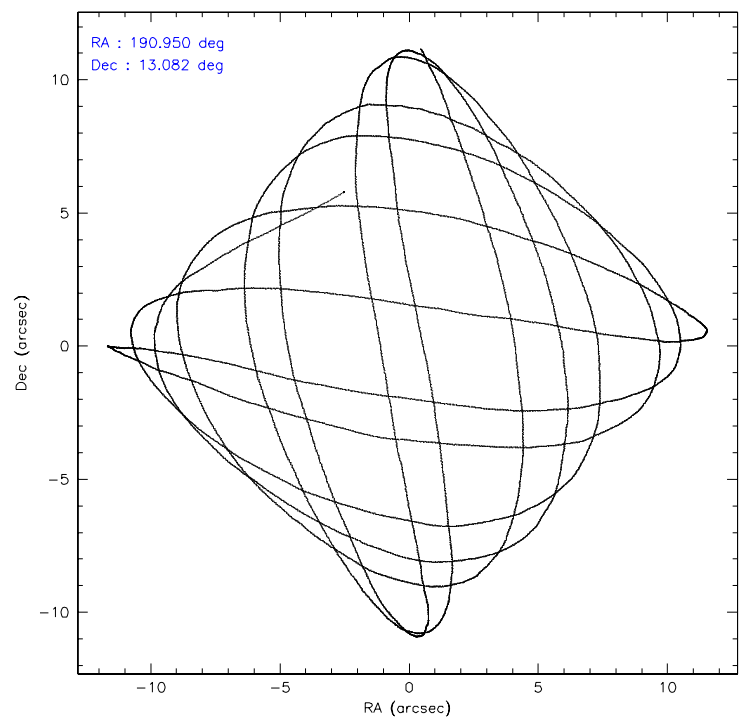
	ccd 2	ccd 3	ccd 5	ccd 6	ccd 7	ccd 8
level 1 events	35435	31854	49578	32725	44418	42518
rejected events	31541	28100	27232	28857	27027	34003
rejected %	89%	88%	54%	88%	60%	79%

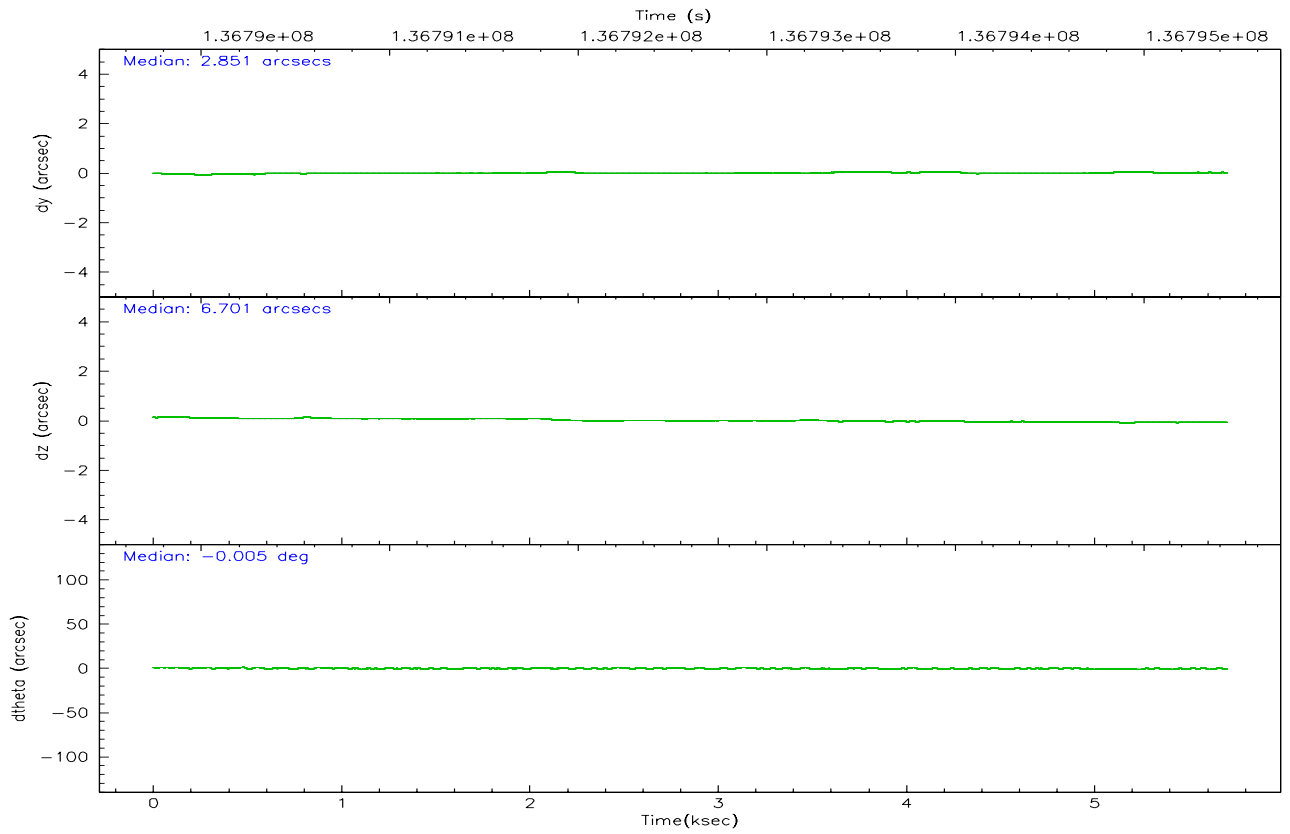
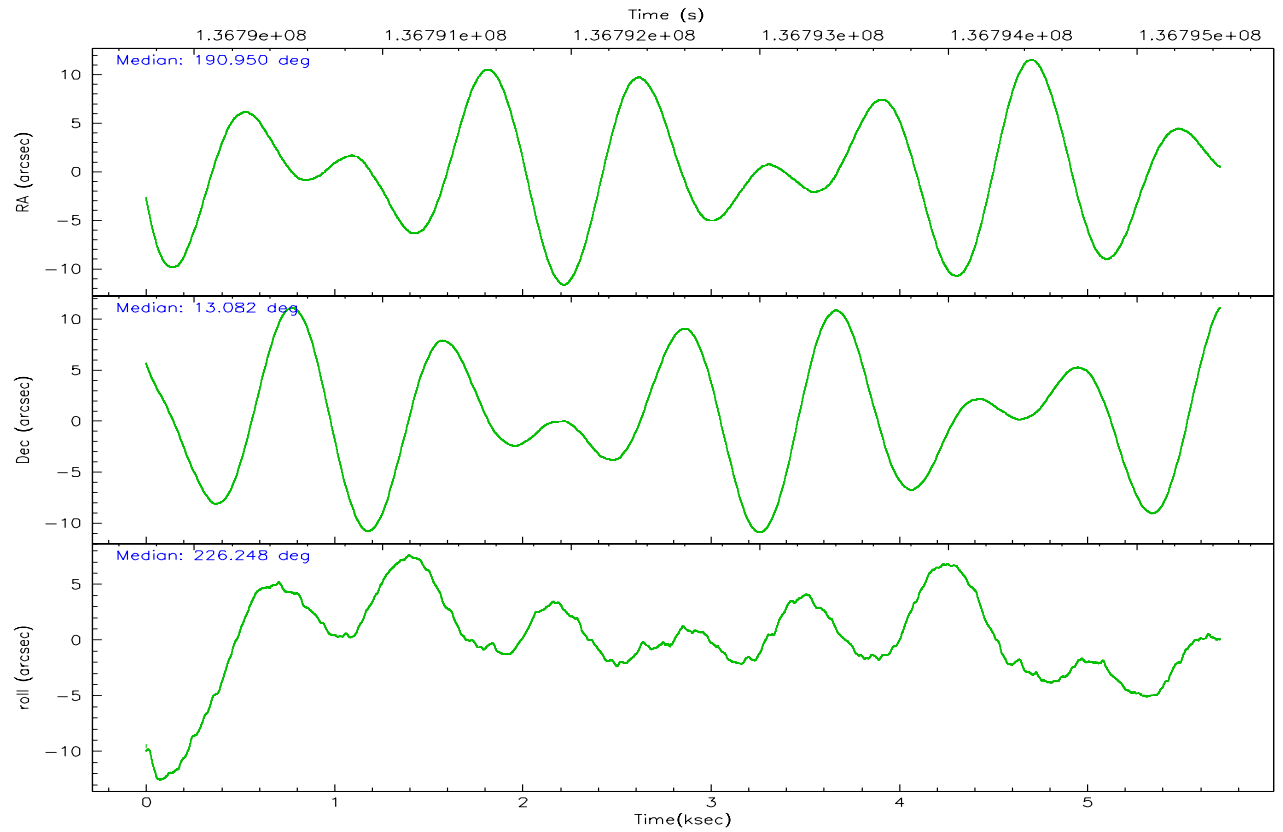
	ccd 2	ccd 3	ccd 5	ccd 6	ccd 7	ccd 8
grade 0 events	1666	1640	2909	1690	1212	2626
	4%	5%	5%	5%	2%	6%
grade 1 events	17	14	32	24	25	29
	0%	0%	0%	0%	0%	0%
grade 2 events	858	749	6667	743	4360	1809
	2%	2%	13%	2%	9%	4%
grade 3 events	341	344	528	332	959	916
	0%	1%	1%	1%	2%	2%
grade 4 events	342	374	464	355	886	834
	0%	1%	0%	1%	1%	1%
grade 5 events	1188	1331	2406	1402	2874	1827
	3%	4%	4%	4%	6%	4%
grade 6 events	691	649	11814	754	9999	2332
	1%	2%	23%	2%	22%	5%
grade 7 events	30332	26753	24758	27425	24103	32145
	85%	83%	49%	83%	54%	75%

## 2.2 Compared Parameters

Parameter	Planned	Actual	Parameter	Planned	Actual
Instrument	ACIS	ACIS	Obspar format version number	6	6
Detector	ACIS-235678	ACIS-235678	Obspar file type	PREDICTED	ACTUAL
Grating	NONE	NONE	Obspar update status	NONE	UPDATED
Data mode	FAINT	FAINT	Number of optional ACIS chips dropped	0	0
Observation mode	POINTING	POINTING	On-chip summing requested	N	N
Pointing RA	190.956594	190.9502466130955	Subarray requested	NONE	NONE
Pointing Dec	13.108967	13.08236658229803	Alternating exposures requested	N	N
Pointing Roll	226.094171	226.2522339050872	Primary exposure time	0.000000	3.2
SIM focus pos (mm)	-0.684267	-0.6828225247311905			
SIM defocus (mm)	0	0.001444936568705701			
SIM translation stage pos (mm)	-190.132523	-190.1425803651734			
SIM translation stage offset (mm)	0	0.01005778216563158			
Observation start time	136790448.184000	136789231.53893			
Observation start date	2002-05-03T05:19:44	2002-05-03T05:00:31			
Observation end time	136795448.184000	136795864.8267			
Observation end date	2002-05-03T06:43:04	2002-05-03T06:51:04			
Read mode	TIMED	TIMED			

## 2.3 Aspect



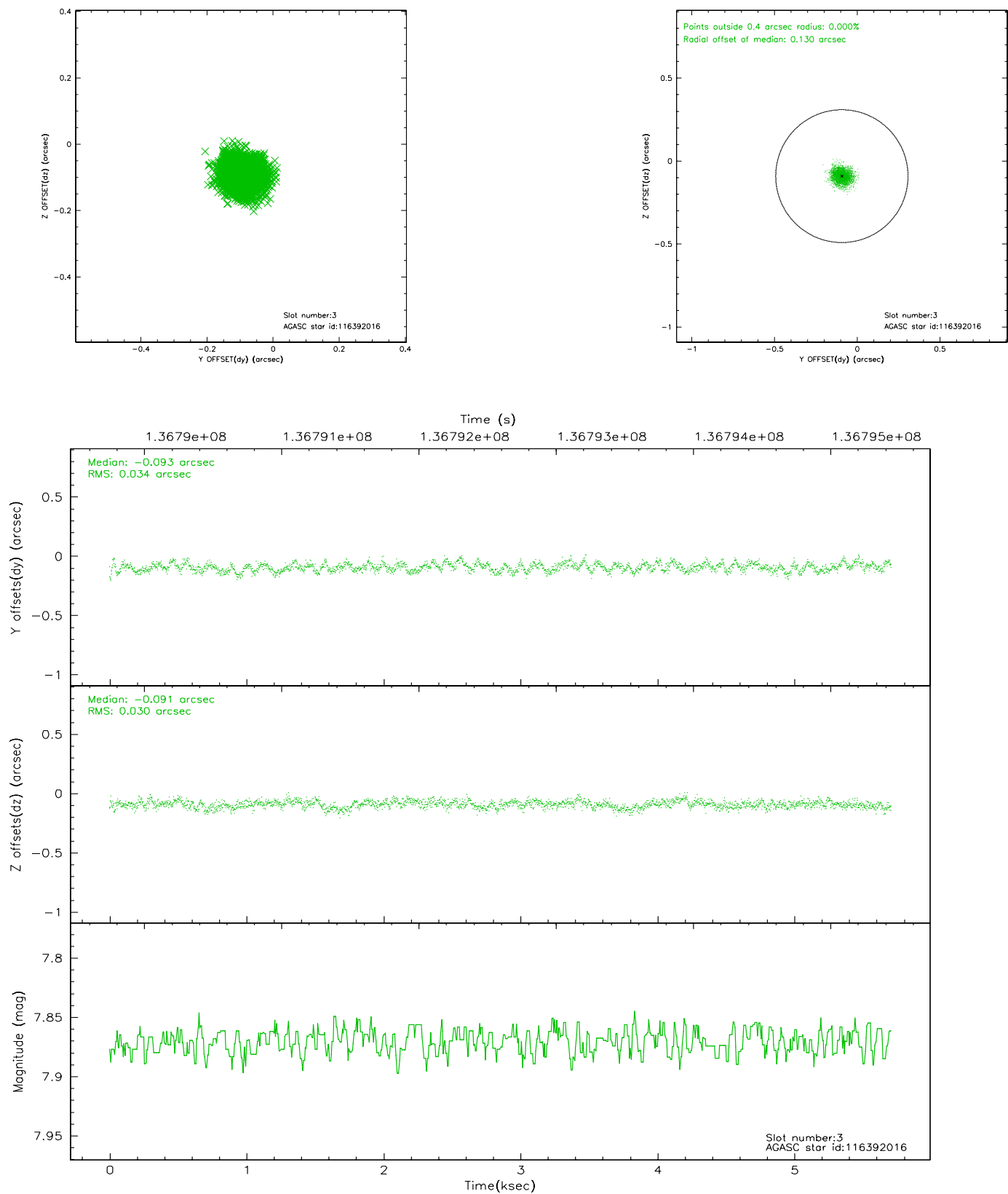


### Slot Statistics

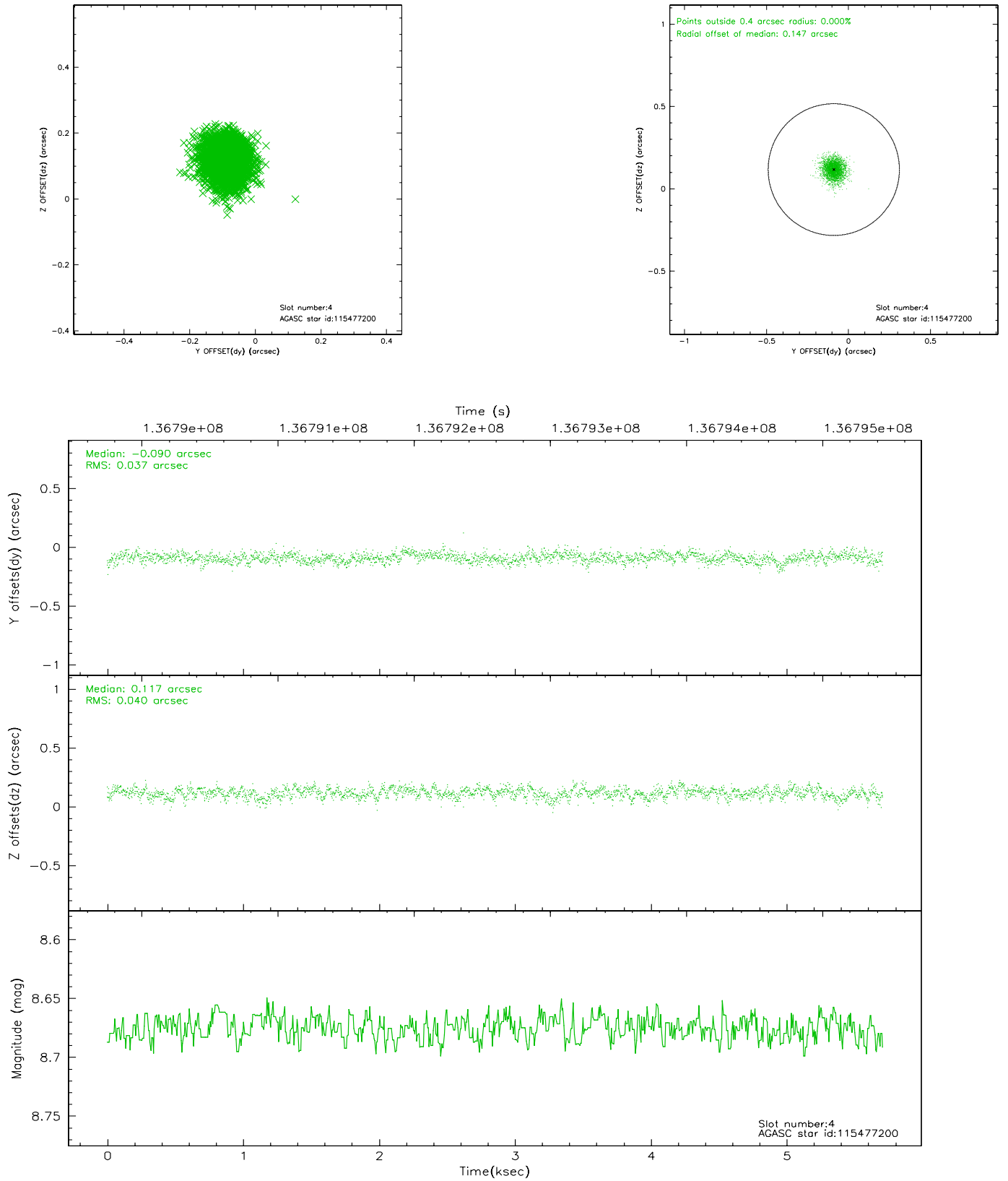
slot	status	id	mag	n_pts	med_dy	med_dz	dr1	dr2	ra	dec	mean_y	mean_z
0	FID	ACIS-S-2	7.11	1391	0.019	0.025	0.007	0.012	0.000000	0.000000	-755.45	-1727.81
1	FID	ACIS-S-4	7.20	1392	-0.043	-0.007	0.006	0.010	0.000000	0.000000	2157.27	179.59
2	FID	ACIS-S-6	7.35	1392	-0.004	-0.010	0.008	0.012	0.000000	0.000000	407.83	818.16
3	GUIDE	116392016	7.87	2785	-0.093	-0.091	0.049	0.077	191.651298	12.964012	-1316.60	2115.54
4	GUIDE	115477200	8.68	2784	-0.090	0.117	0.059	0.095	191.140191	13.348570	-1067.91	-133.96
5	GUIDE	115477424	9.23	2784	0.108	-0.078	0.074	0.124	190.783230	12.743104	1370.89	474.87
6	GUIDE	115477056	9.43	2783	0.013	0.028	0.079	0.128	191.137929	12.866912	186.95	1063.09
7	GUIDE	115084608	9.39	2779	0.062	0.026	0.110	0.179	190.766423	12.472453	2114.75	1108.02

## 2.4 Star Slots

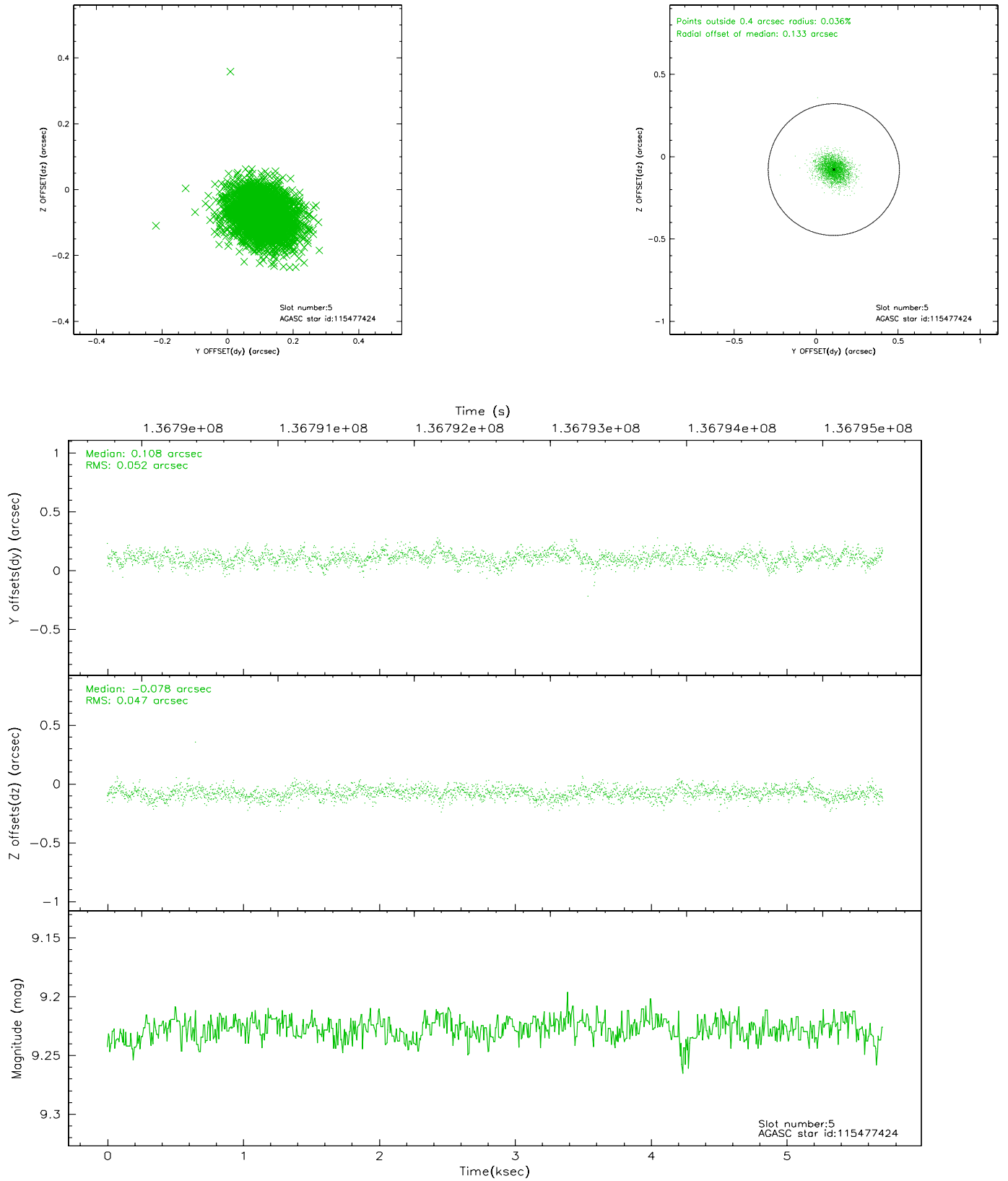
### 2.4.1 Slot 3



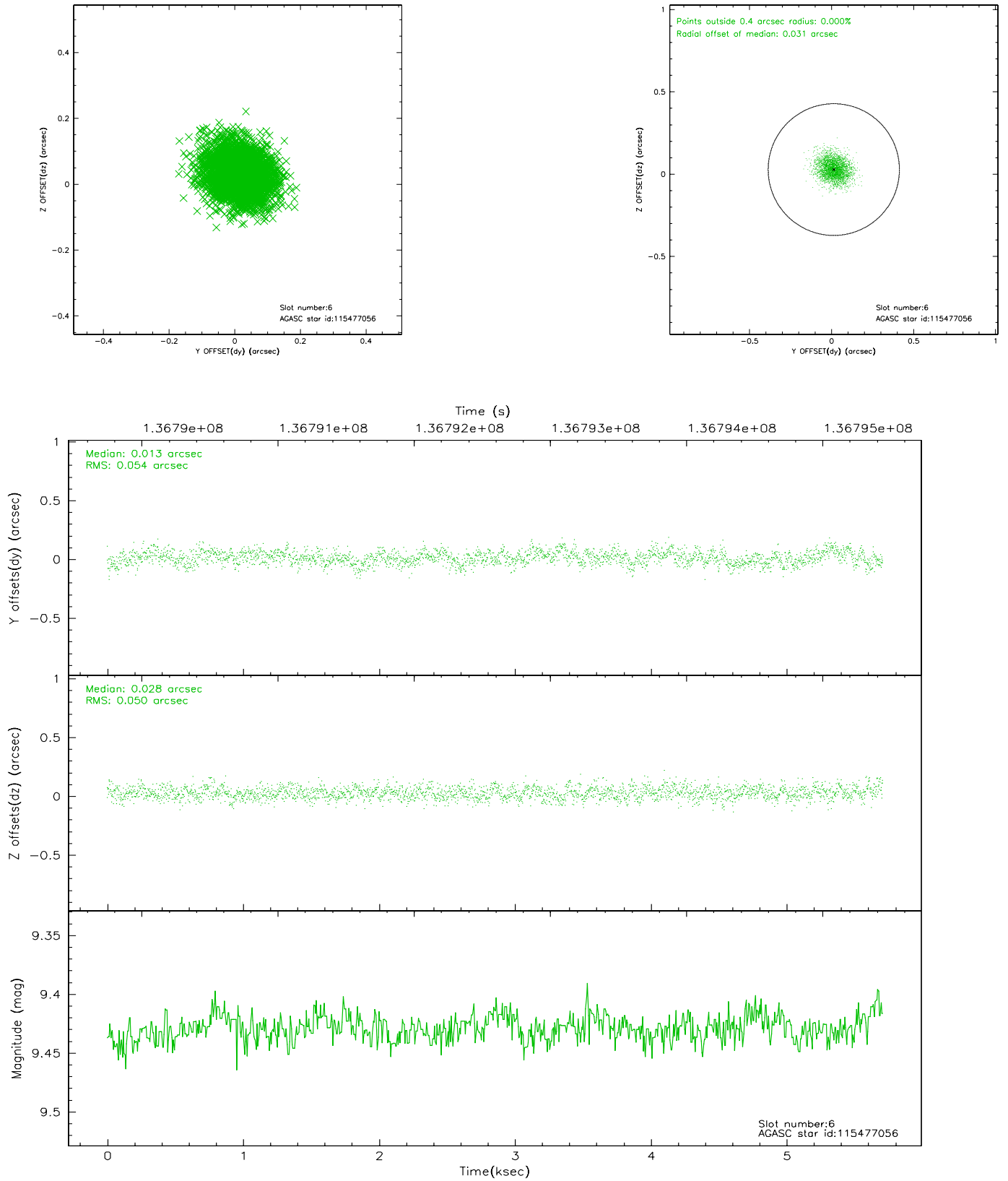
## 2.4.2 Slot 4



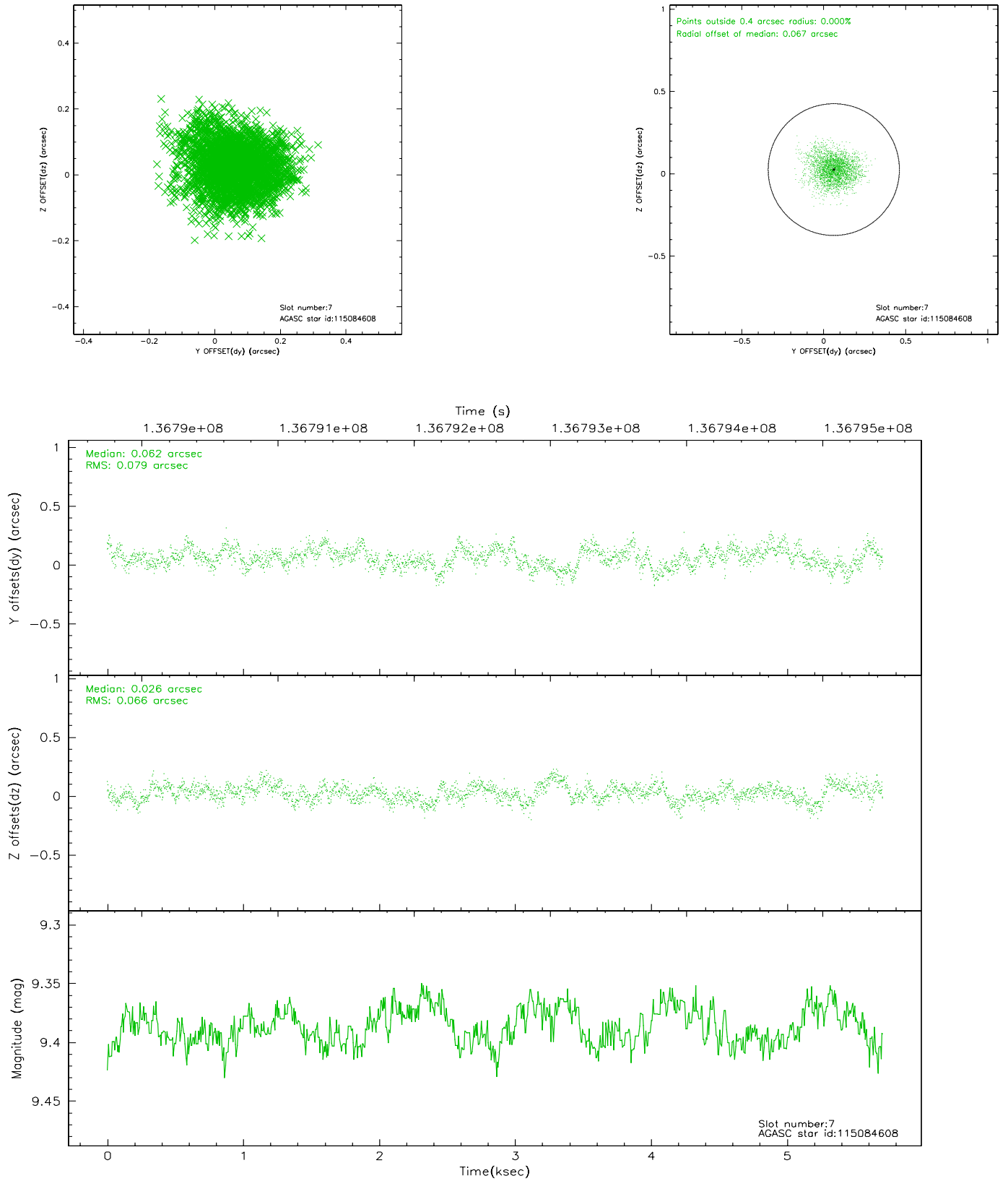
### 2.4.3 Slot 5



## 2.4.4 Slot 6

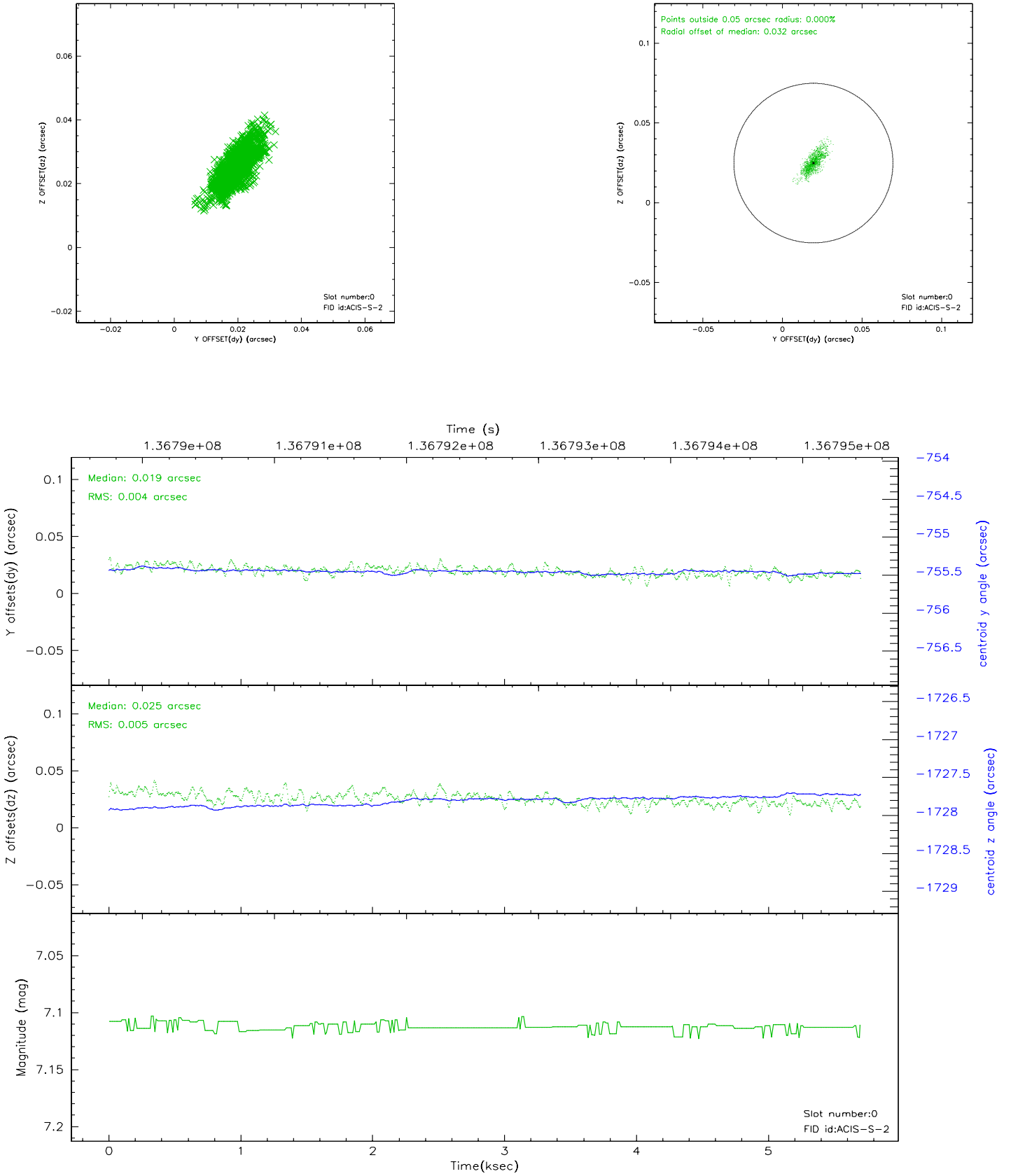


## 2.4.5 Slot 7

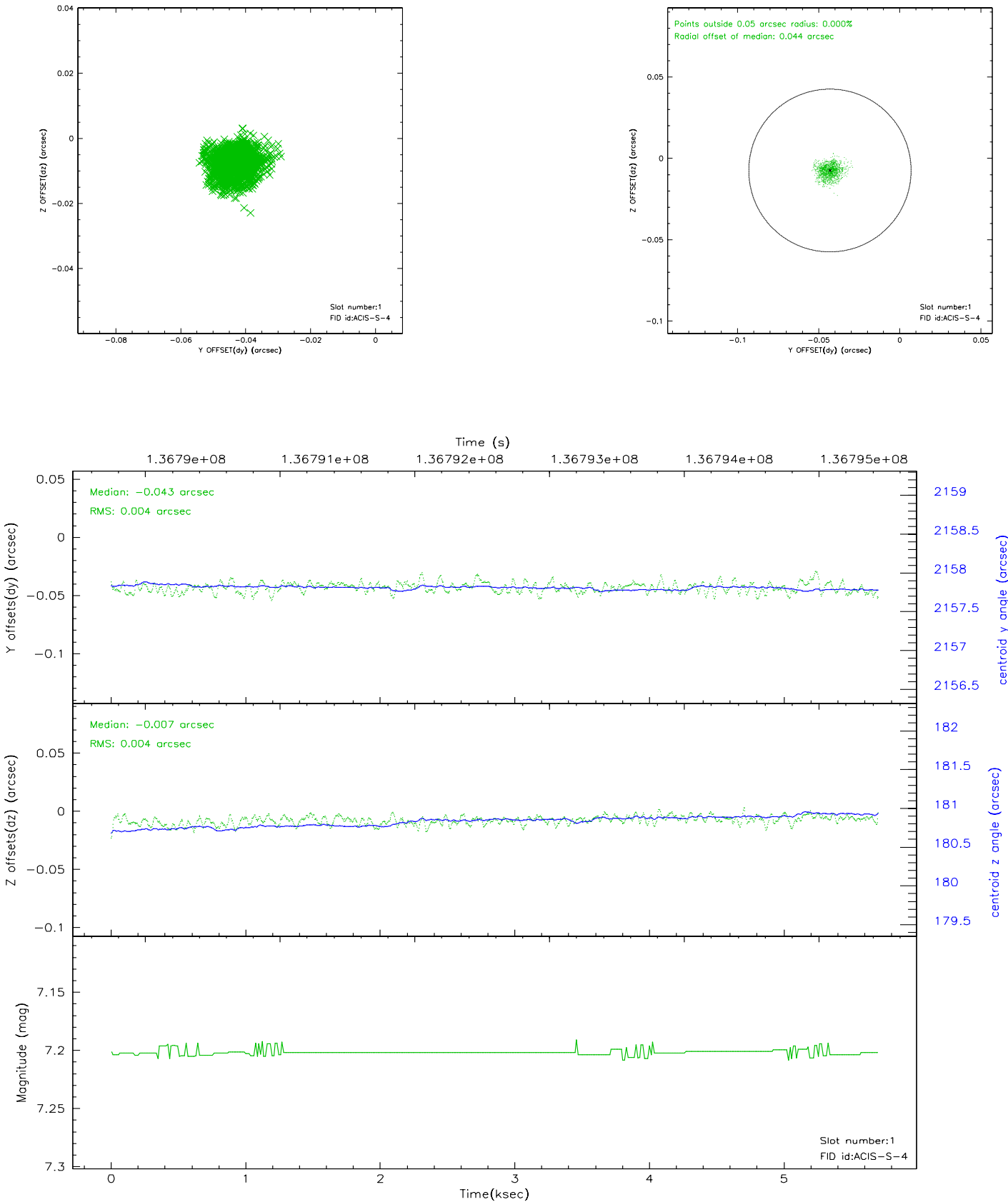


## 2.5 FID Slots

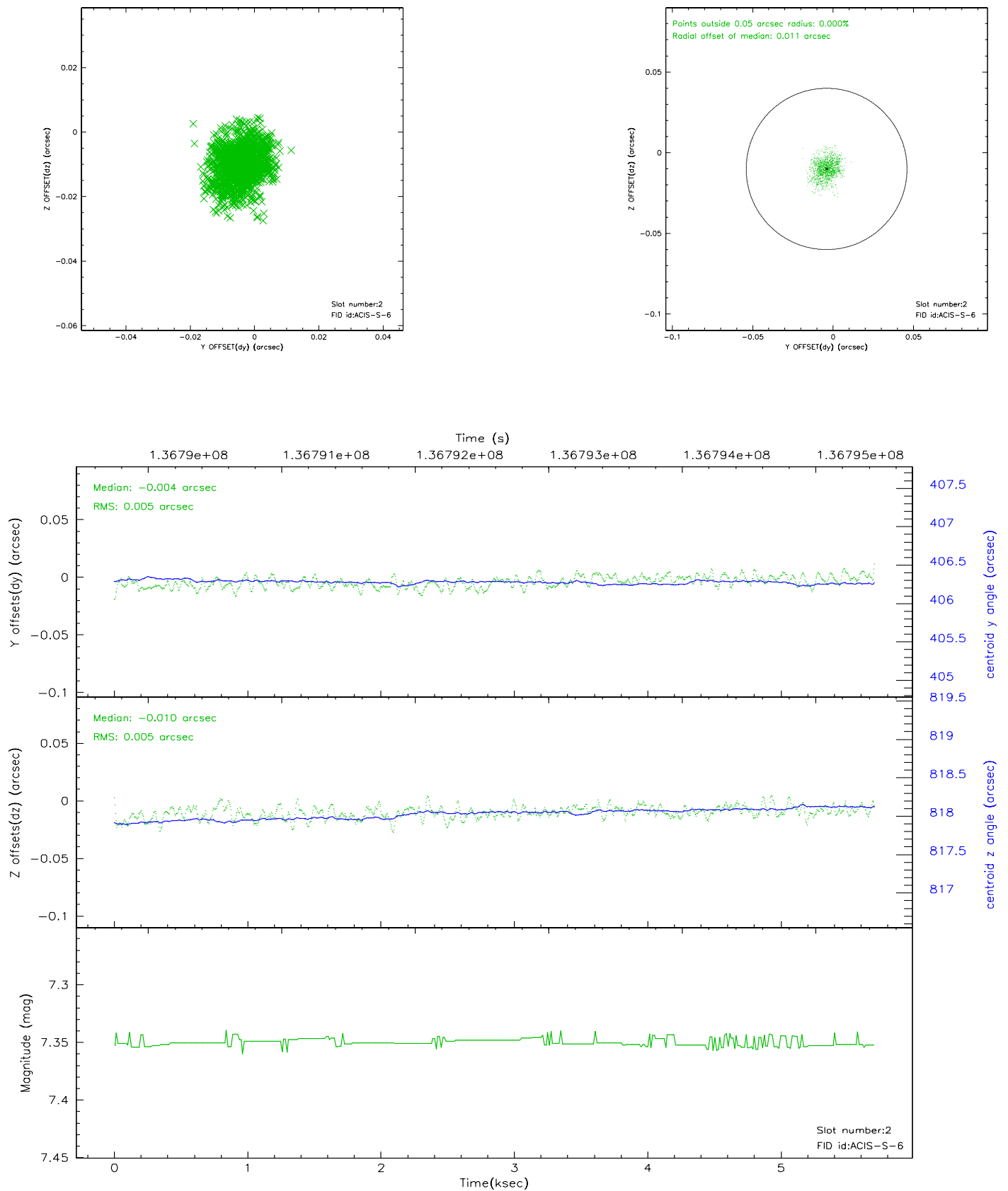
### 2.5.1 Slot 0



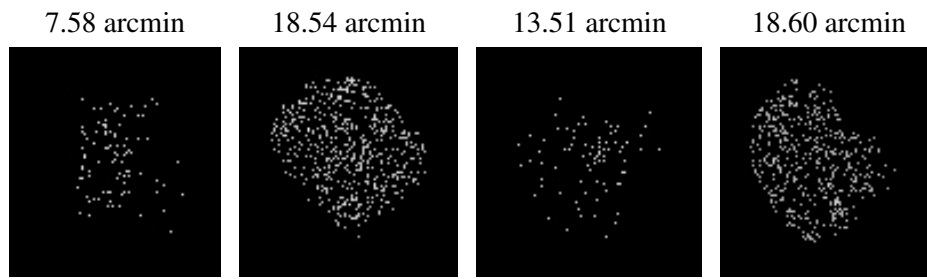
2.5.2 Slot 1



### 2.5.3 Slot 2



### 3 Point Sources



## A Summary

### A.1 Status

V&V Scientist	Doug Morgan
V&V Date (YYYY-MM-DD)	2006.09.17
V&V Edition	1
V&V Disposition and Status	OK
V&V Charge Time	4.963

### A.2 Comments