

V&V Reference Report

L2 ASCDS Version : 7.6.8.1

Observation 3319 - L2 Version 001
Chandra X-Ray Center

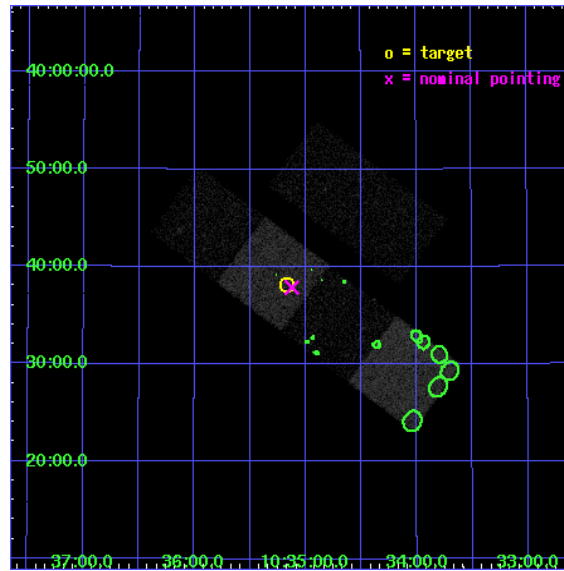
L2 Processing Date : Sep 8 2006

Contents

1	Front	2
2	OBI	3
2.1	OBI	3
2.1.1	Images	3
2.1.2	Bias	3
2.1.3	Parameters	4
2.1.4	Events	4
2.2	Compared Parameters	5
2.3	Aspect	6
2.4	Star Slots	9
2.4.1	Slot 3	9
2.4.2	Slot 4	10
2.4.3	Slot 5	11
2.4.4	Slot 6	12
2.4.5	Slot 7	13
2.5	FID Slots	14
2.5.1	Slot 0	14
2.5.2	Slot 1	15
2.5.3	Slot 2	16
3	Point Sources	17
A	Summary	18
A.1	Status	18
A.2	Comments	18

1 Front

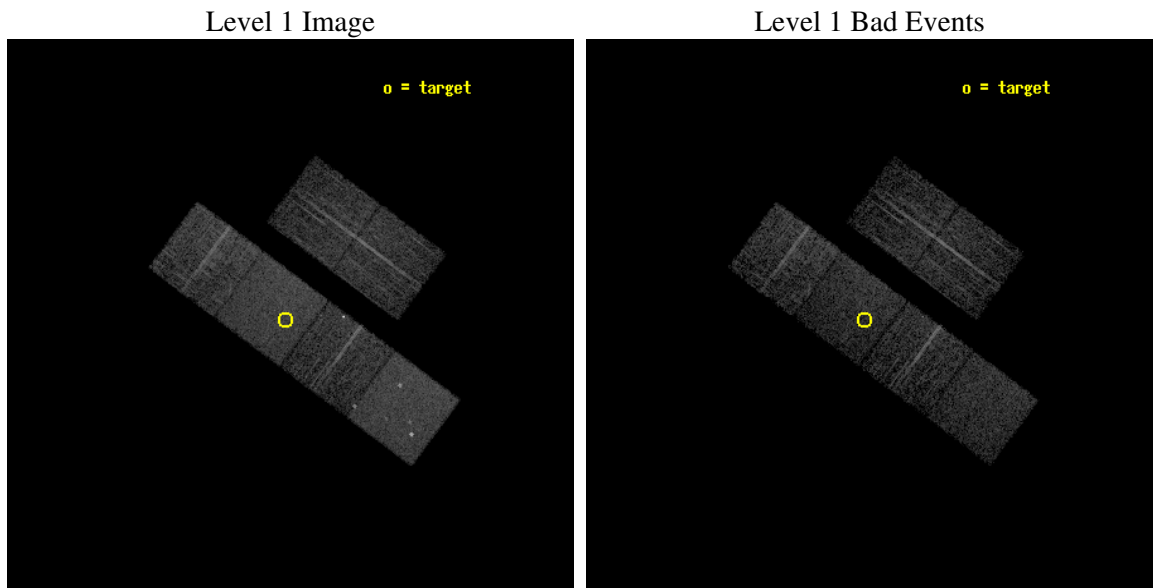
seq_num	900158
obs_id	3319
title	THE SHEEP SURVEY: WHAT KIND OF OBJECTS MAKE THE X-RAY BACKGROUND?
observer	Professor Kirpal Nandra
object	AX J1035.1+3938
dtcycle	0
cycle	P
ra_targ	158.792083
dec_targ	39.635833
ra_nom	158.78080407005
dec_nom	39.631386134746
roll_nom	216.66090291953
revision	2
ontime	5120.0000047684
livetime	5055.1674818141
ontime2	5120.0000047684
ontime3	5120.0000047684
ontime5	5120.0000047684
ontime6	5120.0000047684
ontime7	5120.0000047684
ontime8	5120.0000047684
l2events	49198



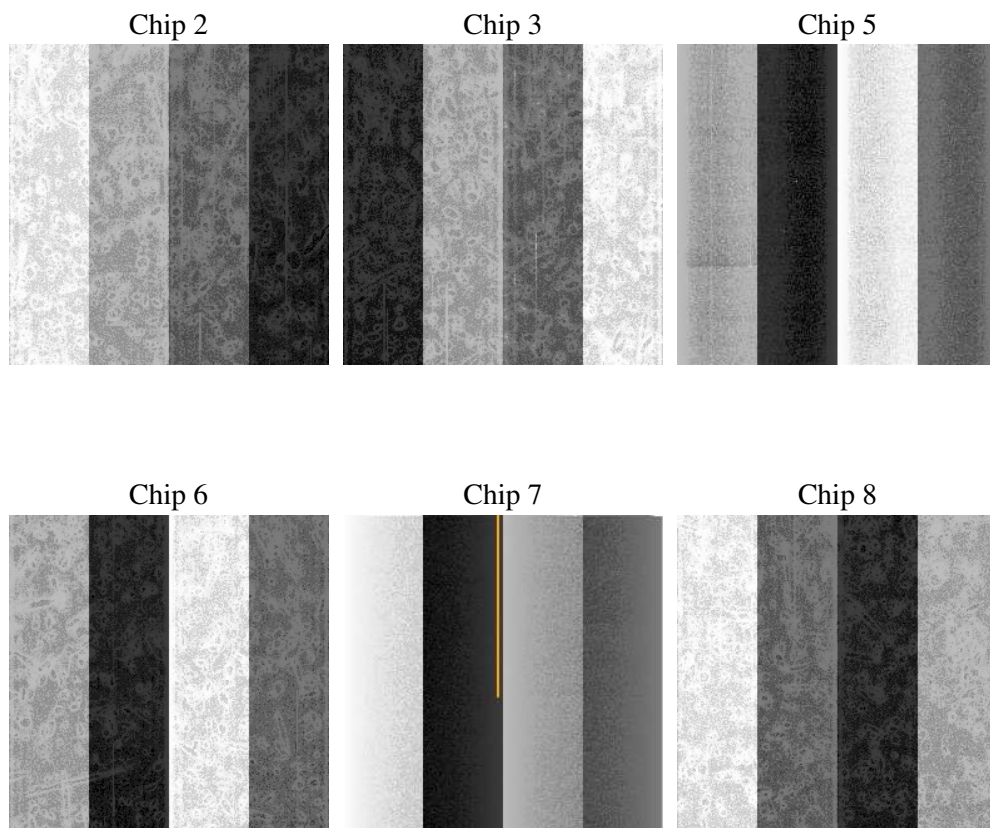
2 OBI

2.1 OBI

2.1.1 Images



2.1.2 Bias



2.1.3 Parameters

obi_num	0
ascdsver	7.6.8.1
caldsver	3.2.3
date	2006-09-08T10:47:27
revision	2

sched_exp_time	5000.000000
ontime	5198.5743408352
ontime2	5198.5743408352
ontime3	5198.5743408352
ontime5	5198.5743408352
ontime6	5198.5743408352
ontime7	5198.5743408352
ontime8	5198.5743408352
l1events	223823

2.1.4 Events

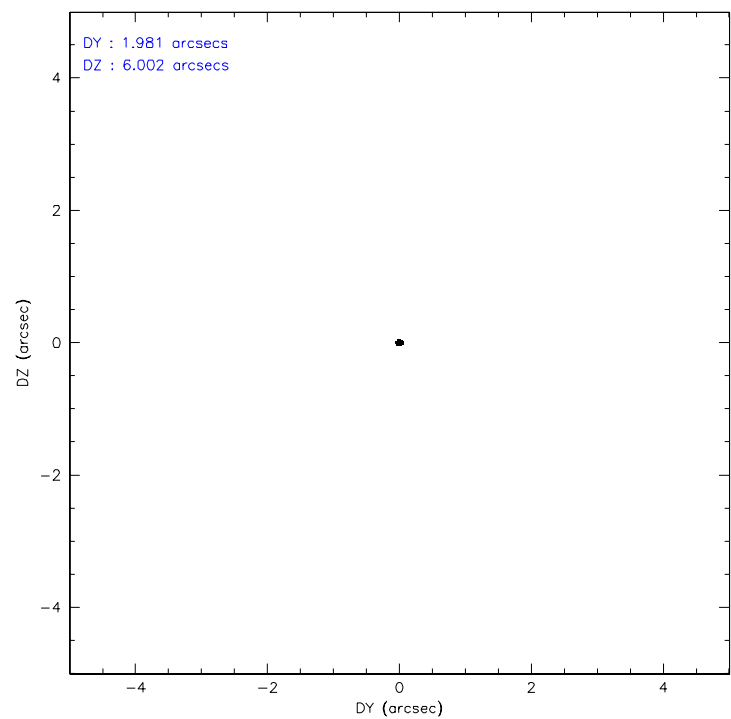
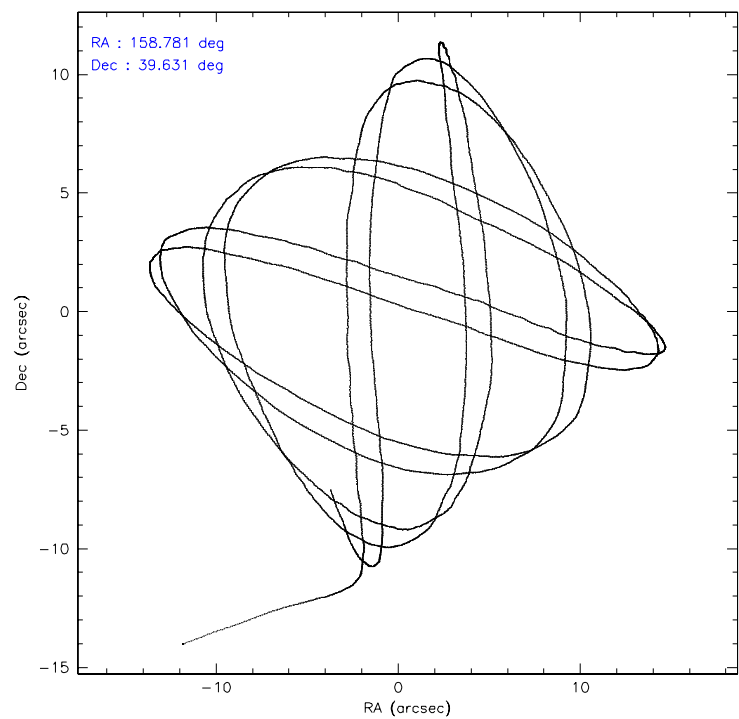
	ccd 2	ccd 3	ccd 5	ccd 6	ccd 7	ccd 8
level 1 events	31871	30095	46596	33528	41712	40021
rejected events	28332	26605	25460	27288	25883	32320
rejected %	88%	88%	54%	81%	62%	80%

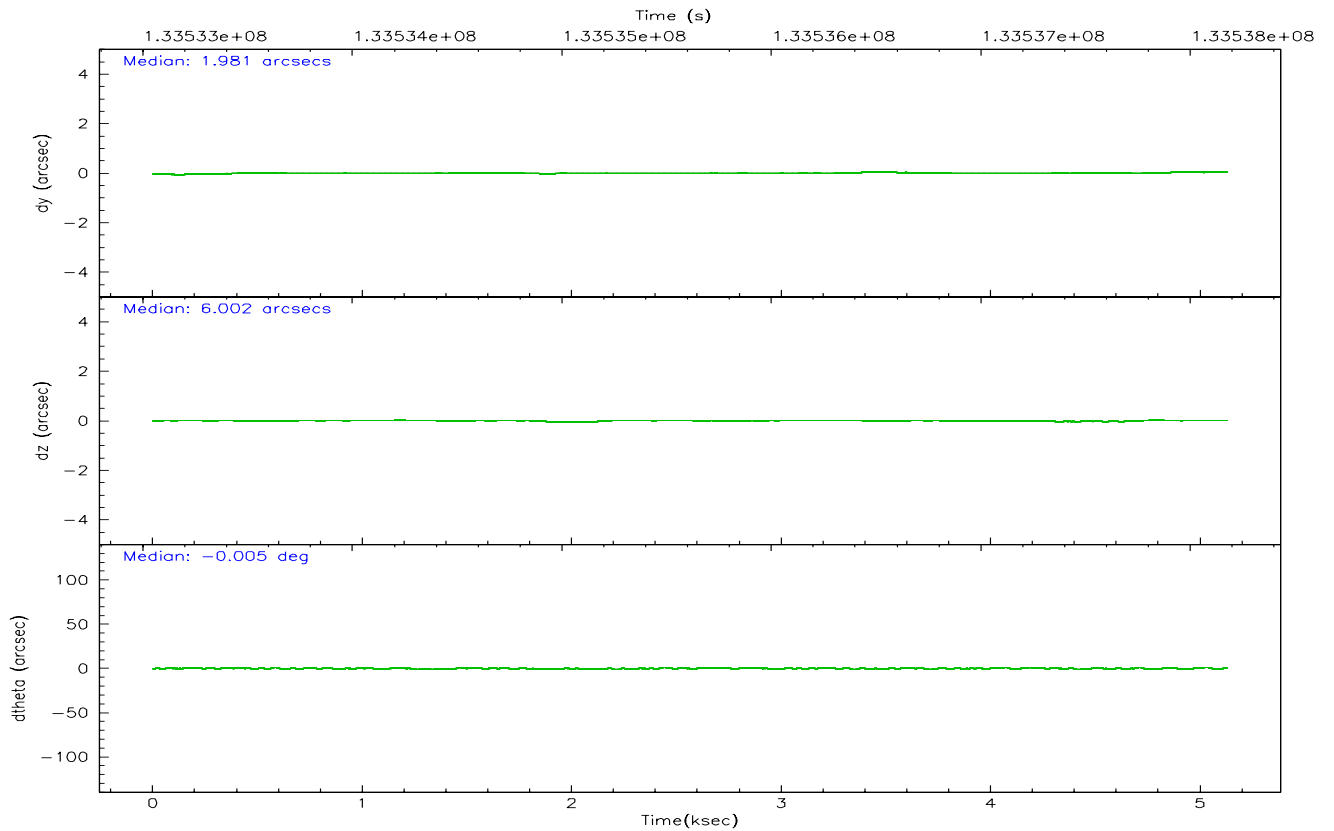
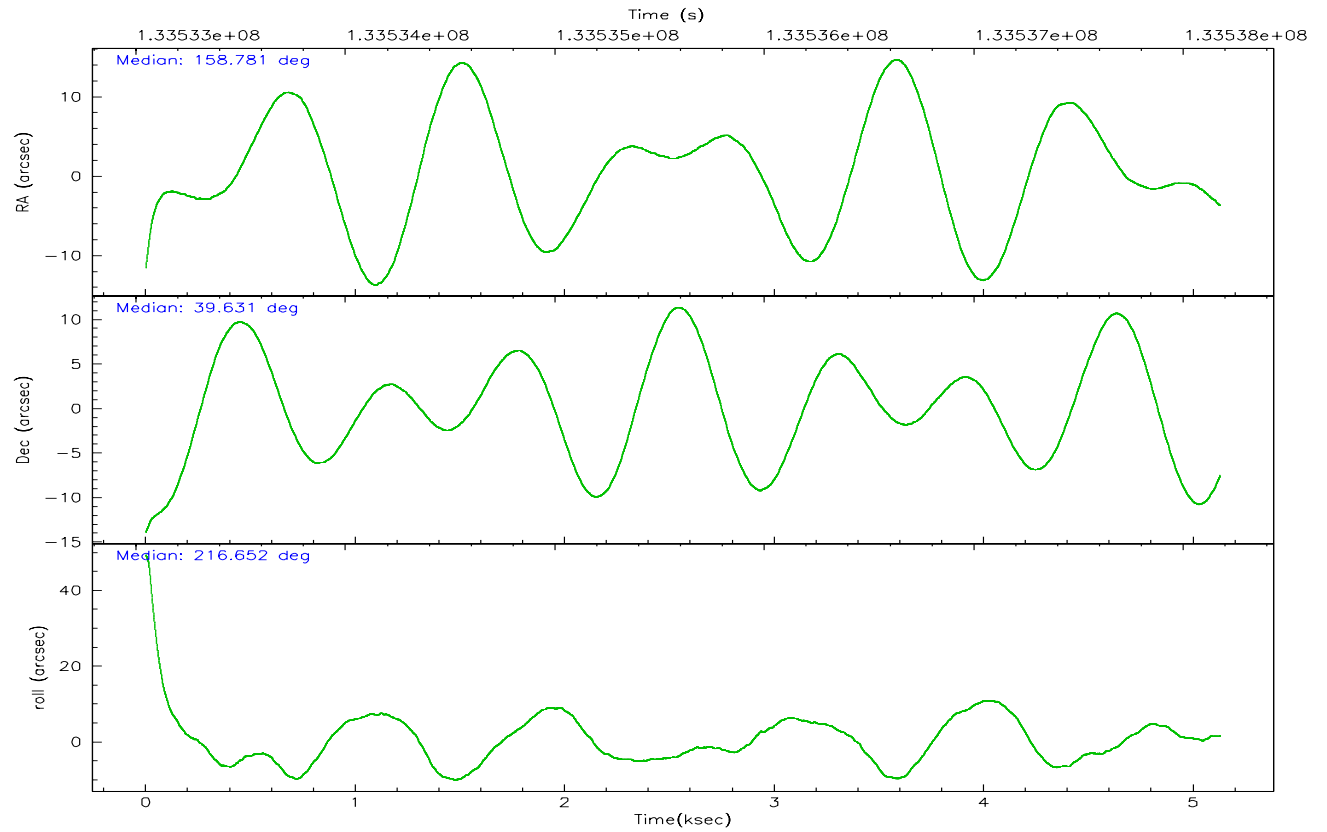
	ccd 2	ccd 3	ccd 5	ccd 6	ccd 7	ccd 8
grade 0 events	1548	1530	2527	3853	1025	2486
	4%	5%	5%	11%	2%	6%
grade 1 events	14	15	84	80	24	19
	0%	0%	0%	0%	0%	0%
grade 2 events	750	705	6661	948	3998	1779
	2%	2%	14%	2%	9%	4%
grade 3 events	324	331	443	428	849	748
	1%	1%	0%	1%	2%	1%
grade 4 events	337	356	445	397	784	655
	1%	1%	0%	1%	1%	1%
grade 5 events	1167	1303	2237	1373	2765	1747
	3%	4%	4%	4%	6%	4%
grade 6 events	643	636	11418	706	9418	2115
	2%	2%	24%	2%	22%	5%
grade 7 events	27088	25219	22781	25743	22849	30472
	84%	83%	48%	76%	54%	76%

2.2 Compared Parameters

Parameter	Planned	Actual	Parameter	Planned	Actual
Instrument	ACIS	ACIS	Obspar format version number	6	6
Detector	ACIS-235678	ACIS-235678	Obspar file type	PREDICTED	ACTUAL
Grating	NONE	NONE	Obspar update status	NONE	UPDATED
Data mode	FAINT	FAINT	On-chip summing requested	N	N
Observation mode	POINTING	POINTING	Subarray requested	NONE	NONE
Pointing RA	158.794425	158.7808040700536	Alternating exposures requested	N	N
Pointing Dec	39.656648	39.63138613474639	Primary exposure time	0.000000	3.2
Pointing Roll	216.495489	216.6609029195318			
SIM focus pos (mm)	-0.684267	-0.6828225247311905			
SIM defocus (mm)	0	0.001444936568705701			
SIM translation stage pos (mm)	-190.132523	-190.1400660498719			
SIM translation stage offset (mm)	0	0.00754346686406393			
Observation start time	133533178.184000	133532101.20651			
Observation start date	2002-03-26T12:31:54	2002-03-26T12:15:01			
Observation end time	133538178.184000	133538727.83178			
Observation end date	2002-03-26T13:55:14	2002-03-26T14:05:27			
Read mode	TIMED	TIMED			

2.3 Aspect



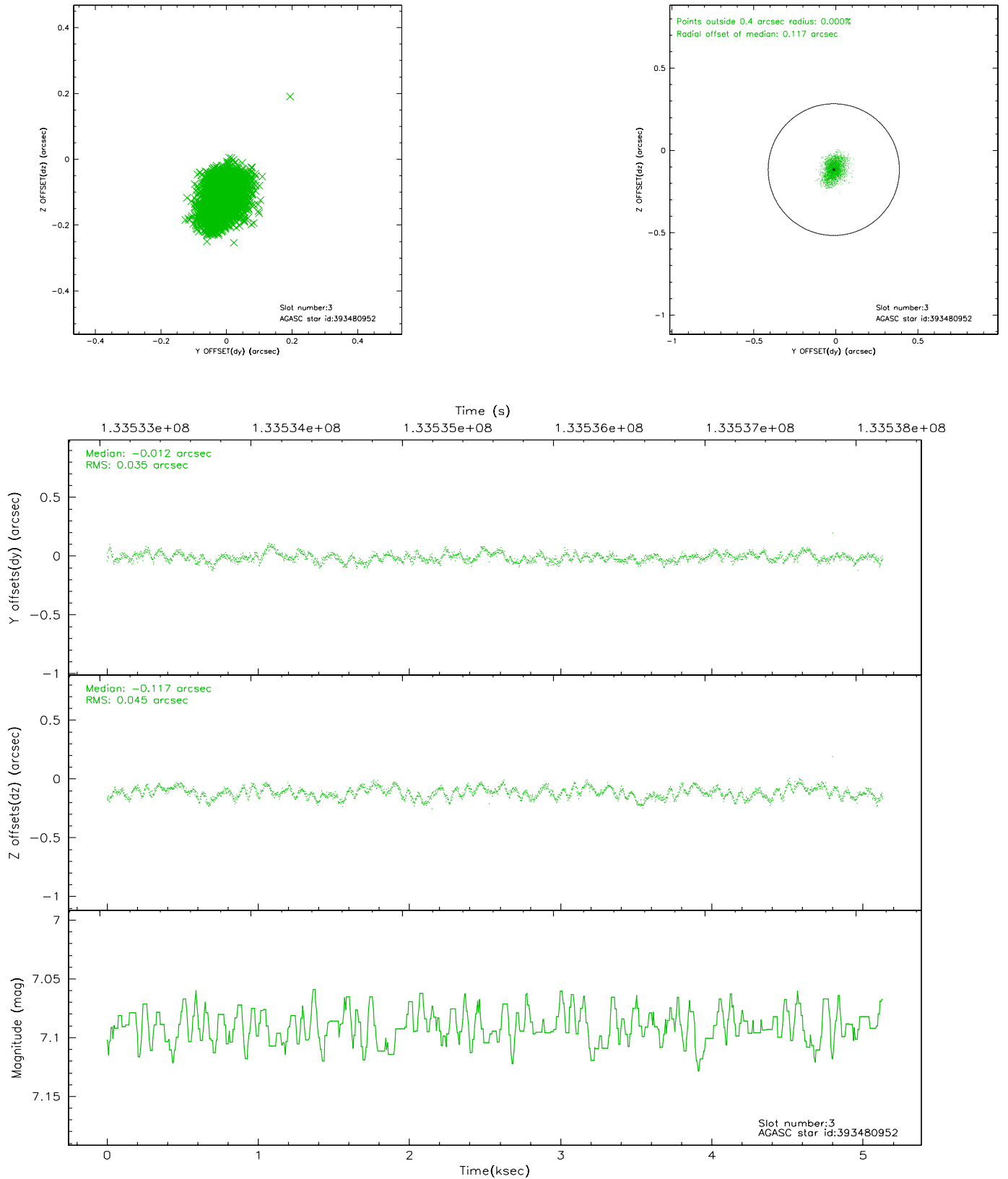


Slot Statistics

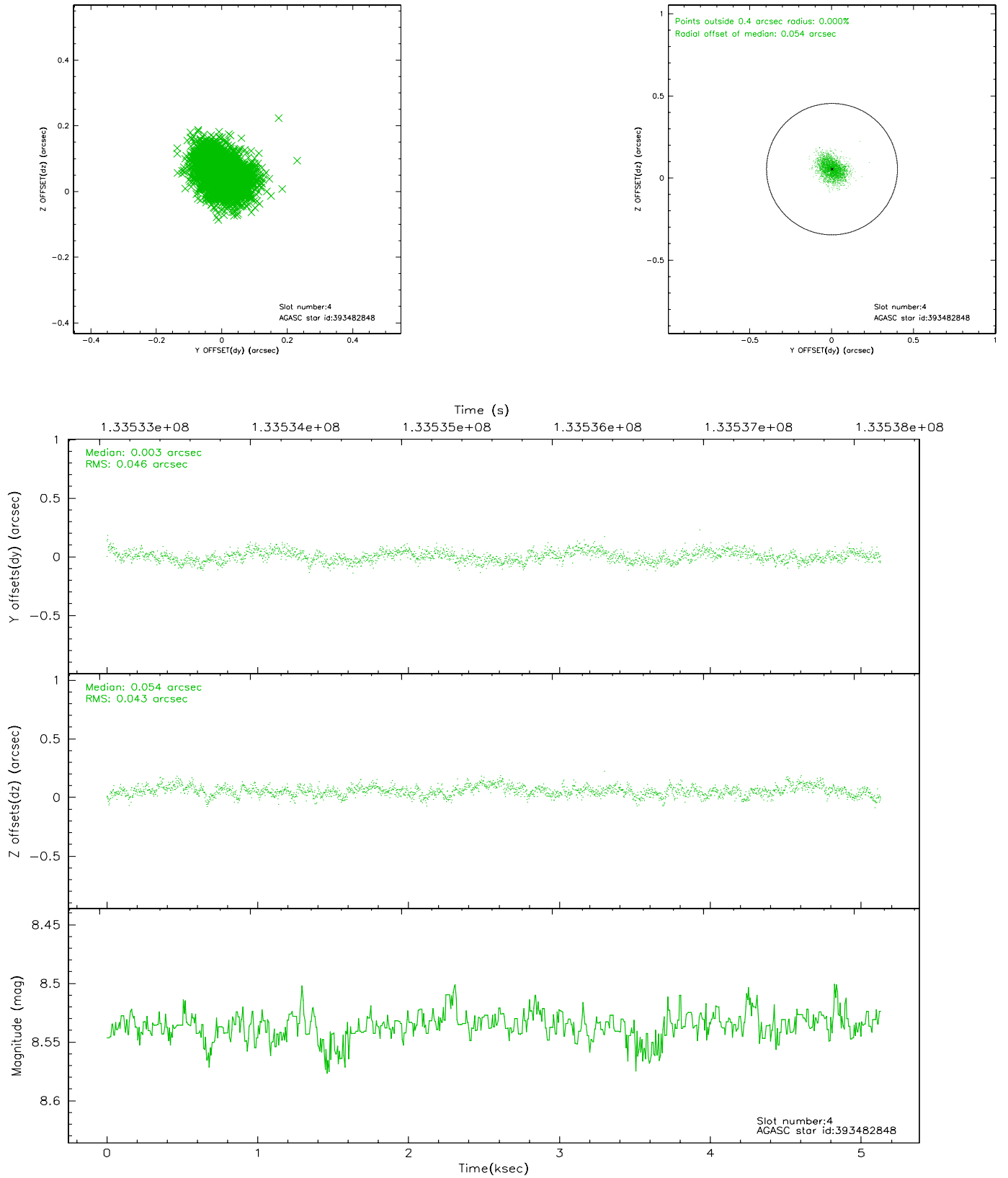
slot	status	id	mag	n_pts	med_dy	med_dz	dr1	dr2	ra	dec	mean_y	mean_z
0	FID	ACIS-S-2	7.11	1251	-0.037	0.029	0.006	0.010	0.000000	0.000000	-754.59	-1727.13
1	FID	ACIS-S-4	7.21	1251	-0.058	0.010	0.005	0.009	0.000000	0.000000	2158.09	180.19
2	FID	ACIS-S-5	7.24	1250	0.064	-0.030	0.006	0.010	0.000000	0.000000	-1805.85	175.07
3	GUIDE	393480952	7.09	2503	-0.012	-0.117	0.061	0.098	158.287108	39.221562	2066.21	414.33
4	GUIDE	393482848	8.54	2503	0.003	0.054	0.068	0.108	158.133503	39.603611	1583.89	-942.18
5	GUIDE	393484920	10.27	2498	0.163	-0.008	0.157	0.245	158.498802	39.317355	1387.95	490.60
6	GUIDE	393484632	9.91	2502	-0.163	0.029	0.136	0.220	159.890130	39.591900	-2316.28	1979.88
7	GUIDE	393478472	10.04	2429	0.011	0.048	0.107	0.175	158.740541	39.895284	-392.50	-778.60

2.4 Star Slots

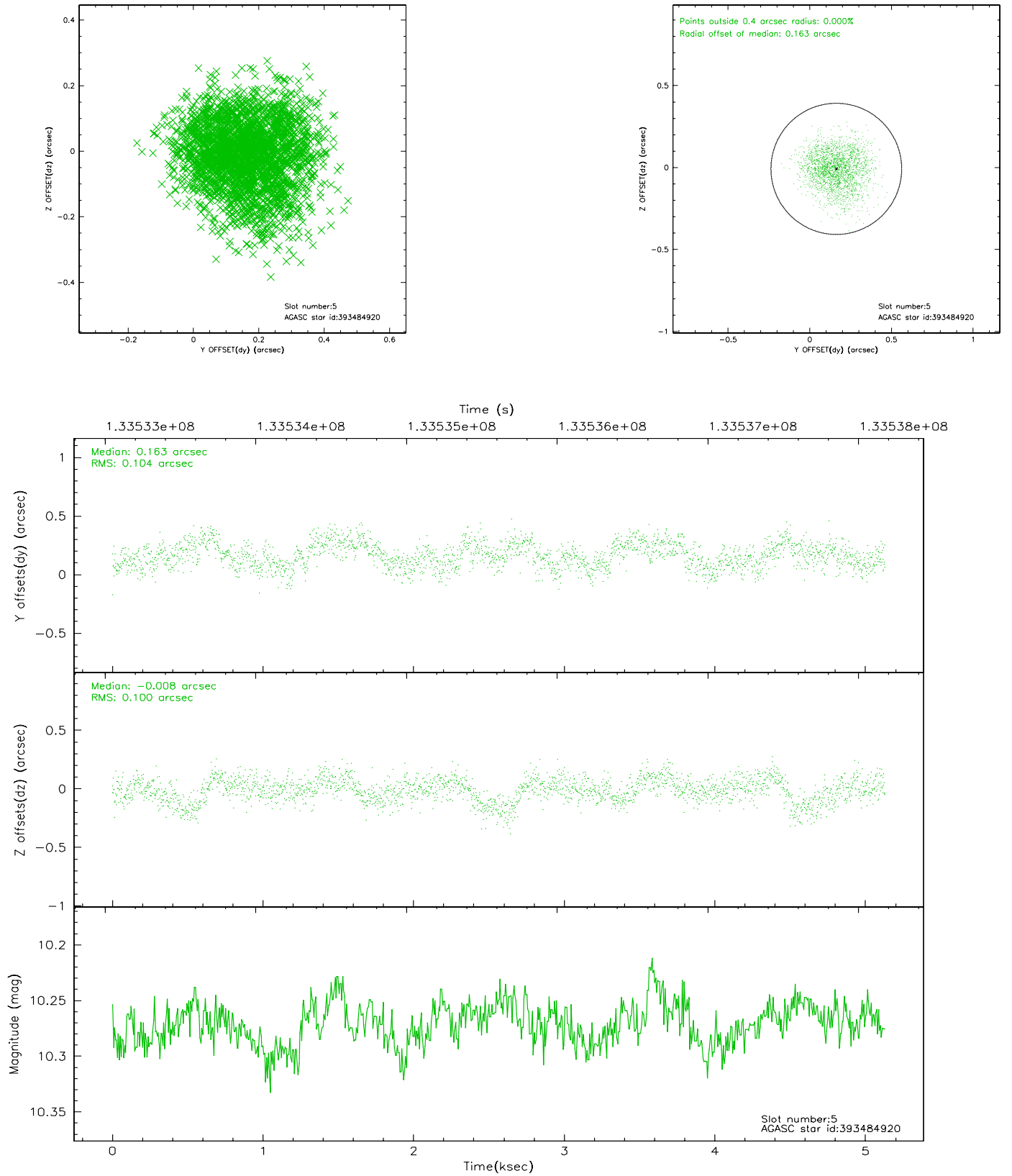
2.4.1 Slot 3



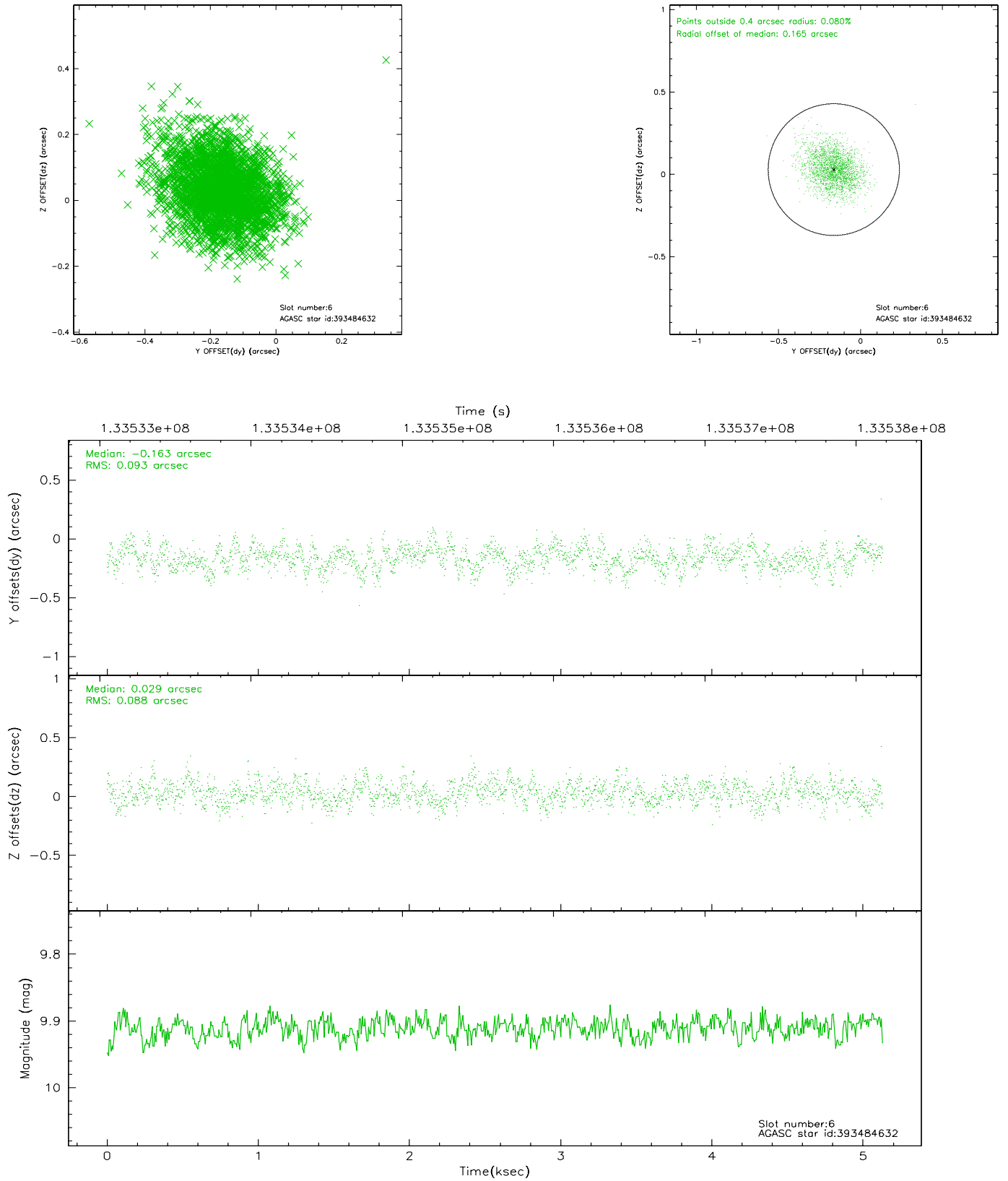
2.4.2 Slot 4



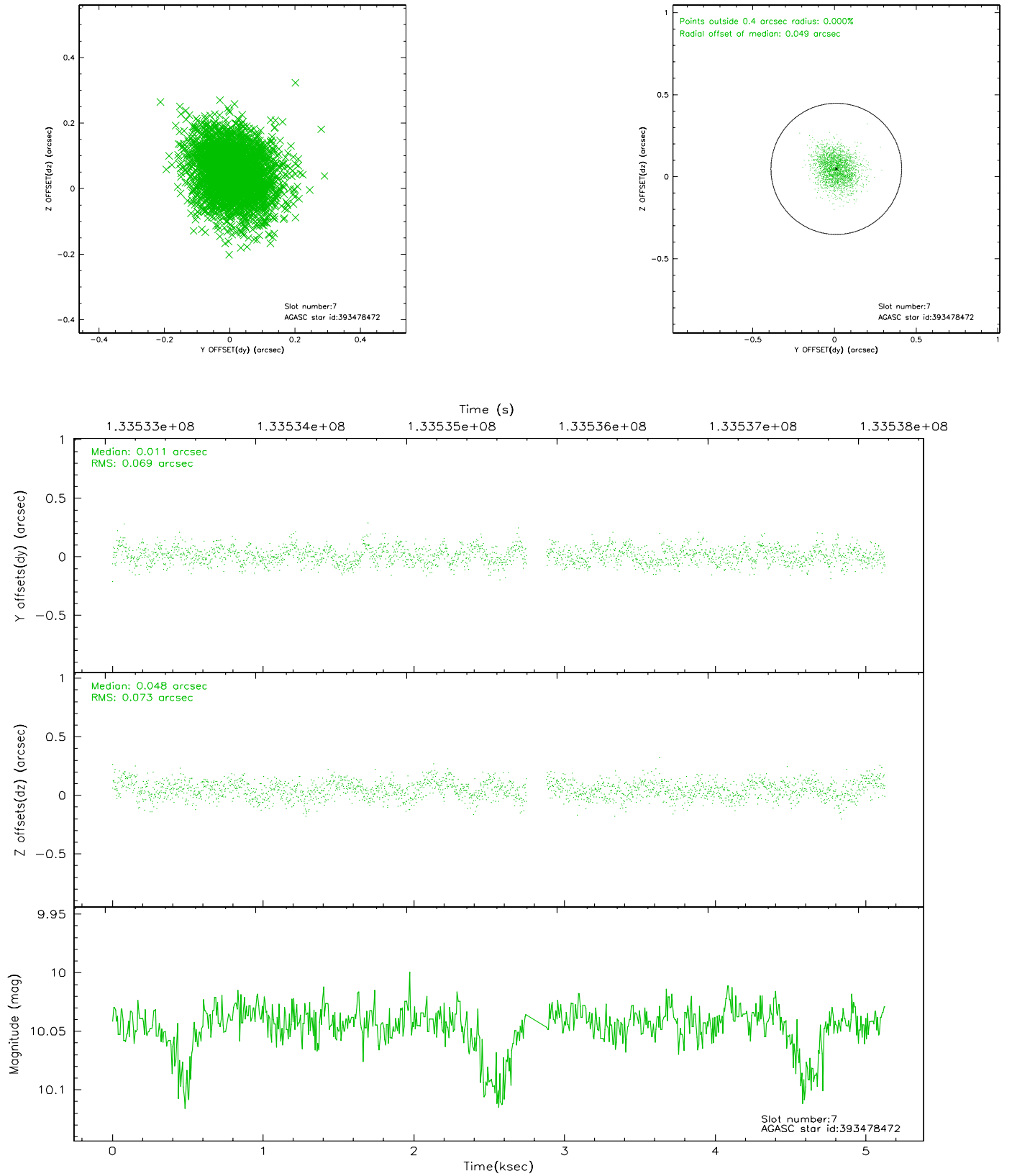
2.4.3 Slot 5



2.4.4 Slot 6

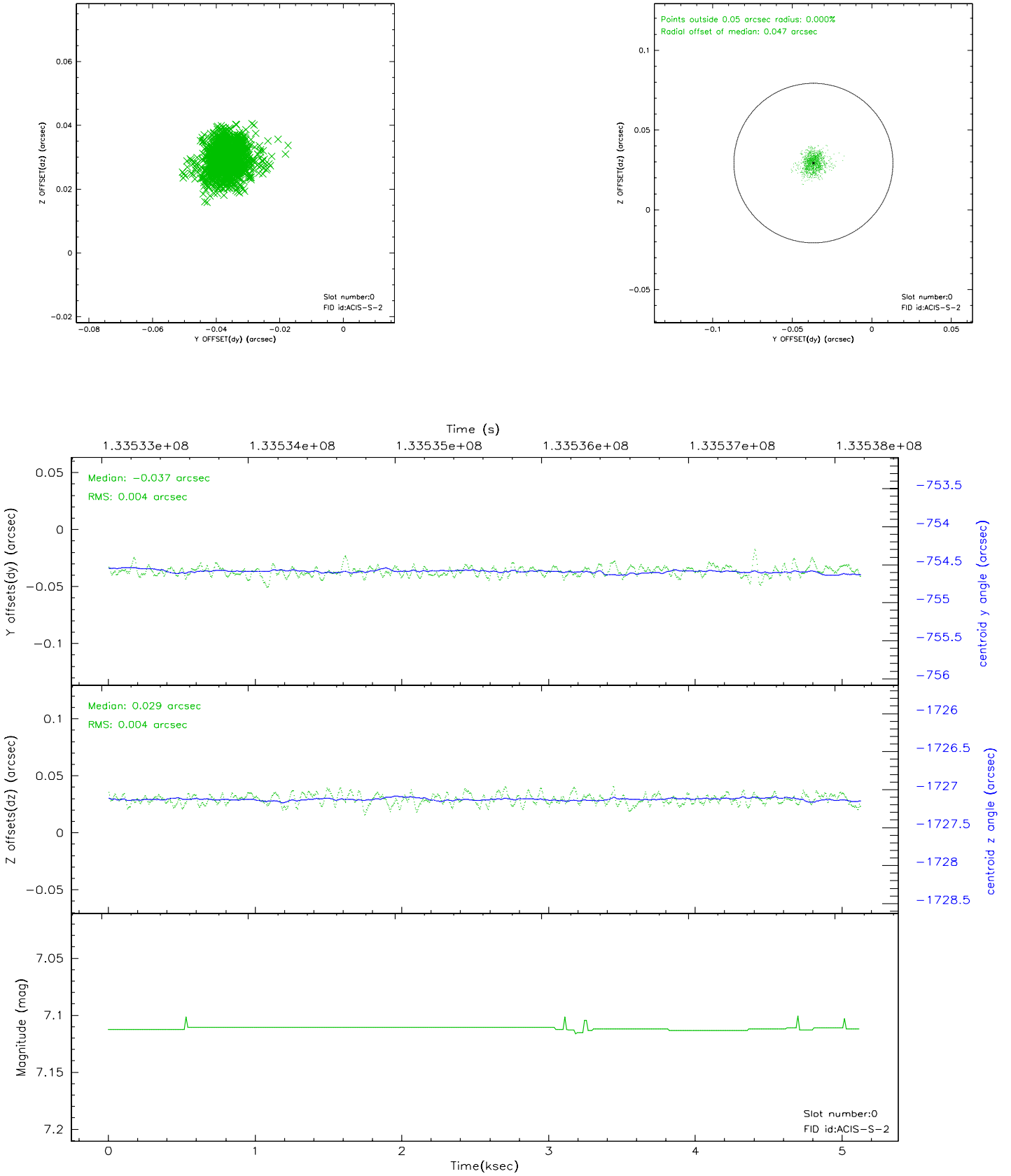


2.4.5 Slot 7

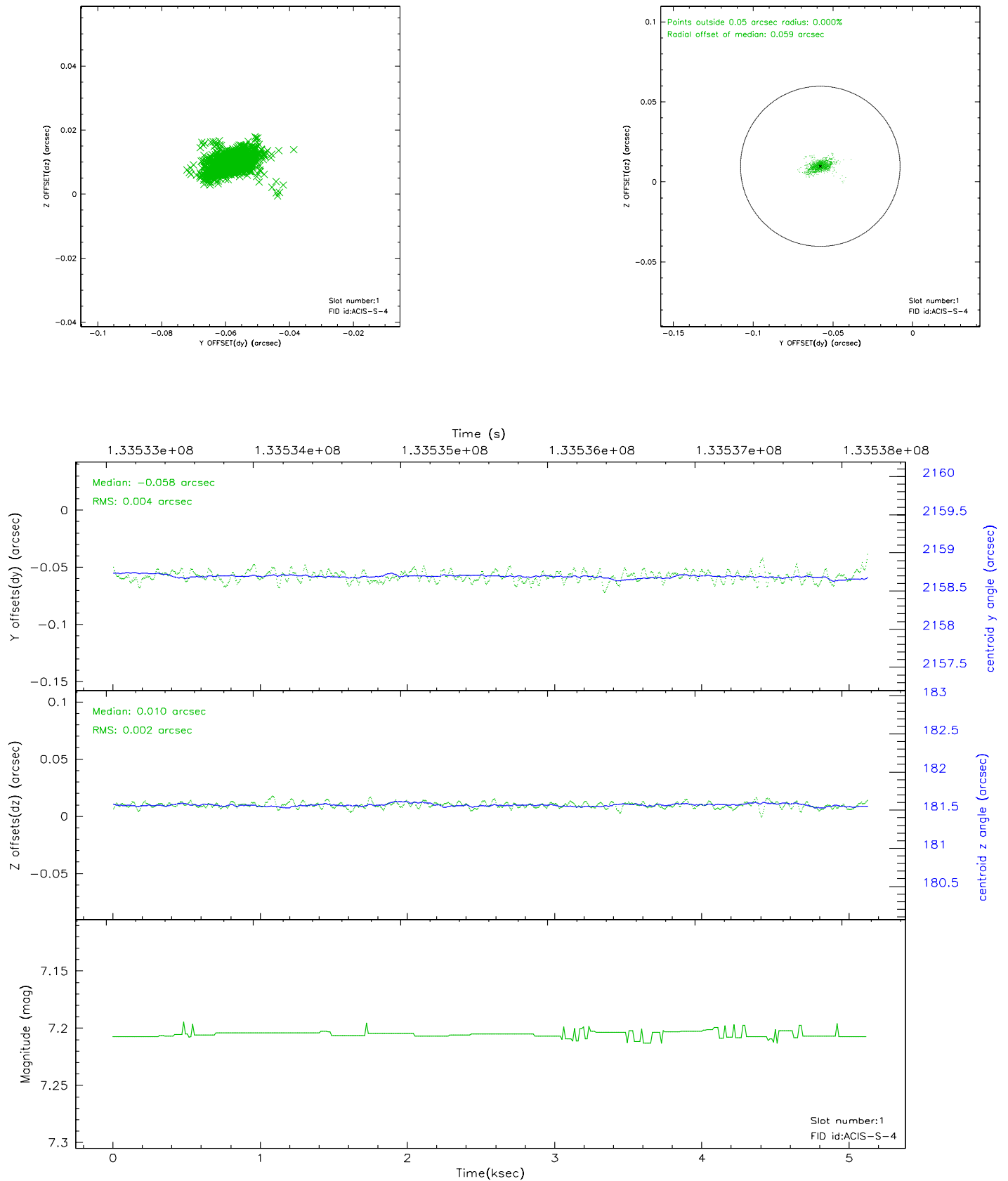


2.5 FID Slots

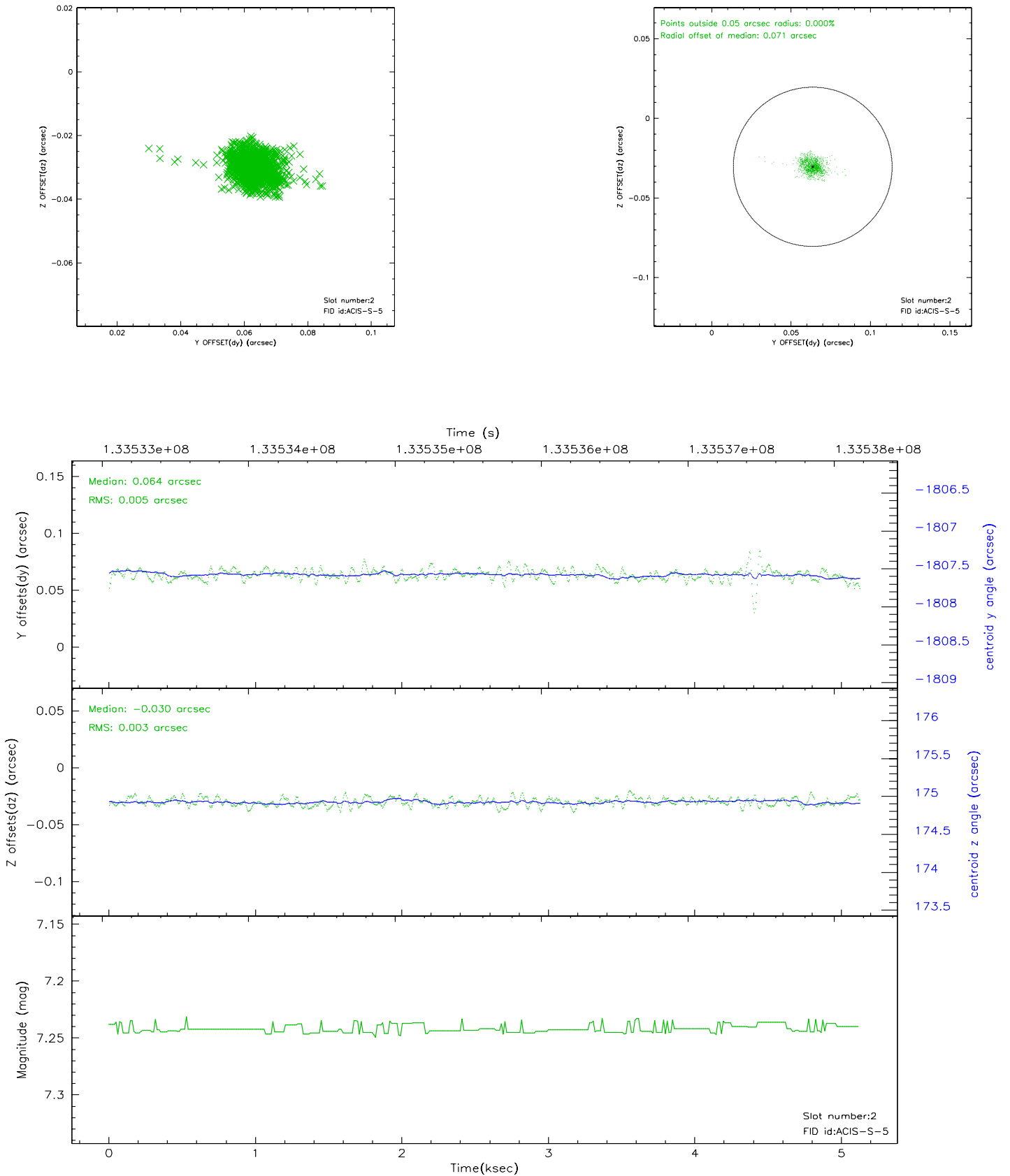
2.5.1 Slot 0



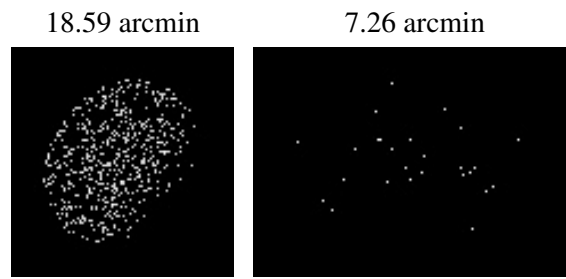
2.5.2 Slot 1



2.5.3 Slot 2



3 Point Sources



A Summary

A.1 Status

V&V Scientist	Jen Lauer
V&V Date (YYYY-MM-DD)	2006.09.08
V&V Edition	1
V&V Disposition and Status	OK
V&V Charge Time	5.12

A.2 Comments