

V&V Reference Report

L2 ASCDS Version : 7.6.9

Observation 3315 - L2 Version 001
Chandra X-Ray Center

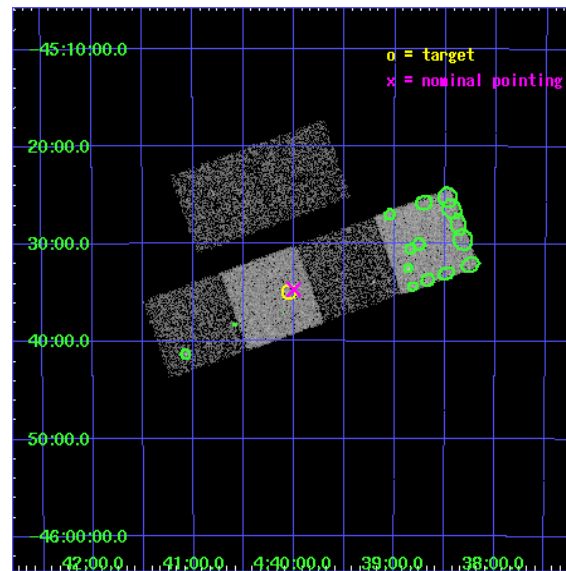
L2 Processing Date : Sep 20 2006

Contents

1	Front	2
2	OBI	3
2.1	OBI	3
2.1.1	Images	3
2.1.2	Bias	3
2.1.3	Parameters	4
2.1.4	Events	4
2.2	Compared Parameters	5
2.3	Aspect	6
2.4	Star Slots	9
2.4.1	Slot 3	9
2.4.2	Slot 4	10
2.4.3	Slot 5	11
2.4.4	Slot 6	12
2.4.5	Slot 7	13
2.5	FID Slots	14
2.5.1	Slot 0	14
2.5.2	Slot 1	15
2.5.3	Slot 2	16
3	Point Sources	17
A	Summary	18
A.1	Status	18
A.2	Comments	18

1 Front

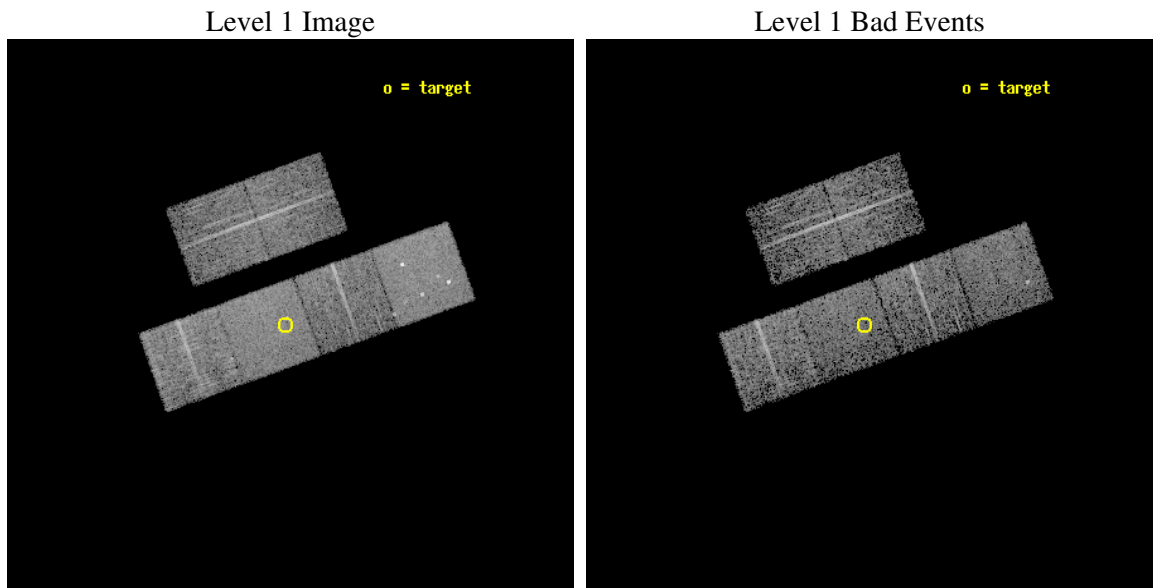
seq_num	900154
obs_id	3315
title	THE SHEEP SURVEY: WHAT KIND OF OBJECTS MAKE THE X-RAY BACKGROUND?
observer	Professor Kirpal Nandra
object	AX J0440.0-4534
dtcycle	0
cycle	P
ra_targ	70.012083
dec_targ	-45.583056
ra_nom	70.000172025498
dec_nom	-45.578230339381
roll_nom	160.2334088103
revision	2
ontime	4761.5999822617
livetime	4701.305736195
ontime2	4761.5999822617
ontime3	4761.5999822617
ontime5	4761.5999822617
ontime6	4761.5999822617
ontime7	4761.5999822617
ontime8	4761.5999822617
l2events	46788



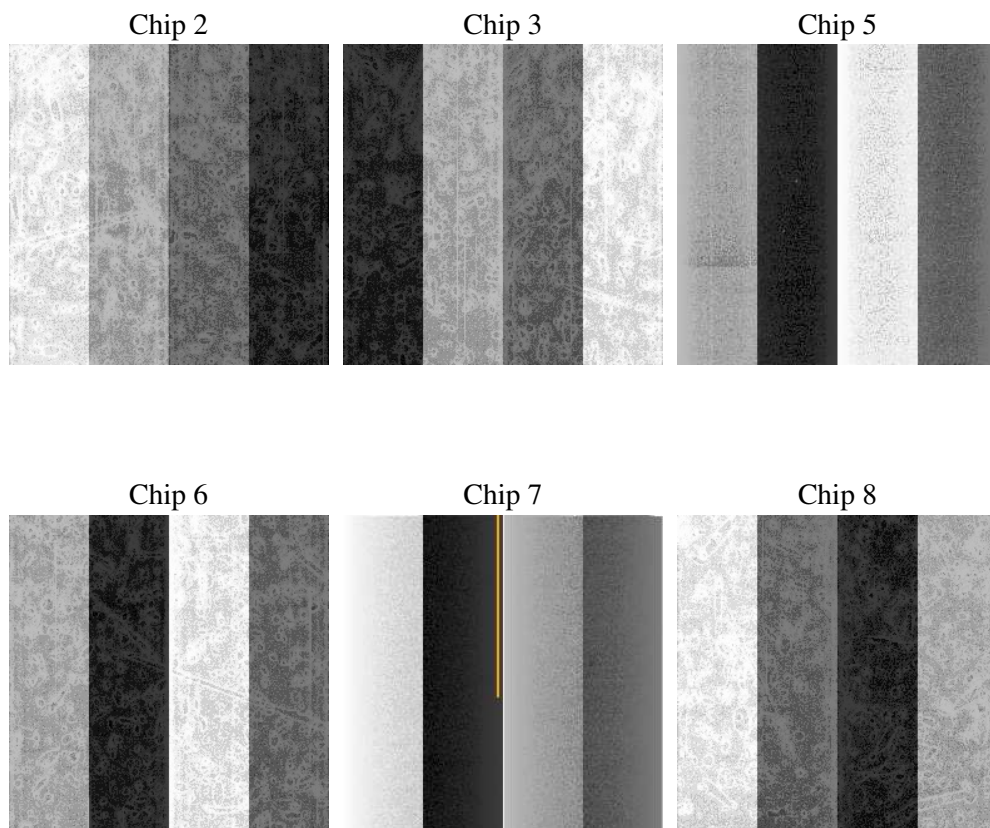
2 OBI

2.1 OBI

2.1.1 Images



2.1.2 Bias



2.1.3 Parameters

obi_num	0
ascdsver	7.6.9
caldbver	3.2.3
date	2006-09-20T22:47:03
revision	2

sched_exp_time	4800.000000
ontime	4767.5102155209
ontime2	4767.5102155209
ontime3	4767.5102155209
ontime5	4767.5102155209
ontime6	4767.5102155209
ontime7	4767.5102155209
ontime8	4767.5102155209
l1events	217670

2.1.4 Events

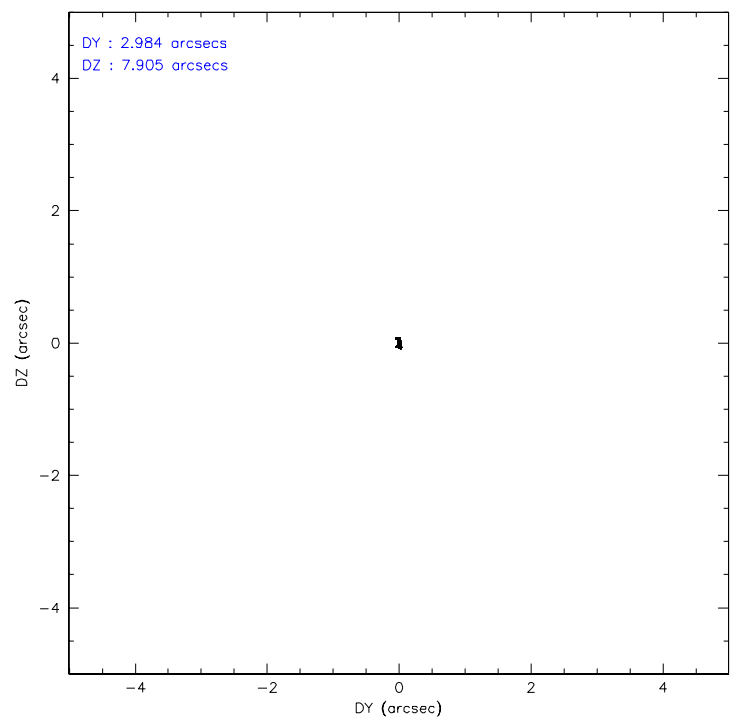
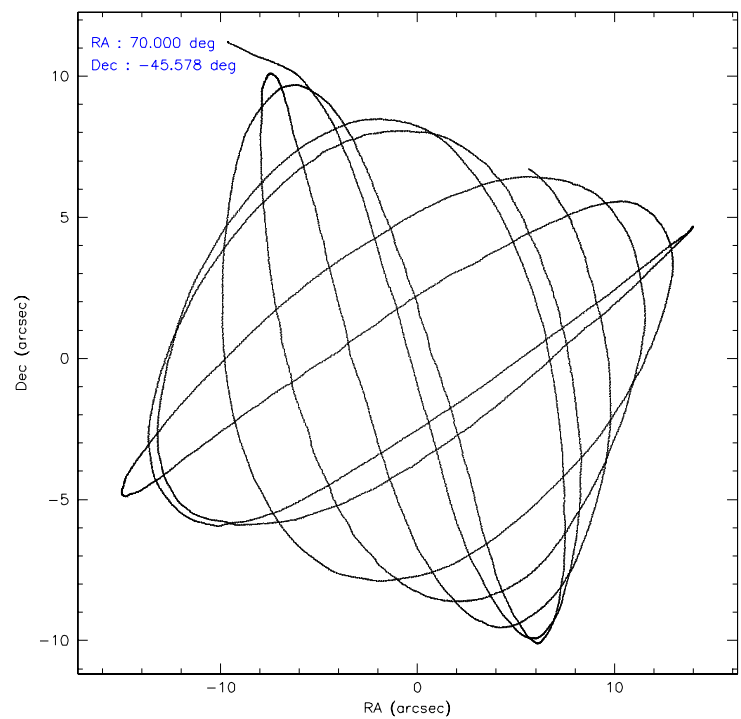
	ccd 2	ccd 3	ccd 5	ccd 6	ccd 7	ccd 8
level 1 events	30892	29687	46809	30893	40515	38874
rejected events	27226	26020	25360	27273	25135	30636
rejected %	88%	87%	54%	88%	62%	78%

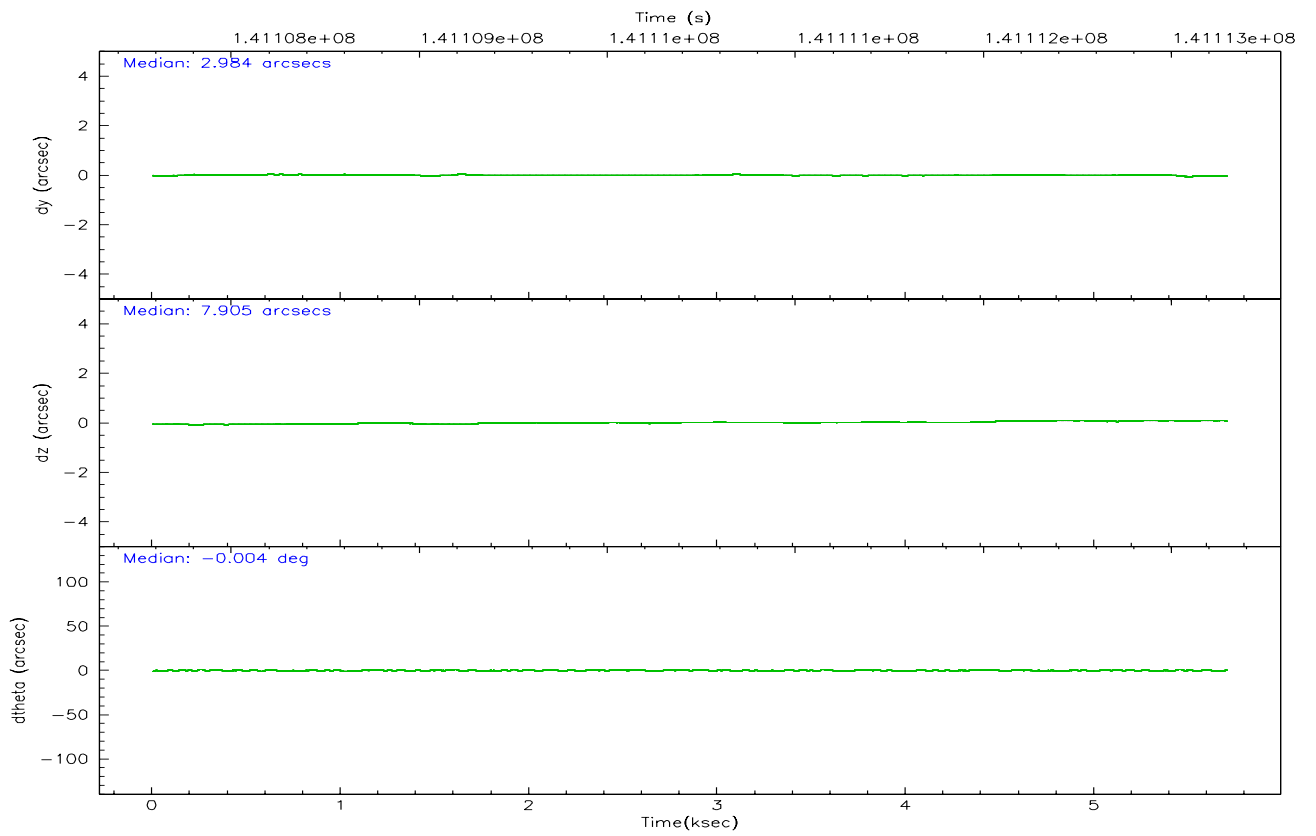
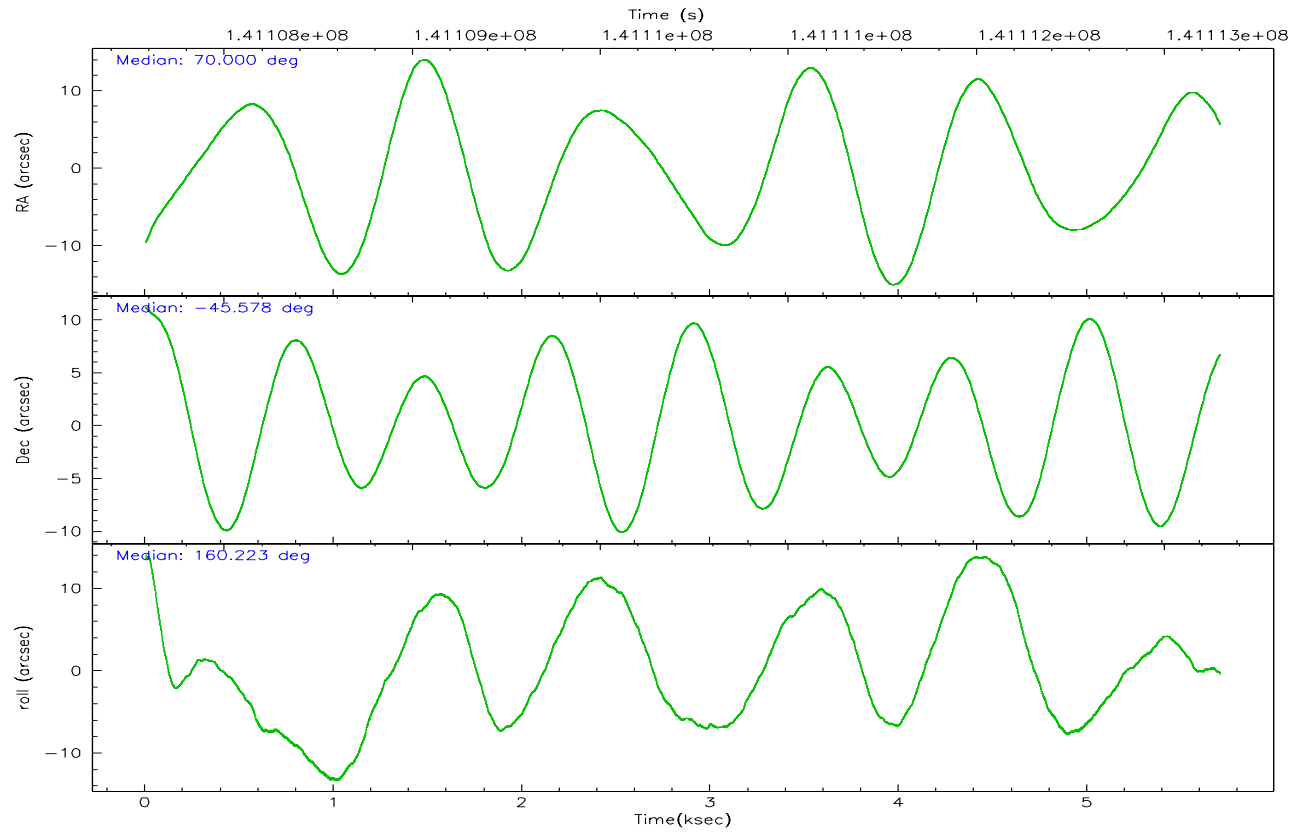
	ccd 2	ccd 3	ccd 5	ccd 6	ccd 7	ccd 8
grade 0 events	1597	1604	2751	1410	971	2691
	5%	5%	5%	4%	2%	6%
grade 1 events	11	13	46	15	29	15
	0%	0%	0%	0%	0%	0%
grade 2 events	809	759	6659	796	3788	1738
	2%	2%	14%	2%	9%	4%
grade 3 events	324	338	451	353	777	877
	1%	1%	0%	1%	1%	2%
grade 4 events	330	342	480	350	805	776
	1%	1%	1%	1%	1%	1%
grade 5 events	1145	1264	2241	1359	2758	1701
	3%	4%	4%	4%	6%	4%
grade 6 events	615	630	11137	715	9072	2164
	1%	2%	23%	2%	22%	5%
grade 7 events	26061	24737	23044	25895	22315	28912
	84%	83%	49%	83%	55%	74%

2.2 Compared Parameters

Parameter	Planned	Actual	Parameter	Planned	Actual
Instrument	ACIS	ACIS	Obspar format version number	6	6
Detector	ACIS-235678	ACIS-235678	Obspar file type	PREDICTED	ACTUAL
Grating	NONE	NONE	Obspar update status	NONE	UPDATED
Data mode	FAINT	FAINT	Number of optional ACIS chips dropped	0	0
Observation mode	POINTING	POINTING	On-chip summing requested	N	N
Pointing RA	70.038286	70.00017202549759	Subarray requested	NONE	NONE
Pointing Dec	-45.573035	-45.57823033938146	Alternating exposures requested	N	N
Pointing Roll	160.103987	160.2334088102982	Primary exposure time	0.000000	3.2
SIM focus pos (mm)	-0.684267	-0.6828225247311905			
SIM defocus (mm)	0	0.001444936568705701			
SIM translation stage pos (mm)	-190.132523	-190.1425803651734			
SIM translation stage offset (mm)	0	0.01005778216563158			
Observation start time	141108493.184000	141107171.31525			
Observation start date	2002-06-22T04:47:09	2002-06-22T04:26:11			
Observation end time	141113293.184000	141113876.35303			
Observation end date	2002-06-22T06:07:09	2002-06-22T06:17:56			
Read mode	TIMED	TIMED			

2.3 Aspect



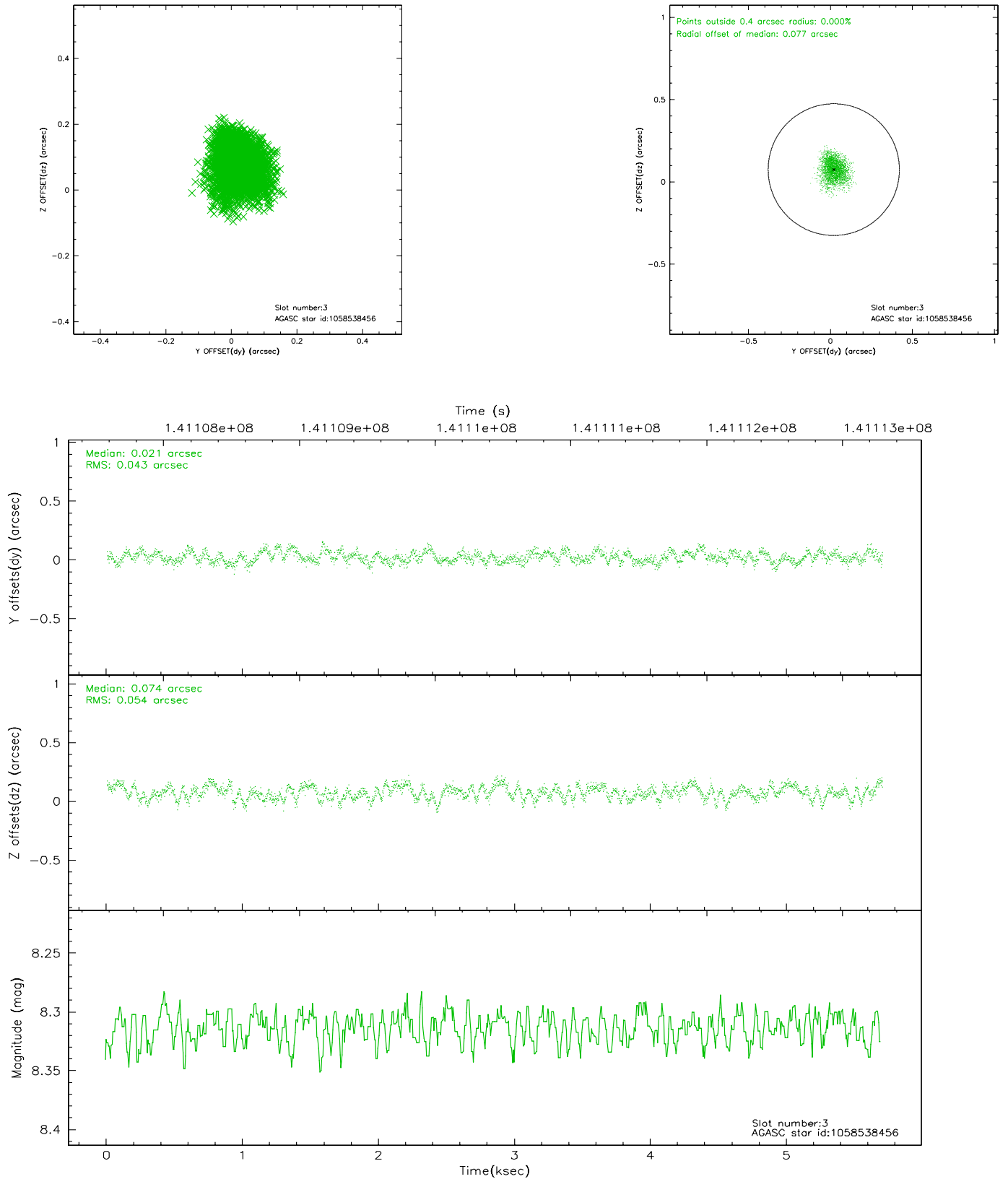


Slot Statistics

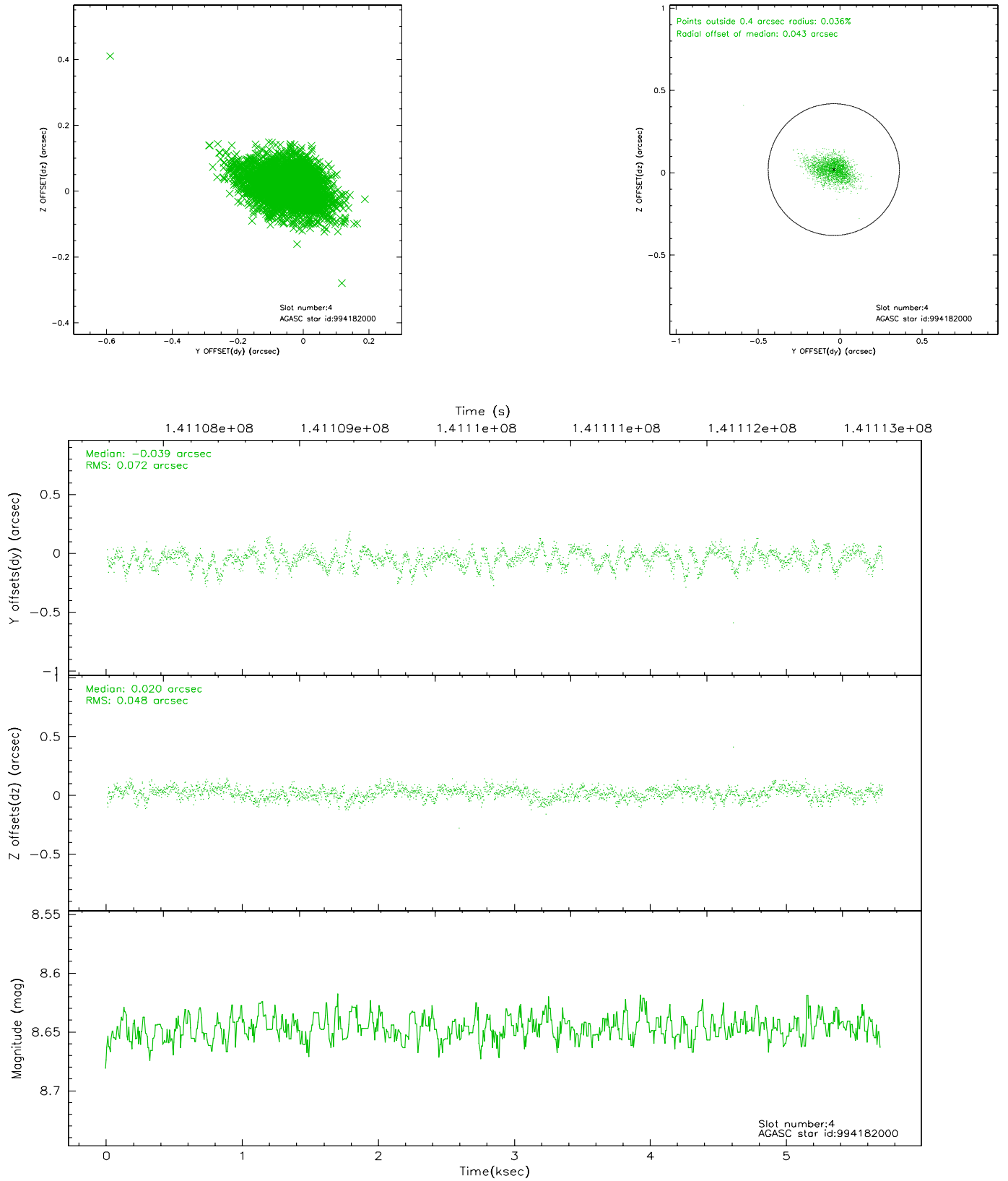
slot	status	id	mag	n_pts	med_dy	med_dz	dr1	dr2	ra	dec	mean_y	mean_z
0	FID	ACIS-S-2	7.11	1391	0.007	0.019	0.006	0.010	0.000000	0.000000	-755.63	-1729.02
1	FID	ACIS-S-4	7.20	1391	-0.070	-0.008	0.005	0.008	0.000000	0.000000	2157.11	178.33
2	FID	ACIS-S-5	7.24	1392	0.032	-0.002	0.006	0.010	0.000000	0.000000	-1807.09	173.23
3	GUIDE	1058538456	8.31	2781	0.021	0.074	0.074	0.118	70.444308	-45.307467	-641.25	-1245.77
4	GUIDE	994182000	8.65	2783	-0.039	0.020	0.088	0.151	69.462706	-44.781505	2351.84	-2173.34
5	GUIDE	1058544424	9.49	2778	0.114	-0.019	0.094	0.149	70.091798	-46.111879	-784.46	1778.40
6	GUIDE	1058543952	8.74	2783	0.005	-0.178	0.081	0.137	70.076625	-46.293272	-972.16	2406.66
7	GUIDE	994183392	10.15	2675	-0.095	0.109	0.173	0.295	69.404806	-44.886131	2359.63	-1767.45

2.4 Star Slots

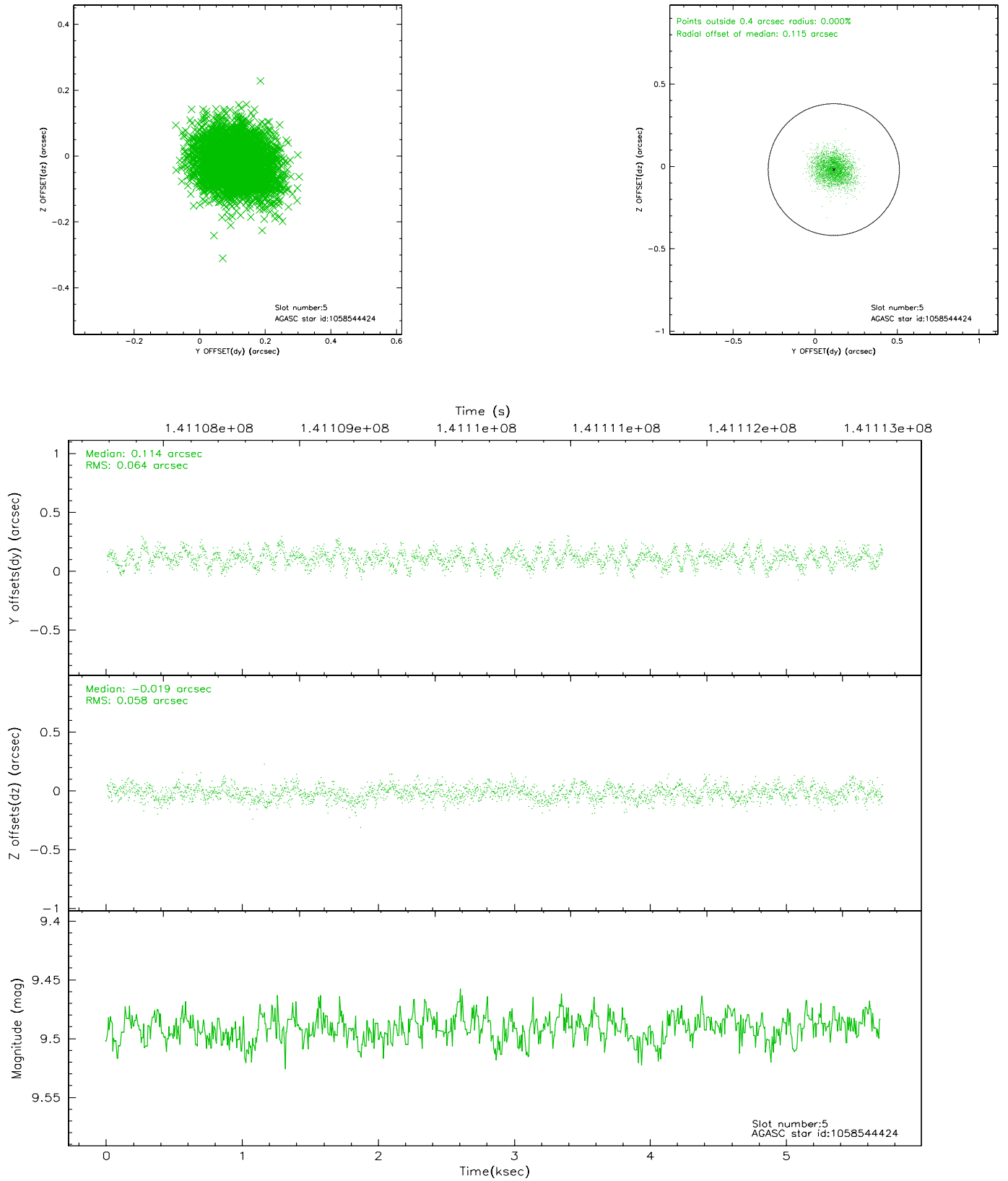
2.4.1 Slot 3



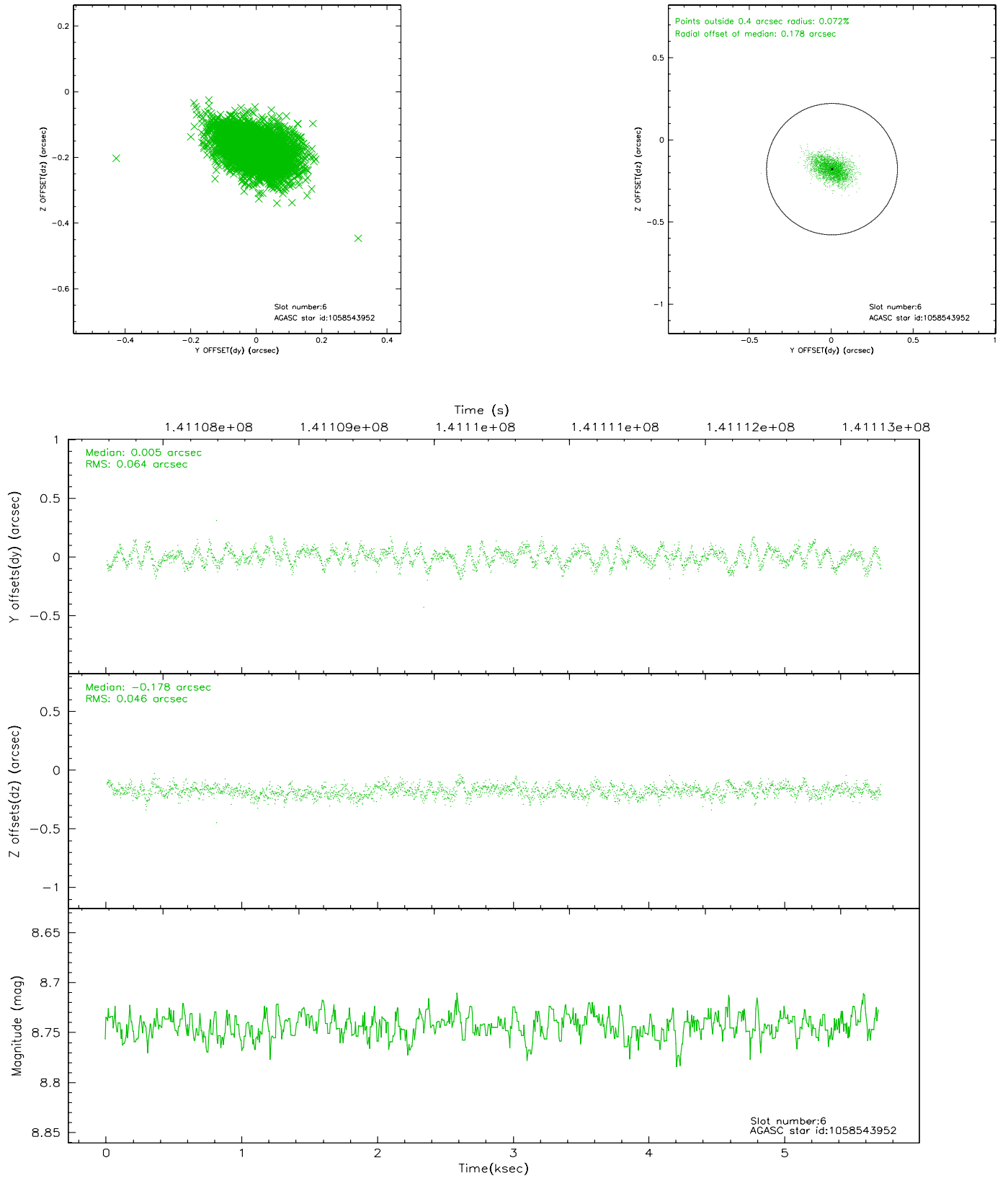
2.4.2 Slot 4



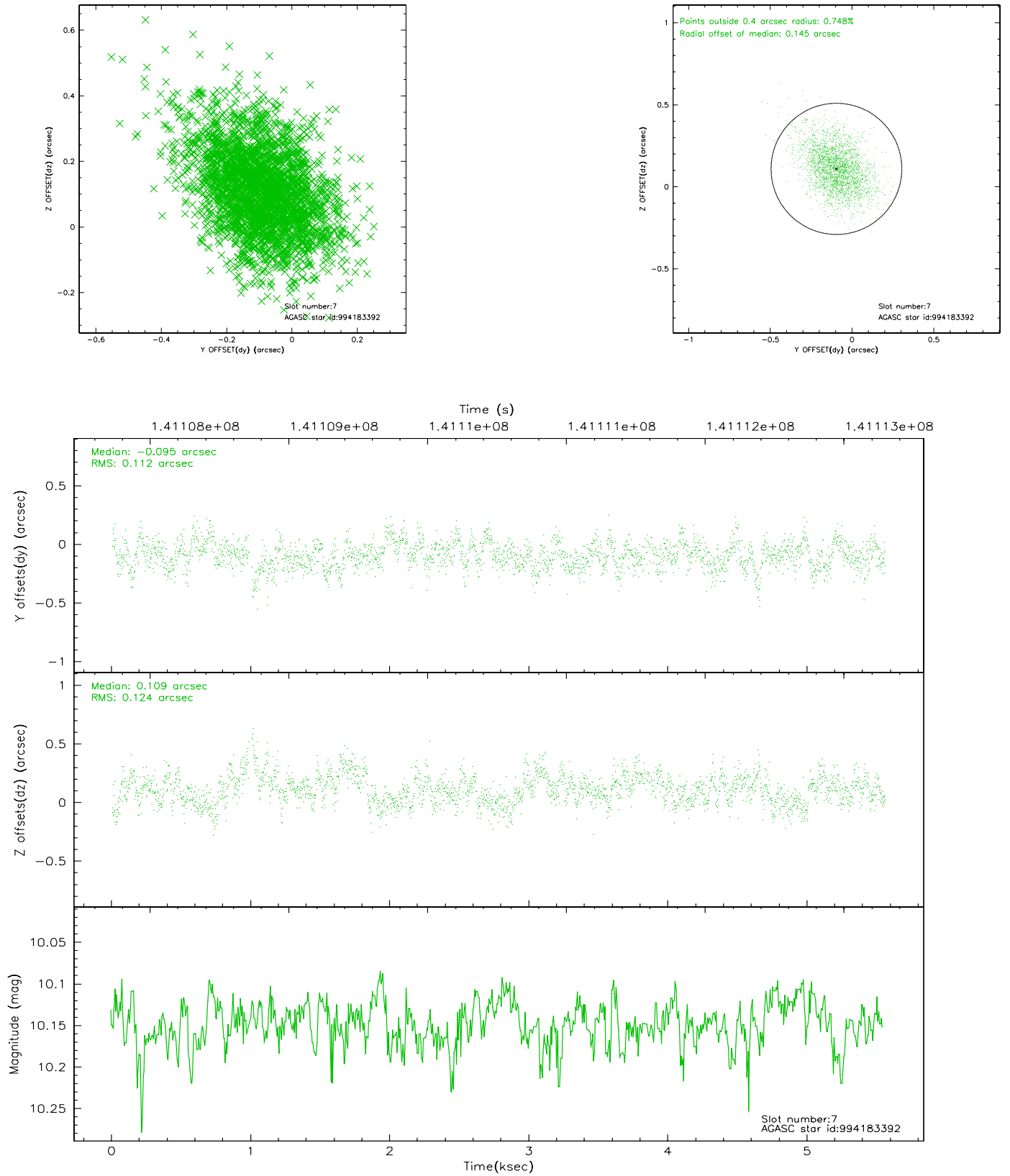
2.4.3 Slot 5



2.4.4 Slot 6

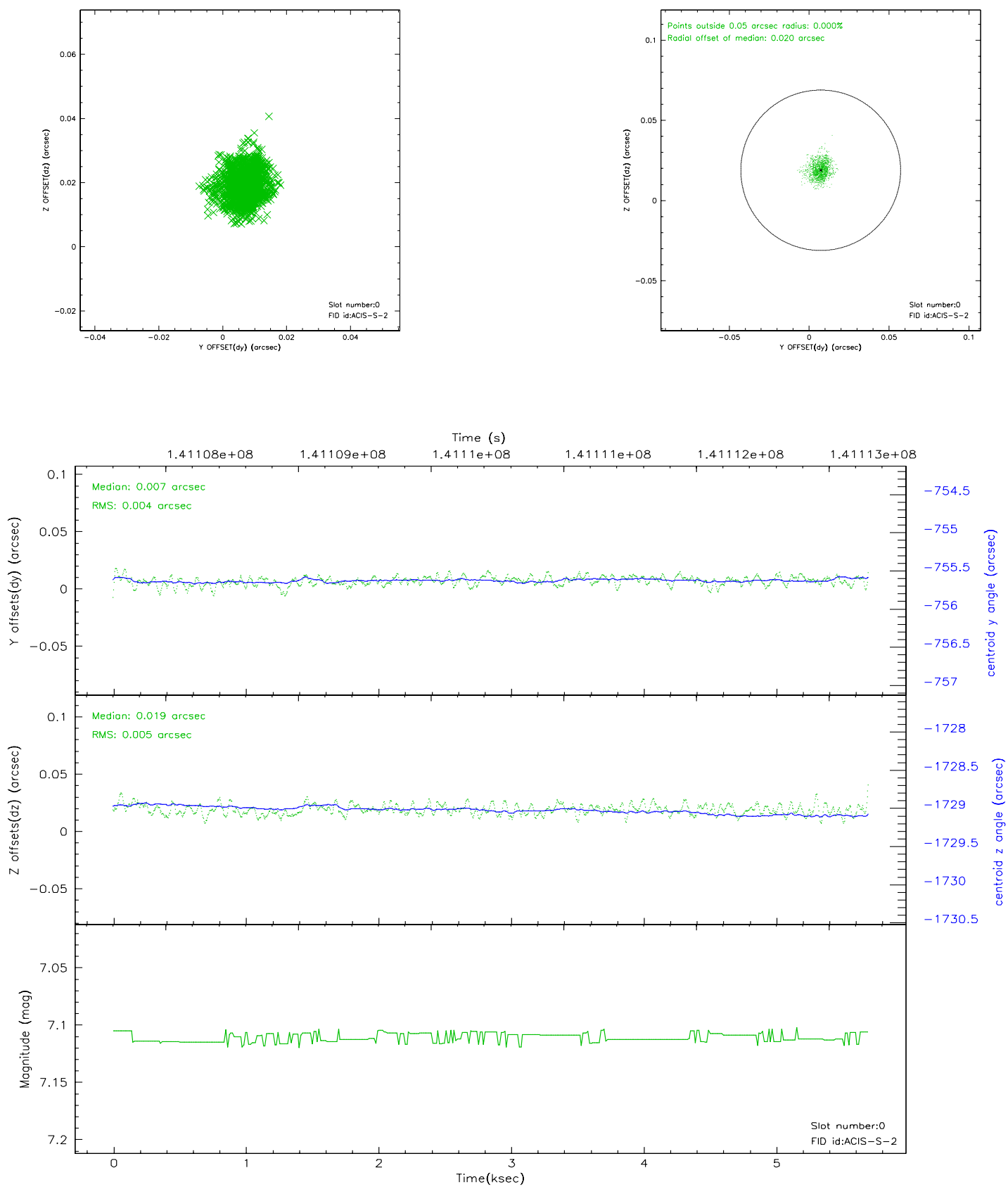


2.4.5 Slot 7

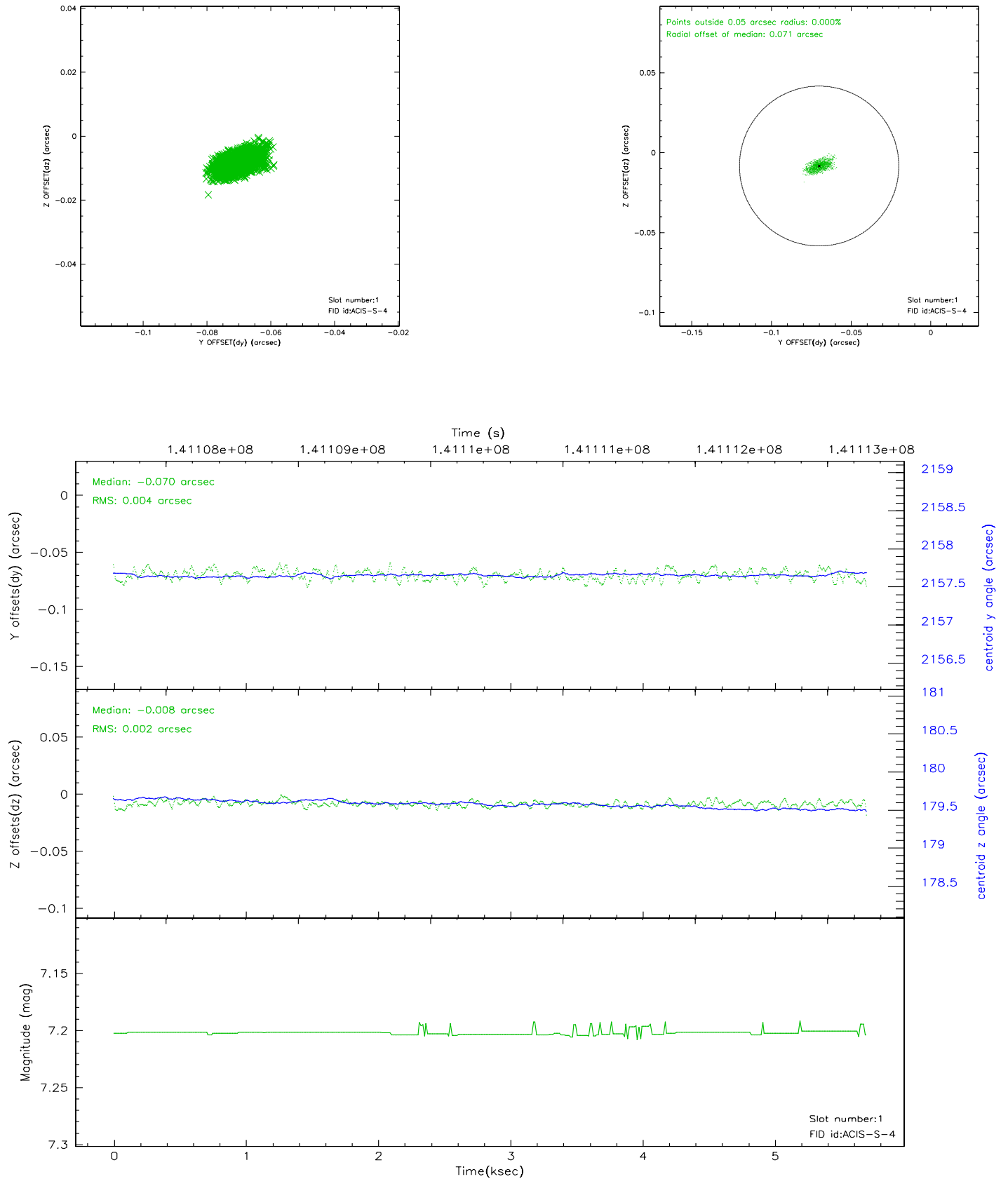


2.5 FID Slots

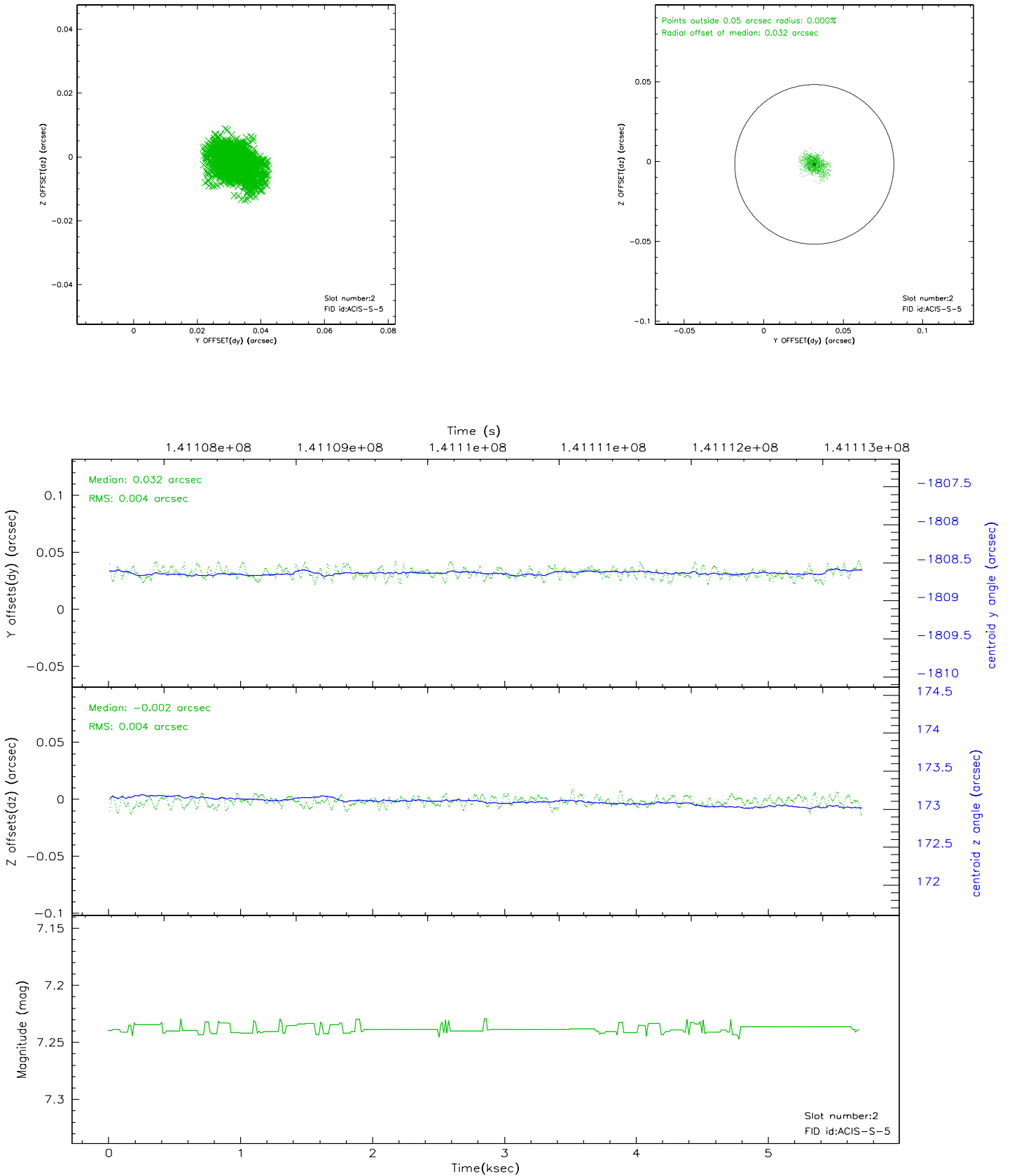
2.5.1 Slot 0



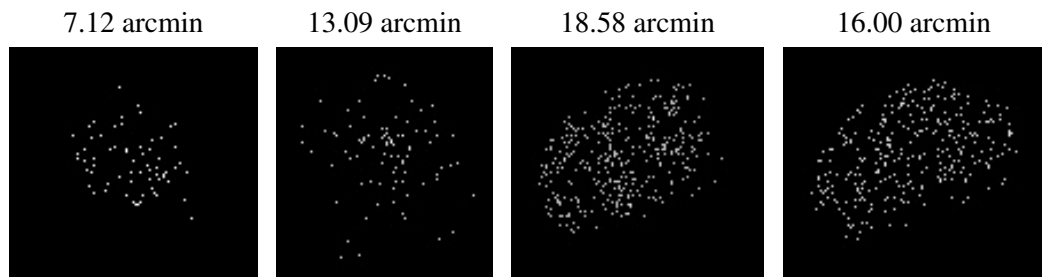
2.5.2 Slot 1



2.5.3 Slot 2



3 Point Sources



A Summary

A.1 Status

V&V Scientist	Beth Sundheim
V&V Date (YYYY-MM-DD)	2006.09.21
V&V Edition	1
V&V Disposition and Status	OK
V&V Charge Time	4.764

A.2 Comments