

V&V Reference Report

L2 ASCDS Version : 7.6.9

Observation 3314 - L2 Version 001
Chandra X-Ray Center

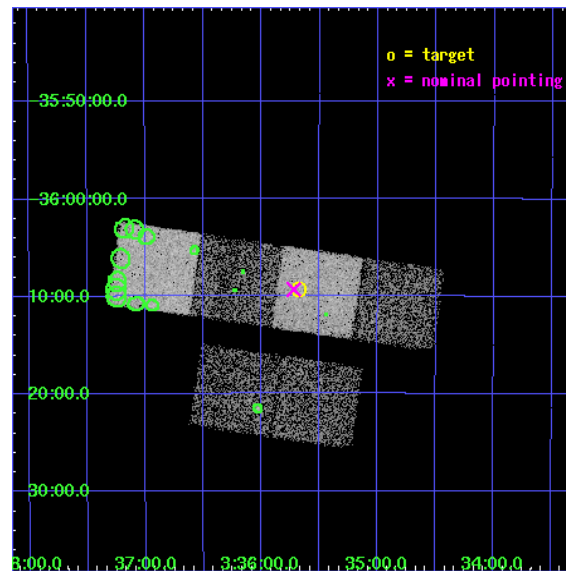
L2 Processing Date : Oct 9 2006

Contents

1	Front	2
2	OBI	3
2.1	OBI	3
2.1.1	Images	3
2.1.2	Bias	3
2.1.3	Parameters	4
2.1.4	Events	4
2.2	Compared Parameters	5
2.3	Aspect	6
2.4	Star Slots	9
2.4.1	Slot 3	9
2.4.2	Slot 4	10
2.4.3	Slot 5	11
2.4.4	Slot 6	12
2.4.5	Slot 7	13
2.5	FID Slots	14
2.5.1	Slot 0	14
2.5.2	Slot 1	15
2.5.3	Slot 2	16
3	Point Sources	17
A	Summary	18
A.1	Status	18
A.2	Comments	18

1 Front

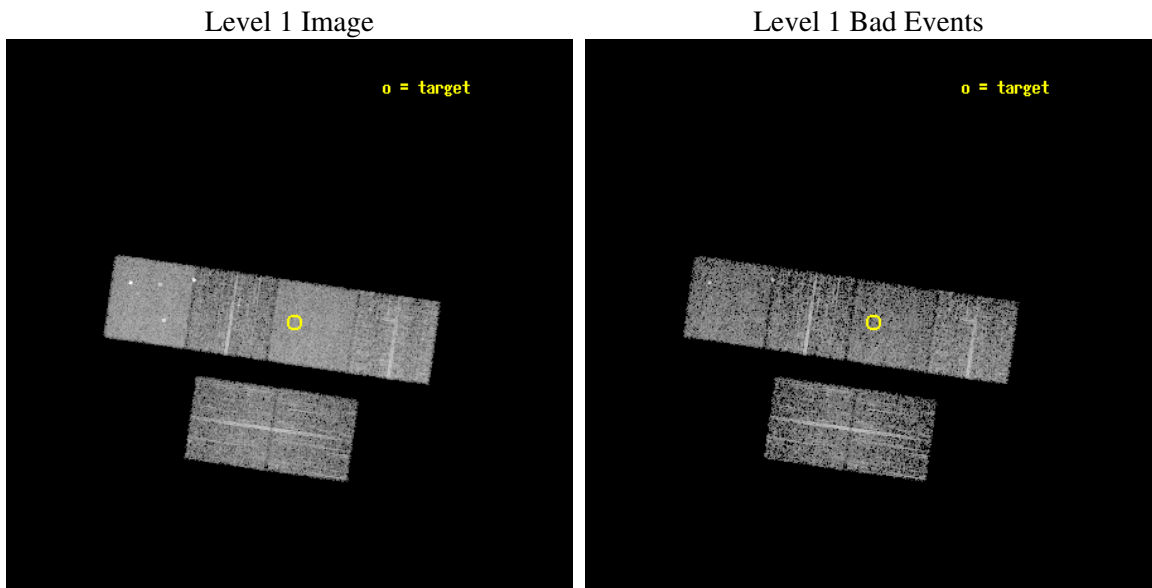
seq_num	900153
obs_id	3314
title	THE SHEEP SURVEY: WHAT KIND OF OBJECTS MAKE THE X-RAY BACKGROUND?
observer	Professor Kirpal Nandra
object	AX J0335.6-3609
dtcycle	0
cycle	P
ra_targ	53.918333
dec_targ	-36.155
ra_nom	53.930389589108
dec_nom	-36.155335870408
roll_nom	8.2191917665996
revision	2
ontime	4723.1999824047
livetime	4663.3919802579
ontime2	4723.1999824047
ontime3	4723.1999824047
ontime5	4723.1999824047
ontime6	4723.1999824047
ontime7	4723.1999824047
ontime8	4719.9590121508
l2events	49054



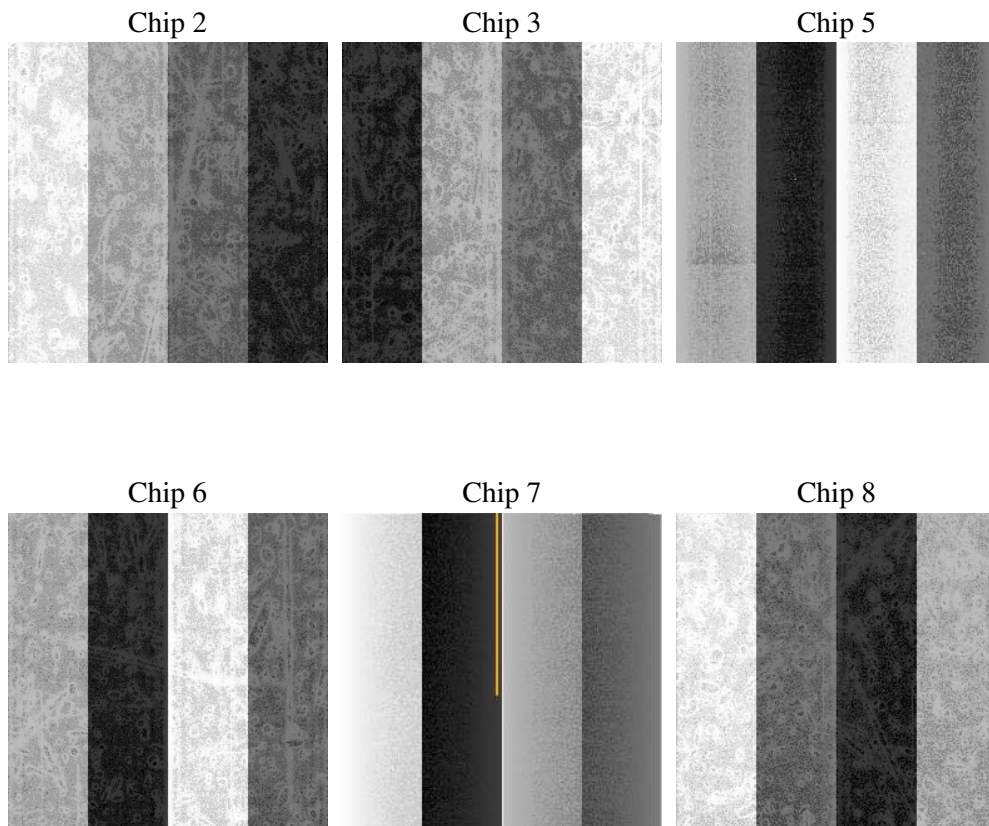
2 OBI

2.1 OBI

2.1.1 Images



2.1.2 Bias



2.1.3 Parameters

obi_num	1
ascdsver	7.6.9
caldbver	3.2.3
date	2006-10-09T11:32:41
revision	2

sched_exp_time	5000.000000
ontime	4728.623916477
ontime2	4728.6238865256
ontime3	4728.6238865256
ontime5	4728.6238865256
ontime6	4728.6239064634
ontime7	4728.623916477
ontime8	4725.3828266263
l1events	209897

2.1.4 Events

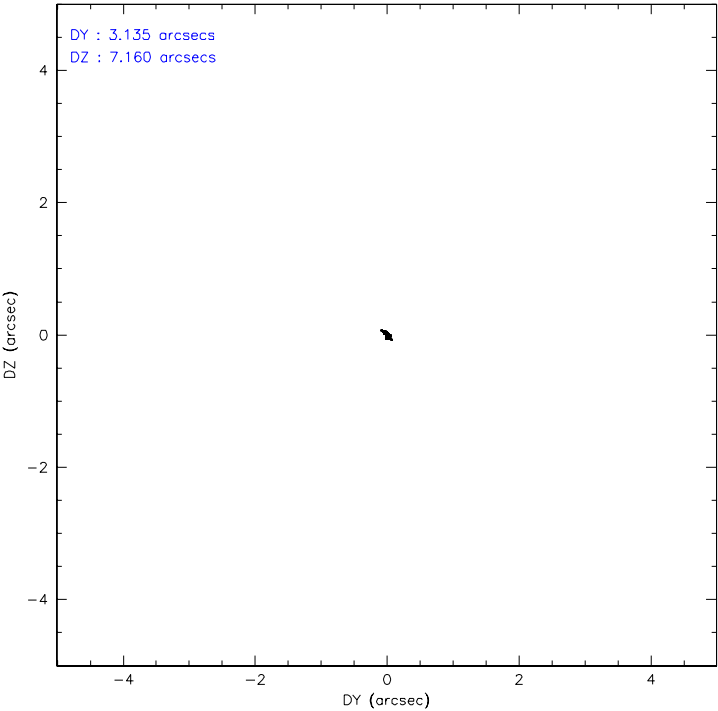
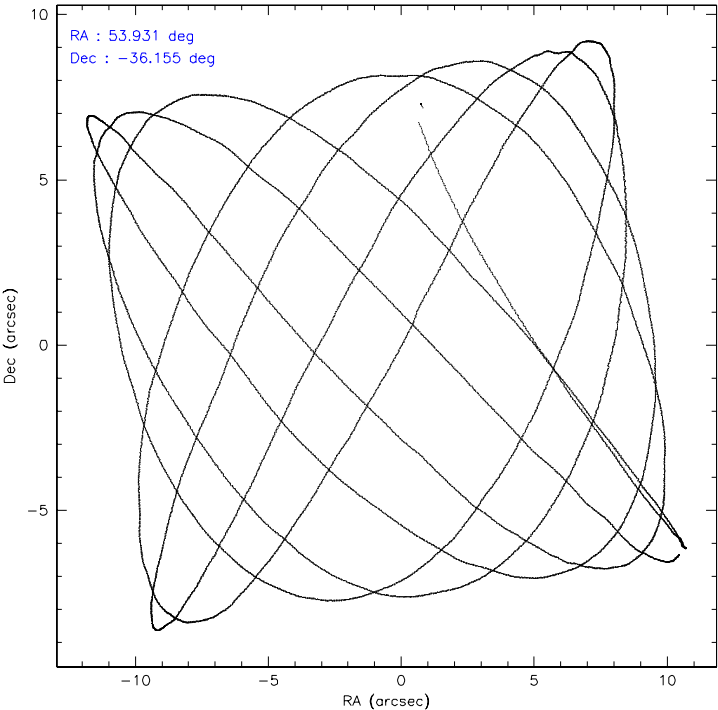
	ccd 2	ccd 3	ccd 5	ccd 6	ccd 7	ccd 8
level 1 events	28585	27003	45309	29472	39865	39663
rejected events	24857	23411	23599	25167	23541	30646
rejected %	86%	86%	52%	85%	59%	77%

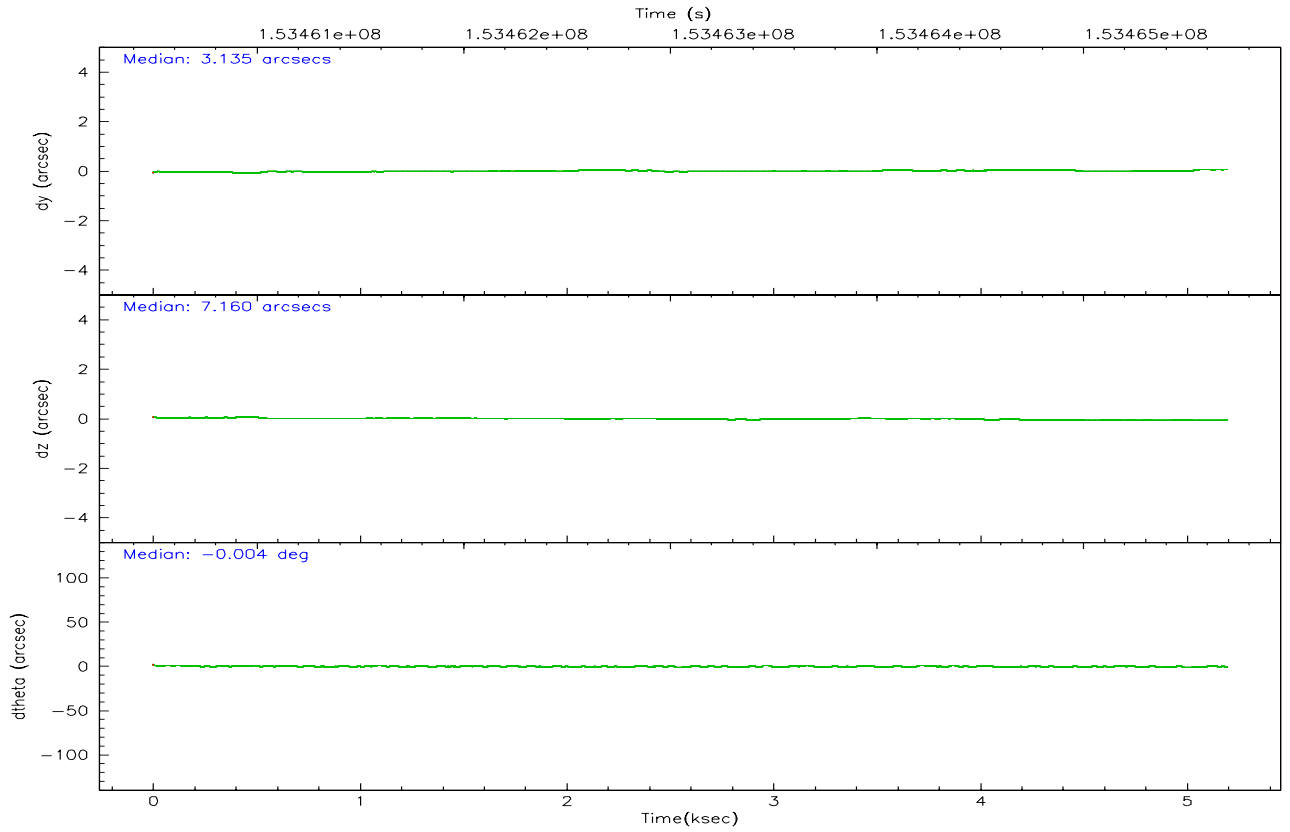
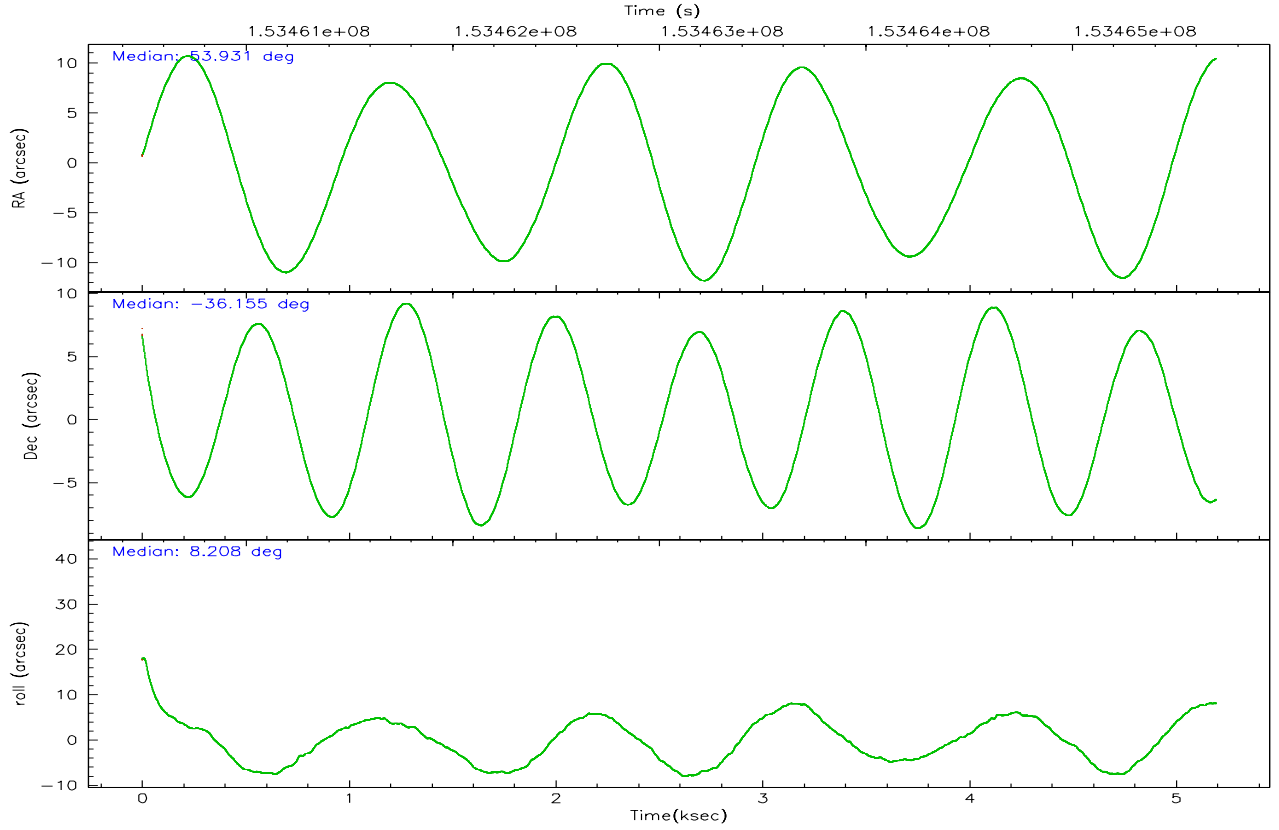
	ccd 2	ccd 3	ccd 5	ccd 6	ccd 7	ccd 8
grade 0 events	1764	1675	2388	1990	1125	3106
	6%	6%	5%	6%	2%	7%
grade 1 events	25	19	115	7	20	48
	0%	0%	0%	0%	0%	0%
grade 2 events	703	675	6667	867	3936	1680
	2%	2%	14%	2%	9%	4%
grade 3 events	343	337	593	358	882	1147
	1%	1%	1%	1%	2%	2%
grade 4 events	321	284	592	384	811	1003
	1%	1%	1%	1%	2%	2%
grade 5 events	1077	1133	2084	1265	2466	1668
	3%	4%	4%	4%	6%	4%
grade 6 events	601	625	11486	711	9580	2086
	2%	2%	25%	2%	24%	5%
grade 7 events	23751	22255	21384	23890	21045	28925
	83%	82%	47%	81%	52%	72%

2.2 Compared Parameters

Parameter	Planned	Actual	Parameter	Planned	Actual
Instrument	ACIS	ACIS	Obspar format version number	6	6
Detector	ACIS-235678	ACIS-235678	Obspar file type	PREDICTED	ACTUAL
Grating	NONE	NONE	Obspar update status	NONE	UPDATED
Data mode	FAINT	FAINT	Number of optional ACIS chips dropped	0	0
Observation mode	POINTING	POINTING	On-chip summing requested	N	N
Pointing RA	53.904082	53.93038958910832	Subarray requested	NONE	NONE
Pointing Dec	-36.172441	-36.15533587040838	Alternating exposures requested	N	N
Pointing Roll	8.047017	8.219191766599613	Primary exposure time	0.000000	3.2
SIM focus pos (mm)	-0.684267	-0.6828225247311905			
SIM defocus (mm)	0	0.001444936568705701			
SIM translation stage pos (mm)	-190.132523	-190.1425803651734			
SIM translation stage offset (mm)	0	0.01005778216563158			
Observation start time	153460689.184000	153460038.25022			
Observation start date	2002-11-12T03:57:05	2002-11-12T03:47:18			
Observation end time	153465689.184000	153466764.3005			
Observation end date	2002-11-12T05:20:25	2002-11-12T05:39:24			
Read mode	TIMED	TIMED			

2.3 Aspect



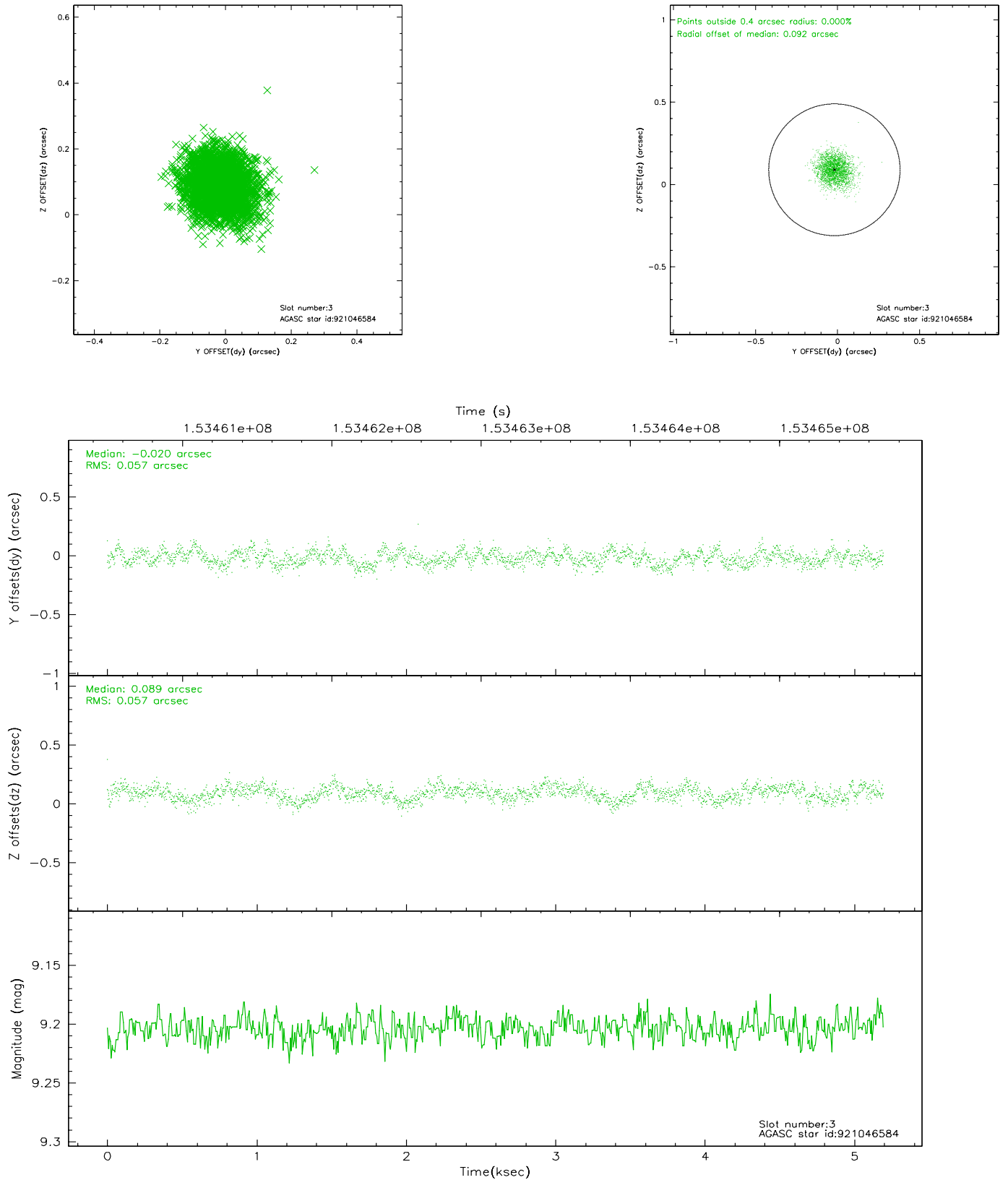


Slot Statistics

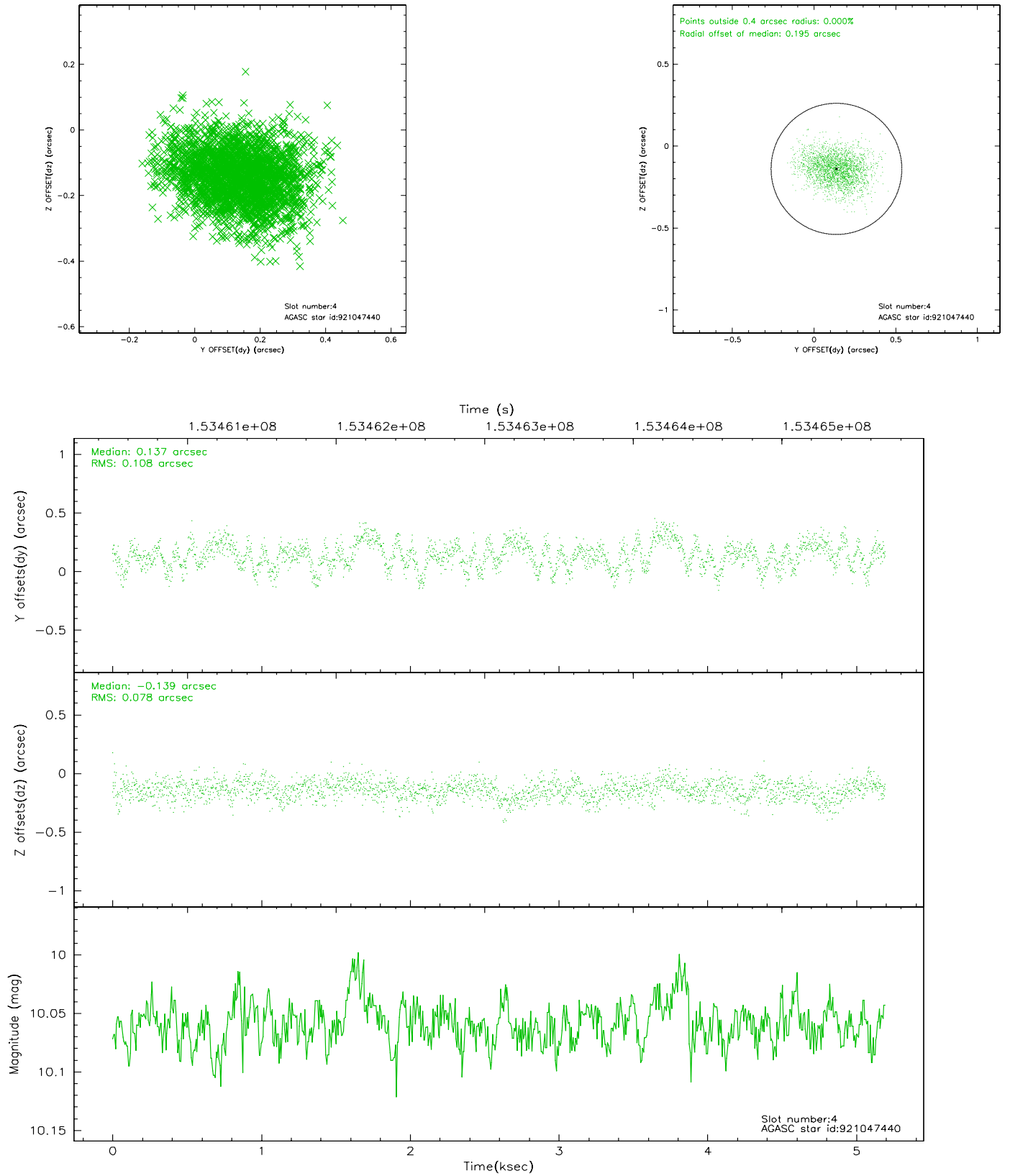
slot	status	id	mag	n_pts	med_dy	med_dz	dr1	dr2	ra	dec	mean_y	mean_z
0	FID	ACIS-S-2	7.11	1268	-0.006	0.023	0.006	0.010	0.000000	0.000000	-755.78	-1728.26
1	FID	ACIS-S-4	7.20	1268	-0.035	-0.003	0.005	0.008	0.000000	0.000000	2156.93	179.01
2	FID	ACIS-S-5	7.24	1268	0.010	-0.011	0.006	0.010	0.000000	0.000000	-1807.11	173.98
3	GUIDE	921046584	9.20	2534	-0.020	0.089	0.086	0.134	53.976815	-36.314393	137.14	-535.64
4	GUIDE	921047440	10.06	2535	0.137	-0.139	0.141	0.232	53.289207	-35.625675	-1507.34	2194.27
5	GUIDE	921048648	9.04	2534	-0.028	0.026	0.088	0.145	53.884610	-35.870023	95.07	1086.88
6	GUIDE	921966928	8.78	2535	-0.041	0.022	0.076	0.128	54.599932	-36.625009	1761.71	-1901.11
7	GUIDE	921970112	9.56	2534	-0.057	0.013	0.150	0.224	54.291262	-35.695592	1360.87	1538.50

2.4 Star Slots

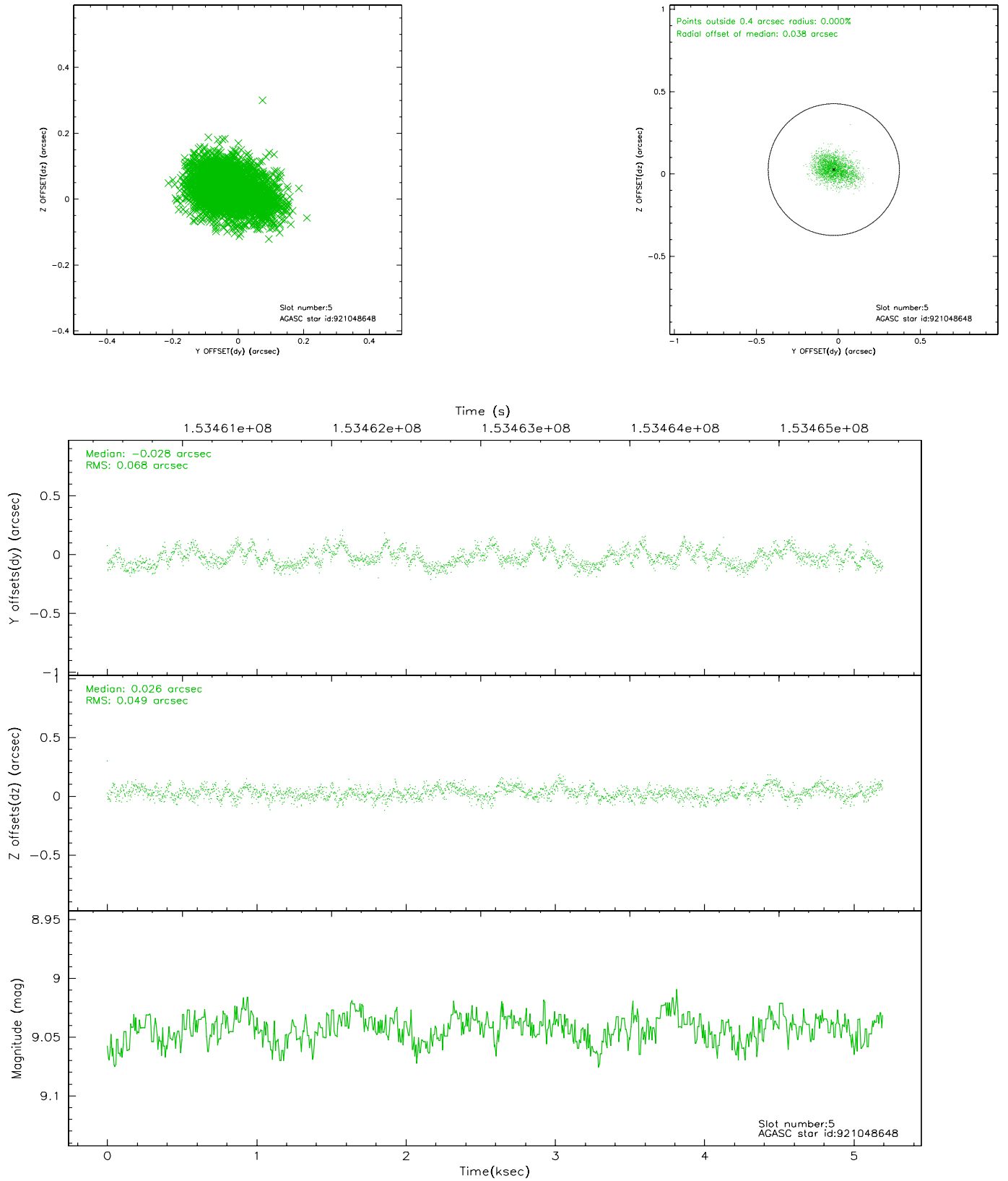
2.4.1 Slot 3



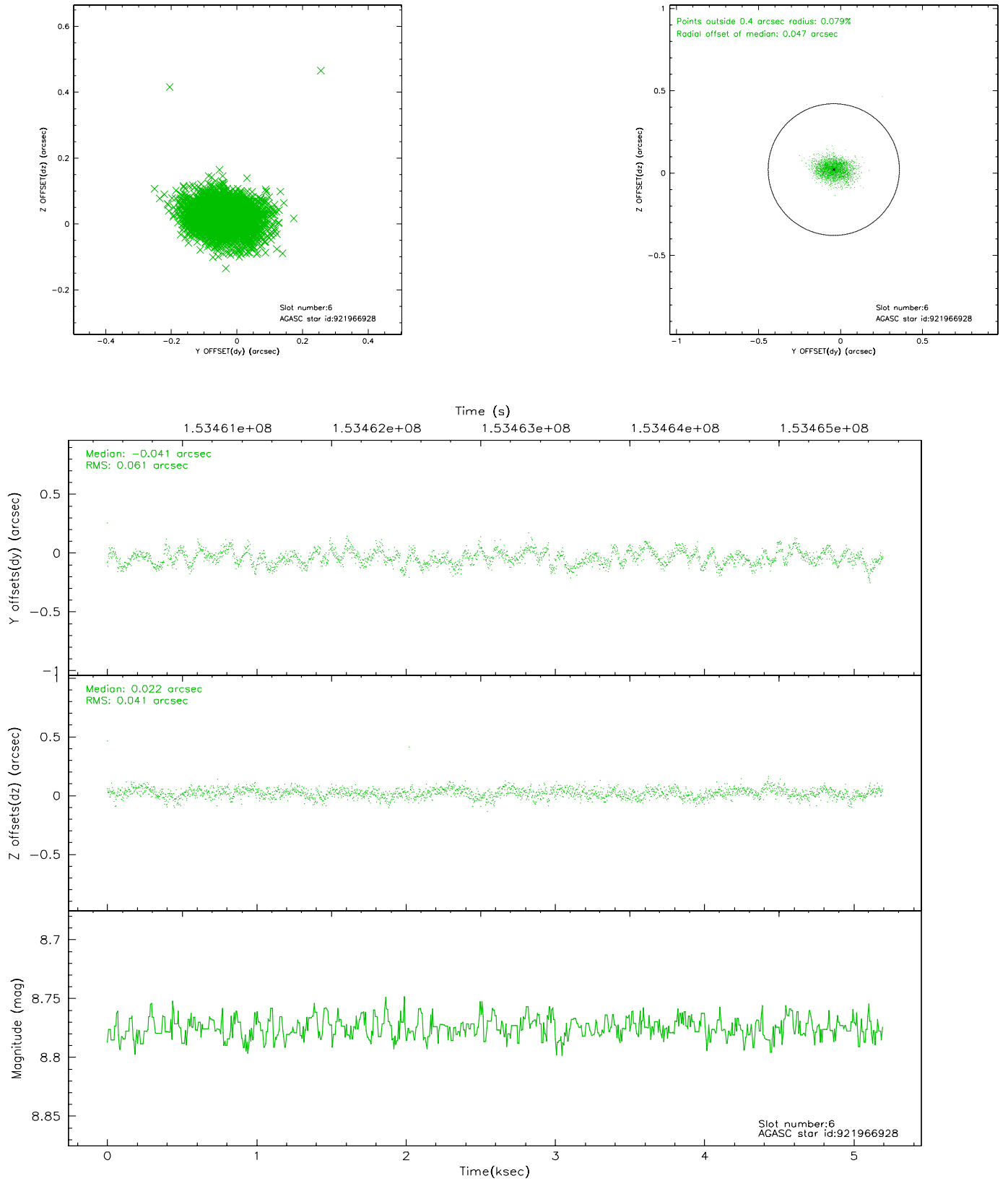
2.4.2 Slot 4



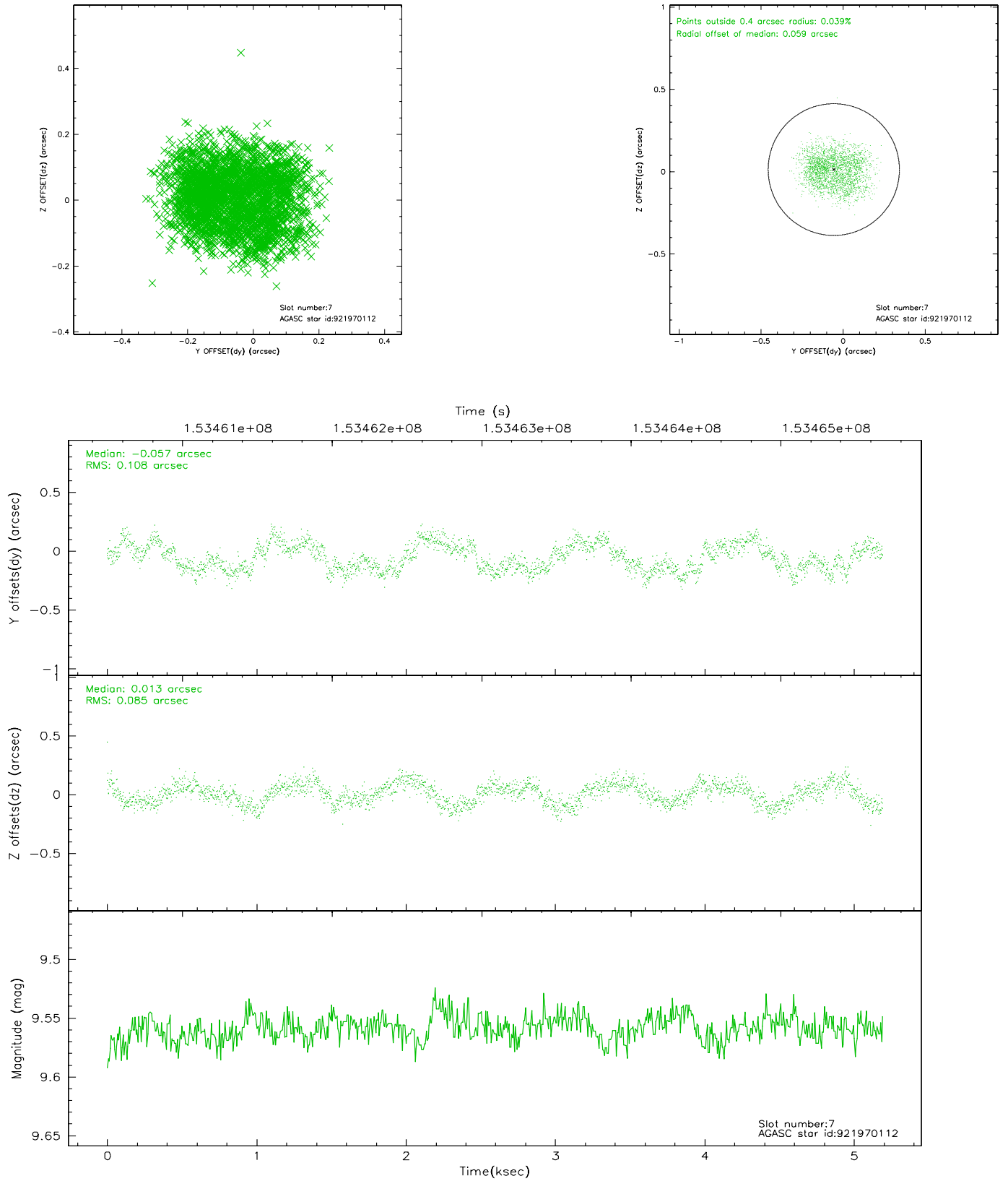
2.4.3 Slot 5



2.4.4 Slot 6

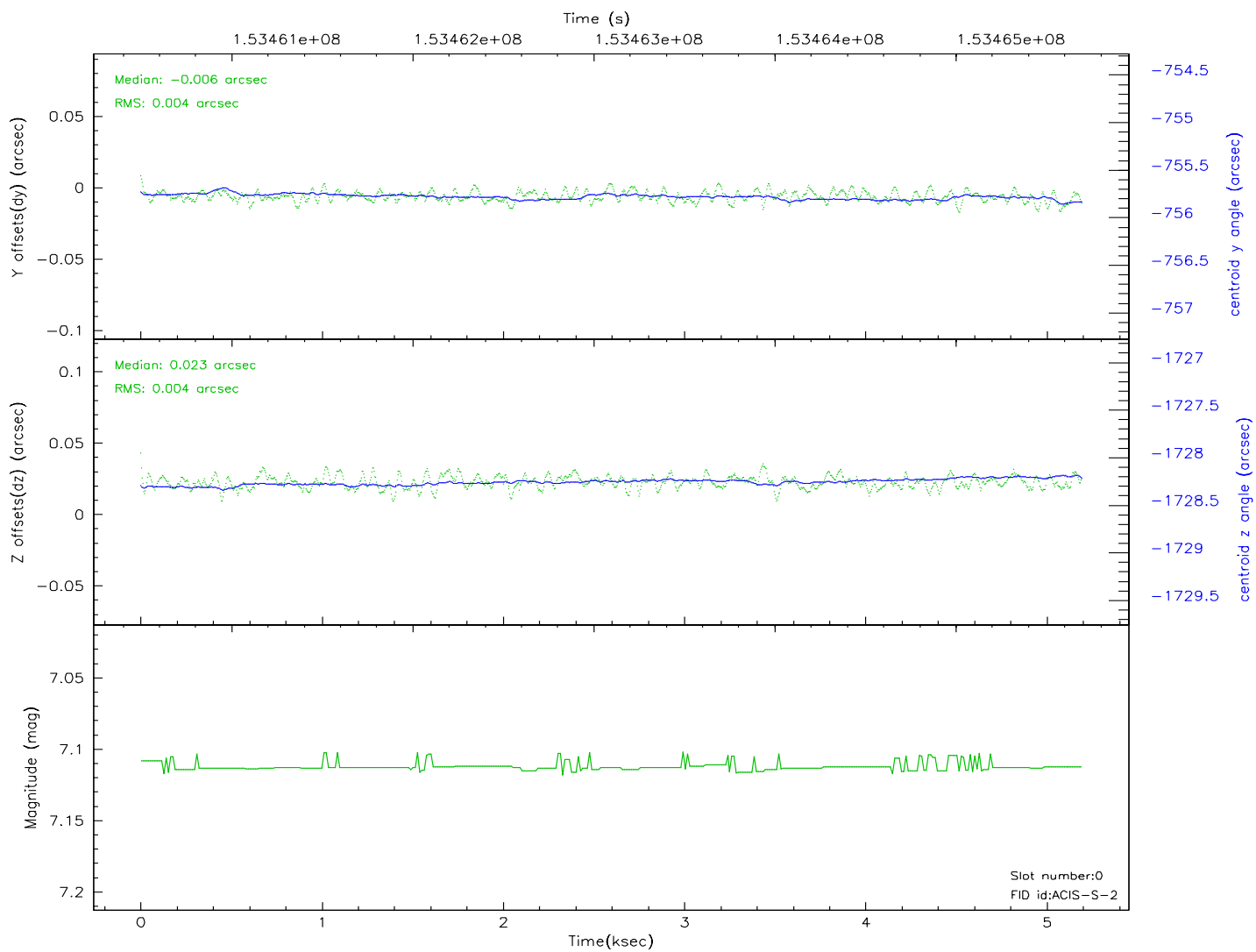
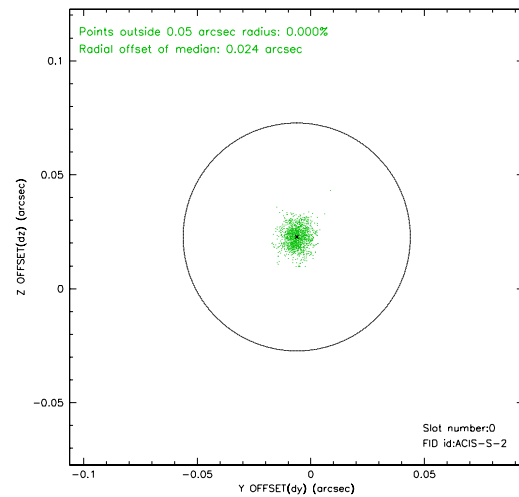
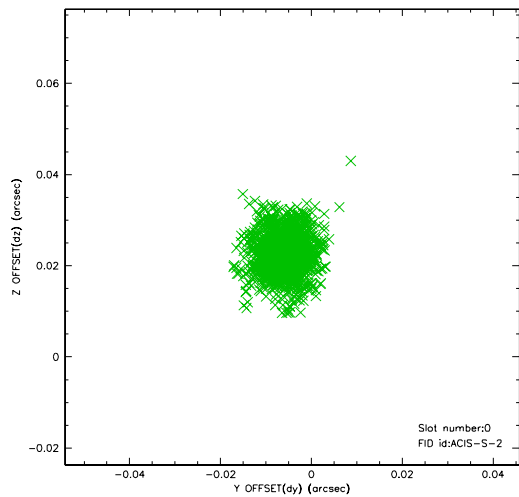


2.4.5 Slot 7

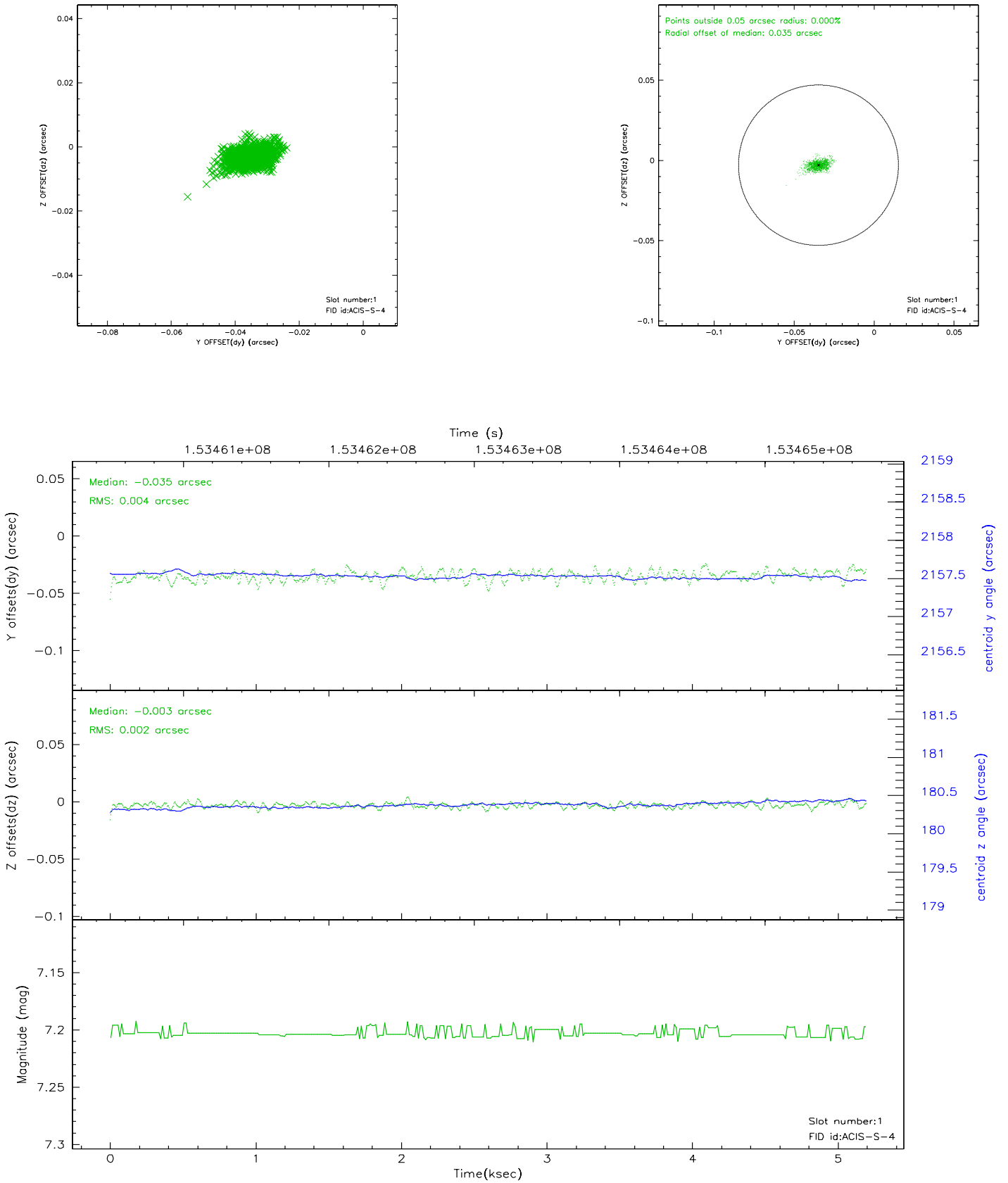


2.5 FID Slots

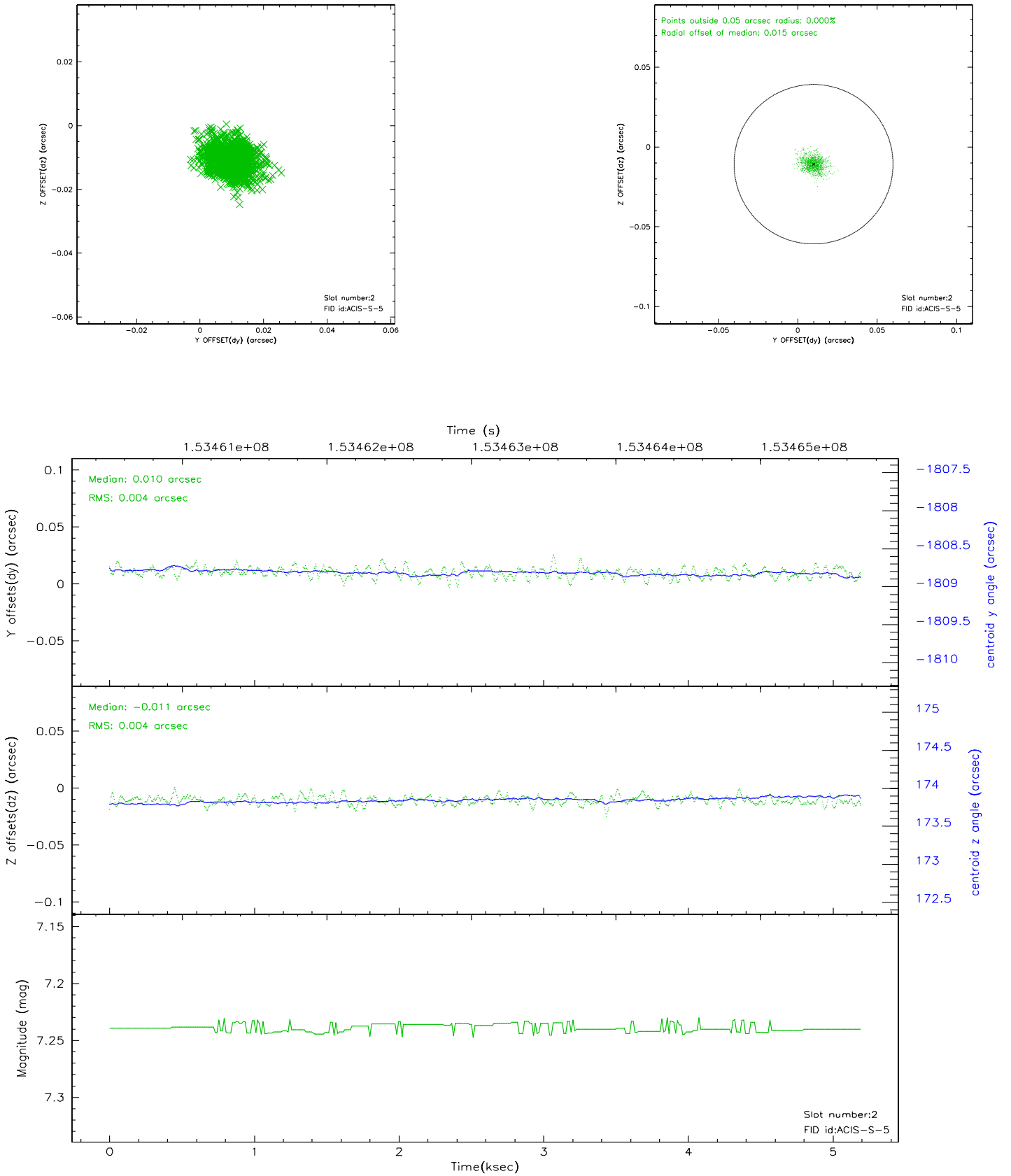
2.5.1 Slot 0



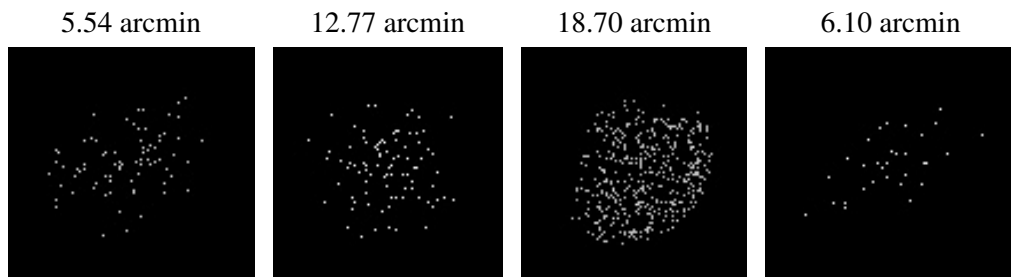
2.5.2 Slot 1



2.5.3 Slot 2



3 Point Sources



A Summary

A.1 Status

V&V Scientist	Jen Lauer
V&V Date (YYYY-MM-DD)	2006.10.10
V&V Edition	1
V&V Disposition and Status	OK
V&V Charge Time	4.723

A.2 Comments