

V&V Reference Report

L2 ASCDS Version : 7.6.9

Observation 3306 - L2 Version 001
Chandra X-Ray Center

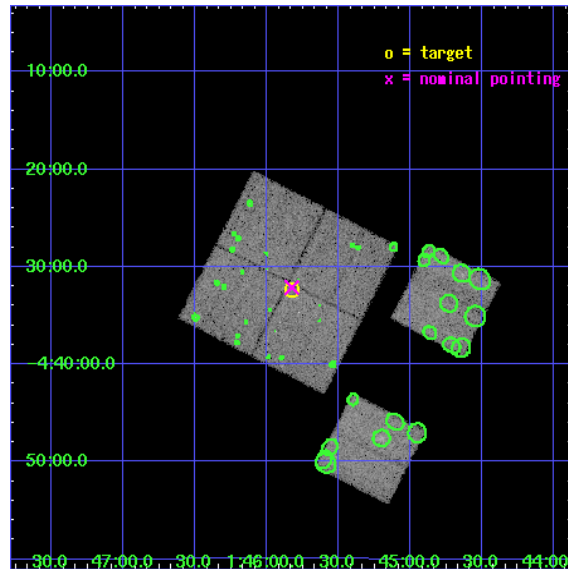
L2 Processing Date : Sep 20 2006

Contents

1	Front	2
2	OBI	3
2.1	OBI	3
2.1.1	Images	3
2.1.2	Bias	3
2.1.3	Parameters	4
2.1.4	Events	4
2.2	Compared Parameters	5
2.3	Aspect	6
2.4	Star Slots	9
2.4.1	Slot 3	9
2.4.2	Slot 4	10
2.4.3	Slot 5	11
2.4.4	Slot 6	12
2.4.5	Slot 7	13
2.5	FID Slots	14
2.5.1	Slot 0	14
2.5.2	Slot 1	15
2.5.3	Slot 2	16
3	Point Sources	17
A	Summary	18
A.1	Status	18
A.2	Comments	18

1 Front

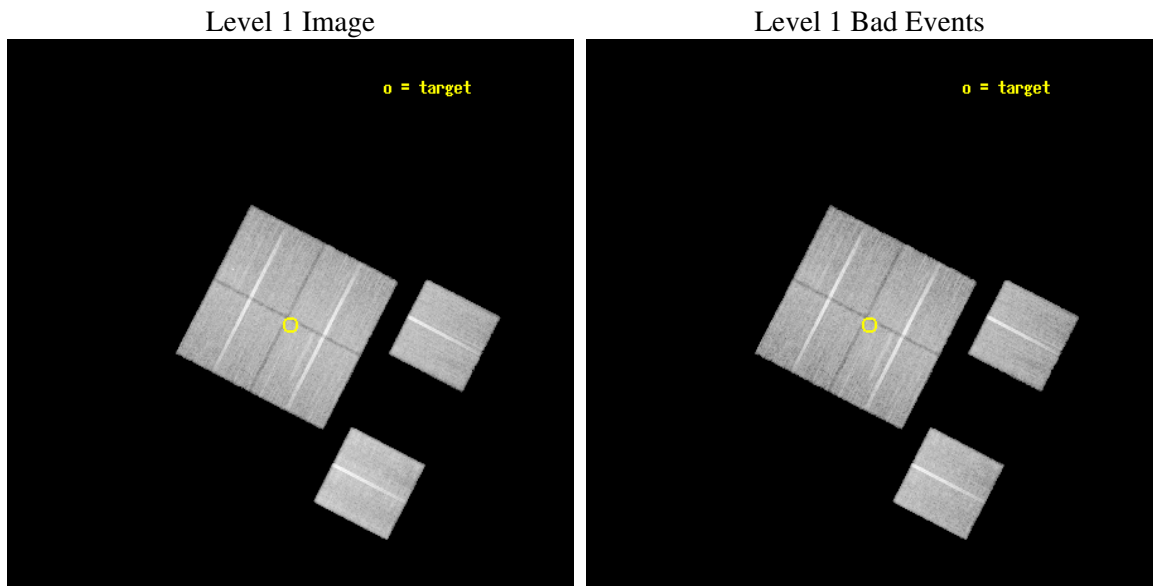
seq_num	900145
obs_id	3306
title	A COMBINED CHANDRA/XMM ATTACK ON THE ASTROPHYSICS OF THE HARD X-RAY BACKGROUND.
observer	Prof Ian McHardy
object	XMM 1HR - FIELD 1
dtcycle	0
cycle	P
ra_targ	26.4568
dec_targ	-4.540073
ra_nom	26.456466655207
dec_nom	-4.5354300642621
roll_nom	117.2086579164
revision	2
ontime	28230.399894834
livetime	27872.929573059
ontime0	28230.399894834
ontime1	28227.158934563
ontime2	28230.399894834
ontime3	28230.399894834
ontime6	28230.399894834
ontime8	28230.399894834
l2events	132036



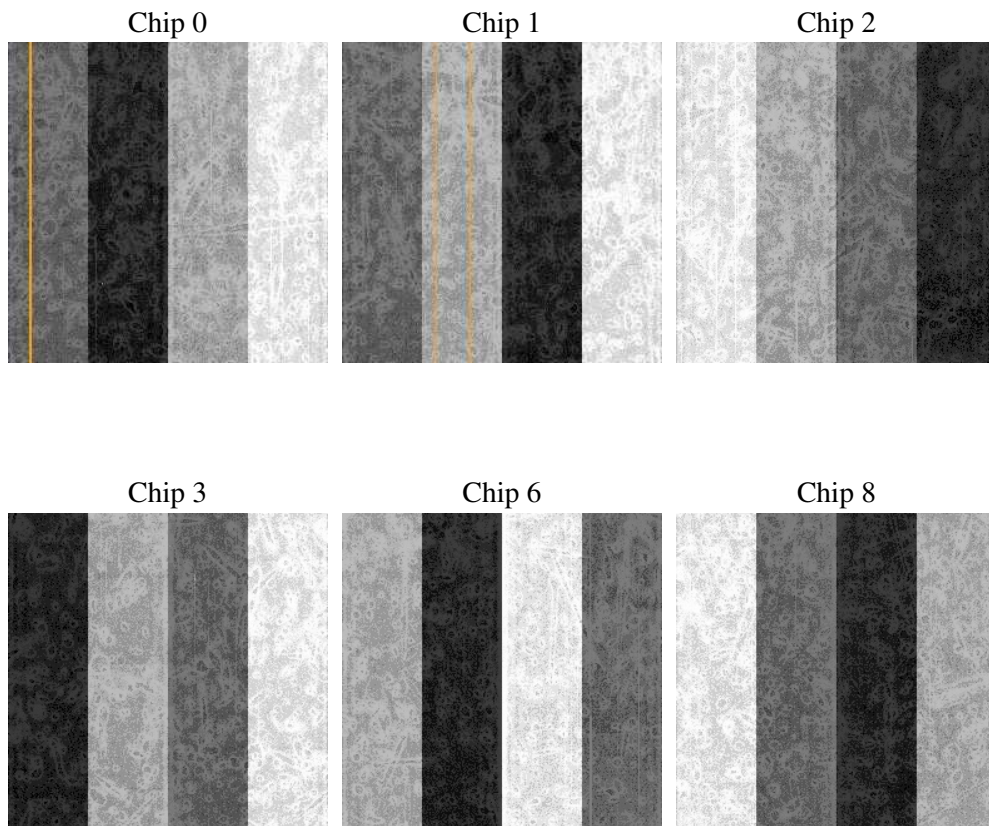
2 OBI

2.1 OBI

2.1.1 Images



2.1.2 Bias



2.1.3 Parameters

obi_num	0
ascdsver	7.6.9
caldsver	3.2.3
date	2006-09-21T01:03:14
revision	2

sched_exp_time	28121.377000
ontime	28248.548877597
ontime0	28248.548877597
ontime1	28245.307917327
ontime2	28248.548877597
ontime3	28248.548877597
ontime6	28248.548877597
ontime8	28248.548877597
l1events	1167614

2.1.4 Events

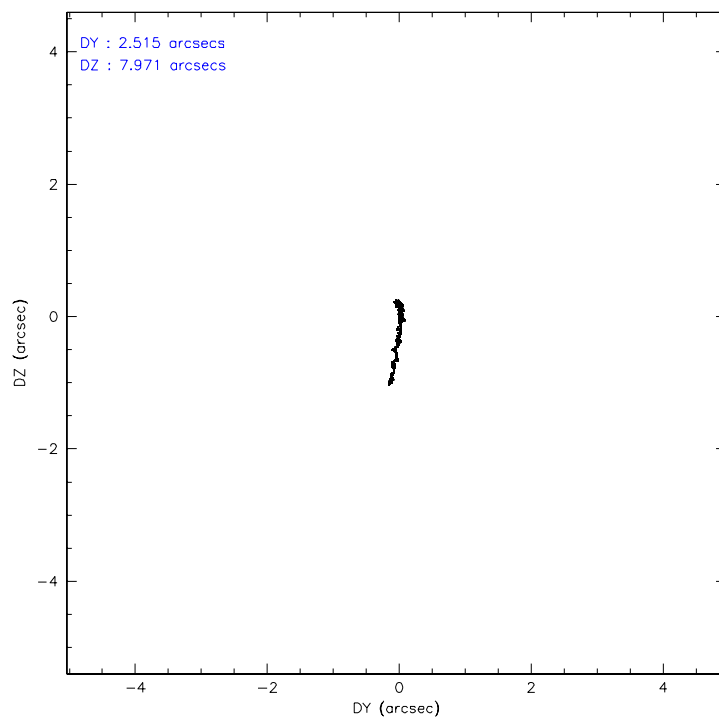
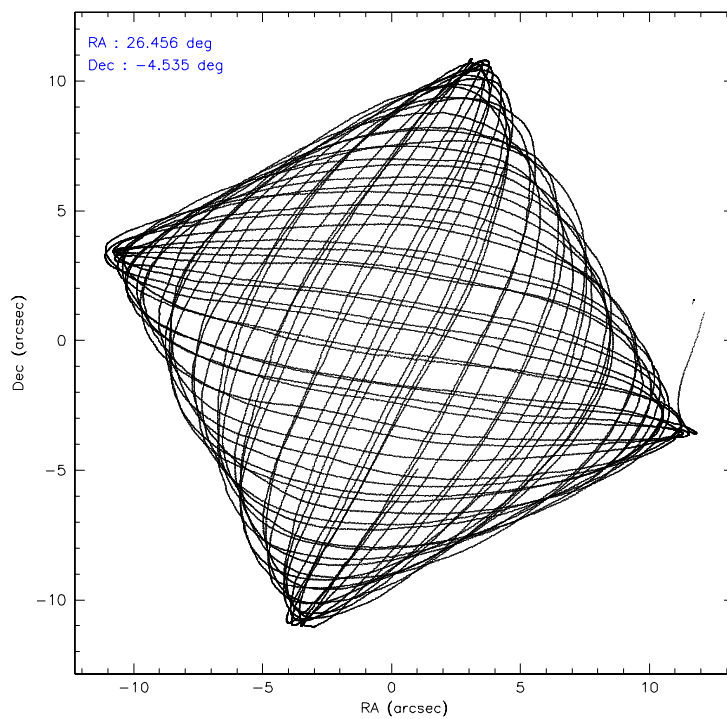
	ccd 0	ccd 1	ccd 2	ccd 3	ccd 6	ccd 8
level 1 events	174615	175287	186984	188644	192738	249346
rejected events	149959	149958	163304	164740	167182	197421
rejected %	85%	85%	87%	87%	86%	79%

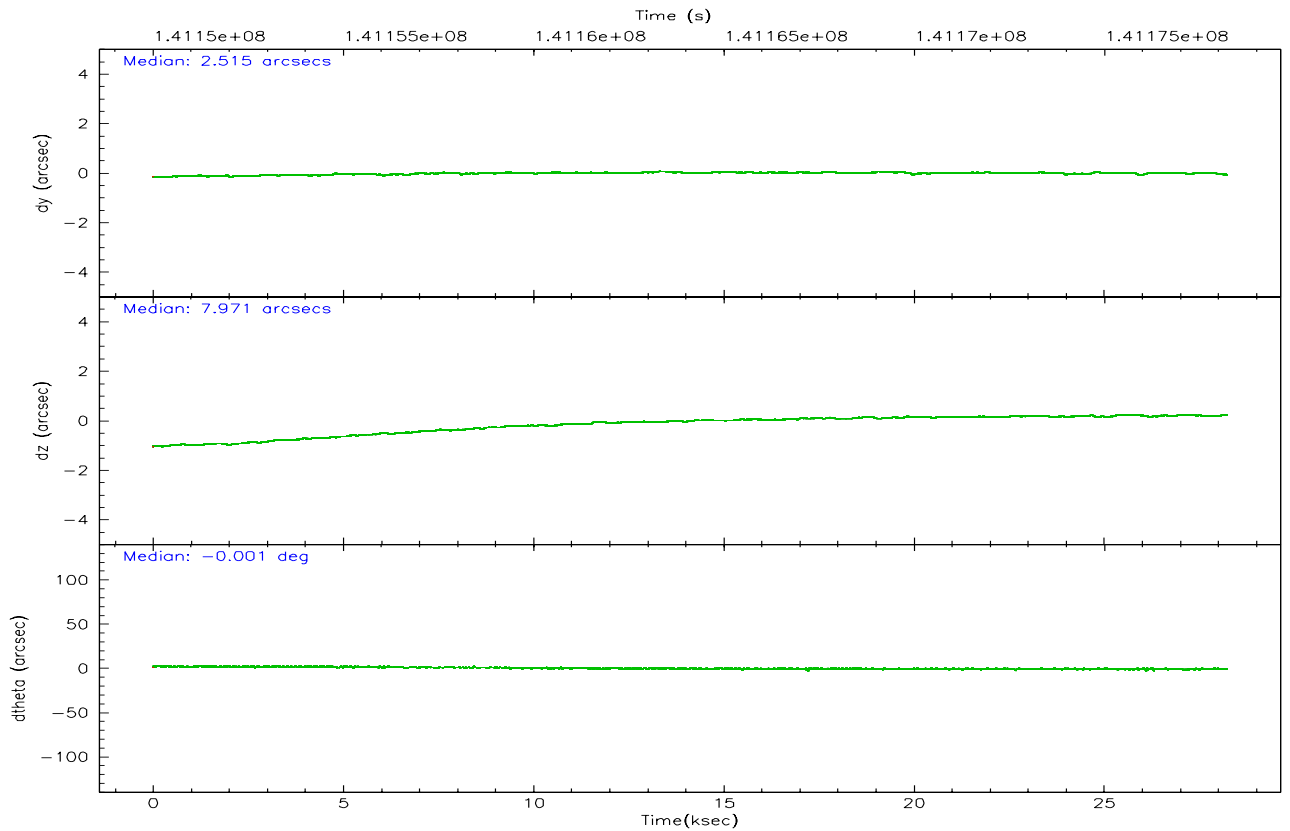
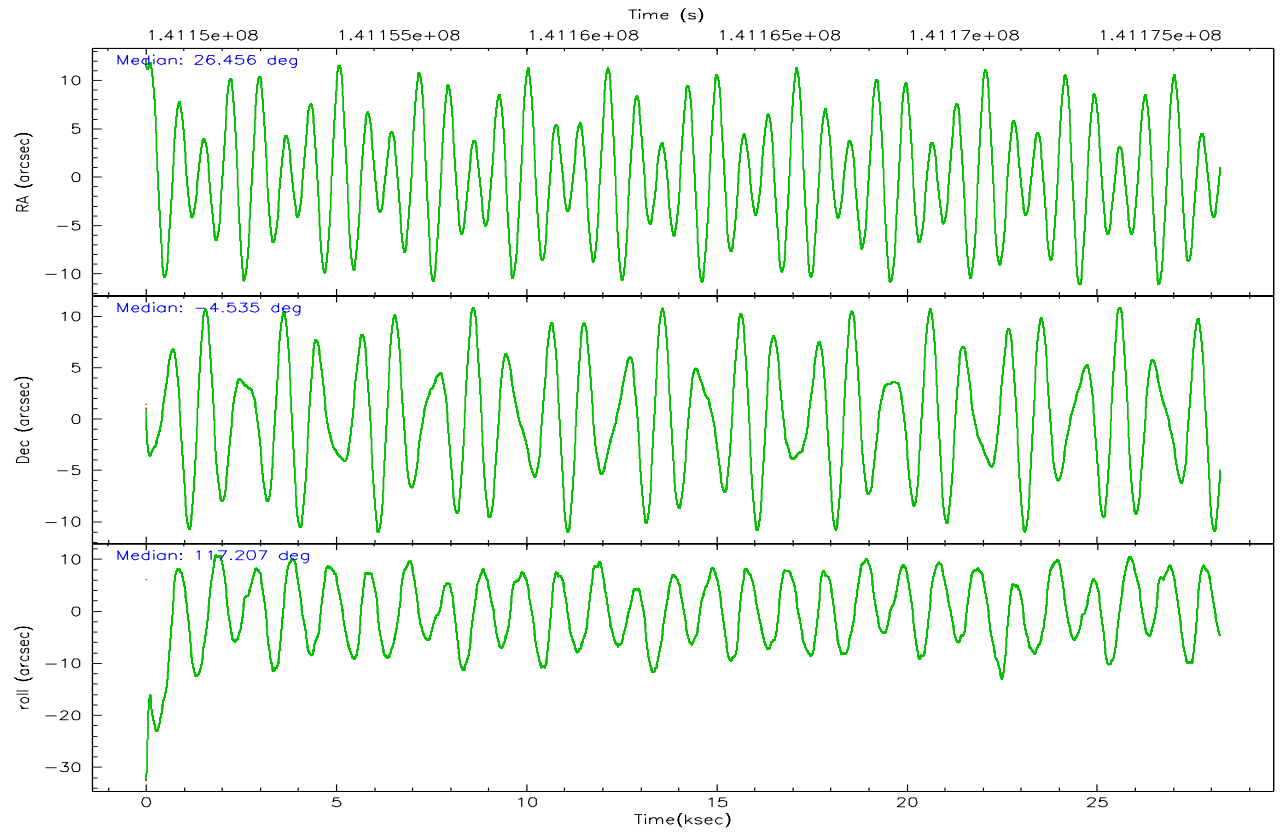
	ccd 0	ccd 1	ccd 2	ccd 3	ccd 6	ccd 8
grade 0 events	11356	11141	11098	11063	12073	18383
	6%	6%	5%	5%	6%	7%
grade 1 events	90	91	96	110	103	164
	0%	0%	0%	0%	0%	0%
grade 2 events	5057	5163	4866	4683	4752	10893
	2%	2%	2%	2%	2%	4%
grade 3 events	2267	2350	1921	2163	2248	5254
	1%	1%	1%	1%	1%	2%
grade 4 events	2001	2261	1997	2047	2092	4840
	1%	1%	1%	1%	1%	1%
grade 5 events	7031	7694	6510	7540	7974	10737
	4%	4%	3%	3%	4%	4%
grade 6 events	3992	4429	3816	3965	4407	12573
	2%	2%	2%	2%	2%	5%
grade 7 events	142821	142158	156680	157073	159089	186502
	81%	81%	83%	83%	82%	74%

2.2 Compared Parameters

Parameter	Planned	Actual	Parameter	Planned	Actual
Instrument	ACIS	ACIS	Obspar format version number	6	6
Detector	ACIS-012368	ACIS-012368	Obspar file type	PREDICTED	ACTUAL
Grating	NONE	NONE	Obspar update status	NONE	UPDATED
Data mode	VFAINT	VFAINT	Number of optional ACIS chips dropped	0	0
Observation mode	POINTING	POINTING	On-chip summing requested	N	N
Pointing RA	26.479604	26.45646665520708	Subarray requested	NONE	NONE
Pointing Dec	-4.550183	-4.535430064262058	Alternating exposures requested	N	N
Pointing Roll	117.001806	117.208657916398	Primary exposure time	0.000000	3.2
SIM focus pos (mm)	-0.782348	-0.7809083437167272			
SIM defocus (mm)	0	0.001439871863259334			
SIM translation stage pos (mm)	-233.592463	-233.5874344608287			
SIM translation stage offset (mm)	0	-0.005018542100998502			
Observation start time	141150109.184000	141149072.80447			
Observation start date	2002-06-22T16:20:45	2002-06-22T16:04:32			
Observation end time	141178231.184000	141178545.14318			
Observation end date	2002-06-23T00:09:27	2002-06-23T00:15:45			
Read mode	TIMED	TIMED			

2.3 Aspect



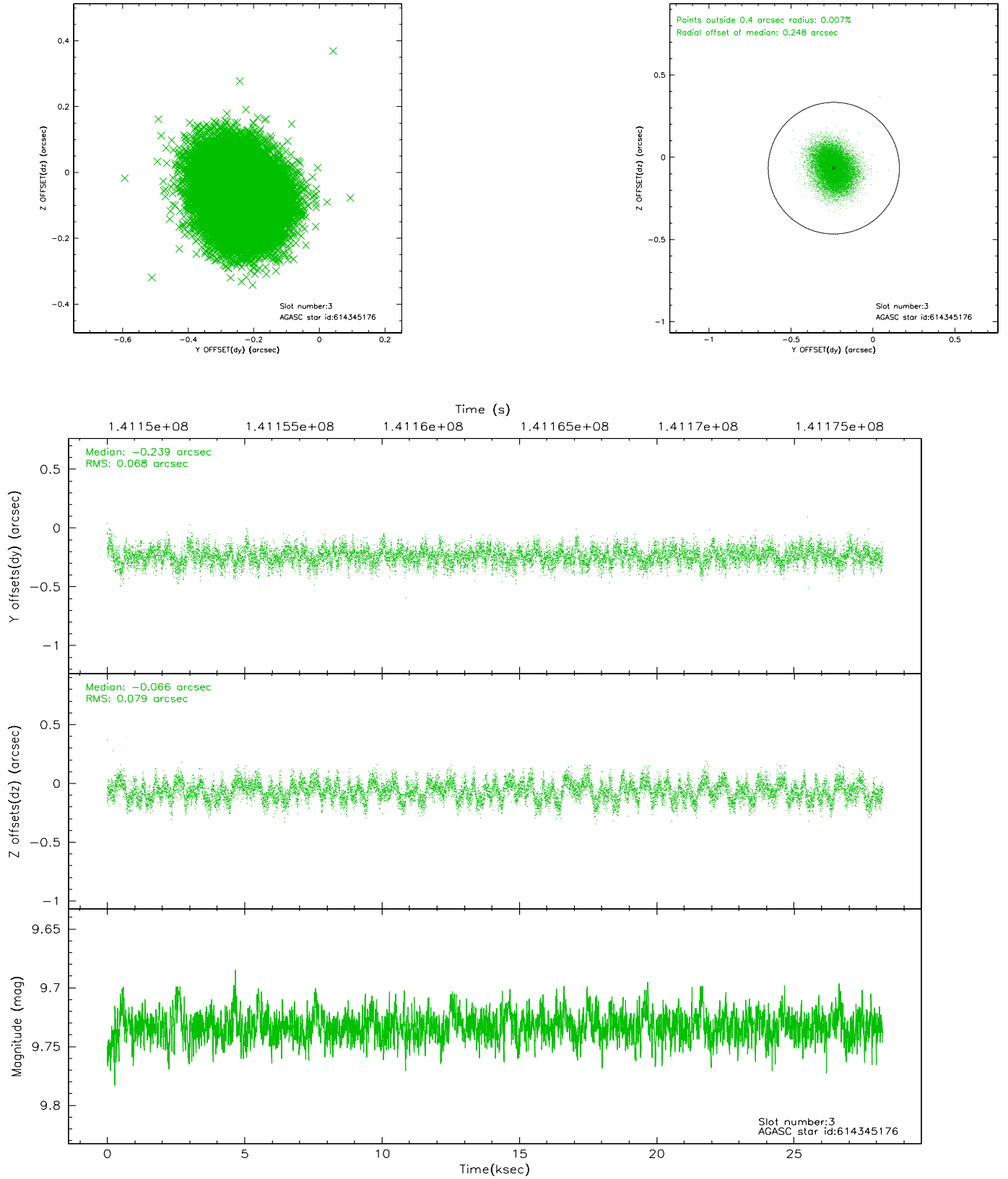


Slot Statistics

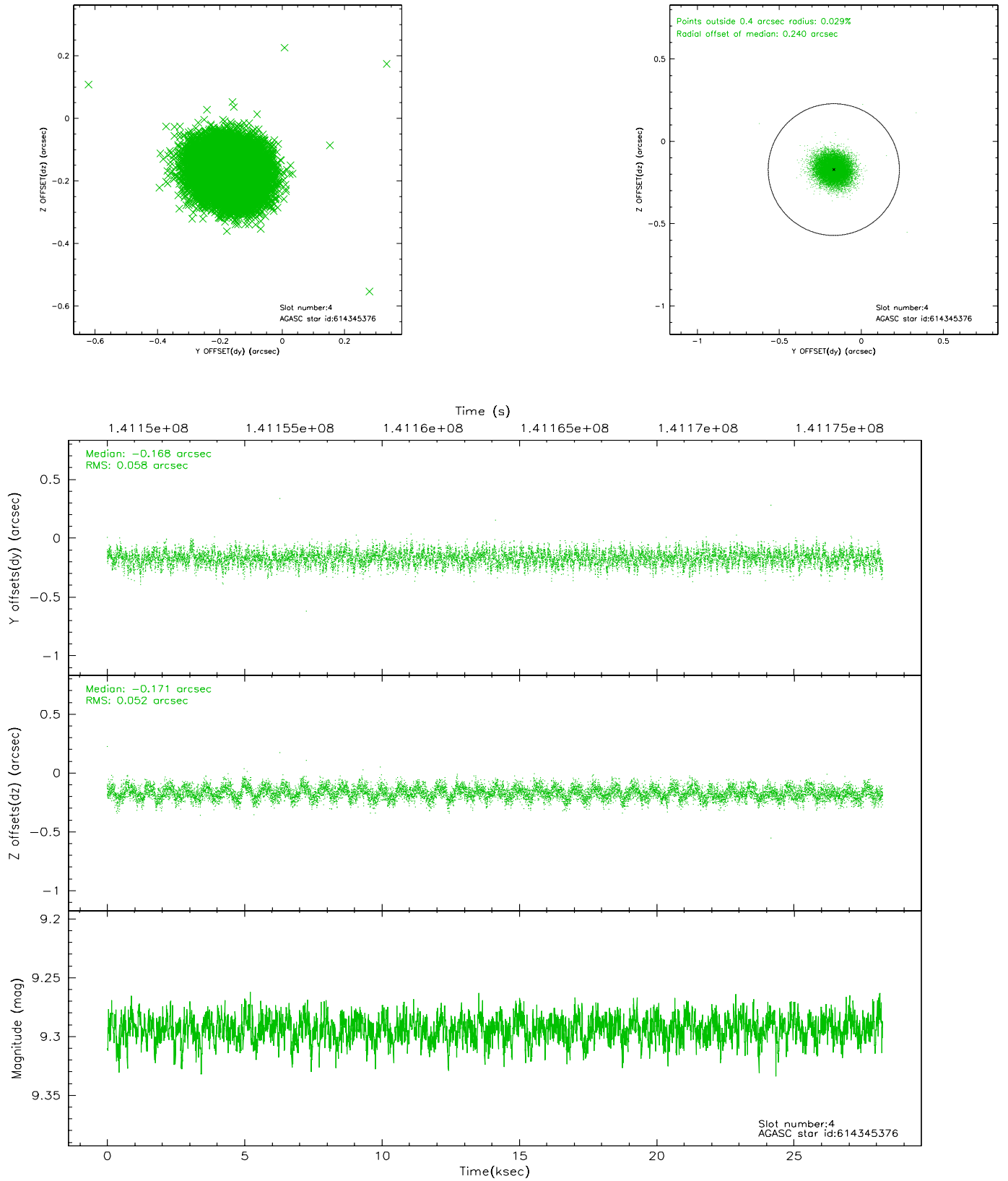
slot	status	id	mag	n_pts	med_dy	med_dz	dr1	dr2	ra	dec	mean_y	mean_z
0	FID	ACIS-I-1	7.24	6888	-0.040	0.082	0.018	0.041	0.000000	0.000000	937.25	-831.16
1	FID	ACIS-I-5	7.24	6886	-0.013	0.032	0.010	0.016	0.000000	0.000000	-1810.75	1066.28
2	FID	ACIS-I-6	7.26	6888	-0.039	-0.042	0.012	0.027	0.000000	0.000000	402.74	1710.78
3	GUIDE	614345176	9.73	13770	-0.239	-0.066	0.113	0.176	25.877982	-4.292809	1804.04	1503.69
4	GUIDE	614345376	9.29	13763	-0.168	-0.171	0.083	0.131	25.702118	-4.344424	1924.71	2150.87
5	GUIDE	614479384	9.41	13772	0.246	-0.083	0.117	0.182	26.458684	-5.277867	-2300.79	1256.03
6	GUIDE	614480960	10.20	13733	0.026	0.358	0.169	0.285	27.041824	-4.322525	-187.96	-2169.77
7	GUIDE	614480816	10.49	13743	0.138	-0.040	0.171	0.277	26.301496	-5.028963	-1246.79	1351.25

2.4 Star Slots

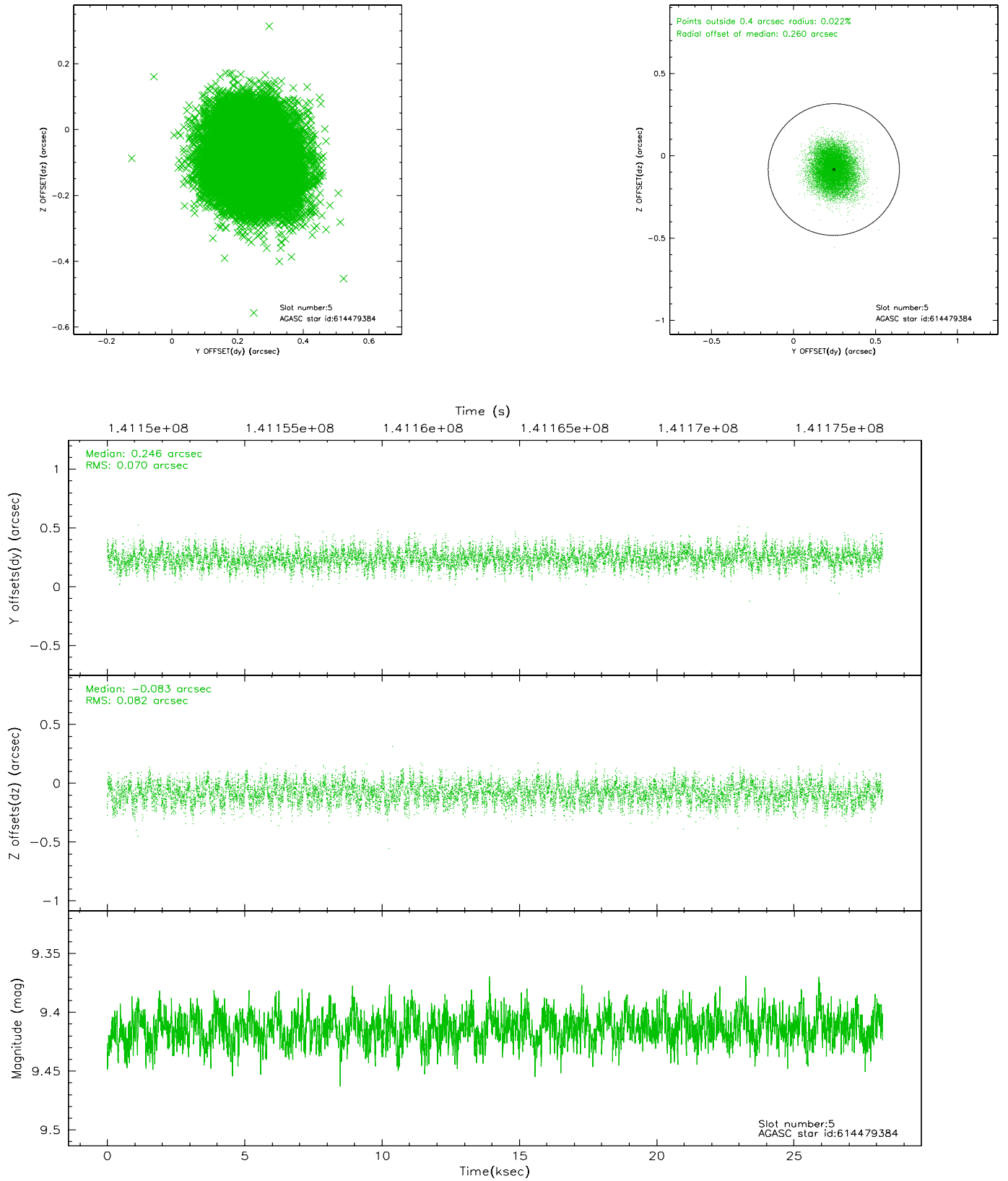
2.4.1 Slot 3



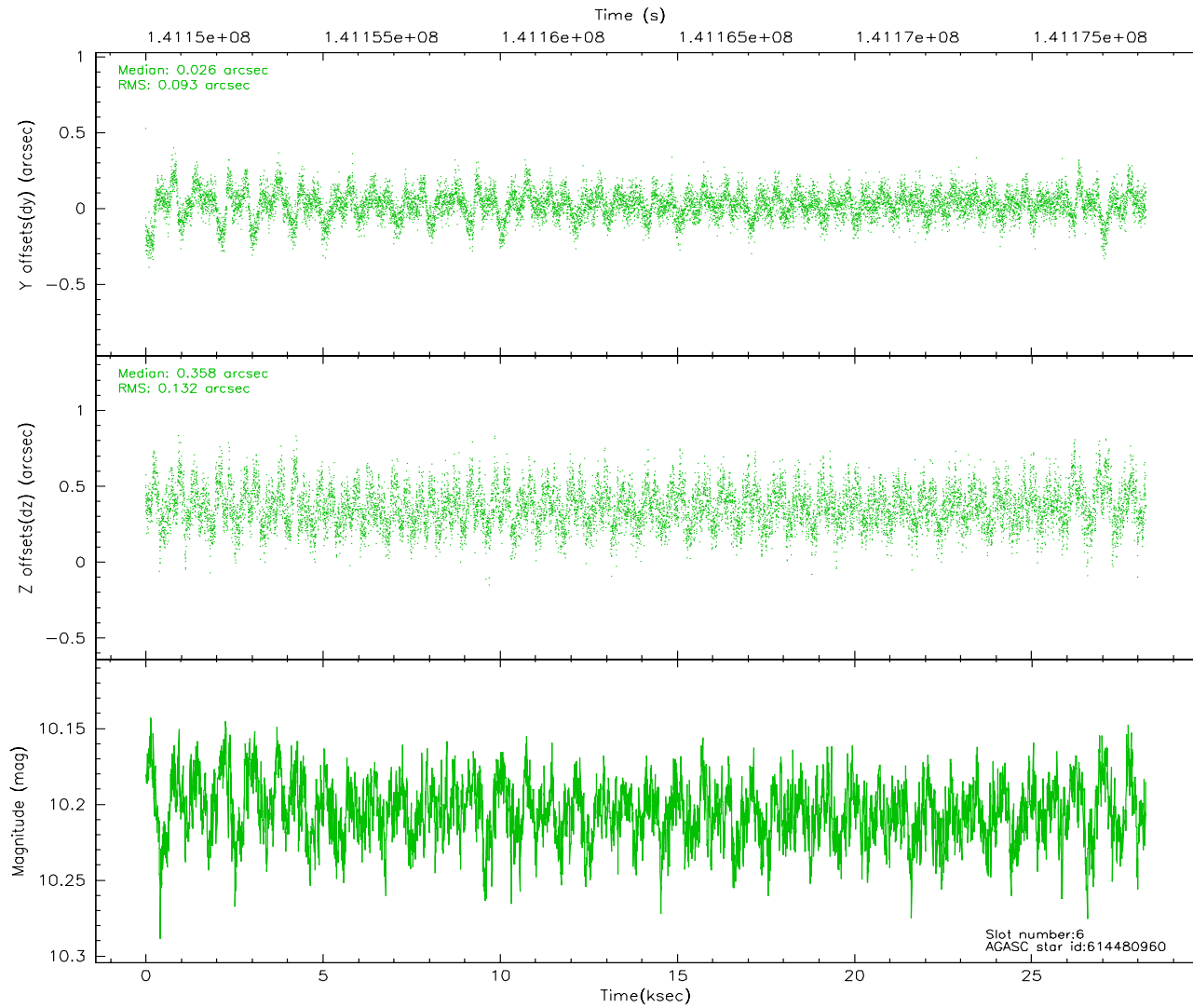
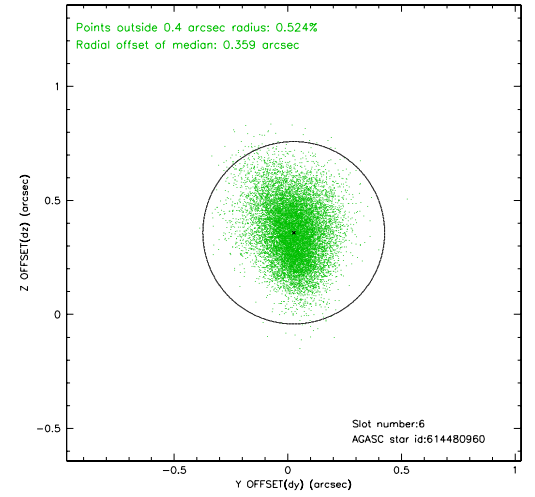
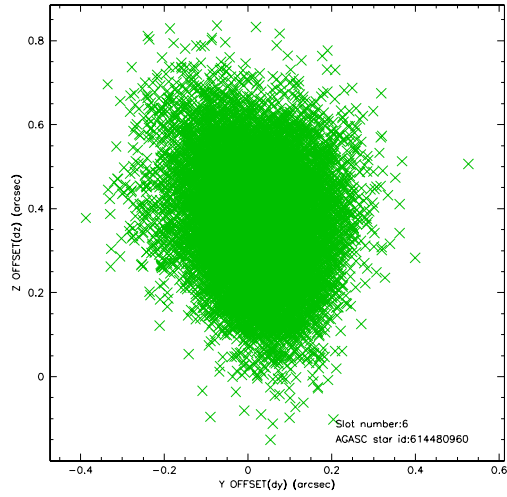
2.4.2 Slot 4



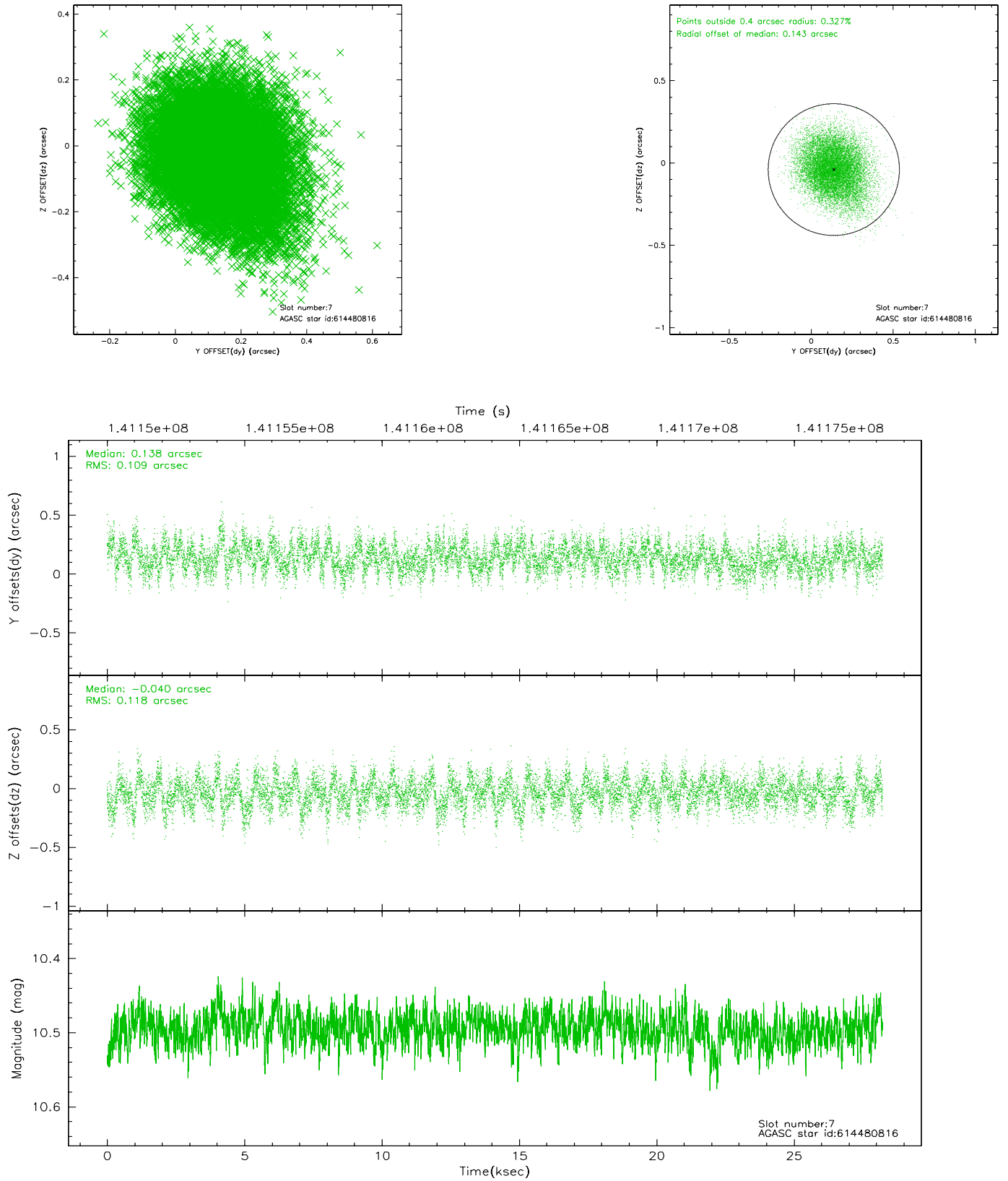
2.4.3 Slot 5



2.4.4 Slot 6

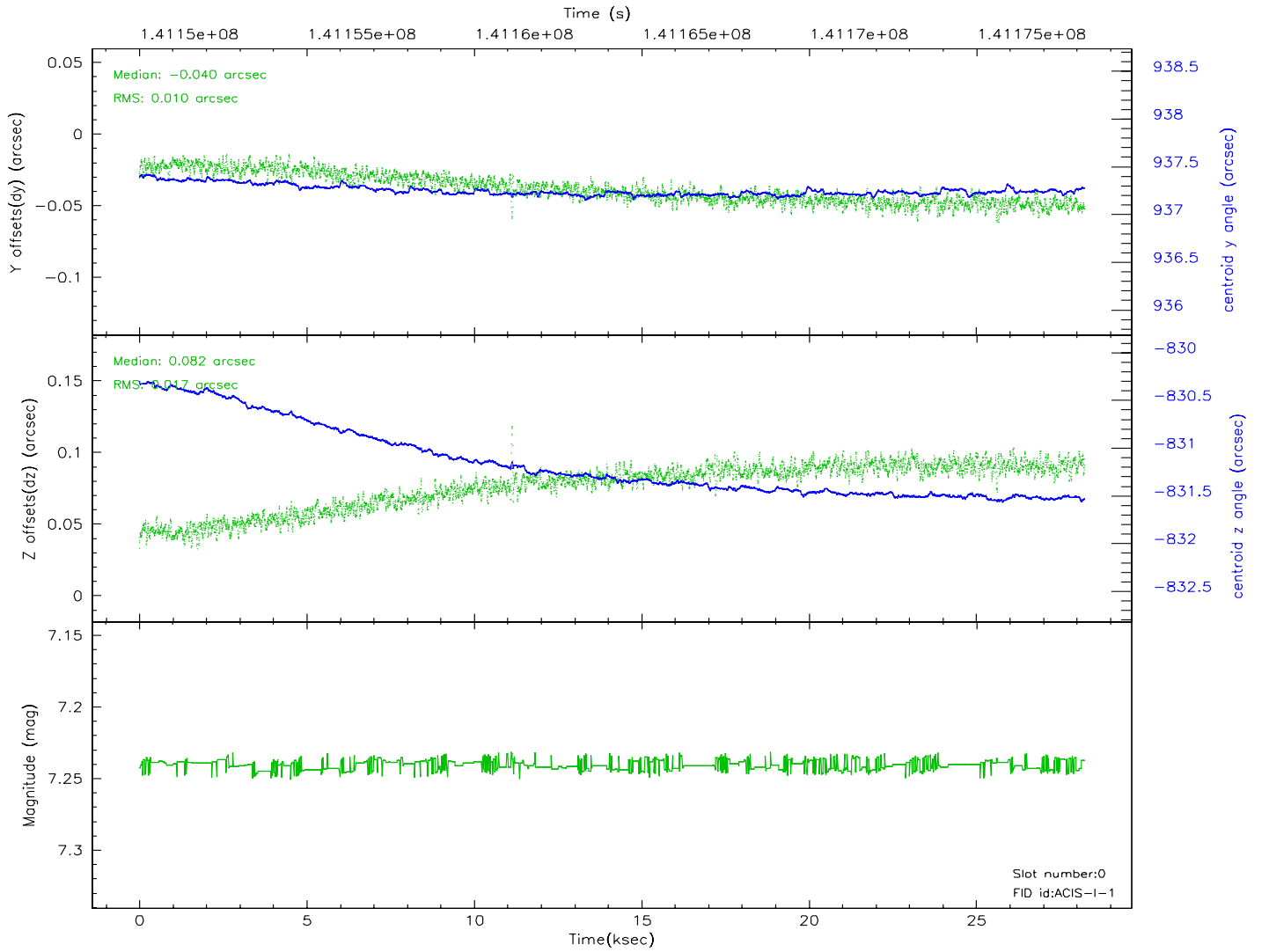
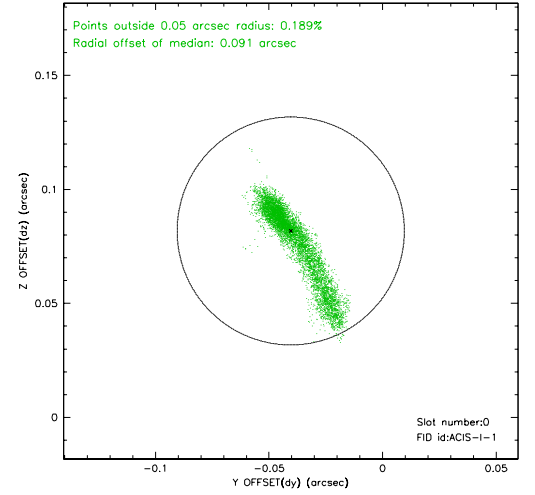
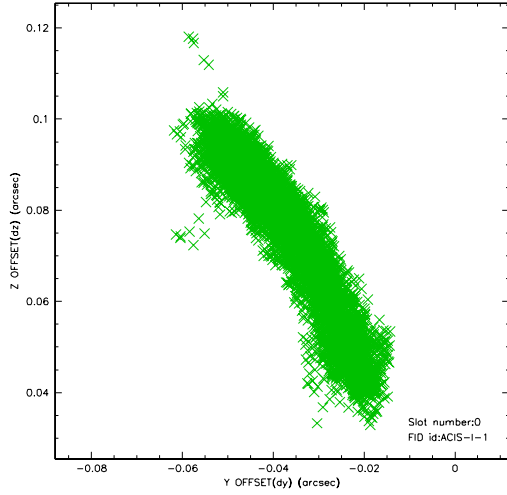


2.4.5 Slot 7

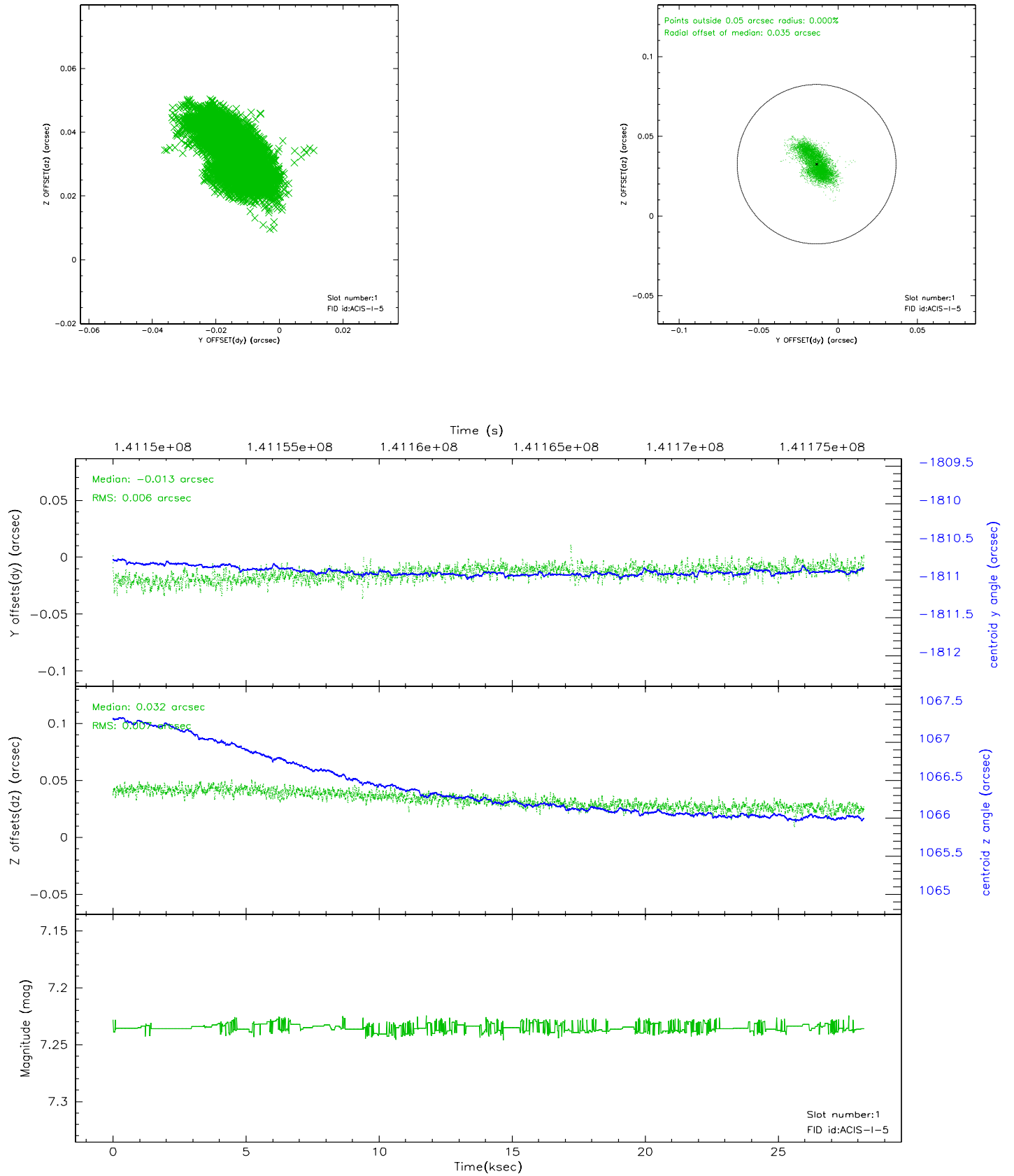


2.5 FID Slots

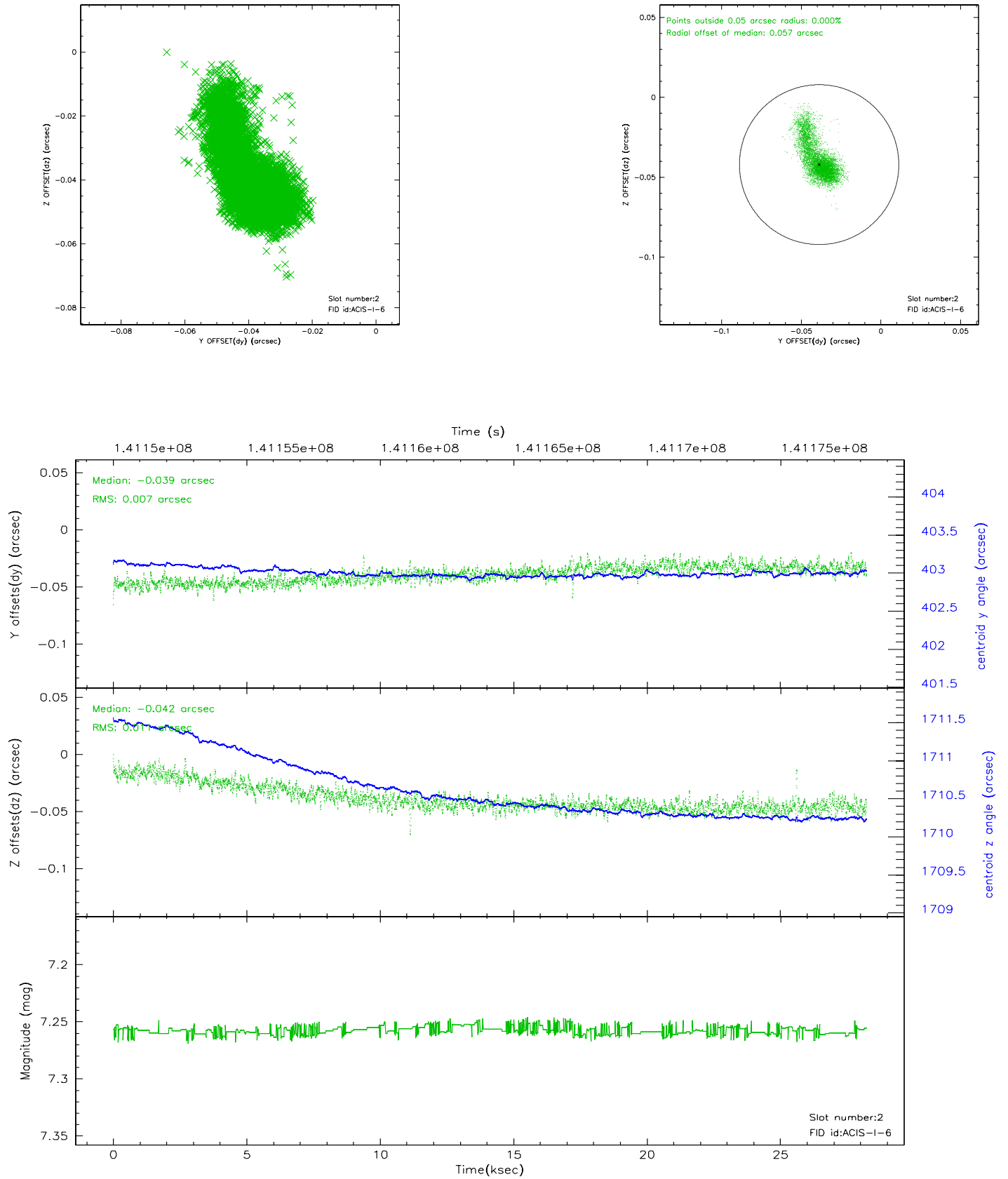
2.5.1 Slot 0



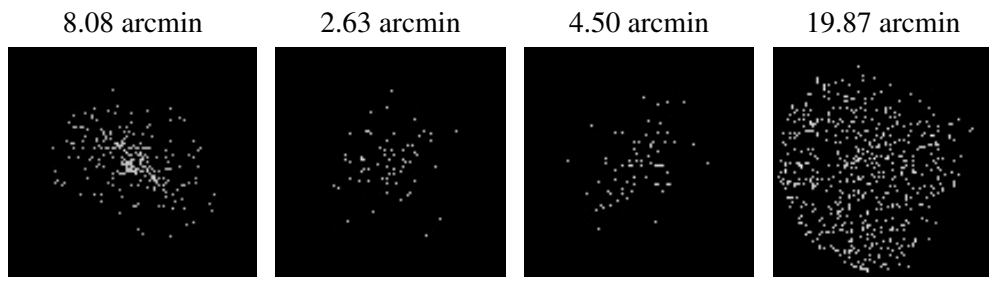
2.5.2 Slot 1



2.5.3 Slot 2



3 Point Sources



A Summary

A.1 Status

V&V Scientist	Jen Lauer
V&V Date (YYYY-MM-DD)	2006.09.21
V&V Edition	1
V&V Disposition and Status	OK
V&V Charge Time	28.227

A.2 Comments