

V&V Reference Report

L2 ASCDS Version : 8.4.5

Observation 3288 - L2 Version 3
Chandra X-Ray Center

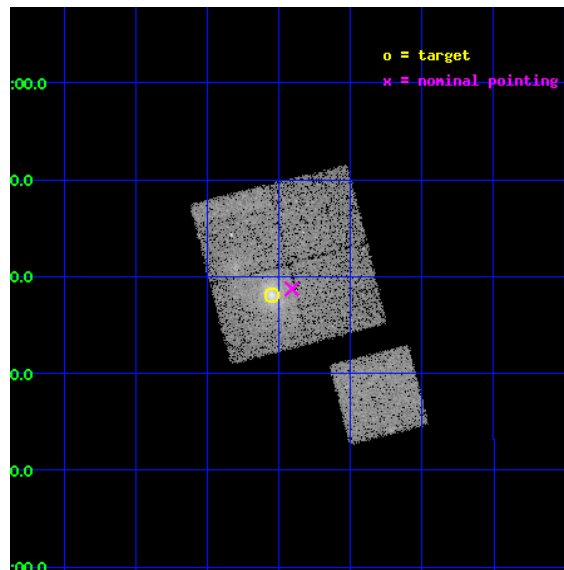
L2 Processing Date : Oct 13 2012

Contents

1	Front	2
2	OBI	3
2.1	OBI	3
2.1.1	Images	3
2.1.2	Bias	3
2.1.3	Parameters	4
2.1.4	Events	4
2.2	Compared Parameters	5
2.3	Aspect	6
2.4	Star Slots	9
2.4.1	Slot 3	9
2.4.2	Slot 4	10
2.4.3	Slot 5	11
2.4.4	Slot 6	12
2.4.5	Slot 7	13
2.5	FID Slots	14
2.5.1	Slot 0	14
2.5.2	Slot 1	15
2.5.3	Slot 2	16
A	Summary	17
A.1	Status	17
A.2	Comments	17

1 Front

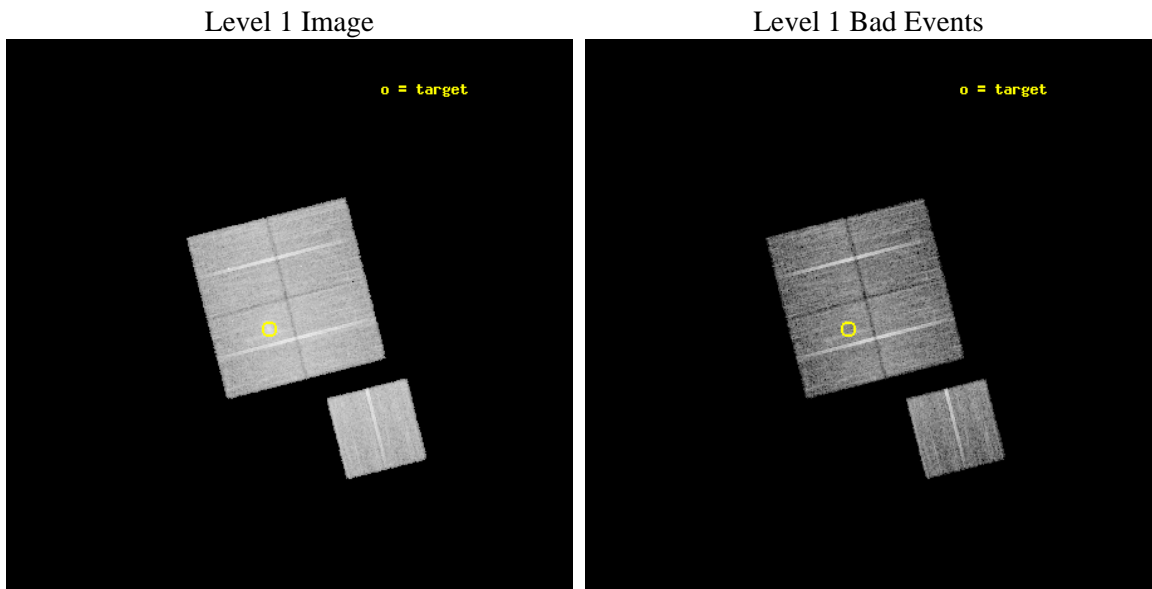
seq_num	800288	Sequence number
obs_id	3288	Observation id
title	MACS: THE X-RAY PROPERTIES OF THE MOST MASSIVE GALAXY CLUSTERS AT Z>0.3	Proposal title
observer	Dr. Harald Ebeling	Principal investigator
object	MACSJ2311.5+0338	Source name
dtcycle	0	
cycle	P	events from which exps? Prim/Second/Both
ra_targ	347.88875	Observer's specified target RA [deg]
dec_targ	3.634444	Observer's specified target Dec [deg]
ra_nom	347.85271492563	Nominal RA [deg]
dec_nom	3.6455978972498	Nominal Dec [deg]
roll_nom	165.71093268762	Nominal Roll [deg]
revision	3	Processing version of data
ontime	13770.199973494	Sum of GTIs [s]
livetime	13590.282173366	Livetime [s]
ontime0	13770.199973494	Sum of GTIs [s]
ontime1	13770.199973494	Sum of GTIs [s]
ontime2	13767.05899325	Sum of GTIs [s]
ontime3	13770.199973494	Sum of GTIs [s]
ontime6	13770.199973494	Sum of GTIs [s]
l2events	56811	Number of level 2 events



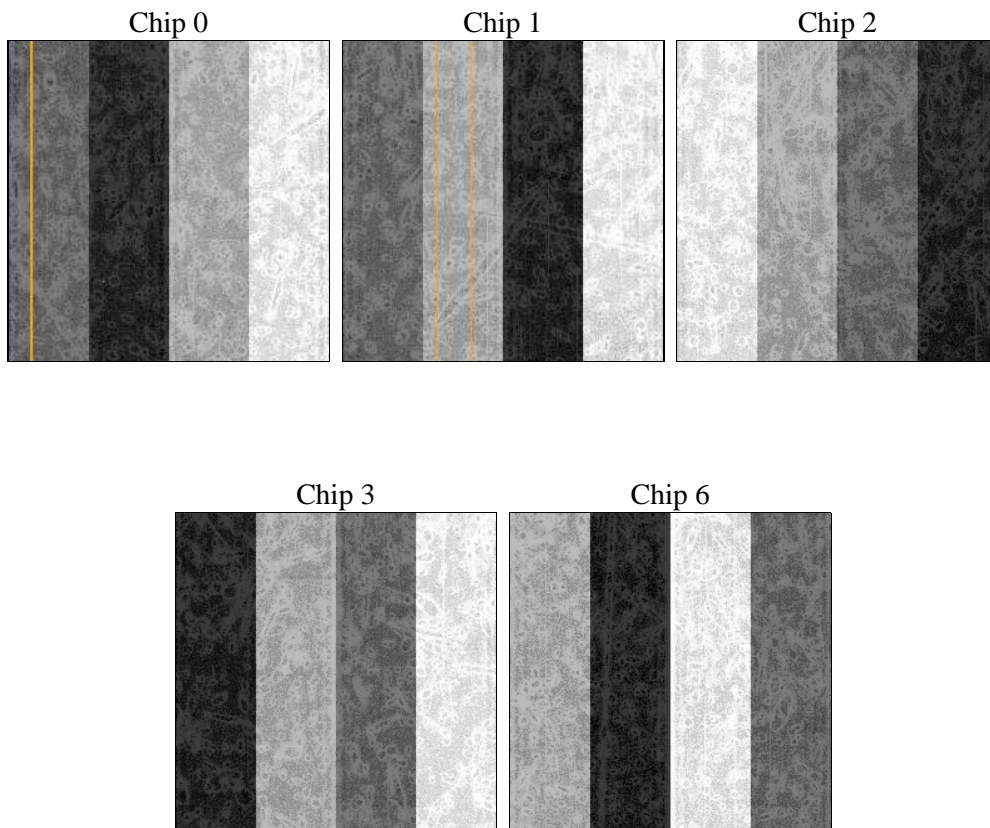
2 OBI

2.1 OBI

2.1.1 Images



2.1.2 Bias



2.1.3 Parameters

obi_num	0	Obi number	sched_exp_time	14000.000000	[s] Scheduled observation exposure time
ascdsver	8.4.5	Processing system revision	ontime	13770.199973494	Sum of GTIs [s]
caldsver	4.5.2	 	ontime0	13770.199973494	Sum of GTIs [s]
date	2012-10-13T06:00:53	Date and time of file creation	ontime1	13770.199973494	Sum of GTIs [s]
revision	3	Processing version of data	ontime2	13767.05899325	Sum of GTIs [s]
			ontime3	13770.199973494	Sum of GTIs [s]
			ontime6	13770.199973494	Sum of GTIs [s]
			l1events	437239	Number of level 1 events

2.1.4 Events

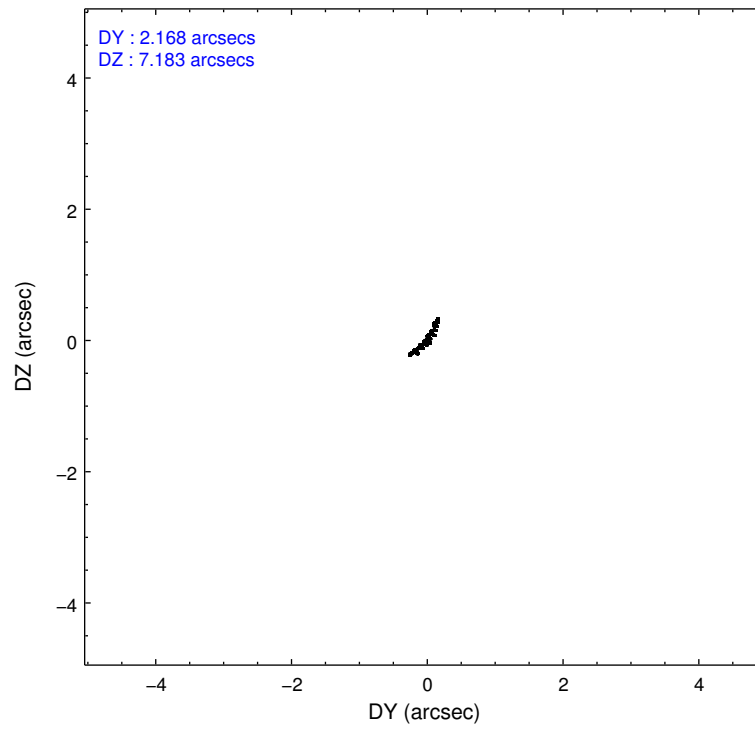
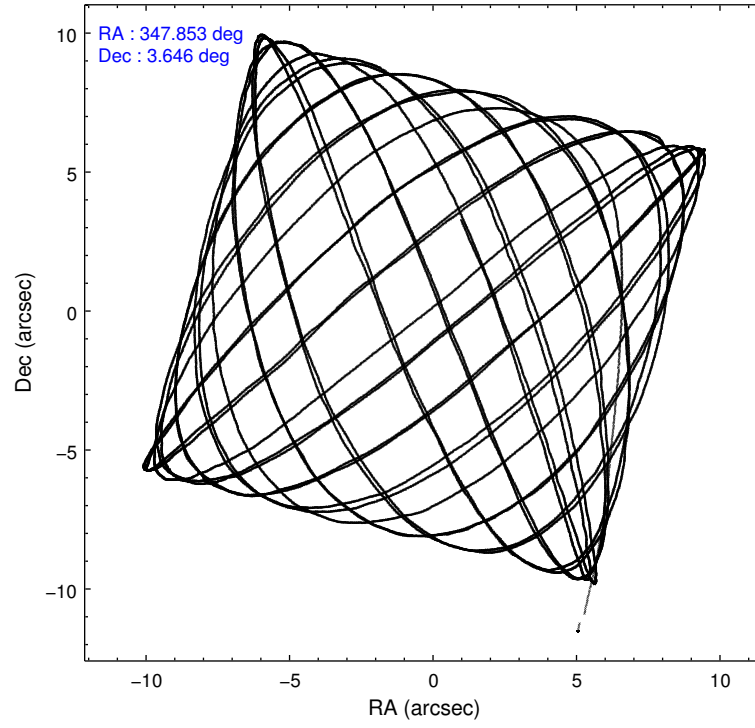
	ccd 0	ccd 1	ccd 2	ccd 3	ccd 6
level 1 events	75748	83523	91935	93602	92431
rejected events	64401	70121	79135	76456	77827
rejected %	85%	83%	86%	81%	84%

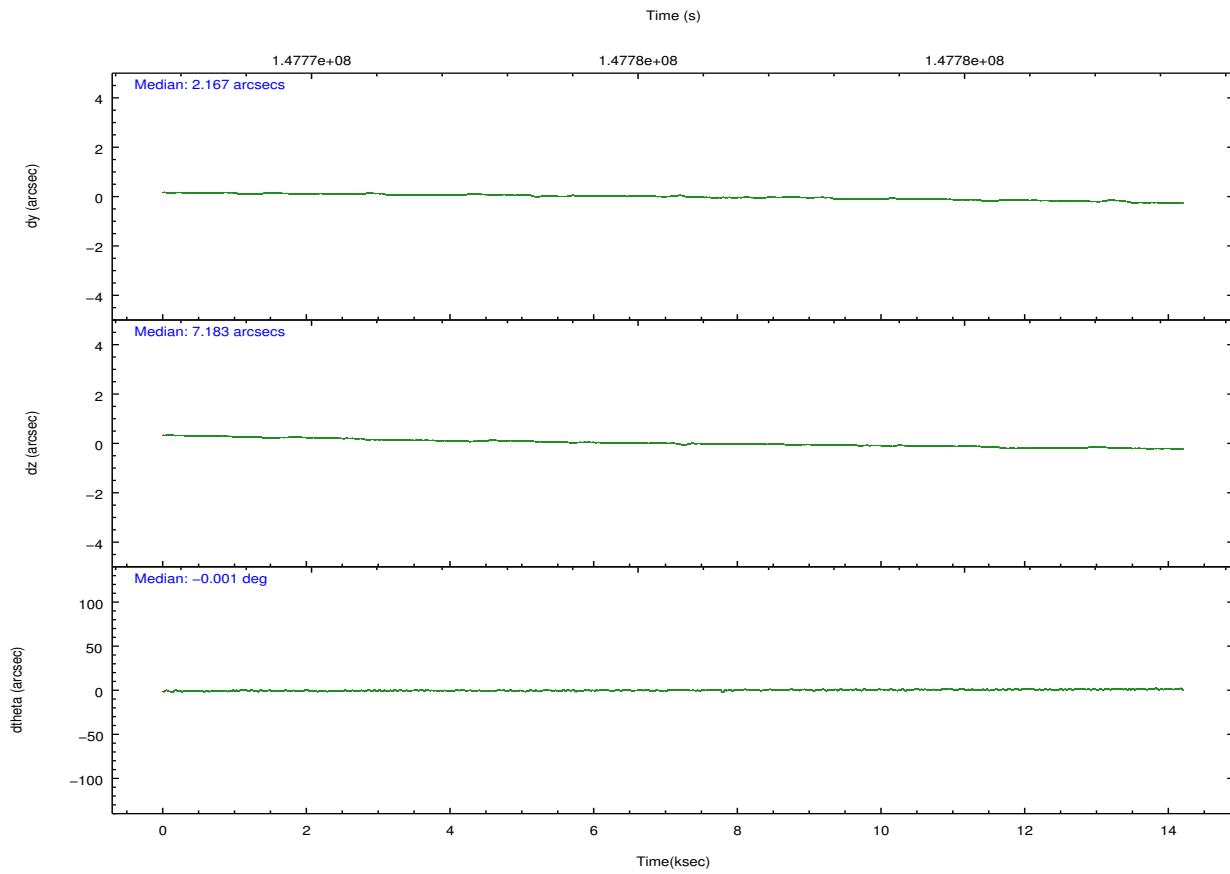
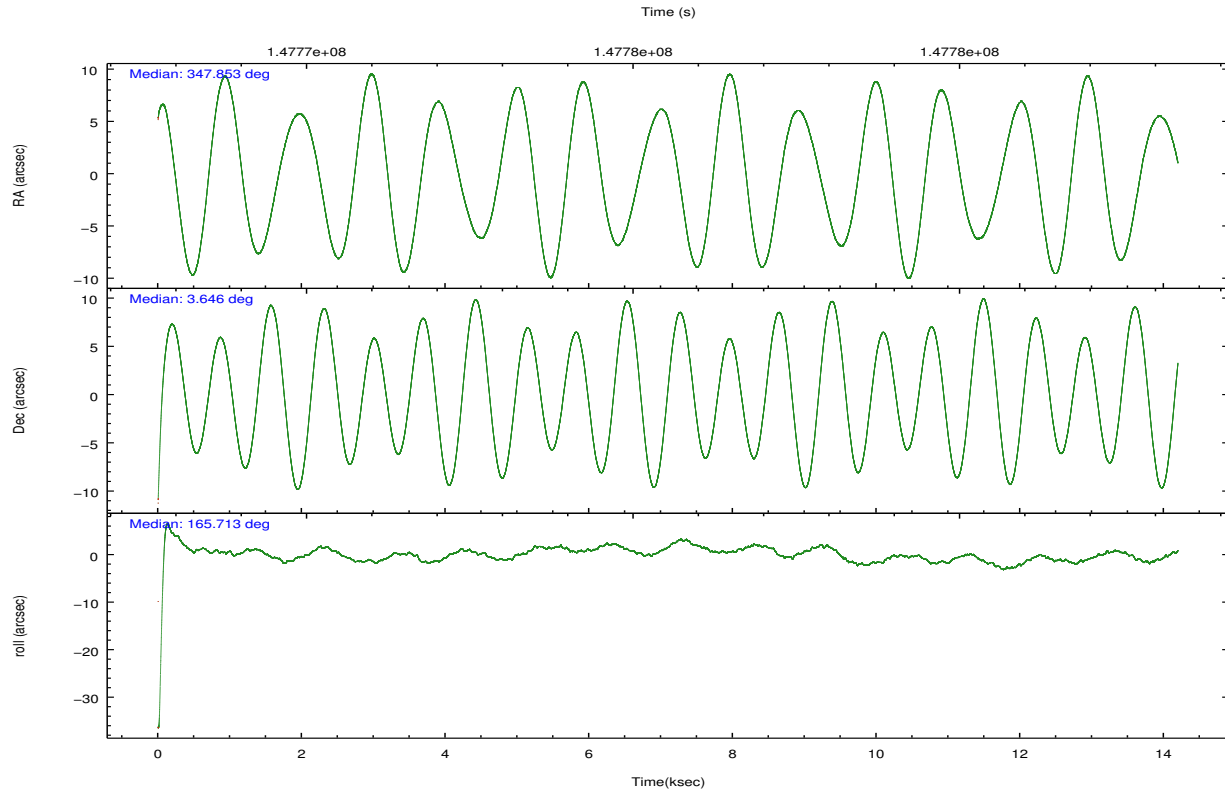
	ccd 0	ccd 1	ccd 2	ccd 3	ccd 6
grade 0 events	5580	7030	6484	10693	8192
	7%	8%	7%	11%	8%
grade 1 events	51	50	67	86	50
	0%	0%	0%	0%	0%
grade 2 events	2509	2400	2746	2595	2785
	3%	2%	2%	2%	3%
grade 3 events	845	1088	945	1137	953
	1%	1%	1%	1%	1%
grade 4 events	908	1034	1043	1114	998
	1%	1%	1%	1%	1%
grade 5 events	2368	2622	2314	2755	2764
	3%	3%	2%	2%	2%
grade 6 events	1508	1854	1585	1621	1680
	1%	2%	1%	1%	1%
grade 7 events	61979	67445	76751	73601	75009
	81%	80%	83%	78%	81%

2.2 Compared Parameters

Parameter	Planned	Actual	Parameter	Planned	Actual
Instrument	ACIS	ACIS	Obspar format version number	7	7
Detector	ACIS-01236	ACIS-01236	Obspar file type	PREDICTED	ACTUAL
Grating	NONE	NONE	Obspar update status	NONE	UPDATED
Data mode	VFAINT	VFAINT	Number of optional ACIS chips dropped	0	0
Observation mode	POINTING	POINTING	On-chip summing requested	N	N
[deg] Pointing RA	347.879097	347.8527149256283	Subarray requested	NONE	NONE
[deg] Pointing Dec	3.653123	3.645597897249849	Alternating exposures requested	N	N
[deg] Pointing Roll	165.500603	165.7109326876208	[s] Primary exposure time	0.000000	3.1
[mm] SIM focus pos	-0.782348	-0.7809083437167272			
[mm] SIM defocus	0	0.001439871863259334			
[mm] SIM translation stage pos	-227.742463	-227.734108438797			
[mm] SIM translation stage offset	-5.85	-5.858344564132665			
[s] Observation start time (MET)	147768635.184000	147767739.97673			
Observation start date	2002-09-07T06:49:31	2002-09-07T06:35:39			
[s] Observation end time (MET)	147782635.184000	147783143.16487			
Observation end date	2002-09-07T10:42:51	2002-09-07T10:52:23			
Read mode	TIMED	TIMED			

2.3 Aspect



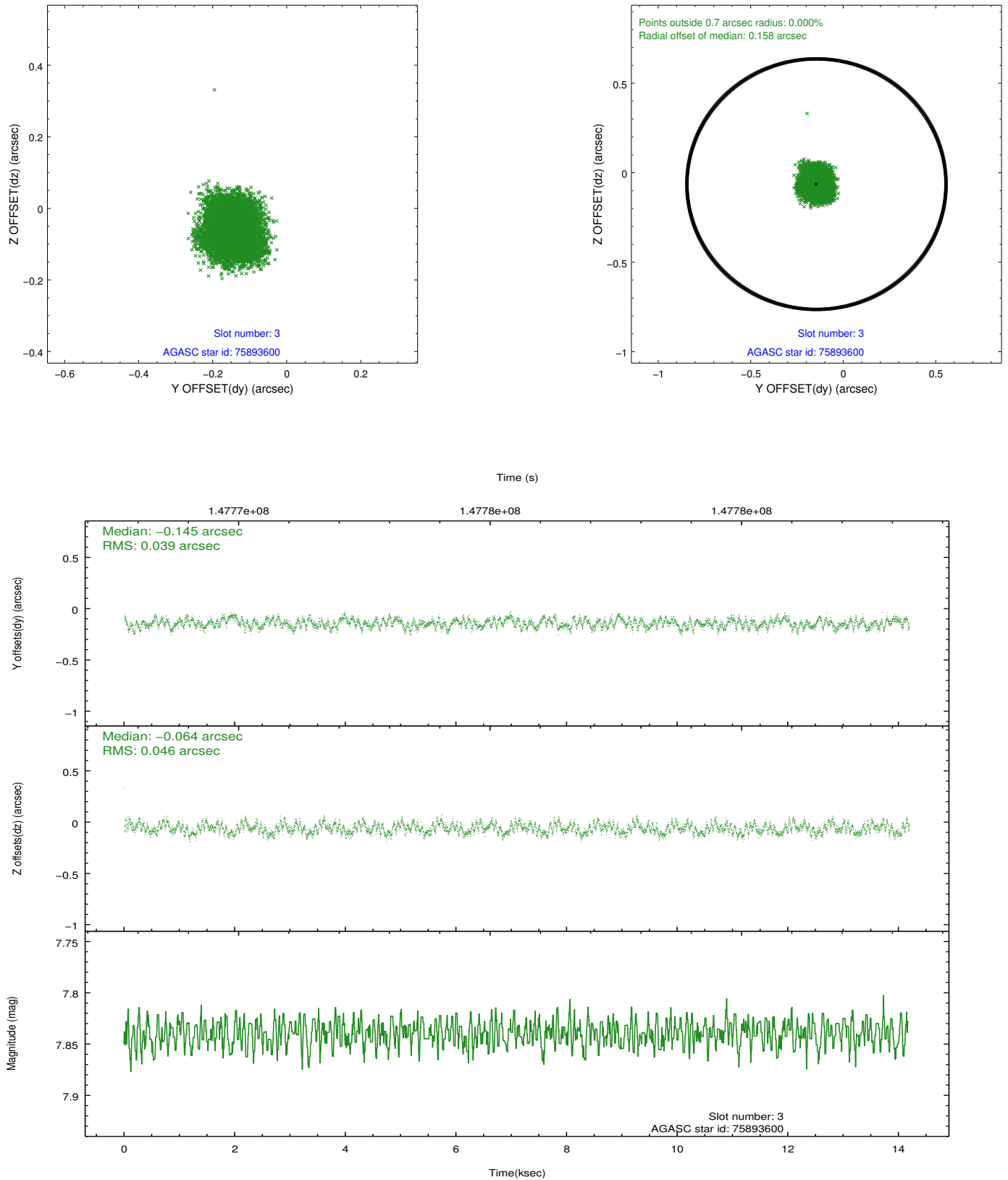


Slot Statistics

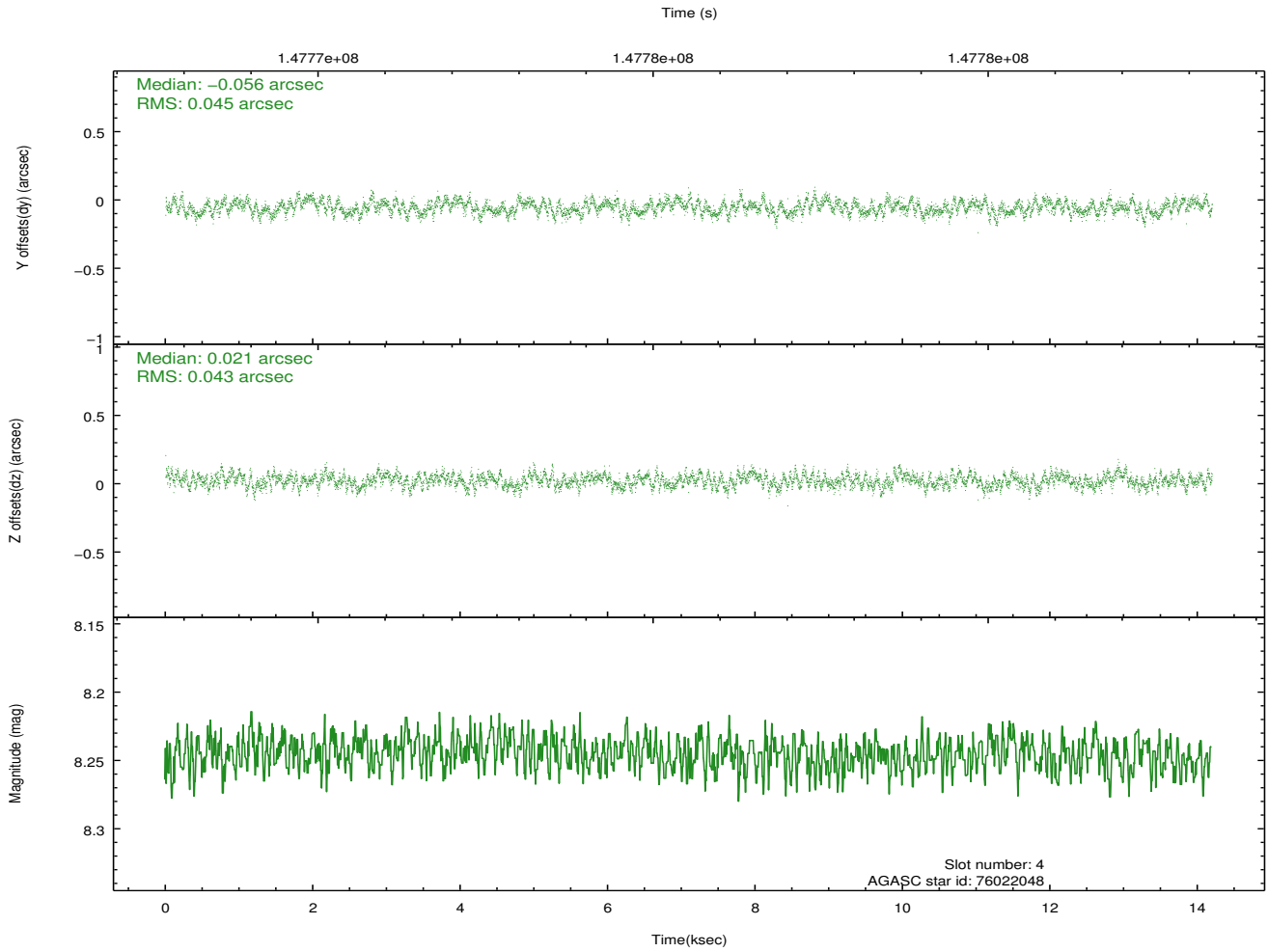
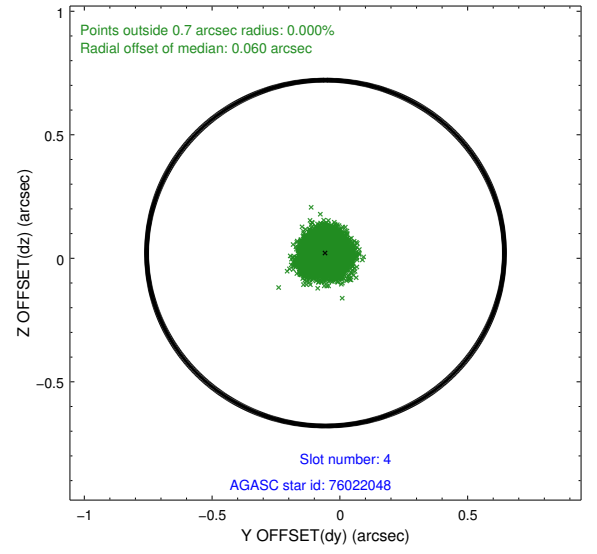
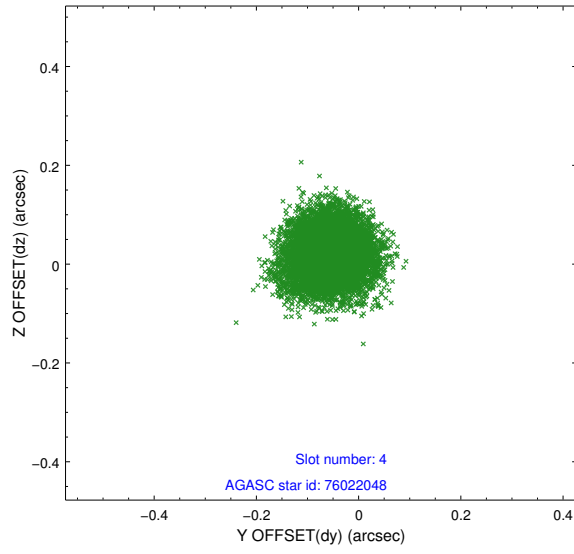
slot	status	id	mag	n_pts	med_dy	med_dz	dr1	dr2	ra	dec	mean_y	mean_z
0	FID	ACIS-I-1	7.24	3463	0.048	0.000	0.009	0.016	0.000000	0.000000	937.59	-950.85
1	FID	ACIS-I-5	7.24	3460	-0.133	0.079	0.009	0.015	0.000000	0.000000	-1810.49	946.55
2	FID	ACIS-I-6	7.25	3460	-0.006	-0.008	0.008	0.014	0.000000	0.000000	402.76	1591.32
3	GUIDE	75893600	7.84	6924	-0.145	-0.064	0.066	0.100	347.408770	3.241579	1264.97	1857.73
4	GUIDE	76022048	8.25	6926	-0.056	0.021	0.067	0.105	347.805738	3.153023	-196.04	1809.94
5	GUIDE	76035016	8.58	6920	0.029	-0.007	0.135	0.188	347.613656	3.490833	776.32	805.16
6	GUIDE	76036656	9.02	6925	0.103	0.046	0.070	0.113	348.499744	3.446198	-2346.20	162.92
7	GUIDE	76022688	9.09	6922	0.069	0.001	0.089	0.146	348.084137	3.042512	-1264.99	1944.27

2.4 Star Slots

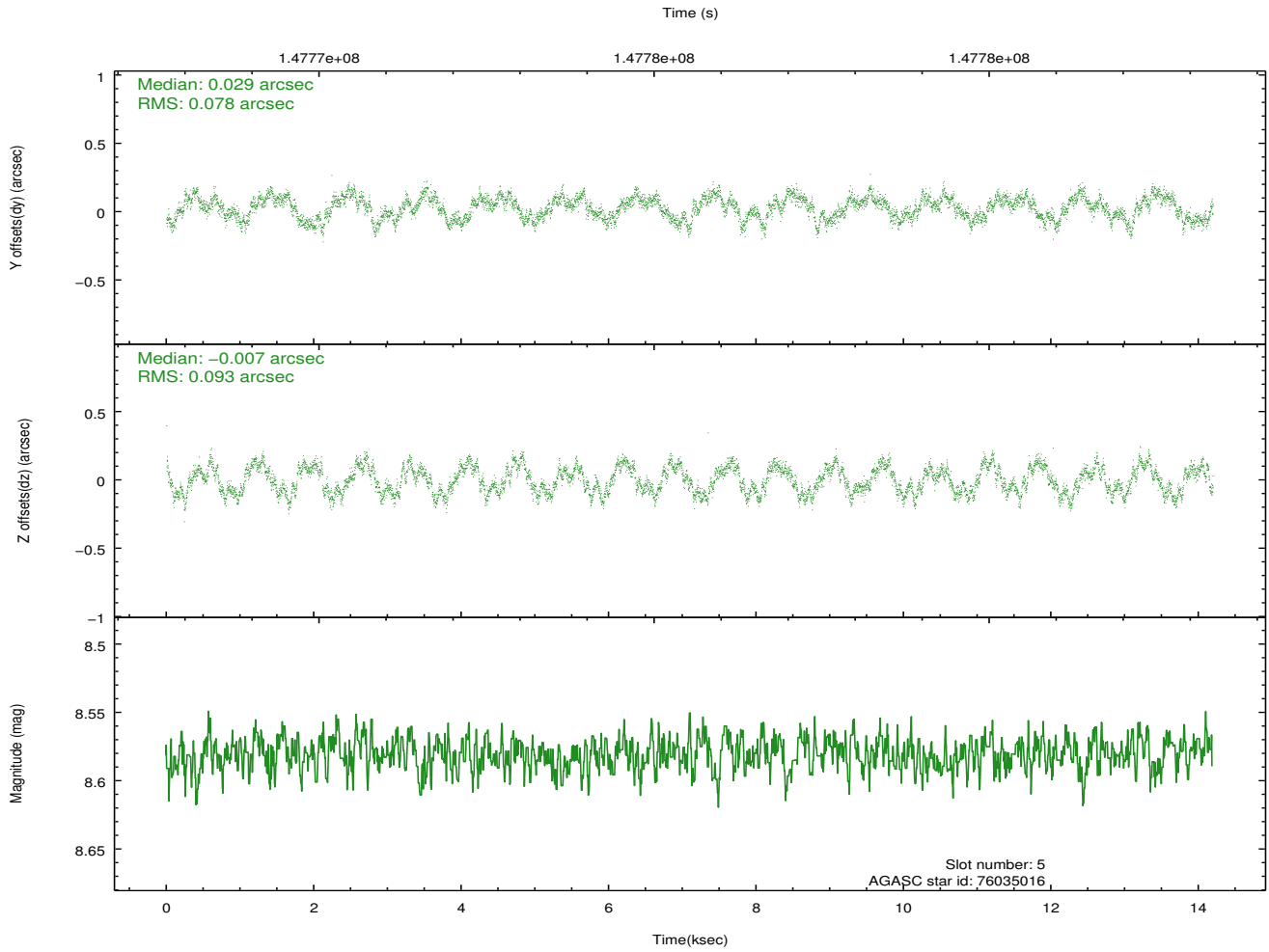
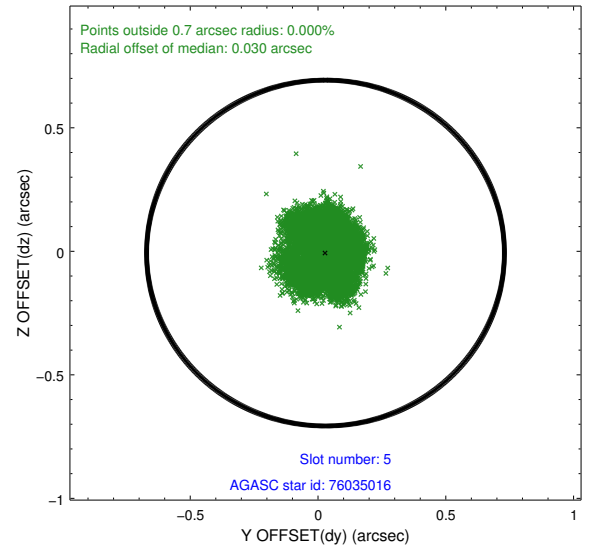
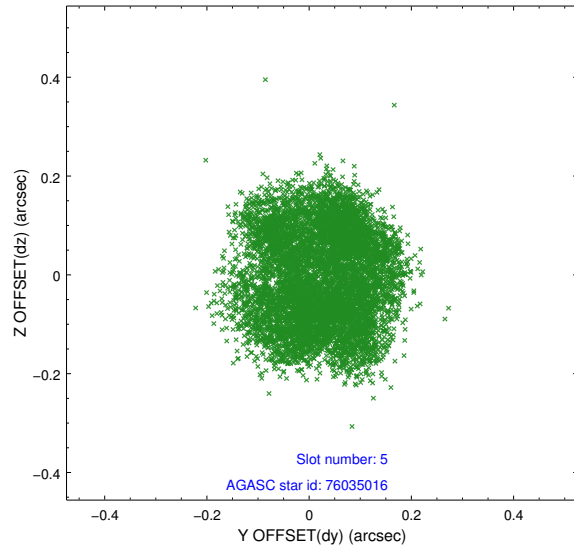
2.4.1 Slot 3



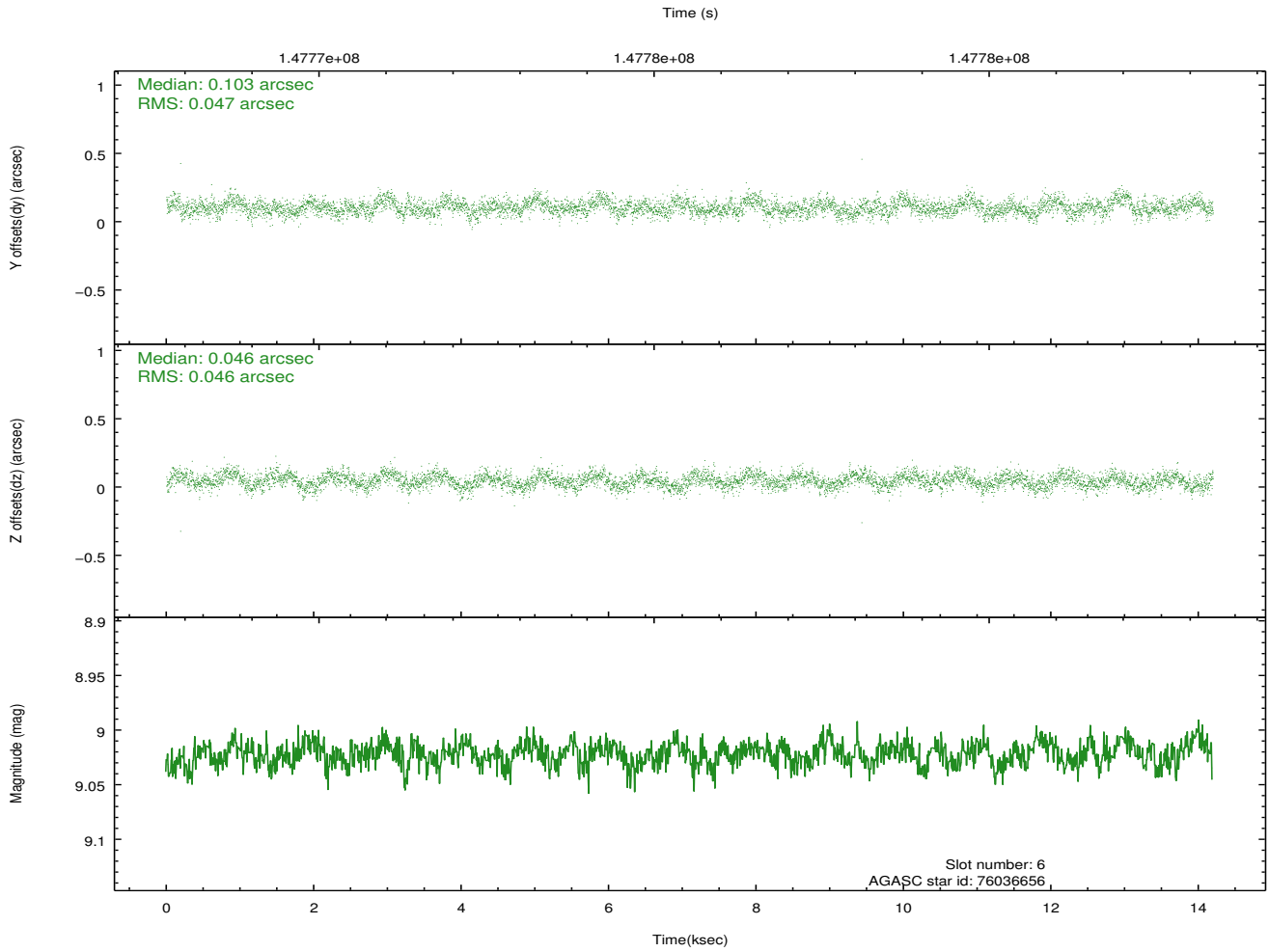
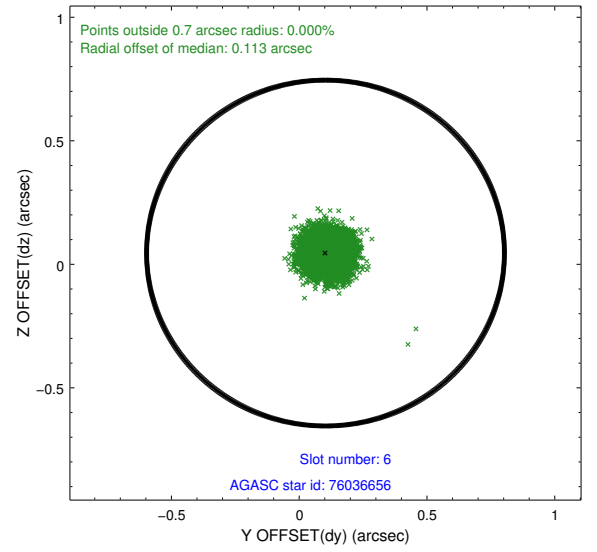
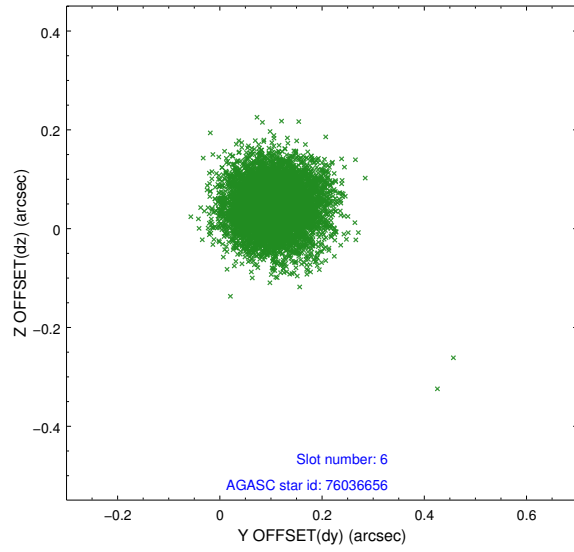
2.4.2 Slot 4



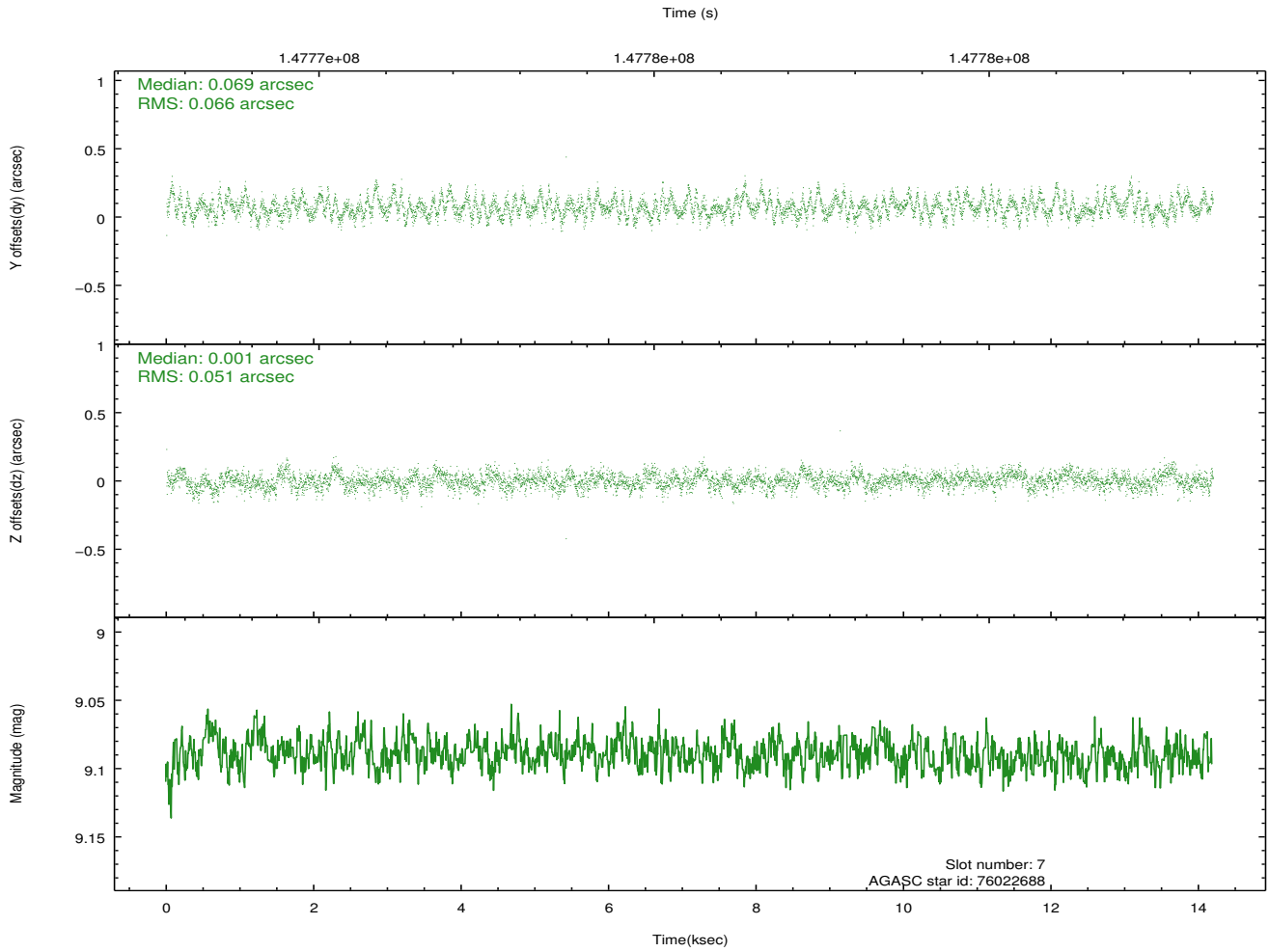
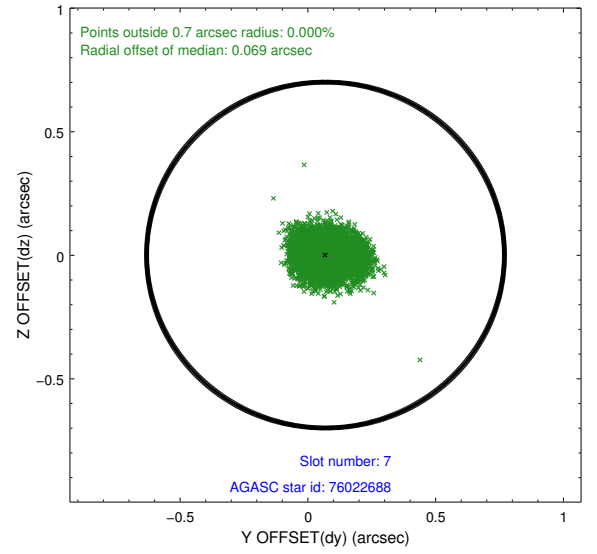
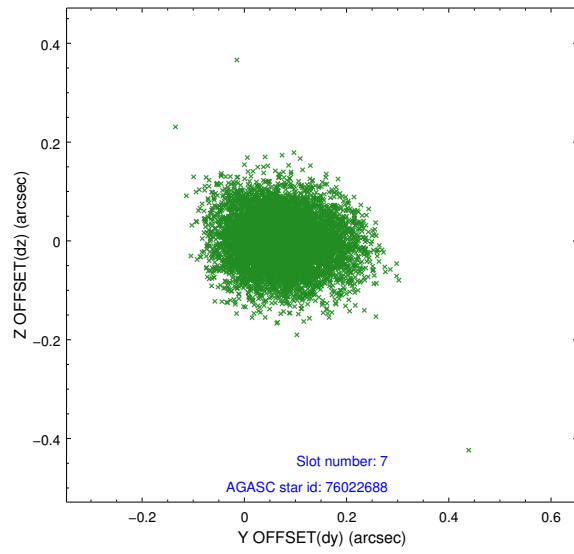
2.4.3 Slot 5



2.4.4 Slot 6

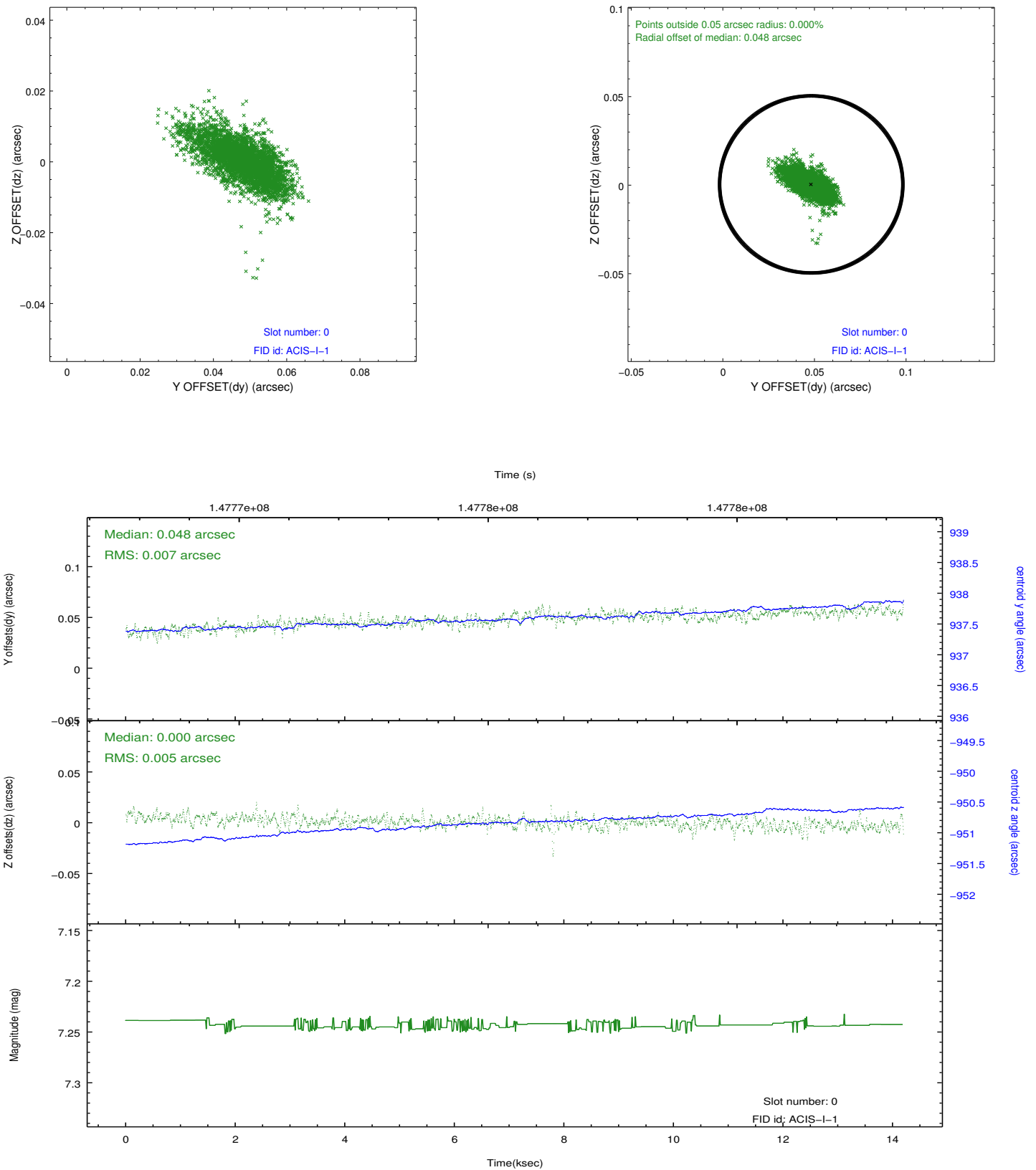


2.4.5 Slot 7

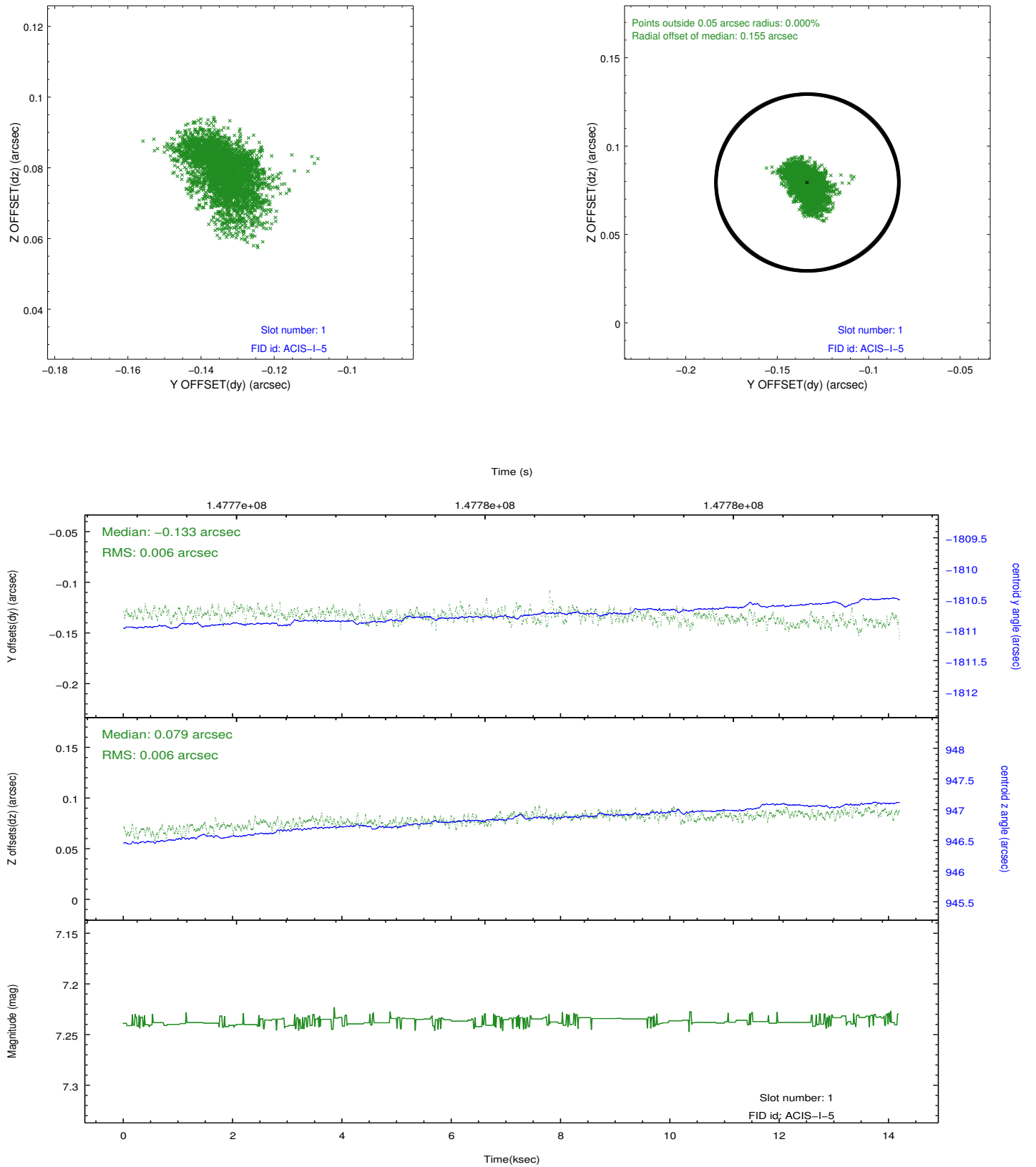


2.5 FID Slots

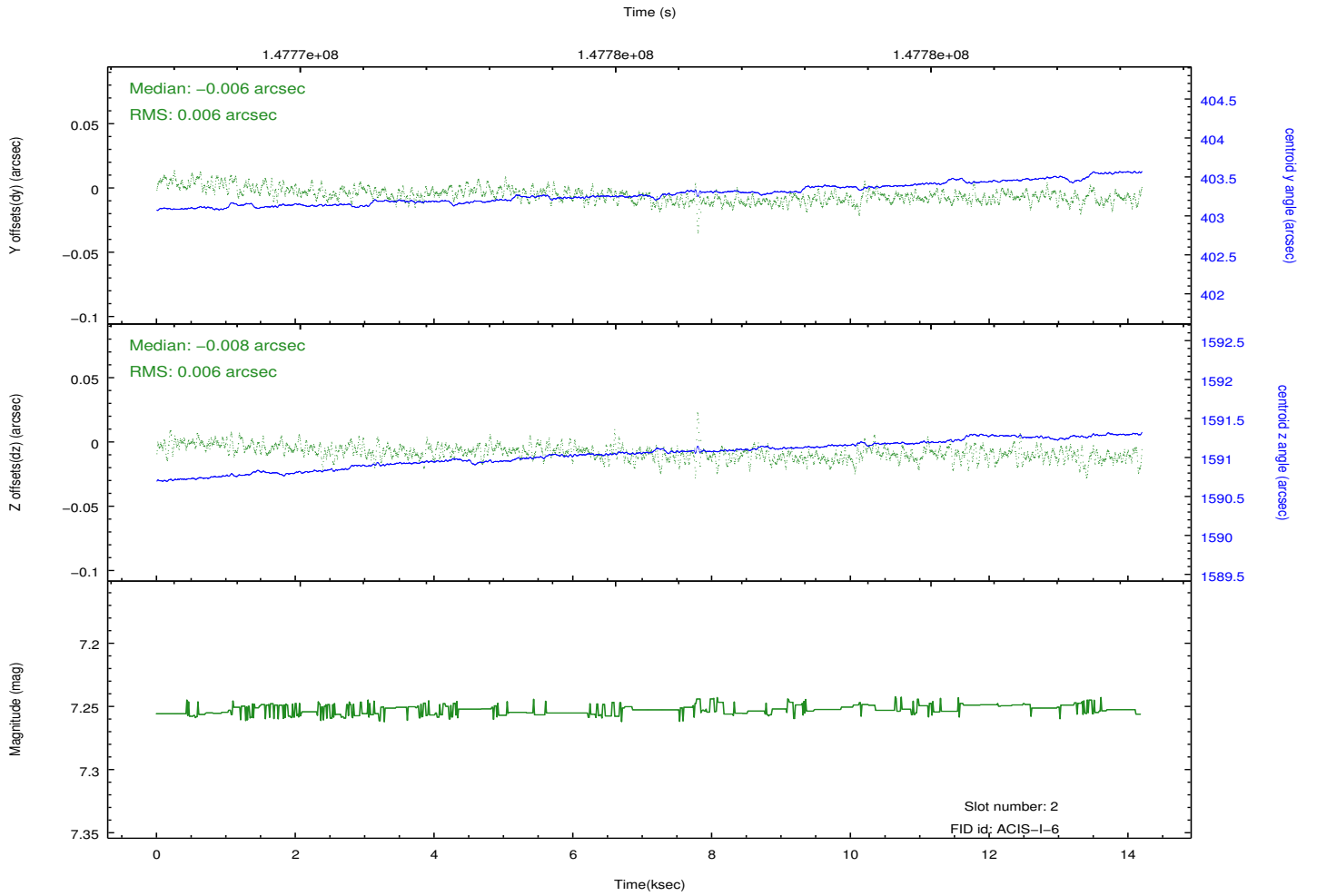
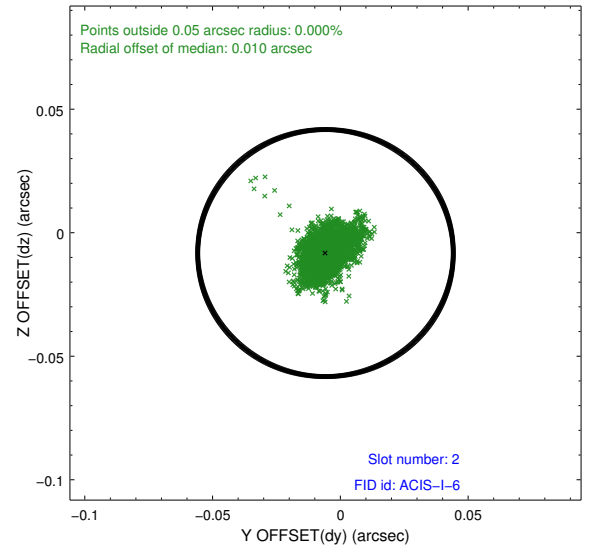
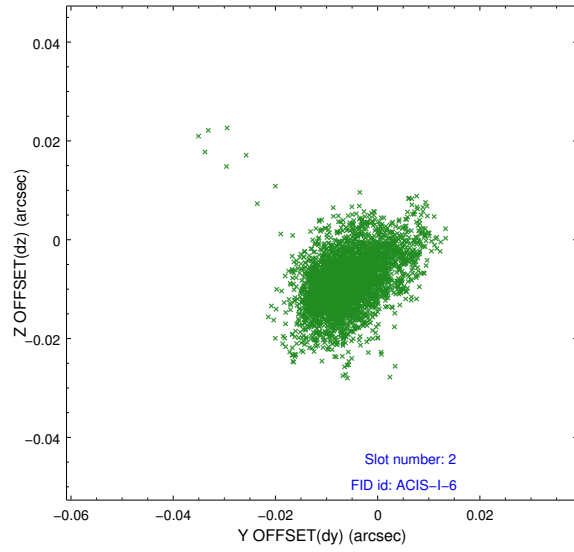
2.5.1 Slot 0



2.5.2 Slot 1



2.5.3 Slot 2



A Summary

A.1 Status

V&V Scientist	Jen Lauer
V&V Date (YYYY-MM-DD)	2012.10.22
V&V Edition	1
V&V Disposition and Status	OK
V&V Charge Time	13.773

A.2 Comments