

# V&V Reference Report

## L2 ASCDS Version : 7.6.9

Observation 3286 - L2 Version 002  
Chandra X-Ray Center

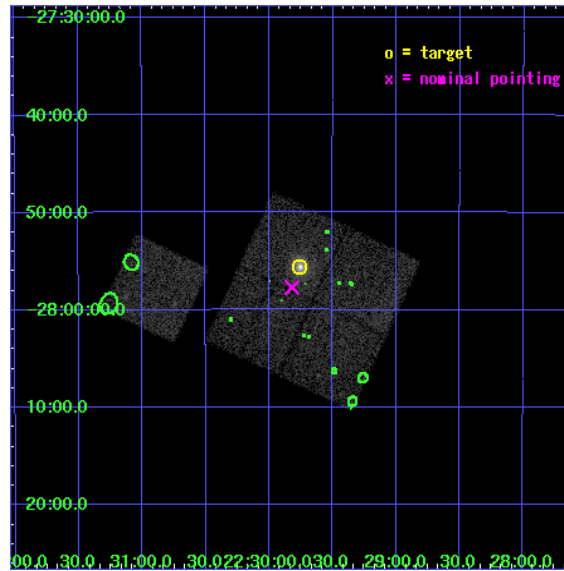
L2 Processing Date : Nov 17 2006

## Contents

<b>1</b>	<b>Front</b>	<b>2</b>
<b>2</b>	<b>OBI</b>	<b>3</b>
2.1	OBI . . . . .	3
2.1.1	Images . . . . .	3
2.1.2	Bias . . . . .	3
2.1.3	Parameters . . . . .	4
2.1.4	Events . . . . .	4
2.2	Compared Parameters . . . . .	5
2.3	Aspect . . . . .	6
2.4	Star Slots . . . . .	9
2.4.1	Slot 3 . . . . .	9
2.4.2	Slot 4 . . . . .	10
2.4.3	Slot 5 . . . . .	11
2.4.4	Slot 6 . . . . .	12
2.4.5	Slot 7 . . . . .	13
2.5	FID Slots . . . . .	14
2.5.1	Slot 0 . . . . .	14
2.5.2	Slot 1 . . . . .	15
2.5.3	Slot 2 . . . . .	16
<b>3</b>	<b>Point Sources</b>	<b>17</b>
<b>A</b>	<b>Summary</b>	<b>18</b>
A.1	Status . . . . .	18
A.2	Comments . . . . .	18

# 1 Front

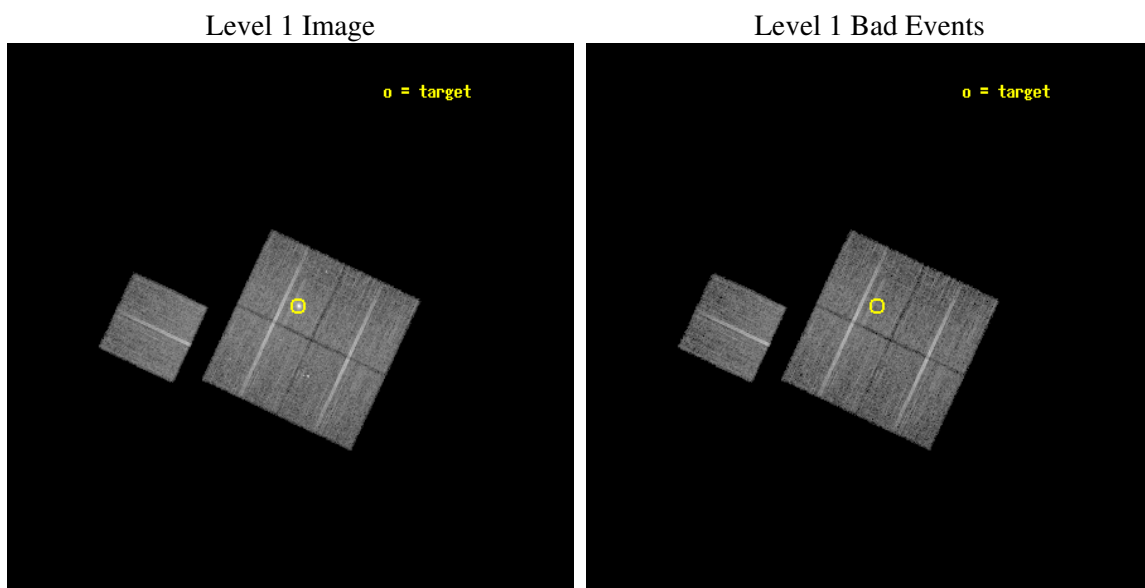
seq_num	800286
obs_id	3286
title	MACS: THE X-RAY PROPERTIES OF THE MOST MASSIVE GALAXY CLUSTERS AT $Z>0.3$
observer	Dr Harald Ebeling
object	MACSJ2229.7-2755
dtcycle	0
cycle	P
ra_targ	337.439167
dec_targ	-27.926944
ra_nom	337.45531176722
dec_nom	-27.961846883903
roll_nom	295.13567181692
revision	3
ontime	16646.918067336
livetime	16429.413827504
ontime0	16643.777047276
ontime1	16634.354046881
ontime2	16640.636076987
ontime3	16646.918067336
ontime6	16646.917997569
l2events	47713



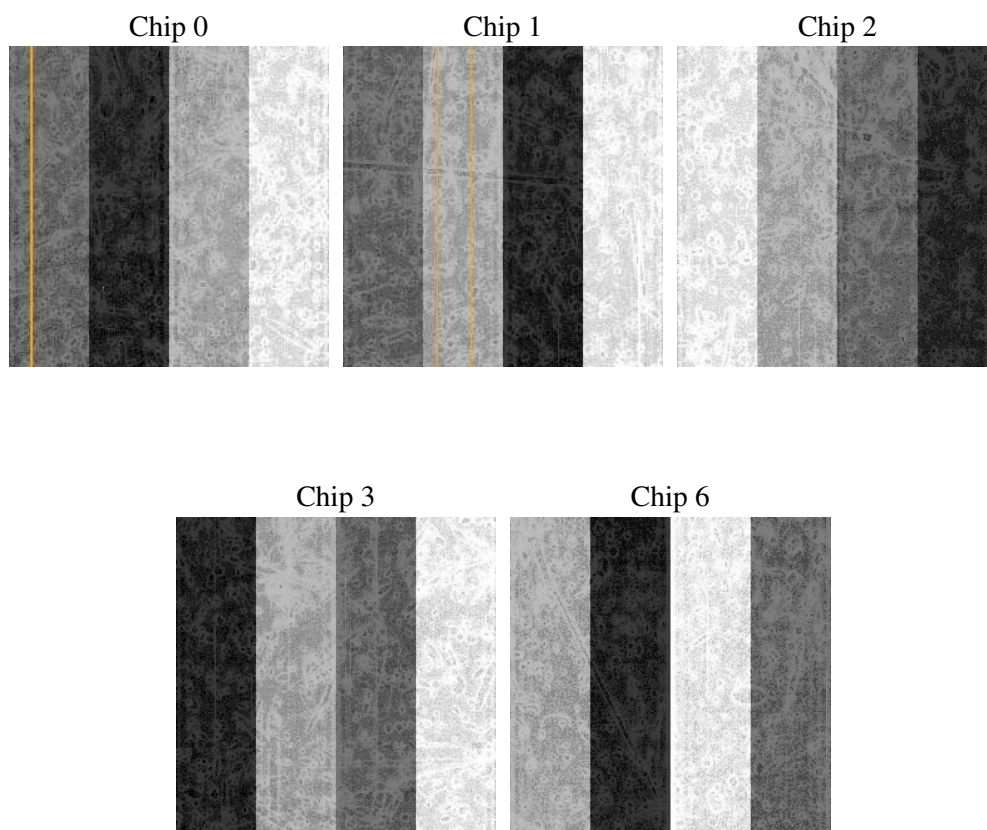
## 2 OBI

### 2.1 OBI

#### 2.1.1 Images



#### 2.1.2 Bias



### 2.1.3 Parameters

obi_num	1
ascdsver	7.6.9
caldsver	3.2.4
date	2006-11-17T15:37:51
revision	3

sched_exp_time	16500.000000
ontime	16650.456562519
ontime0	16647.315542459
ontime1	16637.892542064
ontime2	16644.17457217
ontime3	16650.456562519
ontime6	16650.456492752
l1events	430709

### 2.1.4 Events

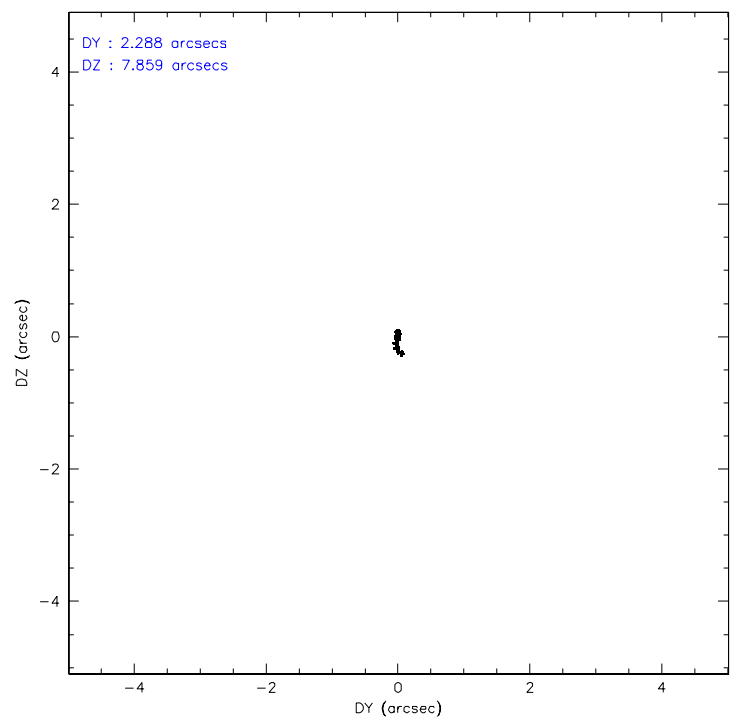
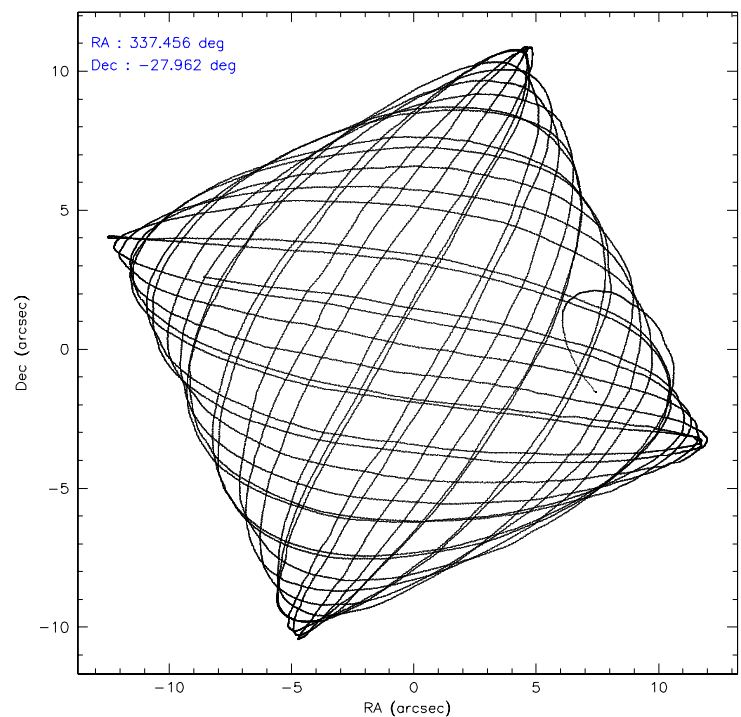
	ccd 0	ccd 1	ccd 2	ccd 3	ccd 6
level 1 events	79765	82195	88863	93673	86213
rejected events	70055	72007	79723	77131	76329
rejected %	87%	87%	89%	82%	88%

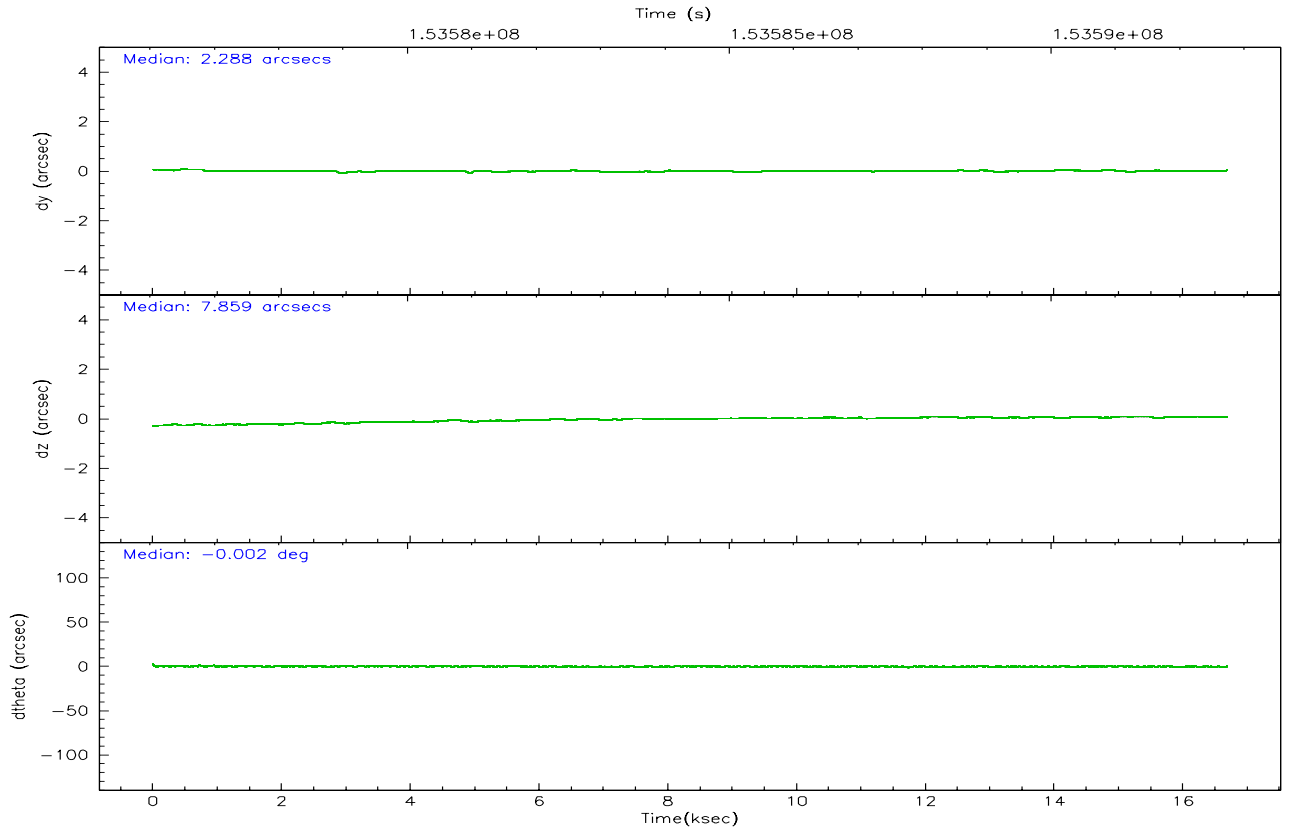
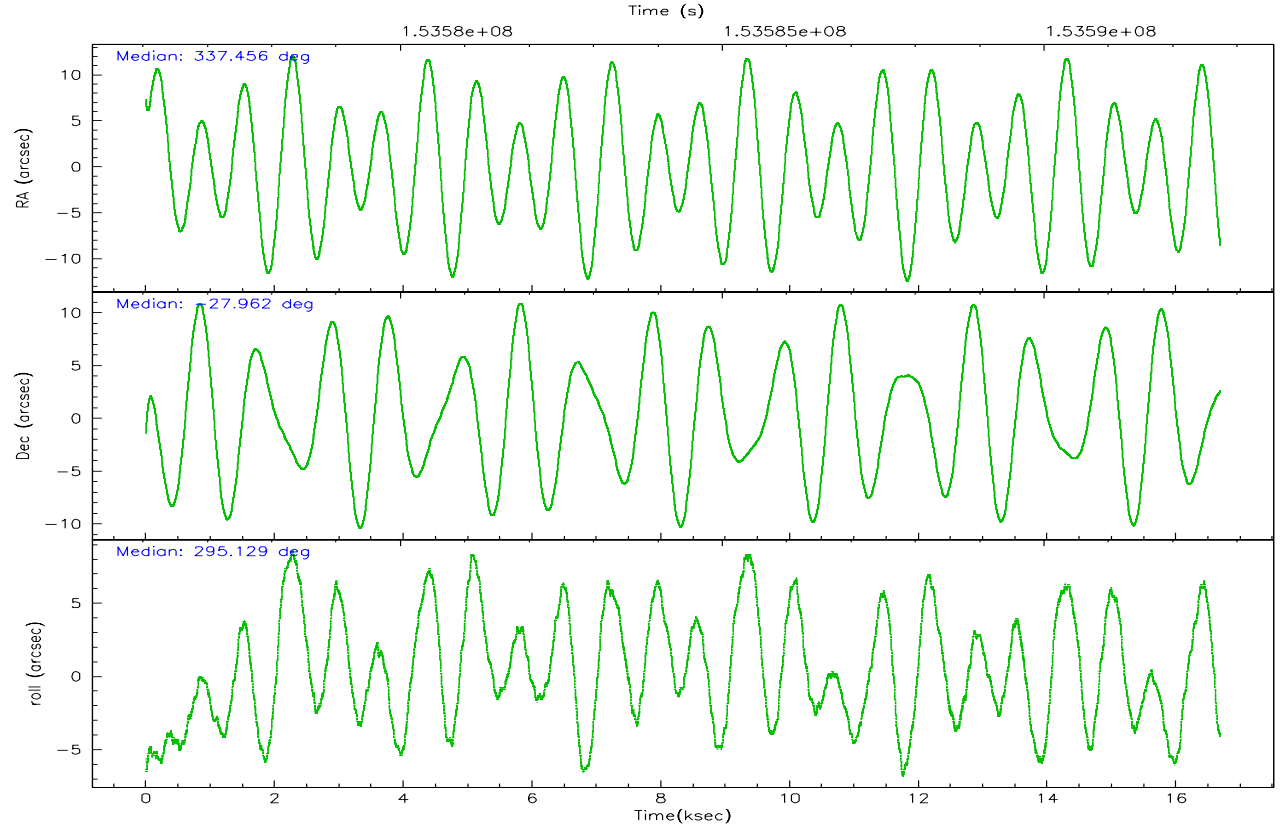
	ccd 0	ccd 1	ccd 2	ccd 3	ccd 6
grade 0 events	3879	4017	3680	10069	4174
	4%	4%	4%	10%	4%
grade 1 events	37	42	53	93	45
	0%	0%	0%	0%	0%
grade 2 events	2089	2102	2013	2424	1981
	2%	2%	2%	2%	2%
grade 3 events	1072	1096	961	1168	995
	1%	1%	1%	1%	1%
grade 4 events	983	1068	946	1153	968
	1%	1%	1%	1%	1%
grade 5 events	2907	3172	2732	3207	3273
	3%	3%	3%	3%	3%
grade 6 events	1689	1906	1541	1728	1766
	2%	2%	1%	1%	2%
grade 7 events	67109	68792	76937	73831	73011
	84%	83%	86%	78%	84%

## 2.2 Compared Parameters

Parameter	Planned	Actual	Parameter	Planned	Actual
Instrument	ACIS	ACIS	Obspar format version number	6	6
Detector	ACIS-01236	ACIS-01236	Obspar file type	PREDICTED	ACTUAL
Grating	NONE	NONE	Obspar update status	NONE	UPDATED
Data mode	VFAINT	VFAINT	Number of optional ACIS chips dropped	0	0
Observation mode	POINTING	POINTING	On-chip summing requested	N	N
Pointing RA	337.429758	337.4553117672233	Subarray requested	NONE	NONE
Pointing Dec	-27.946240	-27.96184688390254	Alternating exposures requested	N	N
Pointing Roll	294.915004	295.1356718169237	Primary exposure time	0.000000	3.1
SIM focus pos (mm)	-0.782348	-0.7809083437167272			
SIM defocus (mm)	0	0.001439871863259334			
SIM translation stage pos (mm)	-227.742463	-227.734108438797			
SIM translation stage offset (mm)	-5.85	-5.858344564132665			
Observation start time	153576239.184000	153575246.71751			
Observation start date	2002-11-13T12:02:55	2002-11-13T11:47:26			
Observation end time	153592739.184000	153593251.35576			
Observation end date	2002-11-13T16:37:55	2002-11-13T16:47:31			
Read mode	TIMED	TIMED			

## 2.3 Aspect





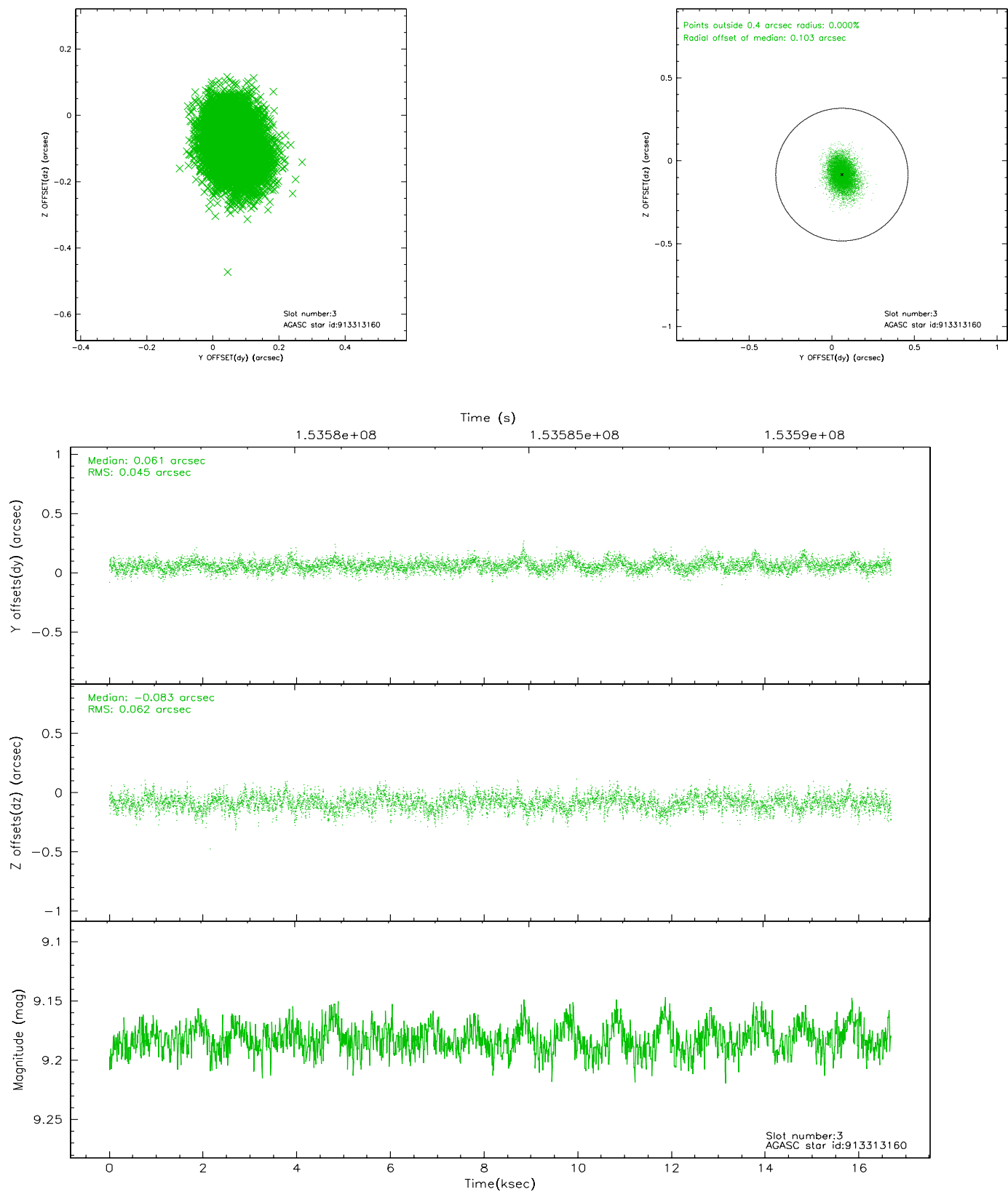
### Slot Statistics

slot	status	id	mag	n_pts	med_dy	med_dz	dr1	dr2	ra	dec	mean_y	mean_z
0	FID	ACIS-I-1	7.24	4066	0.013	0.030	0.006	0.010	0.000000	0.000000	937.42	-951.45
1	FID	ACIS-I-5	7.23	4065	-0.103	0.055	0.006	0.010	0.000000	0.000000	-1810.65	945.91
2	FID	ACIS-I-6	7.25	4067	-0.001	-0.014	0.007	0.011	0.000000	0.000000	402.68	1590.64
3	GUIDE	913313160	9.18	8126	0.061	-0.083	0.081	0.135	336.843776	-28.032525	-499.77	-1822.52
4	GUIDE	913314008	7.05	8134	-0.034	-0.088	0.061	0.097	337.357724	-28.659564	2231.94	-1289.23
5	GUIDE	913311480	9.08	8128	-0.132	0.010	0.073	0.118	337.398081	-27.586667	-1217.80	452.43
6	GUIDE	913441280	8.80	8133	-0.061	0.016	0.092	0.140	338.143252	-27.711258	194.92	2415.12
7	GUIDE	913444792	8.75	8131	0.168	0.145	0.075	0.117	338.355106	-28.147577	1903.55	2353.71

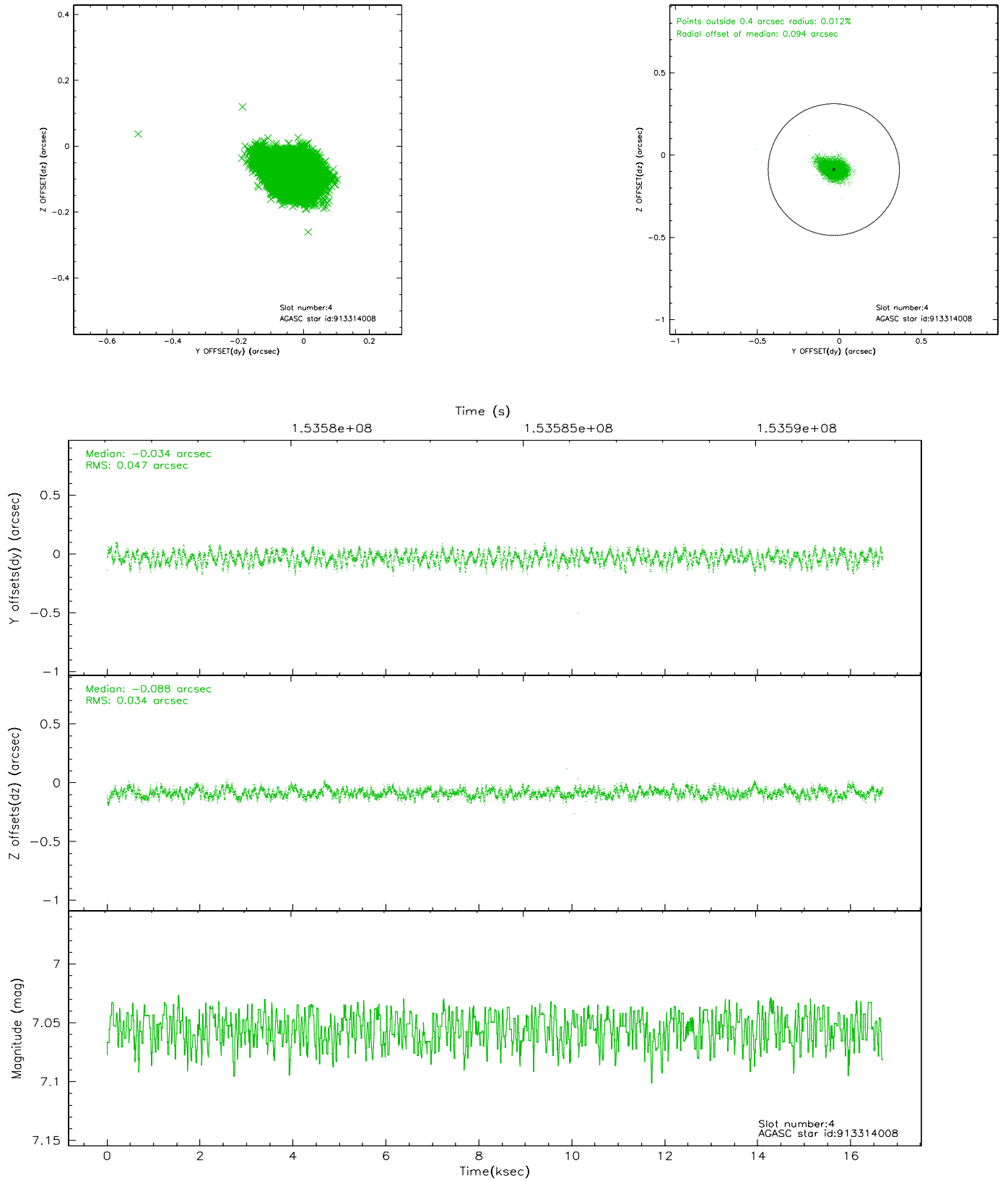


## 2.4 Star Slots

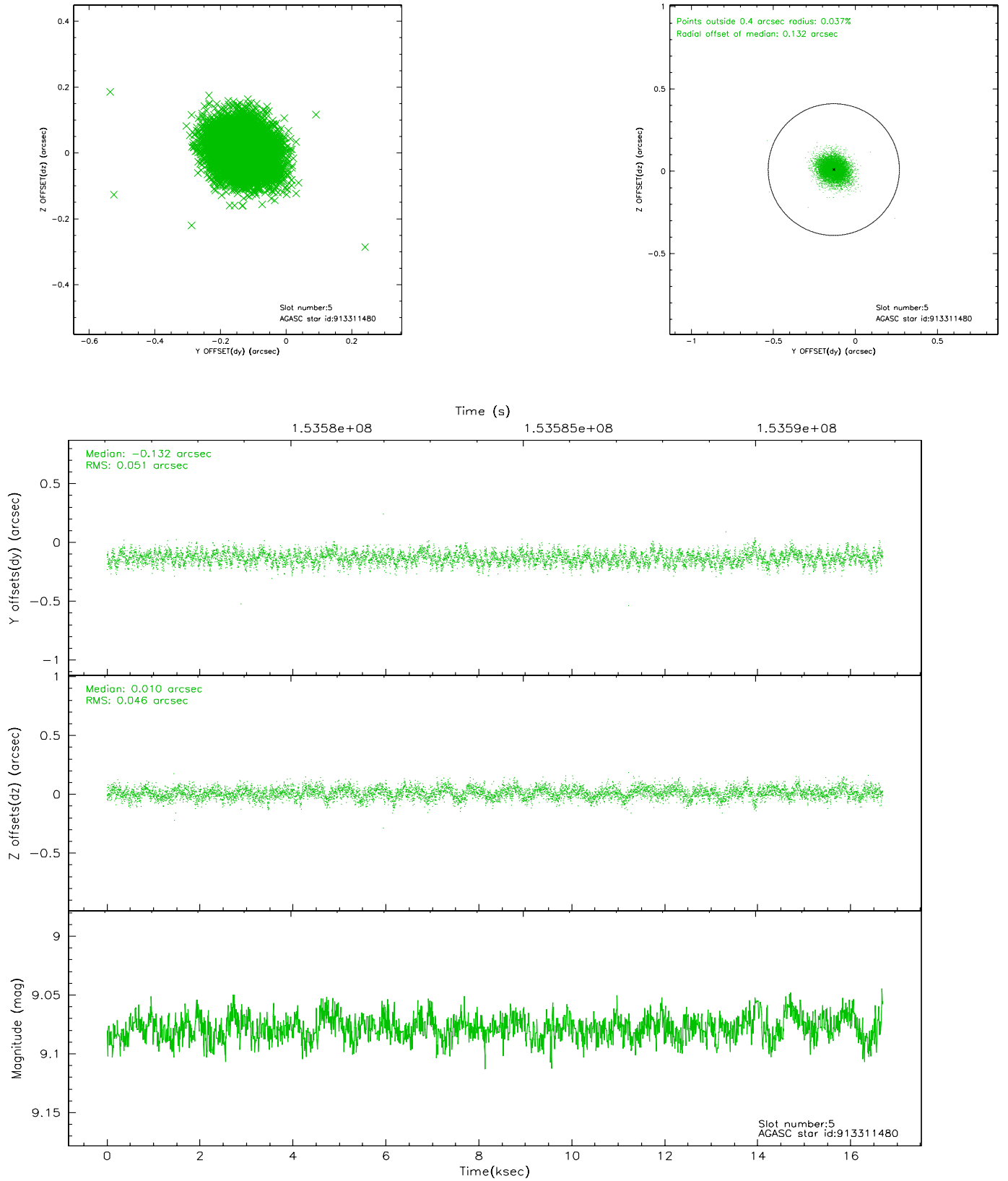
### 2.4.1 Slot 3



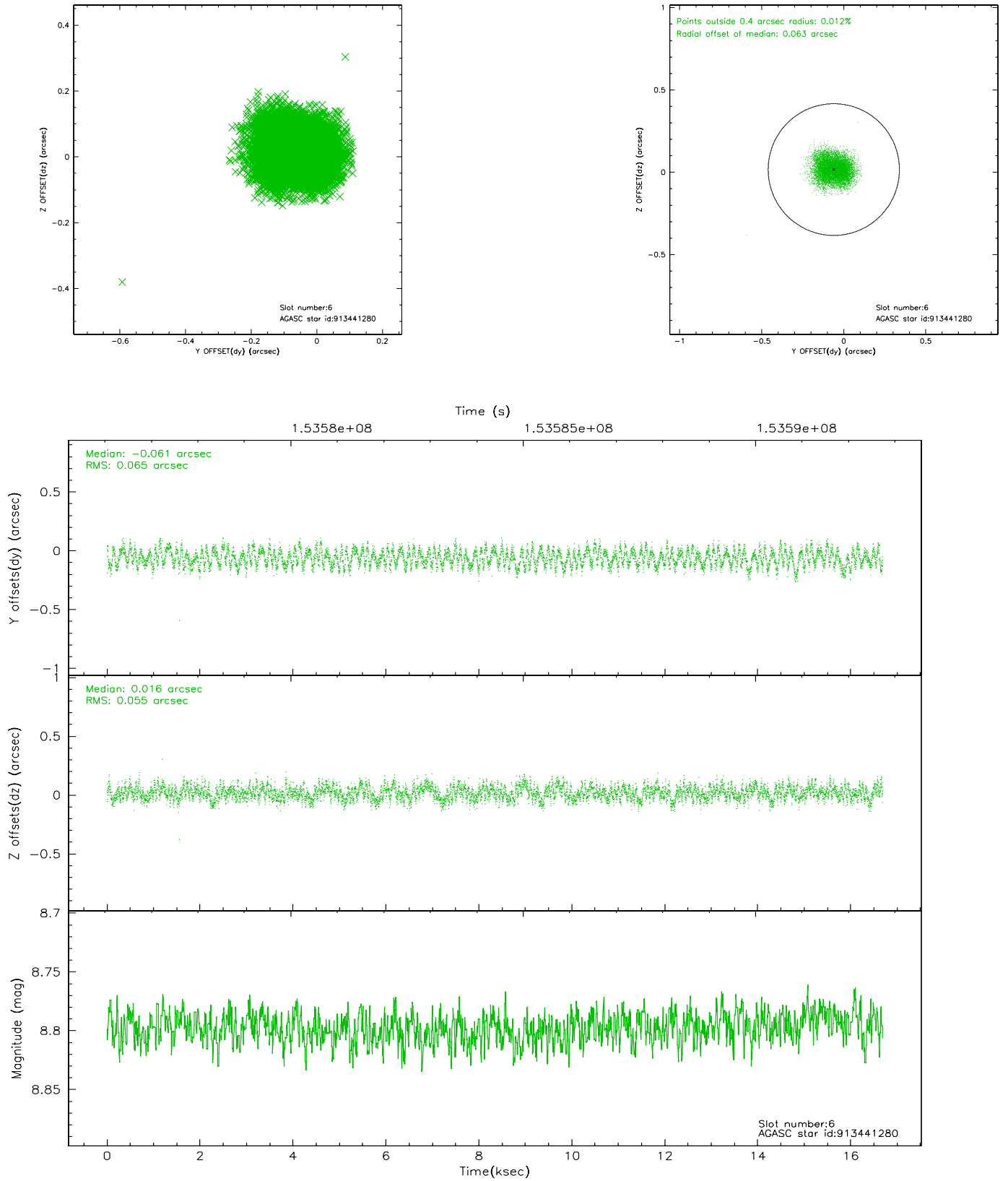
## 2.4.2 Slot 4



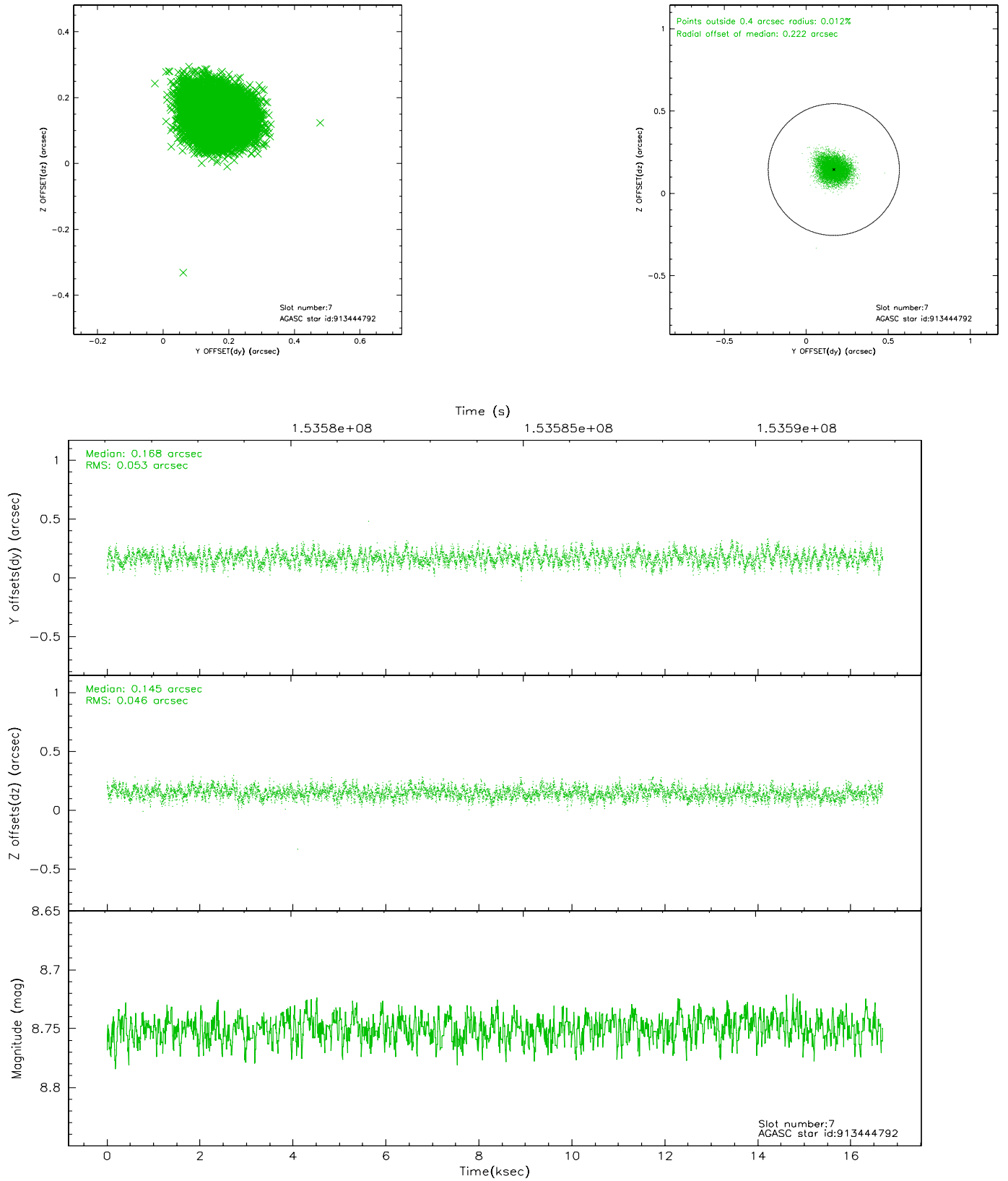
### 2.4.3 Slot 5



## 2.4.4 Slot 6

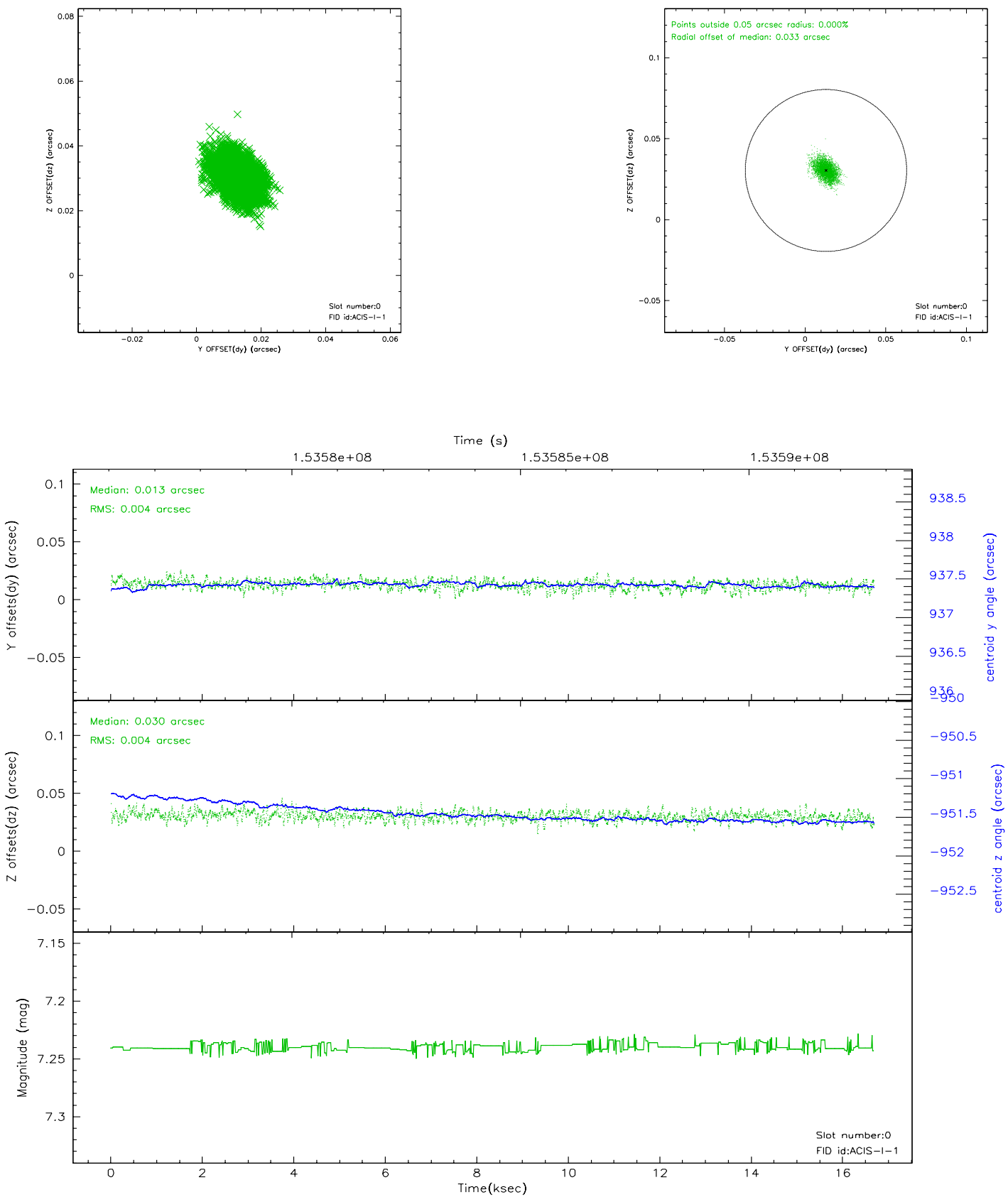


## 2.4.5 Slot 7

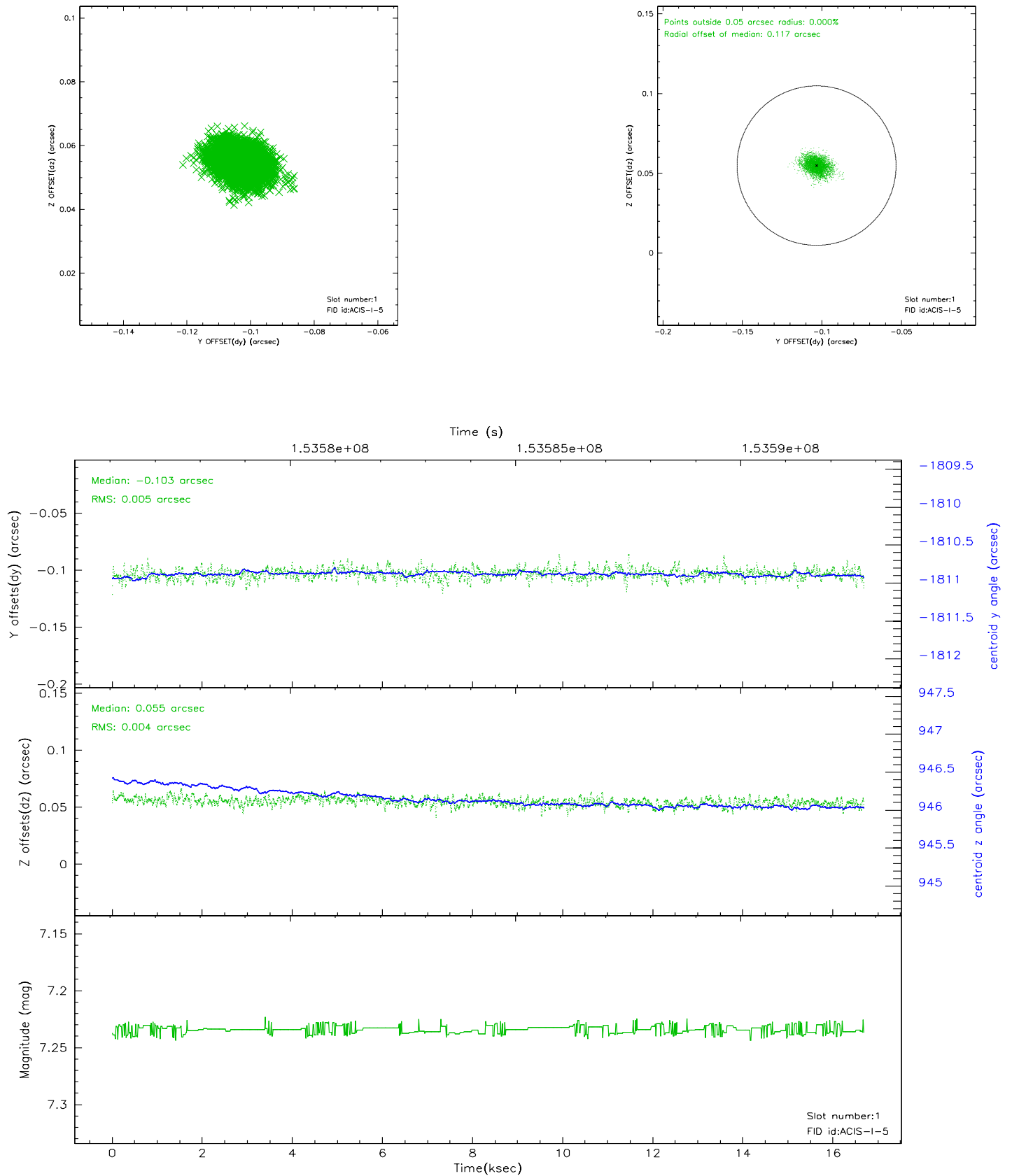


## 2.5 FID Slots

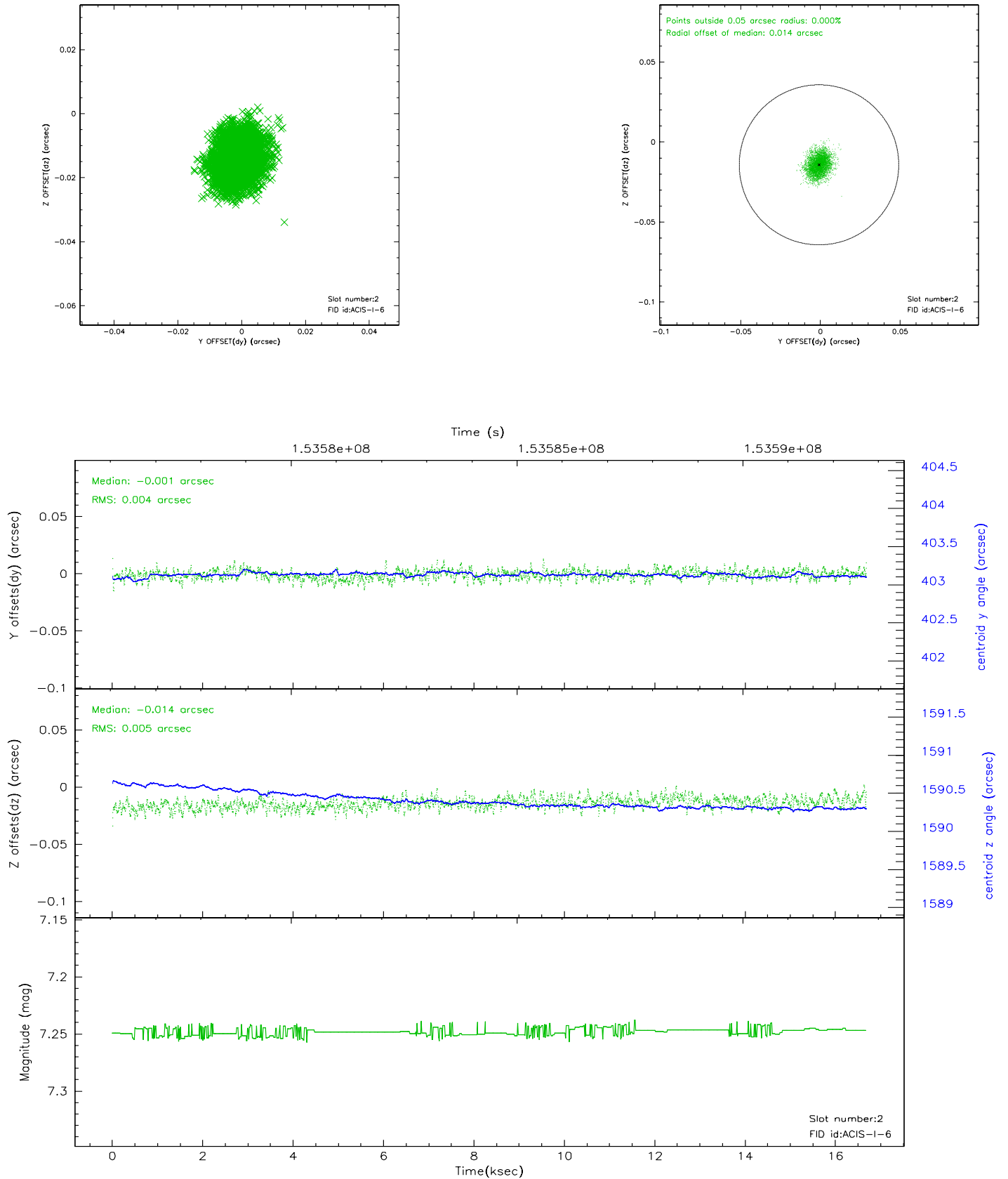
### 2.5.1 Slot 0



## 2.5.2 Slot 1

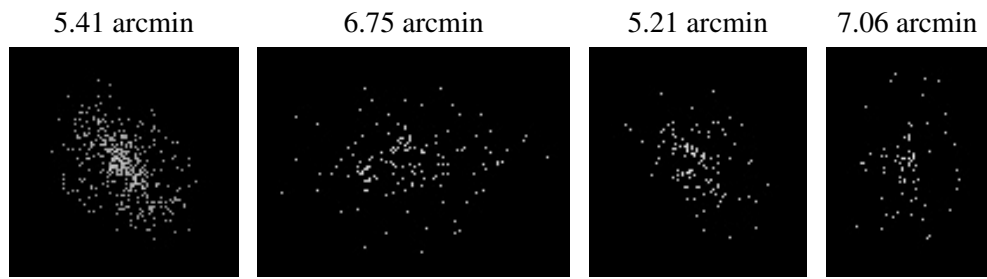


### 2.5.3 Slot 2





### 3 Point Sources



## A Summary

### A.1 Status

V&V Scientist	Beth Sundheim
V&V Date (YYYY-MM-DD)	2006.11.17
V&V Edition	1
V&V Disposition and Status	OK
V&V Charge Time	16.65

### A.2 Comments