

V&V Reference Report

L2 ASCDS Version : 7.6.9

Observation 3264 - L2 Version 001
Chandra X-Ray Center

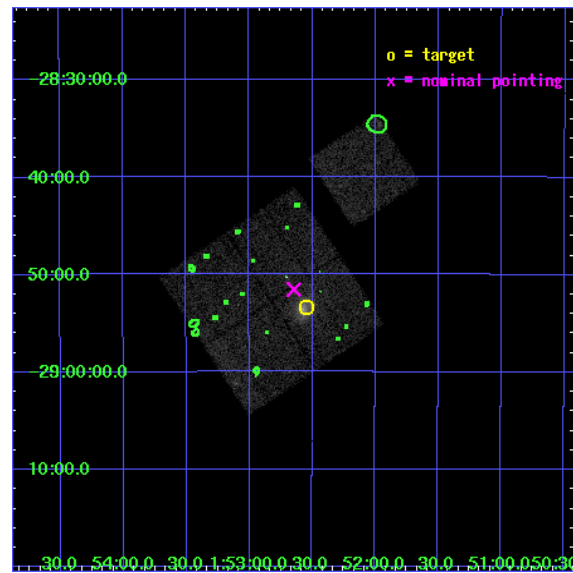
L2 Processing Date : Oct 4 2006

Contents

1	Front	2
2	OBI	3
2.1	OBI	3
2.1.1	Images	3
2.1.2	Bias	3
2.1.3	Parameters	4
2.1.4	Events	4
2.2	Compared Parameters	5
2.3	Aspect	6
2.4	Star Slots	9
2.4.1	Slot 3	9
2.4.2	Slot 4	10
2.4.3	Slot 5	11
2.4.4	Slot 6	12
2.4.5	Slot 7	13
2.5	FID Slots	14
2.5.1	Slot 0	14
2.5.2	Slot 1	15
2.5.3	Slot 2	16
3	Point Sources	17
A	Summary	18
A.1	Status	18
A.2	Comments	18

1 Front

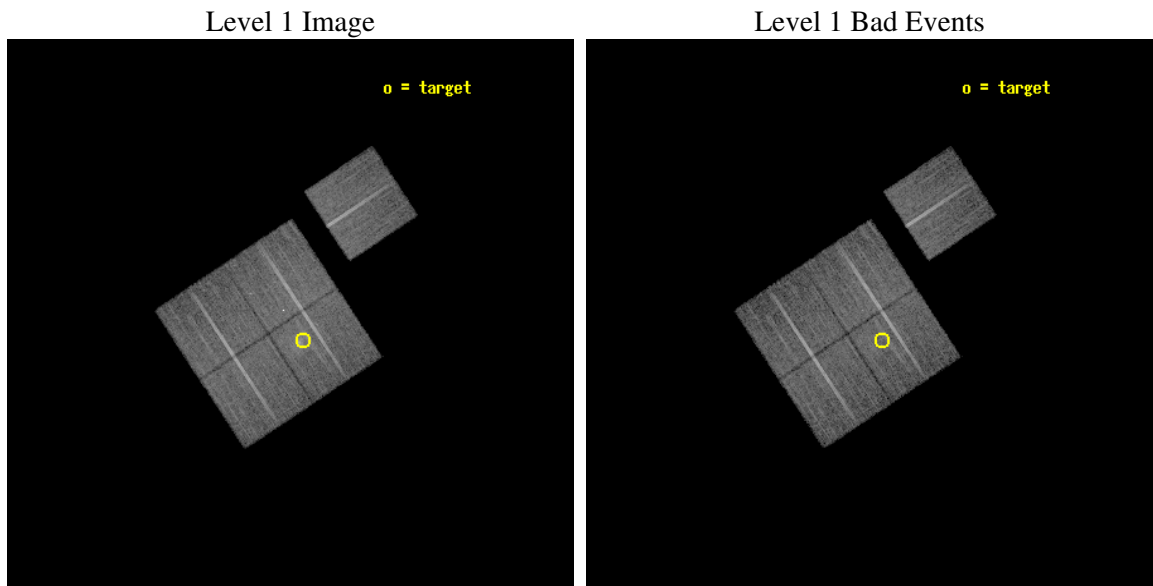
seq_num	800264
obs_id	3264
title	MACS: THE X-RAY PROPERTIES OF THE MOST MASSIVE GALAXY CLUSTERS AT $Z>0.3$
observer	Dr Harald Ebeling
object	MACSJ0152.5-2852
dtcycle	0
cycle	P
ra_targ	28.135833
dec_targ	-28.889444
ra_nom	28.16138310273
dec_nom	-28.859113676517
roll_nom	56.525501027205
revision	2
ontime	17775.358995557
livetime	17543.110844251
ontime0	17778.499965817
ontime1	17778.499965817
ontime2	17775.358995587
ontime3	17775.358995557
ontime6	17775.358985603
l2events	44729



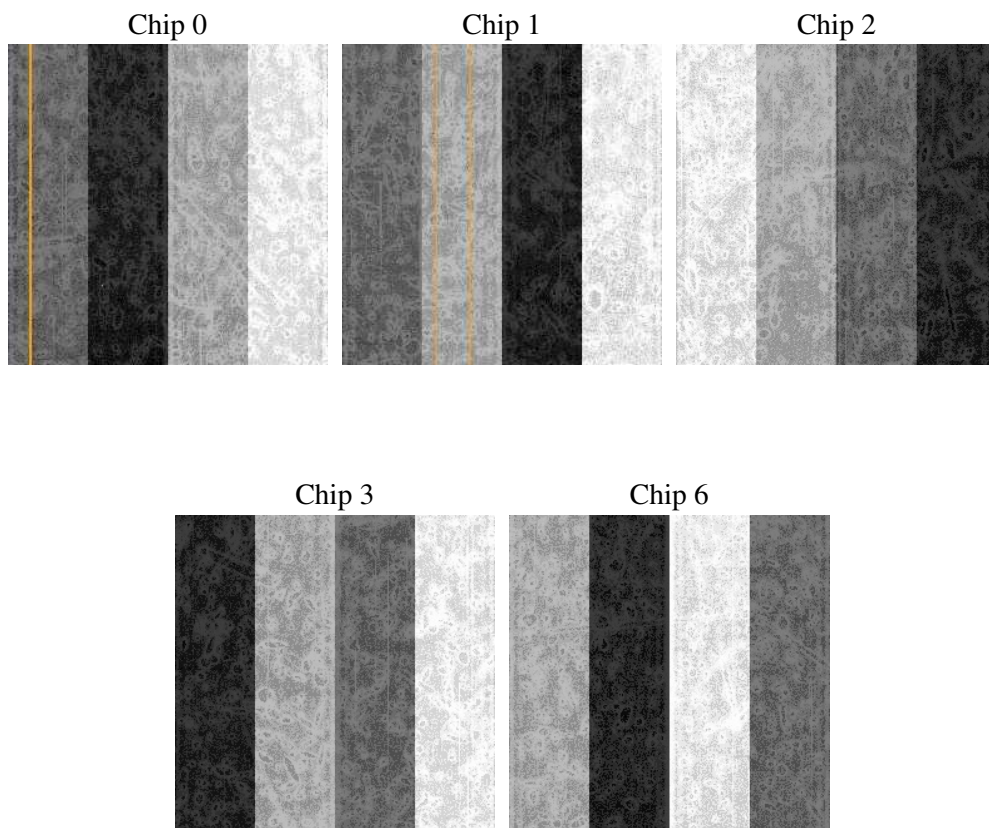
2 OBI

2.1 OBI

2.1.1 Images



2.1.2 Bias



2.1.3 Parameters

obi_num	0
ascdsver	7.6.9
caldbver	3.2.3
date	2006-10-04T10:17:51
revision	2

sched_exp_time	17664.344000
ontime	19483.656995475
ontime0	19486.797965735
ontime1	19486.797965735
ontime2	19483.656995505
ontime3	19483.656995475
ontime6	19483.656985521
l1events	528091

2.1.4 Events

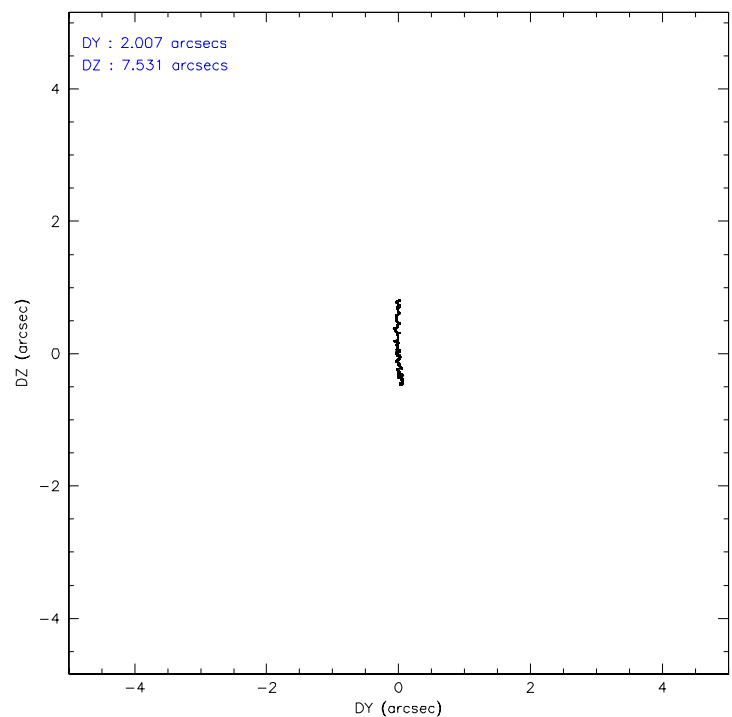
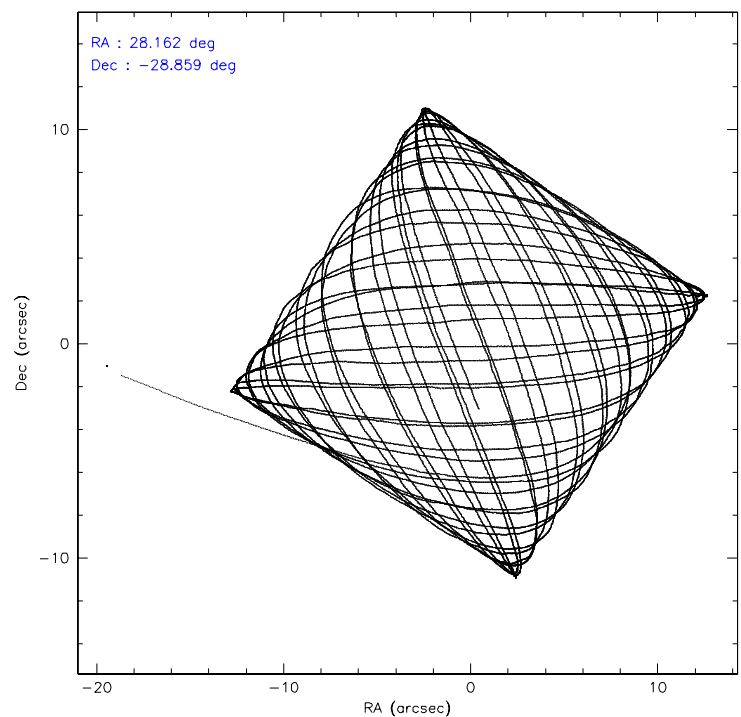
	ccd 0	ccd 1	ccd 2	ccd 3	ccd 6
level 1 events	99636	101541	114854	109245	102815
rejected events	90177	91055	104200	96414	93285
rejected %	90%	89%	90%	88%	90%

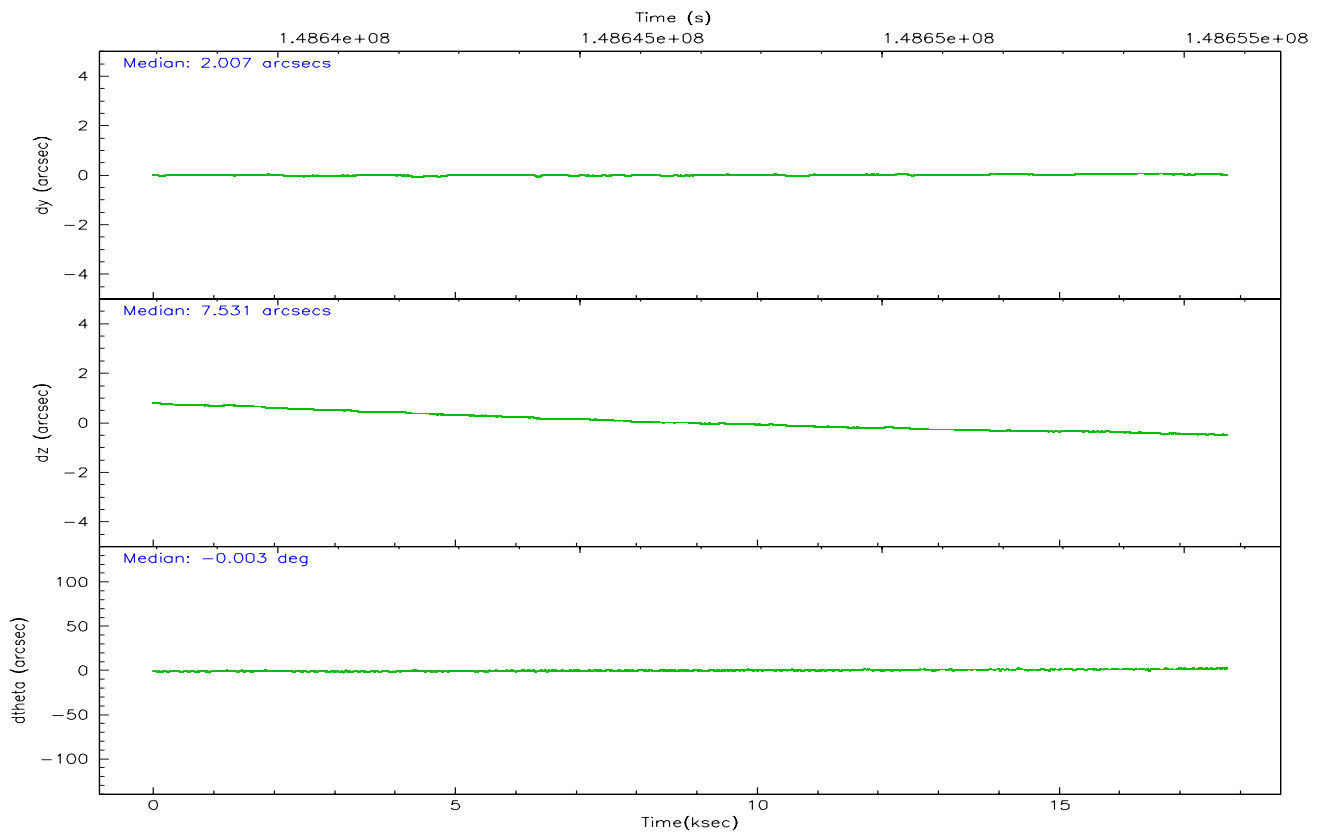
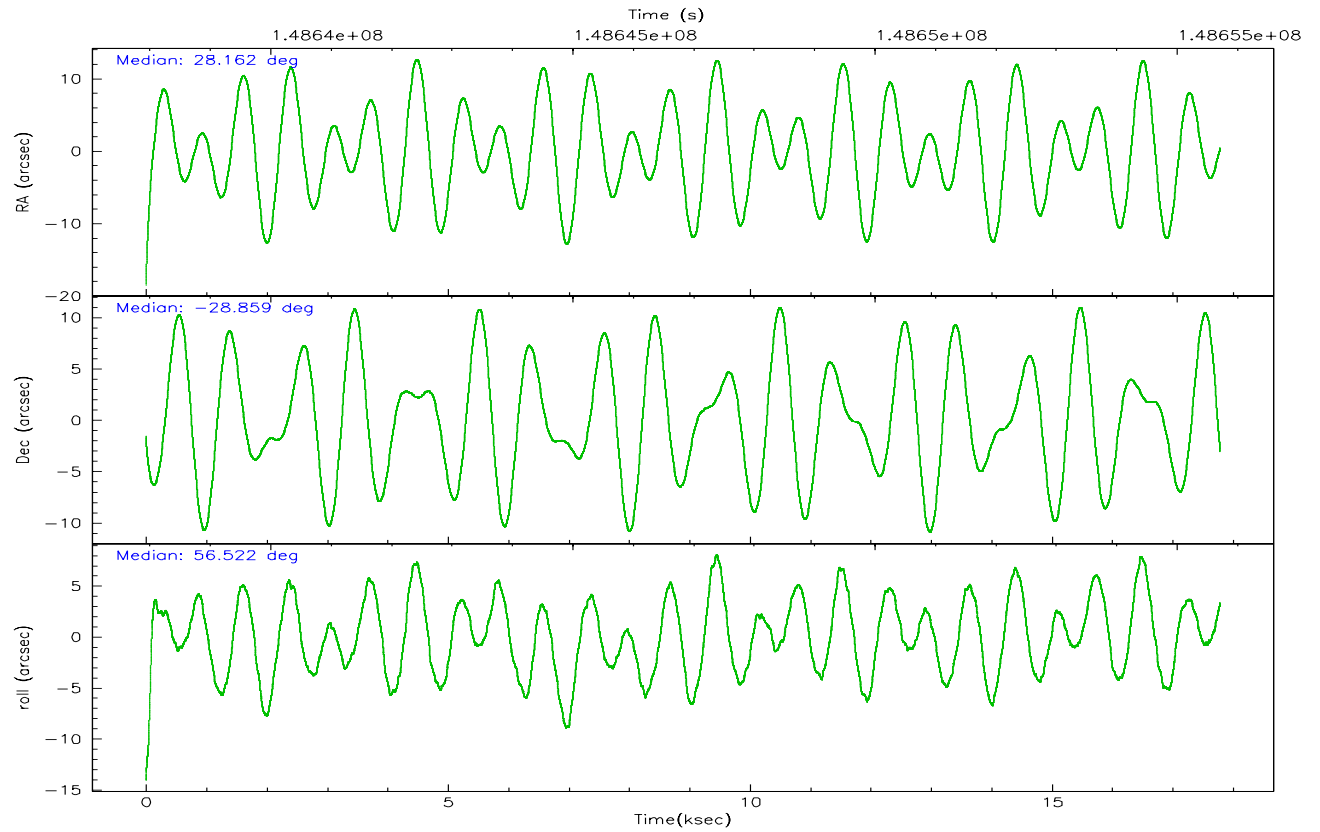
	ccd 0	ccd 1	ccd 2	ccd 3	ccd 6
grade 0 events	3724	4195	4890	6843	3693
	3%	4%	4%	6%	3%
grade 1 events	61	40	81	67	44
	0%	0%	0%	0%	0%
grade 2 events	2362	2419	2519	2424	2157
	2%	2%	2%	2%	2%
grade 3 events	1223	1344	1147	1262	1252
	1%	1%	0%	1%	1%
grade 4 events	1154	1300	1182	1252	1174
	1%	1%	1%	1%	1%
grade 5 events	3537	3713	3413	3907	3948
	3%	3%	2%	3%	3%
grade 6 events	1905	2245	1818	1927	2209
	1%	2%	1%	1%	2%
grade 7 events	85670	86285	99804	91563	88338
	85%	84%	86%	83%	85%

2.2 Compared Parameters

Parameter	Planned	Actual	Parameter	Planned	Actual
Instrument	ACIS	ACIS	Obspar format version number	6	6
Detector	ACIS-01236	ACIS-01236	Obspar file type	PREDICTED	ACTUAL
Grating	NONE	NONE	Obspar update status	NONE	UPDATED
Data mode	VFAINT	VFAINT	Number of optional ACIS chips dropped	0	0
Observation mode	POINTING	POINTING	On-chip summing requested	N	N
Pointing RA	28.159590	28.16138310272958	Subarray requested	NONE	NONE
Pointing Dec	-28.886489	-28.85911367651697	Alternating exposures requested	N	N
Pointing Roll	56.315955	56.52550102720502	Primary exposure time	0.000000	3.1
SIM focus pos (mm)	-0.782348	-0.7809083437167272			
SIM defocus (mm)	0	0.001439871863259334			
SIM translation stage pos (mm)	-227.742463	-227.734108438797			
SIM translation stage offset (mm)	-5.85	-5.858344564132665			
Observation start time	148638051.184000	148636228.15011			
Observation start date	2002-09-17T08:19:47	2002-09-17T07:50:28			
Observation end time	148655716.184000	148656350.95094			
Observation end date	2002-09-17T13:14:12	2002-09-17T13:25:50			
Read mode	TIMED	TIMED			

2.3 Aspect



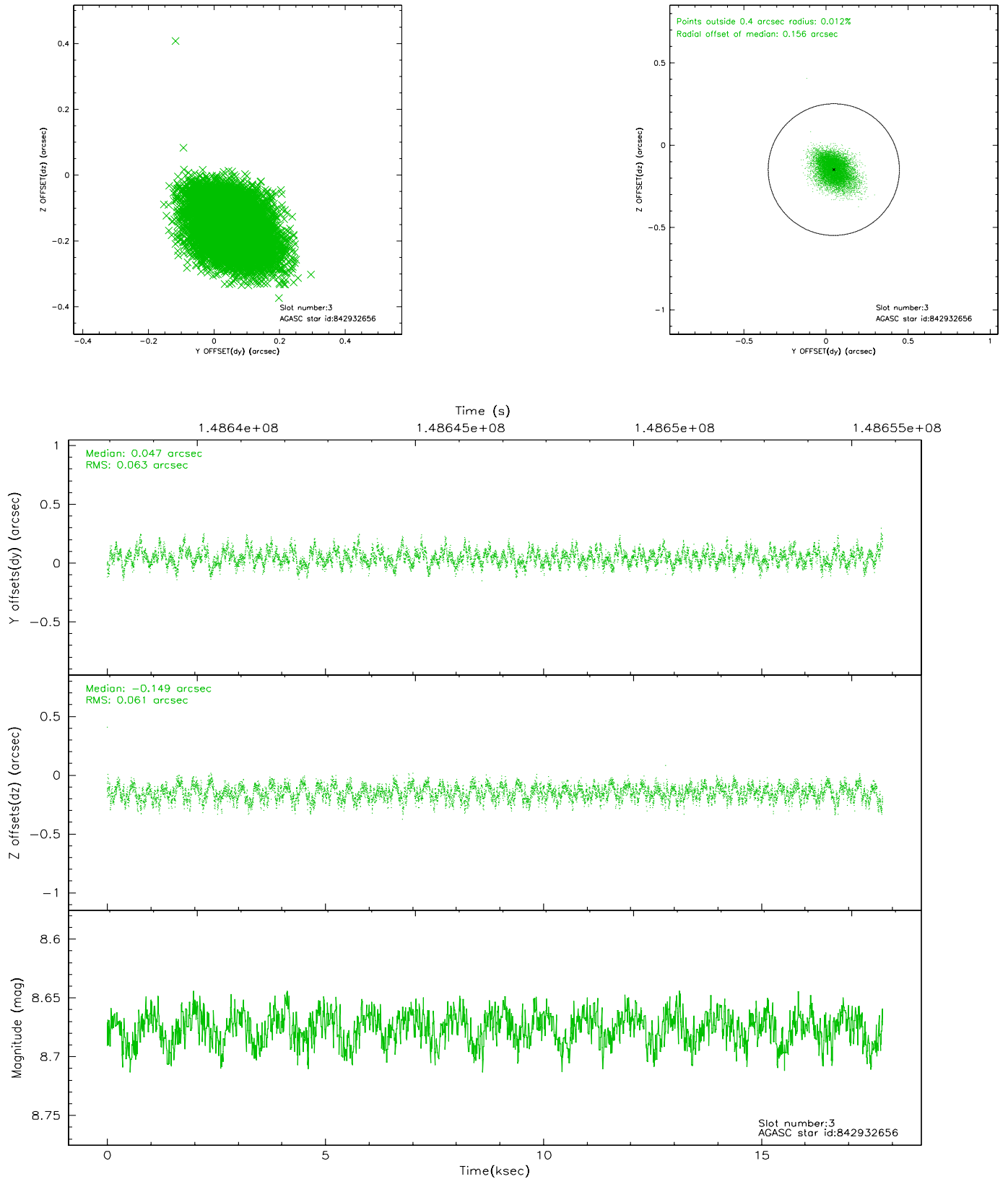


Slot Statistics

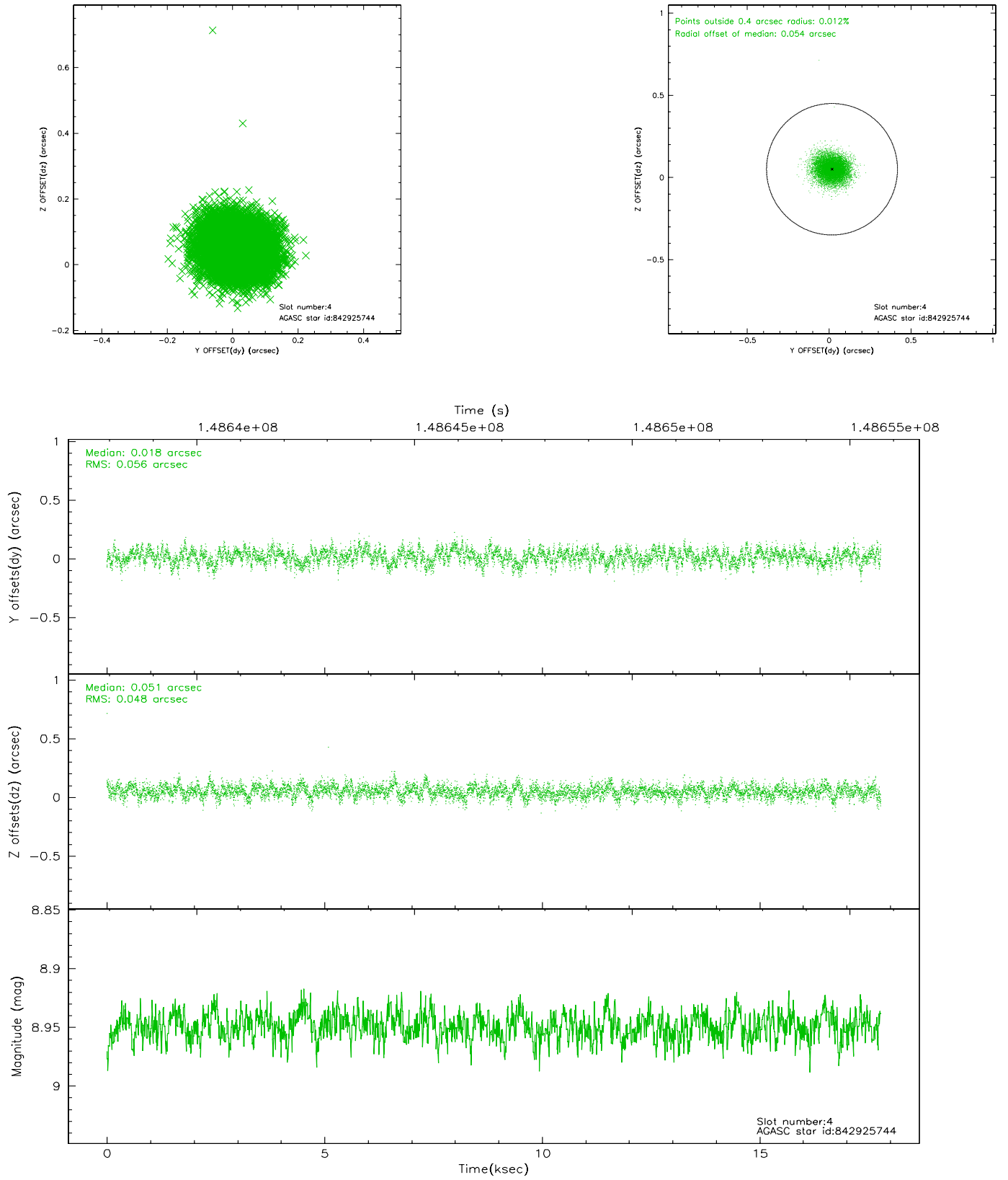
slot	status	id	mag	n_pts	med_dy	med_dz	dr1	dr2	ra	dec	mean_y	mean_z
0	FID	ACIS-I-1	7.24	4338	-0.006	-0.111	0.010	0.016	0.000000	0.000000	937.72	-951.33
1	FID	ACIS-I-3	7.44	4338	-0.030	0.200	0.008	0.013	0.000000	0.000000	55.33	-1084.49
2	FID	ACIS-I-5	7.23	4338	-0.054	-0.016	0.013	0.020	0.000000	0.000000	-1810.56	946.02
3	GUIDE	842932656	8.68	8672	0.047	-0.149	0.092	0.152	27.637719	-28.652964	-218.18	1836.22
4	GUIDE	842925744	8.95	8675	0.018	0.051	0.079	0.127	27.919747	-28.019400	2173.71	2365.84
5	GUIDE	842932952	9.44	8672	-0.148	0.164	0.100	0.161	28.708817	-29.119653	256.08	-1904.33
6	GUIDE	842931664	10.17	8664	0.031	-0.144	0.149	0.233	27.747775	-29.229916	-1748.42	389.41
7	GUIDE	842931752	10.05	8601	0.040	0.084	0.233	0.357	28.383600	-29.423806	-1220.93	-1657.42

2.4 Star Slots

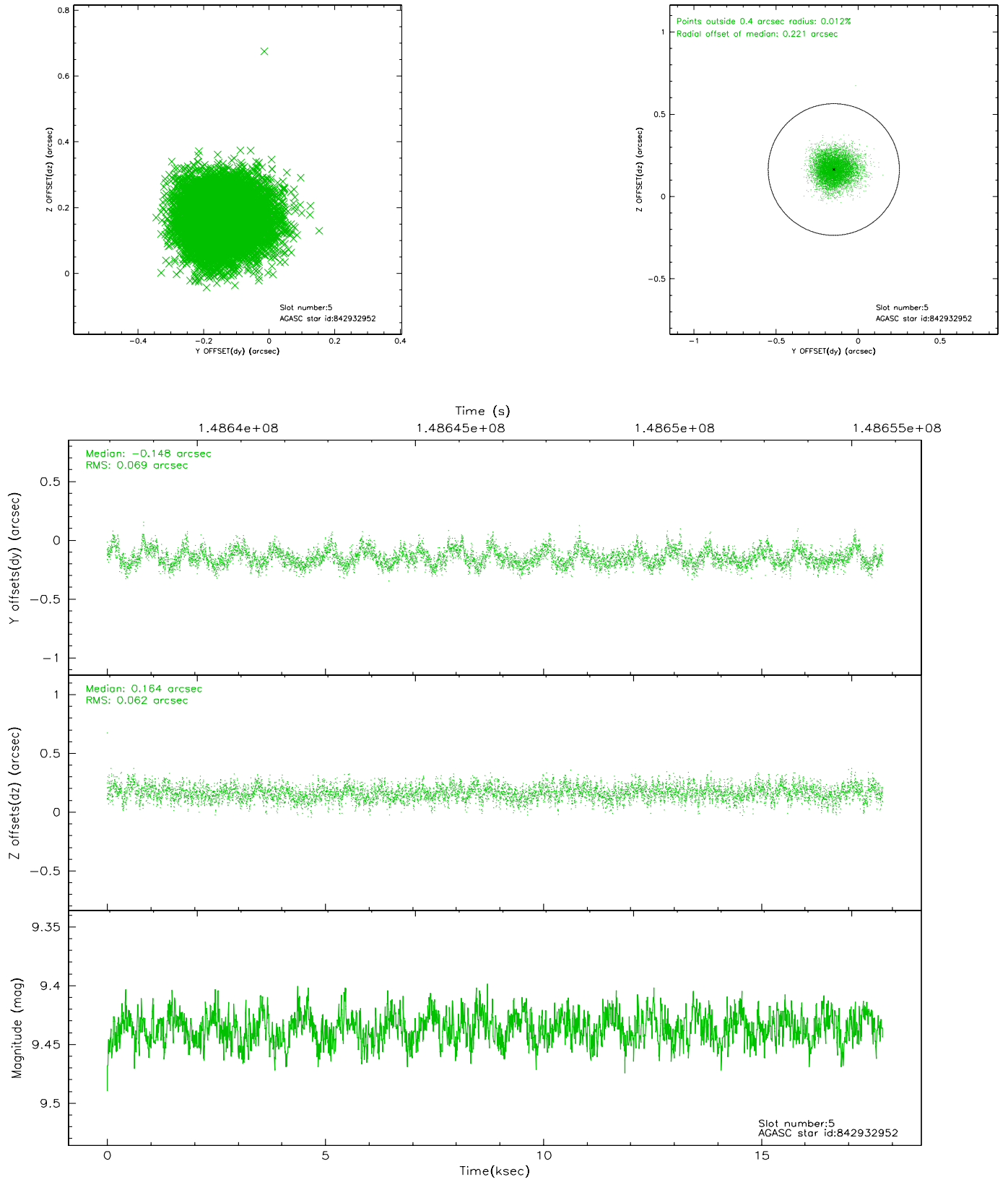
2.4.1 Slot 3



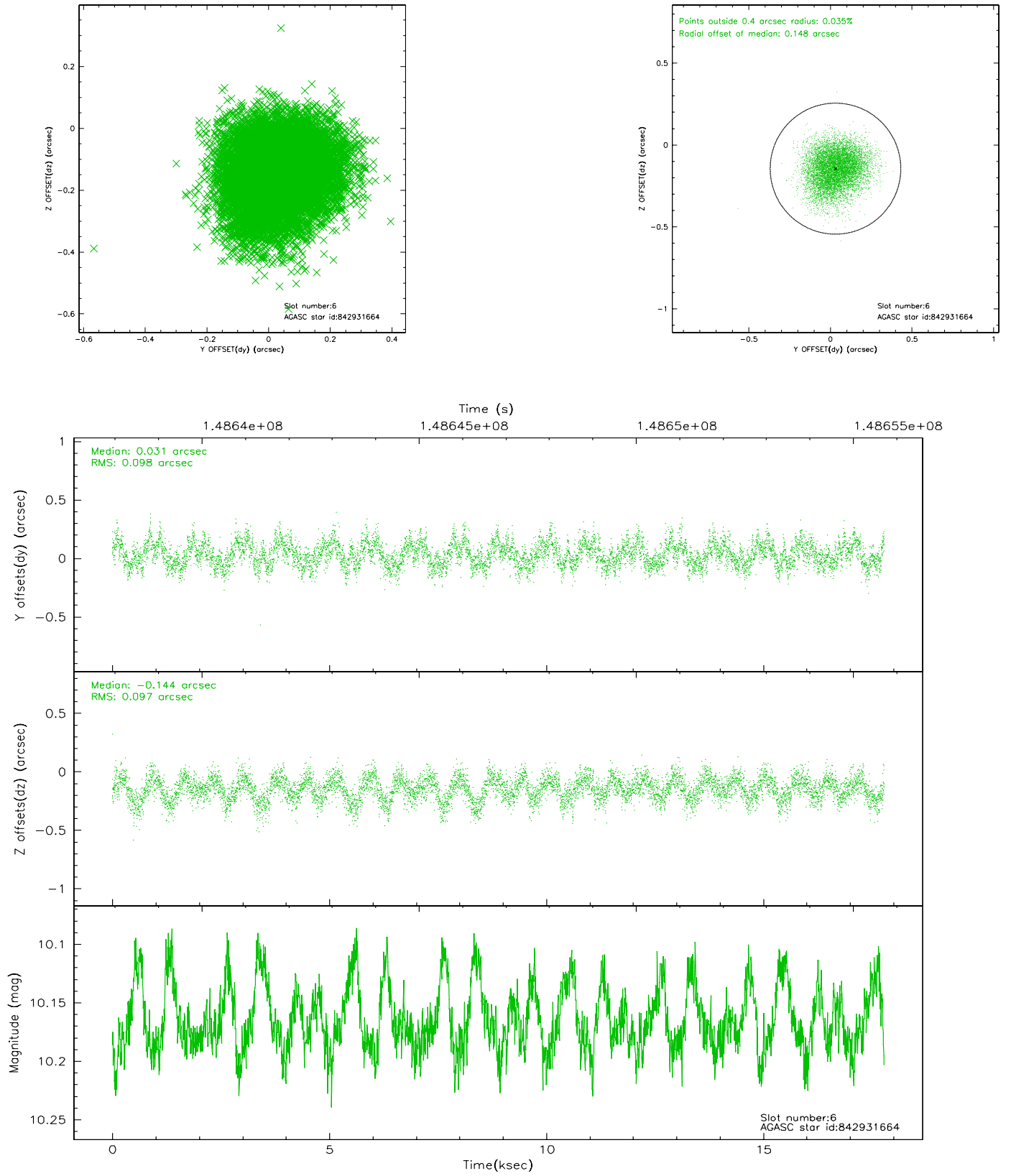
2.4.2 Slot 4



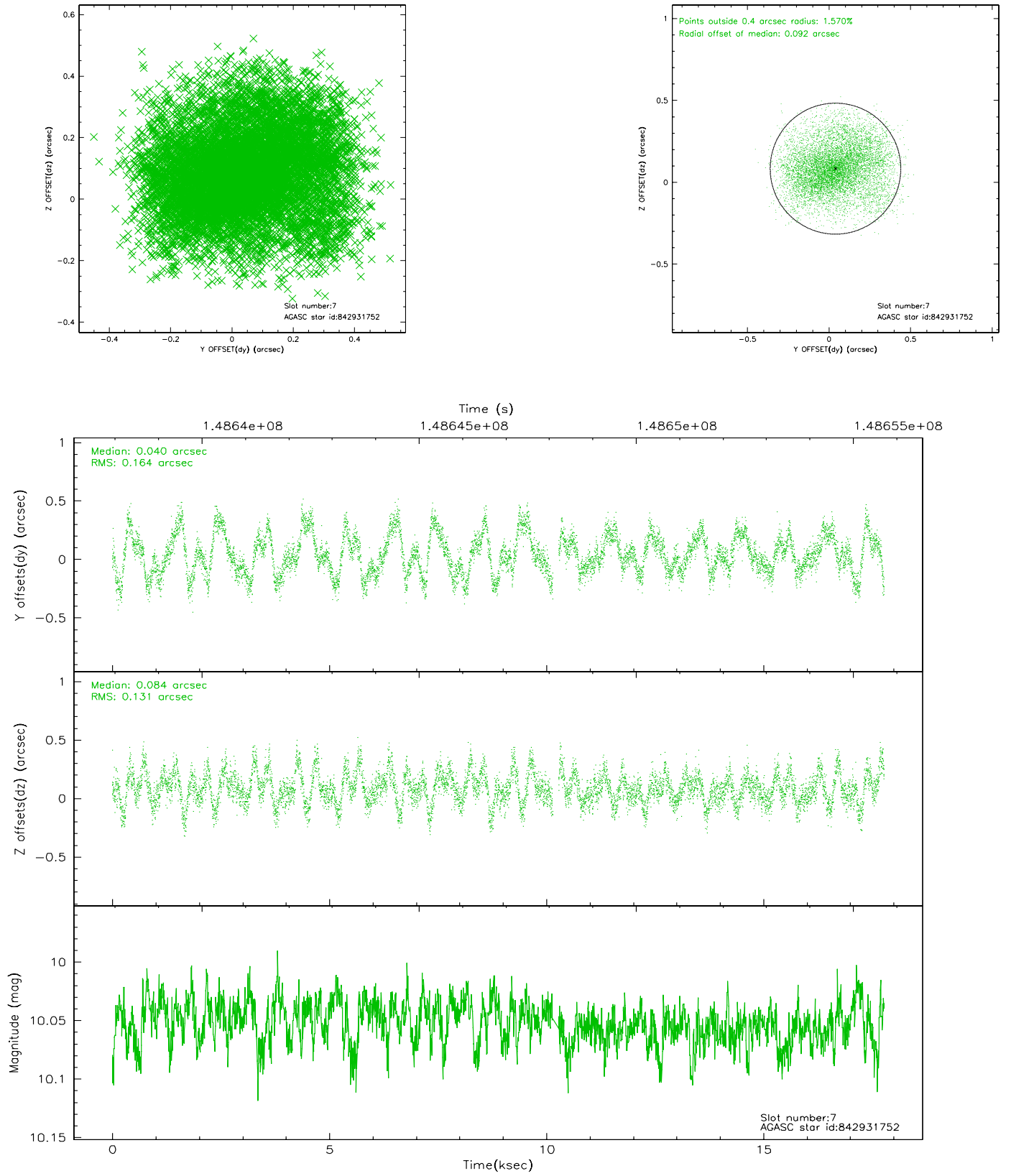
2.4.3 Slot 5



2.4.4 Slot 6

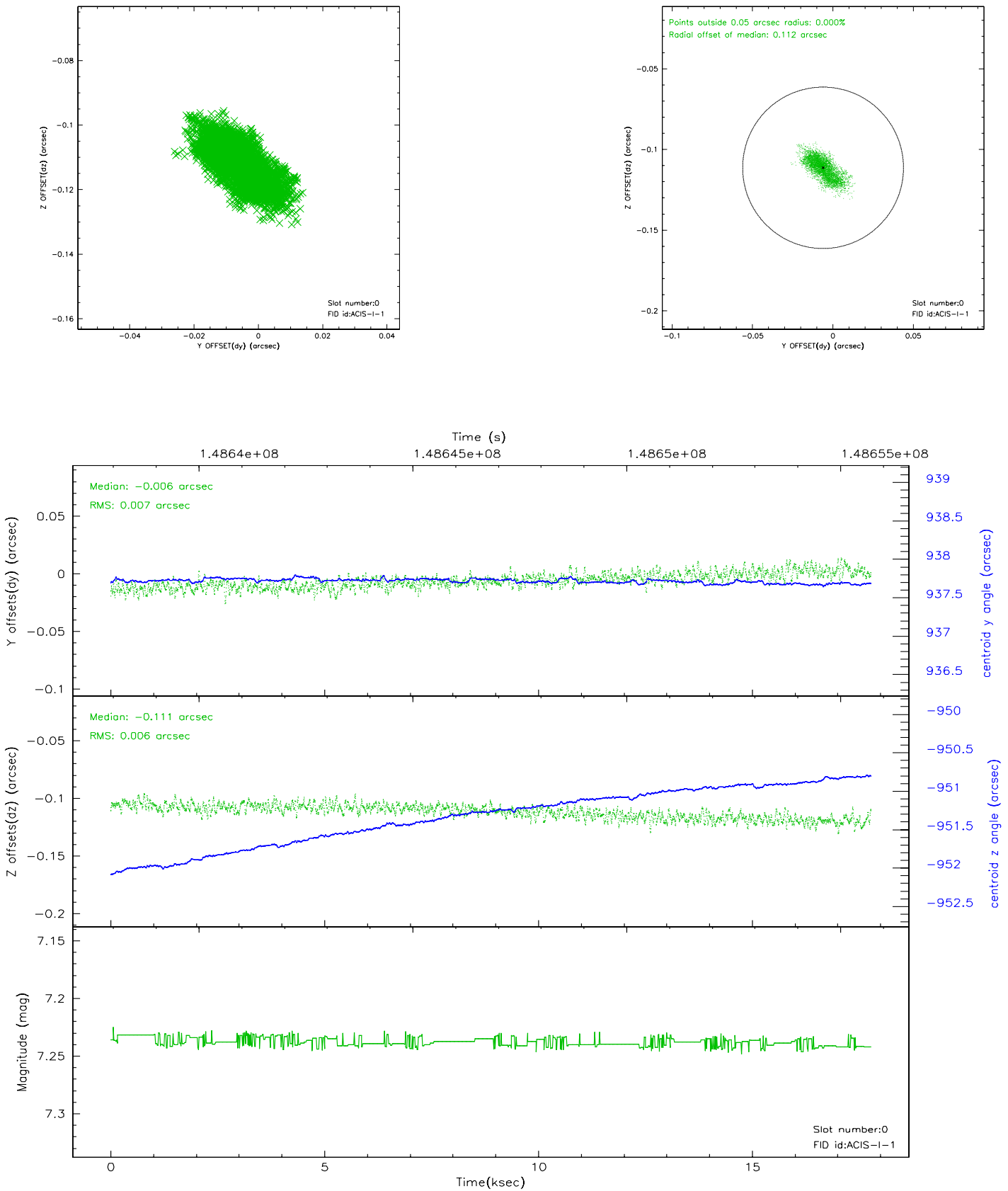


2.4.5 Slot 7

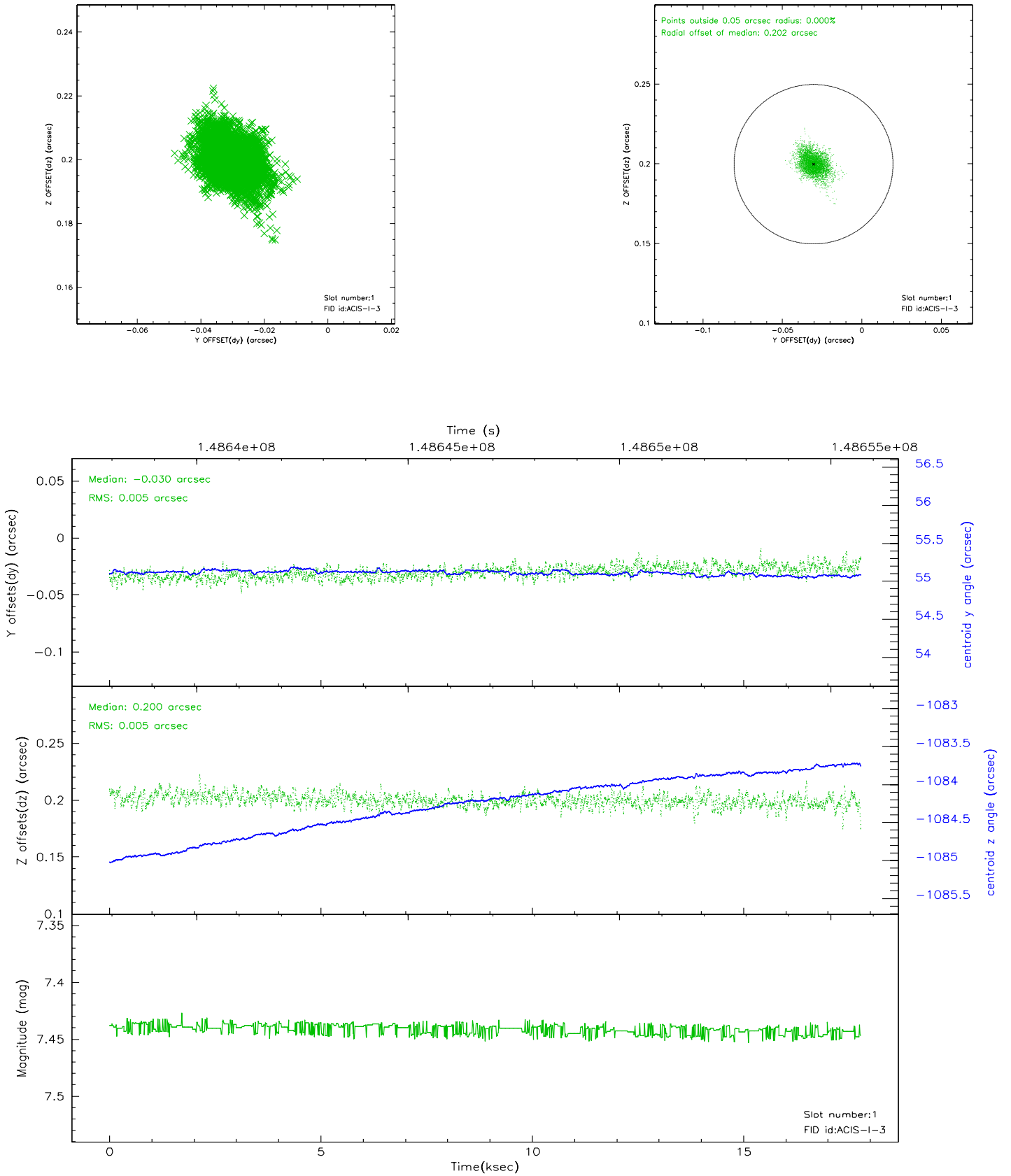


2.5 FID Slots

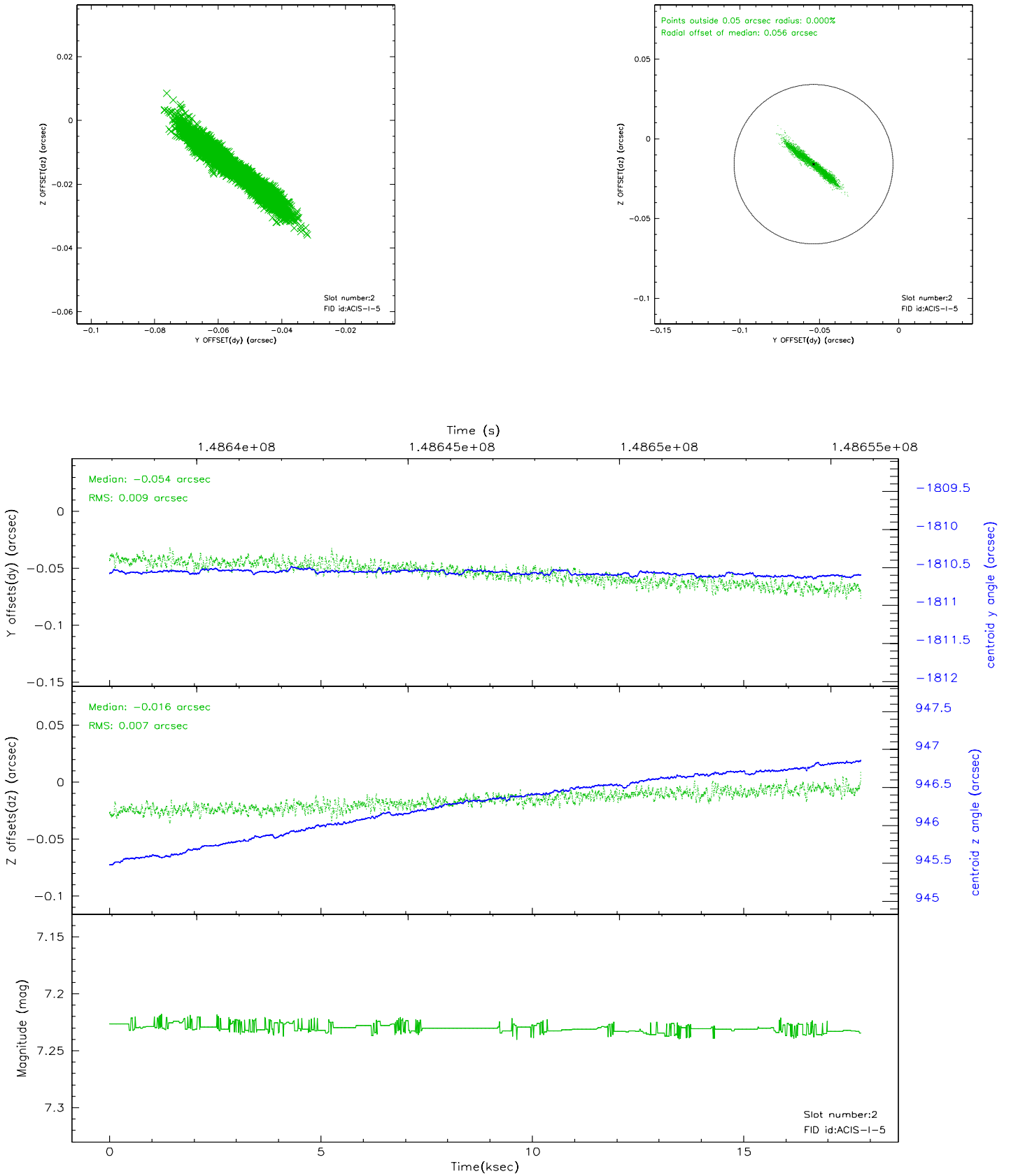
2.5.1 Slot 0



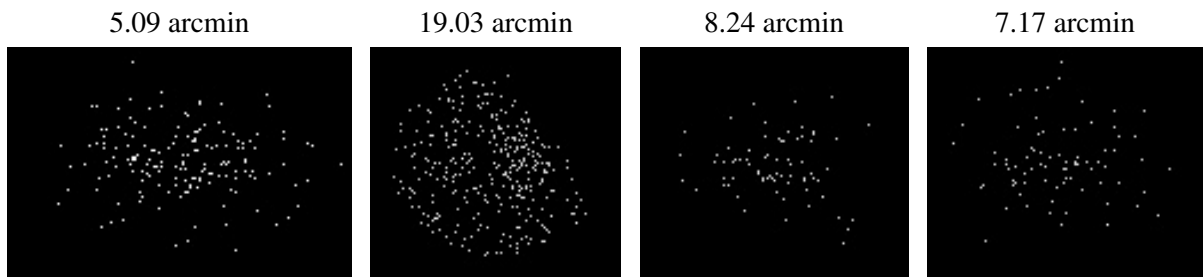
2.5.2 Slot 1



2.5.3 Slot 2



3 Point Sources



A Summary

A.1 Status

V&V Scientist	Jen Lauer
V&V Date (YYYY-MM-DD)	2006.10.04
V&V Edition	1
V&V Disposition and Status	OK
V&V Charge Time	17.775

A.2 Comments