

# V&V Reference Report

## L2 ASCDS Version : 7.6.9

Observation 3259 - L2 Version 001  
Chandra X-Ray Center

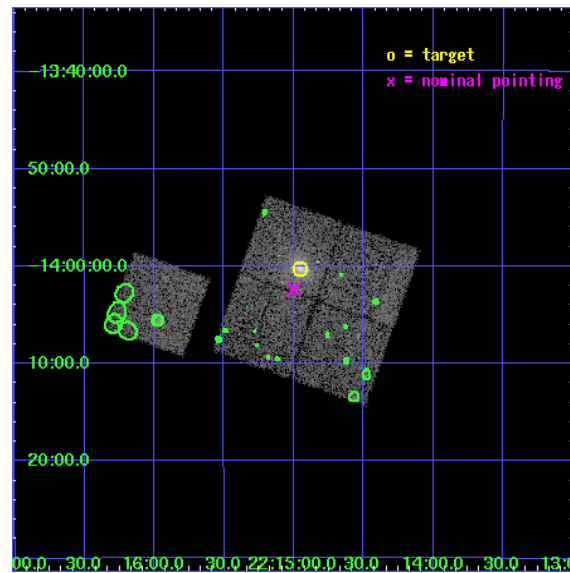
L2 Processing Date : Oct 15 2006

## Contents

<b>1</b>	<b>Front</b>	<b>2</b>
<b>2</b>	<b>OBI</b>	<b>3</b>
2.1	OBI . . . . .	3
2.1.1	Images . . . . .	3
2.1.2	Bias . . . . .	3
2.1.3	Parameters . . . . .	4
2.1.4	Events . . . . .	4
2.2	Compared Parameters . . . . .	5
2.3	Aspect . . . . .	6
2.4	Star Slots . . . . .	9
2.4.1	Slot 3 . . . . .	9
2.4.2	Slot 4 . . . . .	10
2.4.3	Slot 5 . . . . .	11
2.4.4	Slot 6 . . . . .	12
2.4.5	Slot 7 . . . . .	13
2.5	FID Slots . . . . .	14
2.5.1	Slot 0 . . . . .	14
2.5.2	Slot 1 . . . . .	15
2.5.3	Slot 2 . . . . .	16
<b>3</b>	<b>Point Sources</b>	<b>17</b>
<b>A</b>	<b>Summary</b>	<b>18</b>
A.1	Status . . . . .	18
A.2	Comments . . . . .	18

# 1 Front

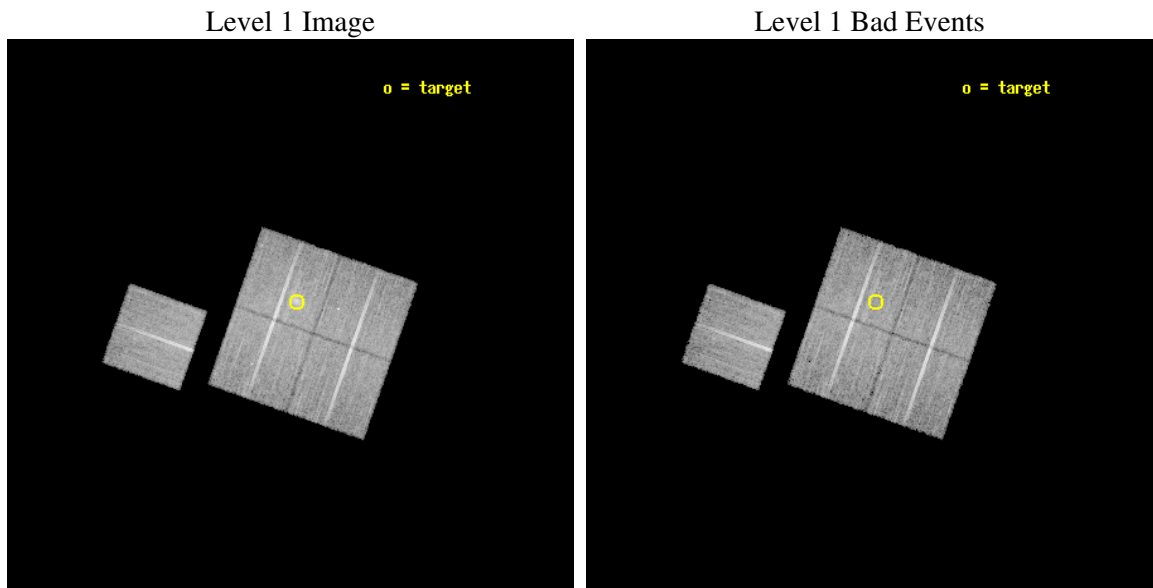
seq_num	800259
obs_id	3259
title	OBSERVATION OF MACS CLUSTERS, 0.45
observer	DR. LEON VANSPEYBROECK
object	MACS-J2214.9-1359
dtcycle	0
cycle	P
ra_targ	333.73875
dec_targ	-14.003889
ra_nom	333.74979913003
dec_nom	-14.039977486326
roll_nom	289.49488348974
revision	2
ontime	19728.358971924
liveltime	19470.593438149
ontime0	19725.218001693
ontime1	19731.499962062
ontime2	19731.499962062
ontime3	19728.358971924
ontime6	19731.499962062
l2events	50007



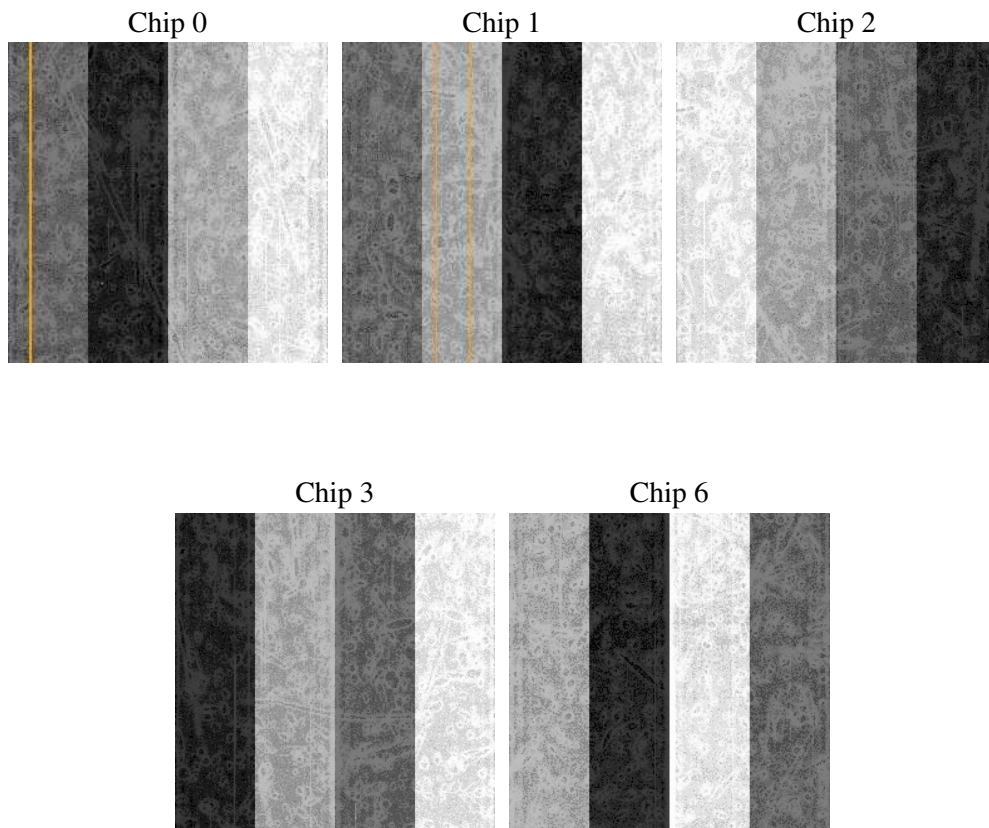
## 2 OBI

### 2.1 OBI

#### 2.1.1 Images



#### 2.1.2 Bias



### 2.1.3 Parameters

obi_num	1
ascdsver	7.6.9
caldbver	3.2.3
date	2006-10-16T01:19:22
revision	2

sched_exp_time	19708.751000
ontime	19734.909134418
ontime0	19731.768194109
ontime1	19738.050154477
ontime2	19738.050154477
ontime3	19734.909134418
ontime6	19738.050154477
l1events	505848

### 2.1.4 Events

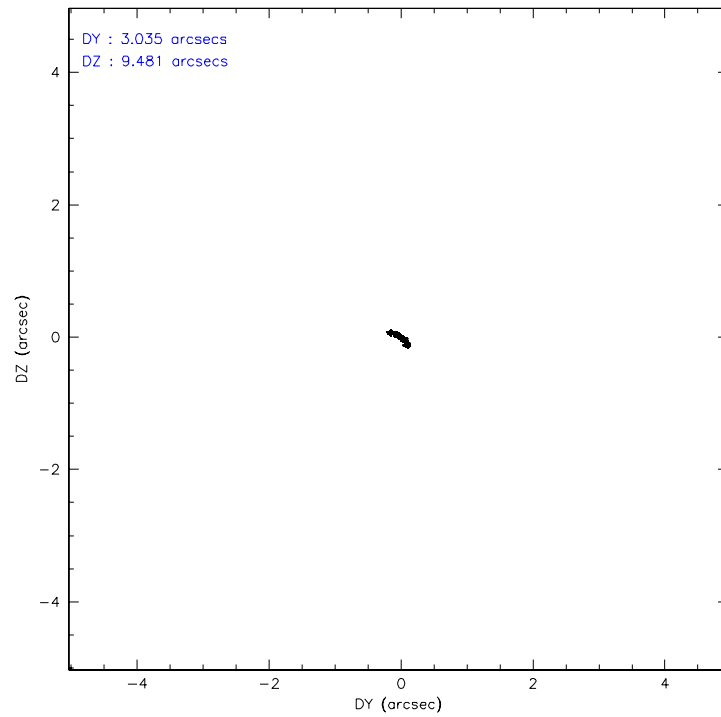
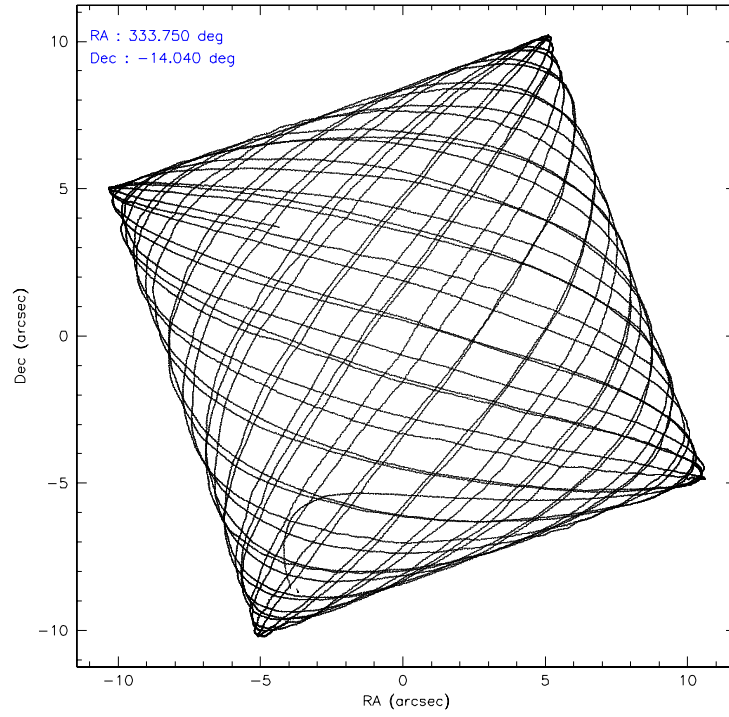
	ccd 0	ccd 1	ccd 2	ccd 3	ccd 6
level 1 events	95096	96680	104959	107813	101300
rejected events	84561	84638	94579	92655	90428
rejected %	88%	87%	90%	85%	89%

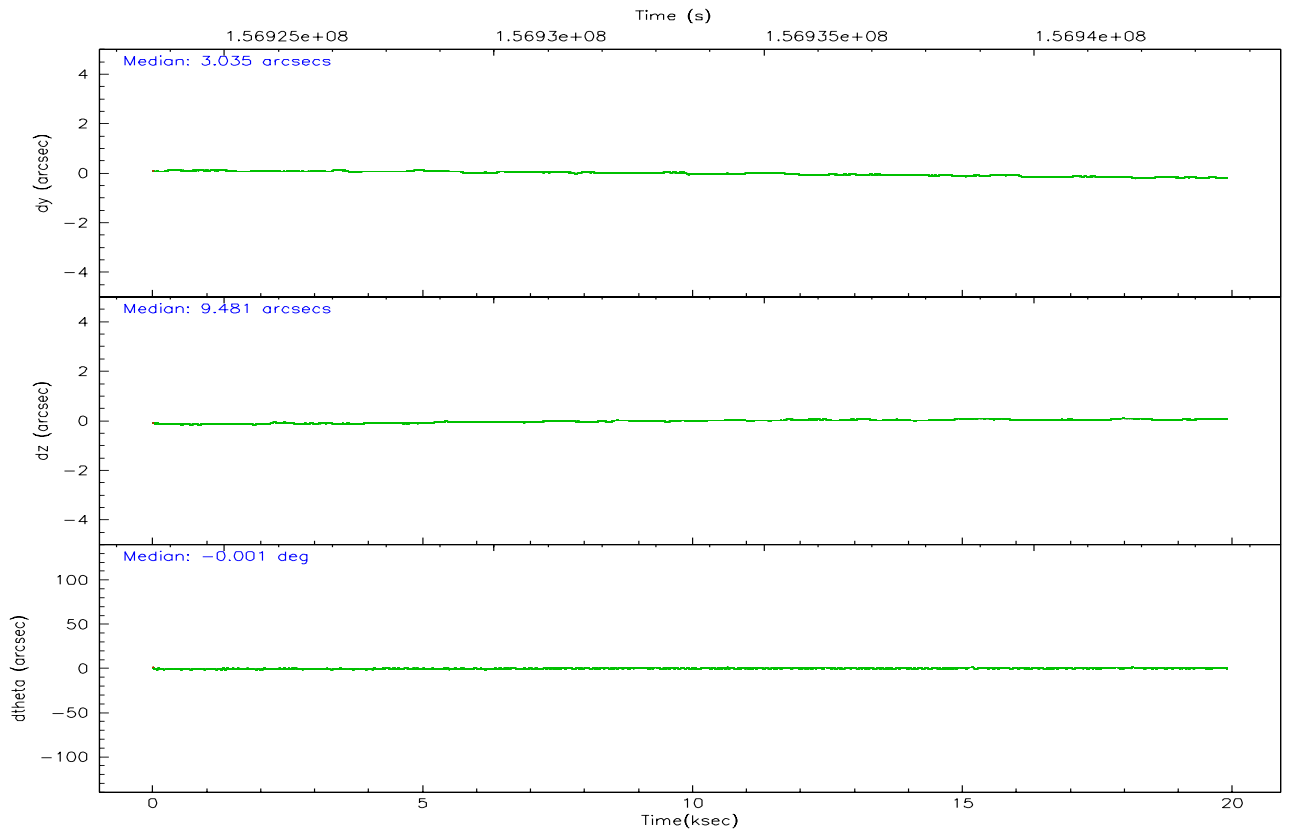
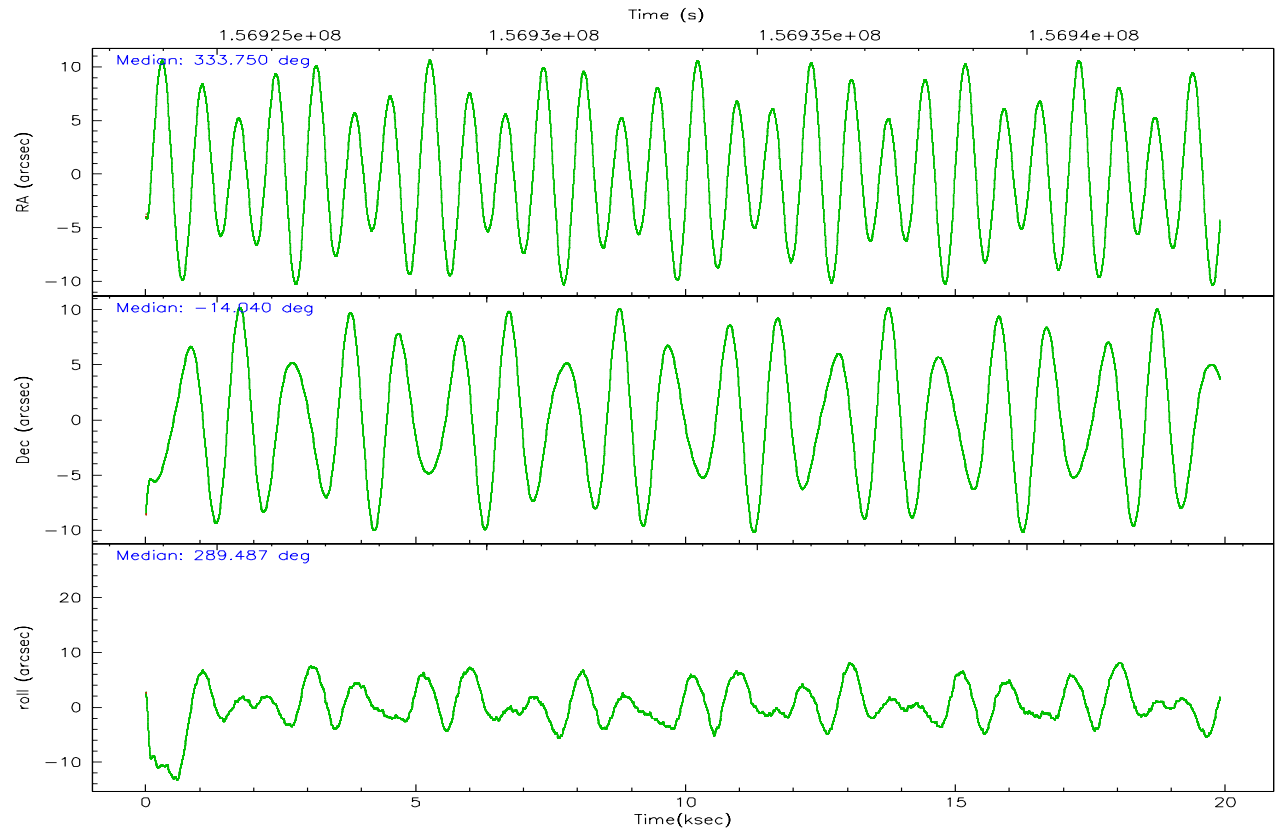
	ccd 0	ccd 1	ccd 2	ccd 3	ccd 6
grade 0 events	3964	4851	4102	8145	4130
	4%	5%	3%	7%	4%
grade 1 events	35	42	53	65	45
	0%	0%	0%	0%	0%
grade 2 events	2439	2435	2292	2461	2137
	2%	2%	2%	2%	2%
grade 3 events	1211	1315	1078	1287	1191
	1%	1%	1%	1%	1%
grade 4 events	1109	1212	1142	1300	1214
	1%	1%	1%	1%	1%
grade 5 events	3364	3663	3205	3865	3842
	3%	3%	3%	3%	3%
grade 6 events	1818	2232	1769	1971	2202
	1%	2%	1%	1%	2%
grade 7 events	81156	80930	91318	88719	86539
	85%	83%	87%	82%	85%

## 2.2 Compared Parameters

Parameter	Planned	Actual	Parameter	Planned	Actual
Instrument	ACIS	ACIS	Obspar format version number	6	6
Detector	ACIS-01236	ACIS-01236	Obspar file type	PREDICTED	ACTUAL
Grating	NONE	NONE	Obspar update status	NONE	UPDATED
Data mode	VFAINT	VFAINT	Number of optional ACIS chips dropped	0	0
Observation mode	POINTING	POINTING	On-chip summing requested	N	N
Pointing RA	333.728274	333.7497991300276	Subarray requested	NONE	NONE
Pointing Dec	-14.022281	-14.03997748632555	Alternating exposures requested	N	N
Pointing Roll	289.280974	289.4948834897415	Primary exposure time	0.000000	3.1
SIM focus pos (mm)	-0.782348	-0.7809083437167272			
SIM defocus (mm)	0	0.001439871863259334			
SIM translation stage pos (mm)	-227.742463	-227.734108438797			
SIM translation stage offset (mm)	-5.85	-5.858344564132665			
Observation start time	156923876.184000	156922831.25704			
Observation start date	2002-12-22T05:56:52	2002-12-22T05:40:31			
Observation end time	156943585.184000	156943899.62042			
Observation end date	2002-12-22T11:25:21	2002-12-22T11:31:39			
Read mode	TIMED	TIMED			

## 2.3 Aspect





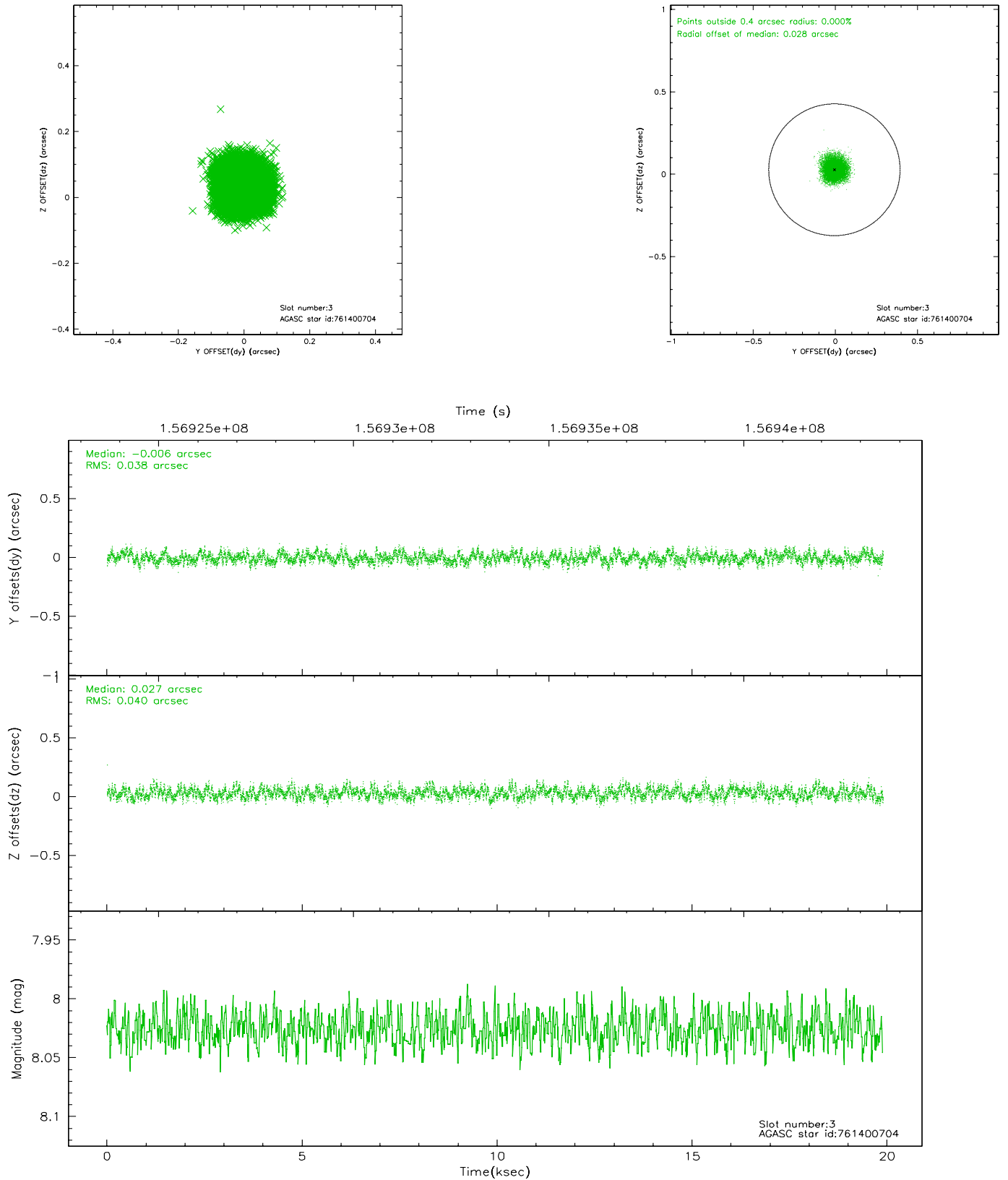
### Slot Statistics

slot	status	id	mag	n_pts	med_dy	med_dz	dr1	dr2	ra	dec	mean_y	mean_z
0	FID	ACIS-I-1	7.24	4854	0.023	0.006	0.006	0.011	0.000000	0.000000	936.68	-953.17
1	FID	ACIS-I-5	7.23	4853	-0.103	0.060	0.007	0.012	0.000000	0.000000	-1811.43	944.29
2	FID	ACIS-I-6	7.25	4853	-0.011	0.004	0.008	0.013	0.000000	0.000000	402.01	1588.93
3	GUIDE	761400704	8.03	9705	-0.006	0.027	0.059	0.093	334.287647	-14.192394	1225.00	1639.98
4	GUIDE	761401872	9.13	9706	-0.032	-0.123	0.073	0.118	333.203729	-13.899520	-1019.88	-1585.24
5	GUIDE	761405288	9.60	9697	0.125	-0.053	0.108	0.177	334.101900	-14.554599	2240.02	595.86
6	GUIDE	761405472	9.86	9706	-0.063	0.058	0.106	0.171	333.339775	-14.227255	250.61	-1523.56
7	GUIDE	761400872	8.91	9699	-0.027	0.089	0.073	0.117	334.309730	-14.157994	1133.84	1753.70

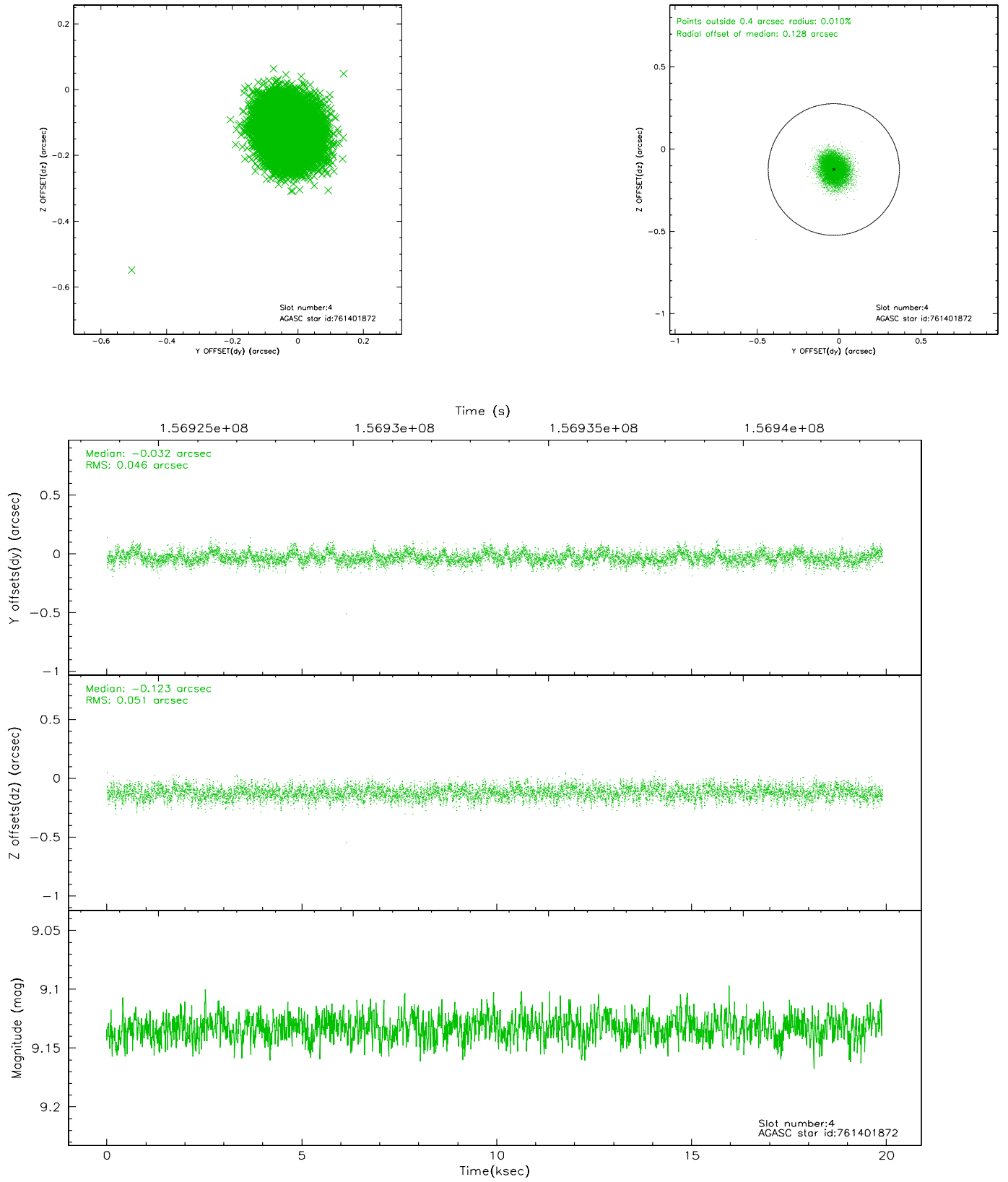


## 2.4 Star Slots

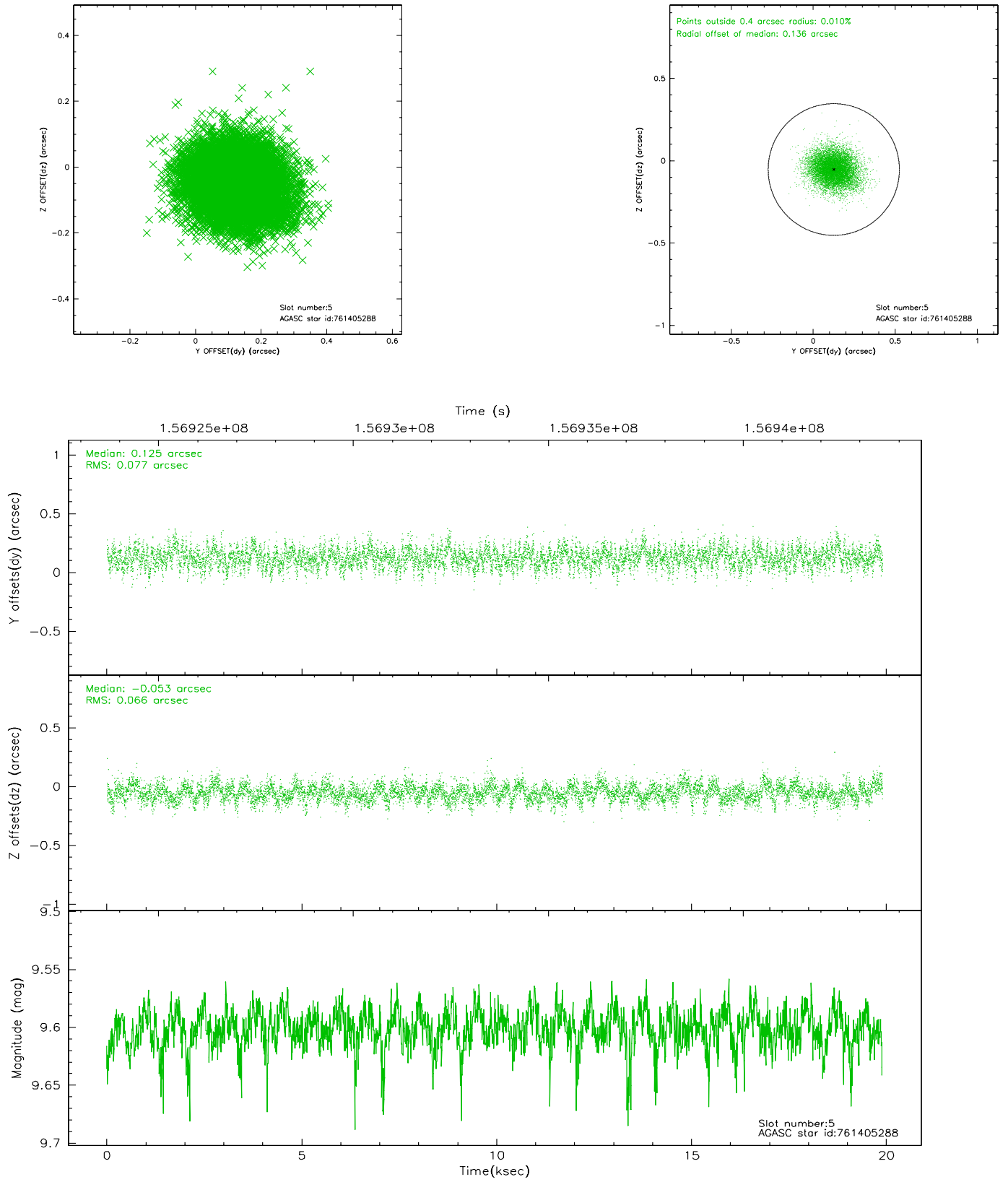
### 2.4.1 Slot 3



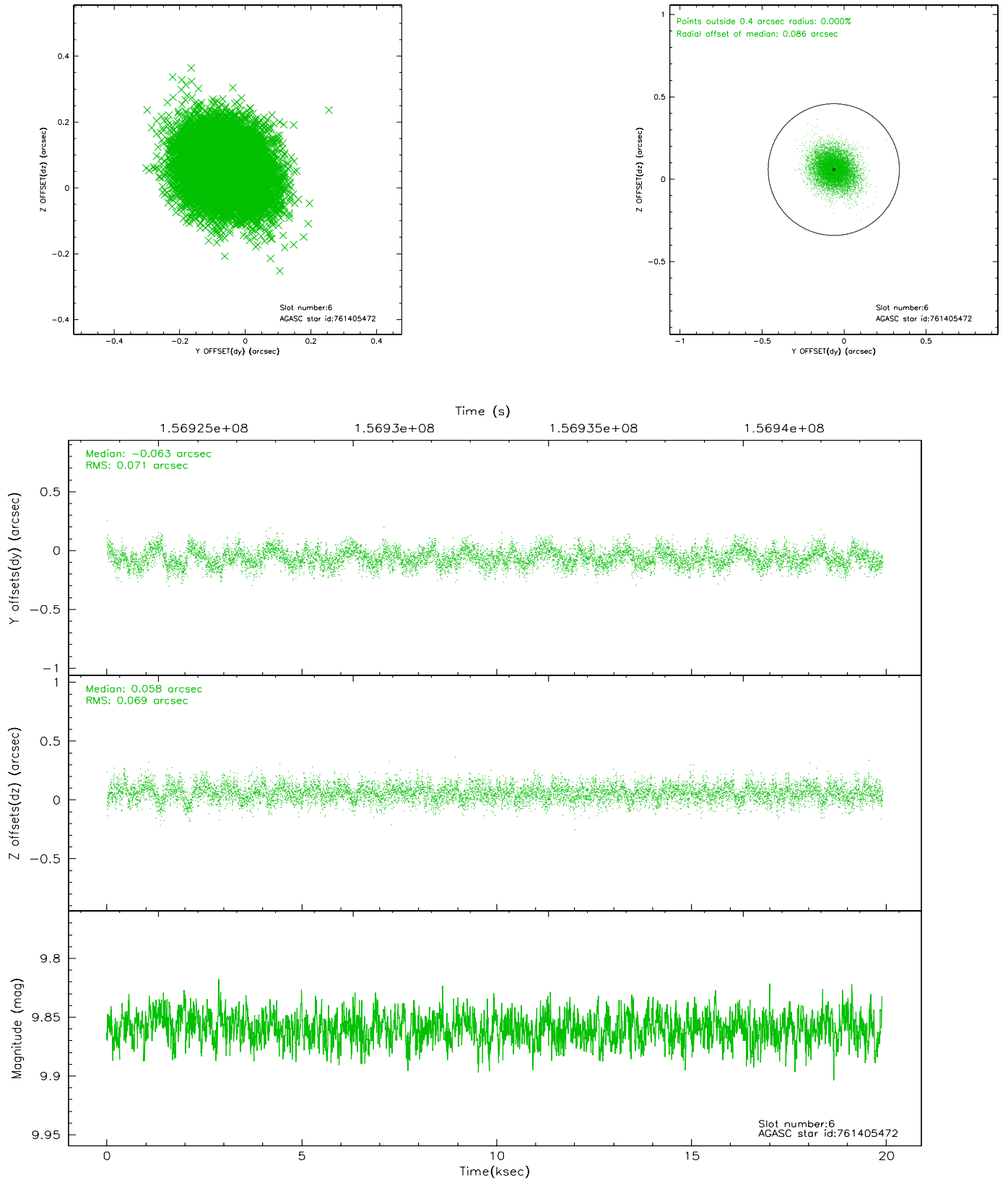
## 2.4.2 Slot 4



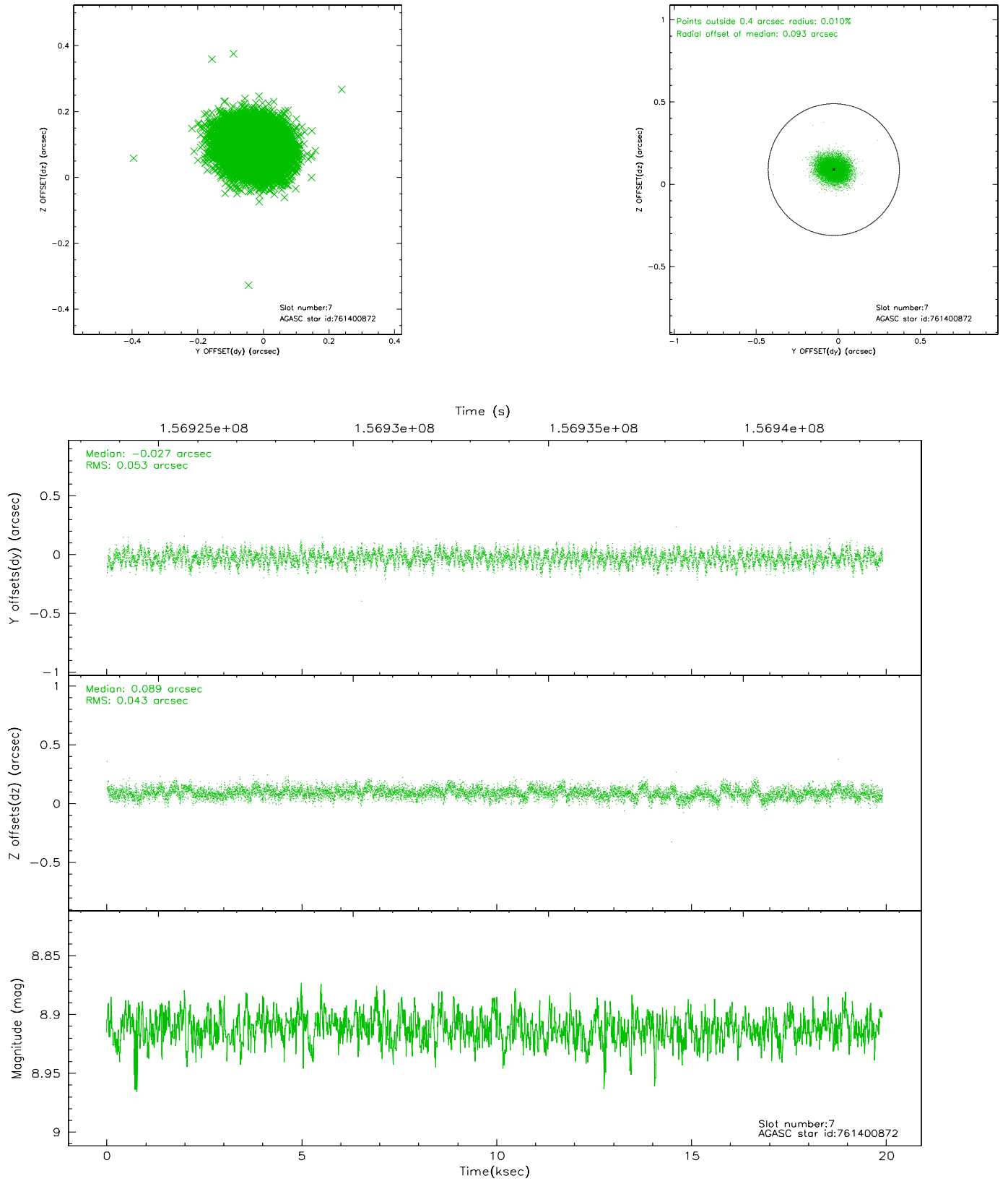
### 2.4.3 Slot 5



## 2.4.4 Slot 6

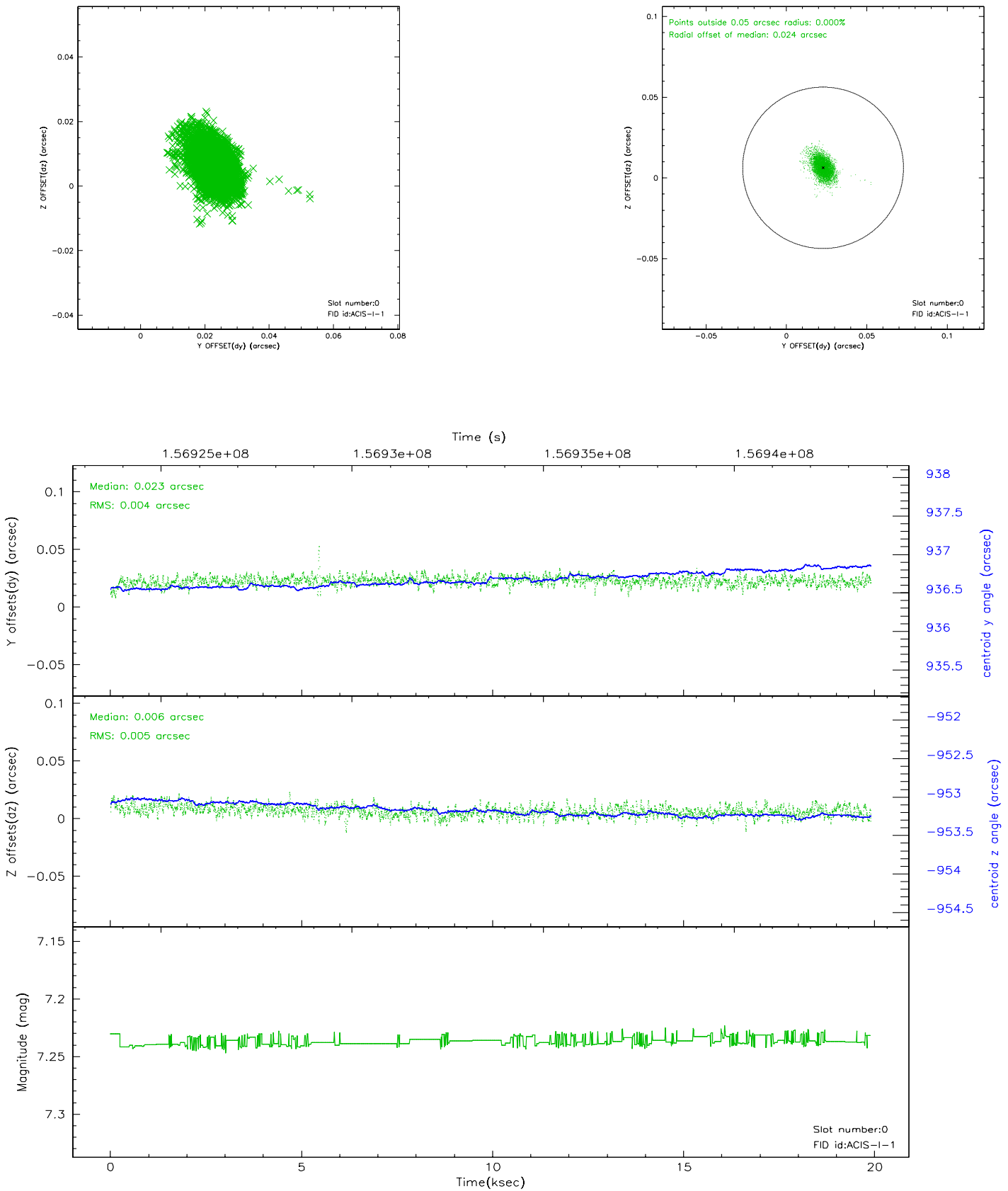


## 2.4.5 Slot 7

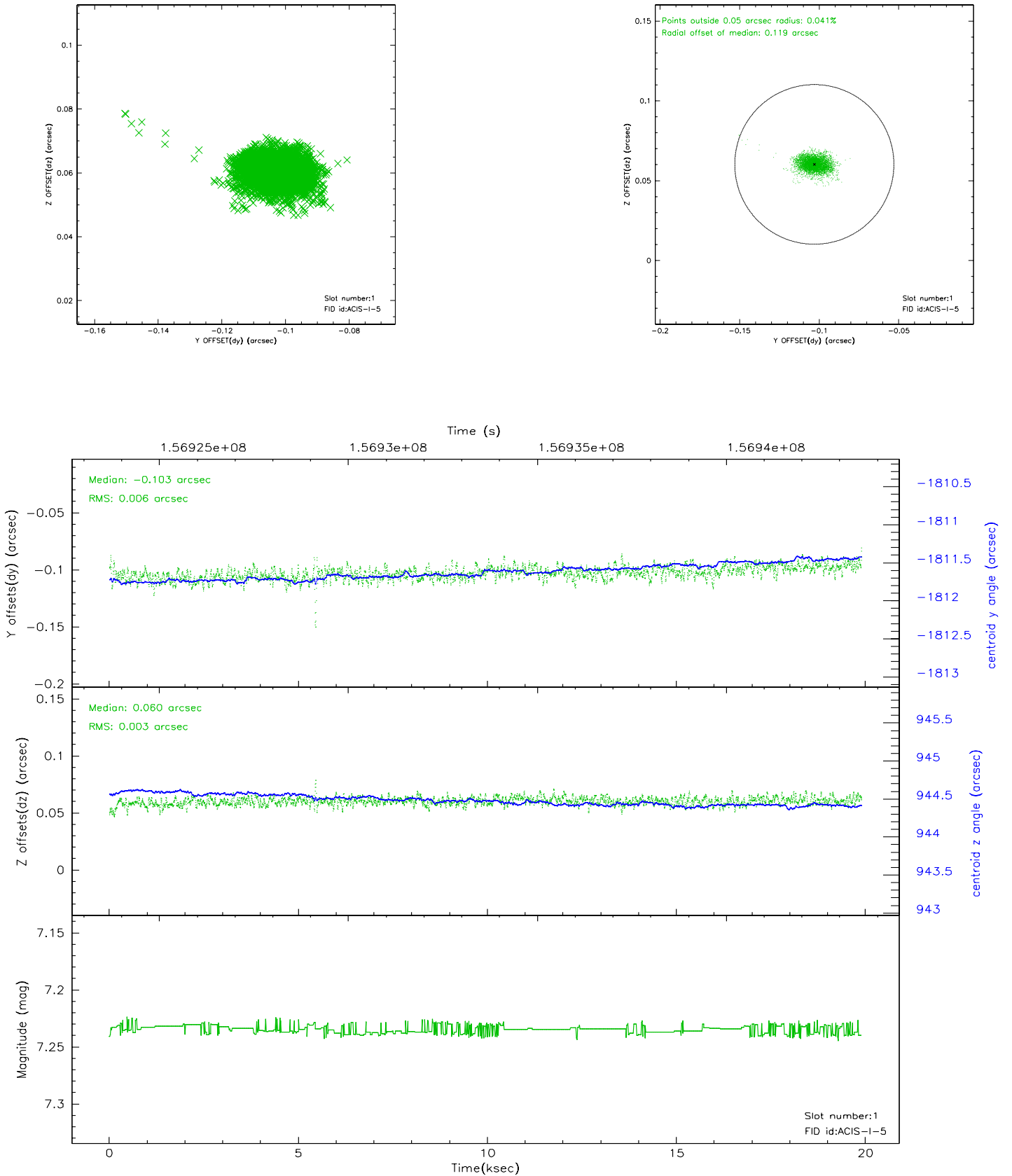


## 2.5 FID Slots

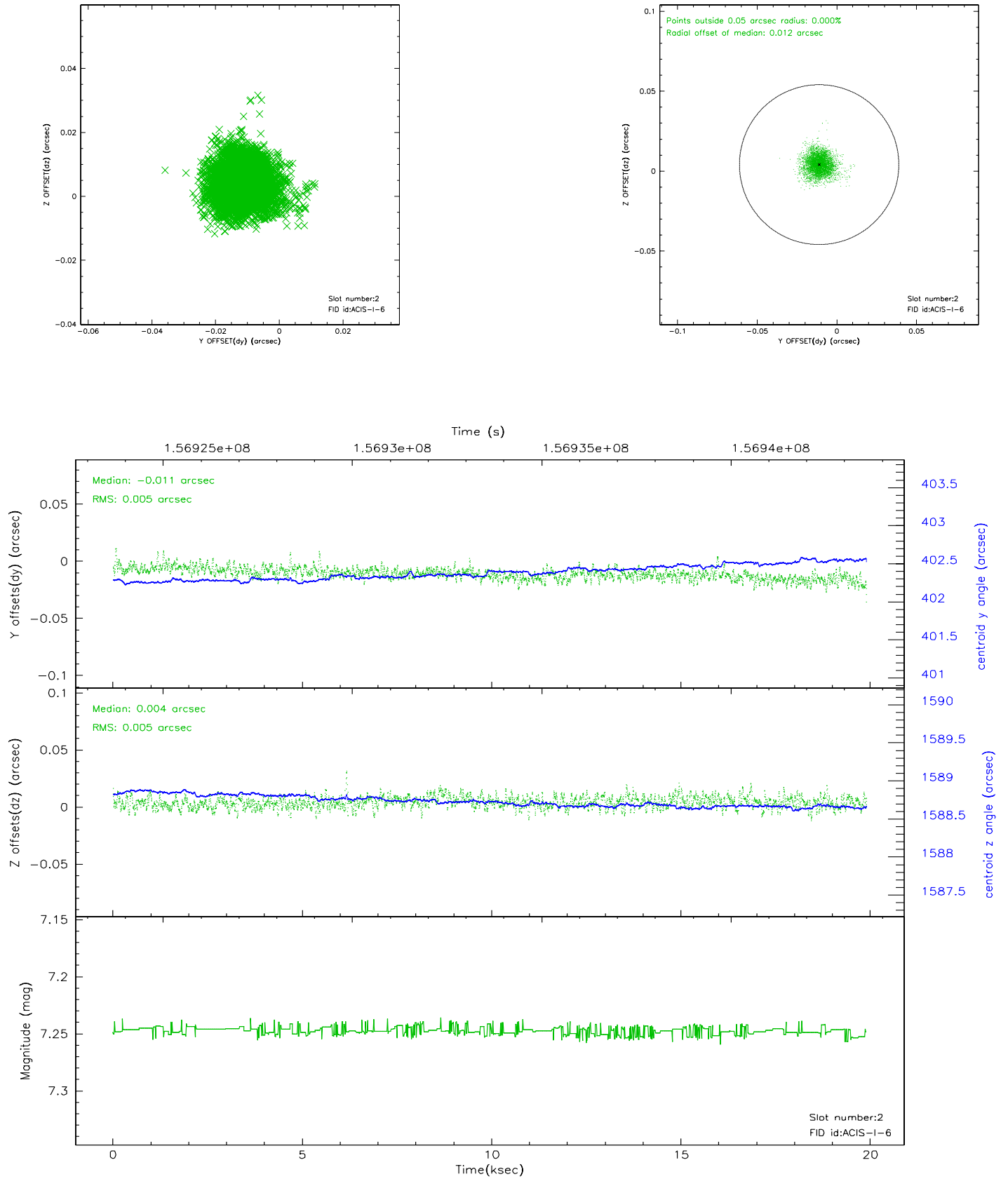
### 2.5.1 Slot 0



## 2.5.2 Slot 1

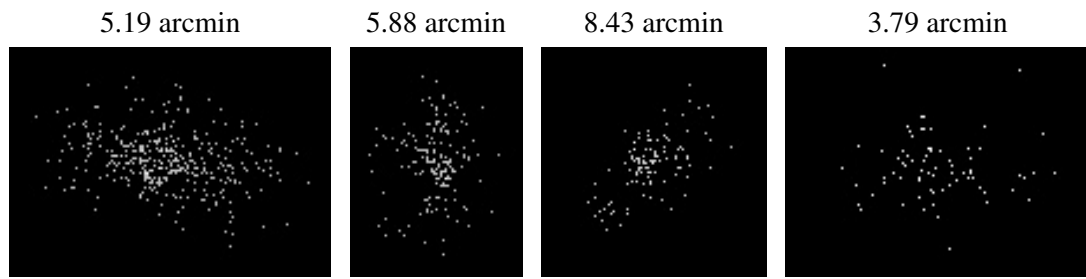


### 2.5.3 Slot 2





### 3 Point Sources



## A Summary

### A.1 Status

V&V Scientist	Beth Sundheim
V&V Date (YYYY-MM-DD)	2006.10.16
V&V Edition	1
V&V Disposition and Status	OK
V&V Charge Time	19.731

### A.2 Comments