

V&V Reference Report

L2 ASCDS Version : 8.4.5

Observation 3257 - L2 Version 3
Chandra X-Ray Center

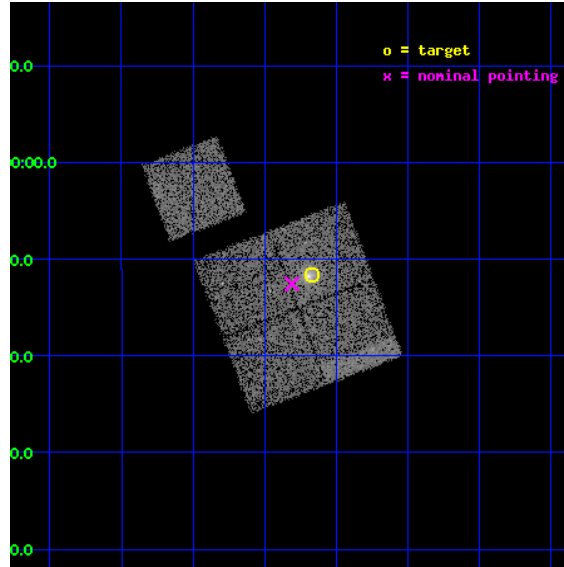
L2 Processing Date : Sep 28 2012

Contents

1	Front	2
2	OBI	3
2.1	OBI	3
2.1.1	Images	3
2.1.2	Bias	3
2.1.3	Parameters	4
2.1.4	Events	4
2.2	Compared Parameters	5
2.3	Aspect	6
2.4	Star Slots	9
2.4.1	Slot 3	9
2.4.2	Slot 4	10
2.4.3	Slot 5	11
2.4.4	Slot 6	12
2.4.5	Slot 7	13
2.5	FID Slots	14
2.5.1	Slot 0	14
2.5.2	Slot 1	15
2.5.3	Slot 2	16
A	Summary	17
A.1	Status	17
A.2	Comments	17

1 Front

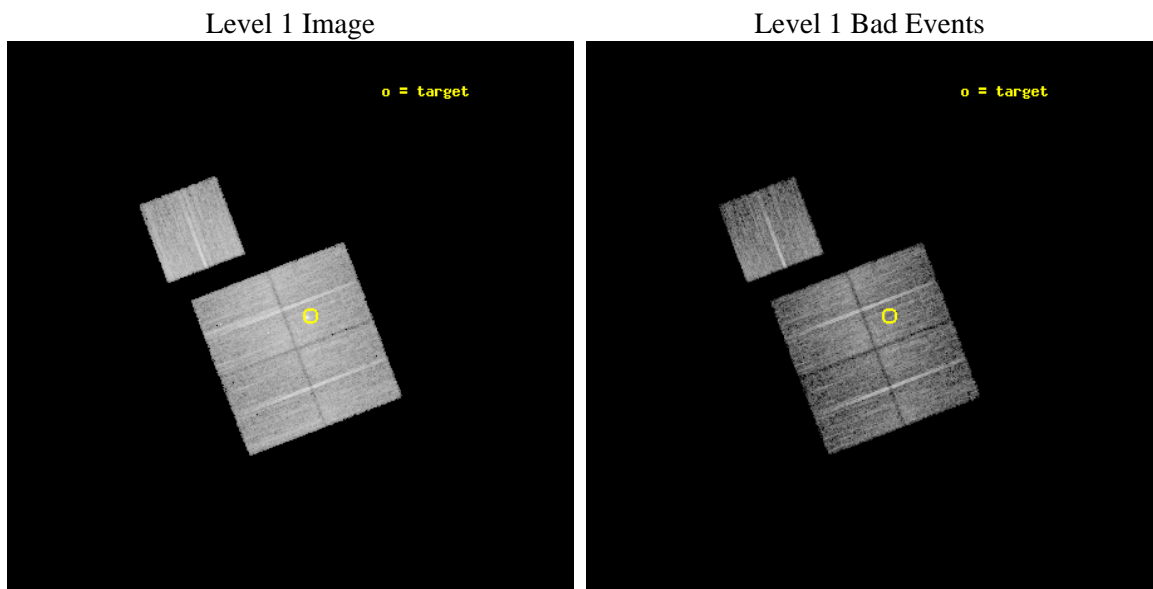
seq_num	800257	Sequence number
obs_id	3257	Observation id
title	OBSERVATION OF MACS CLUSTERS, 0.45	Proposal title
observer	DR. LEON VANSPEYBROECK	Principal investigator
object	MACS-J0329.6-0211	Source name
dtcycle	0	
cycle	P	events from which exps? Prim/Second/Both
ra_targ	52.417917	Observer's specified target RA [deg]
dec_targ	-2.194167	Observer's specified target Dec [deg]
ra_nom	52.452464016636	Nominal RA [deg]
dec_nom	-2.2093549159426	Nominal Dec [deg]
roll_nom	339.20441806032	Nominal Roll [deg]
revision	3	Processing version of data
ontime	9991.2999807894	Sum of GTIs [s]
livetime	9860.7562910524	Livetime [s]
ontime0	9991.2999807894	Sum of GTIs [s]
ontime1	9985.0180203766	Sum of GTIs [s]
ontime2	9991.2999807894	Sum of GTIs [s]
ontime3	9991.2999807894	Sum of GTIs [s]
ontime6	9985.0180303752	Sum of GTIs [s]
l2events	35048	Number of level 2 events



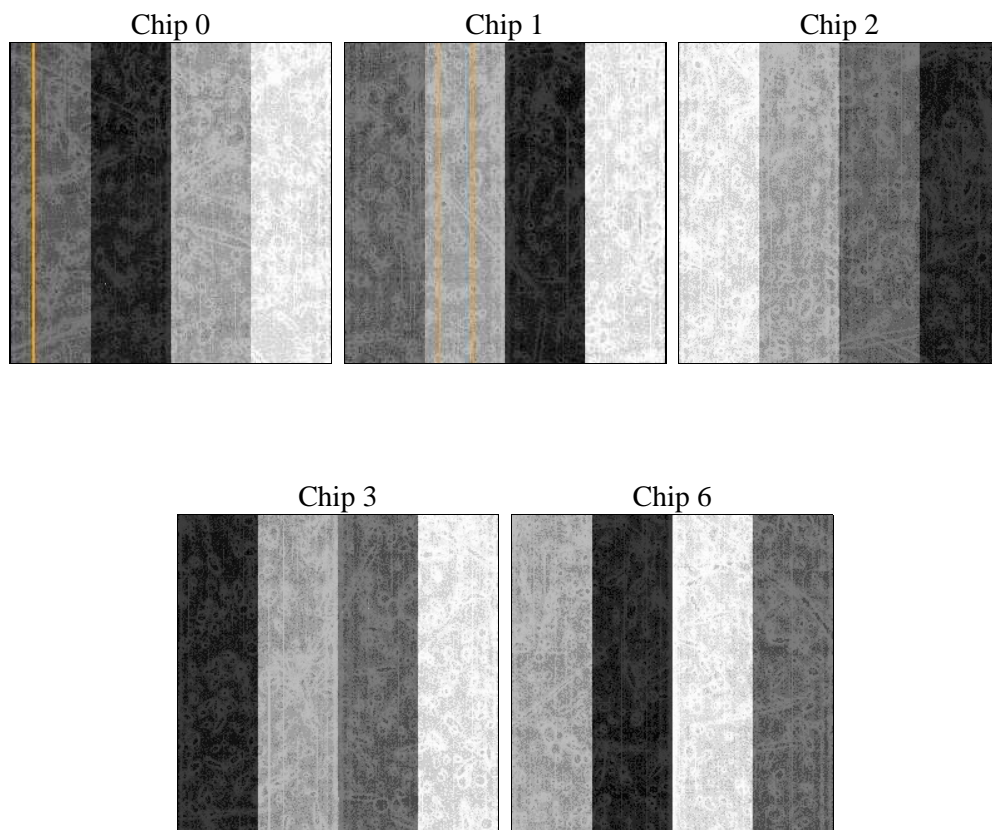
2 OBI

2.1 OBI

2.1.1 Images



2.1.2 Bias



2.1.3 Parameters

obi_num	1	Obi number	sched_exp_time	9845.587000	[s] Scheduled observation exposure time
ascdsver	8.4.5	Processing system revision	ontime	9991.2999807894	Sum of GTIs [s]
caldsver	4.5.2	 	ontime0	9991.2999807894	Sum of GTIs [s]
date	2012-09-28T04:36:09	Date and time of file creation	ontime1	9985.0180203766	Sum of GTIs [s]
revision	3	Processing version of data	ontime2	9991.2999807894	Sum of GTIs [s]
			ontime3	9991.2999807894	Sum of GTIs [s]
			ontime6	9985.0180303752	Sum of GTIs [s]
			l1events	456844	Number of level 1 events

2.1.4 Events

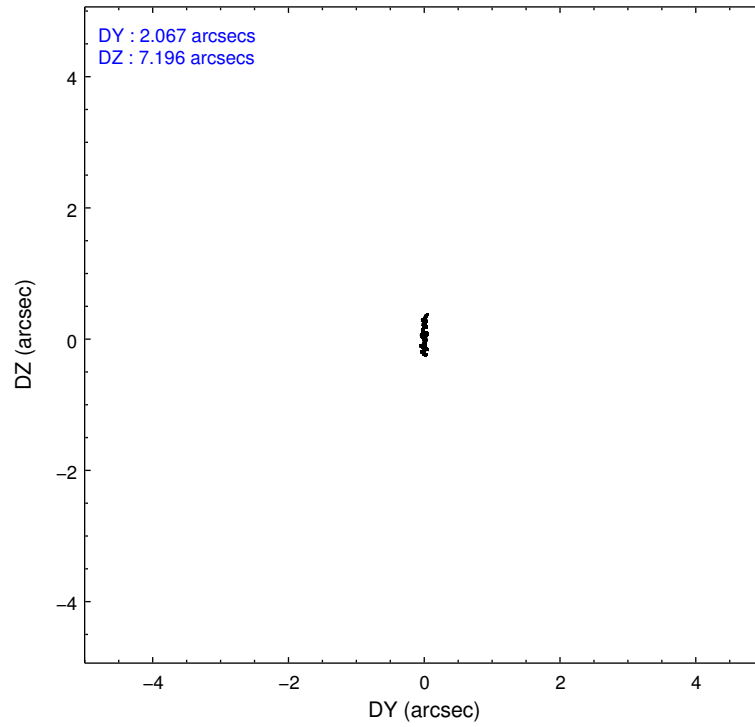
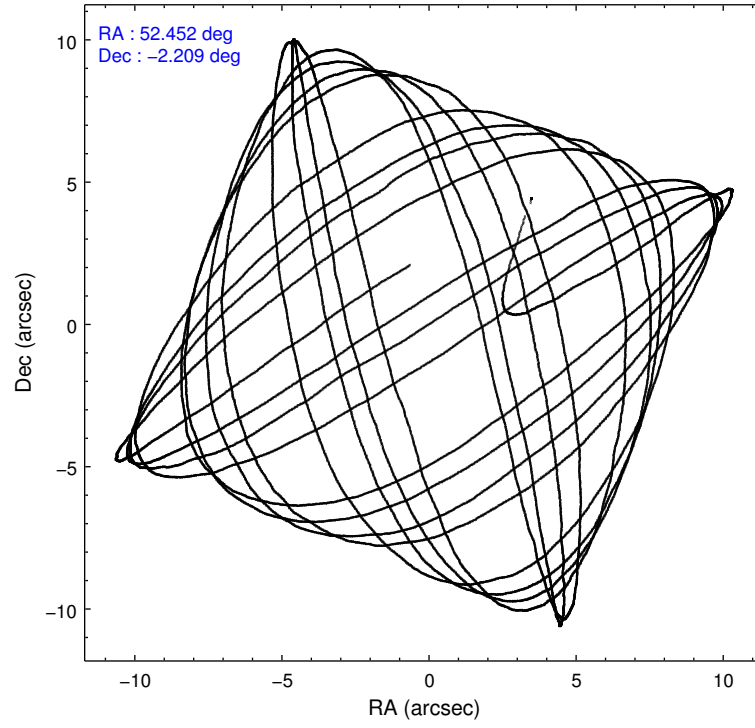
	ccd 0	ccd 1	ccd 2	ccd 3	ccd 6
level 1 events	76354	83439	102531	95013	99507
rejected events	66303	74106	90035	85035	88841
rejected %	86%	88%	87%	89%	89%

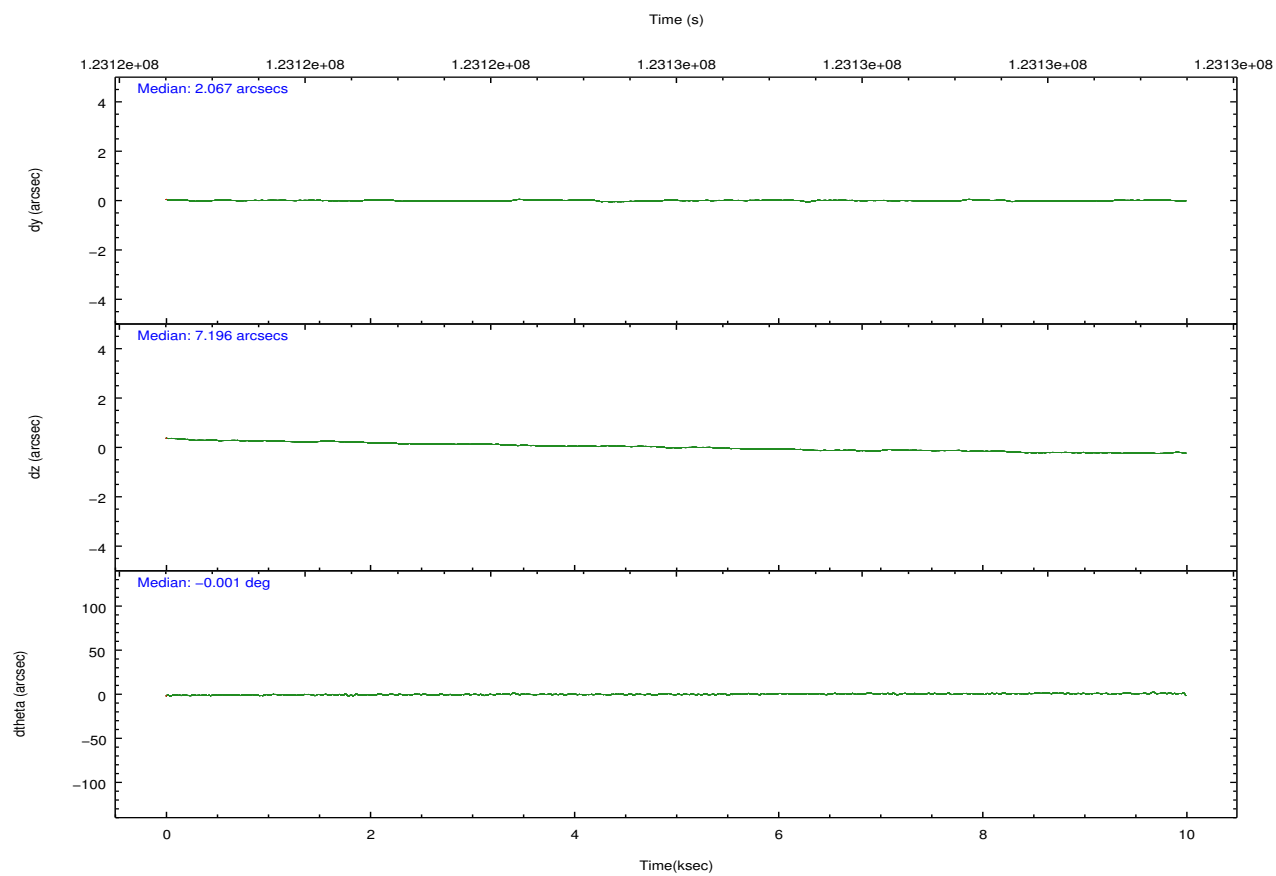
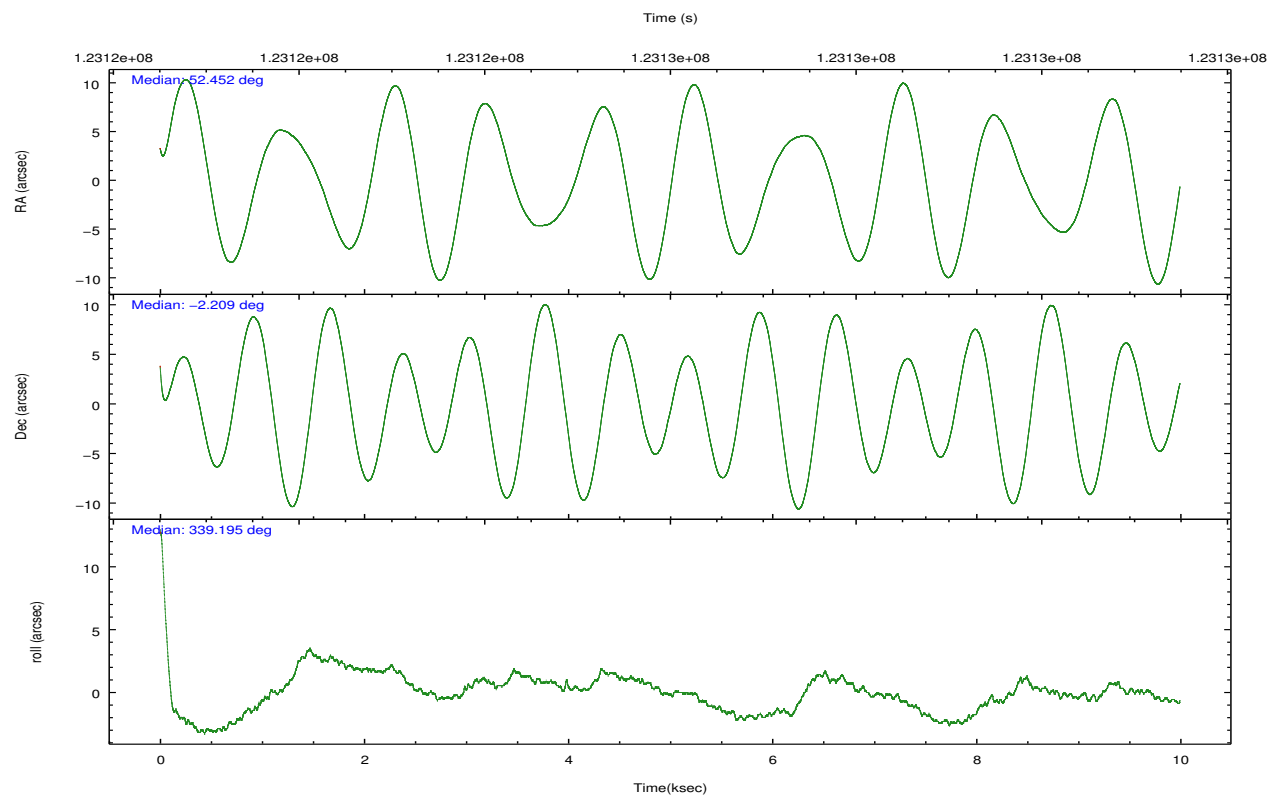
	ccd 0	ccd 1	ccd 2	ccd 3	ccd 6
grade 0 events	5138	4572	6820	5921	5974
	6%	5%	6%	6%	6%
grade 1 events	47	42	61	32	45
	0%	0%	0%	0%	0%
grade 2 events	3674	2749	4135	2162	3432
	4%	3%	4%	2%	3%
grade 3 events	749	905	736	816	752
	0%	1%	0%	0%	0%
grade 4 events	714	850	1202	800	749
	0%	1%	1%	0%	0%
grade 5 events	1814	2068	1876	2011	2228
	2%	2%	1%	2%	2%
grade 6 events	1383	1750	1578	1372	1468
	1%	2%	1%	1%	1%
grade 7 events	62835	70503	86123	81899	84859
	82%	84%	83%	86%	85%

2.2 Compared Parameters

Parameter	Planned	Actual	Parameter	Planned	Actual
Instrument	ACIS	ACIS	Obspar format version number	7	7
Detector	ACIS-01236	ACIS-01236	Obspar file type	PREDICTED	ACTUAL
Grating	NONE	NONE	Obspar update status	NONE	UPDATED
Data mode	VFAINT	VFAINT	Number of optional ACIS chips dropped	0	0
Observation mode	POINTING	POINTING	On-chip summing requested	N	N
[deg] Pointing RA	52.425375	52.45246401663594	Subarray requested	NONE	NONE
[deg] Pointing Dec	-2.213810	-2.209354915942607	Alternating exposures requested	N	N
[deg] Pointing Roll	338.994670	339.2044180603226	[s] Primary exposure time	0.000000	3.1
[mm] SIM focus pos	-0.782348	-0.7809083437167272			
[mm] SIM defocus	0	0.001439871863259334			
[mm] SIM translation stage pos	-227.742463	-227.734108438797			
[mm] SIM translation stage offset	-5.85	-5.858344564132665			
[s] Observation start time (MET)	123121146.184000	123119381.52471			
Observation start date	2001-11-26T00:18:02	2001-11-25T23:49:41			
[s] Observation end time (MET)	123130992.184000	123131305.86268			
Observation end date	2001-11-26T03:02:08	2001-11-26T03:08:25			
Read mode	TIMED	TIMED			

2.3 Aspect



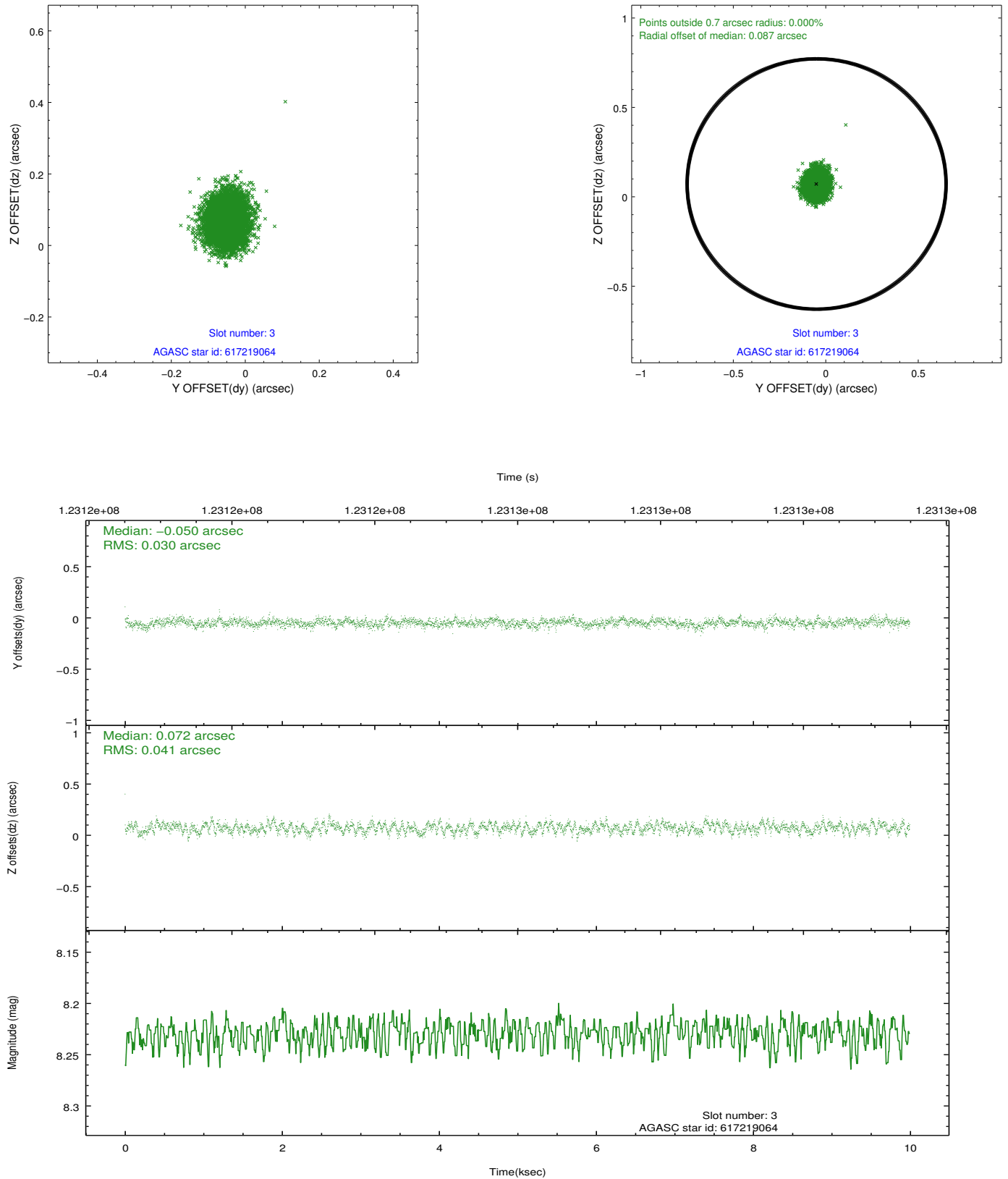


Slot Statistics

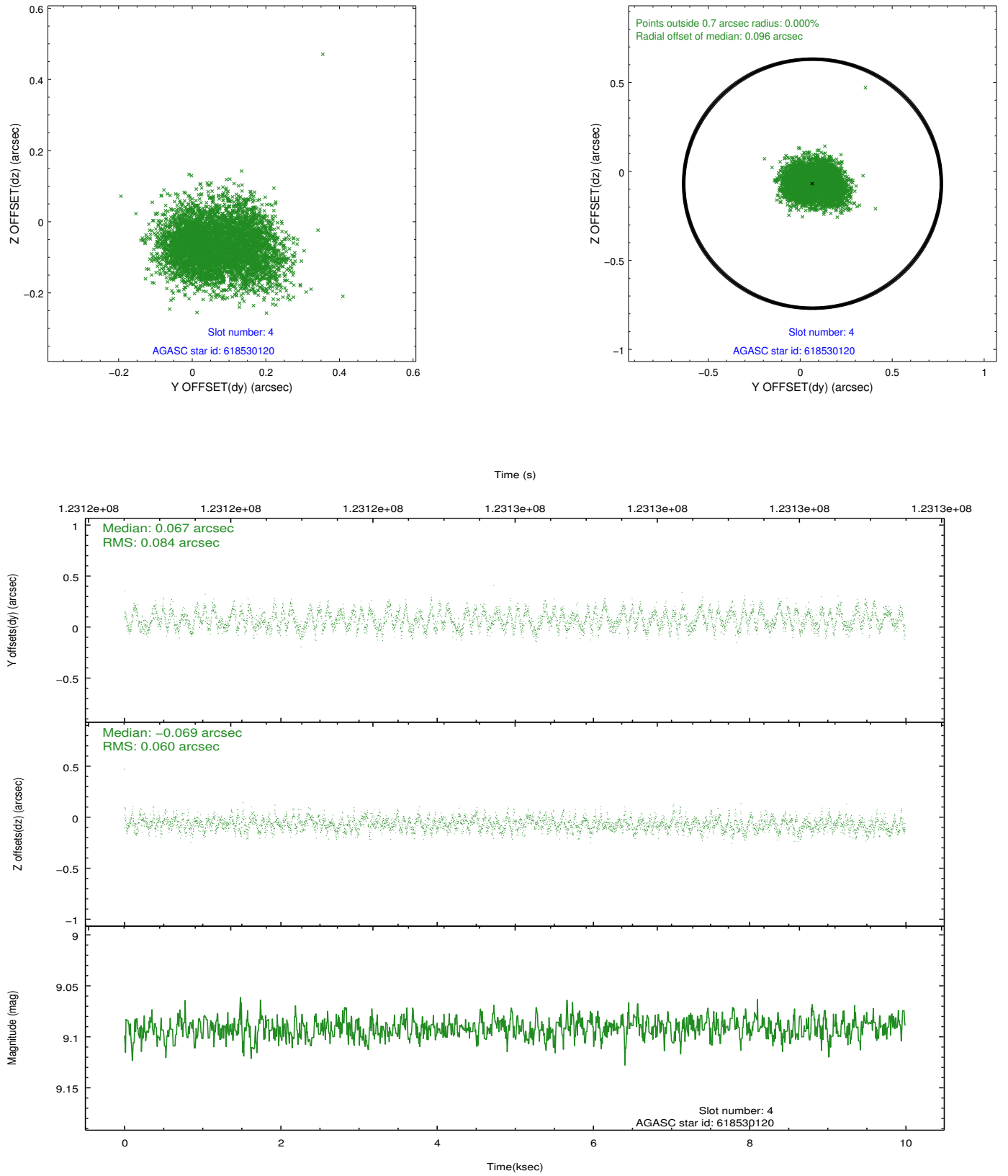
slot	status	id	mag	n_pts	med_dy	med_dz	dr1	dr2	ra	dec	mean_y	mean_z
0	FID	ACIS-I-1	7.24	2437	0.036	0.015	0.009	0.016	0.000000	0.000000	937.67	-950.84
1	FID	ACIS-I-5	7.23	2437	-0.107	0.077	0.009	0.015	0.000000	0.000000	-1810.26	946.43
2	FID	ACIS-I-6	7.25	2438	-0.021	-0.021	0.009	0.015	0.000000	0.000000	402.61	1591.41
3	GUIDE	617219064	8.23	4874	-0.050	0.072	0.054	0.087	52.036541	-2.479663	-961.06	-1395.39
4	GUIDE	618530120	9.09	4872	0.067	-0.069	0.112	0.172	52.859006	-2.898707	2340.73	-1743.54
5	GUIDE	618529600	9.55	4872	0.011	0.009	0.113	0.182	52.561469	-2.979434	1446.85	-2398.28
6	GUIDE	617225208	8.93	4875	0.017	-0.070	0.072	0.115	52.402007	-1.748912	-677.16	1531.19
7	GUIDE	618135616	9.41	4871	-0.049	0.058	0.094	0.151	52.691139	-1.780604	334.35	1798.56

2.4 Star Slots

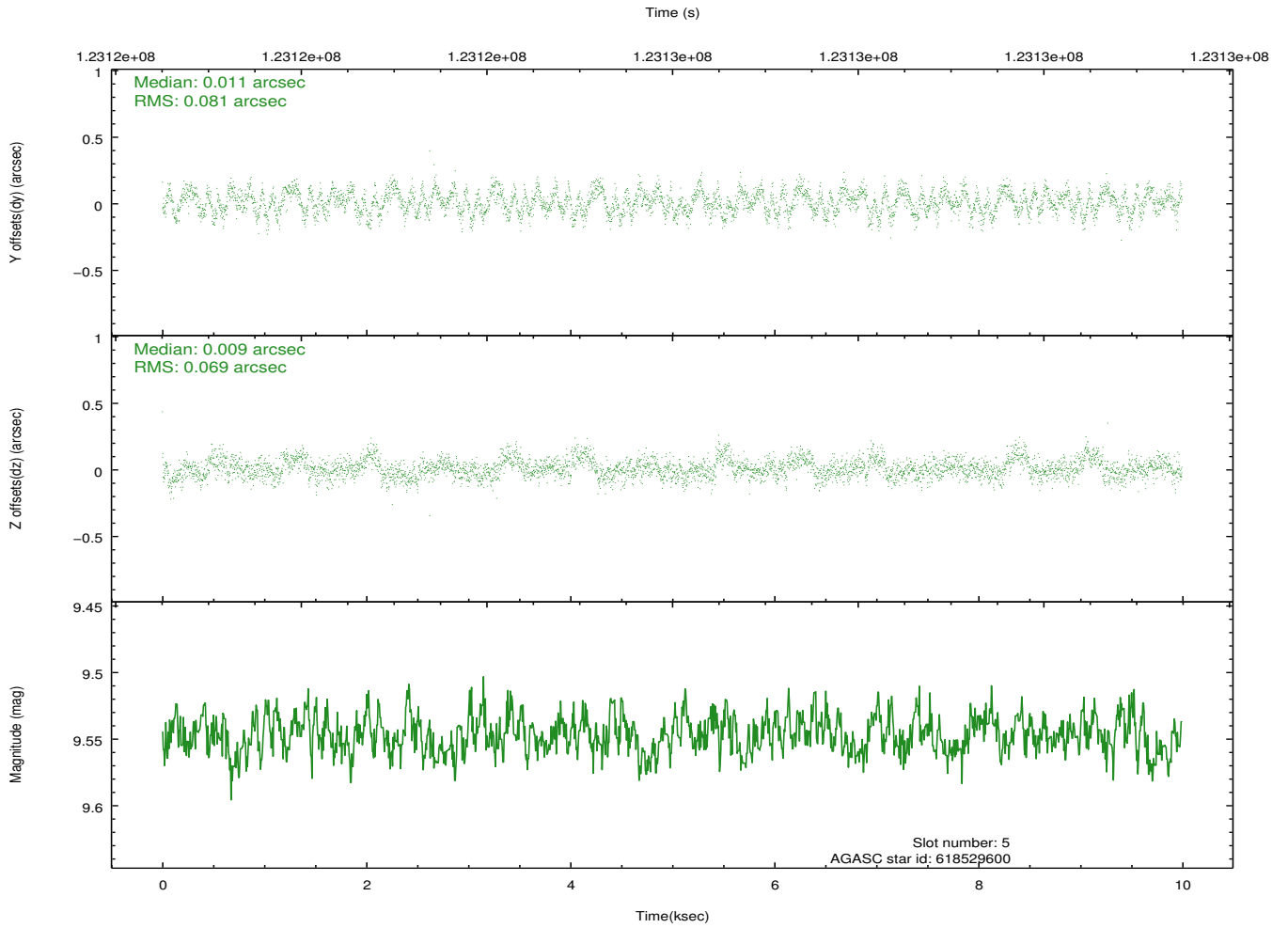
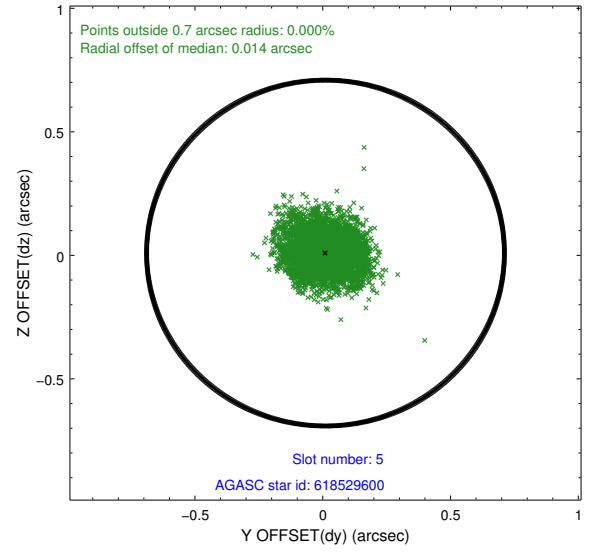
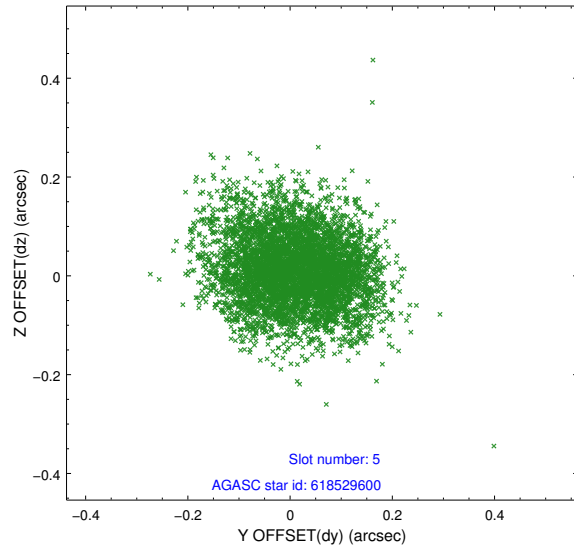
2.4.1 Slot 3



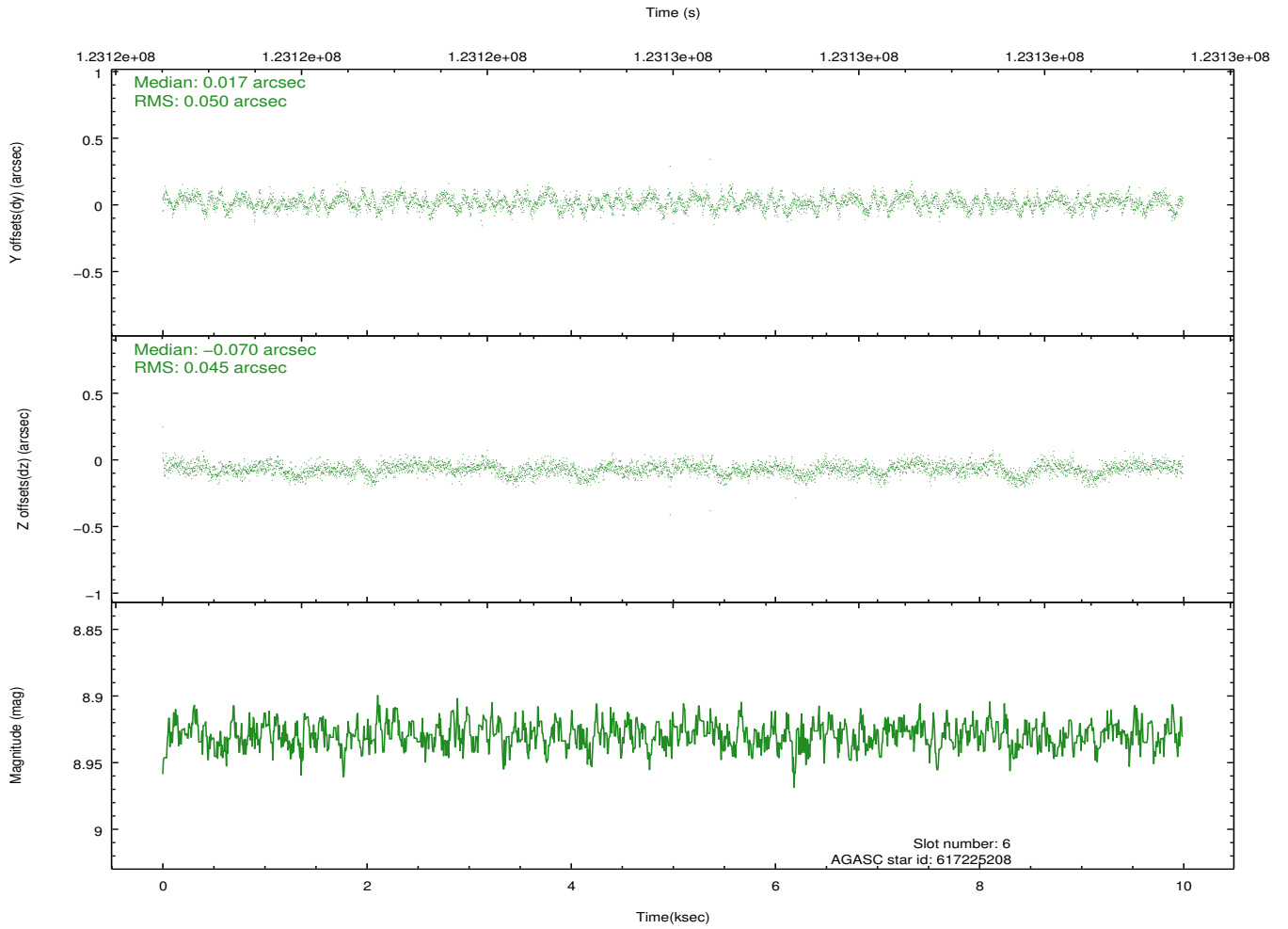
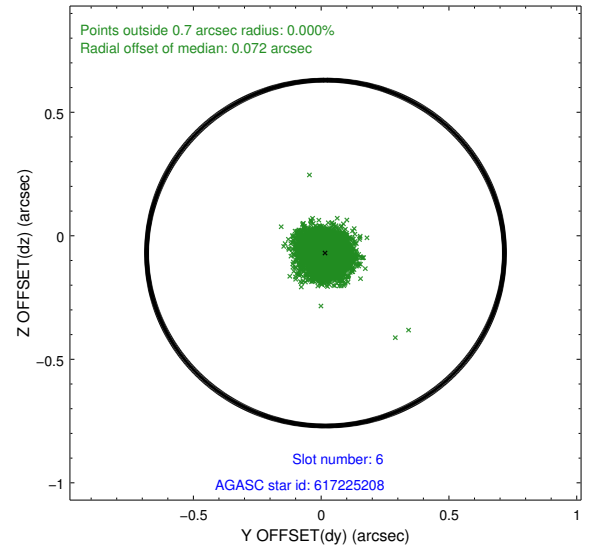
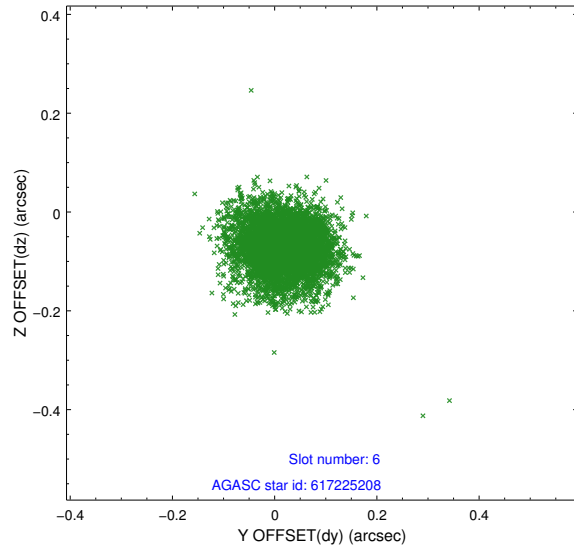
2.4.2 Slot 4



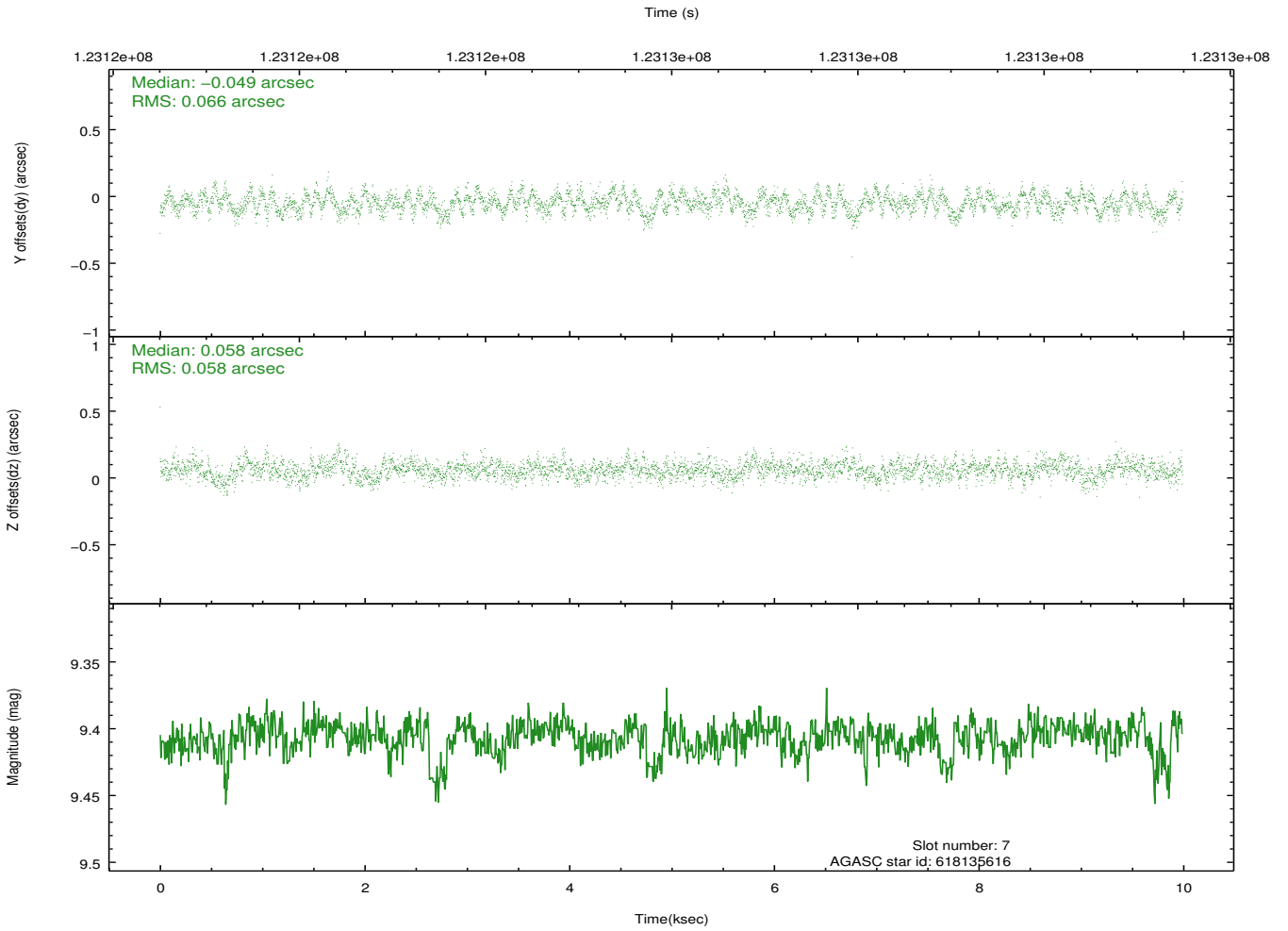
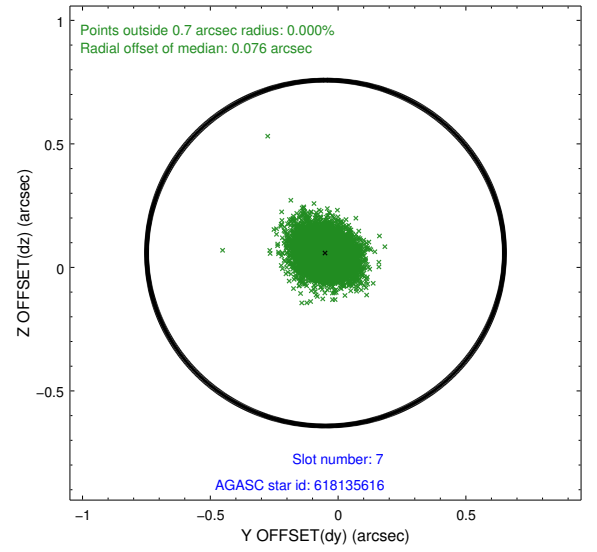
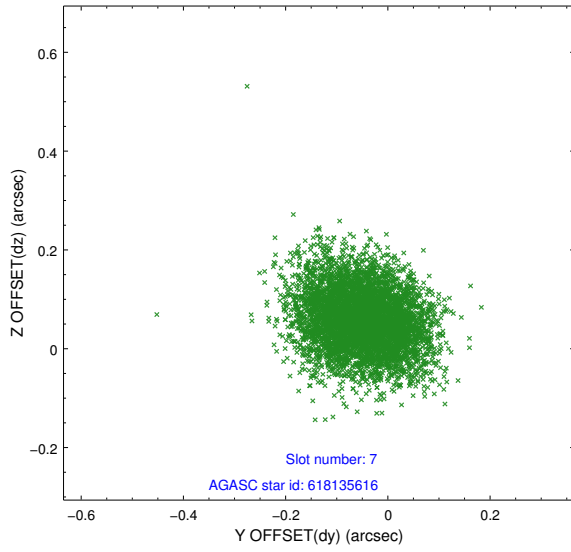
2.4.3 Slot 5



2.4.4 Slot 6

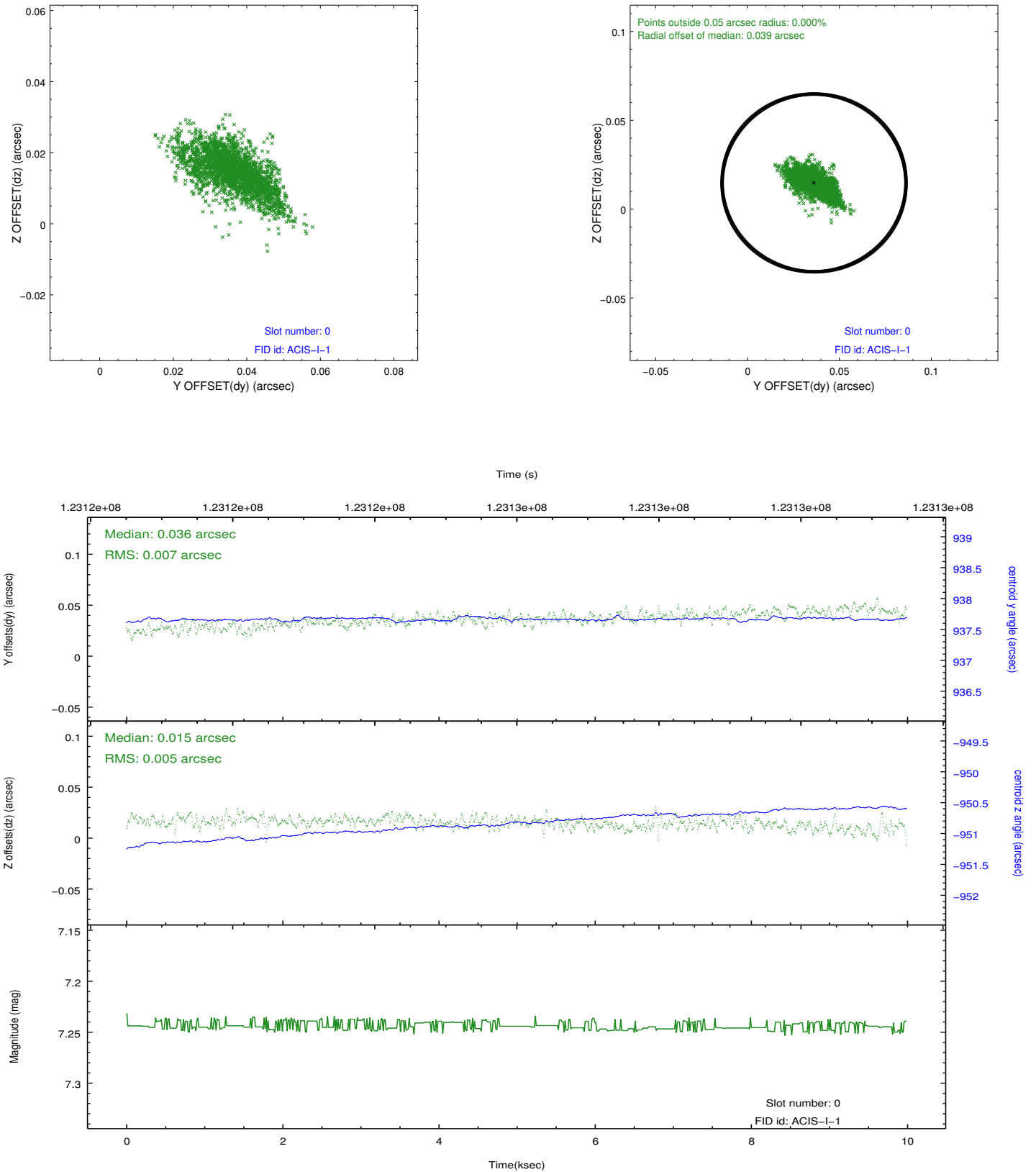


2.4.5 Slot 7

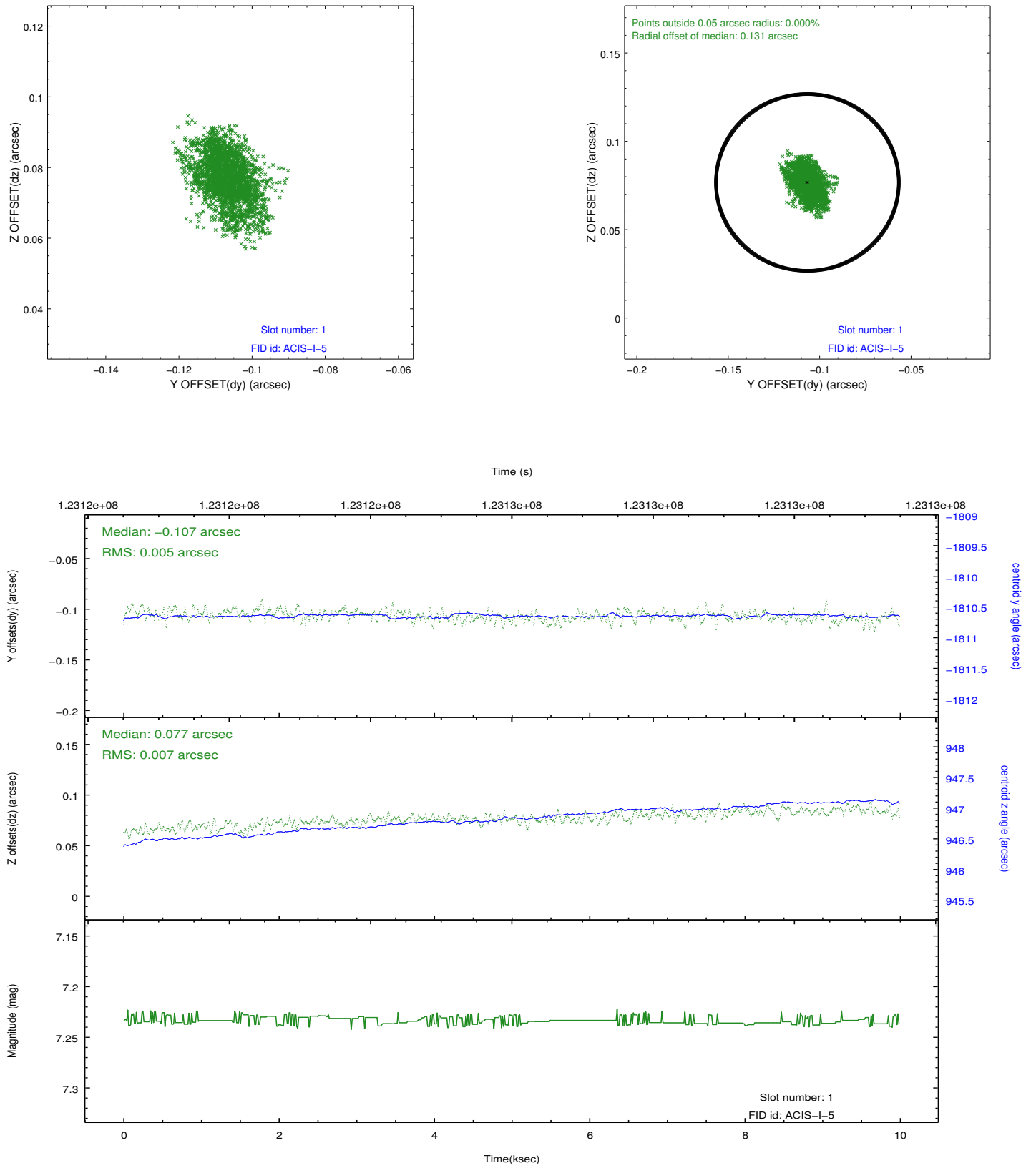


2.5 FID Slots

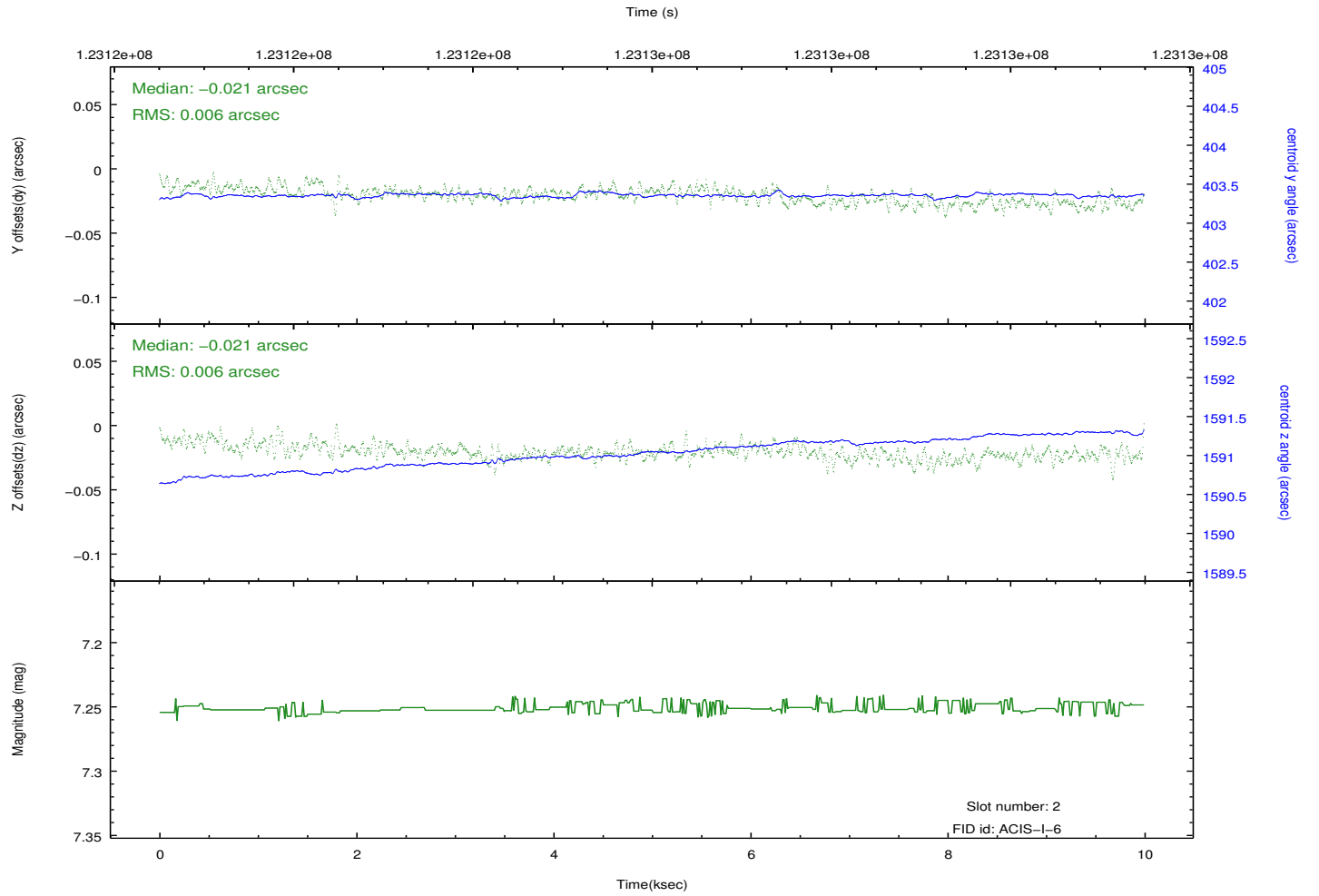
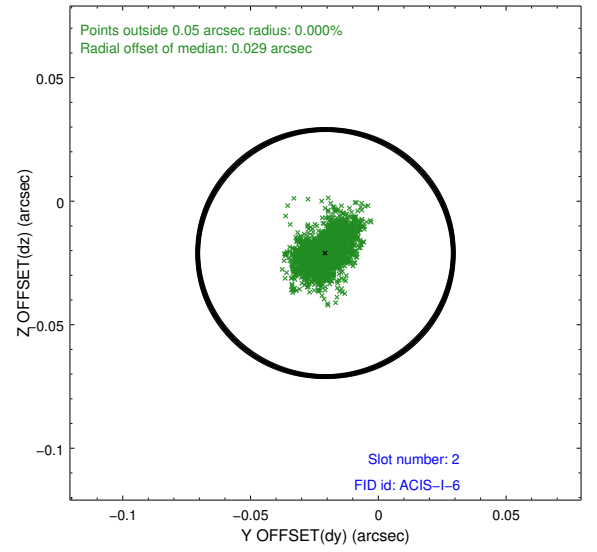
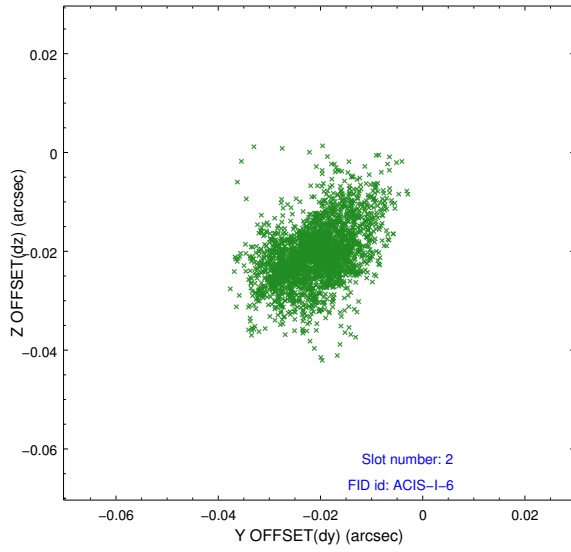
2.5.1 Slot 0



2.5.2 Slot 1



2.5.3 Slot 2



A Summary

A.1 Status

V&V Scientist	Jen Lauer
V&V Date (YYYY-MM-DD)	2012.09.28
V&V Edition	1
V&V Disposition and Status	OK
V&V Charge Time	9.991

A.2 Comments