

# V&V Reference Report

## L2 ASCDS Version : 7.6.9

Observation 3256 - L2 Version 001  
Chandra X-Ray Center

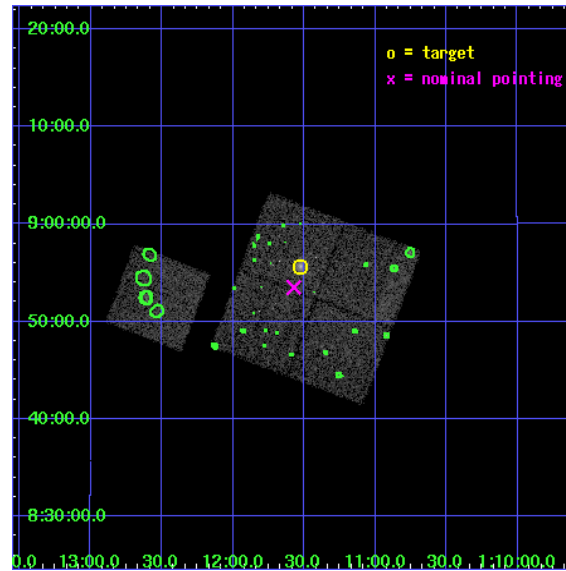
L2 Processing Date : Oct 9 2006

## Contents

<b>1</b>	<b>Front</b>	<b>2</b>
<b>2</b>	<b>OBI</b>	<b>3</b>
2.1	OBI . . . . .	3
2.1.1	Images . . . . .	3
2.1.2	Bias . . . . .	3
2.1.3	Parameters . . . . .	4
2.1.4	Events . . . . .	4
2.2	Compared Parameters . . . . .	5
2.3	Aspect . . . . .	6
2.4	Star Slots . . . . .	9
2.4.1	Slot 3 . . . . .	9
2.4.2	Slot 4 . . . . .	10
2.4.3	Slot 5 . . . . .	11
2.4.4	Slot 6 . . . . .	12
2.4.5	Slot 7 . . . . .	13
2.5	FID Slots . . . . .	14
2.5.1	Slot 0 . . . . .	14
2.5.2	Slot 1 . . . . .	15
2.5.3	Slot 2 . . . . .	16
<b>3</b>	<b>Point Sources</b>	<b>17</b>
<b>A</b>	<b>Summary</b>	<b>18</b>
A.1	Status . . . . .	18
A.2	Comments . . . . .	18

# 1 Front

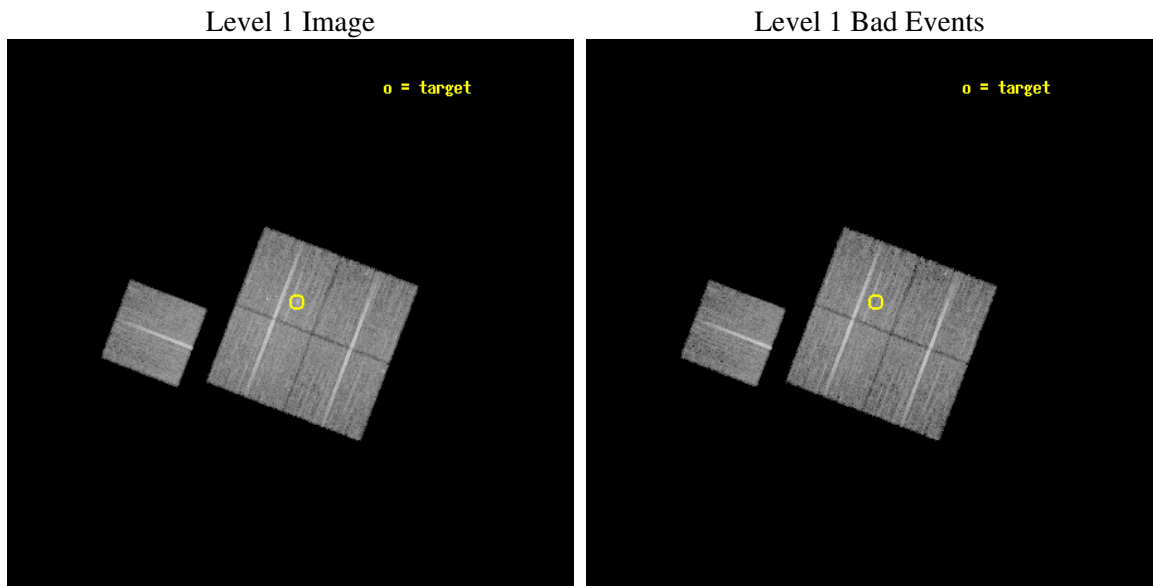
seq_num	800256
obs_id	3256
title	OBSERVATION OF MACS CLUSTERS, 0.45
observer	DR. LEON VANSPEYBROECK
object	MACS-J0111.5+0855
dtcycle	0
cycle	P
ra_targ	17.88125
dec_targ	8.927778
ra_nom	17.893004991506
dec_nom	8.8919584016062
roll_nom	290.92278240754
revision	2
ontime	19644.699962229
livetime	19388.027495004
ontime0	19641.558952183
ontime1	19644.699962229
ontime2	19641.558952183
ontime3	19644.699962229
ontime6	19638.418001771
l2events	42243



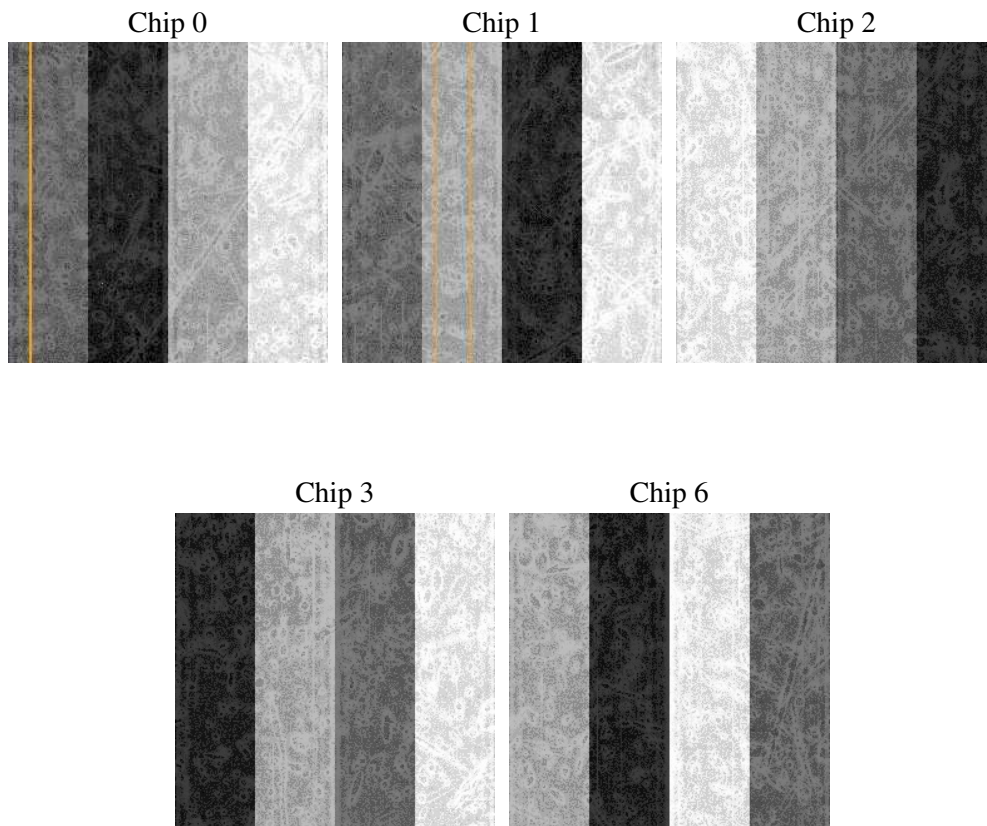
## 2 OBI

### 2.1 OBI

#### 2.1.1 Images



#### 2.1.2 Bias



### 2.1.3 Parameters

obi_num	0
ascdsver	7.6.9
caldbver	3.2.3
date	2006-10-09T18:44:18
revision	2

sched_exp_time	19900.000000
ontime	19647.004227698
ontime0	19643.86323753
ontime1	19647.004247576
ontime2	19643.863217652
ontime3	19647.004227698
ontime6	19640.722287118
l1events	472833

### 2.1.4 Events

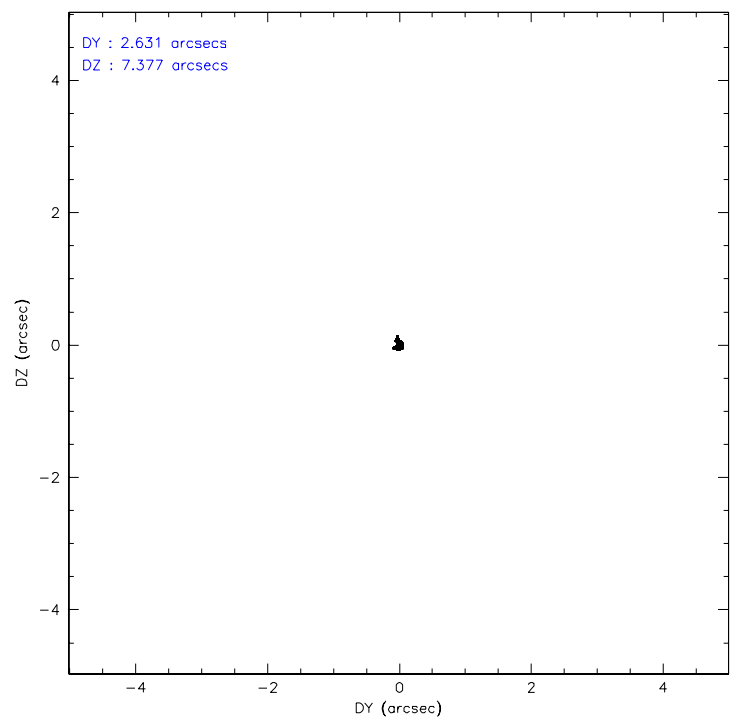
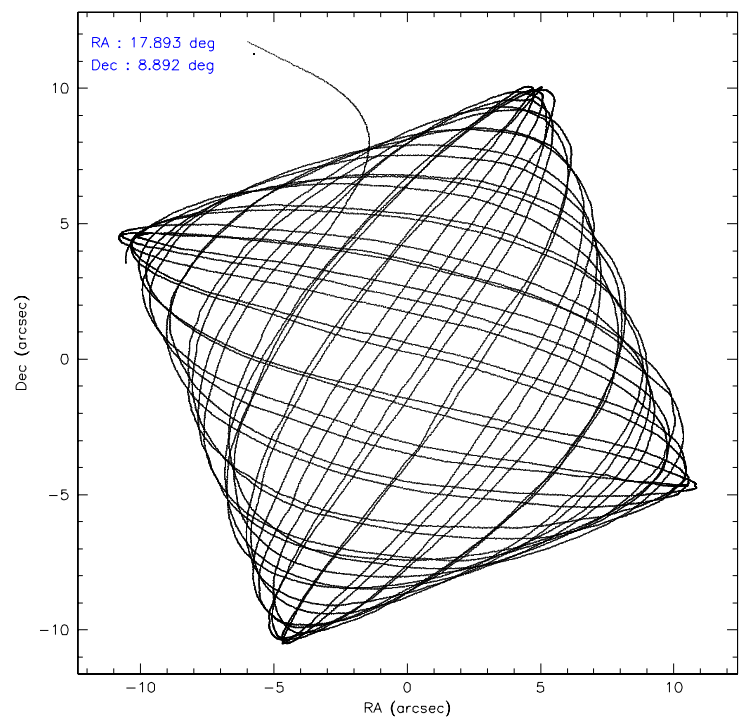
	ccd 0	ccd 1	ccd 2	ccd 3	ccd 6
level 1 events	88409	90408	100694	99637	93685
rejected events	78737	80072	91008	88638	83906
rejected %	89%	88%	90%	88%	89%

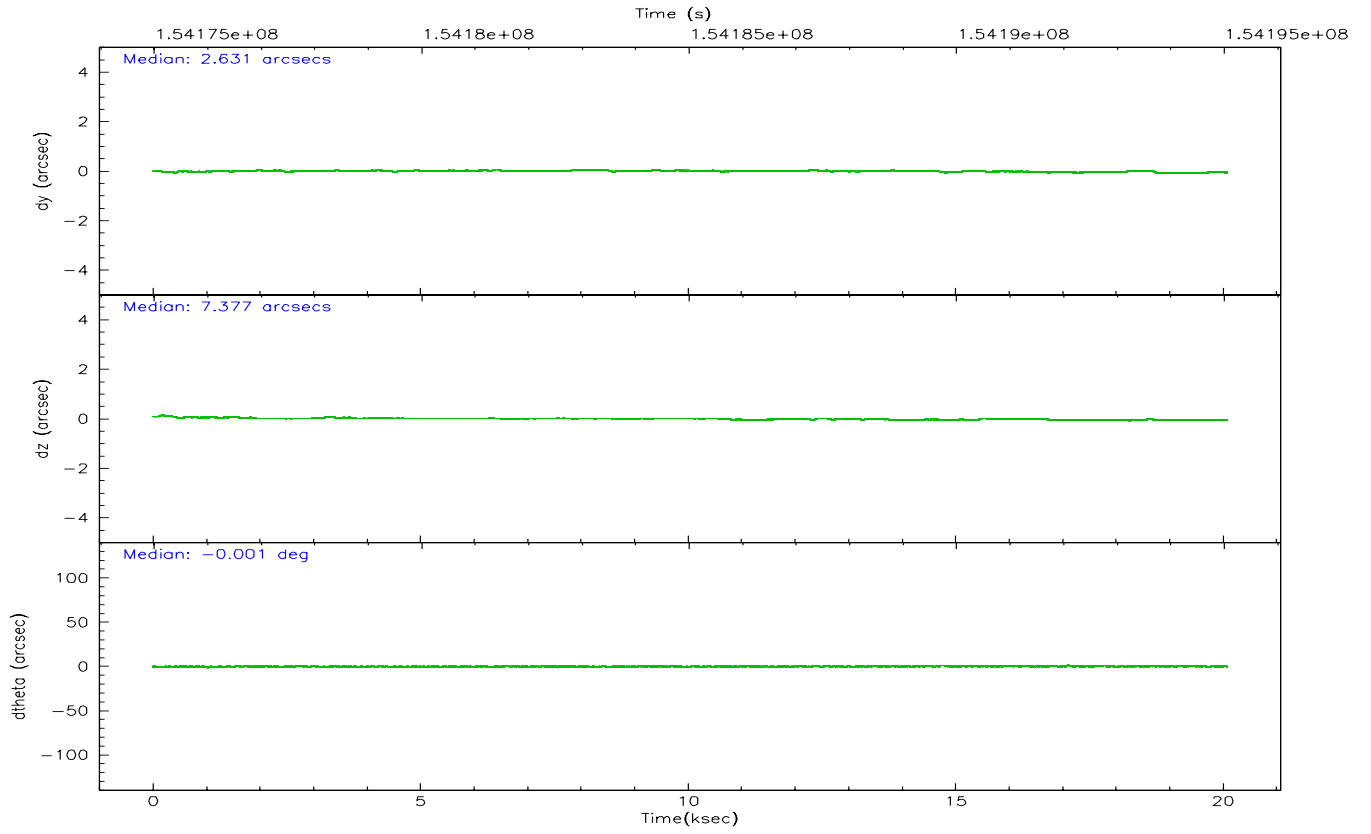
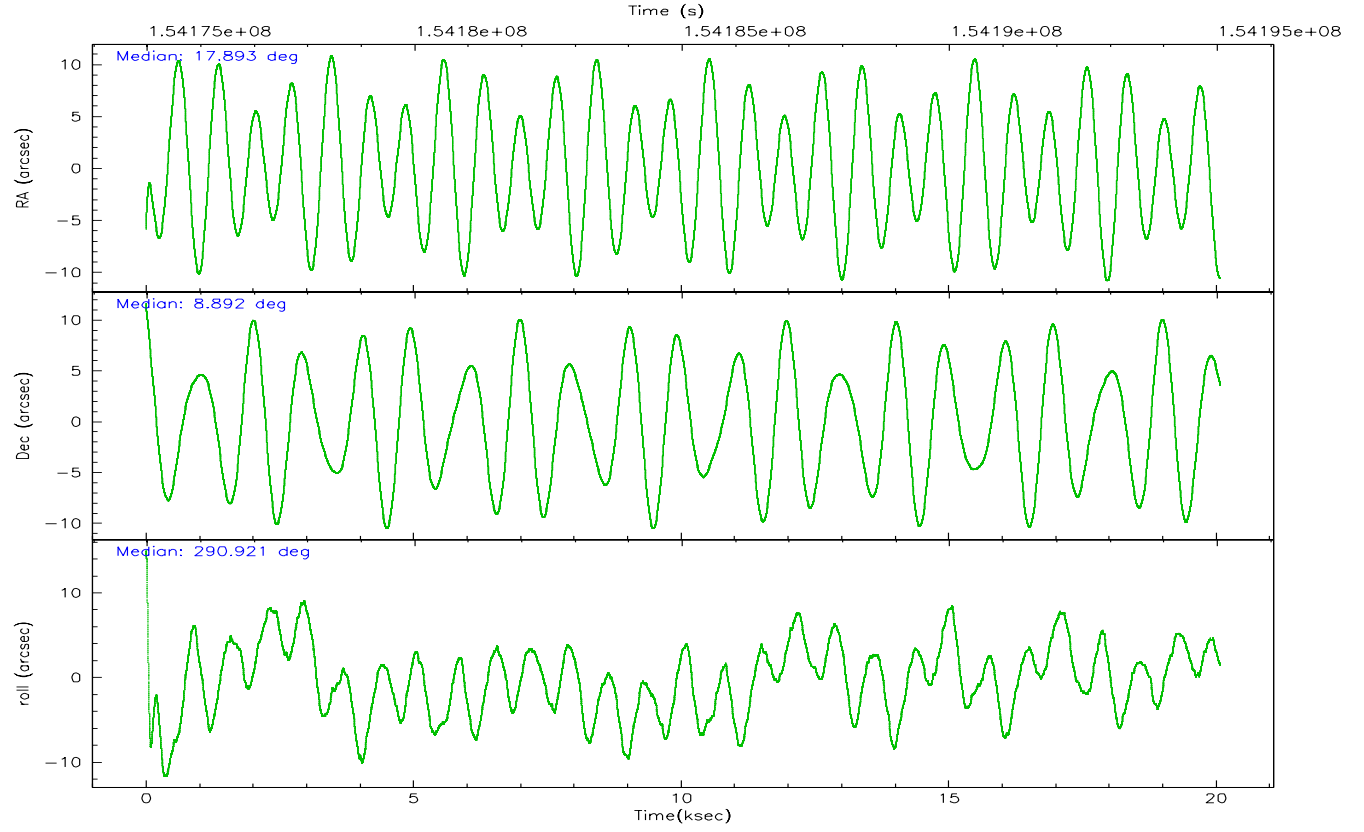
	ccd 0	ccd 1	ccd 2	ccd 3	ccd 6
grade 0 events	3431	3855	3599	4937	3460
	3%	4%	3%	4%	3%
grade 1 events	46	43	52	55	36
	0%	0%	0%	0%	0%
grade 2 events	2215	2126	2171	2038	1949
	2%	2%	2%	2%	2%
grade 3 events	1172	1224	1097	1141	1210
	1%	1%	1%	1%	1%
grade 4 events	1023	1170	1046	1112	1071
	1%	1%	1%	1%	1%
grade 5 events	3172	3476	3053	3668	3641
	3%	3%	3%	3%	3%
grade 6 events	1831	1961	1773	1773	2090
	2%	2%	1%	1%	2%
grade 7 events	75519	76553	87903	84913	80228
	85%	84%	87%	85%	85%

## 2.2 Compared Parameters

Parameter	Planned	Actual	Parameter	Planned	Actual
Instrument	ACIS	ACIS	Obspar format version number	6	6
Detector	ACIS-01236	ACIS-01236	Obspar file type	PREDICTED	ACTUAL
Grating	NONE	NONE	Obspar update status	NONE	UPDATED
Data mode	VFAINT	VFAINT	Number of optional ACIS chips dropped	0	0
Observation mode	POINTING	POINTING	On-chip summing requested	N	N
Pointing RA	17.871423	17.89300499150566	Subarray requested	NONE	NONE
Pointing Dec	8.909141	8.891958401606244	Alternating exposures requested	N	N
Pointing Roll	290.717418	290.9227824075361	Primary exposure time	0.000000	3.1
SIM focus pos (mm)	-0.782348	-0.7809083437167272			
SIM defocus (mm)	0	0.001439871863259334			
SIM translation stage pos (mm)	-227.742463	-227.734108438797			
SIM translation stage offset (mm)	-5.85	-5.858344564132665			
Observation start time	154175154.184000	154174367.95494			
Observation start date	2002-11-20T10:24:50	2002-11-20T10:12:47			
Observation end time	154195054.184000	154195427.60581			
Observation end date	2002-11-20T15:56:30	2002-11-20T16:03:47			
Read mode	TIMED	TIMED			

## 2.3 Aspect





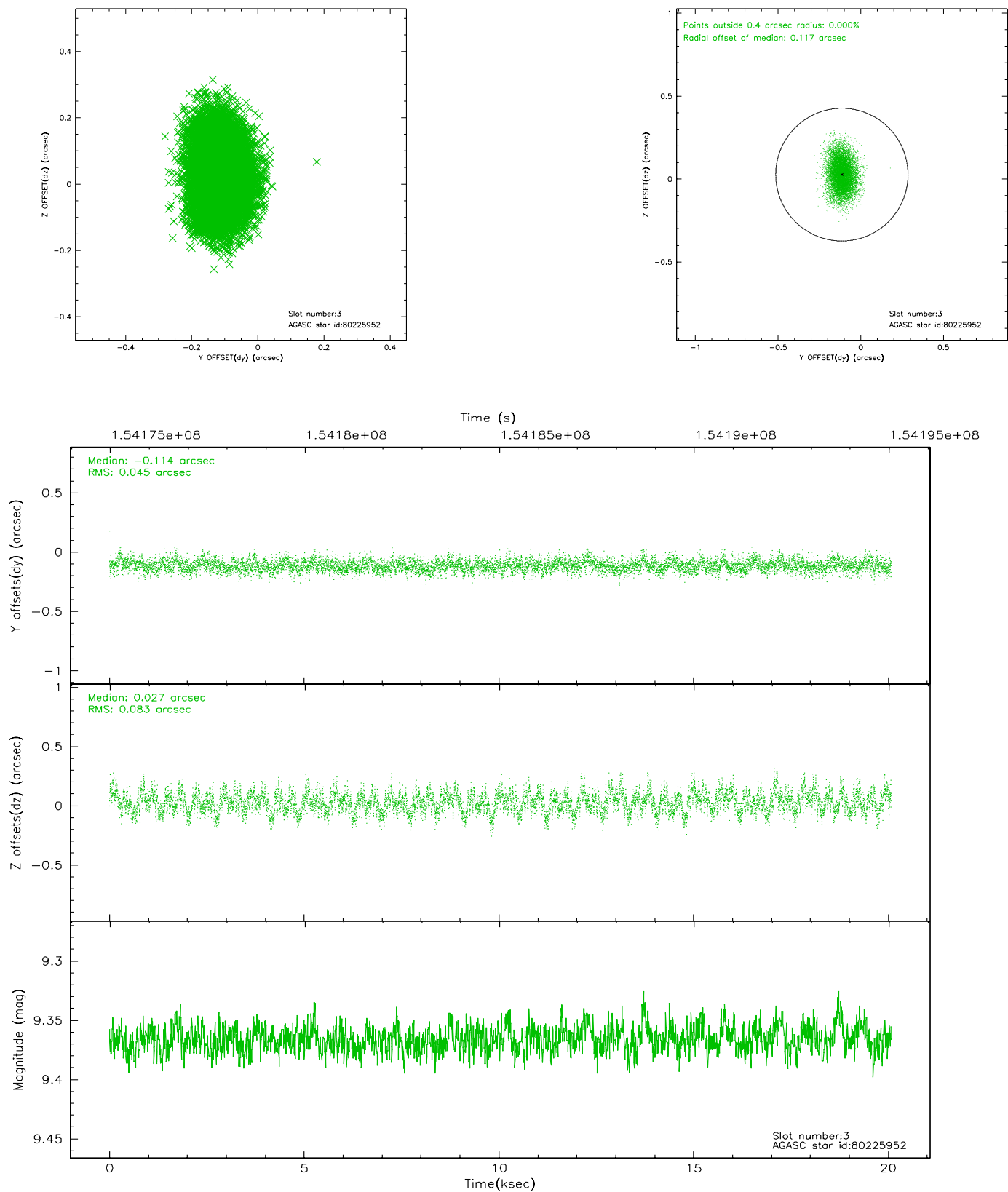
### Slot Statistics

slot	status	id	mag	n_pts	med_dy	med_dz	dr1	dr2	ra	dec	mean_y	mean_z
0	FID	ACIS-I-1	7.24	4898	0.019	0.039	0.006	0.010	0.000000	0.000000	937.07	-950.99
1	FID	ACIS-I-5	7.24	4898	-0.097	0.065	0.007	0.011	0.000000	0.000000	-1811.03	946.44
2	FID	ACIS-I-6	7.25	4898	-0.013	-0.033	0.008	0.013	0.000000	0.000000	402.41	1591.03
3	GUIDE	80225952	9.37	9792	-0.114	0.027	0.100	0.169	17.334916	9.019697	-1047.11	-1642.70
4	GUIDE	80352256	9.74	9783	0.191	-0.021	0.098	0.161	18.050877	8.946658	100.71	644.79
5	GUIDE	80354600	9.61	9768	0.023	0.132	0.099	0.166	18.031643	8.309021	2223.93	-229.94
6	GUIDE	80354640	7.46	9797	-0.133	-0.000	0.060	0.101	18.424340	8.974614	475.10	1923.12
7	GUIDE	80357000	9.45	9793	0.033	-0.132	0.090	0.146	18.090538	8.536646	1531.40	256.10

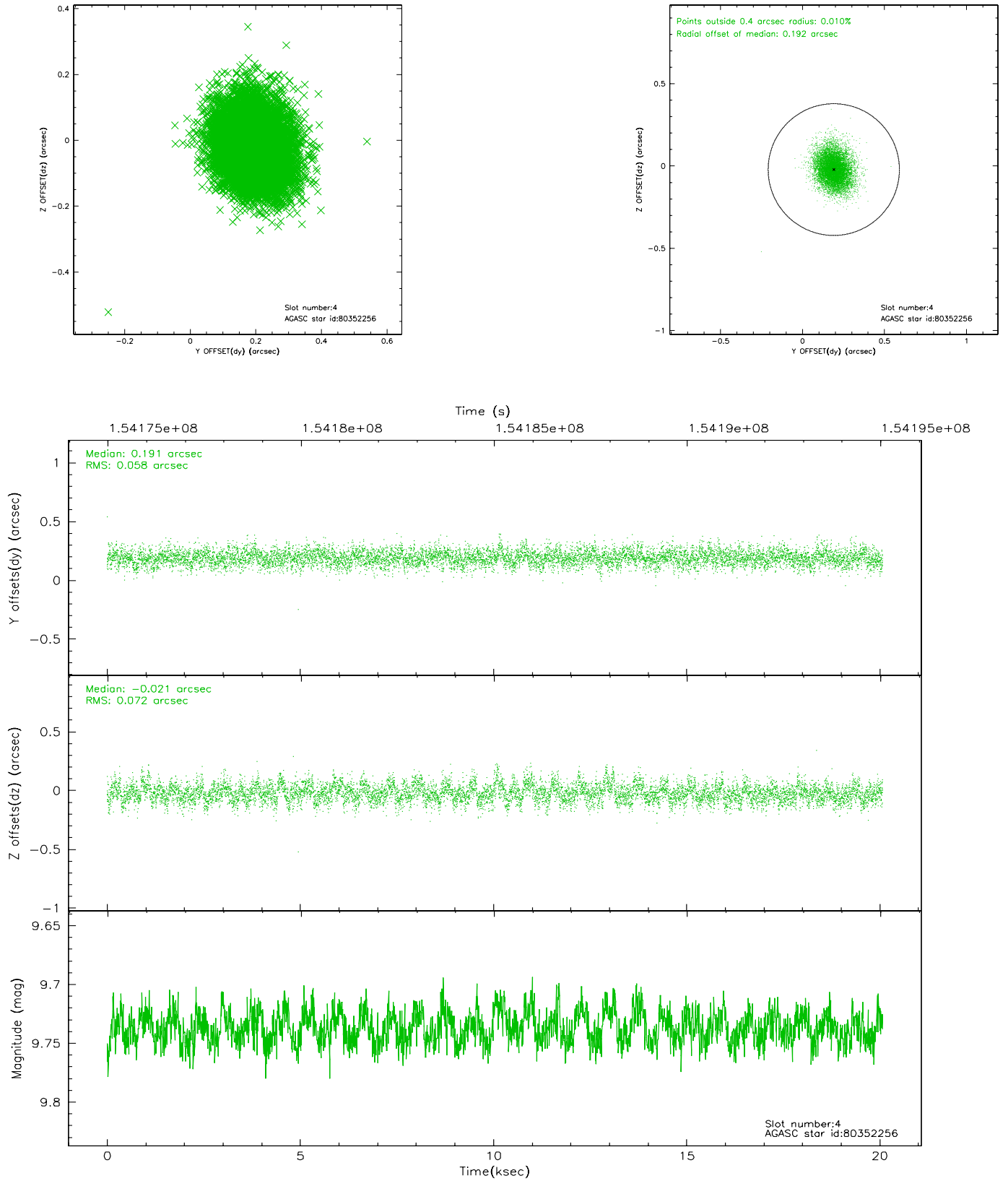


## 2.4 Star Slots

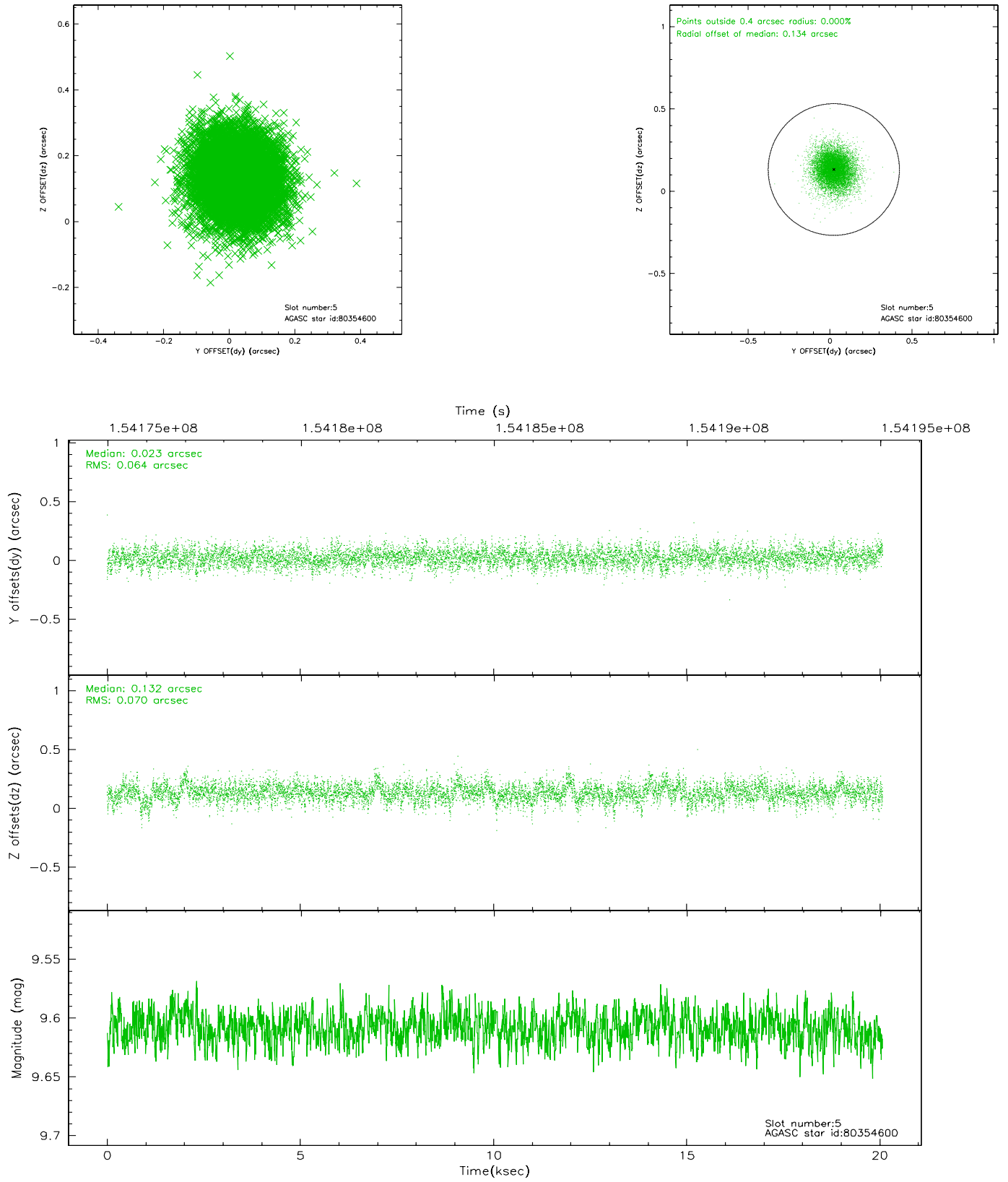
### 2.4.1 Slot 3



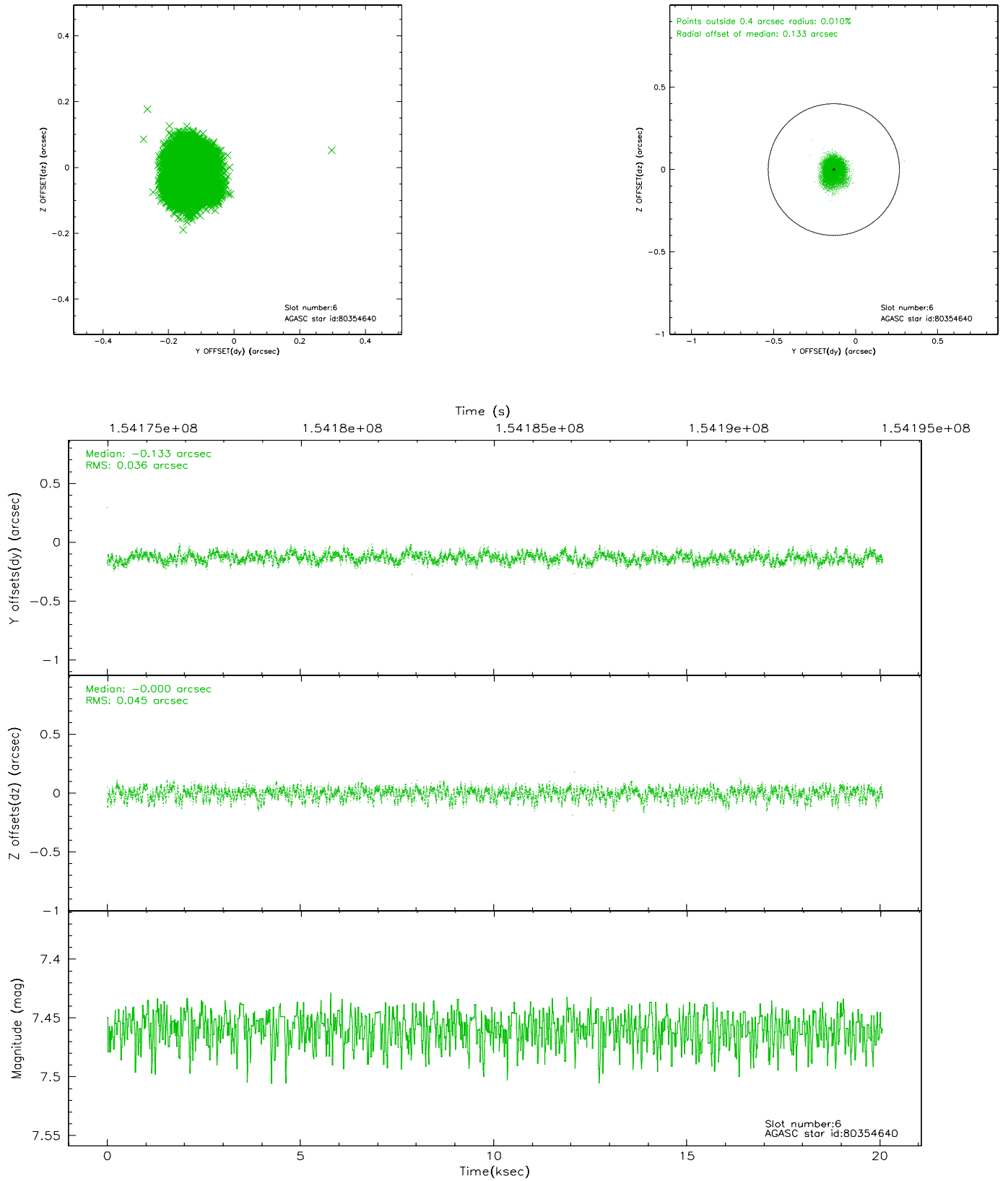
## 2.4.2 Slot 4



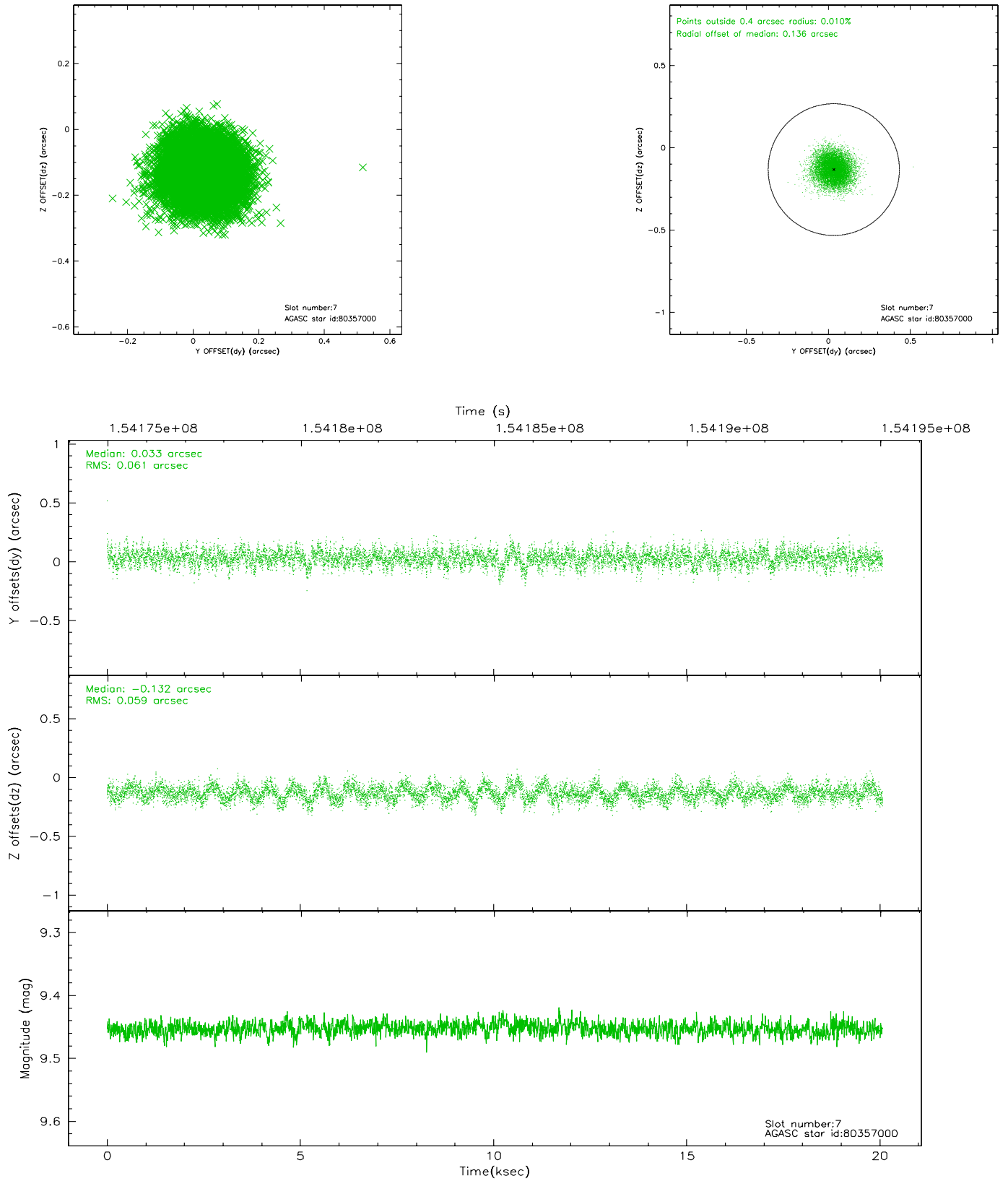
### 2.4.3 Slot 5



## 2.4.4 Slot 6

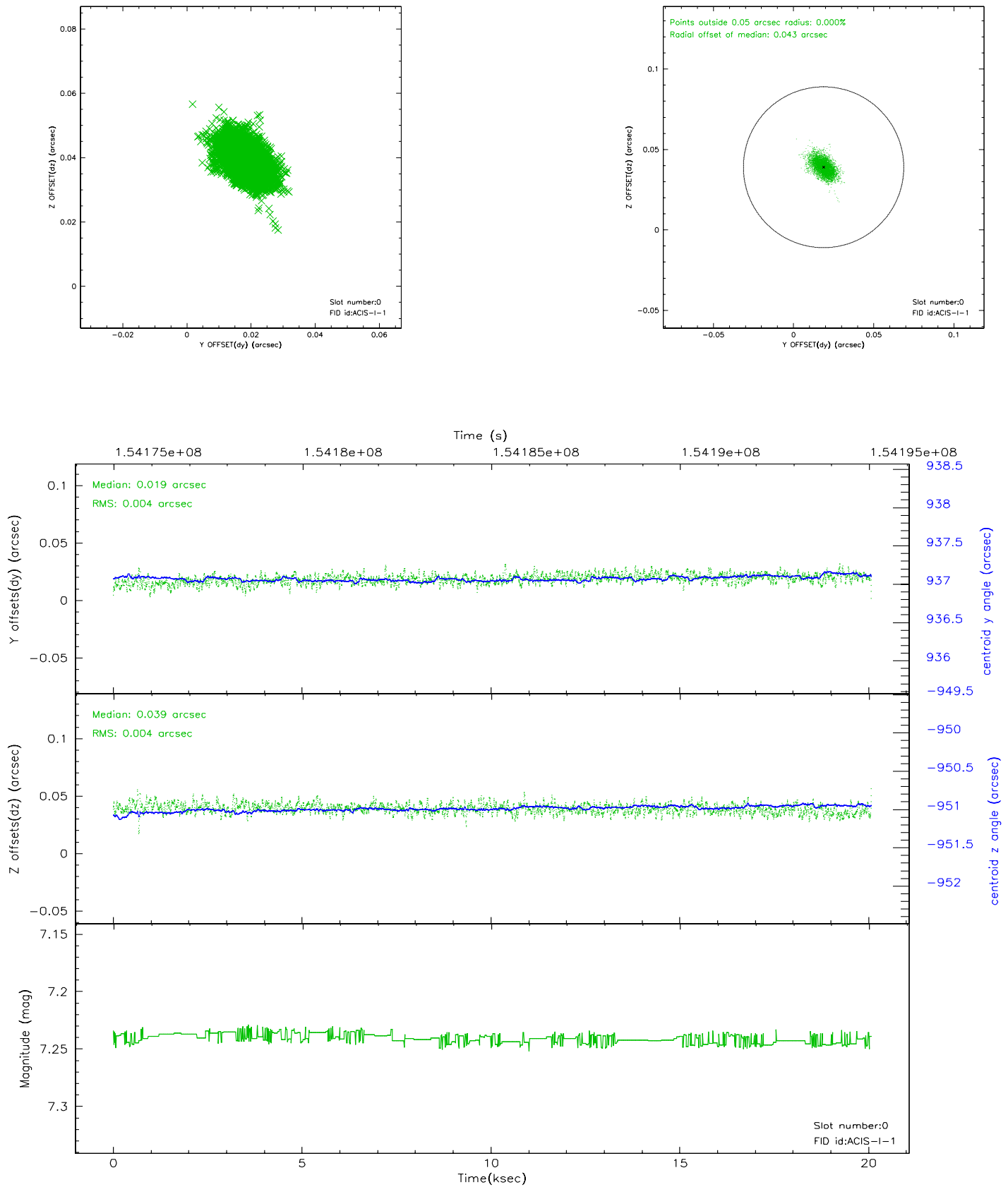


## 2.4.5 Slot 7

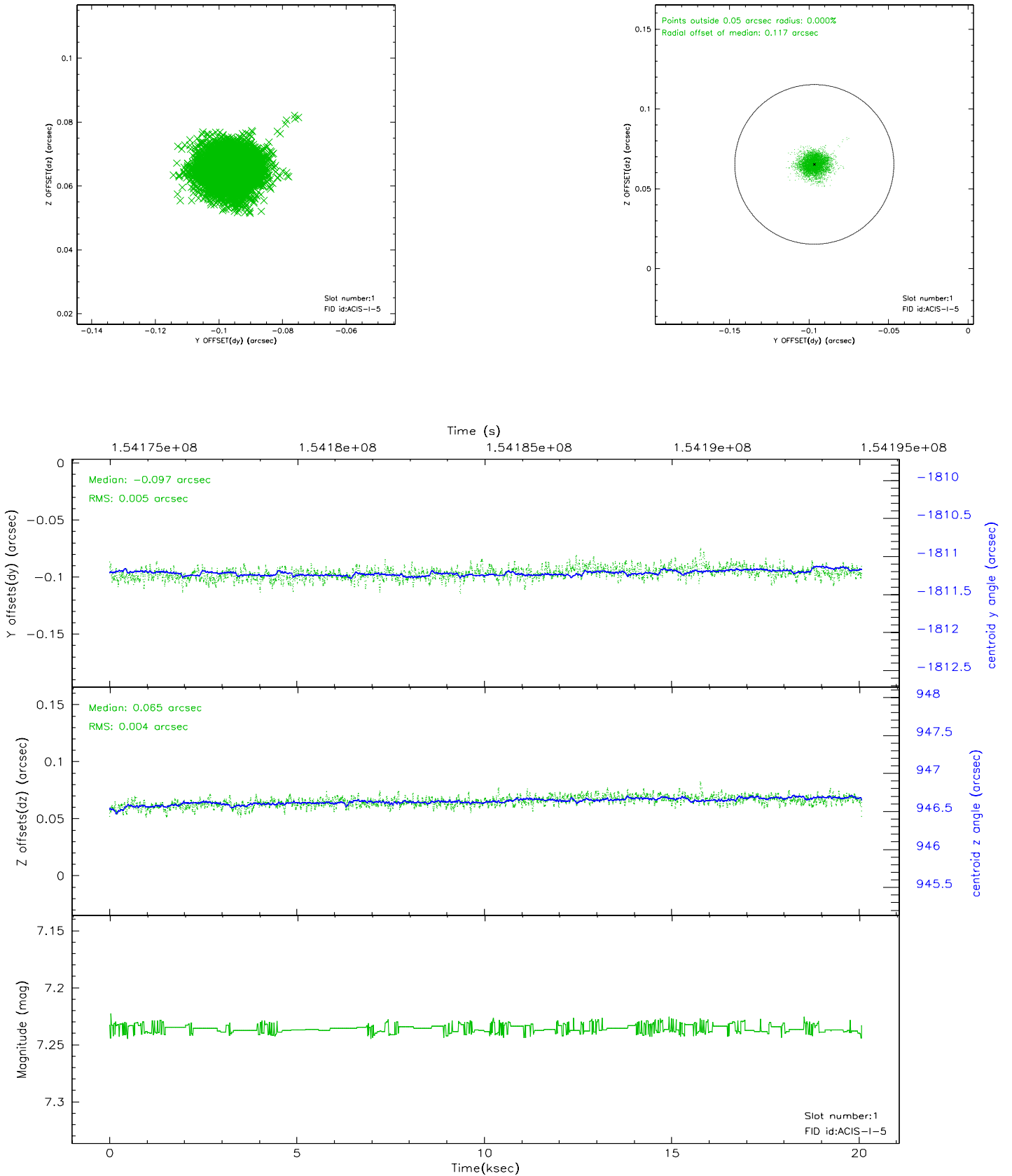


## 2.5 FID Slots

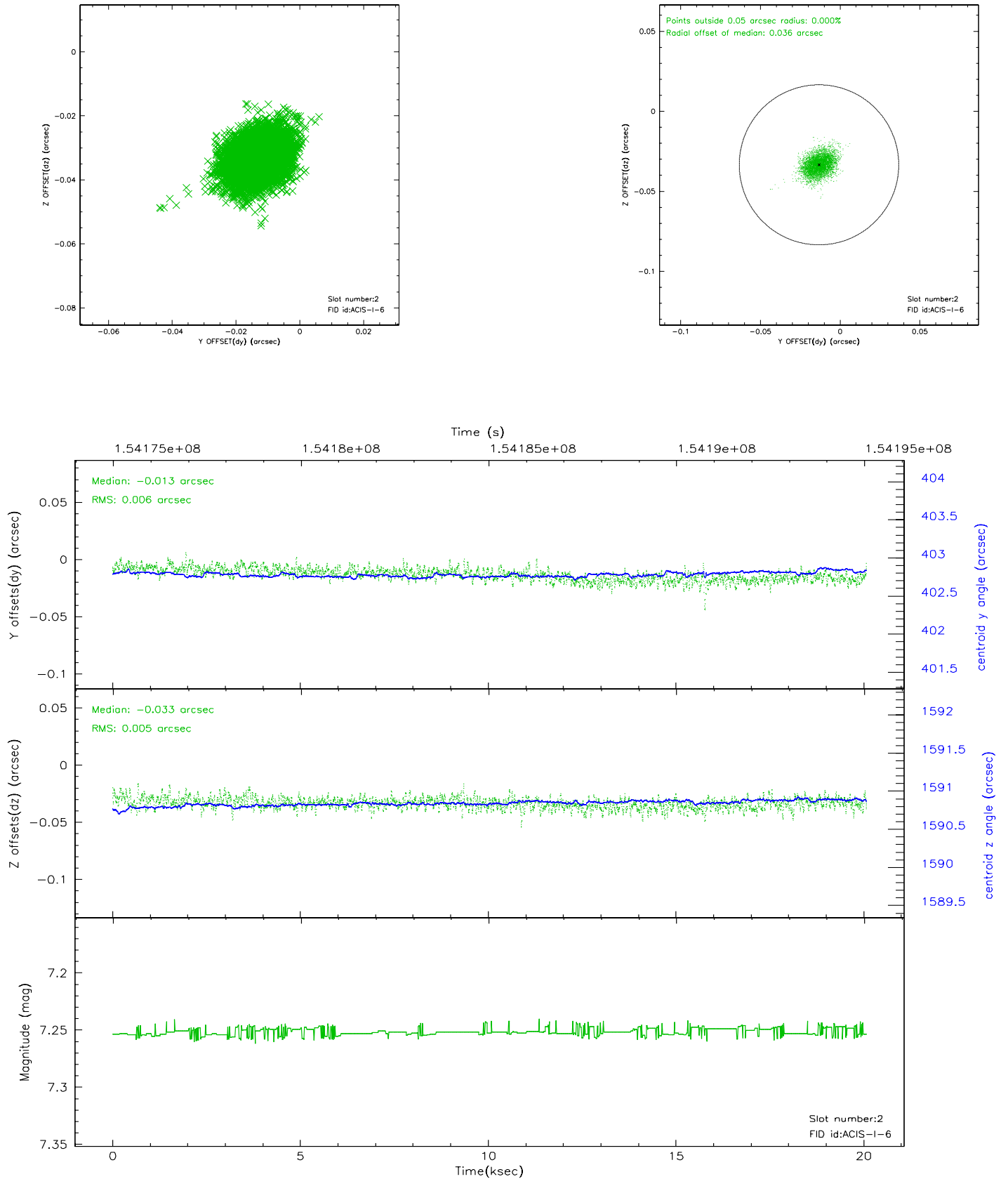
### 2.5.1 Slot 0



## 2.5.2 Slot 1

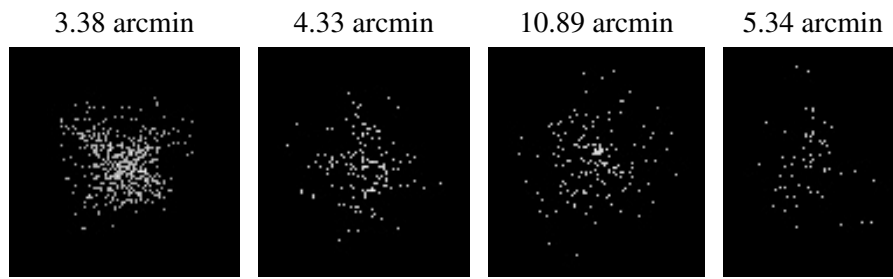


### 2.5.3 Slot 2





### 3 Point Sources



## A Summary

### A.1 Status

V&V Scientist	Beth Sundheim
V&V Date (YYYY-MM-DD)	2006.10.10
V&V Edition	1
V&V Disposition and Status	OK
V&V Charge Time	19.644

### A.2 Comments